



HAL
open science

How healthy is a food product? Neural bases of the use of nutritional information

Marie Prevost, Pascal Hot, Laurent Muller, Bernard Ruffieux, Paolo Crosetto, Emilie Cousin, Cédric Pichat, Monica Baciú

► To cite this version:

Marie Prevost, Pascal Hot, Laurent Muller, Bernard Ruffieux, Paolo Crosetto, et al.. How healthy is a food product? Neural bases of the use of nutritional information. Symposium on Biology of Decision-Making - SBDM 2015, May 2015, Paris, France. 2015. hal-02794162

HAL Id: hal-02794162

<https://hal.inrae.fr/hal-02794162v1>

Submitted on 5 Jun 2020

HAL is a multi-disciplinary open access archive for the deposit and dissemination of scientific research documents, whether they are published or not. The documents may come from teaching and research institutions in France or abroad, or from public or private research centers.

L'archive ouverte pluridisciplinaire **HAL**, est destinée au dépôt et à la diffusion de documents scientifiques de niveau recherche, publiés ou non, émanant des établissements d'enseignement et de recherche français ou étrangers, des laboratoires publics ou privés.

Prevost M,^{a,b} Hot P,^a Muller L,^b Ruffieux B,^b Crosetto P,^b Cousin E,^a Pichat C,^a Baciú M^a

^aLaboratory of Psychology and NeuroCognition – ^bGrenoble Applied Economy Laboratory

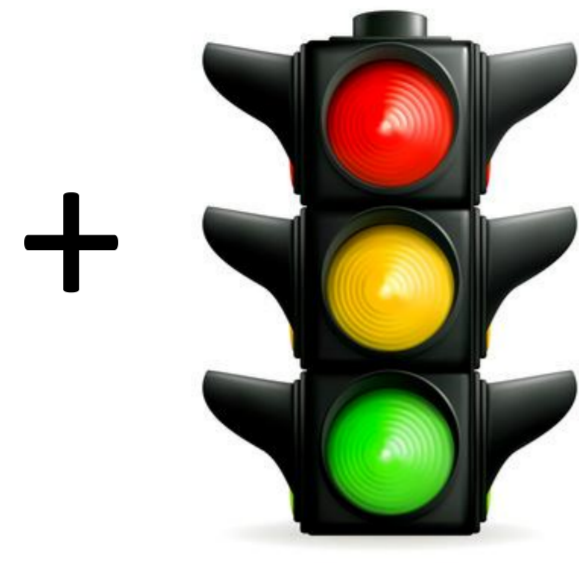
marie.prevost@grenoble.inra.fr

INTRODUCTION

One way to improve food choice is to label food efficiently so that we understand quickly and clearly how good or bad a product is for our health. A traffic light (TL) system has been recently adopted in some countries to indicate the range of nutrients through colors, which is thought to be easier to process and to understand than numerical values, as used with the Guideline Daily Amount (GDA) system.^{1,2}

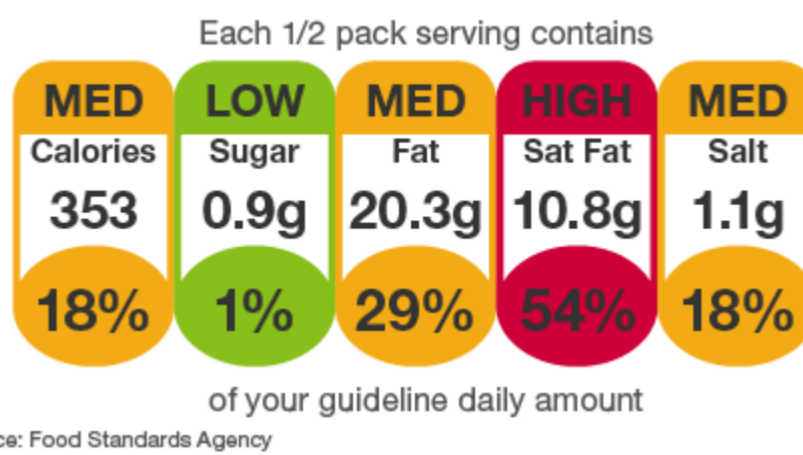


Analytic
Effortful



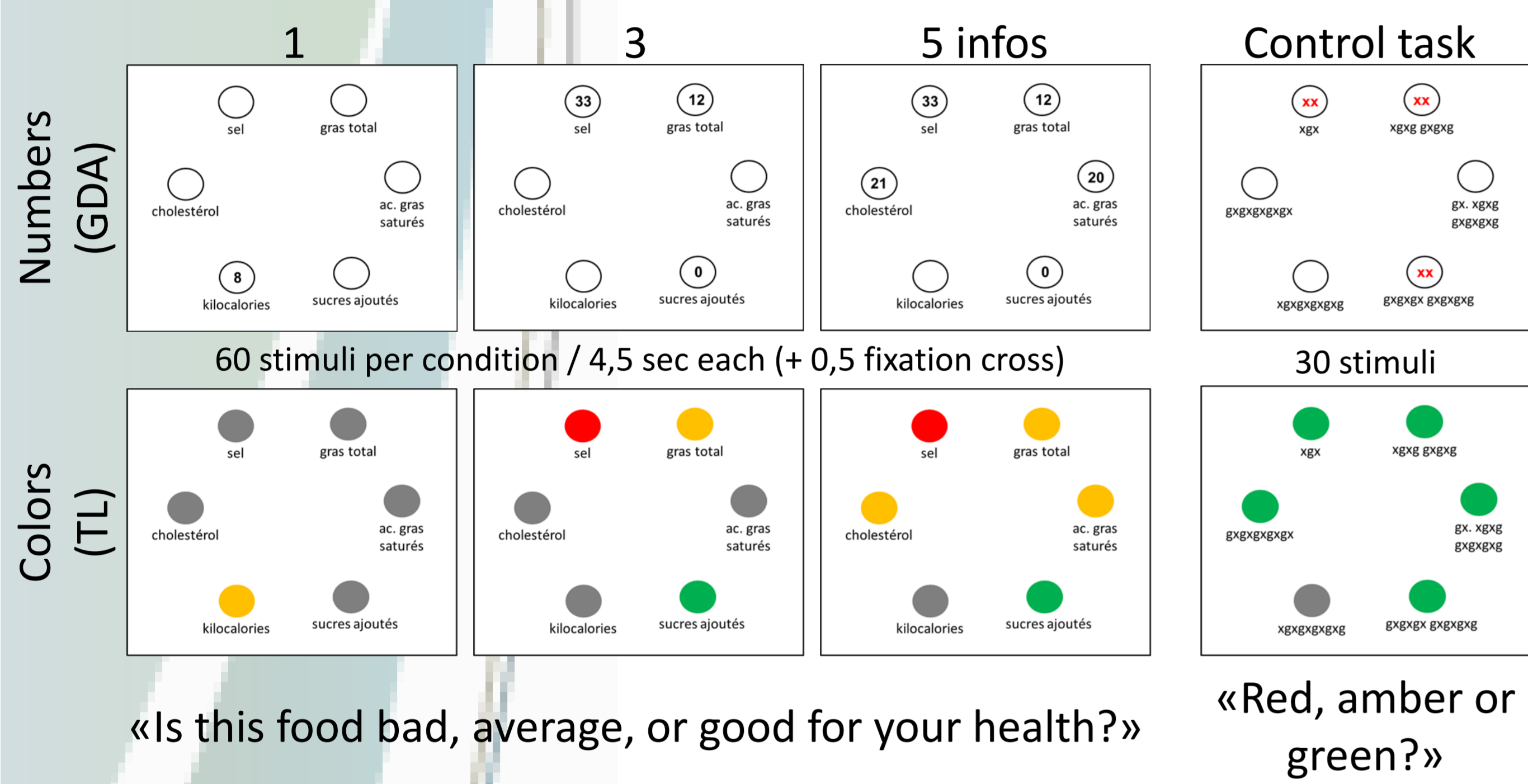
Intuitive
Automatic

=

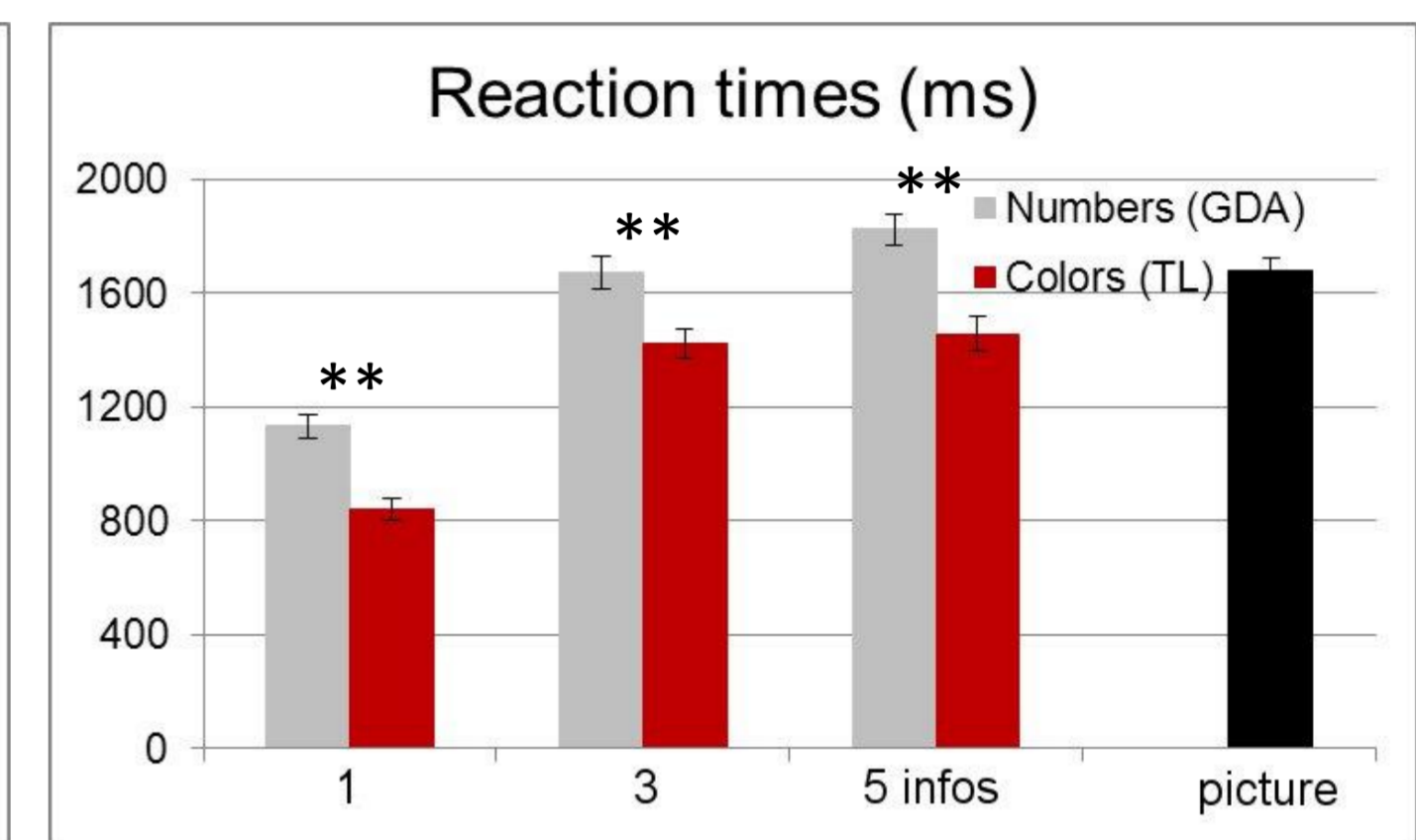
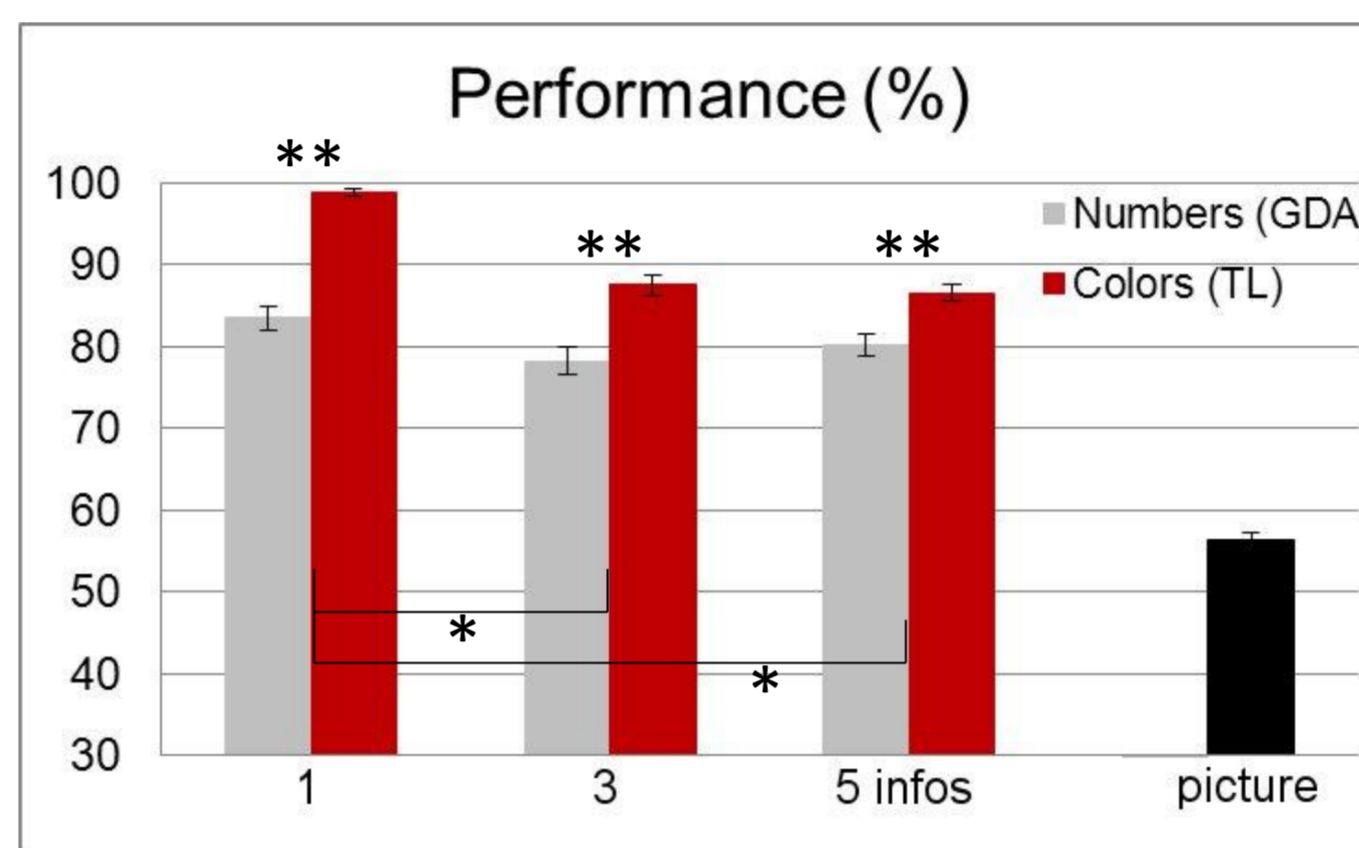


However, little is known about the cognitive processes behind the evaluation of food product from nutritional information, and their neural correlates. This experiment tested the hypothesis that TL (colors) recruit more emotional brain region than GDA (numbers).

METHODS and RESULTS

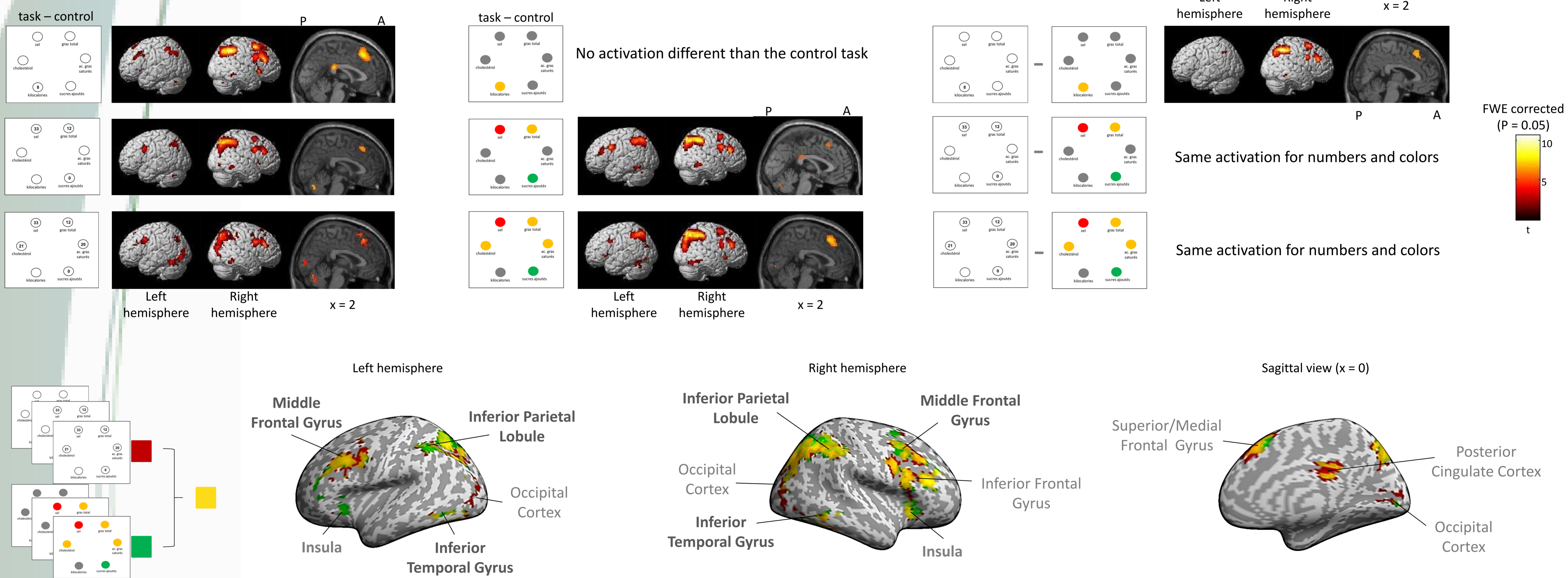


Behavioural analyses: Repeated measures ANOVA with labels (numbers vs colors) and complexity (1, 3 or 5 pieces of information) as within subject factors. Posthoc were run using paired t-test.



N = 48 (26 female)
Age = 26,7 (+/- 4,9)
BMI = 22,9 (+/- 3,6)
** p < 0.001
* p < 0.05

IRM 3T Phillips TR = 2,5s; TE = 30ms; voxel = 3x3x3; 44 slices; FOV = 240, 240, 132; Acquisition matrix = 80 x 79; **Imaging analyses** using SPM12



DISCUSSION

Replicating our previous study, people were better and faster when evaluating food from chromatic (TL-like) compared to numerical (GDA-like) nutritional labels, and from a single piece of information compared to 3 or more. Contrary to our hypotheses, both chromatic and numerical information activated a cerebral network underlying number processing³ (inferior parietal lobule, middle frontal gyrus, occipito-temporal ventral cortex), suggesting that TL was as effortful to process as GDA when there was more than one piece of information, and required similar arithmetic approaches. Activation of the right inferior frontal gyrus confirmed the cognitive effort involved,⁴ whereas activation of the insula confirmed that participants kept in mind the nutritional dimension of the task.⁵ In conclusion, TL might not be easier to process than GDA unless there is only one piece of information.

REFERENCES

1. Aschemann-Witzel J, Grunert KG, van Trijp HC, Bialkova S, Raats MM, Hodgkins C, Wasowicz-Kirylo G, Koenigstorfer J. (2013). **Effects of nutrition label format and product assortment on the healthfulness of food choice.** *Appetite*, 71:63-74.
2. Borgmeier I, Westenhoefer J. (2009). **Impact of different food label formats on healthiness evaluation and food choice of consumers: a randomized-controlled study.** *BMC Public Health*, 9:184
3. Dehaene, S. (2010). **La Bosse des maths: Quinze ans après.** Odile Jacob
4. Aron AR, Robbins TW, Poldrack RA. (2014). **Inhibition and the right inferior frontal cortex: one decade on.** *Trends in cognitive sciences*, 18(4), 177-185.
5. Frank S, Kullmann S, Veit R. (2013). **Food related processes in the insular cortex.** *Frontiers in human neuroscience*, 7.