



HAL
open science

Foresight study on Guadeloupean Agriculture

Carla Barlagne, Jean-Louis Diman, M.-B. Galan, Claude Hoton, Olivier Mora,
T. Noglotte, Harry Ozier-Lafontaine, A. Vinglassalon

► **To cite this version:**

Carla Barlagne, Jean-Louis Diman, M.-B. Galan, Claude Hoton, Olivier Mora, et al.. Foresight study on Guadeloupean Agriculture. 51. Annual meeting of the Caribbean Food Crops Society (CFCS), Jul 2015, Paramaribo, Suriname. 2015. hal-02795347

HAL Id: hal-02795347

<https://hal.inrae.fr/hal-02795347>

Submitted on 5 Jun 2020

HAL is a multi-disciplinary open access archive for the deposit and dissemination of scientific research documents, whether they are published or not. The documents may come from teaching and research institutions in France or abroad, or from public or private research centers.

L'archive ouverte pluridisciplinaire **HAL**, est destinée au dépôt et à la diffusion de documents scientifiques de niveau recherche, publiés ou non, émanant des établissements d'enseignement et de recherche français ou étrangers, des laboratoires publics ou privés.

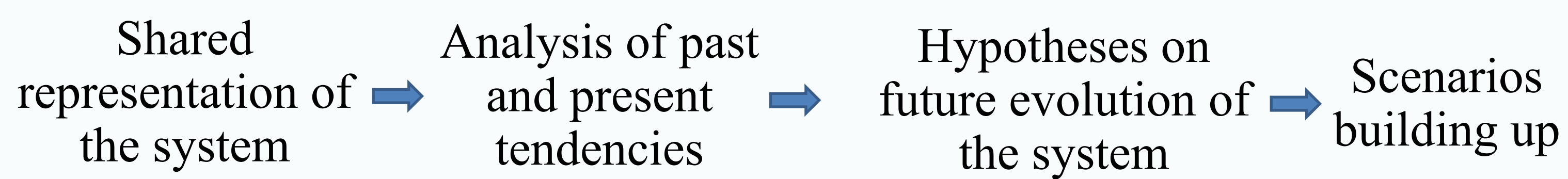
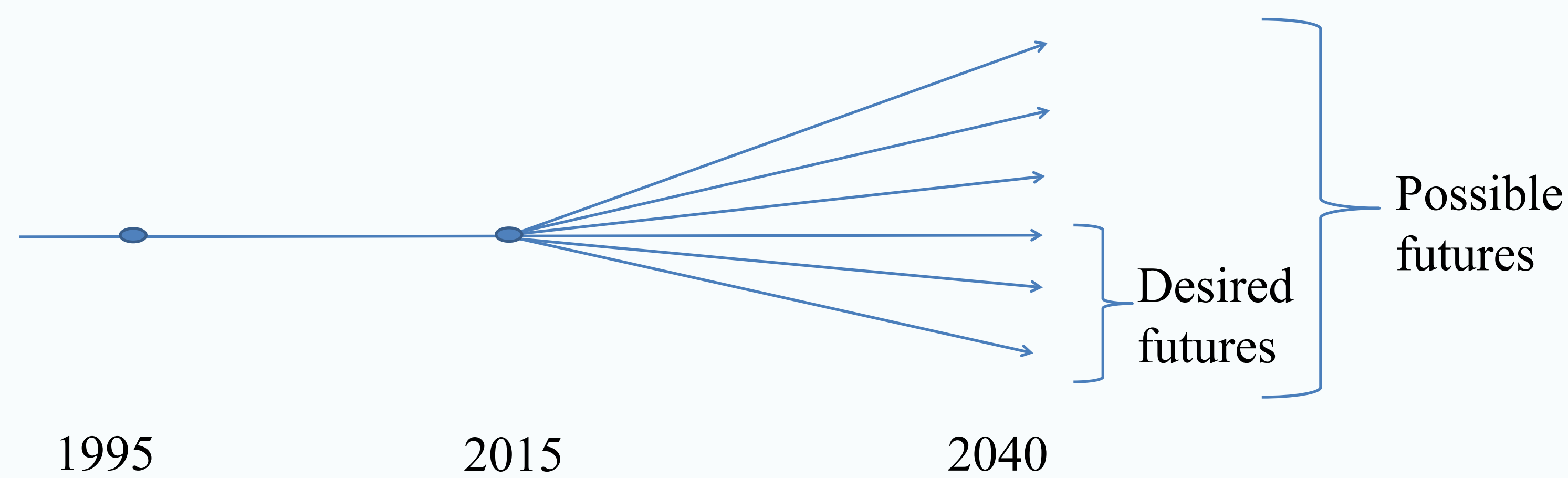
INTRODUCTION

- ✓ Green agriculture → definition of **new models** of agricultural development (UNEP, 2011)
- ✓ Foresight studies → **vision** of the possible **futures** + **planification** of required **transitions** (Godet and Durance, 2011)
- ✓ Guadeloupe(FWI) → **co-construction** of an **agricultural project** is a priority
- ✓ Institution and program: Steering Committee for Research, Training and Development (COREDEF) of the Chamber of Agriculture and Regional Program for Agricultural Development



METHODS

Trajectories of the prospective system



Steps of the method

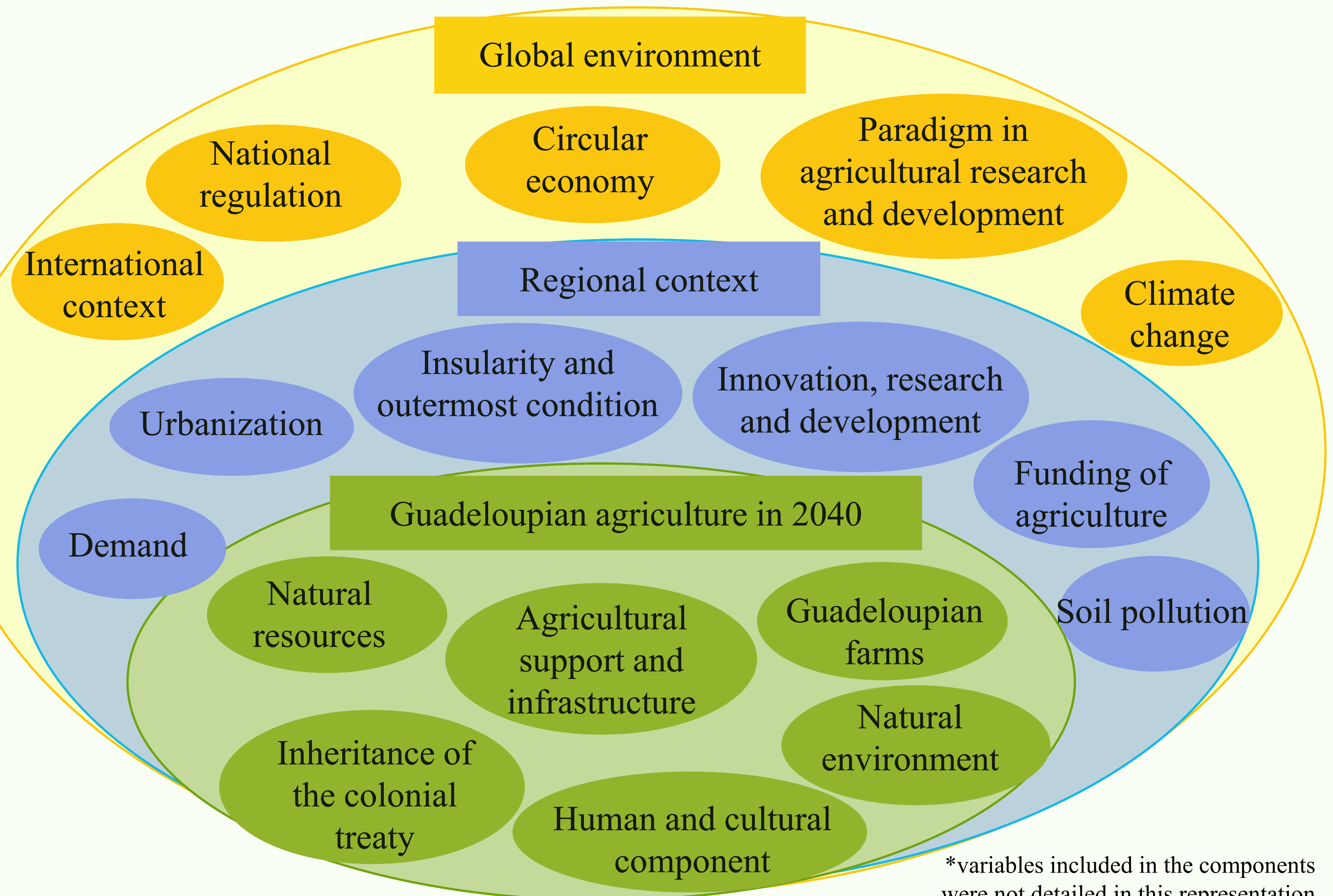
Adapted from De Jouvenel, 2004

FIRST RESULTS

What is at stake for Guadeloupian agriculture?

- Integrating conventional mainstream agriculture and the largely informal small scale agriculture in agricultural policies and development
- Anticipating the demand to better take into account future changes
- Ensuring the sustainability of Guadeloupian agriculture

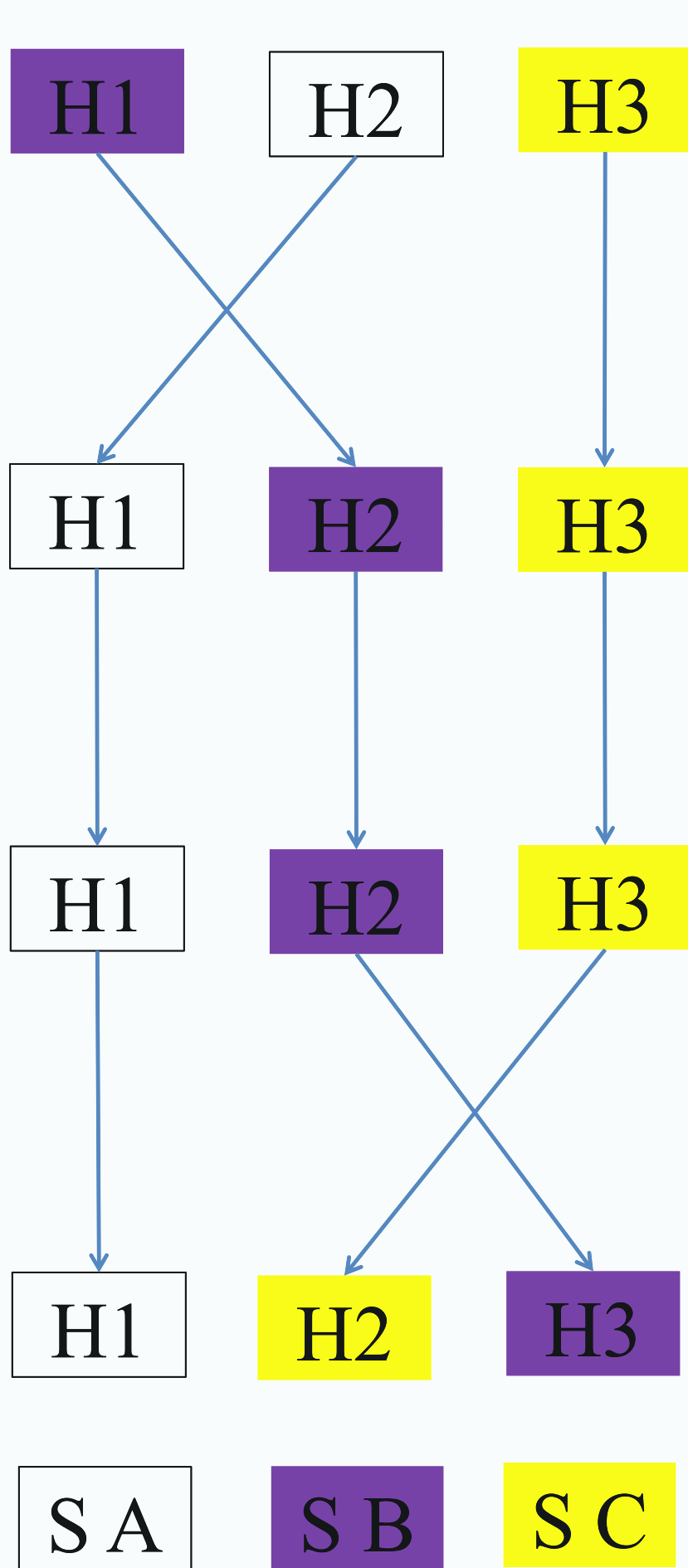
Representation of the prospective system: time scale, boundaries and components*



Essential variables

- Environmental and sanitary regulations
- Human consumption
- Types of farms
- Agricultural demography

Hypotheses of evolution



Quality criteria for scenario construction

- Relevance
- Coherence
- Importance
- Likelihood
- Transparency

Scenarios → SA SB SC

Key to diagram: scenario B (SB) is the result of the combination of hypotheses H1 for the variable 'Environmental and sanitary regulations', H2 for the variables 'Human consumption' and 'Types of farms' and H3 for the variable 'Agricultural demography'

Adapted from Godet and Durance, 2011

DISCUSSION

- Shared vision of the system : basis to analyze past tendencies + future evolution
- Urgent to define sustainable agricultural systems that answer global challenges
- Transitions needed to alternative models of agricultural development that better reflect the reality of agriculture in Guadeloupe
- Identification of levers of change for the transformation of the system's dynamics

CONCLUSION

- Progress of the work + intermediate scenarios will be submitted to the ad-hoc committee for validation
- Greater appropriation of the foresight study by the rural actors
- Shared goals and co-construction of desired futures for the definition of an agricultural project for Guadeloupe

REFERENCES:

- UNEP, 2011. *The transition to a Green Economy: Benefits, challenges and Risks from a Sustainable Development Perspective*. Report by a Panel of Experts to Second Preparatory Committee Meeting for United Nations Conference on Sustainable Development. UN-DESA, UNEP, UNCTAD. 97 p.
- Godet, M. and Durance, P., 2011. *Strategic Foresight for Corporate and Regional Development*. DUNOD – UNESCO. 201p.
- De Jouvenel Huguès, 2004. *An Invitation to Foresight*. (translation from French by Helen Fish). Futuribles, Paris. 87p.

ACKNOWLEDGMENTS: The authors wish to thank the experts who are taking part in this study.

