



**HAL**  
open science

## Transcriptome and ecophysiological data of *Populus nigra* genotypes during drought stress

Marie Garavillon-Tournayre, Boris B. Fumanal, Aurelie A. Gousset,  
Jean-Stéphane J.-S. Venisse, Romain de Oliveira, Pierrick Benoit, Benjamin  
Alary, Philippe Label

### ► To cite this version:

Marie Garavillon-Tournayre, Boris B. Fumanal, Aurelie A. Gousset, Jean-Stéphane J.-S. Venisse, Romain de Oliveira, et al.. Transcriptome and ecophysiological data of *Populus nigra* genotypes during drought stress. JOBIM 2015, Jul 2015, Clermont-Ferrand, France. , pp.1, 2015. hal-02800816

**HAL Id: hal-02800816**

**<https://hal.inrae.fr/hal-02800816>**

Submitted on 5 Jun 2020

**HAL** is a multi-disciplinary open access archive for the deposit and dissemination of scientific research documents, whether they are published or not. The documents may come from teaching and research institutions in France or abroad, or from public or private research centers.

L'archive ouverte pluridisciplinaire **HAL**, est destinée au dépôt et à la diffusion de documents scientifiques de niveau recherche, publiés ou non, émanant des établissements d'enseignement et de recherche français ou étrangers, des laboratoires publics ou privés.



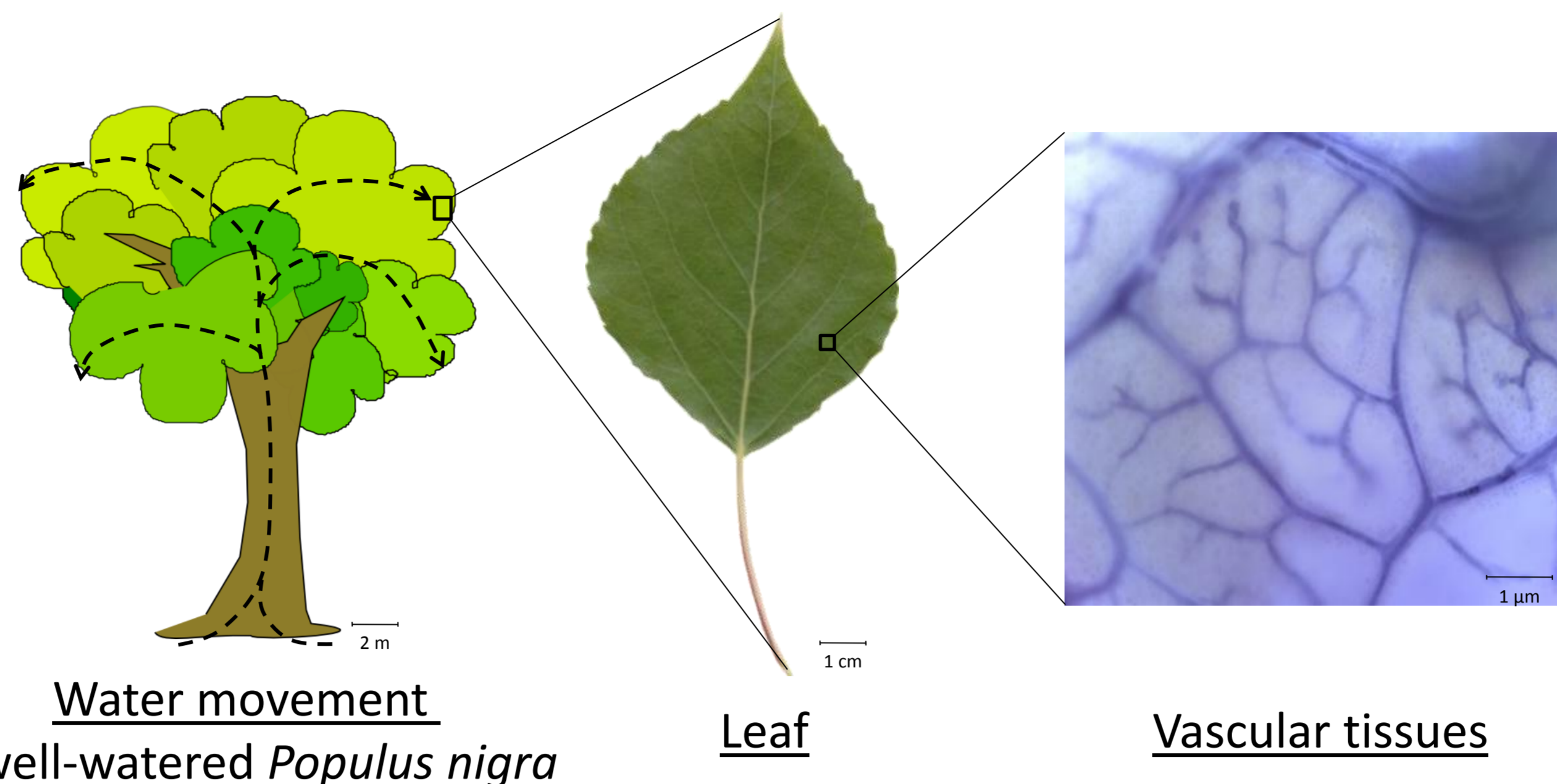
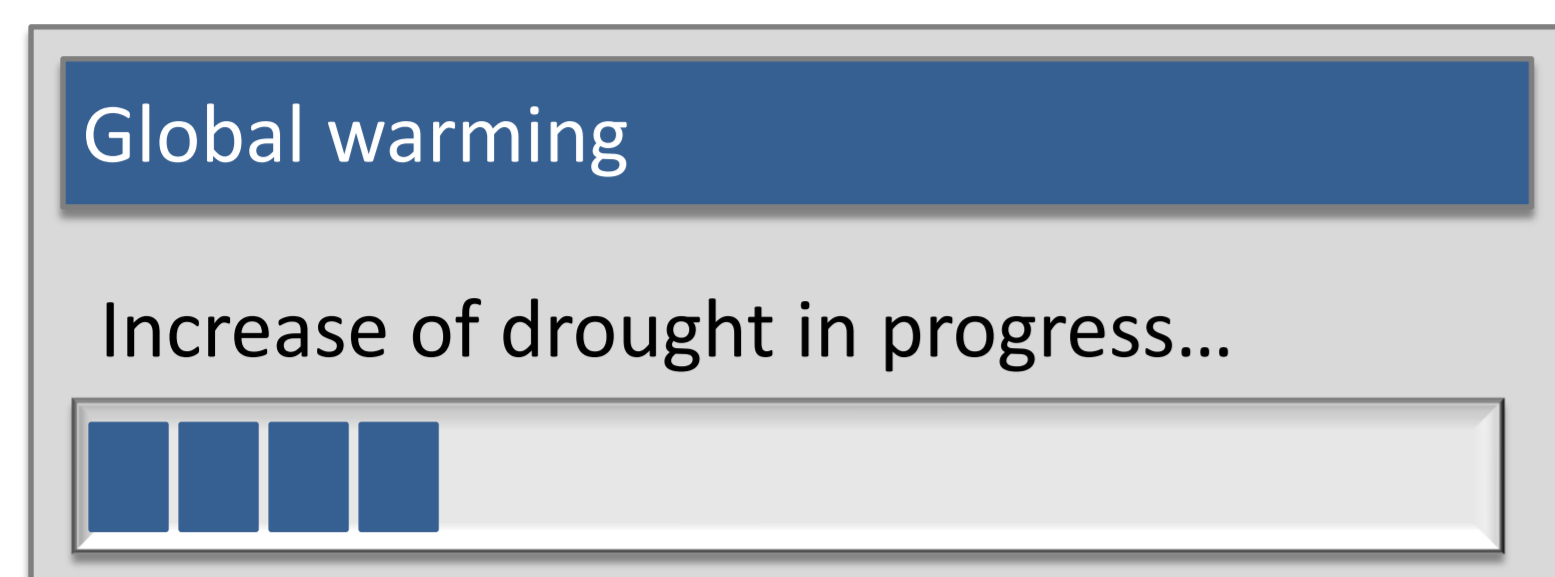
# Transcriptome and ecophysiological data of *Populus nigra* genotypes during drought stress

Garavillon-Tournayre M., Fumanal B., Gousset-Dupont A., Venisse J. S., De Oliveira R., Benoit P., Alary B. and Label P.

Marie.GARAVILLON@univ-bpclermont.fr



## Issue



## Questions

Do poplars responses to drought stress depend on plasticity?

Is the leaf transcriptome modified by drought treatment?

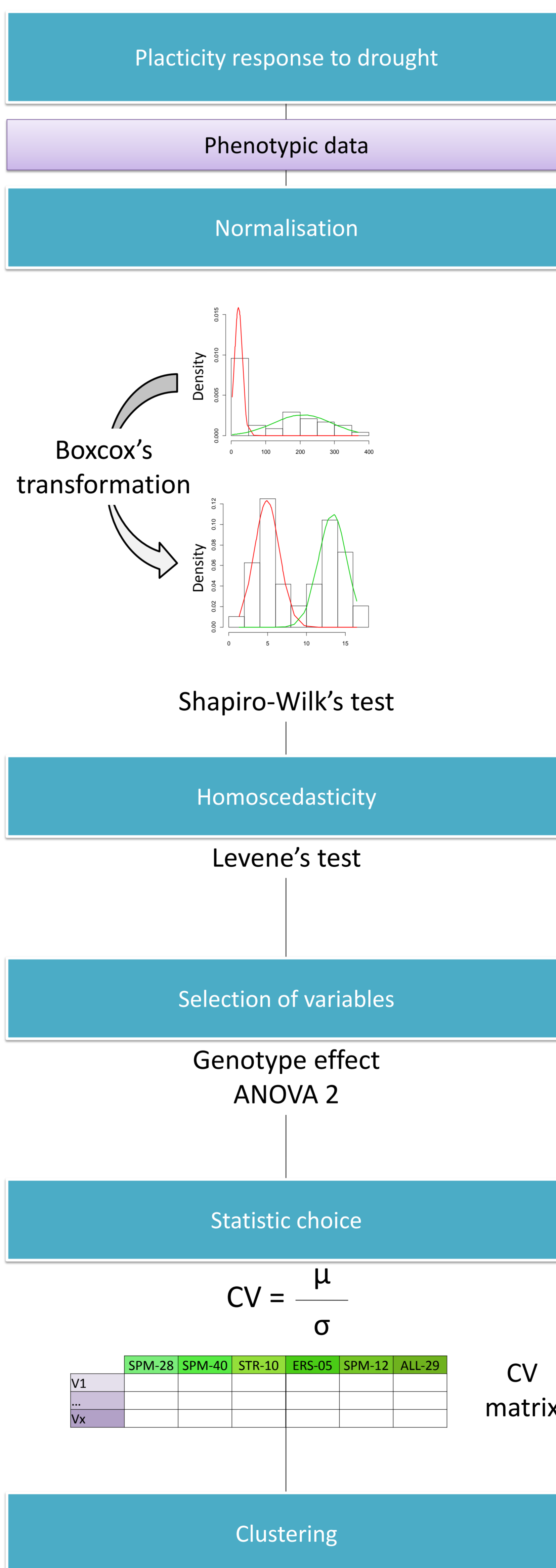
## Experimental design

## Statistical analysis

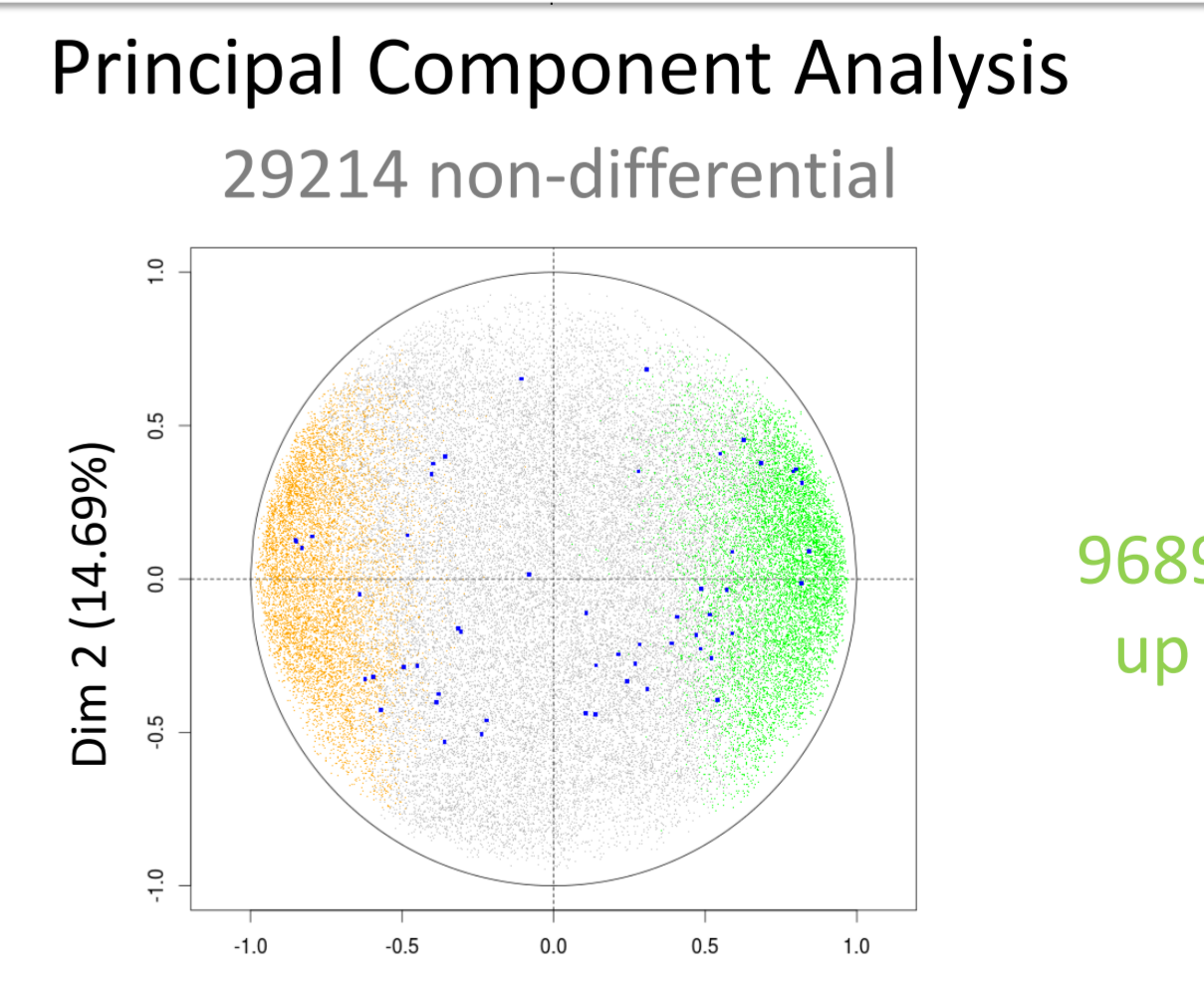
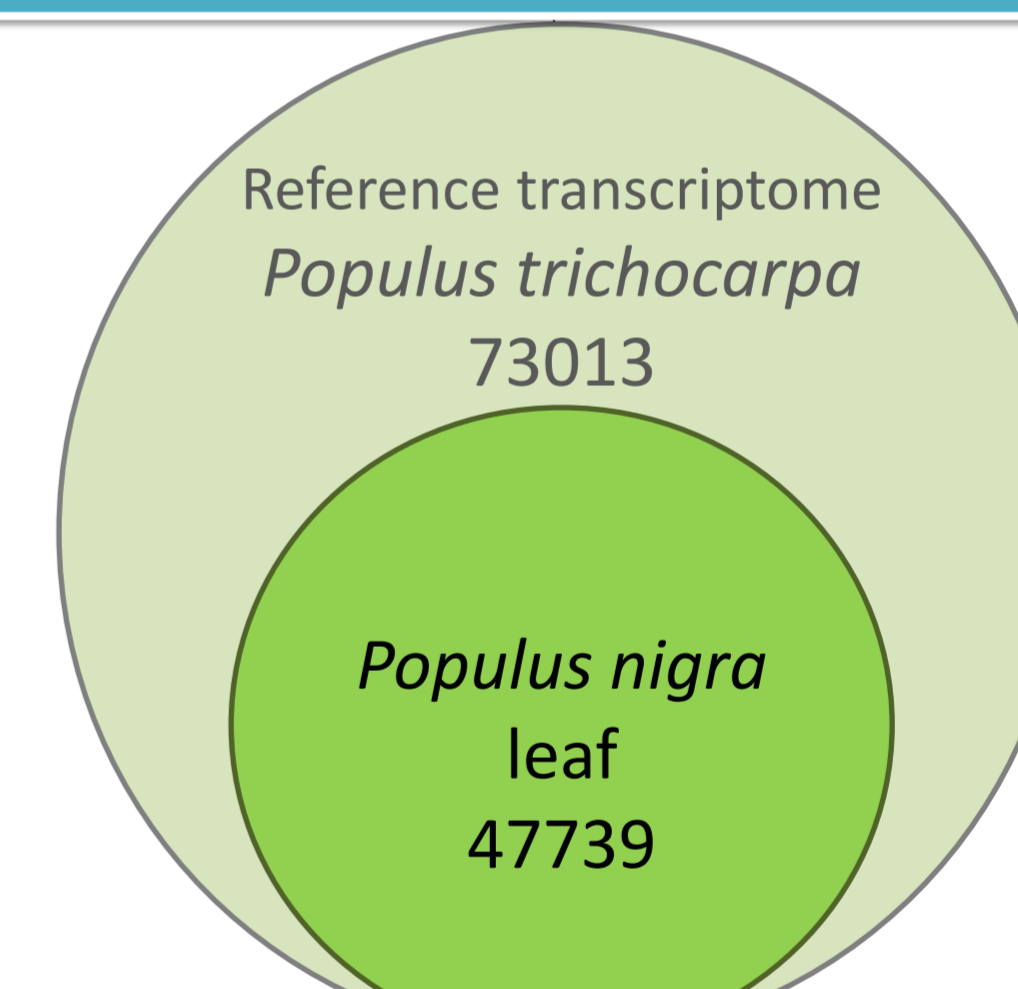
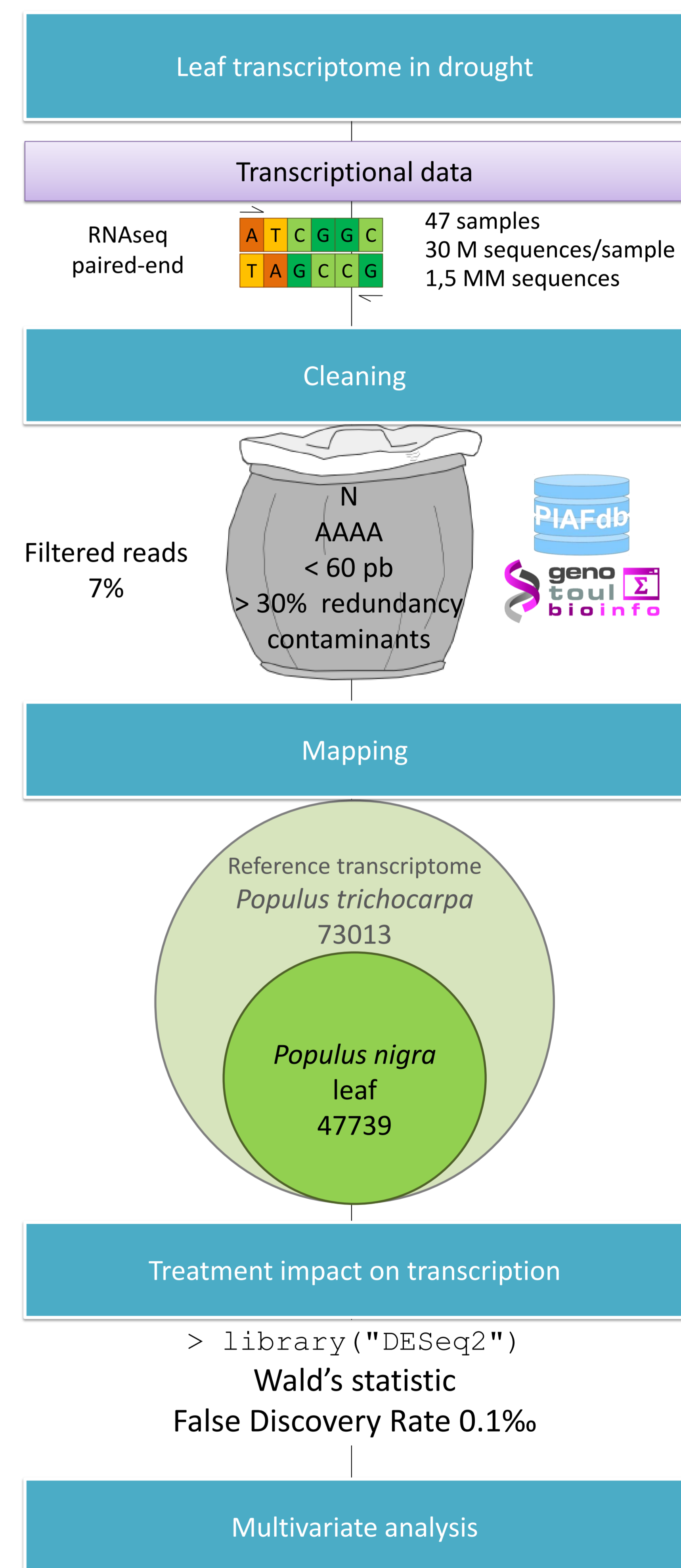
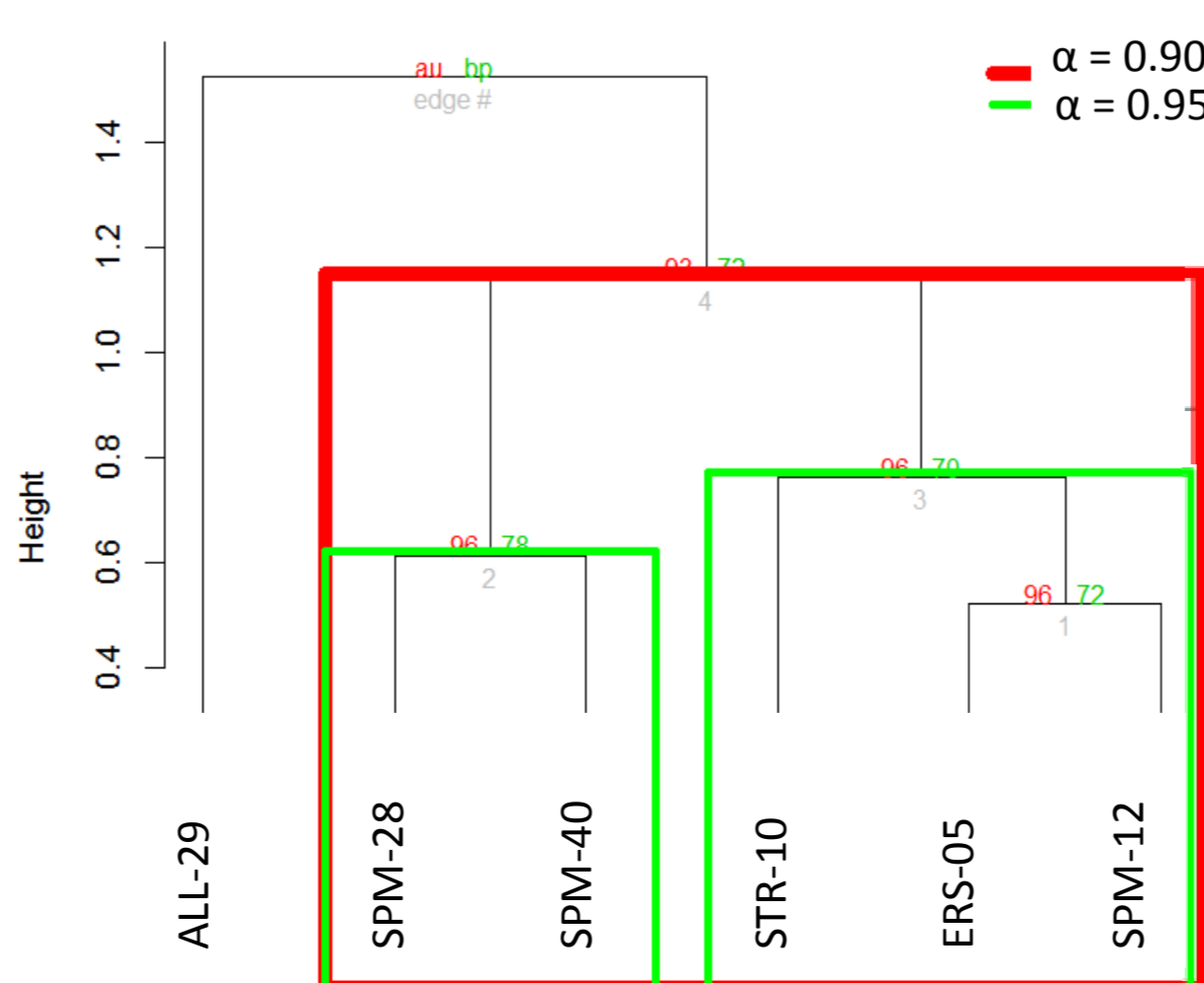
Explained variables					
Phenotypes			Transcriptome		
V1	...	V133	V1	...	V73013

Explanatory variables		
2 levels	6 levels	4 levels
Treatment	Genotype	Biological repetition
WD	SPM-28	R1
WD	SPM-28	R2
WD	SPM-28	R3
WD	SPM-28	R4
WD	SPM-40	R1
WD	SPM-40	R2
WD	SPM-40	R3
WD	SPM-40	R4
WD	STR-10	R1
WD	STR-10	R2
WD	STR-10	R3
WD	STR-10	R4
WD	ERS-05	R1
WD	ERS-05	R2
WD	ERS-05	R3
WD	ERS-05	R4
WD	SPM-12	R1
WD	SPM-12	R2
WD	SPM-12	R3
WD	SPM-12	R4
WD	ALL-29	R1
WD	ALL-29	R2
WD	ALL-29	R3
WD	ALL-29	R4
WW	SPM-28	R1
WW	SPM-28	R2
WW	SPM-28	R3
WW	SPM-28	R4
WW	SPM-40	R1
WW	SPM-40	R2
WW	SPM-40	R3
WW	SPM-40	R4
WW	STR-10	R1
WW	STR-10	R2
WW	STR-10	R3
WW	STR-10	R4
WW	ERS-05	R1
WW	ERS-05	R2
WW	ERS-05	R3
WW	ERS-05	R4
WW	SPM-12	R1
WW	SPM-12	R2
WW	SPM-12	R3
WW	SPM-12	R4
WW	ALL-29	R1
WW	ALL-29	R2
WW	ALL-29	R3
WW	ALL-29	R4

WD Water Deficit  
WW Well-Watered



	SPM-28	SPM-40	STR-10	ERS-05	SPM-12	ALL-29
V1						
...						
Vx						



Target transcripts = aquaporins

