



HAL
open science

TopoIBase: a comprehensive database dedicated to type IA DNA-topoisomerases

Nicolas Daccord, Eduardo Corel, Damien Correia, Anaïs Louis, Hélène Débat, Vladimir Daric, Marc Nadal, Claudine Devauchelle, Franck F. Samson

► **To cite this version:**

Nicolas Daccord, Eduardo Corel, Damien Correia, Anaïs Louis, Hélène Débat, et al.. TopoIBase: a comprehensive database dedicated to type IA DNA-topoisomerases. JOBIM 2015 - Journées Ouvertes Biologie Informatique Mathématiques, Jul 2015, clermont-ferrand, France. , 2015. hal-02801275

HAL Id: hal-02801275

<https://hal.inrae.fr/hal-02801275v1>

Submitted on 5 Jun 2020

HAL is a multi-disciplinary open access archive for the deposit and dissemination of scientific research documents, whether they are published or not. The documents may come from teaching and research institutions in France or abroad, or from public or private research centers.

L'archive ouverte pluridisciplinaire **HAL**, est destinée au dépôt et à la diffusion de documents scientifiques de niveau recherche, publiés ou non, émanant des établissements d'enseignement et de recherche français ou étrangers, des laboratoires publics ou privés.

TopolBase : a comprehensive database dedicated to type IA DNA-topoisomerases.

Nicolas DACCORD¹, Eduardo COREL^{1,2}, Damien CORREIA^{1,4}, Anais LOUIS¹, H el ene DEBAT^{3,4,5}, Vladimir DARIC⁴, Marc NADAL^{4,5}, Claudine DEVAUCHELLE¹ and Franck SAMSON¹

¹LaMME, UMR8071 CNRS, 23 bvd de France, Universit e d'Evry-Val d'Essonne |BGBI, 91037 Evry

²IBPS, UMR 7138, Universit e Pierre et Marie Curie, 7 quai Saint-Bernard, 75252 Paris

³Universit e Versailles St-Quentin, 45 avenue des Etats-Unis, 78035 Versailles

⁴IGM, UMR 8621 CNRS, Universit e Paris-Sud, B at. 409, 91405 Orsay Cedex

⁵Institut Jacques Monod, UMR 7592 CNRS, Universit e Paris Diderot



Topoisomerases

- Proteins discovered in 1971 (Wang et al., 1971)
- Function : stabilization of the DNA topology

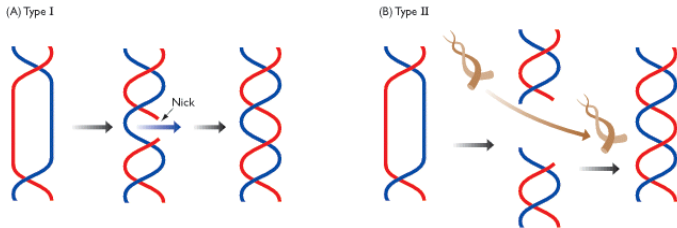


Figure: Mechanisms of action of type I et II topoisomerases.

Diversity

- Many types et sub-types of differents origins
- Different activities and dependancies
- Topoisomerases IA.

Topoisomerases			Characteristics			Activities			
Types	Sub-types	Name	Mg2+	ATP	Cut	Releases negative supercoiling	Releases positive supercoiling	Insets negative supercoiling	Insets positive supercoiling
I	IA	I	+	-	Simple strand	+	-	-	-
		TopoR	+	+	Simple strand	+	-	-	+
	IB	TopoIB	-	-	Simple strand	+	+	-	-
II	IIA (bact.)	Gyrase	+	+	Double strand	-	+	+	-
	IIA (euca.)	Topo2	+	+	Double strand	+	+	-	-
	IIB (arch.)	TopoIV	+	+	Double strand	+	+	-	-

Figure: Types and sub-types of topoisomerases and enzymatic activity variations.

Objectives

- Topoisomerases IA are difficult to study
- Lack of protein database dedicated to topoisomerases
- Objective : develop an expertised database dedicated to topoisomerases
- Expertise : data selection, VLD (Variable Length Decoding : Didier et al., 2012 ¹) classification and annotations

¹Didier, G., Corel, E., Laprevotte, I., Grossmann, A., and Devauchelle, C.

(2012). [Variable length local decoding and alignment free sequence comparison.](#)

Theoretical Computer Science, 462:1–11

Model

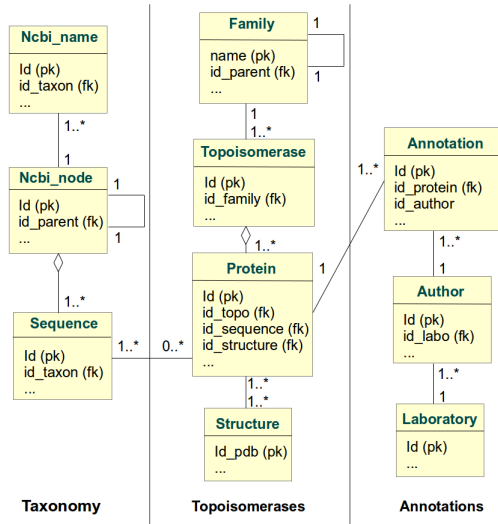


Figure: Simplified UML diagram of the database.

Data selection and expertise

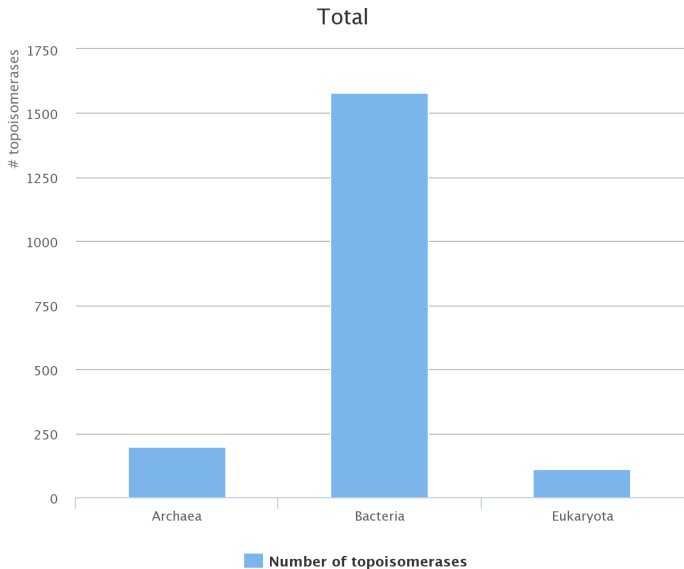
- Topoisomerases : TBLASTN on fully sequenced genomes
- Classification : VLD (Didier et al. 2012 ¹) + hierarchical ascendant clustering
- Annotations by experts

¹Didier, G., Corel, E., Laprevotte, I., Grossmann, A., and Devauchelle, C.

(2012). [Variable length local decoding and alignment free sequence comparison.](#)

Theoretical Computer Science, 462:1–11

Database statistics



Database statistics (2)

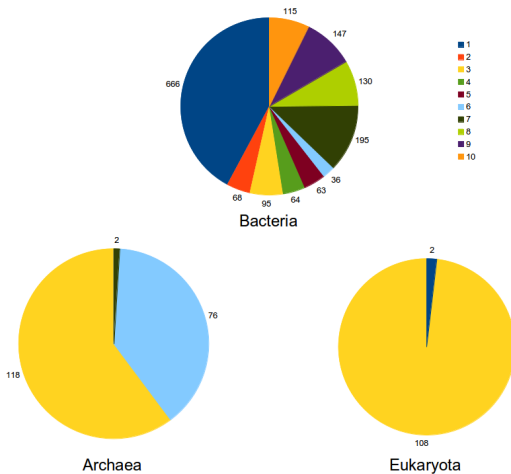


Figure: Topoisomerases distribution in domains.

Graphical interface

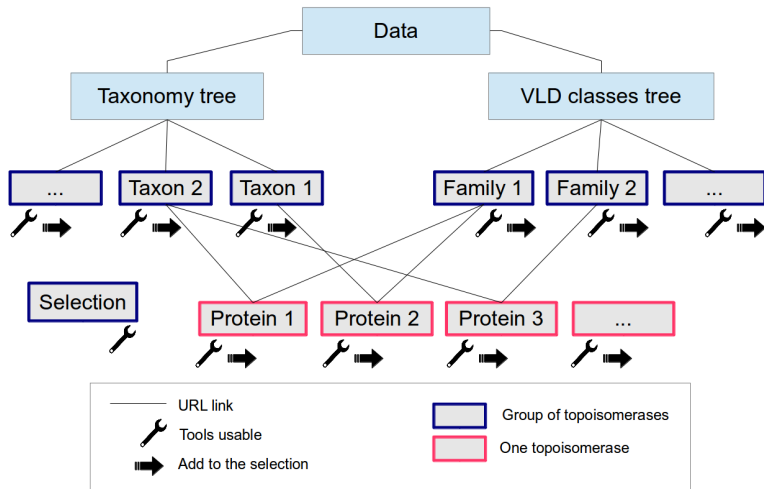


Figure: Data browsing on the interface.

Taxonomy

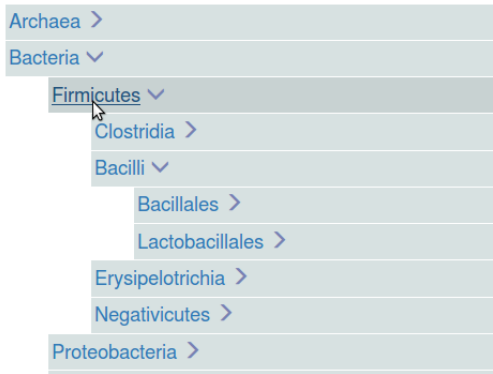


Figure: Part of the taxonomy tree.

Taxonomy

Download
Blast
Muscle
VLD
Add to selection ↗

Taxon : Firmicutes

Select all	Name	Family	Sequence
<input checked="" type="checkbox"/>	(937) Putative DNA topoisomerase [Lactobacillus brevis]	3	MSIVVLTEKSSQIDPYAKALGTPKKKQGSVWHSALL NADVQFVAASGHLFKLDGPEYNDAWRDRSNYEQL PMVPOKFKARIKDARARASFNRRIKOAITAADEVII.ATD
<input checked="" type="checkbox"/>	(809) DNA topoisomerase 1 [Lactobacillus acidophilus NCFM]	1	MPTKAKSKSKTKKRRKILVIVESPAKAKTIEKYLGRNY HVIASKGHIRDLPKSQMGIDFEDNYKPKYISIRGKGD IKELKSEAKKAKEYVLASDPDREGEAIAWHVAHALDL
<input checked="" type="checkbox"/>	(276) Reverse gyrase [Caldicellulosiruptor saccharolyticus DSM 8903]	6	MATGAKYYHSCINC GGINS DTRNQKGLPCEKLPFE NNMNI LESLKEHNSLKDYAYWNFQNEYKEFEKFFV SKVGPMTGYQRLWARRRLLLSKSF LIAPTGLGKTTF

Showing 1 to 10 of 414 entries

Previous 1 2 3 4 5 ... 42 Next

Family distribution

Family ID	Count	Percentage
1	206	50%
7	100	24%
2	68	16%
3	30	7%
6	10	2%
5	1	0%

Taxonomy tree

- Firmicutes ▾
 - Clostridia >
 - Bacilli >
 - Erysipelotrichia >
 - Negativicutes >

Figure: Taxon page.

Selections

[Download](#)
[Blast](#)
[Muscle](#)
[VLD](#)

Selection 1

Selected topoisomerases

Show **10** entries

Select all Name Family Sequence

<input checked="" type="checkbox"/>	(256) DNA topoisomerase 1 [Marinifera piezophila KA3]	1	MPKTAKKIVIVESPAKAKTIEKYLGSSEYKVVASKGHIRD LPQKKFGVDIEKDFEPEFELMPGKEKVVEDLKKIAG KTVYLLAPDMREGEIAIWHLSYLLGLDENEENRIIFS
<input checked="" type="checkbox"/>	(550) Reverse gyrase [Thermotoga sp. EMP]	6	MAVNSKYHHSCINCGLNTDERNERGLPCEVCLPE DSPSDIYRALLERKTLKEYRFYHEFWNEYEDFRSFF KKKFGKDLTGQYQRLWAKRIVQGKSFTMVAPTGVGKT

Showing 1 to 10 of 43 entries

Previous **1** 2 3 4 5 Next

Family distribution

6: 19 (44%) 1: 23 (53%)

Taxa distribution

Aquificae: 20 (47%) Bacteria

Thermotogae: 23 (53%)


Figure: Selection page.


BLASTP


```
>98|DNA topoisomerase 1[1|AAA68949.1|P46799
MSKKVKKYIVVESPAKAKTIKSLGNEYEVFASMGHIIDLPKSKFGVDLEKDFEPEFAVI
KGKEKVVKLDLAKKGELLIASDMREGEAIAWHIARVTNTLGRKNRIVFSEITPRVIR
EAVKNPREIDMKVRAQLARRILDRIVGYSLPVLWRNFKSNLSAGRVQSATLKLVCORE
REILRFVPKKYHRITVNFDDLTAEDVKEKKFFDAETLKEIQSIDELVVEKKVSVKKFA
PPEPFKSTLQQEAYSKLGFSVSKTMMIAQQLYEGVETKDGHIAFITYMRTDSTRVSDYA
KEEARNLITEVFGEEYVGSKRERRKSNAKIQDAHEAIRPTNVMFHTPEEAGYLNSDQKKL
YELIWKRFASQMKPSQYEETRFVLRKDGKGRFGTVLKKIFDGEKVMKTERNTGEFP
FEEGESVKKPVVVKIEEQETKPKPRYTEGSLVKEMERLIGRPSYASTIKLLNRGYIKK
IRGYLYPTIVGSMVDLYLEKKYSDVSVSFTAEMEKDLDEVEQKKTKDKIVLREFYESFS
SVFDRNDRIVVDFPTNQKCSGKEMRLSFGKYGYLKCCEGKTRSVKNDIEAVIDDGKIF
LGRKDSSESGSDGRSVEGGNLSKRRKGGKGS
>91|DNA topoisomerase 1[1|AAD35346.1|P46799
MSKKVKKYIVVESPAKAKTIKSLGNEYEVFASMGHIIDLPKSKFGVDLEKDFEPEFAVI
KGKEKVVKLDLAKKGELLIASDMREGEAIAWHIARVTNTLGRKNRIVFSEITPRVIR
EAVKNPREIDMKVRAQLARRILDRIVGYSLPVLWRNFKSNLSAGRVQSATLKLVCORE
REILRFVPKKYHRITVNFDDLTAEDVKEKKFFDAETLKEIQSIDELVVEKKVSVKKFA
PPEPFKSTLQQEAYSKLGFSVSKTMMIAQQLYEGVETKDGHIAFITYMRTDSTRVSDYA
KEEARNLITEVFGEEYVGSKRERRKSNAKIQDAHEAIRPTNVMFHTPEEAGYLNSDQKKL
YELIWKRFASQMKPSQYEETRFVLRKDGKGRFGTVLKKIFDGEKVMKTERNTGEFP
FEEGESVKKPVVVKIEEQETKPKPRYTEGSLVKEMERLIGRPSYASTIKLLNRGYIKK
```

[Load sample data](#)

Parameters

Blast program 

E-value 

Bank 

No files selected.

Figure: BLASTP interface.

Other use-cases

- Taxa and VLD distribution of topoisomerases containing a specific amino acid sequence
- Analysis of a list of uniprot IDs of topoisomerases
- Classification of a new protein compared to stored topoisomerases

Perspectives

- Extension of the database to type IB and II topoisomerases
- Visualization of neighbors genomic elements
- Binding to other databases

Thank you for your attention
`stat.genopole.cnrs.fr/topodb`

Acknowledgements

Claudine Devauchelle and Franck Samson
Marc Nadal, Hélène Debat, Eduardo Corel, Damien Correia,
Vladimir Daric, Anaïs Louis and Florence Vogliolo