



Quality of meat from entire, castrated or immunocastrated male pigs as affected by pre-slaughter handling

Bénédicte Lebret, Cristina Delgado Andrade, Stéphanie Claude, Armelle Prunier

► To cite this version:

Bénédicte Lebret, Cristina Delgado Andrade, Stéphanie Claude, Armelle Prunier. Quality of meat from entire, castrated or immunocastrated male pigs as affected by pre-slaughter handling. Scientific Satellite Boars heading for 2018, Dec 2011, Amsterdam, Netherlands. , 2011. hal-02804136

HAL Id: hal-02804136

<https://hal.inrae.fr/hal-02804136>

Submitted on 5 Jun 2020

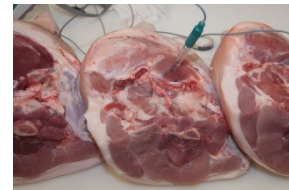
HAL is a multi-disciplinary open access archive for the deposit and dissemination of scientific research documents, whether they are published or not. The documents may come from teaching and research institutions in France or abroad, or from public or private research centers.

L'archive ouverte pluridisciplinaire **HAL**, est destinée au dépôt et à la diffusion de documents scientifiques de niveau recherche, publiés ou non, émanant des établissements d'enseignement et de recherche français ou étrangers, des laboratoires publics ou privés.

Quality of meat from entire, castrated or immunocastrated male pigs as affected by pre-slaughter handling

B. Lebret, C. Delgado-Andrade,
S. Claude & A. Prunier

Livestock Production Systems,
Animal and Human Nutrition - Rennes



Background

- 2018 : ban of surgical castration
- Entire males ☺ animal welfare, production costs
☹ aggressive behaviour → meat quality, boar taint
- Immunocastration aggressive behaviour & boar taint

Objectives

- Carcass and meat quality (MQ) traits
Pietrain X LW X Ld, n=60

{
entire (EN)
immunocastrated (IC)
surgically castrated (SC)

- Social stress, preslaughter period
 - without mixing
 - mixing with unfamiliar pigs

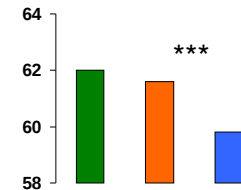
➤ Response of pigs to social stress according to sexual type?

Results

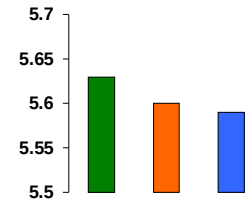
• Sexual type

- EN and IC were leaner than SC
- Similar reactivity at slaughter and MQ traits of loin and ham

Lean meat content

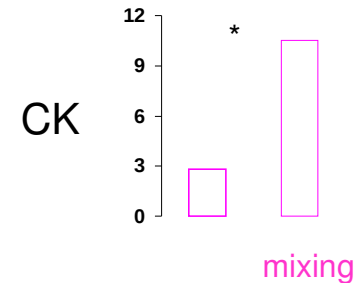


pH 24h LL



• Social stress

- Increased skin lesions and blood creatine kinase: agonistic behaviour
- Limited impact on meat quality



• Social stress according to sexual type

- No interaction between social stress and sexual type

Conclusions

- EN & IC pigs exhibited satisfying meat quality and were not more sensitive to preslaughter handling than SC pigs