



**HAL**  
open science

## Towards a better interaction between european Solanaceae germplasm holders and Solanaceae omics researchers

Marie-Christine Daunay, Willem van Dooijeweert, Roel Hoekstra, Lukas A.  
Mueller

### ► To cite this version:

Marie-Christine Daunay, Willem van Dooijeweert, Roel Hoekstra, Lukas A. Mueller. Towards a better interaction between european Solanaceae germplasm holders and Solanaceae omics researchers. 10. Solanaceae Conference: “geno versus pheno”, Oct 2013, Beijing, China. hal-02804268

**HAL Id: hal-02804268**

**<https://hal.inrae.fr/hal-02804268>**

Submitted on 5 Jun 2020

**HAL** is a multi-disciplinary open access archive for the deposit and dissemination of scientific research documents, whether they are published or not. The documents may come from teaching and research institutions in France or abroad, or from public or private research centers.

L'archive ouverte pluridisciplinaire **HAL**, est destinée au dépôt et à la diffusion de documents scientifiques de niveau recherche, publiés ou non, émanant des établissements d'enseignement et de recherche français ou étrangers, des laboratoires publics ou privés.

# Sol Newsletter



Issue number 34  
October 2012  
Editor: Joyce Van Eck  
Co-editor: Ruth White

## In this issue

### Community News

SOL 2013.....p.1

SOL Co-Chair  
Reorganization.....p.2

Update on SOL Afri.....p.4

### Research Updates

ROOTOPOWER.....p.5

FISH Update Steve Stack's  
Lab.....p.6

### Highlight Articles

Iconography: Tomato.....p.7

Solanaceae Germplasm  
Holders and Omics  
Researchers.....p.11

**Job  
Announcements**.....p.12

**Publications**.....p.13

**Conferences**.....p.14

### Solanaceae Recipes

Beer and Coffee Chili.....p.15

Red Pepper Eggplant  
Chili.....p.16

Texas-Style Skillet  
Cornbread.....p.16

## Community News

### The 10th Solanaceae Conference: "geno versus pheno"

Beijing, China  
October 13 - 17, 2013



Friendship Hotel, Beijing, China

Dear Colleagues, it is our great pleasure to announce that the 10<sup>th</sup> Solanaceae Conference will be held at the Beijing Friendship Hotel in Beijing, China, from October 13 - 17, 2013. On behalf of the organizing committee, we cordially invite you to take part in this conference. We plan to make this conference a memorable and valuable scientific experience and communication for all the attendees.

As in past years, SOL 2013 would bring together a spectrum of scientists working on different aspects of *Solanaceae* ranging from biodiversity, genetics, development and genomics. With the availability of the high-quality genome sequence of tomato, studies of the SOL community have extended from structural genomics into virtually every aspect of functional genomics. SOL 2013 would be a forum to discuss the impact of this reference genome on different aspects of Solanaceae studies. Meanwhile, a battery of high-throughput technologies, including transcriptomics, proteomics and metabolomics, are leading the way in providing new insights into the inner workings of plant cells. Importantly, the cell biology toolbox, which is previously mainly restricted to animal and yeast cells, has finally been built up in the *Solanaceae* allowing researchers to establish the fundamental linkage between genotypes (geno) versus phenotypes (pheno). The conference would also provide a forum to sit together and create a roadmap for the future of the Solanaceae Community.

The conference website ([www.sol2013.org](http://www.sol2013.org)) will provide you with up-to-date information i.e. registration, abstract submission, hotel accommodation, pre- and post-tours etc.

October is the best season to visit Beijing as well as the rest of the country. You can expect plenty of sunny weather, fairly low levels of rainfall and pleasant temperatures. We look forward to seeing you all in Beijing in October 2013.

#### Co-chairs SOL 2013

Jiayang Li (Institute of Genetics and Developmental Biology, CAS)  
Yongbiao Xue (Institute of Genetics and Developmental Biology, CAS)  
Chuanyou Li (Institute of Genetics and Developmental Biology, CAS)

#### Local Organizing Committee

Chuanyou Li (Institute of Genetics and Developmental Biology, CAS)  
Yuanying Wang (Tobacco Research Institute, CAAS)  
Zhongfeng Zhang (Tobacco Research Institute, CAAS)  
Yongchen Du (Institute of Vegetables and Flowers, CAAS)  
Sanwen Huang (Institute of Vegetables and Flowers, CAAS)  
Zhibiao Ye (Huazhong Agricultural University)  
Ying Wang (Wuhan Botanical Garden, CAS)  
Yongsheng Liu (Sichuan University)  
Han Xiao (Shanghai Institutes for Biological Sciences, CAS)  
Wencai Yang (China Agricultural University)  
Changbao Li (Vegetable Research Center, Beijing Academy of Agriculture and Forestry Sciences)  
Jingfu Li (Northeast Agricultural University)  
Tingting Huang (Qingdao Academy of Agricultural Sciences)

#### Hosted by:

Institute of Genetics and Developmental Biology, Chinese Academy of Sciences  
The State Key Laboratory of Plant Genomics

### International Organizing Committee

Alan Andrade (Brazil)	Doil Choi (Korea)	Joyce Van Eck (USA)
Allen Van Deynze (USA)	Ezura Hiroshi (Japan)	Lukas Mueller (USA)
Akhilesh Tyagi (India)	Giovanni Giuliano (Italy)	Mondher Bouzayen (France)
Ally Fernie (Germany)	Glenn Bryan (UK)	René Klein Lankhorst (Netherlands)
Christian Bachem (Netherlands)	Antonio Granell (Spain)	Sanwen Huang (China)
Chuanyou Li (China)	Jeanne Jacobs (New Zealand)	Sandra Knapp (UK)
Dani Zamir (Israel)	Jim Giovanonni (USA)	

### Scientific Sessions

Session I. Hormone Signaling and Development	Session VII. Translational Genomics and Breeding
Session II. Fruit Biology	Session VIII. Biodiversity and Evolution
Session III. Biotic Interactions	Parallel Session IX. Tomato
Session IV. Abiotic Interactions	Parallel Session IX. Pepper/Eggplant/Coffee
Session V. Systems biology	Parallel Session X. Potato
Session VI. Metabolomics and Proteomics	Parallel Session X. Tobacco

## From the SOL Co-Chairs

Apart from SOL-2012 in Neuchâtel being a very successful meeting at a wonderful venue, it also marked a number of changes to the committee of the SOL organization that we call the SOL Co-Chairs. Precipitating these changes was the retirement of René Klein Lankhorst as Chairperson. In his last meeting as chairman, he implemented changes in personnel to get new people involved and to broaden the scope of the committee. As a result, we now have three new members (Alan Andrade, Christian Bachem, and Lukas Mueller) and a returning member Sandy Knapp, who has also taken on the task of chairperson. As "old hands", Mathilde Causse, Jeanne Jacobs, Glenn Bryan, and Sanwen Huang are continuing as co-chairs. Along with René, Harry Klee has also left the committee. The current co-chairs would like to thank the exiting members for their sterling work and we would also like to introduce ourselves in the form of short CVs. In the next issue of the Sol Newsletter, we plan to give you more on our tasks and vision for the future of SOL.

### The Reorganized SOL-Co Chair Group 2012



**CHRISTIAN BACHEM, new SOL co-chair:** Christian is a German national but was born in Mexico, educated in the UK, and studied agriculture at the University of Bonn, continuing with a PhD at the MPI in Cologne under the late Jeff Schell. After a short post-doc in Edinburgh, Christian joined the Keygene Company in the Netherlands and four years later, transferred to Wageningen University where he has worked as a research scientist and university teacher at the lab of Plant Breeding since 1991. His main scientific interest is in the functional genomic analysis of potato tuber development and quality traits in *Solanaceae*. He also participates in and coordinates a number of large research projects on national, European, and international levels and is an active member of organizations such as Eucarpia, EPSO, the PGSC and now SOL.



**ALAN C. ANDRADE, new Sol co-chair:** Alan is a Brazilian plant scientist. He has a BSc in Agronomy and MSc in seed physiology from the University of Lavras (UFLA-MG). He got his PhD from Wageningen University working on fungal ABC transporters at the Department of Phytopathology. After his graduate studies, he continued working in Wageningen, as a postdoc (STW project), for three years. In 2002, he became an employee of Embrapa Genetic Resources and Biotechnology (Brasilia-DF, Brazil) and established his research group focused on coffee genomics. His main scientific interest is functional genomic analysis of drought tolerance in coffee. In addition, he aims to develop the genomic tools for applied coffee breeding and the establishment of a Genome Wide Selection program for coffee. He is also involved in teaching, taking part of the graduate program on plant biotechnology at the University of Lavras. He was the coordinator of the Coffee Biotechnology Program of the Brazilian Consortium of Coffee R&D and also took part in coordinating the Brazilian Coffee-EST project. In 2005, he was among the founding members of The International Coffee Genomics Network-ICGN and is a member of the steering committees of ICGN, The International Coffee Genome Sequencing Consortium, and the National Institute of Science and Technology of Coffee (INCT-Café).



**GLENN BRYAN, SOL co-chair since 2009.** Glenn leads the Potato Genetics group at The James Hutton Institute (JHI) in Dundee, Scotland. He obtained his BSc degree at London University in Genetics and a Masters in Applied Genetics at Birmingham University. He studied for his PhD at Washington University in St Louis, USA, where he worked on the transposable element *Mariner* in *Drosophila*. Before his graduate work he worked as a dairy cattle quantitative geneticist for four years. In 1992 he started working on plants, with the late Mike Gale at the John Innes Centre, where he developed molecular markers for wheat and rice. In 1996 he moved to SCRI to start a potato molecular genetics programme. In 2009 he became the leader of the Potato Genetics group at JHI, which was formed in 2011. He is also the lead contact for JHI's Centre for Research on Potato and other Solanaceous plants. He organized the SOL2010 meeting in Dundee. His main research interests are: potato breeding, the genetics of resistance and tuber traits in potato, and potato domestication and evolution.



**MATHILDE CAUSSE, Sol co-chair since 2009.** Mathilde is a French plant geneticist. She got her PhD from the University of Paris, but did all her research project in Ivory Coast on African rice genetic resources. Then she continued as a postdoc on rice mapping in Steve Tanksley's laboratory (Cornell U, USA). In 1990, she was recruited by the French research institute of Agronomy (INRA), where she first worked on maize genetics and QTL mapping in Orsay. In 1995, she moved to Avignon to develop a program on tomato fruit quality. Since 2004 she is head of the research unit on Genetics and Breeding of fruit and vegetables of Avignon (a lab with more than 100 people working on 8 species, which includes tomato, pepper, eggplant, and potato). Her main scientific interest is in plant breeding, natural genetic diversity of complex traits, and the use of molecular markers to improve breeding efficiency and answer consumer requests for better tomatoes. She has coordinated several scientific projects at the national level and was leader of the module on the organoleptic quality of the EUSOL project.



**SANWEN HUANG, Sol co-chair since 2009.** In 2005, Sanwen Huang obtained his Ph.D. from the Graduate School of Experimental Plant Sciences in Wageningen University and Research Centre, the Netherlands. In 2005, he established the Laboratory of Vegetable Genomics at the Institute of Vegetables and Flowers, Chinese Academy of Agricultural Sciences (CAAS). Since 2007, he coordinates the International Cucumber Genome Initiative that has successfully sequenced the 367Mb genome. His team sequenced the genome of a monohaploid potato genotype, a critical contribution to the Potato Genome Sequencing Consortium. He is also on the steering committees of both the International Potato and Tomato Sequencing Consortium and a co-chair of SOL since 2009. He is now working on genomics of plant breeding, using cucumber, tomato, and potato as subjects in particular. He is the principal investigator of several national research projects, including the recent 973 project "The genomics and molecular breeding of vegetable quality traits (2012-2016)" granted by the Chinese Ministry of Science and Technology, which is a teamwork from 12 institutions nationwide.



**JEANNE JACOBS, SOL co-chair since 2009.** Jeanne is a plant geneticist and the team leader for Genome Analysis in the Breeding & Genomics group at The New Zealand Institute for Plant & Food Research (P&FR), based in Christchurch. She was born, raised, and educated in the Netherlands. She first started working on Solanaceae during her PhD in Plant Breeding at Wageningen University when she developed a molecular genetic map of potato. With an interruption for post-doctoral research into disease resistance in lettuce (at UC Davis) and apomixis in the weed *Hieracium* (Crop & Food Research, NZ), she has worked on Solanaceae ever since. Jeanne is the New Zealand PI for the Potato Genome Sequencing Consortium and an active member of the PGSC steering committee. In recent years, she helped instigate the joint Australia/New Zealand genome sequence project on *Nicotiana benthamiana*. Her main interests are genomics and genetics of potato, especially exploring natural allelic variation for a variety of traits, and implementing this knowledge into the P&FR breeding programme to achieve "Better cultivars faster™".



**SANDY KNAPP, new chair of Co-Chairs 2012**, joint SOL chair with Dani Zamir from 2005-2007. Sandy is a plant taxonomist working at the Natural History Museum in London, UK. She got her PhD at Cornell University (not working in the Tanksley Lab, but in the Bailey Hortorium on the taxonomy of a large group of South American species of *Solanum*!); while doing her PhD she spent much of her time collecting plants in South and Central America. She went to the Natural History Museum in 1992 to head Flora Mesoamericana – an international Spanish-language project that is describing all of the vascular plants in the region between the Isthmus of Tehuantepec in México to the Panamá/Colombia border. Mesoamerica is the last land bridge on Earth, and is home to approximately 18,000 species of flowering plants and ferns. She is an expert on the Solanaceae, and has spent her career discovering and describing the diversity of the members of this most fascinating of families. To date she has described more than 100 new species of *Solanum*, and there are more in the works. She is also the author of several popular books on the history of science and botanical exploration, including the award-winning *Potted Histories* (2004). In 2009 she was honored

by the Peter Raven Outreach Award by the American Society of Plant Taxonomists and awarded the UK National Biodiversity Network's John Burnett Medal. Her current projects include Flora Mesoamericana, a world-wide taxonomic monograph of the megadiverse genus *Solanum* (Solanaceae), collaborative research in phylogenetics and genomic evolution of Solanaceae, and field guides for conservation in the Neotropics. She has coordinated several scientific projects in the UK and internationally and led the programme of outreach and education in the EU-SOL project.



**LUKAS MUELLER, new SOL co-chair.** Lukas studied biochemistry at the Federal Institute of Technology (ETH) in Zurich, Switzerland, and obtained his PhD in Biochemistry at the University of Lausanne, Switzerland, in 1997. After postdoctoral studies with Prof Virginia Walbot in Stanford, he joined the Arabidopsis database, TAIR (<http://arabidopsis.org/>), as a scientific curator. In 2003, he moved to Cornell University in Ithaca, NY, in the laboratory of Prof. Steven Tanksley, where he led the SOL Genomics Network (SGN, <http://solgenomics.net/>), a major database for Solanaceous plants, including tomato, potato, pepper, eggplant, and petunia. In 2008, he became a group leader at the Boyce Thompson Institute for Plant Research (<http://bti.cornell.edu/>), where he heads a bioinformatics group, with the SGN database being a continued focus of his work. A major theme of the present database work is the genotype to phenotype problem, and its application to breeding. He has been involved with the tomato genome-sequencing project since its inception, and contributes to other genome projects from the Solanaceae and other plant families.

## Afri-Sol Members Meet and Launch a New Website

*Damaris Odeny, John Jagwe, Elizabeth Kizito, Martin Yeboah, Felistus Chipungu, Abdoulaye Seck, Richard Mithen, René Klein Lankhorst*

Afri-Sol is a network of scientists and other stakeholders with interest in African Solanaceae species. The network was created in early 2011 and brings together a multidisciplinary team of stakeholders with the goal of unlocking the potential of African solanaceous species biodiversity for the improvement of nutrition, health and income. With funding from the Platform for African-European Partnerships in Agricultural Research and Development (PAEPARD), a representative team from Afri-Sol, together with two European partners met in Kampala, Uganda (June 11 -13, 2012) with the goal of defining the scope of Afri-Sol, as well as establishing an African – European partnership. During the meeting, Afri-Sol members highlighted the following as the major focus areas of the network:

1. **Gathering Indigenous Knowledge:** Different local communities all over Africa use plants of the Solanaceae family for various purposes. A comprehensive database on the uses, production, processing and informal market systems for the various crops will not only enhance their value, but also promote their use across different regions.
2. **Assessment of Genetic Resources:** It will be important to determine the extent of germplasm collections, explorations, and conservation that have been done in the past, or are on-going in the region. Such information will form the basis for future work on genetic resources including explorations and more exhaustive collections, characterization, establishing core collections, germplasm sharing, preliminary screening, gene mining and breeding.
3. **Basic Biology:** Due to limited research, very little is known on the basic biology of these species. There is need to undertake more comprehensive studies on the cytogenetics, biochemical and molecular components, as well as develop molecular tools and proper ontology for the future characterization of African Solanaceae.

4. **Nutrition and Health:** Unknown to many, some African nightshades, including *Solanum scabrum* and *Solanum villosum* are edible and very nutritious but also have medicinal and industrial value. The increasing concerns on narrowing food diversity and the recognition of the potential role of vegetables in combating micronutrient deficiencies, call for renewed research interest in underutilized nutritious vegetables such as those of the Solanaceae family. There is therefore a need to determine and document the micronutrient and bioactive components of these plants, as well as establish systems for human intervention and social economics studies.
5. **Seed systems:** Seed systems remain an important aspect of improving crop production and will be an invaluable component of enhancing the utilization of African solanaceous crops. There is need to identify relevant stakeholders in seed production, seed markets, quality management and regulation, as well as determine optimum seed management conditions for the benefit of the producers and consumers.
6. **Value addition and Markets:** Beyond the fact that many local communities have been utilizing these plants for a long period of time, can we also demonstrate that there is real demand for them in both formal and informal markets? Are there any known product development efforts in the region and/or elsewhere? What are the post-harvest and industrial applications of these crops? What are the consumer preferences and how can those preferences be linked to crop improvement?
7. **Capacity building:** There is generally lack of expertise in Africa for advanced research that would enhance knowledge of the African solanaceous species. There is particularly need to build capacity in taxonomy, the "Omics" (genomics, proteomics, metabolomics), human intervention studies, bioinformatics and biochemistry. Building infrastructure and developing relevant curriculum at various research and higher learning institutes will significantly enhance the utilization of these crops and promote their contribution to poverty alleviation and food security.

Members at the workshop also defined the network structure and appointed key leaders and regional representatives. The network currently has six international advisory board members. For more information on Afri-Sol, and to register as a member, or provide feedback, visit [www.Afri-Sol.net](http://www.Afri-Sol.net). You can also follow us on Twitter: @AfriSolnet.

Workshop participants, from left: Richard Mithen (advisory board member), John Jagwe (private sector representative), René Klein Lankhorst (advisory board member), Damaris Odeny (chairperson), Dennis Bisase (FarmGain Africa), Elizabeth Kizito (secretary), Martin Yeboah (West African regional representative)



## Research Updates



ROOTPOWER ([www.rootpower.eu](http://www.rootpower.eu)), a KBBE (Knowledge Based Bio-Economy) project funded under the 7<sup>th</sup> Framework Programme of the European Union (grant number 289365), is innovating in the field of root-science research in Europe. Its consortium, made up of 13 partners from countries such as Spain, United Kingdom, Germany, and Turkey, gathers top research scientists from a wide array of root-related fields.

ROOTPOWER aims to develop new tools, targeted to roots, to enhance agronomic stability and sustainability of dicotyledonous crops under multiple and combined stress conditions. Central to its approach is the use of tomato as a model species, since its

genome sequence is already available and it can be very easily grafted. This surgical technique attaches histologically shoot and root systems that are genetically different, allowing precise assessment of the effect of altering root genotype on crop performance of the grafted variety. This project will analyze and exploit the natural genetic variability existing in a recombinant inbred line (RIL) population from a cross between *Solanum lycopersicum* and *S. pimpinellifolium* and other selected mutants and functional lines (used as rootstocks) for their performance under multiple abiotic stresses and for their biotic interaction with natural soil microorganisms (mycorrhiza and rhizobacteria). ROOTOPOWER will obtain genetic information and physiological understanding of mechanisms vital for high-performing root systems.

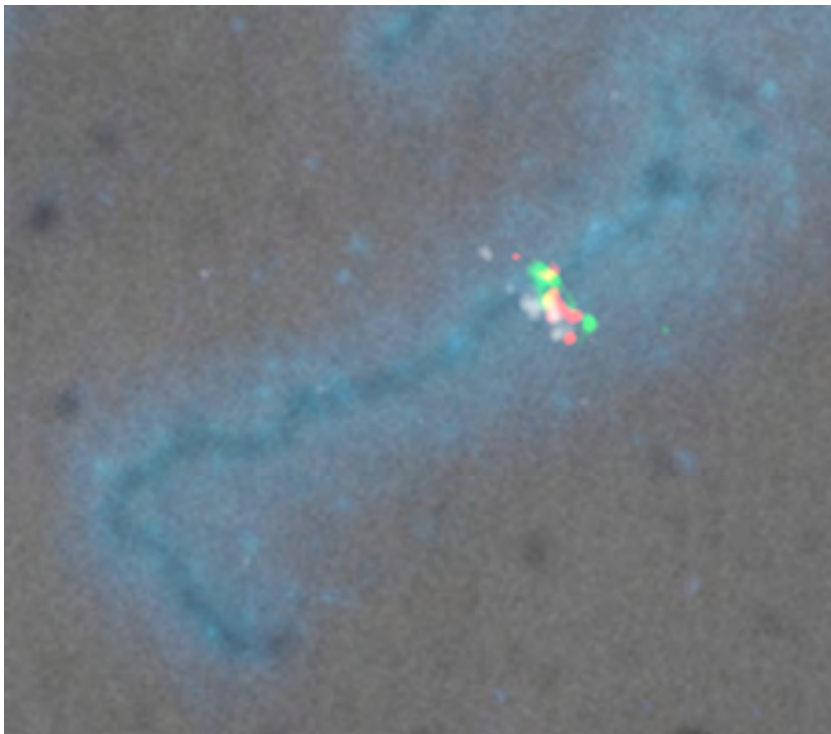
With an initial budget of circa 3,000,000M€ and a foreseen duration of 4 years, ROOTOPOWER seeks to improve crop stress resistance and develop more resource-efficient crops, thus helping producers and breeders deal with the predicted impacts of climate change and to overcome the consequences of unsustainable agricultural practices that are causing soil degradation and depleting natural resources.



## Update from Steve Stack's Lab at Colorado State University

*Lindsay Shearer*

The Stack lab at Colorado State University has used fluorescence in situ hybridization on tomato pachytene synaptonemal complex spreads to place a total of 499 BACs on the tomato FISH map. Fifty-two of these BACs have been placed on the FISH map since the last edition of the Sol Newsletter. A majority of the new BACs are on the borders of sequenced scaffolds on chromosomes 2, 4, 7, 8, and 11. The distance between each pair of scaffolds has been estimated for each of these chromosomes.



In addition, ten of the new BACs are chromosome 0 BACs that cannot be associated with the sequence on any existing scaffolds. By FISH, we have observed that these BACs are in gaps between scaffolds. This being the case, these chromosome 0 BACs should be entrées to sequencing the gaps in which they are found. The 499 localized BACs are distributed at 509 loci among the chromosomes as follows: 1 - 108; 2 - 44; 3 - 59; 4 - 39; 5 - 28; 6 - 19; 7 - 43; 8 - 31; 9 - 24; 10 - 55, 11 - 34, 12 - 25. The total number of loci reflects the fact that there are now ten BACs that have each been localized to two positions

The figure illustrates FISH labeling of three BACs on the long arm of chromosome 2. BAC SL\_s0101F18 (white) and SL\_EcoRI0034J17 (green) are at the borders of two adjacent scaffolds (SL2.40sc03665 and SL2.40sc03766 respectively). We have estimated the unsequenced area between these two scaffolds to be approximately 1.3 Mb. One of the chromosome 0 BACs, SL\_MboI0010K24 (red), falls within the unsequenced gap between the two scaffolds.





with lateral shoots and clustered large flat and ribbed fruits. A colored illustration in the Camerarius' *Florilegium* (*MS 2764*) dated 1576-1589, represents a branch with leaves, a truss of flowers, and globular slightly flattened green and red fruits.

In 1585, Durante published a stylized drawing, with globular flattened and ribbed fruits. Matthioli (1586) displayed on a single woodcut several fruit types (small or large, globular or flattened, ribbed or smooth. The simplified painted image by Aldrovandi (second half of the 16<sup>th</sup> century) represents only a branch with two flattened, ribbed, reddish and green fruits, one inflorescence and four leaves. A tomato illustration dating to the close of the 16<sup>th</sup> century can be found in *The Drake Manuscript* written by an anonymous Frenchman (Fig.7) (Janick, 2012). Realistic tomato fruits (still large, globular, flattened and ribbed) as well as clearly recognizable leaves, are found on a bronze door of the Pisa cathedral (Fig. 8) dated to 1601. The texts by Gerard (1597) and Parkinson (1629) describe fruits of sizes varying between a goose egg and a large apple, bright shining red, pale reddish, yellow or pale yellow. Several authors mention the "foul" odor of tomato vegetation.

### Names

The name *tomate* (Spanish, French) and *tomato* (English) derive from *tomatl*, *tomates*, or *miltomates* in the Nahuatl language (Estrada-Lugo, 1989). However, this name was applied to different solanaceous plants, including species of *Solanum* (*Lycopersicon*), *Physalis*, and *Saracha*.

There were many names for tomato in 16<sup>th</sup> century Europe. Some authors thought that the plant was the *Lykopersikon* mentioned by the Greek physician Galen (131–ca. 200), or the *Glaucium* of Dioscorides. *Solanum pomiferum* and other similar denominations are found in various herbals, such as *Pomum amoris*, *Poma amoris*, *Pomum aureum*, *Pomum aureium*, *Solanum pomiferum vel amoris*, *Solanum pomiferum aureum*, *Mala aurea*, *Aurea Apffelkraut*, *Gulden Appelen* (High and Low German); and *Golden Apples*, *mala*, *Lycopersicum* (Latin); *Pomi d'oro* (Italian); *Pommes d'amours* and *Pommes dorées* (French); *Gold Oppffel*, *Goldt Apffelkraut*, *Gulden Appelen* (High and Low German); and *Golden Apples*, *Amorous apples*, *Apples of love*, *Love apples* (English).

The name *Lycopersicon*, also spelled *Lycopersicum*, means peach (*persikon*) of wolf (*lykos*) and indicates some distrust toward this plant. The name was taken from the Galen's *Lykopersikon* which designated a plant from Egypt whose sap was malodorous. In the 18<sup>th</sup> century, the species was named *Solanum lycopersicum* by Linnaeus, and then as *Lycopersicon esculentum* by Miller, but modern taxonomy has brought tomato back to the genus *Solanum* (Spooner et al. 1993).

While the majority of tomato fruits cultivated at present are red, the appellation *gold* or *yellow* which was commonly used in the past, indicates that many of the early tomatoes introduced were yellow. Why it was named *Love apple* is unclear. This popular name could be linked to the red color, which is associated with the flush of passion. Parkinson (1629) reported that he had tomatoes in his garden only for curiosity and for the amorous aspect or beauty of the fruit.

### Uses

Tomatoes are described as medicinal plants in the *Florentine Codex*. Dodoens (1557) noticed that the plant was found only in the gardens of some herbalists; flowered in July and August, and ripe in August and September. Gerard (1597) stated that the *Apples of love* grew in Spain, Italy, and such hot countries. Dodoens (1557) and Gerard (1597) considered tomato of a "cold" nature and quite different from the dangerous mandrake.

Gerard (1597) believed that the fruits brought very little nourishment to the body, while Dalechamps (1653) affirms that this food was bad and corrupted. In 1600 Olivier de Serres suggested that the fruits, although not good for eating, were appropriate as medicine and were pleasant to handle and smell.

Despite some negative opinions, tomatoes clearly were consumed from the beginning of their presence in Europe, first in sauces, according to Olivier de Serres (1600, ed. 1804). Matthioli (1544) as well as Gerard (1597) and Dalechamps (1653) noted that they were commonly fried in or boiled with oil, salt, and pepper. They were eaten in Spain and Italy with oil, vinegar, and pepper as a sauce for meat (Gerard, 1633).



**Figure 3.** Tomato, Oellinger 1553, Manuscript 2362: (Left) folio 541; (Center) folio 543; (Right) folio 545. Source: Erlangen, University library.



**Figure 4.** Tomato, Fuchs' Vienna Codex 11 122, 2(3), folio 161, painted by A. Meyer 1549–1556. Source: Meyer et al. 1996. Copyright: Austrian National Library, picture archive, Vienna.



**Figure 5.** Tomato, Gesner, Ms 2386, folio 42, dated 1553. Source: Erlangen, University Library.

## Conclusion

The tomato was well known by the Aztecs, but it is difficult, in the absence of New World iconography, to ascertain when tomato is involved in the textual sources, given that the common Nahuatl word *tomatl* was used for several solanaceous plants, including tomato. The first European description of tomato is by Matthioli (1544), while the first published illustration is by Dodoens and dates to 1553. Renaissance iconography shows that a great diversity of fruit shapes, sizes, and colors was early available in Europe, with a dominance of large multiloculate, ribbed fruits. The common use of names involving "gold" suggests that many early introductions had yellow fruits. The early naturalists clearly knew that tomato was related to the European nightshades, and hence they considered it with some suspicion in view of the European antipathy toward these plants. The many tinted early tomato illustrations, such as those of Oellinger, Fuchs, and Gesner demonstrate that botanists were eager to include this new species into their medico-botanical treatises. Soon after, tomato was rapidly adopted as a food crop in southern European countries where it well adapted.

## References

- Acosta, de J. 1589. *Historia Natural y Moral de las Indias*. Ed. Seville (1st ed.). [sources: (1) French translation: *Histoire Naturelle et Morale des Indes Occidentales*. Trad. De J.Rémy-Zéphyr. Ed. Payot, Paris, 1979. (2) English translation: *The Natural and Moral History of the Indies*, by Father Joseph de Acosta. Reprinted from the English translated edition of Edward Grimston, 1604, and edited by Clements R. Markham. Hakluyt Society Publications, London: 1880.]
- Aldrovandi U. [See manuscripts list, University Library Bologna, Italy, *Il Teatro della Natura*].
- Baumann, B., H. Baumann, and S. Baumann-Schleihauf. 2001. *Die Kräuterbuch-Handschrift des Leonhardt Fuchs*. Verlag Eugen Ulmer GmbH & Co, Stuttgart, Germany.
- Camerarius, J. *Camerarius Florilegium* [See manuscripts list, Erlangen-Nürnberg University, *MS 2764*].
- Charnay, D. 1996. *Hernán Cortés, la conquête du Mexique*. Traduction en français par D. Charnay (reprint 1896). Ed. La Découverte, Paris.
- Dalechamps, J. 1653. *Histoire Générale des Plantes, contenant XVIII livres également departis en deux tomes, Tirée de l'exemplaire latin de la bibliothèque de Mr Jacques Dalechamp, puis faite françoise par Mr Jean des Moulins médecins très fameux de leur siècle : où sont portraites et descrites infinies plantes, par les noms propres de diverses nations, leurs espèces, forme, origine, saison, tempérament naturel & vertus convenables à la médecine ...* Philip. Borde, Laur. Arnaud, & Cl. Rigaud, Lyon.
- Daunay M.C., and Janick J. 2008. Early history and iconography of the Solanaceae: 2. Potato. *SOL Newsletter* 21: 5-7.
- Daunay, M.-C., Janick, J. and Laterrot, H. 2007. Iconography of the Solanaceae from Antiquity to the XVIIIth Century: a Rich Source of Information on Genetic Diversity and Uses. In *Solanaceae VI: Genomics meets Biodiversity*. Ed. board D.M. Spooner, L. Bohs, J. Giovannoni, R.G. Olmstead, D. Shibata. *Acta Hort.* 745:59-88.
- Daunay, M.-C., Laterrot, H., and Janick, J. 2008. Iconography and history of Solanaceae: Antiquity to the XVII<sup>th</sup> Century: *Horticultural Reviews* 34: 1-111 + 8 plates.
- De Candolle, A. 1890. *Origins of cultivated plants*. Appleton and Company, New York.
- Dibble, C.E., and A.J.O. Anderson. 1963. *General history of the things of New Spain, Fray Bernardino de Sahagun, Book 11— Earthly Things*. Translated from Aztec into English with notes and illustrations in thirteen parts. Part XII. Publ. by the School of American Research and the University of Utah. *Monographs of the School of American Research and the Museum of New Mexico* 14, part XII. Santa Fe, New Mexico.
- Dodoens, R. 1553. *Trium Priorum de Stirpium Historia Commentariorum imagines ad vivum expressae. Una cum indicibus, Graeca, Latina, Officinarum, Germanica, Brabantica, Gallicaq; nomina complectentibus. Habet & MuscaSplenem Et formicae sua bilis ineste. Ex officina Ionannis Loei, Antverpiae.*
- Dodoens, R. 1557. *Histoire des plantes. En laquelle est contenue la description entière des herbes, c'est-à-dire leurs espèces, forme, noms, tempérament, vertus et opérations : non seulement de celles qui croissent en ce país mais aussi des autres estrangères qui viennent en usage de médecine. Ian Loë, Anvers [Translation from Dutch into French by Charles de l'Ecluse of R. Dodoens, 1554: De stirpium historia commentariorum imagines ad vicum artificiosissime expressae: una cum marginalibus annotationibus. Item eiusdem. Annotationes in aliquot prioris tomi imagines qui trium priorum librorum figuras complectitur. Ex officina Christophori Plantini. Antverpiae].*



**Figure 6.** Tomato. Gesner, Ms 2386, folio 37v, dated 1565. Source: Erlangen, University Library.



**Figure 7.** Illustration of tomato in the Drake manuscript (end of 16<sup>th</sup> century). Source: The Drake manuscript.



**Figure 8.** Large, ribbed tomato with leaves on bronze door of the Pisa cathedral, Italy, 1601. Source: J. Janick.

- Dodoens, R. 1574. *Pvrgantivm aliarvmqve eo facientivm, tvn et radicvm, conuoluulorum ac deletariarvm herbarvm historiae libri IV. Ex officina Christophori Plantini, Antuerpiae.*
- Dodoens, R. 1608. *Cruydt-Boeck. Met Biivoegsels achter elck Capittel, uit verscheyden Cruydtbescrijvers: item in't laetste een Beschrijvinge vande Indiansche Gewassen meest getrocken uit de schriften van Carolus Clusius. Tot Leyden, Inde Plantijnsche Druckerije van François van Ravelingen, Leyden.*
- Durante, C. 1585. *Herbario nuovo configure che rappresentano le vive piante che nascono in tutta Europa, et nell'Indie. Per Iacomo Bericchia, e Iancomo Turnierii, Rome.*
- Estrada-Lugo, E.I.J. 1989. *El codice Florentino su informacion etnobotanica. Colegio de Postgraduados, Institución de Enseñanza e Investigación en Ciencias Agrícolas, Montecillo, Mexico.*
- Fuchs, L. 1542-1565. *Vienna Codex.* [See manuscripts list, Vienna National Library, Cod. 11117–11125].
- Gerard(e), J. 1597. *The herball of general historie of plants.* John Norton, London.
- Gerard(e), J. 1633. *The herbal or general history of plants. The complete 1633 edition as revised and enlarged by Thomas Johnson.* [Facsimili, Dover, New York. 1975]
- Gesner, C., 1565. [See manuscripts list, Erlangen-Nürnberg University Library, MS.2386.]
- Harlan, J.R., 1975. *Crops and man. Am. Soc. Agron., Crop Sci, Soc. Am., Madison, WI.*
- Hodge, M.G. 1994. *Le marché aztèque, p. 64. In: Le nouveau monde et le pacifique. Bordas, Paris (1st ed. Weldon Owen Pty Limited & Bra Böckers AB, 1994).*
- Janick J., and Daunay M. 2007. *History and iconography of the Solanaceae: 1. Mandrake, a plant at the intersection of reason and irrationality. SOL Newsletter 14: 3-4.*
- Janick J., 2012. *Revelations from Histoire Naturelle des Indes known as The Drake manuscript. Chronica Horticulturae 52(1): 14-22.*
- Jenkins, J.A. 1948. *The origin of the cultivated tomato. Econ. Bot. 2:379–392.*
- Matthioli, P.A. 1544. *Di Pedacio Dioscoride Anazarbeo libri cinque, Della historia e materia medicinale tradotti in lingua volgare Italiana da M. Pietro Andrea Matthiolo Sanese medico. Con amplissimi discorsi, et comentii, et dottis, sime annotationni, et censure del medesimo interprete. Dacui potra ciascuno facilmente acqui stare la vera cognitione de semplicit non solamente scritti da Dioscoride, ma da altri an tichi, & moderni scrittori, et massimamente da Galeno. La cui dottrina intorno a tale faculta tutta sedelmente interpretata si ritrova posta ne proprii luogui ... Et dello Illustriß. Senato Veneto per anni. X.*
- Matthioli, P.A. 1554. *Petri Andreae Matthioli Medici Senensis Commentarii, in libros sex Pedacii Dioscoridis Anazarbei, de medica materia. In officina Erasmi, apud Vincentium Valgrisium, Venetijs.*
- Matthioli, P.A. 1586. *De plantis epitome utilissima. Francofurti as Moenum.*
- McMeekin, D. 1992. *Representations of pre-Columbian spindle whorls of the floral and fruit structure of economic plants. Econ. Bot. 46:171–180.*
- Meyer, F.G., E.E. Trueblood, and J.L. Heller. 1999. *The great herbal of Leonhardt Fuchs: Di Historia stirpium commentarii insignes, 1542. Vol. 1, Commentary. Stanford Univ. Press., Palo Alto, CA. [This facsimile was realized from a hand colored copy of the collection of the Hunt Institute for Botanical Documentation, Carnegie Mellon University].*
- Oellinger, G. 1553. [See manuscripts list, Erlangen-Nürnberg University, MS 2362].
- Öllinger, G., and Quicchelberg S. 1996. *Magnarum Medicine partium herbariae et zoographiae imagines. Farmmikrofiche-Edition des Medizinalkräuterbuchs Ms.2362 der Universitätsbibliothek Erlangen-Nürnberg. Ed. Helga Lengenfelder, München, 1996.*
- Parkinson, J. 1629. *Paradis in sole, paradus terrestris.* Printed by H. Lownes and R.Young. London.
- Peralta, I.E. and D.M. Spooner. 2007. *History, origin and early cultivation of tomato (Solanaceae), p. 13-24. In M.K. Razdan and A.K. Mattoo (eds.), Genetic improvement of Solanaceous crops, vol. 2, tomato. Science Publishers, Enfield, New Hampshire, USA.*
- Sahagún, B. de. 1540–1585. *Florentine codex. Historia Universal de la Cosas de Nueva España. [See manuscripts list, Medici Library, Med. Palat.220].*
- Serres de, O. 1804. *Le théâtre d'agriculture et mesnage des champs. Ed. 1600, rev. ed. 1804; 1996. Actes Sud, Arles, France.*
- Spooner, D.M, G.J.Anderson, and R.K. Jansen. 1993. *Chloroplast DNA evidence for interrelationships of tomatoes, potatoes, and pepinos (Solanaceae). Am. J. Bot. 80:676–688.*
- Walcott Emmart, E. 1940. *The Badianus manuscript (codex Barberini, Latin 241), an Aztec Herbal of 1552. John Hopkins Press, Baltimore (see Plate 69).*
- Wickert, K. 1993. *Das Camerarius Florilegium. Universitätsbibliothek Erlangen-Nürnberg.*

Acknowledgements: The authors thank A. Whipkey (Purdue University, USA) and J. Van Eck (BTI, New York, USA) for assistance with the images.

### Manuscripts

#### **Erlangen University Library, Germany (Universitätsbibliothek, Friedrich-Alexander Universität Erlangen-Nürnberg).**

*MS 2362:* Oellinger G., *Magnarum medicine partium herbariae et zoographiae imagines.* Dated before 1553. [Source: Microfiches in *Magnarum medicine partium herbariae et zoographiae imagines*, G. Öllinger, S. Quicchelberg, ed. Helga Lengenfelder, 1996. [Note: this document should be considered as the first publication of Oellinger's manuscript].

*MS 2386:* Gesner C. (also spelled Gessner K.), *Collectanea ad "Historiam Plantarum" pertinentia sive Fragmenta "Historiae Plantarum" relicta.* 2°. 2 Bde. UB Erlangen-Nürnberg *MS.2386.* Dated before 1565. [Source: Wickert 1993.]. A facsimile of the 8 volumes of this manuscript was published 1970-1980 by *Dietikon-Zürich: Graf* under the title "*Gesner, Conrad: Conradi Gesneri*

*historia plantarum: Kommentar von Heinrich Zoller. Transkription u. Übers. von Martin Steinmann. Künstl. Beurteilung von Karl Schmid.* "Another complete edition but with size reduced illustrations was published later with the title "*Gesner, Conrad: Conradi Gesneri historia plantarum / hrsg. von Heinrich Zoller ....*" by Dietikon-Zürich: Urs-Graf-Verl. 1 (1987). Dietikon-Zürich, 1987. - 2 (1991). Dietikon-Zürich, 1991. In volume 2, plants names are listed in Latin and German.

MS 2764: Camerarius J., *Camerarius Florilegium*. Dated 1576–1589. [Source: Wickert, 1993.]

#### **Medici Library, Florence, Italy (Biblioteca Medicea Laurenziana).**

*Florentine Codex* (1540–1585), by Sahagún, Bernardino de. *Med. Palat.220* [Source: Dibble and Anderson 1963; Estrada-Lugo 1989].

#### **The Morgan Library & Museum, New York, USA**

*The Drake manuscript*, 1996. (Facsimile). André Deutsch Limited, London. <http://www.themorgan.org/collections/works/drake>.

#### **University Library, Bologna, Italy (Biblioteca Universitaria di Bologna).**

*Il Teatro della Natura*, Aldrovandi U. Second half of the 16<sup>th</sup> century. [Source: [www.filosofia.unibo.it/aldrovandi](http://www.filosofia.unibo.it/aldrovandi)].

#### **Vienna National Library, Austria (Österreichische Nationalbibliothek).**

*Vienna Codex 11117–11125* (LXX.C.12): Fuchs codex, known as *Codex vindobonensis Palatinus*. Dated 1542-1565. [Sources: Meyer et al., 1999; Baumann et al., 2001].

## **Towards a better interaction between European Solanaceae germplasm holders and Solanaceae Omics researchers**

Marie-Christine Daunay<sup>(1)</sup>, Willem van Doijeweert<sup>(2)</sup>, Roel Hoekstra<sup>(2)</sup>, Lukas A. Mueller<sup>(3)</sup>

<sup>(1)</sup>INRA, UR1052, Montfavet, France <sup>(2)</sup> Centre for Genetic Resources, the Netherlands (CGN), Wageningen, The Netherlands

<sup>(3)</sup>Boyce Thompson Institute for Plant Research, Ithaca, NY, USA

In Europe, the collaboration between germplasm holders of agricultural and industrial crops has been organized and coordinated by the European Cooperative Programme for Plant Genetic Resources (ECPGR, [www.ecpgr.cgiar.org](http://www.ecpgr.cgiar.org)) for over 30 years. ECPGR has also established the European Genebank Integrated System (AEGIS) initiative (<http://aegis.cgiar.org/>), which is formalizing the long-term commitment of the European countries for conservation and management of crop germplasm. For each crop, including solanaceous crops, the AEGIS initiative is creating a decentralized "European collection" consisting of unique accessions in the public domain, being held by any of the germplasm holders accepting the commitment for long-term conservation on behalf of AEGIS.

ECPGR is structured into crop and thematic groups, including the Solanaceae Working Group ([www.ecpgr.cgiar.org/networks/vegetables/solanaceae.html](http://www.ecpgr.cgiar.org/networks/vegetables/solanaceae.html)) and the Potato Working Group ([www.ecpgr.cgiar.org/networks/sugar\\_starch\\_fibre\\_crops/potato.html](http://www.ecpgr.cgiar.org/networks/sugar_starch_fibre_crops/potato.html)), which set up work plans and meet periodically. ECPGR products are accessible on-line (e.g. for cultivated potato and wild potato, tomato, capsicum peppers, eggplant, pepino, tree tomato, and ground cherry), including centralized crop databases, that are progressively completed. Key activities include the creation of guidelines for seed regeneration and storage, and identification of key (minimum) phenotypic descriptors to be used by the genetic resources community and entered into the European Central Crop Databases. These agreed minimum lists of descriptors have been selected from the full descriptor lists ([www.biodiversityinternational.org/publications/search.html](http://www.biodiversityinternational.org/publications/search.html)) of Biodiversity International (formerly IBPGR, IPGRI) which, for solanaceous crops, were published in 1977 (cultivated potato), 1985 (potato variety descriptors), 1990 (eggplant), 1995 (pepper), 1996 (tomato), and 2004 (pepino). The descriptor list for Tree tomato is in press.

Many European public germplasm holders get insufficient national support for the maintenance, characterization and long-term security of the collections, with damaging consequences in some cases, such as aging seeds, no safety duplication, or even loss of accessions. As a way to remedy to this situation, INRA and CGN organized cooperation between breeding companies for the evaluation and regeneration of germplasm accessions held respectively in France and The Netherlands. This model may also be considered by other germplasm holders. Furthermore, better interactions with the scientific research community are important for determining the value of the germplasm. Possibly also the cost of germplasm maintenance and use in research and breeding can be shared.

On the side of research, the structuring of the international scientific community investigating Solanaceae genetics and "omics", is more recent. The *International Solanaceae Initiative* was initiated by Cornell University in the early 2000s, and under its supervision the consortium *Solanaceae Genomics Network* –SGN– works at enhancing international collaboration and at facilitating exchange of information between scientists working on solanaceous crops, in particular via its website and the annual workshops organized since 2004. While research was anchored in only one or a few genotypes until recently, the capacity of the high throughput and next generation technologies now allow working at the level of germplasm collections. For instance, allele diversity can now be characterized at the species level and new alleles of specific traits can be discovered via association genetics. Hence,

in the coming years, access to and characterization of germplasm are going to be strategic steps, and from the research standpoint, there is clearly a need to strengthen interaction with the community of Solanaceae germplasm holders.

During the SOL 2011 meeting held in Kobe, Japan, it was pointed out that there is a discrepancy between sequencing experiments across species and platforms, which share fundamental data and similar analysis tools, whereas phenotyping experiments have few common standards. The existence of standardized solanaceous crops descriptors set up by Bioversity International (see above) deserves to be promoted among the communities of researchers and germplasm holders. Conversely, germplasm holders need to be made aware of the phenotypic traits that are most needed by "omics" research. In the last few years, the SGN project (<http://solgenomics.net>) has developed vocabularies for the description of phenotypes [Solanaceae Phenotype ontology (SP)], and to allow interfacing with the larger initiatives of the database community [Gene Ontology (GO), <http://geneontology.org>], Plant Ontology (PO, <http://plantontology.org/>) and Phenotype and Trait Ontology (PATO). Some of the Bioversity vocabularies have been mapped to the SP ontology. SGN could therefore play a central role in coordinating phenotypic descriptors and data, and collaboration via common projects would be beneficial to both germplasm and research communities, and contribute solving the post-genomic era problem of linking the phenome (a wide set of phenotypic data) to the genome.

A minimal step towards a better interaction between European Solanaceae germplasm holders and "omicians" is to provide links between the ECPGR Solanaceae Working Group and SGN websites (already available at [www.ecpgr.cgiar.org/networks/vegetables/solanaceae.html](http://www.ecpgr.cgiar.org/networks/vegetables/solanaceae.html)), between the Potato Working Group and SGN, and conversely. Beyond this first step, there is a need to establish a dialogue between the ECPGR Solanaceae Working Group, the Potato Working Group and the ECPGR Documentation and Information Network on one hand, and SGN on the other hand, in order to start building fruitful and sustainable interactions, including improved germplasm access and phenotyping. This could be initiated for instance via a round table to be organized at the 2013 SOL conference in Beijing, involving representatives of all sides.

### **Acknowledgements**

The authors are pleased to acknowledge L. Maggioni and J. Engels (ECPGR, Rome, Italy), J. Prohens (COMAV, Universitat Politècnica de València, Spain), Ch. Sauvage and M. Causse (INRA, UR1052, France) for their helpful comments on draft versions of this paper.

## *Job Announcements*

### **SENIOR Tomato Breeder**

SEMILLAS FITO is a multinational seed company established in 1880 and family owned. It is organized in four divisions: Vegetables, Field Crops, Hobby and Turf. We believe in Innovation, Research and Development as our main pillars and drivers of our growth.

We are currently looking to recruit a competent and confident professional into the position of **Senior Tomato Breeder** to be based in California close to Mexico.

#### **Position Summary**

University graduate in Agriculture or similar with a large experience in breeding (15 years) ready to join an international seed company and lead our tomato breeding programs for Mexico and Brasil.

#### **Main Responsibilities:**

- Proposes and implements breeding programs in Culiacan for Saladette and Bolas types for Mexican and Brazil markets.
- Develop and supervise tomato breeding programs in Culiacan and probably in California.
- Set up tomato trials in Mexico and Brazil. Work jointly with Development team in both countries.
- To be the R&D antenna in US and create contacts and synergies with Universities, research centers and Germplasm Banks.
- Report to R& Director and Tomato Crop Manager

#### **Education, Skills, and Experience Required**

- University degree (Agriculture or Plant Breeding).
- A track record in vegetables breeding
- Readiness to travel across the area
- Ability to build effective relationships with all levels of management.
- Proficiency in MS Office applications.
- Fluency in English, Spanish will be a plus

#### **To apply:**

Send your CV's to [rrhh@semillasfito.com](mailto:rrhh@semillasfito.com)

Last application date is 10/31/12

## POST-DOCTORAL POSITION IN PLANT BIOLOGY AT COLD SPRING HARBOR LABORATORY

A post-doctoral position is available in Zach Lippman's group at Cold Spring Harbor Laboratory to study inflorescence development and evolution in tomato and related Solanaceae. The project will integrate classical and quantitative genetic, transgenic, and transcriptomic/bioinformatics techniques to dissect regulatory mechanisms underlying meristem maintenance and maturation as they relate to the transition to flowering and inflorescence architecture.

A Ph.D. in genetics, developmental biology, or related fields is required. Individuals with appropriate skills from non-plant model systems are also encouraged to apply. Applicants should be highly motivated, creative, enthusiastic, and be willing and able to contribute intellectually in a team environment. Excellent communication skills are required and a strong publication record is a plus.

To apply, please send a single PDF document to [lippman@cshl.edu](mailto:lippman@cshl.edu) including: 1) a cover letter describing your previous experience, summary of research accomplishments, and interest in this position; 2) your CV, and 3) the names of three referees.

## Publications

Araújo WL, Tohge T, Osorio S, Lohse M, Balbo I, Krahnert I, Sienkiewicz-Porzucek A, Usadel B, Nunes-Nesi A, Fernie AR (2012) Antisense inhibition of the 2-oxoglutarate dehydrogenase complex in tomato demonstrates its importance for plant respiration and during leaf senescence and fruit maturation. *Plant Cell* 24:2328–2351.

Chawla R, Shakya R, Rommens CM (2012) Tuber-specific silencing of *asparagine synthetase-1* reduces the acrylamide-forming potential of potatoes grown in the field without affecting tuber shape and yield. *Plant Biotechnology J* 10:913–928.

Girard AL, Mounet F, Lemaire-Chamley M, Gaillard C, Elmorjani K, Vivancos J, Runavot JL, Quemener B, Petit J, Germain V, Rothan C, Marion D, Bakana B (2012) Tomato GDSL1 is required for cutin deposition in the fruit cuticle. *Plant Cell* 24:3106-3121.

Gonzales-Vigil E, Hufnagel DE, Kim J, Last RL, Barry CS (2012) Evolution of TPS20-related terpene synthases influences chemical diversity in the glandular trichomes of the wild tomato relative *Solanum habrochaites*. *Plant J* 71:921–935.

Grandellis C, Giammaria V, Bialer M, Santin F, Lin T, Hannapel DJ, Ulloa RM (2012) The novel *Solanum tuberosum* calcium dependent protein kinase, StCDPK3, is expressed in actively growing organs. *Planta* doi: 10.1007/s00425-012-1732-9.

Guo H, Sun Y, Ren Q, Zhu-Salzman K, Kang L, Wang C, Li C, Ge F (2012) Elevated CO<sub>2</sub> reduces the resistance and tolerance of tomato plants to *Helicoverpa armigera* by suppressing the JA signaling pathway. *PLoS ONE*, doi:10.1371/journal.pone.0041426.

Heijmans K, Ament K, Rijpkema AS, Zethof J, Wolters-Arts M, Gerats T, Vandenbussche M (2012) Redefining C and D in the Petunia ABC. *Plant Cell*. 24:2305-2317.

León-Morcillo RJ, Ángel J, Rodríguez M, Vierheilig H, Ocampo JA, García-Garrido JM (2012) Late activation of the 9-oxylipin pathway during arbuscular mycorrhiza formation in tomato and its regulation by jasmonate signaling. *J. Exp. Bot.* 63:3545-3558.

Lombardi-Crestana S, da Silva Azevedo M, e Silva GFF, Pino LE, Appezzato-da-Glória B, Figueira A, Nogueira FTS, Peres LEP (2012) The tomato (*Solanum lycopersicum* cv. Micro-Tom) natural genetic variation *Rg1* and the DELLA mutant *procera* control the competence necessary to form adventitious roots and shoots. *J Exp Bot* 63:5689-5703.

Loukehaich R, Wang T, Ouyang B, Ziaf K, Li H, Zhang J, Ye Z (2012) *SpUSP*, an annexin-interacting universal stress protein, enhances drought tolerance in tomato. *J Exp Bot* 63:5593-5606.

Matsuo S, Kikuchi K, Fukuda M, Honda I, Imanishi S (2012) Roles and regulation of cytokinins in tomato fruit development. *J Exp Bot* 63:5569-5579.

Mohammed SA, Nishio S, Takahashi H, Shiratake K, Ikeda H, Kanahama K, Kanayama Y (2012) Role of vacuolar H<sup>+</sup>-inorganic pyrophosphatase in tomato fruit development. *J Exp Bot* 63:5613-5621.

Moummou H, Tofack LB, Chervin C, Benichou M, Youmbi E, Ginies C, Latché A, Pech JC, van der Rest B (2012) Functional characterization of SlscADH2, a fruit-ripening-associated short-chain alcohol dehydrogenase of tomato. *J Plant Physiol* 169:1435-1444.

- Muñiz García MN, Giammaria V, Grandellis C, Téllez-Iñón MT, Ulloa RM, Capiati DA (2012) Characterization of StABF1, a stress-responsive bZIP transcription factor from *Solanum tuberosum* L. that is phosphorylated by StCDPK2 in vitro. *Planta* 235:761-778.
- Samuels J (2012) Genetically engineered *Bt* Brinjal and the implications for plant biodiversity-revisited. Novel Solanaceae crops project, UK. <http://indiaenvironmentalportal.org.in/files/file/GE-Bt-brinjal-revisited.pdf>
- Samuels J (2012) *Solanum incanum* s.l. (Solanaceae): taxonomic relationships between *S. incanum*, *S. campylacanthum*, *S. panduriforme* and *S. lichtensteinii*. *Kew Bulletin* 67:401-411.
- Seymour GB, Chapman NH, Chew B, Rose JKC (2012) Regulation of ripening and opportunities for control in tomato and other fruits. *Plant Biotechnology J* doi: 10.1111/j.1467-7652.2012.00738.
- Städler T, Florez-Rueda AM, Paris M (2012) Testing for "snowballing" hybrid incompatibilities in *Solanum*: impact of ancestral polymorphism and divergence estimates. *Mol Biol Evol* 29: 31-34.
- Suttle JC, Abrams SR, De Stefano-Beltrán L, Huckle LL (2012) Chemical inhibition of potato ABA-8'-hydroxylase activity alters *in vitro* and *in vivo* ABA metabolism and endogenous ABA levels but does not affect potato microtuber dormancy duration. *J Exp Bot* 63:5717-5725.
- Ties P, Barringer S (2012) Influence of lipid content and lipoxygenase on flavor volatiles in the tomato peel and flesh. *J Food Sci* 77:830-837.
- Wu Q, Lin J, Liu JZ, Wang X, Lim W, Oh M, Park J, Rajashekar CB, Whitham SA, Cheng NH, Hirschi KD, Park S (2012) Ectopic expression of Arabidopsis glutaredoxin *AtGRXS17* enhances thermotolerance in tomato. *Plant Biotechnology J* 10:913-928.
- Xu F, Yuan S, Zhang DW, Lv X, Lin HH (2012) The role of alternative oxidase in tomato fruit ripening and its regulatory interaction with ethylene. *J Exp Bot* 63:5705-5716.

## Conferences and Workshops

### **21<sup>st</sup> International Pepper Conference**

November 4 - 6, 2012  
Naples, Florida, USA  
<http://www.conference.ifas.ufl.edu/pepper2012/>

### **ASIC 2012**

#### **24<sup>th</sup> International Conference on Coffee Science**

November 11 - 16, 2012  
San José, Costa Rica  
<http://www.asic2012costarica.org/>

### **Tomato Breeder's Roundtable**

February 6 - 8, 2013  
Chiang Mai, Thailand  
<http://www.tbirt2013.com/>

### **2013 97th Annual Meeting**

#### **"100th Anniversary of the Potato Association of America"**

July 28 - August 1, 2013  
Quebec City, Quebec, Canada  
<http://www.paa2013.com/>

### **EUCARPIA: Capsicum and Eggplant Working Group Meeting**

September 2 - 4, 2013  
University of Turin, Turin, Italy  
[http://e20.unito.it/XVth\\_EUCARPIA/](http://e20.unito.it/XVth_EUCARPIA/)

## **Plant Breeding Academies**

### **Plant Breeding Academy at University of California, Davis**

February 4 - 9, 2013  
June 3 - 8, 2013  
[http://pba.ucdavis.edu/Programs/PBA\\_in\\_Davis\\_Class\\_IV/](http://pba.ucdavis.edu/Programs/PBA_in_Davis_Class_IV/)

### Plant Breeding Academy in Europe

The schedule for October 2012 to June 2013 is available at  
[http://pba.ucdavis.edu/PBA\\_in\\_Europe/PBA\\_in\\_Europe\\_Class\\_II/](http://pba.ucdavis.edu/PBA_in_Europe/PBA_in_Europe_Class_II/)

### The Asian Plant Breeding Academy

November 26 - December 1, 2012  
 April 1 – 6, 2013  
 July 22 – 27, 2013  
 Chiang Mai, Thailand  
[http://pba.ucdavis.edu/PBA\\_in\\_Asia/Asian\\_Plant\\_Breeding\\_Academy\\_Class\\_I/](http://pba.ucdavis.edu/PBA_in_Asia/Asian_Plant_Breeding_Academy_Class_I/)

### Plant Breeding Academy in Africa

For information, visit  
[http://pba.ucdavis.edu/PBA\\_in\\_Africa/](http://pba.ucdavis.edu/PBA_in_Africa/)

## *Solanaceae Recipes*

### Beer and Coffee Chili

<http://allrecipes.com/recipe/chili-i-2/>

Coffee, chocolate, and beer give this thick and spicy chili a unique and dynamite flavor. Garnish with shredded cheese and diced chile peppers. 8 servings about 1 cup each; prep time: 20 minutes; cooking time: 2 hours; total time: 2 hours 20 minutes.

#### Ingredients

2 T vegetable oil  
 2 onions, chopped  
 3 garlic cloves, minced  
 1 pound ground beef  
 3/4 pound beef sirloin, cubed  
 4 fresh hot chili peppers, seeded and chopped  
 1 (12 fluid ounce) can or bottle dark beer  
 1 cup strong brewed coffee  
 1 T unsweetened cocoa powder  
 1 (14.5 ounce) can peeled and diced tomatoes with juice  
 2 (6 ounce) cans tomato paste  
 1 (14 ounce) can beef broth  
 1/2 cup packed brown sugar  
 3 1/2 T chili powder  
 1 T cumin seeds  
 1 tsp dried oregano  
 1 tsp ground cayenne pepper  
 1 tsp ground coriander  
 1 tsp salt  
 4 (15 ounce) cans kidney beans



**Note:** This chili is better the next day when flavors have fully developed and deepened.

#### Directions

- Heat oil in a large saucepan over medium heat. Cook onions, garlic, ground beef and cubed sirloin in oil for 10 minutes, or until the meat is well browned and the onions are tender.
- Mix in the diced tomatoes with juice, dark beer, coffee, tomato paste and beef broth. Season with brown sugar, chili powder, cumin cocoa powder, oregano, cayenne pepper, coriander and salt. Stir in 2 cans of the beans and hot chili peppers. Reduce heat to low, and simmer for 1 1/2 hours.
- Stir in the 2 remaining cans of beans, and simmer for another 30 minutes.

**Nutrition, per serving:** 532 calories; 16.1 g fat; 57 mg cholesterol; 65.3 g carbohydrates; 32.4 g protein; 17.6 g fiber; 1414 mg sodium.



## Red Pepper Eggplant Chili

<http://www.meatlessmonday.com/red-pepper-eggplant-chili/>

This is a spicy, meatless chili made with eggplant, red peppers, and cannellini beans. Garnish with sour cream and sliced black olives if desired. Serve with cornbread for a great combination. See recipe below.

### Ingredients

- 1 medium onion, coarsely chopped
- 2 large red bell peppers, seeded and chopped
- 2 large eggplants, peeled and cubed
- 1 16 oz can low-salt stewed tomatoes, undrained
- 1 4.25 oz can chopped black olives, drained
- 1 8 oz can low-salt tomato sauce
- 2 T red chili powder
- Red pepper flakes, to taste
- 2 T dark molasses
- 1 tsp salt
- ½ tsp garlic powder
- 2 19 oz cans cannellini beans (white kidney beans), undrained
- Garnish: Sour cream and sliced black olives, if desired



### Directions

- In a Dutch oven, sauté onions, red peppers, and eggplants over medium-high heat, stirring constantly, until tender, about 4-5 minutes.
- Add remaining ingredients except cannellini beans. Mix well. Cover, reduce heat to low, and simmer 1 hour, stirring occasionally.
- After 1 hour, stir in cannellini beans. Cover and continue cooking 30 minutes, stirring occasionally.
- Serve hot with a dollop of sour cream and garnish with sliced olives sprinkled on top, if desired.

**Nutrition, per serving:** 319 calories; 4 g fat (0 g sat.); 0 mg cholesterol; 65 g carbohydrates; 13 g protein; 16 g fiber; 1972 mg sodium.

## Texas-Style Skillet Cornbread

<http://homesicktexan.blogspot.com/2007/01/iron-pan-perfect-cornbread.html>

Here's a classic Texan cornbread recipe, baked in a cast iron skillet, of course. Be sure and get the cast iron good and hot, as that's what sears the batter and makes for a crispy, crunchy crust. Add peppers for a spicy nod to Mexico. Pairs great with chili.

### Ingredients

- 2 cups cornmeal (yellow or white)
- ½ cup sifted flour
- 1 tsp baking powder
- 1 tsp salt
- 1 egg, lightly beaten
- 2 cups buttermilk
- 2 T bacon drippings, shortening, lard, or vegetable oil

#### Optional (add one or both):

- 2 jalapeno peppers, seeded, and chopped or sliced (or to taste)
- ½ - 1 cup red bell pepper, roasted, seeded, and diced.
- Other options: ½ cup chopped onion or ½ cup frozen corn, thawed.



### Directions

- Preheat oven to 450°F.
- Put the drippings or oil in a large (10-inch) cast-iron skillet and place it in the oven for a few minutes until it's sizzling.
- Mix together the dry ingredients (add optional ingredients with dry mix if desired). Set aside.
- Whisk egg and buttermilk. Mix with dry ingredients.
- Take cast iron skillet out of the oven; pour hot oil into batter, and mix. Pour batter into cast iron skillet and bake in oven for 20 minutes. Cornbread should be golden-brown on top and pulling away from the sides of the skillet when done. Serves 12.