



Variations in Cn2 measured by LAS scintillometry over the city of Nantes during the FluxSAP 2010 measurement campaign

Mark Rankin M. R. Irvine, Jean-Pierre Lagouarde, Sylvia Dayau, Aurore Brut, Pierre-Adrien Solignac, Jean-Louis Selves, Jean-Martial Cohard, Georges Najjar, Céline Quentin, Fabrice Rodriguez, et al.

► To cite this version:

Mark Rankin M. R. Irvine, Jean-Pierre Lagouarde, Sylvia Dayau, Aurore Brut, Pierre-Adrien Solignac, et al.. Variations in Cn2 measured by LAS scintillometry over the city of Nantes during the FluxSAP 2010 measurement campaign. 3rd Scintillometer Workshop, Apr 2011, Wageningen, Netherlands. 2011. hal-02806505

HAL Id: hal-02806505

<https://hal.inrae.fr/hal-02806505>

Submitted on 6 Jun 2020

HAL is a multi-disciplinary open access archive for the deposit and dissemination of scientific research documents, whether they are published or not. The documents may come from teaching and research institutions in France or abroad, or from public or private research centers.

L'archive ouverte pluridisciplinaire **HAL**, est destinée au dépôt et à la diffusion de documents scientifiques de niveau recherche, publiés ou non, émanant des établissements d'enseignement et de recherche français ou étrangers, des laboratoires publics ou privés.

Variations in Cn2 measured by LAS scintillometry over the city of Nantes during the FluxSAP 2010 measurement campaign.

Irvine¹ M.R., Lagouarde¹ J.-P., Dayau¹ S., Brut² A., Solignac² P.A., Selves² J.-L., Cohard³ J.M., Najjar⁴ G., Quentin⁴ C., Rodriguez^{5,6} F., Mestayer⁵ P.
¹ INRA, UR1263 EPHYSE, F-33140 Villenave d'Ornon ² CESBIO, UMR5126, F-31401 Toulouse ³ LTHE, UMR5564, F-38400 Saint-Martin-d'Hères
⁴ LSIT, UMR7005, F-67412 Illkirch ⁵ IRSITV, FR CNRS 2488, F-443216 IFSTTAR, GER, F-44341

Introduction In the framework of a large French research program investigating sustainable development of cities (ANR 'Villes Durables'), one project, VegDUB, proposed the exploration of the role of the vegetation in the urban environment. Within this project an intensive experimental campaign, known as FluxSAP, was planned, involving remote sensing and surface flux measurements (further details can be found on <http://www.irstv.fr/>). The aim of FluxSAP is to improve our characterisation of fluxes over a city, with Nantes in the north-west of France chosen as model.

Experimental setup The measurement stage of the FluxSAP 'volet' was undertaken during the month of May 2010. As part of the set-up 5 Large Aperture Scintillometers (LAS) were installed over a peri-urban part of the city in firstly, a triangular formation (3 LAS) with path-lengths between 1.3 and 2.4 kms, secondly a LAS crossing through the triangular formation (pathlength 3.5 kms) and thirdly a fifth LAS was used to double up one of the paths on the triangular formation to be sure of the repeatability of the reflective index structure parameter (C_n^2) measurement by the LAS (see table 1 & Figure 2). Over 3 weeks of common data are available from the LAS to study the C_n^2 and sensible heat flux (H) variability.



Figure 1 Scintillometers during FluxSAP

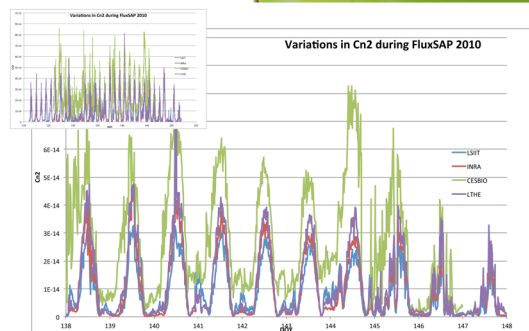


Figure 4 Cn2 for the different scintillometer paths

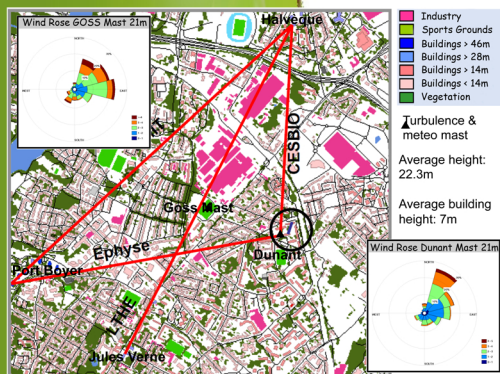


Figure 2 Building distribution in the city of Nantes

Path	Distance (m)
Dunant - Port Boyer*	1770
Port Boyer - Halvègue	2470
Dunant - Halvègue	1310
Halvègue - Jules Verne	2490

* 2 enclosures

Table 1 Scintillometer paths

Method Cn2 is directly measured by the LAS via the received amplitude fluctuations from the infrared source (σ_{ir}). Temperature structure parameter (C_T) can be determined from Cn2 using a few meteorological variables and thereafter sensible heat flux (H) by exploiting similarity theory (Figure 3).

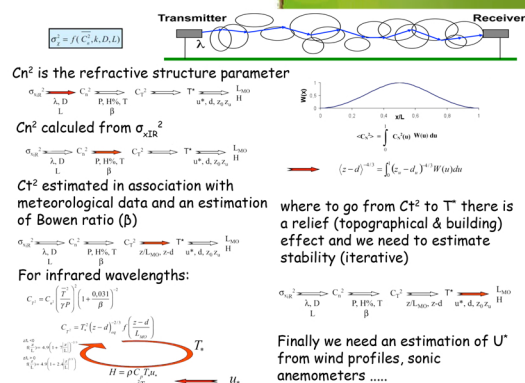


Figure 3 Scintillometry flux estimation

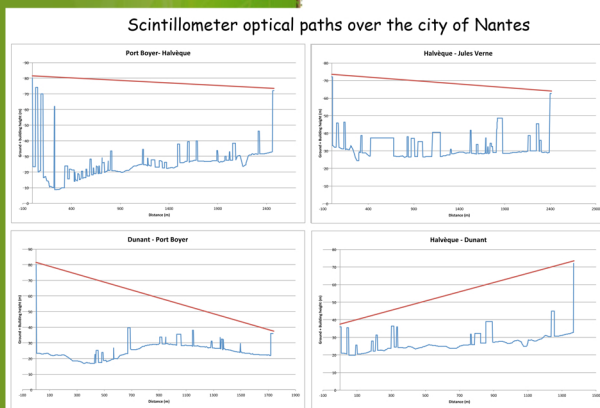


Figure 5 Relief profiles

Results (cont) It can be seen that despite this initial attempt to estimate the relief there is a large variation of the flux between the different paths. This variation for example of the CESBIO scintillometer indicates lower fluxes on days 138-140 and higher fluxes on days 144-146 compared to the LTHE scintillometer. Figure 7 provides wind direction information which indicates quite different directions for the 2 before mentioned examples.

Conclusion The spatial variability of Cn2 is an important question in our analyses of the scintillometry FluxSAP data as we want to be able to improve our understanding of sensible heat flux variability. Our initial results indicate a rather large variability in a rather small area (~ 5 km²), despite a first attempt to eliminate relief effects. Observations suggest an influence from wind direction, which probably indicates a 'footprint' factor. This 'factor' may have a triple impact: 1 the relief influence is directional, 2 given the building distribution (Figure 2) there is indeed flux variability and 3 the vegetation distribution may have an influence on the fluxes. To conclude a 'footprint'/relief study has to be done in order to determine the true flux variability.

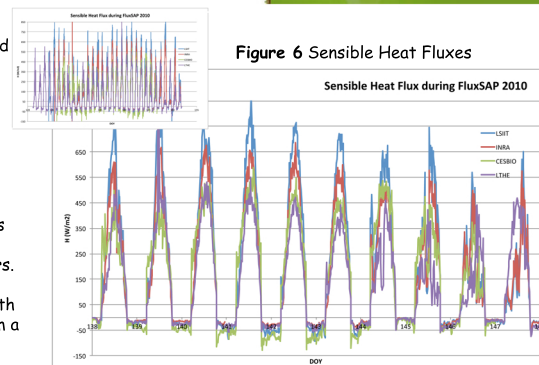


Figure 6 Sensible Heat Fluxes

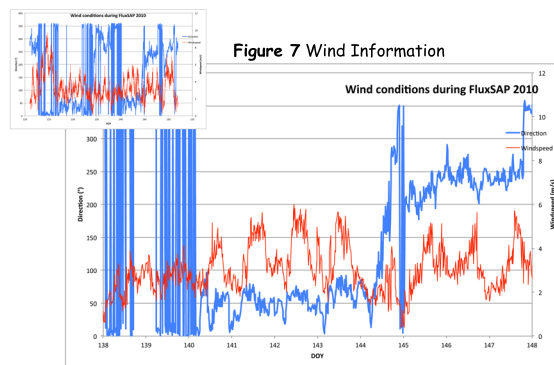


Figure 7 Wind Information