

## Building high-density peach linkage maps based on the ISPC 9K SNP chip for mapping mendelian traits and QTLs: benefits and drawbacks

Jehan-Baptiste Mauroux, Bénédicte Quilot-Turion, Thierry Pascal, Elisabeth Dirlewanger, José Antonio Campoy-Corbalan, M. Troglio, I. Verde, D. Micheletti, M.J. Aranzana, Patrick Lambert

### ► To cite this version:

Jehan-Baptiste Mauroux, Bénédicte Quilot-Turion, Thierry Pascal, Elisabeth Dirlewanger, José Antonio Campoy-Corbalan, et al.. Building high-density peach linkage maps based on the ISPC 9K SNP chip for mapping mendelian traits and QTLs: benefits and drawbacks. 8. ISHS International Peach Symposium, Jun 2013, Matera, Italy. 1 p., 2013. hal-02808695

HAL Id: hal-02808695

<https://hal.inrae.fr/hal-02808695>

Submitted on 6 Jun 2020

**HAL** is a multi-disciplinary open access archive for the deposit and dissemination of scientific research documents, whether they are published or not. The documents may come from teaching and research institutions in France or abroad, or from public or private research centers.

L'archive ouverte pluridisciplinaire **HAL**, est destinée au dépôt et à la diffusion de documents scientifiques de niveau recherche, publiés ou non, émanant des établissements d'enseignement et de recherche français ou étrangers, des laboratoires publics ou privés.



# Building High-Density peach linkage maps based on the ISPC 9K SNP chip for mapping mendelian traits and QTLs: benefits and drawbacks

Mauroux J.B.<sup>1</sup>, Quilot-Turion B.<sup>1</sup>, Pascal T.<sup>1</sup>, Dirlewanger E.<sup>2</sup>, Campoy J.A.<sup>2</sup>, Troggio M.<sup>3</sup>, Verde I.<sup>4</sup>, Micheletti D.<sup>5</sup>, Aranzana M.J.<sup>5</sup> and Lambert P.<sup>1</sup>

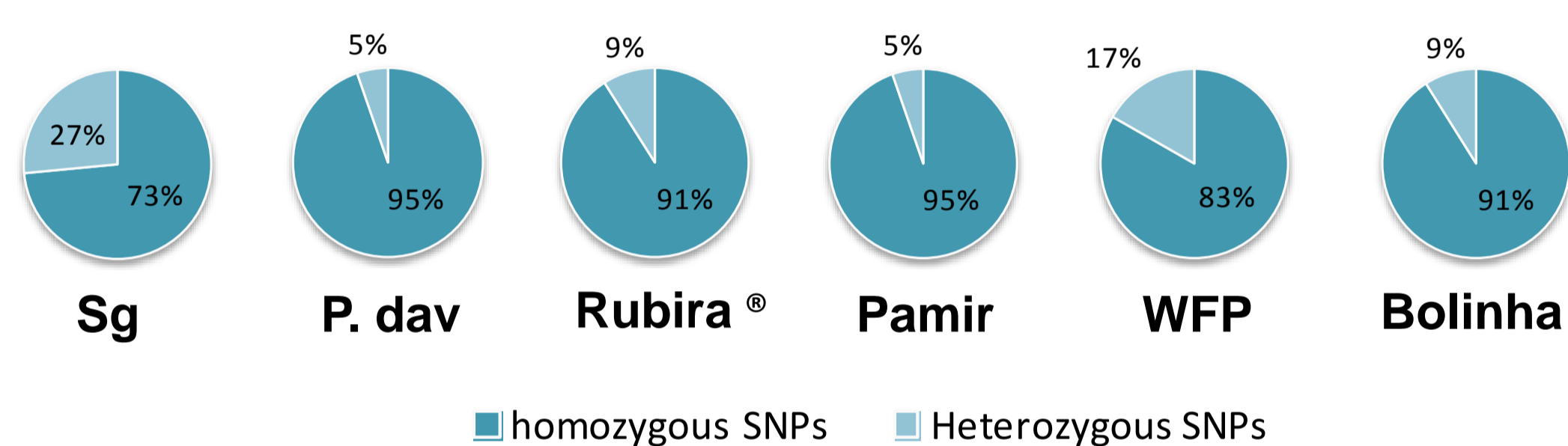
<sup>1</sup>UR1052 GAFL, Genetics and Breeding for Fruits and Vegetables, Domaine St Maurice, CS 60094, 84140 Montfavet Cedex, France; <sup>2</sup>UMR1332 Biologie du Fruit et Pathologie, 71, avenue Edouard Bourlaux - CS 20032, 33882 Villenave d'Ornon Cedex - France; <sup>3</sup>IASMA Research Center, Fondazione Edmund Mach, Via E. Mach 1, 38010 San Michele a/Adige (TN) Italy; <sup>4</sup>CRA, Fruit Tree Research Center, Via Nazionale 82, 00184, Roma, Italy; <sup>5</sup>IRTA Consorci CSIC-IRTA-UAB, Campus UAB, Edifici CRAG, Bellaterra (Cerdanyola del Vallés), 08193 Barcelona, Spain

## Context

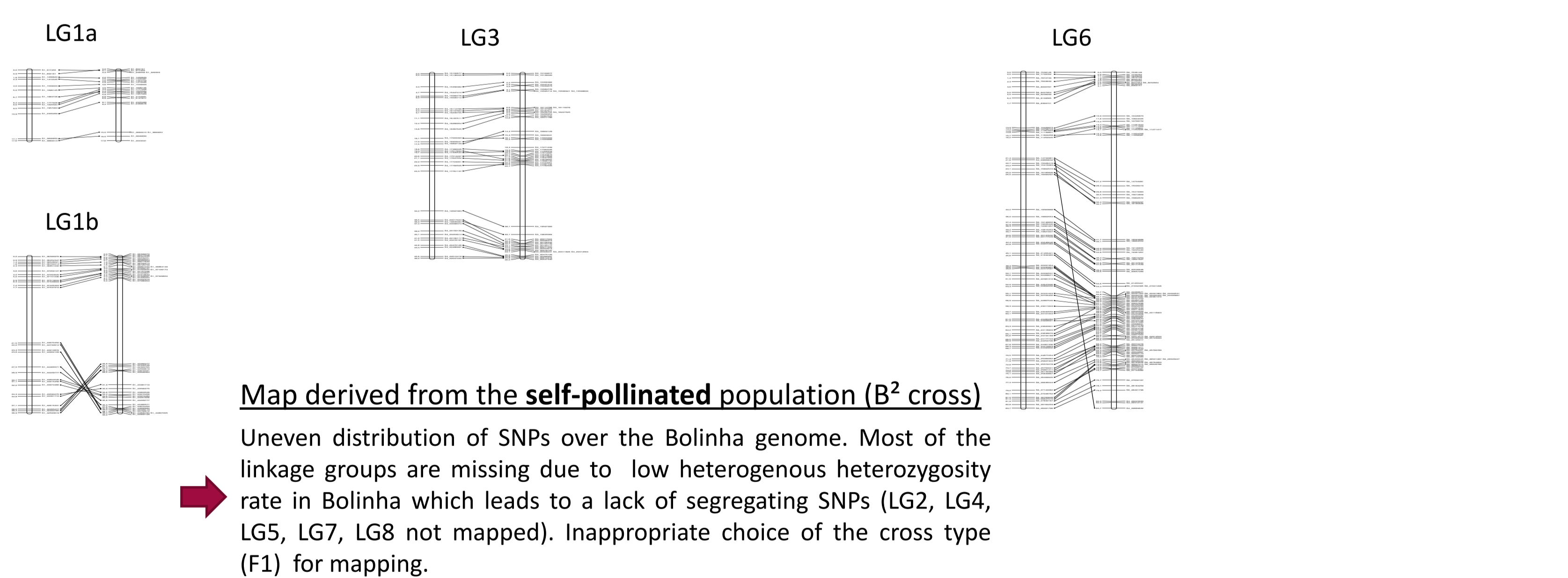
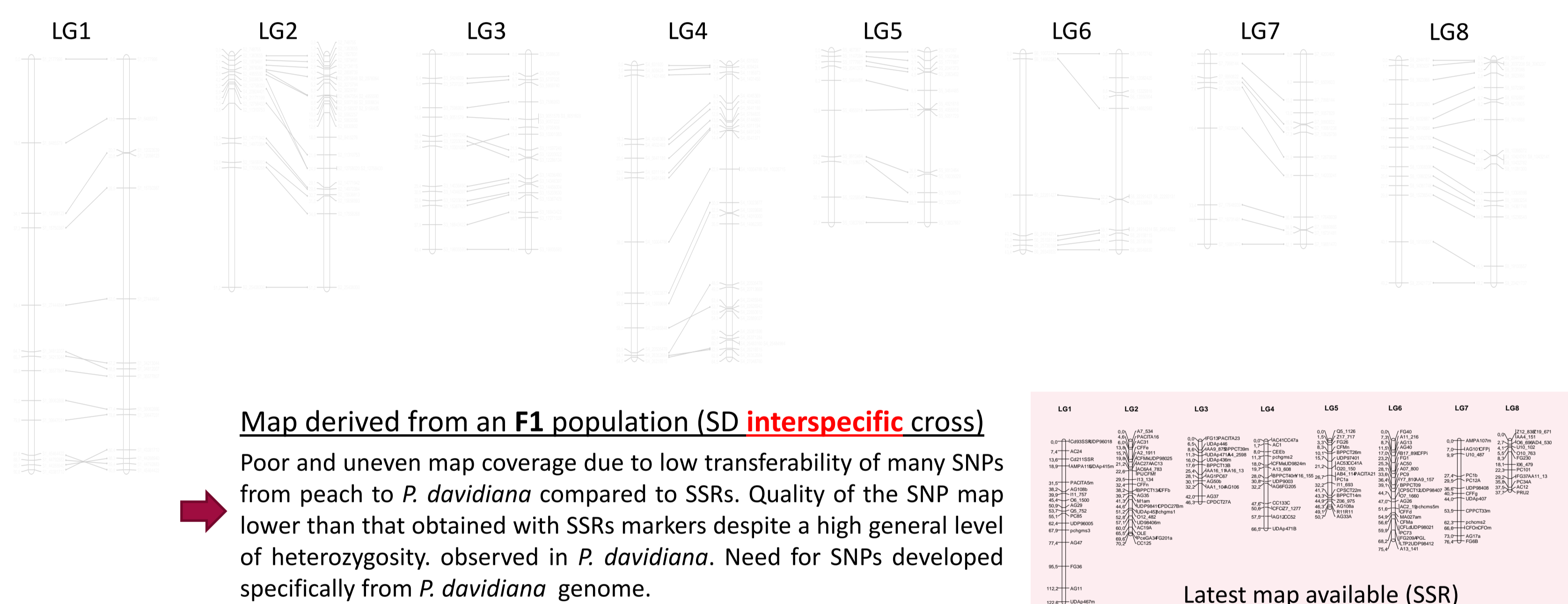
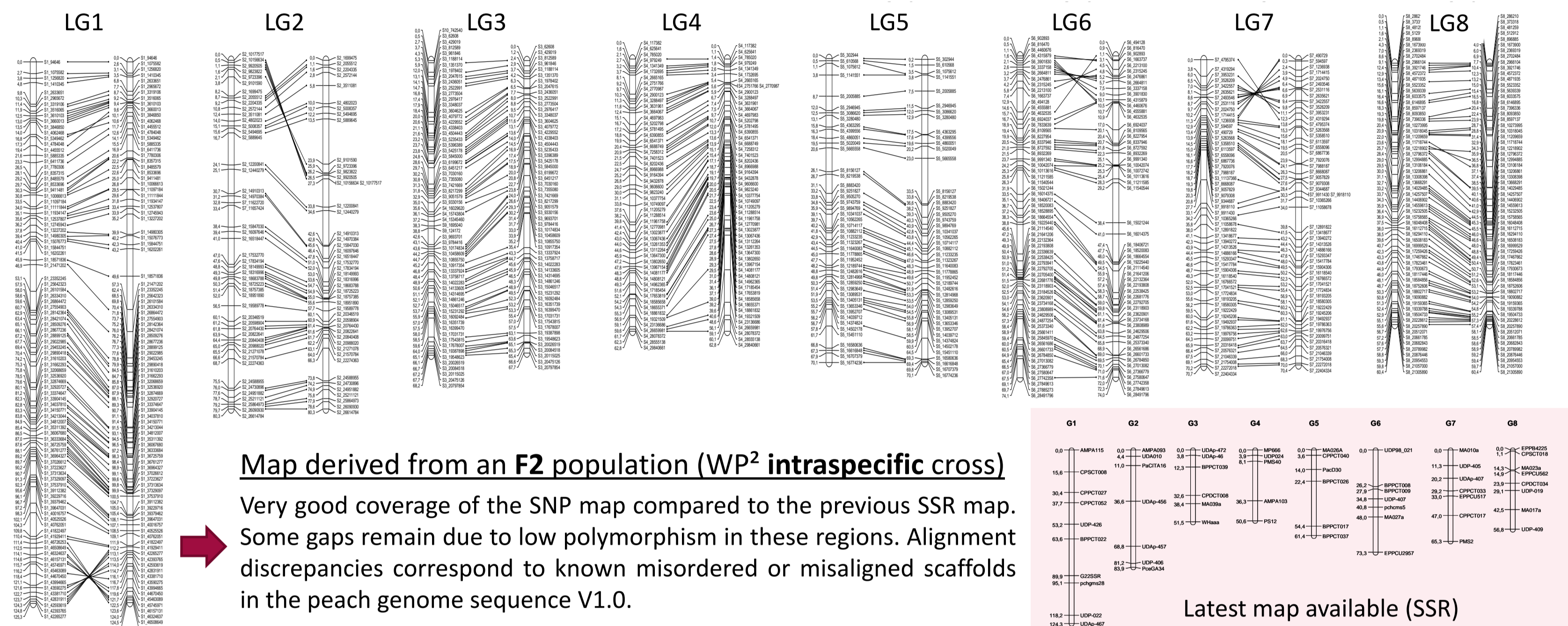
"FruitBreedomics" European project has been designed by an international consortium including scientists, stakeholders and breeding companies. One of its aims is to increase the efficiency of breeding programs in apple and peach by developing Marker Assisted Breeding (MAB) using novel genomic tools. In the frame of this project, six peach mapping populations (two intraspecific F2, two interspecific F1 derived from *P. davidiana*, one self-pollinated derived from Bolinha and one advanced pseudo-backcross) segregating for mendelian traits and/or Quantitative Trait Loci (QTLs) for pest resistance and fruit quality were genotyped using an Infinium II Illumina bead-chip containing 8144 SNPs derived from the sequencing of the peach genome. Mapping results were contrasted depending on the population considered. Relevancy of using general medium-range SNP bead-chips for breeding purposes is discussed in this study.

Parents	Pop. ID	Pop. type	Pop. size	Useful SNPs	Cross type
Pamir x Rubira®	PR <sup>2</sup>	F2	98	AAxBB	intraspecific
Weeping Flower Peach x Pamir	WP <sup>2</sup>	F2	95	AAxBB	intraspecific
Rubira® x <i>P. davidiana</i>	RD	F'1	68	AAxAB	interspecific
Summergrand x <i>P. davidiana</i>	SD	F'1	97	AAxAB	interspecific
Bolinha x Bolinha	B <sup>2</sup>	self	112	ABxAB	-

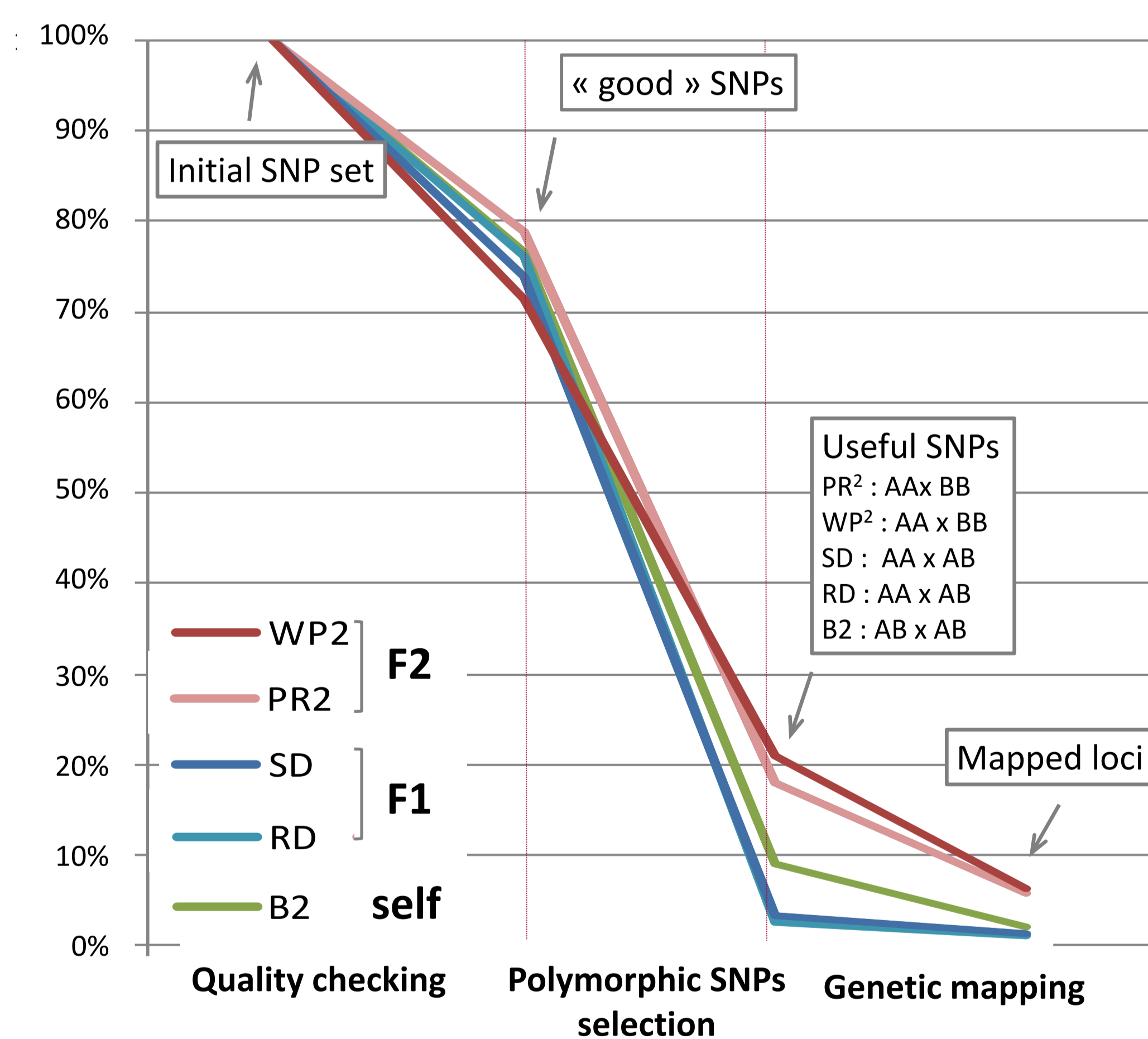
## Percentage of homo/heterozygous SNPs of parents



## Mapping results



## SNPs losses at different stages of the mapping process



## Conclusion

For each cross, the number of mapped SNPs is clearly below the number of SNPs initially present on the chip. This loss was caused by the filtering steps necessary to the selection of appropriate and reliable markers for genetic mapping. Approximately 20 to 30% poor quality (non-functional or aberrant) and 56 to 70% non-appropriate polymorphic SNPs were removed leading to **variable proportions of useful markers depending of the cross type**: on the one hand the SNP linkage maps derived from F2 populations display higher densities than the previous SSRs maps with an average distance of 1,5 and 1,3 cM respectively for PR<sup>2</sup> and WP<sup>2</sup> crosses. They perfectly align with the peach genome sequence v1.0 (IPGI). On the other hand, very few SNPs (<3%) turned out to be useful to map *P. davidiana* polymorphism. Linkage maps derived from F1 **interspecific crosses display low coverage** (almost identical to SSR map) **and heterogeneous distributions** with an average distance of 4,3 and 5,1 cM respectively for RD and SD crosses. This is due to the low rate of heterozygosity of *P. davidiana* for the SNPs included in the 9K SNP chip and demonstrates their **poor transferability** between species, even closely related. For Bolinha, low allelic variability of the SNPs coupled to low genome heterozygosity give similar results. In consequence, a good knowledge of the degree of heterozygosity of the selected cultivar is thus of first importance prior to using F1 crosses.

## Acknowledgment

This work has been (partly) funded under the EU seventh Framework programme by the FruitBreedomics project n°265582 : Integrated Approach for increasing breeding efficiency in fruit tree crop. The views expressed in this work are the sole responsibility of the authors and do not necessary reflect the views of the European Commission. We thanks the "RosBreed : enabling marker-assisted breeding in Rosaceae" project for sharing information in the evaluation step of the array.