



HAL
open science

Study of two forested watersheds in Les Landes region: monitoring of carbon stock and water cycle over the last decades

Marie Guillot, Sylvia Dayau, Katharina Spannraft, Dominique Guyon, Jean-Pierre Wigner, Denis Loustau

► **To cite this version:**

Marie Guillot, Sylvia Dayau, Katharina Spannraft, Dominique Guyon, Jean-Pierre Wigner, et al.. Study of two forested watersheds in Les Landes region: monitoring of carbon stock and water cycle over the last decades. 2010 International Conference on Integrative Landscape Modelling, Feb 2010, Montpellier, France. 8 p., 2010. <hal-02811731>

HAL Id: hal-02811731

<https://hal.inrae.fr/hal-02811731v1>

Submitted on 6 Jun 2020

HAL is a multi-disciplinary open access archive for the deposit and dissemination of scientific research documents, whether they are published or not. The documents may come from teaching and research institutions in France or abroad, or from public or private research centers.

L'archive ouverte pluridisciplinaire **HAL**, est destinée au dépôt et à la diffusion de documents scientifiques de niveau recherche, publiés ou non, émanant des établissements d'enseignement et de recherche français ou étrangers, des laboratoires publics ou privés.



HAL Authorization

Study of two forested watersheds in Les Landes region: monitoring of carbon stock and water cycle over the last decades.

Guillot M. (1) ; Dayau S. ; Spannraft K. ; Guyon D. ; Wigneron J-P. ; Loustau D.
(1) INRA, UR1263 EPHYSE, F-33140, Villenave d'Ornon, marie.guillot@bordeaux.inra.fr

Introduction

Water availability influences strongly carbon stock as it is a determinant factor for forest distribution and a limiting factor for tree productivity.

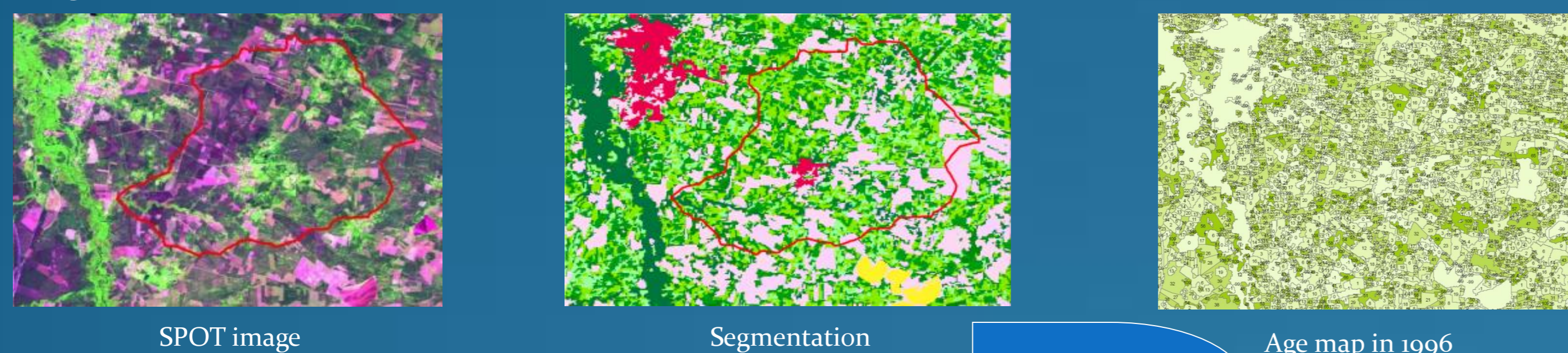
BUT

Few studies quantify feedback effects of the two cycles by a spatially explicit coupling between an hydrological and an ecological model.

Our project aims to implement a coupled eco-hydrological model to estimate effects of land cover and climatic changes, extreme climatic events, and forest management on water and carbon budgets for the last decades.

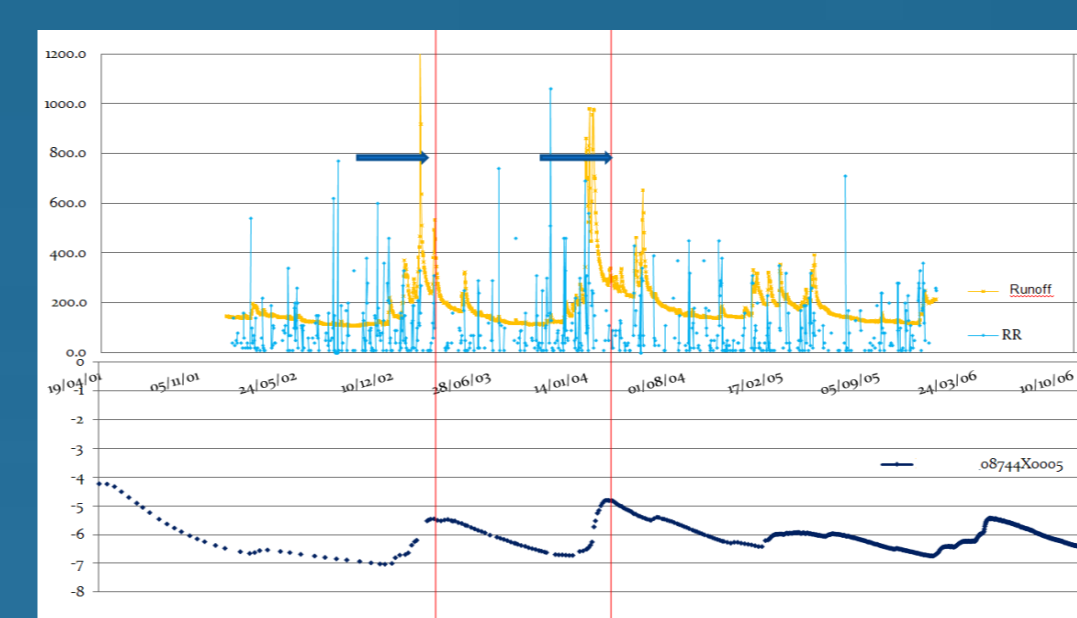
Land Cover map since 1983

- 1) Classification of 2007 multi-seasonal SPOT images : 14 classes of land cover type of witch 6 represent coarse age classes of maritime pine forest. Calibration and validation with ground survey (2000, 2008).
- 2) Refined using the date of clear-cut to know the age in 2007 (clear-cut map INRA 1984-1990 and IFN since 1990). The age of the oldest stands (before 1984) filled with statistic of the last ground-based forest inventory in the area.
- 3) Age "reconstitution" through time : remove one year to obtain the n-1 year map and when coming to the clear-cut year, statistical distribution of the age before cutting from IFN.



Climatic Data

From 1996 to 2008 : Météo France data, 8*8km, grid.
Since 2009 : weather stations on the watershed.



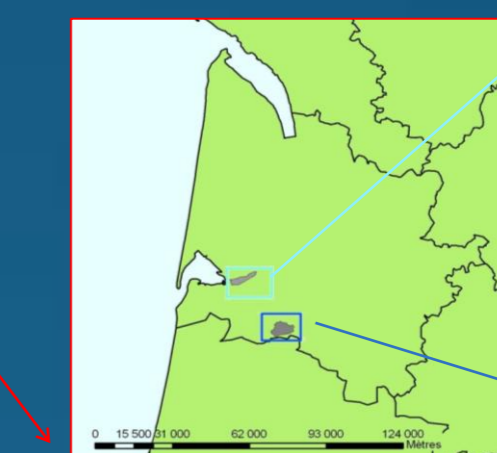
Rainfall, runoff and piezometric variation on the Bouron Watershed from May 2001 to October 2006 : correlation between a rain event and dynamic of the water.

Experimental sites

Managed maritime Pine forests of Southwestern France covers nearly 1 million of hectares.



Tagon (W01°03'02", N49°63'18") :
• Surface : 22 km²
• Altitude : 60 m-1 m a.s.l.
• Slope : 1% (max 4 %)



Bouron (W00°80'02", N49°42'31") :
• Surface : 48 km²
• Altitude : 80 m-16 m a.s.l.
• Slope : 1% (max 16 %)
• 98% Forest (86% Pine), 2% Crops, 9% urban areas (*)
• 92% Forest (87% Pine), 6% Crops, 2% urban areas (*)

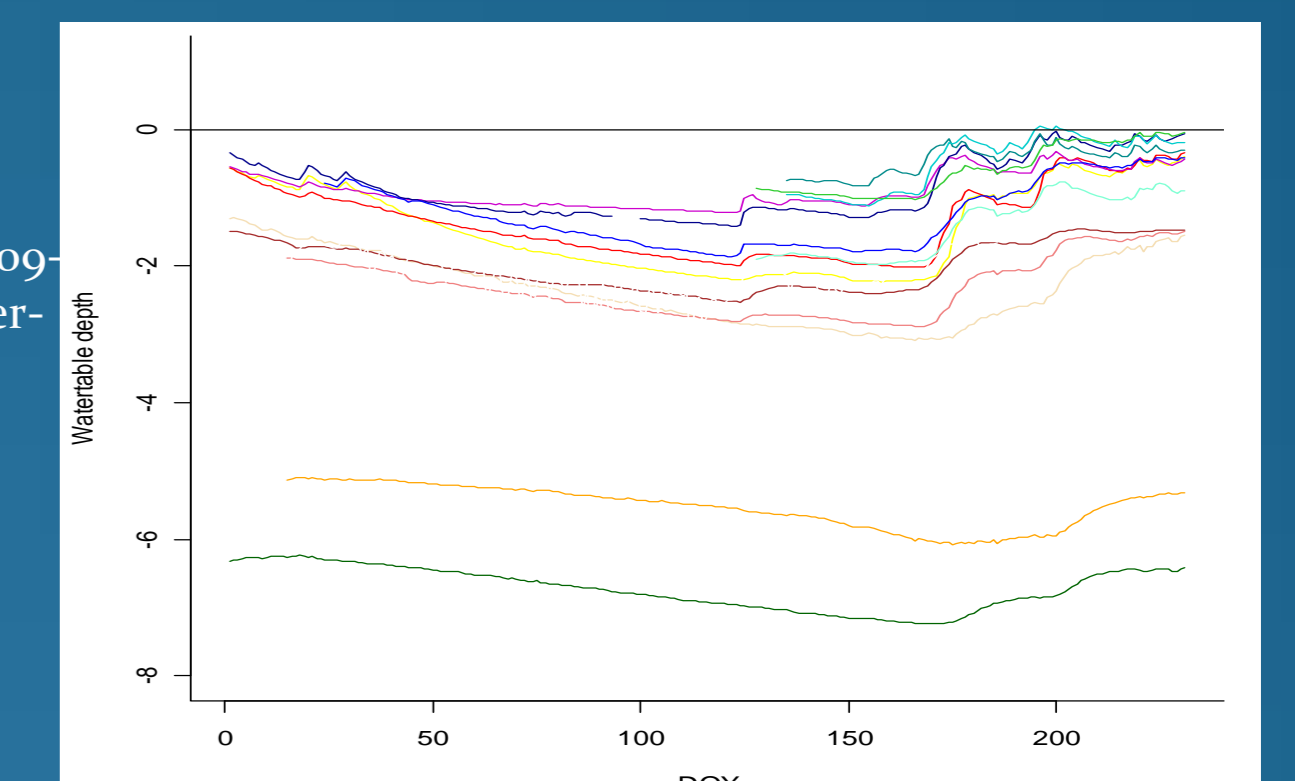
Hydrologic Data



Different type of wells: manual or automatic

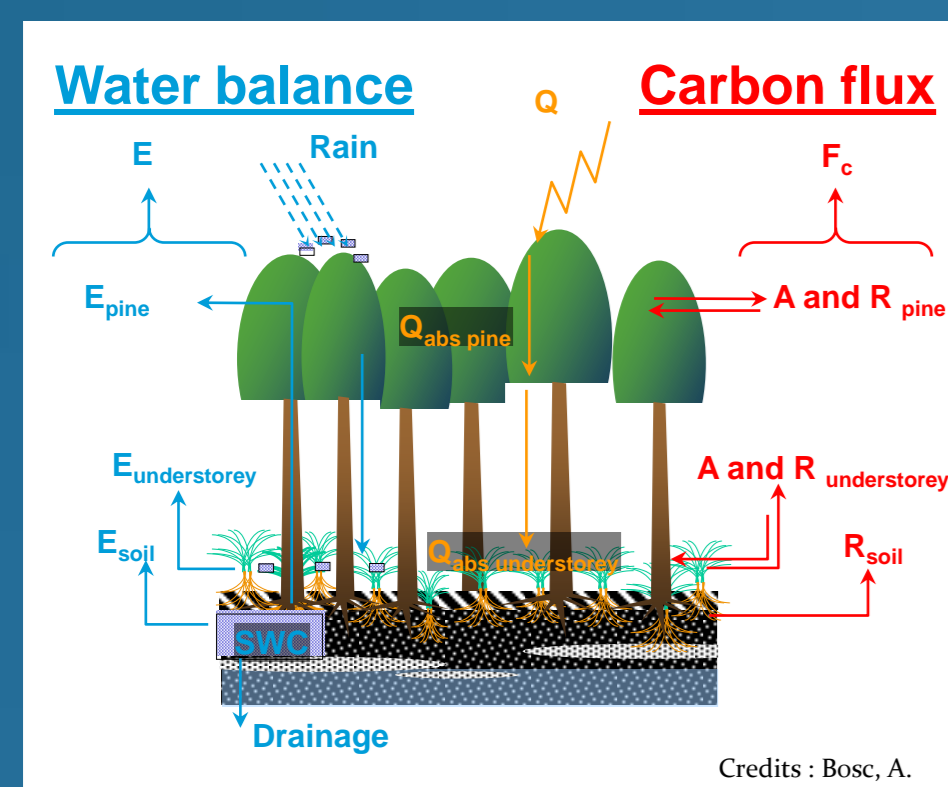
Groundwater table : 9 and 12 wells for the Bouron and Tagon watersheds, from 2 to 11 m deep; from 1976 at the earliest.

Runoff : 1 outlet for each watershed from 1967 at the earliest (Tagon's measurements were interrupted from 2006 until November 2009).



Progressive recharge of the water-table during winter 2009-2010. The deeper are the water-table, the smoother is the reaction to a rainfall event.

SVAT Model

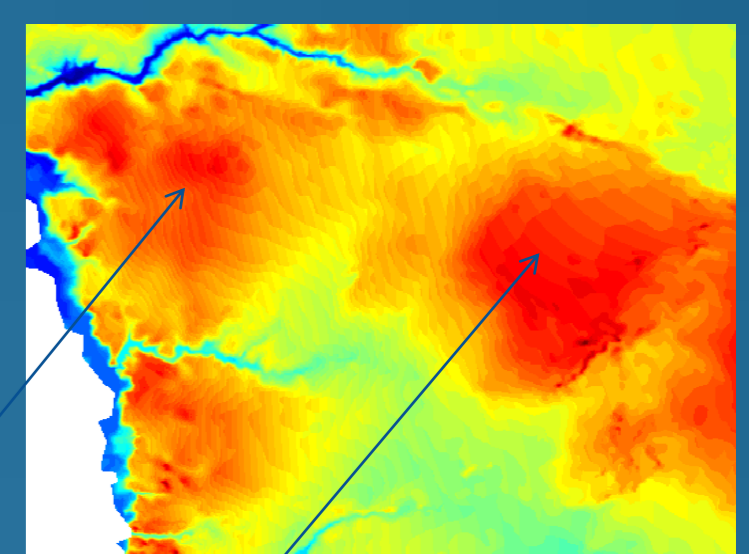


Process-based model describing forest functioning : evapotranspiration, carbon balance, tree growth, management , energy balance, etc.)
=> calculate carbon budget and its evolution over time.

Modflow

Spatially-distributed ground water level will be simulated with MODFLOW (Chiang W-H., 2005).

First simulation with the model for the Bouron watershed show a great concordance with vegetation maps from dry to humid places.



Carbon stock and Water Budget evolution trough time

1999's Storm impact on stands

Tagon have been more damaged by the Martin (Dec. 1999) winter storm and Bouron by the Klaus (Jan. 2009) winter storm.

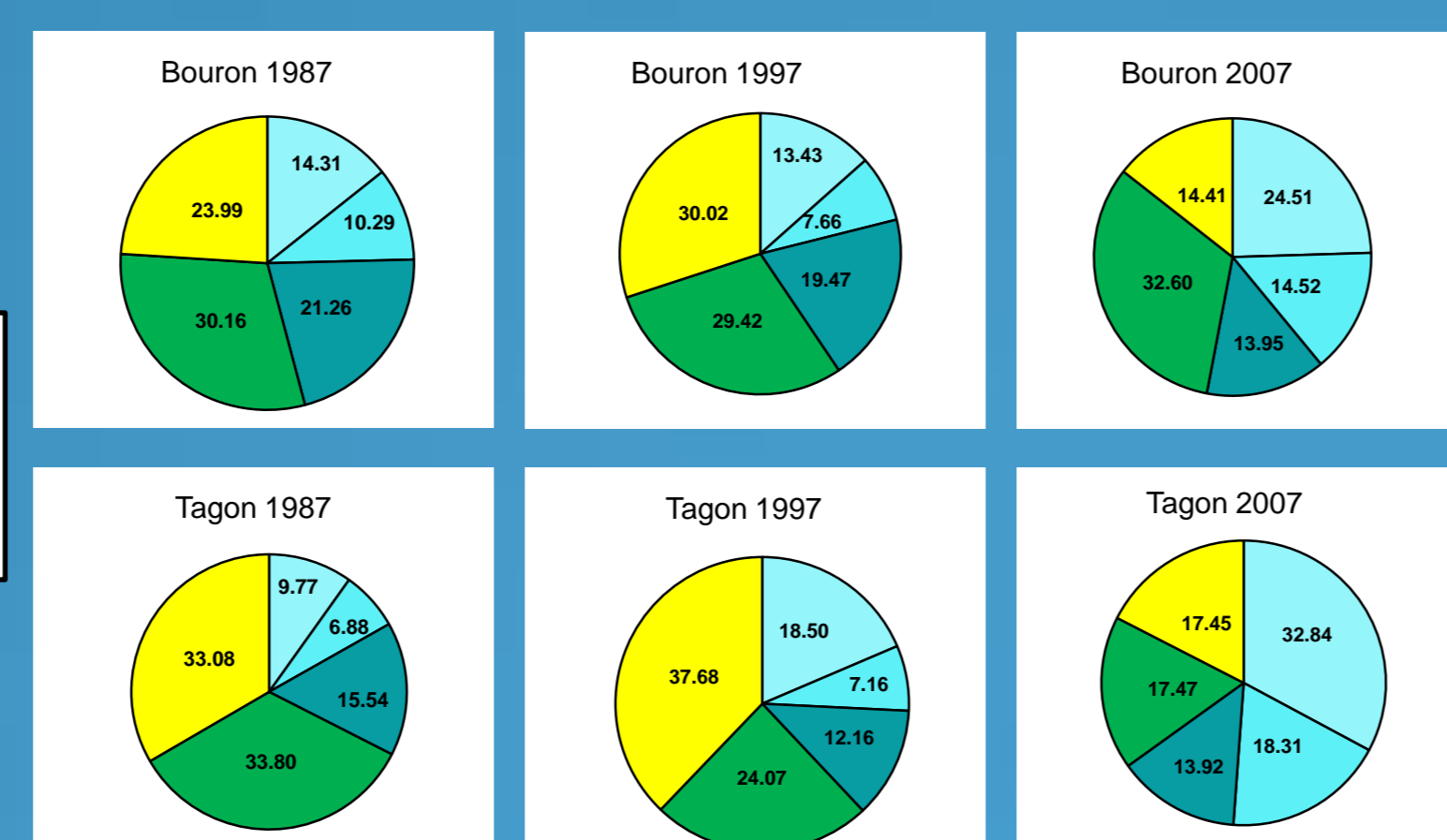
| | | Tagon | Bouron |
|---------------|-----|-------|--------|
| Martin (1999) | P20 | 32.9 | 19.8 |
| | P50 | 24.2 | 12.4 |
| Klaus (2009) | P20 | 25.6 | 33.3 |
| | P50 | 7.5 | 13.1 |

P20 : Percentage of the total surface of the watershed with damaged trees ratio higher than 20%.

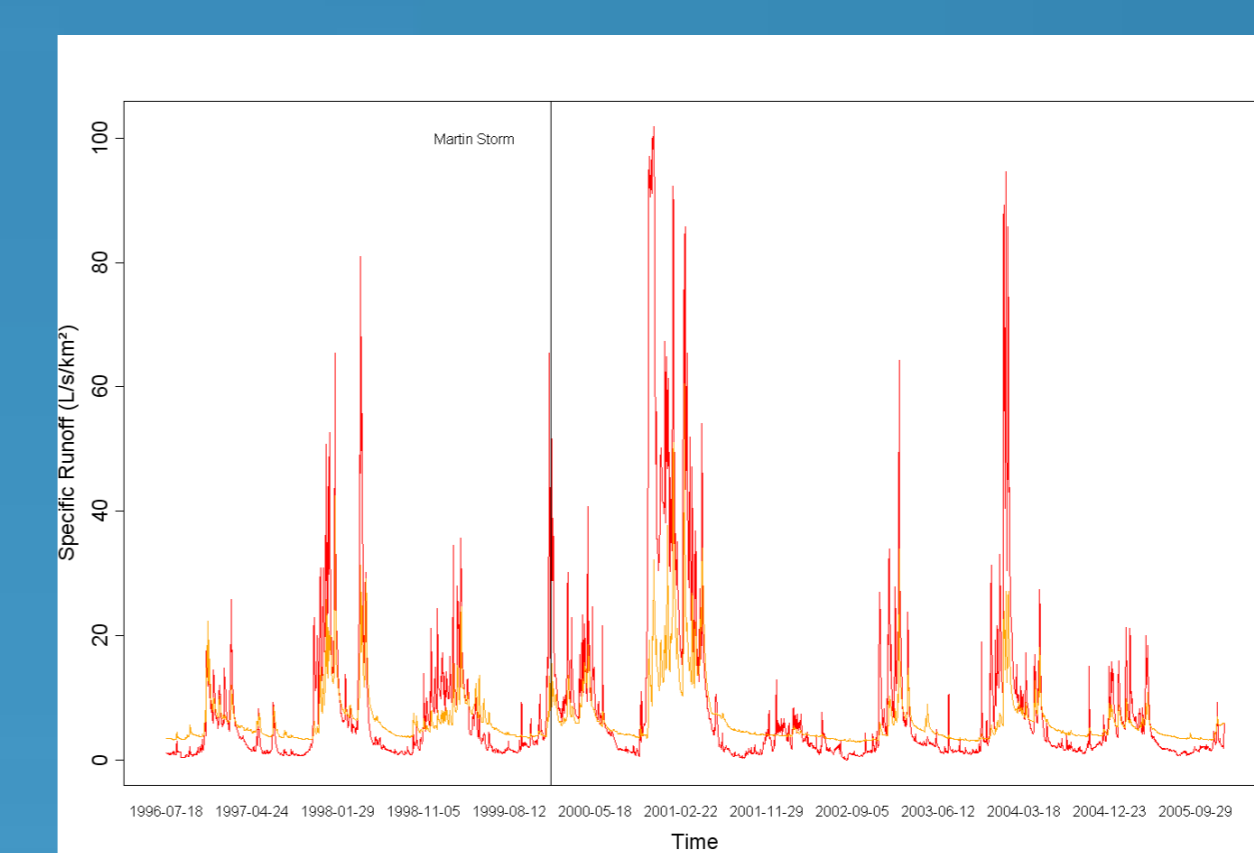
P50 : Percentage of the total surface of the watershed with damaged trees ratio higher than 50%.

The 1999's storm had a deep and long term impact on the age distribution of the pine forest stands for the two watersheds.

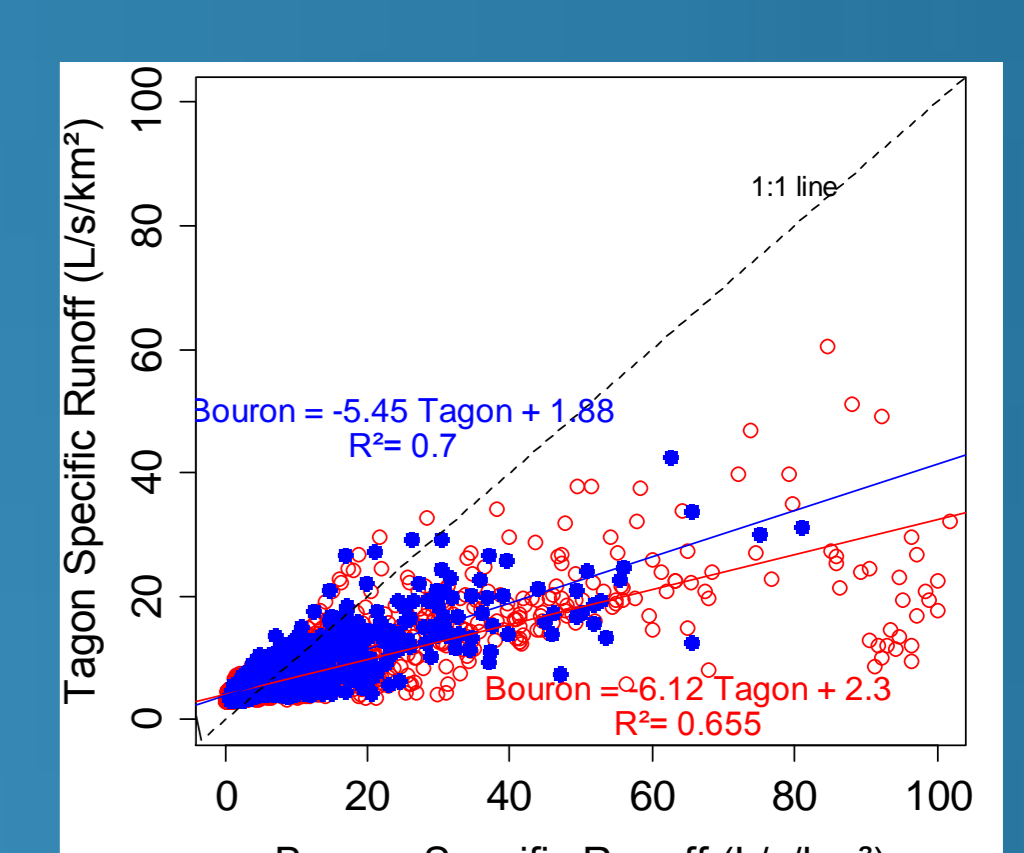
- Clear cuts or 0 to 5 years stands
- 6 to 9 years stands
- 10 to 20 years stands
- 21 to 40 years stands
- More than 40 years stands



1999's Storm impact on flows



Specific runoff from July 1996 to December 2005 : Red = Tagon, Orange = Bouron



Specific runoff before (blue) and after (red) the 'Martin' storm

Specific runoff of the Tagon watershed increases in comparison with the Bouron watershed after the 1999' storm, mainly due to an increase of flood flow during winter. These higher peak flows are still visible after four years.

This difference was highly significant with a t-value of 5.77 for 2522 ddl and p-value of 8.75e-09.

Perspectives

The next step of the study will be to implement the coupled eco-hydrological model to quantify the cumulative effects of land cover heterogeneity, temporal changes in land cover, progressive climatic shifts and abrupt events such as storm events and land use conversion, on watershed functioning over the two last decades.