



**HAL**  
open science

# Physically-based modeling of the trophoblast tissue morphogenesis

Chadha Chettaoui, Dirk Drasdo, Isabelle Hue, Juhui Wang

► **To cite this version:**

Chadha Chettaoui, Dirk Drasdo, Isabelle Hue, Juhui Wang. Physically-based modeling of the trophoblast tissue morphogenesis. 9th International Symposium, Computer Methods in Biomechanics and Engineering, Feb 2010, Valence, Spain. 1 p. hal-02816587

**HAL Id: hal-02816587**

**<https://hal.inrae.fr/hal-02816587>**

Submitted on 6 Jun 2020

**HAL** is a multi-disciplinary open access archive for the deposit and dissemination of scientific research documents, whether they are published or not. The documents may come from teaching and research institutions in France or abroad, or from public or private research centers.

L'archive ouverte pluridisciplinaire **HAL**, est destinée au dépôt et à la diffusion de documents scientifiques de niveau recherche, publiés ou non, émanant des établissements d'enseignement et de recherche français ou étrangers, des laboratoires publics ou privés.



# Physically-based modeling of the trophoblast tissue morphogenesis



Chadha Chettaoui, Dirk Drasdo, Isabelle Hue, Juhui Wang



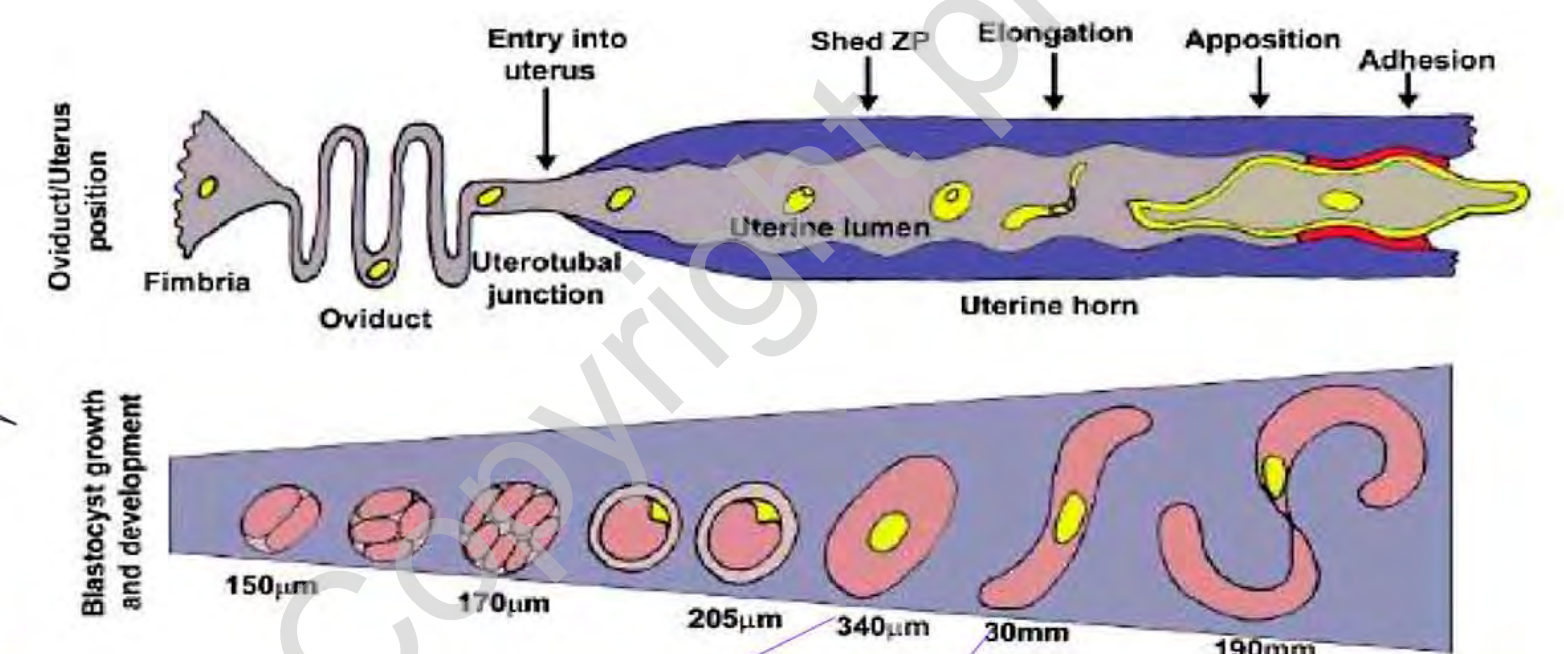
## Aim:

Our purpose is to develop a mathematical model which can explain the essential mechanisms underlying the bovine trophoblast morphogenesis and can thereby contribute to our understanding of regulation in early embryo development. We are particularly interested in how molecular events and physical constraints interact to control the transition of spherical blastula to an elongated cigar-shaped trophoblast.

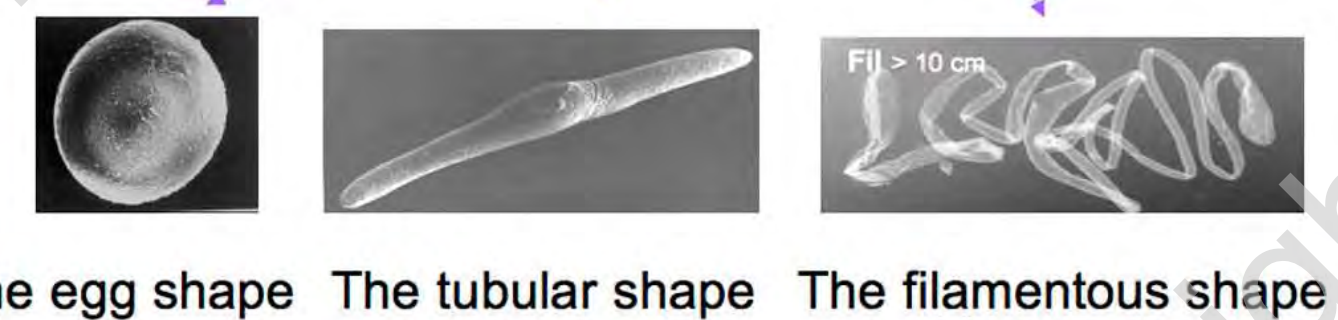
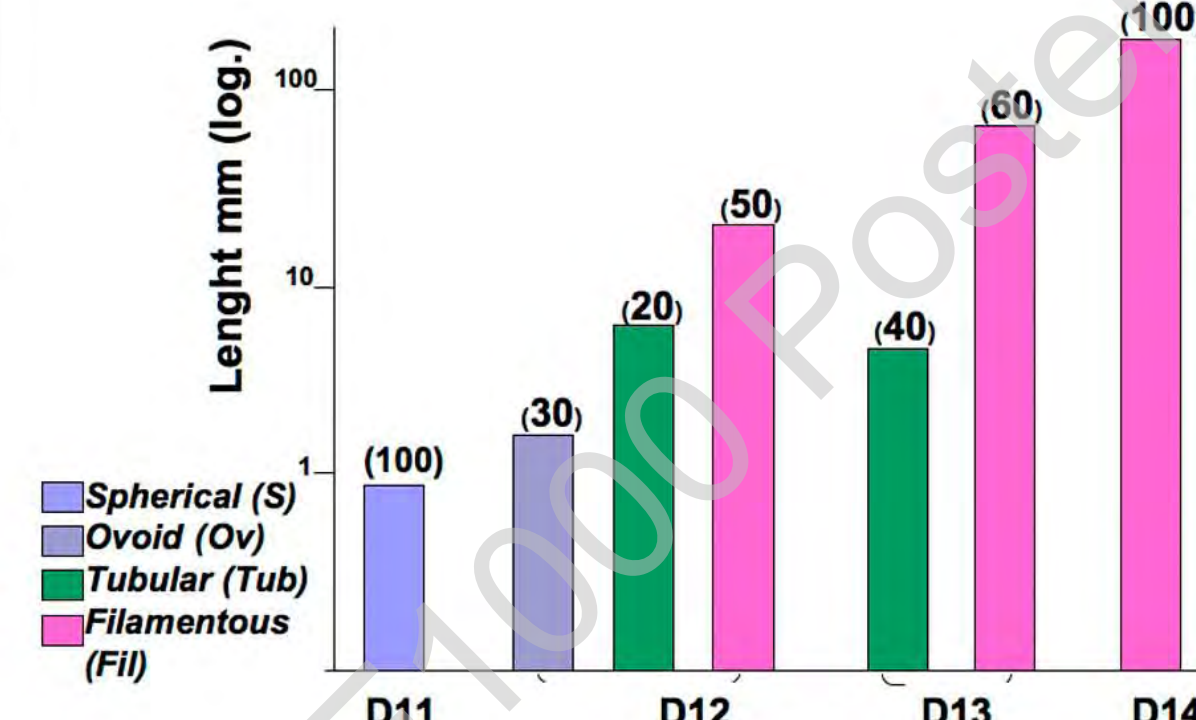
## The trophoblast

- ✓ The first epithelial tissue which appears during animal embryogenesis
- ✓ The original tissue of the placenta
- ✓ Trophic tissue: Get oxygen and nutrients for the embryo before uterus embedding
- ✓ Rapid growth: From one cell (almost 30 micrometer) to about one million of cells (almost 20 centimeters) in a period of 21 days
- ✓ Undergoes a remarkable shape change from spherical to tubular to filamentous shape

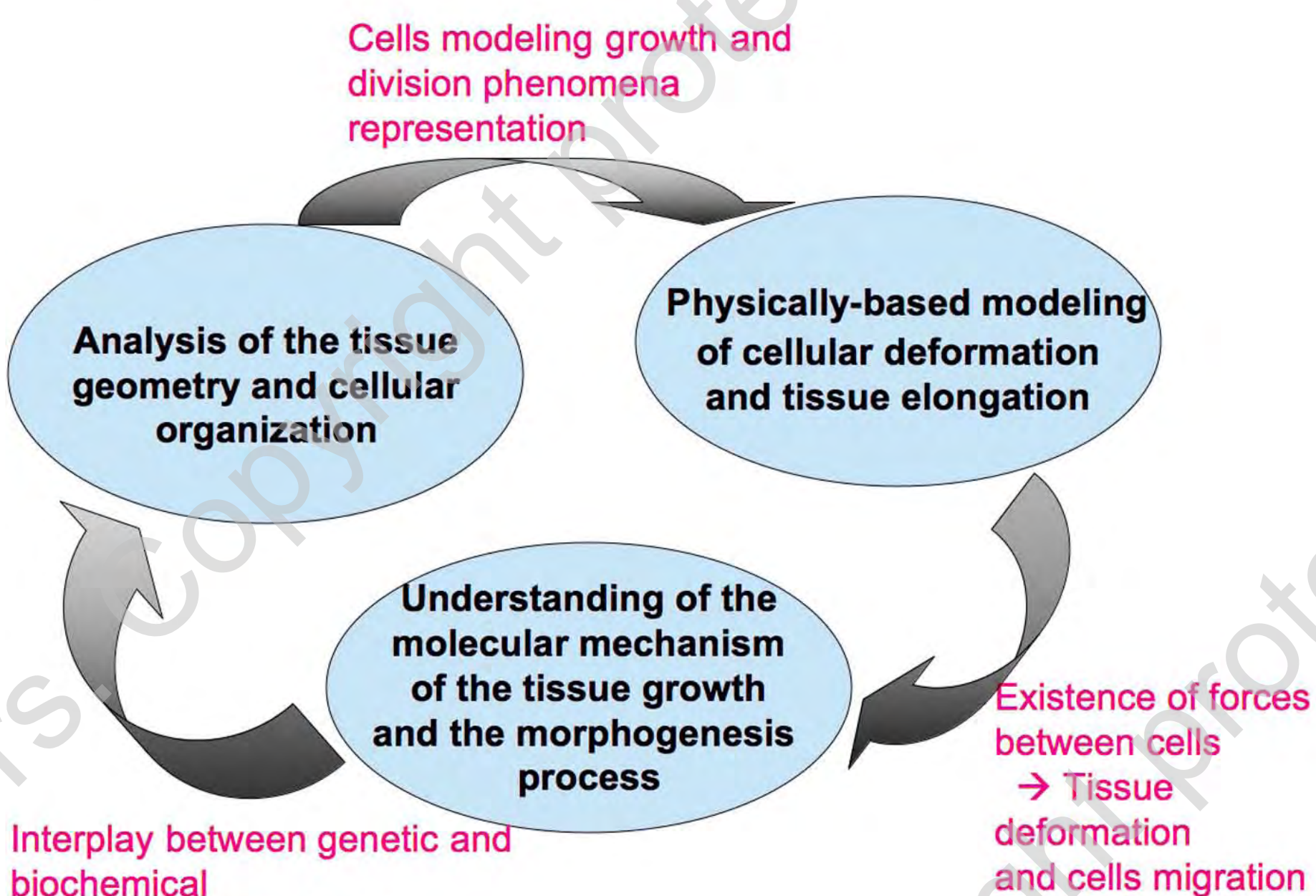
## The trophoblast Development Process



## How are the embryo stages of development distributed?

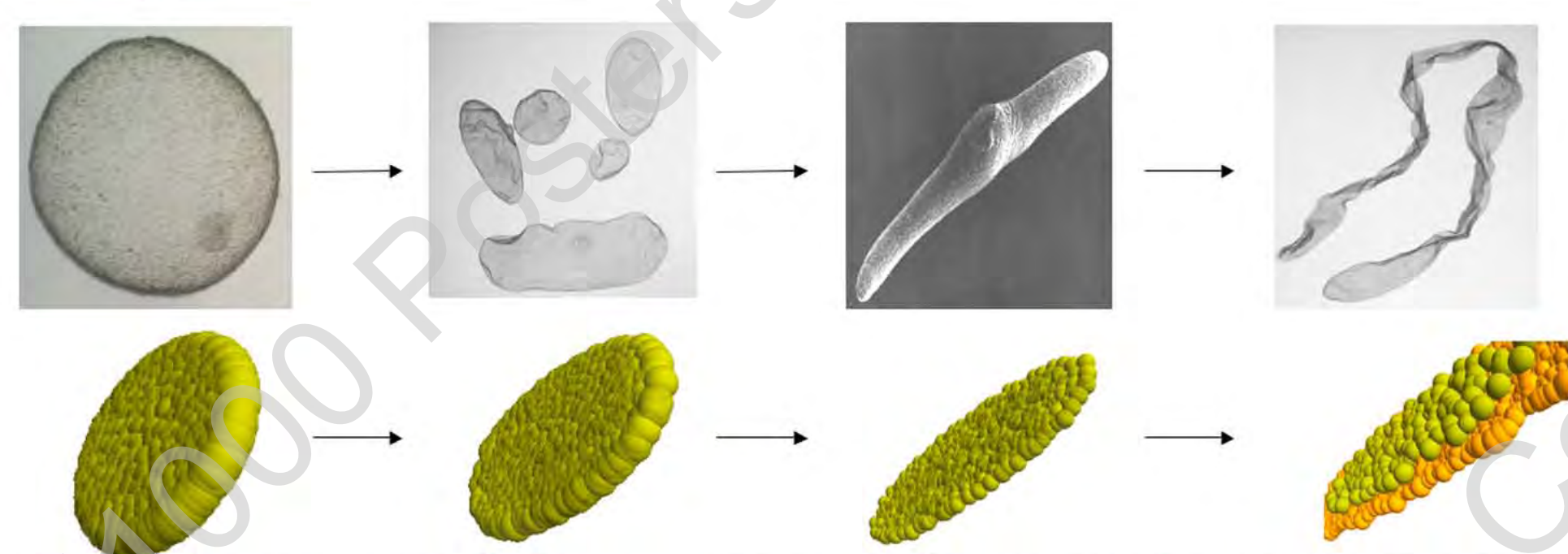


## Image analysis: Morphological & textural analysis



## Modeling & simulations

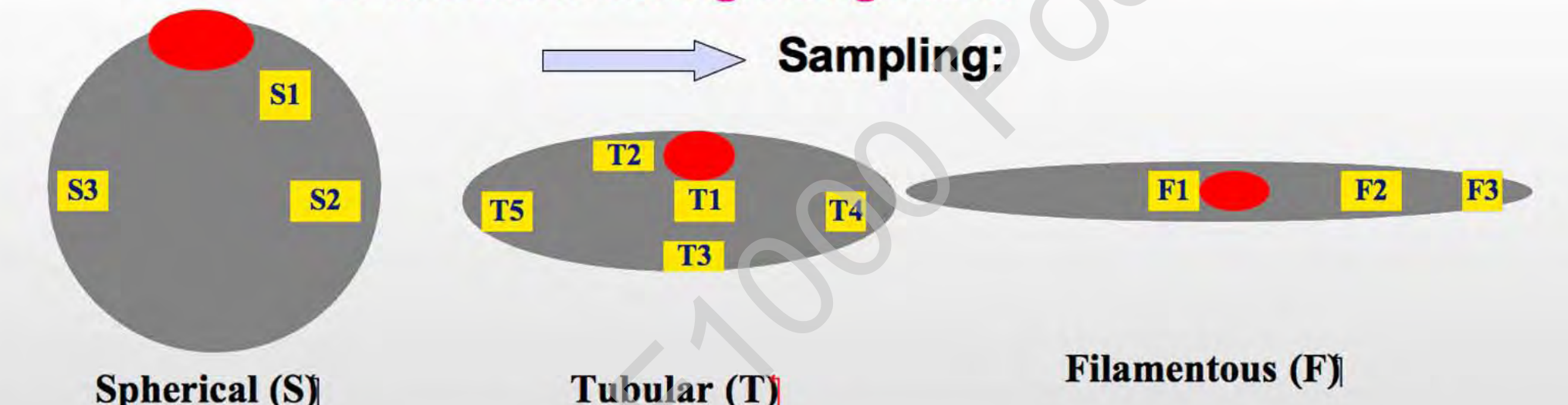
$$\underbrace{\Gamma_{cm} v_i}_{\text{friction with the environment}} + \underbrace{\sum_{innj} \Gamma_{ij} (v_i - v_j)}_{\text{friction between cells}} = \underbrace{f_i(t)}_{\text{random motion}} + \underbrace{\sum_{innj} F_{ij}}_{\text{rep-attract. forces}}$$



First preliminary simulations of the trophoblast at different stages of development based on C++ programming and using the force-based model. The asymmetry is due to the hypothesis of a preferred direction in cells division and movement.

**Collaborations:** François Graner, Michel Guillomot, Ignacio Ramis-Conde, Alain Trubuil

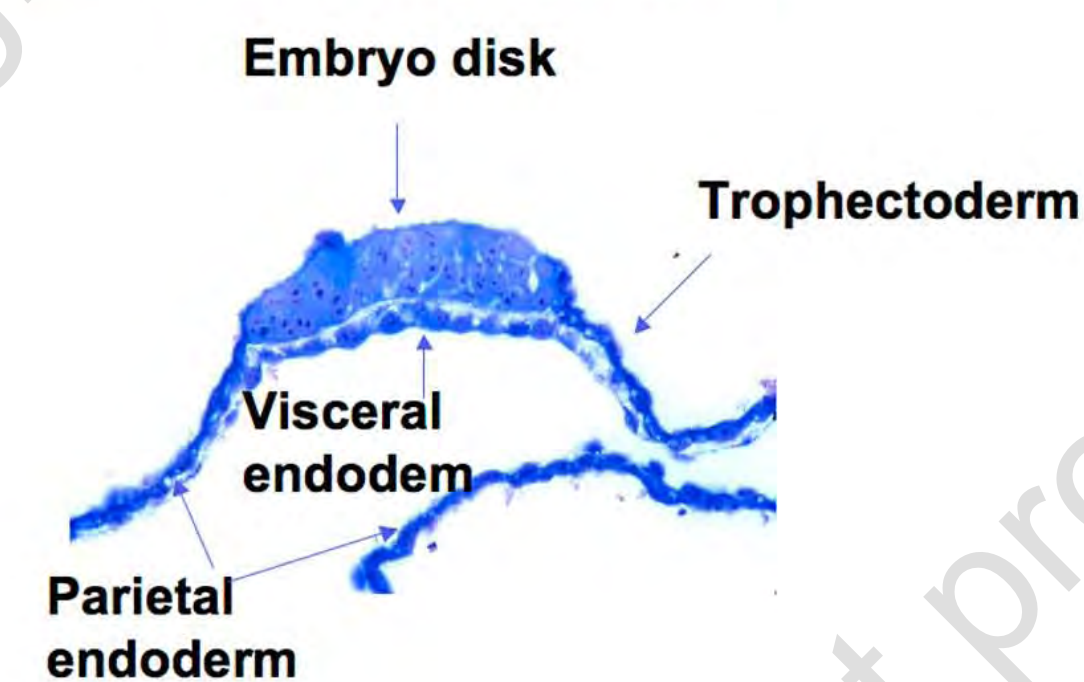
## Do the trophoblast cells have a specific shape or direction during elongation?



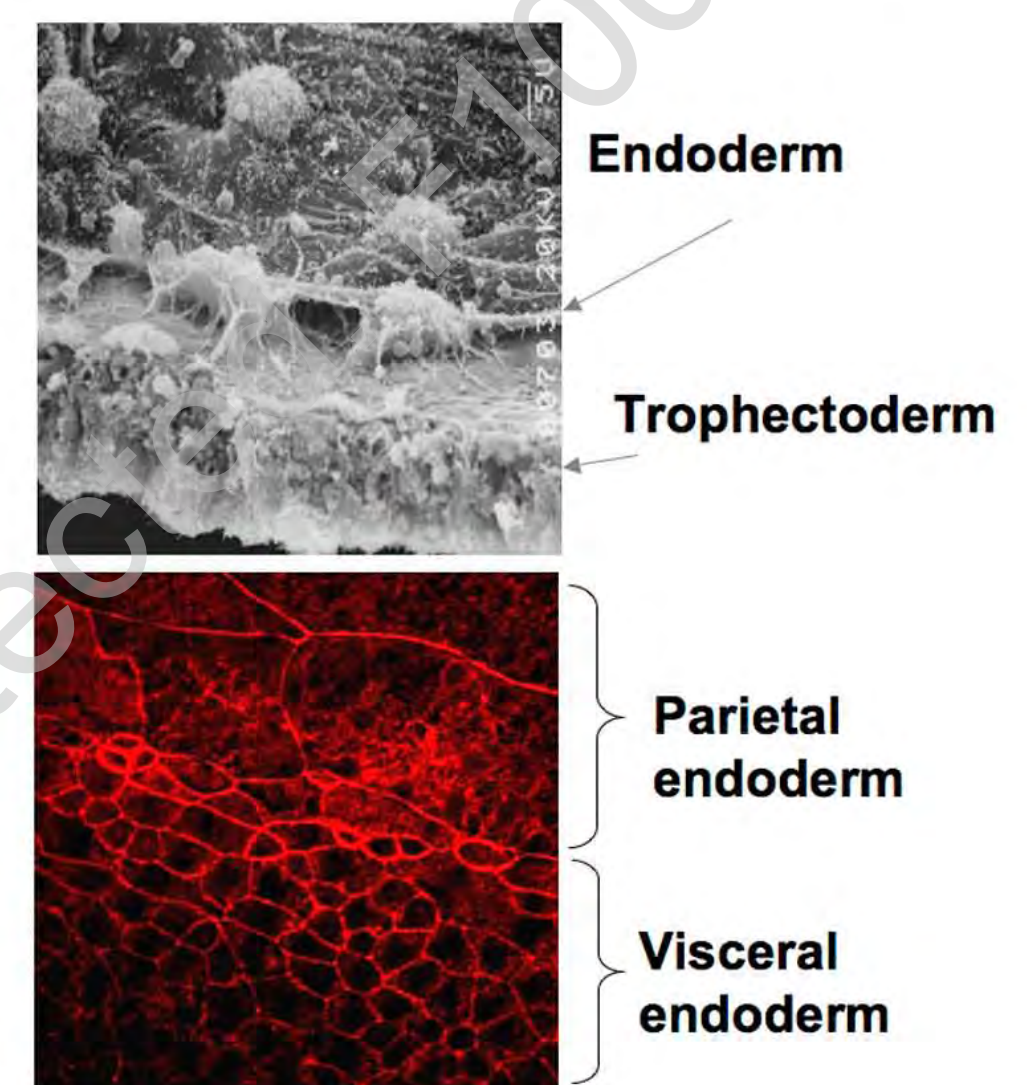
## Results:

1. Cells size within a sample changes a lot & most of cells look like hexagon
2. Cells orientation is random
3. Although, the tissue has an elongated shape, trophoblast cells organization is very isotropic

## Transverse section through the embryonic area of an ovoid conceptus



The trophoblast is a mononucleated epithelial tissue and the endoderm is a plurinucleated one



Bovine embryos