



**HAL**  
open science

## **POPSEC : molecular bases of acclimation to water deficit in poplar**

Marie-Béatrice Bogeat-Triboulot, David Cohen, Didier Le Thiec, Sandrine Balzergue, Marie-Laure Martin-Magniette, Jean-Pierre Renou, Philippe Label, Marie-Claude Lesage-Descauses, Françoise F. Laurans, Isabelle Bourgait, et al.

### ► To cite this version:

Marie-Béatrice Bogeat-Triboulot, David Cohen, Didier Le Thiec, Sandrine Balzergue, Marie-Laure Martin-Magniette, et al. POPSEC : molecular bases of acclimation to water deficit in poplar. 3. symposium franco-suédois UPRA, Nov 2009, Champenoux, France. 26 p. hal-02817980

**HAL Id: hal-02817980**

**<https://hal.inrae.fr/hal-02817980v1>**

Submitted on 6 Jun 2020

**HAL** is a multi-disciplinary open access archive for the deposit and dissemination of scientific research documents, whether they are published or not. The documents may come from teaching and research institutions in France or abroad, or from public or private research centers.

L'archive ouverte pluridisciplinaire **HAL**, est destinée au dépôt et à la diffusion de documents scientifiques de niveau recherche, publiés ou non, émanant des établissements d'enseignement et de recherche français ou étrangers, des laboratoires publics ou privés.

# POPSEC : molecular bases of acclimation to water deficit in poplar



INRA Nancy - UMR EEF  
INRA Bordeaux - UMR Biogeco  
INRA Orléans - UGAPF  
Université d'Orléans - LBLGC  
URGV Evry

Coord. : MB Bogeat-Triboulot

# Objectives

## ↪ Integrative study of the response of poplar to water deficit

- combining several approaches : **ecophysiology, transcriptomics and proteomics**
- studying different tissues in order to focus on different processes
  - mature leaves ->  $CO_2$  assimilation, cell metabolism
  - guard cells -> stomatal conductance regulation
  - wood and growing xylem -> cambial growth
  - root apices -> primary growth

## ↪ Identify genes, gene networks and transcription factors involved in drought tolerance

Poplar genomic toolkit

Genomic platforms  
Expertise in transcriptomic  
Expertise in proteomic

Diversity in drought tolerance between clones

Expertise in ecophysiology

**2 poplar clones: 1 tolerant and 1 sensitive to drought**

*Controlled water deficit and fine ecophysiology characterisation*



*Wood formation*

*Stem mechanics & hydraulics*

*Gas exchange, WUE*

*Root growth*

*Root hydraulics*

growing root apex

mature root

wood

differentiating xylem

leaf

stomata

Transcriptome  
Proteome

Transcriptome  
Proteome

Transcriptome  
Proteome

Transcriptome

Leaf T and P  
guard cells Transcriptome

**Identification of genes involved in drought tolerance**

Selection of some candidate genes by:  
- Nature of gene  
- Regulation in several organs

qPCR on other clones of different drought tolerance

Genetics

Fonctional validation  
Transformation?

# Experimental design

- ↪ 2 genotypes *P. deltooides x nigra*: Carpaccio and Soligo chosen for
  - similar productivity
  - similar WUE
  - contrasted productivity maintenance under water deficit

## ↪ Design

- 1 batch for repeated ecophysiological measurements
- 1 batch for molecular analyses
  - 2 biological replicates (pools of 3 plants) per modality



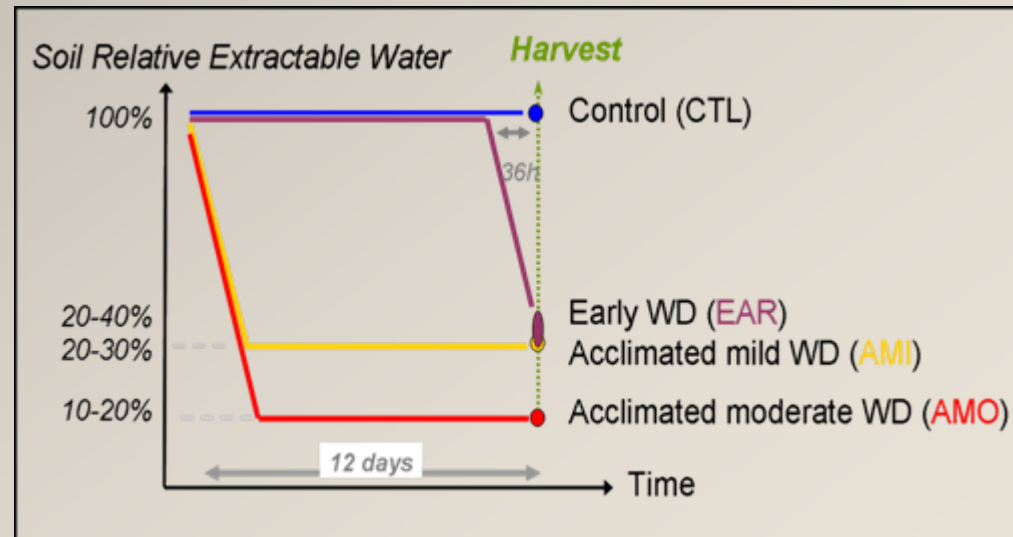
## ↪ 3 water deficit treatments

- Control of soil volumetric water content

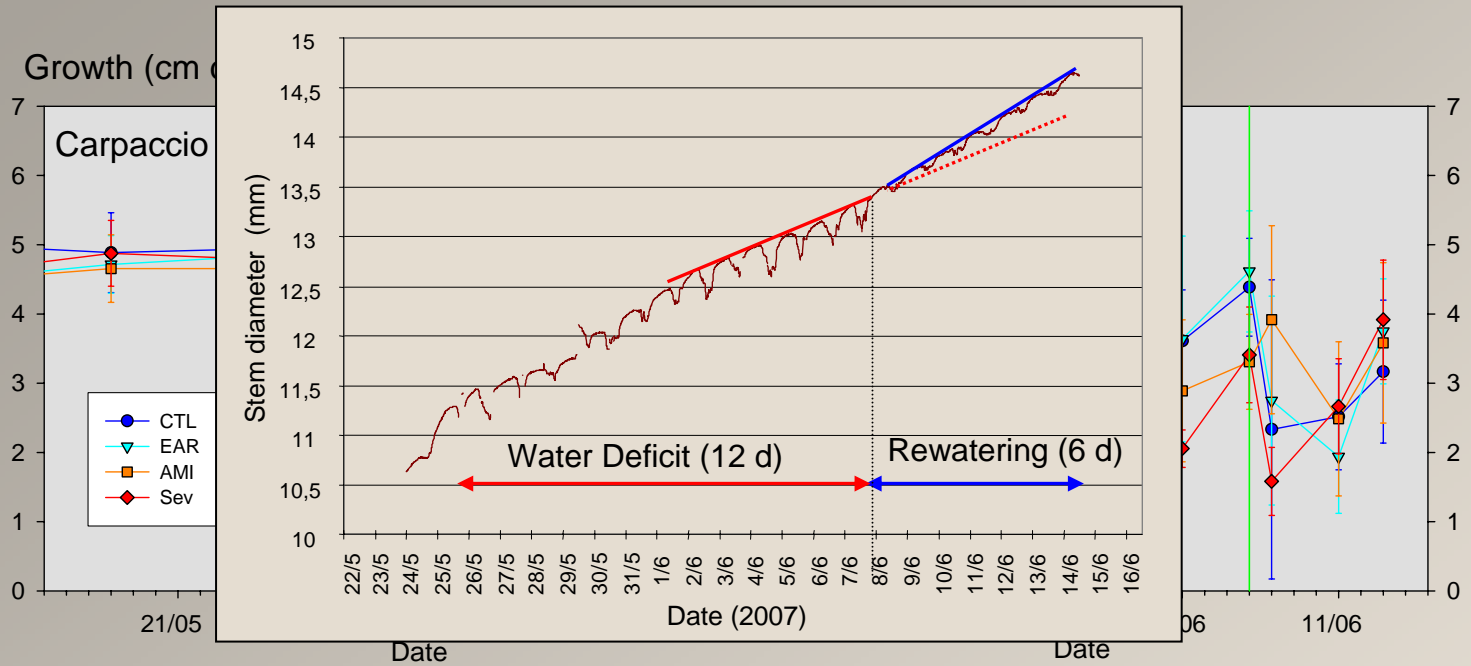
## ↪ Characterisation of water status, growth, gas exchange, wood anatomy, $\delta^{13}C$ (WUE)

## ↪ Tissues harvesting for transcriptome and proteome analyses

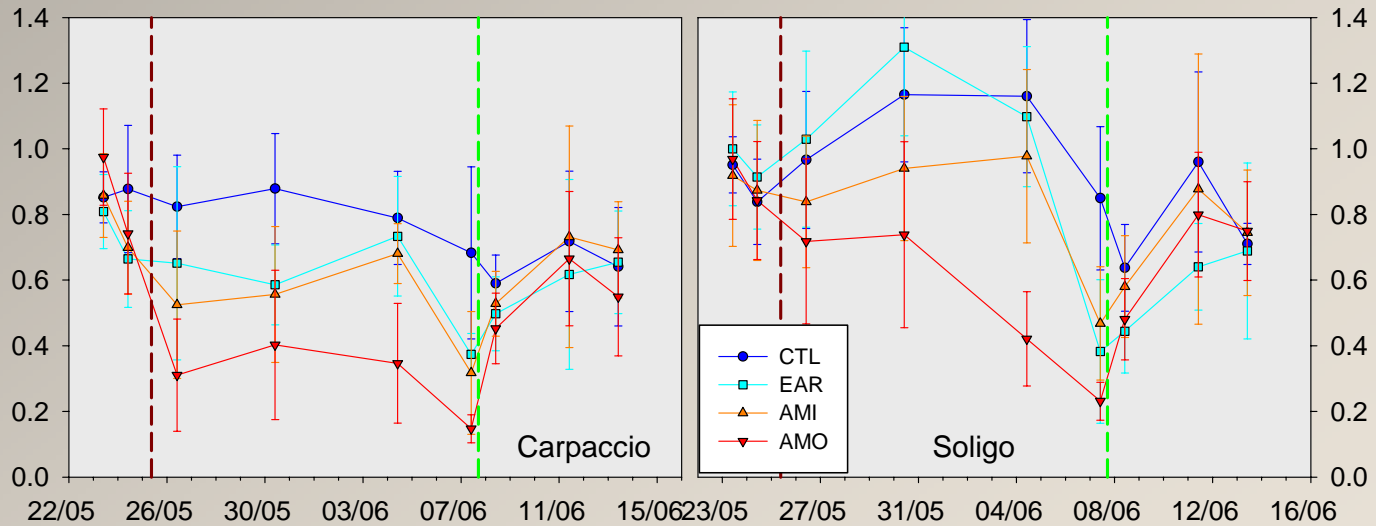
- mature leaves
- wood and growing xylem
- root apices



# Kinetics



Stomatal conductance,  $\text{mmol}\cdot\text{m}^{-2}\cdot\text{s}^{-1}$



# Ecophysiological response (D day)

		Absolute values				p value		
		CTL	EAR	AMI	AMO	Clone	trait	interac.
□ pd, MPa	Carpaccio	-0.13	-0.11	-0.11	-0.13	<b>&lt;0.001</b>	0.53	0.22
	Soligo	-0.23	-0.26	-0.29	-0.28			
Leaf RWC, %	Carpaccio	92	93	93	93	<b>&lt;0.001</b>	0.59	0.19
	Soligo	91	91	91	92			
□ FT, mosmol/kg	Carpaccio	627	618	648	667	0.11	<b>&lt;0.001</b>	0.27
	Soligo	616	624	676	716			
Primary growth, cm day-1	Carpaccio	4.6	4.8	3.4	3.1	1.0	<b>&lt;0.001</b>	0.92
	Soligo	4.5	4.7	3.4	3.5			
Radial growth, mm day-1	Carpaccio	0.168	0.121	0.182	0.146	0.53	<b>&lt;0.001</b>	0.24
	Soligo	0.198	0.146	0.182	0.131			
LMA, g m-2	Carpaccio	53.1	54.6	57.9	55	<b>0.013</b>	<b>0.047</b>	0.59
	Soligo	54.8	57.9	65.6	63.3			
A, μmol m-2 s-1	Carpaccio	12.5	10.9	12.3	9.4	<b>&lt;0.001</b>	<b>0.002</b>	0.49
	Soligo	19.0	17.4	18.0	12.6			
gs, mol m-2 s-1	Carpaccio	0.68	0.37	0.32	0.15	0.05	<b>&lt;0.001</b>	0.7
	Soligo	0.85	0.38	0.47	0.23			
Wi (A/g), %°	Carpaccio	20.7	30.0	43.8	66.7	0.29	<b>&lt;0.001</b>	<b>0.012</b>
	Soligo	23.2	56.0	41.0	57.0			

# Ecophysiological response

- ⇒ moderate water deficit => small but significant physiological responses
  - primary and secondary growth,  $g_s$ ,  $CO_2$  assimilation rate,  $\delta^{13}C$
  - significant effect of EAR on  $g_s$
  - differences between AMI and AMO (radial growth,  $A$ ,  $g_s$ , WUE,  $\Pi_{FT}$ )
  
- ⇒ intrinsic differences between clones
  
- ⇒ almost no significant interaction genotype x treatment :
  - the difference in WD tolerance not due to large contrast in one or several process(es)
  - tolerance = result of the time integration of weak differences



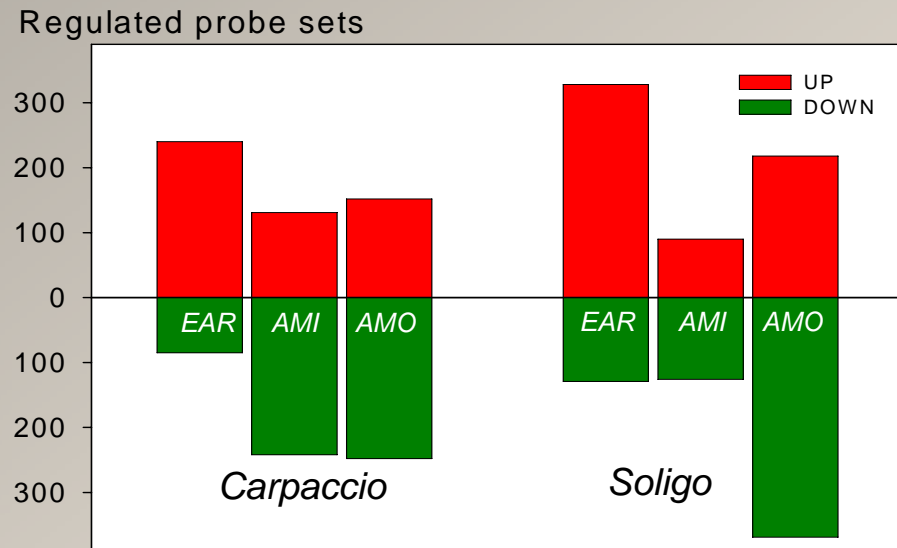
# Leaf transcriptome

## Affymetrix Poplar GeneChip microarray

partial annotation -> completion of probe set annotation

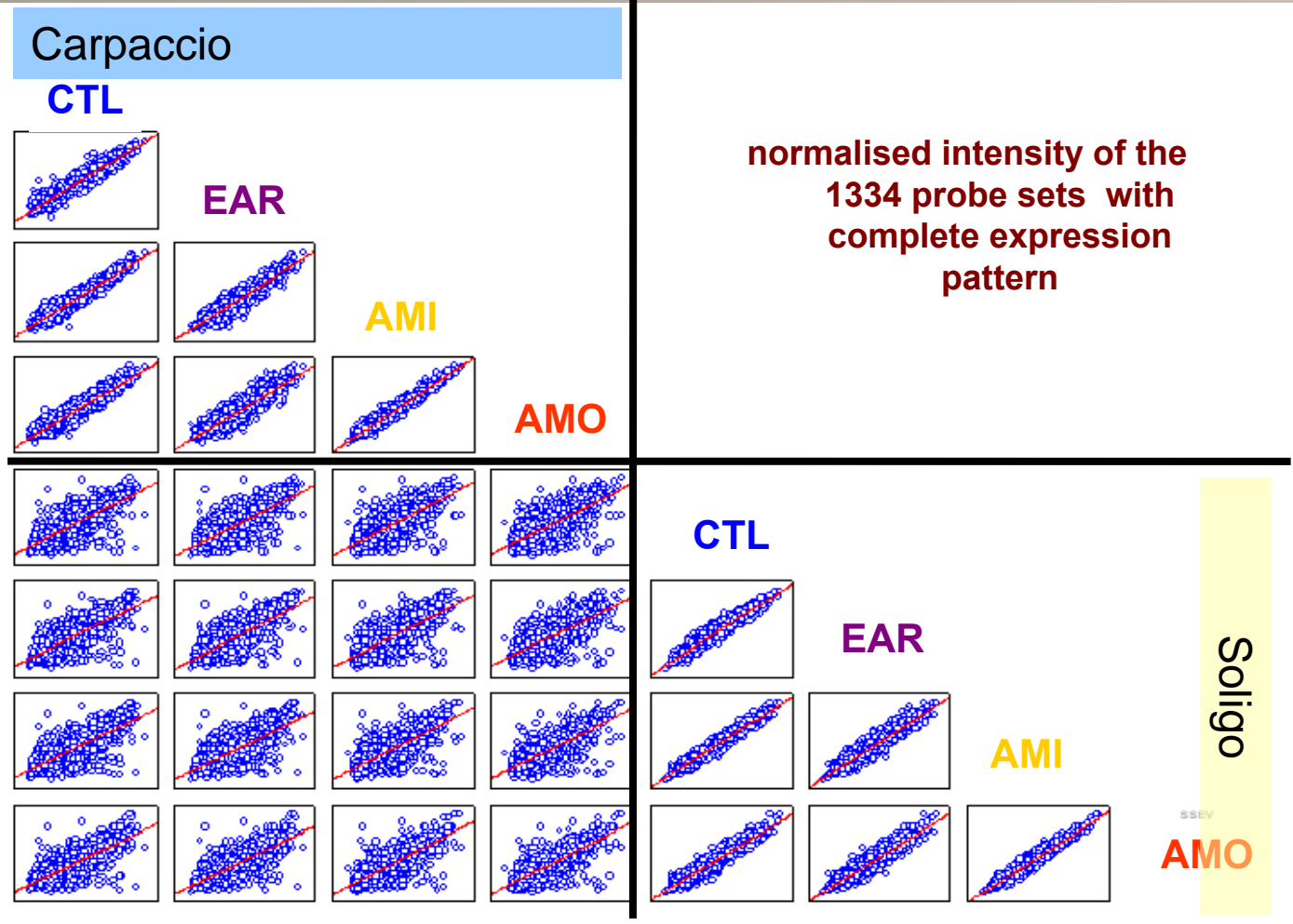
36,687 out of the 61,000 probe sets of the array were validated in our comparative set-up (DNA hybridization, ESTs)

2,195 DW responsive probe sets  
(no Log 2 ratio cut-off,  $p < 0.05$ )



- ↳ short term response : mainly up-regulations
- ↳ long term response : mainly down-regulations
- ↳ genotype specificity : sensitive genotype Soligo showed
  - contrasted response between the two levels of long term WD
  - more numerous gene regulations in comparison with Carpaccio

# Leaf transcriptome



- ↪ Expression strongly contrasted between genotypes
- ↪ Rank conservation among treatments within genotypes

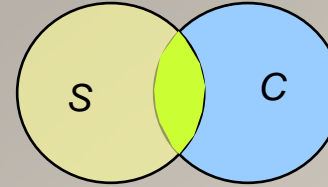
# WD markers and candidates for WD tolerance in leaves

## Stress markers

Homeobox-leucine zipper protein\*  
Galactinol synthase 1  
RCI 2A - like  
Protein phosphatase 2C (2)\*  
Xyloglucan endotransglycosylase\*

*concordant with litterature*

*(Bray, 2004; Bogeat-Triboulot, 2007)*



## Candidates for water deficit tolerance

*specific of the short term response (EAR)*

*common to EAR, AMI, AMO*

Unknown protein EAR AMI AMO  
ABA 8'-hydroxylase (2)  
ABC transporter family protein  
Receptor-like protein kinase  
LRR receptor-like protein kinase  
NBS-LRR type

**(84 + 36)**

AREB

ABA-induced-like protein  
SNARE-interacting protein  
Aquaporin TIP / PIP  
NADPH oxidase  
Galactinol synthase 2  
LEA (4)  
ERD protein-related  
Rapid alkalization factor  
putative serine protease (2)

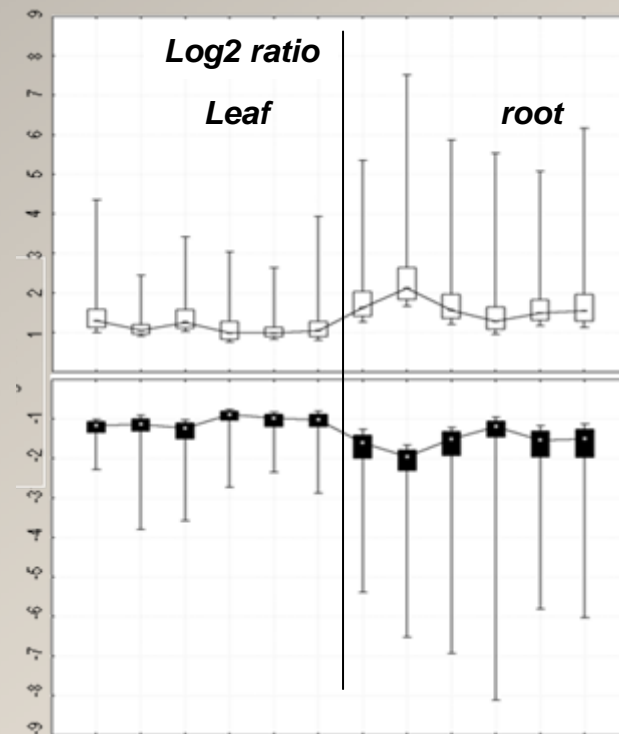
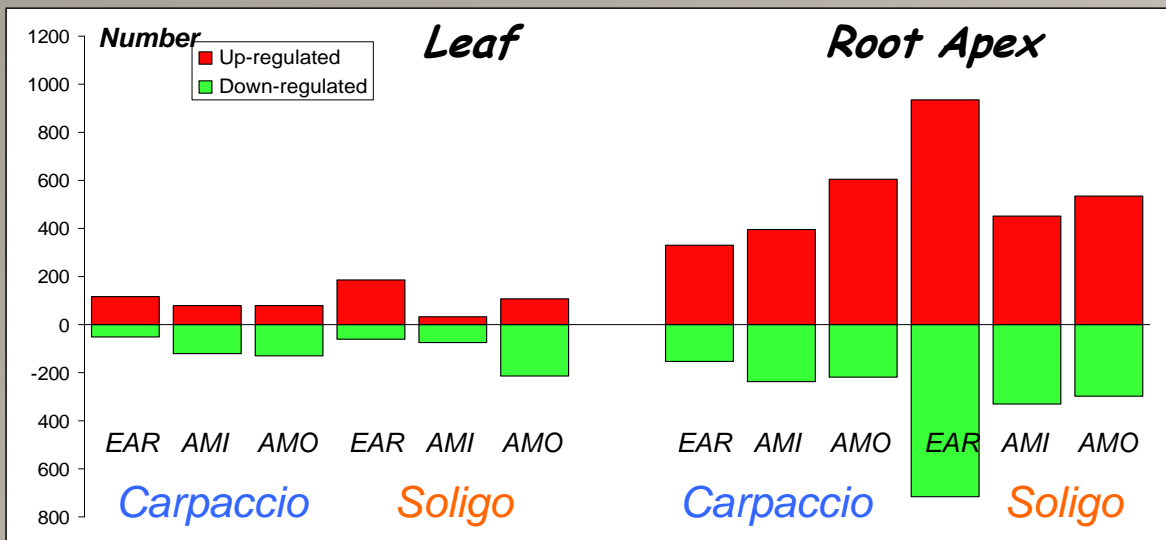
*specific of the long term response (AMI et AMO)*

**(13 + 43)**

Polyphenol oxidase  
Superoxide dimutase  
Alcohol dehydrogenase  
WAK-Like (6)  
Sucrose synthase (3)  
NBS-LRR family protein (6)

# Leaf and root transcriptome meta-analysis

Data set: 6725 probe sets regulated at least once among the 12 combinations



↳ Root apex transcriptome more responsive than the mature leaves one

- number of regulations
- higher fold change

# Leaf and root transcriptome meta-analysis

## ↪ Leaf and root common regulated genes : common stress marker

- Homeobox-leucine zipper protein (*atHB12-like*)
- Protein phosphatase 2C
- NCED, caroten dioxygenase activity
- HSP, HSP-binding
- Bet-v1 allergen (Pyr-like protein)
- Etc ....

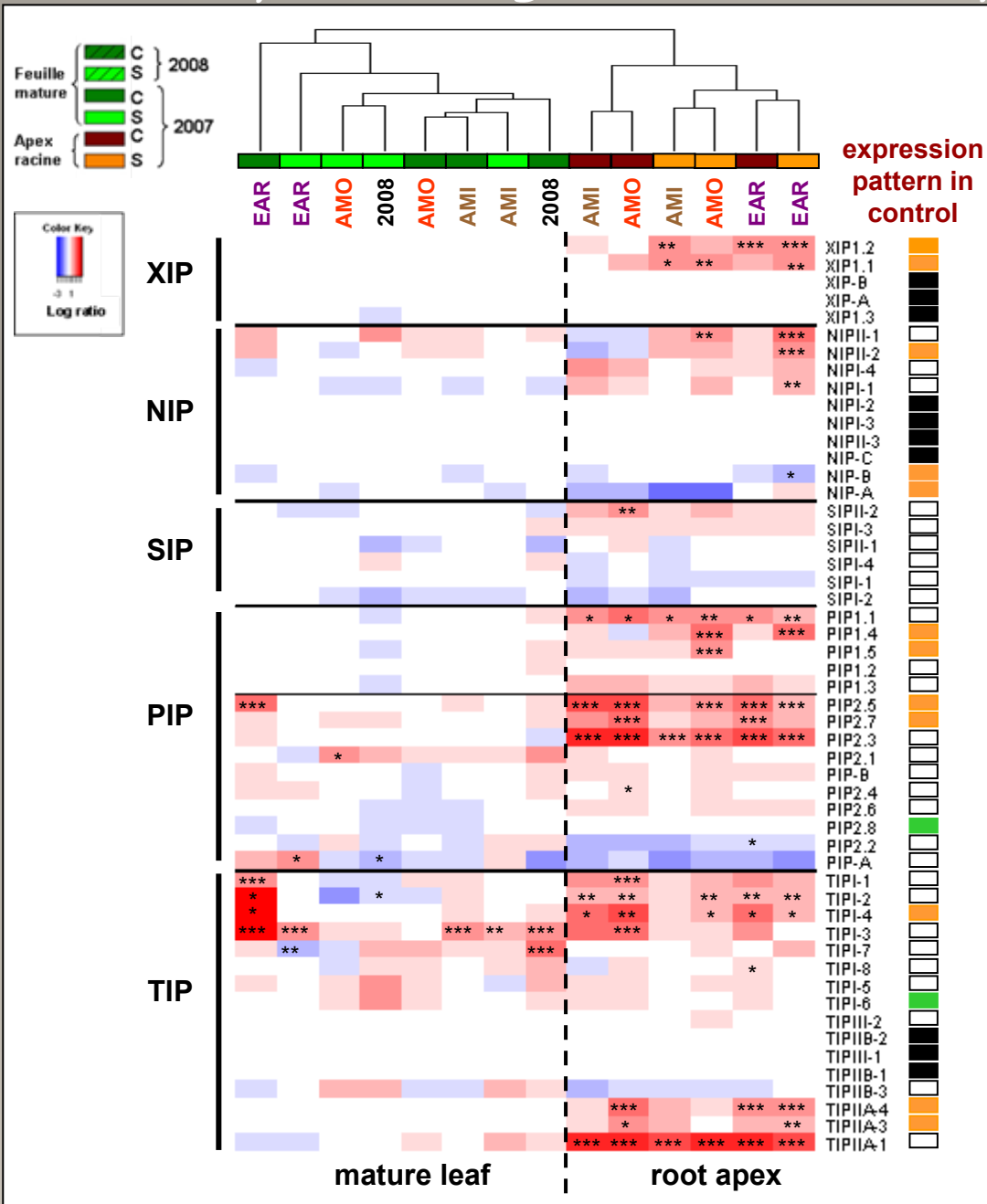
## ↪ Leaf specific regulated genes

- Galactinol synthase-like
- B-glucosidase (other photosynthesis-associated gene)
- Etc ....

## ↪ Root specific regulated genes

- PIP1-4
- Beta-caroten hydrolase
- ABC transporter
- Asparagine synthetase
- Early responsive to dehydration (*AtERD15-like*)
- ACC oxidases
- Transferases
- F-Box family
- Etc...

# Transcriptional regulation of the aquaporins family



- Expression in controls
  - 10 genes not expressed
  - 12 genes root-specific
  - 2 genes leaf-specific

More numerous and stronger regulation in root apices as compared to leaves (similar to the whole genome response)

Co-regulations detection

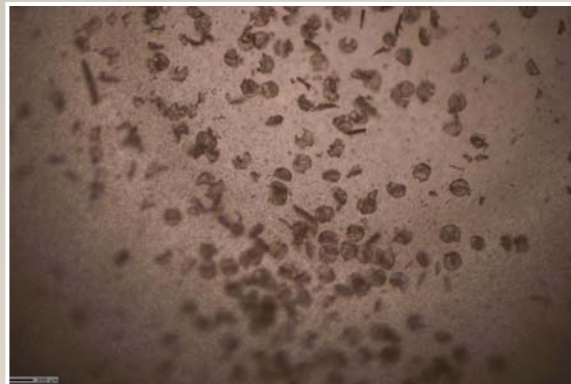
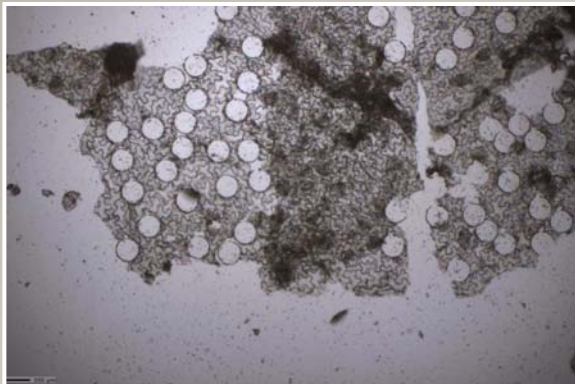
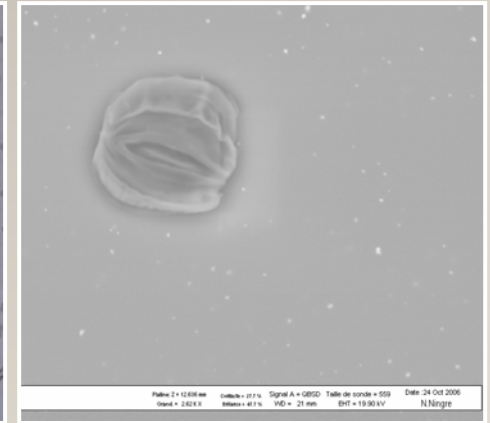
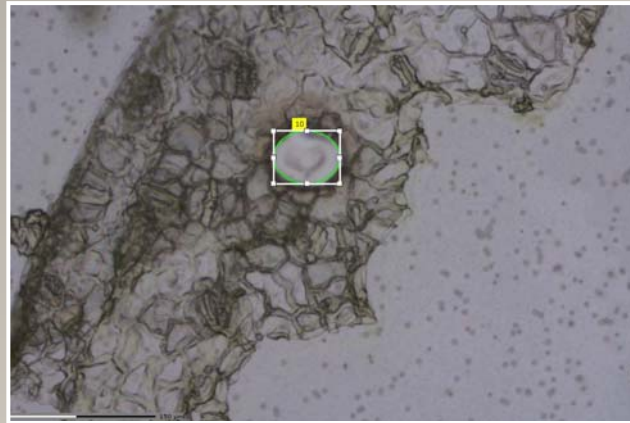
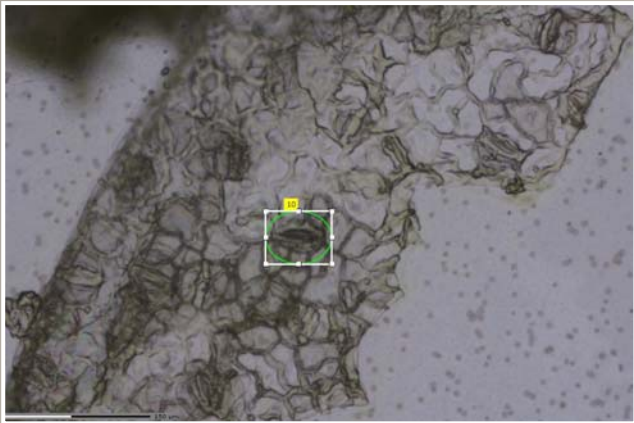
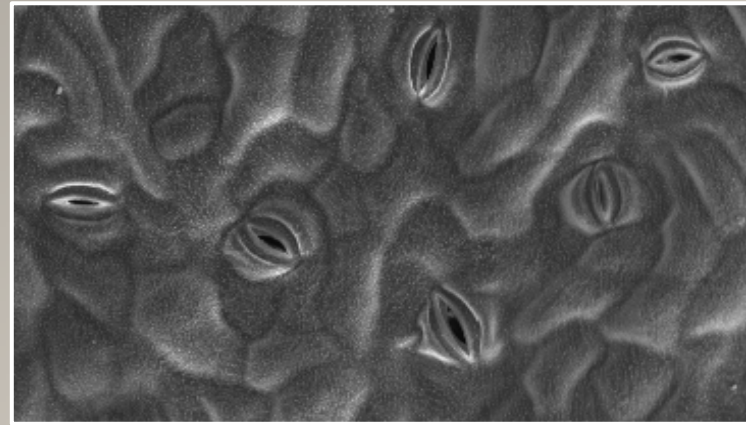
Induction detection
 

- TIP1.4, PIP2.5 in leaves

Identification of AQPs potentially involved in drought tolerance

# Guard cell transcriptomics

Laser microdissection (1500 guard cell complexes)

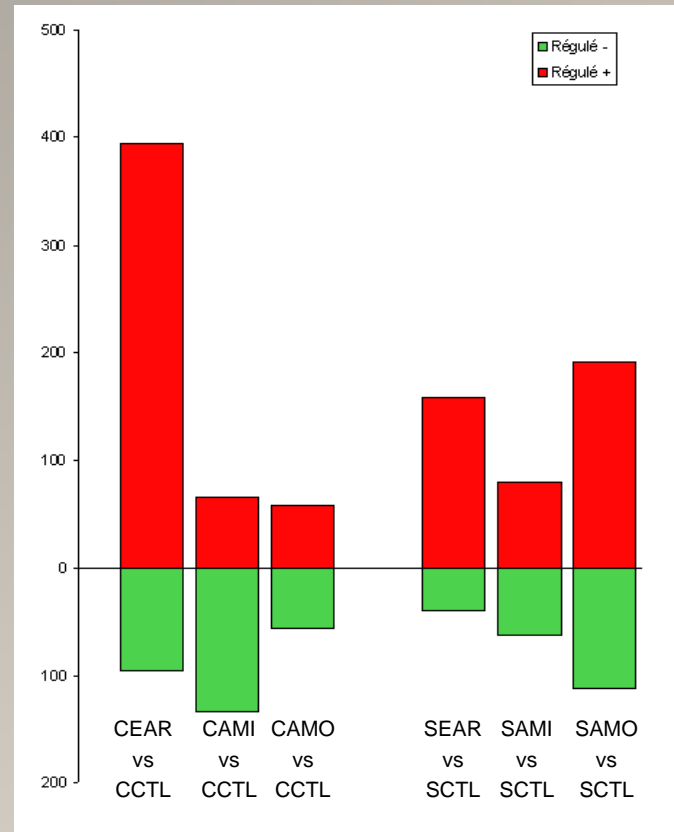
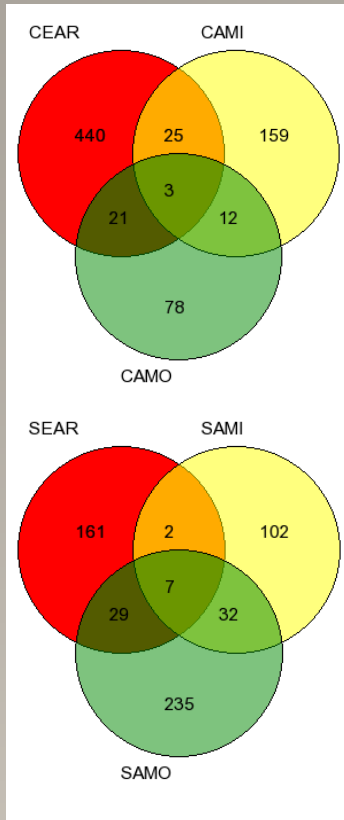
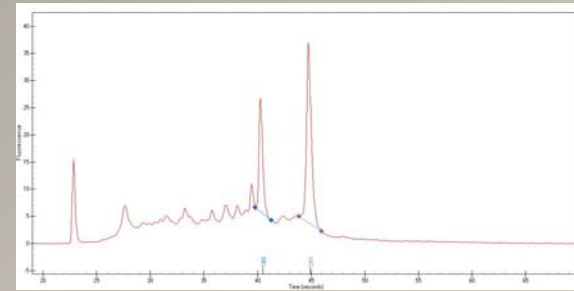


# Guard cell transcriptomics

RNA extraction

Amplification

Hybridization on microarrays



1,196 DW responsive probe sets  
(no Log 2 ratio cut-off,  $p < 0.05$ )

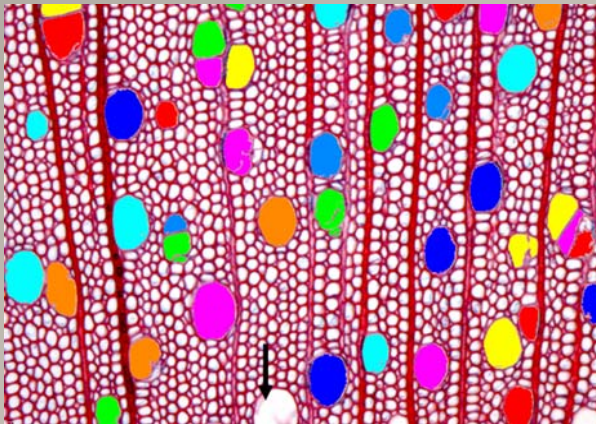
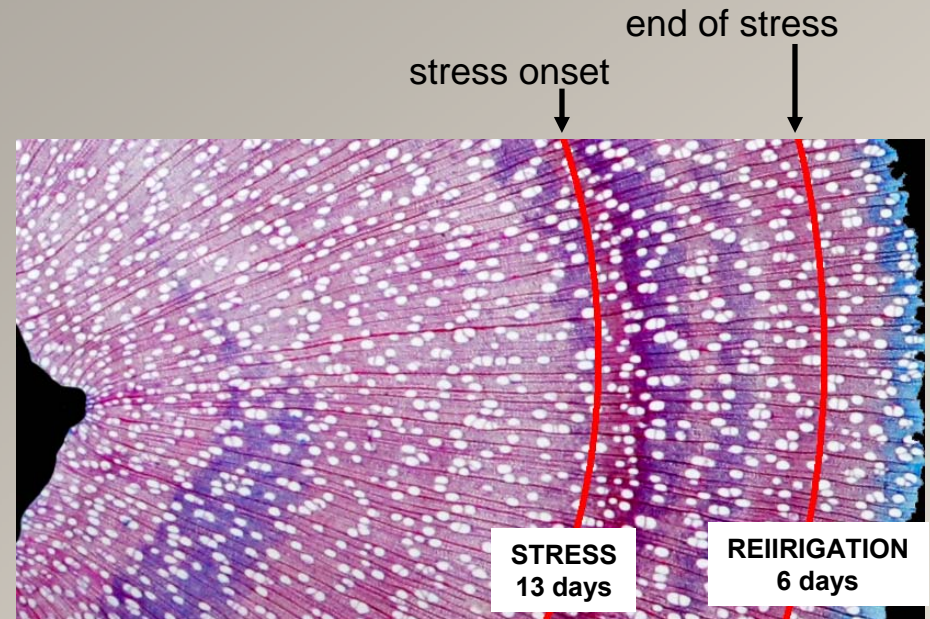
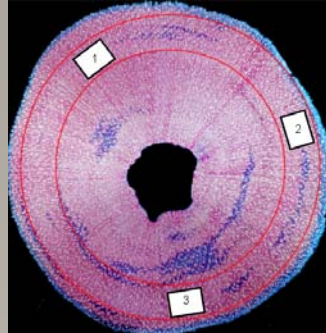
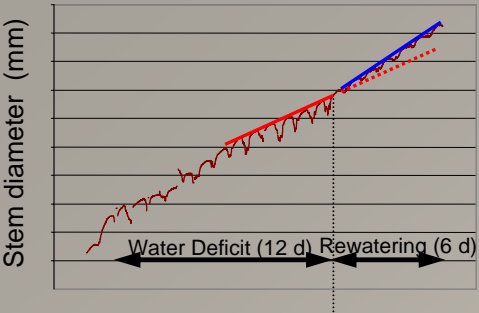
↪ Rapid and strong induction response in the tolerant genotype

↪ Strong regulation levels

Deeper analysis currently running



# Wood histology



- ↪ Differences in vessel mean CSA and in vessel total CSA fraction between clones
- ↪ Fiber and vessel mean CSA reduced under WD
- ↪ Vessel total CSA fraction insensitive to WD
- ↪ Conservation of genotype differences under WD

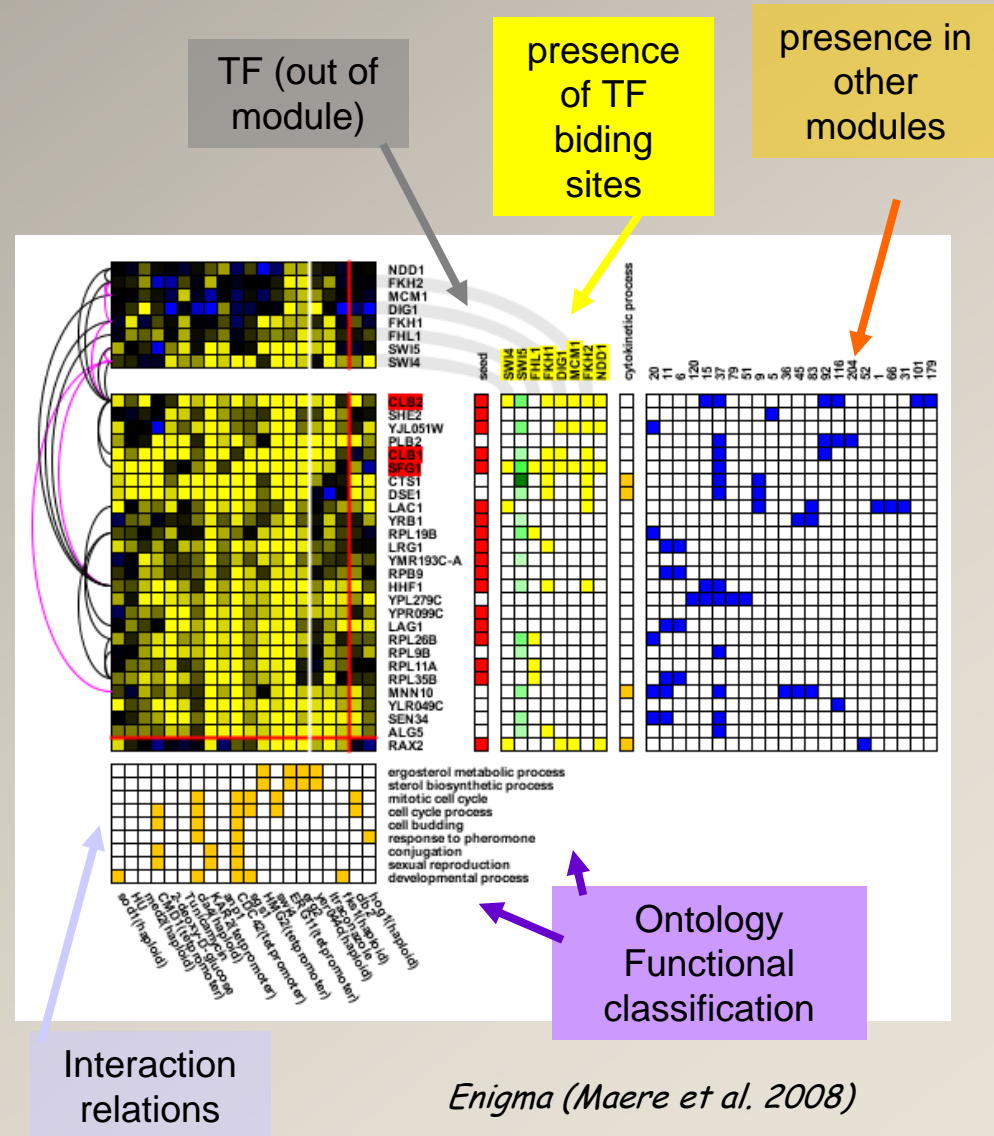
# Gene networks in wood

↪ 484 genes classified in 15 modules

↪ 7 modules covering 51 % of gene regulation

↪ Main functional modules :

- GH17, GH3, GT2, pectine esterase laccase .... Cell wall construction
- Snare-like, IMP, Aquaporins, ABC transporter : Cell membrane associated proteins



Poplar genomic toolkit

Genomic platforms  
Expertise in transcriptomic  
Expertise in proteomic

Diversity in drought tolerance  
between clones

Expertise in ecophysiology

**2 poplar clones: 1 tolerant and 1 sensitive to drought**



*Wood formation*

*Root growth*

*Root hydraulics*

*Stem mechanics & hydraulics*

*Gas exchange, WUE*

growing root apex

mature root

wood

differentiating xylem

leaf

stomata

Transcriptome

Transcriptome

Transcriptome

Transcriptome

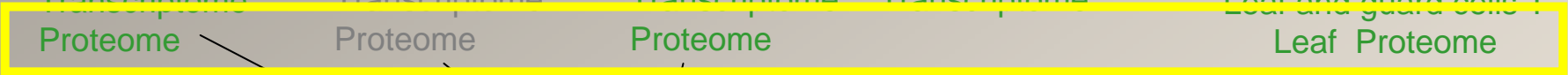
Leaf and guard cells T

Proteome

Proteome

Proteome

Leaf Proteome



**Identification of genes involved in drought tolerance**

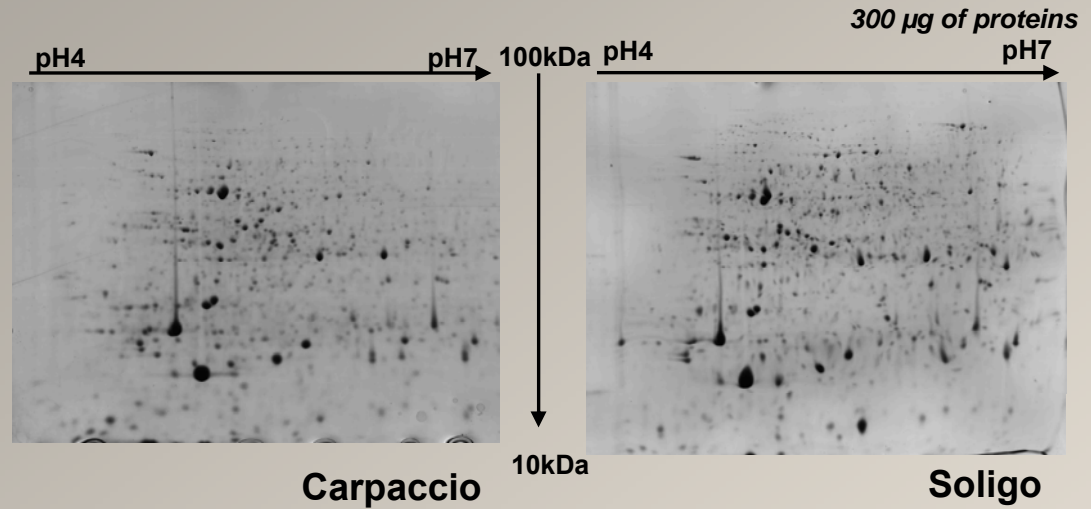
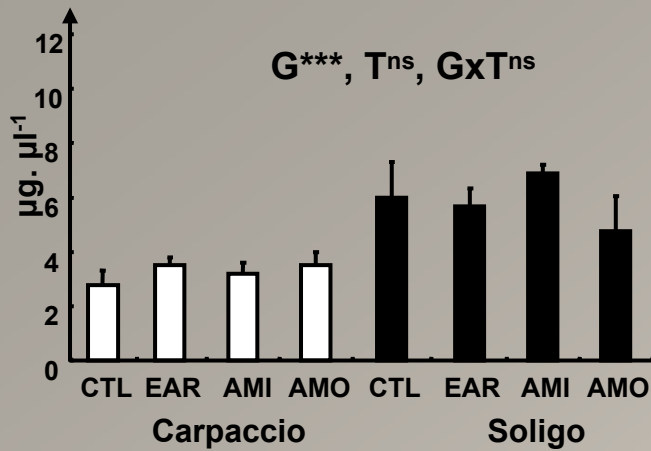
Selection of some candidate genes by:  
- Nature of gene  
- Regulation in several organs

qPCR on other clones of different drought tolerance

Genetics

Fonctional validation  
Transformation?

# Leaf proteome



- ↪ higher protein content in Soligo
- ↪ higher spots number in Soligo (1200) than in Carpaccio (600)
  - comparison of 563 reproducible spots

	ANOVA <i>p</i> -value ≤ 0.05	FDR <i>q</i> -value ≤ 0.05
G	400	400
T	40	0
G x T	43	0

	ANOVA <i>p</i> -value ≤ 0.05	FDR <i>q</i> -value ≤ 0.05
G	361	361
T	59	0
G x T	55	0

	ANOVA <i>p</i> -value ≤ 0.05	FDR <i>q</i> -value ≤ 0.05
T	27	0

	ANOVA <i>p</i> -value ≤ 0.05	FDR <i>q</i> -value ≤ 0.05
T	53	1

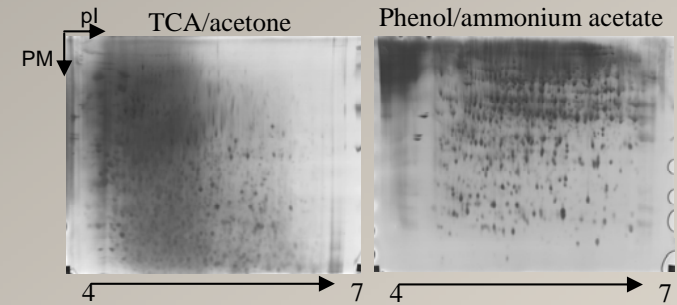
- ↪ strong genotype effect
- ↪ after FDR, no significantly WD-regulated protein was discovered

# Root apex proteome

↪ 3\*40 root apices, i.e. about 500 mg fresh weight

↪ Required protocol optimisation of several steps :

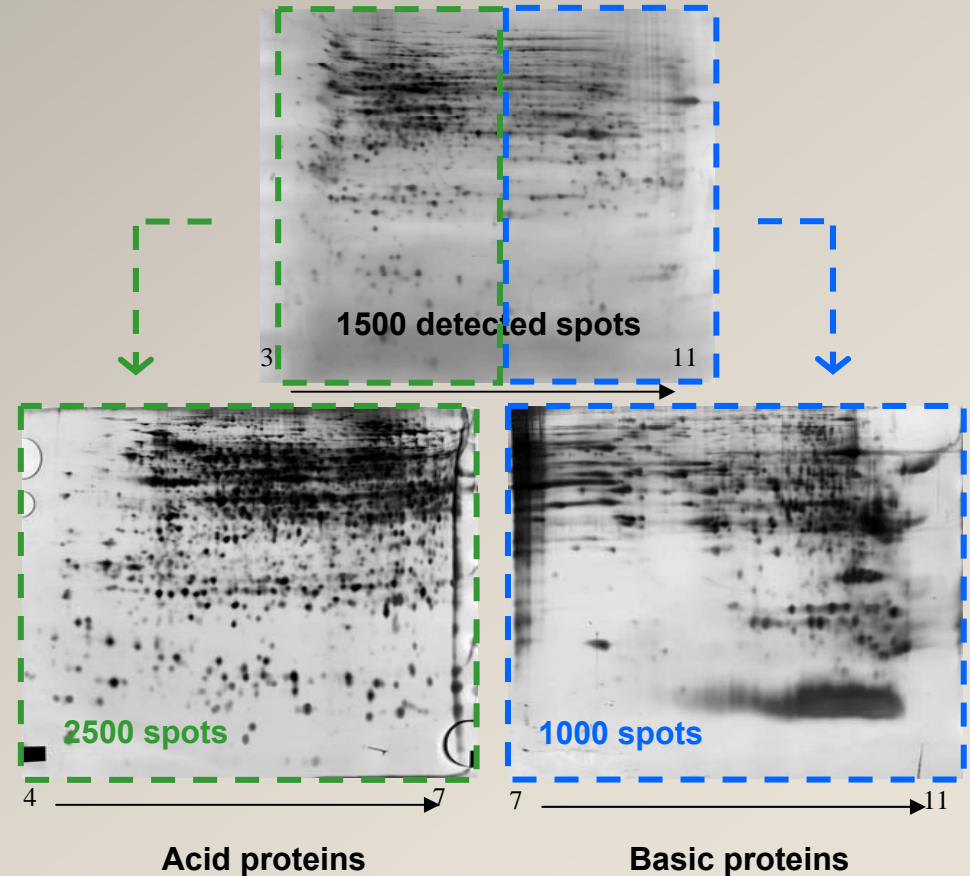
- extraction
- electrophoresis conditions : small pH range (4-7 & 7-11)



↪ Acid and basic proteins

↪ Statistical analysis

- PCA
- Hierarchical clustering

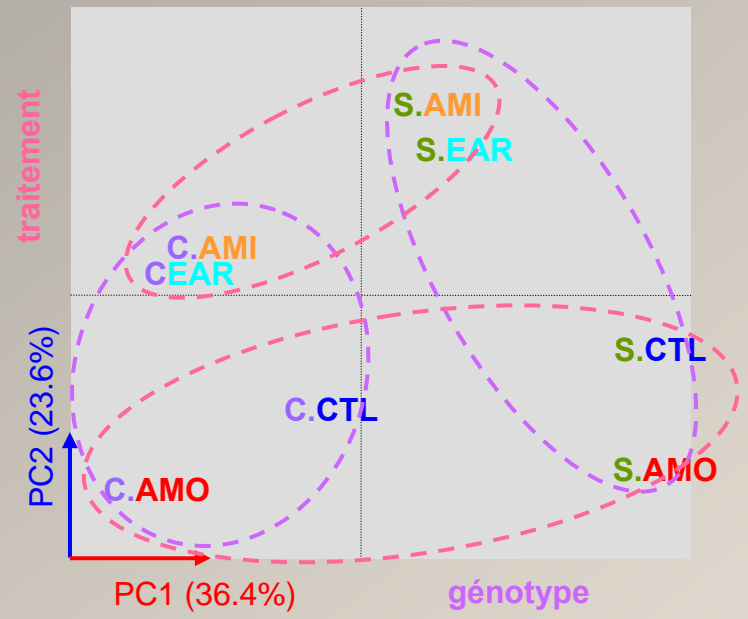
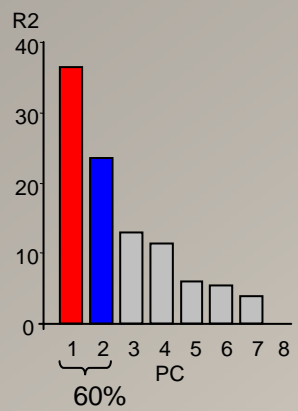


# Root apex proteome

Acid proteins  
1540 reproducible spots

1st source of variation of protein quantities: genotype

2nd source of variation of protein quantities: treatment

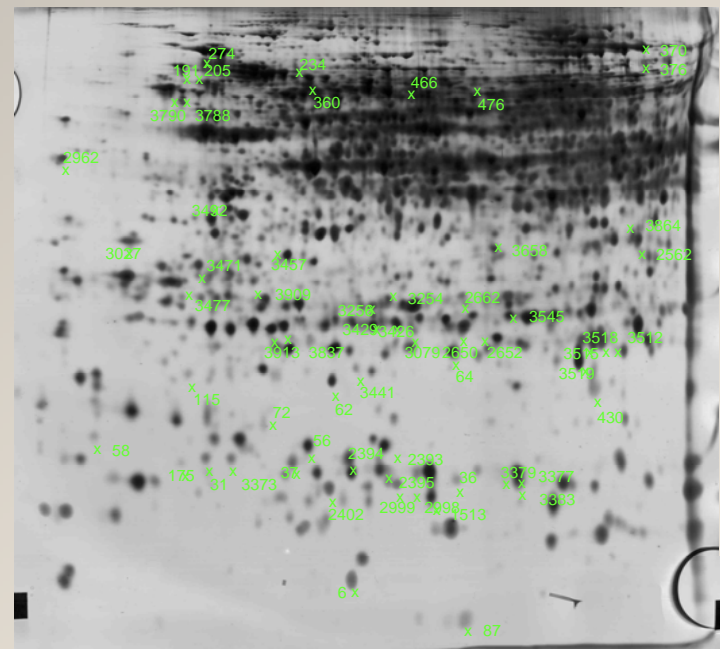


Excision of selected proteins

- 61 acid proteins
- 33 basic proteins

LC-MS/MS identification

- Heat Shock Proteins (HSP70, HSP82)
- 14-3-3 protein
- 2 APX, PRX2B, GST
- etc...



Poplar genomic toolkit

Genomic platforms  
Expertise in transcriptomic  
Expertise in proteomic

Diversity in drought tolerance between clones

Expertise in ecophysiology

2 poplar clones: 1 tolerant and 1 sensitive to drought

Controlled water deficit and fine ecophysiology characterisation

Root growth

Root hydraulics

Wood formation

Stem mechanics & hydraulics

Gas exchange, WUE

growing root apex

mature root

cambium

differentiating xylem

leaf

stomata

Transcriptome

Transcriptome  
Proteome

Transcriptome  
Proteome

Transcriptome  
Proteome

Leaf T and P guard cells transcriptome

Identification of genes involved in drought tolerance

Selection of some candidate genes by:  
- Nature of gene  
- Regulation in several organs

qPCR on other clones of different drought tolerance

Genetics

Fonctional validation  
Transformation?

# Expression in other clones

↪ Independent experiment on 8 genotypes:

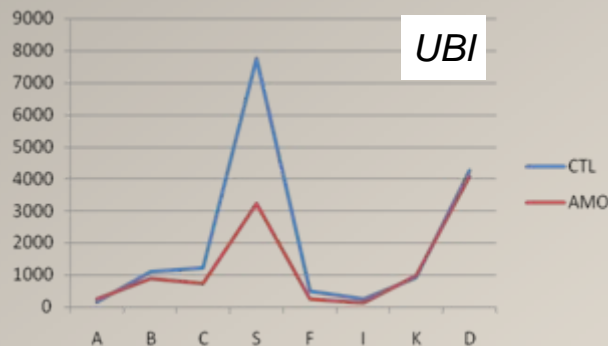
- Carpaccio, Soligo
- 4 others *P. deltoides* x *nigra* :  
I214, Dorskamp, Koster, Flévo
- *P. trichocarpa* Beaupré
- *P. tremula* x *alba* 717-1B4



↪ long-term water deficit (10 days at 20% REW)

↪ RT-qPCR analyses

- housekeepers genes
- currently running





# Conclusions from this integrative study

- ↪ Validated water deficit "markers"
  - previously identified in other species or poplar genotypes
  
- ↪ Identified candidate genes for drought tolerance in poplar
  
- ↪ Focused on cell types and specialised tissues :
  - stomata vs whole leaf
  - growing xylem vs whole wood
  
- ↪ Between genotype differences higher than drought response
  - for physiological traits, histology, transcripts and proteins
  - also pointed out by Wilkins et al (2009, mature leaves)
    - this point has to be addressed by diversity analyses
  
- ↪ Root apices more "responsive" than mature leaves
  - seen at the scale of the whole genome as well as at the scale of one multigene family
  - seen at the transcript level as well as at the protein level
    - growing vs mature tissue ?
    - root : closer to the constraint ?
    - organ specificity ?

# Collective work :

## ↪ INRA NANCY (UMR EEF)

- Irène Hummel
- David Cohen
- Rémy Merret
- Didier Le Thiec
- Nathalie Ningre
- Erwin Dreyer

## ↪ INRA ORLEANS (UAGPF)

- Jean-Charles Leplé
- Philippe Label
- Gilles Pilate
- Annabelle Déjardin
- Isabelle Bourgait

## ↪ ORLEANS UNIVERSITY (LBLGC)

- Franck Brignolas
- Domenico Morabito
- Ludovic Bonhomme

## ↪ INRA BORDEAUX (UMR Biogeco)

- Delphine Vincent
- Christophe Plomion

## ↪ URGV Evry

- Sandrine Balzergue
- Marie-Laure Martin-Magniette
- Jean-Pierre Renou

## ↪ INRA Nancy (UMR IAM)

- Emilie Tisserant

## ↪ Ecogenomic platform of INRA Nancy

*Thank you Irène and David for your support on my way to genomics...*

*Thank you for your attention*

