



HAL
open science

Fire Paradox Fuel Manager: A fuel manager for wildland fire modelling. Diaporama

Isabelle Lecomte, Eric Rigolot, Oana Vigy, Francois F. Rouault de Coligny,
Sébastien Griffon

► **To cite this version:**

Isabelle Lecomte, Eric Rigolot, Oana Vigy, Francois F. Rouault de Coligny, Sébastien Griffon. Fire Paradox Fuel Manager: A fuel manager for wildland fire modelling. Diaporama. Capsis annual workshop, Jun 2008, Montpellier, France. 29 p. hal-02821236

HAL Id: hal-02821236

<https://hal.inrae.fr/hal-02821236>

Submitted on 6 Jun 2020

HAL is a multi-disciplinary open access archive for the deposit and dissemination of scientific research documents, whether they are published or not. The documents may come from teaching and research institutions in France or abroad, or from public or private research centers.

L'archive ouverte pluridisciplinaire **HAL**, est destinée au dépôt et à la diffusion de documents scientifiques de niveau recherche, publiés ou non, émanant des établissements d'enseignement et de recherche français ou étrangers, des laboratoires publics ou privés.

A row of 3D rendered trees in yellow and green, some with conical tops and others with rounded tops, set against a white background.

Capsis annual workshop

UMR AMAP, Montpellier, 17th June 2008

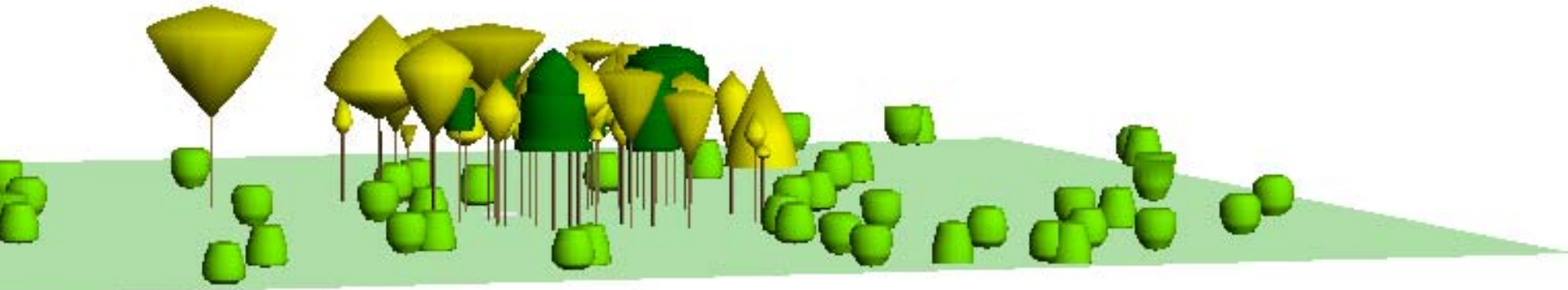
Fire Paradox Fuel Manager

A fuel manager for wildland fire modelling

*Isabelle LECOMTE; Éric RIGOLOT; Oana VIGY
UR Ecologie des Forêts Méditerranéennes, Avignon*



*François de COLIGNY; Sébastien GRIFFON
UMR AMAP, Montpellier*

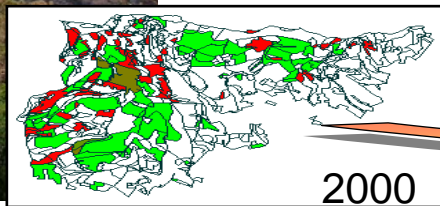


Scientific context

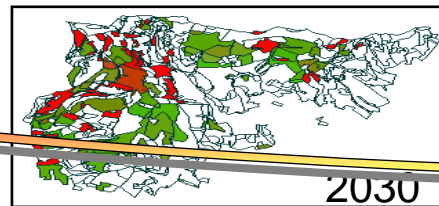
Fire behavior modelling

Post fire ecological effects assessment

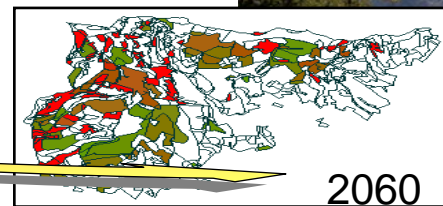
Fire regime integration in forest dynamics



2000



2030



2060



FIRE **PARADOX**

An Innovative Approach of Integrated Wildland Fire Management Regulating the Wildfire Problem by the Wise Use of Fire: Solving the Fire Paradox

- **Type:** 6th Framework Programme for R & D
- **Topic:** Integrated forest fire management
- **Instrument:** integrated project (research, development & dissemination)
- **Partnership:** 36 teams in 16 countries
- **Duration:** 48 mois, March 2006; February 2010



A 3D physically-based model for fire propagation FIRETEC

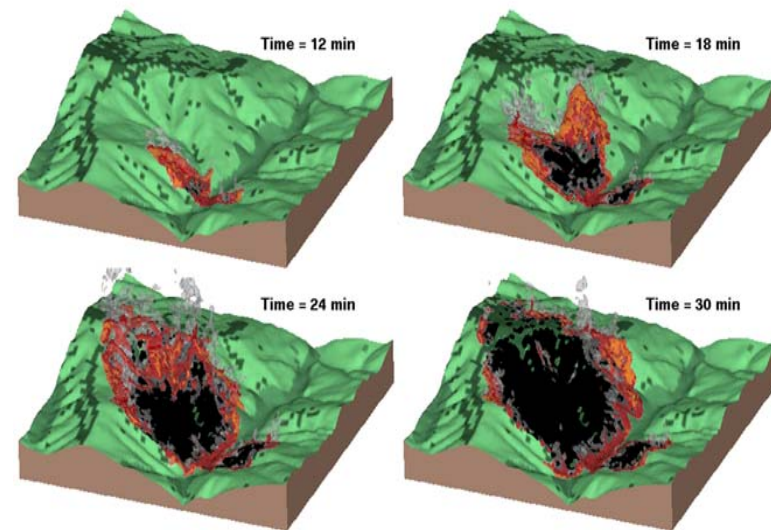
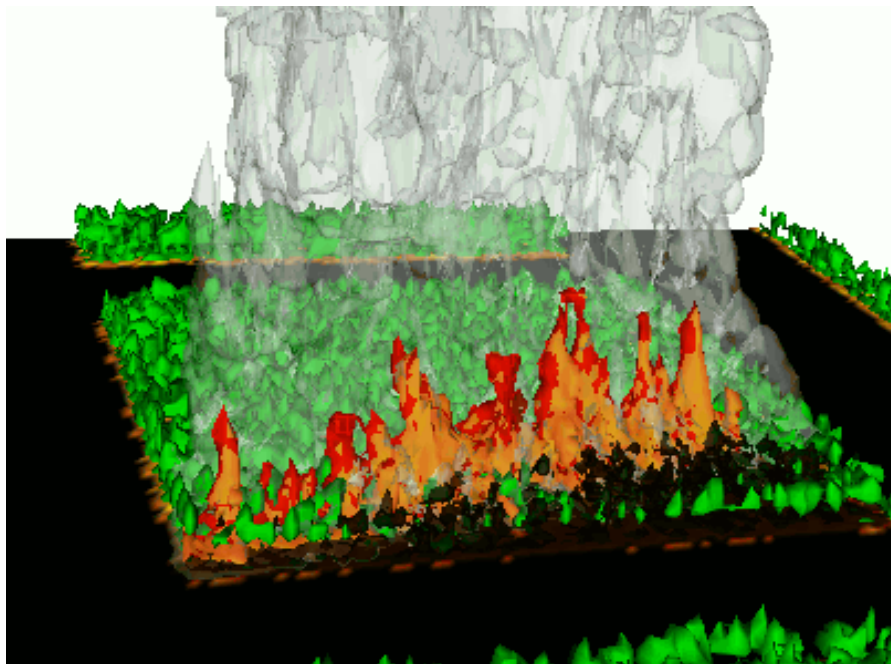
Representation of coupled critical physical processes of a wildfire

Explicit resolution (computation) of some processes (turbulence transport, radiation, ...)
and theoretical modeling of others (thermal degradation, combustion, ...)

It is a coupled atmospheric transport/wildfire behavior model (**HIGRAD/FIRETEC**)

Spatial resolution: 2 to 10 m **Domains:** 300 to 3000 m in (x,y), 600 to 1500 m (z)

Predicted **variables:** temperatures, flux, masses consumed, oxygen, ...



Fuel description and modeling

Fuel data requirements:

- Fine fuel particles characteristics (leaves, needles, twigs)
- Fuel density or **distribution in space of crown volume fraction**

Methods to assess particles volume fraction in crown

- Specific volume fraction measurements using « cube » method
- Architectural approach
- Terrestrial LIDAR



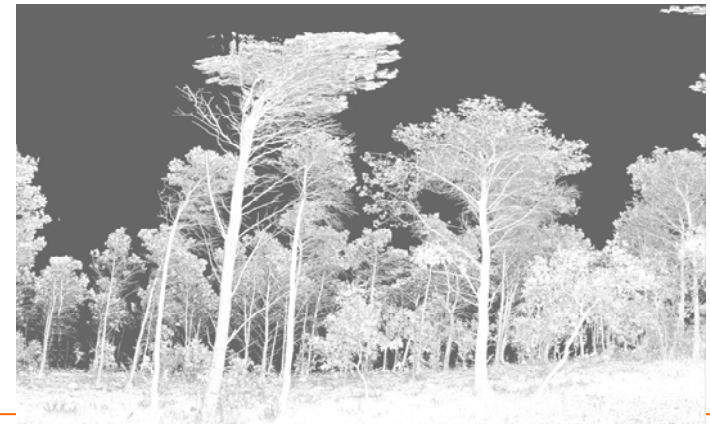
Cube method
(FIRESTAR)



Architectural approach
(INRA/CIRAD AMAP)



Lidar data



Fire behavior modeling process

Field measurements

Destructive sampling

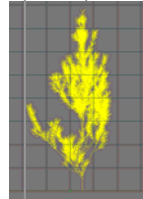
1) Particules



2) Crown

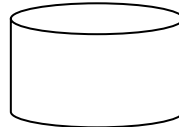


Architectural models

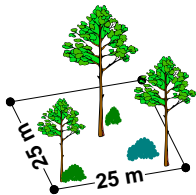


Fuel modeling

Data base
EuroForestFuels
(WLS)



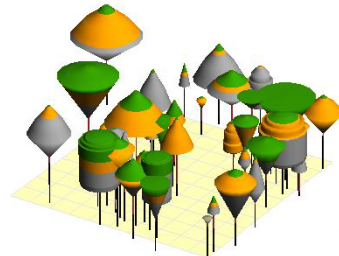
Stand description



Composition
Cover
Structure



Vegetation scene
Fire Paradox Fuel Manager

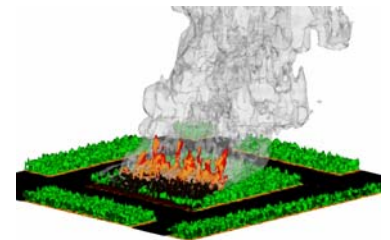


Capsis4

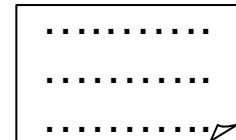


Fire modeling

Fire models
FireTec, FireStar3D




Data files





FIRE PARADOX FUEL MANAGER

A key application in the fire modeling process with the following functionalities:

- **Fuel manager:** user friendly software for input files generation of fuel complexes for fire behavior models
 - **Fire effects visualisation** on shrubs and trees
 - **Fuel succession visualisation** after fire occurrence
- 

FireParadox Scene Editor

Scene generation

Scene generation options

Scene editor

Scene generation

Database inventory: Browse

Detailed inventory: Browse

For viewing only For matching with database

From field parameters

From scratch

Length (m): Width (m):

Once the method chosen: then go to the scene editor page

The species list was correctly loaded 100%

Login Password Connection

EuroforetFuel
database
management

Pattern
editor

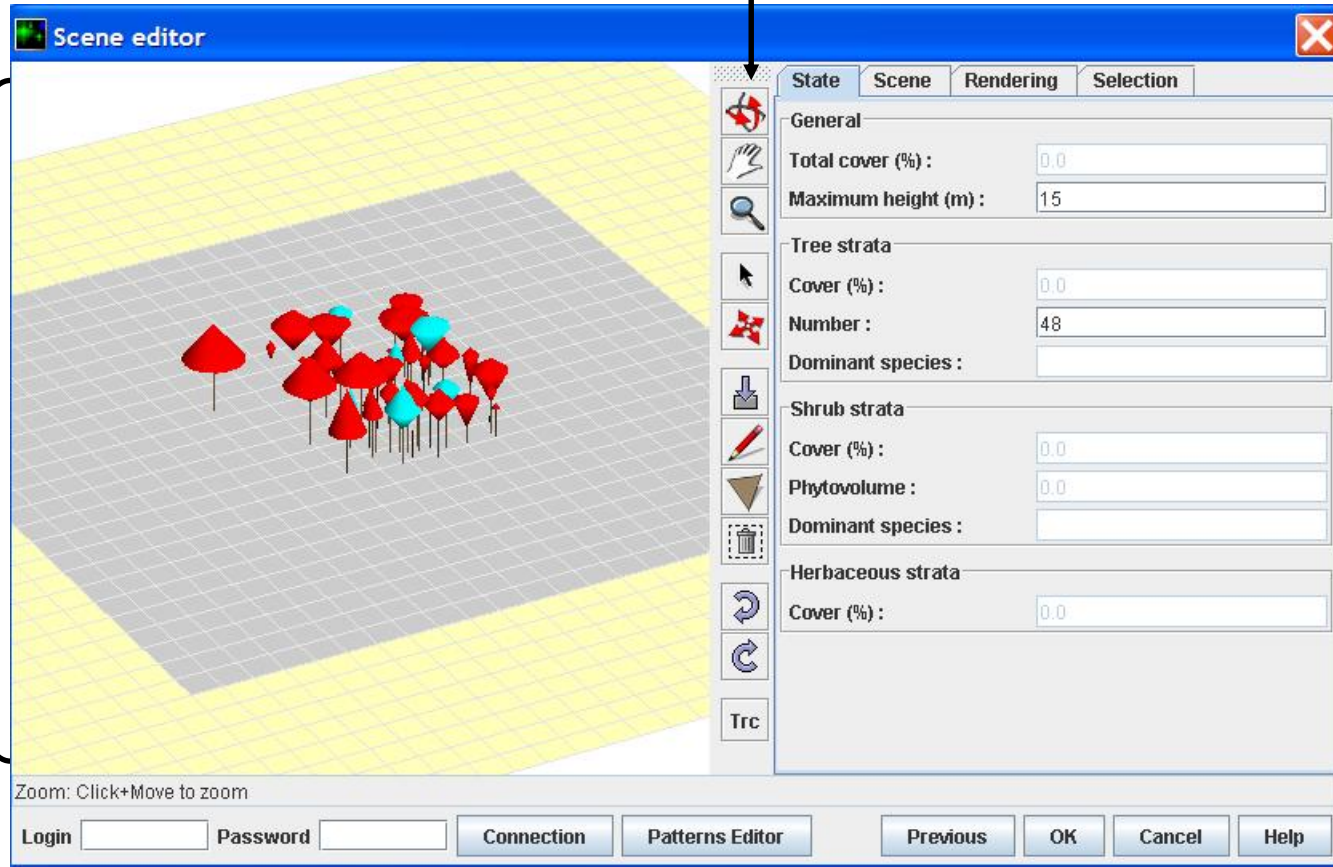
FireParadox Scene Editor

Scene edition

Tool bar

3D editor

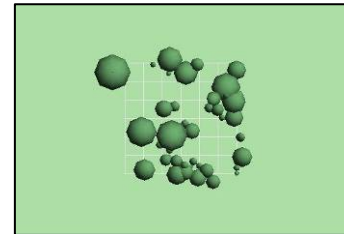
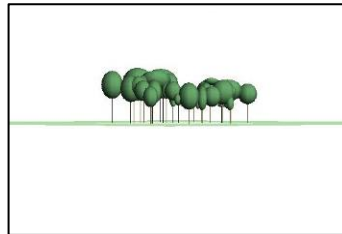
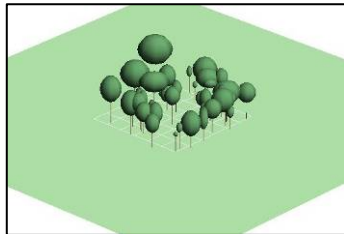
Real Time Panel



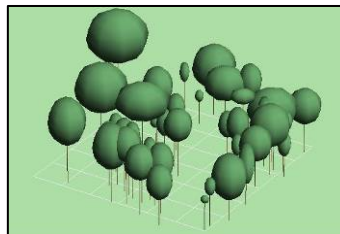
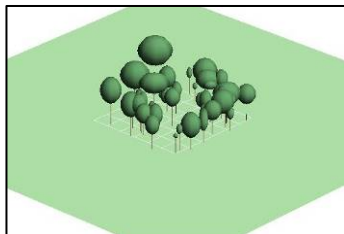
FireParadox Scene Editor

Scene edition : viewpoint motion

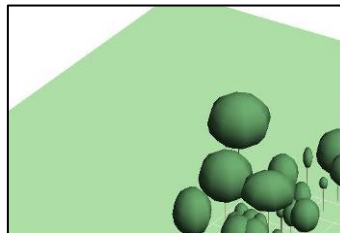
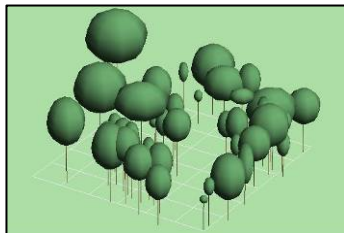
Orbit



Zoom

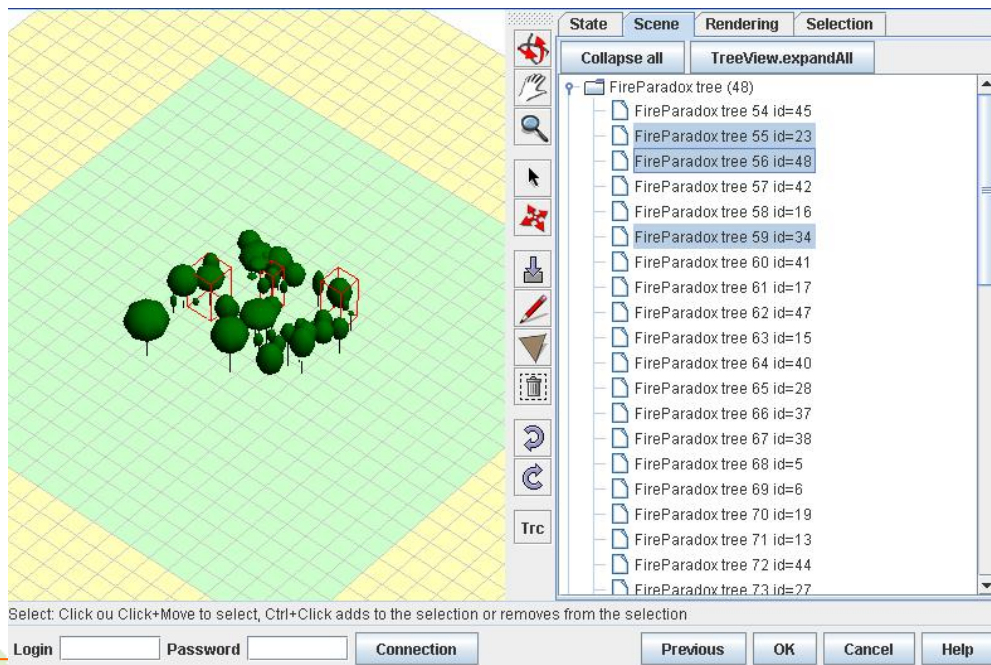
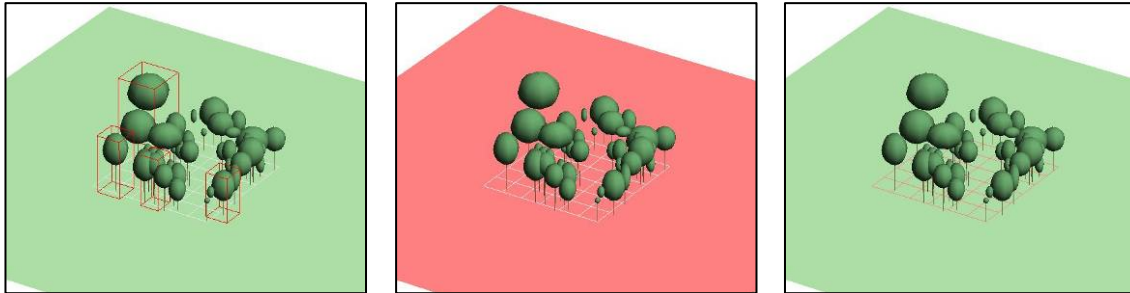


Pan



FireParadox Scene Editor

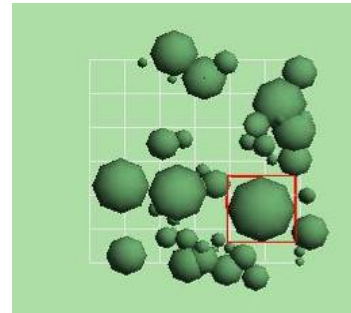
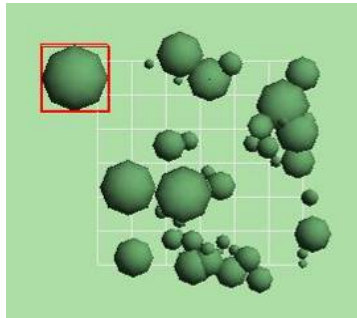
Scene edition : selection 



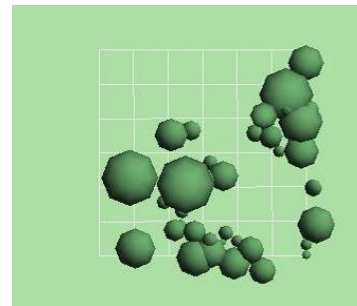
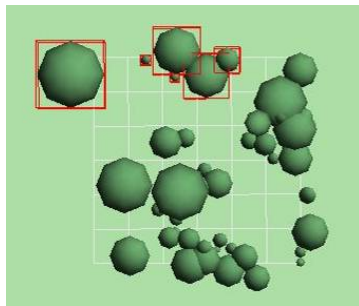
List of objects on the scene

FireParadox Scene Editor

Scene edition : Moving



Deleting

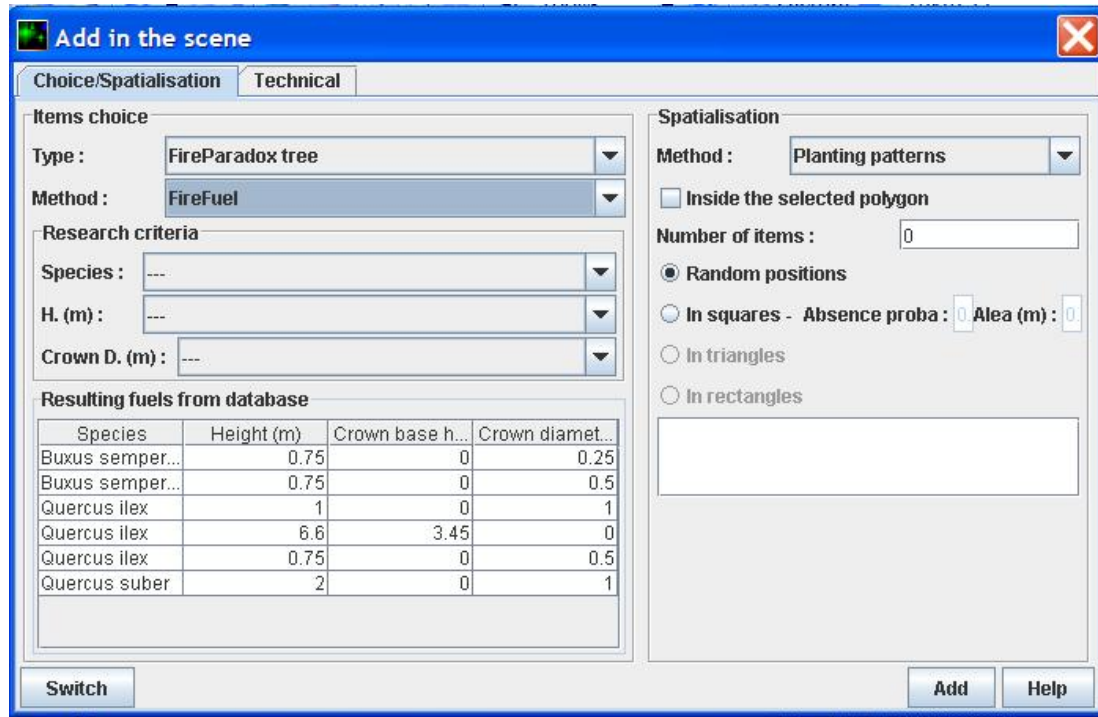


Undo/Redo



FireParadox Scene Editor

Scene edition : adding 



Add in the scene

Choice/Spatialisation Technical

Items choice

Type : FireParadox tree

Method : FireFuel

Research criteria

Species : ---

H. (m) : ---

Crown D. (m) : ---

Resulting fuels from database

Species	Height (m)	Crown base h...	Crown diamet...
Buxus semper...	0.75	0	0.25
Buxus semper...	0.75	0	0.5
Quercus ilex	1	0	1
Quercus ilex	6.6	3.45	0
Quercus ilex	0.75	0	0.5
Quercus suber	2	0	1

Spatialisation

Method : Planting patterns

Inside the selected polygon

Number of items : 0

Random positions

In squares - Absence proba : 0 Alea (m) : 0

In triangles

In rectangles

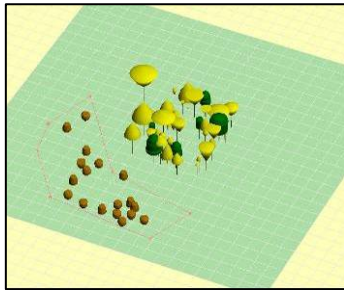
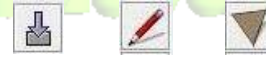
Switch Add Help

Fuels choice
from
EuroForestFuel
Database

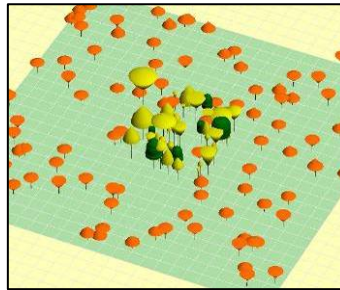
Planting
options

FireParadox Scene Editor

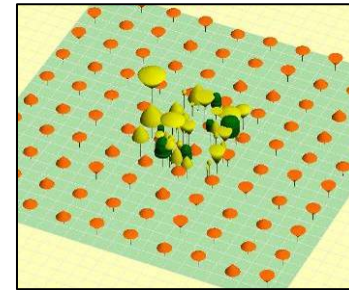
Scene edition : adding



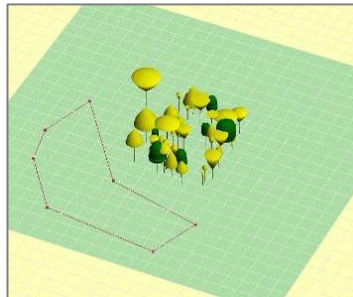
Within a polygon,
random



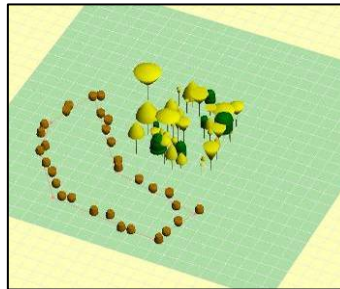
Within the scene,
random



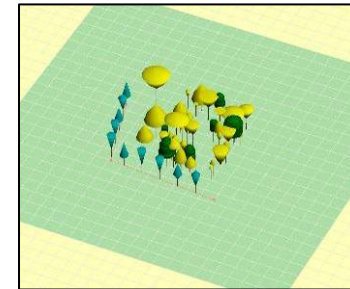
Within the scene,
with a square
pattern



Drawing a polygon



Along a polygon

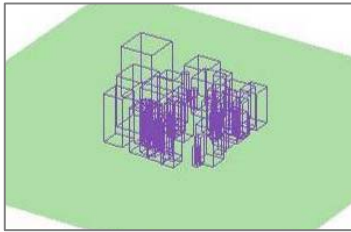


Along a line

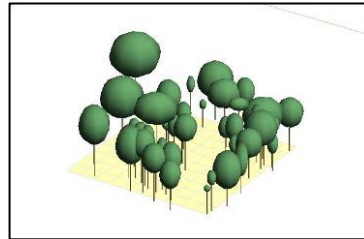
Interactive planting

FireParadox Scene Editor

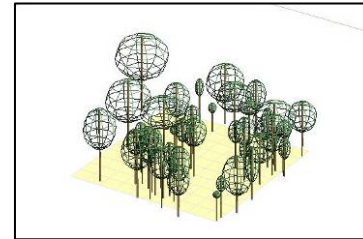
Scene edition : renderers



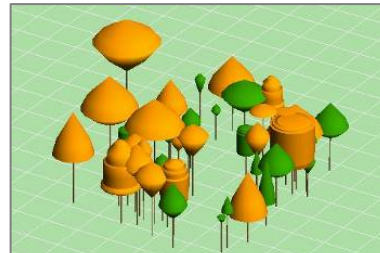
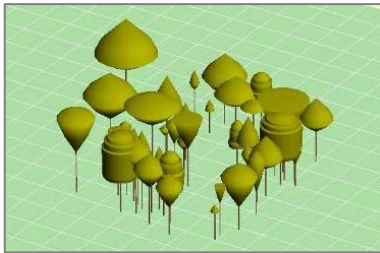
Boxes



Lollypops



Outlines



Patterns

FireParadox Scene Editor

Scene analysis

State Rendering Selection

General

Total cover (%) : 0.0

Maximum height (m) : 15

Tree strata

Cover (%) : 0.0

Number : 48

Dominant species :

Shrub strata

Cover (%) : 0.0

Phytovolume : 0.0

Dominant species :

Herbaceous strata

Cover (%) : 0.0

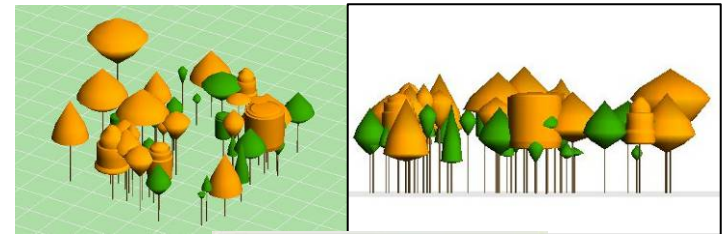
State Rendering Selection

Selection: Trees inspector

3 41

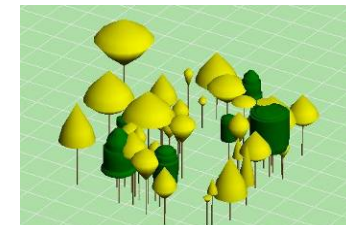
FireTree

Field	Value
AbsoluteMax	(1.67, -0.42, 1...
AbsoluteMin	(-6.68, -8.77, 0)
Age	0
CONIC	1
Cell	SquareCell_f12...
ClosedEnviron...	<input checked="" type="checkbox"/>
CrownBaseHeight	9.0
CrownColor	java.awt.Color...
CrownDiameter	8.35
CrownDiamete...	9.7976440948...
CrownKilledHei...	2.1137088485...
CrownRadius	4.175
CrownScorche...	4.2825351904...
CrownType	2
DBFuelId	PH_FuelId
Dbh	10.0
ExternalRef	null
FileId	3
HCMMax	8.0374240282...
HCMMin	5.6705145281...
Height	14.199999809...
Id	3
ItemId	37
Key	FireTrees
Marked	<input type="checkbox"/>
Max	(4.18, 4.18, 14...
Min	(-4.18, -4.18, 0)
Name	FireParadox tre...
PatternName	ex-14 - 33 - s8...
PlotRegistered	<input checked="" type="checkbox"/>
SPHERIC	2



Stratum	Colors
< 11.0	
>= 11.0	

By height

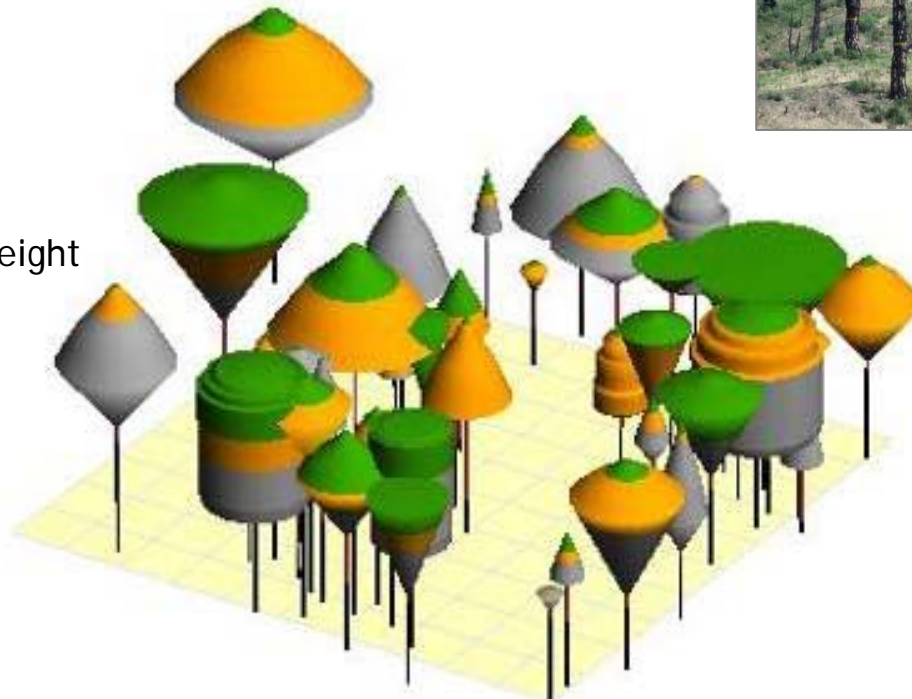
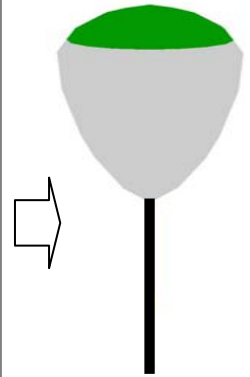
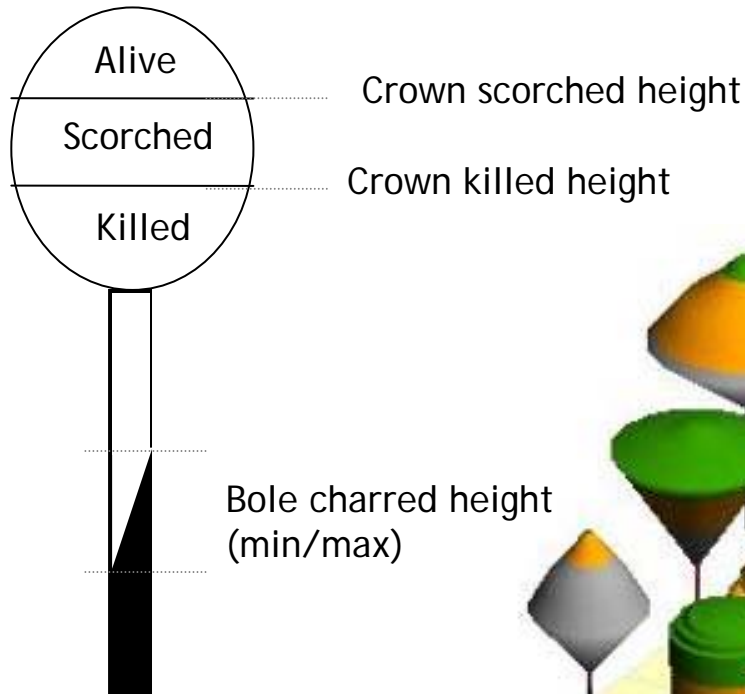


Species	Colors
Quercus ilex	
Pinus halepensis	

By species

FireParadox Scene Editor

Fire damage visualisation



EuroForestFuels Database Management

Searching data

Searching fuels in the EuroforestFuel database

Add in the scene

Choice/Spatialisation Technical

Items choice

Type : FireParadox tree

Method : FireFuel

Research criteria

Species : ---

H. (m) : ---

Crown D. (m) : ---

Resulting fuels from database

Species	Height (m)	Crown base h...	Crown diamet...
Buxus semper...	0.75	0	0.25
Buxus semper...	0.75	0	0.5
Quercus ilex	1	0	1
Quercus ilex	6.6	3.45	0
Quercus ilex	0.75	0	0.5
Quercus suber	2	0	1

Spatialisation

Method : Planting patterns

Inside the selected polygon

Number of items : 0

Random positions

In squares - Absence proba : 0 Alea (m) : 0

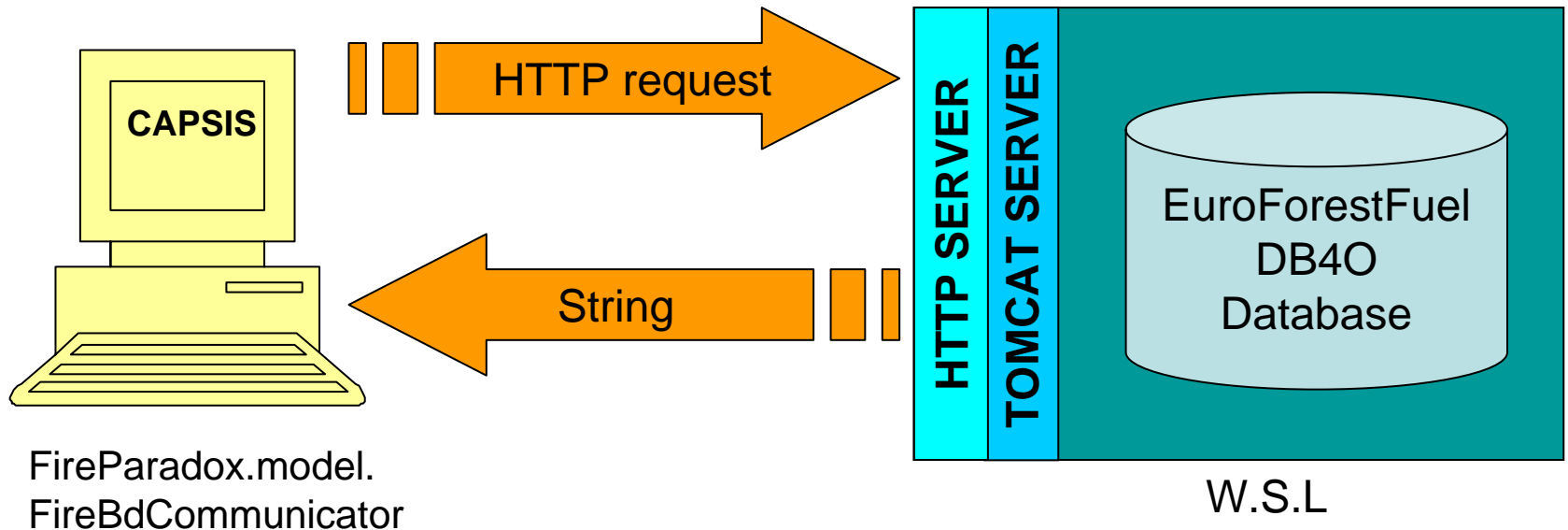
In triangles

In rectangles

Switch Add Help

EuroForestFuels Database Management

```
http://http://www.wsl.ch/WebFuel/par?numRequest=30
```



```
Shape:1153336;Plant:1156777;Buxus sempervirens;Virtual;0.75>null;0.25>null>null;0;1229055;  
Shape:1187063;Plant:1145567;Buxus sempervirens;Virtual;0.75>null;0.5>null>null;0;1229055;  
Shape:1191895;Plant:1166711;Quercus ilex;Measure;1.0>null;1.0>null>null;535535;0;  
Shape:1194851;Plant:1166981;Quercus ilex;Measure;6.0;3.45;2.0;2.0>null;535535;0;
```

EuroForestFuels Database Management

CAP SIS

fireparadox.model.fireBdCommunicator.class

<http://www.wsl.ch/WebFuel/par?numRequest=30&taxon=Quercus>

HTTP SERVER

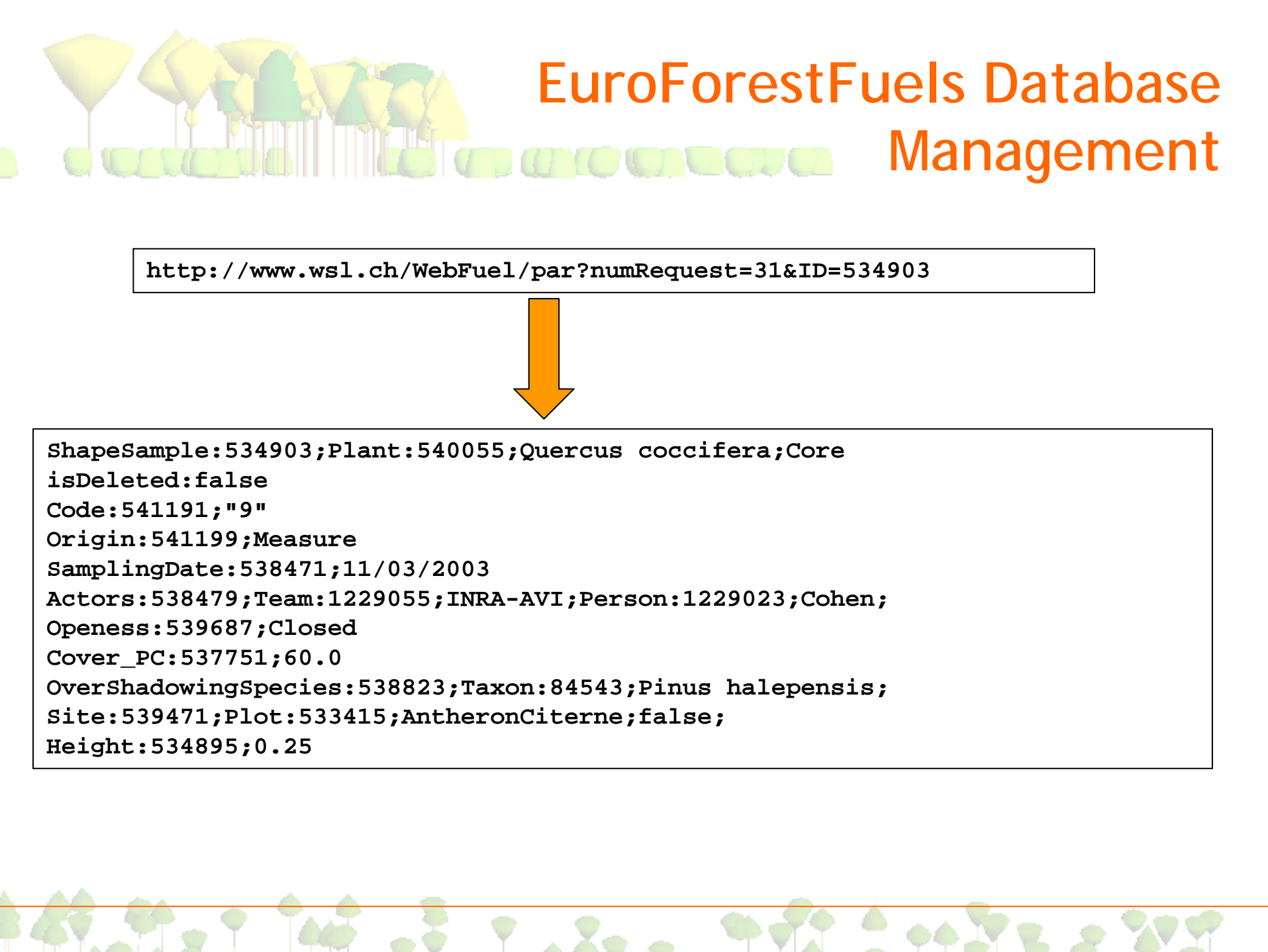
*fireparadox.dbfuel.web.adapters.
FuelManagerSelector.class*

TOMCAT SERVER

EuroForestFuel
DB4O
Database

```
Int nb = Integer.valueOf(request.getParameter("numRequest"));
String dbTaxon = request.getParameter("taxon");
public List<String> requestdb() {
    List<String> myResult = new ArrayList<String>();
    switch (nb) {
        . . .
        case 30: //retrieve fuel list
            myResult = queryShapes(dbTaxon);
            break;
        . . .
    }
}
private List<String> queryShapes(String taxon) {
    . . .
}
```

Shape:1191895;Plant:1166711;Quercus ilex;Measure;1.0;null;1.0;null;null;535535;0;
Shape:1194851;Plant:1166981;Quercus ilex;Measure;6.0;3.45;2.0;2.0;null;535535;0;



EuroForestFuels Database Management

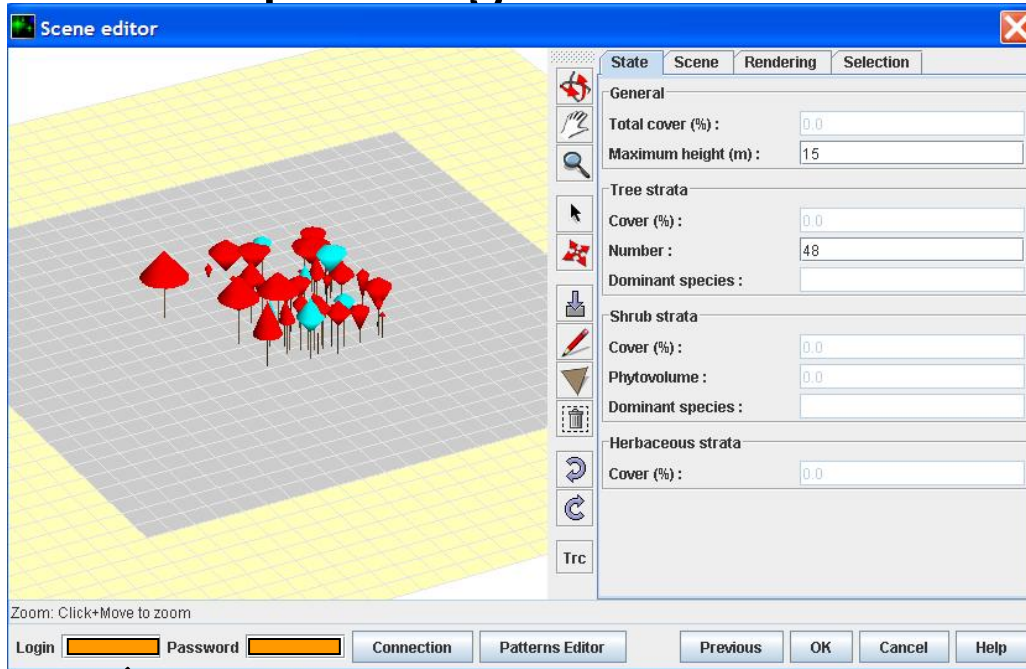
<http://www.wsl.ch/WebFuel/par?numRequest=31&ID=534903>



```
ShapeSample:534903;Plant:540055;Quercus coccifera;Core  
isDeleted:false  
Code:541191;"9"  
Origin:541199;Measure  
SamplingDate:538471;11/03/2003  
Actors:538479;Team:1229055;INRA-AVI;Person:1229023;Cohen;  
Openess:539687;Closed  
Cover_PC:537751;60.0  
OverShadowingSpecies:538823;Taxon:84543;Pinus halepensis;  
Site:539471;Plot:533415;AntheronCiterne>false;  
Height:534895;0.25
```

EuroForestFuels Database Management

Updating data



1. Super administrator
2. Administrator
3. User

EuroForest Fuels Database Management

Updating data

Particle parameters

Fuel
ID = 916936
Species = Quercus suber
Type = Layer
Height = 10.0

Legend
 Top
 Center
 Bottom
 Other
 Not set

Particle parameters
Particle : Twigs_6_25_INRA
Parameter : VF
Alive : 179.36430317848408
Dead : 0.0

Buttons: Add a particle, Add a parameter, Save in the database, Cancel, Help

Fuel edition (id=1118831 Quercus suber)

Team | 1 - Site description | **2 - Simple individual** | 3 - General comments

Species : Quercus suber
ID : "938"
Latitude (degree) : 0.0 Longitude (degree) : 0.0
Elevation (m) : 0.0

Virtual plant Measured plant

Shrub thicket
Fuel height (cm) : 600 Crown base height (cm) : 150
Shrub min width (cm) : 550 Max width (cm) : 650

Plant status

Isolated Dominant Subordinate Under tree

Openess : Tree cover by dominant species (%) : 0.0
Dominant species 1 :
Dominant species 2 :

Buttons: Save in database, Cancel, Help

EuroForestFuels Database Management

CAPIS

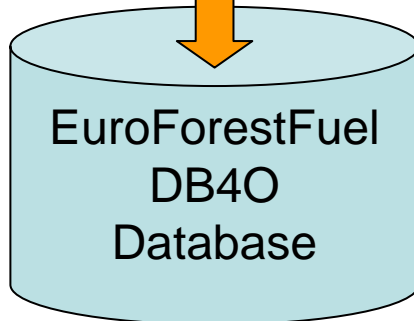
fireparadox.model.fireBdUpdater.class

```
http://www.wsl.ch/WebFuel/update?  
action=update&ID=123233&method=setName&value=INRA&  
valueType=java.lang.String
```

HTTP SERVER

*fireparadox.dbfuel.web.adapters.
FuelManagerUpdater.class*

TOMCAT SERVER

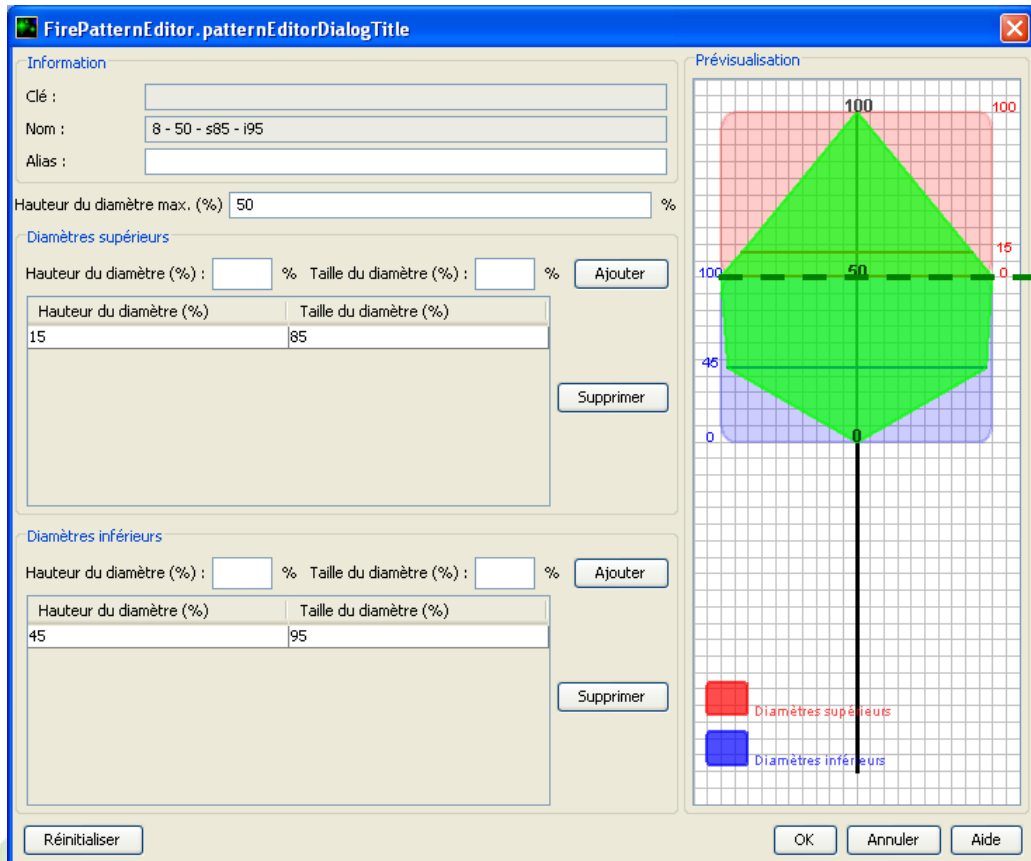


```
String dbaction = request.getParameter("action");  
String dbmethod = request.getParameter("method");  
String dbvalue = request.getParameter("value");  
String dbtype = request.getParameter("valueType");  
Long dbID = Long.valueOf(request.getParameter("ID"));  
Object obj = getDbItem(dbID);  
Class objType = obj.getClass();  
if (dbaction.compareTo("update") == 0) result = updateInDb();  
.  
.  
public List<String> updateInDb () {  
.  
.  
if (dbtype.compareTo("java.lang.String") == 0) {  
    objType.getMethod(dbmethod, String.class).  
        invoke(obj, dbvalue);  
}  
}
```

FireParadox Pattern Editor

What is a Pattern ?

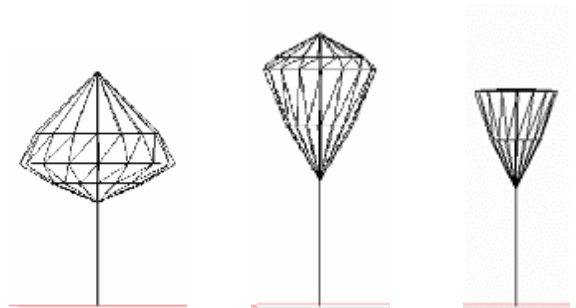
A crown shape defined by upper and lower diameters capable to be adapted according the height/width of the “central” maximum diameter



Upper diameters

Maximum diameter

Lower diameters



3 shapes of a single pattern with different max. diameter values

FireParadox Pattern Editor

Mapping Criteria with Pattern.

Table des patrons

Filtres

Taxons Resineous Strict Intervalle [,] [Milieu Fermé

Relations Critères/Patrons

+ Taxons	Intervalle	Milieu	Patrons	Ajouter
Resineous	[,]	Fermé	14 - 50 - s0 - s100 - ...	Supprimer
Resineous	[0.0 , 12.0[Fermé	1 - 50 - s60 - s50 - i...	Modifier
Resineous	[14.0 , 30.0[Fermé	8 - 50 - s85 - i95	

Prévisualisation

Diamètres supérieurs
Diamètres inférieurs

Client Réinitialiser

Liste des patrons OK Annuler Aide

Criteria based on :

- Taxons (mandatory)
- Intervals of heights
- Environment (opened/closed)

Liste des patrons

Liste des patrons

- 1 - 50 - s60 - s50 - i25 - i80 - i65
- 14 - 50 - s0 - s100 - s0 - i100
- cocci-15 - 50 - s60
- 3 - 40 - s30 - i75
- 10 - 50
- 11 - 50
- 13 - 50
- 5 - 50 - s50
- 6 - 50
- 8 - 50 - s85 - i95
- 9 - 50

Supprimer Patron
Editer Patron

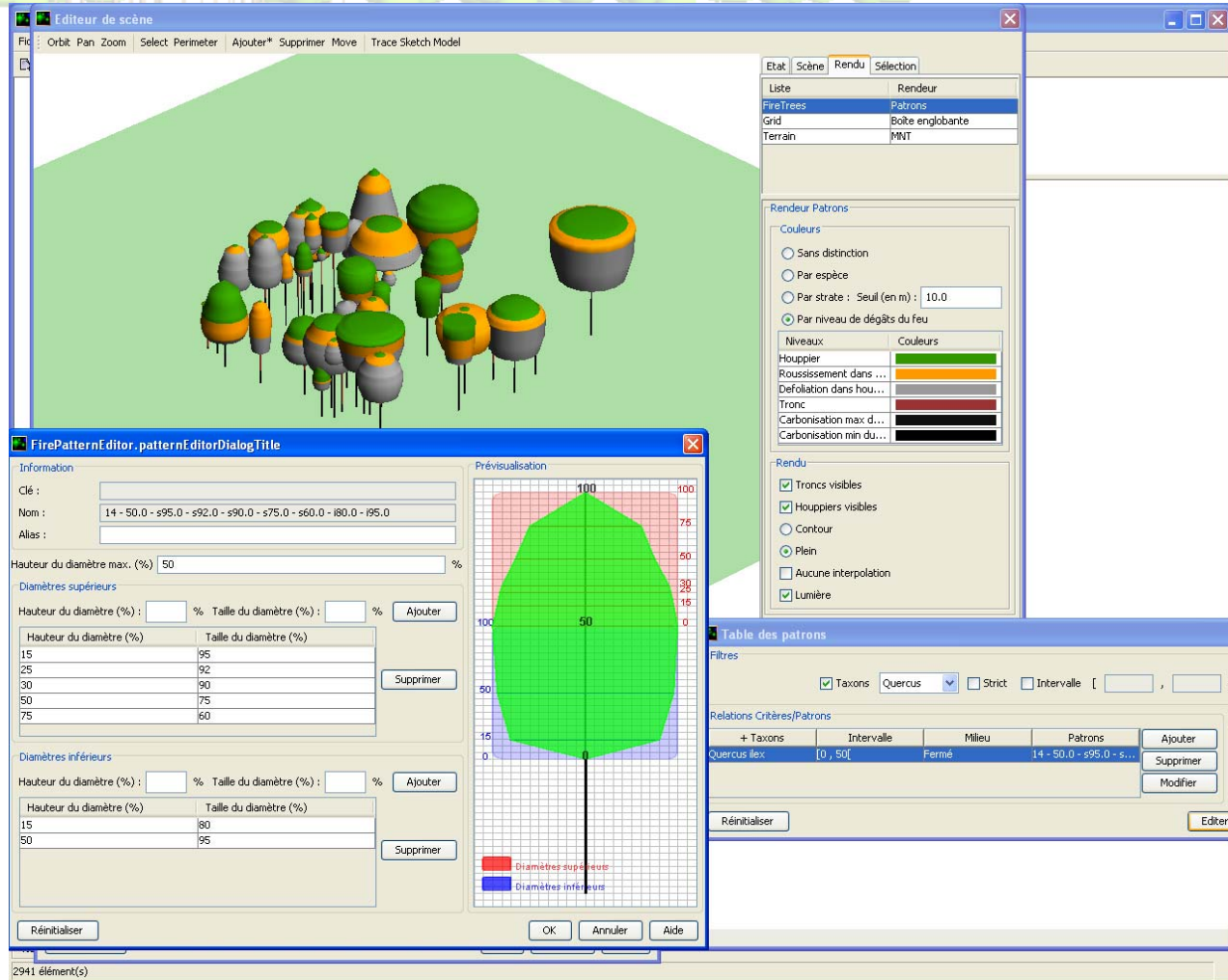
Prévisualisation

Diamètres supérieurs
Diamètres inférieurs

Réinitialiser

OK Annuler Aide

FireParadox Pattern Editor



The renderer finds the most representative pattern for a given tree and computes a revolution surface from the defined 2D profile

Export towards Fire model

- One of the main objectives of the FPFM is to automatically generate input files for 3D fire behaviour models from current vegetation scene.

Export Firetec Monofuel

Firetec Mesh

X axe scene size (m) : 120.0
Y axe scene size (m) : 60.0
X size for Firetec voxel (m) : 2.0
Y size for Firetec voxel (m) : 2.0
Z number of voxel : 10

1. Mesh calculation

X number of voxels : 60
Y number of voxels : 30
Z Total (m) : 23.030933967876265
Z size of voxels (m) :
1.5080309339678764
1.5562165377751336
1.6525877453896491
1.7971445568114222
1.989886972040452
2.2308149910767394
2.5199286139202854

Vegetation insertion

Including twigs

MVR by default (kg/m3) : 700
SVR by default (1/m) : 6000
Height threshold for tree layer/shrub layer (m) : 2
MC by default (tree layer) : 1
MC by default (shrub layer) : 0.7

2. Execute

Output files

treesrhof.dat : treesrhof.dat
tress.dat : sizescale.dat
treesmoist.dat : moisture.dat
treesfueldepth.dat : actualfueldepth.dat

Done

Control including on Ok **3. File generation** Cancel Help

Perspectives: forest dynamics

Management and climate change

