



**HAL**  
open science

## Lepidoptera. Chapter 11

Carlos Lopez-Vaamonde, David Agassiz, Sylvie Augustin, Jurate de Prins, Willy de Prins, Stanislav Gomboc, Povilas Ivinskis, Ole Karsholt, Athanasios Koutroumpas, Fotini A. Koutroumpa, et al.

► **To cite this version:**

Carlos Lopez-Vaamonde, David Agassiz, Sylvie Augustin, Jurate de Prins, Willy de Prins, et al.. Lepidoptera. Chapter 11. Alien terrestrial arthropods of Europe, 4 (2), Pensoft Publishers, 2010, BioRisk, 978-954-642-554-6 978-954-642-555-3. 10.3897/biorisk.4.50 . hal-02824288

**HAL Id: hal-02824288**

**<https://hal.inrae.fr/hal-02824288>**

Submitted on 6 Jun 2020

**HAL** is a multi-disciplinary open access archive for the deposit and dissemination of scientific research documents, whether they are published or not. The documents may come from teaching and research institutions in France or abroad, or from public or private research centers.

L'archive ouverte pluridisciplinaire **HAL**, est destinée au dépôt et à la diffusion de documents scientifiques de niveau recherche, publiés ou non, émanant des établissements d'enseignement et de recherche français ou étrangers, des laboratoires publics ou privés.

# Lepidoptera Chapter 11

Carlos Lopez-Vaamonde<sup>1</sup>, David Agassiz<sup>2,3</sup>, Sylvie Augustin<sup>1</sup>, Jurate De Prins<sup>4</sup>,  
Willy De Prins<sup>4</sup>, Stanislav Gomboc<sup>5</sup>, Povilas Ivinskis<sup>6</sup>, Ole Karsholt<sup>7</sup>,  
Athanasios Koutroumpas<sup>8</sup>, Fotini Koutroumpa<sup>8</sup>, Zdeněk Laštůvka<sup>9</sup>,  
Eduardo Marabuto<sup>10</sup>, Elisenda Olivella<sup>11</sup>, Lukasz Przybylowicz<sup>12</sup>, Alain Roques<sup>1</sup>,  
Nils Ryrholm<sup>13</sup>, Hana Šefrová<sup>14</sup>, Peter Šima<sup>15</sup>, Ian Sims<sup>16</sup>, Sergey Sinev<sup>17</sup>,  
Bjarne Skulev<sup>18</sup>, Rumen Tomov<sup>19</sup>, Alberto Zilli<sup>20</sup>, David Lees<sup>1,2</sup>

**1** INRA UR633 Zoologie Forestière, 2163 Av. Pomme de Pin, 45075 Orléans, France **2** Department of Entomology, The Natural History Museum, Cromwell Road, London, SW7 5BD, UK **3** The Garden House, Stafford Place, Weston-super-Mare, BS23 2QZ, UK **4** Entomology Section, Royal Museum for Central Africa, Leuvensesteeweg 13, B-3080 Tervuren, Belgium **5** Siskovo naselje 19, SI-4000 Kranj, Slovenia **6** Nature Research Centre, Institute of Ecology, Akademijos str. 2, Lt 08412 Vilnius, Lithuania **7** The Natural History Museum of Denmark, Zoologisk Museum, Universitetsparken 15, DK-2100 København Ø, Denmark **8** National Agricultural Research Foundation (NAGREF), Plant Protection Institute of Volos, PB 10303, Fytokou str, 38001 Volos, Greece **9** Department of Zoology, Fisheries, Hydrobiology and Apidology, Faculty of Agronomy, Mendel University in Brno, Zemědělská 1, CZ-613 00 Brno, Czech Republic **10** CBA - Centro de Biologia Ambiental, Faculdade Ciências Universidade de Lisboa, Campo Grande, edifício C2 - Lisboa, Portugal **11** Museu de Ciències Naturals de Barcelona (Zoologia), Passeig Picasso s/n, E-08003 Barcelona, Spain **12** Polish Academy of Sciences, Institute of Systematics and Evolution of Animals, Slawkowska 17, 31-016 Krakow, Poland **13** Department of Natural Sciences, University of Gävle, S-801 76 Gävle, Sweden **14** Department of Crop Science, Breeding and Plant Medicine, Faculty of Agronomy, Mendel University in Brno, Zemědělská 1, CZ-613 00 Brno, Czech Republic **15** Koppert Biological Systems, Komárňanská cesta 13, 940 01 Nové Zámky, Slovakia **16** Syngenta International Research Centre, Jealott's Hill, Bracknell, Berkshire RG42 6EY, UK **17** Zoological Institute RAS, Universitetskaya nab. 1, 199034 St. Petersburg, Russia **18** Brøndsted 411, DK-3670 Veksø, Denmark **19** University of Forestry, 10 Kliment Ohridski blvd., 1756 Sofia, Bulgaria **20** Museo Civico di Zoologia, Via U. Aldrovandi 18, I-00197 Rome, Italy

Corresponding author: Carlos Lopez-Vaamonde ([carlos.lopez-vaamonde@orleans.inra.fr](mailto:carlos.lopez-vaamonde@orleans.inra.fr))

---

Academic editor: David Roy | Received 31 August 2009 | Accepted 24 May 2010 | Published 6 July 2010

**Citation:** Lopez-Vaamonde C et al. (2010) Lepidoptera. Chapter 11. In: Roques A et al. (Eds) Alien terrestrial arthropods of Europe. BioRisk 4(2): 603–668. doi: 10.3897/biorisk.4.50

---

## Abstract

We provide a comprehensive overview of those Lepidopteran invasions to Europe that result from increasing globalisation and also review expansion of species within Europe. A total of 97 non-native Lepidoptera species (about 1% of the known fauna), in 20 families and 11 superfamilies have established so far in

Europe, of which 30 alone are Pyraloidea. In addition, 88 European species in 25 families have expanded their range within Europe and around 23% of these are of Mediterranean or Balkan origin, invading the north and west. Although a number of these alien species have been in Europe for hundreds of years, 74% have established during the 20<sup>th</sup> century and arrivals are accelerating, with an average of 1.9 alien Lepidoptera newly established per year between 2000–2007. For 78 aliens with a known area of origin, Asia has contributed 28.9%, Africa (including Macaronesian islands, Canaries, Madeira and Azores) 21.6%, North America 16.5%, Australasia 7.2% and the neotropics just 5.2%. The route for almost all aliens to Europe is via importation of plants or plant products. Most alien Lepidoptera established in Europe are also confined to man-made habitats, with 52.5% occurring in parks and gardens. We highlight four species in particular, *Diaphania perspectalis*, *Cacyreus marshalli*, *Cameraria ohridella* and *Paysandisia archon*, as the most important current economic threats.

### Keywords

biological invasion, introduction, pest species, Europe, Lepidoptera, globalisation

## 11.1 Introduction

Apart from the undoubted impact of climate change, various other facets of human activity, including the increasingly efficient means of transport in the last century, increased trade and globalisation, are having a dramatic effect on the composition of European faunas. Lepidoptera, as a mostly alate and largely phytophagous insect group, are particularly affected, not only by increased transport of the invasive species, but by increased trade in plants and stored plant products. In addition, many species are spreading to hostplants not used in their area of origin.

Lists of naturalized non-native Lepidoptera are already available for a number of European countries (Agassiz 1996a, Essl and Rabitsch 2002, Geiter et al. 2001, Karsholt and Nielsen 1998, Kenis 2005, Šefrová and Laštůvka 2005). In addition, several detailed case studies have been published on the process of invasion to Europe of several non-native Lepidoptera species (Nash et al. 1995, Šefrová 2001, Šefrová 2002a, Šefrová 2002b, Šefrová and Laštůvka 2001, Whitebread 1990). The first list of terrestrial invertebrate species alien to and within Europe included 272 Lepidoptera species, of which 122 were alien to Europe, 139 alien to countries within Europe, and 11 of cryptogenic origin (DAISIE 2008). We substantially revise and update this list here, in the first comprehensive review of known naturalized non-native Lepidoptera known to Europe.

We divided species into two categories:

1. Naturalized exotic species (originating from a continent other than Europe) whose first introduction into Europe appears to be a direct or indirect (deliberate or accidental) result of human activity (Table 11.1). This includes now well known alien lepidoptera such as the Neotropical castniid moth *Paysandisia archon* (Burmeister,

1880) or the South African lycaenid butterfly *Cacyreus marshalli* (Butler, 1898). We also considered in this category species of unknown origin (cryptogenics) such as the leaf-mining moth *Phyllonorycter platani* (Staudinger, 1870). It is worth noting that we also included here species introduced into confined environments like greenhouses which while not apparently spreading of their own accord, have been introduced with their hostplants, with the potential to spread due to horticultural trade. For instance, 11 species of aquatic Pyralidae have been introduced accidentally by man from Asia and North America into Europe, mostly as contaminants of plants. Current climate makes their establishment in the wild unlikely, but global warming could allow their establishment in the near future.

2. European species spreading throughout the continent as a result of human activity (Table 11.2). This category includes the invasive leaf-mining moth *Cameraria ohridella* Deschka and Dimić, 1986, now understood to be Balkan in origin (Valade et al. 2009). It is worth noticing that although many aliens are highly invasive our review also includes naturalised aliens that are not necessarily invasive such as the saturniid moth *Samia cynthia* (Drury, 1773).

We excluded all the following cases, here giving examples:

- i) Species showing clear range expansions/contractions at a country level, which are known to follow global climate change trends (Warren et al. 2001). The butterfly *Colotis evagore* (Klug, 1829) in Spain (Fric, 2005), the processionary pine moth *Thaumetopoea pityocampa* (Denis & Schiffermüller, 1775), in central Europe (Battisti et al. 2005) and several British butterfly species (Asher et al. 2001) are classical examples of this phenomenon. However, it must be noted that *T. pityocampa* has apparently been introduced through human activity from continental Italy to Sardinia (Luciano et al. 2007).
- ii) Naturally-expanding species known as migrants which have established without clear human assistance, such as the choreutid *Tebenna micalis* (Mann, 1857) in Azores (Karsholt and Vieira 2005) and the geometrid *Peribatodes secundaria* (Denis & Schiffermüller, 1775) in Great Britain (Kimber, 2008) as well as rare vagrants that may or may not sporadically naturalize, such as *Acontia crocata* Guenée, 1852 in France (Letellier, 2004); *Pardasena virgulana* (Mabille, 1880) in Great Britain (Honey, 1994) and *Gelechia sabinellus* (Zeller, 1839), *Eccopsis effractella* Zeller, 1848 and *Zophodia grossulariella* (Hübner, 1809), all recently recorded from Great Britain (Agassiz 1978a, Agassiz 1996b, Roche 1982).
- iii) New records of species probably overlooked in particular countries for which there is no clear evidence of range expansion. For instance, in Great Britain the presence of *Bucculatrix ulmifoliae* Hering, 1931 and *Ocnerostoma* spp. (Heath and Emmet 1996, Langmaid et al. 2007).
- iv) Deliberate translocations of species between European countries, such as the introduction of the butterflies *Araschnia levana* (Linnaeus, 1758) (Frohawk, 1940), *Ma-*

*culinea arion* (Linnaeus, 1758) (Thomas et al. 2009) and *Lycaena dispar* (Haworth, 1803) (Ford, 1945) into Great Britain. These translocations result from solitary enthusiasts or are for conservation management purposes including the reintroduction of extinct species, but have nothing to do with our subject of biological invasion, essentially the aspects associated with increased globalisation.

- v) Species once apparently established but now extinct (e.g. in Great Britain, the blastobasid *Blastobasis phycidella* (Zeller, 1839) and the oecophorid *Euclementia woodiella* (Curtis, 1830) (Emmet 1988, Koster and Sinev 2003)
- vi) The large number of living display species (this is the case of butterfly houses), unless these species are either establishing in the wild, or there is evidence they have become greenhouse pests (we have no examples). Nevertheless, we highlight the risks involved in importation of butterflies for butterfly houses and for a new practice of wedding releases.

Finally, the introduction of exotic host plants by man has indirectly allowed several lepidopteran species to expand their distribution range. We consider as alien species *Stigmella speciosa* Frey, 1857, *Caloptilia rufipennella* (Hübner, 1796) and *Phyllonorycter geniculella* (Ragonot, 1874), all feeding on *Acer pseudoplatanus* in northern Europe; *Stigmella suberivora* (Stainton, 1869) feeding on *Quercus ilex* in Great Britain; *Eupithecia phoeniceata* (Rambur, 1834) feeding on *Juniperus* and various Cupressaceae in Belgium and Great Britain, *Cydia grunertiana* (Ratzeburg, 1868) in Belgium, Denmark and Sweden; *C. illutana* (Maslov, 1988) and *C. pactolana* (Zeller, 1840) feeding on *Larix*, the last two in Great Britain; *Thera cupressata* (Geyer, 1831), feeding on imported *Abies* in Sweden and Cupressaceae in Great Britain, and *Lithophane leautieri* (Boisduval, 1829) on Cupressaceae cultivars in Great Britain. *Polychrysis moneta* (Fabricius, 1787) started to spread as early as 1891 in Europe, possibly as a result of rise in popularity of ornamental hostplants such as *Delphinium* in gardens (Agassiz, 1996a). Other well known examples of species which have followed the invasion of their host plants are the milkweed butterflies, *Danaus plexippus* (Linnaeus, 1758) and *Danaus chrysippus* (Linnaeus, 1758). The larvae of both species feed on ornamental and invasive milkweeds (Apocynaceae) which have been introduced in some Macaronesian islands and the Iberian Peninsula (Baez, 1998).

We summarise the relative importance of naturalized alien invasives by family, in relation to their proportion in the relatively well known European fauna, finding great disparities in their prevalence.

## 11.2 Diversity of alien lepidopteran species

Lepidoptera is one of the largest insect orders, with around 175,000 described species in 128 families and 47 superfamilies (Kristensen and Skalski 1999, Mallet 2007). About 9,428 native species in 83 families and 31 superfamilies have been recorded in

Europe (Karsholt and Kristensen 2003). A total of 97 non-native Lepidoptera species, in 20 families and 11 superfamilies have established so far in Europe (Table 11.1). Our analysis reveals that there is a significant correlation between the number of alien species and the number of native species per family (Spearman's rho correlation:  $r = 0.48$ ,  $P < 0.001$ ). In addition, 88 European species in 25 families have expanded their range within Europe and many of these are of Mediterranean origin, invading northern and western areas of Europe (Table 11.2).

The 20 families which contain alien species to Europe are: Pyralidae (30 species), Tortricidae (10), Gracillariidae (8), Tineidae (7), Noctuidae (6), Gelechiidae (6), Blastobasidae (5), Yponomeutidae (4), Oecophoridae (4), Cosmopterigidae (3), Saturniidae (3), Pterophoridae (2), Nymphalidae (2) and Bucculatricidae, Agonoxenidae, Lycaenidae, Geometridae, Arctiidae, Nolidae and the alien family Castniidae, each with one species (Table 11.1).

**Agonoxenidae:** Sixteen species of agonoxenids are native to Europe. The Asian species *Haplochrois theae* (Kusnezov, 1916) represents the only alien. During the 20<sup>th</sup> century this was a serious pest on tea plantations in Georgia and to a lesser degree, in the Krasnodar Territory of Russia (Sinev, 1994).

**Arctiidae:** One hundred and one species of arctids are native to Europe but only one species, the North American Fall Webworm, *Hyphantria cunea* (Drury, 1773), is alien to the region. The larvae are highly polyphagous, feeding on hundreds of different species of deciduous trees on which they form conspicuous webbed nests in late summer and autumn.

**Blastobasidae:** Only 41 species of native blastobasid moths have been recorded in Europe, a large evolutionary radiation of which 26 species occur in Madeira (Karsholt and Sinev 2004). However, the number of alien species in this family (five) is relatively high, mainly because the larvae feed usually on dead organic matter. Some species, such as *Blastobasis lacticolella* (Rebel, 1940) are pests of stored foodstuffs. Interestingly, all alien Blastobasidae appear to have colonized continental Europe (mostly Great Britain and/or mainland Portugal) from Madeira, presumably with the import of ornamental plants. The common species *B. adustella* Walsingham, 1894 (originally described as a form of *B. lignea* Walsingham) (Sinev, 2007) is another example. However, *B. adustella* has widely been treated, erroneously, as a synonym of the Madeira endemic species *B. vittata* Wollaston, 1858. Although there are records attributed to *B. vittata* on the internet, including from the British Isles, there are no unambiguously identified instances of the introduction of this species outside Madeira at present.

**Bucculatricidae:** There are 53 native bucculatricids known in Europe. One macaronesian species, *Bucculatrix chrysanthemella* (Rebel, 1896), was recently introduced from the Canaries into Italy and France, where it seems to have established populations. This species has also recently been recorded from Finland, at which latitudes it seems unlikely to become established (Siloaho, 2008). *B. chrysanthemella* attacks Paris Daisy (*Argyranthemum frutescens*), an economically important ornamental crop in some parts of Europe.

**Castniidae:** This family has no native species in Europe. The majority of castniid moths are Neotropical, while some species are also found in Australia and South-east



Asia. The Neotropical *Paysandisia archon* is the only alien castniid known to occur in Europe and is currently spreading along the Mediterranean coast attacking a wide range of palm species. The castniid *Riechia acraeoides* (Guérin-Méneville, 1832) is one of numerous sporadic adventives included in the previous list (DAISIE 2008) that we discount here.

**Cosmopterigidae:** There are 79 species of cosmopterigids native to Europe, with three species considered as aliens. Two of these are African species that feed on *Acacia* in Malta. The larvae feed internally on the leaves, seeds and stems of their hostplants. There is no evidence that *Cosmopterix pulchrimella* Chambers, 1875, recently established in Cornwall, Great Britain, arrived there directly through human agency.

**Gelechiidae:** There are 697 species of gelechiids known to occur in Europe. The larvae of most species are concealed feeders on plant tissues, many of them feeding internally in seed heads and fruits, some mining and even producing galls. Six alien gelechiids are known from Europe, among them major agricultural pests such as the Tomato Leafminer *Tuta absoluta* (Meyrick, 1917), the cosmopolitan Angoumois Grain Moth *Sitotroga cerealella* (Olivier, 1789), which attacks stored whole cereal grains, and the Pink Bollworm *Pectinophora gossypiella* (Saunders, 1844), whose larvae bore into the flowers and seeds of cotton.

**Geometridae:** There are 1,024 species of geometrids native to Europe, but only one non-native species appears to have naturalized in Europe. This is *Pseudocoremia suavis* (Butler, 1879), an endemic geometrid to New Zealand (Berndt et al. 2004), which was recorded on five separate occasions in Cornwall in 2007 (James 2008, Skinner 2009), suggesting establishment in the wild. This species, polyphagous on various gymnosperms, represents a potential risk to European conifer forests.

**Gracillariidae:** There are 249 species of native gracillariids known in Europe and eight alien species have been recorded. Among these are pests of economic importance, such as the Citrus Leafminer *Phyllocnistis citrella* Stainton, 1856.

**Lycaenidae:** One hundred and thirty-six species of lycaenids are native to Europe. The South African *Cacyreus marshalli* is one of the few butterflies which are naturalised aliens in Europe (see also under Nymphalidae). This is a pest of cultivated *Pelargonium* plants, mainly in Mediterranean region but it was found to be breeding in Great Britain in 1997 (Lewes, East Sussex), where it became temporally established in greenhouses until May 1998 but was eradicated (Holloway, 1998).

**Noctuidae:** This is the most species-rich family of Lepidoptera in Europe, with over 1,435 native species. Six alien noctuids have been recorded so far, including some major agricultural pests such as *Chrysodeixis eriosoma* (Doubleday, 1843) and *Spodoptera litura* (Linnaeus, 1758). However, on a cautionary note, these genera are known to have strong migratory tendencies. Indeed we may never know, due to lack of sufficient historical records, when or whether certain noctuids arrived as invasives to Europe or by artificial agency. One good example of this is *Araeopteron ecphaea* (Hampson, 1914) (type locality Nigeria). It is also interesting to note the African and Austral-Oriental fern-feeding species *Calloplistria maillardi* (Guenée, 1862) seems to have been accidentally imported with *Nephrolepis* ornamental ferns, but this species has five subspecies and the precise origin

of the introduced individuals is unknown. Some records of *Chrysodeixis acuta* (Walker, 1858) could also represent misidentifications of *C. chalcites* (Esper, 1789). Following our exclusion criteria, we have not included singleton records, for example of *Acontia crocata* Guenée, 1852, a specimen of which was collected in Irais (Deux-Sevres), France (Letellier, 2004), possibly resulting passively from a plant import from SE Asia (Hacker et al. 2008).

**Nolidae:** Thirty-five species of nolidids are native to Europe, but only one exotic species has repeatedly been recorded within the region, the Spotted Bollworm, *Earias vittella* (Fabricius, 1794). The larva of this species feeds on several plants of the family Malvaceae, in particular Okra (*Abelmoschus esculentus*) pods, *Gossypium* (it is one of the most important pests of cotton) and *Hibiscus*. It has been found as a vagrant in Great Britain and seems to also be present in southern Spain (Nash, 2003). Its establishment needs to be confirmed.

**Nymphalidae:** There are 239 species of nymphalid butterflies native to Europe. Two non-native danaine species, the Monarch butterfly *Danaus plexippus* and the Plain Tiger *D. chrysippus* have established themselves in the Macaronesian islands and Iberian Peninsula. We have included both species despite them being well known migrants because their introduction and establishment in Europe has followed the invasion and establishment in Europe of their Apocynaceae host plants (*Asclepias curassavica*, of Neotropical origin and *Gomphocarpus fruticosus* of Afrotropical origin). Thus, the Monarch's range has greatly expanded during the 19th and 20th centuries from North America and now encompasses numerous Atlantic, Pacific and Indian Ocean islands and Australia. A number of hypotheses have been developed to explain this great range expansion (Vane-Wright 1993).

**Oecophoridae:** There are 120 native species of oecophorids in Europe. Only four alien oecophorids are established in the region, three of which feed on dead plant material.

**Pterophoridae:** There are 166 native pterophorids known to Europe. Two species, *Megalorhipida leucodactylus* (Fabricius, 1794) and *Lantanophaga pusillidactylus* (Walker, 1864) are known to be alien to Europe. *M. leucodactylus* has a circum-tropical distribution and has established populations in Sicily (Bella and Ferrauo 2005) and Israel. It has also been recorded in Spain, but its presence there needs confirmation (Gielis, pers. comm.). The larvae feed on Amaranthaceae, Cucurbitaceae, Goodeniaceae, Leguminosae, Nyctaginaceae, Rosaceae and Asteraceae (Vargas, 2007). The Lantana Plume Moth *L. pusillidactylus* is also a pantropical species whose origin, as for *M. leucodactylus*, is not clear. This species has been introduced with its Verbenaceae hostplant (which is of neotropical origin), *Lantana camara*, into Spain, Portugal and southern Italy (Aguiar and Karsholt 2006, Bella and Marchese 2007, King 2000). The moth is used as the biocontrol agent against this plant, itself an invasive in many parts of the world.

**Pyraloidea (Pyralidae and Crambidae):** This superfamily has 898 native species known in Europe. Pyraloidea also has the highest number of species (30) alien to Europe. This is probably due to the high number of alien crambid pyrales that have larvae feeding on submerged and floating aquatic plants used in aquariums and ponds (11 species) as well as cosmopolitan pests that feed on stored products (seven species). These invasives include the North American wax moth *Vitula edmandsii* (Packard, 1865), whose larvae damage the combs of honeybee and bumblebee nests.



**Saturniidae:** Seven saturniids are native to Europe. Three Asian species have deliberately been introduced into Europe for silk production, but have naturalized from escapes. This family is also very popular among amateur breeders and sometimes there are reports of adult moths of a wide number of species in urban areas.

**Tineidae:** There are 262 species of native tineids in Europe and seven alien species have also been recorded to the region. At least five of these feed on stored products, cloths, and detritus, such as the Common Clothes Moth (*Tineola bisselliella* (Hummel, 1823)), whose larvae feed on clothing and natural fibres.

**Tortricidae:** About 977 species of tortrix moths have been recorded as native to Europe. Among the 10 alien species recorded to Europe, there are some economically important pests, in particular of apple trees, for example the oriental fruit moth (*Grapholita molesta* (Busck, 1916)) and the light brown apple moth *Epiphyas postvittana* (Walker, 1863). Larvae of the latter species are not easily distinguished from the larvae of other tortricid leafrollers; only DNA-based testing appears to work reliably for identification. Interestingly, half of the tortricids recorded as alien to Europe (five out of 10 species) are specialists on *Cedrus* and have been introduced into southern France, where plantations of these trees are common.

**Yponomeutidae:** There are 113 species of ermine moths native to Europe, with four alien species having been recorded. The larvae tend to form communal webs, and some species are agricultural forestry pests, such as the Arborvitae Leafminer, *Argyresthia thuiella* (Packard, 1871) and *Prays citri* (Millière, 1873), a well-known *Citrus* pest in the Mediterranean region. Two North American leafminers of the genus *Argyresthia* attack Cupressaceae in Europe.

In our analysis, it is interesting that we found a similar number of alien species to Europe (Table 11.1) as species that have expanded their range within Europe due to human activity (Table 11.2). Indeed, there is a significant correlation between the number of alien species per family to Europe and the number of alien species per family within Europe (Spearman's rho correlation:  $r = 0.39$ ,  $P = 0.044$ ). However, several families exhibit some species which have expanded their range within Europe, yet have very few or no recorded aliens to Europe. For instance, strikingly, Geometridae features only one species alien to Europe within a fauna of 1,024 species, a number of which are known migrants, whereas as many as 11 species have been recorded invading other countries within Europe (Table 11.2). The North American sterrhine geometrid *Idaea bonifata* (Hulst, 1887) has been intercepted several times with imports of dried plant material but, as far as known, is not yet established in Europe (Martinez and Coutin 1985).

The absence of alien species within other species-rich families, such as Coleophoridae (533 spp.), Nymphalidae (239 spp.), Psychidae (231 spp.) Nepticulidae (242 spp.) and Sphingidae (39 spp.) is also notable. In spite of the known high mobility of the last family, several exotic species (i.e. the American *Sphinx drupiferarum* Smith, 1797, *Agrius cingulatus* (Fabricius, 1775) and the African *Polyptychus trisecta* (Aurivillius, 1901)) have been recorded (sometimes repeatedly) within the region, with no confirmed establishment (Marabuto 2006, Pittaway 1993, Waring et al. 2003).

### 11.3 Temporal trends

The precise date of arrival is not known for two species. An analysis of the 95 species for which the date of the first record in Europe is known shows that the arrival of alien Lepidoptera has dramatically accelerated during the second half of the 20th century (Figure 11.2). This trend is still increasing, with an average of 1.9 alien Lepidoptera newly established per year in Europe between 2000 and 2007 (Figure 11.2). This average is twice that during the period 1975 to 1999 (1.1 species per year). The same trend has been observed for all groups of alien terrestrial invertebrates analysed together (Roques et al. 2008). This temporal trend might be due to the acceleration of processes that happened in much wider time frames in the past, such as global climate change and human assisted transportation via the much faster and more efficient means of transport nowadays.

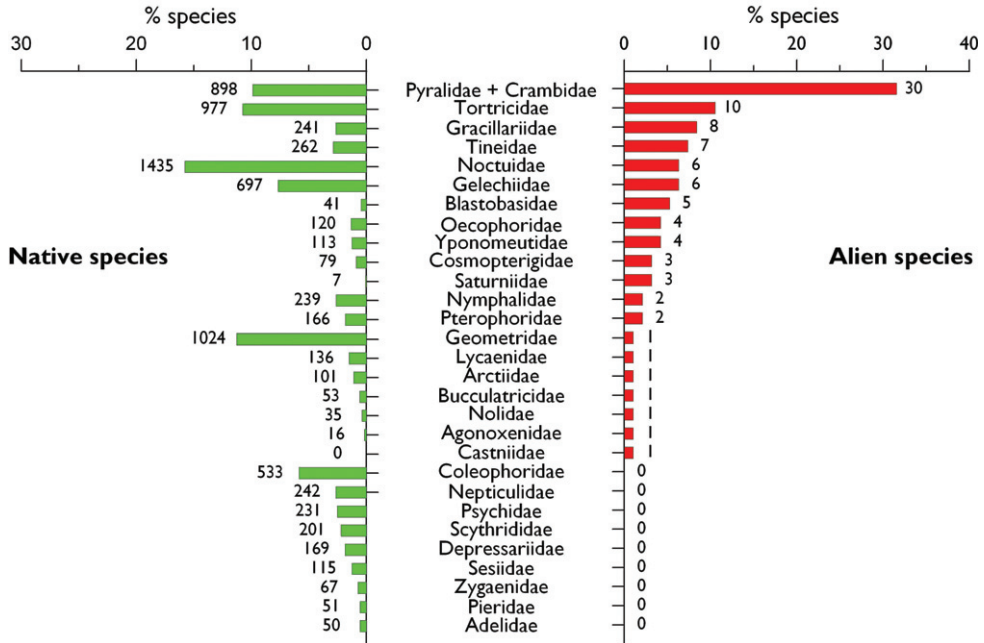
Alien species have historically been introduced for centuries, so it should not be considered that invasive species are necessarily a 20<sup>th</sup> century phenomenon, although the poor documentation of older cases inevitably also provides more scope for speculation. One such case is *Euclémensia woodiella*, belonging to a North American oecophorid lineage (Koster and Sinev 2003) found in numbers near Manchester in 1829 and not since. A much older potential example is the lasiocampid *Pachypasa otus* (Drury, 1773) with a scattered distribution in southern Italy, whose larva feeds mainly on *Cupressus*, could even have been introduced by the Romans for “Coan” silk production, as it possibly represents the “Assyrian Bombyx” mentioned in *Naturalis Historia* by Plinius (Good, 1995).

### 11.4 Biogeographic patterns

For at least 19 alien species, the precise area of origin is not known and these we consider as cryptogenic. We have classified *Phyllonoryctyer platani* (Gracillariidae) as cryptogenic because there are some doubts regarding its origin (Šefrová, 2001). Thus, *P. platani* is either of North American origin and was introduced to Europe with American *Platanus occidentalis*, or it originated in Southeastern Europe and Southwestern and Central Asia, on *Platanus orientalis*. We have included *C. ohridella* as alien within Europe (Table 11.2) since recent genetic studies suggest a Balkan origin as most likely (Valade et al. 2009).

An analysis of the 78 alien species for which the native area of origin is known, shows that Asia has contributed the most alien species with 28.9% (28 out of 97 species) (Figure 11.3). Africa (including Macaronesian islands, Canaries, Madeira and Azores) supplied 21.6% of alien species (21 out of 97 species) followed by North America with 16.5%, Australasia with 7.2%, and the Neotropics, surprisingly few with 5.2%.

Large differences exist among European countries in the number of alien Lepidoptera recorded per country (Figure 11.4). With 42 species, the United Kingdom is the



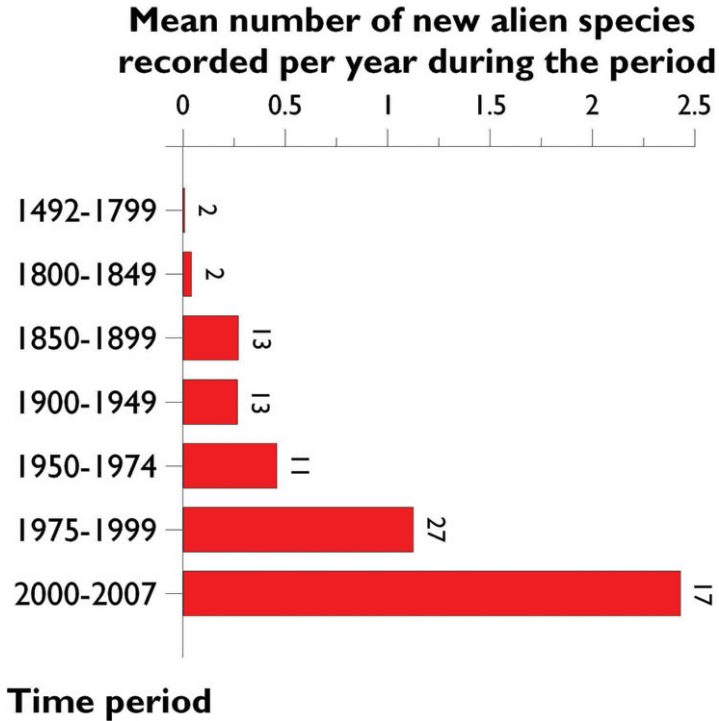
**Figure 11.1.** Comparison of the number of species per family of Lepidoptera in the alien and native entomofauna in Europe. Families are presented in a decreasing order based on the number of alien species. Only the most important families of native species (> 50 spp.) have been considered.

European country with the highest number of alien Lepidoptera, followed by France (mainland) with 41 and Spain (mainland) with 39 species. Both Moldavia and Luxemburg are the European countries with the lowest number (with one alien species each). These differences are very likely to result at least partly from variation in sampling effort and the availability of local taxonomic expertise, but the area and the geographical location of a country is also a very important factor, in this respect.

### 11.5 Main pathways and vectors to Europe

As far as we know, most Lepidoptera alien to Europe have been introduced accidentally (96.9%). A clear exception is some saturniid species that were imported from Asia into Europe for silk production in the nineteenth century, and subsequently became naturalized, including in urban areas. On the other hand, the Silkmoth *Bombyx mori* Linnaeus, 1758. has not been included in the analysis, because although it is widespread in captivity throughout Europe, its flightlessness has prevented naturalisation.

The import of ornamental plants (particularly palms, geraniums and azaleas) is most likely responsible for the introduction of several species such as *Paysandisia archon*, *Cacyreus marshalli* and *Caloptilia azaleella*. Transport also plays an important role in the dispersal of some species, including ones alien within Europe. For instance, *Cameraria*

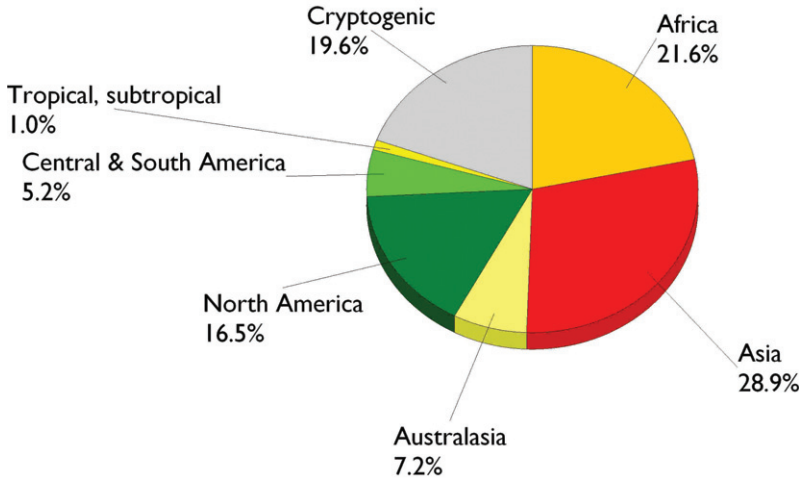


**Figure 11.2.** Rate of established alien Lepidoptera in Europe since 1492 as mean number of alien Lepidoptera recorded per year. Calculations are made on 95 alien species for which the first record is precisely known. Numbers above bars indicate number of new species recorded per period.

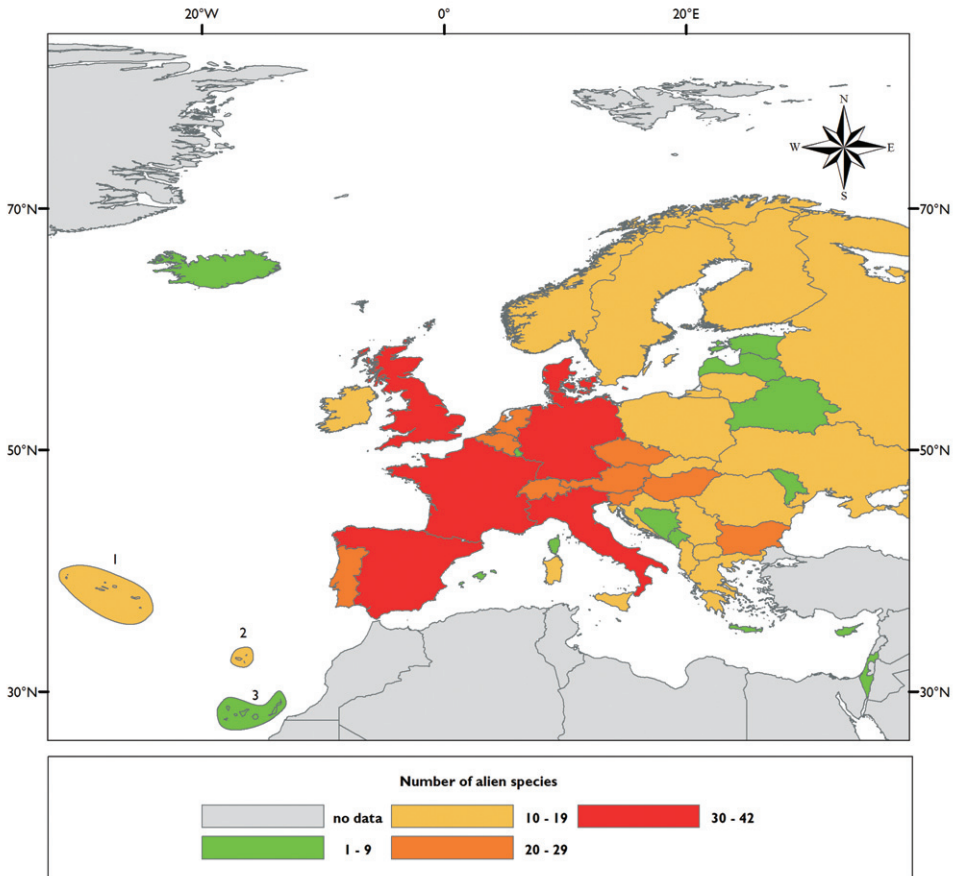
*obridella* seems to feed almost exclusively on *Aesculus hippocastanum* trees planted in urban areas and parks. The main means of its spread is likely to be wind dispersal, but human assisted transportation played a major role in the long distance dispersal of this species (Gilbert et al. 2004). Since the advent of tropical butterfly houses in the 1980s, a potential new threat has emerged, the use of mass butterfly releases for weddings, a practice increasingly popular in countries such as Italy, where one of us (AZ) has recorded a number of exotic species flying freely in cities. Usually Monarch butterflies are used, but less scrupulous companies may be using a range of exotics, many of which are likely to find climate change and the availability of hostplants for some papilionid butterflies, such as Rutaceae planted in city gardens propitious for establishment of at least temporary populations.

### 11.6 Most invaded ecosystems and habitats

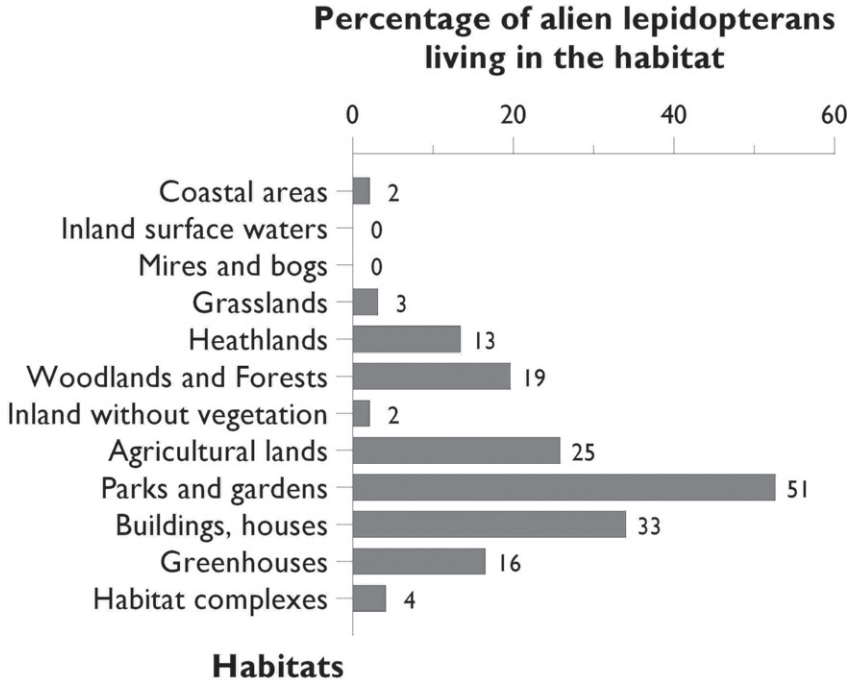
Most alien Lepidoptera are phytophagous (78.3%), whereas detritivores represent only 21.6% (Table 11.1). The majority of alien Lepidoptera established in Europe are confined to man-made habitats, and only a few species have become established in a more or less natural environment, mostly in woodlands. Examples of the latter include the



**Figure 11.3.** Regions of origin of the Lepidoptera species alien to Europe



**Figure 11.4.** Colonization of continental European countries and main European islands by Lepidoptera species alien to Europe.



**Figure 11.5.** Main habitats of 97 alien Lepidoptera species established in Europe (note that a species may live in several habitats).

arctiid *Hyphantria cunea*, the gracillariid *Phyllonorycter issikii* in Central Europe and the saturniid *Antheraea yamamai* in the Balkans.

In Europe, most alien Lepidoptera species feed on their original hostplants. However, some species seem to have been able to switch to other hostplants that are often closely related. For instance, *Paysandisia archon* specializes on *Trithrinax campestris* (Arecaceae) and to a lesser extent on *Cocos yalae* in its native area (Argentina, Uruguay).

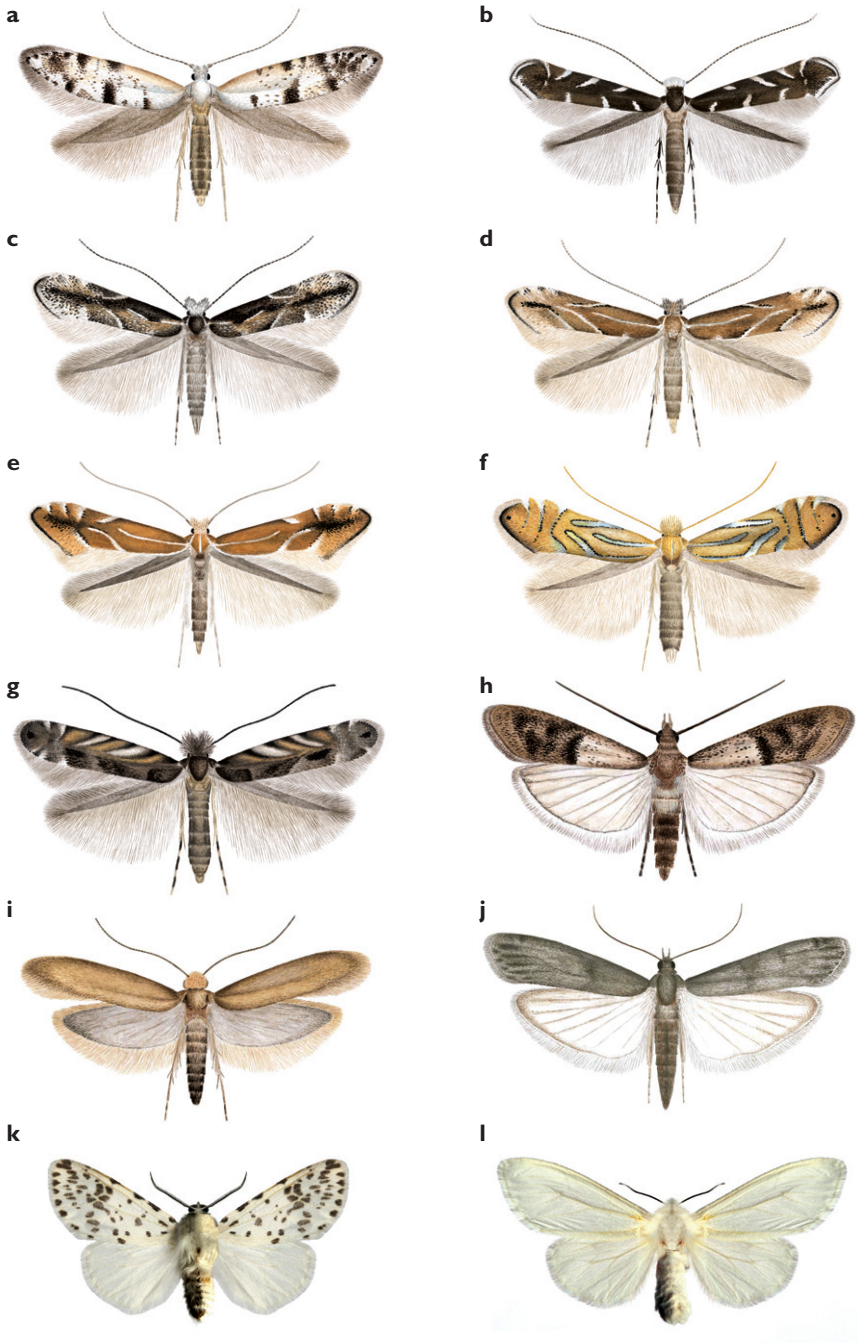
However, in Europe this moth has expanded its host range to many ornamental exotic palms (*Phoenix canariensis*, *Latania* sp.) as well as posing a threat to the native *Chamaerops humilis* (Montagud Alario 2004).

About 50.5% of alien Lepidoptera live indoors in domestic, industrial and other artificial habitats such as 16.5% in greenhouses (Figure 11.5). Six out of the nine species that feed on stored products show a cosmopolitan distribution. Parks and gardens host 52.6% of alien species, where they are frequently introduced with their native hostplant, while 25.8% have colonized agricultural land (Figure 11.5).

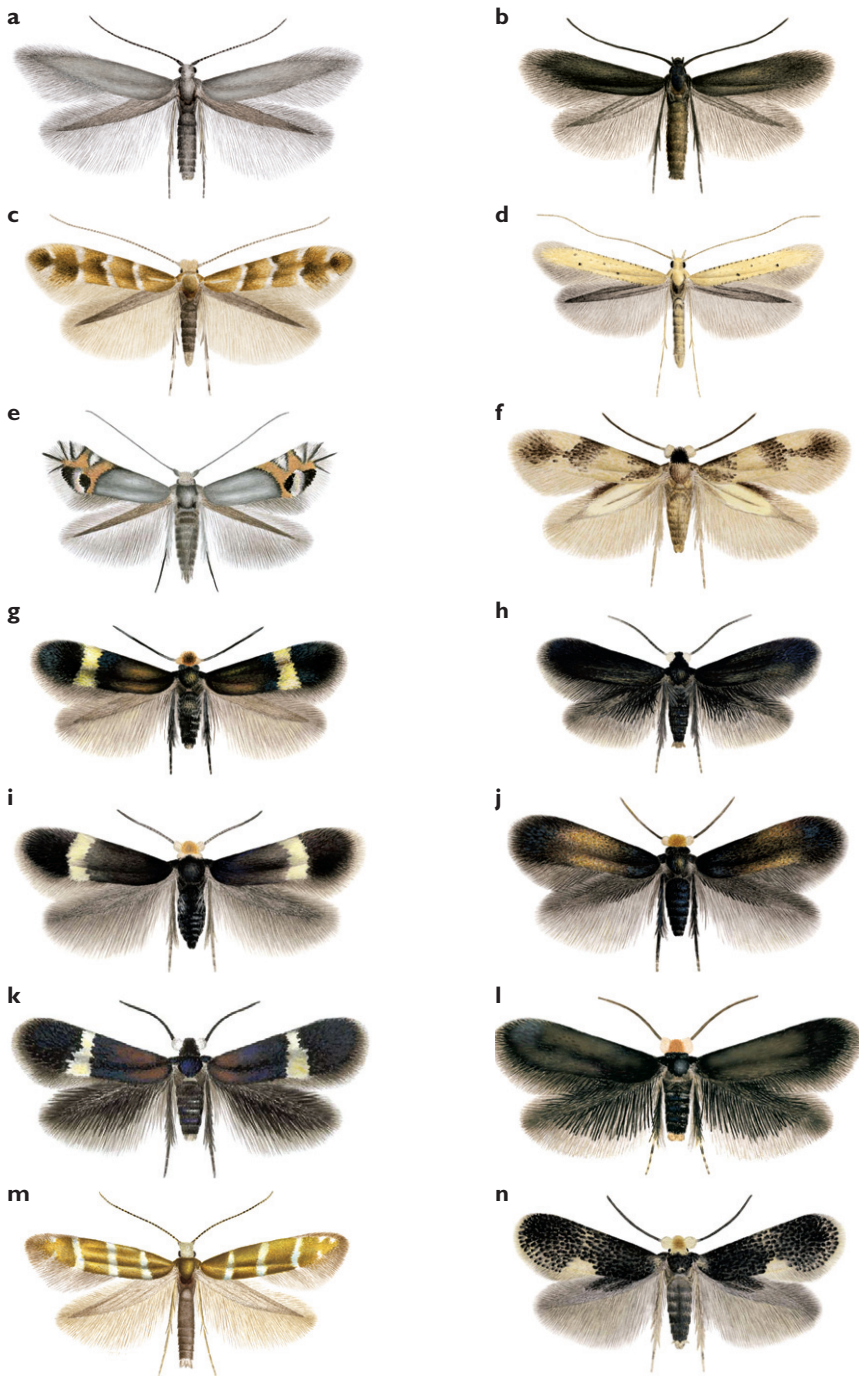
## 11.7 Ecological and economic impact

The impact of most alien Lepidoptera species has not been quantified in detail. However, negative economic impact has been recorded for 16 alien species. The Indian

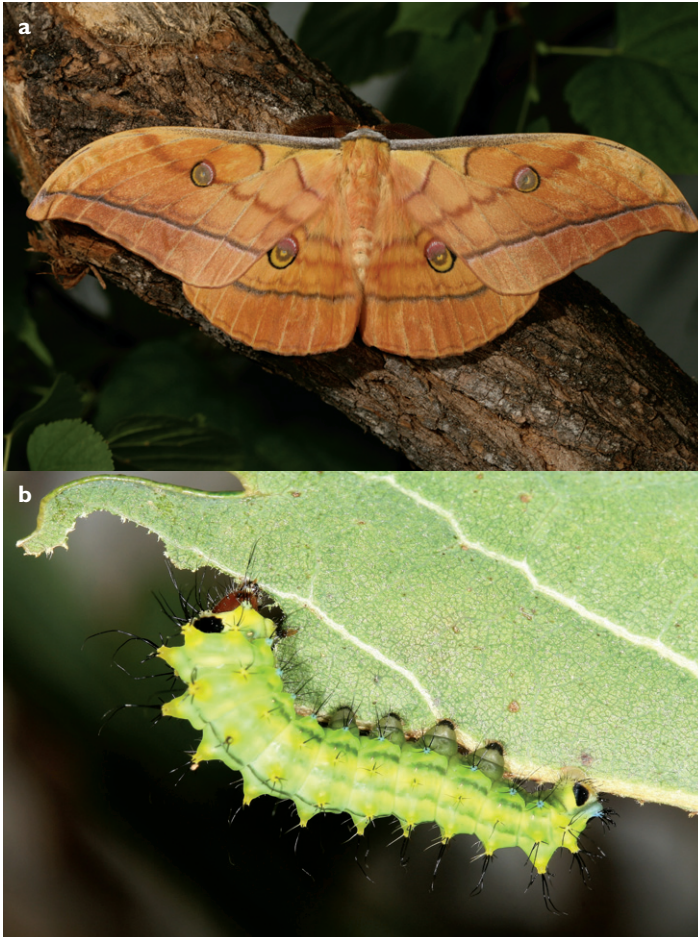




**Figure 11.6.** Adult habitus of some lepidopteran species alien to Europe: **a** *Argyresthia thuiella* **b** *Parectopa robiniella* **c** *Phyllonorycter issikii* winter form **d** *Phyllonorycter issikii* summer form **e** *Phyllonorycter leucographella* **f** *Phyllonorycter platani* **g** *Phyllonorycter robiniella* **h** *Plodia interpunctella* **i** *Tineola bisselliella* **j** *Ephestia kuehniella* **k** *Hyphantria cunea* male **l** *Hyphantria cunea* female (drawings by Aleš Laštůvka).



**Figure 11.7.** Adult habitus of some lepidopteran species alien in Europe: **a** *Coleophora laricella* **b** *Coleophora spiraeella* **c** *Cameraria ohridella* **d** *Caloptilia roscipennella* **e** *Leucoptera malifoliella* **f** *Acalyptris platani* **g** *Stigmella aurella* **h** *Stigmella atricapitella* **i** *Stigmella centifoliella* **j** *Stigmella pyri* **k** *Stigmella speciosa* **l** *Stigmella suberivora* **m** *Argyresthia trifasciata*; **n** *Ectoedemia heringella*. (drawings by Aleš Laštůvka).



**Figure 11.8.** Alien saturnid originating from Asia, *Antheraea yamamai* **a** adult **b** 2nd instar larva (credit Zdenek Laštůvka)

Meal Moth *Plodia interpunctella* (Hübner, 1823) may severely affect grain and grain products, dried fruits and seeds in households and warehouses. The Common Clothes Moth *Tineola bisselliella* is another example of a major pest in houses where it feeds on clothes, carpets, rugs, and upholstered furniture. However, along with several other tineids, this species has become rare due to the increase in use of man-made fibres and the dry environment created by central heating (Kimber, 2008). The most serious alien lepidopteran pests in orchards in many parts of Europe include *Grapholita molesta*, *Hyphantria cunea* and *Prays citri*.

Some species can also cause aesthetic impact. Thus, species causing severe infestations can lead to almost complete defoliation of the hostplants. For instance, *C. obriidella* causes premature defoliation of the white-flowered horse-chestnut, *Aesculus hippocastanum*. The trees do not die but the aesthetic impact is so severe that in some countries, heavily infested trees have been felled and removed.

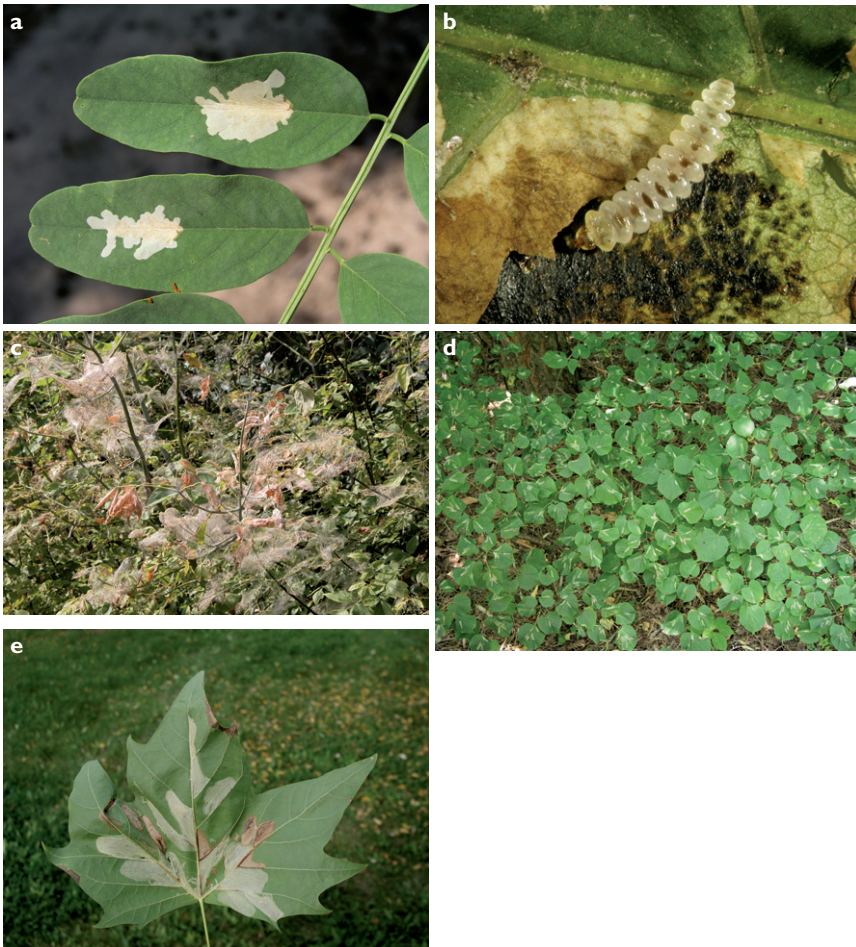




**Figure 11.9.** Clearwings (Sesiidae) alien in Europe. **a** *Pennisetia hylaeiformis* ♂ **b** *Synanthedon andrenaeformis* ♂ **c** *Synanthedon myopaeformis* ♂. (credit Zdenek Laštůvka)

Little is known, however, about the ecological impact of alien Lepidoptera in natural areas of Europe (Kenis et al. 2009). Four alien Lepidoptera species seem to have a potentially important ecological impact: 1) the recently introduced pyralid *Diaphania perspectalis* that could represent a serious threat to topiary Box hedges and plants in nurseries, parks and gardens, and *Buxus* shrubs growing in the wild; 2) *C. obriidella*, that recent studies suggest could have a potential negative impact on native leafminers via apparent competition and could be adapting to *Acer* species in some areas (Péré et al. 2009); 3) the lycaenid *Cacyreus marshalli*, which threatens both native geraniums and *Geranium*-consuming lycaenids (Quacchia et al. 2008); 4) finally, as previously mentioned, *Paysandisia archon* represents a serious threat to the conservation of natural populations of *Chamaerops humilis*, the only native palm in Europe (Montagud Alario 2004, Sarto i Monteyes 2002).

Lastly, we recommend that in order to guarantee the well being of natural ecosystems and also to keep track of future additions to the European alien Lepidoptera list, natural areas of special conservation concern like those under the Natura-2000 framework should be monitored more intensively and regularly for the early detection of potential threats, which according to our results are expected to increase.



**Figure 11.10.** Damage by alien lepidopteran larvae. **a** mines of *Parectopa robiniella* on *Robinia* **b** 3rd instar larva of *Cameraria obridella* extracted from its mine on *Aesculus* **c** damage of *Hyphantria cunea* on *Acer negundo* **d** mines of *Phyllonorycter issikii* on *Tilia* **e** mines of *Phyllonorycter platani* on *Platanus* (Credit: Hana Šefrová).

## Acknowledgements

We would like to thank Leif Aarvik, Giorgio Baldizzone, Jarosław Buszcko, Martin Corley, Mirza Dautbasic, Willem Ellis, Eddie John, Natalia Kirichenko, Ferenc Lakatos, Phil Lambdon, Paul Sammut and Jaan Viidalepp for sending information about alien Lepidoptera from their respective countries. We also thank Cees Gielis and Klaus Sattler for comments on Pterophoridae and Gelechiidae respectively; Shipher Wu and Shen-Horn Yen for their comments on *Callopietria maillardii* and Juan Jose Pino Perez and Antonio Verdugo Paez for their comments on *Danaus*. David Lees was funded by a STUDIUM fellowship during preparation of this paper.

## References

- Aastrup CH (1969) *Phthorimaea operculella* Zell. *Index of Flora and Fauna 1890–1994* 75: 63–64.
- Abafi-Aigner L, Pável J, Uhryk F (1896) Ordo Lepidoptera. Budapest: Regia Societas Scientarium Naturalium Hungarica, 82 pp.
- Adams RG (1979) *Tinea murariella* Staudinger in Britain (Lepidoptera: Tineidae). *Entomologist's Gazette* 30: 269–270.
- Agassiz DJL (1978) *Gelechia sabinella* (Zeller) (Lepidoptera: Gelechiidae), a species new to Britain. *Entomologist's Gazette* 29: 136–137.
- Agassiz DJL (1978) Five introduced species, including one new to science, of China Mark moths (Lepidoptera: Pyralidae) new to Britain. *Entomologist's Gazette* 29: 117–127.
- Agassiz DJL (1996) Invasions of Lepidoptera into the British Isles. In: Emmet AM (Ed) *The Moths and butterflies of Great Britain and Ireland*. Colchester: Harley Books, 9–36.
- Agassiz DJL (1996) *Eccopisa effractella* Zeller (Lepidoptera: Pyralidae) new to the British Isles. *Entomologist's Gazette* 47: 181–183.
- Agassiz DJL (1999) The Cypress Tip moth *Argyresthia cupressella* Walsingham, 1890 (Lepidoptera: Yponomeutidae) new to Britain. *Entomologist's Gazette* 50: 11–16.
- Agassiz DJL (2007) *Prays peregrina* sp. n. (Yponomeutidae) a presumed adventive species in Greater London. *Nota Lepidopterologica* 30: 407–410.
- Aguiar AMF, Karsholt O (2006) Systematic catalogue of the entomofauna of the Madeira archipelago and selvagens islands Lepidoptera vol 1. *Boletim do Museu Municipal do Funchal (Historia Natural)*, 9: 5–189.
- Aguilar L, Miller JY, Sarto i Monteys V (2001) A new lepidopteran family for the European fauna. *SHILAP Revista de Lepidopterologia* 29: 86–87.
- Aistleitner U (2003) Erste Nachweise des Geranien-Bläulings *Cacyreus marshalli* Butler, 1898, in der Schweiz (Lepidoptera, Lycaenidae). *Entomologische Berichte Luzern* 49: 151–154.
- Amsel HG (1959) Portugiesische Kleinsmetterlinge gesammelt von Teodoro Monteiro, O. S. B. *Anais da Faculdade de Ciencias do Porto* 41: 5–20.
- Andres von A (1916) Verzeichnis der während meiner Kriegsgefangenschaft von mir auf Malta gesammelten Lepidoptera. Hemiptera und Coleoptera. *Entomologische Rundschau* 33: 48–49.
- Asher JM, Warren R, Fox P, Harding G, Jeffcoate S (2001) The Millennium Atlas of Butterflies in Britain and Ireland. Oxford: Oxford University Press, 433 pp.
- Asselbergs JEF (1999) *Arenipses sabella* Hampson, 1901, from South Spain: new to the European fauna; *Thylacoptila paurosema* Meyrick, 1885, new to the fauna of the Canary Islands; *Ancylosis (Ancylosis) albidella* Ragonot, 1888, new to the Spanish fauna (Lepidoptera: Pyralidae, Galleriinae, Phycitinae). *SHILAP Revista de Lepidopterologia* 27: 125–129.
- Baeta-Neves CM (1945) Nota sobre a *Lithocolletis platani* Stgr. (Lepidoptera - Gracillariidae), espécie nova para a Entomofauna de Portugal. *Arquivos do Museu Bocage* 16: 85–88.
- Baez M (1998) Mariposas de Canarias. Alcorcón: Rueda, 208 pp.
- Baldizzone G (2010) pers. comm. 11/02/10 to DCL



- Baraniak E, Walczak U (2000) *Phyllonorycter leucographella* (Zeller, 1850) (Lepidoptera: Gracillariidae) w Polsce. *Wiadomości Entomologiczne* 19: 105–108.
- Bathon H (1984) Ein Besuch aus den Tropen: *Callopietria maillardii* in Hessen. (Lepidoptera: Noctuidae). *Mitteilungen Internationaler Entomologischer Verein* 9: 78–80.
- Battisti A, Stastny M, Netherer S, Robinet C, Schopf A, Roques, A, Larsson, S (2005) Expansion of geographic range in the Processionary Moth caused by increased winter temperatures. *Ecological Applications* 15: 208423.
- Bech K (2009) Fund af storsommerfugle I Danmark 2008. *Lepidoptera Tilleg* 9: 45.
- Bednova OV, Belov DA (1999) The Lime Leafminer (Lepidoptera, Gracillariidae) in forest plantations of Moscow and adjacent areas. *Lesnoi Vestnik*, 2: 172–177.
- Beirne BP (1940) Note on *Mnesipatris filicivora* Meyr. *Entomologist* 70: 195–196.
- Bella S, Ferrauo G (2005) Presence of *Megalorhipida leucodactyla* (Lepidoptera: Pterophoridae) in Sicily: new report for the Italian fauna and notes on the diffusion of its host plant *Boerhavia repens* L. ssp. *viscosa* (Choisy) Maire (Nyctaginaceae). *Biological Invasions* 7: 577–587.
- Bella S, Marchese G (2007) First record of *Lantanophaga pusillidactylus* (Walker, 1864) for the Italian fauna. *Bollettino di Zoologia Agraria e di Bachicoltura* 39: 71–74.
- Bentinck GA (1963) Bijzondere Lepidoptera voor de Nederlandse fauna. *Entomologische Berichten* 23: 171–172.
- Berndt L, Brockerhoff EG, Jactel H, Weis T, Beaton J (2004) Biology and rearing of *Pseudocremia suavis*, an endemic looper (Lepidoptera: Geometridae) with a history of outbreaks on exotic conifers. *New Zealand Entomologist* 27: 73–82.
- Billen W (1999) Ist der Mittelmeernelkenwickler (*Cacoecimorpha pronubana* Hübner) (Lepidoptera: Tortricidae) im Begriff, in Süddeutschland heimisch zu werden? *Nachrichtenblatt des Deutschen Pflanzenschutzdienstes* 51: 127–128.
- Blažič A, Dražumerič M, Hudoklin A (1995) *Machov zbornik. Društvo pedagoških delavcev Dolenjske, Klub za nadarjene učence*. Novo mesto, 85 pp.
- Bolchi Serini G, Trematerra P (1989) Comparsa del nearctic *Phyllonorycter robiniellus* (Clemens) (Lepidoptera, Gracillariidae) in Italia. *Bollettino di Zoologia Agraria e di Bachicoltura* 21: 193–198.
- Bolle G (1921) La Tignola della farina e la sua distruzione. *Allevamenti Palermo* 2: 138–144.
- Bond KGM, Nash R, O'Connor JP (2006) An Annotated Checklist of the Irish Butterflies and Moths (Lepidoptera). Dublin: The Irish Biogeographical Society, 177 pp.
- Borg J (1899) The Potato Moth - Lita Solanella. *Daily Malta Chronicle*. 5.
- Borg P (1932) The Lepidoptera of the Maltese Islands. Malta: Government Printing Press, 25 pp.
- Bradley JD (1959) An illustrated list of the British Tortricidae part II: Olethreutinae. *Entomologist's Gazette* 10: 60–80.
- Bradley JD, Tremewan WG, Smith A (1973) *British Tortricoid moths, Cochyliidae and Tortricidae: Tortricinae*. London: The Ray Society, 251 pp.
- Brua C (2008) La Pyrale du buis *Diaphania perspectalis*. Une nouvelle espèce invasive présente en Alsace. [http://sites.estvideo.net/sae/pyrale\\_du\\_buis.html](http://sites.estvideo.net/sae/pyrale_du_buis.html).
- Budd PA, Goater B (1998) *Eustixia pupula* Hübner, 1823 (Lepidoptera: Pyralidae, Odontiinae), a New World pyralid new to Britain and Europe. *Entomologist's Gazette* 49: 169–170.

- Buhl O, Falck P, Karsholt O, Larsen K, Vilhelmsen F Fund af småsommerfugle fra Danmark i 2008 (Lepidoptera). *Entomologiske Meddelelser* 77: In press.
- Buhl O, Karsholt O, Larsen K, Nielsen ES, Pallesen G, Palm E, Schnack K (1982) Fund af småsommerfugle i Danmark 1980 (Lepidoptera). *Entomologiske Meddelelser* 49: 49–57.
- Buhl O, Andersen EM, Falck P, Jeppesen G, Larsen K (1985) *Callopietria maillardi* (Guenée, 1862) fundet i Danmark (Lepidoptera, Noctuidae). *Lepidoptera* 10: 359–363.
- Buhl O, Karsholt O, Larsen K, Palm E, Schnack K (1987) Fund af småsommerfugle fra Danmark i 1984 (Lepidoptera). *Entomologiske Meddelelser* 54: 97–112.
- Buhl O, Falck P, Jørgensen B, Karsholt O, Larsen K, Schnack K (1991) Fund af småsommerfugle fra Danmark i 1989 (Lepidoptera). *Entomologiske Meddelelser* 59: 29–40.
- Buhl O, Falck P, Jørgensen B, Karsholt O, Larsen K, Vilhelmsen F (1994) Fund af småsommerfugle fra Danmark i 1993 (Lepidoptera). *Entomologiske Meddelelser* 62: 105–115.
- Buhl O, Falck PJ, Karsholt O, Larsen K, Vilhelmsen F (1997) Fund af småsommerfugle fra Danmark i 1996 (Lepidoptera). *Entomologiske Meddelelser* 65: 149–158.
- Buhl O, Falck P, Jørgensen B, Karsholt O, Larsen K, Vilhelmsen F (1998) Fund af småsommerfugle fra Danmark i 1997 (Lepidoptera). *Entomologiske Meddelelser* 66: 105–115.
- Buhl O, Falck P, Jørgensen B, Karsholt O, Larsen K, Vilhelmsen F (2001) Fund af småsommerfugle fra Danmark i 2000 (Lepidoptera). *Entomologiske Meddelelser* 69: 69–79.
- Buhl O, Falck P, Jørgensen B, Karsholt O, Larsen K, Vilhelmsen F (2003) Fund af småsommerfugle fra Danmark i 2002 (Lepidoptera). *Entomologiske Meddelelser* 71: 65–76.
- Buhl O, Falck P, Jørgensen B, Karsholt O, Larsen K, Vilhelmsen F (2004) Fund af småsommerfugle fra Danmark i 2003 (Lepidoptera). *Entomologiske Meddelelser* 72: 33–46.
- Buhl O, Falck P, Jørgensen B, Karsholt O, Larsen K, Vilhelmsen F (2005) Fund af småsommerfugle fra Danmark i 2004 (Lepidoptera). *Entomologiske Meddelelser* 73: 73–86.
- Buhl O, Falck P, Jørgensen B, Karsholt O, Larsen K, Vilhelmsen F (2006) Fund af småsommerfugle fra Danmark i 2005 (Lepidoptera). *Entomologiske Meddelelser* 74: 91–105.
- Buhl O, Falck P, Karsholt O, Larsen K, Vilhelmsen F (2007) Fund af småsommerfugle fra Danmark i 2006 (Lepidoptera). *Entomologiske Meddelelser* 75: 89–109.
- Buszko J, Vives Moreno A (1992) *Borkhausenien nephra* Hodges, 1974 (Lepidoptera, Oecophoridae) w Polsce. *Wiadomości Entomologiczne* 11: 101–104.
- Buszko J, Nowacki J (2000) The Lepidoptera of Poland. A Distributional checklist. Poznań-Toruń: Scripta Technica, 179 pp.
- Butin H, Führer E (1994) Die Kastanien-Miniermotte (*Cameraria ohridella* Deschka & Domic) ein neuer Schädling an *Aesculus hippocastanum*. *Nachrichtenblatt Der Deutsche Pflanzenschutzdienst* 46: 89–91.
- Carnelutti J (1975) Lepidoptera, Mikrolepidoptera. *Porocilo o inventarizaciji favne, vegetacije, škodljivcev in rastlinskih bolezni na območju jugoslovansko-avstrijske meje 1974–1975*. Ljubljana: Biološki institut Jovana Hadzija, 82–156.
- Caruana Gatto A (1905) *Seconda Contribuzione alla Fauna Lepidotterologica dell'Isola di Malta – Eterocerii*. Malta: Tipografia del “Malta”, 32 pp.
- Carvalho de JP (1995) Microlepidoptera of the Madeira and Selvagem Archipelagoes (Insecta Lepidoptera). *Boletim do Museo Municipal do Funchal (Historia Natural)* 4: 559–588.

- Carvalho de JP, Aguiar AMF (1997) Pragas dos citrinos na Ilha da Madeira. Funchal: RAM/SRAFP, INIA/EAN, 411 pp.
- Casale A (1973) Popolazione di *Antheraea yamamai* (Guér.Mén.) spontaneamente ambientata in peculiare autonomo biotopo italiano (Lep. Saturniidae). *Annali della facoltà di Scienze agrarie dell'Università di Torino* 8: 309–324.
- Chalmers-Hunt JM (1985) *Monochroa niphognatha* Gozmány, 1953 and *Athrips rancidella* Herrich-Schaffer, 1854 (Lepidoptera: Gelechiidae), new to the British fauna. *Entomologist's Record and Journal of Variation* 97: 20–24.
- Chambon J-P, Fabre J-P, Khemeci M (1990) Trois nouvelles Tordeuses d'Algérie nuisibles aux Conifères: *Epinotia algeriensis* n. sp. (Olethreutinae, Eucosmini), *Lozotaenia cedrivora* n. sp. et *Dichelia numidicola* n. sp. (Tortricinae, Archipini) [Lep. Tortricidae]. *Bulletin de la Société entomologique de France* 95: 131–138.
- Ciampolini M (1973) *Opogona sacchari* Bojer dannosa a piante ornamentali. *Notiziario sulle malattie della piante* 88: 88–89.
- Cocquemot C, Nel J (2009) *Bucculatrix chrysanthemella* (Rebel, 1896) introduit en France (Lepidoptera, Bucculatricidae). *L'Entomologiste* 65: 71–73.
- Colazza S, Privitera S, Campo G, Peri E, Riolo P (2005) *Paysandisia archon* (Lepidoptera: Castniidae) a new record for Sicily. *L'Informatore Fitopatologico* 5: 56–57.
- Coldewey H, Vári L (1947) Lijst van op Schovenhorst aangetroffen vlinders. In: Oudemans TC (ed) *Gedenboek ter gelegenheid van het 100-jarig bestaan van Schovenhorst - 1948*. Netherlands: Putten, 283–299.
- Constanzi M, Cocquemot C, Nel J, Belgiovine M (2008) Un nuovo minatore fogliare su margherita da vaso in Liguria. *Culture Protette* 37: 74–78.
- Corley MFV, Gardiner AJ, Cleere N, Wallis PD (2000) Further additions to the Lepidoptera of Algarve, Portugal (Insecta: Lepidoptera). *SHILAP Revista de Lepidopterologia* 28: 245–319.
- Corley MFV (2005) Further additions to the Lepidoptera of Algarve, Portugal. II (Insecta: Lepidoptera). *SHILAP Revista de Lepidopterologia* 33: 347–364.
- Corley MFV, Maravalhas E, Passos de Carvalho J (2006) Miscellaneous additions to the Lepidoptera of Portugal (Insecta: Lepidoptera). *SHILAP Revista de Lepidopterologia* 34: 407–427.
- Costa Seglar M, Vives Quadras JM (1976) *Epichoristodes acerbella* Walk, nuevo tortricido, plaga de los claveles, en la Península Ibérica. *SHILAP Revista de Lepidopterologia* 4: 233–234.
- Csoka G (2001) Recent invasions of five species of leafmining Lepidoptera in Hungary. In: Liebhold AM, McManus ML, Otvos IS and Fosbroke SLC (eds) *Integrated management and dynamics of forest defoliating insects*: U.S. Department of Agriculture, Forest Service, Northeastern Research Station., pp. 31–36.
- DAISIE (2008) List of species alien in Europe and to Europe. In: Drake JA (ed) *Invading Nature: Springer Series in Invasion Ecology*. Dordrecht: Springer, pp. 133–263
- De Crombrugghe E (1906) Catalogue raisonné des Microlépidoptères de Belgique. *Mémoires de la Société entomologique de Belgique* 13: 1–172.
- De Crombrugghe E (1909) Observations microlépidoptérologiques faites en 1908. *Annales de la Société Entomologique de Belgique* 53: 44–47.

- De Fré C (1858) Catalogue des Microlépidoptères de la Belgique. *Annales de la Société Entomologique de Belgique* 2: 45–162.
- De Graaf HW (1851) Nederlandsche schubvleugelige insekten (Lepidoptera). *Bouwstoffen voor eene Fauna van Nederland* 1: 1–55.
- De Prins W (1983) Systematische Naamlijst van de Belgische Lepidoptera. *Entomobrochure* 4: 1–57.
- De Prins W (1989) Enkele soorten Microlepidoptera nieuw voor de Belgische fauna (Lepidoptera: Opostegidae, Ochseneimeriidae, Coleophoridae, Gelechiidae, Cochyliidae, Pterophoridae). *Phegea* 17: 49–52.
- De Prins W (1994) *Phyllonorycter leucographella* (Zeller, 1850), een nieuwe soort voor de Belgische fauna (Lepidoptera: Gracillariidae). *Phegea* 22: 125–128.
- De Prins W (1996) Enkele nieuwe en interessante soorten Microlepidoptera voor de Belgische fauna (Lepidoptera: Nepticulidae, Yponomeutidae, Coleophoridae, Gelechiidae). *Phegea* 24: 137–140.
- De Prins W, Puplesiene J (2000) *Cameraria ohridella*, een nieuwe soort voor de Belgische fauna (Lepidoptera: Gracillariidae). *Phegea* 28: 1–6.
- De Prins W, Groenen F (2001) *Phyllonorycter robiniella*, een nieuwe soort voor de Belgische fauna (Lepidoptera: Gracillariidae). *Phegea* 29: 159–160.
- De Prins W (2005) Interessante waarnemingen van Lepidoptera in België in 2004 (Lepidoptera). *Phegea* 33: 1–8.
- De Prins W (2007) Interessante waarnemingen van Lepidoptera in België in 2006 (Lepidoptera). *Phegea* 35: 1–20.
- De Sélys-Longchamps E (1844) Enumération des insectes Lépidoptères de la Belgique. *Mémoires de la Société royale des Sciences de Liège* 2: 1–35.
- Dei A (1871) Sui danni degli insetti nelle campagna senesi durante l'anno 1871. *Bullettino della Società Entomologica Italiana, Firenze* 3: 360–365.
- Della Beffa G (1931) Notizie su alcuni Microlepidotteri nocivi o poco noti pel Piemonte. *Bollettino Laboratorio Sperimentale e Osservatorio Fitopatologia* 6: 1–7.
- Demokidov KE (1916) On the life history of the tea moth, *Parametriotes theae* Kusn. (Lepidoptera, Tineidae). *Revue Russe d'Entomologie* 15: 618–626.
- Deurs W (1958) Nye og sjældne sommerfugle 1956. *Entomologiske Meddelelser* 28: 169–171.
- Domínguez García-Tejero F (1943) Las plagas de los frutales en España y su distribución geográfica. *Boletín de Patología Vegetal y entomología Agrícola* 12: 329–352.
- Drenowsky A (1909) Izsledvaniya vurhu peperudnata fauna na Rila planina. *Sbornik narodni umotvoreniya nauka I knizhnina* 25: 1–23.
- Drensky P (1930) Bolesti I nepriyateli po zhitnite rasteniya v Bulgaria. *Svedeniya po zemedeliето* 11: 3–54.
- Du Merle P (1988) Les Recherches sur les insectes nuisibles aux forêts dans le Sud-Est de la France. *Revue forestière française* 40: 297–301.
- Dufrane A (1960) Microlépidoptères de la faune belge (neuvième note). *Bulletin du Musée royal d'Histoire naturelle de Belgique* 36: 1–16.

- Emmet AM, Watkinson IA, Wilson MR (1985) Gracillariidae. In: Heath J and Emmet AM (Eds) *The Moths and Butterflies of Great Britain and Ireland. Volume 2 Cossidae – Heliodinidae*. Great Horkesley: Harley Books, 460
- Emmet AM (1988) *A Field Guide to the Smaller British Lepidoptera*. London: British Entomological and Natural History Society, 288 pp.
- Espinosa B, Di Muccio P, Russo G (2003) *Paysandisia archon*, una minaccia per le nostre palme. *L'Informatore Agrario* 59: 61.
- Ermolaev IV, Motoshkova NV (2008) Biological invasion of the Lime Leafminer *Lithocolletis issikii* Kumata (Lepidoptera, Gracillariidae): interaction of the moth with the host plant. *Entomological Review*, 88: 1–9.
- Essl F, Rabitsch W (2002) Neobiota in Österreich. Wien: Umweltbundesamt, 432 pp.
- Fabre J-P (1997) Geographical distribution of the tortricid moth *Epinotia cedriceda* (Lepidoptera: Tortricidae) within the natural and artificial ranges of the cedar trees *Cedrus atlantica* and *C. libani*. *European Journal of Entomology* 94: 485–494.
- Fabre J-P, Avci M, Chalon A (2001) La tordeuse *Dichelia cedricola* Diakonoff, un ravageur d'Asie Mineure potentiellement important pour la France. *Revue forestière française* 2: 131–138.
- Falck P, Karsholt O (1993) *Cydia grunertiana* (Ratzeburg, 1868), stat. rev. - an ignored species of Tortricidae. *Nota Lepidopterologica* 16: 79–90.
- Feron M (1973) Apparition de la pyrale du riz (*Chilo suppressalis*) en Camargue. *Bulletin d'information des riziculteurs de France* 145: 13–15.
- Filipjev NN (1932) Verzeichnis der schädlichen Insekten der paläarktischen Region. Leningrad: Vses. akad. s.-ch. nauk im. V. I. Lenina, Inst. zaščity rastenij, 430 pp.
- Fjeldalen J (1965) Angrep av sydafrikansk nellikvikler i Norge. *Gartneryrket* 55: 340–342.
- Fologne E (1859) Supplément au catalogue des lépidoptères de Belgique. *Annales de la Société Entomologique de Belgique* 3: 107–132.
- Ford EB (1945) *Butterflies*. London: Collins, 368 pp.
- Franco JC, Ramos AP, Moreira I (2006) *Infra-estruturas ecológicas e protecção biológica: caso dos citrinos*. Lisboa: ISA Press, 106 pp.
- Frankenhuyzen Av (1974) *Argyresthia thuiella* (Pack.) (Lep., Argyresthiidae). *Entomologische Berichten* 34: 106–111.
- Frankenhuyzen Av (1983) *Phyllonorycter platani* (Staudinger, 1870) (Lep.: Gracillariidae), een bladmineerder op plataan in Nederland. *Entomologische Berichten* 43: 19–25.
- Fric Z (2005) *Colotis evagore* (Klug, 1829) advancing northwards in Spain (Lepidoptera: Pieridae). *SHILAP Revista de Lepidopterologia* 33: 169–171.
- Frohawk FW (1940) Liberated butterflies. *Entomologist* 73: 214.
- Fuentes Garcia FJ (1997) *Cacyreus marshalli* Butler, 1898 llega a Portugal. *SHILAP Revista de Lepidopterologia* 25: 208.
- Gaedike R, Heinicke W (1999) Verzeichnis der Schmetterlinge Deutschlands (Entomofauna Germanica 3). Dresden: Entomologische Nachrichten und Berichte. 216 pp.
- Gaedike R, Karsholt O (2001) Contribution to the Lepidoptera fauna of the Madeira Islands. Part 2. Tineidae, Acrolepiidae, Epermeniidae. *Beiträge zur Entomologie* 51: 161–213.

- García Mercet R (1926) *Asociación Española para el Progreso de las Ciencias, Congreso de Coimbra* 6: 177–184.
- Garijo C, Garcia E (1994) *Phyllocnistis citrella* (Stainton, 1856) (Insecta: Lepidoptera: Gracilariidae: Phyllocnistinae) en los cultivos de cítricos en Andalucía (Sur España): Biología, ecología y control de la plaga. *Boletín de Sanidad Vegetal, Plagas* 20: 815–881.
- Geiter O, Homma S, Kinzelbach R (2001) *Bestandsaufnahme und Bewertung von Neozoen in Deutschland*. Berlin: Umweltforschungsplan des Bundesministeriums für Umwelt, Naturschutz und Reaktorsicherheit. 174 +36 +31 +52 pp.
- Gerasimov AM (1949) Opisanie ognevki *Chilo tadzshikiellus* Gerasimov i sovki *Sesamia cretica striata* Stgr., vredyashchikh sakharnomu trostniku v Tadzshikistane. *Trudy Zoologicheskogo Instituta AN SSSR* 8: 703.
- Gielis C (1996) *Microlepidoptera of Europe, Volume 1: Pterophoridae*. Stenstrup: Apollo Books, 222 pp.
- Gilbert M, Grégoire J-C, Freise JF, Heitland W (2004) Long-distance dispersal and human population density allow the prediction of invasive patterns in the horse chestnut leafminer *Cameraria ohridella*. *Journal of Animal Ecology* 73: 459–468.
- Giunchi P (1957) La *Paralipsa gularis* Zell. nell'Emilia (Lepidoptera Galleriidae). *Bollettino della Società entomologica Italiana* 87: 21–22.
- Glavendekić M, Mihajlović L, Petanović R (2005) Introduction and spread of invasive mites and insects in Serbia and Montenegro. In: Alford DV and Backhouse GF (Eds) *Plant Protection and Plant Health in Europe. Introduction and Spread of Invasive Species. Symposium Proceedings No. 81*. Alton: British Crop Protection Council, 229–230.
- Goater B (1986) *British Pyralid Moths: A Guide to Their Identification*. Colchester: Harley Books, 176 pp.
- Goater B, Nuss M, Speidel W (2005) Pyraloidea I: Acentropinae, Evergestinae, Heliethelinae, Schoenobiinae, Scopariinae. In: Huemer P, Karsholt O and Lyneborg L (Eds) *Microlepidoptera of Europe*. Stenstrup: Apollo Books, 304.
- Gomboc S (2003) Novi vrsti listnih zavrtačev v Sloveniji. [New species of leaf miner in Slovenia]. *Zbornik predavanj in referatov 6. slovenskega posvetovanja o varstvu rastlin, 4–6 marec 2003. [Slovenian Conference on Plant Protection, Zreče, 4.6. March 2003]*, Zreče, p. 423–429.
- Gomboc S, Lasan M, Deutsch H New and interesting records of Lepidoptera in Slovenia – I. *Acta entomologica Slovenica*. Volume: 18: In press.
- Gómez de Aizpúrua C (2004) *Orugas y mariposas de Europa, II. Rhopalocera*: Organismo Autónomo de Parques Nacionales. Ministerio de Medio Ambiente, 219 pp.
- Good I (1995) On the question of silk in pre-Han Eurasia. *Antiquity* 69: 959–968.
- Gozmány LA (2008) *Symmocidae*. Keltern: Goecke and Evers, 558 pp.
- Groenen F, De Prins W (2004) *Cydia grunertiana*, nieuw voor de Belgische fauna (Lepidoptera: Tortricidae). *Phegea* 32: 113–115.
- Gustaffson B (2010) Svenska Fjarilar: Welcome page of the World Plutellidae. [http://www2.nrm.se/en/svenska\\_fjarilar/p/plutella\\_porrectella.html](http://www2.nrm.se/en/svenska_fjarilar/p/plutella_porrectella.html).



- Hacker HH, Legrain A, Fibiger M (2008) Revision of the genus *Acontia* Ochseneheimer, 1816 and the tribus Acontiini Guenée, 1841 (Old World) (Lepidoptera: Noctuidae: Acontiinae). *Esperiana Buchreihe zur Entomologie* 14: 1–686.
- Hamburger M, Zarabi L, Weiss M, Argaman Q, Kuslitzky W, Kein, Z (2000) False codling moth (*Cryptophlebia leucotreta*) in Israel. *Phytoparasitica* 29: 84.
- Hance T (1991) Infestation de pâtes de fruits alimentaires par *Ephestia calidella* Guénée (Lepidoptera: Pyralidae). *Bulletin et Annales de la Société royale belge d'Entomologie* 127: 338–340.
- Hancock EG (1984) *Oligostigma bilinealis* Snellen (Lepidoptera: Pyralidae), a second British record. *Entomologist's Gazette* 35: 18.
- Harizanova V, Stoeva A, Mohamedova M (2009) Tomato Leaf Miner, *Tuta absoluta* (Povolny) (Lepidoptera: Gelechiidae) – First Record In Bulgaria. *Agricultural Science and Technologies* 3: 95–98.
- Heath J, Emmet AM (1983) The Moths and Butterflies of Great Britain and Ireland: Vol. 10, Noctuidae (Part 2) and Agaristidae. London and Colchester: Harley Books, 459 pp.
- Heath J, Emmet AM (1985) The Moths and Butterflies of Great Britain and Ireland Volume 2: Cossidae to Heliodinidae. London and Colchester: Harley Books, 460 pp.
- Heath J, Emmet AM (1996) The Moths and butterflies of Great Britain and Ireland, Yponomeutidae to Elachistidae. London and Colchester: Harley Books, 454 pp.
- Heckford RJ (2004) *Anatrachyntis simplex* (Walsingham, 1891) (Lepidoptera: Cosmopteregidae), an adventive species new to the British Isles and a larval description. *Entomologist's Gazette* 55: 95–101.
- Hill M, Baker R, Broad G, Chandler PJ, Copp GH, Ellis J, Jones D, Hoyland C, Laing I, Longshaw M, Moore N, Parrott D, Pearman D, Preston C, Smith RM, Waters R (2005) Audit of non-native species in England. English Nature Research Reports N° 662: Peterborough: English Nature, 81 pp.
- Hind SH (2000) *Tachystola acroxantha* (Meyrick) (Lep:Oecophoridae) around Manchester: history and current status. *Entomologist's Record and Journal of Variation* 112: 127–128.
- Hoffmeyer S (1962) De danske Ugler 2. Århus: Universitetsforlaget i Aarhus, 387 pp.
- Hollingsworth T (2004) Status of *Paysandisia archon* (Burmeister) (Lepidoptera: Castniidae) in southern Europe. *British Journal of Entomology and Natural History* 17: 33–34.
- Holloway J (1998) Geranium bronze *Cacyreus marshalli* Atropos 4: 3–6.
- Honey MR (1994) *Pardasena virgulana* (Mabille) (Lepidoptera: Noctuidae), a species not previously found in the wild in Britain. *British Journal of Entomology and Natural History* 7: 33–34.
- Hrdý I, Krampl F (1977) Faunistic records from Czechoslovakia. *Acta Entomologica Bohemoslovaca* 74: 286.
- Hrubý K (1964) *Prodromus Lepidopter Slovenska*. Bratislava: Slovenskej Akademie Vied, Bratislava, 962 pp.
- Huemer P, Rabitsch W (2002) Schmetterlinge (Lepidoptera) [Section 6.3.1] In: Essl F and Rabitsch W (Eds) *Neobiota in Österreich*. Wien: Umweltbundesamt, 354–362.
- Huisman KJ, Koster JC (1995) Interessante Microlepidoptera uit Nederland in het jaar 1992 (Lepidoptera). *Entomologische Berichten* 55: 53–67.

- Huisman KJ, Koster JC, Nieukerken van EJ, Ulenberg SA (2003) Microlepidoptera in Nederland in 2000. *Entomologische Berichten* 63: 88–102.
- Hyden N, Jilg K, Östman T (2006) Fjärilar: Ädelspinnare-tofsspinnare. Lepidoptera: Lasiocampidae-Lymantriidae. Uppsala: *Nationalnyckeln* 480 pp.
- Ippolito R, Parenzan P (1981) Osservazioni su catture di Lepidotteri in agro di Polignano (Bari). *Entomologica* 16: 143–182.
- Ivinskis P (1976) Микрочешускрылые Литовской ССР (3. Огневки (Lepidoptera, Pyraloidea)). Lietuvos TSR MA darbai. [Microlepidoptera of the Lithuanian SSR. 3. Pyralid moths (Lepidoptera, Pyraloidea)]. *Lietuvos TSR Mokslu Akademijos darbai, C Serija Biologijos. Mokslai* 3: 73–82.
- Ivinskis P (1988) Новые и редкие для Литовской ССР виды насекомых. Сообщения и описания 1987 года. [73 species of Lepidoptera, new to the Lithuanian SSR, found in 1968–1987. In: Jonaitis V (Ed), [New and rare insect species for Lithuania. Records and descriptions]. Vilnius: Institute of Zoology and Parasitology, 47–60
- Ivinskis (1993) Checklist of the Lithuanian Lepidoptera. Vilnius: Institute of Ecology, 220 pp.
- Ivinskis P, Mozūraitis R (1995) 13 new and 48 rare for the Lithuanian fauna Lepidoptera species. In: Jonaitis V (Ed) New and rare for Lithuania insect species. Records and descriptions of 1994–1995. Vilnius: Institute of Ecology, 153–160.
- Ivinskis P (2004) Lepidoptera of Lithuania. Vilnius: Institute of Ecology, 380 pp.
- Ivinskis P, Rimsaite J (2008) Records of *Phyllonorycter robiniella* (Clemens, 1859) and *Parectopa robiniella* Clemens, 1863 (Lepidoptera, Gracillariidae) in Lithuania. *Acta Zoologica Lituanica* 18: 130–133.
- James T (2008) Common Forest Looper *Pseudocoremia suavis* (Butler): a new species to Britain. *Atropos* 33: 13–16.
- Janežič F (1951) *Plant protection against pests and diseases*. Ljubljana: DZS, 567 pp.
- Janežič F (1968) *Kako varujemo rastlinam zdravje?* Ljubljana: DZS, 232 pp.
- Janmouille E (1938) Assemblée mensuelle du 4 juin 1938. *Annales de la Société Entomologique de Belgique* 78: 250–253.
- Janmouille E (1954) *Lithocolletis platani* Stgr. en Belgique. *Lambillionea* 54: 34.
- Janmouille E (1965) Remarques sur la faune belge (suite). *Lambillionea* 64: 12–13.
- Janmouille E (1974) Espèces nouvelles pour la faune belge (suite). *Lambillionea* 74: 16.
- Jannone G (1966) Risultati di alcuni controlli fitosanitari su vegetali e prodotti vegetali esteri nel porto di Genova. *Rivista di Agricoltura Subtropicale e Tropicale* 60: 5–34.
- Johansson R, Nielsen ES, Nieukerken van EJ, Gustafsson B (1990) *The Nepticulidae and Opostegidae (Lepidoptera) of North West Europe*, 730 pp.
- Jones MJ, Lacey LA (1992) The speckled wood butterflies *Pararge xiphia* and *P. aegeria* (Satyridae) on Madeira: distribution, territorial behaviour and possible competition. *Biological Journal of the Linnean Society* 46: 77–89.
- Jørgensen J (1982) *Havebrugszoologi for have og landskab*. Copenhagen: DSR forlag, 300 pp.
- Jürivete U, Kaitila J, Kesküla T, Nupponen K, Viidlepp J, Ōunap, E (2000) *Eesti liblikad. Kataloog. Estonian Lepidoptera. Catalogue*. Tallinn: Eesti Lepidopteroogide Selts, 151 pp.
- Karsholt O, Nielsen ES (1976) Systematisk fortegnelse over Danmarks sommerfugle. Klampenborg: Scandinavian Science Press, 128 pp.

- Karsholt O (1994) Nogle indslæbte sommerfugle i Danmark, samt bemærkninger om dette emne (Lepidoptera). *Entomologiske Meddelelser* 62: 1–5.
- Karsholt O, Nielsen ES (1986) The Lepidoptera described by C. P. Thunberg. *Entomologica scandinavica*, 16: 433–463.
- Karsholt O, Nielsen PS (1998) Revideret katalog over de danske Sommerfugle. Copenhagen: Entomologisk Forening, 144 pp.
- Karsholt O, Kristensen NP (2003) Kastaniemøllet: et kønt nyt skadedyr i Danmark. *Dyr i natur og museum* 1: 9–11.
- Karsholt O, Nieuwerkerken van EJ (2004) Lepidoptera, Moths. Fauna Europaea version 1.3. <http://www.faunaeur.org>.
- Karsholt O, Sinev SY (2004) Contribution to the Lepidoptera fauna of the Madeira Islands. Part 4. Blastobasidae. *Beiträge zur Entomologie* 54: 387–463.
- Karsholt O, Vieira V (2005) Lepidoptera. In: Borges PAV, Cunha R, Gabriel R, Frias Martins A, Silva L and Vieira V (Eds) *A list of the terrestrial fauna (Mollusca and Arthropoda) and flora (bryophyta, Pteridophyta and Spermatophyta) from the Azores*. Direcção Regional do Ambiente and Universidade das Açores, 317.
- Karvonen J (1983) *Cryptophlebia leucotreta* imported into Finland (Lepidoptera, Tortricidae). *Notulae Entomologicae* 63: 94.
- Katsogiannos P, Koveos DS (2001) Integrated *Prunus* pest control in an integrated crop management. *III Panellenic Meeting of Plant Protection, Larissa-Greece*, p. 165–178.
- Kenis M (2005) Insects. In: Wittenberg R (Ed) *An inventory of alien species and their threat to biodiversity and economy in Switzerland*. CABI Bioscience Switzerland centre, 131–212.
- Kenis M, Auger-Rozenberg M-A, Roques A, Timms L, Péré C, Cock MJW, Settele J, Augustin S, Lopez-Vaamonde C (2009) Ecological effects of invasive alien insects. *Biological Invasions* 11: 21–45.
- Kimber I (2008) UK Moths. Your Guide to the Moths of Great Britain and Ireland. <http://www.ukmoths.org.uk/index.php>.
- King GE (2000) Aportación al conocimiento de los Pterophoridae en España: *Lantanophaga pusillidactyla* (Walker, 1864), especie nueva para España y para Europa. *SHILAP Revista de Lepidopterologia* 28: 341–343.
- Klimesch J (1979) Beiträge zur Kenntnis der Microlepidopteren-Fauna des Kanarischen Archipels. 2. Beitrag. Bucculatricidae, Gracillariidae, Phyllocnistidae, Lyonetiidae. *Vieraea* 8: 147–186.
- Kollar (1854) *Bombyx Cynthia*. *Verhandlungen des zoologisch-botanischen Vereins in Wien* 4: 114.
- Koster JC, Sinev SY (2003) Momphidae, Batrachedridae, Stathmopodidae, Agonoxenidae, Cosmopterigidae, Chrysopeleidae. Vol 5 In: P. Huemer, Karsholt O and Lyneborg L (Eds) *Microlepidoptera of Europe*, pp. 1–387.
- Koster JC, Sammut P (2006) Faunistic notes on Momphidae, Batrachedridae, Statmopodidae and Cosmopterigidae from the Maltese Islands. *Nota Lepidopterologica* 29: 49–63.
- Kristensen NP, Skalski AW (1999) Phylogeny and paleontology. In: Kristensen NP (Ed) *Lepidoptera: Moths and Butterflies. 1. Evolution, Systematics, and Biogeography*. Berlin and New York: De Gruyter, 7–25.

- Kuchlein JH, van Lettow C (1999) The Dutch species of *Borkhausenia*, with *B. nefrax* as an addition to the Dutch list (Lepidoptera: Oecophoridae). *Entomologische Berichten* 59: 23–29.
- Kullberg J, Mikkola K (2001) Amerikasta kotoisin oleva koisalaji *Vitula edmandsii* (Packard, 1865) (Pyralidae) leviämässä Suomeen [*Vitula edmandsii* (Packard, 1865) (Pyralidae) new to Finland]. *Baptria* 26: 6–7.
- Kyparissoudas DS (1989) Control of *Cydia molesta* (Busck) by mating disruption using Iso-mate-M pheromone dispensers in northern Greece. *Entomologia Hellenica* 7: 3–6.
- Łabanowski G, Soika G (1998) Szrotówek kasztanowcowiaczek zagraża kasztanowcom w Polsce. *Ochrona Roślin* 12: 12.
- Langmaid J, Porter J, Collins GA (2007) *Bucculatrix ulmifoliae* M. Hering, 1931 (Lep.: Bucculatricidae) resident in England. *Entomologist's Record and Journal of Variation* 119: 195–201.
- Laštůvka Z, Liška J, Vávra J, Elsner V, Laštůvka A, Marek J, Dufek T, Dvořák M, Kopeček F, Petruš M, Skyva J, Vítek, P (1994) Faunistic records from the Czech Republic - 18. *Klapalekiana* 30: 197–206.
- Leclant F (1969) Sur la Biologie d'*Epinotia* (*Evetria*) *cedricida* Diakonoff. Grave ravageur du Cèdre en France. (Lep. Tortricidae). *Annales de la Société Entomologique de France* 5: 397–405.
- Lederer J (1863) Verzeichnis der von Herrn Johann und Frau Ludmilla Haberhauer 1861 und 1862 bei Warna in Bulgarien und Slivno in Rumelien gesammelten Lepidopteren. *Wiener Entomologische Monatschrift* 7: 17–47.
- Lepidopterologen Arbeitsgruppe (2000) *Schmetterlinge und ihre Lebensräume: Arten - Gefährdung - Schutz. Tagfalter und ihre Lebensräume, Arten*. Verlag: Pro Natura, 914 pp.
- Letellier M (2004) Une noctuelle exotique, *Acontia crocata* (Guenée, 1852), capturée dans les Deux-Sèvres (Lepidoptera, Noctuidae, Acontiinae). *Alexanor* 23: 45–47.
- Lhomme L (1946–1963) Microlépidoptères, Deuxième partie (fasc. 4–7 Tineina). *Catalogue des Lépidoptères de France et de Belgique. Volume II*. Paris: L. Lhomme, 489–1253.
- Lindeman KE (1880) O povrezhdenii zeren khlebnykh zlakov v Kubanskoj oblasti mol'yu *Gelechia cerealella*. *Zemledel'cheskaya gazeta* 37–38: 611–613.
- Linnaeus C (1758) *Systema nature per regna tria natura, secundum classes, ordines, genera, species, cum characteribus, differentiis, synonymis, locis*. Holmiae: Laurentii Salvii, 824 pp.
- Liotta G, Mineo G (1963) Osservazioni sulla biologia del *Prays citri* Mill. in Sicilia (Tignola degli agrumi o verme della zagara), Lep. Yponomeutidae (II nota). *Bollettino dell'Istituto di Entomologia Agraria e dell'Osservatorio di Fitopatologia di Palermo* 5: 75–104.
- Luciano P, Lentini A, Battisti A (2007) Prima segnalazione di *Traumatocampa pityocampa* per La Sardegna. [First record of *Traumatocampa pityocampa* in Sardinia]. *Proceedings XXXI Congresso Nazionale Italiano di Entomologia, Campobasso*, p. 273.
- Luig J, Kesküla T (1995) Catalogus lepidopterorum Estoniae. Tartu Eesti liblikaliste nimestik, 130 pp.
- Maček J (1968) Listni zavrtači Slovenije. II (The leaf miners of Slovenia II). *Zbornik Biotehničke fakultete, Kmetijstvo* 15 A: 55–59.
- Maček J (1976) Untersuchungen zur hyponomologischen Fauna Sloweniens. II. *Acta Entomologica Jugoslavica* 12: 59–65.

- Maček J (1982) Listni zavrtači Slovenije. XII. *Zbornik Biotehniške fakultete, Kmetijstvo* 39: 173–180.
- Mallet J (2007) The Lepidoptera Taxome Project Draft Proposals and Information. <http://www.ucl.ac.uk/taxome/lepnos.html>.
- Marabuto E (2006) The occurrence of a neotropical hawkmoth in Portugal: *Agrius cingulatus* (Fabricius, 1775) (Lep.: Sphingidae). *Boletín Sociedad Entomológica Aragonesa* 38: 163–166.
- Marek J, Laštůvka A, Vávra J (1991) Faunistic records from Czechoslovakia. *Acta Entomologica Bohemoslovaca* 88: 217–222.
- Marek J, Bártová E (1998) *Duponchelia fovealis* Zeller, 1847, nový škůdce skleníkových rostlin v České republice [*Duponchelia fovealis* Zeller, 1847, a new pest of glasshouse plants in the Czech Republic] (Lepidoptera, Pyralidae, Pyraustinae). *Plant Protection Science* 34: 151–152.
- Mariani M (1941–43) Fauna Lepidopterorum Italiae. Parte I. Catalogo ragionato dei Lepidoteri d' Italia. *Giornale di Scienze naturali ed economiche, Palermo* 42 (1940–41) (Mem. 3): 1–237.
- Martin M (1991) Catalogus Microlepidopterorum Estoniae. Tartu: Eesti liblikaliste nimestik, 56 pp.
- Martinez M, Coutin R (1985) Un nouveau ravageur occasionnel: la phalène americaine des plantes seches. *Phytoma. La Défense des Végétaux* 368: 40–41.
- Mehl R (1977) Sommerflugler som forekommer i hus og lagrede varer i Norge. *Atalanta norvegica* 3: 41–48.
- Mehl R (1979) Fikenmøll, *Ephestia figuliella*, *Ephestia calidella* og johannesbrødmøll, *Ectomye-lois ceratoniae*, (Lepidoptera: Phycitidae) i importerte matvarer i Norge. *Atalanta norvegica* 3: 107–110.
- Mendes C (1904) Lepidoptera do Portugal. II. Lepidopteros da região de S. Fiel (Beira Baixa). *Brotéria, Série Zoológica* 3: 223–254.
- Mendes C (1905) Lepidoptera do Portugal. II. Lepidopteros da região de S. Fiel (Beira Baixa). *Brotéria, Série Zoológica* 4: 166–177.
- Mendes C (1910) Lepidopteros de Portugal. I. Lepidópteros dos Arredores de Torres Vedras. *Brotéria, Série Zoológica* 9: 110–129.
- Mihelakis SE (1997) *Phyllocnistis citrella* Stainton, Gracillariidae, the new insect pest in our citrus groves. *VI National Entomological Congress in Greece*
- Mikkola K, Ståhls G (2008) Morphological and molecular taxonomy of *Dendrolimus sibiricus* Chetverikov stat.rev. and allied lappet moths (Lepidoptera: Lasiocampidae), with description of a new species. *Entomologica Fennica* 19: 66–85.
- Milevoj L, Maček J (1997) Roßkastanien-Miniermotte (*Cameraria ohridella*) in Slowenien. *Nachrichtenblatt des Deutschen Pflanzenschutzdienstes (Braunschweig)* 49: 14–15.
- Moffat CB (1897) *Bupalus piniaria* in Ireland. *The Irish Naturalist* 6: 283.
- Montagud Alario S (2004) *Paysandisia archon* (Burmeister, 1880) (Lepidoptera, Castniidae), nuevas localizaciones en la Península Ibérica y su gestión. *Boletín Sociedad Entomológica Aragonesa* 34: 237–246.
- Montermini A (1985) Quel lepidottero vorace sempre in viaggio. *Terra e Vita* 34: 21.

- Nash DR, Agassiz DJL, Godfray HCJ, Lawton JH (1995) The pattern of spread of invading species: two leaf-mining moths colonizing Great Britain. *Journal of Animal Ecology* 64: 225–233.
- Nash S (2003) *Earias vittella* (Fabricius) (Lep.: Noctuidae) the first occurrence of wild-caught moths in Europe. *Entomologist's Record and Journal of Variation* 115: 187–188.
- Naves C (1995) Een recente vondst van *Idaea inquinata* in Nederland (Lepidoptera: Geometridae). *Entomologische Berichten* 55: 5.
- Neves VC, Fraga JC, Schäfer H, Vieira V, Sousa B, Borges PV (2001) The occurrence of the Monarch butterfly, *Danaus plexippus* L. in the Azores, with a brief review of its biology. *Arquipélago Life and Marine Sciences* 18A: 17–24.
- Nieukerken van EJ, Lastuvka A, Lastuvka Z (2004) Annotated catalogue of the Nepticulidae and Opostegidae of the Iberian Peninsula. *SHILAP Revista de Lepidopterologia* 32: 211–260.
- Nieukerken van EJ, Gielis C, Huisman KJ, Koster JC, Kuchlein JH, Wolf van der HW, Wolshrijn JB (1993) Nieuwe en interessante Microlepidoptera uit Nederland (Lepidoptera). *Nederlandse faunistische Mededelingen* 5: 47–62.
- Noreika R (1998) *Phyllonorycter issikii* (Kumata) (Lepidoptera, Gracillariidae) in Lithuania. *Acta Zoologica Lituanica* 8: 34–37.
- Nuss M (2010) Global Information System of Pyraloidea (Insecta: Lepidoptera). [http://www.pyraloidea.org/globiz\\_start/index\\_start.html](http://www.pyraloidea.org/globiz_start/index_start.html).
- Nyst RH (2004) Quand l'Afrique fait du tourisme sous la forme de *Sceliodes laisalis* (Lepidoptera). *Phegea* 32: 147–148.
- OEPP/Eppo (2005) *Tecia (Scrobipalopsis) solanivora* (Lepidoptera, Gelechiidae). *Bulletin OEPP/Eppo Bulletin. Data sheets on quarantine pests* 35: 399–401.
- Olivella E (2001) *Phyllonorycter robiniella* (Clemens, 1859) arriba a la península Ibérica (Lepidoptera: Gracillariidae). *Butlletí de la Societat Catalana de Lepidopterologia* 87: 35–38.
- Opheim M, Fjeldså A (1983) The Lepidoptera of Norway. Check-List. Part IV. Tineoidea, Zygaenoidea, Cossioidea and Incurvariinae. Oslo: Norsk Lepidopterologisk Selskap, 25 pp.
- Ortu S, Delrio G (1995) La minatrice serpentina degli agrumi in Italia: *Phyllocnistis citrella* Stainton (Lep.: Gracillariidae: Phyllocnistinae). *Informatore Fitopatologico* 3: 38–41.
- Ostrauskas H, Taluntyte L (2004) Insects of stored plant products in Lithuania. *Ekologija* 4: 50–57.
- Palionis A (1932) Beitrag zur Kenntnis der Lepidopterenfauna Litauens [Indėlis Lietuvos drugiams pažinti]. Kaunas: Lietuvos universitetas, 187 pp.
- Palm E (1986) Nordeuropas pyralider. *Danmarks Dyreliv* 3: 1–287.
- Paoli G (1922) Un lepidottero nuovo per la fauna italiana (*Laspeyresia molesta* Busck). *Bollettino della Società Entomologica Italiana* 54: 122–126.
- Passos de Carvalho J, Corley MFV (1995) Additions to the Lepidoptera of Algarve, Portugal (Insecta: Lepidoptera). *SHILAP Revista de Lepidopterologia* 23: 191–230.
- Pelham-Clinton EC (1985) Tineidae. In: Heath J and Emmet AM (Eds) *The Moths and Butterflies of Great Britain and Ireland. Vol. 2. Cossidae-Heliodinidae*. Colchester: Harley Books, 152–207.
- Péré C, Augustin S, Rumen T, Peng L-H, Turlings TCJ, Kenis M (2009) Species richness and abundance of native leaf miners are affected by the presence of the invasive horse-chestnut leaf miner. *Biological Invasions* DOI 10.1007/s10530-009-9518-0



- Peterson NA, Nilssen AC (2004) Late autumn eclosion in the winter moth *Operophtera brumata*: compromise of selective forces in life-cycle timing. *Ecological Entomology* 23: 417–426.
- Petersen W (1924) Lepidopteren-Fauna von Estland (Eesti). Talinn: Bildungsministerium der Freistaates Eesti, 589 pp.
- Petralia L (1949) Contributo alle maggiori conoscenze sulla biologia della Tignola delle patate (*Gnorimoschema (Phthorimaea) operculella* Zell.). *Bollettino dell'Associazione Romana di Entomologia* 4: 21–28.
- Pittaway AR (1993) The Hawkmoths of the Western Palaearctic. London & Colchester: Harley Books in association with the Natural History Museum, London, 240 pp.
- Pittaway AR (2008) Saturniidae of Europe. [http://tpittaway.tripod.com/silk/a\\_yam.htm](http://tpittaway.tripod.com/silk/a_yam.htm).
- Poltavsky AN, Artokhin KS (2006) *Tarachidia candefacta* (Lepidoptera: Noctuidae) in the south of European Russia. *Phegea* 34: 41–44.
- Posenato G, Girolami V, Zangheri S (1997) La minatrice americana, un nuovo fillominatore della vite. *L'Informatore Agrario* 15: 75–77.
- Povolny D (1996) Gelechiidae, Gnorimoschemini. Stenstrup: Apollo Books, 380 pp.
- Prinz J (1907) Bericht der Sektion für Lepidopterologie. Versammlung am 4. Januar 1907. *Verhandlungen der kaiserlich-königlichen zoologischen-botanischen Gesellschaft in Wien* 57: 27–33.
- Quacchia A, Ferracini C, Bonelli S, Balletto E, Alma A (2008) Can the Geranium Bronze, *Cacyreus marshalli*, become a threat for European biodiversity? *Biodiversity and Conservation* 17: 1429–1437.
- Quajat E (1904) Dei bozzoli più pregevoli che preparano i lepidotteri setiferi. Padova-Verona: Fratelli Drucker, 170 pp.
- Rebel H (1901) [Microlepidoptera section in «Famil. Papilionidae-Hepialidae»]. In: Staudinger O and Rebel H (Eds) *Catalog der Lepidopteren des palaearktischen Faunengebietes*. Berlin: Friedländer & Sohn. 411 pp.262.
- Rebel H (1903) Studien über die Lepidopterenfauna der Balkänlander I Tail Bulgarien und Ostrumelien. *Annalen des Kaiserlich-Königlichen Naturhistorischen Hofmuseums, Wien* 18: 123–347.
- Reid J (2008) Raspberry Clearwing moth *Pennisetia hylaeformis* (Laspeyres, 1801) in South Cambridgeshire and North Hertfordshire. *Entomologist's Record and Journal of Variation* 120: 165–170.
- Reiprich A (1980) K bionómii rúrkovčeka *Coleophora spiraeella* Rebel, 1916 (Lepidoptera Coleophoridae). *Zprávy Československé Společnosti Entomologické Při ČSAV* 16: 98–100.
- Reiprich A, Janovský M (1981) Prehľad nových a pozoruhodných druhov motýľov zo Slovenska z rokov 1973–1977 (Ďalšie poznámky k Prodrumu lepidopter Slovenska - Hrubý 1964). *Zprávy Československé Společnosti Entomologické Při ČSAV* 17: 103–113.
- Reiprich A (1989) Prírastky motýľej fauny na Slovensku v období rokov 1985–1988, 4.časť. *Zprávy Československé Společnosti Entomologické Při ČSAV* 1: 6–11.
- Reiprich A, Okáli I (1989) Dodatky k Prodrumu Lepidopter Slovenska zväzok. Bratislava: Veda, 109 pp.
- Reiprich A (1990) Prírastky motýľej fauny na Slovensku v roku 1989. *Zprávy Československé Společnosti Entomologické Při ČSAV* 2: 1–7.

- Reiprich A (1991) Prírastky motýlej fauny na Slovensku v roku 1990. *Zprávy Československé Společnosti Entomologické Při ČSAV* 3: 20–23.
- Reiprich A (1992) Prírastky motýlej fauny na Slovensku v roku 1991. *Zprávy Československé Společnosti Entomologické Při ČSAV* 4: 7–14.
- Rennwald K (2008) Ein Neubürger in Deutschland an Buchsbaum - Der Buchsbaumzünsler *Glyphodes perspectalis* [<http://www.klaus-rennwald.de/neubuerger/index.html>].
- Reynaud P, Chapin E, Hostachy B, Drescher J, Blanchon F, Vidal C (2002) Deux nouveaux papillons à l'assaut des palmiers de la Côte d'Azur. *Paysandisia archon* et *Pseudarenipses insularum*. *Phytoma. La Défense des Végétaux* 550: 18–21.
- Rezbanyai-Reser L (1983) Über *Caradrina*-Arten, insbesondere über *C. ingrata* Staudinger 1897, eine für die Schweiz und für Mitteleuropa neue mediterrane Art (Lep., Noctuidae). *Entomologische Berichte Luzern* 10: 99–109.
- Rezbanyai-Reser L (1991) *Hyphantria cunea* Drury, 1773, und *Noctua tirrenica* Biebinger, Speidel & Hanigk, 1983, im Südtessin, neu für die Schweiz (Lep.: Arctiidae, Noctuidae). *Entomologische Berichte Luzern* 26: 94–96, 135–152.
- Rezbanyai-Reser L, Kádár M, Petrányi G, Kocsy G (2004) Report Euro-moth-nights 2004. [http://euromothnights.uw.hu/1emn\\_2004\\_bilanz\\_english.pdf](http://euromothnights.uw.hu/1emn_2004_bilanz_english.pdf).
- Rezbanyai-Reser L, Kádár M, Schreiber H (2005) Report Euro-moth-nights. [http://euromothnights.uw.hu/2emn\\_2005\\_bilanz\\_english.pdf](http://euromothnights.uw.hu/2emn_2005_bilanz_english.pdf).
- Riedl T (1990) Sur quelques Gelechioidea conservés au Musée Zoologique de Copenhague (Lepidoptera) (Partie II). *Nota Lepidopterologica* 12: 319–327.
- Robinson GS, Nielsen ES (1989) Tineid genera of Australia. Melbourne: CSIRO PUBLISHING, 344 pp.
- Robinson GS, Ackery PR, Kitching IJ, Beccaloni GW, Hernández LM (2010) *HOSTS – a Database of the World's Lepidopteran Hostplants*. <http://www.nhm.ac.uk/researchcuration/research/projects/hostplants/>.
- Roche J (1982) *Zophodia convolutella* (Huebner) (Lep.: Pyralidae) new to Britain. *Entomologist's Record and Journal of Variation* 96: 117.
- Roesler RU (1973) Phycitinae. 1. Teilband: Trifine Acrobasiina. In: Amsel HG, Gregor F and Reisser H (eds) *Microlepidoptera Palaearctica*. Vienna and Munich: Verlag Georg Fromme & Co., 752.
- Roll E, Dayan T, Simberloff D (2007) Non-indigenous species in Israel and adjacent areas. *Biological Invasions* 9: 629–643.
- Roques A, Auger-Rozenberg, MA, Boivins, S (2006) A lack of native congeners may limit colonization of introduced conifers by indigenous insects in Europe. *Canadian Journal of Forest Research* 36: 299–313.
- Roques A, Rabitsch W, Rasplus J, Lopez-Vaamonde C, Nentwig W, Kenis M (2008) Alien terrestrial invertebrates of Europe. In: Nentwig W, Hulme P, Pysek P and Vila M (Eds) *Handbook of Alien Species in Europe*. Dordrecht: Springer-Verlag, 63–79.
- Russo G (1939) Contributo alla conoscenza degli insetti dannosi al cotone nell'Africa orientale italiana. I Lepidotteri. *Bollettino Regio Laboratorio di Entomologia Agraria. Portici* 3: 105–220.

- Sammut P (2000) *Kullana Kulturali* 12 - II-Lepidoptera. Malta: Publikazzjonijiet Indipendenza, 246 pp.
- Sammut P (2003) *Arenipses sabella* (Hampson, 1901) and *Myelois circumvoluta* (Fourcroy, 1785) (Insecta: Lepidoptera: Pyralidae) new to the Lepidoptero fauna of the Maltese Islands. *Central Mediterranean Naturalist* 4: 49–50.
- Sammut P (2005) The correct identity of three Pyralidae moths from the Maltese islands (Lepidoptera Pyralidae) *SHILAP Revista de Lepidopterologia* 33: 235–238.
- Sammut P (2007) *Cacyreus marshalli* Butler, [1898] reaches the Maltese Islands (Lepidoptera, Lycaenidae). *SHILAP Revista de Lepidopterologia* 35: 317–319.
- Sarto i Monteys V (1992) Spread of the Southern African Lycaenid butterfly, *Cacyreus marshalli* Butler, 1898, (LEP: Lycaenidae) in the Balearic Archipelago (Spain) and considerations on its likely introduction to continental Europe. *Journal of Research on the Lepidoptera* 31: 24–34.
- Sarto i Monteys V (2002) The discovery, description and taxonomy of *Paysandisia archon* (Burmeister, 1880), a castniid species recently found in southwestern Europe (Castniidae). *Nota Lepidopterologica* 25: 3–16.
- Savela M (2010) <http://ftp.funet.fi/pub/sci/bio/life/warp/album-Silvonen-3.html>.
- Šefrová H (1998) Výskyt klíněnky hlohyňové (*Phyllonorycter leucographellus*) v České republice. *Plant Protection Science* 34: 112–113.
- Šefrová H (1999) On larval morphology, biology and distribution of *Phyllonorycter leucographellus* (Zeller) (Lepidoptera, Gracillariidae). *Acta Universitatis Agriculturae et Silviculturae Mendelianae Brunensis* 47: 57–63.
- Šefrová H (2001) *Phyllonorycter platani* (Staudinger) - a review of its dispersal history in Europe (Lepidoptera, Gracillariidae). *Acta Universitatis Agriculturae et Silviculturae Mendelianae Brunensis* 49: 71–75.
- Šefrová H, Laštůvka Z (2001) Dispersal of the horse-chestnut leafminer, *Cameraria ohridella* Deschka & Dimić, 1986, in Europe: its course, ways and causes (Lepidoptera: Gracillariidae). *Entomologische Zeitschrift Stuttgart* 111: 194–198.
- Šefrová H (2002) *Phyllonorycter issikii* (Kumata, 1963) - bionomics, ecological impact and spread in Europe (Lepidoptera, Gracillariidae). *Acta Universitatis Agriculturae et Silviculturae Mendelianae Brunensis* 50: 99–104.
- Šefrová H (2002) *Phyllonorycter robiniella* (Clemens, 1859) - egg, larva, bionomics and its spread in Europe (Lepidoptera, Gracillariidae). *Acta Universitatis Agriculturae et Silviculturae Mendelianae Brunensis* 50: 7–12.
- Šefrová H, Laštůvka Z (2005) Catalogue of alien animal species in the Czech Republic. *Acta Universitatis Agriculturae et Silviculturae Mendelianae Brunensis* 53: 151–170.
- Seljak G (1995) *Phyllonorycter robiniella* (Clemens), še en nov listni zavrtač robinije v Sloveniji [*Phyllonorycter robiniella* (Clemens), an other new leaf miner of *Robinia* in Slovenia]. *Gozdarski vestnik* 53: 78–82.
- Seljak G (2005) Kačasti listni zavrtač vinske trte (*Phyllocnistis vitegenella* Clemens) že v Sloveniji [*Phyllocnistis vitegenella* Clemens) occurring also in Slovenia]. *SAD, Revija za Sadjarstvo, Vinogradništvo in Vinarstvo* 16: 13–14.

- Seymour PR, Kilby LJ (1978) Insects and other invertebrates intercepted in check inspections of imported material in England & Wales during 1978. *Report of the MAFF Plant Pathology Laboratory* 10: 1–54.
- Shchurov VI (2004) The butterflies and moths fauna (Insecta, Lepidoptera) of Taman Peninsula. *Ekologicheskie problemy Tamanskogo poluostrova*. Krasnodar: Kuban State University, 53–68.
- Siloaho R (2008) *Bucculatrix chrysanthemella* Rebel 1896 (Bucculatricidae) - Suomesta ja Man-ner - Euroopasta aiemmin havaitsematta jäänyt töyhtökoilaji. *Baptria* 4: 142–143.
- Silvestri F (1943) *Compendio di Entomologia applicata (agraria, forestale, medica, veterinaria)*. Portici: Della Torre, 699 pp.
- Sinev S (2007) New and little known species of gray moths (Lepidoptera, Gelechioidea, Blastobasidae) from Eurasia. *Entomological Review* 87: 1064–1073.
- Sitek J (2003) Faunistic records from the Czech Republic – 169. Lepidoptera: Tineidae, Gelechiidae, Tortricidae. 2 pp. *Klapalekiana* 39: 137–138.
- Skala H (1936) Minen aus Mittel- und Südeuropa. *Zeitschrift des Österreichischen Entomologen-Vereins* 21: 78–79.
- Skala H (1937) Minen aus Mittel- und Südeuropa. *Zeitschrift des Österreichischen Entomologen-Vereins* 22: 10–11; 18–19.
- Škerlavaj V, Munda A (1999) *Argyresthia thuarella* Packard - a new pest of Thuja in Slovenia. *Zbornik predavanj in referatov 4. slovenskega posvetovanja o varstvu rastlin v Portorožu od 3. do 4. Marca 1999, Ljubljana*: Društvo za varstvo rastlin Slovenije, p. 451.
- Skinner B (2009) Colour identification guide to Moths of the British Isles. Stenstrup: Apollo Books, 325 pp.
- Skou P (1986) The Geometroid moths of North Europe (Lepidoptera, Drepanidae and Geometridae). Leiden/Copenhagen: E.J. Brill/Scandinavian Science Press, 348 pp.
- Snellen PCT (1898) Aanteekeningen over Nederlandsche Lepidoptera. 3. *Tijdschrift voor Entomologie* 40: 278–367.
- Speidel W, Nieuwerkerken van EJ, Honey MR, Koster SJC (2007) The exotic pyraloid moth *Diplopeustis pereresalis* (Walker) in the west Palearctic region (Crambidae, Spilomelinae). *Nota Lepidopterologica* 29: 185–192
- Speiser P (1903) Die Schmetterlingsfauna der Provinzen Ost – und Westpreussen. *Beitrage zur Naturkunde Preussens* 9: 1–148.
- Stanev M, Kaitazov A (1962) Studies on the biology, ecology and means for the control of the potato-moth *Gnorimoschema (Phthorimaea) operculella* Zeller in Bulgaria. *Bulletin of the Research Institute of Plant Protection* 3: 49–89.
- Starý B (1936) Studie o minujících motýlech na Slovensku. *Příroda* 29: 1–3, 90–95.
- Sterneck J, Zimmermann F (1933) *Prodromus der Schmetterlingsfauna Böhmens. II. Teil: Microlepidoptera*. Karlsbad: Selbstverlag, 168 pp.
- Stigter H, Frankenhuyzen Av (1991) *Phyllonorycter leucographella*, een voor Nederland nieuwe bladmineerder (Lepidoptera: Gracillariidae). *Entomologische Berichten* 51: 129–135.
- Stigter H, Frankenhuyzen Av, Moraal LG (2000) De paardenkastanjemineermot, *Cameraria ohridella*, een nieuwe bladmineerder voor Nederland (Lepidoptera: Gracillariidae). *Entomologische Berichten* 60: 159–163.

- Streito J-C, Martinez M (2005) Nouveaux ravageurs, 41 espèces depuis 2000. point sur les introductions d'insectes ravageurs d'importance agronomique de janvier 2000 à juin 2005. *Phytoma, la défense des végétaux* 586: 16–20.
- Strygina SP, Shutova NN (1966) *Vostochnaya plodozhorka* (The Oriental fruit moth). *Zashchita Rastenii* 8: 26.
- Šumpich J, Míkát M, Maršík L, Dufek T, Marek J, Elsner V (2007) Faunistic records from the Czech Republic - 239. *Klapalekiana* 43: 215–220.
- Surányi P (1946) A féher medveszövölepke és életmódja. *Folia Entomologica Hungarica* 1: 87–90.
- Svensson I (1977) Förändringar i Sveriges storfjärilfauna en tredje tioårsperiod (Lepidoptera). *Entomologisk Tidskrift* 98: 113–122.
- Svensson I (1986) Anmärkningsvärda fynd av Microlepidoptera i Sverige 1985. *Entomologisk Tidskrift* 107: 71–79.
- Svensson I (1992) Anmärkningsvärda fynd av Microlepidoptera i Sverige 1991. *Entomologisk Tidskrift* 113: 36–41.
- Svensson I (2006) Nordens vecklare (The Nordic Tortricidae): (Lepidoptera, Tortricidae). Lund Entomologiska sällskapet i Lund, 349 pp.
- Svensson I (2007) Anmärkningsvärda fynd av småfjärilar (Microlepidoptera) i Sverige 2006. *Entomologisk Tidskrift* 128: 43–57.
- Tapia-Domínguez P (1982) *Danaus chrysippus* (L.) y *D. plexippus* (L.) en la provincia de Málaga. *SHILAP Revista de Lepidopterología* 10: 274.
- Tarmann GM (1998) Die Weinzygaene *Theresimima ampellophaga* (BAYLE-BARELLE 1808) (Lepidoptera, Zygaenidae, Procridinae). Kehrt ein verschwundener Weinschädling zurück? *Stapfia* 55: 57–84.
- Tautel C (2008) *Araeopteron ecphaea* (Hampson, 1914) désormais présent en France continentale (Lep. Noctuidae). *Oreina* 2: 10.
- Thomas JA, Simcox DJ, Clarke RT (2009) Successful conservation of a threatened *Maculinea* butterfly. *Science* 325: 80–83.
- Thygesen T (1963) Importerede stiklinger af nelliker og chrysanthemum - plantepatologisk set. *Gartner Tidende* 79: 2.
- Thygesen T, Esbjerg P, Eiberg H (1965) Dynamics of the western spruce budworm (Lepidoptera: Tortricidae) *Hilgardia* 36: 391.
- Tokár Z, Slamka F, Pastorális G (1999) New and interesting records of Lepidoptera from Slovakia in 1995–1997. *Entomofauna Carpathica* 11: 43–57.
- Tokár Z, Richter I, Pastorális G, Slamka F (2002) New and interesting records of Lepidoptera of Slovakia from the years 1998–2001. *Entomofauna Carpathica* 14: 1–11.
- Tomov R (2003) *Phyllonorycter robiniella* (Clemens, 1859) (Lepidoptera, Gracillariidae), a new pest on black locust *Robinia pseudoacacia* L. In Bulgaria. *Proceedings scientific papers, The 50th anniversary of University of Forestry, Sofia*, p. 105–107.
- Torp R (1987) Ny dansk spinder: *Hyphantria cunea* Drury f. *textor* Harr. *Lepidoptera* 5: 83–86.
- Torstenius S, Lindmark H (2000) *Synanthedon andrenaeformis* (Laspeyres 1801), Lepidoptera: Sesiidae, en för Sverige ny glasvinge. *Entomologisk Tidskrift* 121: 21–22.
- Trematerra P (1988) *Paramyelois transitella* (Walker) lepidottero americano presente nelle noci importate dalla California. *Informatore Fitopatologico* 38: 51–55.



- Trematerra P, Zilli A, Valentini V, Mazzei P (1997) *Cacyreus marshalli* un lepidottero sudafricano dannoso ai gerani in Italia. *Informatore fitopatologico* 7: 2–6.
- Troukens W (1991) *Cacyreus marshalli* Butler, 1898 aangetroffen in België (Lepidoptera: Lycaenidae). *Phegea* 19: 129–131.
- Tschorbadjew P (1930) Saobschtenie vurhu nyakoi vredni nasekomi. *Izvestiya na Balgarskoto entomologichesko druzestvo* 5: 35–37.
- Tzalev M (1979) Po-golyamo vnimanie na borbata s iztochniya plodov tchervey. *Plant protection* 6: 5.
- Ulmer G, Strand E, Horn W (1918) Über W. Horns Litauische entomologische Kriegsausbente 1916 (besonders Trichoptera, Ephemeroptera, Lepidoptera und Hymenoptera). *Entomologische Mitteilungen* 7: 160–161.
- Urbaneja A, Vercher R, Navarro V, García Mari F, Porcuna JL (2007) La polilla del tomate, *Tuta absoluta*. *Phytoma-España* 194: 16–23.
- Valade R, Kenis M, Hernandez-Lopez A, Augustin S, Mari Mena N, Magnoux E, Rougerie R, Lakatos F, Roques A, Lopez-Vaamonde C (2009) Mitochondrial and microsatellite DNA markers reveal a Balkan origin for the highly invasive horse-chestnut leaf miner *Cameraria ohridella* (Lepidoptera, Gracillariidae). *Molecular Ecology* 18: 3458–3470.
- Valletta A (1949) Further moth captures from Malta. *Entomologist's Monthly Magazine* 85: 96.
- Vane-Wright RI (1993) The Columbus hypothesis: an explanation for the dramatic 19th century range expansion of the monarch butterfly. In: Malcolm SB and Zalucki MP (Eds) *Biology and conservation of the monarch butterfly*. Los Angeles: Natural History Museum of Los Angeles County, 179–187.
- Vargas HA (2007) *Megalorhipida leucodactyla* (Fabricius) (Lepidoptera: Pterophoridae): first distribution record from Chile and new host plant record. *Neotropical Entomology* 36: 476–477.
- Vidano C (1970) Foglioline di *Robinia pseudoacacia* con mine di un Microlepidottero nuovo per l'Italia. *Apicoltore Moderno* 61: 1–2.
- Vives Moreno A (2003) Una tribu, ocho géneros y dieciocho especies nuevos para la fauna española. *Ypsolophila cajaliella* Vives sp.n. para la ciencia en España (Insecta: Lepidoptera). *SHILAP Revista de Lepidopterologia* 31: 93–110.
- Vlach V (1938) Příspěvek k soupisu českých Microlepidopter [Contribution to the list of the Czech Microlepidoptera]. *Ceskoslovenská společnost entomologická* 35: 29–30
- Vrabec V, Heřman P (2006) *Elophila manilensis* (Hampson, 1917), p. . In: Mlíkovský J and Stýblo P (eds) *Alien species of fauna and flora of the Czech Republic*. Praha: ČSOP, 300–301.
- Vuure Jv (1981) *Lithophane leautieri* (Boisduval), nieuw voor de Nederlandse fauna (Lep.: Noctuidae). *Entomologische Berichten* 41: 122–123.
- Wagner D, Ferguson DC, Glaser JD (2003) *Sclerocona acutella* (Eversmann) (Crambidae: Pyraustinae), naturalized along the eastern seaboard. *Journal of Lepidopterists' Society* 57: 270–273.
- Walsingham TdG (1910) Madeiran Tineina (Lepidoptera). *Entomologist's Monthly Magazine* 46: 257–259.
- Waring P, Townsend M, Lewington R (2003) Field Guide to the Moths of Great Britain and Ireland. Gillingham, Dorset: British Wildlife Publishing, 432 pp.

- Warren MS, Hill JK, Thomas JA, Asher J, Fox R, Huntley B, Roy DB, Telfer MG, Jeffcoate S, Harding P, Jeffcoate G, Willis SG, Greatorex-Davies JN, Moss D, Thomas CD (2001) Rapid responses of British butterflies to opposing forces of climate and habitat change. *Nature* 412: 65–69.
- Weidner H (1971) Vorratsschädlinge, Bestimmungstabellen der Vorratsschädlinge und des Hausungeziefers Mitteleuropas. Stuttgart, New York: G. Fischer, 328 pp.
- Whitebread SE (1990) *Phyllonorycter robinella* (Clemens, 1859) in Europe (Lepidoptera, Gracillariidae). *Nota Lepidopterologica* 12: 344–353.
- Wolff NL (1953) Sommerfuglelarver importeret med bananer. *Entomologiske Meddelelser* 26: 512–521.
- Wolff NL (1969) *Sterrhia inquinata* Scop. (Lep., Geometridae) i Danmark. *Indeks for Flora og Fauna 1890–1994*, 75: 31–32.
- Wolff NL (1971) Lepidoptera. *The Zoology of Iceland* 3: 1–193.
- Yaroshenko VA (1972) Biologiya amerikanskoi beloi babochki i mery bor'by s nei. *Nauchnye trudy Kubanskogo Universiteta* 151: 61–91.
- Zagulajev AK (1982) The potato moth - *Phthorimaea operculella* Zll. (Lepidoptera, Gelechiidae). *Entomologicheskoe Obozrenie* 61: 817–820.
- Zangheri S, Cavalloro R (1971) Sulla presenza in Italia di *Epichoristodes acerbella* (Walker) (Lepidoptera Tortricidae). *Bolletino della Società Entomologica Italiana* 103: 186–190.
- Zilli A (1997) Lepidoptera. In: Zapparoli M (Ed) *Gli Insetti di Roma*. Roma: Fratelli Palombi Editori, 294–311.
- Zolnir M (1977) Invertarizacija sladiscnih skodljivcev: porocilo za leto 1975 in koncno porocilo. Zalec: RSS, 27 pp.
- Zverezomb-Zubowsky EV (1918) Kratkij otchet o deyatel'nosti Donskogo byuro po bor'be s vreditelyami sel'skokhozyaistvennykh rastenij v 1917 godu. *Rostov-na-Donu*: 1–36.

**Table 11.1.** List and characteristics of the lepidopteran species alien to Europe. Status: **A** Alien to Europe **C** cryptogenic species. Country codes abbreviations refer to ISO 3166 (see appendix I). Habitat abbreviations refer to EUNIS (see appendix II). Last update 01/06/2009

Family Species	Status	Regime	Native range	1 <sup>st</sup> record in Europe and country	Invaded countries	Alien Habitat	Hosts	References
<b>Arctiidae</b>								
<i>Hypbaantria cunea</i> (Drury, 1773)	A	Phytophagous	North America	1949, YU	AL, AT, BA, BG, CH, CZ, DE, DK, EE, FR, DE, GR, HR, HU, IT, LT, MD, ME, MK, PL, RO, RS, RU, SI, SK, GB	G5, I1, I2G	Polyphagous on deciduous trees ( <i>Acer negundo</i> , <i>Populus</i> , <i>Morus</i> , <i>Prunus</i> , <i>Juglans</i> )	Buszko and Nowacki (2000), Essl and Rabitsch (2002), Gaedike and Heinicke (1999), Huemer and Rabitsch (2002), Ippolito and Parenzan (1981), Janežič (1968), Karsholt and Nielsen (1998), Luig and Kesküla (1995), Montermini (1985), Rezbanyai-Reser (1991), Šefrová and Laštůvka (2005), Yaroshenko (1972), Surányi (1946), Torp (1987)
<b>Agonoxenidae</b>								
<i>Haplochrois theae</i> (Kusnezov, 1916)	A	Phytophagous	Asia	1915, RU	RU	I1	<i>Thea</i> , <i>Camellia</i>	Demokidov (1916), Koster and Sinev (2003)
<b>Blastobasidae</b>								
<i>Blastobasis adustella</i> Walsingham, 1894	A	Detritivorous	Africa, Macaronesia (PT-MAD)	1902, IE	BE, FR, GB, IE, NL	G5, I2, J6	Decaying vegetal material	Aguiar and Karsholt (2006), De Prins et al. (2009), Karsholt and Sinev (2004)
<i>Blastobasis decolorella</i> (Wollaston, 1858)	A	Detritivorous	Africa, Macaronesia (PT-MAD)	1946, PT	PT	F5, G5, I2, J1, J6	Wide variety of foodstuffs, including leaf-litter, vegetation, and stored products	Cortley et al. (2006), Karsholt and Sinev (2004)
<i>Blastobasis lacticolella</i> Rebel, 1940	A	Detritivorous	Africa, Macaronesia (PT-MAD)	1946, GB	GB, IE	G5, I2, J6	Decaying vegetal material	Aguiar and Karsholt (2006), Karsholt and Sinev (2004)

Family Species	Status	Regime	Native range	1 <sup>st</sup> record in Europe and country	Invaded countries	Alien Habitat	Hosts	References
<i>Blastobasis maroccanella</i> Amsel, 1952	A	Detriti- vorous	Africa, Macaronesia (PT-MAD)	1990, PT	ES, FR, PT	B, F5, G5, I2, J6	Decaying vegetal material	Passos de Carvalho and Corley (1995)
<i>Blastobasis rebeli</i> Karsholt & Sinev, 2004	A	Detriti- vorous	Africa, Macaronesia (PT-MAD)	1998, GB	GB	G5, I2, J6	Decaying vegetal material	Aguiar and Karsholt (2006), Karsholt and Sinev (2004)
<b>Bucculatricidae</b>								
<i>Bucculatrix chrysanthemella</i> (Rebel, 1896)	A	Phyto- phagous	Africa (Macaro- nesia)	2007, IT	FI, FR, IT	I2	<i>Argyranthemum frutescens</i>	Cocquempot and Nel (2009), Constanzi et al. (2008), Klimesch (1979)
<b>Castniidae</b>								
<i>Paysandisia archon</i> (Burmeister, 1879)	A	Phyto- phagous	Neotropics (South America)	c.1995, ES	CY, DK, ES, ES-BAL, FR, GR, GR-CRE, IT, IT-SIC, SI	I2, J100	Palm trees ( <i>Phoenix</i> spp, <i>Thrinix</i> , <i>Chamaerops</i> , <i>Livistona</i> , <i>Trachycarpus</i> , <i>Washingtonia</i> ).	Aguilar et al. (2001), Colazza et al. (2005), Espinosa et al. (2003), Hollingsworth (2004)
<b>Cosmopterigidae</b>								
<i>Anatrachynis simplex</i> (Walsingham, 1891)	A	Phyto- phagous	Asia- Tropical	1999, PT	CY, ES, GB, PT	J1	Polyphagous, cotton, pomegranate fruits	Heckford (2004), Koster and Sinev (2003)
<i>Ascalenia acaciella</i> Chrétien, 1915	A	Phyto- phagous	Africa	2001, MT	MT	I2	<i>Acacia</i>	Koster and Sammut (2006)
<i>Bifascioides leucomelanellus</i> (Rebel, 1917)	A	Phyto- phagous	Africa	2004, MT	MT	I2	<i>Acacia</i>	Koster and Sammut (2006)
<b>Gelechiidae</b>								
<i>Colotoechmites picciella</i> (Kearfott, 1903)	A	Phyto- phagous	North America	1952, GB	AT, CZ, DE, FR, GB, HU, IT, SK	G3, G5, I2	<i>Picea</i>	Essl and Rabitsch (2002), Hill et al. (2005), Huemer and Rabitsch (2002), Reiprich (1991), Šumpich et al. (2007)

Family Species	Status	Regime	Native range	1 <sup>st</sup> record in Europe and country	Invaded countries	Alien Habitat	Hosts	References
<i>Pectinophora gossypiella</i> (Saunders, 1844)	A	Phytophagous	Australasia	1935, IT	AL, BG, ES, GR, GR-CRE, IL, IT, IT-SIC	II	Cotton	Karsholt and Nielsen (1986), Povolny (1996), Roll et al. (2007), Russo (1939)
<i>Phthorimaea operculella</i> (Zeller, 1873)	A	Phytophagous	Neotropics (South America)	1899, MT	AL, AT, BE, BG, DK, ES, GB, GR, HU, IL, IT, IT-SAR, IT-SIC, MK, MT, NL, PT, PT-AZO, PT-MAD, RU, SE, SI	II, J1	Potato, tobacco and other Solanaceae, stored products and fields	Aastrup (1969), Bentinck (1963), Borg (1899), García Mercet (1926), Huemer and Rabitsch (2002), Janežič (1951), Karsholt and Sinev (2004), Mendes (1910), Petralia (1949), Roll et al. (2007), Stanev and Kaitazov (1962), Zagulajev (1982)
<i>Sitotroga cerealella</i> (Olivier, 1789)	A	Grain feeder	Australasia	1790, DE?	AL, AT, BE, BG, BY, CH, CZ, DE, DK, ES, FR, GB, GR, HR, HU, IS, IT, IT-SAR, IT-SIC, LT, MK, MT, NL, NO, PL, PT, PT-AZO, RO, RU, RS, SE, SI, SK, GB	J1	Stored products	Borg (1932), Dei (1871), Glavendekić et al. (2005), Hrubý (1964), Huemer and Rabitsch (2002), Ivinskis (1993), Janežič (1951), Karsholt and Nielsen (1976), Karsholt and Vieira (2005), Lindeman (1880), Mehl (1977), Ostrauskas and Taluntyte (2004), Šefrová and Laštůvka (2005), Snellen (1898), Tschorbadjiev (1930)
<i>Tectia solanivora</i> (Povolny, 1973)	A	Phytophagous	Neotropics	1999, ES-CAN	ES-CAN	II, J1	Potato	OEPP/EPPO (2005)
<i>Tuta absoluta</i> (Meyrick, 1917)	A	Phytophagous	Neotropics	2006, ES	AL, BG, CH, ES, ES-BAL, FR, FR-COR, IT, IT-SIC, LT, MT, SI	II, J1	Tomato	Harizanova et al. (2009), Ostrauskas and Ivinskis (2010), Urbaneja et al. (2007)



Family Species	Status	Regime	Native range	1 <sup>st</sup> record in Europe and country	Invaded countries	Alien Habitat	Hosts	References
<b>Geometridae</b>								
<i>Pseudocoremia suavis</i> Butler, 1879	A	Phytophagous	Australasia (New Zealand)	2007, GB	GB	G3, X25	<i>Nothofagus</i> spp., <i>Podocarpus</i> , <i>Kunzea ericooides</i> , <i>Pinus</i> spp. (mainly <i>P. radiata</i> ) and <i>Pseudotsuga menziesii</i>	James (2008), Skinner (2009)
<b>Gracillariidae</b>								
<i>Caloptilia azaleella</i> (Brants, 1913)	A	Phytophagous	E Asia	1920, NE	AT, BE, CH, CZ, DE, DK, ES, FR, GB, IT, NL, NO, PL, PT, PT-MAD, RU, SE, SI, SK	I2, J100	<i>Rhododendron</i>	Aguilar and Karsholt (2006), Brants (1913), Della Boffa (1931), Emmet et al. (1985), Gomboc (2003), Huemer and Rabitsch (2002), Jørgensen (1982), Lhomme (1946–1963), Opheim and Fjeldså (1983), Šefrová and Laštůvka (2005), Starý (1936)
<i>Parectopa robinella</i> Clemens, 1863	A	Phytophagous	North America	1970, IT	AT, BG, CH, CZ, DE, ES, FR, HR, HU, IT, LT, MK, PL, RO, RS, SI, SK, GB	I2, FA, G1, G5	<i>Robinia</i>	Buszko and Nowacki (2000), Huemer and Rabitsch (2002), Ivinskis and Rimsaite (2008), Maček (1982), Marek et al. (1991), Olivella (2001), Vidano (1970)
<i>Phyllocnistis citrella</i> (Stainton, 1856)	A	Phytophagous	Asia	1993, ES	AL, CY, ES, FR, GR, IL, IT, IT-SAR, IT-SIC, MT, PT, PT-AZO, PT-MAD, RS	I2	<i>Citrus</i>	de Carvalho and Aguiar (1997), Corley et al. (2000), Garijo and Garcia (1994), Karsholt and Vieira (2005), Mihelakis (1997), Ortu and Delrio (1995), Roll et al. (2007)
<i>Phyllocnistis vitegenella</i> Clemens, 1859	A	Phytophagous	North America	1997, IT	AL, IT, SI	I1	<i>Vitis</i>	Posenato et al. (1997), Seljak (2005)

Family Species	Status	Regime	Native range	1 <sup>st</sup> record in Europe and country	Invaded countries	Alien Habitat	Hosts	References
<i>Phyllonorycter issikii</i> (Kumata, 1963)	A	Phytophagous	E Asia	1985, RU	AT, BG, BY, CZ, DE, EE, FI, HR, HU, LT, PL, RO, RU, SI, SK, GB	I2, FA, G1, G5	<i>Tilia</i>	Bednova and Belov (1999), Buszko and Nowacki (2000), Ermolaev and Motoshkova (2008), Gomboc et al. (in press), Huemer and Rabitsch (2002), Noreika (1998), Šefrová (2002a), Tokár et al. (2002)
<i>Phyllonorycter leucographella</i> (Zeller, 1850)	A	Phytophagous	SW Asia	1850, IT	AT, BE, BG, CH, DE, CZ, DK, FR, GB, GR, HR, HU, IT, NL, PL, RS, SE, SI, SK	I2, FB	Rosaceous bushes, mainly firethorn ( <i>Pyracantha</i> )	Baraniak and Walczak (2000), Buhl et al. (1994), Csoka (2001), De Prins (1994), Glavendekić et al. (2005), Huemer and Rabitsch (2002), Maček (1976), Šefrová (1998), Šefrová (1999), Stigter and Frankenhuysen (1991)
<i>Phyllonorycter platani</i> (Staudinger, 1870)	C	Phytophagous	Cryptogenic	1870, IT	AL, AT, BE, BG, CH, CZ, DE, DK, ES, FR, FR-COR, GB, GR, HR, HU, IL, IT, IT-SAR, IT-SIC, MK, NL, PL, PT, PT-MAD, SE, SI, SK, GB	I2, X11, FA, G5	<i>Platanus</i>	Aguiar and Karsholt (2006), Baeta-Neves (1945), Frankenhuysen (1983), Huemer and Rabitsch (2002), Janmouille (1954), Maček (1968), Roll et al. (2007), Šefrová (2001), Skala (1936), Skala (1937)
<i>Phyllonorycter robinella</i> (Clemens, 1859)	A	Phytophagous	North America	1983, CH	AL, AT, BE, BG, CH, CZ, DE, DK, ES, FR, HR, HU, IT, LT, NL, PL, RO, RS, SI, SK, GB	I2, X11, FA, G1, G5	<i>Robinia</i>	Bolchi Serini and Trematerra (1989), Buhl et al. (2005), Buszko and Nowacki (2000), De Prins and Groenen (2001), Glavendekić et al. (2005), Huemer and Rabitsch (2002), Huisman et al. (2003), Ivinskis and Rimsaite (2008), Olivella (2001), Šefrová (2002b), Seljak (1995), Tomov (2003), Whitebread (1990)

Family Species	Status	Regime	Native range	1 <sup>st</sup> record in Europe and country	Invaded countries	Alien Habitat	Hosts	References
<b>Lycaenidae</b>								
<i>Cacyreus marsballi</i> Butler, 1898	A	Phytophagous	Africa	1987, ES-BAL	BE, CH, DE, ES, ES-BAL, FR, FR-COR, GB, IT, IT-SAR, IT-SIC, MT, PT	I2, J1	<i>Pelargonium</i>	Aistleitner (2003), Fuentes Garcia (1997), Sammut (2007), Sarto i Monteys (1992), Trematerra et al. (1997), Troukens (1991), Zilli (1997)
<b>Noctuidae</b>								
<i>Aconitia (Emmelia) candefacta</i> (Hübner, 1831) (according to Fauna Europaea)	A	Phytophagous	North America	1967, RU,	RU, GB	I1, J6	Ragweed ( <i>Ambrosia</i> spp.)	Poltavsky and Artokhin (2006), Rezbanyai-Reser et al. (2005), Shchurov (2004)
<i>Anaopteron ephaea</i> (Hampson, 1914)	A	Phytophagous	Africa	1987, GR/ES	FR, FR-COR, GR, ES, BAL		Unknown, a New Guinea species of <i>Ecphtaea</i> feeds on legume pods	Rezbanyai-Reser et al. (2004), Robinson et al. (2010), Tautel (2008)
<i>Callopietria maillardii</i> (Guenée, 1862)	C	Phytophagous	Cryptogenic (Oriental, Australasia, Pacific and Africa)	1983, DE, DK	DE, DK	I1, I2	Ferns ( <i>Adiantum, Lygodium, Nephrolepis, Pleaeca</i> )	Bathon (1984), Buhl et al. (1985), Karsholt (1994)
<i>Chrysodeixis acuta</i> (Walker, 1858)	C	Phytophagous	Cryptogenic (Tropical/Subtropical)	1998, AT	AT, ES, ES-CAN, FR, GB, IE, PT-MAD	I1, I2	Polyphagous: Tomato, cotton, soybean, banana, tobacco, <i>Citrus</i>	Aguar and Karsholt (2006), Huemer and Rabitsch (2002)
<i>Chrysodeixis eriosoma</i> (Doubleday, 1843)	A	Phytophagous	Australasia	2002, DE	DE	I1, I2	Highly polyphagous, foliage and fruit of many field and vegetable crops, ornamentals and weeds: chickpeas, lucerne, maize, potato, sunflower, etc.	Geiter et al. (2001)

Family Species	Status	Regime	Native range	1 <sup>st</sup> record in Europe and country	Invaded countries	Alien Habitat	Hosts	References
<i>Spodoptera litura</i> (Fabricius, 1775)	A	Phytophagous	Asia-Tropical	1978, GB	AL, DE, GB	F5, F6, F8, I1, I2, J100	Highly polyphagous, crops and ornamentals	Seymour and Kilby (1978)
<b>Nolidae</b>								
<i>Earias vittella</i> (Fabricius, 1794)	A	Phytophagous	Asia	2003, ES	ES	I1, J6	Okra ( <i>Abelmoschus esculentus</i> ) pods, <i>Gossypium</i> and <i>Hibiscus</i>	Nash (2003)
<b>Nymphalidae</b>								
<i>Danatus chrysipus</i> (Linnaeus, 1758)	A	Phytophagous	Africa	1982, ES	ES, ES-CAN, GR, HR, IT-SIC	I1, I2, G, H	<i>Asclepias</i> , <i>Cynanchum acutum</i> , <i>Gomphocarpus fruticosus</i> , <i>Gossypium arboreum</i> , <i>Caralluma burchardii</i>	Baez (1998), Gómez de Aizpúria (2004), Tapia-Domínguez (1982)
<i>Danatus plexippus</i> (Linnaeus, 1758)	A	Phytophagous	North America	1887, ES-CAN	ES, ES-CAN, PT, PT-AZO, PT-MAD	I1, I2, G, H	<i>Asclepias</i> , <i>Gomphocarpus fruticosus</i> , <i>Gossypium arboretum</i>	Baez (1998), Gómez de Aizpúria (2004), Neves et al. (2001), Tapia-Domínguez (1982)
<b>Oecophoridae</b>								
<i>Borkhausenia nefrax</i> Hodges, 1974	A	Detritivorous	North America	1961, PL	ES, FR, NL, PL	J1	Decaying plant material	Buszko and Vives Moreno (1992), Kuchlein and van Lettow (1999)
<i>Eratophyes amasiella</i> (Herrich-Schäffer, 1854)	A	Detritivorous	Asia (Turkey)	1972, NL	BE, DE, DK, NL, SE	J1	Decaying wood	Buhl et al. (1991), Buhl et al. (2004), De Prins (2007), Svensson (2007)
<i>Neomariania rebeli</i> (Walsingham, 1894)	A	Phytophagous	Africa, Macaronesia (PT-MAD and ES-CAN)	1986, PT	PT	B	Unknown	Riedl (1990)
<i>Tachystola acrosantha</i> (Meyrick, 1885)	A	Detritivorous	Australasia	1908, GB	GB	I2	Withered leaves, leaf-litter	Hind (2000)

Family Species	Status	Regime	Native range	1 <sup>st</sup> record in Europe and country	Invaded countries	Alien Habitat	Hosts	References
<b>Pterophoridae</b>								
<i>Lantanophaga pusillidactylus</i> (Walker, 1864)	C	Phytophagous	Cryptogenic (tropical, type locality, Jamaica)	1973, PT-MAD	ES, IT, PT-AZO, PT-MAD	I2	<i>Lantana camara</i>	Aguiar and Karsholt (2006), Bella and Marchese (2007), Kimber (2008)
<i>Megalorhipida leucodactylus</i> (Fabricius, 1794)	C	Phytophagous	Cryptogenic (tropical, type locality Virgin Islands)	1967, IT-SIC	IL, IT-SIC	F5, F8, I2	<i>Acacia neovernicosa</i> , <i>Mimosa tenuiflora</i> (Fabaceae), <i>Boerhavia diffusa</i> , <i>B. coccinea</i> , <i>B. chinensis</i> , <i>B. repens</i> , <i>Commicarpus tuberosus</i> , <i>Okenia hypogaea</i> (Nyctaginaceae), <i>Amaranthus</i> (Amaranthaceae), <i>Scavola frutescens</i> (Goodeniaceae), <i>Tessaria absinthioides</i> (Asteraceae).	Bella and Ferraro (2005), Gridis (1996)
<b>Pyralidae + Crambidae</b>								
<i>Agassiziella angulipennis</i> (Hampson, 1891)	A	Phytophagous	Asia	1977, GB	GB, NL	J1, J100	Aquatic water plants	Goater (1986), Goater et al. (2005)
<i>Arenipses sabella</i> Hampson, 1901	A	Phytophagous	Africa (North Africa, Middle east)	1999, ES	ES, FR	I2	Palm trees ( <i>Phoenix</i> spp)	Asselbergs (1999), Streito and Martinez (2005)



Family Species	Status	Regime	Native range	1 <sup>st</sup> record in Europe and country	Invaded countries	Alien Habitat	Hosts	References
<i>Cadva cautella</i> (Walker, 1863)	C	Phytophagous	Cryptogenic (type locality: India)	1900, ?	AL, AT, BE, BG, CH, CY, CZ, DK, ES, FI, FR, FR-COR, DE, GB, GR, GR-CRE, HU, IE, IT, IT-SAR, IT-SIC, LV, LT, MT, NL, NO, PL, PT-AZO, PT-MAD, RO, RU, SE, SK	J1	Stored Products: dried fruits, nuts, grain	Aguiar and Karsholt (2006), von Andres (1916), Filipjev (1932), Huemer and Rabitsch (2002), Jannouille (1965), Karsholt and Vieira (2005), Kenis (2005), Mehl (1977), Ostrauskas and Taluntyte (2004), Reiprich (1990), Šefrová and Laštůvka (2005), Paoli (1922)
<i>Cadva figulilella</i> (Gregson, 1871)	C	Detritivorous	Cryptogenic (type locality: Liverpool, England)	1871, GB	AL, AT, BA, BE, BG, BY, CH, CY, CZ, DE, ES, FR, FR-COR, GB, GR, GR-CRE, HR, HU, IE, IT, IT-SAR, IT-SIC, LT, LU, MK, MT, NO, PL, PT, PT-MAD, RO, RS, RU, SE, SI, SK, GB	J1	Dried fruits, raisins, figs	Carnelutti (1975), De Crombrughe (1909), Goater (1986), Huemer and Rabitsch (2002), Kenis (2005), Reiprich and Okáli (1989), Roesler (1973), Šefrová and Laštůvka (2005)
<i>Chilo suppressalis</i> (Walker, 1863)	A	Phytophagous	Asia	1949, ES	ES, FR, FR-COR, RU	I1	Rice (leaves, stems)	Feron (1973), Gerasimov (1949)
<i>Coryna cephalonica</i> (Stainton, 1866)	C	Detritivorous	Cryptogenic (Tropical, subtropical, (type locality, Great Britain)	1866, GB	AT, BE, BG, CH, CZ, DE, DK, ES, FR, GB, GR, IT, IT-SIC, LV, PL, PT, PT-AZO, RO, SE, GB	J1	Stored grain (Poaceae: e.g. rice)	Drensky (1930), Goater (1986), Huemer and Rabitsch (2002), Jannouille (1938), Karsholt and Vieira (2005), Palm (1986), Šefrová and Laštůvka (2005), Silvestri (1943)

Family Species	Status	Regime	Native range	1 <sup>st</sup> record in Europe and country	Invaded countries	Alien Habitat	Hosts	References
<i>Diaphania perspectalis</i> (Walker, 1859)	A	Phytophagous	Asia	2007, DE	CH, DE, FR, NL	I2	<i>Buxus</i>	Brua (2008), Rennwald (2008)
<i>Diplostephis periersalis</i> (Walker, 1859)	A	Phytophagous	Asia	2000, PT	BE, DK, ES, ES-BAL, MT, NL, PT	E3	<i>Carex</i>	Buhl (in press), Muus and Wullaert (2008), Speidel et al. (2007)
<i>Elophila diffuualis</i> (Snellen, 1880)	A	Phytophagous	Asia	1978, DK	CZ, DK, FI, GB, NL	J1, J100	Aquatic plants	Buhl et al. (1982), Goater et al. (2005)
<i>Elophila manilensis</i> Hampson, 1917	A	Phytophagous	Asia-Tropical	1978, DK/GB	CZ, DK, GB	J1, J100	Aquatic plants	Buhl et al. (1982), Vrabec and Heřman (2006)
<i>Elophila melagynalis</i> (Agassiz, 1978)	A	Phytophagous	Asia-Tropical	1978, GB	GB	J100, J1	Aquatic plants	Agassiz (1978b)
<i>Elophila obliveralis</i> (Walker, 1859)	A	Phytophagous	North America	1968, GB	GB	J100	Waterlily	Goater (1986)
<i>Ephestia elutella</i> (Hübner, 1796)	C	Detritivorous	Cryptogenic (type locality, Germany)	1796, DE	AL, AT, BE, BG, CH, CY, CZ, DE, DK, EE, ES, FI, FR GB, GR, GR-CRE, HU, IE, IS, IT, IT-SAR, IT-SIC, LT, LV, MK, MT, NL, NO, PL, PT, PT-AZO, PT-MAD, RO, RU, SE, SI, SK	J1	Stored nuts, dried fruits, grain, etc.	Abafi-Aigner et al. (1896), Aguiar and Karsholt (2006), Caruana Gatto (1905), De Selys-Longchamps (1844), Filipjev (1932), Huemer and Rabitsch (2002), Karsholt and Vieira (2005), Kenis (2005), Mehl (1977), Petersen (1924), Reid (2008), Šefrová and Laštůvka (2005), Speiser (1903), Paoli (1922)

Family Species	Status	Regime	Native range	1 <sup>st</sup> record in Europe and country	Invaded countries	Alien Habitat	Hosts	References
<i>Ephesia kuehniella</i> Zeller, 1879	C	Detritivorous	Cryptogenic (no type locality)	1879, ?	AL, AT, BA, BE, BG, CH, CY, CZ, DE, DK, EE, ES, FI, FR, GB, GR, GR-CRE, HU, IE, IS, IT, IT-SAR, IT-SIC, LT, LV, ME, MT, NO, PL, PT, PT-AZO, PT-MAD, RO, RS, RU, SE, SI, SK	J1	Stored nuts, dried fruits, grain, etc.	Aguiar and Karsholt (2006), Bolle (1921), Borg (1932), De Crombrughe (1906), Glavendekić et al. (2005), Goater (1986), Hrubý (1964), Huemer and Rabitsch (2002), Janežič (1951), Karsholt and Vieira (2005), Kenis (2005), Mehl (1977), Palm (1986), Šefrová and Laštůvka (2005), Zverezomb-Zubowsky (1918)
<i>Eustixia pupula</i> Hübner, 1823	A	Phytophagous	North America	1997, GB	GB	I1	Cabbage, <i>Lepidium virginicum</i> (Cruciferae)	Budd and Goater (1998)
<i>Herpetogramma licarsisalis</i> (Walker, 1859)	C	Phytophagous	Cryptogenic (type locality: Malaysia: Sarawak, Old world tropics: Asia and Africa)	1994, CY	CY, ES, MT, PT, PT-MAD, SE	I2, E1	Monocots, turf grasses, pastures	Aguiar and Karsholt (2006), Karsholt and Vieira (2005), Sammut (2000)
<i>Leucinodes orbonalis</i> (Guenée, 1854)	A	Phytophagous	Africa	2004, BE	BE	I1	<i>Solanum melongena</i> (eggplant)	Nyst (2004)
<i>Paralipsa gularis</i> (Zeller, 1877)	A	Detritivorous	SE Asia (type locality: Japan)	1921	AT, BE, CH, CZ, DE, DK, FR, GB, HU, IT, IT-SIC, LV, NL, NO, SE	J1	Dry fruits, occasionally in imports of nuts for chocolate industry.	De Prins (1983), Giunchi (1957), Goater (1986), Huemer and Rabitsch (2002), Mariani (1941–1943), Mehl (1977), Palm (1986), Šefrová and Laštůvka (2005),

Family Species	Status	Regime	Native range	1 <sup>st</sup> record in Europe and country	Invaded countries	Alien Habitat	Hosts	References
<i>Parapolylois transistella</i> (Walker, 1863)	A	Phytophagous	North America	1870, AT	AT, IT	I2	<i>Juglans</i>	Huemer and Rabitsch (2002), Trematerra (1988)
<i>Parapomyx bilinealis</i> Snellen, 1876	A	Phytophagous	Asia-Tropical	1978, DK	DK, GB, SE	J100	Aquatic plants	Hancock (1984), Karsholt and Nielsen (1998)
<i>Parapomyx crisonalis</i> (Walker, 1859)	A	Phytophagous	Asia-Tropical	1979, GB	GB	J100	Aquatic plants	Goater (1986)
<i>Parapomyx diminutalis</i> Snellen, 1880	C	Phytophagous	Cryptogenic (Old world tropics: Asia and Africa)	1977, GB	AT, CZ, DK, FI, GB	J100	<i>Nymphaea</i>	Buhl et al. (1982), Goater (1986), Goater et al. (2005), Huemer and Rabitsch (2002)
<i>Parapomyx fluctuosalis</i> (Zeller, 1852)	C	Phytophagous	Cryptogenic (ES, Asia and Africa, type locality, Natal)	1979, GB	GB	J100	Aquatic plants	Goater (1986)
<i>Parapomyx obscuralis</i> Grote 1881	A	Phytophagous	North America	1967, GB	GB	J100	Aquatic plants	Goater (1986)
<i>Parapomyx polydectalis</i> Walker, 1859	A	Phytophagous	Australasia	1979, GB	GB, NL	J100	Aquatic plants	Goater et al. (2005)
<i>Phycita diaphana</i> (Staudinger, 1870)	C	Detritivorous	Cryptogenic (type locality: Spain, Malaga)	1870, ES, (2002, PT)	ES, GR, PT	I2, J6	<i>Ricinus communis</i>	Cortley et al. (2000)

Family Species	Status	Regime	Native range	1 <sup>st</sup> record in Europe and country	Invaded countries	Alien Habitat	Hosts	References
<i>Plodia interpunctella</i> (Hübner, 1813)	C	Detritivorous	Cryptogenic (no type locality)	1813, DE?	AL, AT, BE, BG, BY, CH, CZ, DE, DK, EE, ES, FI, FR, GB, GR, GR-CRE, HU, IE, IS, IT, LV, LT, ME, MK, MT, NL, NO, PL, PT, PT-AZO, PT-MAD, RO, RU, SE, SI, SK, GB	J1	Stored plant products	Aguiar and Karsholt (2006), Borg (1932), Goater (1986), Hrubý (1964), Huemer and Rabitsch (2002), Ivinskis (1976), Karsholt and Vieira (2005), Kenis (2005), Martin (1991), Mehl (1977), Palm (1986), Rebel (1901), Šefrova and Laštůvka (2005), Zolnir (1977)
<i>Pseudarenipes insularum</i> Speidel & Schmitz, 1991	C	Phytophagous	Cryptogenic (type locality: Tenerife, Santa Cruz)	2002, FR, 2003, MT	ES, ES-CAN, FR, MT	I2	<i>Phoenix canariensis</i>	Reynaud et al. (2002), Sammut (2003), Sammut (2005)
<i>Spoladea recurvalis</i> (Fabricius, 1775)	A	Phytophagous	Tropics: Asia (type locality: India Orientali) South America and Africa	1968, NL (from Canaries)	BE, DK, IT, NL, PT-AZO, PT-MAD	I1, I2	<i>Beta vulgaris</i> , <i>Trianthema postulacastrum</i> , <i>Celosia</i> sp., <i>Chenopodium</i> sp., <i>Portulaca</i> sp., <i>Amaranthus</i> sp.	De Prins (2005), Karsholt and Vieira (2005), Nuss (2010)
<i>Vitula edmandsii</i> (Packard, 1865) ssp. <i>sernatilineella</i> Ragonot, 1887	A	Detritivorous	North America	late 1940's, DE	DE, DK, FI, NO, SE	J	Honey, pollen, broods in bee nests	Kullberg and Mikkola (2001), Palm (1986), Svensson (1986), Weidner (1971)
<b>Saturniidae</b>								
<i>Antheraea pernyi</i> (Guérin-Ménéville, 1855)	A	Phytophagous	Asia	1900, ES	ES, ES-BAL, HU	G1, G5, I2	<i>Quercus</i> , <i>Fagus</i> , <i>Betula</i> , <i>Aesculus</i>	Pittaway (2008)



Family Species	Status	Regime	Native range	1 <sup>st</sup> record in Europe and country	Invaded countries	Alien Habitat	Hosts	References
<i>Antheraea yamamai</i> (Guérin-Méneville, 1861)	A	Phyto- phagous	Asia	1866-1868, SI	AT, BA, DE, HR, HU, IT, MK, RO, RS, SI	G1, G5, I2	<i>Quercus, Aesculus, Fagus,</i> <i>Castanea</i> , etc.	Blazič et al. (1995), Casale (1973), Glavendekić et al. (2005), Huemer and Rabitsch (2002), Pittaway (2008)
<i>Samia cynthia</i> (Drury, 1773)	A	Phyto- phagous	Asia	1854, IT	AL, AT, CH, DE, ES, FR, HR, IT, SI	I2, X24	<i>Ailanthus</i> and other deciduous trees	Huemer and Rabitsch (2002), Kenis (2005), Kollar(1854), Koster and Sinev (2003), Lepidopteren Arbeitsgruppe (2000), Quajjat (1904)
<b>Tineidae</b>								
<i>Opogona omoscopa</i> (Meyrick, 1893)	A	Phyto- phagous	Africa	1923, PT- MAD	DK, PT, PT-AZO, PT-MAD, SE	I1, I2, J1	Stored products (grain, fruits), plants with mosses	Buhl et al. (1997), Corley (2005), Gaedike and Karsholt (2001), Karsholt and Vieira (2005)
<i>Opogona sacchari</i> (Bojer, 1856)	A	Phyto- phagous	C. Africa	1910, PT- MAD	AL, BE, BG, CH, CZ, DK, ES, ES- CAN, GB, GR, HU, IT, NL, PL, PT-AZO, PT-MAD	I2, J1, J100	<i>Dracaena, Srelitzia,</i> <i>Yucca, Alpina,</i> <i>Begonia, Bougainvillea,</i> <i>Bromeliaceae, Palms</i> ( <i>Chamaedorea</i> etc.), <i>Condyline, Cycas,</i> <i>Hibiscus, Dieffenbachia,</i> <i>Poinsettia, Ficus,</i> <i>Gloxinia, Heliconia,</i> <i>Ipeastrum, Maranta,</i> <i>Philodendron,</i> <i>Sansevieria Saintpaulia,</i> banana plantations ( <i>Musa acuminata</i> )	Aguar and Karsholt (2006), Ciampolini (1973), Gaedike and Karsholt (2001), Jannone (1966), Karsholt and Vieira (2005), Sitek (2003), Walsingham (1910), Wolff (1953)

Family Species	Status	Regime	Native range	1 <sup>st</sup> record in Europe and country	Invaded countries	Alien Habitat	Hosts	References
<i>Præceces atomosella</i> (Walker, 1863)	C	Detritivorous	Cryptogenic (type locality: Sierra Leone)	before 1979, PT-MAD	CY, MT, PT-AZO, PT-MAD	F5, F6, F7, I1, I2	<i>Peridium</i>	Aguiar and Karsholt (2006), Gaedike and Karsholt (2001), Karsholt and Vieira (2005)
<i>Psychoides filicivora</i> (Meyrick, 1937)	A	Phytophagous	Asia (type locality: Ireland)	1909, IE	GB, IE	E5, F3, J100	Ferns ( <i>Polystichum setiferum</i> , <i>Dryopteris filix-mas</i> , <i>Phyllitis scolopendrium</i> ), often found indoors.	Beirne (1940), Gaedike and Karsholt (2001), Kimber (2008)
<i>Tinea pallescens</i> Stainton, 1851	A	Detritivorous	Neotropics (South America)	1840, IE	AT, BE, CZ, DE, DK, FI, FR, GB, HU, IE, IT, LV, NL, NO, RO, RU, SE, SK	J1, J2, J6	Furs, dry fish	Heath and Emmet (1985), Karsholt and Nielsen (1998), Mehl (1977), Šefrová and Laštůvka (2005), Tokár et al. (1999), Vives Moreno (2003)
<i>Tinea translucens</i> Meyrick, 1917	A	Detritivorous	S Asia (type locality: Pakistan)	1856, UK	AL, AT, CY, CZ, DE, DK, ES, FR, GB, GR, GR-CRE, HR, HU, IS, IT, IT-SAR, IT-SIC, LV, LT, NO, PT, RO, RU, RS, SK, GB	J1	Stored products, clothes	Buhl et al. (1987), Ivinskis (1993), Opheim and Fjeldså (1983), Pelham-Clinton (1985), Reiprich (1992), Šefrová and Laštůvka (2005), Tokár et al. (2002)
<i>Tineola bisselliella</i> (Hummel, 1823)	C	Detritivorous	Cryptogenic (type locality: Europe)	1794, SE	AT, BE, BG, BY, CH, CZ, DK, EE, ES, FI, FR, FR-COR, DE, GB, HU, IS, IE, IT, LT, LV, NL, NO, PL, PT, RO, RU, SE, SI, SK, GB	J1, J2	Stored products, clothes	Drenowsky (1909), Hrubý (1964), Karsholt and Nielsen (1998), Mehl (1977), Mendes (1904), Mendes (1905), Pallonius (1932), Peterson and Nilssen (2004), Šefrová and Laštůvka (2005)

Family Species	Status	Regime	Native range	1 <sup>st</sup> record in Europe and country	Invaded countries	Alien Habitat	Hosts	References
<b>Tortricidae</b>								
<i>Acleris undulana</i> (Walsingham, 1900)	A	Phytophagous	Asia	1998, ES?	ES, FR	EA, G3, I2, X11	<i>Cedrus</i>	Vives Moreno (2003)
<i>Clepsis peritana</i> (Clemens, 1860)	A	Phytophagous	North America	1979, DE	DE, DK, GB, PT, MAD	I1, I2, J100	<i>Citrus</i> , <i>Euphorbia pulcherrima</i> , and low strabberries, and low herbaceous plants	Buhl et al. (1997), Hill et al. (2005)
<i>Cryptophlebia leucoreta</i> (Meyrick, 1927)	A	Phytophagous	Africa	1965, FI	IL, FI	I1, J100	<i>Citrus</i> , <i>Macadamia terniflora</i> , <i>Ricinus communis</i> , cotton	Bradley (1959), Hamburger et al. (2000), Karvonen (1983)
<i>Dichelita cedricola</i> (Diakonoff, 1974)	A	Phytophagous	Asia	POST-2001, FR	FR	G3, I2	<i>Cedrus</i>	Fabre et al. (2001)
<i>Epichoristodes acerbella</i> (Walker, 1864)	A	Phytophagous	Africa	1960, DK	DK, ES, FR, GB, IT, IT-SAR, IT-SIC, NO, RS	I2	Polyphagous, especially <i>Dianthus</i>	Costa Seglar and Vives Quadras (1976), Fjeldalen (1965), Glavendekić et al. (2005), Thygesen et al. (1965), Zangheri and Cavallo (1971)
<i>Epinotia algeriensis</i> Chambon, 1990	A	Phytophagous	Africa	POST-1990, FR	FR	G3	<i>Cedrus</i>	Chambon et al. (1990)
<i>Epinotia cedricida</i> Diakonoff, 1969	A	Phytophagous	Africa	1968, FR	AT, BG, FR	G3, I2	<i>Cedrus</i>	Du Merle (1988), Huemer and Rabitsch (2002), Leciant (1969), Vives Moreno (2003)
<i>Epiphyas postvittana</i> (Walker, 1863)	A	Phytophagous	Australasia	1911, GB	GB, PT-AZO	I1, I2	Polyphagous ( <i>Malus</i> , etc.)	Agassiz (1996a), Karsholt and Vieira (2005)

Family Species	Status	Regime	Native range	1 <sup>st</sup> record in Europe and country	Invaded countries	Alien Habitat	Hosts	References
<i>Grapholita molesta</i> (Busck, 1916)	A	Phytophagous	Asia	1920, SI	AL, AT, BA, BG, CH, CZ, DE, DK, ES, FR, GR, HU, IT, IT-SAR, IT-SIC, LT, ME, MK, PT-AZO, RO, RS, RU, SI, SK, GB	I2	Rosaceae ( <i>Prunus</i> , <i>Pyrus</i> , <i>Malus</i> )	Domínguez García-Tejero (1943), Dufrane (1960), Glavendekić et al. (2005), Hrdý and Krampl (1977), Huemer and Rabitsch (2002), Ivinskis (1993), Janežič (1951), Karsholt and Vieira (2005), Katsogiannis and Koveos (2001), Kyparissoudas (1989), Paoli (1922), Strygina and Shutova (1966), Tzalev (1979)
<i>Lozotaenia cedrivora</i> Chambon, 1990	A	Phytophagous	Africa	1968, FR	FR	G3, I2	<i>Cedrus</i>	Fabre (1997)
<b>Yponomeutidae</b>								
<i>Argyresthia cupressella</i> Walsingham, 1890	A	Phytophagous	North America	1997, GB	GB	I2	Cupressaceae ( <i>Chamaecyparis</i> , <i>Cupressocyparis</i> , <i>Juniperus</i> )	Agassiz (1999)
<i>Argyresthia thuella</i> (Packard, 1871)	A	Phytophagous	North America	1971, NL	AT, BE, BG, CH, CZ, DE, HU, NL, PL, SI, SK	I2, FA	<i>Thuja</i> , occasionally other Cupressaceae	De Prins (1983), Frankenhuysen (1974), Huemer and Rabitsch (2002), Šefrová and Laštůvka (2005), Škerlavaj and Munda (1999), Tokár et al. (1999)
<i>Prays citri</i> (Millière, 1873)	A	Phytophagous	Asia	1877, IT	AL, DK, ES, FR, FR-COR, GR, GR-CRE, IL, IT, IT-SAR, IT-SIC, NL, PT, PT-AZO, PT-MAD	I2, J100	<i>Citrus</i>	Buhl et al. (2001), de Carvalho (1995), Franco et al. (2006), Karsholt and Vieira (2005), Liotta and Mineo (1963), Röll et al. (2007)
<i>Prays peregrina</i> Agassiz, 2007	C	Phytophagous	Cryptogenic	2003, GB	GB	I2	Unknown	Agassiz (2007)

**Table 11.2.** List and characteristics of the lepidopteran species expanding within Europe (alien *in* Europe). Country codes abbreviations refer to ISO 3166 (see appendix I). Habitat abbreviations refer to EUNIS (see appendix II). Last update 01/06/2009.

Family Species	Regime	Native range	Invaded countries	Alien Habitat	Hosts	Refs
<b>Arctiidae</b>						
<i>Eilema caniola</i> (Hübner, 1808)	Phyto-phagous	Europe, W Asia & N Africa	AT, BE, CH	B3	Algae and lichens	Foligne (1859), Huemer and Rabitsch (2002), Kenis (2005)
<b>Autostichidae</b>						
<i>Ogoconia novimundi</i> Busck, 1915	Detritivorous	?, described from North America	AT, GR, HR, PT-AZO, SK, RU	G, F4-9, FA, G, J6	Decaying plant material	Gozmány (2008), Huemer and Rabitsch (2002), Karsholt and Vieira (2005), Tokár et al. (2002)
<b>Coleophoridae</b>						
<i>Coleophora concipennella</i> (Hübner, 1796)	Phyto-phagous	W Europe	PT-MAD	I1, I2, X24	<i>Malus</i>	Aguiar and Karsholt (2006)
<i>Coleophora laricella</i> (Hübner, 1817)	Phyto-phagous	European Alps	BE, DK, HR, EE, FI, GB, HR, IE, LT, LV, MK, NL, NO, RS, SE	G3	<i>Larix</i>	Bond et al. (2006), De Fré (1858)
<i>Coleophora spinacella</i> Rebel, 1916	Phyto-phagous	C Europe (incl. CZ, AU)	DE, HU, IT, LT, SE, SK	G, I2	<i>Spineae</i>	Baldizzone (pers. comm.), Huemer and Rabitsch (2002), Reiprich and Janovský (1981)
<i>Coleophora versurella</i> Zeller, 1849	Phyto-phagous	Europe	PT-AZO	E1	<i>Atriplex, Chenopodium</i>	Karsholt and Vieira (2005)
<b>Epermeniidae</b>						
<i>Epermenia aequidentellus</i> (Hoffmann, 1867)	Phyto-phagous	C & S Europe	PT-AZO	U	<i>Daucus carota</i>	Karsholt and Vieira (2005)
<b>Ethmiidae</b>						
<i>Ethmia terminella</i> Fletcher, 1938	Phyto-phagous	Europe to N Africa and Asia Minor	SE	B2	<i>Echium vulgare</i>	Svensson (1992)



Family Species	Regime	Native range	Invaded countries	Alien Habitat	Hosts	Refs
<b>Gelechiidae</b>						
<i>Athrips rancidella</i> (Herrich-Schäffer, 1854)	Phyto- phagous	Europe	GB	I2	<i>Cotoneaster horizontalis</i>	Chalmers-Hunt (1985)
<i>Chrysoesthia sexgutella</i> (Thunberg, 1794)	Phyto- phagous	Europe and/or N Africa	PT-AZO	D6	<i>Chenopodium</i>	Karsholt and Vieira (2005)
<i>Gelechia senticetella</i> (Staudinger, 1859)	Phyto- phagous	European Alps	BE, DK, GB, NL, BU	I2, G	<i>Juniperus, Cupressus</i>	De Prins (1989), van Nieuikerken et al. (1993), Buhl et al. (2007)
<i>Platyedra subcinerea</i> (Haworth, 1828)	Phyto- phagous	Europe	PT-AZO	I2	<i>Malva sylvestris</i> , seeds, flowers	Karsholt and Vieira (2005)
<b>Geometridae</b>						
<i>Bupalus piniaria</i> (Linnaeus, 1758)	Phyto- phagous	Europe	IE	G3	<i>Pinus</i>	Moffat (1897)
<i>Erannis defoliaria</i> (Clerck, 1759)	Phyto- phagous	Europe	IS	G1, I2	Polyphagous ( <i>Quercus, Betula, Ulmus, Acer, Tilia</i> )	Wolff (1971)
<i>Eupithecia carpophagata</i> Staudinger, 1871	Phyto- phagous	Mediterranean	DE	E4	<i>Silene (S. saxifraga, S. rupestris)</i>	Geiter et al. (2001)
<i>Eupithecia indigata</i> (Hübner, 1813)	Phyto- phagous	Europe from Urals W and S to Alps	IE	G3	<i>Pinus sylvestris, Picea, Larix</i>	Skou (1986)
<i>Eupithecia phoeniceata</i> (Rambur, 1834)	Phyto- phagous	Atlantic Europe	BE, GB	I2	<i>Juniperus phoenicea</i>	De Prins (2007)
<i>Eurrantia plummistaria</i> (De Villers, 1789)	Phyto- phagous	Mediterranean	DE	F6	<i>Dorycnium</i>	Geiter et al. (2001)
<i>Idaea inquinata</i> (Scopoli, 1763)	Phyto- phagous	S Europe to Asia Minor, N Africa	DK, FI, LV, NL, SE	G1, G5, J1	Ever-lasting flowers/dry and withered petals	Naves (1995), Skou (1986), Wolff (1969)
<i>Macaria liturata</i> (Clerck, 1759)	Phyto- phagous	Europe to E Asia	IE	G3	<i>Pinus sylvestris</i>	Roques et al. (2006)

Family Species	Regime	Native range	Invaded countries	Alien Habitat	Hosts	Refs
<i>Operophtera brunnata</i> (Linnaeus, 1758)	Phyto- phagous	Europe to Caucasus	IS	G	Deciduous trees	Peterson and Nilssen (2004)
<i>Peribatodes perversaria</i> (Boisduval, 1840)	Phyto- phagous	Europe	DE	F4	<i>Juniperus</i>	Savela (2010)
<i>Thana britannica</i> (Turner, 1925)	Phyto- phagous	Europe	SE	G3	<i>Abies, Pinus</i>	Skou (1986), Svensson (1977)
<b>Gracillariidae</b>						
<i>Cameraria obriidella</i> Deschka & Dimić, 1986	Phyto- phagous	Southern Balkans	AT, BA, BE, BG, BY, CH, CZ, DE, DK, ES, FI, FR, FR-COR, GB, HR, HU, IT, LV, LT, NL, PL, RO, RU, RS, SE, SI, SK, UK	I2, X11, FA, G1	<i>Aesculus hippocastanum</i>	Buhl et al. (2003), Butin and Führer (1994), De Prins and Puplesiene (2000), Hill et al. (2005), Huemer and Rabitsch (2002), Karsholt and Kristensen (2003), Labanowski and Soika (1998), Laštůvka et al. (1994), Milevoj and Maček (1997), Šefrová and Laštůvka (2001), Stigter et al. (2000), Vives Moreno (2003)
<i>Caloptilia rufipennella</i> (Hübner, 1796)	Phyto- phagous	Europe	LT, LV, NO, SE	I2, G3	<i>Acer pseudoplatanus</i>	Kimber (2008)
<i>Caloptilia roscipennella</i> (Hübner, 1796)	Phyto- phagous	Europe or SW Asia?	AT, BE, CH, CZ, DE, ES, FR, FR-COR, HU, IT, IT- SIC, MD, PL, RO, RU, UK	I2, G3	<i>Juglans regia</i>	Šefrová and Laštůvka (2005)
<i>Phyllonorycter geniculella</i> (Ragonot, 1874)	Phyto- phagous	Europe	GB, LV, LT, SE	I2, G5	<i>Acer pseudoplatanus</i>	Emmet et al. (1985)
<i>Phyllonorycter joannisi</i> (Le Marchand, 1936)	Phyto- phagous	Europe	GB	I2, G5	<i>Acer platanoides</i>	Emmet et al. (1985)

Family Species	Regime	Native range	Invaded countries	Alien Habitat	Hosts	Refs
<i>Phyllonorycter messaniella</i> (Zeller, 1846)	Phyto-phagous	Europe	PT-AZO	I2, G	<i>Quercus, Fagus, Castanea</i>	Aguiar and Karsholt (2006), Karsholt and Vieira (2005)
<i>Phyllonorycter strigulatella</i> (Zeller, 1846)	Phyto-phagous	Europe	GB	G, J1, H1	<i>Alnus incana</i>	Hill et al. (2005)
<b>Lasiocampidae</b>						
<i>Dendrolimus pini</i> (Linnaeus, 1758)	Phyto-phagous	Most of Europe E to Urals and S to S. Italy and Sicily, NW North Africa and Asia Minor and Caucasus to Caucasus and Near East	GB	G3	<i>Pinus</i> spp.	Kimber (2008), Mikkola and Stråhls (2008)
<b>Lyonetiidae</b>						
<i>Leucoptera malifoliella</i> (O. Costa, 1836)	Phyto-phagous	Mediterranean	PT-MAD	I1, G1, G2	Polyphagous, mostly Rosaceae ( <i>Malus, Pyrus, Sorbus, Crataegus, Prunus</i> ), <i>Betula</i>	Aguiar and Karsholt (2006)
<b>Nepticulidae</b>						
<i>Acalyptis platani</i> (Müller-Rutz, 1934)	Phyto-phagous	E Balkans	CH, ES, HR, FR, FR-COR, IT, PT, SI,	FA, G, I2, X11	<i>Platanus</i>	van Nieukerken et al. (2004)
<i>Ectoedemia heringella</i> (Mariani, 1939)	Phyto-phagous	S. Europe (Adriatic)	GB	I2, G2	<i>Quercus ilex</i> leaf miner	Hill et al. (2005)
<i>Stigmella atricapitella</i> (Haworth, 1828)	Phyto-phagous	Europe	PT-MAD, ES	G1, G4, X10	<i>Quercus</i>	Aguiar and Karsholt (2006)
<i>Stigmella aurella</i> (Fabricius, 1775)	Phyto-phagous	Europe	PT-AZO	I1	<i>Rubus</i>	Karsholt and Vieira (2005)
<i>Stigmella cenifoliella</i> (Zeller, 1848)	Phyto-phagous	Europe	PT-MAD	B1, X24, X25	<i>Rosa</i>	Aguiar and Karsholt (2006)

Family Species	Regime	Native range	Invaded countries	Alien Habitat	Hosts	Refs
<i>Stigmella pyri</i> (Glitz, 1865)	Phyto-phagous	Europe	SE	I1	<i>Pyrus</i>	Johansson et al. (1990)
<i>Stigmella spectiosa</i> (Frey, 1857)	Phyto-phagous	Europe	DK, GB	G, I2	<i>Acer pseudoplatanus</i>	Heath and Emmet (1983)
<i>Stigmella subervivona</i> (Stainton, 1869)	Phyto-phagous	S Europe	GB	G3,G4	<i>Quercus ilex</i>	Heath and Emmet (1983)
<b>Noctuidae</b>						
<i>Caradrina ingrata</i> Staudinger, 1897	Phyto-phagous	E Mediterranean, N & NE Africa	CH	I2, X11		Rezbanyai-Reser (1983)
<i>Chrysodeixis chalcites</i> (Esper, 1789)	Phyto-phagous	Mediterranean &/or tropical Africa	CZ, PL, SE	J100, I1	Vegetables in glasshouses	Šefrová and Laštůvka (2005)
<i>Euplexia lucipara</i> (Linnaeus, 1758)	Phyto-phagous	Europe & W Asia, N Africa	PT-AZO	G	Ferns	Karsholt and Vieira (2005)
<i>Lithophane leautieri</i> (Boisduval, 1829)	Phyto-phagous	Mediterranean expanding to C Europe, N Africa	DK, GB, NL	I2	<i>Chamaecyparis</i> , <i>Cupressocyparis</i>	Bednova and Belov (1999), Bech (2009), Heath and Emmet (1983), (Vanholder (2000), Vuure (1981)
<i>Polyphrysia moneta</i> (Fabricius, 1787)	Phyto-phagous	C & SE Europe to W Asia	BE, DK, DE, GB	I2	<i>Delphinium</i>	Kimber (2008)
<i>Sesamia nonagrioides</i> (Lefebvre, 1827)	Phyto-phagous	S Europe, N, W, and SW Africa	PT-AZO, PT-MAD	I1	Corn, sugar cane	Aguiar and Karsholt (2006), Karsholt and Vieira (2005)
<i>Spodoptera littoralis</i> (Boisduval, 1833)	Phyto-phagous	Subtropical Africa Madagascar and S Europe	AL, CH, DE, DK, ES, ES-CAN, FR, FR-COR, GB, IT, IT-SIC, PT, PT-MAD	F5, F6, F8, I1, I2	Polyphagous (vegetables, flowers, fruit trees, introduced with <i>Chrysanthemum</i> )	Hoffmeyer (1962), Roll et al. (2007), Valletta (1949)
<b>Nolidae</b>						

Family Species	Regime	Native range	Invaded countries	Alien Habitat	Hosts	Refs
<i>Earias vernana</i> (Fabricius, 1787)	Phyto- phagous	C&S Europe & W Asia	SE	G, FA	<i>Populus alba</i>	Hyden et al. (2006)
<b>Notodontidae</b>						
<i>Thaumetopoea pityocampa</i> (Denis & Schiff, 1775)	Phyto- phagous	S Europe & N Africa	IT-SAR	G3	<i>Pinus</i> spp	Mendes (1905)
<b>Nymphalidae</b>						
<i>Pararge aegeria</i> (Linnaeus, 1758)	Phyto- phagous	Europe to E Asia and N Africa	PT-MAD	G2, X10	<i>Brachypodium sylvaticum</i> (Poaceae)	Aguar and Karsholt (2006), Jones and Lace (1992)
<b>Oecophoridae</b>						
<i>Endrosia sarcitrella</i> (Linnaeus, 1758)	Detri- vorous	Mediterranean?	AT, BE, BY, CH, CZ, DE, DK, EE, FI, GB, IE, IS, LT, LV, NL, NO, PL, RO, SE, SK	J1, G	Carpets, corks of wine bottles, dried plant material, dried foodstuffs indoors. Occurs outdoors in dried bracket-fungi on trees	Abafi-Aigner et al. (1896), Hrubý (1964), Martini (1991), Mehl (1977), Šefrová and Laštůvka (2005), Ulmer et al. (1918)
<i>Hofmannophila pseudopretella</i> (Stainton, 1849)	Detri- vorous	Mediterranean?	AT, BE, BY, CH, CZ, DE, DK, EE, FI, GB, IS, IE, LT, LV, NL, NO, PL, PT, RO, SE, SK	J1, I2	Fabrics, including carpets, upholstery, leather and books, but more especially infesting dried foodstuffs	Amsel (1959), Hill et al. (2005), Hrubý (1964), Jürivete et al. (2000), Mehl (1977), Šefrová and Laštůvka (2005)
<b>Pieridae</b>						
<i>Pieris rapae</i> (Linnaeus, 1758)	Phyto- phagous	Palearctic and N America, Australia	PT-MAD	X22, X23, X24, X25	<i>Brassica</i>	Aguar and Karsholt (2006)
<b>Plutellidae</b>						

Family Species	Regime	Native range	Invaded countries	Alien Habitat	Hosts	Refs
<i>Plutella porrectella</i> (Linnaeus, 1758)	Phyto- phagous	Europe and Asia Minor, expanding throughout N America	SE	E5, I2	<i>Hesperis matronalis</i>	Gustafsson (2010)
<b>Pterophoridae</b>						
<i>Emmelina monodactyla</i> (Linnaeus, 1758)	Phyto- phagous	Europe, Africa, Asia, and/or N America, Mexico	PT-AZO	E, F, I2	Bindweeds ( <i>Convolvulus</i> and <i>Calysteigia</i> spp.), occasionally Morning glory ( <i>Ipomoea</i> ), <i>Chenopodium</i> and <i>Atriplex</i>	Karsholt and Vieira (2005)
<i>Stenoptilia millieridactylus</i> (Braund, 1861)	Phyto- phagous	Atlantic Europe	GB, IE	I2	Wild Mossy saxifrage ( <i>Saxifraga hypnoides</i> )	Hill et al. (2005)
<b>Pyralidae + Crambidae</b>						
<i>Aglossa caprealis</i> (Hübner, 1809)	Detri- vorous	Mediterranean	AT, BE, CZ, DE, DK, GB, NL, PL, PT-AZO, PT-MAD	J1	Stored Products	Aguar and Karsholt (2006), Buhl et al. (2007), Karsholt and Vieira (2005), Sefrová and Lastůvka (2005)
<i>Apomyelois ceratoniae</i> (Zeller, 1839)	Detri- vorous	Medi- terranean?	AT, BE, CH, CZ, DE, DK, GB, HU, NL, NO, PL, RO, RU, SE, UK	J1	Stored products: dry fruits, dates, nuts, carob, pistachio	Palm (1986), Sterneck and Zimmermann (1933)
<i>Cadra calidella</i> (Guenée, 1845)	Detri- vorous	Mediterranean	AT, BE, CH, CZ, DE, DK, FI, GB, IE, NL, NO, RO, SE, SK	J1	Dried fruits, nuts, figs	Hance (1991), Huemer and Rabitsch (2002), Mehl (1979), Palm (1986), Reiprich (1989), Vlach (1938)



Family Species	Regime	Native range	Invaded countries	Alien Habitat	Hosts	Refs
<i>Duponchelina fovealis</i> Zeller, 1847	Phyto- phagous	Mediterranean and Canary Islands	BE, CZ, DE, DK, FI, GB, NL, NO, SE	J100, J1	Polyphagous in greenhouses ( <i>Begonia</i> , <i>Gerbera</i> , <i>Cyclamen</i> , <i>Anthurium</i> , <i>Kalanchoe</i> , <i>Poinsettia</i> , <i>Rosa</i> , aquatic plants, maize, pepper and other vegetables), can reproduce outside, but surviving winters	Buhl et al. (2006), Deurs (1958), Huisman and Koster (1995), Marek and Bártoová (1998)
<i>Euclasta varii</i> (Popescu-Gorj & Constantinescu, 1973)	Phyto- phagous	SW Europe (Spain)	MT	F6	Palm trees ( <i>Phoenix canariensis</i> and <i>P. dactylifera</i> )	Sammut (2005)
<i>Scleroconia acutellus</i> (Eversmann, 1842)	Phyto- phagous	S & C Europe to Asia (apparently expanding to Siberia, China and E USA)	GB	B, E	Grass stems used for thatching	Wagner et al. (2003)
<b>Saturniidae</b>						
<i>Graellsia isabellae</i> Graells, 1849	Phyto- phagous	SW Europe (Spain, France)	CH	G3	<i>Pinus sylvestris</i>	Lepidopterologen Arbeitsgruppe (2000)
<b>Sesiidae</b>						
<i>Pennisetia hylaeformis</i> (Laspeyres, 1801)	Phyto- phagous	Europe to W Asia	GB	I1, I2	<i>Ribes</i>	Reiprich (1980)
<i>Synanthedon andrenaeformis</i> (Laspeyres, 1801)	Phyto- phagous	Europe &/or Asia Minor to W Asia	SE	I2	<i>Viburnum lantana</i>	Torstenius and Lindmark (2000)
<i>Synanthedon myopaeformis</i> (Borkhausen, 1789)	Phyto- phagous	SC Europe &/ or Asia Minor and Egypt	PT-MAD	I2	<i>Malus</i>	Aguilar and Karsholt (2006)

Family Species	Regime	Native range	Invaded countries	Alien Habitat	Hosts	Refs
<b>Tineidae</b>						
<i>Haplotinea ditella</i> (Pierce & Mercalfe, 1938)	Detri- vorous	Mediterranean	AT, BE, CZ, DE, DK, FI, GB, IT, NL, NO, PL, RU, SE, SK	J1	Cereals	Heath and Emmet (1985), Ivinskis (1988), Reiprich (1991), Šefrová and Laštůvka (2005)
<i>Haplotinea insectella</i> (Fabricius, 1794)	Detri- vorous	Mediterranean	AT, BE, CH, CZ, DE, DK, FI, GB, IE, LT, NL, NO, PL, RU, SE, SK	J1	Stored products	Heath and Emmet (1985), Hrubý (1964), Ivinskis and Mozūraitis (1995), Mehl (1977), Šefrová and Laštůvka (2005)
<i>Tinea murariella</i> Staudinger, 1859	Detri- vorous	Mediterranean?	CH, ES, FR, GB, HR, IT, IT-SIC, NO, PT, PT-AZO, PT-MAD, RO	J1	Stored products	Adams (1979), Gaedike and Karsholt (2001), Karsholt and Vieira (2005), Opheim and Fjeldså (1983)
<i>Trichophaga tapetzella</i> (Linnaeus, 1758)	Detri- vorous	Mediterranean?	AL, AT, BE, BG, BY, CH, CY, CZ, DE, DK, EE, FI, FR, FR-COR, GB, GR-CRE, HR, IE, IT-SAR, LU, LV, LT, NL, NO, PL, PT-AZO, SE, SI, SK, UK	J1	Stored products	De Graaf (1851), Hrubý (1964), Karsholt and Vieira (2005), Lederer (1863), Palionis (1932), Robinson and Nielsen (1989), Šefrová and Laštůvka (2005)
<b>Tortricidae</b>						
<i>Acleris variegana</i> (Denis & Schiffermüller, 1775)	Phyto- phagous	Europe	PT-AZO	FB	<i>Rosa</i>	Karsholt and Vieira (2005)
<i>Adoxophyes orana</i> (Fischer von Röslerstamm, 1834)	Phyto- phagous	Europe	GB	I1, I2	Polyphagous, fruit trees ( <i>Prunus</i> , <i>Malus</i> , <i>Rosa</i> ) and deciduous ( <i>Alnus</i> , <i>Betula</i> , <i>Populus</i> , <i>Salix</i> )	Bradley et al. (1973)

Family Species	Regime	Native range	Invaded countries	Alien Habitat	Hosts	Refs
<i>Cacoecimorpha pronubana</i> (Hübner, 1799)	Phyto- phagous	S Europe	BE, CH, CZ, DE, DK, GB, HU, IE, LT, LU, NL	FB, I2, X11, G1, J100	Polyphagous, especially on <i>Dianthus</i> but also on <i>Acacia</i> , <i>Acer</i> , <i>Chrysanthemum</i> , <i>Citrus</i> , <i>Coriaria</i> , <i>Coronilla</i> , <i>Euphorbia</i> , <i>Ilex</i> , <i>Jasminum</i> , <i>Laurus</i> , <i>Mahonia</i> , <i>Malus</i> , <i>Olea</i> , <i>Pelargonium</i> , <i>Populus</i> , <i>Prunus</i> , <i>Rhododendron</i> , <i>Rosa</i> , <i>Rubus</i> , <i>Syringa</i>	Billen (1999), de Carvalho (1995), Glavendekić et al. (2005), Ivinskis (2004), Janmouille (1974), Thygesen (1963)
<i>Clavigesta sylvestrana</i> (Curtis, 1850)	Phyto- phagous	Europe	PT-AZO, PT-MAD	G3	<i>Pinus</i>	Aguiar and Karsholt (2006), Karsholt and Vieira (2005)
<i>Cydia gruneriana</i> (Ratzeburg, 1868)	Phyto- phagous	E Europe	BE, DK, SE	I2	<i>Larix</i>	Falck and Karsholt (1993), Groenen and De Prins (2004)
<i>Cydia illatana</i> (Herrich-Schäffer, 1851)	Phyto- phagous	Europe	GB	G3	<i>Larix</i> , <i>Picea</i>	Hill et al. (2005)
<i>Cydia milleniana</i> Adamczewski, 1967	Phyto- phagous	Europe and Asia	BE, DK, GB	G3	<i>Larix</i>	Hill et al. (2005), Buhl et al. (2004)
<i>Cydia pactolana</i> (Zeller, 1840)	Phyto- phagous	Europe	GB	G3	<i>Picea</i>	Hill et al. (2005)
<i>Cydia pomonella</i> (Linnaeus, 1758)	Phyto- phagous	Europe, expanding to E USA	PT-AZO, PT-MAD	I1	<i>Malus</i>	Aguiar and Karsholt (2006), Karsholt and Vieira (2005)
<i>Cydia splendana</i> (Hübner, 1799)	Phyto- phagous	Europe	PT-AZO, PT-MAD	G1	<i>Castanea</i> , <i>Quercus</i> but also <i>Fagus</i> and <i>Juglans</i> , fruit borer	Aguiar and Karsholt (2006), Karsholt and Vieira (2005)
<i>Cydia strobilella</i> (Linnaeus, 1758)	Phyto- phagous	Europe	NL		<i>Picea</i> , cone borer	Coldewey and Vári (1947)
<i>Notocelia rosaccolana</i> (Doubleday, 1850)	Phyto- phagous	Europe	IS	I2	<i>Rosa</i>	

Family Species	Regime	Native range	Invaded countries	Alien Habitat	Hosts	Refs
<i>Rhopobota naevana</i> (Hübner, 1817)	Phyto- phagous	Europe	PT-AZO	I2	Holly ( <i>Ilex aquifolium</i> ) and blueberry ( <i>Vaccinium myrtillus</i> )	Karsholt and Vieira (2005)
<i>Rhyacionia buoliana</i> (Denis & Schiffmüller, 1775)	Phyto- phagous	Europe expanding to N America	PT-MAD	X15,X16	<i>Pinus</i>	Aguiar and Karsholt (2006)
<i>Selania leplastriana</i> (Curtis, 1831)	Phyto- phagous	Mediterranean and/or N Africa, Asia Minor	SE	I1	<i>Brassica</i>	Svensson (2006)
<b>Yponomeutidae</b>						
<i>Argyresthia laevigatella</i> (Heydenreich, 1851)	Phyto- phagous	N or C Europe &/or Japan	DK, FI, GB, HU, IE, LT, LV, NL, NO, SE	G3	<i>Larix</i> shoots	Kimber (2008)
<i>Argyresthia trifasciata</i> Staudinger, 1871	Phyto- phagous	European Alps	AT, BE, CZ, DE, DK, GB, HU, LV, NL, PL, SE, SI, SK	I2, FA	<i>Juniperus</i> (not spiked species), very occasionally <i>Cupressocypariss</i> , <i>Chamaecypariss</i>	Buhl et al. (1998), De Prins (1996), Gomboc (2003), Huemer and Rabitsch (2002), Sefrová and Laštůvka (2005)
<i>Prays oleae</i> (Bernard, 1788)	Phyto- phagous	Mediterranean	PT-AZO	I2, J100	<i>Olea</i> (240) trees	Karsholt and Vieira (2005)
<i>Zelleria oleastrella</i> (Millière, 1864)	Phyto- phagous	Mediterranean	GB, PT-MAD	I2, J100	<i>Olea</i> (240) trees	Aguiar and Karsholt (2006)
<b>Zygaenidae</b>						
<i>Therisimima ampellophaga</i> (Bayle- Barelle, 1808)	Phyto- phagous	Mediterranean	AT	I1	<i>Vitis vinifera</i>	Huemer and Rabitsch (2002), Prinz (1907), Tarmann (1998)