



HAL
open science

Multiscale socio-ecological networks in the age of information

Maxime Lenormand

► **To cite this version:**

Maxime Lenormand. Multiscale socio-ecological networks in the age of information. NetSci 2018, 2018, Paris, France. 10.1371/journal.pone.0206672 . hal-02890710

HAL Id: hal-02890710

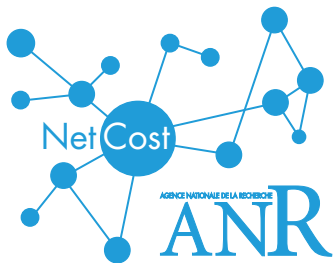
<https://hal.inrae.fr/hal-02890710v1>

Submitted on 6 Jul 2020

HAL is a multi-disciplinary open access archive for the deposit and dissemination of scientific research documents, whether they are published or not. The documents may come from teaching and research institutions in France or abroad, or from public or private research centers.

L'archive ouverte pluridisciplinaire **HAL**, est destinée au dépôt et à la diffusion de documents scientifiques de niveau recherche, publiés ou non, émanant des établissements d'enseignement et de recherche français ou étrangers, des laboratoires publics ou privés.

Multiscale socio-ecological networks in the age of information



Maxime Lenormand
UMR TETIS, Irstea, France

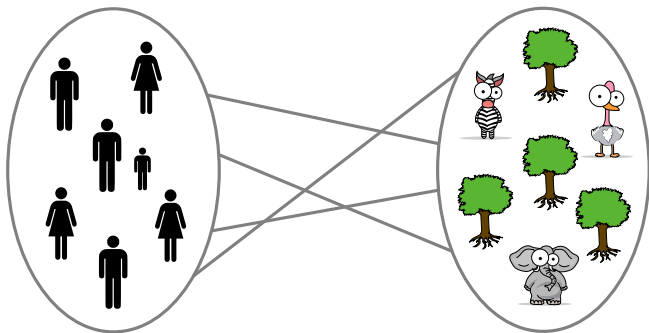
NetSci 2018 | Paris, France

June 13, 2018

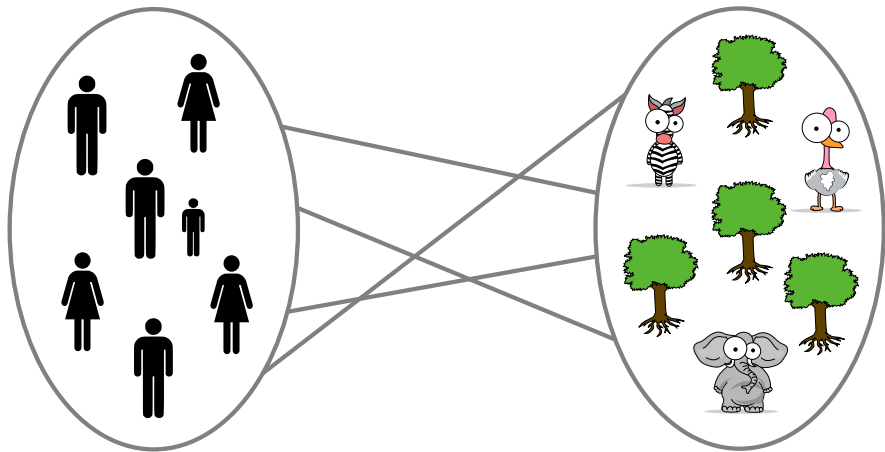


Motivation

How can we use **ICT data** to model and visualize **complex socio-ecological interactions** to better understand how **people** interact with **natural spaces**?

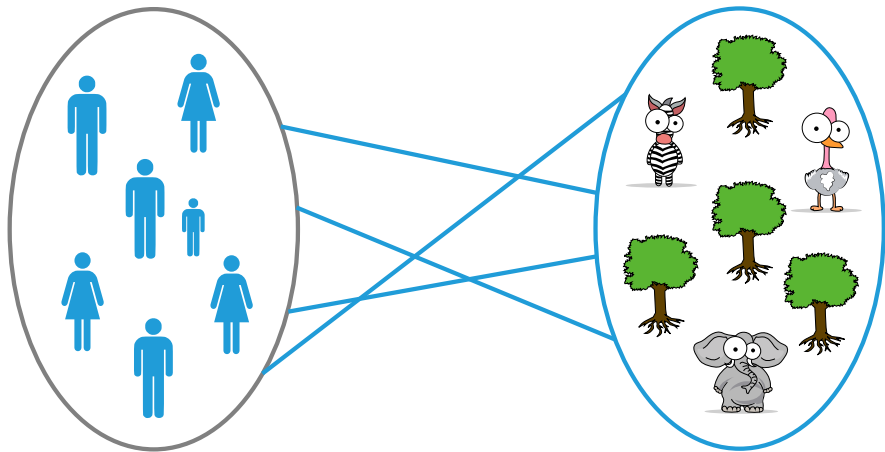


Spatio-temporal network



Δ_t Time window

Spatio-temporal network




Δ_t Time window


16 case study sites



Flickr data

flickr Explore Create Sign In [Sign Up](#)



 eMammal [+ Follow](#)

PRO eMammal 219 Followers • 3 Following 206,458 Photos Joined 2010

[Photostream](#)

[Albums](#)

[Favorites](#)

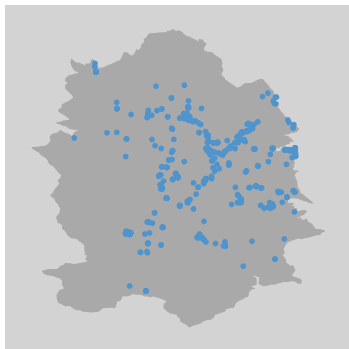
[Groups](#)

More ▾



Flickr data

From more than **100,000** to **17,500** photos

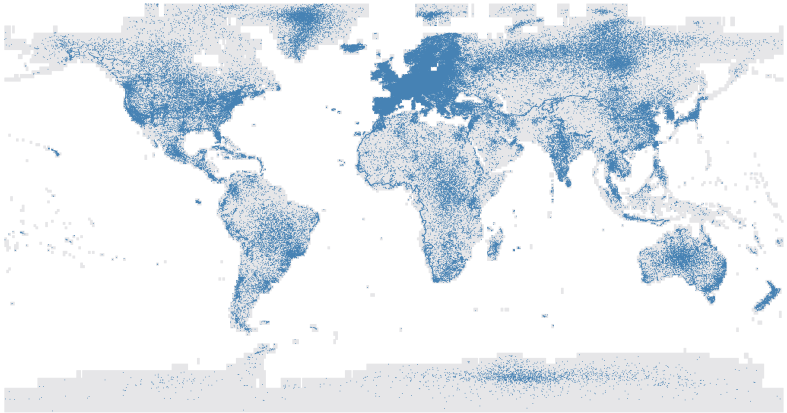


Every Flickr photos has been classified and validated following the Common International Classification of Ecosystem Services



Flickr users


Identification of users' place of residence




13,000 photos taken by **2,300** users

Flickr group & survey

flickr Explore Create Log In [Sign Up](#)



 Help us to protect the environment! [+ Join Group](#)

416 Members • 5.8K Photos • 3 Discussions Group Since June 11, 2017







[Overview](#) [Discussions](#) [Photos](#) [Members](#) [Map](#)

Photo pool

[View 5,800 photos](#)

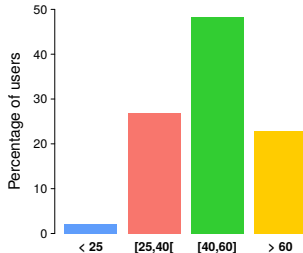
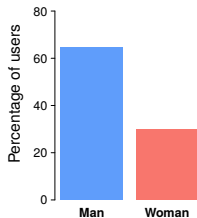
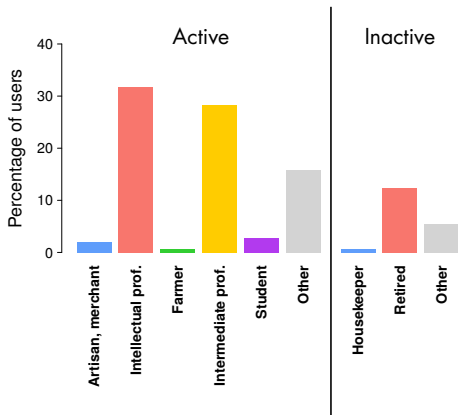


Discussions

Title	Author	Replies	Last Replier	Latest Post
Clarification about the study	 SP.Pictures	4	 Fouaustral PRO	2 months ago
ⓘ	 joepdeumes PRO	2	 joepdeumes PRO	3 months ago
FAQ	 SP.Pictures	3	 SP.Pictures	3 months ago

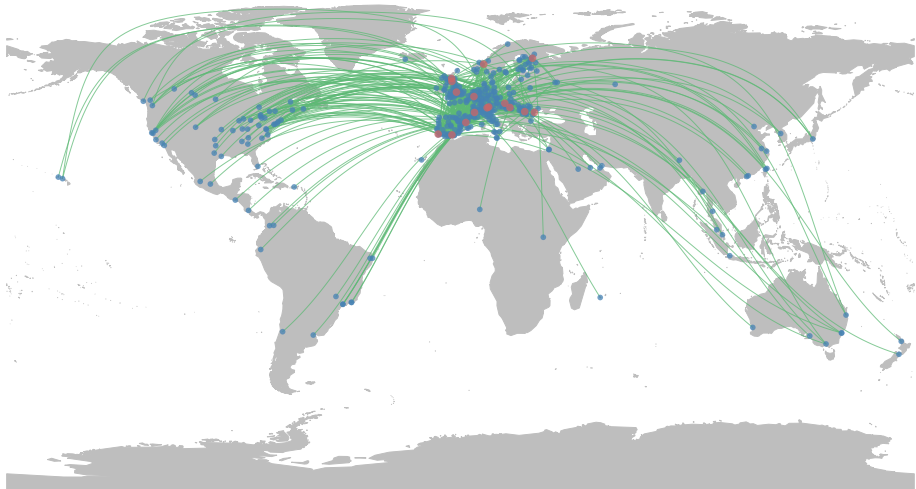
Flickr group & survey

11% response rate

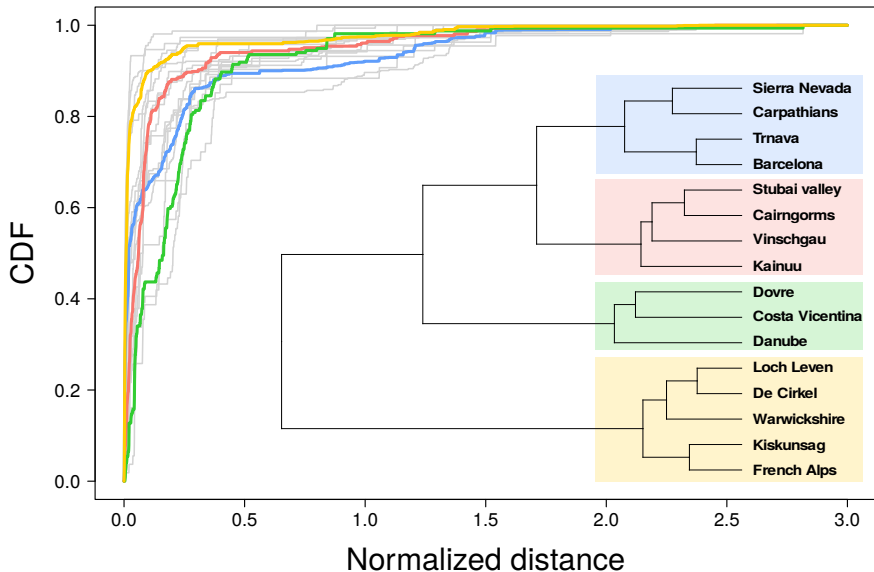


90% of accuracy in the users' place of residence detection!

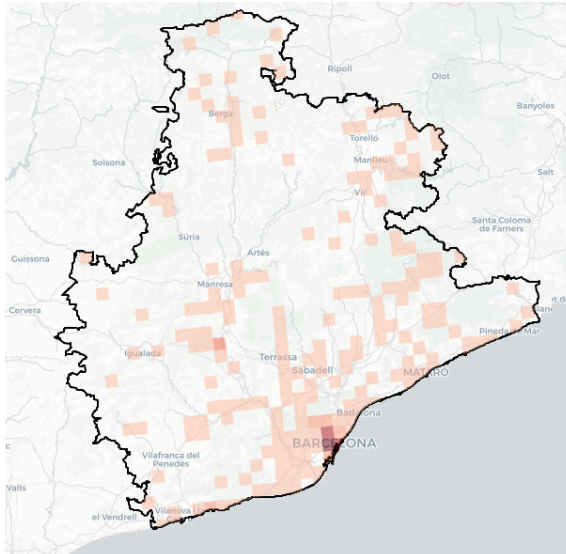
Spatio-temporal network



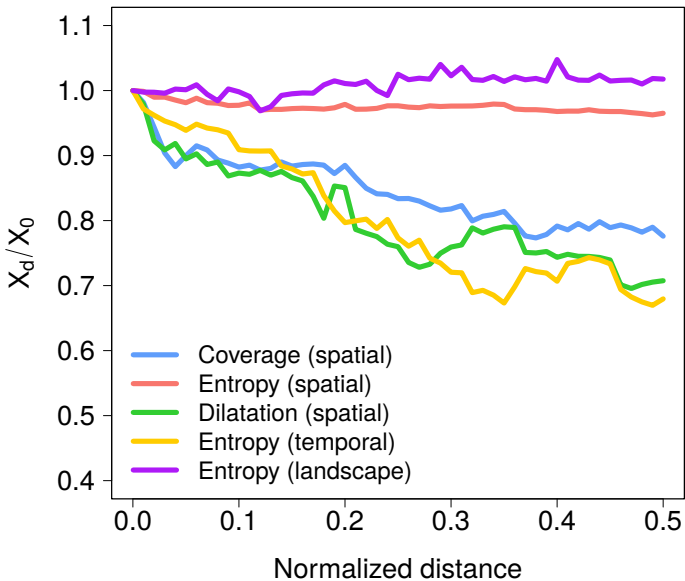
Attractiveness



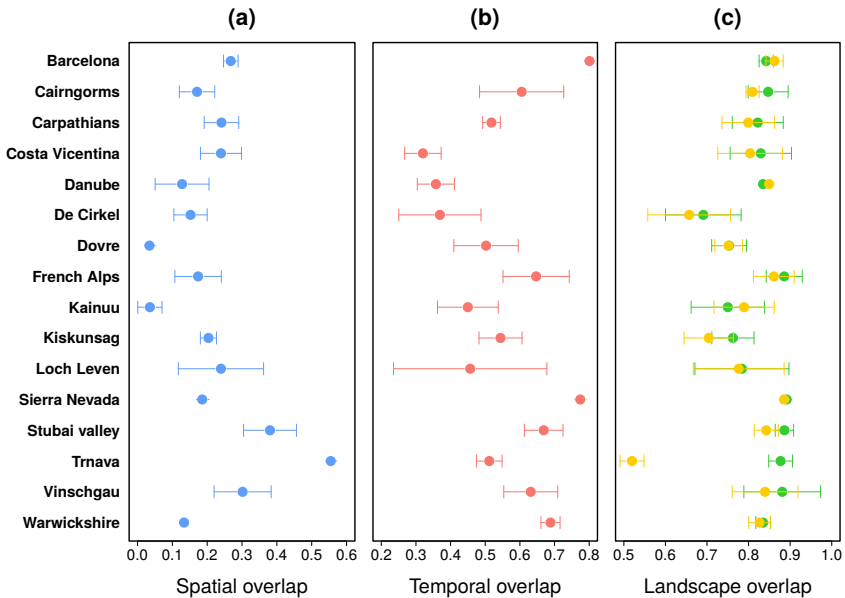
Exploration



Exploration



Exploration



Take home message

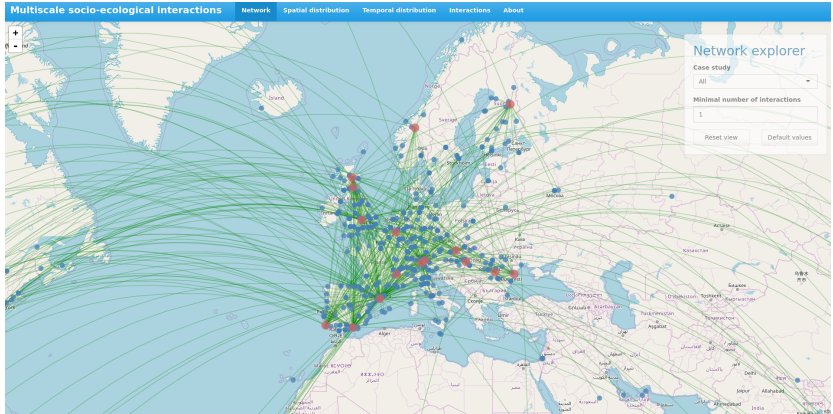
Modelling of social-ecological interactions with a spatio-temporal network & ICT data

Diversity of spatio-temporal contexts, individuals and type of interactions



Resilience planning

AHIA project outputs



<https://github.com/maximelenormand/AHIA>

Self-promotion

Physics Reports 734 (2018) 1–74



ELSEVIER

Contents lists available at [ScienceDirect](#)

Physics Reports

journal homepage: www.elsevier.com/locate/physrep



Human mobility: Models and applications

Hugo Barbosa^a, Marc Barthelemy^{b,c}, Gourab Ghoshal^{a,*}, Charlotte R. James^d,
Maxime Lenormand^e, Thomas Louail^g, Ronaldo Menezes^{h,*}, José J. Ramasco^f,
Filippo Simini^d, Marcello Tomasini^h

^a Department of Physics & Astronomy and Goergen Institute of Data Science, University of Rochester, Rochester, NY, USA

^b Institut de Physique Théorique, CEA, CNRS-URA 2306, F-91191, Gif-sur-Yvette, France

^c Centre d'Etudes et de Mathématique Sociales, EHESS, Paris 75006, France

^d Department of Engineering Mathematics, University of Bristol, UK

^e Irstea, UMR TETIS, 500 rue JF Breton, 34093, Montpellier, France

^f Instituto de Física Interdisciplinar y Sistemas Complejos IFISC (CSIC-UIB), Campus UIB, 07122 Palma de Mallorca, Spain

^g CNRS, UMR 8504 Géographie-cités, 13 rue du four, F-75006 Paris, France

^h BioComplex Laboratory, School of Computing, Florida Institute of Technology, Melbourne, USA

