



HAL
open science

Non-stationarity of extreme ground snow load in the French Alps

Erwan Le Roux, Guillaume Evin, Nicolas Eckert, Juliette Blanchet, Samuel Morin

► **To cite this version:**

Erwan Le Roux, Guillaume Evin, Nicolas Eckert, Juliette Blanchet, Samuel Morin. Non-stationarity of extreme ground snow load in the French Alps. EGU General Assembly 2020, EGU, May 2020, Virtual, France. 10.5194/egusphere-egu2020-464 . hal-02912585

HAL Id: hal-02912585

<https://hal.inrae.fr/hal-02912585v1>

Submitted on 10 Oct 2024

HAL is a multi-disciplinary open access archive for the deposit and dissemination of scientific research documents, whether they are published or not. The documents may come from teaching and research institutions in France or abroad, or from public or private research centers.

L'archive ouverte pluridisciplinaire **HAL**, est destinée au dépôt et à la diffusion de documents scientifiques de niveau recherche, publiés ou non, émanant des établissements d'enseignement et de recherche français ou étrangers, des laboratoires publics ou privés.



Distributed under a Creative Commons Attribution 4.0 International License



Non-stationary extreme value analysis of ground snow loads in the French Alps: a comparison with building standards

Erwan Le Roux¹, Guillaume Evin¹, Nicolas Eckert¹, Juliette Blanchet², and Samuel Morin³

¹Univ. Grenoble Alpes, INRAE, UR ETNA, Grenoble, France

²Univ. Grenoble Alpes, Grenoble INP, CNRS, IRD, IGE, Grenoble, France

³Univ. Grenoble Alpes, Univ. Toulouse, Météo-France, CNRS, CNRM, CEN Grenoble, Grenoble, France

Correspondence: Erwan Le Roux (erwan.le-roux@inrae.fr)

Received: 16 March 2020 – Discussion started: 27 March 2020

Revised: 9 September 2020 – Accepted: 25 September 2020 – Published: 6 November 2020

Abstract. In a context of climate change, trends in extreme snow loads need to be determined to minimize the risk of structure collapse. We study trends in 50-year return levels of ground snow load (GSL) using non-stationary extreme value models. These trends are assessed at a mountain massif scale from GSL data, provided for the French Alps from 1959 to 2019 by a meteorological reanalysis and a snowpack model. Our results indicate a temporal decrease in 50-year return levels from 900 to 4200 m, significant in the northwest of the French Alps up to 2100 m. We detect the most important decrease at 900 m with an average of -30% for return levels between 1960 and 2010. Despite these decreases, in 2019 return levels still exceed return levels designed for French building standards under a stationary assumption. At worst (i.e. at 1800 m), return levels exceed standards by 15% on average, and half of the massifs exceed standards. We believe that these exceedances are due to questionable assumptions concerning the computation of standards. For example, these were devised with GSL, estimated from snow depth maxima and constant snow density set to 150 kg m^{-3} , which underestimates typical GSL values for the snowpack.

jured (BBC News, 2006). In France, snow loads over Rousillon in 1986, caused both EUR 17 million in damages and a major power outage due to overloading of electrical cables and pylons by sticking snow (Vigneau, 1987; Naaïm-Bouvet et al., 2000).

Ground snow load (GSL) is defined as the pressure exerted by accumulated snow on the ground, which can be directly associated with accumulated snow on structures, e.g. on roofs (Sanpaolesi et al., 1998). In detail, the observed height of accumulated snow is called snow depth (in m). The density of this snow can vary widely between precipitation particles ($\rho_{\text{SNOW}} \approx 100\text{ kg m}^{-3}$) and a ripe snowpack ($\rho_{\text{SNOW}} \approx 500\text{ kg m}^{-3}$). Multiplying snow depth by snow density gives the surface mass of snow (in kg m^{-2}). Surface mass of snow corresponds to the snow water equivalent (SWE), which is the height of water (in mm) we could obtain if we melt all the snow in a 1 m^2 area. Indeed, since water density is $\rho_{\text{WATER}} = 1000\text{ kg m}^{-3}$, we have that 1 mm of water on 1 m^2 has a surface mass of 1 kg m^{-2} . Snow load is the pressure exerted by this surface mass of snow (in Nm^{-2} or Pa) and equals the SWE times the gravitational acceleration ($g = 9.81\text{ m s}^{-2}$).

Snowpack variables related to GSL (snow depth, SWE) evolve with climate change. As shown in Table 1, the literature on past trends in snowpack variables for the Western Alps shows a decreasing trend. The literature on projected trends also points to a decrease (stronger for the second half of the 21st century under a high greenhouse gas emission scenario than with strong reductions in greenhouse gas emissions) for mean winter (December–May) SWE in the European Alps (IPCC, 2019). However, anthropogenic

1 Introduction

Extreme snow loads can generate economic damages and casualties. For instance, more than USD 200 million in roof damages occurred during the Great Blizzard of 1993 (O'Rourke and Auren, 1997). In 2006, at the Katowice International Fair, the roof of one of the buildings collapsed under a layer of snow, leading to 65 casualties and 140 in-

climate change impacts climatic variables in their averages as well as in their extremes (Klein Tank and Können, 2003; IPCC, 2012). For instance, annual maxima of snow depth have decreased in Switzerland (Marty and Blanchet, 2012). Projected trends in extreme snowpack variables are prone to strong uncertainties (Strasser, 2008; Beniston et al., 2018) as both mean winter temperature (IPCC, 2019) and winter precipitation extremes (Rajczak and Schär, 2017) are projected to increase in the European Alps.

The impact of climate change on GSL was not taken into account in current European standards for structural design, a.k.a Eurocodes (Sanpaolesi et al., 1998), which drive French standards (Biétry, 2005). These standards define that structures must withstand their own weight plus a pressure proportional to a characteristic value. The latter is the stationary 50-year return level of GSL, exceeded once every 50 years on average. Thus, studying trends in 50-year return levels of GSL is needed for updating these standards (Croce et al., 2018). In the literature, past and projected trends in 50-year return levels of GSL have rarely been investigated with the exception of Rózsás et al. (2016), Il Jeong and Sushama (2018), and Croce et al. (2018). In the French Alps, several studies focused on extreme snow variables (Biétry, 2005; Gaume et al., 2012, 2013) and their spatial dependence (Nicolet et al., 2015, 2016, 2017, 2018). However, trends in 50-year return levels of GSL remain unexplored.

We fill these gaps by studying annual maxima of GSL provided every 300 m of altitude at a mountain massif scale for the 23 French Alps massifs. We rely on the SAFRAN–Crocus reanalysis (Vernay et al., 2019) produced by the SAFRAN–Crocus chain (Durand et al., 2009a; Vionnet et al., 2012) available for the period 1959–2019. The major advantage of this reanalysis is to benefit from an advanced snowpack model which provides daily estimates of ground snow load values, while previous studies relied on approximate values directly related to snow depth with a crude estimation of snow density (Biétry, 2005). Thus, our approach considers only natural snow processes: we do not account for snow removal throughout the year and consider all processes (accumulation, thaw–freeze, melt, compaction etc.) occurring during the winter season.

Our statistical methodology consists in applying stationary and non-stationary extreme value models to annual maxima time series. We select one model by massif and altitude with the Akaike information criterion (AIC) statistical criterion, validate the selected model with the Anderson–Darling test, and assess its significance with the likelihood ratio statistical test. Finally, for each massif and altitude, we compute the relative change of 50-year return levels of GSL between 1960 and 2010, and we compare the non-stationary return level in 2019 with the stationary return level designed for French building standards.

This paper is organized as follows. Section 2 presents our data. Section 3 describes standards for ground snow load. Then, Sect. 4 explains our methodology. Results, discussion

and conclusions are introduced in Sects. 5, 6 and 7, respectively.

2 Ground snow load data

The study area covers the French Alps which are located between Lake Geneva to the north and the Mediterranean Sea to the south (Fig. 1). The climate is contrasted, colder and wetter in the northern Alps and much drier in the southern Alps (Durand et al., 2009a). This region is typically divided into 23 mountain massifs of about 1000 km². We rely on the SAFRAN–Crocus reanalysis (Vernay et al., 2019) from the SAFRAN–Crocus chain (Durand et al., 2009a; Vionnet et al., 2012) available from August 1958 to July 2019 at the scale of these massifs, every 300 m of altitude from 300 to 4800 m. Contrary to gridded products, this reanalysis assumes for a given altitude the homogeneity of the different variables at the scale of the massif. Also, annual maxima are available from 1959 to 2019. Indeed, annual maxima denote the maxima during a year centred on the winter season; for example, annual maxima for 1959 correspond to the maxima from the 1 August 1958 to the 31 July 1959.

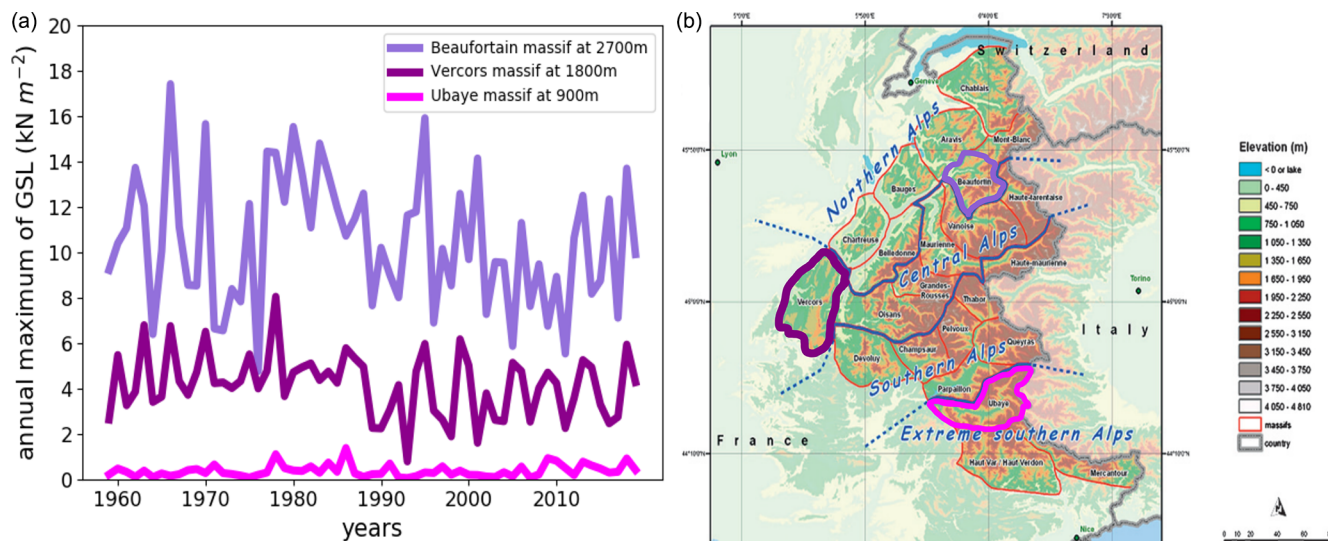
To sum up, GSL equals SWE from the SAFRAN–Crocus reanalysis times the gravitational acceleration. We study time series of annual maxima of GSL for each massif from 1959 to 2019 every 300 m of altitude from 300 to 4800 m (Fig. 1).

The SAFRAN–Crocus reanalysis is produced by a chain of two models. First, SAFRAN meteorological reanalysis (Durand et al., 2009a) performs a spatialization of the weather data (precipitation, temperature, humidity, radiation, wind speed) over the massifs and altitudes. Then, the Crocus snowpack model (Vionnet et al., 2012) infers snow depth and SWE based on SAFRAN time series. Crocus is a one-dimensional multilayer physical snow scheme, which simulates the snowpack evolution over time, by accounting for several processes such as thermal diffusion, phase changes and metamorphism.

The SAFRAN–Crocus reanalysis has been evaluated against various observation datasets, as reported in previous publications (Lafaysse et al., 2013; Vionnet et al., 2016; Revuelto et al., 2018; Vionnet et al., 2019). In most cases, the evaluation is carried out against in situ snow depth observations and remote sensing snow cover information. For example, Vionnet et al. (2016) evaluated SAFRAN–Crocus snow depth data against 79 observed snow depth data in the French Alps for the 2010–2014 time period, with mean bias and standard error values of 18 and 37 cm, respectively. This corresponds to typical values for snow modelling systems applied in various regions on Earth. Because of lower data availability, evaluations against observed SWE values are less frequent than against snow depth data, although we note that Crocus has been shown to perform extremely well compared to other snow cover models, in terms of SWE, across many observation sites worldwide (Krinner et al., 2018) and

Table 1. Past trends in snowpack variables, snow depth (HS) and snow water equivalent (SWE), according to existing studies in the Western Alps, i.e. in Italy (IT), France (FR) and Switzerland (CH). In the Trend column, “north” and “south” refer to the considered country.

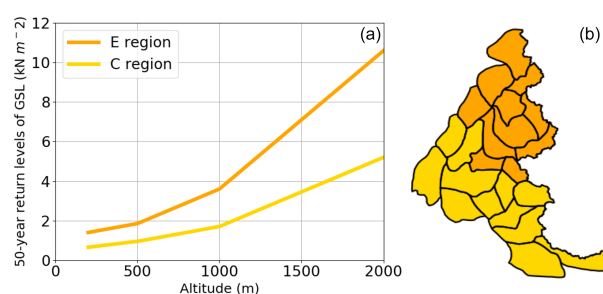
Variable	Indicator	Trend	Country	Time	Source
HS	Seasonal mean (Nov to Apr)	Decrease	CH	1931–1999	Latenser and Schneebeli (2003)
	Winter mean (Dec to Feb)	Decrease in the north	FR	1958–2007	Durand et al. (2009b)
	Mean annual maxima	Decrease	CH	1930–2010	Marty and Blanchet (2012)
	Seasonal mean (Nov to May)	Decrease	IT	1951–2010	Terzago et al. (2013)
	Seasonal mean (Nov to Apr)	Decrease in the south	CH	1961–2012	Schöner et al. (2019)
SWE	1 April value	Decrease	IT	1965–2007	Bocchiola and Diolaiuti (2010)
	1 April value	Decrease	FR, IT, CH	1968–2012	Marty et al. (2017)

**Figure 1.** (a) Three time series of annual maxima of ground snow load (GSL) from 1959 to 2019 for 3 massifs at low (900 m), mid (1800 m) or high (2700 m) altitude and (b) 23 mountains massifs of the French Alps and their orographic features (Durand et al., 2009a).

SAFRAN–Crocus exhibits satisfying performance in terms of snow depth and SWE in the Pyrenees (Quéno et al., 2016), providing confidence, with respect to other existing datasets, in using this model chain for GSL values. Further model evaluations, using additional datasets, are required to continue assessing and improving the quality of the model chain. Furthermore, we highlight that we only use SAFRAN–Crocus reanalysis values on flat field, and we did not use simulations on slopes; hence it is not relevant to discuss the impact of slope and aspect on the results of this study.

3 Standards for ground snow load in the French Alps

GSL French standards (Biétry, 2005) are based mostly on Eurocodes (Sanpaolesi et al., 1998) and on prior French standards. Each French department, and by extension each French Alps massif, is associated with a region (C or E) that sets characteristic 50-year return level values of GSL between 200 and 2000 m of altitude (Fig. 2).

**Figure 2.** (a) French standards 50-year return levels of ground snow load (GSL) with respect to altitude for regions C and E. (b) Map of the region type for each massif.

French standards were elaborated with annual maxima time series of snow depth on the ground measured at stations from 1945 to 1992. GSL data were approximated from annual maxima of snow depth and by assuming that snow density equals 150 kg m^{-3} . Following Eurocodes, the character-

istic value of GSL is defined as the 50-year return level of a Gumbel distribution (Sect. 4). This distribution was fitted using the least squares method and by removing the top annual maximum when considered exceptional (Biétry, 2005) according to a criterion not explicitly mentioned in the French report cited as reference. However, in the Eurocodes, the standard method was to consider the top maximum as exceptional if it was 1.5 times larger than the second largest maximum (Sanpaolesi et al., 1998). In our methodology, we do not remove the top annual maximum.

4 Statistical methodology

Following extreme value theory, we employ two stationary models and six non-stationary models for time series of annual maxima of GSL (Sect. 4.1). We select a single model for each time series (i.e. for each massif and altitude) with the AIC statistical criterion, validate this model with the Anderson–Darling test, and assess its significance with the likelihood ratio statistical test (Sect. 4.2). Finally, we compute the relative change of 50-year return levels of GSL between 1960 and 2010, quantify the uncertainty of return levels in 2019 to compare them with the stationary return levels designed for French standards (Sect. 4.3).

4.1 Stationary and non-stationary models based on extreme value distributions

Climate extremes are generally studied with statistics. As underlined in the IPCC special report on climate extremes, a large amount of statistical literature builds on extreme indices to examine moderate extremes (IPCC, 2012). However, since we focus on extremes that are more rare, it is recommended to rely on extreme value theory (EVT, Coles, 2001). Such statistical models provide and hypothesize additional prior information in order to compensate for the limited number of empirical observations that commonly span only several decades. These models can be used to extrapolate beyond the empirical observations and to estimate return levels (Sect. 4.3).

EVT offers a suitable framework to analyse extreme values, i.e. to model the form of the tail for almost any probability distribution. Asymptotically, as the central limit theorem motivates sample means modelling with the normal distribution, the Fisher–Tippett–Gnedenko theorem (Fisher and Tippett, 1928; Gnedenko, 1943) encourages sample maxima modelling with the generalized extreme value (GEV) distribution. This theorem justifies that the maximum of finite-sized blocks with a large enough block size can be modelled with the GEV distribution. In practice, an annual maximum is thus usually considered a realization of a GEV distribution. Three parameters define the GEV distribution: a location μ , a scale $\sigma > 0$ and a shape ζ (a.k.a. extremal index or tail index). The GEV distribution includes three specific types of

distributions: Weibull ($\zeta < 0$), Fréchet ($\zeta > 0$) and Gumbel ($\zeta = 0$). Thus, by definition, if Z represents an annual maximum of GSL, we can assume that Z follows a GEV distribution (i.e. $Z \sim \text{GEV}(\mu, \sigma, \zeta)$), which implies the following:

$$P(Z \leq z) = \begin{cases} \exp[-(1 + \zeta \frac{z-\mu}{\sigma})_+^{-\frac{1}{\zeta}}] & \text{if } \zeta \neq 0 \\ \text{and where } u_+ \text{ denotes } \max(u, 0), & \\ \exp[-\exp(-\frac{z-\mu}{\sigma})] & \text{if } \zeta = 0, \\ \text{in other words if } Z \sim \text{Gumbel}(\mu, \sigma). & \end{cases} \quad (1)$$

In a context of climate change, a large amount of hydrological literature builds on non-stationary modelling (Milly et al., 2008) to assess whether a time series is generated by a unique probability distribution (stationary model) or if the generating probability distribution is changing (non-stationary model). Non-stationary extremes are usually studied with both non-stationary modelling and EVT (Katz et al., 2002). Annual maxima are assumed independent but not necessarily identically distributed (Serinaldi and Kilsby, 2015). Such approaches combine a stationary random component (a fixed extreme value distribution) with non-stationary deterministic functions that map each temporal covariate t to the changing parameters of the distribution (Montanari and Koutsoyiannis, 2014). In a non-stationary context, Zhang et al. (2004) showed that tests based on this parametric approach have stronger power of detection when compared with non-parametric methods.

We consider non-stationarity for both the Gumbel distribution and the more general GEV distribution, since they represent natural extensions of the Gumbel distribution which was used for French building standards (Sect. 3). For any model, we have $Z(t) \sim \text{GEV}(\mu(t), \sigma(t), \zeta(t))$, as the Gumbel distribution corresponds to $\zeta(t) = 0$. For a model \mathcal{M} , we denote as $\theta_{\mathcal{M}}$ all parameters for its functions ($\mu(t)$, $\sigma(t)$ and $\zeta(t)$). We focus on simple linear functions due to the limited length of time series (60 years). The linearity starts in 1959, which is the first winter with available data. As shown in Table 2, we consider only models with a constant shape parameter but where the location and/or the scale parameter can vary linearly with years t .

4.2 Model selection, validation and significance

Model selection. Let $\mathbf{z} = (z_{1959}, \dots, z_{2019})$ represent a time series of annual maxima of GSL, i.e. for a massif and an altitude (Sect. 2). First, models are fitted with the maximum likelihood method. For every model \mathcal{M} , we compute the maximum likelihood estimator $\hat{\theta}_{\mathcal{M}}$, which corresponds to the parameter $\theta_{\mathcal{M}}$ that maximizes the likelihood:

$$\hat{\theta}_{\mathcal{M}} = \operatorname{argmax}_{\theta_{\mathcal{M}}} \mathcal{L}(\theta_{\mathcal{M}}; \mathbf{z}) \text{ where } \mathcal{L}(\theta_{\mathcal{M}}; \mathbf{z}) = p(\mathbf{z} | \theta_{\mathcal{M}}) = \prod_t p(z_t | \mu(t), \sigma(t), \zeta(t)) = \prod_t \frac{\partial P(Z(t) \leq z_t)}{\partial z_t}.$$

Table 2. Statistical models considered for annual maxima of GSL are based on the Gumbel or the GEV distribution and are extensions of the stationary Gumbel model. For non-stationary models, the location and/or the scale vary linearly with years t after the starting year 1959.

Model type	Distribution	Model name	$\mu(t)$	$\sigma(t)$	$\zeta(t)$	$\theta_{\mathcal{M}}$	$\#\theta_{\mathcal{M}}$
Stationary	Gumbel	\mathcal{M}_0	μ_0	σ_0	0	(μ_0, σ_0)	2
	GEV	\mathcal{M}_{ζ_0}	μ_0	σ_0	ζ_0	$(\mu_0, \sigma_0, \zeta_0)$	3
Non-stationary	Gumbel	\mathcal{M}_{μ_1}	$\mu_0 + \mu_1 \times (t - 1959)$	σ_0	0	(μ_0, μ_1, σ_0)	3
	GEV	$\mathcal{M}_{\zeta_0, \mu_1}$	$\mu_0 + \mu_1 \times (t - 1959)$	σ_0	ζ_0	$(\mu_0, \mu_1, \sigma_0, \zeta_0)$	4
Non-stationary	Gumbel	\mathcal{M}_{σ_1}	μ_0	$\sigma_0 + \sigma_1 \times (t - 1959)$	0	$(\mu_0, \sigma_0, \sigma_1)$	3
	GEV	$\mathcal{M}_{\zeta_0, \sigma_1}$	μ_0	$\sigma_0 + \sigma_1 \times (t - 1959)$	ζ_0	$(\mu_0, \sigma_0, \sigma_1, \zeta_0)$	4
Non-stationary	Gumbel	$\mathcal{M}_{\mu_1, \sigma_1}$	$\mu_0 + \mu_1 \times (t - 1959)$	$\sigma_0 + \sigma_1 \times (t - 1959)$	0	$(\mu_0, \mu_1, \sigma_0, \sigma_1)$	4
	GEV	$\mathcal{M}_{\zeta_0, \mu_1, \sigma_1}$	$\mu_0 + \mu_1 \times (t - 1959)$	$\sigma_0 + \sigma_1 \times (t - 1959)$	ζ_0	$(\mu_0, \mu_1, \sigma_0, \sigma_1, \zeta_0)$	5

(2)

Then, for each z , i.e. for each massif and altitude, we select the model \mathcal{M}_N with the minimal AIC value (Akaike, 1974), as it is the best information criterion in a non-stationary context with small sample sizes (Kim et al., 2017). We define

$$\begin{aligned} \mathcal{M}_N &= \operatorname{argmin}_{\mathcal{M} \text{ in Table 2}} \operatorname{AIC}(\mathcal{M}), \text{ where } \operatorname{AIC}(\mathcal{M}) \\ &= 2 \times [\#\theta_{\mathcal{M}} - \log \mathcal{L}(\hat{\theta}_{\mathcal{M}}; z)], \\ &\text{where } \#\theta_{\mathcal{M}} \text{ is the cardinality of } \theta_{\mathcal{M}}. \end{aligned} \tag{3}$$

The selected model \mathcal{M}_N can be any model from Table 2, i.e. a stationary or a non-stationary model. The subscript N designates the number of additional parameters compared to the stationary Gumbel model \mathcal{M}_0 , i.e. $N = \#\theta_{\mathcal{M}_N} - \#\theta_{\mathcal{M}_0}$.

Model validation. Quantile–quantile (Q – Q) analysis is performed for all selected models. To apply this analysis to both stationary and non-stationary model, we rely on Katz (2012), who suggests the following: (i) to transform the data to stationary Gumbel and (ii) to use a Q – Q plot analysis on the transformed data with respect to a Gumbel distribution. Q – Q plots reveal that transformed data are well fitted by a stationary Gumbel distribution; hence that data are well fitted by the selected models (Appendix B). Moreover, according to the comparative study of Abidin et al. (2012), the most powerful goodness-of-fit test for the Gumbel distribution is a combination of the Anderson–Darling test and the maximum likelihood estimator. We apply this test on the transformed data using Saeb (2018) and found that we cannot reject the null hypothesis (samples generated from the Gumbel model) at the 5% significance level for almost all our selected models (98%), justifying their good fit. We refer to Appendix B for more details.

Model significance. If the selected model \mathcal{M}_N is not the model \mathcal{M}_0 , then – since models are nested – we can compute the significance of \mathcal{M}_N with respect to \mathcal{M}_0 with a likelihood ratio test (Coles, 2001). This test assesses whether there is enough evidence to reject the stationary Gumbel model

\mathcal{M}_0 in favour of the selected model \mathcal{M}_N . The null hypothesis can be stated as follows: the N additional parameters of the model \mathcal{M}_N can be set to zero. In other words, we want to check if setting to zero the N additional parameters of the model \mathcal{M}_N are supported by the data z . Under the null hypothesis, the likelihood ratio test statistic (LR) has an asymptotic $\chi^2_{\chi^2_N}$ distribution: $\operatorname{LR}(\hat{\theta}_{\mathcal{M}_N}, \hat{\theta}_{\mathcal{M}_0}, z) = -2 \log \frac{\mathcal{L}(\hat{\theta}_{\mathcal{M}_0}; z)}{\mathcal{L}(\hat{\theta}_{\mathcal{M}_N}; z)} \sim \chi^2_N$, where \sim means distributed under suitable regularity conditions. In practice, the test works as follows. We first choose a 0.05 level of significance. Then, if LR is greater than $q_{\chi^2_N}$, the $1-0.05 = 0.95$ quantile of the χ^2_N distribution, we reject the nested model \mathcal{M}_0 in favour of the selected model \mathcal{M}_N . If the selected model \mathcal{M}_N is non-stationary, we consider the associated trend as significant.

4.3 Return levels

In a stationary context, the T -year return level, which corresponds to a return period of T years, is the classical metric to quantify hazards of extreme events (Cooley, 2012). For a stationary model, there is a one-to-one relationship between a return level (a quantile exceeded each year with probability p) and a return period (a duration exceeded every $T = \frac{1}{p}$ years on average).

In a non-stationary context, return level and return period concepts (Cooley, 2012) become further ambiguous, are prone to misconceptions and can lead to misleading conclusions (Serinaldi, 2015). We focus on the yearly level for a fixed probability of exceedance, a.k.a effective return level (Katz et al., 2002; Cheng et al., 2014), as it conveys best that hazard evolves with time.

For the stationary Gumbel model \mathcal{M}_0 , the return level $z_p(\theta_{\mathcal{M}_0})$ is defined as the level exceeded each year with probability p . In other words, if Z denotes an annual maximum, then $P(Z \leq z_p(\theta_{\mathcal{M}_0})) = 1 - p$. This return level is constant through time and equals $z_p(\theta_{\mathcal{M}_0}) = \mu_0 - \sigma_0 \log(-\log(1 - p))$. In this paper, we set $p = \frac{1}{50} = 0.02$ as it corresponds to the 50-year return period defined by

French standards (based on European standards) for the design working life of buildings (Sect. 3).

For the selected model \mathcal{M}_N , the return level is defined as the yearly level for a fixed probability of exceedance p . For any model considered in Table 2, we obtain $z_p(\theta_{\mathcal{M}_N}, t) = \mu_0 + \mu_1 \times (t - 1959) - \frac{\sigma_0 + \sigma_1 \times (t - 1959)}{\zeta_0} [1 - (-\log(1 - p))^{-\zeta_0}]$, where we set μ_1, σ_1 or ζ_0 to 0 if they are not defined in the model \mathcal{M}_N . For example, for the Gumbel model \mathcal{M}_0 , the return level is constant: for any year t , $z_p(\theta_{\mathcal{M}_0}, t) = \lim_{\zeta_0 \rightarrow 0} [\mu_0 + \frac{\sigma_0}{\zeta_0} (1 - (-\log(1 - p))^{-\zeta_0})] = \mu_0 - \sigma_0 \log(-\log(1 - p))$.

For any considered model, the time derivative of the return level is constant, as $\frac{\partial z_p(\theta_{\mathcal{M}_N}, t)}{\partial t} = \mu_1 - \frac{\sigma_1}{\zeta_0} (1 - (-\log(1 - p))^{-\zeta_0})$. It quantifies the yearly change of return level. Thus, the relative difference of return levels between year t_1 and year t_2 is as follows:

$$\begin{aligned} &\text{relative change } (z_p(\theta_{\mathcal{M}_N}, t_1), z_p(\theta_{\mathcal{M}_N}, t_2)) \\ &= \frac{z_p(\theta_{\mathcal{M}_N}, t_2) - z_p(\theta_{\mathcal{M}_N}, t_1)}{z_p(\theta_{\mathcal{M}_N}, t_1)} \\ &= \frac{t_2 - t_1}{z_p(\theta_{\mathcal{M}_N}, t_1)} \times \frac{\partial z_p(\theta_{\mathcal{M}_N}, t)}{\partial t}. \end{aligned} \quad (4)$$

In the context of maximum likelihood estimation, uncertainty related to return levels can be derived by the delta method, which quickly provides confidence intervals both in the stationary and non-stationary case (Coles, 2001; Gilleland and Katz, 2016). First, the return level estimator associated with the maximum likelihood estimator simply equals $z_p(\hat{\theta}_{\mathcal{M}})$. Then, due to the asymptotic normality of the maximum likelihood estimator (MLE), we can assume that, even with a finite number of data, the MLE is normally distributed. Therefore, under regularity conditions, limits of the $1 - \alpha = 95\%$ confidence interval are $\hat{\theta}_{\mathcal{M}} \pm q_{\frac{\alpha}{2}} \times v_{z_p}(\hat{\theta}_{\mathcal{M}})$, where $q_{\frac{\alpha}{2}}$ is the $1 - \frac{\alpha}{2}$ quantile of the standard normal distribution, and v_{z_p} is a function that maps each parameter $\theta_{\mathcal{M}}$ to the variance of the approximate normal distribution associated with its return level $z_p(\theta_{\mathcal{M}})$. For a full expression of the function v_{z_p} and for details on the delta method, we refer to Theorem 2.4 of Coles (2001). In particular, this theorem explains that the delta method is valid for $\zeta_0 < 1$, which is respected in our case as $-0.5 \leq \zeta_0 \leq 0.5$ (Sect. 4.4). Also, uncertainty of non-stationary return levels $z_p(\hat{\theta}_{\mathcal{M}}, t)$ can be obtained by incorporating the covariate t in the function z_p .

4.4 Application

First, we exclude four time series of annual maxima with more than 10% of zeros, i.e. years without GSL. Then, we fit models to time series and retain only those models with $-0.5 \leq \zeta_0 \leq 0.5$. This impacts three time series. We make this choice because $\zeta_0 > 0.5$ designates distributions with an “exploding” tail which are known to be physically implausible (Martins and Stedinger, 2000). Following Sect. 4.2, we

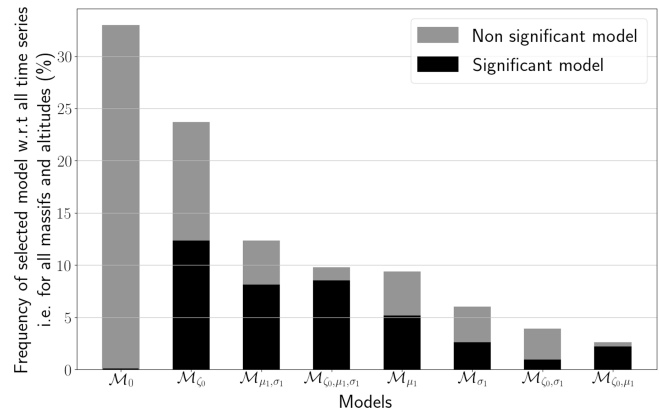


Figure 3. Distribution of selected models. Frequency of selected model (in %) with respect to all time series, i.e. for all massifs and altitudes. For the selection procedure and the definition of significance, we refer to Sect. 4.2.

select one model for each time series (i.e. for each massif and altitude) with the AIC statistical criterion. Then, we exclude the five time series (2%) where the selected model does not pass the Anderson test. Finally, we assess if the selected model is significantly more appropriate than the stationary Gumbel model \mathcal{M}_0 with a likelihood ratio test.

5 Results

5.1 Selected models

Figure 3 shows that a stationary model, i.e. models \mathcal{M}_0 and \mathcal{M}_{ζ_0} , is selected for a majority (57%) of time series studied (Sect. 2). Models with a linearity in both the location and scale parameters are the most frequently selected non-stationary models (22%). For both stationary and non-stationary models, Gumbel models are always more often selected than their corresponding GEV models (Figs. 3, 4). All in all, we highlight that 39% of selected models are significantly more appropriate than the stationary Gumbel model \mathcal{M}_0 .

Figure 4 depicts shape parameter values for the selected models at 900, 1800 and 2700 m. We notice that a majority of massifs are white, illustrating that a (stationary or non-stationary) Gumbel model (i.e. $\zeta_0 = 0$) is selected (Sect. 5). This emphasizes that a Gumbel distribution often explains more succinctly the data than a GEV distribution. Also, with the GEV distribution, the estimated most likely shape parameter ζ_0 is often quite uncertain; that is, confidence intervals are large, which is the main reason why French standards did not rely on it. This uncertainty in ζ_0 likely comes from the limited length of time series. Therefore, additional data would enable a more robust estimation of ζ_0 and thus reduce uncertainty.

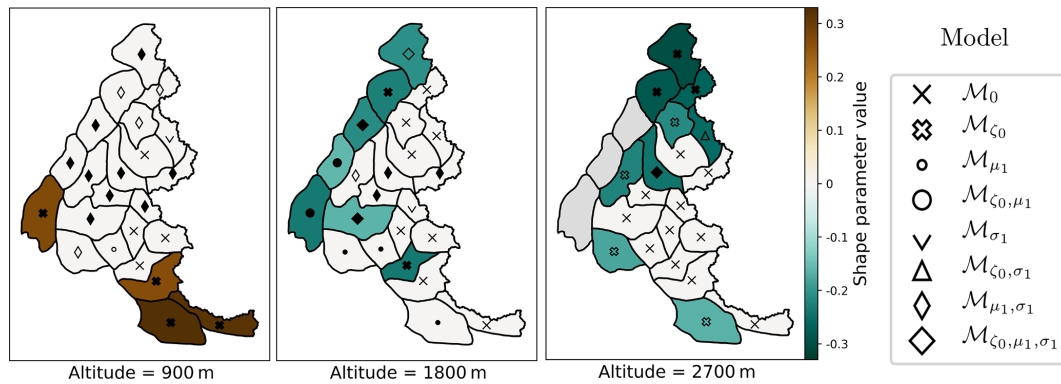


Figure 4. Shape parameter values for the selected models at low (900 m), mid (1800 m) or high (2700 m) altitude. Markers show selected model \mathcal{M}_N , while filled markers symbolize models that are significantly better than the Gumbel model \mathcal{M}_0 (Sect. 4.2). Grey areas denote either time series that were excluded (Sect. 4.4) or missing data, e.g. when the altitude considered is above the top altitude of the massif.

In Fig. 4, we further observe that non-null shape parameters at low altitudes (900 m) are always positive (brown-coloured massifs); that is, a Fréchet distribution is preferred. On the other hand, for high altitudes (1800 and 2700 m) non-null shape parameters are always negative (green-coloured massifs); that is, a Weibull distribution is favoured. Similar results for the shape parameter have been observed for snow depth by Blanchet et al. (2009), Blanchet and Lehning (2010), and Schellander and Hell (2018). This reflects the different nature of annual maxima of GSL between low and high altitudes. At high altitudes, annual maxima are mainly due to snowpack accumulation during several months, while at low altitudes this accumulation is limited, and thus annual maxima roughly correspond to heavy precipitation.

5.2 Trends in return levels of ground snow load

Figure 5 maps the relative change of 50-year return levels of GSL between 1960 and 2010 (Eq. 4) at 900, 1800 and 2700 m (see Appendix A for maps at all altitudes). Quantitatively, for northwest massifs, we observe that return levels have decreased by up to 60% at 900 m (dark blue), while at 1800 m this decrease is less marked (pale blue). Qualitatively, these decreasing trends are frequently due to significant changes both in the location and scale parameters of the Gumbel or GEV distribution (small and large diamond-shaped filled markers). At 2700 m, or in the south at 900 and 1800 m, we often do not observe any trends (white), since stationary models are selected (small and large cross-shaped markers).

Figure 6 emphasizes the evolution of decreasing trends between 900 and 4800 m of altitude. We observe that decreasing trends are significant for more than one-third of the massifs, located in the northwest of the Alps (Appendix A), up to 2100 m (black bars). In half a century, return levels have dropped on average by up to 30% at 900 m. Until 3300 m, we observe a decline in the percentage of massifs with a significant decreasing trend. Above 3300 m, we do not find any sig-

nificant decreasing trend. For both the relative decrease and the percentage of massifs with a decreasing trend, we notice a similar declining pattern. We also notice more decline between 3300 and 3900 m than at 3000 m, which echoes results from Lüthi et al. (2019), who found that, in the Alps above 3000 m, the relative decrease for projected winter mean of fresh SWE is more marked than at 3000 m (see their Fig. 8). We emphasize, however, that most meteorological observations used as input to the SAFRAN–Crocus reanalysis are situated below 2000 m. Therefore, trends beyond 2000 m altitude should be considered with great caution.

Figure 7 illustrates that, for altitudes 300 and 600 m, in general no trends are found except for a few decreasing trends at 600 m and two time series (1 at 300 m, 1 at 600 m) with important increasing trends (+100% for one massif at 600 m). Despite this important increase in relative change, annual maxima of snow load remain small ($< 1 \text{ kN m}^{-2}$). Indeed, we found that these annual maxima correspond to snow load accumulated in a few days and thus are mainly driven by heavy precipitation rather than a seasonal snowpack accumulation. In particular, we hypothesize that the important increasing trend observed in the south at 600 m (colour red) might be caused by a regional phenomenon, resulting from Mediterranean humid air masses flowing northward into the north of Italy and then westward to the eastern part of the French Alps, that might be intensifying with global warming (Garavaglia et al., 2010; Gottardi et al., 2012; Faranda, 2020).

To sum up trends in return levels of ground snow load, from 900 to 4800 m, either no trends or decreasing trends of 50-year return levels of GSL are found (Figs. 5, 6, Fig. A1), while at 300 and 600 m, no clear trends are found (Fig. 7).

5.3 Comparison of return levels of ground snow load with French standards

We compare 50-year return levels of GSL and their uncertainty (Sect. 4.3) to French standards first for two massifs

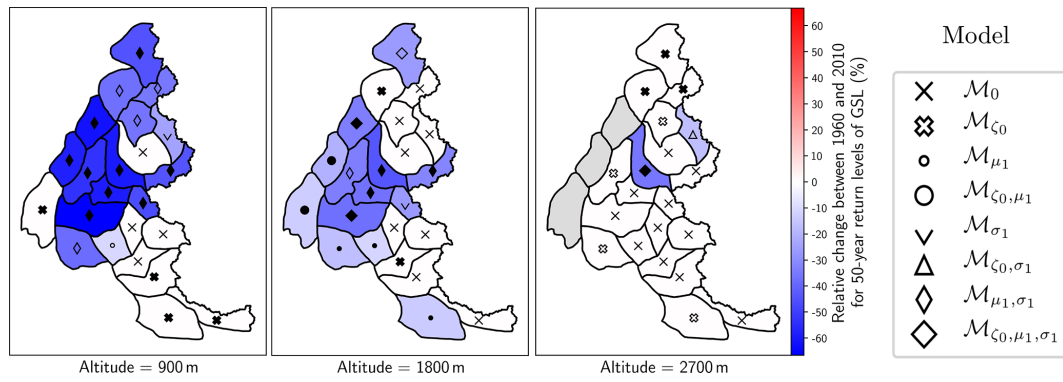


Figure 5. Trends in 50-year return levels of ground snow load (GSL) between 1960 and 2010 at low (900 m), mid (1800 m) or high (2700 m) altitude. Markers show selected model \mathcal{M}_N , while filled markers symbolize models that are significantly better than the Gumbel model \mathcal{M}_0 (Sect. 4.2). Grey areas denote missing data, e.g. when the altitude considered is above the top altitude of the massif.

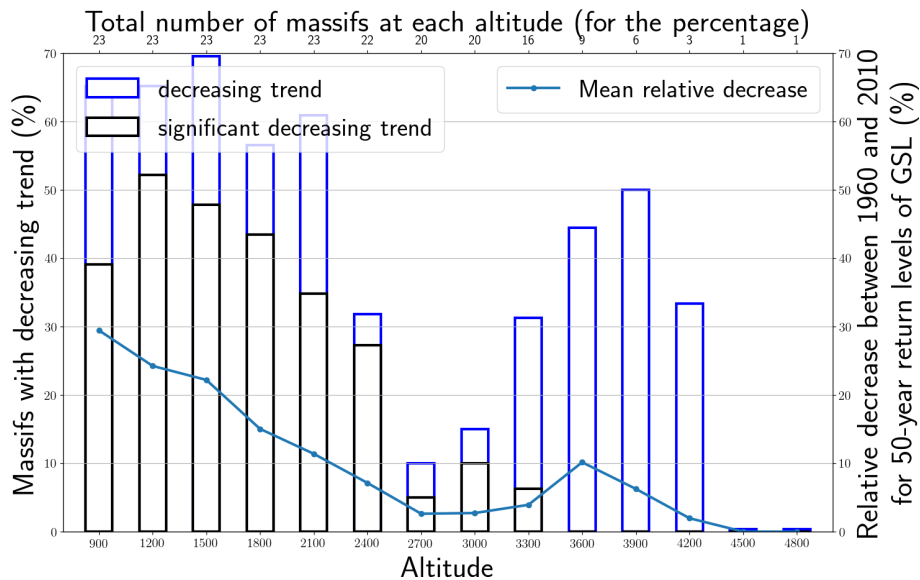


Figure 6. Temporal decreasing trend of 50-year return levels of ground snow load (GSL) between 900 and 4800 m of altitude.

(Fig. 8) then globally (Fig. 9). We consider GSL data from 300 to 1800 m because standards are defined from 200 to 2000 m (Sect. 3).

Figure 8 illustrates these levels and their uncertainty for two massifs (Vercors and Beaufortain) associated with different French standards regions. Standards are often exceeded at higher altitudes (e.g. at 1800 m). Also, Fig. 8 exemplifies the impact of accounting for decreasing trends in return levels. Indeed, we observe that return levels from the stationary Gumbel model \mathcal{M}_0 (left) are often larger than effective return levels in 2019 (last year of data) from the selected model \mathcal{M}_N (right).

Figure 9 sums up the comparison between French standards and 50-year return levels for all 23 massifs. We display (i) the percentage of massifs whose return level exceeds standards and (ii) the mean relative difference between return levels and standards. Limits of the confidence intervals are

approximated as the percentage of exceedances for the limits of return levels' 95 % confidence interval are displayed with black bars. Limits of the confidence intervals for the mean relative difference are displayed in shaded blue. The number of massifs considered is equal to 7 at 300 m, 17 at 600 m and 23 at 900 m and above.

First, if we estimate return levels from data with the French standards method (Fig. 9 left), i.e. with a stationary Gumbel model \mathcal{M}_0 , and GSL data approximated with snow depth obtained from reanalysis and $\rho_{\text{SNOW}} = 150 \text{ kg m}^{-3}$, then we observe few exceedances (less than 10 %) and that on average return levels remain below standards, as the mean relative difference remains below zero. Thus, in this setting, estimations from our reanalysis are consistent with French standards.

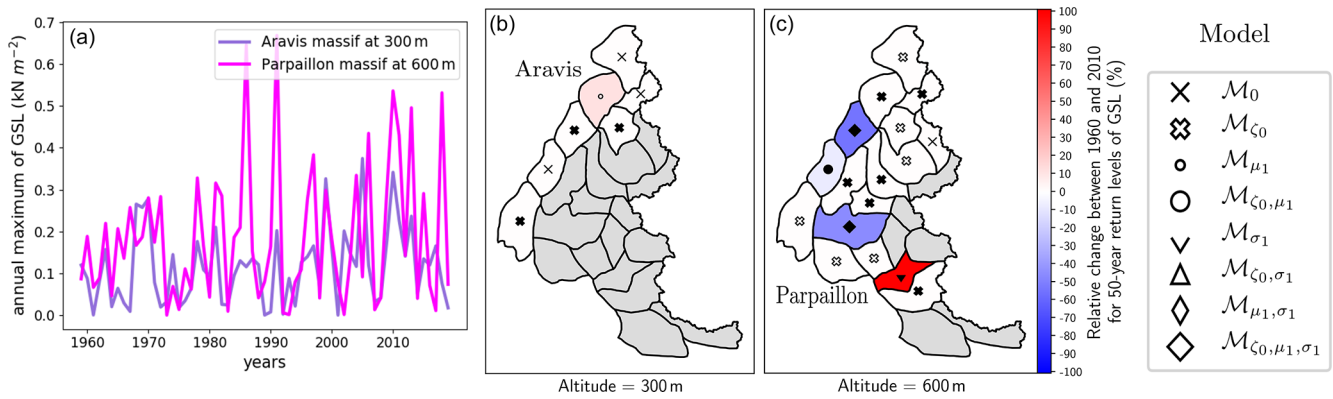


Figure 7. (a) Time series of annual maxima for ground snow load (GSL) for two massifs (Aravis and Parpaillon) either at 300 m or 600 m of altitude. (c) Trend for annual maxima of ground snow load (GSL) at 300 and 600 m of altitude. Markers show selected model \mathcal{M}_N , while filled markers symbolize models that are significantly better than the Gumbel model \mathcal{M}_0 (Sect. 4.2). Grey areas denote either time series that were excluded (Sect. 4.4) or missing data, e.g. when the altitude considered is above the top altitude of the massif.

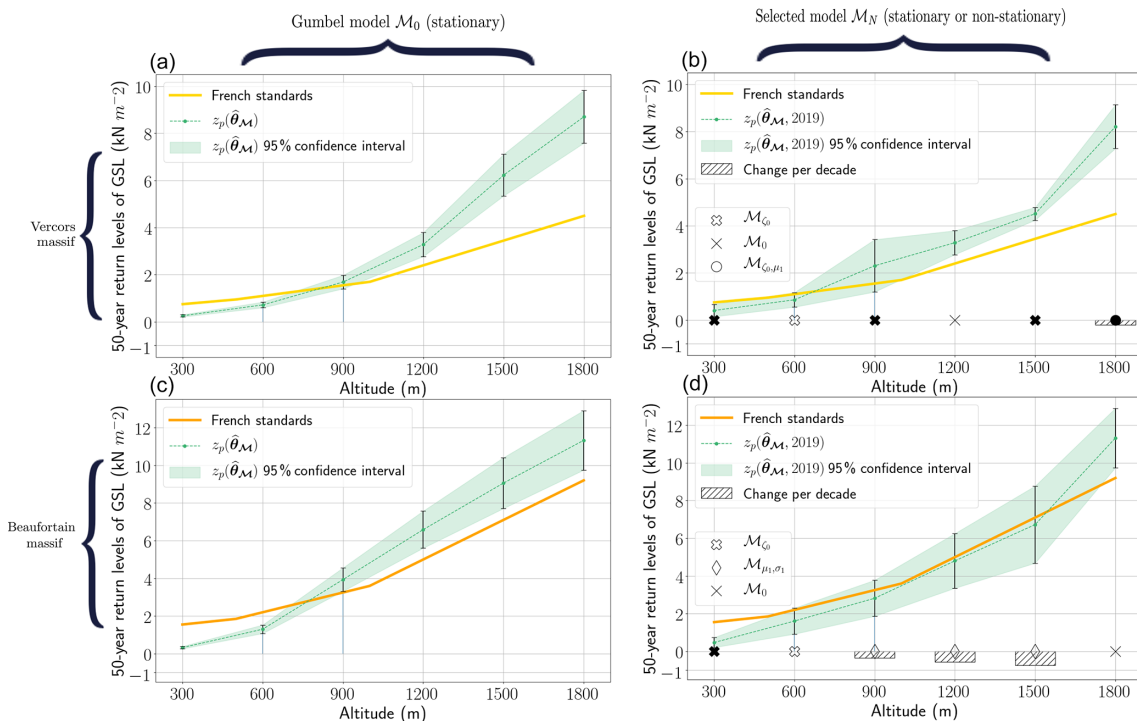


Figure 8. 50-year return levels of ground snow load (GSL) from altitude 300 to 1800 m for Vercors (a, b) and Beaufortain (c, d) massifs. Return levels (green line) and their uncertainty (shaded green and black bars) are estimated from the data either with the stationary Gumbel model \mathcal{M}_0 (a, c) or with the selected model \mathcal{M}_N (b, d). If \mathcal{M}_N is a non-stationary model, the return level is the effective return level in 2019, and we display the change of return levels per decade (striped histogram), i.e. 10 times the time derivative of return level (Sect. 4.3).

However, if we consider the actual GSL, i.e. computed with SWE from the reanalysis, then French standards drastically underestimate return levels. Indeed, with a stationary Gumbel model \mathcal{M}_0 , then for altitudes above or equal to 900 m, French standards are exceeded for a majority of massifs (Fig. 9 centre). But, if we consider the selected model \mathcal{M}_N , i.e. if we account for the decreasing trend in 50-year return levels, we have fewer exceedances at all altitudes (Fig. 9

right). In the latter case, at worst, i.e. at 1800 m, return levels exceed standards by 15 % on average, and half of the massifs (60 %) exceed standards.

Furthermore, despite the fact that uncertainty intervals (black bars) can be large, it does not impact the main conclusions of this article. Indeed, in Fig. 9 right at 1800 m, we still have between 40 % and 80 % of massifs exceeding French standards.

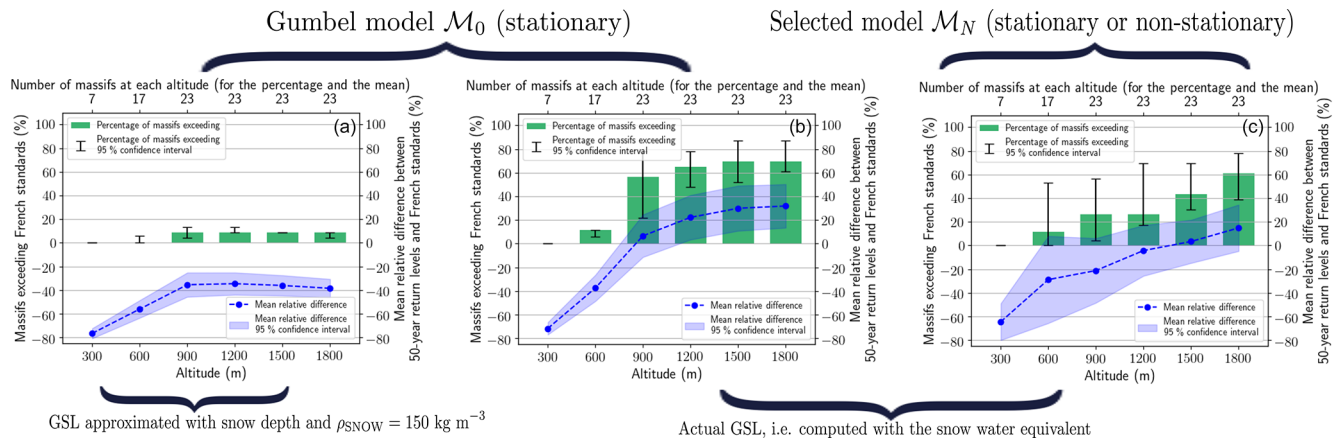


Figure 9. Comparison of 50-year return levels of ground snow load (GSL) with French standards between 300 and 1800 m. We show the percentage of massifs (green histogram) whose return levels exceed French standards and the mean relative difference (blue line) between return levels and standards. **(a)** similar to French standards estimation (stationary Gumbel \mathcal{M}_0 and GSL approximated with snow depth obtained from the reanalysis and $\rho_{\text{SNOW}} = 150 \text{ kg m}^{-3}$). **(b)** stationary Gumbel \mathcal{M}_0 and actual GSL, i.e. computed with SWE from the reanalysis. **(c)** selected model \mathcal{M}_N (if \mathcal{M}_N is non-stationary, the return level is the effective return level in 2019) and actual GSL.

6 Discussion

6.1 Methodological considerations

We discuss in depth the statistical models chosen for this study. It is well-known that an annual-maximum-based approach can be wasteful in terms of data (Coles, 2001). However, since our objective is to estimate 50-year return levels and since we have 60 years of data, we still decide to rely on the annual-maximum-based approach (with the GEV distribution) rather than on the concurrent approach based on threshold exceedances (with the generalized Pareto distribution). Also, with the GEV distribution, our methodology is a direct extension of French building standards (Sect. 3).

For the non-stationary models, we focus on simple deterministic functions of time ($\mu(t)$, $\sigma(t)$, $\zeta(t)$) due to the limited length of time series. A linear non-stationarity seems preferable to a non-stationarity based on the Heaviside step function due to the continuous nature of climate change. We start the linear non-stationary at the initial year, i.e. 1959.

We decided to consider non-stationarity only for the location and scale parameter. Indeed, in the literature, a linear non-stationarity is considered sometimes only for the location parameter (Fowler et al., 2010; Trambly and Somot, 2018) but more often both for the location and the scale (or log-transformed scale for numerical reasons) parameters (Katz et al., 2002; Kharin and Zwiers, 2004; Marty and Blanchet, 2012; Wilcox et al., 2018). Also, we consider a non-stationarity for both parameters because the scale parameters were not proportional to the location parameters, which could have otherwise simplified our parametrization. Finally, the shape parameter is typically considered constant in the literature, and we follow this approach.

For time series containing zeros, French standards rely on a mixed discrete–continuous distribution. They fit both a Gumbel distribution on non-zero annual maxima and the probability of having a non-zero annual maxima. However, with our reanalysis data, this approach sometimes leads to fitting non-stationary extreme value models with fewer than 40 non-zero annual maxima. Therefore, we rather decided to exclude any time series with more than 10 % of zeros (Sect. 4.4), to ensure that we fit models with more than 55 non-zero annual maxima. In practice, our approach gives 50-year return levels close to the approach from French standards (absolute difference remains lower than 0.1 kN m^{-2}).

6.2 On the limitation to approximate annual maxima of ground snow load with annual maxima of snow depth

SWE times the gravitational constant equals GSL. However, most countries do not measure SWE but only have access to snow depth (HS) (Haberkorn et al., 2019). In that case, snow density is required to obtain SWE (and subsequently GSL) from HS (Sect. 1). In particular, French standards approximate annual maxima of GSL with annual maxima of HS and by assuming a constant snow density, equal to $\rho_{\text{SNOW}} = 150 \text{ kg m}^{-3}$. In Fig. 10, we highlight limitations of such approaches with our reanalysis that provides, for the whole snowpack, daily values of SWE, HS and thus of snow density.

We find that annual maxima of GSL are always underestimated by French standards' approximation (Fig. 10 left). The main reason is that, when annual maxima of GSL are reached, snow density is on average largely superior to $\rho_{\text{SNOW}} = 150 \text{ kg m}^{-3}$ (Fig. 10 centre). Indeed, we observe that at the time of the annual maxima of GSL the snow den-

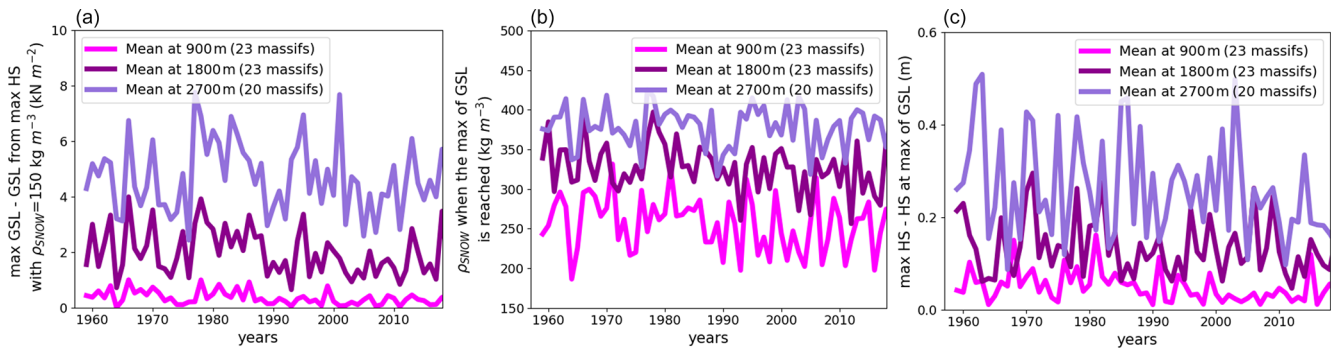


Figure 10. Limitation of approximating annual maxima of ground snow load (GSL) from annual maxima of snow depth (HS). (a) Difference between annual maxima of GSL and GSL computed from annual maxima of HS and $\rho_{\text{SNOW}} = 150 \text{ kg m}^{-3}$. (b) Snow density when annual maxima of GSL are reached. (c) Difference between annual maxima of HS and HS when annual maxima of GSL are reached.

sity is around $\approx 350 \text{ kg m}^{-3}$ on average at 2700 m and close to $\approx 250 \text{ kg m}^{-3}$ on average at 900 m. Finally, despite high variations along the years, we also notice that, when annual maxima of GSL are reached, snow depth can be much lower than the annual maxima of snow depth (Fig. 10 right), which is another argument against the use of snow depth maxima as a proxy for GSL maxima.

7 Conclusions

Based on both a reanalysis and a snowpack model, we detect an overall temporal decreasing trend of 50-year return levels of ground snow load (GSL) between 900 and 4200 m, which is significant up to 2100 m in the northwest of the French Alps. This confirms other studies in the Western Alps which also found overall decreasing trends in linked snowpack variables: SWE and snow depth. The largest decrease is found at 900 m with -30% for return levels between 1960 and 2010. Despite these decreases, in 2019 return levels still exceed return levels designed for French building standards under a stationary assumption. At worst, i.e. at 1800 m, return levels exceed standards by 15% on average, and half of the massifs exceed standards.

We hypothesize that this number of exceedances might be due to an underestimation of GSL by French standards. Indeed, these standards were devised with GSL estimated from snow depth maxima and constant snow density equal to 150 kg m^{-3} , which underestimate typical GSL values for the snowpack. Another reason for these exceedances might be ill-designed relationships between altitude and snow load. As shown in Fig. 2, French standards return levels increase linearly with altitude in three steps. Indeed, French standards (Biétry, 2005) follow previous national standards that advised for a linear relationship between altitude and snow load instead of relying on European standards' results that showed a quadratic relationship for the Alpine region (Sanpaolesi et al., 1998). Thus, at higher altitudes, French standards underestimate actual return levels, which might explain

the augmenting percentage of exceedance observed with the altitude (Fig. 9 right).

Many potential extensions of this work could be considered. First, our methodology could be extended with more advanced definitions of non-stationary return levels (Rootzén and Katz, 2013; Serinaldi, 2015). Also, instead of considering time series of annual maxima as spatially independent, we believe that our analysis may benefit from an explicit modelling of the spatial dependence between extremes. Then, reanalyses are increasingly available at the European scale (e.g. Soci et al., 2016), which could be used for extending this work to a wider geographical scale. This requires, however, remaining cognizant of the limitations of such reanalyses, in particular (i) the temporal heterogeneity of the meteorological data input to these reanalyses (Vidal et al., 2010); (ii) the lack of observations at high altitudes, requiring caution in analysing trends for high-altitude locations; and (iii) model errors (e.g. snowpack model errors) which need to be taken into account when analysing the results.

Finally, even if, according to our analysis, GSL exceeds French standards return levels in the French Alps, (Fig. 9 right), few destructions related to snow loads actually occurred. Several reasons might explain that. First, French standards consider a coefficient that maps GSL return levels to roof snow load return level, i.e. multiplication by a coefficient that summarizes several roof features: shape, exposure and thermal transmission (Sanpaolesi et al., 1998). This coefficient might be overprotective. Also, following European standards, roof designers must add safety coefficients to ensure roofs' reliability. Indeed, they actually build roofs that withstand the sum of (i) the characteristic value of permanent action, i.e. self-weight, multiplied by a safety coefficient equal to 1.35 and (ii) the characteristic value of variable action, i.e. roof snow load return level, multiplied by a safety coefficient equal to 1.5 (Sanpaolesi et al., 1998 Eq. 8). Above all, French standards do not take into account that, after intense days of snowfall, the snow accumulated on the roof either slides off or is removed. In that case, the main risk

lies in extreme snow events that might accumulate enough snow in a few days to exceed French standards. Undeniably, most known snow load destructions resulted from such intense snow events, sometimes combined with liquid precipitation that often heavily increases snow load. The response of these short but extreme and complex snow events to climate change might be an interesting topic for future research.

Appendix A: Trends in return levels of ground snow load

In this section, we report, for every 300 m of altitude from 900 to 4200 m, the map of the relative change of 50-year return levels of GSL between 1960 and 2010 (Fig. A1). Trends at 4500 and 4800 m are not reported, since they only concern the Mont Blanc massif, where no significant trend is inferred at these altitudes.

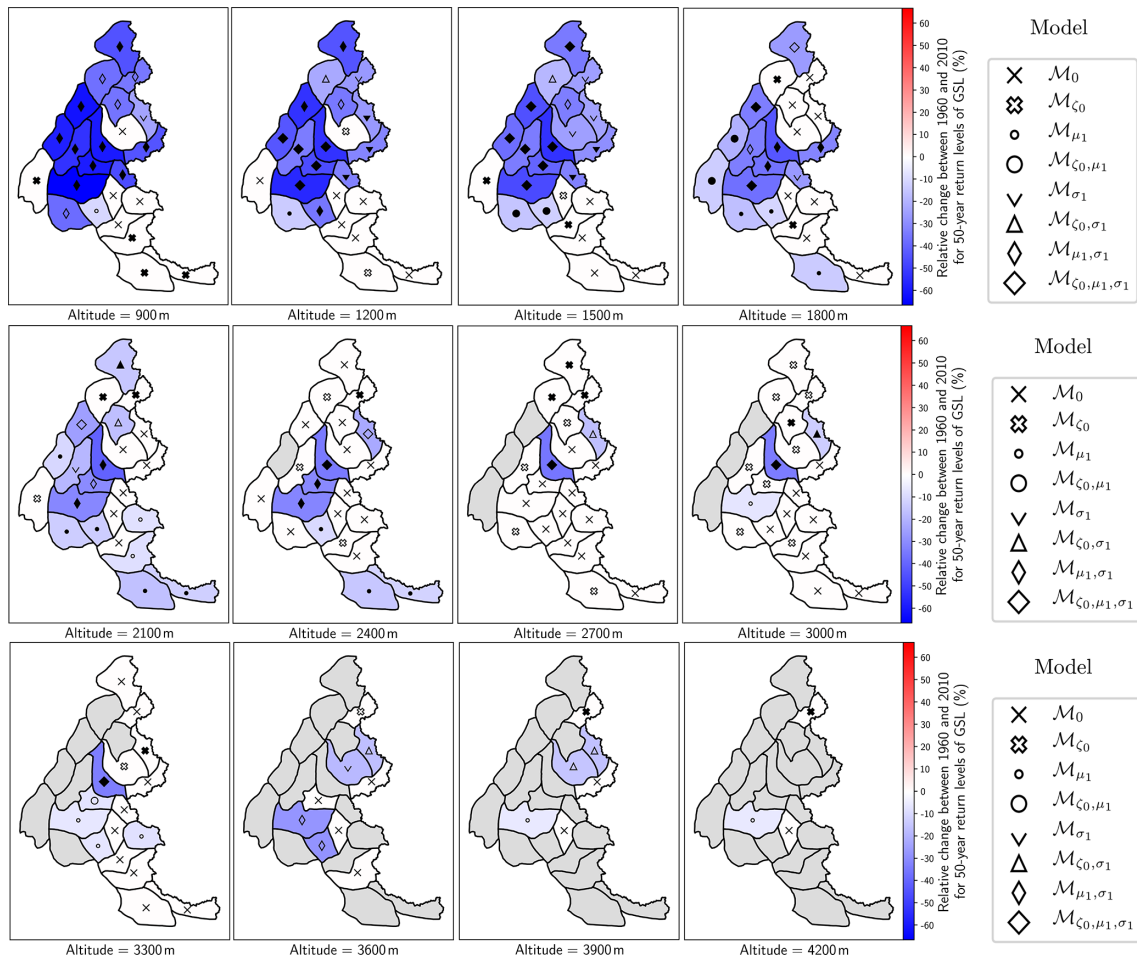


Figure A1. Trends in return levels of ground snow load (GSL) between 900 and 4200 m of altitude. Markers show selected model \mathcal{M}_N , while filled markers symbolize models that are significantly better than the Gumbel model \mathcal{M}_0 (Sect. 4.2). Grey areas denote either time series that were excluded (Sect. 4.4) or missing data, e.g. when the altitude considered is above the top altitude of the massif.

Appendix B: Detailed methodology for the model validation

Quantile–quantile plot. Standard diagnosis tools for both stationary and non-stationary extreme value models (Coles, 2001; Katz, 2012) rely on a probability integral transformation f to the standard Gumbel distribution, i.e. $\text{Gumbel}(0, 1)$. Indeed, if $Z(t) \sim \text{GEV}(\mu(t), \sigma(t), \zeta(t))$, then $f(Z(t)) = \frac{1}{\zeta(t)} \log \left(1 + \zeta(t) \frac{Z(t) - \mu(t)}{\sigma(t)} \right) \sim \text{Gumbel}(0, 1)$. Thus, if $\mathbf{z} = (z_{1959}, \dots, z_{2019})$ represent a time series of annual maxima, then let $\tilde{z}_{1959} = f(z_{1959}), \dots, \tilde{z}_{2019} = f(z_{2019})$.

Quantile–quantile (Q – Q) plot is a standard diagnosis based on the comparison of empirical quantiles (computed from the empirical distribution) and theoretical quantiles (computed from the expected distribution). On the one hand, $\tilde{z}_{(1)}, \dots, \tilde{z}_{(61)}$ are the empirical quantiles, which correspond to the ordered values of the \tilde{z}_t . On the other hand, $-\log \left(-\log \left(\frac{1}{62} \right) \right), \dots, -\log \left(-\log \left(\frac{61}{62} \right) \right)$ correspond to the theoretical quantiles. Indeed, if $\tilde{Z} \sim \text{Gumbel}(0, 1)$, then $P(\tilde{Z} \leq \tilde{z}) = \exp -e^{-\tilde{z}} = \frac{i}{62} \leftrightarrow \tilde{z} = -\log \left(-\log \left(\frac{i}{62} \right) \right)$. Thus, the Q – Q plot is comprised of the pairs $\left\{ \left(-\log \left(-\log \left(\frac{i}{62} \right) \right), \tilde{z}_{(i)} \right); i = 1, \dots, 61 \right\}$.

In Fig. B1, we display Q – Q plots for the three time series of annual maxima of GSL displayed in Fig. 1. We observe that the left and the right Q – Q plots show a good fit, as the points stay close to the line. However, for the centre Q – Q plot, all points are close to the line, except for the highest empirical quantile that is largely above the corresponding theoretical quantile. As a whole, when observing all Q – Q plots (not shown) most time series show a good fit, except for a few time series (fewer than 10) which have a pattern similar to the centre Q – Q plot in Fig. B1.

Anderson–Darling test. Q – Q plot is a qualitative tool to validate the goodness of fit for probability models. For the quantitative validation of the goodness of fit of the selected models, we rely on the Anderson–Darling statistical test, which is the most powerful test for the Gumbel distribution according to the comparative study of Abidin et al. (2012).

In practice, with this test, we assess whether the transformed annual maxima $\tilde{z}_{(1)}, \dots, \tilde{z}_{(61)}$ are likely to be generated from a standard Gumbel distribution. Let $n = 61$ denote the number of samples, and F_{emp} denotes the cumulative distribution function of the empirical (F_{gum} for standard Gumbel) distribution. Then, Anderson–Darling test is based on the distance:

$$A^2 = n \int (F_{\text{emp}}(x) - F_{\text{gum}}(x))^2 w(x) dF_{\text{gum}}(x) \approx - \sum_{i=1}^n \frac{2i-1}{n} \{ \log[F_{\text{gum}}(\tilde{z}_{(i)})] + \log[1 - F_{\text{gum}}(\tilde{z}_{(n+1-i)})] \} - n, \tag{B1}$$

where $w(x)$ places more weight on the tail of the standard Gumbel distribution. For details, we refer to Abidin et al. (2012).

We apply this test on the transformed data using Saeb (2018) and found that we cannot reject the null hypothesis (samples generated from the Gumbel model) at the 5% significance level for almost all our selected models (98%), justifying their good fit. As explained in Sect. 4.4, we exclude time series whose selected models do not pass this Anderson–Darling test.

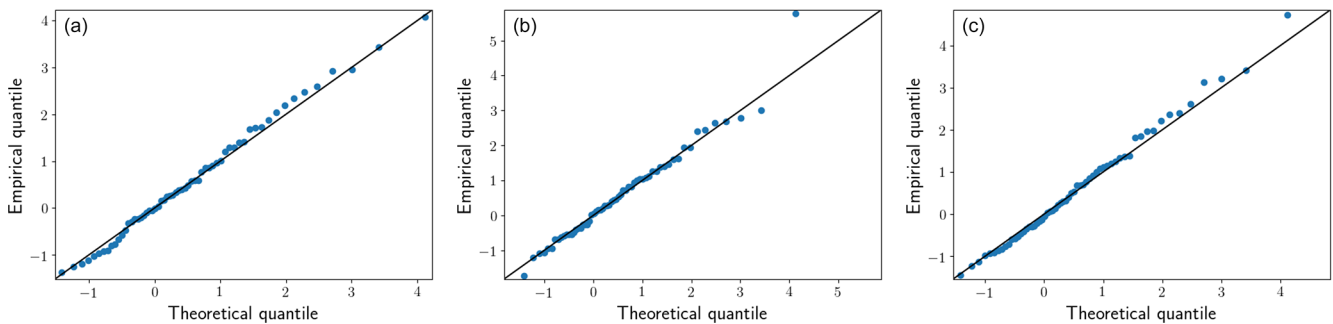


Figure B1. Q – Q plots of the selected models for the three time series displayed in Fig. 1. (a) Ubaye massif at 900 m fitted with the model \mathcal{M}_{ζ_0} . (b) Vercors massif at 1800 m fitted with the model $\mathcal{M}_{\zeta_0, \mu_1}$. (c) Beaufortain massif at 2700 m fitted with the model \mathcal{M}_{ζ_0} .

Data availability. The dataset can be downloaded from the AERIS website: <https://doi.org/10.25326/37> (Vernay et al., 2019).

Author contributions. ELR performed the analysis and drafted the first version of the manuscript. All authors discussed the results and edited the manuscript.

Competing interests. The authors declare that they have no conflict of interest.

Special issue statement. This article is part of the special issue “Advances in extreme value analysis and application to natural hazards”. It is a result of the Advances in Extreme Value Analysis and application to Natural Hazard (EVAN), Paris, France, 17–19 September 2019.

Acknowledgements. The S2M data are provided by Météo-France – CNRS, CNRM Centre d’Etudes de la Neige, through AERIS. We are grateful to Eric Gilleland for his “extRemes” R package. Finally, we are indebted to Jacques Biétry for providing us the report on French standards with respect to ground snow load and for his explanations on their methodology.

Financial support. Erwan Le Roux holds a PhD grant from INRAE.

Review statement. This paper was edited by Ivan Haigh and reviewed by two anonymous referees.

References

- Abidin, N. Z., Adam, M. B., and Midi, H.: The Goodness-of-fit Test for Gumbel Distribution: A Comparative Study, *Matematika*, 28, 35–48, 2012.
- Akaike, H.: A New Look at the Statistical Model Identification, *IEEE T. Automat. Contr.*, 215–222, https://doi.org/10.1007/978-1-4612-1694-0_16, 1974.
- BBC News: Arrests over Poland roof collapse, available at: <http://news.bbc.co.uk/2/hi/europe/5119424.stm> (last access: 2 November 2020), 2006.
- Beniston, M., Farinotti, D., Stoffel, M., Andreassen, L. M., Coppola, E., Eckert, N., Fantini, A., Giacona, F., Hauck, C., Huss, M., Huwald, H., Lehning, M., López-Moreno, J.-I., Magnusson, J., Marty, C., Morán-Tejeda, E., Morin, S., Naaim, M., Provenzale, A., Rabatel, A., Six, D., Stötter, J., Strasser, U., Terzago, S., and Vincent, C.: The European mountain cryosphere: a review of its current state, trends, and future challenges, *The Cryosphere*, 12, 759–794, <https://doi.org/10.5194/tc-12-759-2018>, 2018.
- Biétry, J.: Charges de neige au sol en France : proposition de carte révisée, Tech. Rep. 0, groupe de travail « Neige » de la commission de normalisation BNTEC P06A, 2005.
- Blanchet, J. and Lehning, M.: Mapping snow depth return levels: smooth spatial modeling versus station interpolation, *Hydrol. Earth Syst. Sci.*, 14, 2527–2544, <https://doi.org/10.5194/hess-14-2527-2010>, 2010.
- Blanchet, J., Marty, C., and Lehning, M.: Extreme value statistics of snowfall in the Swiss Alpine region, *Water Resour. Res.*, 45, W05424, <https://doi.org/10.1029/2009WR007916>, 2009.
- Bocchiola, D. and Diolaiuti, G.: Evidence of climate change within the Adamello Glacier of Italy, *Theor. Appl. Climatol.*, 100, 351–369, <https://doi.org/10.1007/s00704-009-0186-x>, 2010.
- Cheng, L., AghaKouchak, A., Gilleland, E., and Katz, R. W.: Non-stationary extreme value analysis in a changing climate, *Climatic Change*, 127, 353–369, <https://doi.org/10.1007/s10584-014-1254-5>, 2014.
- Coles, S. G.: An introduction to Statistical Modeling of Extreme Values, Springer Series in Statistics, London, Springer, <https://doi.org/10.1007/978-1-4471-3675-0>, 2001.
- Cooley, D.: Return Periods and Return Levels Under Climate Change, in: *Extremes in a Changing Climate – Detection, Analysis & Uncertainty*, Springer Science & Business Media, New York, 97–114, https://doi.org/10.1007/978-94-007-4479-0_2012.
- Croce, P., Formichi, P., Landi, F., Mercogliano, P., Bucchignani, E., Dosio, A., and Dimova, S.: The snow load in Europe and the climate change, *Climate Risk Management*, 20, 138–154, <https://doi.org/10.1016/j.crm.2018.03.001>, 2018.
- Durand, Y., Laternser, M., Giraud, G., Etchevers, P., Lesaffre, B., and Mérindol, L.: Reanalysis of 44 yr of climate in the French Alps (1958–2002): Methodology, model validation, climatology, and trends for air temperature and precipitation, *J. Appl. Meteorol. Climatol.*, 48, 429–449, <https://doi.org/10.1175/2008JAMC1808.1>, 2009a.
- Durand, Y., Rald Giraud, G., Laternser, M., Etchevers, P., Mé Rindol, L., and Lesaffre, B.: Reanalysis of 47 Years of Climate in the French Alps (1958–2005): Climatology and Trends for Snow Cover, *J. Appl. Meteorol. Climatol.*, 48, 2487–2512, <https://doi.org/10.1175/2009JAMC1810.1>, 2009b.
- Faranda, D.: An attempt to explain recent changes in European snowfall extremes, *Weather Clim. Dynam.*, 1, 445–458, <https://doi.org/10.5194/wcd-1-445-2020>, 2020.
- Fisher, R. A. and Tippett, L. H. C.: Limiting forms of the frequency distribution of the largest or smallest member of a sample, *Math. Proc. Cambridge*, 24, 180–190, <https://doi.org/10.1017/S0305004100015681>, 1928.
- Fowler, H. J., Cooley, D., Sain, S. R., and Thurston, M.: Detecting change in UK extreme precipitation using results from the climateprediction.net BBC climate change experiment, *Extremes*, 13, 241–267, <https://doi.org/10.1007/s10687-010-0101-y>, 2010.
- Garavaglia, F., Gailhard, J., Paquet, E., Lang, M., Garçon, R., and Bernardara, P.: Introducing a rainfall compound distribution model based on weather patterns sub-sampling, *Hydrol. Earth Syst. Sci.*, 14, 951–964, <https://doi.org/10.5194/hess-14-951-2010>, 2010.
- Gaume, J., Chambon, G., Eckert, N., and Naaim, M.: Relative influence of mechanical and meteorological factors on avalanche release depth distributions: An application to French Alps, *Geophys. Res. Lett.*, 39, 1–5, <https://doi.org/10.1029/2012GL051917>, 2012.

- Gaume, J., Eckert, N., Chambon, G., Naaim, M., and Bel, L.: Mapping extreme snowfalls in the French Alps using max-stable processes, *Water Resour. Res.*, 49, 1079–1098, <https://doi.org/10.1002/wrcr.20083>, 2013.
- Gilleland, E. and Katz, R. W.: extRemes 2.0: An Extreme Value Analysis Package in R, *J. Stat. Softw.*, 72, 1–39, <https://doi.org/10.18637/jss.v072.i08>, 2016.
- Gnedenko, B.: Sur la distribution limite du terme maximum d'une série aléatoire, *Ann. Math.*, 44, 423–453, <https://doi.org/10.2307/1968974>, 1943.
- Gottardi, F., Obléd, C., Gailhard, J., and Paquet, E.: Statistical re-analysis of precipitation fields based on ground network data and weather patterns: Application over French mountains, *J. Hydrol.*, 432, 154–167, <https://doi.org/10.1016/j.jhydrol.2012.02.014>, 2012.
- Haberkorn, A., Helmert, J., Leppänen, L., López-Moreno, J. I., and Pirazzini, R.: European Snow Booklet, available at: <https://www.dora.lib4ri.ch/wsl/islandora/object/wsl:20198> (last access: 2 November 2020), 2019.
- Il Jeong, D. and Sushama, L.: Projected changes to extreme wind and snow environmental loads for buildings and infrastructure across Canada, *Sustain. Cities Soc.*, 36, 225–236, <https://doi.org/10.1016/J.SCS.2017.10.004>, 2018.
- IPCC: Managing the risks of extreme events and disasters to advance climate change adaptation, Cambridge University Press, New York, <https://doi.org/10.1596/978-0-8213-8845-7>, 2012.
- IPCC: IPCC Special Report on the Ocean and Cryosphere in a Changing Climate, edited by: Po'rtner, H.-O., Roberts, D. C., Masson-Delmotte, V., Zhai, P., Tignor, M., Poloczanska, E., Mintenbeck, K., Alegri'a, A., Nicolai, M., Okem, A., Petzold, J., Rama, B., and Weyer, N. M., 2019.
- Katz, R. W.: Statistical methods for nonstationary extremes, in: *Extremes in a Changing Climate – Detection, Analysis & Uncertainty*, Springer Science & Business Media, New York, 15–38, <https://doi.org/10.1007/978-94-007-4479-0>, 2012.
- Katz, R. W., Parlange, M. B., and Naveau, P.: Statistics of extremes in hydrology, *Adv. Water Resour.*, 25, 1287–1304, [https://doi.org/10.1016/S0309-1708\(02\)00056-8](https://doi.org/10.1016/S0309-1708(02)00056-8), 2002.
- Kharin, V. V. and Zwiers, F. W.: Estimating extremes in transient climate change simulations, *J. Climate*, 18, 1156–1173, <https://doi.org/10.1175/JCLI3320.1>, 2004.
- Kim, H., Kim, S., Shin, H., and Heo, J. H.: Appropriate model selection methods for nonstationary generalized extreme value models, *J. Hydrol.*, 547, 557–574, <https://doi.org/10.1016/j.jhydrol.2017.02.005>, 2017.
- Klein Tank, A. M. G. and Können, G. P.: Trends in Indices of Daily Temperature and Precipitation Extremes in Europe, 1946–99, *J. Climate*, 16, 3665–3680, 2003.
- Krinner, G., Derksen, C., Essery, R., Flanner, M., Hagemann, S., Clark, M., Hall, A., Rott, H., Brutel-Vuilmet, C., Kim, H., Ménard, C. B., Mudryk, L., Thackeray, C., Wang, L., Arduini, G., Balsamo, G., Bartlett, P., Boike, J., Boone, A., Chéruf, F., Colin, J., Cuntz, M., Dai, Y., Decharme, B., Derry, J., Ducharme, A., Dutra, E., Fang, X., Fierz, C., Ghattas, J., Gusev, Y., Haverd, V., Kontu, A., Lafaysse, M., Law, R., Lawrence, D., Li, W., Marke, T., Marks, D., Ménégoz, M., Nasonova, O., Nitta, T., Niwano, M., Pomeroy, J., Raleigh, M. S., Schaedler, G., Semenov, V., Smirnova, T. G., Stacke, T., Strasser, U., Svenson, S., Turkov, D., Wang, T., Wever, N., Yuan, H., Zhou, W., and Zhu, D.:
 ESM-SnowMIP: assessing snow models and quantifying snow-related climate feedbacks, *Geosci. Model Dev.*, 11, 5027–5049, <https://doi.org/10.5194/gmd-11-5027-2018>, 2018.
- Lafaysse, M., Morin, S., Coléou, C., Vernay, M., Serça, D., Besson, F., Willemet, J.-M., Giraud, G., and Durand, Y.: Toward a new chain of models for avalanche hazard forecasting in French mountain ranges, including low altitude mountains, *International Snow Science Workshop, Grenoble–Chamonix Mont-Blanc*, 162–166, 2013.
- Latenser, M. and Schneebeli, M.: Long-term snow climate trends of the Swiss Alps (1931–99), *Int. J. Climatol.*, 23, 733–750, <https://doi.org/10.1002/joc.912>, 2003.
- Lüthi, S., Ban, N., Kotlarski, S., Steger, C. R., Jonas, T., and Schär, C.: Projections of Alpine snow-cover in a high-resolution climate simulation, *Atmosphere*, 10, 1–18, <https://doi.org/10.3390/atmos10080463>, 2019.
- Martins, E. S. and Stedinger, J. R.: Generalized maximum-likelihood generalized extreme-value quantile estimators for hydrologic data, *Water Resour. Res.*, 36, 737–744, <https://doi.org/10.1029/1999WR900330>, 2000.
- Marty, C. and Blanchet, J.: Long-term changes in annual maximum snow depth and snowfall in Switzerland based on extreme value statistics, *Climatic Change*, 111, 705–721, <https://doi.org/10.1007/s10584-011-0159-9>, 2012.
- Marty, C., Tilg, A.-M., Jonas, T., Marty, C., Tilg, A.-M., and Jonas, T.: Recent Evidence of Large-Scale Receding Snow Water Equivalents in the European Alps, *J. Hydrometeorol.*, 18, 1021–1031, <https://doi.org/10.1175/JHM-D-16-0188.1>, 2017.
- Milly, P. C. D., Bentacourt, J., Falkenmark, M., Robert, M., Hirsch, R. M., Kundzewicz, Z. W., Letternmaier, D. P., and Stouffer, R. J.: Stationarity is dead: Whither water management?, *Science*, 319, 573–574, <https://doi.org/10.1126/science.1151915>, 2008.
- Montanari, A. and Koutsoyiannis, D.: Modeling and mitigating natural hazards: Stationarity is immortal!, *Water Resour. Res.*, 50, 9748–9756, <https://doi.org/10.1002/2014WR016092>, 2014.
- Naaim-Bouvet, F., Prat, M., Jacob, J., Calgaro, J. A., and Raoul, J.: *La neige : recherche et réglementation*, Presses de l'École nationale des ponts et chaussées, Paris, 2000.
- Nicolet, G., Eckert, N., Morin, S., and Blanchet, J.: Inferring Spatio-temporal Patterns in Extreme Snowfall in the French Alps Using Max-stable Processes, *Procedia Environ. Sci.*, 27, 75–82, <https://doi.org/10.1016/j.proenv.2015.07.102>, 2015.
- Nicolet, G., Eckert, N., Morin, S., and Blanchet, J.: Decreasing spatial dependence in extreme snowfall in the French Alps since 1958 under climate change, *J. Geophys. Res.*, 121, 8297–8310, <https://doi.org/10.1002/2016JD025427>, 2016.
- Nicolet, G., Eckert, N., Morin, S., and Blanchet, J.: A multi-criteria leave-two-out cross-validation procedure for max-stable process selection, *Spat. Stat.*, 22, 107–128, <https://doi.org/10.1016/j.spasta.2017.09.004>, 2017.
- Nicolet, G., Eckert, N., Morin, S., and Blanchet, J.: Assessing Climate Change Impact on the Spatial Dependence of Extreme Snow Depth Maxima in the French Alps, *Water Resour. Res.*, 54, 7820–7840, <https://doi.org/10.1029/2018WR022763>, 2018.
- O'Rourke, M. and Auren, M.: Snow loads on gable roofs, *J. Struct. Eng.*, 123, 1645–1651, [https://doi.org/10.1061/\(ASCE\)0733-9445\(1997\)123:12\(1645\)](https://doi.org/10.1061/(ASCE)0733-9445(1997)123:12(1645)), 1997.
- Quéno, L., Vionnet, V., Dombrowski-Etchevers, I., Lafaysse, M., Dumont, M., and Karbou, F.: Snowpack modelling in the Pyre-

- nees driven by kilometeric-resolution meteorological forecasts, *The Cryosphere*, 10, 1571–1589, <https://doi.org/10.5194/tc-10-1571-2016>, 2016.
- Rajczak, J. and Schär, C.: Projections of Future Precipitation Extremes Over Europe: A Multimodel Assessment of Climate Simulations, *J. Geophys. Res.-Atmos.*, 122, 773–10, <https://doi.org/10.1002/2017JD027176>, 2017.
- Revuelto, J., Lecourt, G., Lafaysse, M., Zin, I., Charrois, L., Vionnet, V., Dumont, M., Rabatel, A., Six, D., Condom, T., Morin, S., Viani, A., and Sirguey, P.: Multi-criteria evaluation of snowpack simulations in complex alpine terrain using satellite and in situ observations, *Remote Sensing*, 10, 1–32, <https://doi.org/10.3390/rs10081171>, 2018.
- Rootzén, H. and Katz, R. W.: Design Life Level: Quantifying risk in a changing climate, *Water Resour. Res.*, 49, 5964–5972, <https://doi.org/10.1002/wrcr.20425>, 2013.
- Rózsás, A., Sýkora, M., and Vigh, L. G.: Long-Term Trends in Annual Ground Snow Maxima for the Carpathian Region, *Appl. Mech. Mater.*, 821, 753–760, <https://doi.org/10.4028/www.scientific.net/amm.821.753>, 2016.
- Saeb, A.: gnFit R package, available at: <https://www.rdocumentation.org/packages/gnFit> (last access: 2 November 2020), 2018.
- Sanpaolesi, L., Currie, D., Sims, P., Sacre, C., Stiefel, U., Lozza, S., Eiselt, B., Peckham, R., Solomos, G., Holand, I., Sandvik, R., Granzer, M., König, G., Sukhov, D., Del Corso, R., and Formichi, P.: Scientific support activity in the field of structural stability of civil engineering works: snow loads, Final Report Phase I, Brussels: Commission of the European Communities, DGIII-D3, available at: <http://www2.ing.unipi.it/dic/snowloads/FinalReportI.pdf> (last access: 2 November 2020), 1998.
- Schellander, H. and Hell, T.: Modeling snow depth extremes in Austria, *Nat. Hazards*, 94, 1367–1389, <https://doi.org/10.1007/s11069-018-3481-y>, 2018.
- Schöner, W., Koch, R., Matulla, C., Marty, C., and Tilg, A. M.: Spatiotemporal patterns of snow depth within the Swiss-Austrian Alps for the past half century (1961 to 2012) and linkages to climate change, *Int. J. Climatol.*, 39, 1589–1603, <https://doi.org/10.1002/joc.5902>, 2019.
- Serinaldi, F.: Dismissing return periods!, *Stoch. Env. Res. Risk A.*, 29, 1179–1189, <https://doi.org/10.1007/s00477-014-0916-1>, 2015.
- Serinaldi, F. and Kilsby, C. G.: Stationarity is undead: Uncertainty dominates the distribution of extremes, *Adv. Water Resour.*, 77, 17–36, <https://doi.org/10.1016/J.ADVWATRES.2014.12.013>, 2015.
- Soci, C., Bazile, E., Besson, F. O., and Landelius, T.: High-resolution precipitation re-analysis system for climatological purposes, *Tellus A*, 68, 29879, <https://doi.org/10.3402/tellusa.v68.29879>, 2016.
- Strasser, U.: Snow loads in a changing climate: new risks?, *Nat. Hazards Earth Syst. Sci.*, 8, 1–8, <https://doi.org/10.5194/nhess-8-1-2008>, 2008.
- Terzago, S., Fratianni, S., and Cremonini, R.: Winter precipitation in Western Italian Alps (1926–2010), *Meteorol. Atmos. Phys.*, 119, 125–136, <https://doi.org/10.1007/s00703-012-0231-7>, 2013.
- Tramblay, Y. and Somot, S.: Future evolution of extreme precipitation in the Mediterranean, *Climatic Change*, 151, 289–302, <https://doi.org/10.1007/s10584-018-2300-5>, 2018.
- Vernay, M., Lafaysse, M., Hagenmuller, P., Nheili, R., Verfaillie, D., and Morin, S.: The S2M meteorological and snow cover reanalysis in the French mountainous areas (1958–present), Data set, AERIS, <https://doi.org/10.25326/37>, 2019.
- Vidal, J. P., Martin, E., Franchistéguy, L., Baillon, M., and Soubeyrou, J. M.: A 50-year high-resolution atmospheric reanalysis over France with the Safran system, *Int. J. Climatol.*, 30, 1627–1644, <https://doi.org/10.1002/joc.2003>, 2010.
- Vigneau, J.-P.: 1986 dans les Pyrénées orientales : deux perturbations méditerranéennes aux effets remarquables, *Revue géographique des Pyrénées et du Sud-Ouest, Persée*, 58, 23–54, <https://doi.org/10.3406/rgpso.1987.4969>, 1987.
- Vionnet, V., Brun, E., Morin, S., Boone, A., Faroux, S., Le Moigne, P., Martin, E., and Willemet, J.-M.: The detailed snowpack scheme Crocus and its implementation in SURFEX v7.2, *Geosci. Model Dev.*, 5, 773–791, <https://doi.org/10.5194/gmd-5-773-2012>, 2012.
- Vionnet, V., Dombrowski-Etchevers, I., Lafaysse, M., Quéno, L., Seity, Y., and Bazile, E.: Numerical weather forecasts at kilometer scale in the French Alps: Evaluation and application for snowpack modeling, *J. Hydrometeorol.*, 17, 2591–2614, <https://doi.org/10.1175/JHM-D-15-0241.1>, 2016.
- Vionnet, V., Six, D., Auger, L., Dumont, M., Lafaysse, M., Quéno, L., Réveillet, M., Dombrowski-Etchevers, I., Thibert, E., and Vincent, C.: Sub-kilometer Precipitation Datasets for Snowpack and Glacier Modeling in Alpine Terrain, *Front. Earth Sci.*, 7, 1–21, <https://doi.org/10.3389/feart.2019.00182>, 2019.
- Wilcox, C., Vischel, T., Panthou, G., Bodian, A., Blanchet, J., Descroix, L., Quantin, G., Cassé, C., Tanimoun, B., and Kone, S.: Trends in hydrological extremes in the Senegal and Niger Rivers, *J. Hydrol.*, 566, 531–545, <https://doi.org/10.1016/J.JHYDROL.2018.07.063>, 2018.
- Zhang, X., Zwiers, F. W., Li, G., Zhang, X., Zwiers, F. W., and Li, G.: Monte Carlo Experiments on the Detection of Trends in Extreme Values, *J. Climate*, 17, 1945–1952, [https://doi.org/10.1175/1520-0442\(2004\)017<1945:MCEOTD>2.0.CO;2](https://doi.org/10.1175/1520-0442(2004)017<1945:MCEOTD>2.0.CO;2), 2004.