



HAL
open science

Widespread diminishing anthropogenic effects on calcium in freshwaters

Gesa A Weyhenmeyer, Jens Hartmann, Dag O Hessen, Jiří Kopáček, Josef Hejzlar, Stéphan Jacquet, Stephen K Hamilton, Piet Verburg, Taylor H Leach, Martin Schmid, et al.

► **To cite this version:**

Gesa A Weyhenmeyer, Jens Hartmann, Dag O Hessen, Jiří Kopáček, Josef Hejzlar, et al.. Widespread diminishing anthropogenic effects on calcium in freshwaters. *Scientific Reports*, 2019, 9 (1), pp.1-10. 10.1038/s41598-019-46838-w . hal-02916323

HAL Id: hal-02916323

<https://hal.inrae.fr/hal-02916323>

Submitted on 17 Aug 2020

HAL is a multi-disciplinary open access archive for the deposit and dissemination of scientific research documents, whether they are published or not. The documents may come from teaching and research institutions in France or abroad, or from public or private research centers.

L'archive ouverte pluridisciplinaire **HAL**, est destinée au dépôt et à la diffusion de documents scientifiques de niveau recherche, publiés ou non, émanant des établissements d'enseignement et de recherche français ou étrangers, des laboratoires publics ou privés.



Distributed under a Creative Commons Attribution 4.0 International License

SCIENTIFIC REPORTS



OPEN

Widespread diminishing anthropogenic effects on calcium in freshwaters

Gesa A. Weyhenmeyer¹, Jens Hartmann², Dag O. Hessen³, Jiří Kopáček⁴, Josef Hejzlar⁴, Stéphan Jacquet⁵, Stephen K. Hamilton⁶, Piet Verburg⁷, Taylor H. Leach⁸, Martin Schmid⁹, Giovanna Flaim¹⁰, Tiina Nõges¹¹, Peeter Nõges¹¹, Valerie C. Wentzky¹², Michela Rogora¹³, James A. Rusak¹⁴, Sarian Kosten¹⁵, Andrew M. Paterson¹⁴, Katrin Teubner¹⁶, Scott N. Higgins¹⁷, Gregory Lawrence¹⁸, Külli Kangur¹⁹, Ilga Kokorite²⁰, Leonardo Cerasino¹⁰, Clara Funk²¹, Rebecca Harvey²², Florentina Moatar²³, Heleen A. de Wit²⁴ & Thomas Zechmeister²⁵

Calcium (Ca) is an essential element for almost all living organisms. Here, we examined global variation and controls of freshwater Ca concentrations, using 440 599 water samples from 43 184 inland water sites in 57 countries. We found that the global median Ca concentration was 4.0 mg L⁻¹ with 20.7% of the water samples showing Ca concentrations ≤ 1.5 mg L⁻¹, a threshold considered critical for the survival of many Ca-demanding organisms. Spatially, freshwater Ca concentrations were strongly and proportionally linked to carbonate alkalinity, with the highest Ca and carbonate alkalinity in waters with a pH around 8.0 and decreasing in concentrations towards lower pH. However, on a temporal scale, by analyzing decadal trends in >200 water bodies since the 1980s, we observed a frequent decoupling between carbonate alkalinity and Ca concentrations, which we attributed mainly to the influence of anthropogenic acid deposition. As acid deposition has been ameliorated, in many freshwaters

¹Department of Ecology and Genetics/Limnology, Uppsala University, Norbyvägen 18D, 752 36, Uppsala, Sweden.

²Institute for Geology, Center for Earth System Research and Sustainability (CEN), University of Hamburg, Bundesstraße 55, 20146, Hamburg, Germany. ³Department of Biosciences, Centre for Biogeochemistry in the

Anthropocene (CBA), University of Oslo, Box 1066, Blindern, 0316, Norway. ⁴Institute of Hydrobiology, Biology

Centre CAS, Na Sádkách 7, 370 05, České Budějovice, Czech Republic. ⁵INRA CARRTEL, 75 bis avenue de Corzent,

74203, Thonon-les-Bains, France. ⁶Kellogg Biological Station and Department of Integrative Biology, Michigan

State University, Hickory Corners, MI 49060 and Cary Institute of Ecosystem Studies, Millbrook, NY, 12545, USA.

⁷National Institute of Water and Atmospheric Research, Hamilton, New Zealand. ⁸Department of Biological

Sciences, Rensselaer Polytechnic Institute, Troy, NY, 12180, USA. ⁹Surface Waters – Research and Management,

Eawag: Swiss Federal Institute of Aquatic Science and Technology, Seestrasse 79, 6047, Kastanienbaum,

Switzerland. ¹⁰Department of Sustainable Agro-ecosystems and Bioresources, Research and Innovation Centre,

Fondazione Edmund Mach, Via E. Mach 1, 38010, San Michele all'Adige, Italy. ¹¹Institute of Agricultural and

Environmental Sciences, Estonian University of Life Sciences, Kreutzwaldi 5, 51014, Tartu, Estonia. ¹²Helmholtz

Centre for Environmental Research, Department of Lake Research and Department of Aquatic Ecosystem Analysis,

Magdeburg, Germany. ¹³CNR Water Research Institute, L.go Tonolli 50, I-28922, Verbania Pallanza, Italy. ¹⁴Dorset

Environmental Science Centre, Dorset, ON, P0A 1E0, Canada. ¹⁵Department of Aquatic Ecology and Environmental

Biology, Institute for Water and Wetland Research, Radboud University, 6525AJ, Nijmegen, The Netherlands.

¹⁶Department of Limnology and Biological Oceanography, University of Vienna, Althanstrasse 14, 1090, Vienna,

Austria. ¹⁷IISD Experimental Lakes Area Inc., 111 Lombard Avenue Suite 325, Winnipeg, R3B 0T5, Canada. ¹⁸U.S.

Geological Survey, New York Water Science Center, Troy, NY, 12180, USA. ¹⁹Centre for Limnology, Institute of

Agricultural and Environmental Sciences, Estonian University of Life Sciences, 51117, Rannu, Tartu County, Estonia.

²⁰Institute of Biology, University of Latvia, Miera Str.3, Salaspils, LV-2169, Latvia. ²¹U.S. Environmental Protection

Agency, Clean Air Markets Division, Washington, DC, 20460, USA. ²²Vermont Department of Environmental

Services, 1 National Life Drive, Montpelier, Vermont, USA. ²³Irstea, RiverLy, 5 Rue de la Doua -, 69625, Villeurbanne

cedex, France. ²⁴Norwegian Institute for Water Research, Gaustadalléen 23, NO-0349, Oslo, Norway. ²⁵Biological

Station Lake Neusiedl, 7142, Illmitz, Austria. Correspondence and requests for materials should be addressed to

G.A.W. (email: Gesa.Weyhenmeyer@ebc.uu.se)

carbonate alkalinity concentrations have increased or remained constant, while Ca concentrations have rapidly declined towards or even below pre-industrial conditions as a consequence of recovery from anthropogenic acidification. Thus, a paradoxical outcome of the successful remediation of acid deposition is a globally widespread freshwater Ca concentration decline towards critically low levels for many aquatic organisms.

Calcium (Ca) accounts for less than 3% of the weight of most living organisms¹. Although this proportion is small, Ca is considered an essential element for the growth and population dynamics of freshwater flora and fauna by influencing intracellular signalling, neuron activity, muscle contraction, and enzymatic processes^{2,3}. Ca is also important as a key structural component for invertebrates with a calcified exoskeleton as well as for bony structures in vertebrates and egg-shell formation in birds². Several studies suggest that Ca concentration is an important driver of community structure in freshwaters^{4,5}. An example of a distinctive community change, which has been attributed to declining Ca concentration in Canadian lakes, is the observed replacement of the Ca-demanding cladoceran *Daphnia* spp. by the Ca-poor cladoceran *Holopedium glacialis*, a process known as jellification⁶. Changes in freshwater community composition in response to changing Ca availability reflect the differential Ca requirements of freshwater biota^{7,8}.

A variety of freshwaters, particularly those in the Canadian Shield and in Fennoscandia, presently have Ca concentrations that are critically low for growth, reproduction and survival of Ca-demanding organisms such as mussels, snails, crustacean zooplankton and crayfish e.g.^{2,9–11}, and which most likely also affect a suite of other organisms, ranging from phytoplankton¹² to fish¹³ and birds¹⁴. Although measurements of Ca concentrations are available for major rivers throughout the world e.g.¹⁵ they are comparably rare for the 117 million lakes on Earth¹⁶, resulting in a knowledge gap of how widespread critically low Ca concentrations are for the reproduction and survival of a large variety of Ca-demanding organisms in freshwaters.

A major natural source of Ca to freshwaters is mineral weathering¹⁷. Soils and rocks in the catchments of water bodies can contain substantial amounts of calcium-bearing minerals like calcium carbonate (CaCO_3), which reacts with carbonic acid (H_2CO_3) from atmospheric and soil respiratory sources¹⁷. When H_2CO_3 reacts with CaCO_3 , the ions Ca^{2+} , bicarbonate (HCO_3^-) and carbonate (CO_3^{2-}) are produced, and they are transported into freshwaters, eventually reaching the oceans¹⁸. The sum of the charges of the dissolved species HCO_3^- and CO_3^{2-} is referred to as carbonate alkalinity, often expressed in charge equivalents per liter.

Bicarbonate and carbonate are species of the carbonate system, a system that regulates the pH of water and controls the cycling of CO_2 between the biosphere, lithosphere, atmosphere and oceans¹⁹. The carbonate system has been described as one of the most ancient global biogeochemical systems on Earth, being essential for all biological systems²⁰. Due to the importance of the carbonate system, substantial research efforts have been made to predict spatial and temporal variation in carbonate species^{21,22}. In this context, close interactions between the carbon and the Ca cycles in the ocean-atmosphere system have been identified²³.

Although lakes are known to play an important role in the global carbon cycle^{24,25}, interactions between Ca and carbonate species have so far not been properly accounted for in a global context. Lakes usually have a pH between 6 and 8, a pH range where the bicarbonate ion dominates relative to the carbonate ion²⁶. Conceptually, and assuming that weathering is the main source and driver, Ca and carbonate alkalinity are expected to show a positive co-variation in lakes as well as running waters (Fig. 1). Under certain conditions, however, such as with additions of strong acid anions arising from anthropogenic acidification (particularly sulfate), the carbonate buffering system (i.e. alkalinity) of soils and water bodies becomes depleted and positive ions begin to leach from soils into waters without being counterbalanced by alkalinity. The leaching of positive ions, including Ca^{2+} , from soils into waters under the influence of acidification is well described in the literature^{27,28}. Thus, one result of anthropogenic acidification is an expected excess of Ca in relation to carbonate alkalinity in freshwaters (Fig. 1).

The Ca excess induced by anthropogenic acidification is reversible when soils and freshwaters recover from acidification (Fig. 1). In response to mitigation of emissions of acid precursors to the atmosphere, many freshwaters in the Northern Hemisphere are presently in such a recovery phase²⁹, and thus they are expected to show a rapid decline in Ca concentrations until natural conditions have been re-established with a charge-equivalent proportion between Ca^{2+} and carbonate alkalinity (Fig. 1). Such a rapid Ca concentration decline has in fact been observed in a variety of freshwaters^{2,11,30}. In those studies, however, focus has been on Ca concentration declines only and not on the relationship to carbonate alkalinity concentrations. Therefore, it remains unknown for how long the process of declining Ca concentrations will continue into the future, and how many freshwaters might reach critically low Ca levels for the survival and reproduction of the most sensitive organisms. According to recent studies there is even a risk that Ca concentrations may fall below pre-industrial levels due to the historical depletion of base cation stores in the catchments of acid-sensitive regions³¹, and/or the removal of Ca via timber harvesting³². If such additional Ca depletion processes occur, critically low Ca levels might even become more widespread than predicted by the conceptual model (Fig. 1).

Since globally many regions have historically been affected by anthropogenic acidification and the recovery is still ongoing²⁹ we hypothesized that many freshwaters around the globe still show an excess of Ca over carbonate alkalinity concentrations, but that most freshwaters are returning to pre-industrial (or even below) Ca and carbonate alkalinity concentrations. To test the hypothesis, we present here a global analysis of Ca and carbonate alkalinity concentrations in freshwaters (i.e., lakes including a few large lakes and reservoirs as well as rivers and streams). Our study provides new insights into the global distribution and drivers of Ca concentrations in freshwaters, which has relevance not only for freshwater biota, but also for the global carbonate cycle.

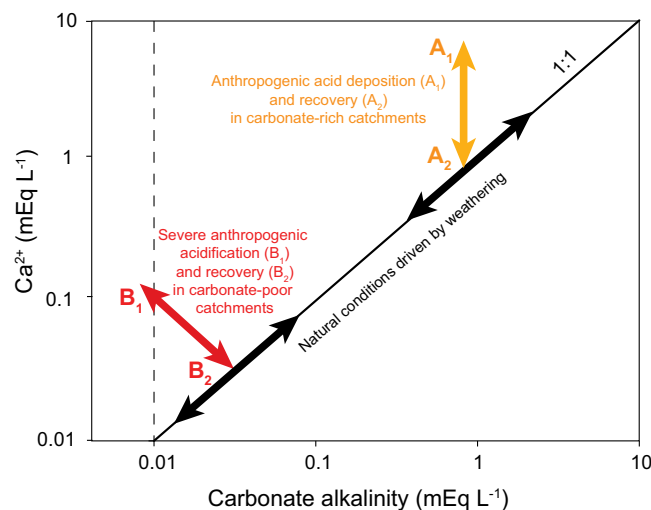


Figure 1. Conceptual figure showing the influence of anthropogenic acidification on the relationship between dissolved calcium (Ca^{2+}) and carbonate alkalinity in freshwaters. Under natural conditions, Ca^{2+} and carbonate alkalinity are expected to co-vary in a relative charge-equivalent proportion (1:1 proportion in figure), with catchment-specific concentrations reflecting the weathering potential of the catchment's bedrock and soils, and thermodynamic limits (black arrows). Under the influence of anthropogenic acidification, the carbonate buffering system of soils and water bodies can become depleted and cations such as Ca^{2+} increasingly leach from soils into freshwaters. Depending on the buffering capacity of catchment soils, acidification causes the Ca^{2+} excess in relation to carbonate alkalinity to follow the direction of arrow A_1 in case of a high buffering capacity, and the direction of arrow B_1 in case of a low buffering capacity. In both cases, the 1:1 charge-equivalent proportion is disturbed. Freshwaters can even reach negative alkalinity (left of dashed line) due to high concentrations of free hydrogen ions. When catchments and freshwaters recover from anthropogenic acidification, the above described process is reversed (arrows A_2 and B_2 , respectively).

Methods

Data and variables. We collected data on Ca concentrations, bicarbonate and carbonate concentrations (or total dissolved inorganic carbon concentrations), pH and alkalinity from 43 184 lake, reservoir, river and stream sites around the globe (Fig. 2, Supplementary Table 1), comprising a total of 440 599 water samples from 57 countries. From the 440 599 water samples, 279 940 samples were from rivers and streams and 160 659 from lakes including 37 106 samples from large lakes and reservoirs. The data were provided by members of the Global Lake Ecological Observatory Network (GLEON, <http://www.gleon.org>) and from the global river chemistry database³³ (GLORICH: <https://doi.pangaea.de/10.1594/PANGAEA.902360>). Data on Ca concentrations were available in mg L^{-1} , mEq L^{-1} or mmol L^{-1} , most of them being measured as dissolved Ca^{2+} . To make our data comparable, we transferred all data to mg L^{-1} according to <http://unitslab.com/node/43>. Whenever we refer to mg L^{-1} we use the abbreviation Ca. In some cases, consideration of charges became important. Whenever we refer to charges, we use the unit mEq L^{-1} and the abbreviation Ca^{2+} .

Altogether we had 440 599 data points on Ca concentrations, 432 283 data points on pH and 284 690 data points on carbonate alkalinity (Supplementary Table 1). Carbonate alkalinity in mEq L^{-1} was determined either as the sum of bicarbonate and carbonate ions (for data from the global river chemistry database and data from Lake Neusiedl, central Europe) or as dissolved inorganic carbon concentrations minus the amount of free CO_2 calculated from alkalinity, pH and water temperature³⁴. For comparison with Ca concentrations in mg L^{-1} the alkalinity concentrations were converted to $\text{mg HCO}_3^- \text{L}^{-1}$ according to <http://unitslab.com/node/92>. Due to large uncertainties in calculated CO_2 concentrations in highly acidic, dissolved organic carbon-rich waters³⁵ we only used positive alkalinity measurements, resulting in a lack of alkalinity data from the most acidic waters. Complete data on carbonate alkalinity, Ca and pH were available for 21 902 lakes and 16 339 running waters. Most lakes and running waters had multiple measurements from different seasons and different years. For some analyses we used long-term site-specific median values, which we calculated as the overall median of the annual medians for each lake or running water site.

For evaluation of temporal changes, we analyzed complete time series (at least four measurements per year) of Ca and pH (available from 297 freshwaters), carbonate alkalinity (available from 211 freshwaters) and sulfate concentrations (available from 213 freshwaters; here used as a proxy for the influence of anthropogenic acidification) from 1980 to 2017 (Table 1). For trend analyses, we used site-specific yearly median values.

Statistics. All statistical tests were carried out in the statistical program JMP, version 12.0 (SAS Institute Inc.). Because of non-normal distributions of our data we used non-parametric statistical methods such as the Wilcoxon test for group comparisons and Kendall's tau for correlation analyses. Boxplots are normal quantile boxplots with 25th and 75th percentiles, and an upper quartile + 1.5 * (interquartile range) and a lower quartile

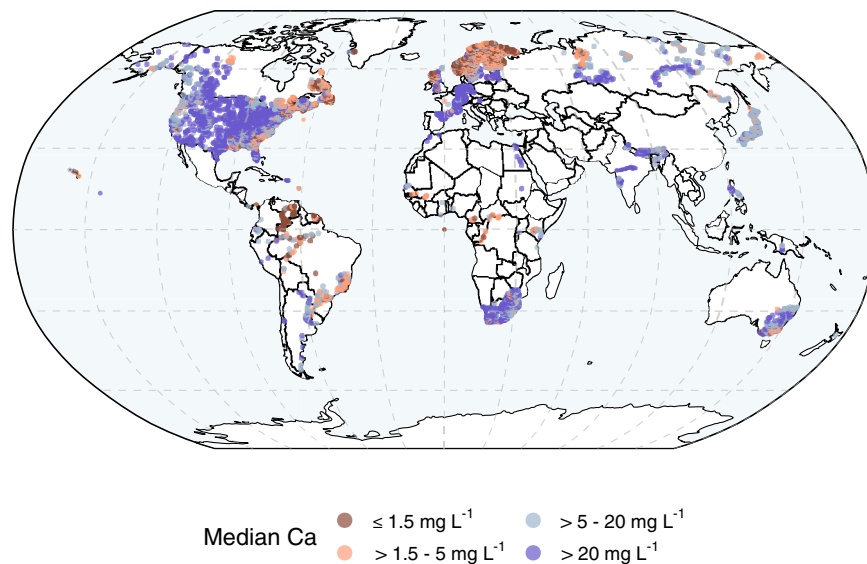


Figure 2. Global distribution of long-term median calcium (Ca) concentrations in lakes and running waters. In dark red are site-specific long-term median Ca concentrations $\leq 1.5 \text{ mg HCO}_3^- \text{ L}^{-1}$ representing an approximate threshold considered critical for the reproduction and survival of a large variety of aquatic organisms. Some available long-term median Ca concentrations could not be shown in the figure, mainly from sites located in North America and Fennoscandia, due to the lack of exact geographical locations of sampling points.

– 1.5 * (interquartile range). The significance of temporal trends was determined by applying the non-parametric Mann-Kendall trend test to yearly median values with a significance level of $P < 0.05$.

Results and Discussion

Spatial distribution of freshwater Ca concentrations. Analyzing all available Ca data, sampled during different seasons and across lakes and running waters distributed over 57 countries (altogether 440 599 measurements), we found that concentrations varied between 0.4 and 74.4 mg L^{-1} (2.5 and 97.5 percentiles, respectively) with a median of 4.0 mg L^{-1} (median of 279 940 running water samples: 3.76 mg L^{-1} and median of 160 659 lake samples: 5.50 mg L^{-1}). The lowest Ca concentrations occurred mainly in the boreal region, i.e. Fennoscandia and eastern Canada, but also in the United Kingdom, some regions in eastern North America and in some subtropical and tropical regions of South America (Fig. 2). Freshwater Ca concentrations on a global scale showed a clear right-skewed distribution with only a few freshwater samples having Ca concentrations $> 450 \text{ mg L}^{-1}$ (Fig. 3a). These high-Ca freshwater samples had a large influence on the global mean Ca concentration of 12.5 mg L^{-1} (mean of 279 940 running water samples: 11.12 mg L^{-1} and mean of 160 659 lake samples: 14.95 mg L^{-1}), making it comparable to the previously reported mean Ca concentration of the world river input to oceans of about 14 mg L^{-1} ¹⁵.

The large discrepancy between the global mean and median Ca concentrations in freshwaters reflects the uneven distribution of Ca concentrations in the world where freshwaters with Ca concentrations $\leq 4.0 \text{ mg L}^{-1}$ predominate, with 20.7% of the water samples showing Ca concentrations $\leq 1.5 \text{ mg L}^{-1}$, a threshold considered critical for the reproduction and survival of a variety of aquatic organisms⁴. Ca concentrations are often naturally low because of regional geology (e.g. gneissic or granitic bedrocks), highly weathered soils (as in much of the tropics), and/or limited weathering potential in the catchment (mainly due to a cold climate)^{36–38}. Low Ca concentrations can also be exacerbated by anthropogenic drivers, such as timber harvesting e.g.^{32,39} and recovery from historical acidification e.g.^{2,27}. In our global dataset we found critically low Ca concentrations $\leq 1.5 \text{ mg L}^{-1}$ in nutrient-poor, acidic boreal waters with a $\text{pH} \leq 5.5$ (Fig. 3a and Supplementary Information). These waters were mainly located in regions that commonly have a limited weathering potential in the catchment due to seasonal ice cover and generally rather low annual mean air temperatures³⁷ (Fig. 2). In addition, these waters have historically been exposed to anthropogenic acid deposition, and their catchments have been depleted in base cations^{40,41}. Some low concentrations of Ca were also observed in lowland tropical and subtropical regions (Fig. 2), where soils tend to be much older compared to other geographical regions and therefore often are depleted of readily weatherable carbonate minerals^{11,13}.

Comparison of Ca concentrations between lakes and running waters. On a global scale, we observed that Ca concentrations in lakes and running waters gradually increased along a pH gradient, up to a pH of around 8.0 (Fig. 3a). The Ca increase along the pH gradient was similar between lakes and running waters (Fig. 3a and Supplementary Table 2). However, despite similarities between lentic and lotic waters, we found significantly higher Ca concentrations in our running waters than lakes along the entire pH gradient (non-parametric Wilcoxon test for 42 different pH categories within the range 4.5–8.6: $p < 0.05$ for 40 out of 42 pH categories; Supplementary Table 2). Lower Ca concentrations in lakes than in running waters might simply

Country	Site	Long-term median pH	Length of available time series	Number of sites with significant Ca trends	% of significantly decreasing Ca trends	Number of sites confirming positive Ca~Alk	Number of sites showing positive Ca~SO ₄
Countries/regions with waters that showed significantly declining Ca concentration trends							
Czech Republic	4 inland waters	6.9–7.4	1980/1983–2017	4 out of 4 waters (all–)	100	0 out of 4 waters	4 out of 4 waters
Germany	Rappbode Reservoir	7.5	1980–2016	1 out of 1 (all–)	100	n.a.	1 out of 1
Switzerland	Lake Zurich	8.4	1987–2017	1 out of 1 (all–)	100	1 out of 1	0 out of 1
Netherlands	5 inland waters	4.3–7.7	1980/1991–2016/2017	3 out of 5 (all–)	60	0 out of 5 waters	n.a.
Sweden	66 inland waters	6.3–7.9	1980–2017	39 out of 66 (34–, 5+)	52	40 out of 66	42 out of 66
Norway	77 inland waters	4.6–6.6	1986–2016	50 out of 77 (33–, 17+)	43	13 out of 77	39 out of 77
US Adirondacks	44 lakes	4.3–6.9	1992/1993–2016/2017	42 out of 44 (all–)	96	8 out of 44	43 out of 44
US East Coast	59 inland waters	4.4–6.9	1980/1994–2016	31 out of 59 (38–, 3+)	48	5 out of 52 waters (n.a. for 7 sites)	32 out of 59 waters
Eastern Canada	8 Dorset lakes, 1 ELA lake	5.6–7.0	1980–2015	8 out of 9 lakes (all–)	89	5 out of 8 lakes (n.a. for ELA)	7 out of 8 lakes (n.a. for ELA)
Countries/regions with waters that showed no or significantly increasing Ca concentration trends							
Estonia/Russia	Lake Peipsi	8.3	1996–2017	2 out of 5 sites (all+)	0	3 out of 5 sites	0 out of 5 sites
Estonia	Lake Võrtsjärv	8.3	1989–2017	0 out of 1	0	1 out of 1	0 out of 1
Latvia	14 inland waters	3.9/7.8–8.1	1980–2017	1 out of 14 waters (all+)	0	10 out of 14 waters	8 out of 14 waters
Austria/Hungary	Lake Neusiedl	8.8	1987–2017	0 out of 4 sites	0	0 out of 4 sites	0 out of 4 sites
France/Switzerland	Lake Geneva	8.4	1980–2016	0 out of 1	0	1 out of 1	0 out of 1
France	Upper River Loire	7.5	1980–2015	2 out of 2 sites (all+)	0	2 out of 2 sites	0 out of 2 sites
Italy	Lake Mergozzo, Lake Paione Superiore	6.0–7.0	1984–2016	0 out of 2 lakes	0	1 out of 2 lakes	1 out of 2 lakes
Italy	Lake Caldognazzo	8.3	1980–2014	1 out of 1 (all+)	0	1 out of 1	n.a.
US	Gull Lake, Michigan	8.2	1996–2017	0 out of 1	0	1 out of 1	0 out of 1

Table 1. Results of Mann-Kendall trend tests of calcium (Ca) concentrations from 296 freshwaters since 1980 and number of significant relationships ($p < 0.05$) between Ca and carbonate alkalinity (Ca~Alk) and between Ca and sulfate (SO₄²⁻) concentrations (Ca~SO₄) on a temporal scale, using yearly median values. The abbreviation n.a. reflects non-available data.

reflect that the majority of the lake sites considered in this study were located in relatively cold geographical regions with a limited weathering potential, while our running water sites were more equally distributed across latitudes. There are, however, other reasons why Ca concentrations in lakes can be lower than in running waters. In the more precipitation-fed lakes, Ca originating from the catchments and entering via groundwater and stream inputs is often significantly diluted by the direct capture of precipitation onto the lake surface. Lakes also have a substantial internal loss of Ca caused by various biotic and abiotic processes, such as phyto- and zooplankton uptake and subsequent sedimentation⁴² and CaCO₃ precipitation and sedimentation in alkaline lakes e.g.^{43,44}. CaCO₃ supersaturation and precipitation commonly occur at pH > 8.0, which likely explains why we found no further Ca concentration increases above this pH (Fig. 3a).

Ca concentrations and carbonate alkalinity. Ca and carbonate alkalinity concentrations showed a similar pattern along the pH gradient, with maximum concentrations in the range of pH 8.0–9.0 (Fig. 3b). The observed pattern along the pH gradient followed the theoretical dissolved inorganic carbon speciation in natural waters⁴⁵. Taking the long-term surface-water median value for each site, we found that Ca and carbonate alkalinity strongly co-varied (Kendall's tau: $p < 0.0001$), approximately following a 1:1 relation (Fig. 3d). Thus, we found that Ca and carbonate alkalinity are generally in balance, suggesting that their concentrations are controlled by similar drivers, particularly carbonate mineral weathering, which supports our conceptual model (Fig. 1). At high pH, i.e. in hardwater lakes, we suggest that Ca and carbonate alkalinity remain in balance due to CaCO₃ precipitation as a sink.

Despite the overall Ca and carbonate alkalinity co-variation across the range of freshwater concentrations, we observed hydrology- and pH-related deviations from this general pattern. We found that isolated, saline waters, e.g. the endorheic Lake Neusiedl in central Europe, can substantially deviate from a Ca:alkalinity ratio of 1:1. In Lake Neusiedl, where carbonate alkalinity is disproportionally high in relation to Ca (Fig. 3d), the excess alkalinity is largely balanced by sodium.

In addition to endorheic saline lakes, waters with pH < 7.0 also could show deviations from a Ca:alkalinity ratio of 1:1. In these waters we observed a Ca excess in relation to carbonate alkalinity that gradually increased with decreasing pH (Fig. 3e), suggesting that acid anions other than bicarbonate become relevant in the ion balance. One important ion associated with acidification is sulfate, which is characteristic of acid deposition from the atmosphere, but can also originate from fertilizers⁴⁶ and acid mine drainage⁴⁷, as well as natural mineral deposits (e.g., oxidation of iron sulfides). Sulfate can cause an accelerated leaching of Ca from soils into freshwaters by decreasing the soil pH and thereby triggering Ca displacement by the hydrogen ion in the soil sorption complex^{46,48,49}. Since we found the Ca excess in relation to carbonate alkalinity mainly in waters located

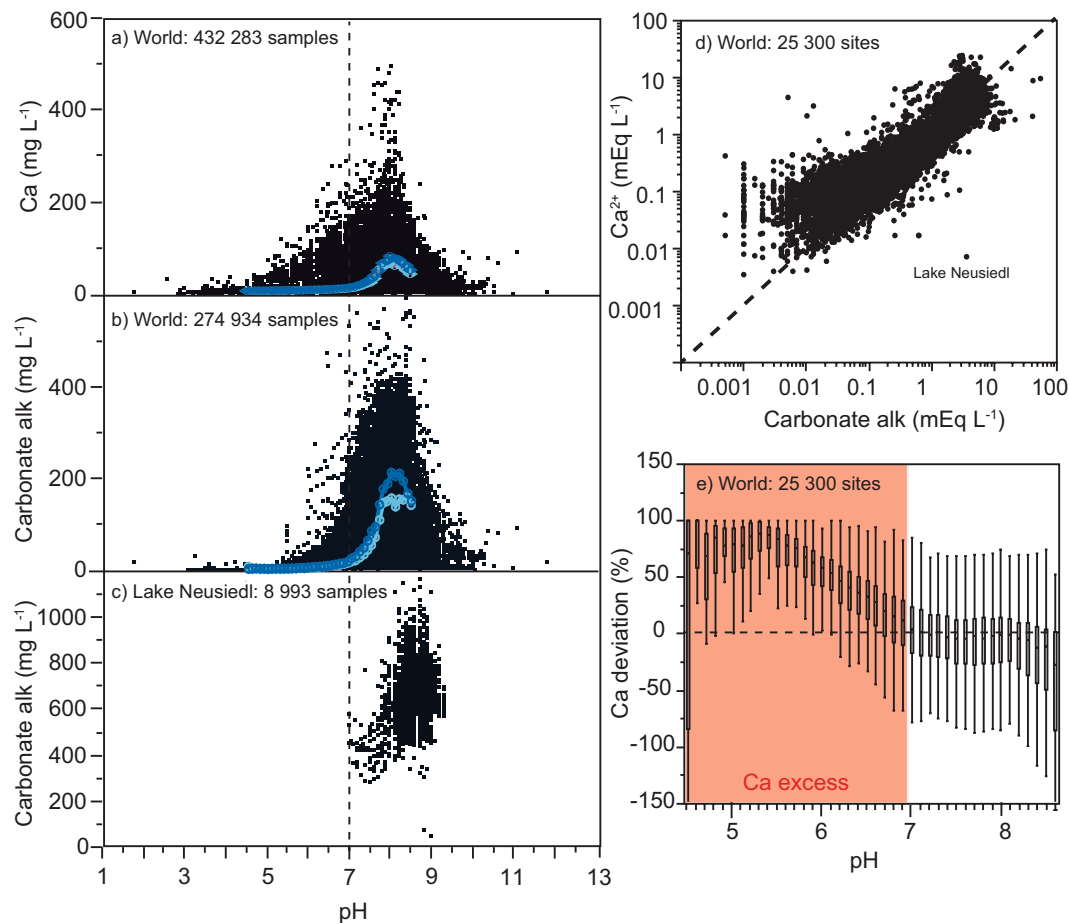


Figure 3. Calcium (Ca), pH and carbonate alkalinity of 43 184 lake and running water sites. Panel a shows all available Ca concentration data and panel b shows all available carbonate alkalinity (carbonate alk) data in relation to pH except data from Lake Neusiedl in central Europe, which is shown separately (panel c) because this lake is an endorheic basin with disproportionately high carbonate alkalinity in relation to Ca concentrations (panel d). Panels a and b show the median Ca concentration and carbonate alkalinity for each 0.1 pH unit, based on site-specific long-term median values for running waters (dark blue dots) and lakes (light blue dots). The median values as well as other percentiles are available in Supplementary Table 2. Panel d shows the relationship between Ca^{2+} and carbonate alkalinity, based on site-specific long-term median values for all freshwater sites. On a global scale, Ca^{2+} and carbonate alkalinity generally follow a 1:1 relation (dotted line). However, systematic deviations from a 1:1 relation occur, displayed as percentage for each pH unit in panel e.

in regions that historically have been exposed to acid deposition⁴⁰ (i.e. eastern North America, eastern Europe and Fennoscandia), we infer that acid deposition was the ultimate driver decoupling the relationship between Ca and carbonate alkalinity, consistent with our conceptual model (Fig. 1). Accordingly, Ca concentrations in regions that are presently recovering from acidification are expected to return towards pre-industrial conditions where Ca and carbonate alkalinity are strongly coupled and in balance, and Ca concentrations are lower than they were at the peak of catchment acidification (Fig. 1). Post-acidification recovery might even drive Ca concentrations below pre-acidification concentrations due to a depletion of base cation stores in the catchment soils of acid-sensitive regions³¹.

Ca concentration changes over time. We tested our expectation of a return to stoichiometrically balanced Ca and carbonate alkalinity in freshwaters by analyzing time series of Ca, carbonate alkalinity, pH and sulfate from 1980 to 2017. Altogether we analyzed complete time series of Ca and pH from 297 freshwaters, including carbonate alkalinity from 211 freshwaters from 1980 to 2017 (see Methods). Almost all freshwaters with available time series were located in regions that have historically been exposed to acid deposition⁴⁰, and thus all of them could potentially demonstrate declining Ca concentrations (Fig. 1). We found that out of the 297 freshwaters more than half (164 sites) showed significantly decreasing Ca concentrations since 1980 (Table 1). In waters with significantly decreasing Ca concentrations, Ca no longer showed a positive relationship to carbonate alkalinity, implying that Ca concentrations have decreased despite constant or increasing carbonate alkalinity. Instead of being coupled to the temporal change in carbonate alkalinity, Ca concentrations showed a very strong positive relationship to the temporal change in sulfate concentrations (Table 1).

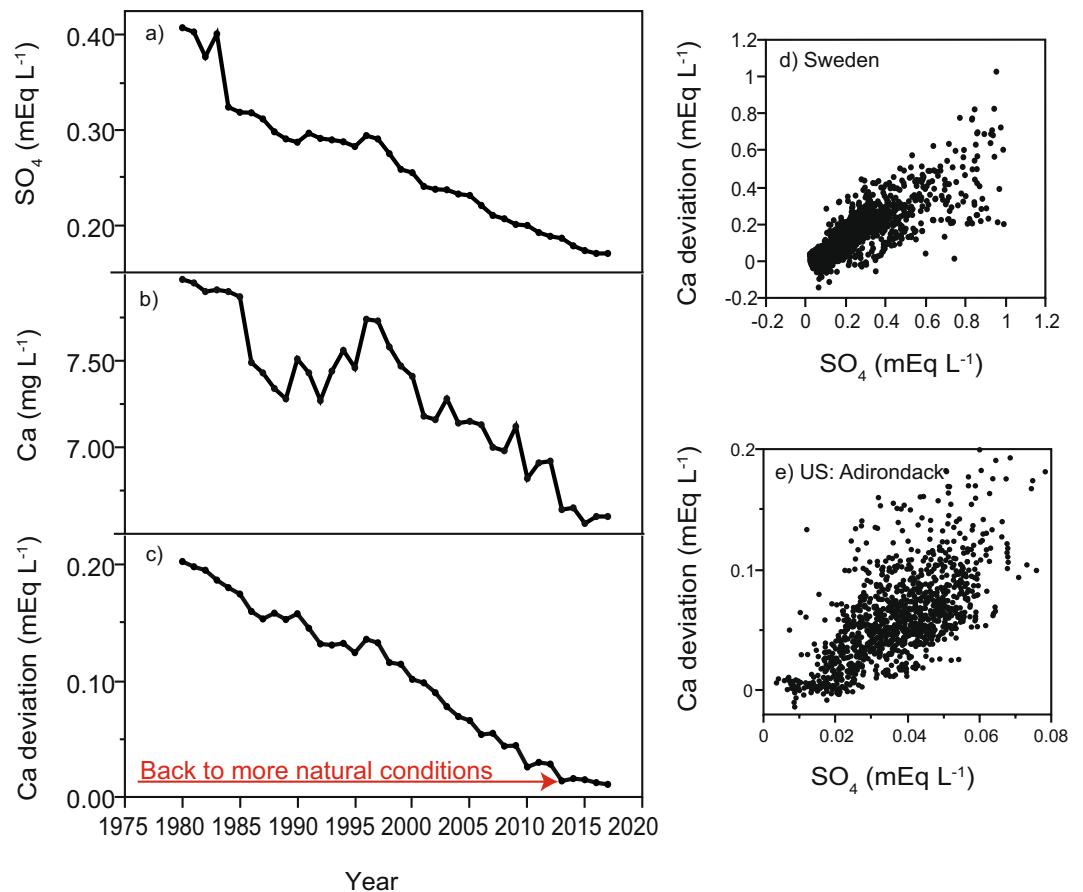


Figure 4. Temporal variation in freshwater chemistry. Shown are temporal variations in median sulfate concentration (SO_4^{2-} , panel a), calcium concentration (Ca, panel b), and Ca^{2+} deviation from the 1:1 relationship between Ca^{2+} and carbonate alkalinity (panel c) at the mouth of the Göta älv at Trollhättan, the Swedish river with the largest Ca decline from 1980 to 2017. The Ca^{2+} deviation from a 1:1 relation to carbonate alkalinity was further determined for 66 inland waters in Sweden and 44 lakes in the US Adirondacks, all located in regions that have historically been exposed to acid deposition. Panels d and e show the relationship between yearly median SO_4^{2-} concentrations and the Ca^{2+} deviation from a 1:1 relation to carbonate alkalinity during 1980 to 2017. The relationships are highly significant (Kendall's tau correlation: $p < 0.001$) for both Swedish and US freshwaters.

A coherent decline in sulfate and Ca concentrations over time was especially apparent in a river mouth in southern Sweden, which demonstrated the most significant Ca concentration decline in Sweden since 1980 (Fig. 4a,b). The coherent sulfate and Ca decreases corresponded to a return of Ca concentrations to an approximate charge balance with carbonate alkalinity (Fig. 4c). We suggest that acidification associated with anthropogenic sulfate sources is an important driver of the displacement from natural conditions where Ca and carbonate alkalinity are strongly coupled and in balance. Our suggestion is supported by region-specific patterns for freshwaters located in two geographical regions that are well known to have recovered from historical acidification—the US Adirondacks and Sweden^{30,50}. In these two regions, we observed a highly significant positive relationship between sulfate concentrations and Ca deviation from the 1:1 ratio between Ca and carbonate alkalinity, with the vast majority of data showing a Ca excess (Fig. 4d,e). Thus, our results provide evidence that acidification caused the decoupling between Ca and carbonate alkalinity across large regions of the globe via a selective sulfate-driven Ca leaching from catchment soils into freshwaters. In many regions, acid deposition has now been mitigated and the Ca-alkalinity coupling is becoming re-established.

Despite being in regions that have been exposed to acid deposition, 45% of the freshwaters in our dataset did not show a statistically significant decline in Ca concentrations over recent decades (Table 1). There are many possible reasons to explain this pattern: (a) liming and other management activities have occurred in the catchment e.g.^{51,52}, (b) the critical load of acidity for surface waters by inputs of acids from acid deposition did not exceed the natural weathering potential⁵³, (c) waters have already recovered from acidification, reaching a balance with carbonate alkalinity according to the conceptual model (Fig. 1), (d) mineral weathering rates have increased due to climate change e.g.^{54,55}, (e) there has been an increased use of Ca in CaCl_2 road salt⁵⁶ and for soil liming in agricultural areas⁴⁶, (f) there has been an increase in concentrations of dissolved organic carbon and its associated cations such as Ca, and (g) available intra-annual measurements were too infrequent and time-series too short to detect an existing trend with statistical significance.

In most of the waters in which Ca concentrations did not significantly decline, we found a strong positive relationship between Ca and carbonate alkalinity but not between Ca and sulfate concentrations (Table 1). These results suggest that although drivers for Ca concentrations in lakes and running waters might vary substantially, Ca and carbonate alkalinity generally exist in stoichiometrically balanced proportions. We found, however, that sulfate has the potential to induce strong deviations in the global co-variation between Ca and carbonate alkalinity, presumably reflecting strong mineral acidity associated with sulfate sources. Since anthropogenic sulfate is not only associated with acid precipitation but also with fertilizers and acid mine drainage, the consequences of widespread sulfate pollution need to be carefully evaluated.

Conclusion

Our global analysis of Ca and carbonate alkalinity concentrations in lakes and running waters shows that Ca and carbonate alkalinity generally strongly co-vary with highest concentrations in waters with a pH between 8.0 and 9.0, and lowest concentrations in acidic water bodies. Under the influence of anthropogenic acid deposition, however, Ca concentrations became disproportionate and unnaturally high relative to alkalinity, often accompanied by higher sulfate concentrations. As acid deposition has been increasingly mitigated in North America and Europe and freshwaters recover from anthropogenic acidification, Ca concentrations rapidly decline towards a state where they again become balanced with carbonate alkalinity. Ca concentrations may even decline below pre-acidification concentrations due to a depletion of base cations stores in the catchment soils of acid-sensitive regions, or because of other stressors including timber harvesting. Since Ca concentrations are generally low in many freshwaters, in some regions critically low, further Ca concentration declines as freshwaters fully recover from acidification will likely have widespread consequences for biota and ecosystem processes.

References

- Moran, L. A., Horton, H. R., Scrimgeour, K. G. & Perry, M. D. *Principles of Biochemistry*. (Pearson, 2012).
- Hessen, D. O., Andersen, T., Tominaga, K. & Finstad, A. G. When soft waters becomes softer; drivers of critically low levels of Ca in Norwegian lakes. *Limnology and Oceanography* **62**, 289–298, <https://doi.org/10.1002/lno.10394> (2017).
- Sterner, R. W. & Elser, J. J. *Ecological stoichiometry: The biology of elements from molecules to the biosphere*. (Princeton University Press, 2002).
- Jeziorski, A. *et al.* The widespread threat of calcium decline in fresh waters. *Science* **322**, 1374–1377, <https://doi.org/10.1126/science.1164949> (2008).
- Cairns, A. & Yan, N. A review of the influence of low ambient calcium concentrations on freshwater daphniids, gammarids, and crayfish. *Environmental Reviews* **17**, 67–79, <https://doi.org/10.1139/a09-005> (2009).
- Jeziorski, A. *et al.* The jellification of north temperate lakes. *Proceedings of the Royal Society B-Biological Sciences* **282**, 9, <https://doi.org/10.1098/rspb.2014.2449> (2015).
- Hessen, D. O., Faafeng, B. A. & Andersen, T. Replacement of herbivore zooplankton species along gradients of ecosystem productivity and fish predation pressure. *Canadian Journal of Fisheries and Aquatic Sciences* **52**, 733–742, <https://doi.org/10.1139/f95-073> (1995).
- Waervagen, S. B., Rukke, N. A. & Hessen, D. O. Calcium content of crustacean zooplankton and its potential role in species distribution. *Freshwater Biology* **47**, 1866–1878, <https://doi.org/10.1046/j.1365-2427.2002.00934.x> (2002).
- Jeziorski, A. & Smol, J. P. The ecological impacts of lakewater calcium decline on softwater boreal ecosystems. *Environmental Reviews* **25**, 245–253, <https://doi.org/10.1139/er-2016-0054> (2017).
- Azan, S. S. E. & Arnott, S. E. The impact of calcium decline on population growth rates of crustacean zooplankton in Canadian Shield lakes. *Limnology and Oceanography* **63**, 602–616, <https://doi.org/10.1002/lno.10653> (2018).
- Keller, W., Dixit, S. S. & Heneberry, J. Calcium declines in northeastern Ontario lakes. *Canadian Journal of Fisheries and Aquatic Sciences* **58**, 2011–2020, <https://doi.org/10.1139/cjfas-58-10-2011> (2001).
- Moss, B. Influence of environmental factors on distribution of freshwater algae - experimental study. 1. Introduction and influence of calcium concentration. *Journal of Ecology* **60**, 917–932, <https://doi.org/10.2307/2258575> (1972).
- Enge, E., Hesthagen, T. & Auestad, B. H. Highly dilute water chemistry during late snowmelt period affects recruitment of brown trout (*Salmo trutta*) in River Sira, southwestern Norway. *Limnologica* **62**, 97–103, <https://doi.org/10.1016/j.limno.2016.11.009> (2017).
- Pabian, S. E. & Brittingham, M. C. Soil calcium availability limits forest songbird productivity and density. *Auk* **128**, 441–447, <https://doi.org/10.1525/auk.2011.10283> (2011).
- Meybeck, M. Global occurrence of major elements in rivers. In *Surface and groundwater, weathering, and soils* Vol. 5 *Treatise on Geochemistry* (ed. Drever, J. I.) 207–223 (Elsevier, 2003).
- Verpoorter, C., Kutser, T., Seekell, D. A. & Tranvik, L. J. A global inventory of lakes based on high-resolution satellite imagery. *Geophysical Research Letters* **41**, 6396–6402, <https://doi.org/10.1002/2014gl060641> (2014).
- Meybeck, M. Global chemical-weathering of surficial rocks estimated from river dissolved loads. *American Journal of Science* **287**, 401–428, <https://doi.org/10.2475/ajs.287.5.401> (1987).
- Suchet, P. A., Probst, J. L. & Ludwig, W. Worldwide distribution of continental rock lithology: Implications for the atmospheric/soil CO₂ uptake by continental weathering and alkalinity river transport to the oceans. *Global Biogeochemical Cycles* **17**, 14, <https://doi.org/10.1029/2002gb001891> (2003).
- Bolin, B., Degens, E. T., Kempe, S. & Ketner, P. *The global carbon cycle - Scope Report 13*. (Unwin Brothers Ltd., 1979).
- Ridgwell, A. & Zeebe, R. E. The role of the global carbonate cycle in the regulation and evolution of the Earth system. *Earth and Planetary Science Letters* **234**, 299–315, <https://doi.org/10.1016/j.epsl.2005.03.006> (2005).
- Lauerwald, R., Hartmann, J., Moosdorf, N., Kempe, S. & Raymond, P. A. What controls the spatial patterns of the riverine carbonate system? - A case study for North America. *Chemical Geology* **337**, 114–127, <https://doi.org/10.1016/j.chemgeo.2012.11.011> (2013).
- Zeebe, R. E. & Wolf-Gladrow, D. A. *CO₂ in seawater: equilibrium, kinetics, isotopes*. (Gulf Professional Publishing, 2001).
- Komar, N. & Zeebe, R. E. Calcium and calcium isotope changes during carbon cycle perturbations at the end-Permian. *Paleoceanography* **31**, 115–130, <https://doi.org/10.1002/2015pa002834> (2016).
- Battin, T. J. *et al.* The boundless carbon cycle. *Nature Geoscience* **2**, 598–600, <https://doi.org/10.1038/ngeo618> (2009).
- Tranvik, L. J. *et al.* Lakes and reservoirs as regulators of carbon cycling and climate. *Limnology and Oceanography* **54**, 2298–2314 (2009).
- Kalff, J. *Limnology*. (Prentice Hall, 2002).
- Likens, G. E., Driscoll, C. T. & Buso, D. C. Long-term effects of acid rain: Response and recovery of a forest ecosystem. *Science* **272**, 244–246, <https://doi.org/10.1126/science.272.5259.244> (1996).
- Reuss, J. O. & Johnson, D. W. *Acid deposition and acidification of soils and waters*. Vol. 59 (Springer Verlag, 1986).

29. Monteith, D. T. *et al.* Dissolved organic carbon trends resulting from changes in atmospheric deposition chemistry. *Nature* **450**, 537–U539 (2007).
30. Evans, C. D. *et al.* Recovery from acidification in European surface waters. *Hydrology and Earth System Sciences* **5**, 283–297, <https://doi.org/10.5194/hess-5-283-2001> (2001).
31. Likens, G. E. & Buso, D. C. Dilution and the Elusive Baseline. *Environmental Science & Technology* **46**, 4382–4387, <https://doi.org/10.1021/es3000189> (2012).
32. Watmough, S. A., Aherne, J. & Dillon, P. J. Potential impact of forest harvesting on lake chemistry in south-central Ontario at current levels of acid deposition. *Canadian Journal of Fisheries and Aquatic Sciences* **60**, 1095–1103, <https://doi.org/10.1139/f03-093> (2003).
33. Hartmann, J., Lauerwald, R. & Moosdorf, N. A brief overview of the GLObal River CHemistry database, GLORICH. In *Geochemistry of the Earth's Surface Ges-10 Vol. 10 Procedia Earth and Planetary Science* (ed. Gaillardet, J.) 23–27 (Elsevier Science Bv, 2014).
34. Weyhenmeyer, G. A., Kortelainen, P., Sobek, S., Müller, R. & Rantakari, M. Carbon dioxide in boreal surface waters: a comparison of lakes and streams. *Ecosystems* **15**, 1295–1307, <https://doi.org/10.1007/s10021-012-9585-4> (2012).
35. Abril, G. *et al.* Technical Note: Large overestimation of pCO₂(l) calculated from pH and alkalinity in acidic, organic-rich freshwaters. *Biogeosciences* **12**, 67–78, <https://doi.org/10.5194/bg-12-67-2015> (2015).
36. Leys, B. A. *et al.* Natural and anthropogenic drivers of calcium depletion in a northern forest during the last millennium. *Proceedings of the National Academy of Sciences of the United States of America* **113**, 6934–6938, <https://doi.org/10.1073/pnas.1604909113> (2016).
37. Lerman, A., Wu, L. L. & Mackenzie, F. T. CO₂ and H₂SO₄ consumption in weathering and material transport to the ocean, and their role in the global carbon balance. *Marine Chemistry* **106**, 326–350, <https://doi.org/10.1016/j.marchem.2006.04.004> (2007).
38. Hartmann, J., Moosdorf, N., Lauerwald, R., Hinderer, M. & West, A. J. Global chemical weathering and associated P-release - The role of lithology, temperature and soil properties. *Chemical Geology* **363**, 145–163, <https://doi.org/10.1016/j.chemgeo.2013.10.025> (2014).
39. Likens, G. E. *et al.* The biogeochemistry of calcium at Hubbard Brook. *Biogeochemistry* **41**, 89–173, <https://doi.org/10.1023/a:1005984620681> (1998).
40. Rodhe, H., Dentener, F. & Schulz, M. The global distribution of acidifying wet deposition. *Environmental Science & Technology* **36**, 4382–4388, <https://doi.org/10.1021/es020057g> (2002).
41. Lawrence, G. B. *et al.* Soil calcium status and the response of stream chemistry to changing acidic deposition rates. *Ecological Applications* **9**, 1059–1072, <https://doi.org/10.2307/2641351> (1999).
42. Otsuki, A. & Wetzel, R. G. Calcium and total alkalinity budgets and calcium-carbonate precipitation of a small hard-water lake. *Archiv Fur Hydrobiologie* **73**, 14–30 (1974).
43. Strong, A. E. & Eadie, B. J. Satellite-observations of calcium-carbonate precipitations in great lakes. *Limnology and Oceanography* **23**, 877–887, <https://doi.org/10.4319/lo.1978.23.5.0877> (1978).
44. Groleau, A., Sarazin, G., Vincon-Leite, B., Tassin, B. & Quiblier-Lloberas, C. Tracing calcite precipitation with specific conductance in a hard water alpine lake (Lake Bourget). *Water Research* **34**, 4151–4160, [https://doi.org/10.1016/s0043-1354\(00\)00191-3](https://doi.org/10.1016/s0043-1354(00)00191-3) (2000).
45. Stumm, W. & Morgan, J. J. *Aquatic Chemistry: Chemical equilibria and rates in natural waters.*, (Wiley Interscience, 1996).
46. Kopacek, J., Hejzlar, J., Porcal, P. & Posch, M. Sulphate leaching from diffuse agricultural and forest sources in a large central European catchment during 1900–2010. *Science of the Total Environment* **470**, 543–550, <https://doi.org/10.1016/j.scitotenv.2013.10.013> (2014).
47. Raymond, P. A. & Oh, N. H. Long term changes of chemical weathering products in rivers heavily impacted from acid mine drainage: Insights on the impact of coal mining on regional and global carbon and sulfur budgets. *Earth and Planetary Science Letters* **284**, 50–56, <https://doi.org/10.1016/j.epsl.2009.04.006> (2009).
48. Neary, B. P. & Dillon, P. J. Effects of sulfur deposition on lake-water chemistry in Ontario, Canada. *Nature* **333**, 340–343, <https://doi.org/10.1038/333340a0> (1988).
49. Likens, G. E., Wright, R. F., Galloway, J. N. & Butler, T. J. Acid rain. *Scientific American* **241**, 43–51, <https://doi.org/10.1038/scientificamerican1079-43> (1979).
50. Waller, K., Driscoll, C., Lynch, J., Newcomb, D. & Roy, K. Long-term recovery of lakes in the Adirondack region of New York to decreases in acidic deposition. *Atmospheric Environment* **46**, 56–64, <https://doi.org/10.1016/j.atmosenv.2011.10.031> (2012).
51. Yao, H. X. *et al.* Nearshore human interventions reverse patterns of decline in lake calcium budgets in central Ontario as demonstrated by mass-balance analyses. *Water Resources Research* **47**, 13, <https://doi.org/10.1029/2010wr010159> (2011).
52. Driscoll, C. T. *et al.* The experimental watershed liming study: Comparison of lake and watershed neutralization strategies. *Biogeochemistry* **32**, 143–174, <https://doi.org/10.1007/bf02187137> (1996).
53. Palmer, S. M., Driscoll, C. T. & Johnson, C. E. Long-term trends in soil solution and stream water chemistry at the Hubbard Brook Experimental Forest: relationship with landscape position. *Biogeochemistry* **68**, 51–70, <https://doi.org/10.1023/B:BiOG.0000025741.88474.0d> (2004).
54. Kopacek, J. *et al.* Climate change increasing calcium and magnesium leaching from granitic alpine catchments. *Environmental Science & Technology* **51**, 159–166, <https://doi.org/10.1021/acs.est.6b03575> (2017).
55. Rogora, M. *et al.* Thirty years of chemical changes in alpine acid-sensitive lakes in the Alps. *Water Air and Soil Pollution* **224**, 20, <https://doi.org/10.1007/s11270-013-1746-3> (2013).
56. Dugan, H. A. *et al.* Salting our freshwater lakes. *Proceedings of the National Academy of Sciences of the United States of America* **114**, 4453–4458, <https://doi.org/10.1073/pnas.1620211114> (2017).

Acknowledgements

Financial support was received from the Swedish Research Council (Grant No. 2016-04153), the European Union's Horizon 2020 research and innovation program under the Marie Skłodowska-Curie grant agreement No. 643052 (C-CASCADES project), and from the Knut and Alice Wallenberg Foundation (KAW project). This work is part of the international Global Lake Ecological Observatory Network (GLEON). The work of J.H. is supported by the Deutsche Forschungsgemeinschaft (DFG) under Germany's Excellence Strategy – EXC 20 2037 'Climate, Climatic Change, and Society' – Project Number: 390683824, contribution to the Center for Earth System Research and Sustainability (CEN) of Universität Hamburg. Any use of trade, firm, or product names is for descriptive purposes only and does not imply endorsement by the U.S. Government. We thank all data providers, listed in Supplementary Table 1.

Author Contributions

G.A.W. designed the study, analyzed the data and wrote the paper. G.A.W., J.H., D.O.H., J.K., J.H., S.J., S.K.H., P.V., T.H.L., M.S., G.F., T.N., P.N., V.C.W., M.R., J.A.R., S.K., A.M.P., K.T., S.N.H., G.L., K.K., I.K., L.C., C.F., R.H., F.M., H.A.W., T.Z. all contributed with data, including performing data quality checks, and they all made substantial contributions to the methods, results, discussion and conclusions of the paper.

Additional Information

Supplementary information accompanies this paper at <https://doi.org/10.1038/s41598-019-46838-w>.

Competing Interests: The authors declare no competing interests.

Publisher's note: Springer Nature remains neutral with regard to jurisdictional claims in published maps and institutional affiliations.



Open Access This article is licensed under a Creative Commons Attribution 4.0 International License, which permits use, sharing, adaptation, distribution and reproduction in any medium or format, as long as you give appropriate credit to the original author(s) and the source, provide a link to the Creative Commons license, and indicate if changes were made. The images or other third party material in this article are included in the article's Creative Commons license, unless indicated otherwise in a credit line to the material. If material is not included in the article's Creative Commons license and your intended use is not permitted by statutory regulation or exceeds the permitted use, you will need to obtain permission directly from the copyright holder. To view a copy of this license, visit <http://creativecommons.org/licenses/by/4.0/>.

© The Author(s) 2019