

Alternative reproductive tactics increase effective population size and decrease inbreeding in wild Atlantic salmon

Charles Perrier, Eric Normandeau, Melanie Dionne, Antoine Richard, Louis Bernatchez

► **To cite this version:**

Charles Perrier, Eric Normandeau, Melanie Dionne, Antoine Richard, Louis Bernatchez. Alternative reproductive tactics increase effective population size and decrease inbreeding in wild Atlantic salmon. *Evolutionary Applications*, Blackwell, 2014, 7 (9), pp.1094-1106. 10.1111/eva.12172 . hal-02921373

HAL Id: hal-02921373

<https://hal.inrae.fr/hal-02921373>

Submitted on 4 Jun 2021

HAL is a multi-disciplinary open access archive for the deposit and dissemination of scientific research documents, whether they are published or not. The documents may come from teaching and research institutions in France or abroad, or from public or private research centers.

L'archive ouverte pluridisciplinaire **HAL**, est destinée au dépôt et à la diffusion de documents scientifiques de niveau recherche, publiés ou non, émanant des établissements d'enseignement et de recherche français ou étrangers, des laboratoires publics ou privés.



ORIGINAL ARTICLE

Alternative reproductive tactics increase effective population size and decrease inbreeding in wild Atlantic salmon

Charles Perrier,¹ Éric Normandeau,¹ Mélanie Dionne,² Antoine Richard¹ and Louis Bernatchez¹¹ Département de Biologie, Institut de Biologie Intégrative et des Systèmes (IBIS), Université Laval, Québec, Canada² Direction de la faune aquatique, Ministère du Développement durable, de l'Environnement, de la Faune et des Parcs du Québec, Québec, Canada**Keywords**

effective number of breeders, Effective population size, genetic diversity, kinship, parentage analysis, relatedness, reproductive success, reproductive tactic.

Correspondence

Charles Perrier, Département de Biologie, Institut de Biologie Intégrative et des Systèmes (IBIS), Université Laval, Québec, G1V 0A6 Canada

Tel.: +1 418 656 2131 extn. 8455;

fax: +1 418 656 7176;

e-mail: charles.perrier.1@ulaval.ca

Received: 11 February 2014

Accepted: 6 May 2014

doi:10.1111/eva.12172

Abstract

While nonanadromous males (stream-resident and/or mature male parr) contribute to reproduction in anadromous salmonids, little is known about their impacts on key population genetic parameters. Here, we evaluated the contribution of Atlantic salmon mature male parr to the effective number of breeders (N_b) using both demographic (variance in reproductive success) and genetic (linkage disequilibrium) methods, the number of alleles, and the relatedness among breeders. We used a recently published pedigree reconstruction of a wild anadromous Atlantic salmon population in which 2548 fry born in 2010 were assigned parentage to 144 anadromous female and 101 anadromous females that returned to the river to spawn in 2009 and to 462 mature male parr. Demographic and genetic methods revealed that mature male parr increased population N_b by 1.79 and 1.85 times, respectively. Moreover, mature male parr boosted the number of alleles found among progenies. Finally, mature male parr were in average less related to anadromous females than were anadromous males, likely because of asynchronous sexual maturation between mature male parr and anadromous fish of a given cohort. By increasing N_b and allelic richness, and by decreasing inbreeding, the reproductive contribution of mature male parr has important evolutionary and conservation implications for declining Atlantic salmon populations.

Introduction

The effective population size, N_e , is a central genetic parameter that determines the extent of inbreeding, genetic drift, and genetic diversity occurring within populations. As such, N_e also influences a population's evolutionary potential because it determines the efficiency of natural selection (Wright 1938; Charlesworth 2009). Inbreeding, the breeding between closely related individuals, is a major process influencing the fitness of populations due to the potential occurrence of inbreeding depression (Charlesworth and Charlesworth 1987). Moreover, the effectiveness of purifying selection on recessive deleterious alleles accumulated due to inbreeding (Crnokrak and Barrett 2002) can be reduced in populations experiencing small N_e (Crow and Kimura 1970). Hence, N_e and inbreeding are fundamental and interconnected population genetic

parameters. Therefore, evolutionary and conservation studies of wild and captive populations increasingly consider N_e (Frankham 2005; Schwartz et al. 2007; Hare et al. 2011) and inbreeding (Hedrick and Kalinowski 2000; Frankham 2005; Edmands 2007).

Extensive variation in life-history traits, in particular in reproductive strategies, exists within populations of a species and can influence N_e , inbreeding, and ultimately the level of genetic variability that is maintained. N_e and the ratio of effective size over census size (N_e/N_c) are influenced by the sex ratio among breeders, the variance in individual reproductive success, the propensity for multiple mating, and the extent of overlapping generations (Wright 1938; Crow and Kimura 1970). For example, multiple mating can be negatively correlated to N_e if it is associated to an increase in variance in reproductive success (Ardren and Kapuscinski 2003). However, multiple mating can be

positively correlated with Ne if it does not result in an increase in the variance in reproductive success but rather in an increase in the Ne of the limiting sex (Saura et al. 2008). Besides, multiple mating may dilute inbreeding and increase individual reproductive success (Stockley et al. 1993; Tregenza and Wedell 2002; Garant et al. 2005). Similarly, the decrease in synchronicity in sexual maturity among individuals from different sexes could reduce the probability of reproduction among siblings and thus limit inbreeding (Bukowski and Avilés 2002). Also, there are some evidences that inbreeding may also be actively avoided through active kin recognition and avoidance or indirectly through dispersal (Pusey and Wolf 1996; Kokko and Ots 2006). For example, while mature zebrafish male do not show preference for the odor of related or unrelated females, mature female prefer the odor of unrelated males (Gerlach and Lysiak 2006). Overall, the influence of alternative maturation and mating tactics on Ne and on inbreeding could be particularly critical within relatively small and isolated populations that are particularly sensitive to these genetic parameters and in which active kin avoidance may be particularly costly.

Salmonid fishes display extensive variation in breeding systems, exhibiting within and among species alternative reproductive strategies (Fleming 1998; Fleming and Reynolds 2004). In anadromous Atlantic salmon (*Salmo salar*, L.) populations, while all females achieve a migration at sea before homing to their natal river to spawn, variable proportions of males forego marine migration and reach sexual maturity at a small size in freshwater. These small males maturing in freshwater are usually named mature male parr. This reproductive strategy has strong environmental determinants but is also partially heritable (Prevost et al. 1992; Aubin-Horth and Dodson 2004; Piche et al. 2008; Paez et al. 2011; Dodson et al. 2013) and might have been by maintained through negative frequency-dependent selection (Hutchings and Myers 1994; Aubin-Horth et al. 2005). Using parental assignment, several studies have shown that mature male parr may fertilize relatively large proportions of eggs in the wild, ranging typically from 30% to 60% (Martinez et al. 2000; Saura et al. 2008; Grimardias et al. 2010; Richard et al. 2013). Mature male parr have low individual reproductive success compared to anadromous males but can be much more abundant and thus increase multiple mating (Martinez et al. 2000; Garant et al. 2003; Fleming and Reynolds 2004; Richard et al. 2013). Lastly, anadromous salmon and mature male parr from a single cohort will generally reproduce in different years, mature male parr being several years younger than mature anadromous males, thus increasing the overlap among generations. Mature male parr could also constitute a large reserve of genetic diversity as a result of their abundance. Lastly, the prevalence of inbreeding, which can be a

major concern in salmonids (Wang et al. 2001; Houde et al. 2011), could be reduced by the contribution of mature male parr through the increase in Ne, the increase in multiple mating, and the increase in cohort overlap via asynchronous maturation with anadromous females.

Due to the impossibility of sampling all mature male parr in wild populations, estimating their influence on Ne and inbreeding is very difficult to do and has rarely been achieved. For the same reason, mature male parr are generally not included when estimating Nc, although they contribute to Ne. Yet, Ne has been measured by using pedigree reconstructions in either small experimental water channels (Jones and Hutchings 2002) or small wild populations (Saura et al. 2008). However, estimating the contribution of mature male parr to Ne in medium to large Atlantic salmon populations remains extremely challenging. This has only been performed by combining genetic (linkage disequilibrium) and demographic (number of anadromous breeders) estimates of Ne, to gain coarse estimates of the possible participation of mature male parr (Palstra et al. 2009; Johnstone et al. 2013). Nevertheless, pedigree reconstruction has sometimes been successfully used for relatively large populations in other species (e.g., *Oncorhynchus mykiss*, Ardren and Kapuscinski (2003), Araki et al. (2007) and *Salmo trutta*, Serbezov et al. (2012a)), demonstrating the feasibility of such a procedure. Moreover, in situations where all the potential anadromous Atlantic salmon breeders have been sampled, mature male parr presence and fertilization success can be deduced from pedigree reconstructions (Saura et al. 2008; Richard et al. 2013). Rather than Ne, which corresponds to the effective population size over a generation, the effective number of breeders for a given reproductive year, Nb, can be inferred from such pedigree reconstitution (Waples 2005; Palstra and Fraser 2012).

Here, using a recently published dataset (Richard et al. 2013), we document the contributions of mature male parr on the effective population size, genetic diversity and inbreeding in a medium size Atlantic salmon population. An exhaustive pedigree reconstruction of this North American Atlantic salmon population was achieved by assigning parentage, using 12 microsatellite markers, of 2548 fry collected in 2010 to 144 anadromous females and 101 anadromous males that returned to the river in 2009 and to 462 mature male parr for which genotypes were reconstructed using the Colony software (see Methods and Results). In this study, we first quantify the contributions of mature male parr to the effective number of breeders (Nb) using both demographic and genetic estimate of Nb, respectively, based on variance in reproductive success among breeders and on linkage disequilibrium among loci. Second, we empirically compare the sensitivity of both methods used to estimate Nb. Third, we quantify the bias in the estimate

of Nb/Nc resulting from neglecting the spawning participation of mature male parr to breeding in the study population. Finally, we assess the contribution of mature male parr to the genetic diversity in terms of allelic richness among fry and we measure the impact of mature male parr on the relatedness among breeders, and consequently, on inbreeding within the population. We discuss the evolutionary and conservation implications of the contributions of mature male parr, and more widely of alternative maturation and mating tactics, to effective population size, inbreeding, and genetic diversity in wild salmonids populations and other species exhibiting extensive variation in life history.

Methods

Study site and sample collection

This study was conducted on the Escoumins River, Québec, Canada (River mouth coordinates: +48°20' 48.20"N, -69°24'26.01"W). A dam built 1 km upstream of the river mouth, just upstream of tidal influence, and equipped with a trap allowed Richard et al. (2013) to sample all the anadromous genitors returning to the river to spawn. The average anadromous Atlantic salmon run size in this river was 312 (195–455) from 2004 to 2009. In 2009, all anadromous salmon entering the Escoumins River ($N = 268$) and passing the dam were measured and sampled (adipose fin tissue). In August 2010, 2577 fry (young of the year, 0+) were randomly sampled by electrofishing at 94 sites. More methodological details pertaining to study site and sampling can be found in the study described by Richard et al. (2013).

Genetic analyses and parentage analysis

The genetic and parentage analyses are also detailed in the study of Richard et al. (2013). Briefly, DNA was extracted from adipose fin tissue and from fry caudal fin tissue using a

salt-based method (Aljanabi and Martinez 1997). Microsatellite polymorphism was analyzed at 12 loci. All adult individuals were genotyped twice (from PCR to genotyping) to prevent genotyping errors. Potential presence of null alleles, large allele dropout, and stutter peaks were estimated using MICROCHECKER 2.2.3 (Van Oosterhout et al. 2004).

Figure 1 illustrates a typical life cycle of the Atlantic salmon population inhabiting the Escoumins River, showing the potential cohorts of anadromous and mature male parr breeders that may have contributed to the fry sampled in 2010. CERVUS and PASOS (Duchesne et al. 2005) were first used to find the most likely mother–offspring and father–offspring pairs. A total of 1247 paternities and 2395 maternities were identified. Then, the full likelihood approach implemented in COLONY (Jones and Wang 2010) was used to allocate a mother or a father to the 153 and 1301 remaining fry, respectively. Probability of identity and paternity exclusion probability combined across all loci was 5×10^{-6} for the first parent, allowing high-quality assignments (see Richard et al. 2013 for further details on assignment reliability). Although mature male parr were not sampled, COLONY was used to infer their genotypes from the pedigree analysis using a 0.60 probability that a father was present among the anadromous fish. To determine the effect of the number of offspring sampled on the potential for detection of anadromous parents and of mature male parr fathers, we subsampled from 50 to 2500 offspring by steps of 50, with each step being subsampled 1000 times. The number of parents identified should reach a plateau if enough offspring were sampled.

Based on this parental assignment analysis, Richard et al. (2013) reported that of the 268 anadromous Atlantic salmon that entered the river during the summer of 2009 (Table S1), 245 (101 males and 144 females) had at least one fry assigned to them by our parentage analysis. In addition, a total of 462 mature male parr were identified as breeders. Of the 2548 fry that were assigned parentage,

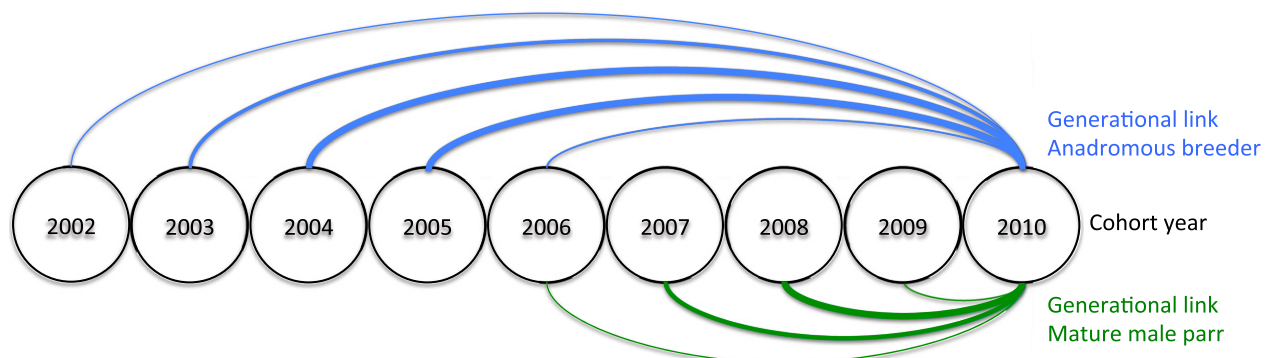


Figure 1 Schematized life cycle of the Atlantic salmon population in the Escoumins River. This life cycle illustrates the potential generational links between the fry sampled in 2010 and the anadromous or mature male parr breeders from the most probable anterior cohorts.

1115 (44%) were assigned to mature male parr and 1433 (56%) to anadromous males (Table S1). Mature male parr therefore increased the number of breeding males by 5.63 times and the total number of breeders by 2.97 times. It is noteworthy that the progeny of only six of the 144 females were assigned to only mature male parr.

Demographic estimates of the effect of mature male parr on the effective number of breeders (Nb)

Based on the parentage assignments, we estimated the mean (k) and variance (Vk) of reproductive success among parents of a same sex. Because not all the fry were sampled, we adjusted the observed index of variability ($Vk[\text{obs}]/k[\text{obs}]$) to obtain an adjusted value $Vk[\text{adj}]/k[\text{adj}]$ using the eqn (1), for each sex separately:

$$\frac{Vk[\text{adj}]}{k[\text{adj}]} = 1 + \frac{k[\text{adj}]}{k[\text{obs}]} \times \left(\frac{Vk[\text{obs}]}{k[\text{obs}]} - 1 \right) \quad (1)$$

Where $Vk[\text{adj}]$ is the adjusted variance in reproductive success (Crow and Morton 1955; Waples 2002), following the methods of Araki et al. (2007). Assuming a stable population size, $Vk[\text{adj}]$ was adjusted for $k = 2$.

We then estimated the Nb for each sex following the eqn (2).

$$Nb = \frac{k[\text{adj}] \times N - 2}{k[\text{adj}] - 1 + \frac{Vk[\text{adj}]}{k[\text{adj}]}} \quad (2)$$

The overall effective number of breeders was then estimated using eqn (3) (Crow and Kimura 1970).

$$Nb = \frac{4 \times Nb[\text{male}] \times Nb[\text{female}]}{Nb[\text{male}] + Nb[\text{female}]} \quad (3)$$

To investigate further the contribution of mature male parr individuals on Nb, we estimated Nb (referred as Demo(1)) for two different datasets corresponding to parents-fry assignments implicating (i) anadromous breeders and (ii) anadromous and mature male parr breeders.

Mature male parr and anadromous males are likely to compete for egg fertilization (Myers and Hutchings 1987). Therefore, estimates of Nb based on only anadromous males could be biased due to an underestimation of females' reproductive success since their eggs has been partly fertilized by mature male parr. We thus performed a second demographic estimate of Nb, referred as Demo(2), using the first aforementioned scenario Demo(1) but simulating the possibility that fry fathered by mature male parr could have been fathered by anadromous males. To do so, we replaced the mature male parr by anadromous males in the parentage results, proportionally to the reproductive

success of anadromous males with each female. To consider that some males may have equal reproductive success, this replacement procedure was run 1000 times *in silico*. We then estimated Nb for this new parentage file using the aforementioned equations.

Genetic estimates of the effect of mature male parr on the effective number of breeders (Nb)

We used the LDNe program (Waples and Do 2008) to estimate Nb (referred as Nb LDNe) and the contribution of anadromous males and mature male parr individuals to Nb and. We excluded alleles with frequencies below 0.01 and estimated 95% confidence intervals using the parametric test implemented in LDNe.

Effect of mature male parr on Nb/Nc

We estimated the Nb/Nc ratios by dividing Nb by either (i) the number of anadromous individuals counted at the dam or (ii) the number of breeders identified by parental assignments, including mature male parr.

Estimates of the sensitivity of Nb estimates to the number of fry sampled

To investigate the influence of the number of fry sampled on the demographic estimate of Nb, we estimated Nb (Nb Demo(1)) for the two above-mentioned datasets, subsampling from 100 to 2500 progeny by steps of 100 progeny, with 1000 subsamples for each step and without replacing individuals. To investigate the influence of the number of fry sampled on the genetic estimate of Nb (Nb LDNe), we ran the software on random subsets of 100 to 2500 fry (with increments of 100 progeny) resampled 100 times without replacing individuals.

Estimate of the effect of mature male parr on genetic diversity in the progeny

We hypothesized that a greater contribution of mature male parr to allelic richness could be mediated by their large number associated with their small individual reproductive success compared to anadromous males. We therefore compared the total number of alleles found among progeny assigned to (i) anadromous pairs, (ii) anadromous female \times mature male parr and (iii) both types of pairs, for an increasing numbers of progeny sampled. We subsampled from 50 to 2500 fry, by steps of 50, 100 times for each step, and estimated the total number of alleles found among fry assigned to the three aforementioned groups of parents. To graphically represent the differences in the number of alleles among these three groups, we represented

a Loess regression of the median value of the total number of alleles found for each number of fry sampled considered, as well as the 5–95% interval distribution of the data.

Estimate of the effect of mature male parr on inbreeding

We investigated the effect of mature male parr on inbreeding by comparing the Loiselle et al. (1995) kinship coefficient estimated for the three following groups of breeders' pairs: (i) anadromous breeders, (ii) anadromous female \times mature male parr pairs and (iii) both type of pairs. We computed the Loiselle coefficient using the software GENODIVE (Meirmans and Van Tienderen 2004). First, we compared average kinship coefficients among breeders within each pair for (i) anadromous pairs, (ii) anadromous female \times mature male parr and (iii) both type of pairs. Each pair's kinship coefficient had the same weight. This first comparison allowed investigating the effect of the mating strategy on the relatedness among breeders. Second, for these three same groups of pairs, we compared kinship coefficients weighted by the relative reproductive success of each pairs. Weighting each pairs' kinship coefficient was achieved to assess the potential outcomes of the mating strategies on the next cohort. Second, we compared the Lynch (Lynch and Ritland 1999) inbreeding coefficients in fry produced by the three same groups of breeders' pairs as defined above. We computed Lynch coefficients using ML-RELATE (Kalinowski et al. 2006). We tested the significance in mean differences using *T*-tests implemented in R.

Results

Estimates of the impact of mature male parr on the effective number of breeders (Nb) and on Nb/Nc

Demographic estimates of male Nb were 50 without and 154 with mature male parr (Fig. 2A, Table S1). Female Nb was 79 without and 85 with mature male parr. Population Nb was 123 without and 220 with mature male parr. Therefore, male Nb, female Nb and population Nb were 3.07, 1.07, and 1.79 times larger when mature male parr were included. Using the replacement method Demo(2), the population Nb increased by only 3%, (Fig. 2B, Table S1), suggesting a modest bias in estimates of Nb originating from potential male competition.

Using LDNe to estimate Nb from the genetic data, we obtained values of 107 without and 198 with mature male parr, with confidence intervals of 5.6 and 11.7 (Table S1, Fig. 2B). The width of the confidence intervals varied from 5.6 to 11.7, with an average of 8.7. The Nb values estimated using LDNe were thus very similar to the one estimated with the demographic method Demo(1), though lower by 10% in average (Nb = 107 and 123 without mature male parr and 198 and 220 with mature male parr for genetic and demographic methods, respectively; Table S1, Fig. 2B).

The Nb/Nc ratios were 0.46 without and 0.82 with precocious parr to estimate Nb, respectively when we used Demo (1) to estimate Nb and included only anadromous fish in Nc (Table S1, Fig. 2C). Thus, including mature male parr into estimates of Nb but not Nc increased the Nb/Nc ratio.

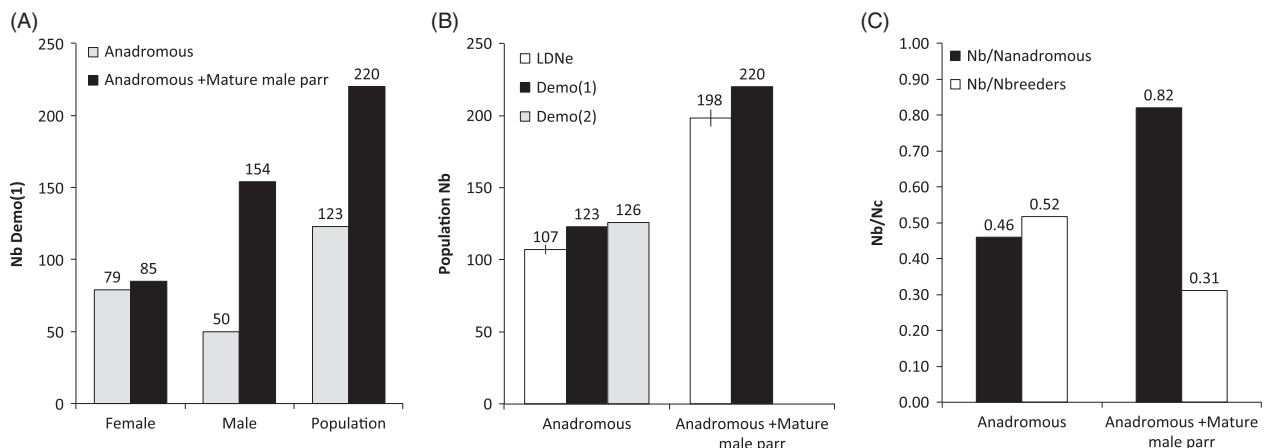


Figure 2 (A) Demographic estimates of effective number of breeders (Nb Demo(1)) for males, females, and the entire population, considering either only anadromous salmon or both anadromous fish and mature male parr. (B) Genetic (LDNe) and demographic estimates (Demo(1) and Demo(2)) of effective number of breeders considering either only anadromous salmon or both anadromous fish and mature male parr. There is no Demo(2) estimate when considering anadromous fish and mature male parr since all males were already considered in this estimation. Confidence intervals are drawn for LDNe estimates. (C) Ratio Nb/Nc for either only anadromous salmon or both anadromous fish and mature male parr. Nc corresponds either to the number of anadromous fish entering the river or to the number of breeders identified by parentage analyses.

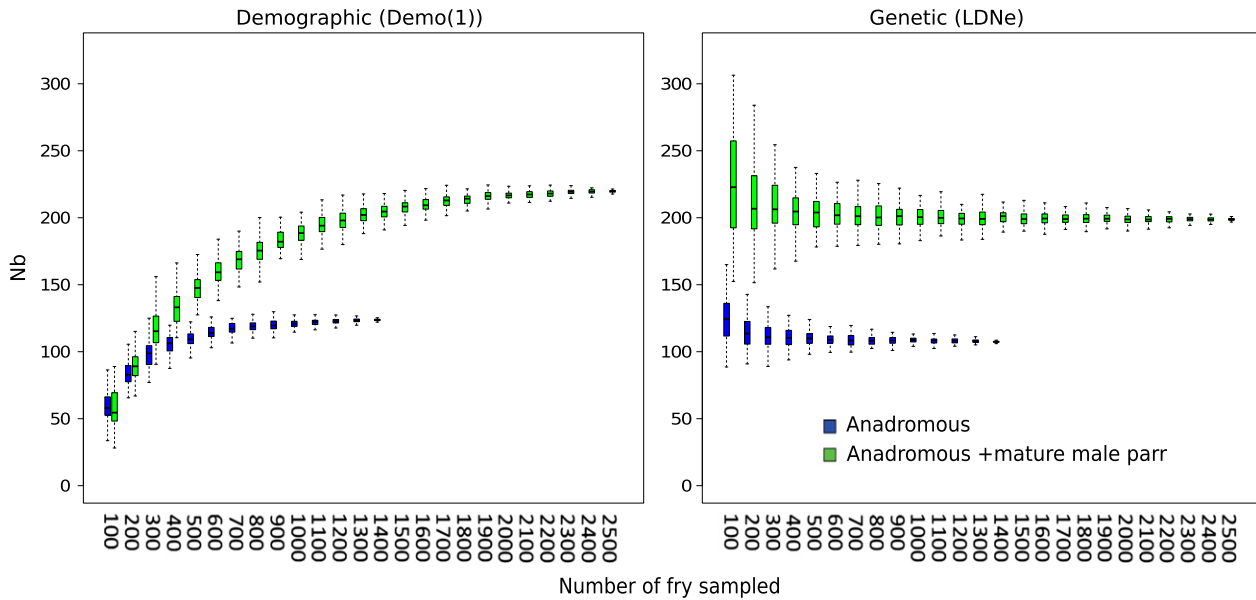


Figure 3 Boxplot of population’s Nb estimates obtained from demographic (Demo(1)) and genetic (LDNe) methods for either only anadromous salmon or both anadromous fish and mature male parr with 100–2500 (increments of 100 progeny) progeny subsampled 1000 and 100 times for Demo(1) and LDNe, respectively.

In contrast, when all the effective breeders (anadromous and mature male parr that had progeny assigned) were considered within Nc, the Nb/Nc ratios were 0.52 and 0.31, without and with precocious parr, respectively. Thus, including mature male parr to estimate both Nb and Nc reduced the Nb/Nc ratio through a more substantial increase in Nc relative to Nb.

Influence of the number of analyzed individuals on Nb estimates

We compared demographic (Nb Demo(1)) and genetic estimates (Nb LDNe) of Nb for various numbers of progeny (Fig. 3). As expected, the variance in Nb estimates decreased when an increasing number of progeny were resampled for both methods. The median values of the demographic estimates increased from 100 to 1500 juveniles sampled and then reached a plateau (Fig. 3A). For instance, median values of Nb were 55, 148, and 208 for 100, 500, and 1500 progeny subsampled, respectively, (anadromous individuals and mature male parr included). In contrast, the median values for the genetic estimates varied only slightly with the number of progeny (Fig. 3B). Median values of Nb were 223, 204, and 199 for 100, 500, and 1500 progeny subsampled, respectively, (anadromous individuals and mature male parr included). Similar trends were observed for datasets including only anadromous salmon or both anadromous fish and mature male parr.

Estimate of the effect of mature male parr on genetic diversity among progeny

Figure 4 illustrates a higher number of alleles among fry produced by pairs of anadromous females and mature male parr than for fry produced by pairs of anadromous fish. It also shows a lower number of alleles among fry produced by anadromous pairs than among fry produced by both anadromous pairs and that produced by anadromous females and mature male parr. For instance, sampling 1000 progeny 100 times, the average number of allele were 227 (SD = 1.44), 241 (SD = 2.95), and 248 (SD = 1.39) when considering progeny assigned to anadromous pairs, anadromous female and mature male parr, and both type of pairs, respectively. This figure also shows how the difference in the number of alleles among groups increases with the number of fry sampled. Overall, the total number of alleles was 230 and 256 without and with mature males parr.

Estimates of the effect of mature male parr on inbreeding

The Loiselle kinship coefficient was significantly higher among pairs of anadromous breeders (0.0072) than among pairs of anadromous female and mature male parr (−0.0055) (*T*-test, *t* = 3.87, *P* < 0.001) (Fig. 5A). The kinship coefficient was also higher on average among pairs of anadromous breeders compared with all type of pairs taken together (−0.0015) (*T*-test, *t* = 2.80, *P* < 0.01). When

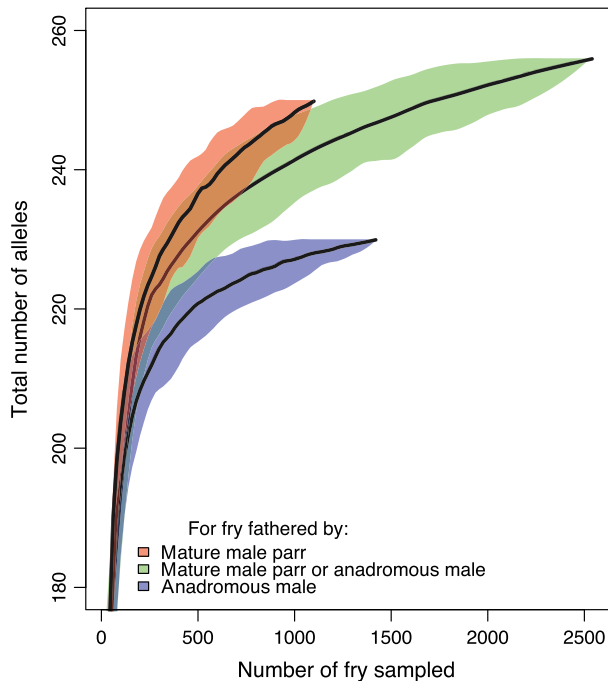


Figure 4 Loess regression of the median value of the number of alleles found for 50–2500 fry for fathers corresponding to (i) mature male parr, (ii) anadromous male or mature male parr and (iii) anadromous male. Each estimate was bootstrapped 100 times. Five to 95% interval distribution of the data were given around the median value.

adjusted for the relative reproductive success of each pair, kinship coefficient was on average higher among pairs of anadromous breeders (0.0030, Fig. 4A) than among pairs of anadromous female and mature male parr (-0.0030) (T -test, $t = 2.65$, $P < 0.01$). However, no significant difference was found in the average kinship coefficient among pairs of anadromous breeders compared to all type of pairs taken together (0.0004) (T -test, $t = 1.49$, $P = 0.14$). Estimates of Lynch's inbreeding coefficients were not different between fry produced by pairs of mature male parr and anadromous females compared to anadromous pairs (T -test, $t = 0.85$, $P = 0.39$) (Fig. 5B).

Discussion

Our study yields five important insights into the influence of nonanadromous males on key population genetic features in Atlantic salmon. First, it empirically illustrates the substantial increase in precision obtained for both demographic and linkage disequilibrium estimates of N_b with the number of samples used. Second, we found that mature male parr increased male N_b and population N_b by 3.07 and 1.79 times, respectively. Third, N_b/N_c was overestimated by at least 2.6 times when mature male parr were

overlooked. Fourth, mature male parr significantly increased the number of alleles found among the progeny. Finally, mature male parr decreased the average relatedness among breeders. These results have consequential evolutionary and conservation implications.

Comparisons between demographic and genetic estimates of the effective number of breeders (N_b)

While demographic and genetic methods used to estimate N_b technically differ, the N_b estimates calculated with these were quite similar, illustrating the strength of these approaches when applied to large datasets. Our results are in line with the study of Serbezov et al. (2012b) showing modest differences only between genetic ($N_b = 53$) and demographic ($N_b = 40$) N_b estimates in a small *Salmo trutta* population. Hoehn et al. (2012) also found comparable estimates of N_b using demographic and genetic estimates in a gecko species. Such comparisons of demographic and genetic estimates, however, remain relatively rare because the demographic method requires collecting and genotyping all or most of the potential parents in a population or otherwise having direct observations on the number and sex of parents and their reproductive success.

Although both genetic and demographic methods yielded similar estimates of N_b when applied to the entire dataset, the demographic method was very sensitive to the number of progeny used to estimate reproductive success, contrasting with the robustness of the genetic method. Indeed, our resampling procedure illustrated that the N_b estimates reached a plateau at 700 and 2000 progeny for anadromous males and mature male parr, respectively. Under these thresholds, N_b estimates were found increasingly underestimated with the decrease in the number of progeny considered. This can be explained by the need of large number of progeny to estimate the variance in reproductive success among breeders. In particular, given the potentially large number of mature male parr contributing to reproduction and because of their small individual reproductive success, each additional progeny sampled increased the chance to detect the participation of a mature male parr and thus to enrich the measure of their contribution to N_b . Hence, the number of progeny which were assigned parentage in Serbezov et al. (2012a) and in this study were, respectively, 3.0 and 3.6 times the total number of breeders identified (9.5 times the number of anadromous salmon entering the river in the study). Accordingly, such demographic estimate of N_b is limited to relatively small populations and/or exhaustive sampling. This is particularly true when an alternative mating strategy implicates a large number of breeders having small individual contributions.

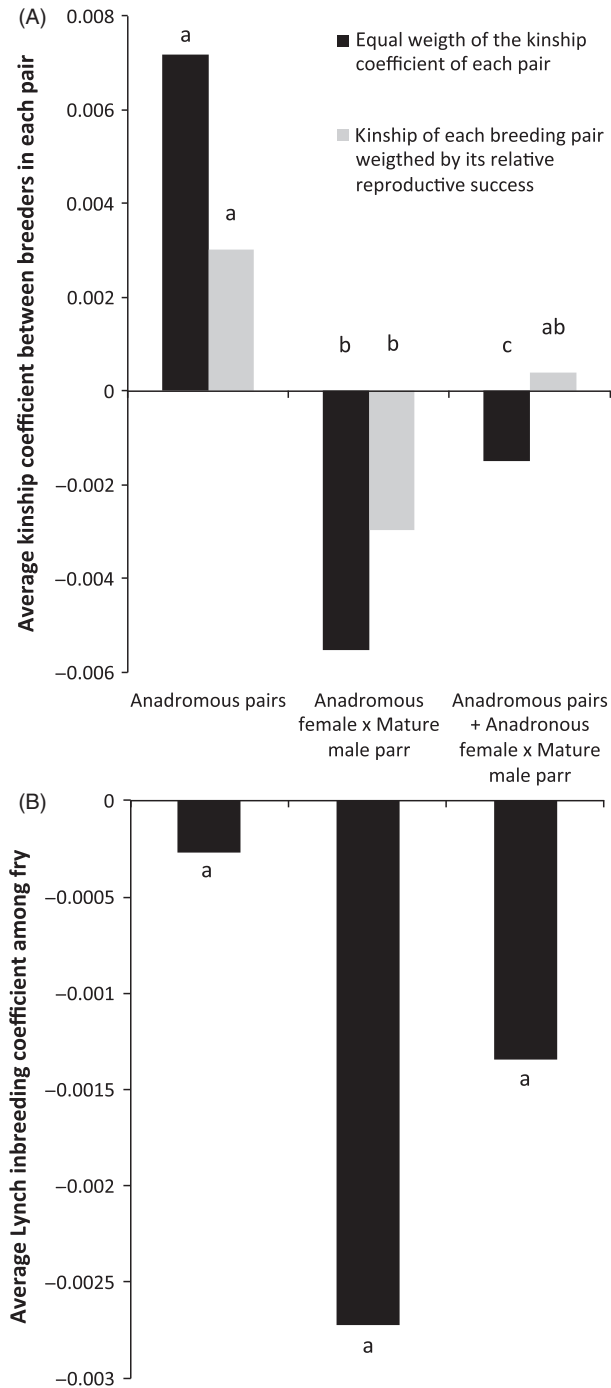


Figure 5 (A) Average Loiselle kinship coefficient among breeders within each pair for (i) anadromous pairs, (ii) anadromous female \times mature male parr pairs and (iii) both type of pairs. Kinship coefficients were given with and without weighting each pair's kinship value by the relative reproductive success of the given pair. (B) Average Lynch inbreeding coefficient among fry assigned to (i) anadromous pairs, (ii) anadromous female \times mature male parr pairs and (iii) both type of pairs. Letters indicates statistical differences when performing *t*-tests.

Even though exhaustive parental assignment were here required to link reproductive tactics (anadromous versus precocious male parr) to N_b , genetic estimates based on linkage disequilibrium among loci (Hill 1981; Waples and Do 2008) were much more robust than the demographic ones to the number of progeny subsampled. Indeed, using linkage disequilibrium signals found in 200 progeny (0.75 times the number of anadromous breeders, 0.28 times the total number of breeders) was sufficient to estimate N_b quite precisely. In addition, confidence intervals for the N_b estimated for progeny fathered by anadromous fish and mature male parr did not overlapped from 200 progeny subsampled. This precision obtained with the linkage disequilibrium method is in line with several recent studies reporting that this approach can be applied to small representative subset of individuals from small panmictic populations (Tallmon et al. 2010; Waples 2010; Waples and Do 2010; Antao et al. 2011; Whiteley et al. 2012). However, a relatively large variance in N_b estimates and a small overestimation were observed for a low value of 100. This variance could have been partly caused by unequal representation of families (Whiteley et al. 2012). Indeed, we did not take the geographic origin of progenies in consideration in our bootstrapping procedure to simplify it. Overall, this empirical comparison of demographic and linkage disequilibrium methods therefore adds to previous recommendations regarding sampling strategy and genotyping effort for precise estimate of N_b (Tallmon et al. 2010; Whiteley et al. 2012) but also for comparing the effect of different life history tactics on N_b .

Contribution of mature male parr to the effective number of breeders (N_b)

The participation of mature male parr in breeding resulted in a 3.07-fold increase in male N_b and a 1.79-fold increase in population N_b . These increases in N_b are lower than those reported by Saura et al. (2008) for Atlantic salmon, who found a 10-fold increase in male N_b and a two- to threefold increase in population N_b when mature male parr were included in N_b estimates. The differences in N_b increases between both studies may be principally due to the higher proportion of fry assigned to parr in Saura et al. (2008) compared to this study (60% and 44%, respectively). Nevertheless, it is also possible that differences between studies may be due to differences in census size (N_c anadromous fish \sim 41, compared to 268 here) and a much smaller number of progeny that could be assigned parentage (\sim 90, compared with 2548 here; corresponding to 4.3 times less progeny per anadromous fish). Our results were more consistent with those of Johnstone et al. (2013) showing that mature male parr increased male N_b by a factor of 3.2. Important contributions of mature male parr to

Nb have also been documented experimentally (Jones and Hutchings 2002), but values cannot be directly compared because the numbers of mature male parr introduced in these experiments were relatively small compared with numbers observed in the wild (Weir et al. 2010; Richard et al. 2013). Even if our assignment analysis was extensive compared with previous studies on Atlantic salmon (Jones and Hutchings 2001; Saura et al. 2008), it is unlikely that we identified all mature male parr present in the river.

Similarly to Saura et al. (2008), we found that the increase in male Nb due to the contributions from mature male parr had little impact on female Nb. This can first be explained by the usual involvement of at least one anadromous male mating with anadromous female (Fleming and Reynolds 2004; Richard et al. 2013). Accordingly, we found only six females, which mated with only mature male parr. Second, females which mated with many mature male parr increased their average reproductive success but also increased the variance in their reproductive success, leading to only a small increase in female Nb. Overall, although they had a low individual reproductive success (in absolute terms) compared with their anadromous counterparts, mature male parr increased population Nb by increasing census size and taking part in multiple matings.

Focusing on a single cohort allowed an efficient estimate of the contribution of mature male parr to the number of breeders, but their contribution to Ne may differ for several reasons. First, their contribution to Ne could be influenced by temporal fluctuations in the proportion of parr maturing that notably depends on environmental conditions (Herbinger and Friars 1992; Aubin-Horth and Dodson 2004; Piou and Prevost 2013). In addition, temporal fluctuations in the relative numbers of breeders from each category may affect operative sex ratio and thus Nb and Ne. Second, Atlantic salmon is not a semelparous species and exhibits some generational overlap. However, iteroparity rates remain generally low, varying between 0% and 10% (Fleming 1996). The influence of mature male parr on Ne should thus be similar to that on Nb since Ne and $Nb * \text{Generation length}$ are very similar in the case of semelparous species (Waples 1990) and for iteroparous species with low iteroparity rates (Hare et al. 2011). Nevertheless, even though the mortality of mature male parr can be increased by up to 56% compared with same age nonmaturing parr (Myers 1984), a proportion of them are able to achieve a migration at sea (Myers 1984; Hutchings and Myers 1987) and can thus reproduce both as parr and several years later as anadromous fish. Consequently, the contribution of mature male parr to Ne could be slightly lower than to Nb, as shown in brown trout (Serbezov et al. 2012a). Moreover, mature male parr are younger than the anadromous females they breed

with, thus potentially contributing to an increased genetic diversity and potentially Ne through mating between cohorts (Juanes et al. 2006). Future studies should aim at evaluating the contribution of mature male parr to effective population size over one or multiple generations, using lifetime rather than seasonal reproductive success, obtained by parental analyses over temporal monitoring of wild populations.

Mature male parr and the ratio of effective number of breeders to census size (Nb/Nc)

While variable proportions of mature male parr contribute to Nb, neither their abundance nor their reproductive successes relative to anadromous fish are usually quantified, resulting in underestimates of Nc and thus in overestimates of Nb/Nc. In the present study, the Nb/Nc ratio estimated using the demographic method changed from 0.82 to 0.31 when mature male parr were included in Nc, confirming that estimates of Nb/Nc in Atlantic salmon are biased when the breeding contribution of mature male parr is not taken into account (Palstra et al. 2009; Johnstone et al. 2013; Moore and Fraser 2013). On one hand, such biased Nb/Nc ratio may limit the comprehension of the mechanisms by which Nb differs from Nc. On the other hand, as one of the central aims of estimating Nb using molecular markers is to extrapolate Nc for conservation issues (Luikart et al. 2010), one could assume that such constant overestimation of Nb/Nc might not bias Nc estimates. However, this overestimation of Nb/Nc may be far from constant in time and space. Indeed, mature male parr have variable abundance and reproductive success relative to anadromous fish depending on the breeding population and latitude but also through time in a same river (Valiente et al. 2005; Dodson et al. 2013). It therefore appears critical to estimate to which extent such alternative mating strategies usually not considered in Nc may bias Nb/Nc and Ne/Nc estimates in various populations and over time.

Influence of mature male parr on genetic diversity and inbreeding

To our knowledge, this is the first study illustrating that mature male parr lead to an increase in the number of alleles observed in progeny (by 11%). Moreover, the number of alleles found in the progeny of anadromous pairs was lower than that observed among the fry produced by pairs including anadromous females and mature male parr. The larger number of mature male parr and their lower individual reproductive success compared with anadromous males can explain this result. This diversity could have also been slightly enhanced by asynchronous

maturation between mature male parr and anadromous males.

Similarly, this study is also the first to quantify the contribution of mature male parr to reducing relatedness among parents and inbreeding in fry in Atlantic salmon. While inbreeding was not significantly different between progeny fathered by mature male parr and anadromous males, relatedness was in average smaller between mature male parr and anadromous female than between anadromous partners. We thus propose that alternative sexual maturation strategies may result in reduced relatedness among breeders as well as long-term inbreeding depression at the population level. In salmonids, dispersal and active kin avoidance could play a role in inbreeding reduction. However, homing can be extremely accurate and gene flow low even between relatively close subpopulations of a single river-system (Dionne et al. 2008; Vaha et al. 2008). Similarly, while active mate choice based on MHC-related genes diversity has been suggested in salmonids (Landry et al. 2001), active kin avoidance among anadromous breeders has never been demonstrated. Two main mechanisms diminishing inbreeding in Atlantic salmon without implying an active, and selected for, kin avoidance can thus be proposed: multiple mating and overlap among generations. In the absence of mature male parr and in semi-natural conditions, Garant et al. (2005) suggested that multiple mating increased individual reproductive success and the proportion of outbred progeny in female Atlantic salmon. Although generation overlap can be provided by differences in age structure in anadromous fish, we propose that mating between anadromous females and asynchronously maturing male parr of an earlier cohort can be an effective way to decrease inbreeding. While mature male parr are most commonly 1+ or 2+ old (Dalley et al. 1983; Fig. 1), anadromous breeders are predominantly 4+, 5+, or 6+ (Palstra and Dionne 2011; Fig. 1), respectively. Therefore, while it is possible for anadromous breeders to breed with half-sibs or full sibs, it is virtually impossible for an anadromous female to mate with a mature male parr of same sex. Given the negative relationship between individuals' inbreeding and fitness previously documented in salmonids (Wang et al. 2001; Houde et al. 2011; Naish et al. 2013), such a strategy minimizing inbreeding without imposing a reproductive cost through kin avoidance might increase individual fitness, especially in the case of small populations where inbreeding is expected to rise. While the decrease of inbreeding associated with asynchronous maturation has been shown in subsocial spiders (Bukowski and Avilés 2002), this phenomenon has rarely been proposed in other animal taxa. Hence, future studies could further investigate the effect of asynchronous maturation in salmonids by linking parent age differences to their relatedness, their reproductive success and inbreeding in fry.

Implications for maintaining evolutionary potential and long-term persistence of populations

The increase in N_b and genetic diversity and the decrease in inbreeding caused by mature male parr have important implications for the management and long-term persistence of wild Atlantic salmon populations. From a demographic view, mature male parr constitute a male reservoir in freshwater that could compensate for fluctuations in the number of anadromous males returning from long spawning migrations. Compensation among reproductive forms has been shown to be responsible for limiting N_e fluctuations in other species (e.g., steelhead trout, (Ardren and Kapuscinski 2003; Araki et al. 2007)). When only relatively few anadromous male breeders survive until breeding, participation of mature male parr to reproduction may limit the decrease in N_e , the loss of genetic diversity, and contribute to reduce relatedness among fry. This may be especially important in the context of recreational fishing of Atlantic salmon in which generally only one-sea-winter fish, that are mainly males, can be kept. Moreover, the potential common overestimation of N_b/N_c should be carefully considered when such a ratio is taken into account for management purposes. As suggested by (de Mestral et al. 2012), it is important to consider mature male parr when estimating the number of breeders, especially when the number of anadromous fish, especially males, is low.

From an evolutionary perspective, this study confirms that mature male parr could contribute to the maintenance of evolutionary potential in wild salmonid populations. Assuming similar contributions of mature male parr to N_b and N_e , mature male parr may contribute to a global increase in N_e over the long term. A higher N_e may in turn insure greater and more stable population genetic diversity (Johnstone et al. 2013). In fact, the contribution of a large number of mature male parr to reproduction breeding effectively increased neutral genetic diversity at the loci considered in this study. Hence, N_e influences the rate of change in the genetic composition of a population due to drift and the effectiveness of selection relative to drift (Charlesworth 2009; Olson-Manning et al. 2012). A higher effective population size can also prevent the loss of standing variation via the fixation of neutral or nearly neutral alleles. These alleles may later be selected for if the local environment changes or during dispersal into marginal or new environments (Kawecki 2000; Lenormand 2002; Oakley 2013). Similarly, the reduction of inbreeding caused by the contribution of mature male parr could also reduce the risks of decrease in fitness associated with inbreeding depression (Wang et al. 2001; Naish et al. 2013). Eventually, the impact of mature male parr on the effective population size, genetic diversity, and inbreeding may contribute to limit the risk of extinction in small Atlantic salmon populations (Frankham 2005).

More globally, this study illustrates how demographic and genetic contributions of alternative reproductive strategies should be carefully considered from both evolutionary and conservation perspectives.

Acknowledgements

We thank E. Valiquette, J. Larivière, C. Baltazar, J. Bédard, E. Henry, M. Racine, G. Gravel, M. Duchesne, M. Talbot, N. Harnois, D. Fournier, V. Cauchon and W. Cayer-Blais for their field assistance. We are grateful to Y. Demers and to A. Dussault and to all the staff at the CGRSE. We also thank R. Waples for his advices regarding estimates of effective population size using the linkage disequilibrium method. We thank J.S. Moore and T. Gosselin for insightful discussions about puny males and alternative sexual practices. We are grateful to A. Dalziel for kind and talented linguistic adjustments to the manuscript. We finally thank five anonymous referees and the associate editor Dr. C. Eizaguirre. This project was funded by a Natural Sciences and Engineering Research Council of Canada strategic project grant to L.B., and by the Ministère du Développement durable, de l'Environnement et de la Faune du Québec (MDDEP). Ressources Aquatiques Québec provided fellowship and salary to C. Perrier and E. Normandeau.

Data archiving statement

Data for this study is available from the Dryad Digital Repository: <http://dx.doi.org/10.5061/dryad.20cf2>.

Authors contributions

C.P. and L.B. conceived the study. A.R. performed genotyping and parental assignments. C.P. and E.N. performed analyses pertaining to effective population size and inbreeding. C.P. wrote the manuscript. All authors contributed to the interpretation of the results and to the improvement of the manuscript. C.P. is post doc in L.B. lab and is interested in various aspects of evolutionary biology and conservation genetics of wild fish populations. M.D. is a research scientist at the MDDEP and focuses on understanding the ecology and evolution of fish in a conservation context. E.N. is bioinformaticist in L.B. lab. A.R. was MSc student in L.B. lab. L.B.'s research focuses on understanding the patterns and processes of molecular and organismal evolution as well as their significance to conservation.

Literature cited

Aljanabi, S. M., and I. Martinez 1997. Universal and rapid salt-extraction of high quality genomic DNA for PCR-based techniques. *Nucleic Acids Research* **25**:4692–4693.

- Antao, T., A. Perez-Figueroa, and G. Luikart 2011. Early detection of population declines: high power of genetic monitoring using effective population size estimators. *Evolutionary Applications* **4**:144–154.
- Araki, H., R. S. Waples, W. R. Ardren, B. Cooper, and M. S. Blouin 2007. Effective population size of steelhead trout: influence of variance in reproductive success, hatchery programs, and genetic compensation between life-history forms. *Molecular Ecology* **16**:953–966.
- Ardren, W. R., and A. R. Kapuscinski 2003. Demographic and genetic estimates of effective population size (N-e) reveals genetic compensation in steelhead trout. *Molecular Ecology* **12**:35–49.
- Aubin-Horth, N., and J. J. Dodson 2004. Influence of individual body size and variable thresholds on the incidence of a sneaker male reproductive tactic in Atlantic salmon. *Evolution* **58**:136–144.
- Aubin-Horth, N., D. A. J. Ryan, S. P. Good, and J. J. Dodson 2005. Balancing selection on size: effects on the incidence of an alternative reproductive tactic. *Evolutionary Ecology Research* **7**:1171–1182.
- Bukowski, T., and L. Avilés 2002. Asynchronous maturation of the sexes may limit close inbreeding in a subsocial spider. *Canadian Journal of Zoology* **80**:193–198.
- Charlesworth, B. 2009. Fundamental concepts in genetics: effective population size and patterns of molecular evolution and variation. *Nature Reviews Genetics* **10**:195–205.
- Charlesworth, D., and B. Charlesworth 1987. Inbreeding depression and its evolutionary consequences. *Annual Review of Ecology and Systematics* **18**:237–268.
- Crnokrak, P., and S. C. H. Barrett 2002. Perspective: purging the genetic load: a review of the experimental evidence. *Evolution* **56**:2347–2358.
- Crow, J. F., and M. Kimura 1970. *An Introduction to Population Genetics Theory*. Harper & Row, New York, pp. 1970.
- Crow, J. F., and N. E. Morton 1955. Measurement of gene frequency drift in small populations. *Evolution* **9**:202–214.
- Dalley, E. L., C. W. Andrews, and J. M. Green 1983. Precocious male Atlantic salmon parr (*Salmo salar*) in insular Newfoundland. *Canadian Journal of Fisheries and Aquatic Sciences* **40**:647–652.
- Dionne, M., F. Caron, J. J. Dodson, and L. Bernatchez 2008. Comparative survey of within-river genetic structure in Atlantic salmon; relevance for management and conservation. *Conservation Genetics* **10**:869–879.
- Dodson, J. J., N. Aubin-Horth, V. Theriault, and D. J. Paez 2013. The evolutionary ecology of alternative migratory tactics in salmonid fishes. *Biological Reviews of the Cambridge Philosophical Society* **88**:602–625.
- Duchesne, P., T. Castric, and L. Bernatchez 2005. PASOS (parental allocation of singles in open systems): a computer program for individual parental allocation with missing parents. *Molecular Ecology Notes* **5**:701–704.
- Edmands, S. 2007. Between a rock and a hard place: evaluating the relative risks of inbreeding and outbreeding for conservation and management. *Molecular Ecology* **16**:463–475.
- Fleming, I. A. 1996. Reproductive strategies of Atlantic salmon: ecology and evolution. *Reviews in Fish Biology and Fisheries* **6**:379–416.
- Fleming, I. A. 1998. Pattern and variability in the breeding system of Atlantic salmon (*Salmo salar*), with comparisons to other salmonids. *Canadian Journal of Fisheries and Aquatic Sciences* **55**:59–76.
- Fleming, I. A., and J. D. Reynolds 2004. Salmonid breeding systems. In A. P. Hendry, and S. C. Stearns, eds. *Evolution Illuminated. Salmon and Their Relatives*, pp. 264–294. Oxford University Press, New York.
- Frankham, R. 2005. Genetics and extinction. *Biological Conservation* **126**:131–140.

- Garant, D., J. J. Dodson, and L. Bernatchez 2003. Differential reproductive success and heritability of alternative reproductive tactics in wild Atlantic salmon (*Salmo salar* L.). *Evolution* **57**:1133–1141.
- Garant, D., J. J. Dodson, and L. Bernatchez 2005. Offspring genetic diversity increases fitness of female Atlantic salmon (*Salmo salar*). *Behavioral Ecology and Sociobiology* **57**:240–244.
- Gerlach, G., and N. Lysiak 2006. Kin recognition and inbreeding avoidance in zebrafish, *Danio rerio*, is based on phenotype matching. *Animal Behaviour* **71**:1371–1377.
- Grimardias, D., N. Merchermek, A. Manicki, J. Garnier, P. Gaudin, M. Jarry, and E. Beall 2010. Reproductive success of Atlantic salmon (*Salmo salar*) mature male parr in a small river, the Nivelles: influence of shelters. *Ecology of Freshwater Fish* **19**:510–519.
- Hare, M. P., L. Nunney, M. K. Schwartz, D. E. Ruzzante, M. Burford, R. S. Waples, K. Ruegg et al. 2011. Understanding and estimating effective population size for practical application in marine species management. *Conservation Biology* **25**:438–449.
- Hedrick, P. W., and S. T. Kalinowski 2000. Inbreeding depression in conservation biology. *Annual Review of Ecology and Systematics* **31**:139–162.
- Herbinger, C. M., and G. W. Friars 1992. Effects of winter temperature and feeding regime on the rate of early maturation in Atlantic salmon (*Salmo-Salar*) male parr. *Aquaculture* **101**:147–162.
- Hill, W. G. 1981. Estimation of effective population-size from data on linkage disequilibrium. *Genetical Research* **38**:209–216.
- Hoehn, M., B. Gruber, S. D. Sarre, R. Lange, and K. Henle 2012. Can genetic estimators provide robust estimates of the effective number of breeders in small populations? *PLoS ONE* **7**:e48464.
- Houde, A. L. S., D. J. Fraser, P. O'Reilly, and J. A. Hutchings 2011. Relative risks of inbreeding and outbreeding depression in the wild in endangered salmon. *Evolutionary Applications* **4**:634–647.
- Hutchings, J. A., and R. A. Myers 1987. Escalation of an asymmetric contest – mortality resulting from mate competition in Atlantic salmon, *Salmo-Salar*. *Canadian Journal of Zoology-Revue Canadienne De Zoologie* **65**:766–768.
- Hutchings, J. A., and R. A. Myers 1994. The evolution of alternative mating strategies in variable environments. *Evolutionary Ecology* **8**:256–268.
- Johnstone, D. L., M. F. O'Connell, F. P. Palstra, and D. E. Ruzzante 2013. Mature male parr contribution to the effective size of an anadromous Atlantic salmon (*Salmo salar*) population over 30 years. *Molecular Ecology* **22**:2394–2407.
- Jones, M. W., and J. A. Hutchings 2001. The influence of male parr body size and mate competition on fertilization success and effective population size in Atlantic salmon. *Heredity (Edinb)* **86**:675–684.
- Jones, M. W., and J. A. Hutchings 2002. Individual variation in Atlantic salmon fertilization success: implications for effective population size. *Ecological Applications* **12**:184–193.
- Jones, O. R., and J. Wang 2010. COLONY: a program for parentage and sibship inference from multilocus genotype data. *Molecular Ecology Resources* **10**:551–555.
- Juanes, F., J. Perez, and E. Garcia-Vazquez 2006. Reproductive strategies in small populations: using Atlantic salmon as a case study. Paper read at 2nd Ecology of Stream Fish Meeting, June 12–16, at Leon, Spain.
- Kalinowski, S. T., A. P. Wagner, and M. L. Taper 2006. ML-relate: a computer program for maximum likelihood estimation of relatedness and relationship. *Molecular Ecology Notes* **6**:576–579.
- Kawecki, T. J. 2000. Adaptation to marginal habitats: contrasting influence of the dispersal rate on the fate of alleles with small and large effects. *Proceedings of the Royal Society of London Series B: Biological Sciences* **267**:1315–1320.
- Kokko, H., and I. Ots 2006. When not to avoid inbreeding. *Evolution* **60**:467–475.
- Landry, C., D. Garant, P. Duchesne, and L. Bernatchez 2001. 'Good genes as heterozygosity': the major histocompatibility complex and mate choice in Atlantic salmon (*Salmo salar*). *Proceedings of the Royal Society of London Series B-Biological Sciences* **268**:1279–1285.
- Lenormand, T. 2002. Gene flow and the limits to natural selection. *Trends in Ecology & Evolution* **17**:183–189.
- Loiselle, B. A., V. L. Sork, J. Nason, and C. Graham 1995. Spatial genetic structure of a tropical understory shrub, *Psychotria officinalis* (*Rubiaceae*). *American Journal of Botany* **8**:1420–1425.
- Luikart, G., N. Ryman, D. A. Tallmon, M. K. Schwartz, and F. W. Allendorf 2010. Estimation of census and effective population sizes: the increasing usefulness of DNA-based approaches. *Conservation Genetics* **11**:355–373.
- Lynch, M., and K. Ritland 1999. Estimation of pairwise relatedness with molecular markers. *Genetics* **152**:1753–1766.
- Martinez, J. L., P. Moran, J. Perez, B. De Gaudemar, E. Beall, and E. Garcia-Vazquez 2000. Multiple paternity increases effective size of southern Atlantic salmon populations. *Molecular Ecology* **9**:293–298.
- Meirmans, P. G., and P. H. Van Tienderen 2004. GENOTYPE and GENODIVE: two programs for the analysis of genetic diversity of asexual organisms. *Molecular Ecology Notes* **4**:792–794.
- de Mestral, Louise. G., Christophe. M. Herbinger, and Patrick. T. O'Reilly 2012. Mating structure of an endangered population of wild Atlantic salmon (*Salmo salar*) as determined using sibship reconstruction and a novel method of sex inference. *Canadian Journal of Fisheries and Aquatic Sciences* **69**:1352–1361.
- Moore, J. S., and D. J. Fraser 2013. Puny males punch above their weight to preserve genetic diversity in a declining Atlantic salmon population. *Molecular Ecology* **22**:2364–2365.
- Myers, R. A. 1984. Demographic consequences of precocious maturation of Atlantic salmon (*Salmo-Salar*). *Canadian Journal of Fisheries and Aquatic Sciences* **41**:1349–1353.
- Myers, R. A., and J. A. Hutchings 1987. Mating of anadromous Atlantic salmon, *Salmo-Salar* L., with mature male parr. *Journal of Fish Biology* **31**:143–146.
- Naish, K. A., T. R. Seamons, M. B. Dauer, L. Hauser, and T. P. Quinn 2013. Relationship between effective population size, inbreeding and adult fitness-related traits in a steelhead (*Oncorhynchus mykiss*) population released in the wild. *Molecular Ecology* **22**:1295–1309.
- Oakley, C. G. 2013. Small effective size limits performance in a novel environment. *Evolutionary Applications* **6**:823–831.
- Olson-Manning, C. F., M. R. Wagner, and T. Mitchell-Olds 2012. Adaptive evolution: evaluating empirical support for theoretical predictions. *Nature Reviews Genetics* **13**:867–877.
- Paez, D. J., L. Bernatchez, and J. J. Dodson 2011. Alternative life histories in the Atlantic salmon: genetic covariances within the sneaker sexual tactic in males. *Proceedings of the Royal Society of London Series B-Biological Sciences* **278**:2150–2158.
- Palstra, F., and M. Dionne 2011. Analyse de la viabilité de populations de saumon atlantique (*Salmo salar*): premiers développements de l'approche au Québec. Ministère des Ressources naturelles et de la Faune, Direction de l'expertise sur la faune et ses habitats, Service de la faune aquatique, p. 101.
- Palstra, F. P., and D. J. Fraser 2012. Effective/census population size ratio estimation: a compendium and appraisal. *Ecology and Evolution* **2**:2357–2365.

- Palstra, F. P., M. F. O'Connell, and D. E. Ruzzante 2009. Age structure, changing demography and effective population size in Atlantic salmon (*Salmo salar*). *Genetics* **182**:1233–1249.
- Piche, J., J. A. Hutchings, and W. Blanchard 2008. Genetic variation in threshold reaction norms for alternative reproductive tactics in male Atlantic salmon, *Salmo salar*. *Proceedings of the Royal Society of London Series B-Biological Sciences* **275**:1571–1575.
- Piou, C., and E. Prevost 2013. Contrasting effects of climate change in continental vs. oceanic environments on population persistence and microevolution of Atlantic salmon. *Global Change Biology* **19**:711–723.
- Prevost, E., E. M. P. Chadwick, and R. R. Claytor 1992. Influence of size, winter duration and density on sexual maturation of Atlantic salmon (*Salmo salar*) juveniles in Little Codroy River (Southwest Newfoundland). *Journal of Fish Biology* **41**:1013–1019.
- Pusey, A., and M. Wolf 1996. Inbreeding avoidance in animals. *Trends in Ecology & Evolution* **11**:201–206.
- Richard, A., M. Dionne, J. Wang, and L. Bernatchez 2013. Does catch and release affect the mating system and individual reproductive success of wild Atlantic salmon (*Salmo salar* L.)? *Molecular Ecology* **22**:187–200.
- Saura, M., A. Caballero, P. Caballero, and P. Moran 2008. Impact of precocious male parr on the effective size of a wild population of Atlantic salmon. *Freshwater Biology* **53**:2375–2384.
- Schwartz, M. K., G. Luikart, and R. S. Waples 2007. Genetic monitoring as a promising tool for conservation and management. *Trends in Ecology & Evolution* **22**:25–33.
- Serbezov, D., P. E. Jorde, L. Bernatchez, E. M. Olsen, and L. A. Vollestad 2012a. Life history and demographic determinants of effective/census size ratios as exemplified by brown trout (*Salmo trutta*). *Evolutionary Applications* **5**:607–618.
- Serbezov, D., P. E. Jorde, L. Bernatchez, E. M. Olsen, and L. A. Vollestad 2012b. Short-term genetic changes: evaluating effective population size estimates in a comprehensively described brown trout (*Salmo trutta*) population. *Genetics* **191**:579–592.
- Stockley, P., J. B. Searle, D. W. Macdonald, and C. S. Jones 1993. Female multiple mating behaviour in the common shrew as a strategy to reduce inbreeding. *Proceedings of the Royal Society of London Series B-Biological Sciences* **254**:173–179.
- Tallmon, D. A., D. Gregovich, R. S. Waples, C. Scott Baker, J. Jackson, B. L. Taylor, E. Archer et al. 2010. When are genetic methods useful for estimating contemporary abundance and detecting population trends? *Molecular Ecology Resources* **10**:684–692.
- Tregenza, T., and N. Wedell 2002. Polyandrous females avoid costs of inbreeding. *Nature* **415**:71–73.
- Vaha, J. P., J. Erkinaro, E. Niemela, and C. R. Primmer 2008. Temporally stable genetic structure and low migration in an Atlantic salmon population complex: implications for conservation and management. *Evolutionary Applications* **1**:137–154.
- Valiente, A. G., F. Juanes, and E. Garcia-Vazquez 2005. Reproductive strategies explain genetic diversity in Atlantic salmon, *Salmo salar*. *Environmental Biology of Fishes* **74**:323–334.
- Van Oosterhout, C., W. F. Hutchinson, D. P. M. Wills, and P. Shipley 2004. MICRO-CHECKER: software for identifying and correcting genotyping errors in microsatellite data. *Molecular Ecology Notes* **4**:535–538.
- Wang, S., J. J. Hard, and F. Utter 2001. Salmonid inbreeding: a review. *Reviews in Fish Biology and Fisheries* **11**:301–319.
- Waples, R. S. 1990. Conservation genetics of Pacific salmon. 3. Estimating effective population-size. *Journal of Heredity* **81**:277–289.
- Waples, R. S. 2002. Evaluating the effect of stage-specific survivorship on the N(e)/N ratio. *Molecular Ecology* **11**:1029–1037.
- Waples, R. S. 2005. Genetic estimates of contemporary effective population size: to what time periods do the estimates apply? *Molecular Ecology* **14**:3335–3352.
- Waples, R. S. 2010. Spatial-temporal stratifications in natural populations and how they affect understanding and estimation of effective population size. *Molecular Ecology Resources* **10**:785–796.
- Waples, R. S., and C. Do 2008. Idne: a program for estimating effective population size from data on linkage disequilibrium. *Molecular Ecology Resources* **8**:753–756.
- Waples, R. S., and C. Do 2010. Linkage disequilibrium estimates of contemporary Ne using highly variable genetic markers: a largely untapped resource for applied conservation and evolution. *Evolutionary Applications* **3**:244–262.
- Weir, L. K., C. Breau, J. A. Hutchings, and R. A. Cunjak 2010. Multiple paternity and variance in male fertilization success within Atlantic salmon *Salmo salar* redds in a naturally spawning population. *Journal of Fish Biology* **77**:479–493.
- Whiteley, A. R., J. A. Coombs, M. Hudy, Z. Robinson, K. H. Nislow, and B. H. Letcher 2012. Sampling strategies for estimating brook trout effective population size. *Conservation Genetics* **13**:625–637.
- Wright, S. 1938. Size of populations and breeding structure in relation to evolution. *Science* **87**:430–431.

Supporting Information

Additional Supporting Information may be found in the online version of this article:

Table S1. Demographic and genetic estimates of the breeding contribution of anadromous salmon and mature male parr to the effective number of breeders (N_b) and the N_b/N_c ratio in the Escoumins River in 2009.