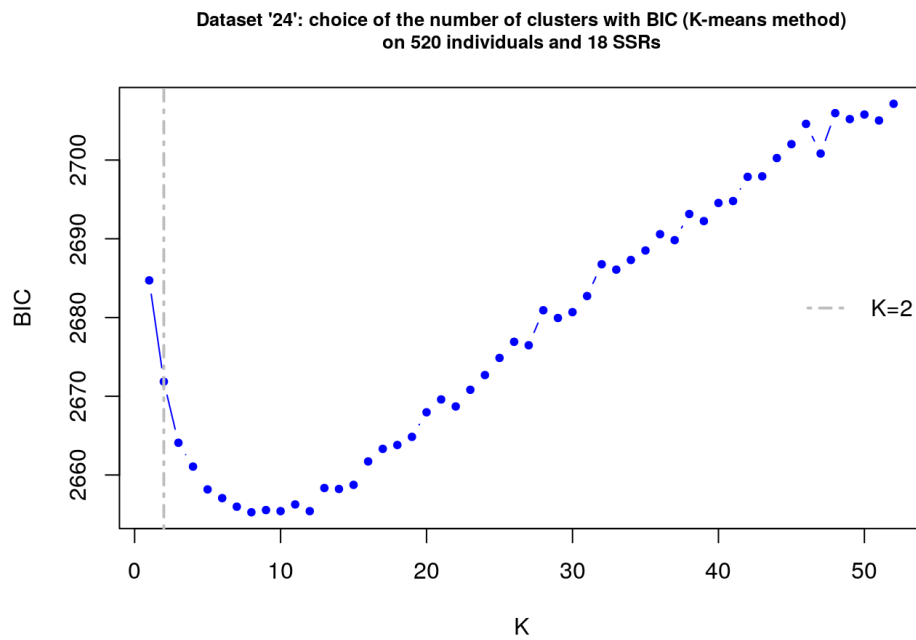


TWO MAIN GENETIC CLUSTERS WITH HIGH ADMIXTURE BETWEEN FOREST AND CULTIVATED CHESTNUT (*CASTANEA SATIVA* MILL.) IN FRANCE

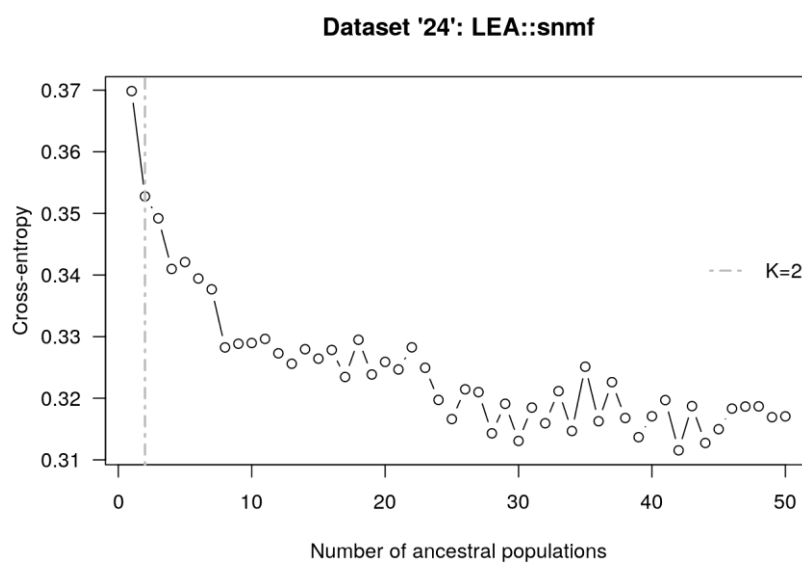
ESM_7 DETECTION OF GENETIC CLUSTERS

ESM_7A 18UNIK DATA SET

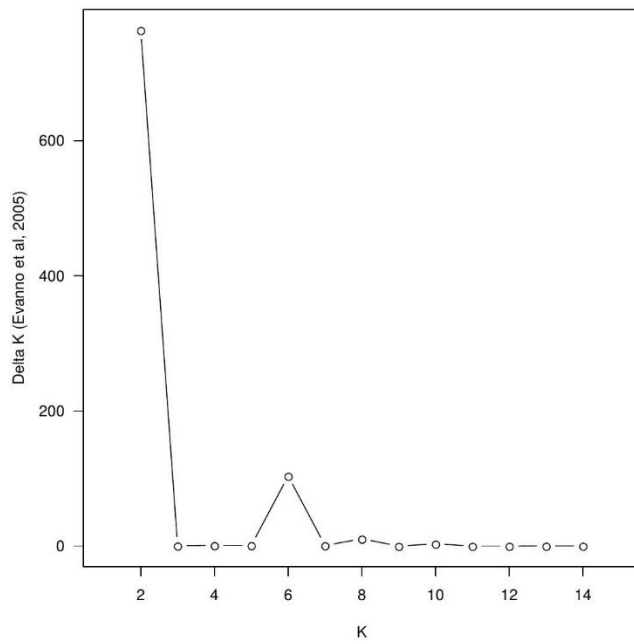
BIC OF THE 18UNIK DATA SET



CROSS-ENTROPY CRITERION OF THE 18UNIK DATA SET



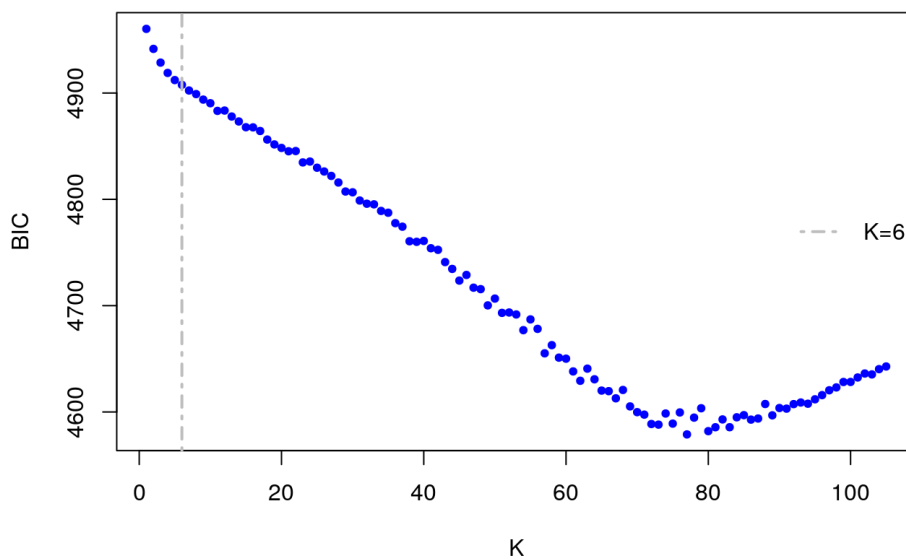
DELTA K OF THE 18UNIK DATA SET



ESM_7B 10UNIK DATA SET

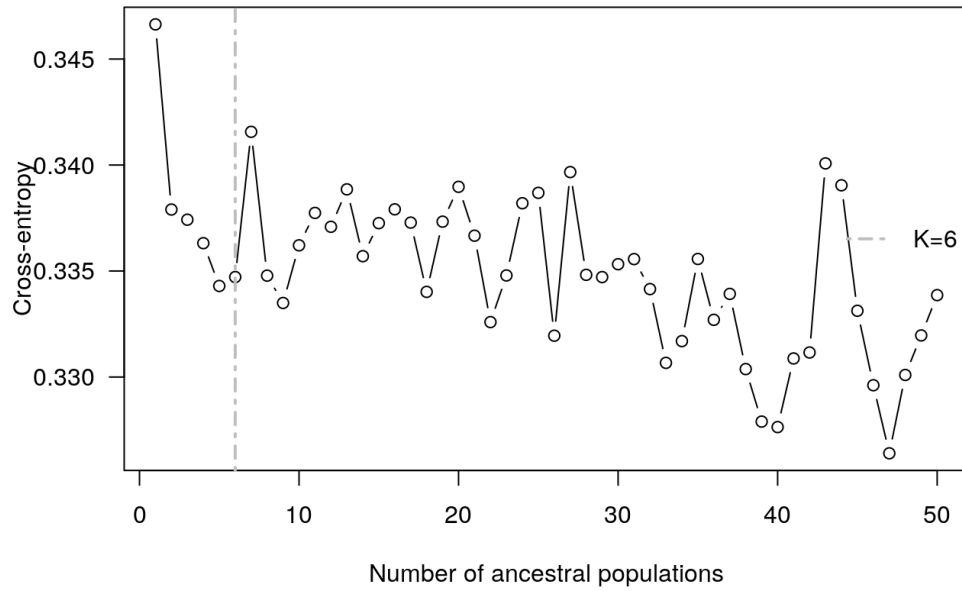
BIC OF THE 10UNIK DATA SET

Dataset '13': choice of the number of clusters with BIC (K-means method) on 1050 individuals and 10 SSRs

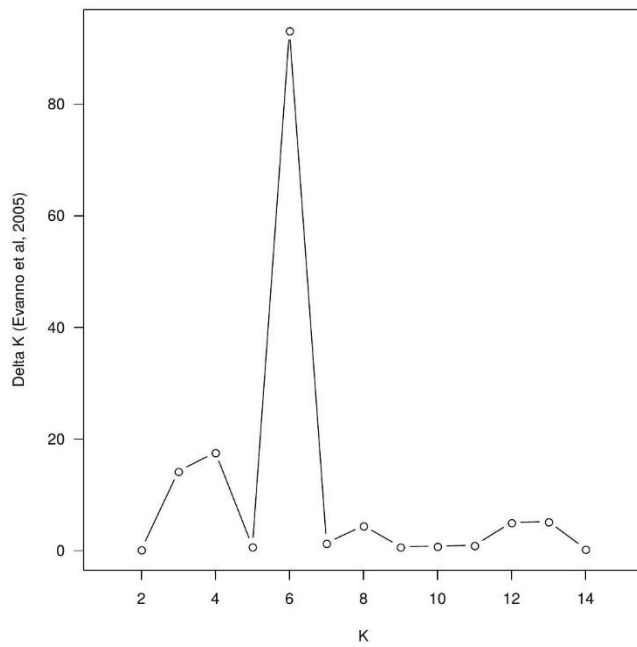


CROSS-ENTROPY CRITERION OF THE *10UNIK* DATA SET

Dataset '13': LEA::snmf

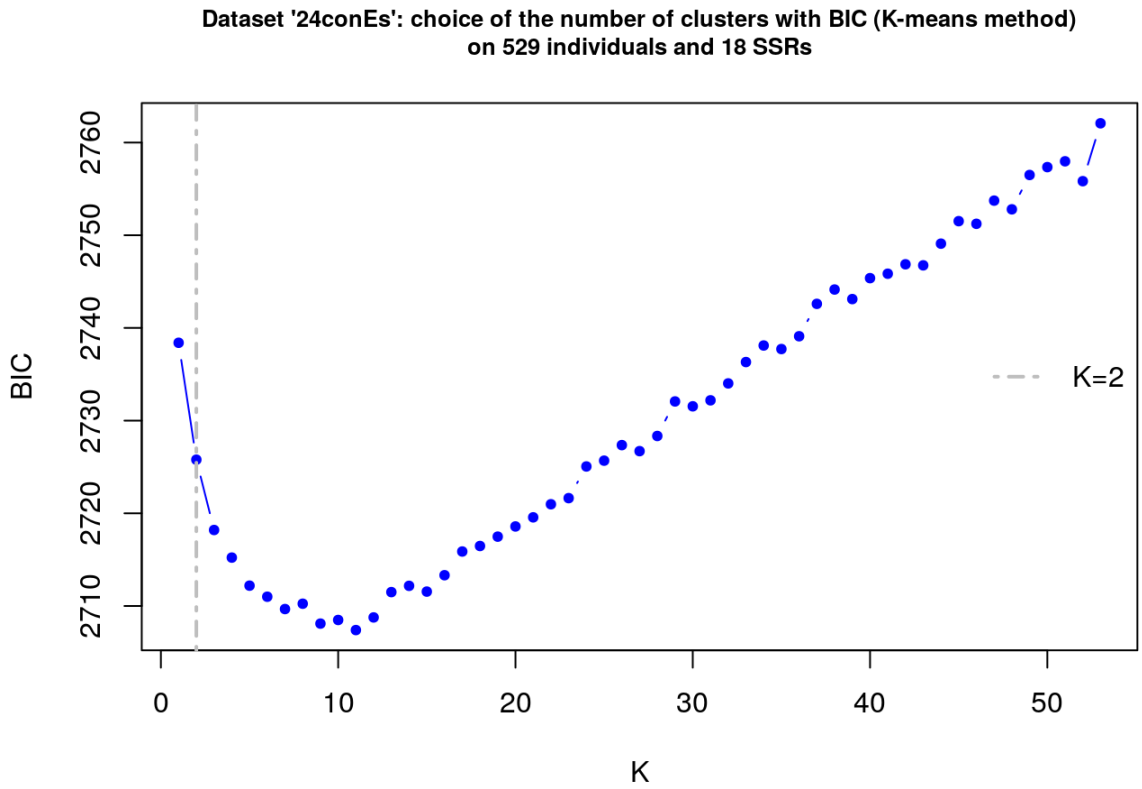


DELTA K OF THE *10UNIK* DATA SET



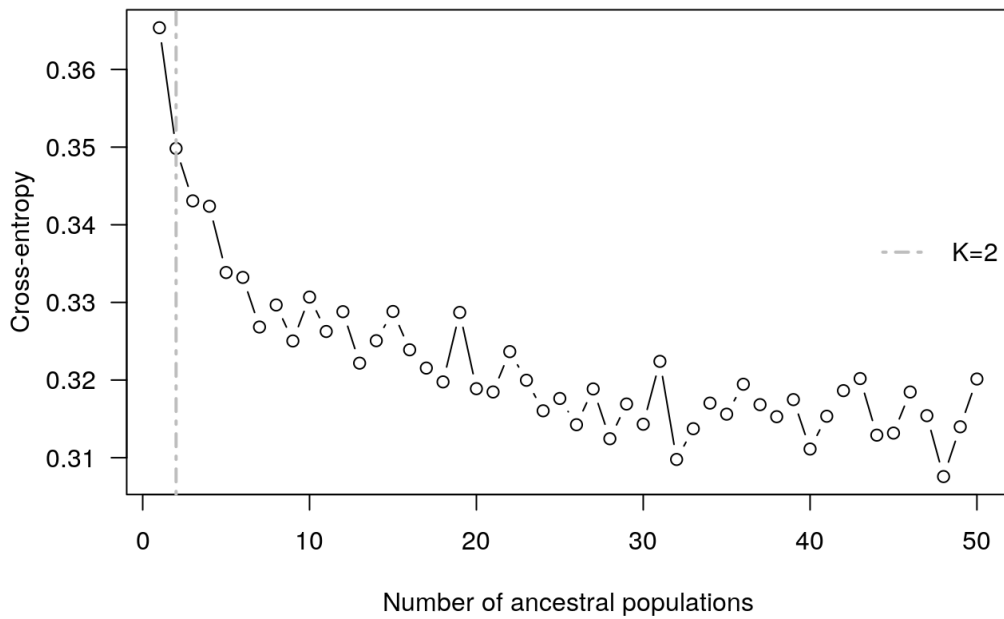
ESM_7C 18UNIK DATA SET WITH SPANISH SAMPLES

BIC OF THE 18UNIK DATA SET WITH SPANISH SAMPLES

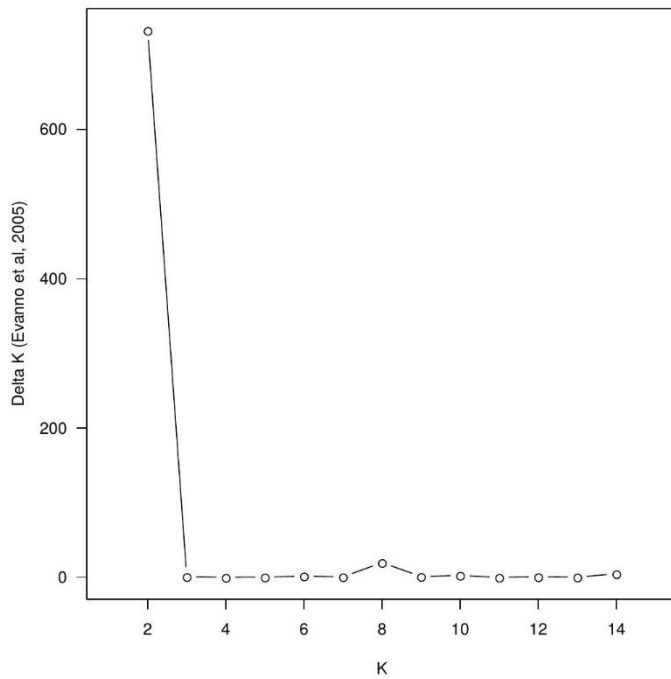


CROSS-ENTROPY CRITERION OF THE 18UNIK DATA SET WITH SPANISH SAMPLES

Dataset '24conEs': LEA::snmf



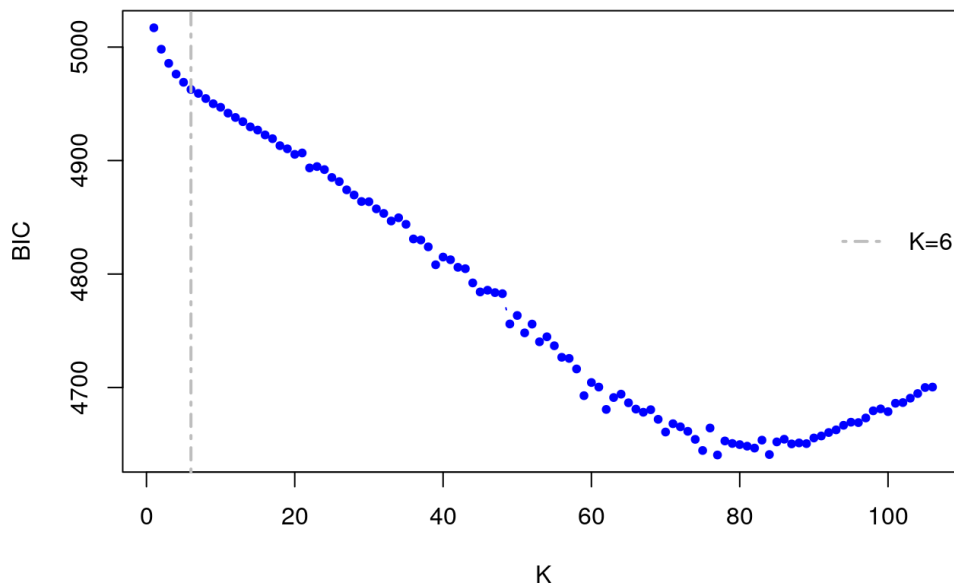
DELTA K OF THE 18UNIK DATA SET WITH SPANISH SAMPLES



ESM_7D 10UNIK DATA SET WITH SPANISH SAMPLES

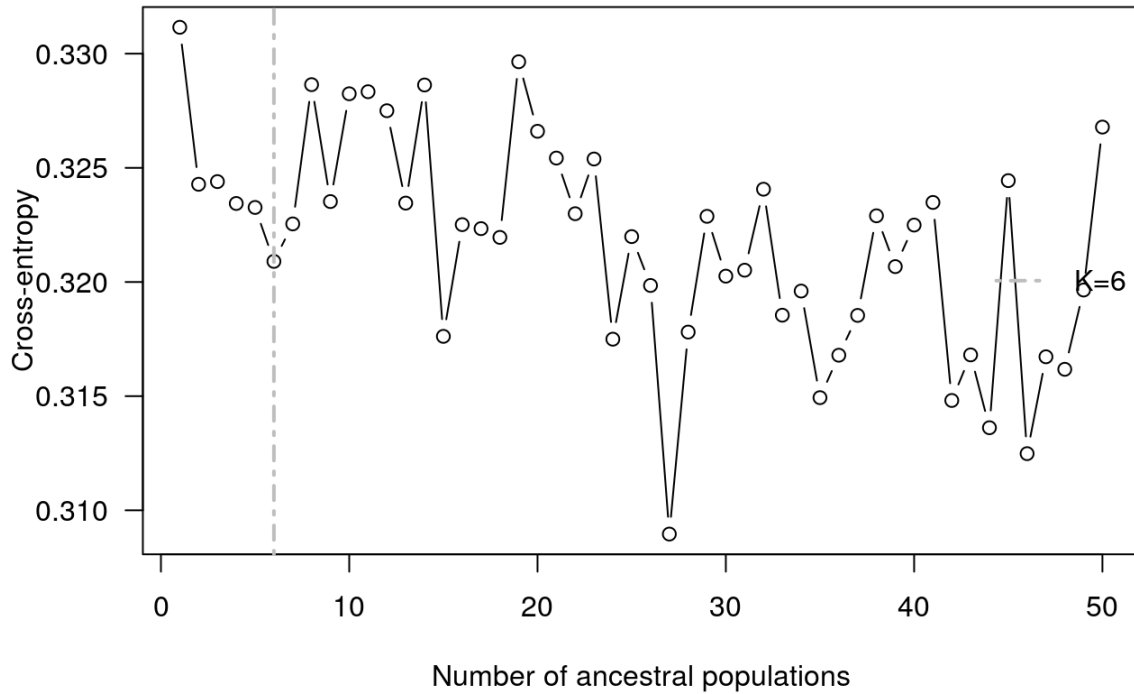
BIC OF OF THE 10UNIK DATA SET WITH SPANISH SAMPLES

Dataset '13conEs': choice of the number of clusters with BIC (K-means method) on 1060 individuals and 10 SSRs



CROSS-ENTROPY CRITERION OF THE *10UNIK* DATA SET WITH SPANISH SAMPLES

Dataset '13conEs': LEA::snmf



DELTA K OF THE *10UNIK* DATA SET WITH SPANISH SAMPLES

