



HAL
open science

Stress, Drug Resistance, Adhesion: the dark side of the wall

Hélène Martin-Yken

► **To cite this version:**

Hélène Martin-Yken. Stress, Drug Resistance, Adhesion: the dark side of the wall. 2016. hal-02951910

HAL Id: hal-02951910

<https://hal.inrae.fr/hal-02951910>

Submitted on 29 Sep 2020

HAL is a multi-disciplinary open access archive for the deposit and dissemination of scientific research documents, whether they are published or not. The documents may come from teaching and research institutions in France or abroad, or from public or private research centers.

L'archive ouverte pluridisciplinaire **HAL**, est destinée au dépôt et à la diffusion de documents scientifiques de niveau recherche, publiés ou non, émanant des établissements d'enseignement et de recherche français ou étrangers, des laboratoires publics ou privés.

Stress, Drug Resistance, Adhesion: the dark side of the wall.



Hélène Martin-Yken

e-mail: helene.martin@insa-toulouse.fr

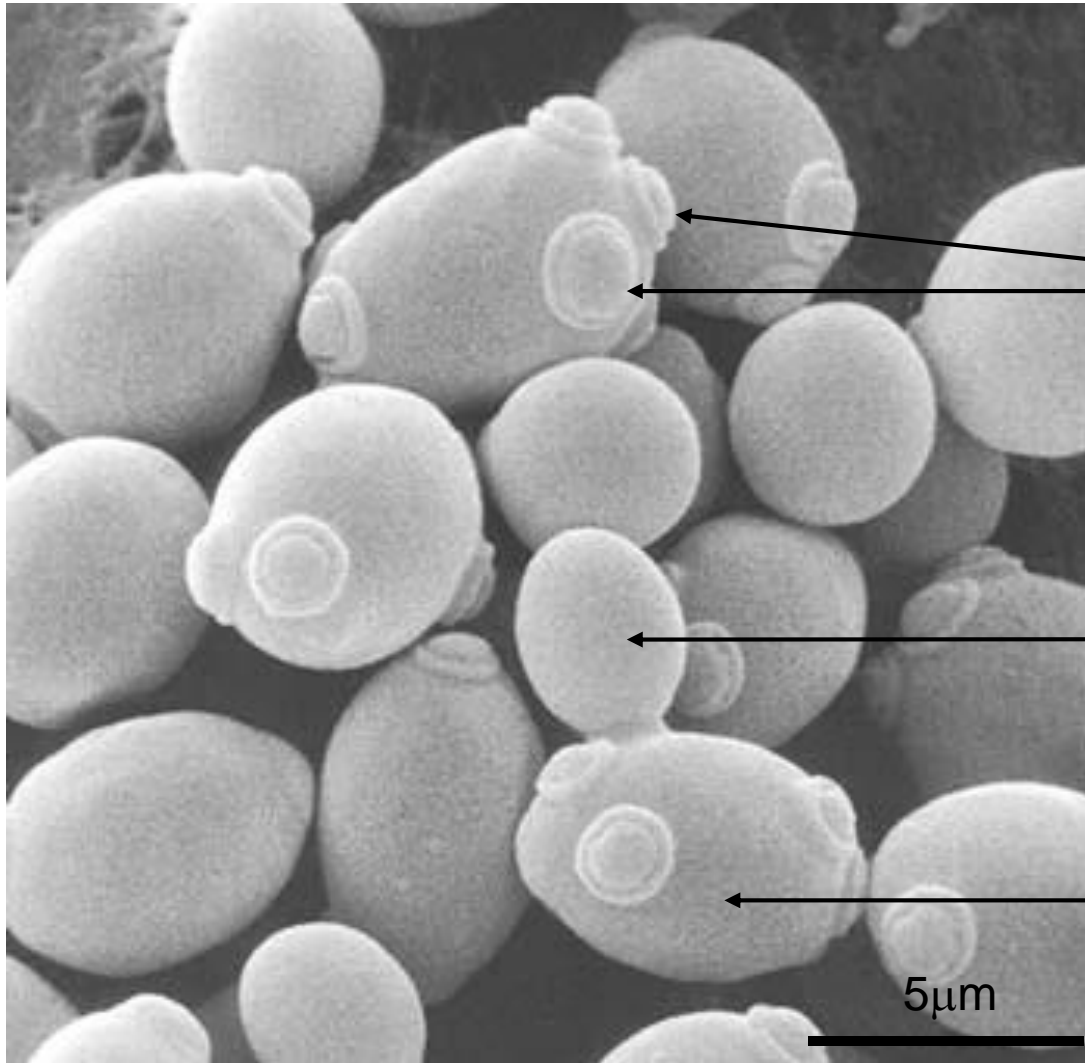
LISBP

LABORATOIRE D'INGÉNIERIE
DES SYSTÈMES BIOLOGIQUES
ET DES PROCÉDÉS





Yeasts



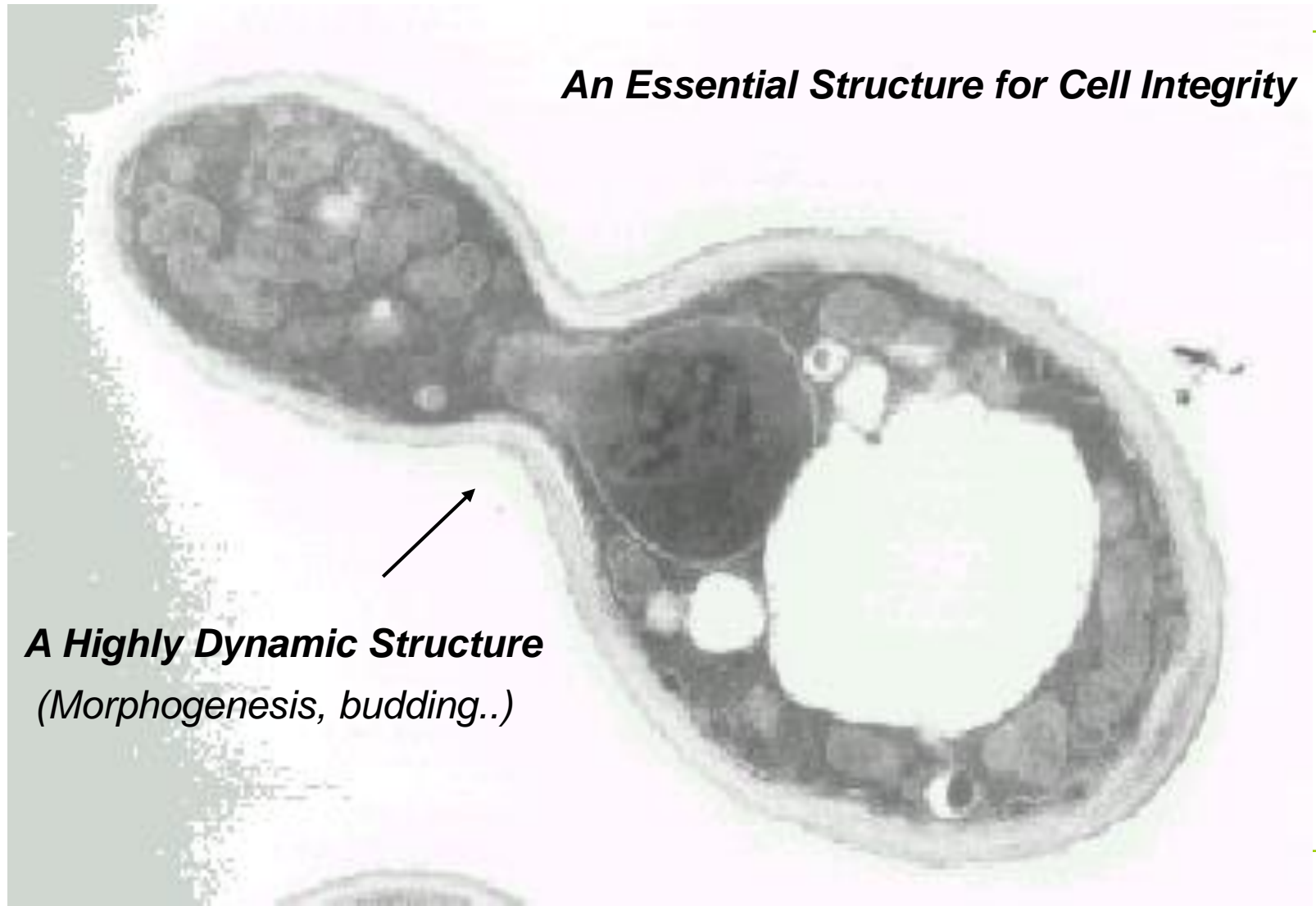
Bud
scars

Daughter cell

Mother cell

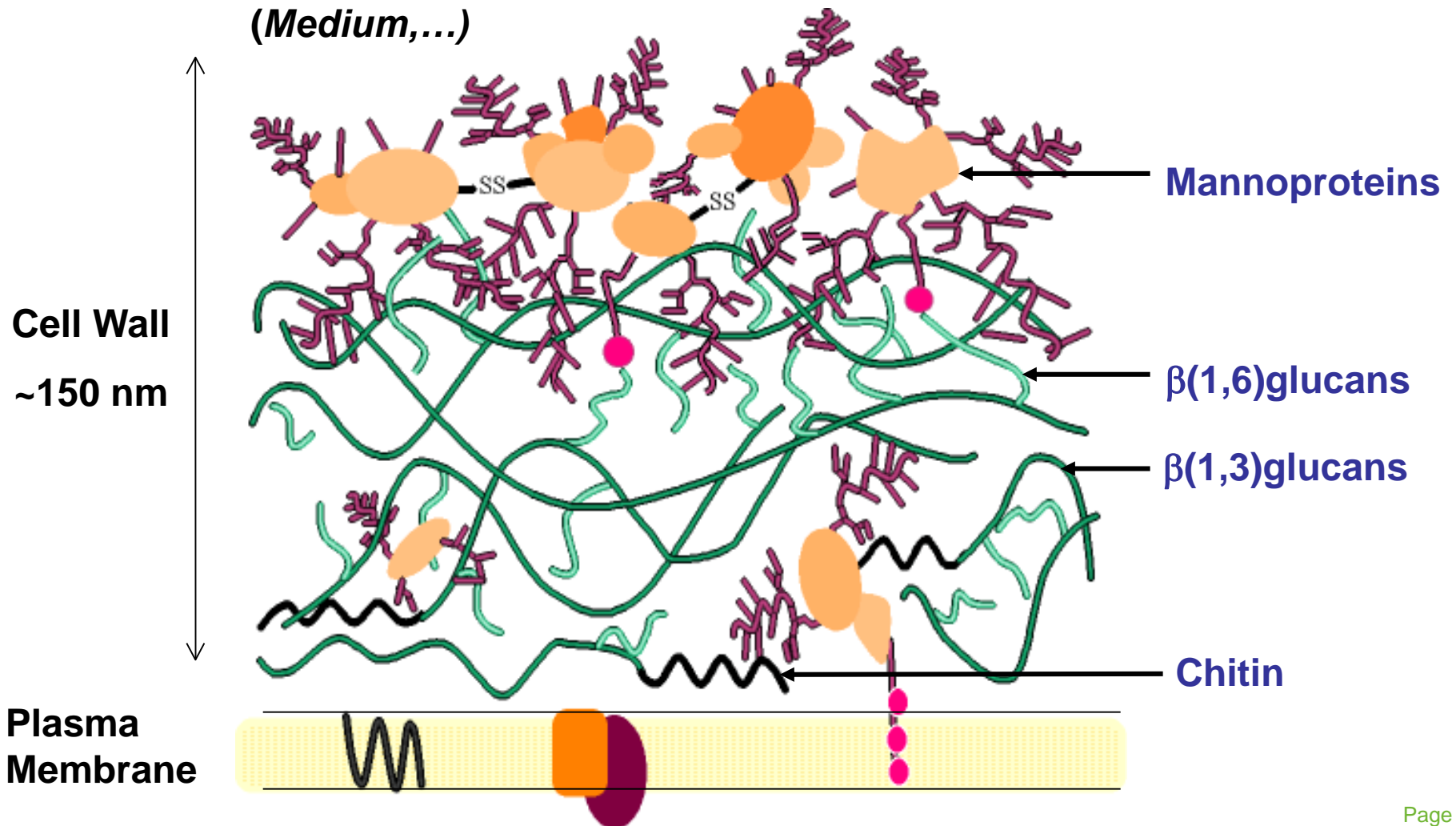
The Yeast Cell Wall

An Essential Structure for Cell Integrity



A Highly Dynamic Structure
(Morphogenesis, budding..)

The Yeast Cell Wall Architecture

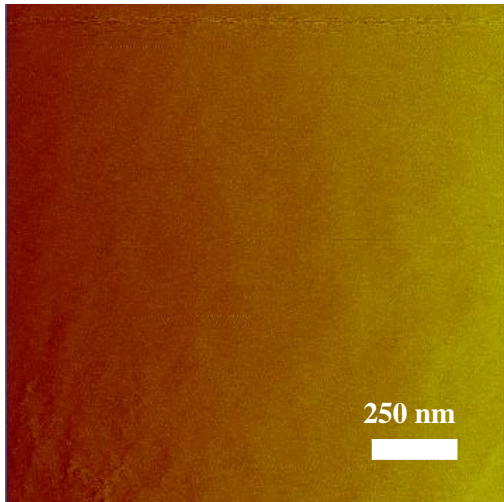


Using

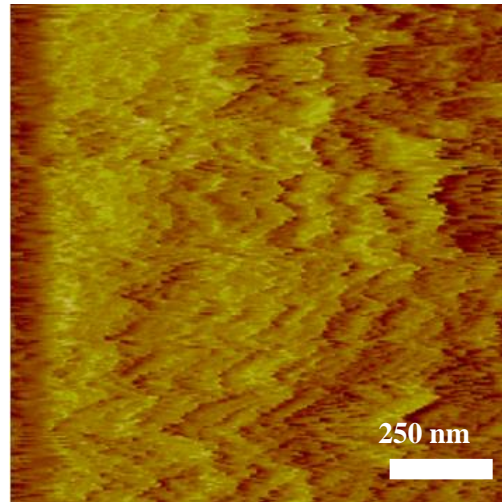


AFM : imaging and nano-mechanics of the cell wall

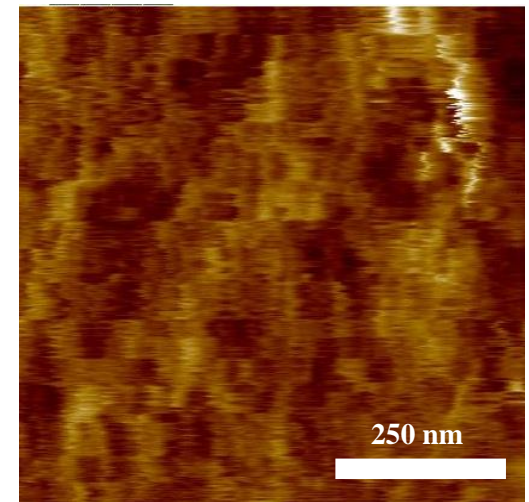
Control strain



mnn9 (affected in mannan synthesis)



fks1 (affected in β -glucan synthesis)



Young's modulus 1.62 ± 0.22 (MPa)

1.86 ± 0.58

2.02 ± 0.43

Roughness 1.21 ± 0.30

2.95 ± 0.65

5.76 ± 1.8

Elasticity \rightarrow

Elasticity \searrow

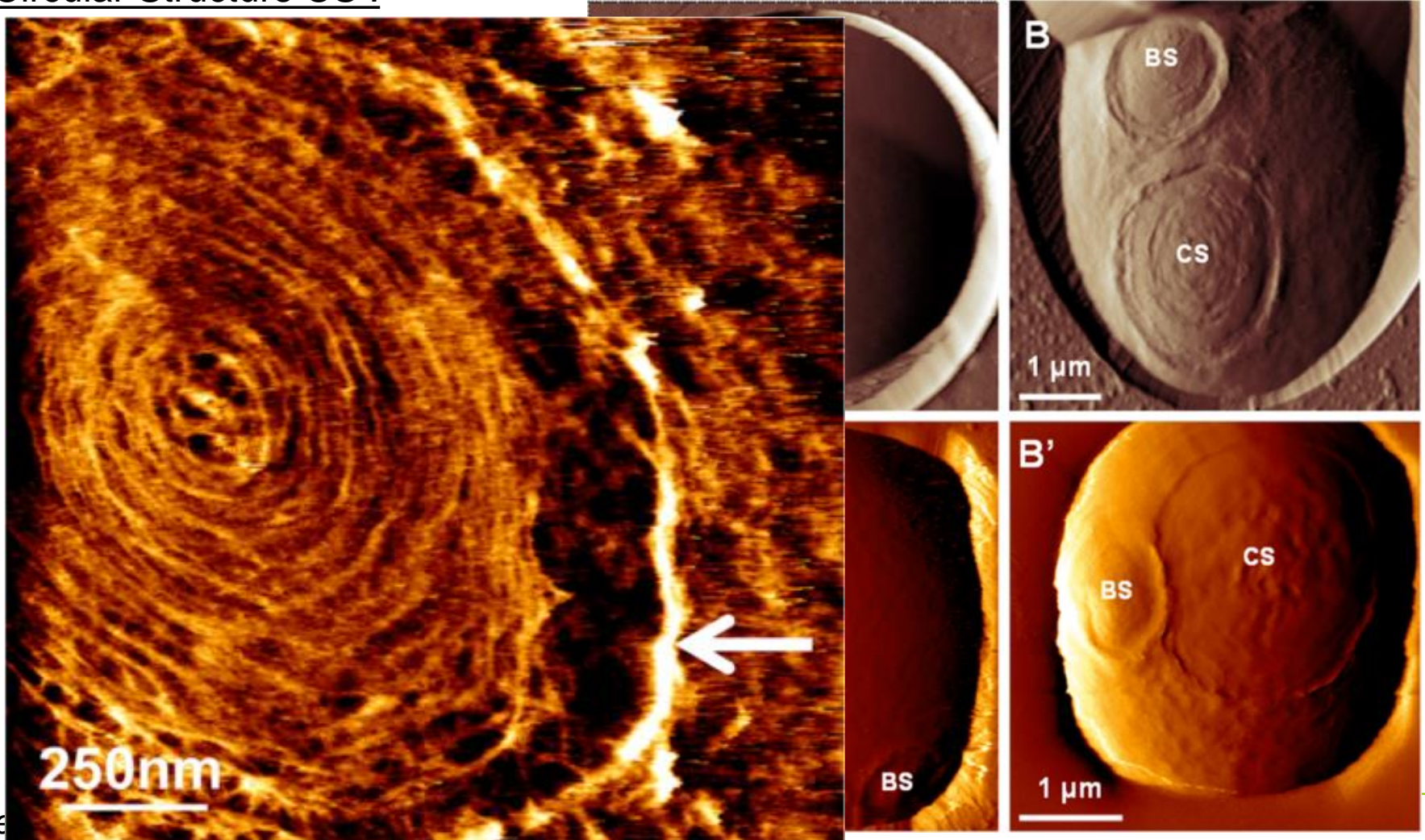
Rugosity \nearrow

Rugosity \nearrow

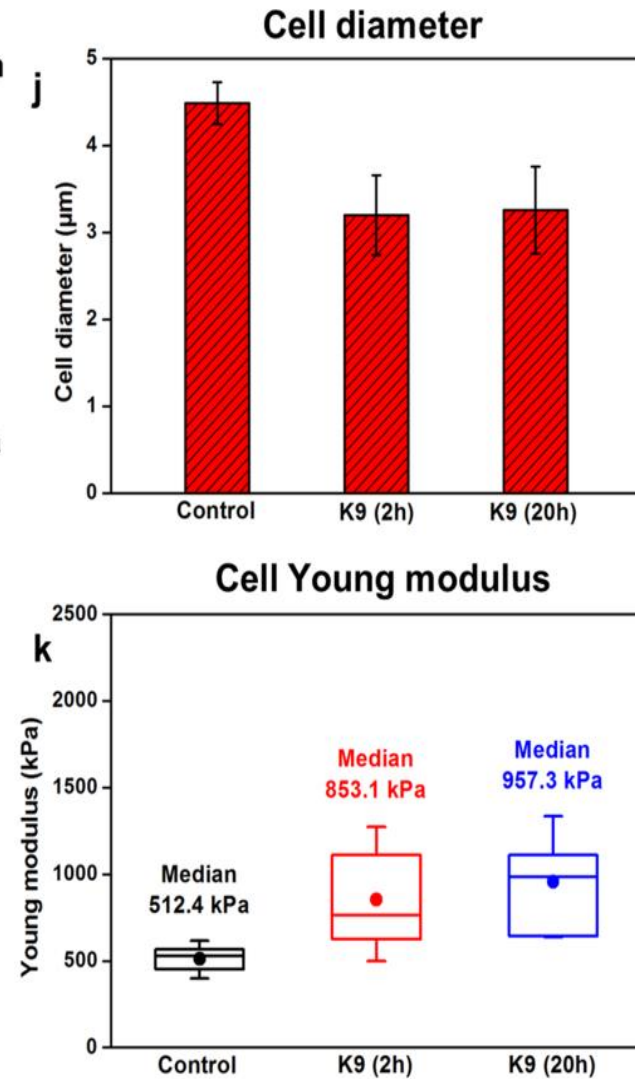
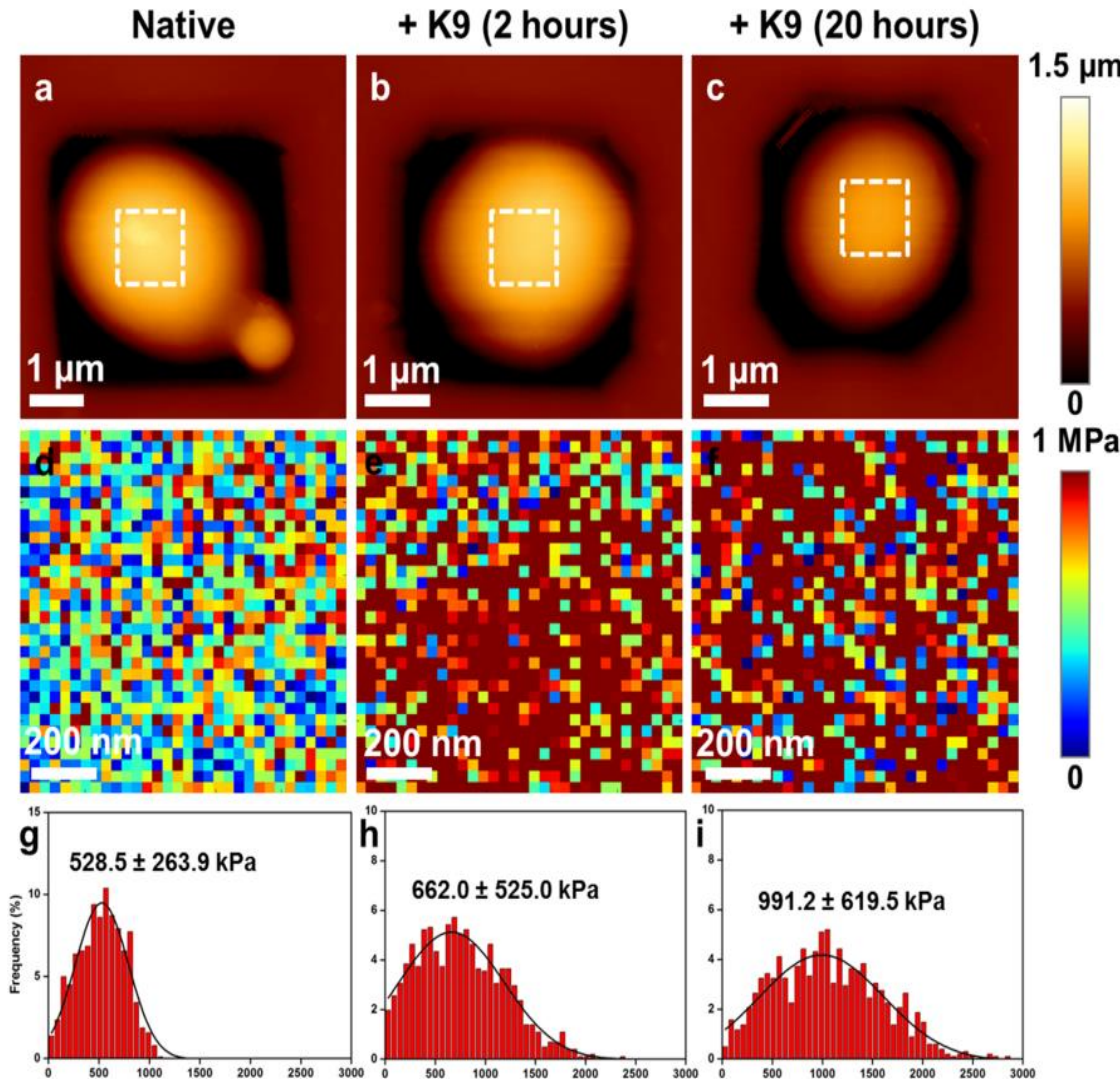
Ultrastructure of the Circular Structure CS :

A, A' : unstressed (30°C)

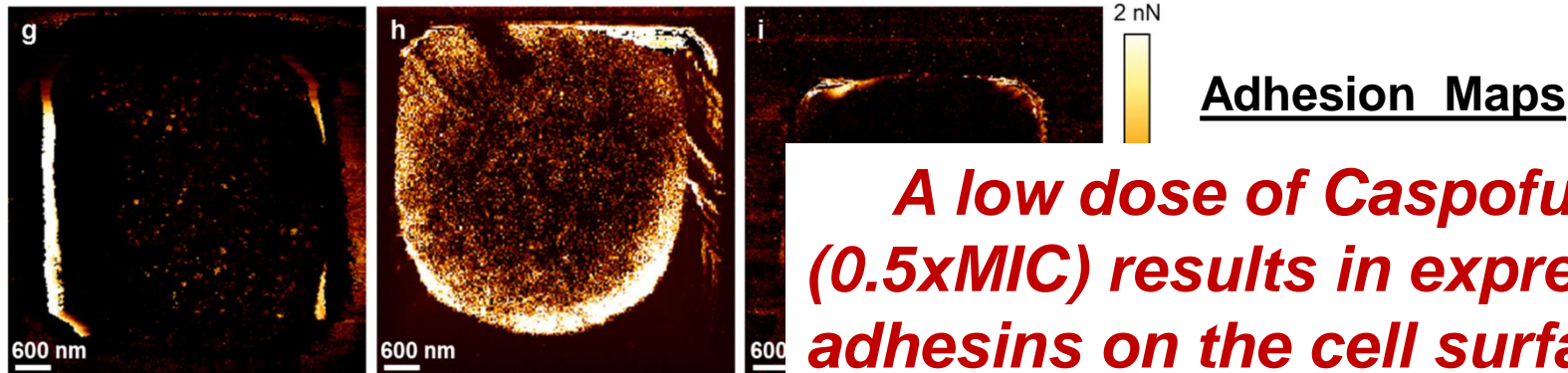
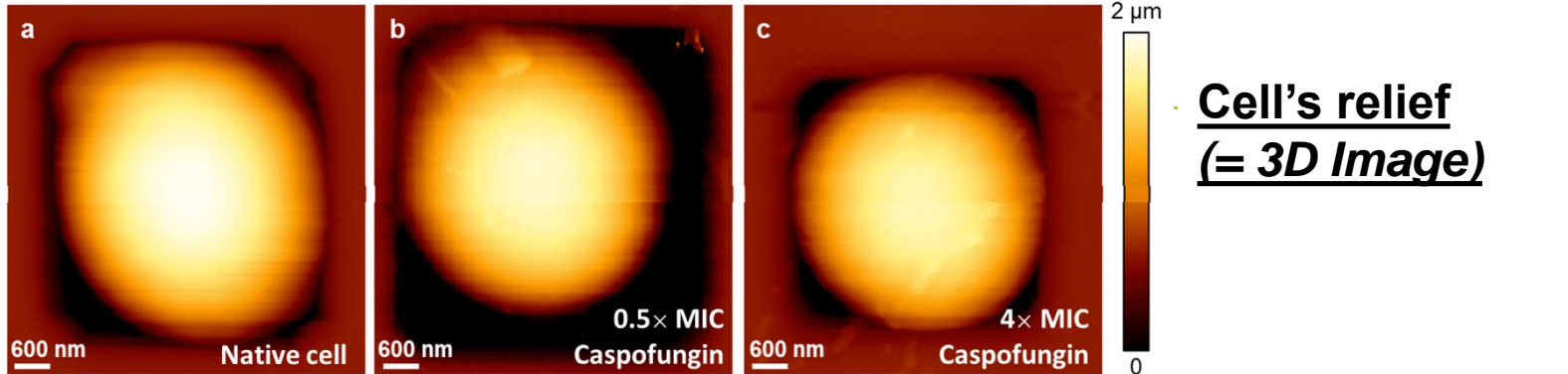
B, B' : 1 h at 42°C



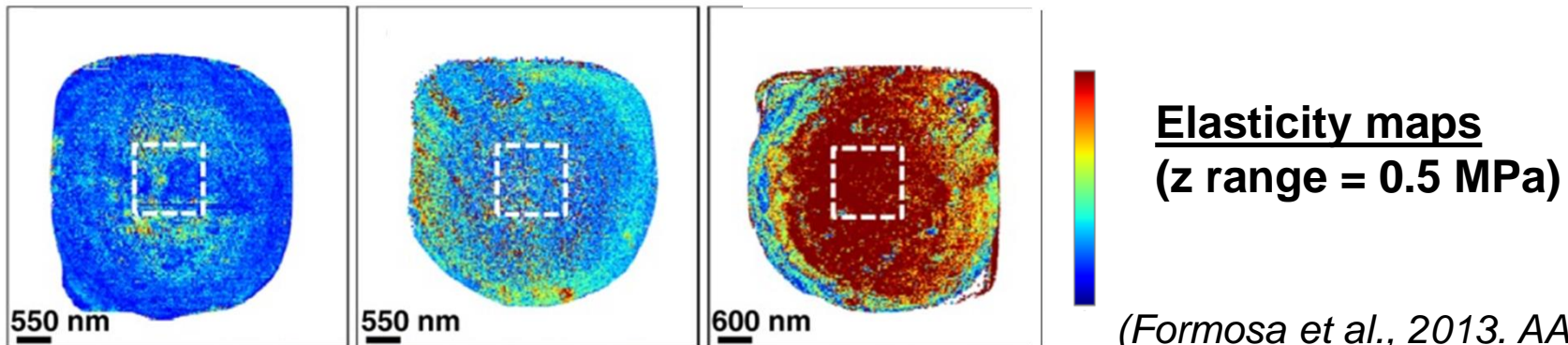
Killer toxin K9



Effect of Caspofungin on *C. albicans*



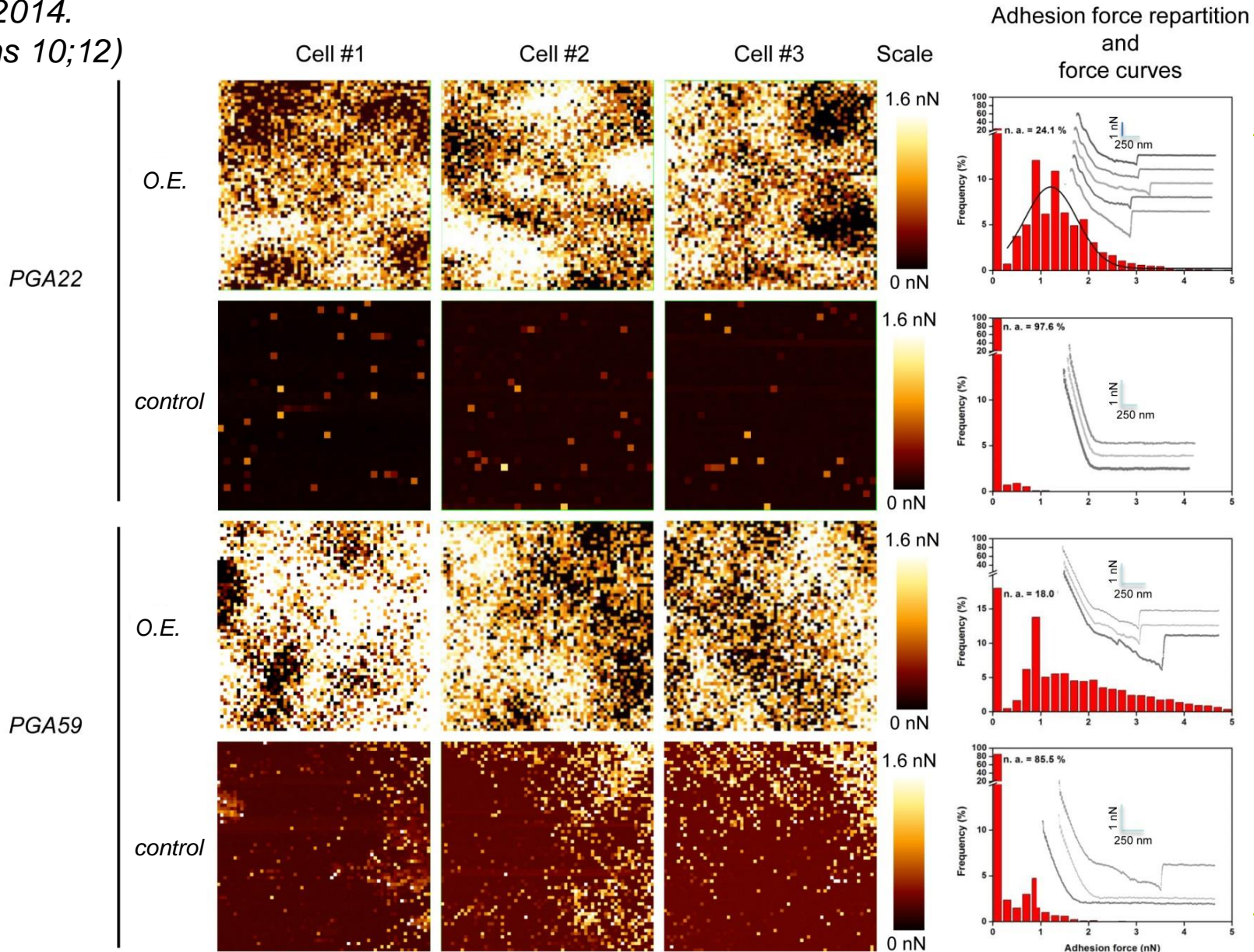
A low dose of Caspofungin (0.5xMIC) results in expression of adhesins on the cell surface !!!



(Formosa et al., 2013. AAC 57(8))

Single Molecule Force Spectroscopy (SMFS) by AFM to measure cellular Adhesion

(Cabral et al., 2014.
PLoS Pathogens 10;12)



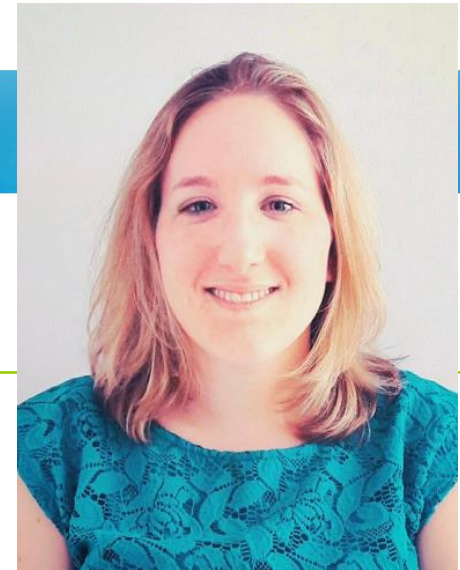
AFM allowed us to unravel the morphologic effect on yeast cells of Heat Shock, Osmotic Shock, exposure to toxins and drugs.

New projects include effect of mycotoxins on yeast cells, and molecular determinants of cell adhesion,

- at the molecular scale with AFM and Optical Tweezers,**
- at the population scale with the Sheer Flow Chamber.**



Etienne Dague,
LAAS CNRS



Marion Schiavone,
Lallemand, LISBP

Flavien Pillet,
IPBS

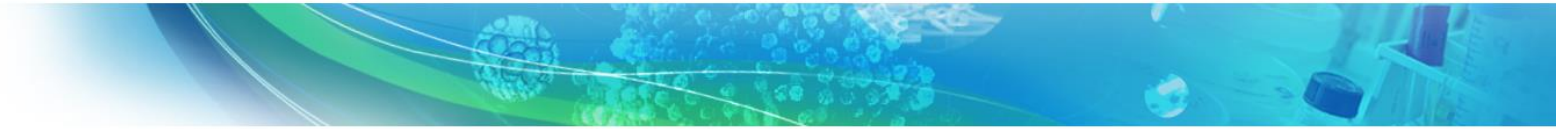


Cécile *Fantastique*
Formosa-Dague,
UCL Louvain la neuve

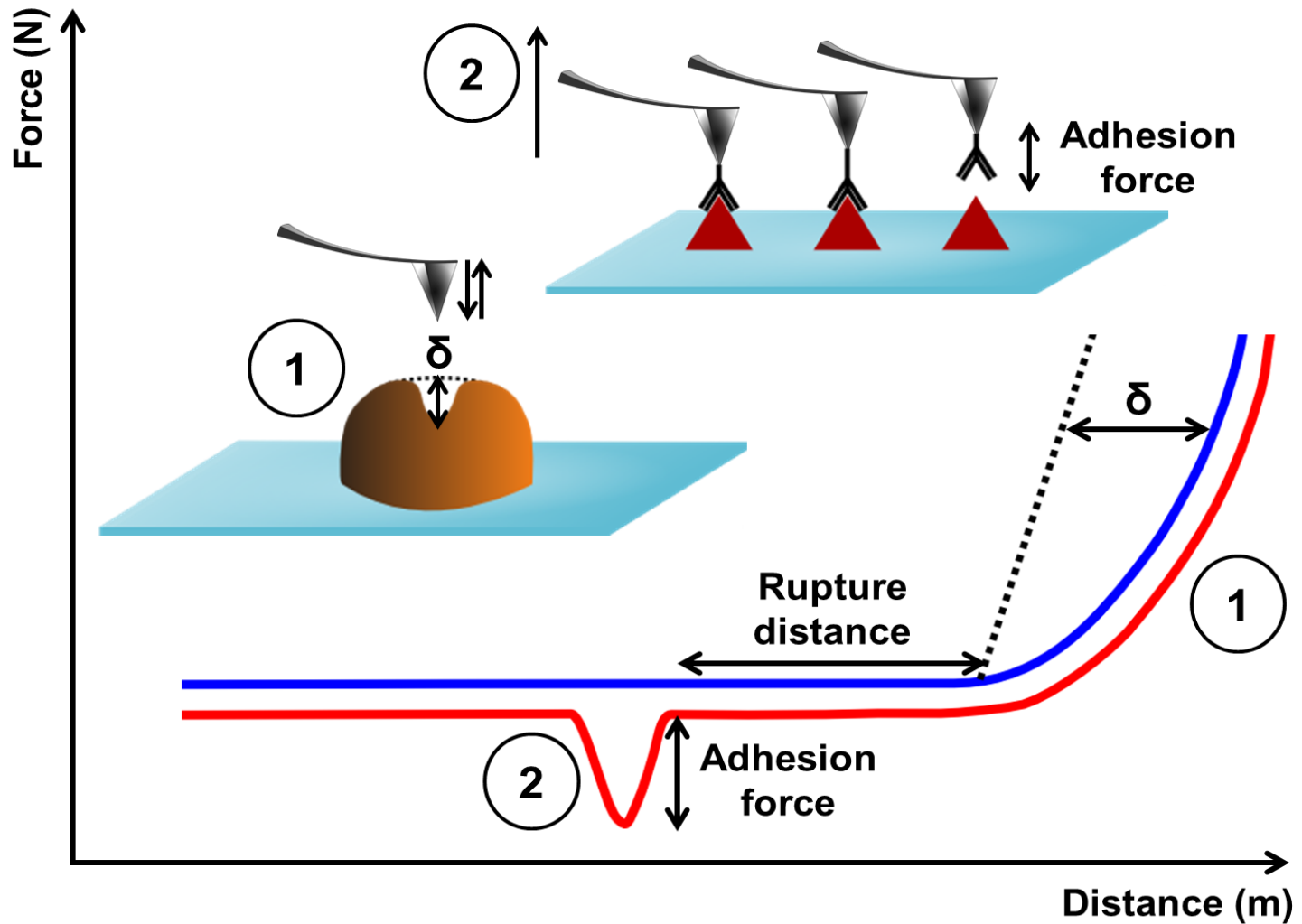
Pr Jean-Marie François,
INSA



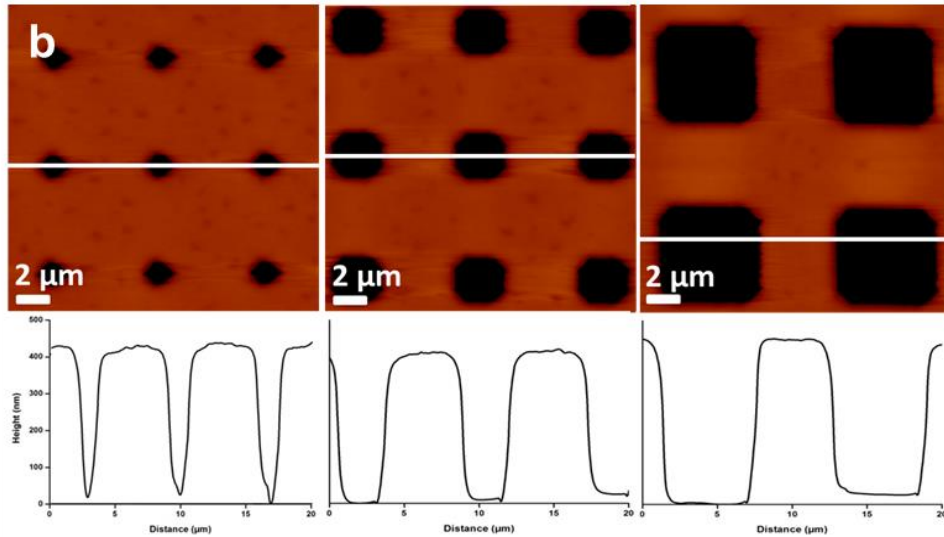
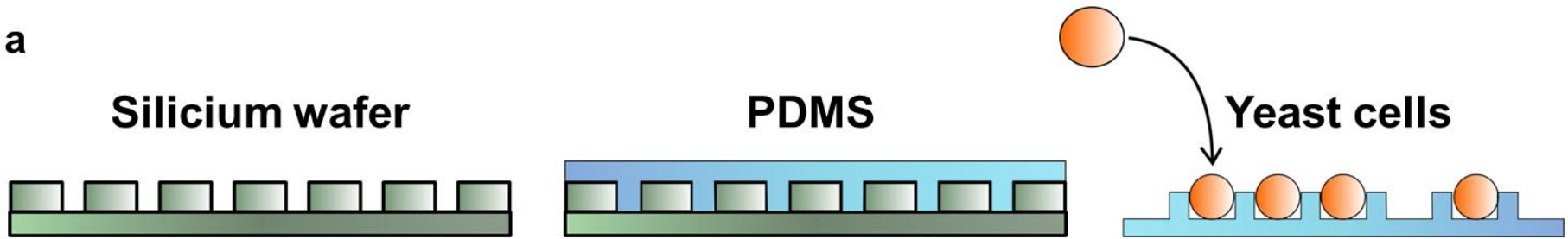
And...
THE FORCE !!!!!



Thank you for your attention !



a



c

