



HAL
open science

High-Level Heterologous Expression of Endo-1,4- β -Xylanase from *Penicillium citrinum* in *Pichia pastoris* X-33 Directed through Codon Optimization and Optimized Expression

Chanika Ouephanit, Nassapat Boonvitthya, Sophie Bozonnet, Warawut
Chulalaksananukul

► To cite this version:

Chanika Ouephanit, Nassapat Boonvitthya, Sophie Bozonnet, Warawut Chulalaksananukul. High-Level Heterologous Expression of Endo-1,4- β -Xylanase from *Penicillium citrinum* in *Pichia pastoris* X-33 Directed through Codon Optimization and Optimized Expression. *Molecules*, 2019, 24 (19), pp.3515. 10.3390/molecules24193515 . hal-02966690

HAL Id: hal-02966690

<https://hal.inrae.fr/hal-02966690v1>

Submitted on 14 Oct 2020

HAL is a multi-disciplinary open access archive for the deposit and dissemination of scientific research documents, whether they are published or not. The documents may come from teaching and research institutions in France or abroad, or from public or private research centers.

L'archive ouverte pluridisciplinaire **HAL**, est destinée au dépôt et à la diffusion de documents scientifiques de niveau recherche, publiés ou non, émanant des établissements d'enseignement et de recherche français ou étrangers, des laboratoires publics ou privés.

Article

High-Level Heterologous Expression of Endo-1,4- β -Xylanase from *Penicillium citrinum* in *Pichia pastoris* X-33 Directed through Codon Optimization and Optimized Expression

Chanika Ouephanit^{1,2,3}, Nassapat Boonvitthya⁴, Sophie Bozonnet⁵ and Warawut Chulalaksananukul^{2,3,*}

¹ Program in Biotechnology, Faculty of Science, Chulalongkorn University, Bangkok 10330, Thailand; chanika.gae@gmail.com

² Department of Botany, Faculty of Science, Chulalongkorn University, Bangkok 10330, Thailand

³ Biofuels by Biocatalysts Research Unit, Department of Botany, Faculty of Science, Chulalongkorn University, Bangkok 10330, Thailand

⁴ Innovation Institute, PTT Public Co., Ltd., Ayutthaya 13170, Thailand; nassapat.b@pttplc.com

⁵ LISBP, Université de Toulouse, CNRS, INRA, INSA, 31077 Toulouse, France; sophie.bozonnet@insa-toulouse.fr

* Correspondence: warawut.c@chula.ac.th; Tel.: +662-218-5482

Academic Editor: Jennifer Littlechild

Received: 29 August 2019; Accepted: 24 September 2019; Published: 27 September 2019



Abstract: Most common industrial xylanases are produced from filamentous fungi. In this study, the codon-optimized *xynA* gene encoding xylanase A from the fungus *Penicillium citrinum* was successfully synthesized and expressed in the yeast *Pichia pastoris*. The levels of secreted enzyme activity under the control of glyceraldehyde-3-phosphate dehydrogenase (P_{GAP}) and alcohol oxidase 1 (P_{AOX1}) promoters were compared. The Pc Xyn11A was produced as a soluble protein and the total xylanase activity under the control of P_{GAP} and P_{AOX1} was 34- and 193-fold, respectively, higher than that produced by the native strain of *P. citrinum*. The Pc Xyn11A produced under the control of the P_{AOX1} reached a maximum activity of 676 U/mL when induced with 1% (*v/v*) methanol every 24 h for 5 days. The xylanase was purified by ion exchange chromatography and then characterized. The enzyme was optimally active at 55 °C and pH 5.0 but stable over a broad pH range (3.0–9.0), retaining more than 80% of the original activity after 24 h or after pre-incubation at 40 °C for 1 h. With birchwood xylan as a substrate, Pc Xyn11A showed a $K_{m(app)}$ of 2.8 mg/mL, and a k_{cat} of 243 s⁻¹. The high level of secretion of Pc Xyn11A and its stability over a wide range of pH and moderate temperatures could make it useful for a variety of biotechnological applications.

Keywords: codon optimization; overexpression; *Penicillium citrinum*; *Pichia pastoris*; P_{GAP} ; P_{AOX1} ; xylanase A

1. Introduction

Plant cell walls are the main polysaccharide-containing renewable resource on earth, and are generated by photosynthesis [1]. Hemicellulose, a group of heteropolysaccharides, is the main polysaccharide component of plant cell walls, and in most plants, xylan (β -1,4-linked xylose residues with side branches of α -glucuronic acid and α -arabinofuranose) forms the major component and accounts for approximately one third of all renewable organic carbon on earth [2]. As xylan is a complex heteropolysaccharide, the complete conversion of the xylan requires the interaction of several main-chain- and side-chain-cleaving enzymes. Of these, xylanases (endo-1,4- β -xylanase, EC 3.2.1.8)

play a key role in xylan hydrolysis to xylooligosaccharides, which in turn can be converted to xylose by β -xylosidases [3].

Xylanases are widely used in various biotechnological applications. Examples include serving as bio-bleaching agents in the pulp and paper industry [4], improving digestibility and enhancing the efficiency of nutrient utilization in animal feed [5,6], increasing dough volume in the bakery industry [7], clarification of juices [8], improving the filtration rate and reduction of viscosity in the brewing industry [9], and releasing xylose that can be fermented to value products, such as biofuels and xylitol [10,11].

Xylanases are widespread in nature and have been reported in many microorganisms [2,12–15]. Most commercial xylanases are mainly produced by *Trichoderma* spp. and *Aspergillus* spp [16]. However, a number of xylanase-producing fungi have also been isolated from various sources, including soil, decaying woods, agricultural waste materials, and mangrove forests [17–20]. *Penicillium citrinum* appears to be an interesting xylanase-producing fungus since its xylanases are stable over a wide pH range [21], but there have been few other reports of xylanase from *P. citrinum* [22].

Heterologous gene expression by the methylotrophic yeast *Pichia pastoris* is a useful alternative for producing genetically engineered enzymes for research as well as industrial purposes [23]. It is considered to be non-toxicogenic and non-pathogenic, and several processes based on this organism have been classified as generally recognized as safe (GRAS) by the Food and Drug Administration (FDA, White Oak, MD, USA) [24]. Moreover, *P. pastoris*, as an excellent host for the production of recombinant proteins, provides additional benefits, such as a rapid growth rate to high cell density in inexpensive and non-complex culture medium, and ease of purification of heterologously-expressed recombinant proteins [25,26].

Codon optimization technology is a commercialized algorithm for heterologous gene expression. The DNA sequence used to encode a protein varies between different organisms. To obtain a high expression level in the new host, changing the foreign DNA sequence into that which matches the host requirements for expression is frequently required [27,28].

In this study, the *xynA* gene encoding a GH family-11 xylanase A from the fungus *P. citrinum* (Pc Xyn11A) strain FERM P-15944 was synthesized by optimization of codon usage and then cloning in the heterologous yeast host *P. pastoris*. A comparison of the expression level from a constitutive and inducible expression system, under the control of glyceraldehyde-3-phosphate dehydrogenase (P_{GAP}) and alcohol oxidase 1 (P_{AOX1}) promoters, respectively, was performed in order to improve the production and to characterize the Pc Xyn11A enzyme. This is the first report on the expression of an optimized codon *xynA* gene from *P. citrinum* in *P. pastoris*.

2. Results and Discussion

2.1. Construction of Expression Vectors, Transformation and Selection

The *xynA* gene from *P. citrinum* FERM P-15944 was codon optimized to enhance the translation efficiency, and was then expressed in *P. pastoris* X-33 to improve the expression level and study xylanase A. The mature protein-coding *xynA* gene consists of 573 nucleotides and encodes a protein of 190 amino acid residues. The optimized DNA sequence, aligned with the native gene, and the protein alignment, are shown in Figure 1, where due to the codon bias of *P. pastoris*, 138 codons were changed. However, the alignment clearly showed that both sequences encoded a protein with the same amino acid sequences. The codon usage bias was changed by upgrading the codon adaptation index (CAI) from 0.69 to 0.83, giving a smoother GC content curve and eliminating the negative cis-acting elements. The potential N- and O-glycosylation sites of Pc Xyn11A were predicted using the NetNGlyc 1.0 Server (<http://www.cbs.dtu.dk/services/NetNGlyc/>) and the NetOGlyc 4.0 Server (<http://www.cbs.dtu.dk/services/NetOGlyc-4.0/>), respectively. The results showed that there was no N-glycosylation, whilst there were four possible O-glycosylation sites.

DNA Alignment (Optimized Region)			
Optimized	1	ATGCCATCCCTTACTTCATTGTTTTTCATTTTCGCCCTTGCTTCAGGAGCCTTTTCAGCC	
Original	1	ATGCCGCTCTGACTTCGCTATTCTCGTTCTTCGCTTCGCTTCAGGCGCTTCAGTGT	
Optimized	61	ACAGCCGATTTGTCCAAGAGAGAGTCATATACTTCTCTCAACCGGTACTAGTAAOCCA	
Original	61	ACTGCTGATCTCTCGAAAAGAGAATCTTATACTTCAGCTCGACTGGAACTAGCAATGGC	
Optimized	121	TACTACTACTCTTTCTGGACTGATGGTCAAGGAGACATTACATATCCAAACGGTGCTGCC	
Original	121	TATTACTACTCTTTCTGGACGGATGGCCAGGGGATATCACCTACTCCAACGGTGCCGCT	
Optimized	181	GGAGAATACTCCGTTACTTGGTCAGGAGATGGAATTTTTCGCGCGTAAAGGATGGAAC	
Original	181	GGCGAGTACAGCGTGACCTGGTCTGGTGATGGAACTTCGTTGCTGGAAAGGGTTGGAAC	
Optimized	241	CCAGGTGGATCAAGAGAGGTTACATTCAAAGGTTCTTACAAACCTAATGGAACTCTAT	
Original	241	CCTGGTGGTAGCCGGGAGGTTACCTTCAAGGGCTCTTACAAACCTAATGGAACTCTAT	
Optimized	301	TTGTCAGTTTACGGTTGGACCCAAACCCACTTATCGAATTCATCATCGTGGAGACTTC	
Original	301	CTCTCCGCTACGGCTGGACTCAAAACCCCTGATCGAATTCATCATCGTGGAGACTTC	
Optimized	361	GGAACTACAAACCTAGTTCTGGTGCTACTAAGAAAGGAACAGTTACCAAGTATGGTCT	
Original	361	GGCACTTACAAACCTCCAGCGGCGCAACCAAGAAGGGCACTGTTACCAAGTATGGAACT	
Optimized	421	GTCTATGACATCTACACTTCGAAAGAGTTAATCAGCCATCAATCGAGGGTACTGCAACA	
Original	421	GTCTACGACATTTACACCAGTGGCGAGTCAATCAGCCTTCTATTGAGGGCACTGCGACT	
Optimized	481	TTCACCAATATTGGAGTGTAGACAGAACAAGAGATCCGAAGGTACAGTCACTACAGGA	
Original	481	TTCACCCAGTACTGGTCCGTTCTGTCAGAACAAGCGTTCGAGGGGAAGTGTACTACTGGA	
Optimized	541	AACCATTTCAACGCTTGGAAAGAAATTTGGGTATGGATCTTGGATCTTCAACTACATGAT	
Original	541	AATCACTTTAATGCATGGAAAAACCTGGGCATGGACCTTGGTTCGTTCAACTATATGAT	
Optimized	601	GTTGCCACTGAAGGTTATTACTCTCTGGTTCGCTGACATTACCGTTTCCTAA	
Original	601	GTTGCTACAGAGGGATATTATAGCAGTGGTCTGCTGATATTACTGTTAGCTAG	
Protein Alignment (Optimized Region)			
Optimized	1	MPSLTSLSFFALASGAFSATADLSKRESYSSSTGTSNGYYSFWTDGQGDITYSNGAA	
Original	1	MPSLTSLSFFALASGAFSATADLSKRESYSSSTGTSNGYYSFWTDGQGDITYSNGAA	
Optimized	61	GEYSVTWSGDGNFVAGKGNPGRSREVTFKGSYNPNNGNSYLSVYGTQNPFLIEFYIVEDF	
Original	61	GEYSVTWSGDGNFVAGKGNPGRSREVTFKGSYNPNNGNSYLSVYGTQNPFLIEFYIVEDF	
Optimized	121	GTYNPSSGATKKGTVTSDGVSVDIYTSERVNQPSIEGTATFTQYWSVRQNKRSSEGTVTG	
Original	121	GTYNPSSGATKKGTVTSDGVSVDIYTSERVNQPSIEGTATFTQYWSVRQNKRSSEGTVTG	
Optimized	181	NHFNWKNLGMDLGSFNYMIVATEGYSSGSADITVS*	
Original	181	NHFNWKNLGMDLGSFNYMIVATEGYSSGSADITVS*	

Figure 1. DNA alignment and protein alignment of the original and codon-optimized (for expression in *P. pastoris*) *xynA* gene from *P. citrinum* FERM P-15944.

Several studies have reported that heterologous protein production by GAP is better than AOX1system [29–32], on the other hand, others have reported that AOX1system is better for protein production [33–35], and so both were examined for the expression of Pc Xyn11A in *P. pastoris* in this study. Both the pGAPZ α A and pPICZ α A plasmids contain the native *Saccharomyces cerevisiae* α -factor secretion signal for extracellular production of protein and the Zeocin resistance gene for positive selection in *E. coli* and *P. pastoris*. The gene encoding the mature Pc Xyn11A was cloned in frame with the α -factor secretion signal under the control of P_{GAP} or P_{AOX1} to produce the recombinant expression plasmids pGAPZ α A-xynA and pPICZ α A-xynA, respectively. After transformation into *P. pastoris* X-33, the transformants were selected on a YPDS agar plate containing 100–2000 μ g/mL Zeocin.

For pGAPZ α A-xynA, YPDS agar plates containing 100 μ g/mL Zeocin showed the highest number of transformants, and this number decreased as the concentration of Zeocin increased, with no colonies growing at 2000 μ g/mL Zeocin. As P_{GAP} is a constitutively expressed promoter, the transformants were preliminary selected on YP with 0.2% Azo-xylan agar plates, where all transformants produced xylanase activity, as determined by the clear halo indicating that the substrate was hydrolysed and released soluble dye-labelled fragments around the colony. The negative control, untransformed

P. pastoris X-33, did not show any clear zone. For pPICZ α A-xynA, the transformants grew on all YPDS agar plates containing 100–2000 $\mu\text{g/mL}$ Zeocin, although the number of transformants decreased when the concentration of Zeocin was increased.

2.2. Expression of xynA-PC in *P. pastoris*

All transformants were cultured and monitored every 24 h for growth and xylanase activity in the supernatant. The wild type *P. pastoris* X-33 had no detectable extracellular xylanase activity. For the constitutive expression (P_{GAP}), the growth of all transformants reached a steady state after 48 h, whereas for the methanol-inducible expression (P_{AOX1}), all transformants were still in the growth phase after 5 days with induction with methanol every 24 h. The maximum xylanase activity of the pGAPZ α A-xynA transformants (Pp-gap-xynA) was from a clone picked on a YPDS agar plate containing 100 $\mu\text{g/mL}$ Zeocin. After 48 h of culture, the xylanase activity reached 119.5 $\mu\text{mol/mL/min}$, which was 34-fold higher than that of the native strain *P. citrinum* at 72 h [21].

For pPICZ α A-xynA-containing clones, in order to maximize the Pc Xyn11A production level, the methanol concentration was varied in BMMY medium during induction. The maximum xylanase activity (676 $\mu\text{mol/mL/min}$) of the pPICZ α A-xynA transformants was obtained from a clone selected on a YPDS agar plate containing 500 $\mu\text{g/mL}$ Zeocin and cultured with 1% (*v/v*) methanol in BMMY and induced with 1% (*v/v*) methanol every 24 h for 5 days, an activity that was 193-fold higher than that of the native fungus *P. citrinum* [21].

Besides the synthesis of Pc Xyn11A in *P. pastoris* X-33 in this study, the secretion of xylanase in *P. pastoris* strain GS115 using the integrative yeast expression vector pPIC3.5 has been reported previously [21]. However, the obtained xylanase activity was 7- and 39.7-fold lower than that for the Pc Xyn11A obtained in this study under the P_{GAP} and P_{AOX1} , respectively. Ohta et al. [36] tried to improve the xynA protein secretion in *E. coli* BL21(DE3) by fusion with the signal peptide of *Aureobasidium pullulans* XynI in place of the native one of xynA from *P. citrinum*. However, the obtained xylanase activity from this heterologous construct in *E. coli* was 7.1- and 40.2-fold lower than that of Pc Xyn11A under the P_{GAP} and P_{AOX1} , respectively, in this study. The xynA from *P. citrinum* has also been investigated in *Yarrowia lipolytica* to enhance the xynA protein production by fusion of the preproLIP2 secretion signals compared to the native one of xynA from *P. citrinum* [37]. Nevertheless, the obtained xylanase activity from Pc Xyn11A under the P_{AOX1} reported in this study was 17.7- and 3.7-fold higher than that of the recombinant XynA using native and preproLIP2 secretion signals, respectively (Table 1).

Table 1. Xylanase activity of XynA from *P. citrinum* in culture supernatant.

Microorganism	Activity ($\mu\text{mol/mL/min}$)	Comparison with The Native Strain (fold)	References
<i>P. citrinum</i> FERM P-15944 the native stain	3.5	-	[21]
<i>P. pastoris</i> GS115 + pPIC3.5	17	5	[21]
<i>E. coli</i> BL21(DE3) + pEXP401	16.8	5	[36]
<i>Y. lipolytica</i> zeta + JMP62UraTEF_natXynAPc	38	11	[37]
<i>Y. lipolytica</i> zeta + JMP62UraTEF_fusXynAPc	180.3	52	[37]
<i>P. pastoris</i> X-33 + pGAPZ α A-xynA	119.5	34	this study
<i>P. pastoris</i> X-33 + pPICZ α A-xynA	676	193	this study

2.3. Purification, SDS-PAGE and Zymography Analysis

The secreted Pc Xyn11A produced by the pPICZ α A-xynA transformant was chosen for purification and characterization. The purification of Pc Xyn11A is summarized in Table 2. After ultrafiltration, the concentrate still retained 95.3% of the initial activity, but this then dramatically decreased to 26.4% after anion exchange chromatography. Nevertheless, this protocol afforded a 34-fold purification of

the Pc Xyn11A enzyme from the culture supernatant and led to purification to apparent homogeneity with a final specific activity of 1259 U/mg. The molecular weight of the Pc Xyn11A enzyme was estimated by running the standard SDS-PAGE (without Azo-xylan) and was confirmed by running the zymogram (containing 1% Azo-xylan) at the same time. It was estimated to be 20 kDa, the same as that of the native fungal *P. citrinum* xylanase. Moreover, these results suggest that the Pc Xyn11A did not undergo post-translational glycosylation. However, post-translational glycosylation has previously been observed during recombinant expression of the *xynA* in *Y. lipolytica*, which required deglycosylation before purification [37]. The Pc Xyn11A in this study represented the major protein in the culture supernatant, and was resolved as a single band after anion exchange chromatography (Figure 2). These results support previous reports that *P. pastoris* secretes only very low levels of native proteins and the secreted heterologous protein constitutes the majority of the total protein in the medium [38,39], making it easier to recover the foreign secreted protein from the culture supernatant.

Table 2. Purification of extracellular Pc Xyn11A enzyme.

Step	Total Activity (U)	Total Protein (mg)	Specific Activity (U/mg)	Purification (fold)	Yield (%)
Culture supernatant	81118	2175.57	37.29	1.00	100
Ultrafiltration (10 kDa MWCO)	77305	533.25	144.97	3.89	95.3
Q Sepharose anion exchange	21425	17.02	1258.96	33.77	26.4

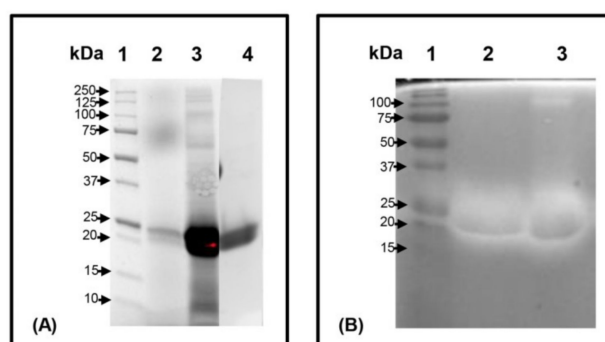


Figure 2. SDS-PAGE analysis and zymography of Pc Xyn11A produced in *P. pastoris* X-33. (A: SDS-PAGE), (B: Zymogram of xylanase). Lane 1: Molecular weights of the markers, Lane 2: culture supernatant, Lane 3: ultrafiltration (10 kDa MWCO) concentrated Pc Xyn11A, Lane 4: Q Sepharose anion exchange chromatography purified Pc Xyn11A.

2.4. Effect of pH and Temperature

With respect to the pH, the purified Pc Xyn11A enzyme showed an optimum activity at pH 5.0 (Figure 3), and a pH stability over a pH range of 3.0–9.0. It retained more than 80% of the original activity after 24 h at these pH values, but at pH 10.0, it decreased moderately to 70% and 50% after 2 and 27 h, respectively (Figure 4).

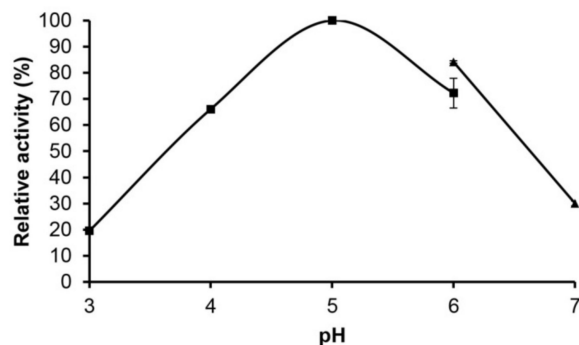


Figure 3. Effects of pH on the activity of purified Pc Xyn11A over a pH range of 3.0 to 7.0 under a standard enzyme assay condition. The buffers used were 60 mM citric acid–sodium citrate buffer (pH 3.0–6.0) (solid square) and 60 mM sodium phosphate buffer (pH 6.0–7.0) (solid triangle).

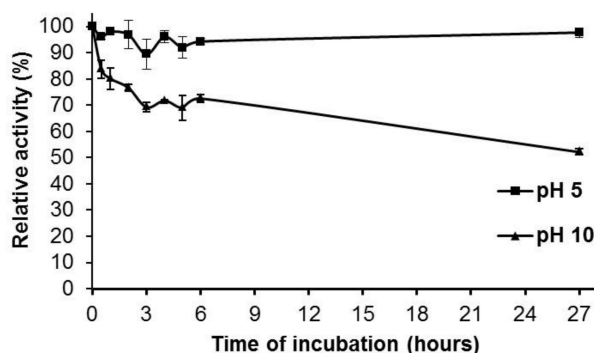


Figure 4. Stability of the purified Pc Xyn11A at pH 5.0 and 10.0 at room temperature measured under a standard enzyme assay condition.

For the effect of temperature on the enzymatic activity and thermostability of the purified Pc Xyn11A, the xylanase activity at pH 5.0 increased from about 60% maximum at 40 °C to the maximum (100%) at 55 °C, designated as the optimum temperature for the enzyme activity, and then decreased to about 70% activity at 60 °C (Figure 5). The enzyme remained stable up to 40 °C, retaining around 80% of the original activity after a 1 h incubation, and then gradually declined to 20% after 6 h (Figure 6).

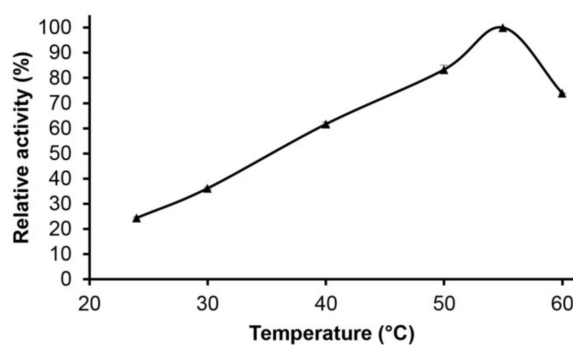


Figure 5. Effect of temperature on activity of purified Pc Xyn11A under a standard enzyme assay condition.

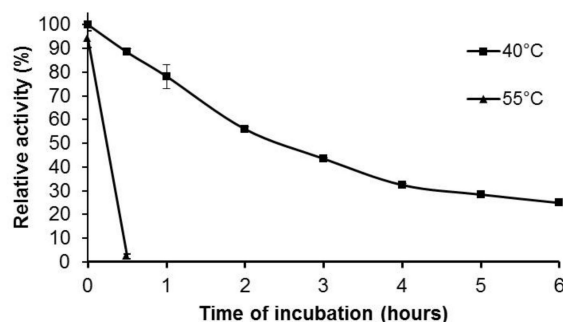


Figure 6. Thermal stability of purified Pc Xyn11A at 40 and 55 °C measured under a standard enzyme assay condition.

Endoxylanases previously reported from fungal sources usually show an optimum pH in the range of 4.0–7.0 and an optimum temperature between 40 °C and 60 °C [40,41]. The Pc Xyn11A in this study showed a similar temperature and pH optima to the xylanases from the native strain *P. citrinum* [21], *Aspergillus awamori* VTCC-F312 [42] and *P. citrinum* produced in *Y. lipolytica* [37]. However, the pH stability of Pc Xyn11A in this study at pH 10.0 retained around 50% of the original activity after a 27 h incubation, which was more activity than when heterologously expressed in *Y. lipolytica* at pH 10.0 (30% after 24 h). This could be due to the post-translational modifications. Glycosylation is one of the most important post-translational modifications in eukaryotic cells, with significant effects on protein folding, conformation, activity and stability. The modification of proteins through enzymatic glycosylation is controlled by factors that differ greatly among cell types and species [43,44]. Moreover, the pH stability of Pc Xyn11A in this study was much broader than those reported from *A. awamori* VTCC-F312 (pH 4.0–8.0) [42], *Achaetomium* sp. Xz-8 (pH 5.0–10.0) [9], *Aspergillus fumigatus* MKU1 (pH 4.0–8.0) [45], *Bacillus pumilus* ARA (pH 5.8–8.2) [46], *Bacillus* sp. GA1(6) (pH 4.0–7.0) [47] and *Penicillium oxalicum* (pH 3.0–5.0) [48]. These results show that the purified Pc Xyn11A enzyme of this study was stable for a long time over a wide pH range, and so could potentially be applied to many industries. For example, in the bakery industry, xylanase produced from *Aspergillus niger* was used to improve dough characteristics and bread quality [49]. It could be especially useful for industries that need xylanase that is stable over a wide pH range, such as clarification of fruit juice [8].

2.5. Kinetic Parameters

The Pc Xyn11A kinetics were evaluated at 40 °C and a pH of 5.0 using nine different birchwood xylan (substrate) concentrations. The $K_{m(\text{app})}$, V_{max} and k_{cat} were calculated to be 2.8 mg/mL, 310.7 $\mu\text{mol}/\text{min}$ and 243 s^{-1} , respectively. The Pc Xyn11A k_{cat} was higher than that previously reported for some other xylanases, such as those from *Malbranchea cinnamomea* and *Bacillus cellululosilyticus* with k_{cat} values of 4.26 and 165.8 s^{-1} , respectively [50,51]. In comparison to other family 11 β -1,4 xylanases, the $K_{m(\text{app})}$ of the Pc Xyn11A of this study was lower than that of the native *Aspergillus niger* xylanase (Native XylA), recombinant *A. niger* xylanase produced in *Pichia pastoris* (reXylA), *Nonomuraea flexuosa* xylanase produced in *Trichoderma reesei* (Nf Xyn11A) and *P. citrinum* xylanase produced in *Y. lipolytica* (re-xynA) [37,52,53], as shown in Table 3. The difference in $K_{m(\text{app})}$ of Pc Xyn11A expressed in *P. pastoris* and *Y. lipolytica* could be due to the difference in glycosylation, as glycans can alter the substrate recognition, specificity and binding affinity, and turnover rates [54]. The lower $K_{m(\text{app})}$ of Pc Xyn11A in this study indicated that it had a higher affinity for birchwood xylan. The Pc Xyn11A also had a higher turnover number (k_{cat}) and catalytic efficiency ($k_{\text{cat}}/K_{m(\text{app})}$), indicating that it has higher catalytic activity.

Table 3. Comparison of enzymatic properties between Pc Xyn11A and those of other family 11 β -1,4 xylanases.^a

Enzyme	$K_m(\text{app})$ (mg/mL)	k_{cat} (s^{-1})	$k_{\text{cat}}/K_m(\text{app})$ (mL/mg/s)	References
Native XylA ^b	6.8	85	12.5	[52]
reXylA ^c	12.6	150	11.9	[52]
Nf Xyn11A ^d	6	136.9	22.8	[53]
re-XynA ^e	5.2	245	47.1	[37]
Pc Xyn11A	2.8	243	86.8	this study

^a Kinetic values were analyzed using birchwood xylan as substrate. ^b Native *Aspergillus niger* xylanase. ^c Recombinant *Aspergillus niger* xylanase produced in *Pichia pastoris*. ^d *Nonomuraea flexuosa* xylanase produced in *Trichoderma reesei*. ^e *Penicillium citrinum* xylanase produced in *Yarrowia lipolytica*.

3. Materials and Methods

3.1. Gene, Plasmids, Strains, Culture Conditions and Materials

The *xynA* gene from *P. citrinum* FERM P-15944 was synthesized with codon optimization for expression in *P. pastoris* based on the nucleotide database (GenBank: accession no. AB198065.1) [21] and introduced into the pUC57-Kan vector by GenScript (Piscataway, NJ, USA). The *P. pastoris* expression kit, including the *P. pastoris* strain X-33, constitutive expression vector (pGAPZ α A), methanol-inducible expression vector (pPICZ α A) and Zeocin were all from Invitrogen (Carlsbad, CA, USA). All restriction enzymes and Phusion High-Fidelity DNA polymerase were from New England BioLabs (Beverly, MA, USA). Birchwood xylan was from Sigma-Aldrich (St Louis, MO, USA), Azo-xylan was from Megazyme (Wicklow, Ireland).

Pichia pastoris was cultured in YPD medium 1% (*w/v*) yeast extract, 2% (*w/v*) bacteriological peptone and 2% (*w/v*) dextrose at 30 °C with shaking at 200 rpm. The transformants were selected on YPDS plates (YPD with 1 M sorbitol) containing 100–2000 $\mu\text{g/mL}$ Zeocin. The pGAPZ α A transformants were chosen for preliminary selection on YP (YPD without dextrose) with 0.2% (*w/v*) Azo-xylan.

Escherichia coli DH5 α (Gibco) was used for vector propagation and was grown in a Luria-Bertani (LB) medium at 37 °C with either kanamycin (50 $\mu\text{g/mL}$) to select for pUC57-Kan or Zeocin (25 $\mu\text{g/mL}$) to select for pGAPZ α A and pPICZ α A transformants.

3.2. Construction of Expression Plasmids

The synthetic *xynA* gene was amplified without a signal peptide or stop codon from pUC57-Kan containing the optimized codon *xynA* gene by PCR using the following specific primers: *xynA*-F (5'-GCGGTACC GAGTCATATACTTCTTCCTCAACC-3'), and *xynA*-R (5'-GAGCGGCCGC GGAAACGGTAATGTCAGCG-3'). *Kpn*I-HF and *Not*I-HF restriction sites (underlined) were added to the forward and reverse primers, respectively. The PCR was thermal cycled at 98 °C for 30 s followed by 30 cycles of 98 °C for 10 s, 54.1 °C for 30 s and 72 °C for 20 s, and then a final 72 °C for 10 min. The amplified fragments were purified and then digested with *Kpn*I-HF/*Not*I-HF before cloning into the pGAPZ α A or pPICZ α A expression vectors predigested with the same restriction enzymes to yield the pGAPZ α A-*xynA* and pPICZ α A-*xynA* plasmids, respectively. The plasmids were transformed into *E. coli* DH5 α competent cells and selected by plating on low-salt LB agar plates (1% (*w/v*) tryptone, 0.5% (*w/v*) yeast extract, 0.5% (*w/v*) NaCl, 1.5% (*w/v*) agar) containing 25 $\mu\text{g/mL}$ Zeocin to select for the presence of the recombinant plasmid and isolate single colonies. The insertion was verified by double restriction enzyme digestion and commercial DNA sequencing (Pacific Science, Bangkok, Thailand).

3.3. Yeast Transformation and Selection

The pGAPZ α A-*xynA* and pPICZ α A-*xynA* plasmids were linearized with *Avr*II and *Pme*I, respectively, for integration into *P. pastoris* genome. Each linearized DNA was transformed into *P. pastoris* strain X-33 using the lithium acetate and dithiothreitol method by electroporation [55].

Briefly, about 10 µg linearized plasmid combined with 25 µg salmon sperm DNA (Invitrogen) was used to transform 90 µL competent *P. pastoris* X-33 cells using a Gene Pulser Xcell (Bio-Rad) and immediately recovered in 1 mL of 1 M sorbitol for 2 h at 30 °C. Transformants were selected on YPDS agar plates containing 100–2000 µg/mL Zeocin. Transformants under the control of P_{GAP} were chosen for preliminary selection on YP agar plates containing 0.2% (*w/v*) Azo-xylan.

3.4. Expression of Recombinant *xynA-PC* in *P. pastoris*

For constitutive expression (P_{GAP}), *P. pastoris* transformants were cultured in YPD medium for 4 days, whereas for methanol-inducible expression (P_{AOX1}), *P. pastoris* transformants were grown using buffered glycerol-complex medium (BMGY: 1% (*w/v*) yeast extract, 2% (*w/v*) peptone, 100 mM $\text{KH}_2\text{PO}_4/\text{KOH}$ buffer (pH 6.0), 1.34% (*w/v*) Yeast Nitrogen Base, $4 \times 10^{-5}\%$ (*w/v*) biotin, and 1% (*v/v*) glycerol) and buffered methanol-complex medium (BMMY: 1% (*w/v*) yeast extract, 2% (*w/v*) peptone, 100 mM $\text{KH}_2\text{PO}_4/\text{KOH}$ buffer (pH 6.0), 1.34% (*w/v*) Yeast Nitrogen Base, $4 \times 10^{-5}\%$ (*w/v*) biotin, and 0.5% (*v/v*) methanol). Absolute methanol was added every 24 h to maintain induction for 5 days, at an initial final concentration of 0.5–1% (*v/v*) in BMMY medium, and then supplemented at 0.5–3% (*v/v*) for the daily induction to optimize recombinant xylanase (Pc Xyn11A) production. All enzyme productions were performed in a baffled shaker flask at 30 °C with constant shaking at 200 rpm. The culture supernatant was collected at periodic intervals to analyze the expression level to determine the optimal time for post-induction harvest. When the maximum xylanase activity was observed, the culture supernatant was collected to analyze the production level and to allow purification and characterization of the produced Pc Xyn11A.

3.5. Xylanase Activity Assay and Protein Determination

The xylanase activity was assayed by following the release of reducing sugars from xylan. The reaction mixture consisted of 0.5 mL of 4% (*w/v*) birchwood xylan in deionized water, 0.4 mL of 0.15 M acetate buffer (pH 5.0), and 0.1 mL of suitably diluted enzyme. Reactions were incubated at 50 °C for 5 min and aliquots (75 µL) were taken every minute. The reaction was stopped by transferring it into an equal amount of DNS (3,5-dinitrosalicylic acid) before boiling for 5 min [56]. After cooling, 0.75 mL deionized water was added and the amount of soluble reducing sugars was then measured by monitoring the absorbance at 540 nm with a spectrophotometer. One unit (U) of xylanase activity was defined as the amount of enzyme that liberates 1 µmol of xylose equivalents per min per mL under the assay condition. Protein concentration was estimated using the DC Protein Assay (Bio-Rad) with bovine serum albumin (BSA) as a standard.

3.6. Purification of the Pc Xyn11A Enzyme

All purification steps were performed at 4 °C. Yeast cells from liquid cultures were sedimented by centrifugation at $4500\times g$ for 10 min. The supernatant was concentrated and exchanged against 20 mM acetate buffer (pH 5.5) by ultrafiltration through regenerated cellulose membrane ultra-centrifugal filters with a 10 kDa molecular weight cut-off (MWCO; Amicon) and loaded onto a HiLoad™ 16/10 Q Sepharose High Performance column (GE Healthcare Life Sciences, Uppsala, Sweden) previously equilibrated with 20 mM acetate buffer (pH 5.5). The adsorbed proteins were eluted with a linear gradient of 0–0.6 M NaCl in the same buffer at a flow rate of 2 mL/min.

3.7. SDS-PAGE and Zymography Analysis

The MWCO concentrated culture supernatant (crude Pc Xyn11A preparation) and purified Pc Xyn11A were subjected to sodium dodecyl sulfate polyacrylamide gel electrophoresis (SDS-PAGE) using Mini-Protean® TGX Stain-Free™ gels to determine the molecular weight and confirm the apparent purity (size homogeneity) of the enzyme. The zymographic analysis for xylanase activity was performed on 10% polyacrylamide gel containing 1% (*w/v*) Azo-xylan as substrate. The electrophoresed gel was soaked in 25% (*v/v*) isopropanol to remove the SDS and renature the protein and then washed

four times with 60 mM acetate buffer pH 5.0 for 30 min each, before being incubated in the same buffer at room temperature overnight. The activity bands were observed as clear and colorless areas.

3.8. Effect of pH and Temperature on Xylanase Activity and Stability

The effect of pH on the xylanase activity of the purified Pc Xyn11A was determined within the pH range of 3.0–7.0 using xylan as a substrate in citric acid–sodium citrate buffer (pH 3.0–6.0) and sodium phosphate buffer (pH 6.0–7.0) at 50 °C, whilst the optimum temperature of the purified Pc Xyn11A was evaluated at 25 °C (room temperature) to 60 °C using xylan as the substrate at the determined pH optimum.

The effect of pH on the purified Pc Xyn11A xylanase stability was evaluated by measurement of the residual activity after 24 h pre-incubation at 25 °C in 60 mM of the appropriate buffers: citric acid–sodium citrate buffer (pH 3.0–6.0), sodium phosphate buffer (pH 6.0–8.0) and sodium carbonate (pH 9.0–10.0), whilst the thermostability was determined after pre-incubation in citric acid–sodium citrate buffer (pH 5.0) at 40–60 °C. Each data point represents the mean of three independent replicates and the error bars indicate the standard deviation.

3.9. Kinetic Parameters

The kinetic parameters (K_m , k_{cat} and V_{max}) of the purified Pc Xyn11A enzyme were determined using birchwood xylan at 0.1–2% (*w/v*) as the substrate in 60 mM citric acid–sodium citrate buffer at pH 5.0, 40 °C for 10 min. The kinetic analysis was then performed using Michaelis–Menten and Lineweaver–Berk plots. Each data represents the mean of three independent experiments.

4. Conclusions

This is the first report on the expression of the codon-optimized *xynA* gene from *P. citrinum* FERM P-15944 in *P. pastoris* X-33. The data obtained in the present study showed that *P. pastoris* X-33 is a suitable host for expression and secretion of high levels of Pc Xyn11A. In this study, the codon-optimized *xynA* gene, encoding xylanase A, was successfully cloned and overexpressed in *P. pastoris* using the native *Saccharomyces cerevisiae* α -factor secretion signal under the control of the strong constitutive (P_{GAP}) or methanol-inducible (P_{AOX1}) promoters. Both promoters demonstrated efficient expression of the codon optimized *xynA* gene. The total xylanase activity produced with the P_{AOX1} was 193-fold higher than with the native *P. citrinum* strain. The high level of secretion and the stability over a wide range of pH and at moderate temperatures of the Pc Xyn11A make it potentially useful for a variety of biotechnological applications.

Author Contributions: Conceptualization and methodology, C.O., N.B., S.B. and W.C.; investigation, C.O.; writing—original draft preparation, C.O. and W.C.; writing—review and editing, N.B., S.B. and W.C.; funding acquisition, W.C.

Funding: This research was funded by the Thailand Research Fund through the RGJ (Royal Golden Jubilee Ph.D. Program Grant PHD/0073/2552, Bangkok, Thailand), PTT (Plc.) and LISBP/INSA, Toulouse, France.

Acknowledgments: We thank the Office of Research Affairs, Chulalongkorn University for help with English editing and proofreading.

Conflicts of Interest: The authors declare no conflicts of interest.

References

1. Loqué, D.; Scheller, H.V.; Pauly, M. Engineering of plant cell walls for enhanced biofuel production. *Curr. Opin. Plant Biol.* **2015**, *25*, 151–161. [[CrossRef](#)] [[PubMed](#)]
2. Polizeli, M.L.T.M.; Rizzatti, A.C.S.; Monti, R.; Terenzi, H.F.; Jorge, J.A.; Amorim, D.S. Xylanases from fungi: Properties and industrial applications. *Appl. Microbiol. Biotechnol.* **2005**, *67*, 577–591. [[CrossRef](#)] [[PubMed](#)]
3. Moreira, L.R.; Filho, E.X. Insights into the mechanism of enzymatic hydrolysis of xylan. *Appl. Microbiol. Biotechnol.* **2016**, *100*, 5205–5214. [[CrossRef](#)] [[PubMed](#)]

4. Walia, A.; Guleria, S.; Mehta, P.; Chauhan, A.; Parkash, J. Microbial xylanases and their industrial application in pulp and paper biobleaching: A review. *3 Biotech* **2017**, *7*, 11. [[CrossRef](#)] [[PubMed](#)]
5. Yu, X.; Han, J.; Li, H.; Zhang, Y.; Feng, J. The effect of enzymes on release of trace elements in feedstuffs based on in vitro digestion model for monogastric livestock. *J. Anim. Sci. Biotechnol.* **2018**, *9*, 73. [[CrossRef](#)] [[PubMed](#)]
6. Maas, R.M.; Verdegem, M.C.; Dersjant-Li, Y.; Schrama, J.W. The effect of phytase, xylanase and their combination on growth performance and nutrient utilization in Nile tilapia. *Aquaculture* **2018**, *487*, 7–14. [[CrossRef](#)]
7. Adigüzel, A.O.; Tunçer, M. Production, characterization and application of a xylanase from *Streptomyces* sp. AOA40 in fruit juice and bakery industries. *Food Biotechnol.* **2016**, *30*, 189–218. [[CrossRef](#)]
8. Rosmine, E.; Sainjan, N.C.; Silvester, R.; Alikkunju, A.; Varghese, S.A. Statistical optimisation of xylanase production by estuarine *Streptomyces* sp. and its application in clarification of fruit juice. *J. Genet. Eng. Biotechnol.* **2017**, *15*, 393–401. [[CrossRef](#)]
9. Zhao, L.; Meng, K.; Bai, Y.; Shi, P.; Huang, H.; Luo, H.; Wang, Y.; Yang, P.; Song, W.; Yao, B. Two family 11 xylanases from *Achaetomium* sp. Xz-8 with high catalytic efficiency and application potentials in the brewing industry. *J. Agric. Food Chem.* **2013**, *61*, 6880–6889. [[CrossRef](#)]
10. Sena, L.M.; Morais, C.G.; Lopes, M.R.; Santos, R.O.; Uetanabaro, A.P.; Morais, P.B.; Vital, M.J.; de Morais, M.A., Jr.; Lachance, M.A.; Rosa, C.A. D-Xylose fermentation, xylitol production and xylanase activities by seven new species of *Sugiyamaella*. *Antonie Van Leeuwenhoek* **2017**, *110*, 53–67. [[CrossRef](#)]
11. Uday, U.S.P.; Choudhury, P.; Bandyopadhyay, T.K.; Bhunia, B. Classification, mode of action and production strategy of xylanase and its application for biofuel production from water hyacinth. *Int. J. Biol. Macromol.* **2016**, *82*, 1041–1054. [[CrossRef](#)] [[PubMed](#)]
12. Chakdar, H.; Kumar, M.; Pandiyan, K.; Singh, A.; Nanjappan, K.; Kashyap, P.L.; Srivastava, A.K. Bacterial xylanases: Biology to biotechnology. *3 Biotech* **2016**, *6*, 150. [[CrossRef](#)] [[PubMed](#)]
13. Shi, W.; Ding, S.Y.; Yuan, J.S. Comparison of Insect Gut Cellulase and Xylanase Activity Across Different Insect Species with Distinct Food Sources. *Bioenerg. Res.* **2011**, *4*, 1–10. [[CrossRef](#)]
14. Lara, C.A.; Santos, R.O.; Cadete, R.M.; Ferreira, C.; Marques, S.; Gírio, F.; Oliveira, E.S.; Rosa, C.A.; Fonseca, C. Identification and characterisation of xylanolytic yeasts isolated from decaying wood and sugarcane bagasse in Brazil. *Antonie Van Leeuwenhoek* **2014**, *105*, 1107–1119. [[CrossRef](#)] [[PubMed](#)]
15. Suda, C.N.K.; Buckeridge, M.S.; Giorgini, J.F. Cell wall hydrolases in the seeds of *Euphorbia heterophylla* L. during germination and early seedling development. *Braz. J. Plant Physiol.* **2003**, *15*, 135–143. [[CrossRef](#)]
16. Lu, F.; Lu, M.; Lu, Z.; Bie, X.; Zhao, H.; Wang, Y. Purification and characterization of xylanase from *Aspergillus ficuum* AF-98. *Bioresour. Technol.* **2008**, *99*, 5938–5941. [[CrossRef](#)]
17. Wu, J.; Qiu, C.; Ren, Y.; Yan, R.; Ye, X.; Wang, G. Novel Salt-Tolerant Xylanase from a Mangrove-Isolated Fungus *Phoma* sp. MF13 and Its Application in Chinese Steamed Bread. *ACS Omega* **2018**, *3*, 3708–3716. [[CrossRef](#)]
18. Roy, S.; Dutta, T.; Sarkar, T.S.; Ghosh, S. Novel xylanases from *Simplicillium obclavatum* MTCC 9604: Comparative analysis of production, purification and characterization of enzyme from submerged and solid state fermentation. *Springerplus* **2013**, *2*, 382. [[CrossRef](#)]
19. Guan, G.Q.; Zhao, P.X.; Zhao, J.; Wang, M.J.; Huo, S.H.; Cui, F.J.; Jiang, J.X. Production and Partial Characterization of an Alkaline Xylanase from a Novel Fungus *Cladosporium oxysporum*. *Biomed. Res. Int.* **2016**, *2016*, 4575024. [[CrossRef](#)]
20. Raghukumar, C.; Muraleedharan, U.; Gaud, V.R.; Mishra, R. Xylanases of marine fungi of potential use for biobleaching of paper pulp. *J. Ind. Microbiol. Biotechnol.* **2004**, *31*, 433–441. [[CrossRef](#)]
21. Tanaka, H.; Nakamura, T.; Hayashi, S.; Ohta, K. Purification and properties of an extracellular endo-1,4-beta-xylanase from *Penicillium citrinum* and characterization of the encoding gene. *J. Biosci. Bioeng.* **2005**, *100*, 623–630. [[CrossRef](#)] [[PubMed](#)]
22. Bagewadi, Z.K.; Mulla, S.I.; Mulla, Y.; Ninnekar, H.Z. Xylanase production from *Penicillium citrinum* isolate HZN13 using response surface methodology and characterization of immobilized xylanase on glutaraldehyde-activated calcium-alginate beads. *3 Biotech* **2016**, *6*, 164. [[CrossRef](#)] [[PubMed](#)]
23. Kang, Z.; Huang, H.; Zhang, Y.; Du, G.; Chen, J. Recent advances of molecular toolbox construction expand *Pichia pastoris* in synthetic biology applications. *World J. Microbiol. Biotechnol.* **2017**, *33*, 1–8. [[CrossRef](#)] [[PubMed](#)]

24. Schwarzzhans, J.P.; Luttermann, T.; Geier, M.; Kalinowski, J.; Friehs, K. Towards systems metabolic engineering in *Pichia pastoris*. *Biotechnol. Adv.* **2017**, *35*, 681–710. [[CrossRef](#)] [[PubMed](#)]
25. Weinacker, D.; Rabert, C.; Zepeda, A.B.; Figueroa, C.A.; Pessoa, A.; Farías, J.G. Applications of recombinant *Pichia pastoris* in the healthcare industry. *Braz. J. Microbiol.* **2013**, *44*, 1043–1048. [[CrossRef](#)] [[PubMed](#)]
26. Spohner, S.C.; Müller, H.; Quitmann, H.; Czermak, P. Expression of enzymes for the usage in food and feed industry with *Pichia pastoris*. *J. Biotechnol.* **2015**, *202*, 118–134. [[CrossRef](#)]
27. Elena, C.; Ravasi, P.; Castelli, M.E.; Peiró, S.; Menzella, H.G. Expression of codon optimized genes in microbial systems: Current industrial applications and perspectives. *Front. Microbiol.* **2014**, *5*, 21. [[CrossRef](#)] [[PubMed](#)]
28. Liu, B.; Kong, Q.; Zhang, D.; Yan, L. Codon optimization significantly enhanced the expression of human 37-kDa iLRP in *Escherichia coli*. *3 Biotech* **2018**, *8*, 210. [[CrossRef](#)]
29. Waterham, H.R.; Digan, M.E.; Koutz, P.J.; Lair, S.V.; Cregg, J.M. Isolation of the *Pichia pastoris* glyceraldehyde-3-phosphate dehydrogenase gene and regulation and use of its promoter. *Gene* **1997**, *186*, 37–44. [[CrossRef](#)]
30. Döring, F.; Klapper, M.; Theis, S.; Daniel, H. Use of the glyceraldehyde-3-phosphate dehydrogenase promoter for production of functional mammalian membrane transport proteins in the yeast *Pichia pastoris*. *Biochem. Biophys. Res. Commun.* **1998**, *250*, 531–535. [[CrossRef](#)]
31. Delroisse, J.M.; Dannau, M.; Gilsoul, J.J.; El Mejdoub, T.; Destain, J.; Portetelle, D.; Thonart, P.; Haubruge, E.; Vandenberghe, M. Expression of a synthetic gene encoding a *Tribolium castaneum* carboxylesterase in *Pichia pastoris*. *Protein Expr. Purif.* **2005**, *42*, 286–294. [[CrossRef](#)]
32. Menendez, J.; Hernandez, L.; Banguela, A.; Pais, J. Functional production and secretion of the *Gluconoacetobacter diazotrophicus* fructose-releasing exo-levanase (LsdB) in *Pichia pastoris*. *Enz. Microb. Technol.* **2004**, *34*, 446–452. [[CrossRef](#)]
33. Mulder, K.C.; de Lima, L.A.; Aguiar, P.S.; Carneiro, F.C.; Franco, O.L.; Dias, S.C.; Parachin, N.S. Production of a modified peptide clavarin in *Pichia pastoris*: Cloning, expression, purification and in vitro activities. *AMB Express* **2015**, *5*, 129. [[CrossRef](#)]
34. Kim, S.J.; Lee, J.A.; Kim, Y.H.; Song, B.K. Optimization of the functional expression of *Coprinus cinereus* peroxidase in *Pichia pastoris* by varying the host and promoter. *J. Microbiol. Biotechnol.* **2009**, *19*, 966–971. [[CrossRef](#)] [[PubMed](#)]
35. Boer, H.; Teeri, T.T.; Koivula, A. Characterization of *Trichoderma reesei* cellobiohydrolase Cel7A secreted from *Pichia pastoris* using two different promoters. *Biotechnol. Bioeng.* **2000**, *69*, 486–494. [[CrossRef](#)]
36. Ohta, K.; Tanaka, H.; Yamakawa, D.; Hamasuna, H.; Fujimoto, H. Signal peptide of *Aureobasidium pullulans* xylanase: Use for extracellular production of a fungal xylanase by *Escherichia coli*. *J. Ind. Microbiol. Biotechnol.* **2011**, *38*, 967–973. [[CrossRef](#)] [[PubMed](#)]
37. Ouephanit, C.; Boonvitthya, N.; Theerachai, M.; Bozonnet, S.; Chulalaksananukul, W. Efficient expression and secretion of endo-1,4- β -xylanase from *Penicillium citrinum* in non-conventional yeast *Yarrowia lipolytica* directed by the native and the preproLIP2 signal peptides. *Protein. Expr. Purif.* **2019**, *160*, 1–6. [[CrossRef](#)]
38. Uchima, C.A.; Arioka, M. Expression and one-step purification of recombinant proteins using an alternative episomal vector for the expression of N-tagged heterologous proteins in *Pichia pastoris*. *Biosci. Biotechnol. Biochem.* **2012**, *76*, 368–371. [[CrossRef](#)]
39. Zahrl, R.J.; Peña, D.A.; Mattanovich, D.; Gasser, B. Systems biotechnology for protein production in *Pichia pastoris*. *FEMS Yeast Res.* **2017**, *17*, fox068. [[CrossRef](#)]
40. Collins, T.; Gerday, C.; Feller, G. Xylanases, xylanase families and extremophilic xylanases. *FEMS Microbiol. Rev.* **2005**, *29*, 3–23. [[CrossRef](#)]
41. Kulkarni, N.; Shendye, A.; Rao, M. Molecular and biotechnological aspects of xylanases. *FEMS Microbiol. Rev.* **1999**, *23*, 411–456. [[CrossRef](#)] [[PubMed](#)]
42. Do, T.T.; Quyen, D.T.; Dam, T.H. Purification and characterization of an acidstable and organic solvent-tolerant xylanase from *Aspergillus awamori* VTCCF312. *Sci. Asia* **2012**, *38*, 157–165.
43. Barel, M.; Harduin-Lepers, A.; Portier, L.; Slomianny, M.; Charbit, A. Host glycosylation pathways and the unfolded protein response contribute to the infection by *Francisella*. *Cell Microbiol.* **2016**, *18*, 1763–1781. [[CrossRef](#)] [[PubMed](#)]
44. Spiro, R.G. Protein glycosylation: Nature, distribution, enzymatic formation, and disease implications of glycopeptide bonds. *Glycobiology* **2002**, *12*, 43R–56R. [[CrossRef](#)] [[PubMed](#)]
45. Jeya, M.; Thiagarajan, S.; Lee, J.K.; Gunasekaran, P. Cloning and expression of GH11 xylanase gene from *Aspergillus fumigatus* MKU1 in *Pichia pastoris*. *J. Biosci. Bioeng.* **2009**, *108*, 24–29. [[CrossRef](#)] [[PubMed](#)]

46. Qu, W.; Shao, W. Cloning, expression and characterization of glycoside hydrolase family 11 endoxylanase from *Bacillus pumilus* ARA. *Biotechnol. Lett.* **2011**, *33*, 1407–1416. [[CrossRef](#)]
47. Chantorn, S.; Piyapittayanun, C.; Khumphai, P.; Pannanusorn, S.; Phannachet, K.; Apiraksakorn, J. Suitable conditions for xylanases activities from *Bacillus* sp. GA2(1) and *Bacillus* sp. GA1(6) and their properties for agricultural residues hydrolysis. *Songklanakarin J. Sci. Technol.* **2018**, *38*, 177–182.
48. Liao, H.; Sun, S.; Wang, P.; Bi, W.; Tan, S.; Wei, Z.; Mei, X.; Liu, D.; Raza, W.; Shen, Q.; et al. A new acidophilic endo- β -1,4-xylanase from *Penicillium oxalicum*: Cloning, purification, and insights into the influence of metal ions on xylanase activity. *J. Ind. Microbiol. Biotechnol.* **2014**, *41*, 1071–1083. [[CrossRef](#)]
49. Ahmad, Z.; Butt, M.S.; Ahmed, A.; Riaz, M.; Sabir, S.M.; Farooq, U.; Rehman, F.U. Effect of *Aspergillus niger* xylanase on dough characteristics and bread quality attributes. *J. Food Sci. Technol.* **2014**, *51*, 2445–2453. [[CrossRef](#)]
50. Fan, G.; Yang, S.; Yan, Q.; Guo, Y.; Li, Y.; Jiang, Z. Characterization of a highly thermostable glycoside hydrolase family 10 xylanase from *Malbranchea cinnamomea*. *Int. J. Biol. Macromol.* **2014**, *70*, 482–489. [[CrossRef](#)]
51. Sun, J.; Shi, S.; Wu, J.; Xie, R.; Geng, A.; Zhu, D.C. Characterization of a salt-tolerant and cold-adapted xylanase from *Bacillus cellulosilyticus*. *BioResources* **2016**, *11*, 8875–8889. [[CrossRef](#)]
52. Berrin, J.G.; Williamson, G.; Puigserver, A.; Chaix, J.C.; McLauchlan, W.R.; Juge, N. High-level production of recombinant fungal endo-beta-1,4-xylanase in the methylotrophic yeast *Pichia pastoris*. *Protein. Expr. Purif.* **2000**, *19*, 179–187. [[CrossRef](#)] [[PubMed](#)]
53. Zhang, J.; Siika-Aho, M.; Puranen, T.; Tang, M.; Tenkanen, M.; Viikari, L. Thermostable recombinant xylanases from *Nonomuraea flexuosa* and *Thermoascus aurantiacus* show distinct properties in the hydrolysis of xylans and pretreated wheat straw. *Biotechnol. Biofuels* **2011**, *4*, 12. [[CrossRef](#)] [[PubMed](#)]
54. Goettig, P. Effects of Glycosylation on the Enzymatic Activity and Mechanisms of Proteases. *Int. J. Mol. Sci.* **2016**, *17*, 1969. [[CrossRef](#)] [[PubMed](#)]
55. Wu, S.; Letchworth, G.J. High efficiency transformation by electroporation of *Pichia pastoris* pretreated with lithium acetate and dithiothreitol. *BioTechniques* **2004**, *36*, 152–154. [[CrossRef](#)] [[PubMed](#)]
56. Miller, G.L. Use of dinitrosalicylic acid reagent for determining of reducing sugars. *Anal. Chem.* **1959**, *31*, 426–428. [[CrossRef](#)]

Sample Availability: Samples of the compounds are not available.



© 2019 by the authors. Licensee MDPI, Basel, Switzerland. This article is an open access article distributed under the terms and conditions of the Creative Commons Attribution (CC BY) license (<http://creativecommons.org/licenses/by/4.0/>).