



**HAL**  
open science

## Correction to: Identification of passion fruit (*Passiflora edulis*) chromosomes using BAC-FISH

Mariela A Sader, Yhanndra Dias, Z. P Costa, Carla Munhoz, Helen Penha, H el ene Berg es, M. L C Vieira, Andrea Pedrosa-Harand

### ► To cite this version:

Mariela A Sader, Yhanndra Dias, Z. P Costa, Carla Munhoz, Helen Penha, et al.. Correction to: Identification of passion fruit (*Passiflora edulis*) chromosomes using BAC-FISH. *Chromosome Research*, 2019, 27, pp.299 - 311. 10.1007/s10577-020-09633-2 . hal-03128720

**HAL Id: hal-03128720**

**<https://hal.inrae.fr/hal-03128720v1>**

Submitted on 2 Feb 2021

**HAL** is a multi-disciplinary open access archive for the deposit and dissemination of scientific research documents, whether they are published or not. The documents may come from teaching and research institutions in France or abroad, or from public or private research centers.




L'archive ouverte pluridisciplinaire **HAL**, est destin ee au d ep ot et  a la diffusion de documents scientifiques de niveau recherche, publi es ou non,  emanant des  tablissements d'enseignement et de recherche fran ais ou  trangers, des laboratoires publics ou priv es.



Distributed under a Creative Commons Attribution 4.0 International License



## Correction to: Identification of passion fruit (*Passiflora edulis*) chromosomes using BAC-FISH

M. A. Sader  · Y. Dias · Z. P. Costa · C. Munhoz · H. Penha · H. Bergès · M. L. C. Vieira  · A. Pedrosa-Harand 

© Springer Nature B.V. 2020

**Correction to: Chromosome Res (2019) 27:299–311**  
<https://doi.org/10.1007/s10577-019-09614-0>

The article “Identification of passion fruit (*Passiflora edulis*) chromosomes using BAC-FISH,” written by Mariela A. Sader, Yhanndra Dias, Zirlane P. da Costa, Carla Munhoz, Helen Penha, H el ene Berg es, Maria Lucia C. Vieira, and Andrea Pedrosa-Harand, was originally published with incorrect values in Figure 4. The correct Figure 4 is presented below.

---

The online version of the original article can be found at  
<https://doi.org/10.1007/s10577-019-09614-0>

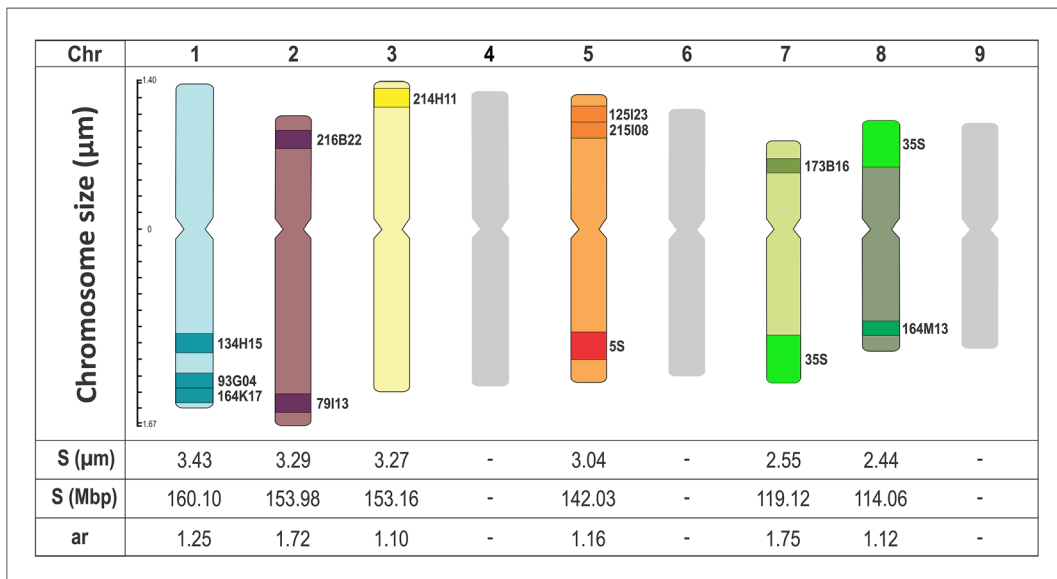
---

M. A. Sader · Y. Dias · A. Pedrosa-Harand (✉)  
Departamento de Bot nica, Laborat rio de Citogen tica e  
Evolu o Vegetal, Centro de Bioci ncias, Universidade Federal de  
Pernambuco, R. Prof. Moraes Rego, s/n, CDU, Recife, PE  
50670-901, Brazil  
e-mail: [andrea.harand@ufpe.br](mailto:andrea.harand@ufpe.br)

Z. P. Costa · C. Munhoz · M. L. C. Vieira  
Department of Genetics, “Luiz de Queiroz” College of  
Agriculture, University of S o Paulo, Piracicaba, Brazil

H. Penha  
Department of Technology, Faculty of Agricultural and Veterinary  
Sciences, S o Paulo State University (UNESP), Jaboticabal, Brazil

H. Berg es  
French Plant Genomic Resources Center (CNRGV)/INRA,  
Toulouse, France



**Figure 4** Idiogram of passion fruit showing the relative chromosome size (Chr., in  $\mu\text{m}$  and Mbp), centromere positions (ar, arm ratio), rDNA loci (5S and 35S), and single-copy BAC clone positions for six identified chromosome pairs