



HAL
open science

Adipokines expression profiles in both plasma and perirenal adipose tissue in Large White and Meishan sows: A possible involvement in the fattening and the onset of puberty

Alix Barbe, Patrycja Kurowska, Ewa Mlyczyńska, Christelle Ramé, Christophe Staub, Eric Venturi, Yvon Billon, Agnieszka Rak, Joëlle Dupont

► To cite this version:

Alix Barbe, Patrycja Kurowska, Ewa Mlyczyńska, Christelle Ramé, Christophe Staub, et al.. Adipokines expression profiles in both plasma and perirenal adipose tissue in Large White and Meishan sows: A possible involvement in the fattening and the onset of puberty. *General and Comparative Endocrinology*, 2020, 299, pp.1-12. 10.1016/j.ygcen.2020.113584 . hal-03151819

HAL Id: hal-03151819

<https://hal.inrae.fr/hal-03151819>

Submitted on 26 Sep 2022

HAL is a multi-disciplinary open access archive for the deposit and dissemination of scientific research documents, whether they are published or not. The documents may come from teaching and research institutions in France or abroad, or from public or private research centers.

L'archive ouverte pluridisciplinaire **HAL**, est destinée au dépôt et à la diffusion de documents scientifiques de niveau recherche, publiés ou non, émanant des établissements d'enseignement et de recherche français ou étrangers, des laboratoires publics ou privés.



Distributed under a Creative Commons Attribution - NonCommercial 4.0 International License

**Adipokines expression profiles in both plasma and peri renal adipose tissue
in Large White and Meishan sows :
a possible involvement in the fattening and the onset of puberty**

Alix Barbe¹, Patrycja Kurowska², Ewa Mlyczyńska², Christelle Ramé¹, Christophe Staub³,
Eric Venturi³, Yvon Billon⁴, Agnieszka Rak², Joëlle Dupont^{1*}

¹INRAE UMR85 Physiologie de la Reproduction et des Comportements, F-37380 Nouzilly, France CNRS UMR7247 Physiologie de la Reproduction et des Comportements, F-37380 Nouzilly, France Université François Rabelais de Tours F-37041 Tours, France IFCE F-37380 Nouzilly, France.

²Department of Physiology and Toxicology of Reproduction, Institute of Zoology and Biomedical Research, Jagiellonian University in Krakow, 30-387 Krakow, Poland

³INRAE - Unité Expérimentale de Physiologie Animale de l'Orfrasière UEPAO 1297, F-37380 Nouzilly, France.

⁴INRAE-Pig Innovative Breeding Experimental Facility, Le magnaud, 17000 Surgères, France

***Correspondence to:** Dr Joëlle Dupont, Unité de Physiologie de la Reproduction et des Comportements, Institut National de la Recherche Agronomique, 37380 Nouzilly, France
(e-mail : joelle.dupont@inrae.fr Phone: 33 2 47 42 77 89. Fax: 33 2 47 42 77 43)

The number of figures: 5

The number of tables: 8

Running title: Adipokines in plasma and peri renal adipose tissue of lean and fat sows

Footnote

WAT: White Adipose Tissue

LW: Large White

MS: Meishan

BFT: BackFat Thickness

Abstract

In pig, backfat deposition is strongly related to the growth and reproductive performance. However, the molecular regulatory mechanisms of adipose tissue are not clearly understood. Adipose tissue is now recognized as an important endocrine organ that secretes a variety of factors including adipokines. However, the regulation of expression pattern of these adipokines in both plasma and visceral white adipose tissue (WAT) in lean and fat pig is unclear. In the present study, we used two representative porcine breeds (Large White, LW; Meishan, MS) with contrasting backfat thickness and sexual maturity age. Using specific ELISA assays, we determined the plasma profile of eight adipokines, leptin, adiponectin, visfatin, apelin, chemerin, resistin, omentin and vaspin in LW and MS sows. By RT-qPCR and western-blot we also investigated the mRNA and protein levels of these adipokines and their cognate receptors (LEPR, ADIPOR1, ADIPOR2, CMKLR1, CCRL2, GPR1, APLNR, TLR4, ROR1, CAP1 and HSPA5) in the peri renal WAT, respectively. At both plasma and peri renal WAT level, we found that the amounts of leptin, chemerin, resistin and vaspin were higher whereas those of adiponectin and omentin were lower in MS than LW sows. Plasma and adipose tissue visfatin and apelin levels were not different between the two breeds. Moreover, we noted that the variations of peri renal WAT adipokines observed between MS and LW were similar at the protein and mRNA level except for chemerin and apelin suggesting post-transcriptional modifications for these two adipokines. Finally, among the eight adipokines studied, we showed that only the plasma concentrations of leptin and chemerin were positively and those of adiponectin, negatively associated with the thickness of fat and opposite correlation was found for the onset of puberty in both LW and MS animals. Taken together, these results support a potential involvement of adipokines in WAT regulation and its link with the onset of the puberty in sows.

Key words: adipokines, pig, puberty, fattening, plasma, white adipose tissue

1. Introduction

In pig, fat deposition plays a key role in the meat quality and the nutritional value of meat (Wood *et al.* 2008). Different adipose traits have been studied in pig breeds. Among them the most crucial include thickness of subcutaneous fat tissue on the back at different locations. In pig, backfat (BF) deposition is strongly related to the growth and reproductive performance. Indeed, the lower the level of deposited fat, the better the growth performance (Wood, *et al.* 2008). Some evidence shows also positive relationships of BF thickness with the subsequent gilt reproduction performance including the age at the onset of puberty and the litter size (Kummer *et al.* 2006, Tummaruk *et al.* 2001, Tummaruk *et al.* 2007). To investigate potential molecular mechanisms involved in the fattening and the sexual maturity, we used two representative pig breeds : Meishan (MS) and Large White (LW). Meishan gilts reach puberty at an earlier age and they are fatter than LW gilts (Bazer *et al.* 1988, Bidanel *et al.* 1991, Miyano *et al.* 1990). Adipocyte size-increasing is a major contributor to the greater backfat thickness for Meishan pigs (Nakajima *et al.* 2011). Adipose tissue is not only a site of lipid storage, but it is also described as an active endocrine organ (Kershaw & Flier 2004). It is the main tissue involved in the regulation of lipid metabolism and it is the site of *de novo* fatty acid synthesis in pigs (Ohea & Leveille 1969). Moreover, it is able to release hormones named adipokines involved in metabolic actions, but also adipogenesis (Jialal & Devaraj 2018, Luo & Liu 2016). Using pig breeds with diverging backfat thicknesses several studies described the white adipose tissue (WAT) transcriptome (Tao *et al.* 2017, Xing *et al.* 2019). They showed the involvement of pathways and genes of lipid metabolism in the backfat deposition (for review (Poklucar *et al.* 2020)). However, few studies investigate the potential role of adipokines at the plasma and visceral adipose tissue level in the pig fattening.

In mammals, many adipokines are associated with body mass index (BMI), food intake and reproductive functions (Bluher & Mantzoros 2015, Estienne *et al.* 2019, Rak *et al.* 2017b). In pig, the best-known adipokines are leptin (LEP) and adiponectin (ADIPOQ). Fat swine express higher levels of *LEP* mRNA and protein than lean swine at similar body weight (Ramsay *et al.* 1998). Meishan swine with high backfat express lower adiponectin transcripts in subcutaneous adipose tissue than Landrace swine with lower backfat (Nakajima *et al.* 2019). In our knowledge, no similar study was conducted to investigate plasma or WAT expression levels of other adipokines such as visfatin (NAMPT), chemerin (RARRES2), omentin (ITLN1), apelin (APLN), resistin (RETN) and vaspin (SERPINA12) in pig. The nucleotide sequences of porcine *NAMPT*, *RARRES2* and *RETN* were cloned and they encode for 52, 16 and 12 kDa proteins, respectively (Chen *et al.* 2007, Dai *et al.* 2006, Huang *et al.* 2010). The entire sequence for *APLN*, *ITLN1* and *SERPINA12* gene is still lacking. Only a partial sequence for porcine *APLN* is known (Del Ry *et al.* 2009). In mammals, adiponectin, apelin, and chemerin bind seven-transmembrane domain receptors (ADIPOR1 and ADIPOR2 for adiponectin, APLNR for apelin, CMKLR1, GPR1, and CCRL2 for chemerin) whereas leptin acts through LEPR, a member of class I cytokine receptor family. All these receptors have been described in various pig tissues (Huang *et al.* 2010, Lin *et al.* 2000, Lord *et al.* 2005, Rak *et al.* 2017a, Rozycka *et al.* 2018, Smolinska *et al.* 2019). In mammals, the receptor for resistin remains unknown. However, some reports have suggested potential receptors for resistin such as the receptor tyrosine kinase-like orphan receptor 1 (ROR1) (Sanchez-Solana *et al.* 2012), toll-like receptor 4 (TLR4) (Benomar *et al.* 2016) or adenylyl cyclase-associated protein 1 (CAP1) (Lee *et al.* 2014). Also, vaspin could bind to the HSPA5 receptor to regulate the proliferation apoptosis balance (Nakatsuka *et al.* 2013). Until now, no study investigated the expression of these receptors in pig WAT. However, there is some

evidence showing that adipokines may exert autocrine or paracrine effects in adipose tissue (Karastergiou & Mohamed-Ali 2010). Thus, it becomes crucial to deepen our understanding of the potential involvement of all these adipokines as key regulators of fattening and the sexual maturity in sows.

In this present study, we aimed to compare the plasma profile of eight adipokines (leptin, adiponectin, chemerin, visfatin, apelin, resistin, omentin and vaspin) between MS and LW sows. Furthermore, we investigated the expression pattern of these adipokines and their cognate receptors in the peri renal adipose tissue in both breeds. Finally, we determined whether the plasma adipokines could be associated to the fattening and to the age of the onset of puberty in these animals.

2. Materials and Methods

2.1 Ethical issues

Plasma and peri renal WAT tissue have been collected during meat processing as abattoir by-products by highly qualified and experienced laboratory staff. All the zootechnical parameters (body weight, backfat thickness, age at the puberty...) were routinely collected by the UEPAO (doi: 10.15454/1.5573896321728955E12) and Pig phenotyping and Innovative breeding facility (doi:10.15454/1.5572415481185847E12) experimental units for the monitoring of the breeding. Thus, according to the ethical issues for the protection of animals, this project does not require the consent of the competent ethics committee for animal experiments. The UEPAO and Pig phenotyping and Innovative breeding facility experimental units are registered by the Ministry of Agriculture with the license number D-37-175-1 and A17-661 for animal experimentation, respectively. All experiments were performed in accordance with the European Communities Council Directive 2010/63/UE. Once collected, tissues were immediately sampled, snap-frozen and stored at -80°C until use.

2.2 Animals, tissue and blood sampling and plasma preparation

WAT around the kidney and plasma were collected from 16 MS and 16 LW sexually mature at a local abattoir under veterinarian control, less than 20 min after slaughter. Tissues were transported to the laboratory in PBS with antibiotic-antimycotic solution within 30 min of collection. Blood samples and WAT were collected from 16 LW and 16 MS pigs on days 4–6 (early luteal phase) of oestrous cycle by morphological examination of the ovaries (Akins & Morrissette 1968). Plasma samples were prepared by low-speed centrifugation (2,000 g at

4°C for 10 min) and stored at -20°C to determine adipokines concentration. To determine adipokines and adipokine receptors mRNA and protein expression, WAT were immediately frozen in liquid nitrogen and stored at -70°C. Zootechnical parameters were also studied from animal databases implemented by two different experimental units. From the Pig phenotyping and Innovative breeding facility unit, we analysed the backfat thickness in LW and MS sows by using a database including 57 MS and 65 LW animals at 140 days old. Backfat thickness was measured as the average of ultrasonix measurements (Agroscan, E.C.M, Angoulême, France) determined directly at the last rib (P2 site), and last lumbar vertebra locations and taken 5 cm off the midline on each side of the pig. These data were collected from 2017 to 2019. From the UEPAO unit, we analysed the reproductive parameters (age at the puberty, maximum number of litter, size of litter and total number of piglet per female during its entire life) in 54 MS and 61 LW collected from 2008 to 2015. Pubertal signs were checked and recorded twice daily by inspection of the vulva and assessment of the standing reflex and using the back-pressure test (Dorries, et al. 1997).

2.3 RT-qPCR

Peri renal WAT (n=16 for each breed) was homogenized in the TRIzol® reagent using an Ultraturax (Invitrogen™ by Life Technologies™, Villebon sur Yvette, France) and total RNA was extracted using the RNeasy Midi kit (Quiagen®, Courtaboeuf, France) according to the manufacturer's recommendations. Concentration and purity of isolated RNA were determined with a NanoDrop Spectrophotometer (Peqlab Biotechnologie GmbH, Erlangen, Germany). The integrity of RNA was checked on 1.25 % agarose-formaldehyde gels. The cDNA was generated by reverse transcription (RT) of total RNA (1µg) in a mixture comprising: 0.5 mM each deoxyribonucleotide triphosphate (dATP, dGTP, dCTP, DTTP) 2 M of RT buffer, 15 µg / µL of oligodT, 0.125 U of ribonuclease inhibitor, and 0.05 U MMLV

(Moloney murine leukemia virus reverse transcriptase) for one hour at 37°C. Real-time PCR was performed using the MyiQ Cycle device (Bio-Rad, Marnes-la-Coquette, France), in a mixture of SYBR Green Supermix 1X reagent (Bio-Rad, Marnes la Coquette, France), 250 nM specific primers (Invitrogen™ by Life Technologies™, Villebon sur Yvette, France) (**Table 1**) and 5 µL of cDNA diluted to the fifth for a total volume of 20 µl. The samples were duplicated on the same plate. PCR amplification with water, instead of cDNA, was performed systematically as a negative control. After incubation for 2 minutes at 50°C and a denaturation step of 10 minutes at 95°C, samples were subjected to 40 cycles (30 seconds at 95°C, 30 seconds at 60°C, 30 seconds at 72°C), following by the acquisition of the melting curve. A test of primers' efficiency (E) was performed from serial dilutions of a pool of cDNA obtained from the samples. The efficiency was calculated with the following formula: $E = 10^{-1/\text{slope value}}$ and was ranged from 1.85 to 2.00 (**Table 1**). For each gene, expression was calculated according to primer efficiency (E) and quantification cycle (Cq), where expression = E^{-Cq} . Then, relative expression of the target gene to the reference gene was analyzed. We have tested several reference genes and selected a combination of three genes: tyrosine 3-monooxygenase/tryptophan 5-monooxygenase activation protein zeta polypeptide (*YWHAZ*), peptidylprolyl isomerase (*PPIA*), succinate dehydrogenase complex subunit A (*SDHA*) that were not affected by the breed or the time of oestrus cycle. Indeed, the geometric mean of multiple housekeeping genes has been reported as an accurate normalization factor (Vandesompele *et al.* 2002).

2.4 Western-blot

Peri renal WAT and plasma from 8 animals per breed were lysed using an Ultraturax (Invitrogen™ by Life Technologies™, Villebon sur Yvette, France) in lysis buffer (Tris 1 M (pH 7.4), NaCl 0.15 M, EDTA 1.3 mM, EGTA 1 mM, VO_4^{3-} 23 mM, NaF 0.1 M, NH_2PO_4

1 %, Triton 0.5 %). The lysates were centrifuged for 20 minutes at 16,000 g at 4 °C and the supernatant containing proteins was collected and kept on ice. The protein concentration was measured using the bicinchoninic acid (BCA) protein assay (Interchim, Montluçon, France). Lysate protein (60 µg) was mixed with Laemmli buffer 5 X and proteins were denatured for 5 minutes by heat shock at 95 °C. Proteins were loaded in an electrophoresis sodium dodecyl sulfate-polyacrylamide gel (12 % for high protein weight (110 – 20 kDa) and 15% for low protein weight (< 20 kDa)). Then, proteins were transferred to a nitrocellulose membrane. Membranes were blocked with Tris-Buffered Saline Tween buffer containing 0.05% of Tween 20 and 5% of milk for 30 minutes at room temperature. Membranes were incubated overnight at 4 °C with the appropriate primary antibody (**Table 2**). The validation of all these antibodies was already reported in pig tissue (cf references in **Table 2**). As shown in **Table 3**, adipokines and adipokines receptors protein studied are relatively conserved between pig and human species. Membranes were then incubated 90 minutes at room temperature with a HorseRadish Peroxidase-conjugated anti-rabbit or anti-mouse IgG (**Table 2**). Proteins of interest were detected by enhanced chemiluminescence (Western Lightning Plus-ECL, Perkin Elmer, Villebon-sur-Yvette, France) with a G-box SynGene (Ozyme, St Quentin en Yvelines, France) and GeneSnap software ((release 7.09.17), Ozyme, St Quentin en Yvelines, France). Then, proteins were quantified with GeneTools software (release 4.01.02).

2.5 Adipokine assays

Commercially available porcine leptin (SEA084PO), total adiponectin (RD591023200R), chemerin (all forms) (EP0169), visfatin (MBS 7230081), resistin (EK-028-36), apelin (RAB0018), omentin (MBS750058) and vaspin(MBS 267502) ELISA kits as described in **Table 4**, were used to quantify leptin, adiponectin, chemerin, visfatin, resistin, apelin, omentin and vaspin concentrations in LW and MS plasma. For all the assays, the inter-

and intra-experimental coefficients of variation were <12 and <10%, respectively. Samples were run in duplicate within the same assay. The sensitivity of each ELISA kit used is indicated in the **Table 4**.

2.6 Statistical analysis

The Statview® software (version 9.3) was used for all analyses. One-way analysis of variance (ANOVA) was performed on data from age, body weight, backfat thickness, age at the puberty, litter size, number of alive piglets per sow, plasma adipokines as well as the expression levels of adipokines and their receptors in peri renal WAT. All experimental data are presented as means \pm SEM. The level of statistical significance was set at $P < 0.05$. The relationships between quantitative parameters (plasma adipokines vs backfat thickness and plasma adipokines vs onset of puberty) were investigated by Pearson's correlation analyses using the Z-test of Statview software.

3. Results

3.1 Backfat thickness and reproductive performance in LW and MS

As showed in **Table 5**, we observed that MS animals had a higher backfat thickness (BFT) than LW animals (24.3 ± 0.4 vs 16.6 ± 0.3 mm, $P < 0.001$, $n = 16$ animals in each breed). This result was confirmed from a more important database provided by the Pig phenotyping and Innovative breeding facility experimental unit (INRAE, Magneraud, France) including 57 MS and 65 LW animals at 140 days old (19.5 ± 0.5 vs 11.1 ± 0.1 mm, $P < 0.001$). Concerning the reproductive performance, we noted that MS animals have an earlier sexual maturity than LW animals (86.1 ± 1.30 days vs 171.96 ± 2.8 , $P < 0.001$, $n = 16$ animals in each breed). Again, we confirmed these data from another larger database implemented by our porcine experimental unit (UEPAO, INRAE, Nouzilly, France) including 61 LW and 54 MS animals studied until their culling. With this later database, we showed that the maximum number of litter was higher in MS than LW sows (MS: 18 vs LW: 12, **Figure 1A**). Moreover, even if the litter size at the first parturition was similar between the two breeds (LW: 13.7 ± 0.2 vs MS : 12.5 ± 0.7 , $P = 0.8$, **Figure 1B**), the total amount of piglets produced during the entire life was significantly greater in MS than LW sows (122.9 ± 8.5 vs 81.2 ± 2.50 , $P < 0.001$, **Figure 1C**).

3.2 Plasma adipokines in LW and MS

We investigated the plasma adipokines in overnight fasted MS and LW sows. As showed in **Table 5** and **Figure 2**, we observed by using specific ELISA assays that plasma leptin, chemerin, resistin and vaspin concentrations were significantly higher in MS than LW sows ($P = 0.0001$) whereas plasma total adiponectin and omentin concentrations were lower in MS than LW ($P = 0.0001$). Furthermore, plasma visfatin and apelin levels were similar between the two breeds. We confirmed the ELISA assay data by immunoblot for adiponectin,

chemerin and omentin that were the three most plasma concentrated adipokines in our study (**Figure 3**).

3.3 Adipokines and adipokine receptors mRNA expression profile in visceral WAT

In the visceral WAT (peri-renal fat) of LW and MS animals, we examined the expression profiles of adipokines (*LEP*, *RARRES2*, *RETN*, *SERPINA12*, *ADIPOQ*, *ITLN1*, *NAMPT* and *APLN*) and those of receptors for adiponectin (*ADIPOR1* and *ADIPOR2*), chemerin (*CMKLR1*, *GPR1*, *CCRL2*), leptin (*LEPR LF (Long Form)*), resistin (potential receptors: *TLR4*, *ROR1*, *CAP1*), vaspin (potential receptor: *HSPA5*) and apelin (*APLNR*) at the mRNA levels by RT-qPCR. As showed in the **Table 6**, except for *NAMPT* and *APLNR* all adipokines tested and their receptor expression profiles were significantly different between the two breeds of sows ($P < 0.05$). *LEP*, *APLN*, *RETN*, *SERPINA12*, *ADIPOR1*, *CCRL2*, *GPR1*, *ROR1*, *CAP1* and *HSPA5* mRNA expression were significantly higher in MS than LW animals.

3.4 Adipokines and adipokine receptors protein expression profile in visceral WAT

We next determined the protein expression profile of all adipokines and adipokines receptors studied at the mRNA levels in the peri renal adipose tissue except for leptin receptor (long form), *ROR1* and *CAP1* due to the lack of specific porcine antibodies. Concerning the adipokines, as shown in **Figure 4**, leptin, chemerin, resistin and vaspin protein levels were significantly higher in MS than in LW animals whereas the amount of visfatin and apelin protein was similar in both breeds. Moreover, the adiponectin and omentin protein amounts were significantly lower in MS than LW animals (**Figure 4**). For the adipokines receptors, as shown in **Figure 5**, except for apelin receptor and *TLR4*, all adipokines receptors expression profiles were significantly different between the two breeds of sows. *ADIPOR1*, *GPR1*, *CCRL2* and *HSPA5* protein levels were significantly higher in MS than in LW sows (**Figure**

5). Thus, similar regulations at the mRNA and protein levels in peri renal adipose tissue from LW and MS sows were observed for all adipokines and adipokines receptors studied except for chemerin and apelin.

3.5 Correlation between the plasma adipokines, and the backfat thickness and the age at the puberty in both LW and MS sows

To link the concentration of plasma adipokines studied (leptin, chemerin, resistin, vaspin, adiponectin, omentin, visfatin and apelin) to the backfat thickness or to the age of sexual maturity we performed Pearson correlations. As shown in **Tables 7 and 8**, we found that only plasma leptin and chemerin were positively associated with the backfat thickness (**Table 7**, leptin: $r = 0.78$, $P = 0.002$ and chemerin: $r = 0.91$, $P = 0.0001$ for LW sows; and leptin: $r = 0.90$, $P = 0.0001$ and chemerin: $r = 0.92$, $P = 0.0001$ for MS sows) and negatively with the onset of the puberty (**Table 8**, leptin: $r = -0.80$, $P = 0.0001$ and chemerin: $r = -0.91$, $P = 0.0001$ for LW sows; and leptin: $r = -0.97$, $P = 0.0001$ and chemerin: $r = -0.83$, $P = 0.0001$ for MS sows) in both LW and MS. At the opposite, plasma adiponectin was negatively associated with these parameters in both LW and MS (**Table 7** for backfat thickness, adiponectin : $r = -0.95$, $P = 0.0001$ for LW sows and $r = -0.98$, $P = 0.0001$ for MS sows; **Table 8** and positively for the onset of the puberty, adiponectin : $r = 0.90$, $P = 0.0001$ for LW sows and $r = 0.91$, $P = 0.0001$ for MS sows).

Discussion

The efficiency and quality of pig meat production is strongly dependent on the metabolic processes involved in the lipid synthesis and deposition. Consequently, in order to optimize production traits in pigs, it is crucial to better understand the biological processes involved in the regulation of the adipogenesis and lipid metabolism in WAT of pigs. Moreover, the

knowledge of these processes in pig is relevant for the study of obesity and metabolic disorders in human. In mammals, the adipokines, leptin, adiponectin, visfatin, chemerin, apelin, resistin, omentin and vaspin are involved in the regulation of lipid metabolism in human and/or rodents. In the present study, we showed that these eight adipokines are differently regulated between MS and LW animals in both plasma and peri-renal WAT. Furthermore, we showed that only plasma leptin and chemerin were positively correlated to both BFT thickness and negatively with onset of the puberty whereas the opposite was observed for adiponectin.

Our data concerning the higher plasma leptin in MS with a greater BF thickness are in a good agreement with the literature. Indeed, as observed in various studies in humans and rodents (for review (GuerreMillo 1997)), greater adipose tissue increases circulating plasma leptin in pig (Lee *et al.* 2019). In swine, the positive correlation between circulating leptin in plasma and adipose tissue mass is also recognized as a potent regulator of reproductive neuroendocrine axis in gilts (Barb *et al.* 2005). In our study, we found that plasma leptin was negatively associated with the age at the beginning of the puberty in the sow (MS and LW). So, it means that animals with higher plasma leptin concentrations are earlier sexually mature. These data are in a good agreement with some bibliography showing that leptin could participate in the promotion of reproductive maturity (Elias 2012). In the present study we observed that MS animals had higher plasma leptin levels and were earlier sexually mature as compared to LW animals. Our results are in good agreement with human data showing that leptin levels are higher in girls with central precocious puberty (Verrotti *et al.* 2003, Zurita-Cruz *et al.* 2017). One of the major mechanisms whereby leptin influences the timing of puberty is via its ability to regulate the hypothalamic Kiss1 system. Indeed, a close association between higher leptin levels, increased Kiss1/kisspeptin expression and earlier

puberty onset (or vice versa) has been demonstrated in the female rat (Castellano *et al.* 2011). Even if this association remains to demonstrate in pig, it will be very interesting to compare kisspeptin system expression in LW and MS. Various studies in humans and rodents with leptin deficiency showed that, while leptin is indispensable for puberty to proceed, leptin alone cannot trigger early puberty, therefore supporting a major permissive role of this hormone in the metabolic gating of pubertal maturation. Although serum leptin increases during the puberty in the gilt, other factors such serum estradiol in addition to leptin may regulate the onset of puberty (Barb *et al.* 2004). Moreover, leptin directly affects ovarian function in prepubertal pigs by stimulating estradiol secretion and inhibiting cell apoptosis (Gregoraszczyk *et al.* 2006).

Concerning adiponectin, Daniele *et al.*, 2008, analysed mRNA *ADIPOQ* expression in two genetically different breeds of pigs, lean type, Large White and fat type, Casertana and they observed higher *ADIPOQ* expression in LW showing for the first time that *ADIPOQ* expression was negatively correlated with the "fat" phenotype in pig (Daniele *et al.* 2008). Moreover, a recent study of Nakajima *et al.*, 2019 reported a significant difference in *ADIPOQ* and *ADIPOR1* mRNA levels in lean and fat pigs (Nakajima *et al.* 2019). Lean-type pigs exhibited higher *ADIPOQ* mRNA expression, fat-type pigs had slightly high expression in its receptor, *ADIPOR1*. In the present study, the *ADIPOQ* expression pattern confirms previous data indicating that fatter genotype of pigs can be characterized as decreased expression of adiponectin in subcutaneous fat and low adiponectin circulation as well (Jacobi *et al.* 2004, Lord *et al.* 2005). In our study, we showed that MS had lower plasma adiponectin and peri renal WAT adiponectin and *ADIPOR2* expression but higher peri renal WAT *ADIPOR1*. However, Lord *et al* found that *ADIPOQ* and *ADIPOR2* mRNA levels, but not *ADIPOR1*, are modulated in pig visceral fat tissues (Lord *et al.* 2005) suggesting not only

different regulation between ADIPOR1 and ADIPOR2 but also according to the location of WAT. In human subcutaneous adipose tissue, during adipocyte differentiation the expression of *ADIPOR2* is increased, whereas *ADIPOR1* mRNA levels are relatively stable (Rasmussen *et al.* 2006). In our study, we did not compare the adipocyte differentiation between LW and MS animals, but we could speculate that the opposite profile observed between ADIPOR1 and ADIPOR2 is associated with a different structure or functioning of the peri-renal adipose tissue between LW and MS animals. Concerning the location of WAT, Depreester *et al.* investigated the expression of adipokines in five different WAT in dairy cow and they showed a higher mRNA expression of *ADIPOQ* in intra pelvic and peri-renal as compared to subcutaneous, omental or mesenteric WAT (Depreester *et al.* 2018). Until now, even if no comparable data are available in pig species, we can hypothesize variation of adipokine and adipokine receptors expression according to the location of WAT. In our study, we showed a positive correlation between plasma adiponectin and the onset of the puberty. In mice, adiponectin deficiency altered the peak concentrations of LH surge (Cheng *et al.* 2016) and adiponectin can modulate *in vitro* LH and FSH secretion by pig gonadotrophs (Kiezun *et al.* 2014). The role of adiponectin *in vivo* in the regulation of the sexual maturity in pig remains to determine.

In the present study, we did not observe any difference between LW and MS in term of plasma and peri-renal WAT visfatin suggesting that this adipokine is not involved in the fattening in swine. Similar conclusions have been observed by Palin *et al.*, 2008 reporting that visfatin cannot be considered as a marker of fat accumulation in pig since the highest *NAMPT* expression levels (mRNA and protein) were associated with the leaner animals (Palin *et al.* 2008). In adult humans, plasma concentrations of visfatin were shown to be positively associated with obesity, although negative associations were also reported (Sommer *et al.*

2008). However, associations between polymorphisms of human NAMPT, insulin levels and obesity were reported (Bailey *et al.* 2006, Blakemore *et al.* 2009). Thus, this discrepancy between pig and human about the involvement of visfatin in fattening remains to be investigated. In human, serum chemerin levels are increased in obesity as a result of enhanced synthesis in fat tissues (Rourke *et al.* 2013). Indeed, *RARRES2* mRNA expression in subcutaneous and omental adipose tissues of patients was higher in obesity, and it decreased upon bariatric surgery evoked weight loss (Chakaroun *et al.* 2012). In good agreement with these data, we observed a higher plasma levels and peri renal WAT protein amount of chemerin in « fat » MS as compared to LW. However, it is well known that several C-terminally truncated chemerin isoforms are present in plasma (Buechler *et al.* 2019) and these isoforms are not distinguished by most of ELISA assays. So it will be interesting to quantify these different isoforms in fat and lean pig to better understand the role of chemerin in the pig fattening. In our study, we also observed that the protein level of the three chemerin receptors was differently regulated in MS and LW. Indeed, GPR1 and CCRL2 were higher whereas CMKLR1 was lower expressed in MS as compared to LW. In pig, Huang *et al.* found that GPR1 was more expressed in epididymal and subcutaneous than CMKLR1 suggesting that GPR1 could be involved in the lipid metabolism regulation in pig (Huang *et al.* 2010).

Concerning resistin, we showed that this adipokine was higher expressed in plasma and peri renal WAT of MS as compared to LW animals suggesting that resistin could be involved in the fattening in pig. These data are in good agreement with those of Chen *et al.*, 2004 showing that resistin is expressed in adipose tissue and increased during the development of obesity in pig (Chen *et al.* 2004). In humans, mutations in the *RETN* locus have been associated with obesity and insulin resistance (Engert *et al.* 2002). Moreover, Ortega *et al.* found a positive association between resistin levels and body fat percentage, especially in

girls (Ortega *et al.* 2013). In pig associations between the polymorphisms in *RETN* gene with several phenotypic measurements, including fat traits have been suggested (Otieno *et al.* 2005). However, in our study plasma resistin was not significantly correlated with the backfat thickness that is a good indicator for fat deposition (Gray *et al.* 1968). Thus, further studies are necessary to determine whether resistin is associated to fattening in pig. Morash *et al.*, 2002 showed an increase in *RETN* expression in pituitary of prepubertal mice (Moras *et al.* 2004) and Rak-Mardyła *et al.*, 2013 documented local-ovarian resistin action in prepubertal pig (Rak-Mardyła *et al.* 2013) suggesting that resistin could be involved during prepubertal time.

Here, we found that apelin levels in plasma and in peri renal WAT were similar in MS and LW suggesting that this adipokine is not involved in the adipose tissue development in pig. In the literature, no data about a potential role of apelin in the regulation of lipid metabolism or in the sexual maturity has been yet described in pig. In human, an absence of correlation between plasma apelin concentrations and body mass index has often been described (Castan-Laurell *et al.* 2011). Concerning omentin and vaspin, like apelin, no role in the control of energy metabolism or the puberty in female has been yet described in pig. Interestingly, we observed that omentin and vaspin levels (plasma and peri renal WAT) were decreased and increased in MS as compared to LW, respectively. These data are in good agreement with human data showing that plasma omentin and vaspin were lower and higher in obese as compared to lean human (Feng *et al.* 2014, Watanabe *et al.* 2017). However, we found no significant association between the plasma levels of these two adipokines and the backfat thickness and the sexual maturity.

4. Conclusions

Taken together, our results report for the first time the pattern of expression of eight adipokines in both plasma and peri renal WAT in two pig breeds with different fattening and fertility parameters. We found that these eight adipokines except for visfatin and apelin are differently regulated between MS and LW animals in both plasma and peri-renal WAT. Furthermore, we showed that only plasma leptin and chemerin were positively correlated to both BFT thickness and negatively with onset of the puberty whereas the opposite was observed for adiponectin. Future research needs to assess the profile of the different forms of blood circulating adipokines in order to better understand their role in the interactions between energy metabolism and fertility in sow.

Acknowledgments

The authors are grateful to all the animal staff for take care of animals used in this study. They also thank Mr Jean-Philippe Dubois and Sylvain Bourgeois that performed blood and peri renal adipose tissue sampling at the slaughterhouse.

Funding:

This work was financially supported by INRAE.

Figures legends

Figure 1: Reproductive parameters in Large White (LW) and Meishan (MS). **A.** Percentage of sow in each number of litter in each breed. Fifty-four MS and sixty-one LW sows were followed in term of number of litter until their culling. **B.** Litter size at the first parturition (litter number 1). MS (n=54) and LW (n=61). Data are shown as the mean \pm SEM. **C.** Total amount of piglets produced during the entire life in MS (n=54) and LW (n=61). Data

are shown as the mean \pm SEM. Groups showing different letters are significantly different ($P < 0.05$).

Figure 2: Plasma concentration of leptin (A), adiponectin (B), visfatin (C), chemerin (D), omentin (E), apelin (F), resistin (G) and vaspin (H) determined by ELISA assays in Large White (LW) and Meishan (MS) sows. Data are shown as the mean \pm SEM; n = 16 animals per breed. Groups showing different letters are significantly different ($P < 0.05$).

Figure 3: Protein level of adiponectin (A), chemerin (B) and omentin (C) determined by immunoblot in plasma in Large White (LW) and Meishan (MS) sows. All serum samples contained equal amounts of proteins, as confirmed by staining the nitrocellulose membrane with Ponceau. Blots were quantitated and the results are expressed as intensity signal in arbitrary units after normalization, allowed by the use of reversible ponceau staining, as an internal standard. Data are shown as the mean \pm SEM; n = 8 animals per breed. Groups showing different letters are significantly different ($P < 0.05$).

Figure 4: Protein expression of leptin (A), adiponectin (B), visfatin (C), chemerin (D), omentin (E), apelin (F), resistin (G) and vaspin (H) determined by immunoblot in perirenal WAT in Large White (LW) and Meishan (MS) sows. Vinculin is used as a loading control. Blots were quantitated, and the ratios of adipokines to vinculin were represented. Data are shown as the mean \pm SEM; n = 8 animals per breed. Groups showing different letters are significantly different ($P < 0.05$).

Figure 5: Protein expression of ADIPOR1 (A), ADIPOR2 (B), CMKLR1 (C), GPR1 (D), CCRL2 (E), APLNR (F), TLR4 (G) and HSPA5 (H) determined by immunoblot in peri

renal WAT in Large White (LW) and Meishan (MS) sows. Vinculin is used as a loading control. Blots were quantitated, and the ratios of adipokines receptors to vinculin were represented. Data are shown as the mean \pm SEM; n = 8 animals per breed. Groups showing different letters are significantly different ($P < 0.05$).

References

- Akins, EL, and MC Morrissette 1968 Gross Ovarian Changes during Estrous Cycle of Swine. *American Journal of Veterinary Research* **29** 1953-+.
- Alvarez, B, C Revilla, S Chamorro, M Lopez-Fraga, F Alonso, J Dominguez, and A Ezquerro 2006 Molecular cloning, characterization and tissue expression of porcine Toll-like receptor 4. *Dev Comp Immunol* **30** 345-355.
- Aquila, S, V Rago, C Guido, I Casaburi, S Zupo, and A Carpino 2008 Leptin and leptin receptor in pig spermatozoa: evidence of their involvement in sperm capacitation and survival. *Reproduction* **136** 23-32.
- Bailey, SD, JC Loredó-Osti, P Lepage, J Faith, J Fontaine, KM Desbiens, TJ Hudson, C Bouchard, D Gaudet, L Perusse, MC Vohl, and JC Engert 2006 Common polymorphisms in the promoter of the visfatin gene (PBEF1) influence plasma insulin levels in a French-Canadian population. *Diabetes* **55** 2896-2902.
- Barb, CR, JB Barrett, and RR Kraeling 2004 Role of leptin in modulating the hypothalamic-pituitary axis and luteinizing hormone secretion in the prepuberal gilt. *Domestic Animal Endocrinology* **26** 201-214.
- Barb, CR, GJ Hausman, and K Czaja 2005 Leptin: A metabolic signal affecting central regulation of reproduction in the pig. *Domestic Animal Endocrinology* **29** 186-192.
- Bazer, FW, WW Thatcher, F Martinatbotte, and M Terqui 1988 Sexual-Maturation and Morphological Development of the Reproductive-Tract in Large White and Prolific Chinese Meishan Pigs. *Journal of Reproduction and Fertility* **83** 723-728.
- Benomar, Y, H Amine, D Crepin, S Al Rifai, L Riffault, A Gertler, and M Taouis 2016 Central Resistin/TLR4 Impairs Adiponectin Signaling, Contributing to Insulin and FGF21 Resistance. *Diabetes* **65** 913-926.
- Bidanel, JP, M Bonneau, A Pointillart, J Gruand, J Mourot, and I Demade 1991 Effects of Exogenous Porcine Somatotropin (Pst) Administration on Growth-Performance, Carcass Traits, and Pork Meat Quality of Meishan, Pietrain, and Crossbred Gilts. *Journal of Animal Science* **69** 3511-3522.
- Blakemore, AI, D Meyre, J Delplanque, V Vatin, C Lecoeur, M Marre, J Tichet, B Balkau, P Froguel, and AJ Walley 2009 A rare variant in the visfatin gene (NAMPT/PBEF1) is associated with protection from obesity. *Obesity (Silver Spring)* **17** 1549-1553.
- Bluher, M, and CS Mantzoros 2015 From leptin to other adipokines in health and disease: Facts and expectations at the beginning of the 21st century. *Metabolism-Clinical and Experimental* **64** 131-145.
- Buechler, C, S Feder, EM Haberl, and C Aslanidis 2019 Chemerin Isoforms and Activity in Obesity. *International Journal of Molecular Sciences* **20**.

- Castan-Laurell, I, C Dray, C Attane, T Duparc, C Knauf, and P Valet** 2011 Apelin, diabetes, and obesity. *Endocrine* **40** 1-9.
- Castellano, JM, AH Bentsen, MA Sánchez-Garrido, F Ruiz-Pino, M Romero, D Garcia-Galiano, E Aguilar, L Pinilla, C Diéguez, JD Mikkelsen, and M Tena-Sempere** 2011 Early metabolic programming of puberty onset: impact of changes in postnatal feeding and rearing conditions on the timing of puberty and development of the hypothalamic kisspeptin system. *Endocrinology* **152** 3396-408.
- Chakaroun, R, M Raschpichler, N Kloting, A Oberbach, G Flehmig, M Kern, MR Schon, E Shang, T Lohmann, M Dressler, M Fasshauer, M Stumvoll, and M Bluther** 2012 Effects of weight loss and exercise on chemerin serum concentrations and adipose tissue expression in human obesity. *Metabolism-Clinical and Experimental* **61** 706-714.
- Chen, H, T Xia, L Zhou, X Chen, L Gan, W Yao, Y Peng, and Z Yang** 2007 Gene organization, alternate splicing and expression pattern of porcine visfatin gene. *Domest Anim Endocrinol* **32** 235-245.
- Chen, XD, T Lei, T Xia, L Gan, and ZQ Yang** 2004 Increased expression of resistin and tumour necrosis factor-alpha in pig adipose tissue as well as effect of feeding treatment on resistin and cAMP pathway. *Diabetes Obesity & Metabolism* **6** 271-279.
- Cheng, LX, H Shi, Y Jin, XX Li, JS Pan, YM Lai, Y Lin, Y Jin, G Roy, A Zhao, and FH Li** 2016 Adiponectin Deficiency Leads to Female Subfertility and Ovarian Dysfunctions in Mice. *Endocrinology* **157** 4875-4887.
- Cloix, L, M Reverchon, M Cornuau, P Froment, C Rame, C Costa, G Froment, P Lecomte, WY Chen, D Royere, F Guerif, and J Dupont** 2014 Expression and Regulation of INTELECTIN1 in Human Granulosa-Lutein Cells: Role in IGF-1-Induced Steroidogenesis Through NAMPT. *Biology of Reproduction* **91**.
- Dai, CH, L Sun, LH Yu, GQ Zhu, SL Wu, and WB Bao** 2016 Effects of porcine MyD88 knockdown on the expression of TLR4 pathway-related genes and proinflammatory cytokines. *Bioscience Reports* **36**.
- Dai, MH, T Xia, XD Chen, L Gan, SQ Feng, H Qiu, Y Peng, and ZQ Yang** 2006 Cloning and characterization of porcine resistin gene. *Domest Anim Endocrinol* **30** 88-97.
- Dai, RJ, N Li, and CX Wu** 2000 [Molecular cloning and analysing of porcine obese cDNA]. *Yi Chuan Xue Bao* **27** 290-297.
- Daniele, A, R Cammarata, M Masullo, G Nerone, F Finamore, M D'Andrea, F Pilla, and G Oriani** 2008 Analysis of adiponectin gene and comparison of its expression in two different pig breeds. *Obesity* **16** 1869-1874.
- Del Ry, S, M Cabiati, S Raucci, A Simioniuc, C Caselli, T Prescimone, and D Giannessi** 2009 Sequencing and cardiac expression of Apelin in Sus Scrofa. *Pharmacological Research* **60** 314-319.
- Depreester, E, J De Koster, M Van Poucke, M Hostens, W Van den Broeck, L Peelman, GA Contreras, and G Opsomer** 2018 Influence of adipocyte size and adipose depot on the number of adipose tissue macrophages and the expression of adipokines in dairy cows at the end of pregnancy. *J Dairy Sci.* **101** 6542-6555. **Ding, ST, BH Liu, and YH Ko** 2004 Cloning and expression of porcine adiponectin and adiponectin receptor 1 and 2 genes in pigs. *Journal of Animal Science* **82** 3162-3174.
- Dorries, KM, E AdkinsRegan, and BP Halpern** 1997 Sensitivity and behavioral responses to the pheromone androstenone are not mediated by the vomeronasal organ in domestic pigs. *Brain Behavior and Evolution* **49** 53-62.
- Elias, CF** 2012 Leptin action in pubertal development: recent advances and unanswered questions. *Trends Endocrinol Metab* **23** 9-15.

- Engert, JC, MC Vohl, SM Williams, P Lepage, JC Loredó-Osti, J Faith, C Dore, Y Renaud, NP Burt, A Villeneuve, JN Hirschhorn, D Altshuler, LC Groop, JP Despres, D Gaudet, and TJ Hudson** 2002 5' flanking variants of resistin are associated with obesity. *Diabetes* **51** 1629-1634.
- Estienne, A, A Bongrani, M Reverchon, C Rame, PH Ducluzeau, P Froment, and J Dupont** 2019 Involvement of Novel Adipokines, Chemerin, Visfatin, Resistin and Apelin in Reproductive Functions in Normal and Pathological Conditions in Humans and Animal Models. *International Journal of Molecular Sciences* **20**.
- Fan, L, Y Peng, D Wu, J Hu, X Shi, G Yang, and X Li** 2020 Dietary supplementation of *Morus nigra* L. leaves decrease fat mass partially through elevating leptin-stimulated lipolysis in pig model. *J Ethnopharmacol* **249** 112416.
- Feng, RN, YC Li, C Wang, C Luo, LY Liu, FC Chuo, Q Li, and CH Sun** 2014 Higher vaspin levels in subjects with obesity and type 2 diabetes mellitus: A meta-analysis. *Diabetes Research and Clinical Practice* **106** 88-94.
- Ferenc, K, T Pilzys, T Skrzypek, D Garbicz, M Marcinkowski, M Dylewska, P Gladysz, O Skorobogatov, Z Gajewski, E Grzesiuk, and R Zabielski** 2017 Structure and Function of Enterocyte in Intrauterine Growth Retarded Pig Neonates. *Disease Markers*.
- Gray, RC, LF Tribble, BN Day, and JF Lasley** 1968 Results of 5 Generations of Selection for Low Backfat Thickness in Swine. *Journal of Animal Science* **27** 331-&.
- Gregoraszczyk, EL, A Rak, A Wojtowicz, A Ptak, T Wojciechowicz, and KW Nowak** 2006 GH and IGF-I increase leptin receptor expression in prepubertal pig ovaries: The role of leptin in steroid secretion and cell apoptosis. *Acta Veterinaria Hungarica* **54** 413-426.
- GuerreMillo, M** 1997 Regulation of ob gene and overexpression in obesity. *Biomedicine & Pharmacotherapy* **51** 318-323.
- Huang, JF, J Zhang, T Lei, XD Chen, Y Zhang, LL Zhou, A Yu, ZL Chen, RH Zhou, and ZQ Yang** 2010 Cloning of porcine chemerin, ChemR23 and GPR1 and their involvement in regulation of lipogenesis. *Bmb Reports* **43** 491-498.
- Jacobi, SK, KM Ajuwon, TE Weber, JL Kuske, CJ Dyer, and ME Spurlock** 2004 Cloning and expression of porcine adiponectin, and its relationship to adiposity, lipogenesis and the acute phase response. *Journal of Endocrinology* **182** 133-144.
- Jialal, I, and S Devaraj** 2018 Subcutaneous adipose tissue biology in metabolic syndrome. *Hormone Molecular Biology and Clinical Investigation* **33**.
- Karastergiou, K, and V Mohamed-Ali** 2010 The autocrine and paracrine roles of adipokines. *Mol Cell Endocrinol* **318** 69-78.
- Kershaw, EE, and JS Flier** 2004 Adipose tissue as an endocrine organ. *Journal of Clinical Endocrinology & Metabolism* **89** 2548-2556.
- Kiezun, M, N Smolinska, A Maleszka, K Dobrzyn, K Szeszko, and T Kaminski** 2014 Adiponectin expression in the porcine pituitary during the estrous cycle and its effect on LH and FSH secretion. *American Journal of Physiology-Endocrinology and Metabolism* **307** E1038-E1046.
- Kummer, R, ML Bernardi, I Wentz, and FP Bortolozzo** 2006 Reproductive performance of high growth rate gilts inseminated at an early age. *Animal Reproduction Science* **96** 47-53.
- Kurowska, P, E Mlyczynska, A Barbe, C Staub, E Gregoraszczyk, J Dupont, and A Rak** 2019 Vaspin in the pig ovarian follicles: expression and regulation by different hormones. *Reproduction* **158** 135-146.
- Lee, S, A Hosseindoust, Y Choi, M Kim, K Kim, J Lee, Y Kim, and B Chae** 2019 Age and weight at first mating affects plasma leptin concentration but no effects on

- reproductive performance of gilts. *Journal of Animal Science and Technology* **61** 285-293.
- Lee, S, HC Lee, YW Kwon, SE Lee, Y Cho, J Kim, S Lee, JY Kim, J Lee, HM Yang, I Mook-Jung, KY Nam, J Chung, MA Lazar, and HS Kim** 2014 Adenylyl Cyclase-Associated Protein 1 Is a Receptor for Human Resistin and Mediates Inflammatory Actions of Human Monocytes. *Cell Metabolism* **19** 484-497.
- Lin, J, CR Barb, RL Matteri, RR Kraeling, X Chen, RJ Meinersmann, and GB Rampacek** 2000 Long form leptin receptor mRNA expression in the brain, pituitary, and other tissues in the pig. *Domestic Animal Endocrinology* **19** 53-61.
- Lord, E, S Ledoux, BD Murphy, D Beaudry, and MF Palin** 2005 Expression of adiponectin and its receptors in swine. *Journal of Animal Science* **83** 565-578.
- Luo, LP, and ML Liu** 2016 Adipose tissue in control of metabolism. *Journal of Endocrinology* **231** R77-R99.
- Miyano, T, J Akamatsu, S Kato, I Nanjo, and S Kanda** 1990 Ovarian Development in Meishan Pigs. *Theriogenology* **33** 769-775.
- Morash, BA, E Ur, G Wiesner, J Roy, and M Wilkinson** 2004 Pituitary resistin gene expression: Effects of age, gender and obesity. *Neuroendocrinology* **79** 149-156.
- Nakajima, I, M Kojima, M Oe, K Ojima, S Muroya, and K Chikuni** 2019 Comparing pig breeds with genetically low and high backfat thickness: differences in expression of adiponectin, its receptor, and blood metabolites. *Domestic Animal Endocrinology* **68** 54-63.
- Nakajima, I, M Oe, K Ojima, S Muroya, M Shibata, and K Chikuni** 2011 Cellularity of developing subcutaneous adipose tissue in Landrace and Meishan pigs: Adipocyte size differences between two breeds. *Animal Science Journal* **82** 144-149.
- Nakatsuka, A, J Wada, I Iseda, S Teshigawara, K Higashio, K Murakami, M Kanzaki, K Inoue, T Terami, A Katayama, K Hida, J Eguchi, D Ogawa, Y Matsuki, R Hiramatsu, H Yagita, S Kakuta, Y Iwakura, and H Makino** 2013 Visceral Adipose Tissue-derived Serine Proteinase Inhibitor Inhibits Apoptosis of Endothelial Cells as a Ligand for the Cell-Surface GRP78/Voltage-dependent Anion Channel Complex. *Circulation Research* **112** 771-+.
- Ohea, EK, and GA Leveille** 1969 Significance of Adipose Tissue and Liver as Sites of Fatty Acid Synthesis in Pig and Efficiency of Utilization of Various Substrates for Lipogenesis. *Journal of Nutrition* **99** 338-+.
- Ortega, L, P Riestra, P Navarro, T Gavela-Perez, L Soriano-Guillen, and C Garces** 2013 Resistin levels are related to fat mass, but not to body mass index in children. *Peptides* **49** 49-52.
- Otieno, CJ, J Bastiaansen, AM Ramos, and MF Rothschild** 2005 Mapping and association studies of diabetes related genes in the pig. *Animal Genetics* **36** 36-42.
- Palin, MF, B Labrecque, D Beaudry, M Mayhue, V Bordignon, and BD Murphy** 2008 Visfatin expression is not associated with adipose tissue abundance in the porcine model. *Domestic Animal Endocrinology* **35** 58-73.
- Poklukar, K, M Candek-Potokar, N Batorek Lukac, U Tomazin, and M Skrlep** 2020 Lipid Deposition and Metabolism in Local and Modern Pig Breeds: A Review. *Animals (Basel)* **10**.
- Rak-Mardyla, A, M Durak, and EL Gregoraszcuk** 2013 Effects of resistin on porcine ovarian follicle steroidogenesis in prepubertal animals: an in vitro study. *Reproductive Biology and Endocrinology* **11**.
- Rak, A, E Drwal, C Rame, K Knapczyk-Stwora, M Slomczynska, J Dupont, and EL Gregoraszcuk** 2017a Expression of apelin and apelin receptor (APJ) in porcine

- ovarian follicles and in vitro effect of apelin on steroidogenesis and proliferation through APJ activation and different signaling pathways. *Theriogenology* **96** 126-135.
- Rak, A, E Drwal, A Wrobel, and EL Gregoraszczyk** 2015 Resistin is a survival factor for porcine ovarian follicular cells. *Reproduction* **150** 343-355.
- Rak, A, N Mellouk, P Froment, and J Dupont** 2017b Adiponectin and resistin: potential metabolic signals affecting hypothalamo-pituitary gonadal axis in females and males of different species. *Reproduction* **153** R215-R226.
- Ramsay, TG, X Yan, and C Morrison** 1998 The obesity gene in swine: Sequence and expression of porcine leptin. *Journal of Animal Science* **76** 484-490.
- Rasmussen, MS, AS Lihn, SB Pedersen, JM Bruun, M Rasmussen, and B Richelsen** 2006 Adiponectin receptors in human adipose tissue: effects of obesity, weight loss, and fat depots. *Obesity (Silver Spring)* **14** 28-35.
- Reverchon, M, MJ Bertoldo, C Rame, P Froment, and J Dupont** 2014 CHEMERIN (RARRES2) Decreases In Vitro Granulosa Cell Steroidogenesis and Blocks Oocyte Meiotic Progression in Bovine Species. *Biology of Reproduction* **90**.
- Rourke, JL, HJ Dranse, and CJ Sinal** 2013 Towards an integrative approach to understanding the role of chemerin in human health and disease. *Obesity Reviews* **14** 245-262.
- Rozycka, M, P Kurowska, M Grzesiak, M Kotula-Balak, W Tworzydło, C Rame, E Gregoraszczyk, J Dupont, and A Rak** 2018 Apelin and apelin receptor at different stages of corpus luteum development and effect of apelin on progesterone secretion and 3beta-hydroxysteroid dehydrogenase (3beta-HSD) in pigs. *Anim Reprod Sci* **192** 251-260.
- Sanchez-Solana, B, S Rivero, ML Nueda, J Laborda, and V Baladron** 2012 Mouse resistin modulates adipogenesis and glucose uptake in 3T3-L1 preadipocytes through the ROR1 receptor. *Febs Journal* **279** 308-308.
- Sitticharoon, C, M Sukharomana, S Likitmaskul, M Churintaraphan, and P Maikaew** 2017 Increased high molecular weight adiponectin, but decreased total adiponectin and kisspeptin, in central precocious puberty compared with aged-matched prepubertal girls (vol 29, pg 1466, 2017). *Reproduction Fertility and Development* **29** 2506-2506.
- Smolinska, N, M Kiezun, K Dobrzyn, E Rytelawska, K Kisielewska, M Gudelska, E Zaobidna, K Bogus-Nowakowska, J Wyrebek, K Bors, G Kopij, B Kaminska, and T Kaminski** 2019 Expression of Chemerin and Its Receptors in the Porcine Hypothalamus and Plasma Chemerin Levels during the Oestrous Cycle and Early Pregnancy. *Int J Mol Sci* **20**.
- Sommer, G, A Garten, S Petzold, AG Beck-Sickinger, M Bluher, M Stumvoll, and M Fasshauer** 2008 Visfatin/PBEF/Nampt: structure, regulation and potential function of a novel adipokine. *Clinical Science* **115** 13-23.
- Tao, X, Y Liang, XM Yang, JH Pang, ZJ Zhong, XH Chen, YK Yang, K Zeng, RM Kang, YF Lei, SC Ying, JJ Gong, YR Gu, and XB Lv** 2017 Transcriptomic profiling in muscle and adipose tissue identifies genes related to growth and lipid deposition. *Plos One* **12**.
- Tummaruk, P, N Lundeheim, S Einarsson, and AM Dalin** 2001 Effect of birth litter size, birth parity number, growth rate, backfat thickness and age at first mating of gilts on their reproductive performance as sows. *Animal Reproduction Science* **66** 225-237.
- Tummaruk, P, W Tantasuparuk, A Techakumphu, and A Kunavongkrit** 2007 Age, body weight and backfat thickness at first observed oestrus in crossbred Landrace x Yorkshire gilts, seasonal variations and their influence on subsequent reproductive performance. *Animal Reproduction Science* **99** 167-181.

- Vandesompele, J, K De Preter, F Pattyn, B Poppe, N Van Roy, A De Paepe, and F Speleman** 2002 Accurate normalization of real-time quantitative RT-PCR data by geometric averaging of multiple internal control genes. *Genome Biology* **3**.
- Verrotti, A, F Basciani, D Trotta, M De Simone, G Morgese, and F Chiarelli** 2003 Serum leptin levels in girls with precocious puberty. *Diabetes Nutrition & Metabolism* **16** 125-129.
- Watanabe, T, K Watanabe-Kominato, Y Takahashi, M Kojima, and R Watanabe** 2017 Adipose Tissue-Derived Omentin-1 Function and Regulation. *Compr Physiol* **7** 765-781.
- Wood, JD, M Enser, AV Fisher, GR Nute, PR Sheard, RI Richardson, SI Hughes, and FM Whittington** 2008 Fat deposition, fatty acid composition and meat quality: A review. *Meat Science* **78** 343-358.
- Xing, K, KJ Wang, H Ao, SK Chen, Z Tan, Y Wang, Z Xitong, T Yang, FX Zhang, YB Liu, HM Ni, XH Sheng, XL Qi, XG Wang, Y Guo, and CD Wang** 2019 Comparative adipose transcriptome analysis digs out genes related to fat deposition in two pig breeds. *Scientific Reports* **9**.
- Zurita-Cruz, JN, MA Villasis-Keever, L Damasio-Santana, L Manuel-Apolinar, E Nishimura-Meguro, AD Rivera-Hernandez, E Garrido-Magana, A Gutierrez-Gonzalez, and A Poblano-Alcala** 2017 Relationship between Serum Leptin Levels and Weight Gain in Girls with Central Precocious Puberty at 1-Year Follow-Up. *Endocrine Practice* **23** 519-525.

Table 1: Oligonucleotide primer sequences

Gene	Product size (bp)	Forward	Reverse	Number of accession	Efficiency
<i>LEP</i>	101	5'- AGGGTCACCGGTTTGACTT -3'	5'- AGACTGGTGAGGATCTGTTGGTAGA -3'	NM_213840.1	1.95
<i>LEPRLF</i> (Long Form)	71	5'- AAGAGTGCGGTGCCCATTC -3'	5'- GTGAACAGCTCTCCTGGAGGAT -3'	NM_001024587.1	1.90
<i>ADIPOQ</i>	64	5'- GCTGTACTCTTCACCTACGACCAGTA -3'	5'- CCAGACTTGGTCCCCCTTCT -3'	NM_214370.1	2.00
<i>ADIPOR1</i>	74	5'- GCCATGGAGAAGATGGAGGA -3'	5'- AGCACGTCTGACGGGATGA -3'	NM_001007193.1	1.90
<i>ADIPOR2</i>	71	5'- TGTTCCGCCACCCCTCAGTAT -3'	5'- AATGATTCCACTCAGGCCCA -3'	NM_001007192.1	1.85
<i>NAMPT</i>	71	5'- TGCTGATCCCAACAAAAGGT -3'	5'- AAATTCCTCCTGGTGTCTCT -3'	DQ001974	2.00
<i>RARRES2</i>	147	5'- AGTTCACAAGCACCCACCC -3'	5'- GCTTTCTTCAGTCCCTCTT -3'	EU660865.1	1.90
<i>CMKLR1</i>	137	5'- CTAACCATCCCTGCCTCCCT -3'	5'- ATCCTGACCACCTGCCTTC -3'	EU660866.2	1.90
<i>GPR1</i>	168	5'- CCACCCTGTCTTATCTCATCGG -3'	5'- AGGATCTTGCTCGTGAAGTTGT -3'	NM001190244.1	2.00
<i>CCRL2</i>	149	5'- AGCACCAGAGGATGACTATG -3'	5'- TTGTCCAGGAGGCCAACAA -3'	NM001001617.1	1.85
<i>APLN</i>	117	5'- AAGGCAACGTCCGCTATTG -3'	5'- ATGGGGCCCTTGTTGGAGA -3'	XM_003360446.4	2.00
<i>APLNR</i>	188	5'- ACCTTGGTGCCGTTCTCGG -3'	5'- CTCAGTCTCGACCGTACTCT -3'	XM_021082015.1	1.95
<i>RETN</i>	149	5'- ATGAAGGCTCTCTCCCTCCT -3'	5'- TTCCAGGCCAATGTTCTCTAA -3'	NM_213783.2	1.85
<i>TLR4</i>	165	5'- TCAGTTCTCACCTTCTCCTG -3'	5'- GTTCATTCTCACCCAGTCTTC -3'	KF460453.1	2.00
<i>ROR1</i>	149	5'- GGATCCAATCAGGAAGCAA -3'	5'- GTTGGCGTCTCTAGCAAAG -3'	XM_021097759.1	1.85
<i>CAP1</i>	100	5'- ATTATGGCTGACATGCAAAA -3'	5'- CTCCATATCCACAGTGTGTG -3'	XM_003127824	1.95
<i>SERPINA12</i>	149	5'-GCTGTGAGTCGTGACCAAGT -3'	5'- CACAGAGATGCTCCAAGG -3'	XM_013978403.2	2.00
<i>HSPA5</i>	344	5'- CATCGAGTTGGCTTCCGTG -3'	5'- GTCAGCAGGAGGGCTTCGC -3'	X92446.1	1.95
<i>YWHAZ</i>	178	5'- ATGCAACCAACACATCCTATC -3'	5'- GCATTATTAGCGTGTCTT -3'	DQ178130]	2.00
<i>PPIA</i>	171	5'- CACAAACGGTCCAGTTTT -3'	5'- TGTCCACAGTCAGCAATGGT -3'	NM_214353.1	1.85
<i>SDHA</i>	100	5'- TCCGACTGGCTGGGGACCA -3'	5'- GTTCTGTGAACGGCATGCC -3'	DQ402993	2.00

Table 2: List of primary and secondary antibodies used for protein detection by western blot.

Primary antibodies	Dilution	Supplier	Host	Molecular weight (kDa)	References
Vinculin	1/1000	Sigma (hVIN-1)	Mouse	110	Reverchon, et al. 2014
Chemerin	1/1000	Abcam (ab203040)	Rabbit	16	Smolinska <i>et al.</i> , 2019
CMKLR1	1/1000	Abcam (ab230442)	Rabbit	42	Smolinska <i>et al.</i> , 2019
GPR1	1/1000	Abcam (ab169331)	Mouse	43	Smolinska <i>et al.</i> , 2019
CCRL2	1/1000	Abcam (ab85224)	Rabbit	56	Smolinska <i>et al.</i> , 2019
Apelin	1/1000	Santa Cruz (sc-293441)	Mouse	8	Różycka <i>et al.</i> , 2018
APLNR	1/1000	Santa Cruz (sc-33823)	Rabbit	42	Różycka <i>et al.</i> , 2018
Visfatin	1/1000	Phoenix (G-003-81)	Rabbit	52	Palin <i>et al.</i> , 2008
Omentin	1/1000	R&D system	sheep	40	Cloix, et al. 2014
Resistin	1/1000	Santa Cruz (sc-17575)	Rabbit	12	Rak <i>et al.</i> , 2015
TLR4	1/1000	Abcam (ab13556)	Rabbit	90	Dai, et al. 2016
Vaspin	1/1000	ThermoFisher (PA5-30989)	Rabbit	47	Kurowska, et al. 2019
HSPA5	1/1000	Santa Cruz (sc-13968)	Rabbit	78	Ferenc, et al. 2017
Leptin	1/1000	Santa Cruz (A-20)	Rabbit	16	Aquila, et al. 2008
Adiponectin	1/1000	Santa Cruz (sc-26496)	Rabbit	28	Rak <i>et al.</i> , 2017
ADIPOR1	1/1000	Santa Cruz (sc-46749)	Rabbit	42	Rak <i>et al.</i> , 2017
ADIPOR2	1/1000	Santa Cruz (sc-46751)	Rabbit	43	Rak <i>et al.</i> , 2017
Secondary antibodies					
Rabbit	1/50000	Biorad	Goat		
Sheep	1/10000	Biorad	Goat		
Mouse	1/50000	Interchim	Goat		

Table 3: Percentage of amino acid identity between pig and human for adipokines and adipokine receptors studied.

Adipokines or adipokines receptors	%	Accession number (human and pig) or references
Chemerin	83.4	EU660865 and NM_002889.4 , Huang <i>et al.</i> , 2010
CMKLR1	86.2	EU660866.2 and AY497547.1 , Huang <i>et al.</i> , 2010
GPR1	86.8	FJ234899 and EF577403.1 , Huang <i>et al.</i> , 2010
CCRL2	65.4	NM_001001617.1 and AY337001.1
Apelin	83.1	XM_003360446.4 (predicted) and NM_017413.5
APLNR	92.7	XM_021082015 (predicted) and NM_005161.4
Visfatin	97.1	Chen <i>et al.</i> , 2007
Omentin	81.7	EU652941 and AY549722
Resistin	75.2	Dai <i>et al.</i> , 2006
TLR4	73.1	AJ628065 and AH009665 , Alvarez, et al. 2006
ROR1	98.2	XM 021097759.1 (predicted) and XM 017001376.1
CAP1	100	XM 011504510.1 (predicted) and XM021095996.1
Vaspin	61.2	XM_013978403 (predicted) and AY326420
HSPA5	nd	nd and M19645
Leptin	86.0	Dai, et al. 2000
LEPR	83.9	NM_001024587 and U43168.1
Adiponectin	83.0	EF601160.1 and NM_001177800 , Ding <i>et al.</i> , 2004
ADIPOR1	97.0	Ding <i>et al.</i> , 2004
ADIPOR2	94.0	Ding, et al. 2004

Table 4: List of ELISA assays used for measurement of porcine plasma adipokine concentration.

Adipokine	Supplier	Host	Sensitivity of the used ELISA kit	References
Leptin	Cloud-Clone Corps distributed by Euromedex (SEA084PO)	Pig	less than 12.7pg/mL	Fan, et al. 2020
Total Adiponectin	BioVendor Research and Diagnostic Products (cat. # RD591023200R)	Pig	0.026 ng/ml	Rak <i>et al.</i> , 2017
Chemerin	FineTest, Wuhan Fine Biotech Co distributed by Euromedex (cat # EP0169)	Pig	0.1ng/ml	Smolinska <i>et al.</i> , 2019
Visfatin	MyBioSource (cat # MBS 7230081)	Pig	0.26ng/ml	
Resistin	Phoenix Pharmaceuticals Inc. (cat # EK-028-36)	Human	0.016–1 ng/ml	Rak, et al. 2015
Apelin	Sigma-Aldrich (cat. # RAB0018)	Human	5.84 pg/ml	Rak <i>et al.</i> , 2017
Omentin	Hölzel Diagnostika (cat # MBS750058)	Pig	0.05 ng/ml	
Vaspin	MyBioSource (cat # MBS 267502)	Pig	0.05 ng/ml	Kurowska <i>et al.</i> , 2019

Table 5: Age, body weight (BW), backfat thickness (BFT), ratio BFT/BW, age at the puberty and plasma leptin, adiponectin, visfatin, chemerin, omentin, apelin, resistin and vaspin concentrations in Large White (LW, n=16) and Meishan (MS, n=16) sows.

	LW	MS	<i>P</i> -value
Age (day)	214.7 ± 8.2	179.0 ± 6.1	0.001
Body weight (BW, kg)	126.5 ± 1.6	68.5 ± 1.6	0.0001
Backfat thickness (BFT, mm)	16.6 ± 0.3	24.3 ± 0.4	0.0001
Ratio BFT/BW	0.13 ± 0.002	0.35 ± 0.005	0.0001
Age at puberty	171.9 ± 2.8	86.1 ± 1.30	0.0001
Leptin (ng/ml)	0.81 ± 0.005	1.56 ± 0.07	0.0001
Adiponectin (µg/ml)	5.67 ± 0.15	2.55 ± 0.09	0.0001
Visfatin (ng/ml)	2.40 ± 0.15	2.66 ± 0.15	0.23
Chemerin (ng/ml)	168.24 ± 1.99	232.97 ± 3.51	0.0001
Omentin (ng/ml)	225.69 ± 4.80	129.44 ± 3.18	0.0001
Apelin (ng/ml)	1.02 ± 0.06	1.01 ± 0.05	0.87
Resistin (ng/ml)	3.15 ± 0.21	8.20 ± 0.24	0.0001
Vaspin (ng/ml)	0.45 ± 0.03	0.86 ± 0.04	0.0001

Results are represented as mean ± SEM. *P*-value was considerate significant when *P* < 0.05 (bold).

Table 6: Relative mRNA expression of adipokines (*LEP*, *ADIPOQ*, *NAMPT*, *RARRES2*, *ITLN1*, *APLN*, *RETN* and *SERPINA12*) and adipokine receptors (*LEPR*, *ADIPOR1*, *ADIPOR2*, *CMKLR1*, *CCRL2*, *GPR1*, *APLNR*, *TLR4*, *ROR1*, *CAP1* and *HSPA5*) in peri renal adipose tissue of LW and MS sows.

		LW	MS	<i>P</i> -value
Adipokines	<i>LEP</i>	0.02 ± 0.002	1.96 ± 0.5	0.001
	<i>ADIPOQ</i>	0.16 ± 0.02	0.02 ± 0.003	0.0002
	<i>NAMPT</i>	0.18 ± 0.05	0.20 ± 0.06	0.1
	<i>RARRES2</i>	2.37 ± 0.30	0.14 ± 0.03	0.0001
	<i>ITLN1</i>	2.61 ± 0.75	0.02 ± 0.08	0.002
	<i>APLN</i>	0.15 ± 0.03	2.19 ± 0.84	0.0005
	<i>RETN</i>	0.07 ± 0.01	2.47 ± 0.56	0.0001
	<i>SERPINA12</i>	0.43 ± 0.03	2.16 ± 0.17	0.00001
Adipokine receptors	<i>LEPR</i>	1.85 ± 0.28	0.16 ± 0.02	0.0001
	<i>ADIPOR1</i>	0.14 ± 0.02	0.62 ± 0.13	0.001
	<i>ADIPOR2</i>	0.04 ± 0.02	0.02 ± 0.004	0.01
	<i>CMKLR1</i>	0.11 ± 0.02	0.03 ± 0.006	0.0001
	<i>CCRL2</i>	0.07 ± 0.02	0.12 ± 0.02	0.002
	<i>GPR1</i>	0.13 ± 0.009	0.22 ± 0.01	0.05
	<i>APLNR</i>	0.08 ± 0.02	0.08 ± 0.007	0.77
	<i>TLR4</i>	0.08 ± 0.002	0.06 ± 0.009	0.01
	<i>ROR1</i>	0.03 ± 0.007	0.05 ± 0.001	0.001
	<i>CAP1</i>	0.02 ± 0.004	0.08 ± 0.03	0.001
	<i>HSPA5</i>	0.76 ± 0.17	5.62 ± 0.98	0.0007

Results are represented as mean ± SEM. *P*-value was considerate significant when $P < 0.05$ (bold).

Table 7: Pearson correlation coefficient (*r*) calculated between the backfat thickness and plasma adipokines concentration (leptin, adiponectin, visfatin, chemerin, omentin, apelin, resistin and vaspin) in both LW and MS sows.

		LW	MS
Leptin	<i>r</i>	0.78	0.90
	<i>P</i>	0.002	0.0001
Adiponectin	<i>r</i>	-0.95	-0.98
	<i>P</i>	0.0001	0.0001
Visfatin	<i>r</i>	0.15	0.07
	<i>P</i>	0.59	0.79
Chemerin	<i>r</i>	0.91	0.92
	<i>P</i>	0.0001	0.0001
Omentin	<i>r</i>	0.06	-0.38
	<i>P</i>	0.84	0.15
Apelin	<i>r</i>	-0.06	-0.22
	<i>P</i>	0.82	0.42
Resistin	<i>r</i>	0.14	-0.06
	<i>P</i>	0.62	0.83
Vaspin	<i>r</i>	0.28	-0.006
	<i>P</i>	0.31	0.98

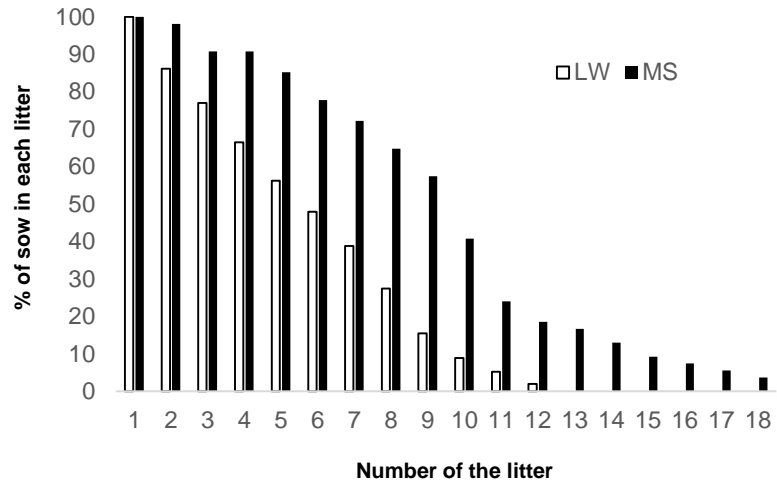
The correlation was noted “*r*” and *P*-value (*P*) was considerate significant if $P < 0.05$ (bold).

Table 8: Pearson correlation coefficient (*r*) calculated between the age of puberty and plasma adipokines concentration (leptin, adiponectin, visfatin, chemerin, omentin, apelin, resistin and vaspin) in both LW and MS sows.

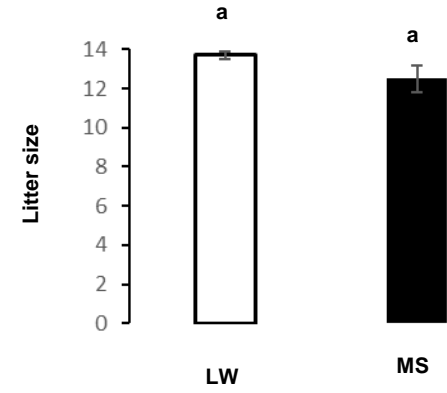
		LW	MS
Leptin	<i>r</i>	-0.80	-0.97
	<i>P</i>	0.0001	0.0001
Adiponectin	<i>r</i>	0.90	0.91
	<i>P</i>	0.0001	0.0001
Visfatin	<i>r</i>	0.06	-0.02
	<i>P</i>	0.80	0.93
Chemerin	<i>r</i>	-0.91	-0.83
	<i>P</i>	0.0001	0.0001
Omentin	<i>r</i>	0.15	-0.35
	<i>P</i>	0.59	0.20
Apelin	<i>r</i>	-0.22	-0.20
	<i>P</i>	0.40	0.45
Resistin	<i>r</i>	0.18	-0.18
	<i>P</i>	0.51	0.50
Vaspin	<i>r</i>	0.29	0.04
	<i>P</i>	0.28	0.90

The correlation was noted “*r*” and *P*-value (*P*) was considerate significant if $P < 0.05$ (bold).

A.



B.



C.

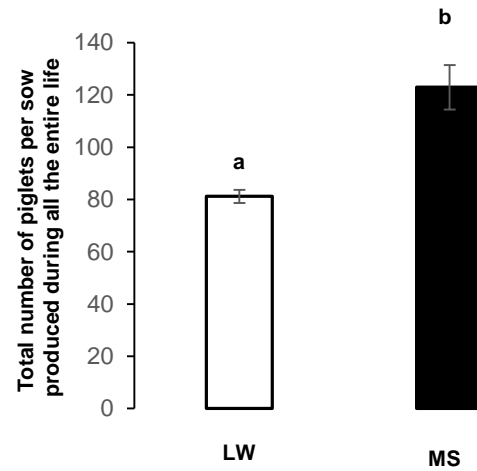
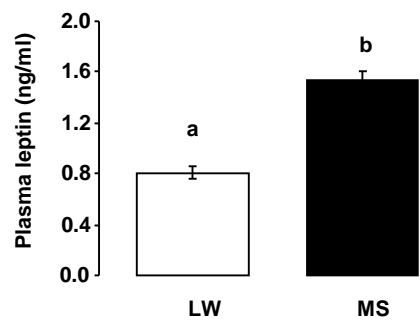
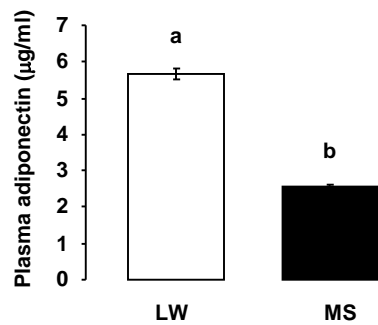


Figure 1

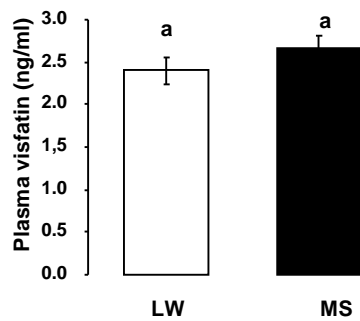
A. Leptin



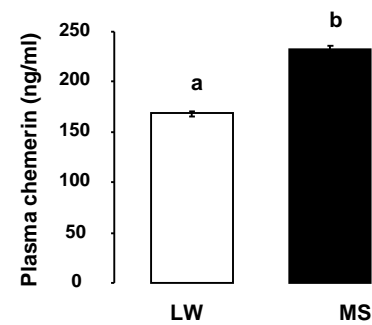
B. Adiponectin



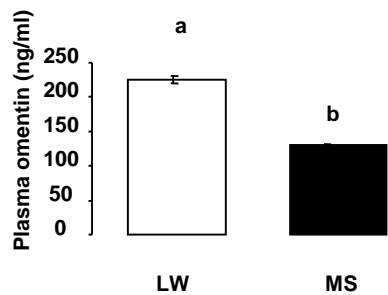
C. Visfatin



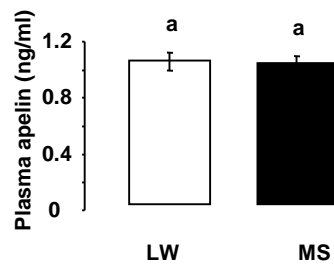
D. Chemerin



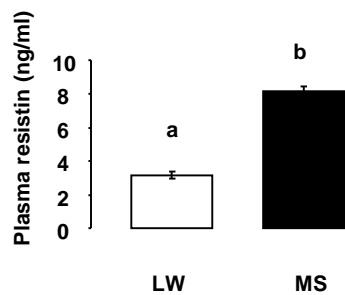
E. Omentin



F. Apelin



G. Resistin



H. Vaspin

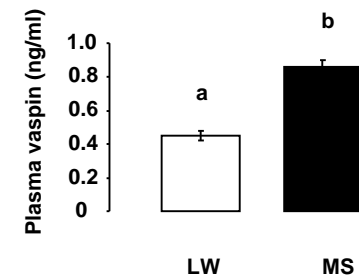


Figure 2

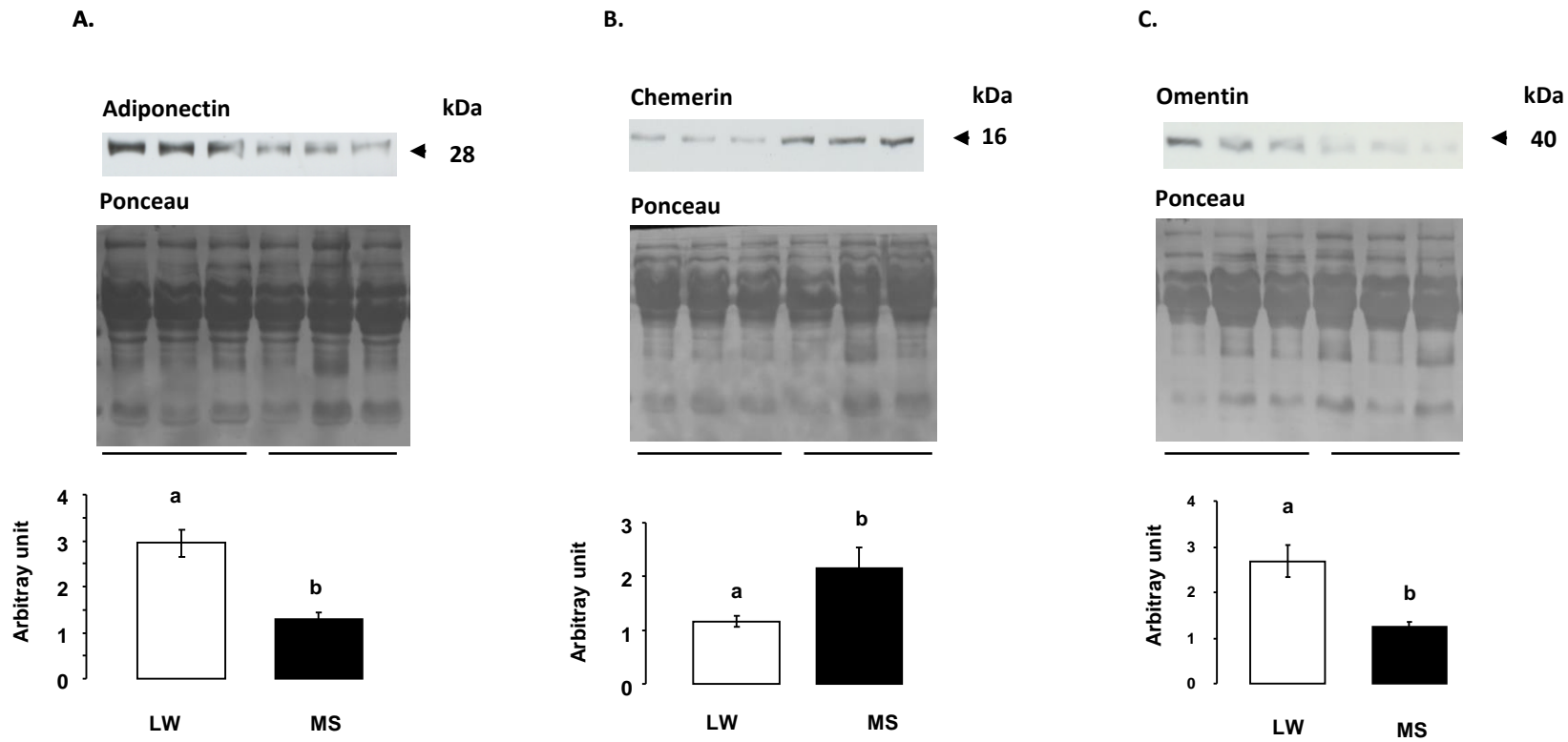


Figure 3

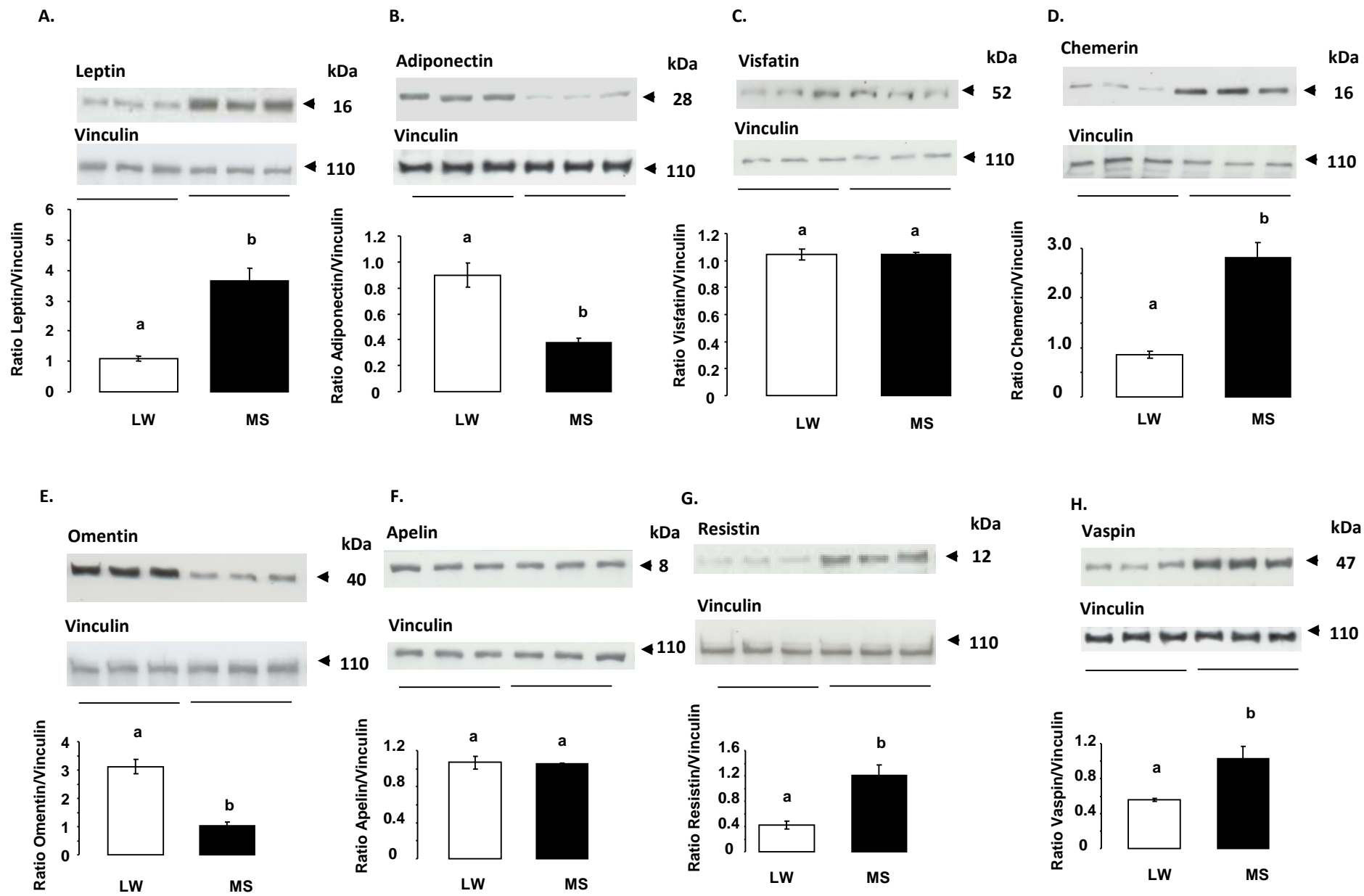


Figure 4

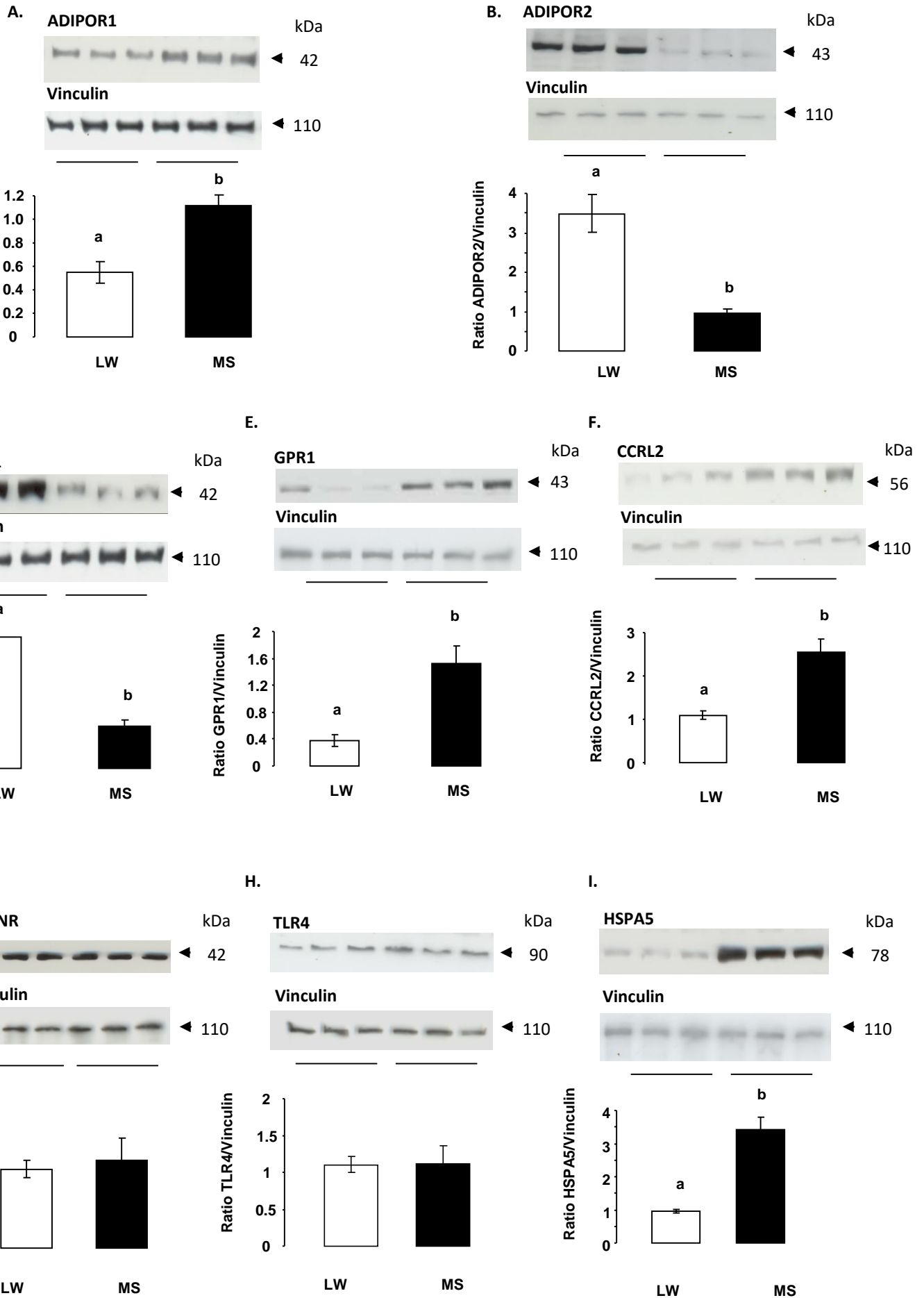


Figure 5