



**HAL**  
open science

# AQUAEXCEL2020: a network of research infrastructures for the benefit of European Aquaculture

Marc Vandeputte

► **To cite this version:**

Marc Vandeputte. AQUAEXCEL2020: a network of research infrastructures for the benefit of European Aquaculture. Aquaculture Europe 2016, Sep 2016, Edinburgh, United Kingdom. hal-03155187

**HAL Id: hal-03155187**

**<https://hal.inrae.fr/hal-03155187v1>**

Submitted on 1 Mar 2021

**HAL** is a multi-disciplinary open access archive for the deposit and dissemination of scientific research documents, whether they are published or not. The documents may come from teaching and research institutions in France or abroad, or from public or private research centers.

L'archive ouverte pluridisciplinaire **HAL**, est destinée au dépôt et à la diffusion de documents scientifiques de niveau recherche, publiés ou non, émanant des établissements d'enseignement et de recherche français ou étrangers, des laboratoires publics ou privés.



# **AQUAEXCEL2020: A NETWORK OF RESEARCH INFRASTRUCTURES FOR THE BENEFIT OF EUROPEAN AQUACULTURE**

**Marc VANDEPUTTE**  
**AQUAEXCEL<sup>2020</sup> coordinator**  
**INRA, France**

**Edinburgh, 23 sept. 2016**

# AQUAEXCEL<sup>2020</sup> – At a glance

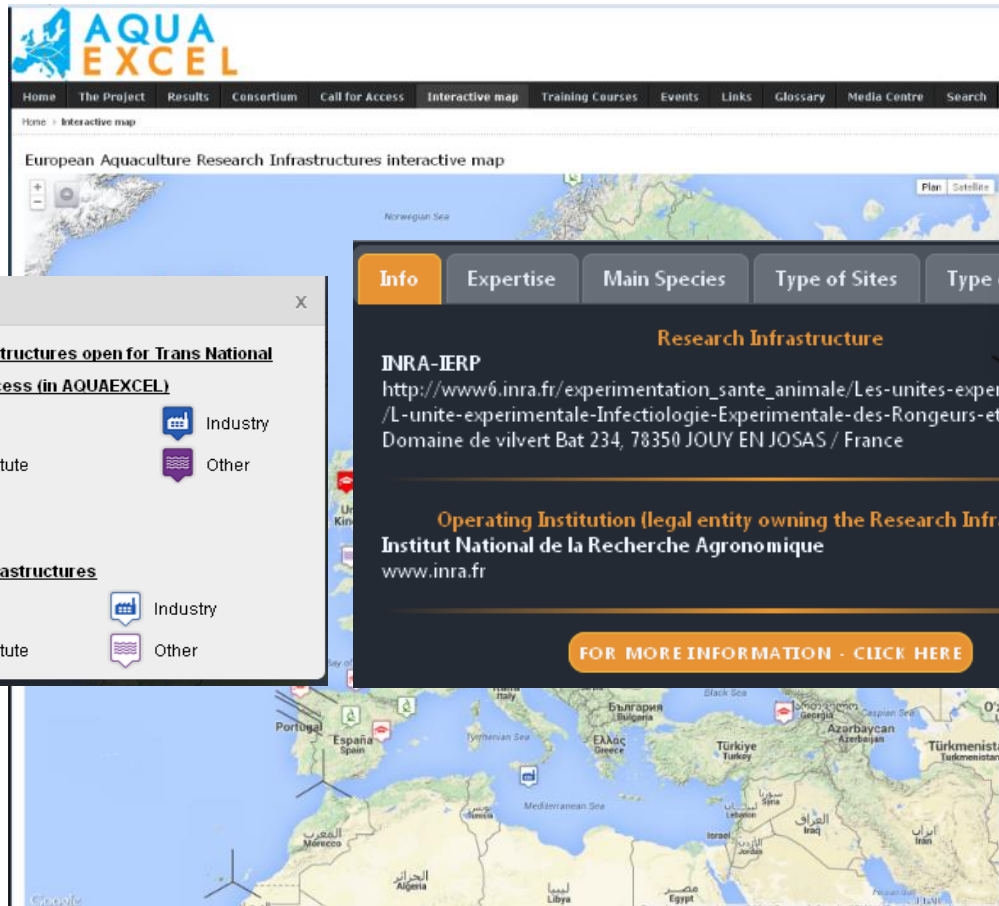
## Aquaculture Infrastructures for Excellence in European Fish Research (towards 2020)

AQUAEXCEL	AQUAEXCEL <sup>2020</sup>
2011-2015 (4 years)	2015-2020 (5 years)
17 partners, 27 facilities	22 partners, 39 facilities
9.2 M€ grant	9.7 M€ grant

**Main goal:** to integrate and open the key aquaculture research infrastructures in Europe, covering all EU fish culture systems and competences

# FP7AQUAEXCEL legacy

## The RI Map on [www.aquaexcel.eu](http://www.aquaexcel.eu)



Currently 108 entries

Interactive menu

Searchable

Detailed information available



# FP7 AQUAEXCEL Results

## Access your infrastructure from your living room

IMARES



NOFIMA



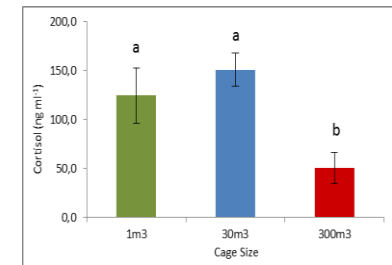
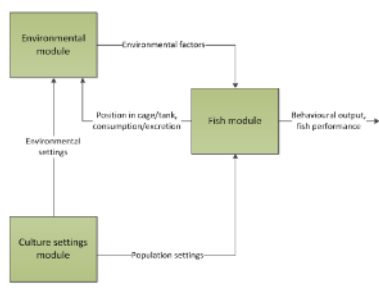
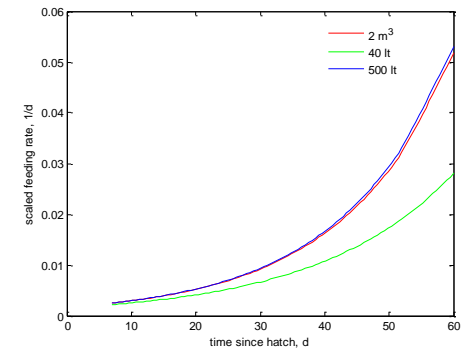
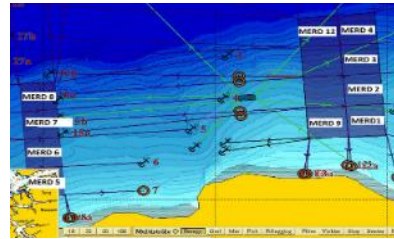
SINTEF/ACE

WUR



# FP7 AQUAEXCEL Results

## Effect of experimental unit size on results



# FP7AQUAEXCEL research

## Isogenic fish lines: the lab mouse of fish research



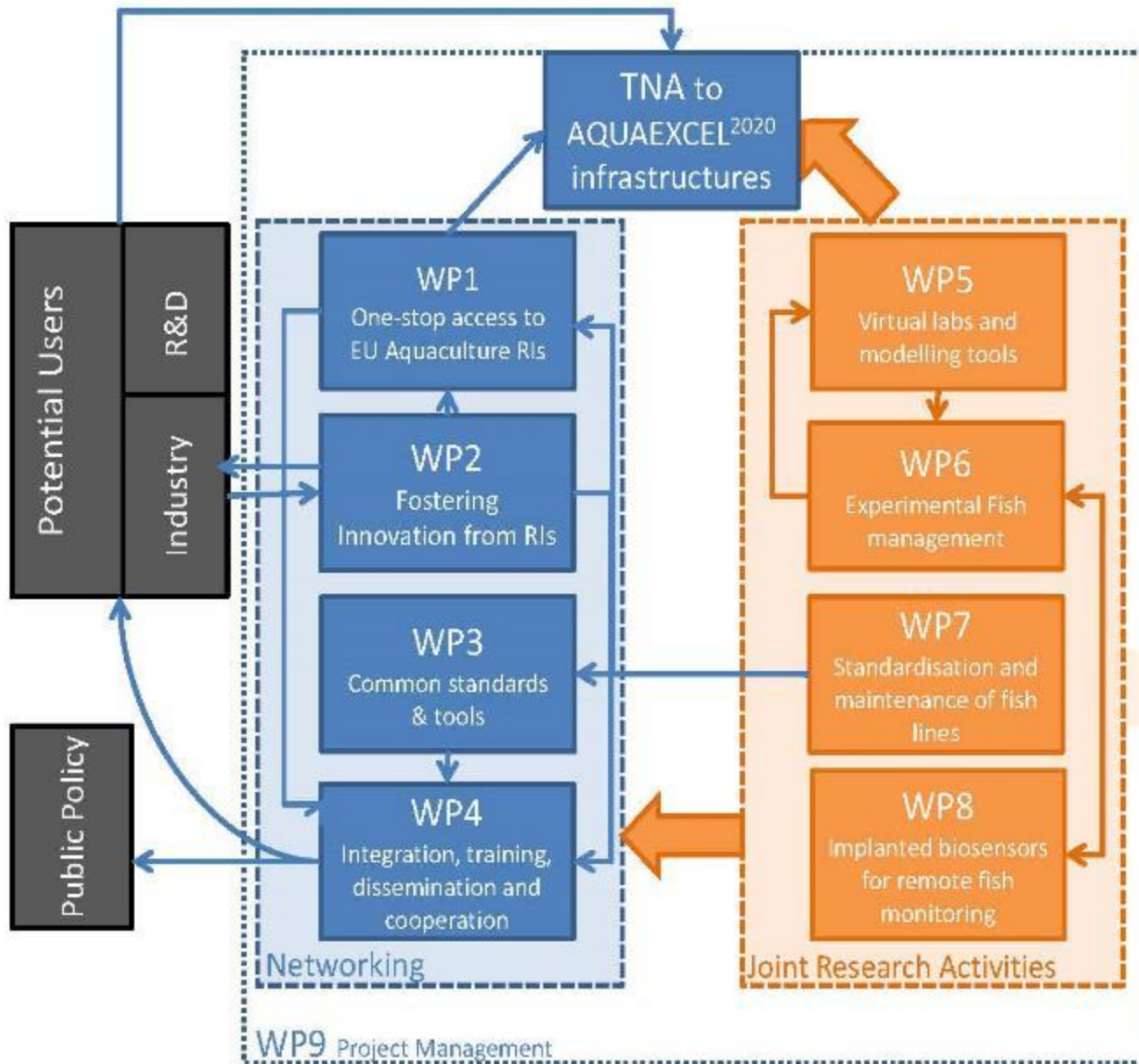
Already there:









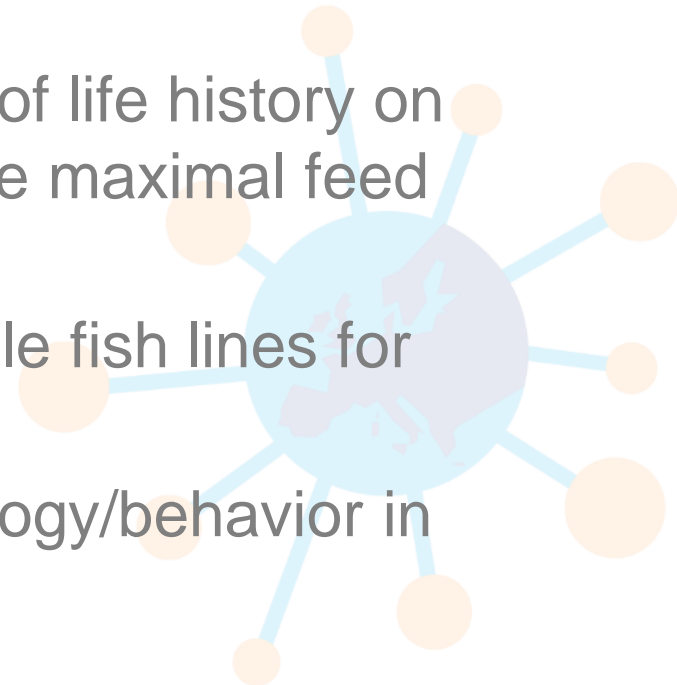


# Project structure

Four workpackages focus on strengthening joint research activities, whilst four more involve TNA, industry links, developing common standards and tools and providing training and dissemination

# Joint research for better experiments

- Virtual modelling of aquaculture experimental facilities to help design/interpret experiments
- Experimental fish management: effect of life history on experimental outcomes, how to achieve maximal feed intake
- Development and maintenance of stable fish lines for experimental purposes
- Internal sensors to monitor fish physiology/behavior in real time



# WP1: Transnational Access

## The numbers

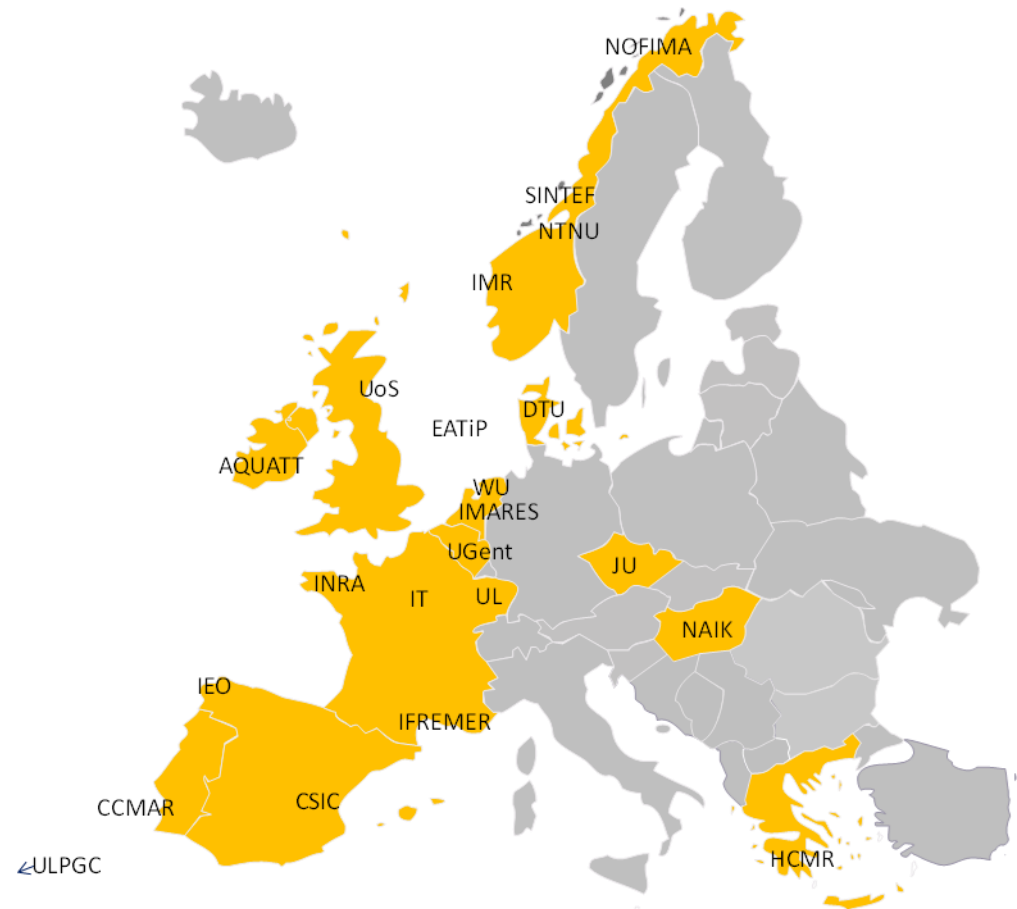
21 Host Organisations

39 Research Installations

~170 Funded Projects

~217 Users

~300 Applications





**ARE YOU INVOLVED IN AQUACULTURE RESEARCH?**

**AQUA EXCEL 2020**

**FIRST CALL**

**Apply for Fully EC-Funded Access to Top-Class Research Infrastructures with AQUAEXCEL 2020**

**AQUAEXCEL 2020 offers access to top-class research infrastructures for both basic and applied research, giving aquaculture research groups the opportunity to utilise AQUAEXCEL 2020's installations.**

The AQUAEXCEL 2020 project regularly invites proposals from European research groups for scientific research that utilises the installations of any of the participating Aquaculture Research Infrastructures.

These installations are made available to the research community for Teams with Access (TMA) with the support of the European Union's Horizon 2020 Research and Innovation Programme.

Interested researchers can propose aquaculture research projects that:

- Involve research on any of the available fish species at the selected aquaculture research infrastructure
- Are compliant with the CAHNP Strategic Research & Innovation Agenda
- Involve visits of one or two people to a research infrastructure that provides data others not available in their own country for periods of up to three months.

Access to the research infrastructures and associated travel and subsistence expenses will be paid for under the project.

**THE FIRST CALL FOR ACCESS IS NOW OPEN - DEADLINE FOR APPLICATIONS 29 JANUARY 2016**  
For more information: [www.aquaexcel.eu](http://www.aquaexcel.eu)

**AVAILABLE RESEARCH INFRASTRUCTURES COVER**

- WATER ENVIRONMENT**  
Ecological Health and simple and 2D/3D Water Analysis
- FISH SPECIES**  
Salmon, Trout, Sea Bream, Sea Bass, Gilthead Sea loach, Carp, etc.
- FIELDS OF EXPERTISE**  
Nutrition, Pathology, Health, Welfare, Genetic, Reproduction, Health and Environment, etc.
- AQUACULTURE SYSTEMS**  
Recirculation, Flow, Cage, Hybrid and Pond Systems
- MULTIPLE SCALES**  
Small, Medium and Large Scale Experiments

**AQUA EXCEL**  
[WWW.AQUAEXCEL.EU](http://WWW.AQUAEXCEL.EU)

The AQUA EXCEL 2020 project is funded by the European Union's Horizon 2020 Research and Innovation Programme under grant agreement No. 652831. The project information is available on the project's website: [www.aquaexcel.eu](http://www.aquaexcel.eu)

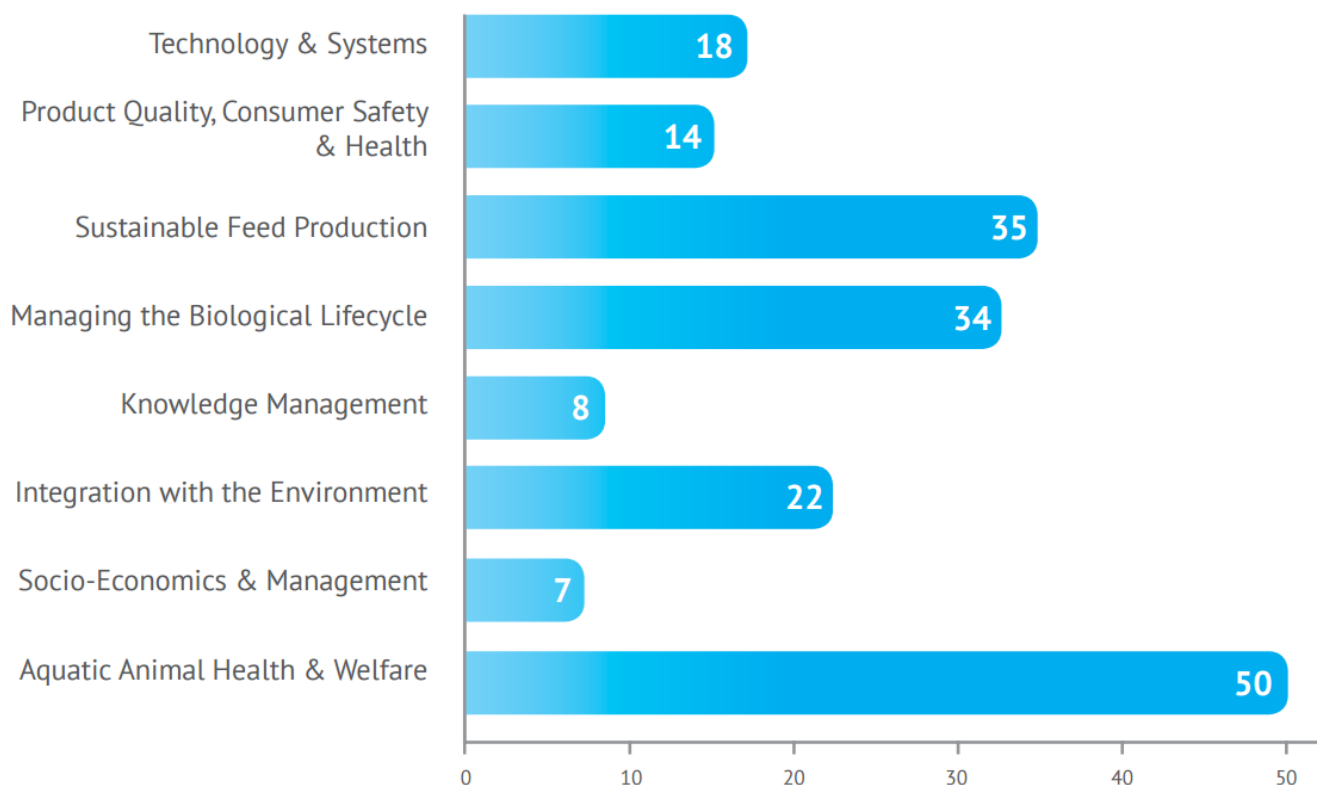
# The TNA offer

## Access to the partner research installations for

- Researchers from public & private organisations
- Maximum 2 people for up to 3 months (remote access also possible)
- Use of facilities not available in own country
- Free (travel and subsistence expenses paid)

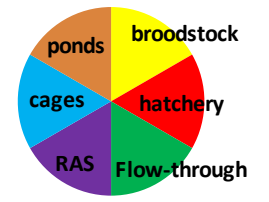


# AQUAEXCEL (FP7) Projects by theme



\*Some TNA projects addressed more than one area

# All types of infrastructures



**New in AQUAEXCEL 2020:  
Disease challenge testing**



# TNA is for you !

All details on [www.aquaexcel.eu](http://www.aquaexcel.eu)

- Check available experimental facilities – and contact them to build your project
- Help available (Orientation Committee) to find the appropriate team(s)
- An simple online project submission system
- Once selected (expected success rate: 60%) project can start with all experimental work + travel paid
- Report results at the end. Projects with the highest application potential will be awarded support to be present in industry meetings/conferences

# Thank You



**Marc Vandeputte**  
**marc.vandeputte@inra.fr**

