



HAL
open science

Phase Correction in IDEAL-type Rapid Spectroscopic Imaging

Nour El Sabbagh, Carine Chassain, H el ene Ratiney, Guilhem Pag es, J.-M. Bonny

► **To cite this version:**

Nour El Sabbagh, Carine Chassain, H el ene Ratiney, Guilhem Pag es, J.-M. Bonny. Phase Correction in IDEAL-type Rapid Spectroscopic Imaging. ISMRM 2021 Annual meeting, May 2021, Online, France. hal-03238486

HAL Id: hal-03238486

<https://hal.inrae.fr/hal-03238486>

Submitted on 27 May 2021

HAL is a multi-disciplinary open access archive for the deposit and dissemination of scientific research documents, whether they are published or not. The documents may come from teaching and research institutions in France or abroad, or from public or private research centers.

L'archive ouverte pluridisciplinaire **HAL**, est destin ee au d ep ot et  a la diffusion de documents scientifiques de niveau recherche, publi es ou non,  emanant des  tablissements d'enseignement et de recherche fran ais ou  trangers, des laboratoires publics ou priv es.

Phase Correction in IDEAL-type Rapid Spectroscopic Imaging

Nour EL SABBAGH¹, Carine CHASSAIN¹, H  l  ne RATINEY², Guilhem PAGES¹, and Jean-Marie BONNY¹

¹INRAE, AgroResonance, UR QuaPA, F-63122, Saint-G  nes-Champanelle, France, ²University of Lyon, INSA-Lyon, Universit   Claude Bernard Lyon 1, UJM Saint-Etienne, CNRS, Inserm, CREATIS UMR 5220, U1206, F-69621, Lyon, France

Synopsis

In IDEAL-type sequences, spectral selective pulses are done with an excitation frequency f_e dependent on the slice position, and the acquisition is applied with a reception frequency f_r . For a proper spectral study, the phase observed during the different evolution times of each shot (TE) has to be dependent only on the CS. A phase coherent f_e - f_r switch is applied throughout the pulse sequence. However, depending on the frequency commutation position, phase errors are accumulated, disturbing the CS study. This presentation elucidates the impact of the commutation's position and how to correct to resulting phase errors.

Introduction

In order to reduce acquisition time and increase spectral bandwidth in MRSI, it is useful to acquire several experiments with slightly different echo timing, as in IDEAL-type sequences (multi-shot) [1] presented in Figure 1. Here, the chemical shift (CS) information is acquired in multi-shot, where the echo time (TE) is incremented once per shot to sample the signal nonlinearly. The excitation is done with a spectral selective pulse with an excitation frequency f_e , and the acquisition is applied with a spiral-OUT trajectory with a reception frequency f_r . A coherent switch between both frequencies has to be applied throughout the pulse sequence. For proper CS study, the phase acquired during TE, at t_2 , should only depend on the CS and not be prone to the influence of the pulse sequence. However, a spurious phase can be accumulated during the TE depending on the frequency commutation position leading to phase errors. This presentation aims to explain how the position of the frequency switch affects the spectral study and how to overcome the resulting phase errors.

Theory

Firstly, during the excitation time, the slice selective gradient is applied, making the excitation frequency f_e dependent on the slice position in the z-direction ($f_e \propto z$, $f_e=0$ for a centred slice $z=0$ and $f_e \neq 0$ for a shifted one). Secondly, the different echo times (TE) correspond to the evolution time where the CS's phase variation is studied through TE increment. Finally, during the acquisition time, f_r can be non-nil under certain circumstances explained in the presentation. If the phase's evolution during the different TEs must depend only on the CS for each shot, it can also depend on either f_e or f_r depending on when the emission/reception switching is performed. We present the three possible frequency-switch cases (see Figure 2): i) Acq-Switch, f_e - f_r commutation at t_2 ; ii) RF-Switch, f_e - f_r commutation at t_1 ; and iii) double 0-Switch, f_e -0 commutation at t_1 and 0- f_r commutation at t_2 . Using Acq-Switch or RF-Switch case leads to unwanted phase accumulation when f_e or f_r is non-nil, respectively. This spurious phase has to be eliminated from the acquired signal before spectroscopic image reconstruction. The double 0-Switch case leads to no phase accumulation, making the acquired signal free of sequence-dependent phase.

Method

IDEAL SPIRAL pulse sequence was applied at 11.7 T on a phantom composed of four syringes filled with either $[1-^{13}\text{C}]$ Pyruvic acid, $[1-^{13}\text{C}]$ Lactate, $[1-^{13}\text{C}]$ Alanine, or $[1-^{13}\text{C}]$ Urea fixed in 10% gelatine. Seven shots were applied with an echo time increment of 0.86 ms, determined through NSA analysis [1]. The spectroscopic (CS) images were reconstructed with the least square estimation approach described in [1]. The pulse sequence was applied using the Acq-Switch case for a centred (0 mm, $f_e=0$) and a shifted slice (-4 mm, $f_e=-533\text{Hz}$), and the RF-Switch case for the shifted one. Using spiral-OUT trajectory leads to a nil f_r .

Results

In Figure 3, each row presents each metabolite's ^{13}C image, superimposed on a ^1H reference image of the phantom. Row 1 presents the acquired images using the Acq-Switch case for the centred slice. The metabolic images are well reconstructed and correspond to the reference image. Row 2 presents the images generated for the shifted slice, where phase errors occur and the CS information is lost. Row 3 shows the same acquired images but after f_e phase correction. The metabolic images are, therefore, well reconstructed. Row 4 presents the images acquired using the RF-Switch case for a shifted slice. As $f_r=0$, no unwanted phase was accumulated, and the metabolic images are successfully reconstructed without any phase correction.

Conclusion

During the different evolution times (TE), unwanted phase shifts are likely to be accumulated due to non-nil excitation or reception frequency (f_e or f_r) for Acq- or RF-Switch case, respectively. These phase errors disrupt the CS information and lead to incorrect metabolic image reconstruction. Phase correction has to be applied by removing the spurious phase prone to the pulse sequence. The framework presented is general and it clarifies the different situations and possible solutions for phase errors

Acknowledgements

No acknowledgement found.

References

Figures

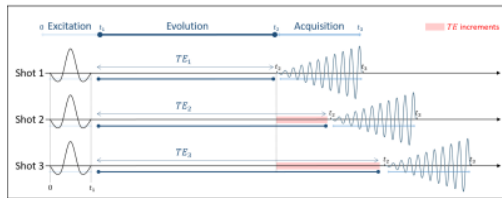


Figure 1: Illustration of the IDEAL SPIRAL spectral encoding scheme. It consists of Radiofrequency (RF) pulses applied during an excitation time (t_1), and acquisition with spiral-OUT spatial encoding (t_3-t_2) applied after an echo time ($TE=t_2-t_1$). Several shots are used to encode the spectral information, which is targeted during the evolution time (TE), while slightly increasing the TE after each shot (TE_m is the echo time of the m^{th} shot). Three shots are presented, but this pulse sequence is true for m shots.

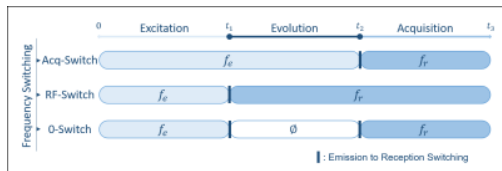


Figure 2: Illustration of the different cases of the emission/reception frequency switching during the pulse sequence timing, leading to different frequency dependence during the evolution times. Acq-Switch case: f_e-f_r switch before the acquisition at t_2 , and the CS behaviour detection is done in reference to f_e . RF-Switch case: f_e-f_r switch before the evolution time at t_1 , hence CS behaviour detection done in reference to f_r . Double 0-Switch case: f_e-0 switch for the evolution time at t_1 , $0-f_r$ switch at the end of it at t_2 .

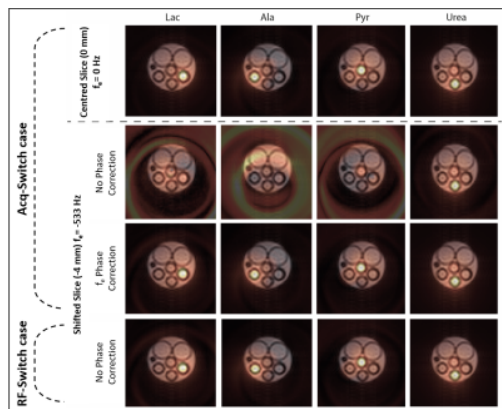


Figure 3: Reconstruction of the ^{13}C metabolite maps acquired with the IDEAL Spiral method. For a slice centred, the proper metabolic image reconstruction of the data acquired with the Acq-Switch case was performed with no correction (top row). Rows 2 and 3 are ^{13}C metabolite maps acquired by using the same switch case, but with a shifted slice (-4 mm) where phase errors occur, before and after phase correction, respectively. Row 4 the RF-Switch case was used where no correction is required and proper images are directly reconstructed.