



HAL
open science

Corrigendum: Loss-of-Function of a Tomato Receptor-Like Kinase Impairs Male Fertility and Induces Parthenocarpic Fruit Set

Hitomi Takei, Yoshihito Shinozaki, Ryoichi Yano, Sachiko Kashojiya, Michel Hernould, Christian Chevalier, Hiroshi Ezura, Tohru Ariizumi

► **To cite this version:**

Hitomi Takei, Yoshihito Shinozaki, Ryoichi Yano, Sachiko Kashojiya, Michel Hernould, et al.. Corrigendum: Loss-of-Function of a Tomato Receptor-Like Kinase Impairs Male Fertility and Induces Parthenocarpic Fruit Set. *Frontiers in Plant Science*, 2021, 12, pp.672086. 10.3389/fpls.2021.672086 . hal-03239527

HAL Id: hal-03239527

<https://hal.inrae.fr/hal-03239527>

Submitted on 27 May 2021

HAL is a multi-disciplinary open access archive for the deposit and dissemination of scientific research documents, whether they are published or not. The documents may come from teaching and research institutions in France or abroad, or from public or private research centers.

L'archive ouverte pluridisciplinaire **HAL**, est destinée au dépôt et à la diffusion de documents scientifiques de niveau recherche, publiés ou non, émanant des établissements d'enseignement et de recherche français ou étrangers, des laboratoires publics ou privés.



Distributed under a Creative Commons Attribution 4.0 International License



Corrigendum: Loss-of-Function of a Tomato Receptor-Like Kinase Impairs Male Fertility and Induces Parthenocarpic Fruit Set

OPEN ACCESS

Approved by:
Frontiers Editorial Office,
Frontiers Media SA, Switzerland

***Correspondence:**
Tohru Ariizumi
ariizumi.toru.ge@u.tsukuba.ac.jp

†These authors have contributed
equally to this work

Specialty section:
This article was submitted to
Plant Breeding,
a section of the journal
Frontiers in Plant Science

Received: 25 February 2021
Accepted: 10 March 2021
Published: 27 April 2021

Citation:
Takei H, Shinozaki Y, Yano R,
Kashojiya S, Hernould M, Chevalier C,
Ezura H and Ariizumi T (2021)
Corrigendum: Loss-of-Function of a
Tomato Receptor-Like Kinase Impairs
Male Fertility and Induces
Parthenocarpic Fruit Set.
Front. Plant Sci. 12:672086.
doi: 10.3389/fpls.2021.672086

Hitomi Takei^{1,2†}, **Yoshihito Shinozaki**^{1,2†}, **Ryoichi Yano**¹, **Sachiko Kashojiya**¹,
Michel Hernould^{3,4}, **Christian Chevalier**³, **Hiroshi Ezura**^{1,5} and **Tohru Ariizumi**^{1,5*}

¹ Graduate School of Life and Environmental Sciences, University of Tsukuba, Tsukuba, Japan, ² Japan Society for the Promotion of Science (JSPS), Kôjimachi, Japan, ³ UMR1332 BFP, Institut National de la Recherche Agronomique (INRA), Villenave-d'Ornon, France, ⁴ UMR1332 BFP, University of Bordeaux, Bordeaux, France, ⁵ Tsukuba-Plant Innovation Research Center, University of Tsukuba, Tsukuba, Japan

Keywords: *Solanum lycopersicum*, fruit set, male sterility, *in situ* hybridization, next generation sequencing, gene mapping

A Corrigendum on

Loss-of-Function of a Tomato Receptor-Like Kinase Impairs Male Fertility and Induces Parthenocarpic Fruit Set

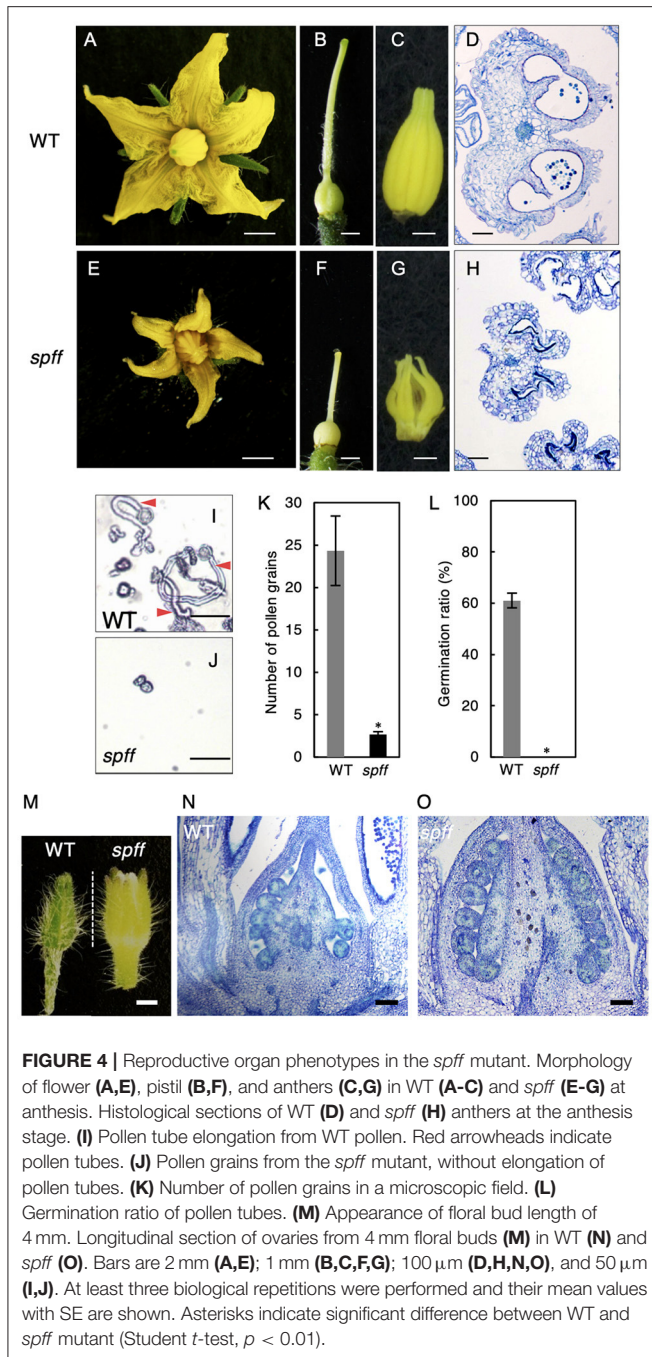
by Takei, H., Shinozaki, Y., Yano, R., Kashojiya, S., Hernould, M., Chevalier, C., et al. (2019). *Front. Plant Sci.* 10:403. doi: 10.3389/fpls.2019.00403

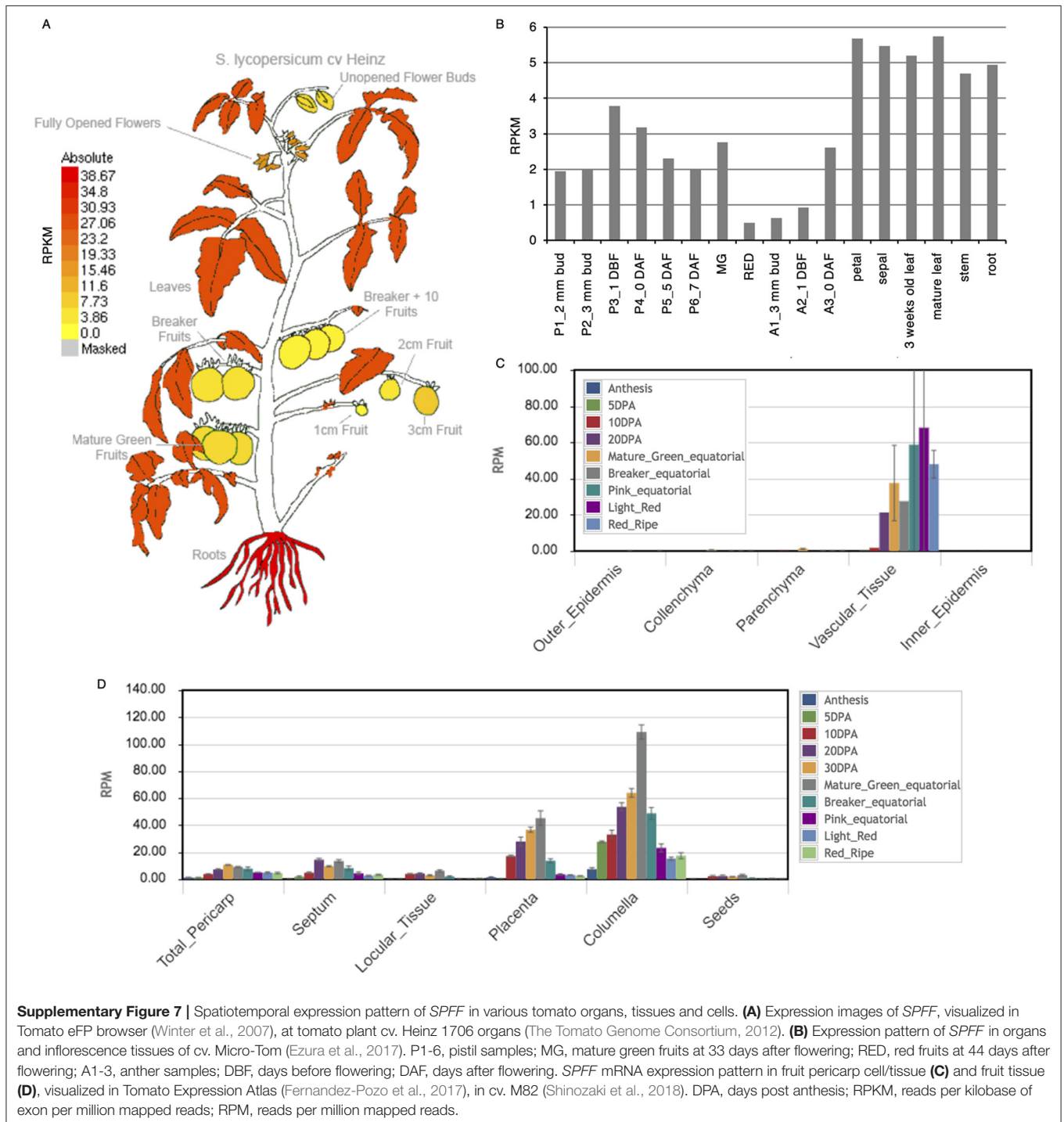
In the original article, there were mistakes in the legends for **Figure 4** and **Supplementary Figure 7** as published.

In the first two sentences of the legend to **Figure 4**, the letters attributed to the different parts of the figure were wrong. The correct legend appears below.

The axis labels in **Supplementary Figure 7B** were incorrectly formatted and its legend contained some typographical errors. The corrected **Supplementary Figure 7** and legend appear below.

The authors apologize for these errors and state that this does not change the scientific conclusions of the article in any way. The original article has been updated.





REFERENCES

Ezura, K., Ji-Seong, K., Mori, K., Suzuki, Y., Kuhara, S., Ariizumi, T., et al. (2017). Genome-wide identification of pistil-specific genes expressed during fruit set initiation in tomato (*Solanum lycopersicum*). *PLoS One* 12:e0180003. doi: 10.1371/journal.pone.0180003

Fernandez-Pozo, N., Zheng, Y., Snyder, S. I., Nicolas, P., Shinozaki, Y., Fei, Z., et al. (2017). The tomato expression atlas. *Bioinformatics* 33, 2397–2398. doi: 10.1093/bioinformatics/btx190

Shinozaki, Y., Nicolas, P., Fernandez-Pozo, N., Ma, Q., Evanich, D. J., Shi, Y., et al. (2018). High-resolution spatiotemporal transcriptome mapping

- of tomato fruit development and ripening. *Nat. Commun.* 25:364. doi: 10.1038/s41467-017-02782-9
- The Tomato Genome Consortium (2012). The tomato genome sequence provides insights into fleshy fruit evolution. *Nature* 485, 635–641. doi: 10.1038/nature11119
- Winter, D., Vinegar, B., Nahal, H., Ammar, R., Wilson, G. V., and Provart, N. J. (2007). An “Electronic Fluorescent Pictograph” browser for exploring and analyzing large-scale biological data sets. *PLoS One* 2:e718. doi: 10.1371/journal.pone.0000718

Copyright © 2021 Takei, Shinozaki, Yano, Kashojiya, Hernould, Chevalier, Ezura and Aritzumi. This is an open-access article distributed under the terms of the Creative Commons Attribution License (CC BY). The use, distribution or reproduction in other forums is permitted, provided the original author(s) and the copyright owner(s) are credited and that the original publication in this journal is cited, in accordance with accepted academic practice. No use, distribution or reproduction is permitted which does not comply with these terms.