



**HAL**  
open science

## Forest for biomass or for biodiversity: scenarios for solving conflicts in the French context

Marc Deconchat, Florin Malafosse, Floriane Clement

### ► To cite this version:

Marc Deconchat, Florin Malafosse, Floriane Clement. Forest for biomass or for biodiversity: scenarios for solving conflicts in the French context. Third ESP Europe Conference, Jun 2021, Tartu, Estonia. 11 p. hal-03280315

**HAL Id: hal-03280315**

**<https://hal.inrae.fr/hal-03280315>**

Submitted on 7 Jul 2021

**HAL** is a multi-disciplinary open access archive for the deposit and dissemination of scientific research documents, whether they are published or not. The documents may come from teaching and research institutions in France or abroad, or from public or private research centers.

L'archive ouverte pluridisciplinaire **HAL**, est destinée au dépôt et à la diffusion de documents scientifiques de niveau recherche, publiés ou non, émanant des établissements d'enseignement et de recherche français ou étrangers, des laboratoires publics ou privés.



➤ Forest for biomass or for biodiversity: scenarios for solving conflicts in the French context

Marc Deconchat; Florin Malafosse; Floriane Clément

[marc.deconchat@inrae.fr](mailto:marc.deconchat@inrae.fr)

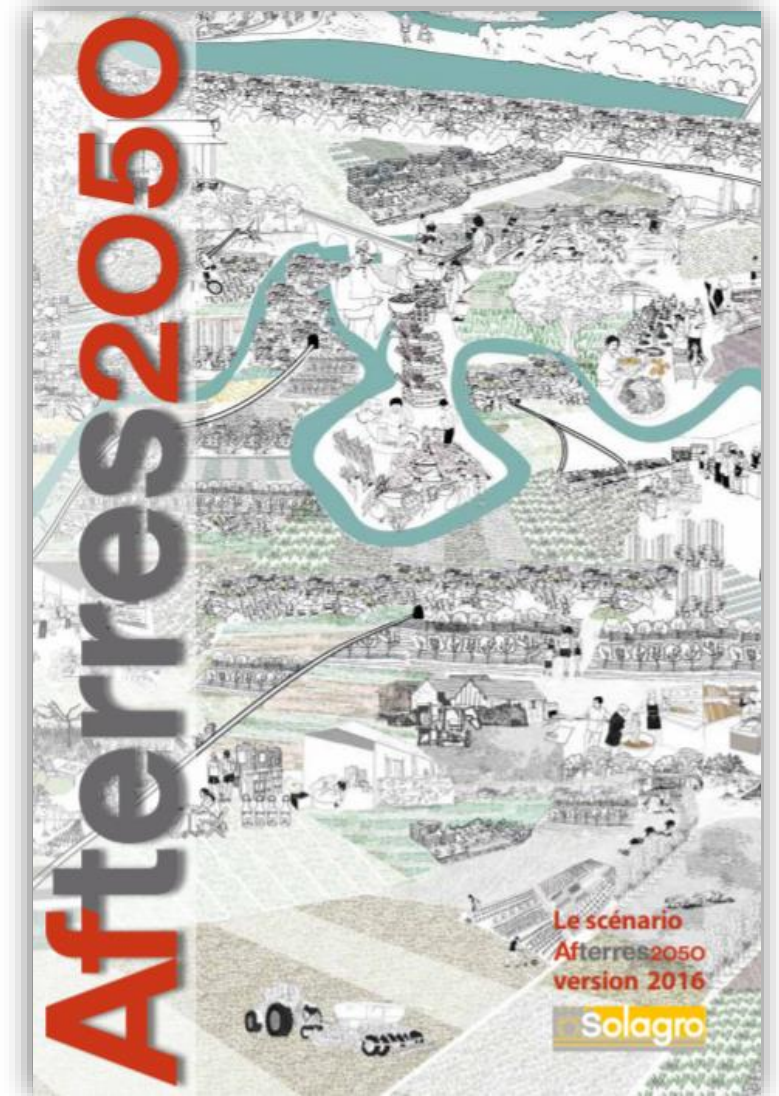
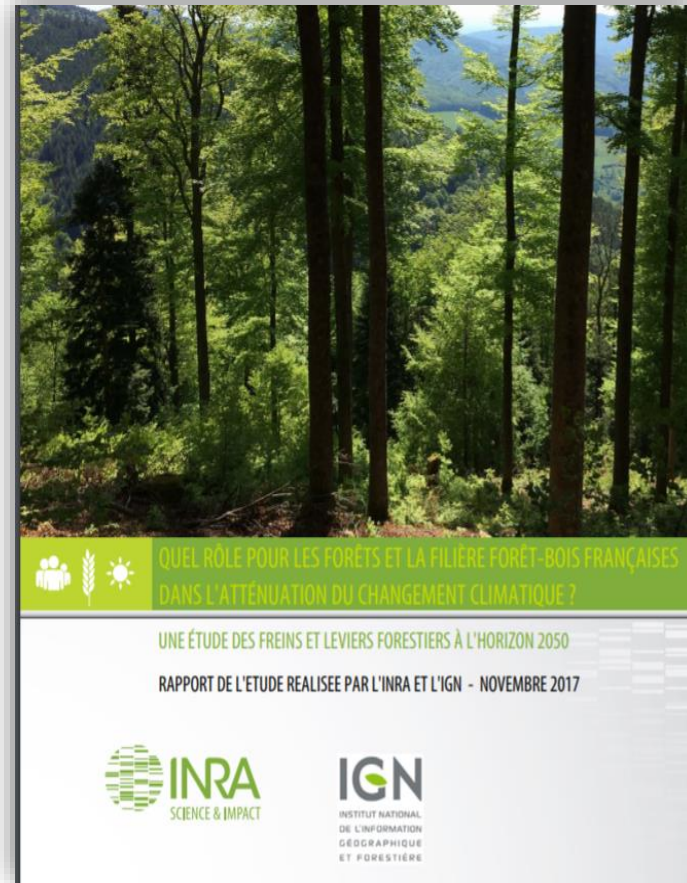
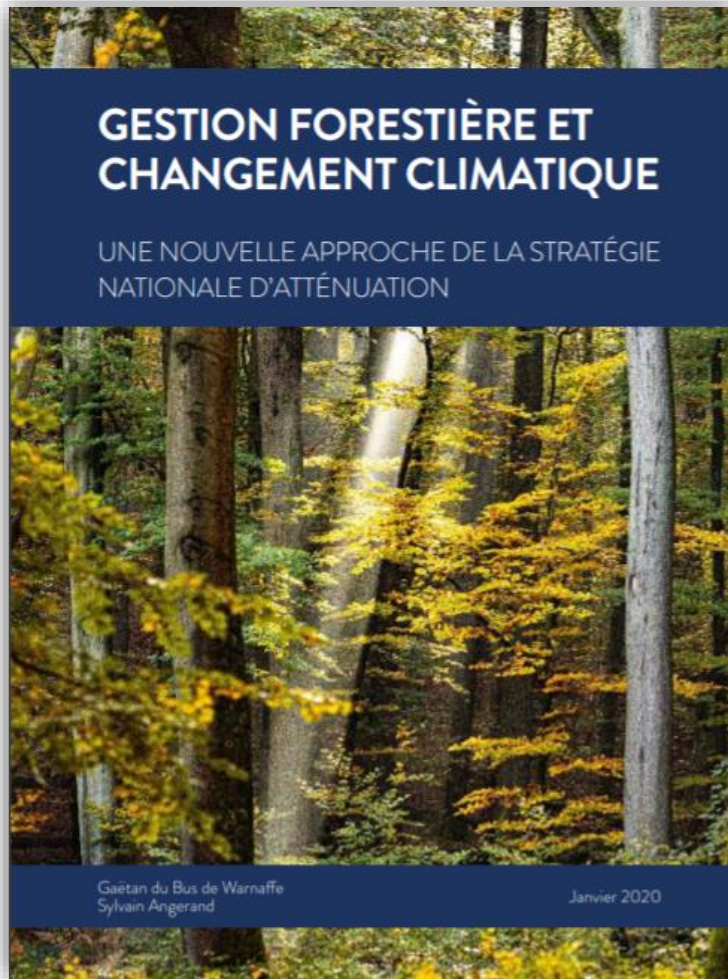
## ➤ Biomass and wood based products or biodiversity?



Forests for biomass or biodiversity  
7-06-2021 / ESP Tartu / Deconchat Marc



## ➤ Discrepancy between scenarios



**INRAE**

Forests for biomass or biodiversity  
7-06-2021 / ESP Tartu / Deconchat Marc



➤ Strong debates about the future of forests

# Forestiers et société : réflexions face aux critiques

Par Philippe Riou-Nivert, CNPF-IDF



## Sommaire

24 Les critiques socio-environnementales de la gestion forestière s'accroissent. Qu'en penser ?

26 La forêt, « bien commun » ?

27 Un « arbre intelligent » dans une « forêt naturelle »

« Foresters and society: reflections about critics »

In « Forêt entreprise », professional magazine May 2021

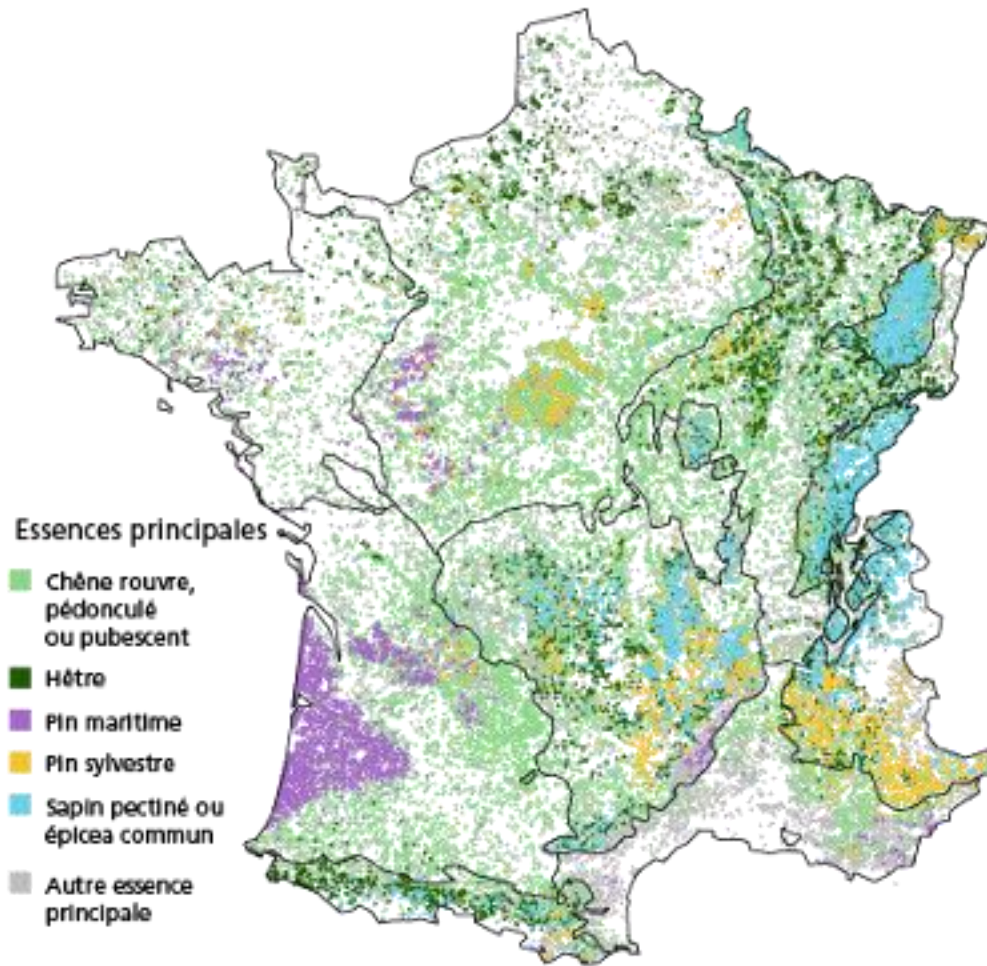
➤ 3 factors to be integrated in new scenarios

- Work at finer spatial scales
- Take risks into account
- Include the social dimensions





## ➤ Finer scales





## ➤ Risks



**INRAE**

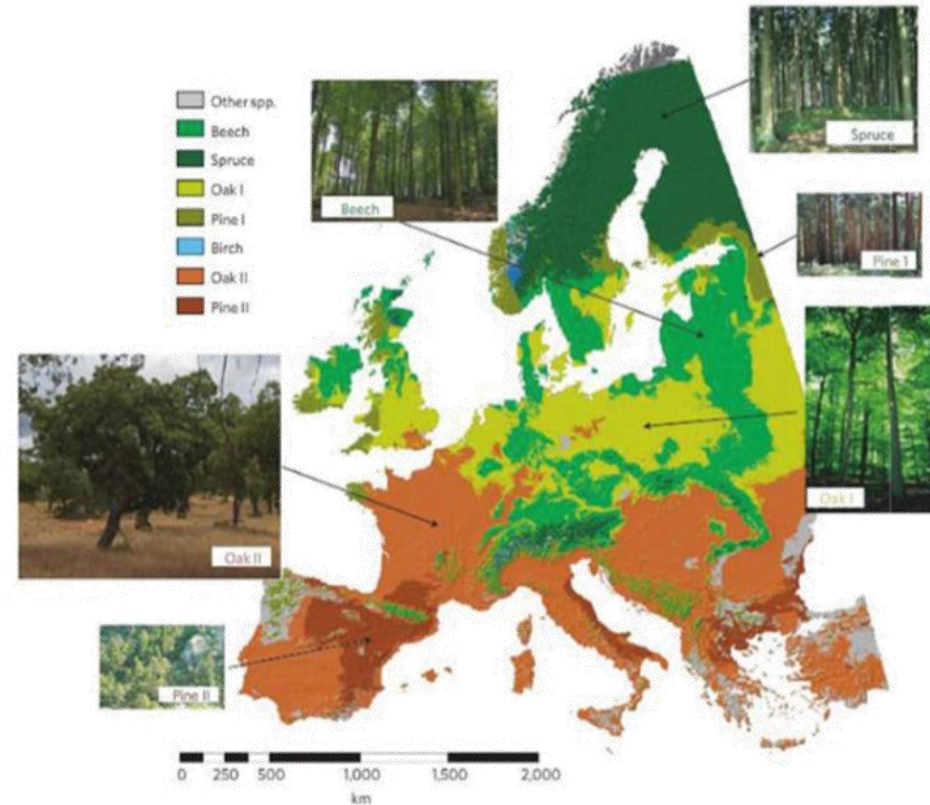
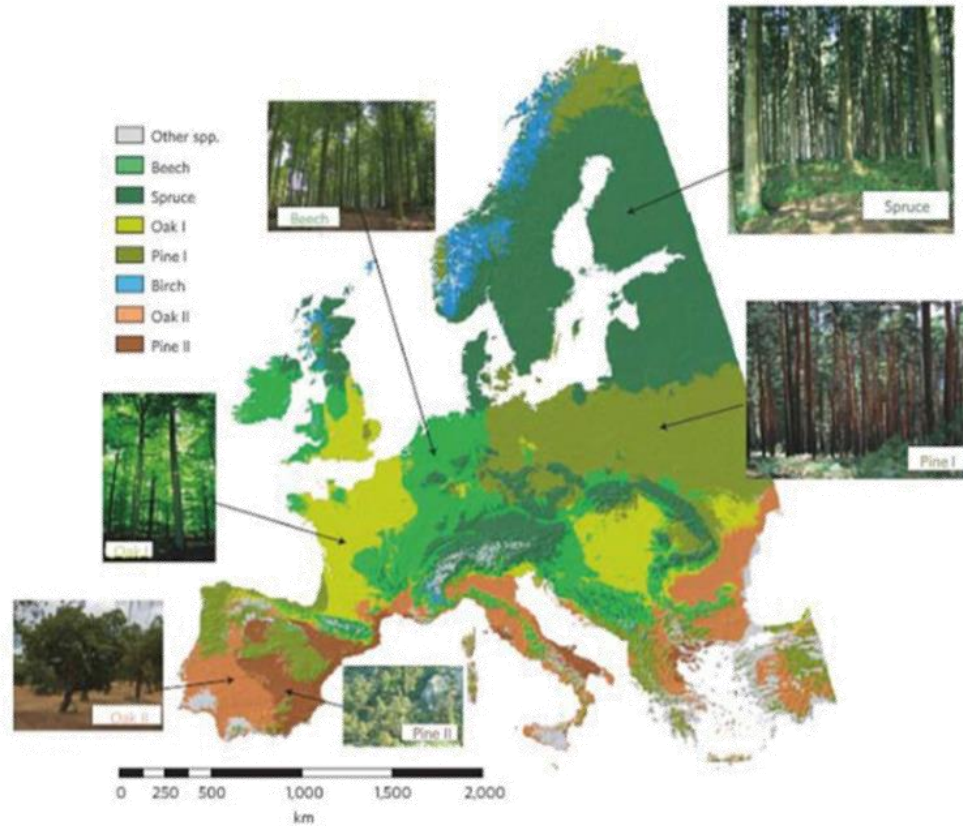
Forests for biomass or biodiversity

7-06-2021 / ESP Tartu / Deconchat Marc

[le-feu-dans-les-forets](https://www.inrae.fr/en/actualites/actualites/2021/06/07/le-feu-dans-les-forets)



# ➤ New geographical range for tree species: the risk of inaction



INRAE

Forests for biomass or biodiversity  
7-06-2021 / ESP Tartu / Deconchat Marc



## ➤ Social dimensions: which forest for our children?



Strike of in the National office of forest management



INRAE

Forests for biomass or biodiversity

7-06-2021 / ESP Tartu / Deconchat Marc



## ➤ Disliked forests



- New scenarios need to be co-produced and perceived by all affected people

Thank you for your attention