

Supplementary information

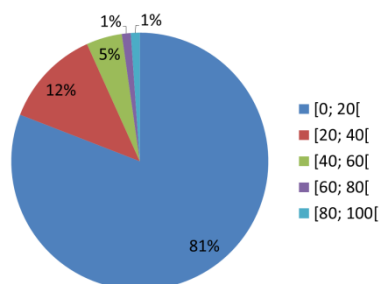


Figure S1: Distribution of rust spot volume in tubers grown in the greenhouse

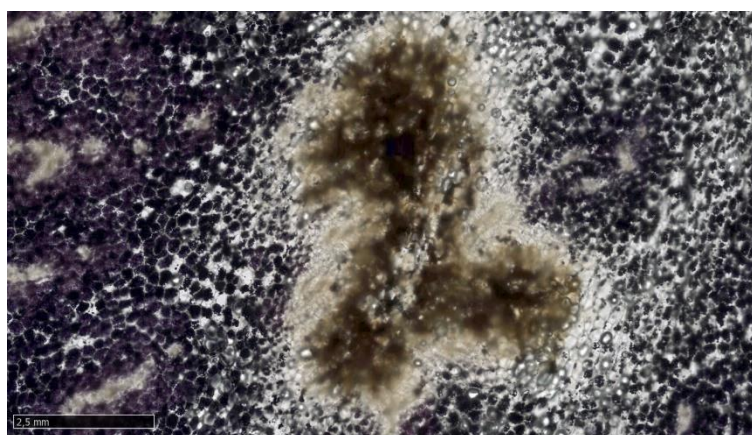


Figure S2: Microscopic image obtained using a HAMAMATSU slide scanner of a 400 μm -thick slice of potato tissue where a rust spot is seen in the perimedullary region of the tuber. The tissue was washed with water to remove all excess starch and then soaked in Lugol solution for a few seconds. Scale bar is 2.5 μm .

Table S1: Description of greenhouse-grown potato plants with internal rust spots

Condition	Plant	Size of tuber	Weight of tuber (g)	Volume of tuber (cm ³)	Number of rust spots	Volume of rust spots (mm ³)
Control	P1	1	65	62	6	69; 33; 24; 23; 16; 3
		2	47	46	3	96; 52; 33
	P2	3	32	31	7	46; 16; 15; 10; 9; 8; 3
	P3	4	35	33	3	43; 24; 18
VWD	P1	1	54	51	10	33; 29; 21; 18; 10; 9; 9; 7; 7; 5
		3	19	18	5	7; 2; 2; 2; 1
	P2	1	49	46	12	18; 14; 13; 12; 7; 7; 6; 5; 4; 3; 3
	P3	1	56	54	16	43; 21; 19; 17; 13; 11; 11; 9; 8; 7; 6; 3; 2; 1; 1; 1
		2	53	50	9	29; 24; 11; 7; 5; 5; 5; 5; 4
	P4	2	29	28	1	6
	P5	1	30	28	3	3; 3; 3; 2
		2	27	25	6	5; 5; 4; 3; 3; 2
	P6	2	33	31	7	3; 3; 2; 2; 2; 2; 1

