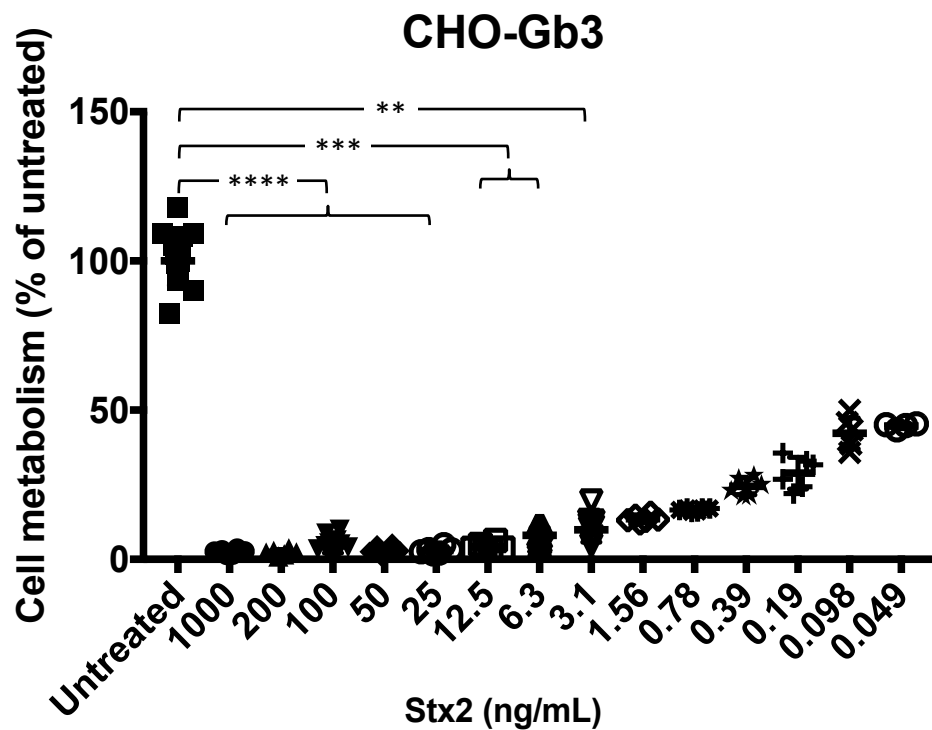
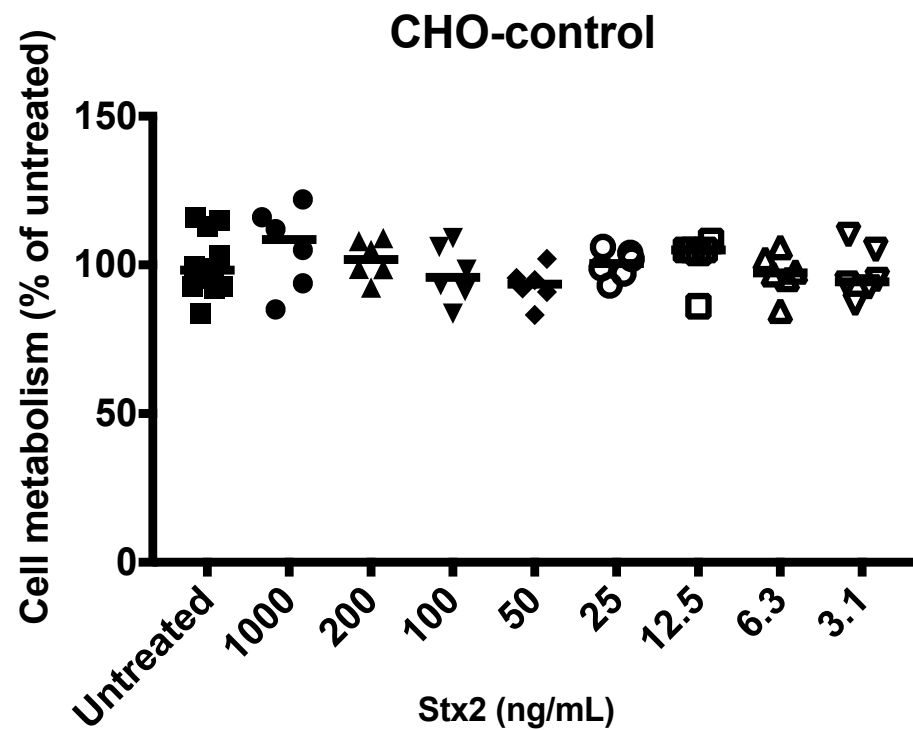


**A****B**

### Supplementary Figure S3: CHO cells become sensitive to Stx2 upon A4GALT transfection

CHO-Gb3 and CHO-control cells were incubated with Shiga toxin (Stx2) and cell metabolism was measured. **(A)** A significant difference was seen in CHO-Gb3 cells between untreated and Stx2-treated cells in the range of 25 – 1000 ng/mL ( $P < 0.0001$ ), between untreated and Stx2-treated at 6.3 and 12.5 ( $P < 0.001$ ) and between untreated and Stx2-treated at 3.1 ng/mL ( $P < 0.01$ ) (2 independent experiments). **(B)** In CHO-control cells incubated with Stx2 no decrease in cell metabolism could be detected (one experiment). Median cell metabolism is denoted by the bar. \*\*:  $P < 0.01$ , \*\*\*:  $P < 0.001$ , \*\*\*\*:  $P < 0.0001$ , Kruskal-Wallis test.