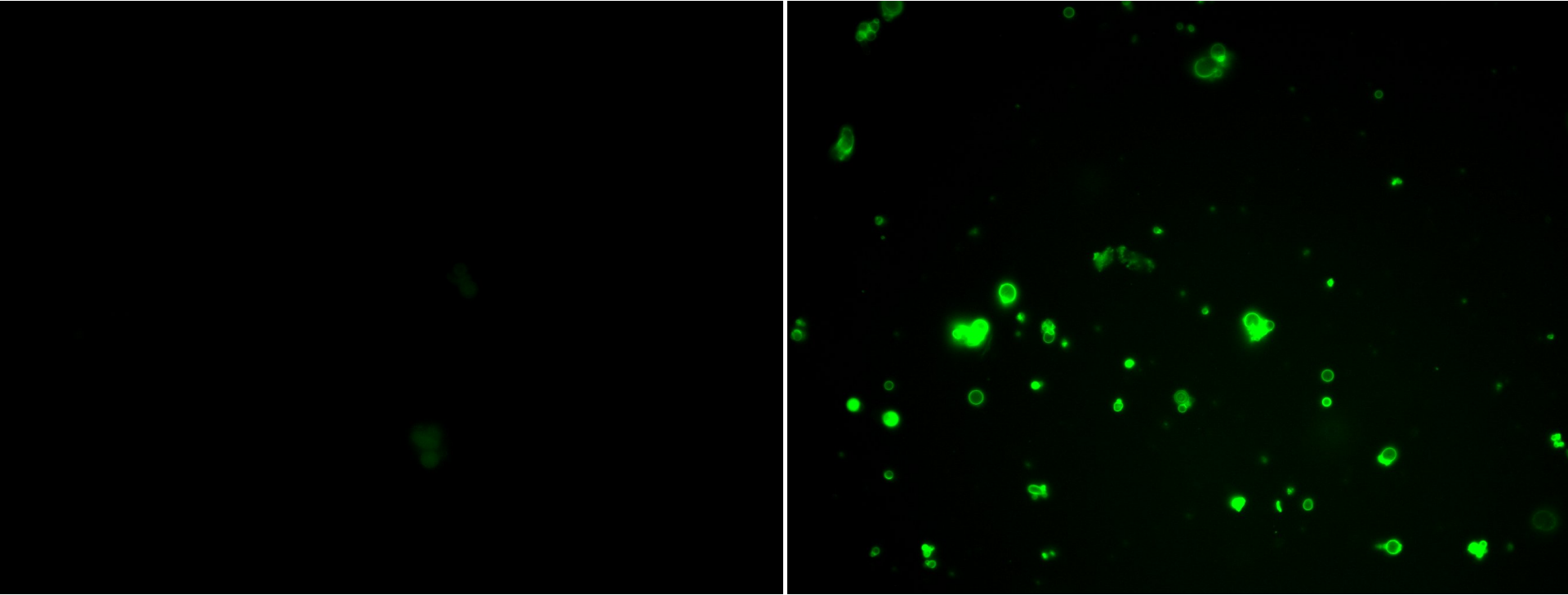


Before Stx2:Alexa488

After Stx2:Alexa488



Supplementary Figure S6: Stx2 binding of Gb3-liposome. Liposomes consisting of globotriaosylceramide, phosphatidylserine and phosphatidylethanolamine in equal portions before (left) and after (right) administration of Stx2:Alexa488. Visualized by an Axio Observer.A1 fluorescence microscope.