



**HAL**  
open science

## Effect of a low water concentration in chloride, sodium and potassium on oocyte maturation, oocyte hydration, ovulation and egg quality in rainbow trout

Emilien Segret, Emilie Cardona, Sandrine Skiba-Cassy, Frédéric Cachelou,  
Julien Bobe

### ► To cite this version:

Emilien Segret, Emilie Cardona, Sandrine Skiba-Cassy, Frédéric Cachelou, Julien Bobe. Effect of a low water concentration in chloride, sodium and potassium on oocyte maturation, oocyte hydration, ovulation and egg quality in rainbow trout. *Aquaculture*, 2022, 546, pp.737374. 10.1016/j.aquaculture.2021.737374 . hal-03326018

HAL Id: hal-03326018

<https://hal.inrae.fr/hal-03326018v1>

Submitted on 7 Sep 2021

**HAL** is a multi-disciplinary open access archive for the deposit and dissemination of scientific research documents, whether they are published or not. The documents may come from teaching and research institutions in France or abroad, or from public or private research centers.

L'archive ouverte pluridisciplinaire **HAL**, est destinée au dépôt et à la diffusion de documents scientifiques de niveau recherche, publiés ou non, émanant des établissements d'enseignement et de recherche français ou étrangers, des laboratoires publics ou privés.



Distributed under a Creative Commons Attribution - NonCommercial - NoDerivatives 4.0  
International License

1 **Effect of a low water concentration in chloride, sodium and**  
2 **potassium on oocyte maturation, oocyte hydration, ovulation**  
3 **and egg quality in rainbow trout.**

4  
5 Emilien Segret<sup>1,2\*</sup>, Emilie Cardona<sup>1,3</sup>, Sandrine Skiba-Cassy<sup>3</sup>, Frédéric Cachelou<sup>2</sup>, Julien Bobe<sup>1\*</sup>.

6 <sup>1</sup>INRAE, LPGP, Fish Physiology and Genomics, F-35000 Rennes, France.

7 <sup>2</sup>Viviers de Sarrance, 64490 Sarrance, France.

8 <sup>3</sup>INRAE, Univ. Pau & Pays Adour, E2S UPPA, NUMEA, 64310, Saint-Pée-sur-Nivelle, France.

9 \*corresponding authors: Emilien Segret : [emilien.segret@inrae.fr](mailto:emilien.segret@inrae.fr) / [+336333782979](tel:+336333782979)

10 Julien Bobe : [julien.bobe@inrae.fr](mailto:julien.bobe@inrae.fr)

11 **Key words:** ultrasound staging; non-invasive phenotyping; egg viability; VisEgg; ion and water  
12 transport.

13 **Highlights:**

- 14 - **Low water salinity impairs final oocyte maturation and egg quality in rainbow trout**  
15 - **Low water salinity induces delayed ovulation and impaired oocyte hydration**  
16 - **Low water salinity induces a dysregulation of several key ovulatory genes**  
17 - **Monitoring of final oocyte maturation can be performed using ultrasound staging**

18

19

## 20 **Abstract**

21 Water salinity is an important environmental factor known to have detrimental effects on salmonid  
22 reproduction, mostly when migrating female broodfish are held in sea water. In contrast, data  
23 obtained in freshwater are scarce and the impact of low water salinity, and more specifically of low  
24 water concentrations in sodium, chloride and potassium, during reproduction in freshwater is  
25 currently unknown. For this reason, and because ion and water fluxes are critical for the final steps of  
26 the female gamete formation, including oocyte hydration and ovulation, the aim of the present study  
27 was to investigate the impact of low salinity water on final oocyte maturation, ovulation and,  
28 ultimately, on egg quality, using rainbow trout as a physiological model and relevant aquaculture  
29 species.

30 Fish from the same commercial strain were raised either in a site characterized by low concentrations  
31 of Na<sup>+</sup>, K<sup>+</sup>, and Cl<sup>-</sup> ions in the water or in a closely located control site exhibiting higher concentration  
32 in these elements. Egg quality and duration of final oocyte maturation were investigated using  
33 innovative phenotyping tools such as automatic assessment of egg viability using the VisEgg system  
34 and non-invasive echograph-based monitoring of final oocyte maturation duration, respectively.  
35 Oocyte hydration during final oocyte maturation and after ovulation was also investigated. Finally,  
36 molecular phenotyping was performed using real-time PCR-based monitoring of several key players of  
37 final oocyte maturation and ovulation associated with ion and water transport, inflammation,  
38 proteolytic activity, and coagulation. Oocyte hydration and gene expression data were analyzed in the  
39 light of the duration of final oocyte maturation.

40 Here we show that low water salinity (i.e., low water concentration in chloride, sodium and potassium)  
41 negatively influences final oocyte maturation, ovulation and, ultimately, egg quality. Low water salinity  
42 triggered delayed ovulation and lower oocyte viability. When investigating the impact of low water  
43 salinity on final oocyte maturation duration, individuals presenting the most severe phenotypes

44 exhibited impaired oocyte hydration and abnormally reduced gene expression levels of several key  
45 players of the ovulatory process. While the under expression of water (i.e., aquaporins) and ion (i.e.,  
46 solute carriers) transporters is consistent with impaired oocyte hydration, our observations also  
47 indicate that the overall ovulatory gene expression program is disrupted. Our results raise the question  
48 of the mechanisms underlying the negative influence of low salinity water on the dynamics of the  
49 preovulatory phase, on the control of the oocyte homeostasis, including hydration, and on the overall  
50 success of the maturation-ovulation process.

51

## 52 **1 Introduction**

53 Fish egg quality is defined as the egg ability to be fertilized and to subsequently develop into a normal  
54 embryo (Bobe and Labbé, 2010). Egg quality can be highly variable in fish under both natural and  
55 aquaculture conditions. In most species, a lack of knowledge of mechanisms influencing egg quality is  
56 a limiting factor for the mass production of fry (Migaud et al. 2013). Many external factors such as  
57 broodstock nutrition, temperature and photoperiod, to name just a few, are known to have a major  
58 impact on egg quality in various fish species (Aegerter and Jalabert, 2004; Bonnet et al., 2007; Carrillo  
59 et al., 1989; Izquierdo et al., 2001; Pankhurst et al., 1996). In contrast, other factors such as  
60 composition and physico-chemical parameters of the water have received far less attention (Brooks et  
61 al., 1997; Bobe and Labbe, 2010). Ionic composition of the water is however likely to influence the final  
62 steps of oogenesis (i.e., final oocyte maturation - FOM) given the importance of water exchange during  
63 this critical period (Dolomatov, 2012). Among mineral elements, chloride, sodium and potassium are  
64 of specific interest because (i) they are the most abundant electrolytes in the body of living organisms  
65 and (ii) they serve a vital function in controlling osmotic pressure and acid-base equilibrium (Lall, 2003).  
66 It is commonly accepted that deficiencies in chloride, sodium and potassium are difficult to trigger  
67 because fish derive these mineral elements from surrounding water (Lall, 2003). To our knowledge,  
68 the impact of a low ionic composition in these three key mineral elements on female reproduction was  
69 never investigated.

70 Several concomitant, yet distinct, events take place in the full-grown ovarian follicle during FOM. The  
71 follicle-enclosed oocyte progressively acquires the ability to resume meiosis whereas the follicle is  
72 preparing the release of oocyte from surrounding somatic layers at ovulation (Grier et al., 2007;  
73 Lubzens et al., 2010). In fish, as in other vertebrates, the mechanisms involved in the ovulatory process  
74 are described as inflammatory-like (Espey, 1994; Thibault and Levasseur, 1988). In contrast to meiosis  
75 resumption and ovulation that are common to all vertebrates, FOM in fish is associated with a  
76 significant hydration of the oocyte. This phenomenon results in a dramatic increase of oocyte volume  
77 in marine species and is triggered by water entry due to the increase in free amino acid content

78 resulting from yolk protein processing (Finn et al., 2002). In the saltmarsh species, *Fundulus*  
79 *heteroclitus*, the influx in potassium and sodium is a major cause of the uptake of osmotically obligated  
80 water and subsequent volume increase experienced by maturing oocytes (Wallace et al., 1992). In  
81 fresh water species, a more limited, yet significant, increase in water content is observed during FOM  
82 that could contribute mechanically to the ovulatory process, ultimately leading to oocyte release from  
83 surrounding somatic follicular layers (Craik and Harvey, 1984; Milla et al., 2006).

84 Rainbow trout (*Oncorhynchus mykiss*) is a major aquaculture species that produces eggs every year  
85 starting at age 2 (Bromage et al., 1992). In this species oocyte maturation, ovulation (Cerdà et al., 2007;  
86 Grier et al., 2007; Jalabert and Fostier, 1984 ; Lubzens et al., 2010), and egg quality (Bobe, 2015; Bobe  
87 and Labbé, 2010; Bromage and Jones, 1992; Brooks et al., 1997) have been extensively studied,  
88 including at the molecular level (Bobe et al., 2004, 2006, 2009; Yamashita et al., 2000). As previously  
89 documented, exposition to stress factors (e.g., temperature) during FOM can alter the quality of  
90 unfertilized eggs released from the ovary at ovulation (Aegerter and Jalabert, 2004; Bobe and Labbé,  
91 2010; Colson et al., 2019).

92 For these reasons, and because water and ion fluxes are important for several key steps of oocyte  
93 development during FOM, the aim of the present study was to investigate the impact of water ionic  
94 composition, and more specifically low concentrations of sodium, chloride and potassium on FOM,  
95 ovulation and, ultimately, on egg quality, using rainbow trout as a physiological model and relevant  
96 aquaculture species. To achieve this objective, we used two closely located production sites in the  
97 French Pyrenees where the stream water exhibits dramatically different concentrations of chloride,  
98 sodium and potassium all year round, including during the reproductive period.

## 99 **2 Material and methods**

### 100 2.1 Ethical statement

101 Investigations were conducted in compliance with EU Directive 2010/63/EU for animal experiments.  
102 The experimental protocol registered under the reference #201904021747602 was specifically

103 approved by INRAE-LPGP Animal Care and Use Committee. For oocyte sampling, echograph-based  
104 monitoring and ovulation detection, fish were anaesthetized in tricaine metanesulfonate (MS222) at a  
105 concentration of 130 mg/liter. For gonad sampling, fish were euthanized in MS222 at a concentration  
106 of 300mg/liter, until 10 minutes after cessation of opercular movement.

## 107 2.2 Experimental sites and water characterization

108 Two experimental sites located in Rébénacq [43.155948,-0.405067] and Sarrance [43.049999,-  
109 0.6014075] (French Pyrenees), and presenting similar water temperature [9°-10°C] and oxygen  
110 conditions were used in the present study. The two sites are close (<20 km) but located in different  
111 valleys (i.e., hydrogeologic systems) differing mostly by ionic abundance in Sodium (Na<sup>+</sup>), Chloride (Cl<sup>-</sup>)  
112 ) and Potassium (K<sup>+</sup>) in the water (Fig 1.A , Supplemental datafiles 1 and 2). The site presenting  
113 significantly lower abundance of these 3 mineral elements will be referred to hereafter as “Low Salinity  
114 Water (LSW)”, whereas the other site, for which water ionic composition was significantly higher, will  
115 be referred to as “Control”.

116 For both sites, water composition analyses were performed monthly throughout the year, from the  
117 water flowing into the experimental raceways using a dedicated water sampling flask to avoid any  
118 contamination. Samples were analyzed by a specialized analytical laboratory (Ultra Traces Analyses  
119 Aquitaine, Pau, France) that provided the sampling flasks. Ionic abundance analysis was performed  
120 using inductively coupled plasma atomic emission spectroscopy (ICP-AES) technique for Na<sup>+</sup> and K<sup>+</sup>  
121 and by ionic chromatography for Cl<sup>-</sup>. Data obtained were not normally-distributed (Shapiro-Wilk test,  
122  $p > 0.005$ ). Ionic concentration in the 2 sites was compared using non parametric U-tests. A  
123 comprehensive water analysis of both sites is available in supplemental data files 1 and 2.

## 124 2.3 Fish rearing

125 Three years old female rainbow trout (*Oncorhynchus mykiss*) from the same commercial strain (Viviers  
126 SA Company strain, France) were used in this study. After rearing in a nursery site, fish were transferred  
127 to either Rébénacq (control site) or Sarrance (LSW site) locations at 6 months post-fertilization. On

128 both sites, fish were reared under natural photoperiod in 125m<sup>3</sup> raceways at a 60kg.m<sup>-3</sup> density, with  
129 a water renewal of 75% per hour until the beginning of the experiment. Stream water was used in an  
130 open circulation system without any recirculation. Similar feeding protocols, including feeding rate and  
131 diet composition, were applied for both sites throughout their lifecycle. Fish were fed at an identical  
132 daily rate (0.6% of the live weight) with the same commercial diet (46% crude protein, 19% crude fat,  
133 0.9% phosphorus, 11.5% ash, 19 MJ/kg gross energy, Omega-3 4.8%, Omega-6 1.25%) (Le Gouessant,  
134 Lamballe, France). Following a first reproduction at age 2, fish were held under natural photoperiod  
135 during their second reproductive cycle. Spawning naturally occurred during November-December.

## 136 2.4 Experimental design

137 Approximately two weeks before expected ovulation (estimated based on previous ovulation dates),  
138 fish were transferred into a 8 m<sup>3</sup> raceway to facilitate manipulations. Experimental raceways on both  
139 sites were of similar dimensions (8 m in length, 1 m in width and 1 m in depth) with a water renewal  
140 of 200% per hour originating directly from the stream water. Ovulation was monitored three time a  
141 week. Feeding was stopped when first ovulations were detected. On the control site, a total of 32 fish  
142 were used including 18 for egg quality assessment using the VisEgg system (Cardona et al. 2020) (4 of  
143 them being also used for the oocyte hydration study and 11 of them being also used for blood  
144 sampling) and 14 for the molecular analysis. On the LSW site, a total of 46 fish were used including 30  
145 for egg quality assessment using the VisEgg system (4 of them being also used for the oocyte hydration  
146 study and 9 of them being also used for blood sampling) and 16 for the molecular analysis.

## 147 2.5 Egg quality assessment using VisEgg

148 In both groups, specific fish (control, n=18; LSW, n=30) were individually monitored until ovulation.  
149 Ovulations were checked every 2-3 days, under anesthesia, by gentle pressure on the abdomen.  
150 Oocyte viability evaluation was systematically performed using the VisEgg protocol when ovulation  
151 occurred. This recently developed tool allows a robust assessment of different egg features including  
152 egg viability (Cardona et al., 2020). The process uses a standardized image-based batch analysis



153 method of 24h-hydrated unfertilized eggs and an image processing algorithm. Outputs are the  
154 presence and percentage of whitening (i.e., non-viable) eggs within the batch. These features can be  
155 used to reliably assess egg integrity and viability. Analyze of presence of white eggs depending on  
156 rearing sites or the maturation duration yielded contingency tables analyzed using Khi-2 tests. Data  
157 obtained from VisEgg were not normally distributed (Shapiro-Wilk test,  $p < 0.001$ ). Comparison of two  
158 groups were performed using non parametric U-tests.

## 159 2.6 Oocyte development staging during FOM

160 A non-invasive to the female ultrasound-based staging was used to estimate progress into FOM. This  
161 approach, previously described for assessing reproductive stages in wild salmon (Nevoux et al., 2019),  
162 was used here for the first time to assess progression into FOM in rainbow trout. An ultrasound scanner  
163 M-Turbo (Sonosite) with a 5-10MHz linear transducer (multiple frequency) was used. Anesthetized fish  
164 were placed in a plastic tray for a short duration (<30 sec) and sagittal images of the abdominal cavity  
165 were obtained by aligning the transducer with the lateral line of the fish. Late vitellogenic oocytes  
166 appeared white on the screen, while a dark area progressively appeared at the center of the oocyte as  
167 the oocytes progressed into FOM (Fig 3.A).

168 In order to validate echograph-based staging, direct brightfield observation was performed. In rainbow  
169 trout, late-vitellogenic (LV) oocytes observed with the naked eye appear opaque and no noticeable  
170 changes in yolk structure or any sign of meiosis resumption can be observed. Post-vitellogenesis (PV)  
171 oocytes exhibit a central yolk clarification as meiosis progressively resumes. Germinal vesicle is still  
172 visible and lipid droplets remain relatively small. During oocyte maturation (Mat), germinal vesicle  
173 breakdown (GVBD) progressively occurs and oocytes become totally clear with well-defined lipid  
174 droplets (Grier et al., 2007; Jalabert and Fostier, 1984; Milla et al., 2006; Patiño and Sullivan, 2002;  
175 Hurk and Peute, 1979; Wallace and Selman, 1990). The above description of phenotypic changes  
176 occurring in the rainbow trout oocyte during FOM was used to validate the echograph-based staging.  
177 In 100% of the cases (n= 57 fish) the direct observation confirmed the echograph-based staging of the

178 oocyte during FOM. Echograph-based oocyte staging was preferred due to its non-invasiveness nature  
179 and was thus subsequently used to measure the duration of the oocyte maturation phase (i.e.,  
180 between fully transparent oocyte (Mat) stage and detected ovulation) in the present study. The  
181 duration of the maturation phase was temperature-normalized using the actual temperature recorded  
182 on both sites during experiments and expressed in hours at 10°C in both experimental groups.  
183 Comparisons of the two groups were performed using non-parametric U-tests.

## 184 2.7 Plasma sampling and analysis

185 Blood was sampled during oocyte maturation on both sites (control, n=9; LSW, n=11). Blood samples  
186 were centrifuged (1000 g, 10 min, 4°C), and plasma were sampled and stored at -20 °C until further  
187 analysis. Plasma samples were analyzed by a specialized analytical laboratory (Ultra Traces Analyses  
188 Aquitaine, Pau, France). Ionic abundance analysis was performed using inductively coupled plasma  
189 atomic emission spectroscopy (ICP-AES) technique for Na<sup>+</sup> and K<sup>+</sup> and by ionic chromatography for Cl<sup>-</sup>  
190 . Comparison of two groups were performed using non parametric U-tests.

## 191 2.8 Hydration measurement

192 For analytical purposes, individual fish originating from the LSW site were separated in two groups,  
193 based on the duration of the maturation phase [Mat<64H at 10°C (n=10), Mat≥64H at 10°C (n=21)].  
194 Oocyte hydration was measured (n=4 individuals of each group) and monitored from late vitellogenesis  
195 stage until ovulation. The method used has previously been described (Milla et al., 2006). Briefly,  
196 gentle manual striping was performed under anesthesia to collect oocytes, from late vitellogenesis  
197 stage until ovulation. As previously described (Finet et al., 1988), non-ovulated oocytes were expelled  
198 from the follicle layers using two fine tip tweezers. Oocyte development staging was performed under  
199 a binocular microscope. A total of 60 to 80 oocytes per female were obtained and rapidly weighted to  
200 obtain wet mass (WM). After heating these oocytes 24 h at 105°C in a drying oven (Memmert,  
201 Buechenbach, Germany), dry mass (DM) was measured. The water content (WC) was measured from  
202 subtracting DM from WM. For each individual, WC was measured (n=4 individuals of each group) and

203 monitored from late vitellogenesis stage until ovulation. Analysis of the increase in water content (WC)  
204 in the two experimental groups (Mat <64H ; Mat  $\geq$  64H) was performed using non parametric U-test.

## 205 2.9 Molecular analysis

### 206 2.9.1 Tissue collection

207 Ovaries from control (n=4 late-vitellogenesis stage and n=10 oocyte maturation stage) and LSW (n=5  
208 late-vitellogenesis stage and n=11 oocyte maturation stage) groups were sampled for RNA extraction.  
209 After euthanasia, ovaries were dissected out of the abdominal cavity. Oocyte staging was performed  
210 using ultrasound images prior to euthanasia followed by macroscopic validation of oocyte stage under  
211 microscope after dissection. Ovarian follicles were devolged as previously described (Bobe and Goetz,  
212 2000) by pressing the entire tissue between two stainless steel screens while continuously applying  
213 ice-cold Cortland medium with a squirt bottle, then immediately frozen in liquid Nitrogen and stored  
214 at -80°C until RNA extraction.

### 215 2.9.2 Total RNA extraction and reverse transcription

216 Ovarian tissue was homogenized in Trizol reagent (Molecular Research Center, Cincinnati, USA) at a  
217 ratio of 1ml per 100mg of tissue. Tissue was grinded using bead beating technology (Precellys  
218 Evolution, Bertin Technologies, Saint-Quentin en Yvelines, France). Total RNA extraction was  
219 performed following the manufacturer's instructions. Briefly, 2  $\mu$ g of total RNA were reverse  
220 transcribed using Maxima First Strand cDNA Synthesis Kit (Maxima Reverse Transcriptase enzyme,  
221 derived from Moloney murine Leukemia virus enzyme). Reverse transcription was performed by 10  
222 minutes of incubation at 25°C followed by a 15 minutes step at 60°C and a 5-minute step at 75°C.  
223 Control reactions were run without Maxima reverse transcriptase and used as negative controls in the  
224 real-time polymerase chain reaction study.

### 225 2.9.3 Real-time PCR analysis

226 Real-time PCR was performed using a LightCycler480 (Roche, Switzerland). Reverse transcription  
227 products were diluted to 1/30. Technical replicates of each biological sample were run. Runs were

228 performed in 5µL reactions containing 2µL of RT product, 250 nM of each primer and 1X PowerUp  
229 SYBR Green Master Mix (Applied Biosystems). The program used was: 50°C for 2 minutes, then 95°C  
230 for 2 minutes for initial denaturation, 40 cycles of 95°C for 3 seconds and 60°C for 30 seconds. After  
231 amplification, a fusion curve was obtained by 15-second step followed by a 0.5°C increase, repeated  
232 70 times, and starting at 60°C

#### 233 2.9.4 Gene expression analysis

234 Several concomitant events occur in the ovary during FOM that involve distinct biological processes  
235 including ovulation, an inflammatory-like process characterized by major tissue rearrangements, blood  
236 coagulation, detachment of somatic follicular cells from the oocyte, and oocyte hydration which  
237 involves specific water and ion transports. Genes used for the molecular analysis were thus selected  
238 for their putative role in inflammation, proteolytic activity, or water and ion transport and were  
239 previously reported to be markedly differentially up-regulated during FOM in rainbow trout (Bobe et  
240 al., 2006). Primers used in this prior study (Bobe et al., 2006) were used here to specifically monitor  
241 the expression of the following genes. *aquaporin 4 (aqp4*, GenBank accession # BX885214), *vasotocin-*  
242 *neurophysin VT 1 (vt1*, GenBank accession # CA375992) and *solute carrier family 26 (slc26a4*, GenBank  
243 accession # BX873066) are involved in ion and water transport processes whereas *A Disintegrin And*  
244 *Metalloproteinases 22 (adam22*, GenBank accession # CA363158), *CXC chemokine L14 (cxcl14*,  
245 GenBank accession # BX868653) and *coagulation factor V (f5*, GenBank accession # BX879767) are  
246 inflammation-related genes. 18S RNA level was measured in each sample and used for messenger RNA  
247 abundance normalization. Expression levels at the late-vitellogenic (LV) stage are not presented but  
248 were not significantly different between groups and were arbitrarily set to 1 for each group. Expression  
249 data at the oocyte maturation stage were expressed as a percentage of the transcript abundance at  
250 the LV stage. Difference between LSW and control groups at oocyte maturation stage were analyzed  
251 using non-parametric U-tests.

252

## 253 **3 Results and discussion**

### 254 3.1 Low water salinity results in lower egg viability

255 The automatic phenotyping of egg viability using the VisEgg system (Fig 2.A) revealed that 60% of the  
256 females exhibited non-viable eggs at the time of ovulation in the LSW group in sharp contrast with the  
257 control group in which only 18% of the females exhibited at least one non-viable egg at ovulation.  
258 More specifically, the percentage of non-viable eggs was dramatically increased (+378%) in the LSW  
259 group in comparison to the control group (Fig 2.B). Salinity is known to have an impact on reproduction  
260 in fish, including in salmonids. In Atlantic salmon (*Salmo salar*) and Coho salmon (*Oncorhynchus*  
261 *kisutch*), whole-life breeding in freshwater can result in the production of poor quality gametes  
262 including poor semen production for males and presence of atretic follicles in females (Valdebenito et  
263 al., 2015). Similarly, other studies reported that rearing of Atlantic salmon in sea water induces delays  
264 and variability in the timing of ovulation (Haffray, 1995) and poor gamete quality (Maisse et al., 1998).  
265 In Arctic charr (*Salvelinus alpinus*), gamete quality is improved for broodstock transferred in saltwater  
266 during their gametogenesis (Atse et al., 2002). Together, these studies indicate that water salinity is a  
267 key factor for the reproduction success of salmonids that all reproduce in freshwater even though a  
268 part of their life cycle occurs in sea water in some species. Most studies have however focused on the  
269 impact of high water salinity during final oocyte maturation. In contrast, data on low salinity water  
270 remain scarce. In addition, most studies have focused on migrating species that return to freshwater  
271 to reproduce. In the present study, we confirm that water salinity is a key factor of reproductive  
272 success and show that, similarly to high salinity, low salinity can also have a detrimental effect on  
273 reproductive success.

### 274 3.2 Low water salinity triggers delayed ovulation

275 Together, our results indicate that low water concentration in chloride, sodium and potassium triggers  
276 a significant decrease in egg viability at ovulation. In order to shed light on underlying mechanisms, we  
277 aimed at investigating the preovulatory period that is known to be critical for egg quality. Given the

278 favorable temperature range (i.e., 9-10°C) and similar feeding regime throughout the reproductive  
279 cycle, we reasoned that LSW could perturbate FOM and investigated the duration of the maturation  
280 phase from meiosis resumption to ovulation. Using non-invasive echograph-based analysis we could  
281 measure the duration of the oocyte maturation phase. After monitoring the first signs of intra-oocyte  
282 clearing (i.e., post-vitellogenic stage) (Fig 3.A and B), oocytes became fully transparent (i.e., maturation  
283 stage) until they were released from the ovary at ovulation. The duration of the maturation phase was  
284 calculated in each group after normalization by the daily temperature on site. We observed (Fig 3.C)  
285 that the maturation phase was significantly longer in the LSW group in comparison to the control  
286 group. The duration of oocyte maturation was on average 53 hours (at 10°C) in the LSW group while it  
287 was 70 hours (at 10°C) in the control group, which corresponds to a 32% increase in FOM duration in  
288 the LSW group.

289 Several studies described the temporal aspects of final oocyte maturation in rainbow trout. The *in vivo*  
290 duration of FOM, including progressive central clearing of the oocyte, ranged from 48 to 72 hours at  
291 13°C (Bry, 1981). The detachment of the mature oocyte from surrounding somatic follicular layers was  
292 reported to occur between 72 and 96 hours after the first observable signs of oocyte maturation (i.e.,  
293 central clarification) at 10°C (Jalabert, 1978; Jalabert and Szöllösi, 1975). Other authors showed that  
294 ovulation occurs generally 48-96 hours at 14°C after the peak concentration of maturation-inducing  
295 steroid (Fostier, 1981). Another study shown a duration of 48-72 hours at 12°C between maturation  
296 and detected ovulation for rainbow trout (Breton et al., 1998).

297 The duration of oocyte maturation, from full oocyte cytoplasm clearing to ovulation, reported here for  
298 the control group, is therefore fully consistent with the duration of FOM reported in these prior studies  
299 that usually included the post-vitellogenic phase (i.e., germinal vesicle migration towards the periphery  
300 of the oocyte). Our observations however suggest that the duration of FOM in the LSW group is higher  
301 or in the upper range of what is classically observed in rainbow trout at 10°C. In addition, the LSW  
302 group exhibits a strong interindividual variability with individuals that ovulated 97 hours (2 individuals)  
303 and 130 hours (1 individual) after detected oocyte maturation (Fig 3.C). These individuals presented

304 the usual phenotypic traits of maturation (i.e., color pattern and body shape), but ovulation occurred  
305 drastically later. Heterogeneity in FOM duration and, in some cases, absence of ovulation has often  
306 been reported in trout and other fish. This heterogeneity has however systematically always been  
307 associated with premature induction of FOM and ovulation, typically when FOM was triggered in  
308 maturationally incompetent (i.e., vitellogenic) follicles *in vivo* or *in vitro*. This is for instance the case  
309 for hormonally injected fish (Bry, 1981; Goetz and Bergman, 1978; Jalabert, 1978). Using non-invasive  
310 ultrasound-based FOM monitoring, we were able to demonstrate here that oocyte maturation (i.e.,  
311 oocyte clearing) occurred but that ovulation was delayed. Previous studies have demonstrated that  
312 oocyte maturation and ovulation, while being interconnected, were two independent processes. In  
313 rainbow trout it is possible to trigger ovulation without oocyte maturation (Jalabert, 1972). Together,  
314 our results show that low salinity (i.e., low water concentration in chloride, sodium and potassium)  
315 during FOM triggers delayed ovulation, sometimes by several days. Our observations also indicate that,  
316 while oocyte maturation occurs normally, the ovulatory process appears impaired or inhibited,  
317 ultimately leading to abnormally long FOM.

### 318 3.3 Reduced egg viability in low salinity water is linked with delayed ovulation

319 Together our results show that low water concentration in chloride, sodium and potassium triggered  
320 reduced egg viability and delayed ovulation. We also noticed a high inter-individual variability in both  
321 egg viability and maturation phase duration in the LSW group (Figs 2.B & 3.C). We reasoned that  
322 delayed ovulation could be at the origin of lower egg viability in the LSW group and investigated further  
323 any link between egg viability and maturation phase duration. For data analysis, LSW fish were  
324 separated in two groups, based on the duration of the maturation phase. We observed a dramatic and  
325 highly significant difference in egg viability in the LSW group depending on the duration of the  
326 maturation phase (Fig 4). A very high proportion (85%) of the fish exhibiting a maturation phase  
327 duration of 64 hours or more exhibited non-viable eggs at ovulation, while only 10% of the fish that  
328 underwent oocyte maturation in less than 64 hours exhibited this feature (Fig 4.A). In addition, the

329 percentage of non-viable eggs was dramatically increased in the  $\geq 64$ h group in comparison to the  
330  $< 64$ h group (Fig 4.B).

331 These results strongly support our hypothesis of a significant loss of egg quality after delayed ovulation.  
332 A possible explanation for the higher rate of non-viable eggs would be the ageing of the oocytes. This  
333 well-known phenomenon has been extensively described (Aegerter and Jalabert, 2004; Billard, 1981;  
334 Craik and Harvey, 1984; Escaffre, 1976; Lahnsteiner, 2000; Samarin et al., 2015, 2008; Springate et al.,  
335 1984) and is known to trigger major egg quality defects. All existing studies on oocyte ageing prior to  
336 fertilization were however conducted after post-ovulatory ageing. To our knowledge, oocyte ageing  
337 prior to ovulation (i.e., within the ovarian follicle) is reported here for the first time in a fish species. In  
338 salmonids, in contrast to other fish species, post-ovulatory ageing does not induce a rapid decrease of  
339 egg quality. In rainbow trout, ovulated eggs can be held in the body cavity for 5 days at 12°C without  
340 any significant decrease of their developmental success (Aegerter et al., 2005). It is therefore unlikely  
341 that the modest intra follicular post-meiotic ageing observed here in the LSW group, in which ovulation  
342 is delayed, on average, by 17 hours, is sufficient to trigger alone the drop of egg quality observed in  
343 LSW. The osmotic properties of the rainbow trout egg have been thoroughly investigated in rainbow  
344 trout (Gray, 1932) and another explanation for the increase in whitening egg occurrence could be a  
345 loss of the oocyte homeostasis in LSW ultimately leading to non-viable eggs. In brook trout, a  
346 diminution of ionic concentration (Cl<sup>-</sup>) in surrounding medium has as direct negative effect of  
347 membrane resistance (Marshall et al., 1985). Disruption of the oocyte homeostasis could therefore  
348 originate from a fragile oocyte vitelline membrane. In addition, the loss in oocyte homeostasis could  
349 originate from difficulties (i.e., high energetic cost) in maintaining the osmotic difference across oocyte  
350 membrane in a hypotonic external medium.

351 Together, our results show that the reduced egg viability observed in LSW is linked to delayed  
352 ovulation. This reduced egg viability can be due, at least in part, to intra-follicular oocyte ageing. We  
353 cannot, however, rule out the possibility that LSW also affects egg viability through other mechanisms  
354 that could disrupt the maintenance of oocyte homeostasis and ultimately decrease egg viability.



355 Further investigations are needed to unravel the mechanisms triggering decreased egg viability when  
356 FOM is occurring in LSW.

### 357 3.4 Low water concentration in chloride, sodium and potassium results in reduced 358 oocyte hydration during FOM

359 The release of the oocyte from surrounding follicular layers at the time of ovulation results from the  
360 ovulatory process that has originally been described in mammals as an inflammatory-like reaction. In  
361 fish, in which the oocyte is directly in contact with surrounding follicular layers, a prerequisite is the  
362 separation of the oocyte from surrounding granulosa layers (Jalabert, 1976; Lubzens et al., 2010). This  
363 phenomenon has been thoroughly described in rainbow trout in which suppression of tight junctions  
364 between granulosa cells and the oocyte results in the apparition of a thin periplasmic space separating  
365 the oocyte from surrounding somatic layers (Lubzens et al., 2010). Many observations, including direct  
366 brightfield *in vitro* follicle observation, have shown that preovulatory rainbow trout oocyte exhibits a  
367 significant mechanical pression onto surrounding somatic layers (Lubzens et al., 2010). Somatic  
368 follicular layers appear to be stretched around the oocyte at that stage. Because of the angiotensin-  
369 like nature of the ovulatory process and the contractile actions of theca layers during ovulation (Hajnik  
370 and Goetz, 1998; Hsu et al., 1992), postovulatory follicles appear shrunked after ovulation. It was  
371 hypothesized that the modest (i.e., 20%), yet significant, increase in water content observed during  
372 rainbow trout FOM would contribute to the increasing pressure applied by the oocyte onto  
373 surrounding somatic layers and would ultimately mechanically facilitate the exit of the oocyte through  
374 a hole in somatic layers (Milla et al., 2006). Mechanic pressure applied by the oocyte swelling is one  
375 cause of follicle rupture and the completeness of hydration facilitates the complete liberation of  
376 unfertilized eggs into the abdominal cavity. We reasoned that a lower hydration would decrease the  
377 efficiency of ovulation and investigated hydration in the two above defined sub-groups exhibiting  
378 respectively <64h and ≥64h maturation phase duration. Oocyte water content (WC) was monitored  
379 throughout FOM in both groups. In the <64h group, WC progressively increased throughout FOM in

380 comparison to the late vitellogenic (LV) stage, with a 15% increase during oocyte maturation and a  
381 27% increase at ovulation to reach 36% during the post-ovulatory period (Fig 5, light blue). In contrast,  
382 a much more limited increase in water content was observed in the  $\geq 64$ h group. In comparison to the  
383 LV stage, a 2% increase in water content was observed during oocyte maturation while a 13% increase  
384 was monitored at ovulation that did not further increase during the post-ovulatory period.  
385 Observations in the  $< 64$ h group are fully consistent with existing data in rainbow trout that were  
386 obtained using the same methodology (Milla et al., 2006). In contrast the hydration in the  $\geq 64$ h  
387 appears to be drastically reduced. At all stages, the water increase was significantly lower in the  $\geq 64$ h  
388 group in comparison to the  $< 64$ h group. Together these results indicate that oocyte hydration is  
389 impaired during FOM occurring in low salinity water.

390 Oocyte hydration has been described for several species (Finn et al., 2002; LaFleur and Thomas, 1991;  
391 Milla et al., 2006; Watanabe and Kuo, 1986). Liberation of free amino acids and an uptake of inorganic  
392 ions occur during maturation. These events create a change in osmotic equilibrium, resulting in the  
393 passive transport of water molecule into the oocyte. This transport mechanism uses several proteins  
394 activity such as solute carriers,  $\text{Na}^+/\text{K}^+$  ATPases, Aquaporins, and demonstration was made that  
395 protein activity and hydration were closely dependent on  $\text{K}^+$  concentration in the medium (Ecker and  
396 Dennis Smith, 1971; LaFleur and Thomas, 1991).  $\text{K}^+$  and  $\text{Na}^+$  accumulation in the oocyte during  
397 maturation plays an important role in the oocyte hydration process. For *Fundulus heteroclitus*, oocytes  
398  $\text{Na}^+$  and  $\text{K}^+$  uptakes by gap junctions (Lubzens et al., 2010) are main responsible of osmolality increase  
399 (Greeley et al., 1991; Wallace et al., 1992). For Atlantic halibut *Hippoglossus hippoglossus*,  $\text{Cl}^-$  uptakes  
400 also contributes to the increase of oocyte osmolality (Finn et al., 2002). Together these studies  
401 demonstrate the importance of  $\text{Na}^+$ ,  $\text{K}^+$  and  $\text{Cl}^-$  ions for the oocyte hydration process during FOM. In  
402 contrast, the impact of low water salinity was never investigated, mostly because these experiments  
403 were often conducted in marine species. We hypothesize that FOM in low salinity water is associated  
404 in reduced ions uptake during maturation ultimately leading to incomplete oocyte hydration and

405 thereby causing a large variability in the timing of ovulation. Further investigations are needed to  
406 elucidate underlying mechanisms.

### 407 3.5 Low water concentration in chloride, sodium and potassium induces 408 dysregulated expression of ovulation genes

409 The ovulatory process involves the activation of a specific gene expression program that has been  
410 extensively documented in mammals (Richards et al., 2002) and in fish (Bobe et al., 2009, 2006; Cerdà  
411 et al., 2007; Fabra et al, 2005; Hajnik and Goetz, 1998; Knoll-Gellida, 2006). The inflammatory-like  
412 nature of the ovulatory process has been well characterized and the expression of many inflammation-  
413 related genes have been reported in various fish species (Hagiwara, 2020; Ohnishi, 2005; Takahashi,  
414 2019) including in rainbow trout (Bobe et al., 2006). A subset of these previously identified genes  
415 related to inflammation, proteolytic activity, or ion and water transport was monitored to characterize  
416 the ovulatory process in low salinity water.

#### 417 *Solute transporters and hydration-related genes are under-expressed in low salinity water*

418 Aquaporin are molecular channels responsible of passive water transport across membranes. The role  
419 of aquaporins during fish oocyte hydration has been described by several studies. The up-regulation  
420 of *aquaporin 4 (aqp4)* was reported during rainbow trout follicular maturation (Bobe et al., 2006),  
421 suggesting that oocyte hydration of fresh water fish is aquaporin mediated, in consistency with the  
422 demonstrated role of *aquaporin1-like* in oocyte hydration of saltwater fish (Cerdà, 2009; Fabra, 2005).  
423 The *solute carrier family 26 member 4* gene (*slc26a4*), previously known as *pendrin*, codes for a  
424 transmembrane anion exchanger and is involved in osmoregulation mechanisms (Nakada et al., 2005).  
425 Identified as dramatically up-regulated in the rainbow trout ovary during maturation, *slc26a4* is  
426 believed to play an important role in the osmotic regulation, causing water influx into oocyte during  
427 meiotic maturation. In the present study, a marked under expression of *slc26a4* and *aqp4* is observed  
428 in the ovary when FOM occurs in LSW (Fig 6). Given the role of both genes in ion and water transport,

429 this under expression is fully consistent with the impaired oocyte hydration observed in LSW, in  
430 comparison to the control group.

431 Vasotocin-neurophysin VT 1 (*vt1* gene) has two key roles in FOM-ovulation in catfish (Joy and Chaube,  
432 2015). It is an important link in the gonadotropin cascade controlling FOM and ovulation. By a common  
433 action with maturation inductions hormones, VT 1 is a regulator of germinal vesicle breakdown and  
434 meiosis resumption. VT 1 also plays a key role in follicular hydration by regulating the aquaporin action  
435 (Balment et al., 2006). Here we show a marked under expression of *vt1* observed in the LSW group in  
436 comparison to the control group (Fig 6). This profile is fully consistent with both the observed impaired  
437 ovulatory process and the under expression of *aquaporin 4*. In addition, the position of *vt1* in the  
438 gonadotropin-dependent regulatory cascade controlling oocyte maturation and ovulation suggests  
439 that it could be a relay in mediating the inhibitory effect of LSW.

#### 440 *Inflammation-related genes are under-expressed in low salinity water*

441 Ovulation is accompanied by a broad-spectrum proteolysis within follicular layers that involves a large  
442 number of proteases. Members of A Disintegrin and Metalloproteinase gene family are dramatically  
443 up-regulated during trout FOM-ovulation phases (Berndtson and Goetz, 1988; 1990; Bobe et al., 2006).  
444 Adam22 plays an important role in cell-to-cell and cell-to-matrix interaction regulation (White, 2003).  
445 By regulating or processing the deposit of the collagen fibrils, ADAMs proteases cause the extra-cellular  
446 matrix proteolysis (Ohnishi et al., 2005).

447 CXC chemokines stimulate recruitment of leukocytes and play a role of pro-inflammatory mediators.  
448 Cxcl14 implication in immune-related functions has been described in fish (Baoprasertkul et al., 2005).  
449 The over-expression of *cxcl14* during FOM-ovulation phases is fully in line with the inflammatory-like  
450 nature of the ovulatory process.

451 Coagulation factor V (*f5* gene) is involved in synthesis of blood coagulant factors and has been  
452 characterized in mammals and fish (Hanumanthaiah et al., 2002; Rothberger, 1984). It was speculated

453 that synthesis of coagulation factor V prevents bleeding caused by rupture of follicle layers during  
454 ovulation.

455 Here we show that *cxcl14*, *adam22*, and *f5* are dramatically under expressed during oocyte maturation  
456 in the LSW group in comparison to the control group (Fig 6). These expression profiles are consistent  
457 with the delayed ovulation observed in LSW and suggest that the inflammatory nature of ovulation is  
458 affected. This is especially true for *cxcl14* for which a 5-fold decrease in gene expression is observed in  
459 the LSW group in comparison to the control group. Together, these results show that several important  
460 components of the ovulatory process are toned down when FOM occurs in low salinity water. It is  
461 noteworthy that most, if not all, aspects of the ovulatory process including inflammation, coagulation,  
462 swelling, water and ion transport as well and proteolysis are under activated. Even if previous studies  
463 have shown gene expression changes when fish adapt to water salinity change (e.g. migration,  
464 precipitation) for salmonids (Morro, 2020; Norman et al., 2014) and other species (Fiol, 2006; Pujante,  
465 2018), evidence of such an impact of low water salinity on the overall ovulatory process were, to our  
466 knowledge, previously unreported. This raises the question of how low water salinity can inhibit the  
467 overall ovulatory process and not only osmotic exchanges.

### 468 3.6 Lower blood plasma levels of sodium, chloride and potassium are observed in the 469 LSW site

470 In order to assess the impact of water concentration in chloride, sodium and potassium on fish  
471 homeostasis, we measured blood plasma concentration in these three elements in both control and  
472 LSW sites. We observed a significantly lower plasmatic concentration of these three mineral elements  
473 in fish of the LSW site in comparison to the control site (Fig 1.B). This indicates that the water  
474 composition can lead to significant differences in plasma concentration in these elements. This also  
475 further supports our hypothesis that reproduction in fresh water exhibiting low sodium, chloride and  
476 potassium concentration perturbrates the fish oocyte osmolarity and the hydration process during final  
477 oocyte maturation and ovulation.

### 478 3.7 Role of other water components

479 While marked and highly significant differences in water concentration of chloride, sodium and  
480 potassium are found between the two experimental sites, other differences exist in water composition  
481 that could also contribute, at least in part, to the impaired FOM and ovulation and reduced egg quality  
482 phenotype observed in the LSW site. A lower concentration in Iron (Fe) and Manganese (Mn) is  
483 observed in the LSW site in comparison to the control site. For Iron, the difference is however not  
484 significant when only the reproductive period is considered (Supplemental datafile 2). Manganese  
485 (Mn) is known to inhibit ovulation in rainbow trout (Jalabert and Szollosi, 1975) and inhibit meiotic  
486 maturation in terrestrial animals (Bilodeau-Goeseels, 2001). It is therefore difficult to link low Mn  
487 concentration with impaired FOM and ovulation. In addition, it is commonly accepted that the diet is  
488 considered to be the major source of Manganese and Iron (Lall, 2002). It is therefore extremely unlikely  
489 that the lower water concentration in Mn and Fe found in the LSW site is responsible for the impaired  
490 reproductive phenotype observed in the LSW site. Similarly, a lower nitrate concentration was  
491 observed in the LSW site. While we cannot rule out that this could contribute to the abnormal  
492 reproductive phenotype observed in the LSW site, this seems however, to our knowledge and in the  
493 light of previous studies led on salmonids and others fish species (Dolomatov, 2011; Tripathi and  
494 Krishna, 2008), extremely unlikely.

## 495 4 Conclusion

496 Here we show that low water concentration in chloride, sodium and potassium negatively influences  
497 final oocyte maturation, ovulation and, ultimately, egg quality. Low salinity water triggers delayed  
498 ovulation and lower oocyte viability. When investigating the impact of LSW on FOM duration,  
499 individuals presenting the most severe phenotypes exhibited impaired oocyte hydration and  
500 abnormally reduced gene expression levels of several key players of the ovulatory process. While the  
501 under expression of water (i.e., aquaporins) and ion (i.e., solute carriers) transporters is consistent with  
502 impaired oocyte hydration, our observations also indicate that the entire ovulatory gene expression

503 sequence is disrupted. Our results raise the question of the mechanisms underlying the negative  
504 influence of low water concentration in chloride, sodium and potassium on the dynamics of the  
505 preovulatory phase, on the control of the oocyte homeostasis, including hydration, and on the overall  
506 success of the maturation-ovulatory process. A global analysis of differentially regulated genes in LSW  
507 during final oocyte maturation is needed to unravel these mechanisms.

508

509

## 510 **5 Declarations**

### 511 5.1 Competing interests

512 The authors declare no competing interest.

### 513 5.2 Authors' contributions

514 ES conceived the study, performed experiments and data analysis and drafted the manuscript. EC  
515 participated in experiments. SS-K and FC participated in the design of the study. JB conceived the  
516 study and participated in manuscript writing and data analysis.

### 517 5.3 Funding

518 This work was supported by the National Association for Technologic Research (ANRT) [grant number  
519 2018/0457]; the Nouvelle-Aquitaine regional council [grant number 3379120].

520 Funding sources have no involvement in the conduct of the research.

### 521 5.4 Acknowledgements

522 The authors thank Floriane Colon and Viviers Company staff for their help in fish rearing. The authors  
523 thank the Nouvelle-Aquitaine regional council and ANRT for the financial support which allowed the  
524 study.

525

## 526 **6 Figure legends**

527 *Color should be used for all figures in print.*

### 528 **Figure 1: Water and plasma composition on both experimental sites**

529 A: Distribution of Potassium, Chloride and Sodium concentration (mg/L) in Control (in grey, n=12) and  
530 Low Salinity Water (in blue, n=12) sites.

531 B: Distribution of Potassium, Chloride and Sodium concentration (g/L) in fish blood plasma reared in  
532 Control (in grey, n=11) and Low Salinity Water (in blue, n=9) sites.

### 533 **Figure 2: Egg quality in the two experimental sites**

534 A: Occurrence of non-viable eggs in batches evaluated using the VisEgg system in Control (n=18) and  
535 LSW (n=30) groups. Khi-2 test ( $p = 0.007$ ).

536 B: Rate (percent) of non-viable eggs evaluated using the VisEgg system in Control (n=18) and LSW  
537 (n=30) groups.

### 538 **Figure 3: Ultrasound staging for measure of maturation duration**

539 A: Echograph-based observation of oocyte changes during final oocyte maturation. Changes in oocyte  
540 aspect from LV to MAT is illustrated by a progressive central darkening, with brightening of peripheral  
541 layer before ovulation.

542 B: Pictures of direct observation of oocytes classified by stage. Oocyte were obtained by stripping and  
543 defolliculation (Finet et al., 1988). Yolk clarification and lipid droplet formation are observable.

544 C: Distribution of maturation duration evaluated by ultrasound in Control (n=18) and LSW (n=30) from  
545 central oocyte clarification and ovulation.

### 546 **Figure 4: Egg quality depending on the duration of oocyte maturation**



547 A: Percentage of females exhibiting non-viable eggs in low salinity water, evaluated using the VisEgg  
548 system. Individuals are separated in two groups depending on the duration of oocyte maturation  
549 ( $\text{Mat} < 64\text{H}$ ,  $n=10$ ;  $\text{Mat} \geq 64\text{H}$ ,  $n=20$ ). Khi-2 test ( $p = 1.34\text{E-}04$ ).

550 B: Percentage of non-viable eggs depending on the duration of oocyte maturation ( $\text{Mat} < 64\text{H}$ ,  $n=10$ ;  
551  $\text{Mat} \geq 64\text{H}$ ,  $n=20$ ).

#### 552 **Figure 5: Hydration of oocytes during final oocyte maturation**

553 Increase of oocyte water content (WC), in comparison to late vitellogenic stage, for oocytes sampled  
554 at four ovarian stages: Late-Vitellogenesis (LV), oocyte maturation (Mat), ovulation (Ov) and 3 days  
555 post-ovulation (Post-Ov). Individuals are separated in two groups based on the duration of oocyte  
556 maturation ( $\text{Mat} < 64\text{H}$ ,  $n=4$ ;  $\text{Mat} \geq 64\text{H}$ ,  $n=4$ ).

#### 557 **Figure 6: Ovarian expression profiles of genes involved in FOM and ovulation**

558 Ovarian expression profiles of *aqp4*, *slc26*, *cf5*, *adam22*, *cxcl14* and *vt5* during oocyte maturation in  
559 control ( $n = 10$ ) and low salinity water (LSW,  $n = 11$ ) groups. Messenger RNA abundance was measured  
560 using real-time PCR and normalized using the abundance of 18S. Abundance was arbitrarily set to 1 in  
561 the LV stage in each group.

562

563

564

565

566

567

568

569

570 **7 Additional Files**

	CONTROL		LSW		
	Mean	SD	Mean	SD	
Conductivity (µS/cm)	<b>264,00</b>	41,64	<b>248,92</b>	34,07	
<b>Major ions, in milligrams per liter</b>					
Bicarbonate	<b>145,50</b>	17,77	<b>140,00</b>	17,04	
Calcium	<b>44,79</b>	8,57	<b>43,60</b>	5,78	
Chloride	<b>2,29</b>	0,84	<b>1,24</b>	0,39	*
Magnesium	<b>4,29</b>	0,51	<b>5,16</b>	2,41	
Potassium	<b>0,47</b>	0,13	<b>0,21</b>	0,09	*
Sodium	<b>1,83</b>	0,28	<b>1,09</b>	0,27	*
Sulfur	<b>3,03</b>	0,79	<b>5,08</b>	3,32	*
Sulfate	<b>8,33</b>	2,06	<b>13,05</b>	9,54	
<b>Nutrients, in milligrams per liter</b>					
Nitrate	<b>2,92</b>	1,28	<b>1,03</b>	0,27	*
<b>Trace elements, in micrograms per liter</b>					
Copper	<b>0,22</b>	0,09	<b>0,14</b>	0,07	
Iron	<b>14,99</b>	14,12	<b>3,00</b>	4,58	*
Manganese	<b>1,47</b>	1,28	<b>0,15</b>	0,18	*
Selenium	<b>0,13</b>	0,02	<b>0,15</b>	0,05	
Iode	<b>1,35</b>	0,53	<b>1,04</b>	0,18	
Zinc	<b>1,37</b>	0,70	<b>1,35</b>	0,83	

571

572 **Supplemental data file 1: Water composition in control (Rébénacq) and LSW**  
 573 **(Sarrance) sites.**

574 Mean (N= 12) yearly (2020-2021) values and standard deviation are shown. Difference between LSW  
 575 and control water were analyzed using non-parametric U-tests.

576 \* denotes significant differences.

577

	CONTROL		LSW		
	Mean	SD	Mean	SD	
Conductivity (µS/cm)	<b>282.00</b>	20.785	<b>242.67</b>	29.48	
<b>Major ions, in milligrams per liter</b>					
Bicarbonate	<b>154.50</b>	25.05	<b>143.67</b>	10.97	
Calcium	<b>48.97</b>	5.11	<b>42.43</b>	4.66	
Chloride	<b>2.98</b>	0.45	<b>1.47</b>	0.06	*
Magnesium	<b>4.59</b>	0.32	<b>3.51</b>	2.66	

Potassium	<b>0.60</b>	0.19	<b>0.18</b>	0.04	*
Sodium	<b>2.02</b>	0.17	<b>0.99</b>	0.18	*
Sulfur	<b>3.60</b>	0.09	<b>3.10</b>	2.82	
Sulfate	<b>9.70</b>	0.65	<b>9.5</b>	8.37	
<b>Nutrients, in milligrams per liter</b>					
Nitrate	<b>4.09</b>	1.79	<b>1.11</b>	0.09	*
<b>Trace elements, in micrograms per liter</b>					
Copper	<b>0.26</b>	0.15	<b>0.16</b>	0.13	
Iron	<b>8.07</b>	6.72	<b>2.00</b>	0.44	
Manganese	<b>0.70</b>	0.33	<b>0.12</b>	0.07	*
Selenium	<b>0.13</b>	0.01	<b>0.17</b>	-	
Iode	<b>1.45</b>	0.50	<b>1.15</b>	0.08	
Zinc	<b>1.26</b>	0.56	<b>1.44</b>	0.54	

578

579 **Supplemental data file 2: Water composition in control (Rébénacq) and LSW**

580 **(Sarrance) site during the reproductive period (October-December).**

581 Mean (N= 3) values (from 2020-10-15 to 2020-12-15) and standard deviation are shown. Difference

582 between LSW and control water were analyzed using non-parametric U-tests.

583 \* denotes significant differences.

584

585

586

587

588

589

590

591

592

593

## 594 8 References

- 595 Aegerter, S., Jalabert, B., 2004. Effects of post-ovulatory oocyte ageing and temperature on egg quality  
596 and on the occurrence of triploid fry in rainbow trout, *Oncorhynchus mykiss*. *Aquaculture* 231,  
597 59–71. <https://doi.org/10.1016/j.aquaculture.2003.08.019>
- 598 Aegerter, S., Jalabert, B., & Bobe, J., 2005. Large scale real-time PCR analysis of mRNA abundance in  
599 rainbow trout eggs in relationship with egg quality and post-ovulatory ageing. *Molecular*  
600 *Reproduction and Development: Incorporating Gamete Research*, 72(3), 377-385.  
601 <https://doi.org/10.1002/mrd.20361>
- 602 Atse, C.B., Audet, C., De La Noüe, J., 2002. Effects of temperature and salinity on the reproductive  
603 success of Arctic charr, *Salvelinus alpinus* (L.): Egg composition, milt characteristics and fry  
604 survival. *Aquac. Res.* 33, 299–309. <https://doi.org/10.1046/j.1355-557x.2002.00674.x>
- 605 Balment, R.J., Lu, W., Weybourne, E., Warne, J.M., 2006. Arginine vasotocin a key hormone in fish  
606 physiology and behaviour : A review with insights from mammalian models. *General and*  
607 *comparative endocrinology.* 147, 9–16. <https://doi.org/10.1016/j.ygcen.2005.12.022>
- 608 Baoprasertkul, P., He, C., Peatman, E., Zhang, S., Li, P., Liu, Z., 2005. Constitutive expression of three  
609 novel catfish CXC chemokines: Homeostatic chemokines in teleost fish. *Mol. Immunol.* 42, 1355–  
610 1366. <https://doi.org/10.1016/j.molimm.2004.12.012>
- 611 Berndtson, K., Goetz, W., 1988. Protease activity in brook trout (*Salvelinus fontinalis*) follicle walls  
612 demonstrated by substrate-polyacrylamide gel electrophoresis. *Biol. Reprod.* 38 (2), 511–516.  
613 <https://doi.org/10.1095/biolreprod38.2.511>
- 614 Berndtson, A.K., Goetz, F.W., 1990. Metallo-protease activity increases prior to ovulation in brook trout  
615 (*Salvelinus fontinalis*) and yellow perch (*Perca flavescens*) follicle walls. *Biol. Reprod.* 42, 391–398
- 616 Billard, R., Bry, C., Gillet, C., 1981. Stress, environment and reproduction in teleost fish. *Stress and fish*,  
617 Academic Press, 0-12-554550-9. hal-01600274

618 Bilodeau-Goeseels, S., 2001. Manganese inhibits spontaneous nuclear maturation in bovine cumulus-  
619 enclosed oocytes. *Can. J. Anim. Sci.* 81, 223–228. <https://doi.org/10.4141/A00-074>

620 Bobe, J., 2015. Egg quality in fish: Present and future challenges. *Anim. Front.* 5, 66–72.  
621 <https://doi.org/10.2527/af.2015-0010>

622 Bobe, J., Labbé, C., 2010. Egg and sperm quality in fish. *Gen. Comp. Endocrinol.* 165, 535–548.  
623 <https://doi.org/10.1016/j.ygcen.2009.02.011>

624 Bobe, J., Montfort, J., Nguyen, T., Fostier, A., 2006. Identification of new participants in the rainbow  
625 trout (*Oncorhynchus mykiss*) oocyte maturation and ovulation processes using cDNA  
626 microarrays. *Reprod. Biol. Endocrinol.* 4, 1–16. <https://doi.org/10.1186/1477-7827-4-39>

627 Bobe, J., Nguyen, T., Fostier, A., 2009. Ovarian function of the trout preovulatory ovary: New insights  
628 from recent gene expression studies. *Comp. Biochem. Physiol. - A Mol. Integr. Physiol.* 153, 63–  
629 68. <https://doi.org/10.1016/j.cbpa.2008.10.021>

630 Bobe, J., Nguyen, T., Jalabert, B., 2004. Targeted gene expression profiling in the rainbow trout  
631 (*Oncorhynchus mykiss*) ovary during maturational competence acquisition and oocyte  
632 maturation. *Biol. Reprod.* 71, 73–82. <https://doi.org/10.1095/biolreprod.103.025205>

633 Bobe, J., Goetz, F.W., 2000. A tumor necrosis factor decoy receptor homologue is up-regulated in the  
634 brook trout (*Salvelinus fontinalis*) ovary at the completion of ovulation. *Biol. Reprod.* 62(2):420-6.  
635 <https://doi.org/10.1095/biolreprod62.2.420>

636 Bonnet, E., Montfort, J., Esquerre, D., Hugot, K., Fostier, A., Bobe, J., 2007. Effect of photoperiod  
637 manipulation on rainbow trout (*Oncorhynchus mykiss*) egg quality: A genomic study. *Aquaculture*  
638 268, 13–22. <https://doi.org/10.1016/j.aquaculture.2007.04.027>

639 Breton, B., Govoroun, M., Mikolajczyk, T., 1998. GTH I and GTH II secretion profiles during the  
640 reproductive cycle in female rainbow trout: Relationship with pituitary responsiveness to GnRH-  
641 a stimulation. *Gen. Comp. Endocrinol.* 111, 38–50. <https://doi.org/10.1006/gcen.1998.7088>

642 Bromage, N., Jones, J., 1992. The effects of seasonal alterations in ration on fecundity and maturation  
643 in rainbow trout (*Oncorhynchus mykiss*). *Proc. Br. Soc. Anim. Prod.* 1992, 81–81.  
644 <https://doi.org/10.1017/s03082296000219422>

645 Bromage, N., Jones, J., Randall, C., Thrush, M., Davies, B., Springate, J., Duston, J., Barker, G., 1992.  
646 Broodstock management, fecundity, egg quality and the timing of egg production in the rainbow  
647 trout (*Oncorhynchus mykiss*). *Aquaculture* 100, 141–166. [https://doi.org/10.1016/0044-](https://doi.org/10.1016/0044-8486(92)90355-0)  
648 [8486\(92\)90355-0](https://doi.org/10.1016/0044-8486(92)90355-0)

649 Brooks, S., Tyler, C.R., Sumpter, J.P., 1997. Egg quality in fish: What makes a good egg? *Rev. Fish Biol.*  
650 *Fish.* 7, 387–416. <https://doi.org/10.1023/A:1018400130692>

651 Bry, C., 1981. Temporal aspects of macroscopic changes in rainbow trout (*Salmo gairdneri*) oocytes  
652 before ovulation and of ova fertility during the post-ovulation period; effect of treatment with  
653  $17\alpha$ -hydroxy- $20\beta$ -dihydroprogesterone. *Aquaculture* 24, 153–160.  
654 [https://doi.org/10.1016/0044-8486\(81\)90052-1](https://doi.org/10.1016/0044-8486(81)90052-1)

655 Cardona E., Bugeon J., Segret E., Bobe J., 2020. VisEgg: a robust phenotyping tool to assess rainbow  
656 trout egg features and viability. *Fish Physiol Biochem.* Epub ahead of print.  
657 <https://doi.org/10.1007/s10695-020-00844-2>

658 Carrillo, M., Bromage, N., Zanuy, S., Serrano, R., Prat, F., 1989. The effect of modifications in  
659 photoperiod on spawning time, ovarian development and egg quality in the sea bass  
660 (*Dicentrarchus labrax* L.). *Aquaculture* 81, 351–365. [https://doi.org/10.1016/0044-](https://doi.org/10.1016/0044-8486(89)90159-2)  
661 [8486\(89\)90159-2](https://doi.org/10.1016/0044-8486(89)90159-2)

662 Cerdà, J., Fabra, M., Raldúa, D., 2007. Physiological and molecular basis of fish oocyte hydration. *Fish*  
663 *Oocyte From Basic Stud. to Biotechnol. Appl.* 349–396. [https://doi.org/10.1007/978-1-4020-](https://doi.org/10.1007/978-1-4020-6235-3-12)  
664 [6235-3-12](https://doi.org/10.1007/978-1-4020-6235-3-12)

665 Cerdà, J., 2009. Molecular pathways during marine fish egg hydration: The role of aquaporins. *J. Fish*  
666 *Biol.* 75, 2175–2196. <https://doi.org/10.1111/j.1095-8649.2009.02397.x>

667 Colson V, Cousture M, Damasceno D, Valotaire C, Nguyen T, Le Cam A, Bobe J. Maternal temperature  
668 exposure impairs emotional and cognitive responses and triggers dysregulation of  
669 neurodevelopment genes in fish. PeerJ. 2019 Jan 31;7:e6338. doi: 10.7717/peerj.6338. PMID:  
670 30723624; PMCID: PMC6360074.

671 Craik, J.C.A., Harvey, S.M., 1984. Biochemical changes occurring during final maturation of eggs of  
672 some marine and freshwater teleosts. J. Fish Biol. 24, 599–610. [https://doi.org/10.1111/j.1095-](https://doi.org/10.1111/j.1095-8649.1984.tb04830.x)  
673 [8649.1984.tb04830.x](https://doi.org/10.1111/j.1095-8649.1984.tb04830.x)

674 Dolomatov, S.I., Shekk, P. V., Zukow, W., Kryukova, M.I., 2011. Features of nitrogen metabolism in  
675 fishes. Rev. Fish Biol. Fish. 21, 733–737. <https://doi.org/10.1007/s11160-011-9212-z>

676 Dolomatov, S.I., Zukow, W., Novikov, N.Y., Muszkieta, R., Bulatowicz, I., Dzierzanowski, M.,  
677 Kazmierczak, U., Strojek, K., 2012. The regulation of osmotic and ionic balance in fish  
678 reproduction and in the early stages of ontogeny. Russ. J. Mar. Biol. 38, 365–374.  
679 <https://doi.org/10.1134/S1063074012050057>

680 Ecker, R.E., Dennis Smith, L., 1971. Influence of exogenous ions on the events of maturation in *Rana*  
681 *pipiens* oocytes. J. Cell. Physiol. 77, 61–70. <https://doi.org/10.1002/jcp.1040770108>

682 Escaffre, A. M., Billard, R., 1979. Évolution de la fécondabilité des ovules de truite arc-en-ciel (*Salmo*  
683 *gairdneri*) laissés dans la cavité abdominale au cours de la période post-ovulatoire. Bulletin  
684 Français de Pisciculture. 272, 56-70. <https://doi.org/10.1051/kmae:1979012>

685 Espey, L.L., 1994. Current status of the hypothesis that mammalian ovulation is comparable to an  
686 inflammatory reaction. Biol. Reprod. 50, 233–238. <https://doi.org/10.1095/biolreprod50.2.233>

687 Fabra, M., Raldúa, D., Power, D. M., Deen, P. M., & Cerda, J., 2005. Marine fish egg hydration is  
688 aquaporin-mediated. Science. 307(5709), 545-545. <https://doi.org/10.1126/science.1106305>

689 Finet, B., Jalabert, B., & Garg, S. K., 1988. Effect of defolliculation and 17 $\alpha$ -hydroxy, 20 $\beta$ -  
690 dihydroprogesterone on cyclic AMP level in full-grown oocytes of the rainbow trout, *Salmo*

691           gairdneri. Gamete research, 19(3), 241-252. <https://doi.org/10.1002/mrd.1120190304>

692 Finn, R.N., Østby, G.C., Norberg, B., Fyhn, H.J., 2002. In vivo oocyte hydration in Atlantic halibut  
693 (Hippoglossus hippoglossus); proteolytic liberation of free amino acids, and ion transport, are  
694 driving forces for osmotic water influx. J. Exp. Biol. 205, 211–224.  
695 <https://doi.org/10.1242/jeb.205.2.211>

696 Fiol, D.F., Chan, S.Y., Kültz, D., 2006. Regulation of osmotic stress transcription factor 1 (Ostf1) in tilapia  
697 (Oreochromis mossambicus) gill epithelium during salinity stress. J Exp Biol Aug;209(Pt 16):3257-  
698 65. doi: 10.1242/jeb.02352. PMID: 16888073.

699 Fostier A, Breton B, Jalabert B, Marcuzzi O, 1981. Evolution des niveaux plasmatiques de la  
700 gonadotropine glycoprotéique et de la 17 alpha hydroxy-20 beta dihydroprogestérone au cours  
701 de la maturation et de l'ovulation chez la Truite arc-en-ciel. Salmo gairdnerii. CR Seances Acad.  
702 Sci. III. 293(15):817-20. French. PMID: 6804018.

703 Goetz, F.W., Bergman, H.L., 1978. The effects of steroids on final maturation and ovulation of oocytes  
704 from brook trout (*Salvelinus fontinalis*) and yellow perch (*Perca flavescens*). Biol. Reprod. 18,  
705 293–298. <https://doi.org/10.1095/biolreprod18.2.293>

706 Gray, J., 1932. The osmotic properties of the eggs of the trout (*Salmo Fario*). Journal of Experimental  
707 Biology. 9(3), 277-299. <https://doi.org/10.1242/jeb.9.3.277>

708 Greeley Jr, M. S., Hols, H., Wallace, R. A., 1991. Changes in size, hydration and low molecular weight  
709 osmotic effectors during meiotic maturation of *Fundulus* oocytes in vivo. Comparative  
710 Biochemistry and Physiology, Part A: Physiology. 100(3), 639-647. [https://doi.org/10.1016/0300-9629\(91\)90383-N](https://doi.org/10.1016/0300-9629(91)90383-N)

712 Grier, H.J., Uribe, M.C., Parenti, L.R., 2007. Germinal epithelium, folliculogenesis, and postovulatory  
713 follicles in ovaries of rainbow trout, *Oncorhynchus mykiss* (Walbaum, 1792). J Morphol. 268(4),  
714 293-310. <https://doi.org/10.1002/jmor.10518>



715 Haffray, P., Fostier, A., M., Jalabert, B., 1995. Influence du maintien en mer ou de la période de transfert  
716 en eau douce des reproducteurs de saumon atlantique *Salmo salar* sur la maturation sexuelle et  
717 la qualité des gamètes. *Aquatic Living Resources*. 8(2), 135-145.  
718 <https://doi.org/10.1051/alr:1995010>

719 Hajnik, C.A., Goetz, F.W., Hsu, S.Y., Sokal, N., 1998. Characterization of a ribonucleic acid transcript from  
720 the brook trout (*Salvelinus fontinalis*) ovary with structural similarities to mammalian  
721 adipsin/complement factor D and tissue kallikrein, and the effects of kallikrein-like serine  
722 proteases on follicle contraction. *Biol Reprod*. 58(4):887-97.  
723 <https://doi.org/10.1095/biolreprod58.4.887>

724 Hagiwara A, Ogiwara K, Sugama N, Yamashita M, Takahashi T, 2020. Inhibition of medaka ovulation by  
725 gap junction blockers due to its disrupting effect on the transcriptional process of LH-induced  
726 Mmp15 expression. *Gen Comp Endocrinol*. 1;288:113373.  
727 <https://doi.org/10.1016/j.ygcen.2019.113373>

728 Hanumanthaiah, R., Day, K., Jagadeeswaran, P., 2002. Comprehensive analysis of blood coagulation  
729 pathways in teleostei: Evolution of coagulation factor genes and identification of Zebrafish factor  
730 VIII. *Blood Cells, Mol. Dis*. 29, 57–68. <https://doi.org/10.1006/bcmd.2002.0534>

731 Hurk, R. van den, Peute, J., 1979. Cyclic changes in the ovary of the rainbow trout, *Salmo gairdneri*,  
732 with special reference to sites of steroidogenesis. *Cell Tissue Res*. 199, 289–306.  
733 <https://doi.org/10.1007/BF00236140>

734 Hsu, S., Goetz, F.W., Sciences, B., Dame, N., Dame, N., 1992. Angiotensins stimulate in vitro ovulation  
735 and contraction of brook trout (*Salvelinus fontinalis*) follicles. *Fish Physiol. Biochem*. 10, 277–282.  
736 <https://doi.org/10.1007/BF00004476>

737 Izquierdo, M.S., Fernández-Palacios, H., Tacon, A.G.J., 2001. Effect of broodstock nutrition on  
738 reproductive performance of fish. *Aquaculture*. 197, 25–42. [https://doi.org/10.1016/S0044-](https://doi.org/10.1016/S0044-8486(01)00581-6)  
739 [8486\(01\)00581-6](https://doi.org/10.1016/S0044-8486(01)00581-6)

740 Jalabert B, Breton B, Bry C., 1972. Maturation et ovulation in vitro des ovocytes de la truite arc-en-ciel  
741 *Salmo gairdneri*. CR Acad Hebd Seances Acad Sci D. 11;275(11):1139-42. French. PMID: 4196379.

742 Jalabert, B., Fostier, A., 1984. The follicular sensitivity in vitro to maturation-inducing hormones in  
743 rainbow trout, *Salmo gairdnerii*: role of oestradiol-17 $\beta$ . Aquaculture. 43(1-3), 1-11.  
744 [https://doi.org/10.1016/0044-8486\(84\)90004-8](https://doi.org/10.1016/0044-8486(84)90004-8)

745 Jalabert, B., 1976. In vitro oocyte maturation and ovulation in rainbow trout (*Salmo gairdnerii*),  
746 Northern Pike (*Esox lucius*), and Goldfish (*Carassius auratus*). J. Fish. Res. Board Canada. 33, 974–  
747 988. <https://doi.org/10.1139/f76-124>

748 Jalabert, B., Theron, M. C., Heydorff, M., 1978. Production of fertilizable oocytes from follicles of  
749 rainbow trout (*Salmo gairdnerii*) following in vitro maturation and ovulation. Annales de Biologie  
750 Animale Biochimie Biophysique (Vol. 18, No. 2B, pp. 461-470). EDP Sciences.

751 Jalabert, B., Szöllösi, D., 1975. In vitro ovulation of trout oocytes : Effect of prostaglandins on smooth  
752 muscle-like cells of the theca. Prostaglandins. 765–778. [https://doi.org/10.1016/0090-](https://doi.org/10.1016/0090-6980(75)90113-6)  
753 [6980\(75\)90113-6](https://doi.org/10.1016/0090-6980(75)90113-6)

754 Joy, K.P., Chaube, R., 2015. General and Comparative Endocrinology Vasotocin – A new player in the  
755 control of oocyte maturation and ovulation in fish. Gen. Comp. Endocrinol.  
756 <https://doi.org/10.1016/j.ygcen.2015.02.013>

757 Knoll-Gellida, A., André, M., Gattegno, T., Forgue, J., Admon, A., & Babin, P. J., 2006. Molecular  
758 phenotype of zebrafish ovarian follicle by serial analysis of gene expression and proteomic  
759 profiling, and comparison with the transcriptomes of other animals. BMC genomics. 7(1), 1-28.  
760 <https://doi.org/10.1186/1471-2164-7-46>

761 LaFleur, G.J., Thomas, P., 1991. Evidence for a role of Na<sup>+</sup>,K<sup>+</sup>-ATPase in the hydration of Atlantic  
762 croaker and spotted seatrout oocytes during final maturation. J. Exp. Zool. 258, 126–136.  
763 <https://doi.org/10.1002/jez.1402580114>

- 764 Lahnsteiner, F., 2000. Morphological, physiological and biochemical parameters characterizing the  
765 over-ripening of rainbow trout eggs. *Fish physiology and biochemistry*. 23(2), 107-118.  
766 <https://doi.org/10.1023/A:1007839023540>
- 767 Lall, S.P., 2003. The Minerals. *Fish Nutr.* 259–308.  
768 <https://doi.org/10.1016/b978-012319652-1/50006-9>
- 769 Lubzens, E., Young, G., Bobe, J., Cerdà, J., 2010. Oogenesis in teleosts: How fish eggs are formed. *Gen.*  
770 *Comp. Endocrinol.* 165, 367–389. <https://doi.org/10.1016/j.yggen.2009.05.022>
- 771 Maise, G., Billard, R., Cosson, J., Labbé, C., Loir, M., Le Gac, F., & Fierville, F., 1998. Influence du  
772 maintien en mer des mâles de saumon atlantique (*Salmo salar*), pendant la période de  
773 reproduction, sur la qualité du sperme. *Bulletin Français de la Pêche et de la Pisciculture*. (350-  
774 351), 349-357. <https://doi.org/10.1051/kmae:1998010>
- 775 Marshall, W.S., Habibi, H.R., Lessman, C.A., 1985. Electrophysiology of oocytes during meiotic  
776 maturation and after ovulation in brook trout (*Salvelinus fontinalis*). *Can. J. Zool.* 63, 1904–1908.  
777 <https://doi.org/10.1139/z85-283>
- 778 Milla, S., Jalabert, B., Rime, H., Prunet, P., Bobe, J., 2006. Hydration of rainbow trout oocyte during  
779 meiotic maturation and in vitro regulation by 17,20 $\beta$ -dihydroxy-4-pregnen-3-one and cortisol. *J.*  
780 *Exp. Biol.* 209, 1147–1156. <https://doi.org/10.1242/jeb.02094>
- 781 Morro, B., Doherty, M.K., Balseiro, P., Handeland, S.O., Albalat, A., 2020. Plasma proteome profiling of  
782 freshwater and seawater life stages of rainbow trout (*Oncorhynchus mykiss*). *PLoS One*. 2020 Jan  
783 3;15(1):e0227003. <https://doi.org/10.1371/journal.pone.0227003>
- 784 Nakada, T., Zandi-Nejad, K., D.B., Hirose, S., 2005. Roles of Slc13a1 and Slc26a1 sulfate transporters of  
785 eel kidney in sulfate homeostasis and osmoregulation in freshwater. *Am. J. Physiol. - Regul.*  
786 *Integr. Comp. Physiol.* 289. <https://doi.org/10.1152/ajpregu.00725.2004>
- 787 Nevoux, M., Marchand, F., Forget, G., Huteau, D., Tremblay, J., & Destouches, J. P., 2019. Field

788 assessment of precocious maturation in salmon parr using ultrasound imaging. *Peer Community*  
789 *in Ecology*, 1101/425561.

790 Norman, J.D., Ferguson, M.M., Danzmann, R.G., 2014. Transcriptomics of salinity tolerance capacity in  
791 Arctic charr (*Salvelinus alpinus*): a comparison of gene expression profiles between divergent QTL  
792 genotypes. *Physiol Genomics*. 2014 Feb 15;46(4):123-37.  
793 <https://doi.org/10.1152/physiolgenomics.00105.2013>

794 Ohnishi, J., Ohnishi, E., Shibuya, H., Takahashi, T., 2005. Functions for proteinases in the ovulatory  
795 process. *Biochimica et Biophysica Acta (BBA)-Proteins and Proteomics*. 1751(1), 95-109.  
796 <https://doi.org/10.1016/j.bbapap.2005.05.002>

797 Pankhurst, N.W., Purser, G.J., Van Der Kraak, G., Thomas, P.M., Forteach, G.N.R., 1996. Effect of holding  
798 temperature on ovulation, egg fertility, plasma levels of reproductive hormones and in vitro  
799 ovarian steroidogenesis in the rainbow trout *Oncorhynchus mykiss*. *Aquaculture*. 146, 277–290.  
800 [https://doi.org/10.1016/S0044-8486\(96\)01374-9](https://doi.org/10.1016/S0044-8486(96)01374-9)

801 Patiño, R., Sullivan, C. V., 2002. Ovarian follicle growth, maturation, and ovulation in teleost fish. *Fish*  
802 *Physiology and Biochemistry*. 26(1), 57-70. <https://doi.org/10.1023/A:1023311613987>

803 Pujante, I. M., Moyano, F. J., Martos-Sitcha, J. A., Mancera, J. M., & Martínez-Rodríguez, G., 2018. Effect  
804 of different salinities on gene expression and activity of digestive enzymes in the thick-lipped grey  
805 mullet (*Chelon labrosus*). *Fish physiology and biochemistry*, 44(1), 349–373.  
806 <https://doi.org/10.1007/s10695-017-0440-6>

807 Richards, J.A.S., Russell, D.L., Ochsner, S., Espey, L.L., 2002. Ovulation: New dimensions and new  
808 regulators of the inflammatory-like response. *Annu. Rev. Physiol.* 64, 69–92.  
809 <https://doi.org/10.1146/annurev.physiol.64.081501.131029>

810 Rothberger, H., McGee, M. P., 1984. Generation of coagulation factor V activity by cultured rabbit  
811 alveolar macrophages. *The Journal of experimental medicine*. 160(6), 1880-1890.  
812 <https://doi.org/10.1084/jem.160.6.1880>

813 Samarin, A.M., Ahmadi, M.R., Azuma, T., Rafiee, G.R., Amiri, B.M., Naghavi, M.R., 2008. Influence of  
814 the time to egg stripping on eyeing and hatching rates in rainbow trout *Oncorhynchus mykiss*  
815 under cold temperatures. *Aquaculture*. 278, 195–198.  
816 <https://doi.org/10.1016/j.aquaculture.2008.03.034>

817 Samarin, A.M., Policar, T., Lahnsteiner, F., 2015. Fish oocyte ageing and its effect on egg quality. *Rev.*  
818 *Fish. Sci. Aquac.* 23, 302–314. <https://doi.org/10.1080/23308249.2015.1053560>

819 Springate, J.R.C., Bromage, N.R., Elliott, J.A.K., Hudson, D.L., 1984. The timing of ovulation and stripping  
820 and their effects on the rates of fertilization and survival to eyeing, hatch and swim-up in the  
821 rainbow trout (*Salmo gairdneri* R.). *Aquaculture* 43, 313–322. [https://doi.org/10.1016/0044-](https://doi.org/10.1016/0044-8486(84)90032-2)  
822 [8486\(84\)90032-2](https://doi.org/10.1016/0044-8486(84)90032-2)

823 Takahashi, T., Hagiwara, A., Ogiwara, K., 2019. Follicle rupture during ovulation with an emphasis on  
824 recent progress in fish models. *Reproduction*. 157(1):R1-R13. [https://doi.org/10.1530/REP-18-](https://doi.org/10.1530/REP-18-0251)  
825 [0251](https://doi.org/10.1530/REP-18-0251)

826 Thibault, C., Levasseur, M.C., 1988. Ovulation. *Hum Reprod.* 3(4):513-23.  
827 <https://doi.org/10.1093/oxfordjournals.humrep.a136737>

828 Tripathi, V., Krishna, A., 2008. Changes in nitric oxide (NO) synthase isoforms and NO in the ovary of  
829 *Heteropneustes fossilis* (Bloch.) during the reproductive cycle. *J. Endocrinol.* 199, 307–316.  
830 <https://doi.org/10.1677/JOE-07-0509>

831 Valdebenito, I.I., Gallegos, P.C., Effer, B.R., 2015. Gamete quality in fish: Evaluation parameters and  
832 determining factors. *Zygote* 23, 177–197. <https://doi.org/10.1017/S0967199413000506>

833 Wallace, R. A., & Selman, K., 1981. Cellular and dynamic aspects of oocyte growth in teleosts. *American*  
834 *zoologist*. 21(2), 325-343. <https://doi.org/10.1093/icb/21.2.325>

835 Wallace, R. A., Greeley, M. S., McPherson, R., 1992. Analytical and experimental studies on the  
836 relationship between Na<sup>+</sup>, K<sup>+</sup>, and water uptake during volume increases associated with

837 Fundulus oocyte maturation in vitro. *Journal of Comparative Physiology B*. 162(3), 241-248.  
838 <https://doi.org/10.1007/BF00357530>

839 Watanabe, W. O., & Kuo, C. M., 1986. Water and ion balance in hydrating oocytes of the grey mullet,  
840 *Mugil cephalus* (L.), during hormone-induced final maturation. *Journal of fish biology*. 28(4), 425-  
841 437. <https://doi.org/10.1111/j.1095-8649.1986.tb05180.x>

842 White, J.M., 2003. ADAMs : modulators of cell – cell and cell – matrix interactions. *Current opinion in*  
843 *cell biology*. 15(5), 598-606. <https://doi.org/10.1016/j.ceb.2003.08.001>

844 Yamashita M, Mita K, Yoshida N, Kondo T., 2000. Molecular mechanisms of the initiation of oocyte  
845 maturation: general and species-specific aspects. *Prog Cell Cycle Res*. 4:115-29.  
846 [https://doi.org/10.1007/978-1-4615-4253-7\\_11](https://doi.org/10.1007/978-1-4615-4253-7_11)

847

Figure 1

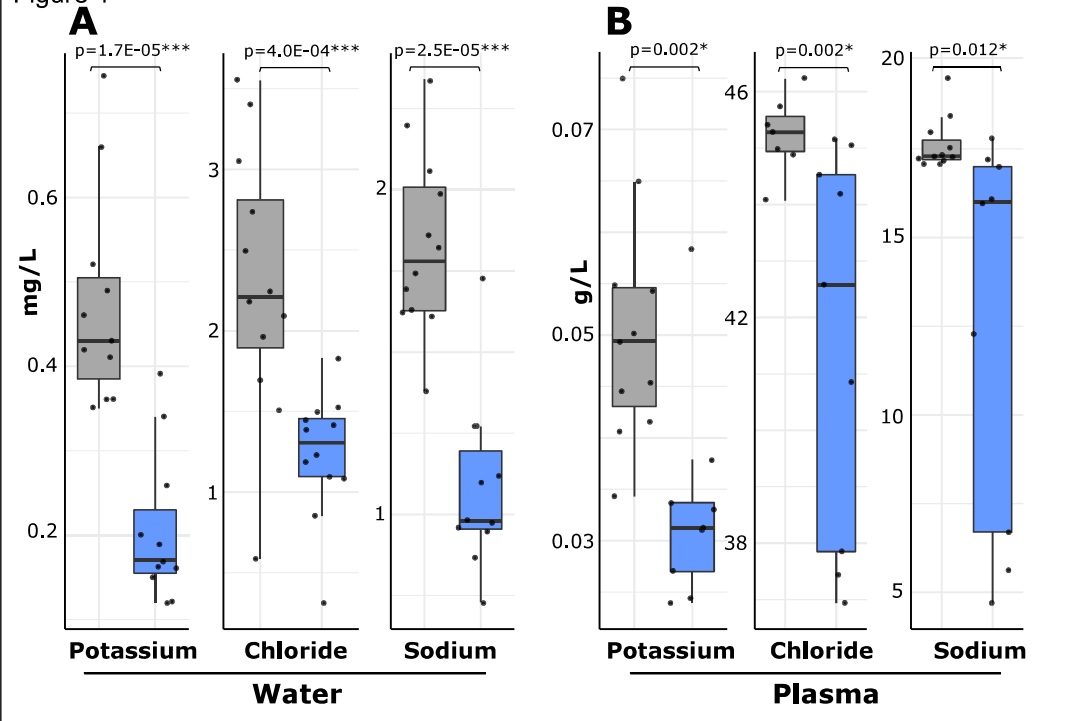


Figure 2

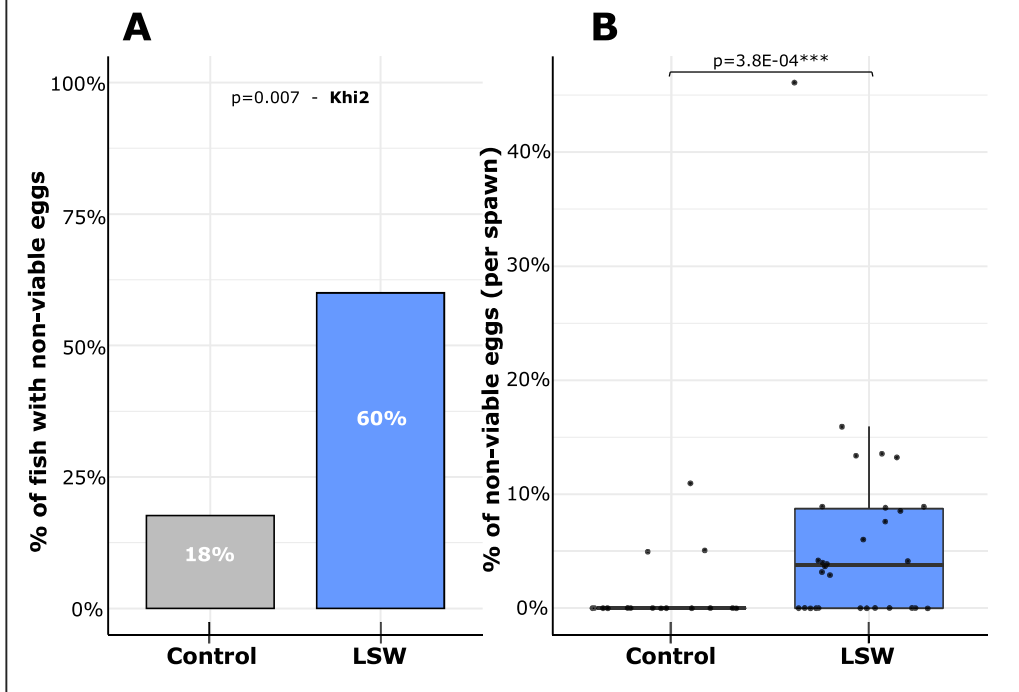
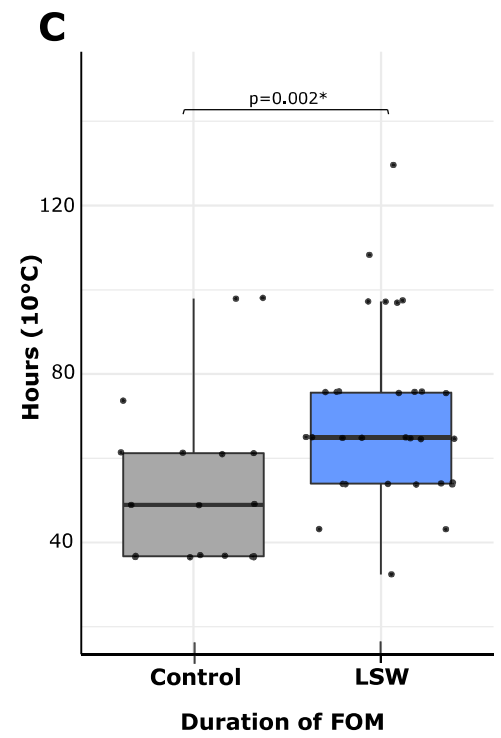
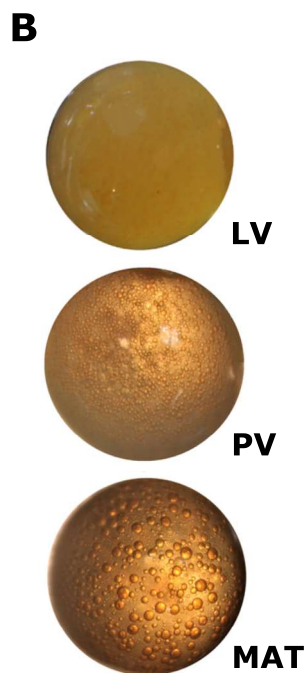
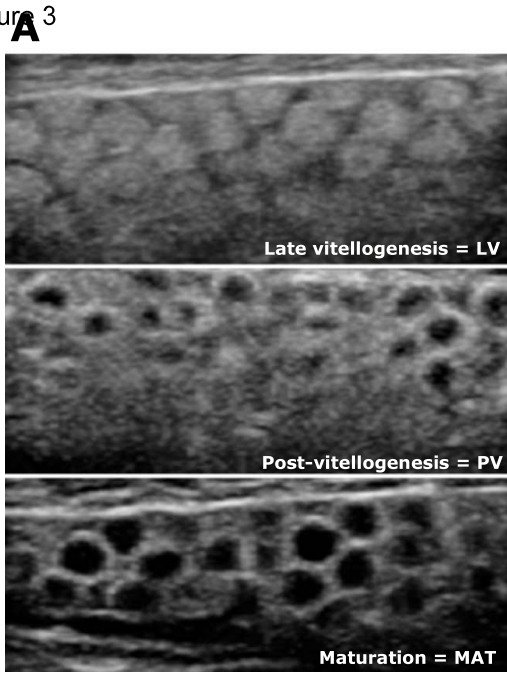
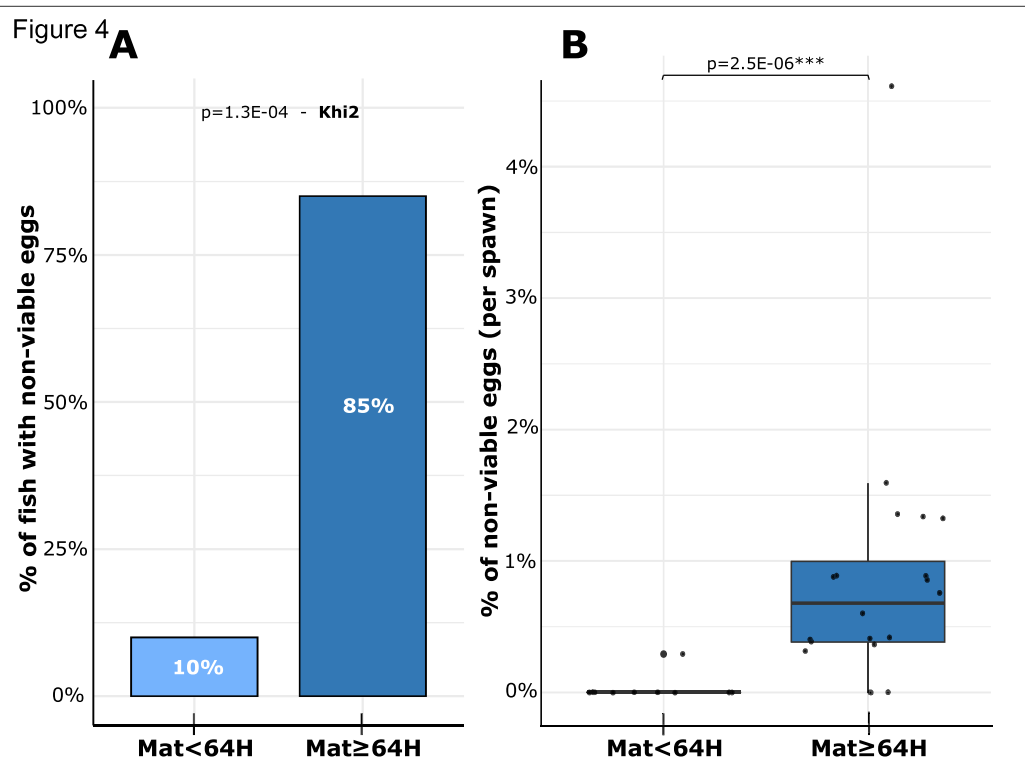




Figure 3





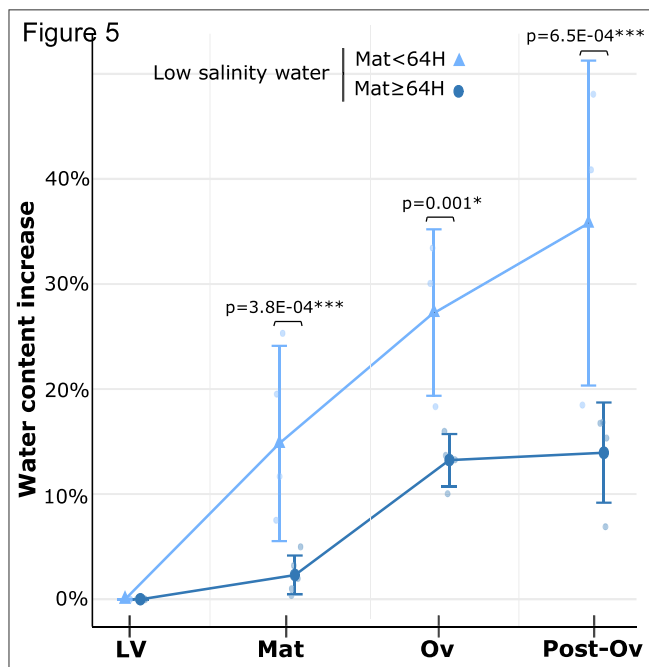
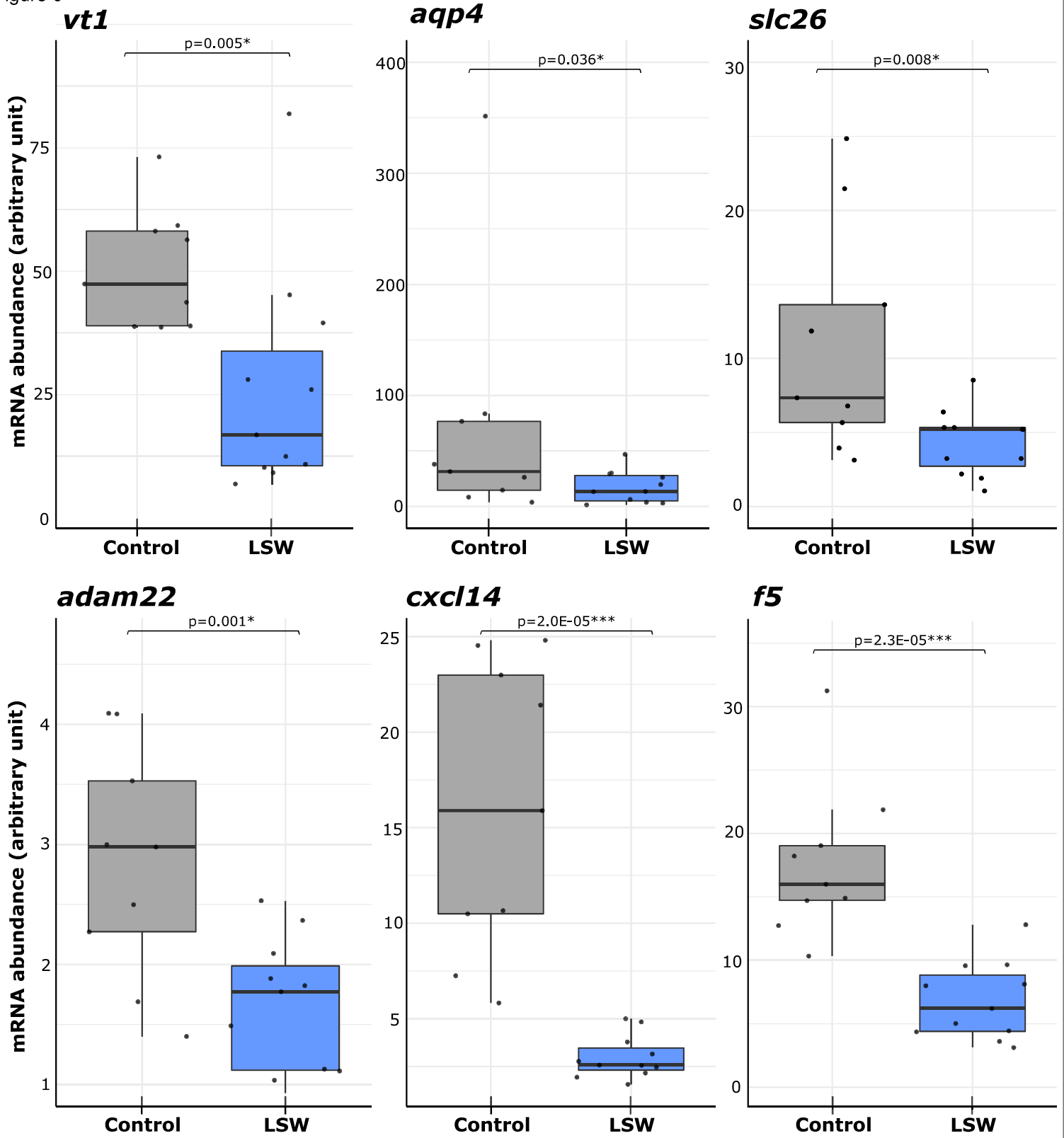


Figure 6



**Declaration of interests**

The authors declare that they have no known competing financial interests or personal relationships that could have appeared to influence the work reported in this paper.

The authors declare the following financial interests/personal relationships which may be considered as potential competing interests:

## Authors statement

**Emilien Segret:** Conceptualization, formal analysis, investigation, data curation, writing – original draft.

**Emilie Cardona:** Investigation, formal analysis.

**Sandrine Skiba-Cassy:** Conceptualization, supervision, project administration

**Frederic Cachelou:** Conceptualization, supervision, project administration, funding acquisition.

**Julien Bobe:** Conceptualization, methodology, validation, visualization, writing – review and editing, supervision, funding acquisition.