



**HAL**  
open science

## First historical genome of a crop bacterial pathogen from herbarium specimen: Insights into citrus canker emergence

Paola E Campos, Clara Groot Crego, Karine Boyer, Myriam Gaudoul, Claudia Baider, Damien Richard, Olivier Pruvost, Philippe Roumagnac, Boris Szurek, Nathalie Becker, et al.

### ► To cite this version:

Paola E Campos, Clara Groot Crego, Karine Boyer, Myriam Gaudoul, Claudia Baider, et al.. First historical genome of a crop bacterial pathogen from herbarium specimen: Insights into citrus canker emergence. *PLoS Pathogens*, 2021, 17 (7), pp.e1009714. 10.1371/journal.ppat.1009714 . hal-03327718

HAL Id: hal-03327718

<https://hal.inrae.fr/hal-03327718v1>

Submitted on 27 Aug 2021

**HAL** is a multi-disciplinary open access archive for the deposit and dissemination of scientific research documents, whether they are published or not. The documents may come from teaching and research institutions in France or abroad, or from public or private research centers.

L'archive ouverte pluridisciplinaire **HAL**, est destinée au dépôt et à la diffusion de documents scientifiques de niveau recherche, publiés ou non, émanant des établissements d'enseignement et de recherche français ou étrangers, des laboratoires publics ou privés.



Distributed under a Creative Commons Attribution 4.0 International License

RESEARCH ARTICLE

# First historical genome of a crop bacterial pathogen from herbarium specimen: Insights into citrus canker emergence

Paola E. Campos<sup>1,2</sup>, Clara Groot Crego<sup>1</sup>, Karine Boyer<sup>1</sup>, Myriam Gaudeul<sup>2,3</sup>, Claudia Baider<sup>1,4</sup>, Damien Richard<sup>1</sup>, Olivier Pruvost<sup>1</sup>, Philippe Roumagnac<sup>5,6</sup>, Boris Szurek<sup>5</sup>, Nathalie Becker<sup>2</sup>, Lionel Gagnevin<sup>5,6</sup>, Adrien Rieux<sup>1</sup>\*

**1** CIRAD, UMR PVBMT, Saint-Pierre, La Réunion, France, **2** Institut de Systématique, Évolution, Biodiversité (ISYEB), Muséum national d'Histoire naturelle, CNRS, SU, EPHE, UA, Paris, France, **3** Herbarier national (P), Muséum national d'Histoire naturelle, Paris, France, **4** Ministry of Agro Industry and Food Security, Mauritius Herbarium, R.E. Vaughan Building (MSIRI compound), Agricultural Services, Réduit, Mauritius, **5** PHIM Plant Health Institute, Univ Montpellier, CIRAD, INRAE, Institut Agro, IRD, Montpellier, France, **6** CIRAD, UMR PHIM, Montpellier, France

\* These authors contributed equally to this work.

\* [adrien.rioux@cirad.fr](mailto:adrien.rioux@cirad.fr)



**OPEN ACCESS**

**Citation:** Campos PE, Groot Crego C, Boyer K, Gaudeul M, Baider C, Richard D, et al. (2021) First historical genome of a crop bacterial pathogen from herbarium specimen: Insights into citrus canker emergence. *PLoS Pathog* 17(7): e1009714. <https://doi.org/10.1371/journal.ppat.1009714>

**Editor:** David Mackey, The Ohio State University, UNITED STATES

**Received:** November 2, 2020

**Accepted:** June 14, 2021

**Published:** July 29, 2021

**Peer Review History:** PLOS recognizes the benefits of transparency in the peer review process; therefore, we enable the publication of all of the content of peer review and author responses alongside final, published articles. The editorial history of this article is available here: <https://doi.org/10.1371/journal.ppat.1009714>

**Copyright:** © 2021 Campos et al. This is an open access article distributed under the terms of the [Creative Commons Attribution License](https://creativecommons.org/licenses/by/4.0/), which permits unrestricted use, distribution, and reproduction in any medium, provided the original author and source are credited.

**Data Availability Statement:** The authors confirm that all data underlying the findings are fully available without restriction. HERB\_1937 raw reads were deposited to the Sequence Read Archive

## Abstract

Over the past decade, ancient genomics has been used in the study of various pathogens. In this context, herbarium specimens provide a precious source of dated and preserved DNA material, enabling a better understanding of plant disease emergences and pathogen evolutionary history. We report here the first historical genome of a crop bacterial pathogen, *Xanthomonas citri* pv. *citri* (*Xci*), obtained from an infected herbarium specimen dating back to 1937. Comparing the 1937 genome within a large set of modern genomes, we reconstructed their phylogenetic relationships and estimated evolutionary parameters using Bayesian tip-calibration inferences. The arrival of *Xci* in the South West Indian Ocean islands was dated to the 19<sup>th</sup> century, probably linked to human migrations following slavery abolishment. We also assessed the metagenomic community of the herbarium specimen, showed its authenticity using DNA damage patterns, and investigated its genomic features including functional SNPs and gene content, with a focus on virulence factors.

## Author summary

Herbarium collections are a precious resource to plant pathologists, tracking crop diseases on specimens collected in the past centuries. In addition to indicating the presence of a disease at a specific time and locality, recent molecular technologies now allow extraction and microbial DNA sequencing from dead specimens. Despite challenges due to the degraded nature of DNA retrieved from historical samples, we were able to reconstruct the genome of a pathogenic bacterium from a 1937 herbarium specimen collected in Mauritius: *Xanthomonas citri* pv. *citri*, responsible for Asiatic citrus canker (ACC, an economically important agricultural disease controlled mostly through prophylactic and quarantine measures). Enhanced knowledge about the epidemiology and evolution of this

(SRR12792042). Consensus historical genome reconstructed for chromosome, plasmids pXAC33 and pXAC64 have also been deposited on GenBank database (CP072205-CP072207). The modern genomes used in this study have previously been published in the NCBI GenBank repository under accession numbers listed in S1 Table. Accession numbers of any previously published data used in this study are listed in [Supplementary information](#).

**Funding:** This work was financially supported by l'Agence Nationale pour la Recherche (AR: JCJC MUSEOBACT contrat ANR-17-CE35-0009-01; <https://anr.fr/>), the European Regional Development Fund (AR, KB, OP, NB: ERDF contract GURDT I2016-1731-0006632; <https://www.europe-en-france.gouv.fr/fr/fonds-europeens/fonds-europeen-de-developpement-regional-FEDER>), Région Réunion (AR, KB, OP, NB; <https://www.regionreunion.com/>), the French Agropolis Foundation Labex Agro—Montpellier (AR, OP, PR, BS, NB, LG: E-SPACE project number 1504-004) & (AR, PR, BS, LG: MUSEOVIR project number 1600-004; <https://www.agropolis-fondation.fr/?lang=en>), the SYNTHESYS Project (LG: grant GB-TAF-6437 & AR: grant GB-TAF-7130; <http://www.synthesys.info/>), the COST Action (LG, BS: grant CA16107 EuroXanth supported by COST; <https://www.cost.eu/>) & CIRAD/AI-CRESI (AR, PR, BS, LG : grant 3/2016; <https://www.cirad.fr/en/home-page>). PhD of PC. was co-funded by ED 227, Muséum national d'Histoire naturelle et Sorbonne Université, French Ministry of Higher Education, Research and Innovation, France. The funders had no role in study design, data collection and analysis, decision to publish, or preparation of the manuscript.

**Competing interests:** The authors have declared that no competing interests exist.

bacterial pathogen is valuable to improve these measures. We compared the genome of this 1937 bacterial strain to a collection of modern strains, included it in a tree representing their genetic relationships, and calculated both evolutionary mutation rate and divergence times. This “forensic investigation” informs us about how and when the disease developed in the South West Indian Ocean Islands. We hypothesize that there was a single (or a few related) introduction of ACC in Mauritius in the mid-19th century, followed by expansion to the neighbouring islands.

## Introduction

Since the origins of agriculture, humanity has struggled with the incessant, devastating impact of plant diseases on food production [1]. As illustrated by the 19<sup>th</sup> century potato late blight epidemic caused by the oomycete *Phytophthora infestans* [2], crop pathogens have been responsible for tremendous losses, resulting in starvation for millions of human beings and massive migrations. Today, up to 40% of yield losses among major cultivated crops are associated with plant pathogens and pests with major economic impact [3]. Simultaneously, more than 800 million people remain chronically undernourished worldwide [4]. It is also widely acknowledged that the extensive use of pesticides against crop pathogens is detrimental to the environment, affects public health and threatens biodiversity [5].

In order to most effectively manage current infectious crop diseases and prevent future epidemics, a better understanding of the factors underlying pathogen emergence, adaptation and spread is necessary [1,6]. As sequencing technologies have become more accessible, genetic analyses have played an increasingly important role in infectious disease research. Whole genome sequencing of pathogens can confirm suspected cases of an infectious disease, discriminate between different strains, classify novel pathogens and reveal virulence mechanisms in a time- and cost-efficient manner [7,8]. In addition to examining individual pathogen sequences, multiple sequences can be combined within phylogenetic methods to assess population structure, elucidate evolutionary/transmission history and infer several demographic, evolutionary or epidemiological parameters [9,10]. Until recently, most studies were performed on field-sampled contemporary individuals over a time interval of maximum four decades. Although such studies grant a good understanding of the population structure and recent emergences of pathogens, such small temporal differences between samples do neither allow a thorough detection of measurable amounts of evolutionary changes, nor a reconstruction of deeper evolutionary timelines [11], leaving many questions on crop pathogen emergence unanswered. With the first studies on ancient DNA (hereafter aDNA) obtained from historical or ancient samples such as archaeological tissue remains or museum specimens [12], it became possible to explore the past from a genetic perspective.

The few studies performed on crop pathogens from herbarium specimens worldwide have emphasized the role of historical collections for understanding the evolution and epidemiology of plant pathogens [13–17]. First, the observation of disease symptoms associated with herbarium specimen information (collection date, geographic location, host species or other phenotypic traits) may allow a direct update of past disease occurrence, distribution and host range. For instance, Antonovics *et al.* [18] made use of infected *Silene* sp. historical specimens to survey the incidence of anther smut disease and showed a possible change of host range of this disease in the Eastern USA. Second, recent molecular developments have allowed a more efficient retrieval and sequencing of low quantity, short and degraded nucleic acids from historical desiccated plant tissues [19]. Historical and modern genomes can then be compared to detect changes in genetic contents and arrangement over time, such as the loss or gain of

functional genes or the change of ploidy levels, for both pathogens and their host plants [20]. Moreover, by expanding the temporal range between samples, the chance of detecting evolutionary changes, *i.e.* temporal signal, increases [21]. Compared to their most recent common ancestor, modern genomes are expected to have accumulated more mutations than their historical counterparts. These differences can be used to directly infer mutation rates, divergence time between lineages and sudden changes in genetic diversity [14,22], which can be correlated with historical and socioeconomic events. Such analyses performed on historical DNA sequences of *P. infestans* retrieved from 19<sup>th</sup> century herbarium specimens resolved the debated origin and identity of the strain that caused the 1840s late blight pandemic [14,17,23–25]. Although reconstructions of crop pathogen history using full genomic sequences have been successfully realized on historical oomycetes [14,23] and viruses [26–28], such an achievement has not yet been reported for a bacterial crop pathogen, for which only few genetic markers were previously exploited [29].

In this work, we focus on *Xanthomonas citri* pv. *citri* (*Xci*), the bacterium responsible for the Asiatic citrus canker (ACC) [29,30]. ACC causes important economic losses in most citrus-producing areas worldwide, both by decreasing fruit yield and quality, but also by limiting exportations due to its quarantine status [31]. The earliest records of ACC, dating back to 1812–1844, are in herbarium specimens from Indonesia and India [32], suggesting an Asiatic origin of *Xci* [33–35]. From there, although without direct evidence, *Xci* would have spread through multiple dispersal events over time, leading to its current broad distribution across continents and islands. In this context, a comparison of *Xci* multilocus genotypes retrieved from herbarium specimens suggested Japan as being the source of the 1911 ACC original outbreak in Florida [29]. Aiming for a refined chronology of these spreading events within the South West Indian Ocean (SWIO) area, where *Xci* diversity is well-documented [35–38], we focused on SWIO herbarium specimens.

We report the first genome of a historical bacterial pathogen retrieved from a citrus herbarium specimen collected in 1937 in Mauritius, 20 years after the first report of ACC on this island [39]. We studied the metagenomic composition of this herbarium sample and showed its authenticity as aDNA material by assessing damage patterns. Using tip-calibrated phylogenetic inferences performed with both the 1937 historical strain and a large set of modern genomes, we elucidated the emergence history of *Xci* in the SWIO islands and further analyzed its genomic characteristics, with a particular focus on virulence factors.

## Results

### Laboratory procedures & high-throughput sequencing

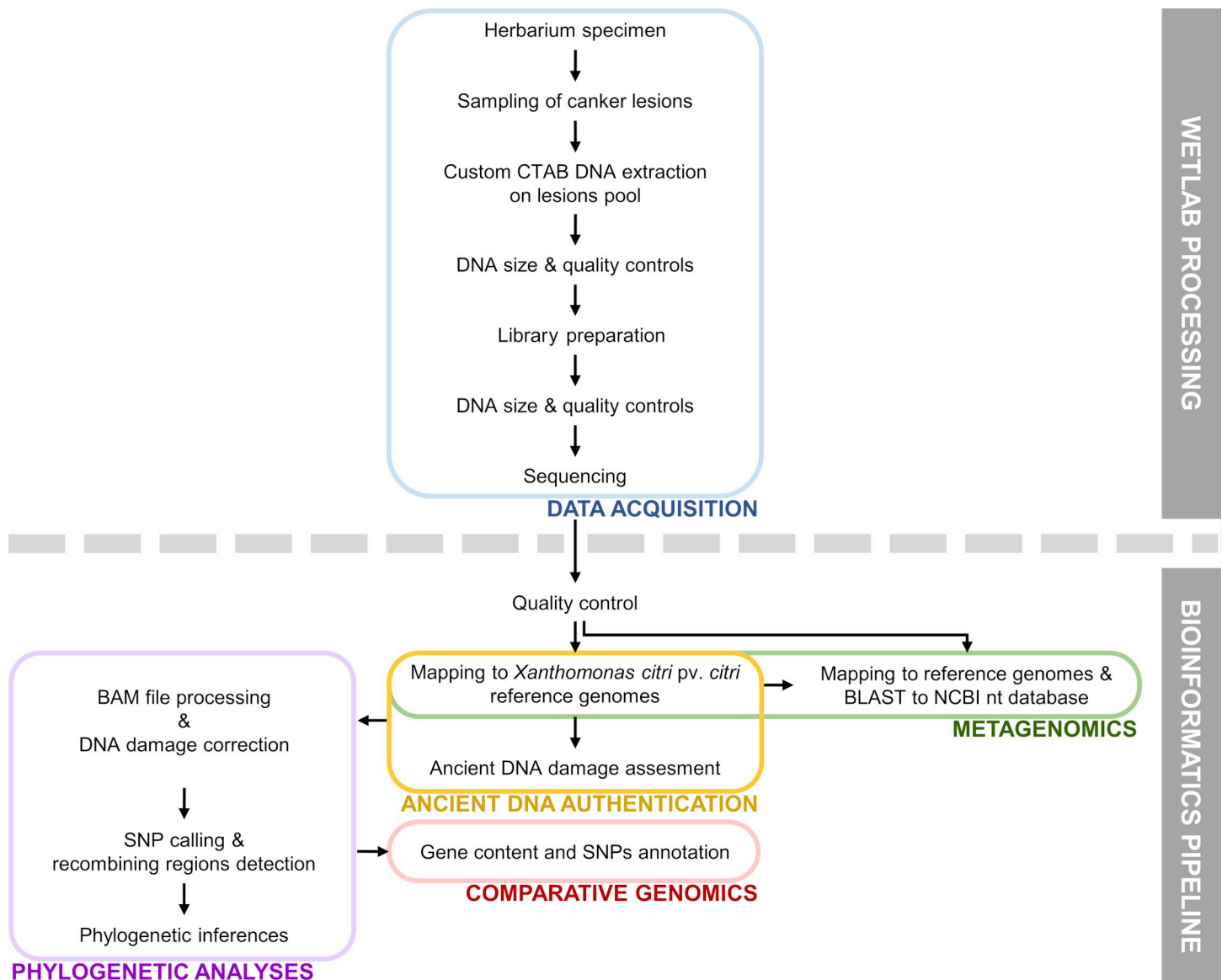
Herbarium specimen MAU 0015151 *Citrus* sp. from 1937, Mauritius (hereafter HERB\_1937, Fig 1) was sampled from the Mauritius Herbarium collections (<https://herbaria.plants.ox.ac.uk/bol/mau>) and chosen for this study as the most ancient symptomatic herbarium specimen available from the SWIO area. It precedes the oldest culture available from this island by ~50 years. DNA was carefully extracted in a bleach-cleaned facility with no prior exposure to modern *Xci* DNA using an optimized protocol (see [Material & Methods](#)). Extracted DNA (yield of 0.75 ng per mg of leaf tissue) was shown with a specific and exclusive qPCR diagnostic assay [40] to contain *Xci* DNA, roughly equivalent to  $3 \times 10^5$  CFU/cm<sup>2</sup> (average C<sub>T</sub> of 32.0, C<sub>T</sub> cut-off = 35.4 and no-C<sub>T</sub> value for the negative control). Total DNA was then converted into an Illumina library, and sequencing generated 220.9 M paired-end reads with a base call accuracy of 99.90 to 99.96%. Following adaptor trimming and quality checking, insert reads were  $59 \pm 24$  nt long and underwent four main analyses: metagenomic inference, ancient DNA authentication, comparative genomics and phylogenetic analyses, as summarized in Fig 2.





**Fig 1.** *Citrus* sp. specimen MAU 0015151 (HERB\_1937), Mauritius Herbarium. MAU 0015151 *Citrus* sp. specimen (HERB\_1937) was collected from Mauritius in 1937 and deposited in the Mauritius Herbarium. Leaf areas displaying typical symptoms of Asiatic citrus canker are highlighted with blue dotted frames.

<https://doi.org/10.1371/journal.ppat.1009714.g001>



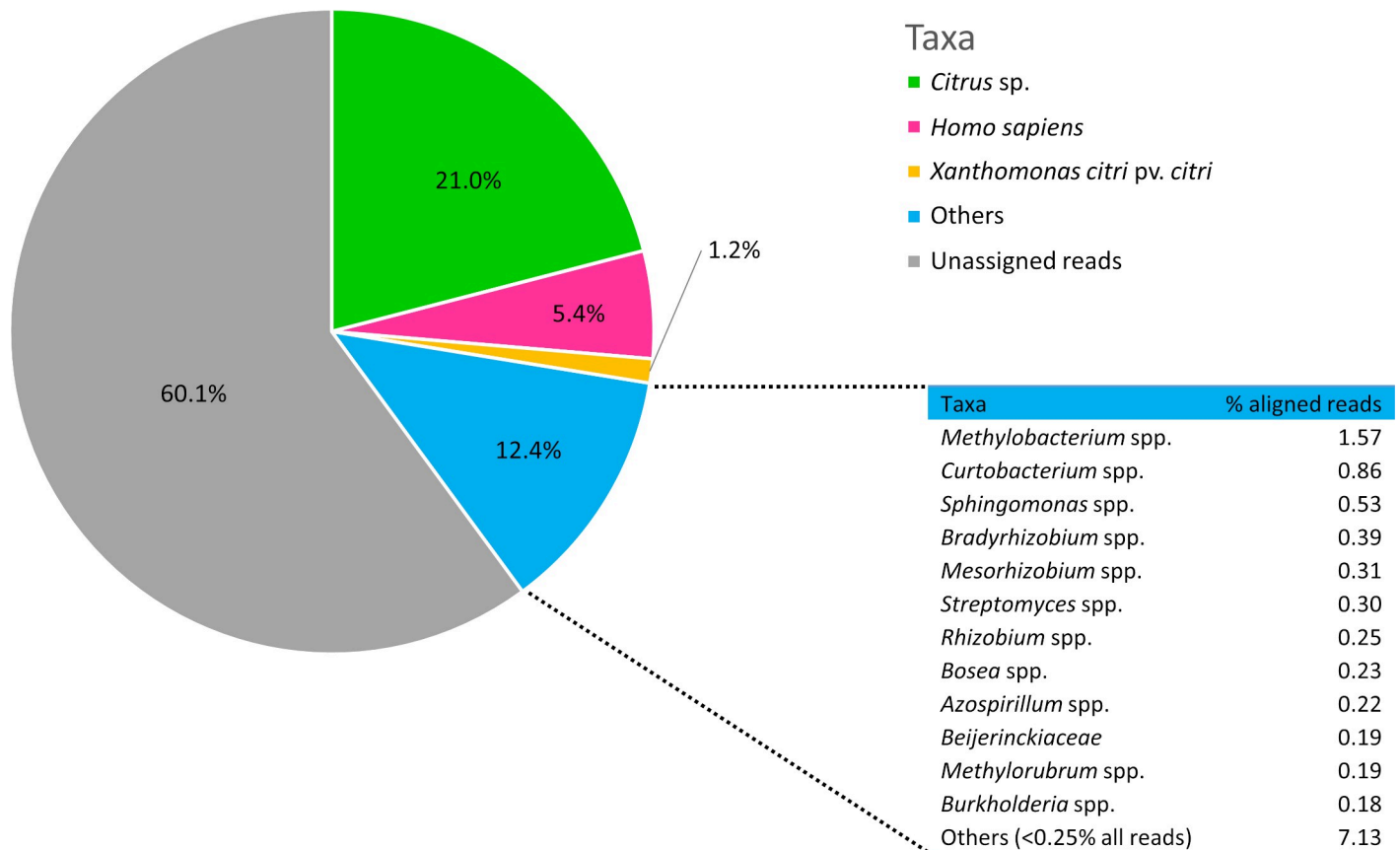
**Fig 2. Major steps performed for characterization and integration of our herbarium sample into genomic analyzes.** See [Material & Methods](#) for more details on the workflow processed for HERB\_1937 in this study. Abbreviations: CTAB, cetyl trimethylammonium bromide; DNA, deoxyribonucleic acid; BAM file, binary alignment map file; BLAST, basic local alignment search tool; NCBI nt database: national center for biotechnology information nucleotide database; SNP, single-nucleotide polymorphism.

<https://doi.org/10.1371/journal.ppat.1009714.g002>

Importantly, no *Citrus* nor *Xci*-specific DNA fragments were found in our negative control, thus ruling out in-lab contamination.

### Metagenomic composition

DNA extracted from leaf lesions is expected to originate from different sources. Using a combination of mapping- and BLAST-based approaches (as detailed in [Material & Methods](#) section), we studied the metagenomic composition of the reads obtained from HERB\_1937. Identified sequences mostly consisted of the *Citrus* plant host genus (21.0%), followed by, at the species level, *Homo sapiens* (5.4%), and *Xci* found in 1.2% of the reads ([Fig 3](#)). Other reads were



**Fig 3. Metagenomic composition of HERB\_1937 historical specimen.** Proportions of reads assigned to *Homo sapiens* (5.4%), *Citrus* sp. (21.0%), *Xci* (1.2%). Others (12.4%): reads unassigned at the species level; unassigned reads (60.1%). Table: reads unassigned at the species level were assigned to the family (for *Beijerinckiaceae*) or genus level (for all others) and belong, for 0.18% to 1.57% of the aligned reads to the domain bacteria; “Others (<0.25% all reads)” include reads assigned to different plant, fungi, vertebrate, bacteria and phage genera (each identified genus totalizing less than 0.25% of all reads).

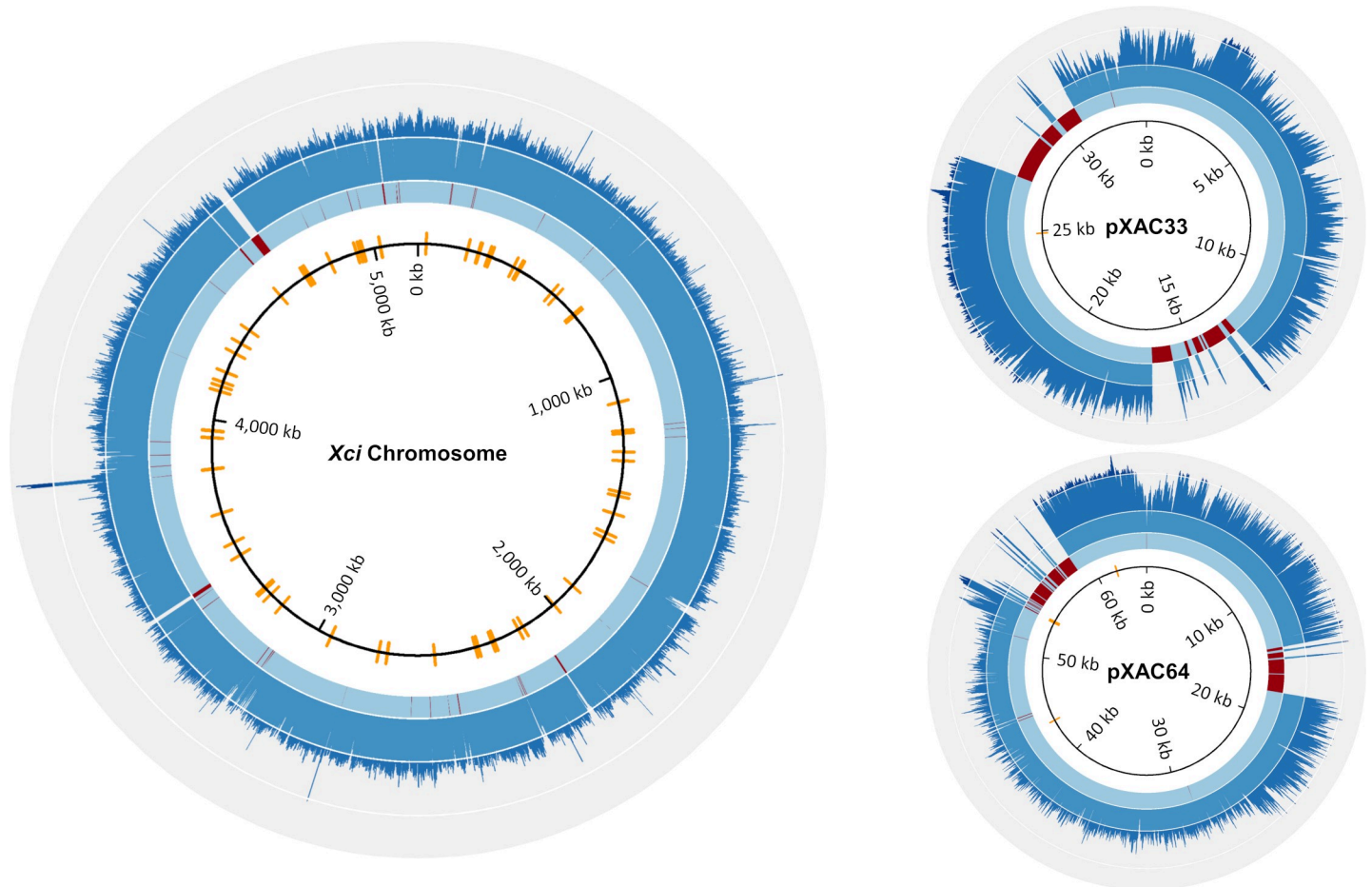
<https://doi.org/10.1371/journal.ppat.1009714.g003>

assigned to higher taxonomic levels, corresponding to one bacterial family and eleven different genera (from 0.18% (*Burkholderia*) to 1.57% (*Methylobacterium*) of aligned reads). Plant, fungi, vertebrate, bacteria and phage genera were marginally found (less than 0.25% of aligned reads for each genera). Altogether, reads unassigned to the species level added up to 12.4% of the reads. More than half (60.1%) of the reads were not assigned to any known taxa (Fig 3).

### Historical genome reconstruction & characterization

A high quality *Xci* genome was reconstructed from HERB\_1937 (hereafter called HERB\_1937\_*Xci*) by mapping the reads (discarding the 5 terminal nucleotides) to *Xci* IAPAR 306 reference sequences [41]. 0.74% (N = 1,628,776) of the total number of reads mapped to the *Xci* reference genome, a value unsurprisingly smaller than the 1.2% found with the “metagenomic pipeline” which combined both mapping and BLAST-n approaches. The reference chromosome was covered by a depth (the number of mapped reads at a given position) of at least 1X for 94% of its sequence, and displayed a mean depth of ~6X. Both pXAC33 and pXAC64 plasmids displayed a higher mean depth and larger non-covered regions (Fig 4 and Table 1). As non-covered positions can be caused by the absence of genes in the historical strain compared to the modern reference, but also by reads mapping ambiguously to multiple positions (repeated regions or replicated genes), we further characterized these loci (see gene content & virulence factors section).





**Fig 4. Coverage plots for the reconstructed HERB\_1937\_Xci chromosome and plasmids (pXAC33, pXAC64) sequences.** From inside to outside, a light to dark blue scale (delimited by a white line) represents 1, 1–5, 5–15, 15–35-fold coverage (*Xci* chromosome) and 1, 1–5, 5–35, 35–90-fold coverage (plasmids). Red rings indicate no identified coverage (depth = 0). SNP positions between the respective reconstructed and reference sequences are indicated (orange line). Accession numbers for *Xci* reference strain IAPAR 306: NC\_003919.1 (chromosome), NC\_003921.3 (plasmid pXAC33) and NC\_003922.1 (plasmid pXAC64).

<https://doi.org/10.1371/journal.ppat.1009714.g004>

**Table 1. Summary of mapping, depth coverage and damage statistics for the reconstructed HERB\_1937\_Xci genome.** Mapping, depth, coverage and damage statistics (read length, purine enrichment and deamination rate) are indicated for HERB\_1937\_Xci chromosome and plasmids (pXAC33, pXAC64). nt: nucleotides, SD: standard deviation.

Genome	Endogenous <i>Xci</i> DNA (%)*	Mean depth**	Coverage (%)***				Read length (nt)		Purine frequency enrichment at position -1		Deamination rate at terminal position (%)	
			0X	1X	5X	10X	Mean	SD	Mean	SD	5'C/T	3'G/A
Chromosome	0.71	5.9	5.8	94.2	53.0	7.0	42.75	12.64	1.79	0.00	2.25	2.35
pXAC33	0.01	21.9	17.4	82.6	80.2	75.1	45.43	14.21	1.76	0.05	2.91	2.96
pXAC64	0.02	17.3	11.5	88.5	82.3	63.6	45.20	13.85	1.77	0.01	2.65	2.73
Mean							44.46	13.57	1.77	0.03	2.60	2.68

\* Reads mapping to *Xci* reference genome/total reads before duplicate removal, expressed in %.

\*\* Average number of mapped reads at each base of the reference genome.

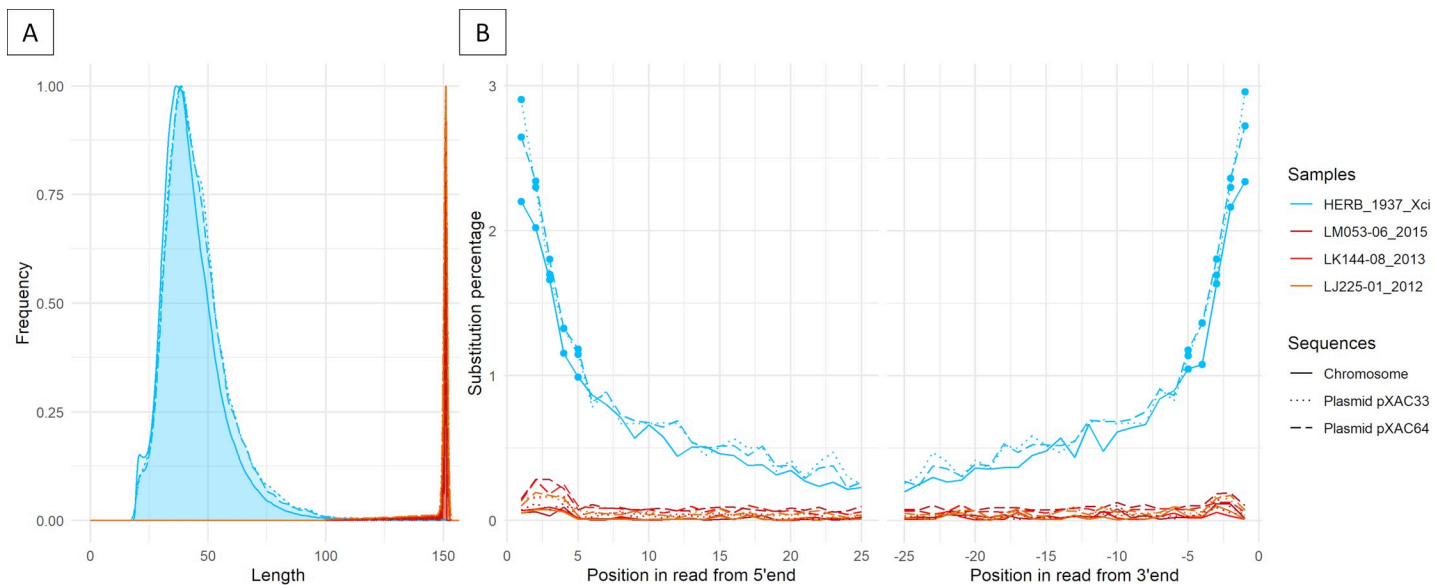
\*\*\* Percentage of reference genome covered at nX depth.

<https://doi.org/10.1371/journal.ppat.1009714.t001>



## Ancient DNA damage assessment

Ancient DNA is typically degraded, presenting short fragments, excess of purine bases before DNA breaking points and cytosine deamination at fragment extremities [12,42]. We searched for such patterns of degradation in HERB\_1937\_Xci using the dedicated tool mapDamage2 [43]. The mean read length of HERB\_1937\_Xci reads was  $44.5 \pm 13.5$  nt, showing substantial fragmentation (Fig 5A). DNA fragmentation being partially caused by depurination, we also examined the nucleotidic context surrounding 5' end DNA breakpoints. We found a mean relative purine enrichment of  $1.77 \pm 0.03$  between upstream positions -1 and -5 of HERB\_1937\_Xci reads (Table 1). Modern strains, fragmented by enzymatic digestion prior to library construction, displayed no such enrichment ( $0.87 \pm 0.01$ ). Cytosine deamination was investigated by monitoring 5'C/T substitutions *versus* complementary 3'G/A substitutions, a classical analysis for double-stranded, blunt-ended libraries constructed prior to sequencing. Mean deamination rates of HERB\_1937\_Xci reads reached maximal values at the terminal nucleotide ( $2.64 \pm 0.29\%$ , Table 1 and Fig 5B). For statistical analyses, we took into account the five successive extreme positions of the reads, harbouring a significant increase between each nucleotide (outwards) along the five first or last positions of the reads (Wilcoxon matched-pairs signed rank test, 2-tailed p-value = 0.0313). The maximal rate among reads of three modern *Xci* controls displayed a significantly lower value of  $0.10 \pm 0.07\%$  ( $p < 0.0001$ , unpaired 2-tailed Mann-Whitney test, Fig 5B). The apparent lower deamination rate for HERB\_1937\_Xci chromosome reads, as compared to both plasmids (Table 1), was analyzed similarly, along the five first or last positions of the reads. Interestingly, we found a significantly lower deamination rate for HERB\_1937\_Xci chromosome reads (1.6%) as compared to both plasmids (1.9%) (Wilcoxon matched-pairs signed rank test, 2-tailed p-value = 0.002). In



**Fig 5. HERB\_1937\_Xci post-mortem DNA damage patterns.** Post-mortem DNA damage patterns were measured on historical HERB\_1937\_Xci (full, dotted or dashed blue lines for chromosome, pXAC33 and pXAC64 respectively) and compared with three modern *Xci* strains isolated from SWIO in 2012, 2013 and 2015 respectively (red lines, see results and S1 Table for full description). (A) Fragment length distribution (nucleotides; relative frequency in arbitrary units). (B) Deamination percentages of the first 25 nucleotides from the 5' (C to T substitutions) and 3' (G to A substitutions) ends, respectively. Dots: five most extreme nucleotides of the reads, showing a significant increase (towards the extremity) between each nucleotide along the five first or last positions of all HERB\_1937\_Xci reads. Along the five extreme nucleotides, reads matching to HERB\_1937\_Xci harboured significantly higher values than modern controls, and reads matching to the HERB\_1937\_Xci chromosome harboured significantly lower deamination rates than sequences matching to either plasmid (see results for statistics).

<https://doi.org/10.1371/journal.ppat.1009714.g005>

contrast, we observed similar fragment lengths for chromosome and plasmid reads (Table 1 and Fig 5).

We performed the same analyses using the *Methylobacterium* reference genome (*M. organophilum*, strain DSM 760), since 1.57% of the reads unassigned at the species level were attributed to this particular genus (Fig 3). Mean read length was estimated at  $66 \pm 25$  nt, relative enrichment of purine frequency reached  $1.80 \pm 0.52$  (as previously, between position -1 and -5), and deamination rates at the terminal nucleotides averaged  $2.18 \pm 0.07\%$ .

### Gene content & virulence factors

Out of 5,125 coding sequences (CDS) of strain IAPAR 306, only 139 were covered on less than 75% of their length by HERB\_1937\_Xci reads and will hereafter be designed as non-covered (S2 Table). Ninety-five of those CDS are present in multiple copies in IAPAR 306 with a strong nucleotide identity, leading to ambiguous mapping and poor coverage and can be considered as false absences. Among those 95 CDS, 77 are predicted to encode for full-length, or fragments of transposases. Four correspond to highly identical copies of Transcription Activator-Like Effector (TALE) genes (see specific paragraph below). The remaining multi-copy genes code for the elongation factor Tu, a xylose isomerase, a filamentous haemagglutinin and seven hypothetical proteins. Forty-four IAPAR 306 CDS were non-covered because no homologous reads were present in our dataset. Most of them hypothetically code for proteins of unknown function, with the exception of an identified type I restriction-modification system (including DNA methylase, endonuclease and specificity determinant), and six recombinases or integrases. Interestingly, 28 successive non-covered CDS correspond to a 27-kb block present only in IAPAR 306 and a few of its close relatives, which contains six transposases, three recombinases and 19 proteins of unknown function.

We verified the presence or absence of specific genes whose products have proven or are hypothetically involved in the pathogenicity of *Xanthomonas*. In particular, the type III secretion system (T3SS) is a syringe-like apparatus which injects “effectors” directly into the plant cell to inhibit plant defences and contribute to symptom development [44]. For this we investigated the presence in HERB\_1937\_Xci of a group of 82 genes found in *Xci* or other *Xanthomonas* species [45], encoding either for the T3SS or for type III effectors (T3E, which may participate in pathogenicity) [46]. Reads from HERB\_1937\_Xci covered 57 of those CDS on more than 94% of their sequence (S3 Table), including the entire set (24 CDS) of genes necessary for the T3SS and 33 potential T3E genes. The coverage of the remaining 25 CDS, all virulence factors from other *Xanthomonas* but not present in *Xci* [46] reached a maximum of 45.1% of their length (S3 Table), indicating the absence of the corresponding genes.

On the plasmids, most of the non-covered positions of HERB\_1937\_Xci were localized in four regions coding for TALE proteins (Fig 4 and S2 Table). These peculiar T3Es are responsible for the development of canker symptoms on citrus [47]; as our samples harbored such symptoms, we expected to find homologs in HERB\_1937\_Xci. *Xci* injects these TALE into the plant cell, activating the host’s transcriptional machinery to its benefit [48,49]. *Tale* genes encode for transcription activator-like proteins containing an N-terminal domain responsible for translocation from the bacterium to the plant cell, a C-terminal domain containing nuclear localization signals and a eukaryotic transcription activation domain, flanking tandem repeats of 33–34 conserved amino acids (S1 Fig). These repeats are highly homologous except for two amino-acid residues (called Repeat Variable Di-residues: RVD) responsible for DNA-binding specificity. We hypothesized that reads corresponding to *tale* genes were initially not mapped due to their particular structure and multicopy nature. Hence, we realized specific alignments using the sequences coding for either the N-terminal domain, the C-terminal domain and the

repeat domain (reduced to a three-repeat string) of *tale* gene *pthA4* as three independent references to test for the presence of *tale* sequences in HERB\_1937\_Xci. Almost 6,000 newly mapped reads corresponding to the *tale* gene were recovered (S1 Fig), with a mean depth of 44X for both 5' and 3' ends, about two times the mean depth of plasmid sequences outside *tale* gene positions (~23X). Moreover, two loci on the 5' end sequence were biallelic, presenting either T or C bases with a T/C ratio of 43/57 and 35/65, respectively. One of these loci translated into a conservative amino-acid substitution, found elsewhere in TALEs of proteic databases. Taken together, these results suggest the existence of two to four different 5' end sequences of *tale* genes, and therefore as many *tale* genes, in HERB\_1937\_Xci historical genome. Finally, among the remaining reads corresponding to the central repeat domain, we identified eight patterns of nucleotides coding for the RVD (S4 Table). Interestingly, although the most prevalent are found in modern *Xci tale* genes in similar proportions [50], three RVDs are unreported in modern TALE.

### SNPs, phylogenetic reconstruction and tip-dating at the SWIO scale

We localized the SNPs between HERB\_1937\_Xci and the IAPAR 306 reference genome (Fig 4). After filtration of dubious SNPs (i.e. eliminated because of low depth, heteroplasmy and/or proximity to another SNP), HERB\_1937\_Xci displayed 83 high-quality SNPs on its chromosome sequence, one and four in sequences corresponding to pXAC33 and pXAC64, respectively. Forty-three SNPs were non-synonymous substitutions on the chromosome reference sequence, one on pXAC33 and three on pXAC64. The SNPs found between HERB\_1937\_Xci and IAPAR 306 were not characterized any further; a more meaningful analysis was performed for SNPs identified between HERB\_1937\_Xci and its related SWIO clade.

A total of 2,634 high confidence SNPs were found within the alignment of HERB\_1937\_Xci historical chromosome with 116 modern samples from the SWIO islands. The ClonalFrameML [51] analysis identified a single 5.9 kb recombinant region including two SNPs, which were removed from further inferences. For the 2,632 recombination-free SNPs, we estimated a ratio of non-synonymous (dN) to synonymous (dS) changes of 4.16. We identified 15 SNPs unique to HERB\_1937\_Xci and restricted to chromosome sequences, among which 14 were attributed to coding sequences. Analysis of these SNPs led to the identification of three synonymous and 11 non-synonymous mutations, which were characterized at the protein level. Interestingly, seven of those reveal unique amino-acids at these positions (among similar but non-redundant proteins of the *Xanthomonas* genus identified by BLASTp), thus harboring previously unknown proteic features (S5 Table). We added an outgroup and built a Maximum-Likelihood (ML) phylogeny with RAxML [52], which placed HERB\_1937\_Xci historical sequence outside of the “modern” SWIO clade (S2 Fig). The ML tree was well-supported and structured in three lineages: a Mauritius lineage (lineage A), sister-group of the rest of the modern strains of the SWIO comprising two lineages, the first with strains from Mauritius and Reunion (lineage B), and the second with strains from all SWIO islands (lineage C) (S2 Fig).

As a requirement to perform tip-based calibration, we tested the presence of temporal signal in our tree with both a linear regression between samples ages and root-to-tip distance, and a date-randomization test [22]. Both statistical tests revealed the presence of temporal signal (i.e. progressive accumulation of substitutions over time) within the SWIO tree. The linear regression test displayed a significant positive slope (value =  $19.236 \times 10^{-5}$ , adjusted  $R^2 = 0.270$  with a p-value =  $2.07 \times 10^{-10}$ ), with HERB\_1937\_Xci showing clear evidence of branch shortening (Fig 6B). The date-randomization test of the inferred root age of the real *versus* date-randomized datasets showed no overlap (95% Highest Posterior Density, S3 Fig). Therefore, we

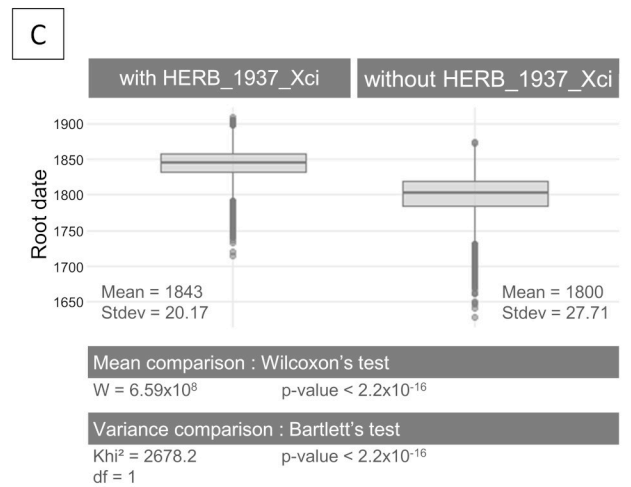
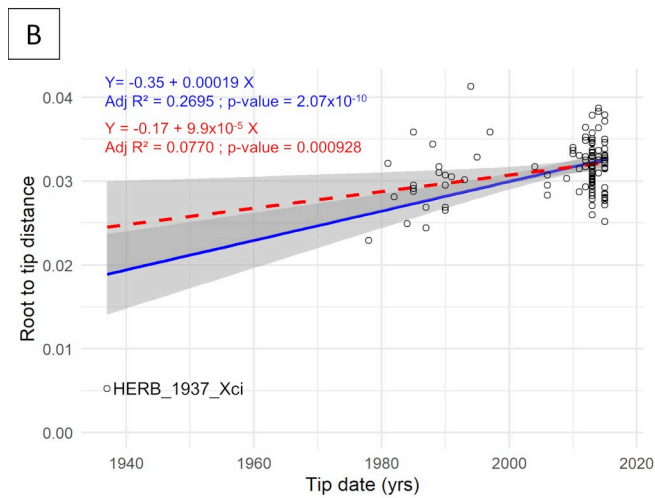
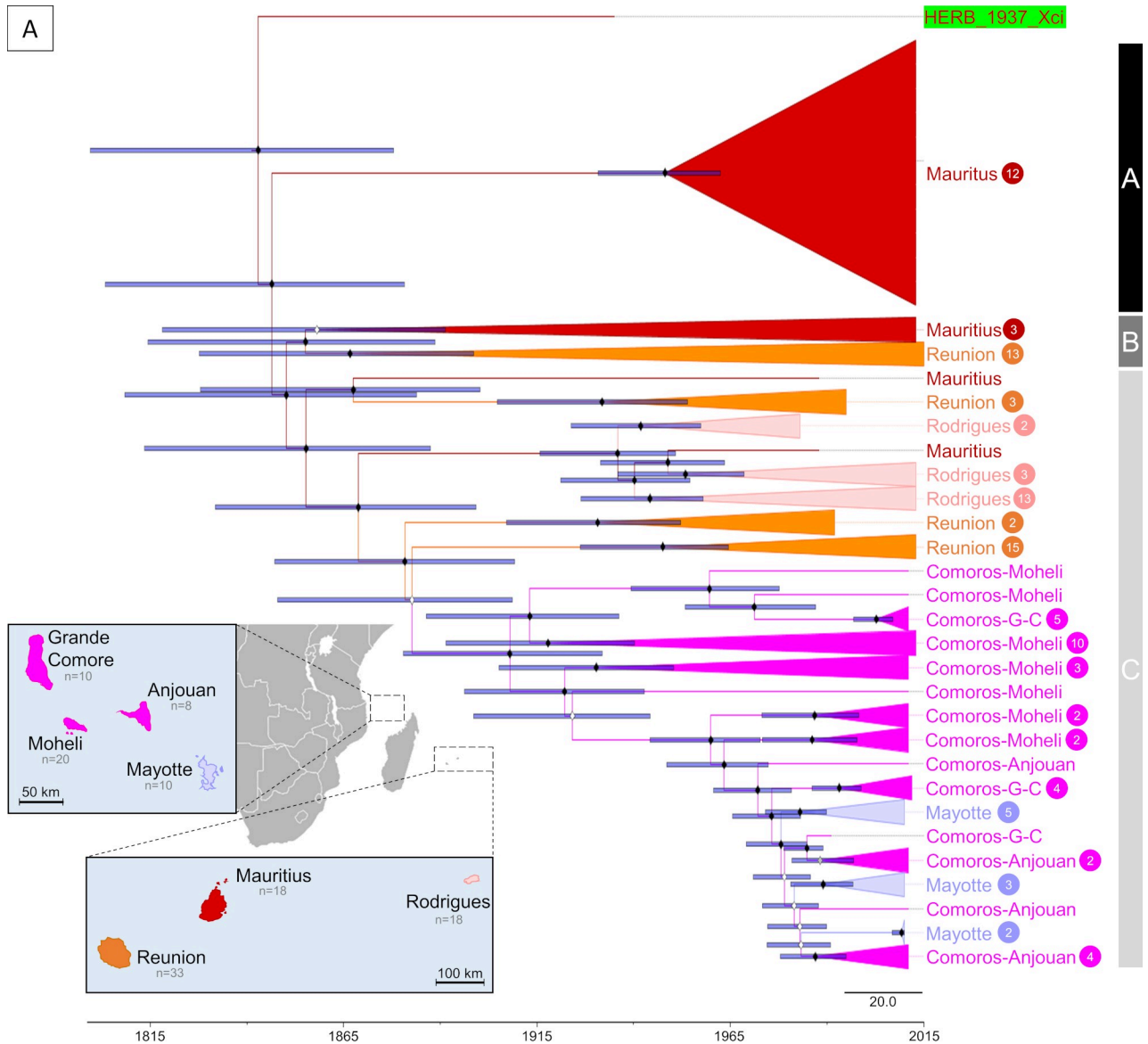
built a time-calibrated tree with BEAST [53], which was globally congruent (similar topology and node supports) with the ML tree (Fig 6A). Phylogenetic diversity of Mauritius island strains (1530.4) was significantly higher ( $p$ -value =  $2.2 \times 10^{-16}$ ) than those calculated from the other islands (Reunion strains = 1518.7, Rodrigues = 691.1, Comoros = 1024.0 and Mayotte = 319.0). We inferred a root date of 1843 [95% HPD: 1803–1881] and a mean substitution rate of  $9.4 \times 10^{-8}$  [95% HPD:  $7.3 \times 10^{-8}$ – $11.4 \times 10^{-8}$ ] per site per year, with a standard deviation for the uncorrelated log-normal relaxed clock of 0.271 [95% HPD: 0.182–0.366] suggesting low heterogeneity amongst branches (Figs 6B and S4). To specifically evaluate the contribution of HERB\_1937\_Xci, we considered modern strains only: although the dataset still displayed temporal signal (slope value =  $9.885 \times 10^{-5}$ , adjusted  $R^2 = 0.077$ ,  $p$ -value = 0.0009) (Fig 6B), the BEAST analysis performed under the same parameters yielded significantly different values. An older tree root date of 1800 [95% HPD: 1745–1852] was inferred, together with a lower mean substitution rate of  $8.2 \times 10^{-8}$  substitutions per site per year [95% HPD:  $6.4 \times 10^{-8}$ – $9.9 \times 10^{-8}$ ] and a standard deviation for the uncorrelated log-normal relaxed clock of 0.188 [95% HPD: 0.082–0.289] among branches (S4B Fig). In summary, when comparing the estimates of root ages—with and without HERB\_1937\_Xci in the datasets—our results indicate that integrating the historical sequence significantly improves the accuracy of the temporal inferences, with a reduction of the 95% HPD from ~107 years to ~78 years (Fig 6C).

## Discussion

We sequenced the genome of HERB\_1937\_Xci, an historical strain of the crop bacterial pathogen *Xanthomonas citri* pv. *citri* (Xci) from an infected herbarium specimen sampled in 1937 in Mauritius. To our knowledge, HERB\_1937\_Xci is the first historical genome of a pathogenic bacterium obtained from herbarium material. Similar achievement has been previously successfully realized on viruses [28,54], oomycetes such as *Phytophthora infestans* [14,23,24], and more recently on cyanobacteria [55]. But for plant pathogenic bacteria in general, and more specifically for Xci, only multilocus genotyping data could be exploited from such historical material [29].

Adopting a shotgun-based deep sequencing strategy allowed us to describe the metagenomic diversity contained within our historical herbarium specimen. Among assigned reads, HERB\_1937 displayed 1.2% of Xci DNA for 21.0% of *Citrus* sp. DNA, a pathogen/plant ratio in the range of those previously observed for *P. infestans*, a nonvascular pathogen isolated from infected herbarium potato leaves [20,23,24]. The microbial community also contained several bacterial genera, all described in NGS studies as part of the citrus leaf [56] or root [56,57] microbiota. The three most prominent genera (*Methylobacterium*, *Curtobacterium* and *Sphingomonas*, >0.5% of aligned reads) belong to the core citrus leaf microbiome [58], and the relative abundance of *Methylobacterium* reads among bacteria (11.7%) is consistent with studies on modern samples (from 5 to 58% [56]). These bacterial genera were thus likely associated to the living citrus plant, and/or to HERB\_1937 sample, colonized during collection and storage in the herbarium. Bieker *et al.* [59], using deamination studies, identified a fungal species proposed to have colonized herbarium specimens shortly after collection. As illustrated by the typical aDNA patterns we observed for *Methylobacterium* spp., we may exclude recent or laboratory contaminations [60]. Interestingly, up to 5.4% of the reads were assigned to human DNA resulting from contaminations during specimen manipulation (collection, mounting or storage). Finally, a substantial amount (60.1%) of HERB\_1937 were unassigned reads, reflecting either the incompleteness of the reference database as compared to the microbial diversity of the sample [61] or the difficulty for short reads to be assigned taxonomically, a typical result in ancient DNA research [62].





**Fig 6. Tip-dating Bayesian inferences on historical and modern *Xci* genomes from the SWIO islands.** (A) Dated BEAST tree of 116 *Xci* modern strains sampled from the SWIO islands between 1978 and 2015 with historical HERB\_1937\_*Xci* (highlighted in green) built from 2,632 non recombining SNPs. Node support values are displayed by diamonds, in white for Posterior Probabilities below 0.9, in black for values above 0.9; node bars cover 95% Highest Probability Density of node height. The tree is structured in three lineages (A, B & C). Branches are collapsed and colored, according to the sample's geographic origin, except lineage A, which is cartooned to help visualization. Tip labels include the geographic origin and, in cases of collapsed or cartooned branches, the number of samples. Map layer is from Natural Earth, available from <https://www.naturalearthdata.com>. (B) Linear regression of root-to-tip distance on year of sampling (tip date) test for temporal signal. Regression lines are plotted in blue when integrating historical HERB\_1937\_*Xci* genome and in red (dotted lines) when not. Grey areas correspond to their confidence interval. Associated values are the regression equation, adjusted  $R^2$  (Adj  $R^2$ ) and p-value. (C) Boxplot distribution of root age, with (left) and without (right) integrating historical HERB\_1937\_*Xci* in the dating inference, and associated statistical comparisons. Boxes represent 25<sup>th</sup> to 75<sup>th</sup> percentiles, Minimum-Maximum intervals are displayed by a vertical bar and outliers as circles.

<https://doi.org/10.1371/journal.ppat.1009714.g006>

Characterization of DNA degradation patterns specific to aDNA (fragmentation, depurination and deamination) combined with clear evidence of branch shortening confirmed the historical nature of our reconstructed *Xci* genome, a key point in any ancient DNA study [12,41]. Patterns of DNA degradation of HERB\_1937\_*Xci* appeared consistent with those measured on *P. infestans* from 19<sup>th</sup> century herbarium samples [23,24,61]. Interestingly, we observed significantly higher deamination rates of cytosine residues in reads mapping to either of the two plasmids, as compared to reads mapping to chromosomal DNA. Depurination rates and fragment sizes did not harbour such significant differences in our study. A possible explanation for our observation relates to differential methylation patterns of cytosines. In a recent study investigating epigenetic modifications in *Xanthomonas* species, N4-methylcytosines (N4meC, a bacteria-specific pattern) were identified in higher proportions in chromosomes versus plasmids [63]. Interestingly, N4meC have previously been found to be more resistant to deamination than unmethylated cytosines [64]. The lower deamination rate observed on HERB\_1937\_*Xci* chromosome (as compared to the plasmids) could thus be due to a better protection of the chromosomal cytosines from deamination, independently of depurination and fragmentation mechanisms. Further investigations, such as ancient methylome mappings [65], should refine our molecular understanding of the degradation patterns observed in this study.

Phylogenetic reconstruction confidently placed HERB\_1937\_*Xci* at the root of the modern SWIO lineages, a position that reveals its genetic relatedness with the SWIO *Xci* founding population. Modern Mauritian strains were found in all three main SWIO lineages and displayed the highest phylogenetic diversity, a typical pattern for source populations during biological invasions [66], which points Mauritius as the most likely entry point of ACC disease in the SWIO islands. Future studies including new historical genomes from other islands will be necessary to confirm this hypothesis. We estimated the age of the ancestor of all strains (*i.e.* the root), which is a proxy for *Xci* emergence date to 1843 [95% HPD: 1803–1881]. This predates the earliest record of the disease in the area (1917 in Mauritius [39]) and refines the recent estimation of 1818 [95% HPD: 1762–1868] obtained from modern strains only [36]. *Xci* and its main host genus, *Citrus*, originated in Asia [34,35] and were most likely disseminated out of their area of origin by human-mediated movements of plants or plant propagative material [31,67]. Richard *et al.* proposed two possible origins of the pathogen in the SWIO [36]. On the one hand, they hypothesized that a French botanist and colonial administrator, Pierre Poirve (1719–1786) could have introduced infected citrus plants from several Asian countries during his numerous peregrinations starting in mid-18<sup>th</sup> century [68]. Later, tens of thousands of indentured labourers arrived from several Asian countries (most numerous from India) after the abolition of slavery in Mauritius (1835) and Reunion (1848), mainly to work in agriculture [69]. This flow of people from the Asiatic continent, along with their possessions which consisted among other things of seeds, plants and fruits [70] may have led to the introduction of *Xci* in the SWIO area. The updated time frame of emergence inferred from our data favours

the second scenario. Future work including strains from the hypothetical Asian cradle of *Xci*, with some possibly obtained from herbarium specimens, will be required to investigate the geographic origin of the strains that first invaded SWIO.

Although both the root position of HERB\_1937\_*Xci* and the monophyly of all SWIO strains suggest one or few successful historical introductions of genetically (and likely geographically) closely related *Xci* strains in this area, the structure of the phylogeny indicates multiple inter-island migration events, likely via infected plant material exchange. Such events may have first occurred between Mauritius and Reunion islands at the very beginning of the history of *Xci* in the area, as illustrated by the deepness of the most recent common ancestor (MRCA) shared between strains of those two islands that used to share tight historical and political links at the time. More recent migrations between *i*) Mauritius and Rodrigues (an island ca. 600 km east of Mauritius, part of its territory), *ii*) Reunion and the Comoros archipelago (Mayotte, 1,435 km distant from Reunion, part of the French overseas territories) and *iii*) the four islands of the Comoros archipelago (promoted by their historical and economic relationships, see insert Fig 6A). Altogether, our findings emphasise the influence of human-associated migratory events in shaping the global distribution and the emergence of preadapted crop pathogens, a well-known phenomenon [6,24,71,72]. Additionally, our results indicate that integrating historical genomes in phylogenetic analyses significantly refines divergence time estimates, as highlighted in previous ancient DNA studies [73,74].

Tip-date calibration of the SWIO phylogenetic tree also enabled us to estimate a mean mutation rate of  $9.4 \times 10^{-8}$  substitutions per site per year for *Xci*. This value is consistent with the recent estimation of  $8.4 \times 10^{-8}$  substitutions per site per year obtained by Richard *et al.* in the same area [36] and falls within estimations made over a similar time span (80 years) on several human-associated bacterial pathogens, spanning one order of magnitude ( $10^{-8}$ – $10^{-7}$ ) [75]. This rate, among the first published for a crop pathogen, is averaged across all sites of the non-recombining portions of the *Xci* chromosome and appears to be homogeneous within the various SWIO lineages. Interestingly, we observed a relatively high dN/dS ratio as compared to other bacterial species [76], which might result from selection for diversification following *Xci* emergence and evolution within SWIO islands. In summary, our substitution rate estimate is crucial to further studies, since it can improve the prediction of the evolution of *Xci* using various modelling-based frameworks.

Finally, we aimed to compare the genomic features of HERB\_1937\_*Xci* with its modern counterparts. Among the 15 SNPs unique to HERB\_1937\_*Xci* and restricted to chromosome sequences, five non-synonymous SNPs are considered to induce conservative amino acid changes, and are thus not expected to alter the conformation or the active site of their respective proteins. Interestingly, among the six non-conservative SNPs, the location (next to the hinge and binding domain) of an amino acid substitution of the essential metabolic enzyme isocitrate dehydrogenase could modulate its adaptability, and thus the fitness of the pathogen [77]. Finally, seven non-synonymous SNPs account for unique amino acids at given positions of *Xanthomonas* sequence alignments, providing an exclusive signature for seven HERB\_1937\_*Xci* specific protein homologs.

Our investigation of HERB\_1937\_*Xci* gene content showed that it was globally similar to the one observed in reference strain IAPAR 306. The non-covered CDS corresponded to repeated CDS or to absent CDS. The former are mostly transposases, or other multicopy genes. Among actually absent CDS are mostly proteins of unknown function, recombinases, or notably a type I restriction-modification system, together with four adjacent CDS. The 27-kb block probably corresponds to a genomic island recently acquired by strain IAPAR 306 (and a few of its close relatives) but absent in other *Xci*. It is inserted in the middle of a CDS encoding for a putative competence protein [78]. However, as our gene content analysis

resulted from sequences reconstructed by mapping, we were unable to identify potential genome rearrangements. Furthermore, any genetic material present in HERB\_1937\_Xci but absent in the reference sequences used to reconstruct the historical genome would have been missed. Gene content investigation based on *de novo* assembly of historical reads would be a way to overcome this limitation but the short length of aDNA reads, their mixed origin as well as the relatively low coverage of HERB\_1937\_Xci hampered us from applying such strategy [79,80].

We showed that HERB\_1937\_Xci contains a complete set of genes for its type III secretion system, as well as the same assortment of effector genes as modern *Xci* strains [46]. In particular, Transcription Activator-Like Effectors (TALE) are crucial virulence factors for *Xci* [50]. We determined HERB\_1937\_Xci to possess between two and four paralogs of the functional *tale* gene *pthA4* present in strain IAPAR 306, a value consistent with modern *Xci* strains [81]. Although it was not possible to localize them in the genome or reconstitute their central repeat domain, sequences corresponding to their N- and C-terminal domains, as well as a repertoire of RVD sequences, were reconstructed, suggesting their functionality. Most of the essential RVD sequences were present in approximately the same proportion as in modern *Xci tale* genes. Three unique sequences encoding unreported RVDs could be mutational variants of the present RVD sequences: AAA—from AAT—(K\* from N\*), CACGAA and CAGGAT from CACGAT (respectively HE and QD from HD). A design of TALENs with artificial RVDs recently showed that HE and QD were functional and preferentially binding to C on target DNA *in vivo*, like HD [82]. This suggests that apart from undetectable loss of genes (in the case of effectors not identified in databases) and modification in the structure of the repeat region of TALE genes (which might have an important impact on virulence), the effector repertoire of *Xci* has been stable at least since the time of the last common ancestor of all SWIO strains.

In summary, our results show that herbarium specimens can provide a wealth of genomic information on bacterial pathogens, their associated microbial community, or their plant host (an aspect that we did not explore in this study). The present work focused on a single herbarium specimen in order to evaluate the feasibility of genetic analyzes and the added value such samples bring to phylogenetic and epidemiological approaches. Broader studies to reconstruct Asiatic citrus canker's worldwide propagation and evolutionary history would require additional, well-chosen, geographically and temporally representative samples. More generally, similar investigations could be and are performed on other important bacterial plant pathogens to elucidate their evolutionary history, investigate plant-pathogens interactions further, and study the temporal dynamic of plant-associated microbial communities. Such studies emphasise the interest of biological collections and will hopefully help to decipher the epidemiological and evolutionary factors leading to the emergence of plant pathogens. This, in turn, may provide clues to improve disease monitoring and achieve sustainable control.

## Material & methods

### Herbarium sampling

The collections of the Mauritius Herbarium (<https://herbaria.plants.ox.ac.uk/bol/mau>) were prospected in June 2017. Several citrus specimens displaying typical citrus canker lesions were sampled on site using gloves and sterile equipment and brought back to CIRAD laboratory in individual envelopes where they have been stored in vacuum-sealed boxes at 17°C until use. MAU 0015151 (Fig 1), a *Citrus* sp. specimen collected by Reginald E. Vaughan at Phoenix, Mauritius in 1937 was chosen as being the oldest specimen sampled from the SWIO area. The date and exact place of collection, which do not appear on the specimen itself, were found in the original collection book of the collector. MAU 0015151 was deposited in 1937 at the



collection of the Mauritius Institute (Port Louis, Mauritius). This collection was moved in 1960 to Réduit to form the core of The Mauritius Herbarium (MAU, acronym according Thiers 2021), where it has been preserved since under controlled temperature and humidity and regularly poisoned (e.g. fumigation and/or use of Kew mixture: solution of mercury, phenol, and ethanol).

### DNA extraction, quality control and real-time quantitative PCR assay

HERB\_1937 sample DNA extraction was performed in a bleach-cleaned facility room with no prior exposure to modern *Xci* DNA. DNA extraction was performed following a custom CTAB protocol modified from Ausubel (2003) [83]. Briefly, a pool of five canker lesions (to obtain approximately 10 mg) from a single leaf of HERB\_1937 were cut. A 10 mg piece of a plant species that is not a host to *Xci*, a *Coffea arabica* herbarium 1965 specimen, was integrated as an aDNA negative control sample. Both samples were pulverised at room temperature and soaked in a CTAB extraction solution (1% CTAB, 700 mM NaCl, 0.1 mg/mL Proteinase K, 0.05 mg/mL RNase A, 0.5% N-lauroylsarcosine, 1X Tris-EDTA) under constant agitation and until tissue lysis at 56°C (up to six hours); an equal volume of 24:1 chloroform: isoamyl alcohol was added before centrifugation and recuperation of the aqueous phase (twice), followed by adding 7/3 volume of pure ethanol for an overnight precipitation at -20°C. Dried pellets were resuspended in 10 mM Tris buffer and stored at -20°C until further use. Quality assessment was performed for fragment size and concentration with Qubit (Invitrogen life Technologies) and TapeStation (Agilent Technologies) high sensitivity assays, according to the manufacturers' instructions. To confirm the specific presence of *Xci* in HERB\_1937, we performed the *Xci*-exclusive Xac-qPCR diagnostic assay developed by Robène *et al.* on 3 replicates of 5 µL water-diluted (10 fold) DNA extract, our negative control and following the recommended amplification conditions [40].

### Library preparation & sequencing

Library preparation and sequencing were outsourced (<https://www.fasteris.com/dna/>). Briefly, DNA was converted into a double-stranded library using a custom TruSeq DNA Nano Illumina protocol omitting the fragmentation step and using a modified bead ratio to keep small fragments. Sequencing of both HERB\_1937 and the negative control sample was performed in a paired-end 2×150 cycles configuration on a single lane of the NextSeq flow cell.

### Initial read trimming and merging

BBDuk from BBMap 37.92 [84] was first run with an entropy of 0.6 to remove artefactual homopolymer sequences. Illumina adaptors were trimmed out using the Illuminaclip option in Trimmomatic 0.36 [85]. Such roughly trimmed-reads were processed using the post-mortem DNA damage pipeline detailed below. Additional quality-trimming was performed with Trimmomatic 0.36 based on base-quality (LEADING:15; TRAILING:15; SLIDINGWINDOW:5:15) and read length (MINLEN:30). Paired reads were then merged using Adapter-Removal 2.2.2 [86] using default parameters before running both the metagenomic and the phylogenetic pipelines detailed below and in Fig 2.

### Negative control sequences analysis

Reads generated from the negative control sample were sequentially mapped to reference sequence genomes of *Coffea arabica* (GCA\_003713225.1), *Citrus sinensis* (AJPS00000000.1)

and *Xci* (strain IAPAR 306, chromosome NC\_003919.1, plasmids pXAC33 NC\_003921.3 and pXAC64 NC\_003922.1) using BWA-aln 0.7.15 (default options and seed disabled).

### Metagenomic pipeline

The metagenomic composition of historical HERB\_1937 sample was assessed following a two-step procedure. First, reads were sequentially mapped to reference sequence genomes of human (GCF\_000001405.39), *Citrus sinensis* (AJPS00000000.1) and *Xci* (strain IAPAR 306, chromosome NC\_003919.1, plasmids pXAC33 NC\_003921.3 and pXAC64 NC\_003922.1) using the “very-sensitive” option (seed of -L 20) of Bowtie 2 [87]. In a second step, BLAST analysis was performed on 1,000,000 randomly chosen unmapped reads against the nucleotide database using the blastn command of NCBI BLAST 2.2.31 [88]. Only top hits with an e-value below 0.001 were saved. The proportion of each taxon in the sample was scaled over the total number of reads.

### Ancient DNA damage assessment pipeline

Post-mortem DNA damage measured by DNA fragment length distribution, purine frequencies before DNA breakpoints and 5' C to T or 3' G to A misincorporation patterns were assessed with mapDamage2 [89] for both the historical specimen and three modern strains (strains LJ225-01, LK144-08 & LM053-06 isolated in 2012, 2013 and 2015, respectively—see S1 Table). Alignments were generated using BWA-aln 0.7.15 (default options and seed disabled) [90] as short-read aligner for the historical specimen and Bowtie 2 (options—non-deterministic—very-sensitive) [87] for the modern strains using IAPAR 306 *Xci* reference genome (plasmids pXAC33, pXAC44 and chromosome). PCR duplicates were removed using picard-tools 2.7.0 MarkDuplicates [91]. An independent damage assessment was performed using *Methylobacterium* reference sequence (*Methylobacterium organophilum* strain DSM 760 QEKZ01000001.1) with BWA-aln (same options as above). Statistical analyses were performed using GraphPad Prism version 6.00 for macOS, GraphPad Software, San Diego, California USA ([www.graphpad.com](http://www.graphpad.com)) [92].

### Historical genome reconstruction & characterization

Sequencing depths were computed using BEDTools genomecov 2.24.0 [93], and graphically represented with CIRCOS 0.69.9 [94]. BAM files were extremity-trimmed for 5 bp at each end with BamUtil 1.0.14 [95]. SNPs were called with GATK UnifiedGenotyper [96]. SNPs that met at least one of the following conditions: depth < average depth + 1sd [ $X = 9$ ], allelic frequency < 0.9, distance from another SNP < 20 bp were considered as dubious and filtered out. Consensus historical sequences were then reconstructed by introducing the remaining high-quality SNPs in the reference genome and replacing both filtered-out variants and non-covered sites (depth = 0) by an N. Non-covered regions were identified with BEDTools 2.24.0 [93].

### Gene content analysis

The presence (or absence) of a CDS was assumed when its sequence coverage was found to be above (or below) a 75% threshold. Their repeated nature, as well as their hypothetical functions (as predicted for strain IAPAR 306, chromosome NC\_003919.1, plasmids pXAC33 NC\_003921.3 and pXAC64 NC\_003922.1) were assessed using the annotated reference sequences within the genome browser and synteny tool of the MicroScope platform [97] based on a small set of public strains from the SWIO and the rest of the world (C40, LH201, LB100-

1, JJ10-1, FDC217, LG115, LG97, LB302 [33]), and a few additional representatives of the genus *Xanthomonas* (*X. citri* pv. *bilvae* strain NCPPB 3213, *X. euvesicatoria* 85–10, *X. campestris* pv. *campestris* 8004, *X. perforans* 91–118).

To investigate the presence of virulence factors in HERB\_1937\_Xci, we used a list of 82 Type III effectors (see list in S3 Table) found in *Xanthomonas* [45,46]. The reference sequences used to assess homology were the IAPAR 306 CDS when available or other *Xanthomonas* CDS for genes not present in *Xci*. We assessed coverage for the 57 effectors found in *Xci* from the reconstructed historical genome. For the 25 effectors from other *Xanthomonas*, reads were realigned on reference sequences with BWA-aln as described above. Coverage data was recovered from BAM files with BAMStats 1.25 tool [98].

In a second step, we aimed to specifically retrieve reads that initially did not map to *tale* genes. We performed a BWA-aln alignment (options as above) on the sequences coding for the conserved N- and C-terminal domains of the *pthA4* CDS from strain IAPAR 306 (S1 Fig). For reads corresponding to the central repeat domain, we constructed a chimera sequence of three repeats (containing Ns at the variable nucleotide positions in RVD) as a reference for the mapping.

### Phylogeny pipeline & tree-calibration

An alignment of HERB\_1937\_Xci and 116 modern genomes (date range: 1978–2015) from the SWIO islands was constructed for phylogenetic analyses, with the modern *Xci* strain LG117 from Bangladesh used as outgroup (CDAX01000000) (S1 Table). Variants from modern strains were independently called and filtered using the same parameters as for HERB\_1937\_Xci (except for the threshold on depth that was modified to a value of 15). Regions acquired via horizontal gene transfers were identified with ClonalFrameML [51] and removed to account for the effect of recombination on phylogenetic reconstruction and avoid incongruent trees. A Maximum Likelihood tree was constructed using RAxML 8.2.4 [52] using a rapid Bootstrap analysis, a General Time-Reversible model of evolution [99] following a  $\Gamma$  distribution with four rate categories (GTRGAMMA) and 1,000 alternative runs.

The existence of a temporal signal was investigated by two different tests. First, a linear regression test between sample age and root-to-tip distances (computed from the ML tree) was done using the `distRoot` function from the “`adephylo`” R package [100]. Temporal signal was considered present if a significant positive correlation was observed. Secondly, we performed a date-randomization test [101] with 20 independent date-randomized datasets using R package “`TipDatingBeast`” [102]. Temporal signal was considered present when there was no overlap between the inferred root height 95% Highest Posterior Density (95% HPD) of the initial dataset and that of 20 date-randomized datasets. Tip-dating calibration Bayesian inferences were performed with BEAST 1.8.4 [53]. For this, leaf heights were constrained to be proportional to sample ages. Flat priors (*i.e.*, uniform distributions) for the substitution rate ( $10^{-12}$  to  $10^{-2}$  substitutions/site/year), as well as for the age of any internal node in the tree, were applied. We also considered a GTR substitution model with a  $\Gamma$  distribution and invariant sites (GTR+G+I), an uncorrelated relaxed log-normal clock to account for variations between lineages, and a tree prior for demography of exponential growth as best-fit parameters described in Richard *et al.* [36]. The Bayesian topology was conjointly estimated with all other parameters during the Markov Chain Monte-Carlo and no prior information from the ML tree was incorporated in BEAST. Three independent chains were run for 25 million steps and sampled every 2,500 steps with a burn-in of 2,500 steps. Convergence to the stationary distribution and sufficient sampling and mixing were checked by inspection of posterior samples (effective sample size >200) in Tracer 1.7.1 [103]. Parameter estimation was based on the samples combined from the different chains. The best-supported tree was estimated from the combined samples by

using the maximum clade credibility method implemented in TreeAnnotator [53]. In order to assess the effect of including our historical sample in the tree calibration, we computed the same inferences on a dataset excluding HERB\_1937\_Xci. Wilcoxon rank sum test with continuity correction and a Bartlett test of homogeneity of variances were performed on the posterior estimates of the tree root age, to respectively compare the mean and variance of this parameter from both datasets. Finally, phylogenetic diversity (PD) [104], calculated as the sum of branch lengths of the minimum spanning path between strains of the region (island, or group of islands in the case of the Comoros) was calculated on patristic distances from the reconstructed phylogeny using the distRoot function implemented in “adephylo” R package [100]. To account for heterogeneity in region samplings, they were down-sampled to the smallest sampling (Mayotte = 10) and PD by region averaged over 1,000 iterations. PD comparison was done using a Wilcoxon rank sum test with continuity correction.

## Supporting information

**S1 Fig. Reads depth of a Transcription Activator-Like Effector (TALE) gene of HERB\_1937.**

(PDF)

**S2 Fig. Maximum Likelihood (ML) phylogenetic tree of *Xci* genomes.**

(PDF)

**S3 Fig. Date-randomization test results.**

(PDF)

**S4 Fig. Effect of integrating HERB\_1937\_Xci on substitution rate estimates in BEAST.**

(PDF)

**S1 Table. Published modern genomes included in the phylogenetic analyzes.**

(PDF)

**S2 Table. List of *Xci* reference strain IAPAR 306 coding sequences (CDS) covered on less than 75% of their length by HERB\_1937\_Xci reads and hence designed as non-covered.**

(PDF)

**S3 Table. List and coverage of 82 *Xanthomonas* virulence factors CDS (pthA4 not included) used in this study.**

(PDF)

**S4 Table. List and frequency of nucleotide patterns coding for RVD found in HERB\_1937\_Xci reads.**

(PDF)

**S5 Table. Description of the 14 SNPs found in coding regions between HERB\_1937\_Xci and modern strains of the SWIO clade.**

(PDF)

## Acknowledgments

We are grateful to F. Chiroleu, A. Doizy, A. Duvermy, P. Lefeuvre, F. Balloux, V. Llaurens, R. Debryne, A. Pérez-Quintero & I. Robène for valuable comments and discussions. Computational work was performed on the CIRAD HPC data center of the South Green bioinformatics platform (<http://www.southgreen.fr/>)



## Author Contributions

**Conceptualization:** Paola E. Campos, Philippe Roumagnac, Boris Szurek, Nathalie Becker, Lionel Gagnevin, Adrien Rieux.

**Data curation:** Paola E. Campos, Adrien Rieux.

**Formal analysis:** Paola E. Campos, Nathalie Becker, Lionel Gagnevin, Adrien Rieux.

**Funding acquisition:** Philippe Roumagnac, Boris Szurek, Nathalie Becker, Lionel Gagnevin, Adrien Rieux.

**Investigation:** Paola E. Campos, Clara Groot Crego, Karine Boyer, Damien Richard, Olivier Pruvost, Nathalie Becker, Lionel Gagnevin, Adrien Rieux.

**Methodology:** Paola E. Campos, Nathalie Becker, Lionel Gagnevin, Adrien Rieux.

**Resources:** Myriam Gaudeul, Claudia Baider.

**Supervision:** Nathalie Becker, Lionel Gagnevin, Adrien Rieux.

**Visualization:** Paola E. Campos, Adrien Rieux.

**Writing – original draft:** Paola E. Campos, Clara Groot Crego, Nathalie Becker, Lionel Gagnevin, Adrien Rieux.

**Writing – review & editing:** Paola E. Campos, Clara Groot Crego, Claudia Baider, Damien Richard, Olivier Pruvost, Philippe Roumagnac, Boris Szurek, Nathalie Becker, Lionel Gagnevin, Adrien Rieux.

## References

1. Stukenbrock EH, McDonald BA. The origins of plant pathogens in agro-ecosystems. *Annu Rev Phytopathol.* 2008; 46:75–100. <https://doi.org/10.1146/annurev.phyto.010708.154114> PMID: 18680424
2. Turner RS. After the famine: plant pathology, *Phytophthora infestans*, and the late blight of potatoes, 1845–1960. *Hist Stud Phys Biol.* 2005; 35:341–70. <https://doi.org/10.1525/hsps.2005.35.2.341>
3. Savary S, Willcoquet L, Pethybridge SJ, Esker P, McRoberts N, Nelson A. The global burden of pathogens and pests on major food crops. *Nat Ecol Evol.* 2019; 3:430–9. <https://doi.org/10.1038/s41559-018-0793-y> PMID: 30718852
4. FAO, IFAD, UNICEF, WFP & WHO. The state of food security and nutrition in the world—Building resilience for food and food security. Rome: FAO; 2017.
5. Bernades MFF, Pazin M, Pereira LC, Dorta DJ. Impact of pesticides on environmental and human health. *Toxicology studies: cells, drugs and environment.* Rijeka, Croatia; 2015. pp.195–233.
6. Anderson PK, Cunningham AA, Patel NG, Morales FJ, Epstein PR, Daszak P. Emerging infectious diseases of plants: pathogen pollution, climate change and agrotechnology drivers. *Trends Ecol Evol.* 2004; 19:535–44. <https://doi.org/10.1016/j.tree.2004.07.021> PMID: 16701319
7. Pallen MJ, Loman NJ, Penn CW. High-throughput sequencing and clinical microbiology: progress, opportunities and challenges. *Curr Opin Microbiol.* 2010; 13:625–31. <https://doi.org/10.1016/j.mib.2010.08.003> PMID: 20843733
8. Relman DA. Microbial genomics and infectious diseases. *N Engl J Med.* 2011; 365:347–57. <https://doi.org/10.1056/NEJMr1003071> PMID: 21793746
9. Croucher NJ, Didelot X. The application of genomics to tracing bacterial pathogen transmission. *Curr Opin Microbiol.* 2015; 23:62–7. <https://doi.org/10.1016/j.mib.2014.11.004> PMID: 25461574
10. Li LM, Grassly NC, Fraser C. Genomic analysis of emerging pathogens: methods, application and future trends. *Genome Biol.* 2014; 15:1–9. <https://doi.org/10.1186/s13059-014-0541-9> PMID: 25418281
11. Drummond AJ, Pybus OG, Rambaut A, Forsberg R, Rodrigo AG. Measurably evolving populations. *Trends Ecol Evol.* 2003; 18:481–8. [https://doi.org/10.1016/S0169-5347\(03\)00216-7](https://doi.org/10.1016/S0169-5347(03)00216-7)

12. Pääbo S, Poinar H, Serre D, Jaenicke-Després V, Hebler J, Rohland N, et al. Genetic analyses from ancient DNA. *Annu Rev Genet.* 2004; 38:645–79. <https://doi.org/10.1146/annurev.genet.37.110801.143214> PMID: 15568989
13. Bieker VC, Martin MD. Implications and future prospects for evolutionary analyses of DNA in historical herbarium collections. *Bot Lett.* 2018; 165:409–18. <https://doi.org/10.1080/23818107.2018.1458651>
14. Yoshida K, Burbano HA, Krause J, Thines M, Weigel D, Kamoun S. Mining herbaria for plant pathogen genomes: back to the future. *PLoS Pathog.* 2014; 10:1–6. <https://doi.org/10.1371/journal.ppat.1004028> PMID: 24763501
15. Ristaino JB, Groves CT, Parra GR. PCR amplification of the Irish potato famine pathogen from historic specimens. *Nature.* 2001; 411:695–7. <https://doi.org/10.1038/35079606> PMID: 11395772
16. May KJ, Ristaino JB. Identity of the mtDNA haplotype(s) of *Phytophthora infestans* in historical specimens from the Irish potato famine. *Mycol Res.* 2004; 108:171–9. <https://doi.org/10.1017/s0953756204009876> PMID: 15229999
17. Saville AC, Martin MD, Ristaino JB. Historic late blight outbreaks caused by a widespread dominant lineage of *Phytophthora infestans* (Mont.) de Bary. *PLoS ONE.* 2016; 11:1–22. <https://doi.org/10.1371/journal.pone.0168381> PMID: 28030580
18. Antonovics J, Hood ME, Thrall PH, Abrams JY, Duthie GM. Herbarium studies on the distribution of anther-smut fungus (*Microbotryum violaceum*) and *Silene* species (*Caryophyllaceae*) in the eastern United States. *Am J Bot.* 2003; 90:1522–31. <https://doi.org/10.3732/ajb.90.10.1522> PMID: 21659105
19. Gutaker RM, Reiter E, Furtwängler A, Schuenemann VJ, Burbano HA. Extraction of ultrashort DNA molecules from herbarium specimens. *BioTechniques.* 2017; 62:1–4. <https://doi.org/10.2144/000114517> PMID: 28193151
20. Yoshida K, Sasaki E, Kamoun S. Computational analyses of ancient pathogen DNA from herbarium samples: challenges and prospects. *Front Plant Sci.* 2015; 6:1–6. <https://doi.org/10.3389/fpls.2015.00001> PMID: 25653664
21. Biek R, Pybus OG, Lloyd-Smith JO, Didelot X. Measurably evolving pathogens in the genomic era. *Trends Ecol Evol.* 2015; 30:306–13. <https://doi.org/10.1016/j.tree.2015.03.009> PMID: 25887947
22. Rieux A, Balloux F. Inferences from tip-calibrated phylogenies: a review and a practical guide. *Mol Ecol.* 2016; 25:1911–24. <https://doi.org/10.1111/mec.13586> PMID: 26880113
23. Martin MD, Cappellini E, Samaniego JA, Zepeda ML, Campos PF, Seguin-Orlando A, et al. Reconstructing genome evolution in historic samples of the Irish potato famine pathogen. *Nat Commun.* 2013; 4:1–7. <https://doi.org/10.1038/ncomms3172> PMID: 23863894
24. Yoshida K, Schuenemann VJ, Cano LM, Pais M, Mishra B, Sharma R, et al. The rise and fall of the *Phytophthora infestans* lineage that triggered the Irish potato famine. *eLife.* 2013; 2:1–25. <https://doi.org/10.7554/eLife.00731> PMID: 23741619
25. Ristaino JB. The importance of mycological and plant herbaria in tracking plant killers. *Front Ecol Evol.* 2020; 7:1–11. <https://doi.org/10.3389/fevo.2019.00521>
26. Al Rwahnih M, Rowhani A, Golino D. First report of Grapevine red blotch-associated virus in archival grapevine material from Sonoma County, California. *Plant Dis.* 2015; 99:895. <https://doi.org/10.1094/PDIS-12-14-1252-PDN>
27. Malmstrom CM, Shu R, Linton EW, Newton LA, Cook MA. Barley yellow dwarf viruses (BYDVs) preserved in herbarium specimens illuminate historical disease ecology of invasive and native grasses. *J Ecology.* 2007; 95:1153–66. <https://doi.org/10.1111/j.1365-2745.2007.01307.x>
28. Smith O, Clapham A, Rose P, Liu Y, Wang J, Allaby RG. A complete ancient RNA genome: identification, reconstruction and evolutionary history of archaeological Barley stripe mosaic virus. *Sci Rep.* 2015; 4:1–6. <https://doi.org/10.1038/srep04003> PMID: 24499968
29. Li W, Song Q, Brlansky RH, Hartung JS. Genetic diversity of citrus bacterial canker pathogens preserved in herbarium specimens. *PNAS.* 2007; 104:18427–32. <https://doi.org/10.1073/pnas.0705590104> PMID: 17998540
30. Hasse CH. *Pseudomonas citri*, the cause of citrus canker. *J Agric Res.* 1915;97–100.
31. Graham JH, Gottwald TR, Cubero J, Achor DS. *Xanthomonas axonopodis* pv. *citri*: factors affecting successful eradication of citrus canker. *Mol Plant Pathol.* 2004; 5:1–15. <https://doi.org/10.1046/j.1364-3703.2004.00197.x> PMID: 20565577
32. Fawcett HS, Jenkins AE. Records of citrus canker from herbarium specimens of the genus *Citrus* in England and the United States. *Phytopathology.* 1933;820–4.
33. Gordon JL, Lefeuvre P, Escalon A, Barbe V, Cruveiller S, Gagnevin L, et al. Comparative genomics of 43 strains of *Xanthomonas citri* pv. *citri* reveals the evolutionary events giving rise to pathotypes with different host ranges. *BMC Genomics.* 2015; 16:1–20. <https://doi.org/10.1186/1471-2164-16-1> PMID: 25553907

34. Patané JSL, Martins J, Rangel LT, Belasque J, Digiampietri LA, Facincani AP, et al. Origin and diversification of *Xanthomonas citri* subsp. *citri* pathotypes revealed by inclusive phylogenomic, dating, and biogeographic analyses. *BMC Genomics*. 2019; 20:1–23. <https://doi.org/10.1186/s12864-018-5379-1> PMID: 30606130
35. Pruvost O, Magne M, Boyer K, Leduc A, Tourterel C, Drevet C, et al. A MLVA genotyping scheme for global surveillance of the citrus pathogen *Xanthomonas citri* pv. *citri* suggests a worldwide geographical expansion of a single genetic lineage. *PLoS ONE*. 2014; 9:1–11. <https://doi.org/10.1371/journal.pone.0098129> PMID: 24897119
36. Richard D, Pruvost O, Balloux F, Boyer C, Rieux A, Lefeuvre P. Time-calibrated genomic evolution of a monomorphic bacterium during its establishment as an endemic crop pathogen. *Mol Ecol*. 2020;1–13. <https://doi.org/10.1111/mec.15328> PMID: 31916358
37. Richard D, Ravigné V, Rieux A, Facon B, Boyer C, Boyer K, et al. Adaptation of genetically monomorphic bacteria: evolution of copper resistance through multiple horizontal gene transfers of complex and versatile mobile genetic elements. *Mol Ecol*. 2017; 26:2131–49. <https://doi.org/10.1111/mec.14007> PMID: 28101896
38. Pruvost O, Boyer K, Ravigné V, Richard D, Vernière C. Deciphering how plant pathogenic bacteria disperse and meet: Molecular epidemiology of *Xanthomonas citri* pv. *citri* at microgeographic scales in a tropical area of Asiatic citrus canker endemicity. *Evol Appl*. 2019; 12:1523–38. <https://doi.org/10.1111/eva.12788> PMID: 31462912
39. Aubert B. Vergers de la Réunion et de l'Océan Indien. CIRAD. Hommes et fruits en pays du Sud. CIRAD. 2014. pp.111–65. French
40. Robène I, Maillot-Lebon V, Chabirand A, Moreau A, Becker N, Moumène A, et al. Development and comparative validation of genomic-driven PCR-based assays to detect *Xanthomonas citri* pv. *citri* in citrus plants. *BMC Microbiol*. 2020; 20:1–13. <https://doi.org/10.1186/s12866-019-1672-7> PMID: 31896348
41. da Silva ACR, Ferro JA, Reinach FC, Farah CS, Furlan LR, Quaggio RB, et al. Comparison of the genomes of two *Xanthomonas* pathogens with differing host specificities. *Nature*. 2002; 417:459–63. <https://doi.org/10.1038/417459a> PMID: 12024217
42. Dabney J, Meyer M, Pääbo S. Ancient DNA damage. *Cold Spring Harb Perspect Biol*. 2013; 7:1–8. <https://doi.org/10.1101/cshperspect.a012567> PMID: 23729639
43. Jónsson H, Ginolhac A, Schubert M, Johnson PLF, Orlando L. mapDamage2.0: fast approximate Bayesian estimates of ancient DNA damage parameters. *Bioinformatics*. 2013; 29:1682–4. <https://doi.org/10.1093/bioinformatics/btt193> PMID: 23613487
44. Büttner D. Behind the lines—actions of bacterial type III effector proteins in plant cells. *FEMS Microbiol Rev*. 2016; 40:894–937. <https://doi.org/10.1093/femsre/fuw026> PMID: 28201715
45. The *Xanthomonas* Resource (<http://www.xanthomonas.org/t3e.html>). 2018. Available from <http://www.xanthomonas.org/t3e.html> (accessed in May 2020)
46. Escalon A, Javegny S, Vernière C, Noël LD, Vital K, Poussier S, et al. Variations in type III effector repertoires, pathological phenotypes and host range of *Xanthomonas citri* pv. *citri* pathotypes: type III effectors in *Xanthomonas citri* pv. *citri*. *Mol Plant Pathol*. 2013; 14:483–96. <https://doi.org/10.1111/mpp.12019> PMID: 23437976
47. Swarup S, De Feyter R, Brlansky RH, Gabriel DW. A pathogenicity locus from *Xanthomonas citri* enables strains from several pathovars of *X. campestris* to elicit canker-like lesions on citrus. *Phytopathology*. 1991; 81:802–9.
48. Duan YP, Castañeda A, Zhao G, Erdos G, Gabriel DW. Expression of a single, host-specific, bacterial pathogenicity gene in plant cells elicits division, enlargement, and cell death. *Mol Plant Microbe Interact*. 1999; 12:556–60. <https://doi.org/10.1094/MPMI.1999.12.6.556>
49. Hu Y, Zhang J, Jia H, Sosso D, Li T, Frommer WB, et al. *Lateral organ boundaries 1* is a disease susceptibility gene for citrus bacterial canker disease. *PNAS*. 2014; 111:521–9. <https://doi.org/10.1073/pnas.1318582111> PMID: 24367083
50. Perez-Quintero AL, Szurek B. A decade decoded: spies and hackers in the history of TAL effectors research. *Annu Rev Phytopathol*. 2019; 57:459–81. <https://doi.org/10.1146/annurev-phyto-082718-100026> PMID: 31387457
51. Didelot X, Wilson DJ. ClonalFrameML: efficient inference of recombination in whole bacterial genomes. *PLoS Comput Biol*. 2015; 11:1–18. <https://doi.org/10.1371/journal.pcbi.1004041> PMID: 25675341
52. Stamatakis A. RAxML version 8: a tool for phylogenetic analysis and post-analysis of large phylogenies. *Bioinformatics*. 2014; 30:1312–3. <https://doi.org/10.1093/bioinformatics/btu033> PMID: 24451623

53. Drummond AJ, Rambaut A. BEAST: Bayesian evolutionary analysis by sampling trees. *BMC Evol Biol.* 2007; 7:214. <https://doi.org/10.1186/1471-2148-7-214> PMID: 17996036
54. Peyambari M, Warner S, Stoler N, Rainer D, Roossinck MJ. A 1,000-year-old RNA virus. *J Virol.* 2018; 93:1–30. <https://doi.org/10.1128/JVI.01188-18> PMID: 30305356
55. Dvořák P, Hašler P, Pouličková A. New insights into the genomic evolution of cyanobacteria using herbarium exsiccatae. *Eur J Phycol.* 2020; 55:30–8. <https://doi.org/10.1080/09670262.2019.1638523>
56. Blaustein RA, Lorca GL, Meyer JL, Gonzalez CF, Teplitski M. Defining the core citrus leaf- and root-associated microbiota: factors associated with community structure and implications for managing huanglongbing (citrus greening) disease. *Appl Environ Microbiol.* 2017; 83:1–14. <https://doi.org/10.1128/AEM.00210-17> PMID: 28341678
57. Xu J, Zhang Y, Zhang P, Trivedi P, Riera N, Wang Y, et al. The structure and function of the global citrus rhizosphere microbiome. *Nat Commun.* 2018; 9:1–10. <https://doi.org/10.1038/s41467-017-02088-w> PMID: 29317637
58. Zhang Y, Trivedi P, Xu J, Roper MC, Wang N. The citrus microbiome: from structure and function to microbiome engineering and beyond. *Phytobiomes J.* 2021; 1–40. <https://doi.org/10.1094/PBIOMES-11-20-0084-RVW>
59. Bieker VC, Sánchez Barreiro F, Rasmussen JA, Brunier M, Wales N, Martin MD. Metagenomic analysis of historical herbarium specimens reveals a postmortem microbial community. *Mol Ecol Resour.* 2020; 1–14. <https://doi.org/10.1111/1755-0998.13125> PMID: 31823489
60. Glassing A, Dowd SE, Galandiuk S, Davis B, Chiodini RJ. Inherent bacterial DNA contamination of extraction and sequencing reagents may affect interpretation of microbiota in low bacterial biomass samples. *Gut Pathog.* 2016; 8:1–12. <https://doi.org/10.1186/s13099-015-0083-z> PMID: 26759607
61. Weiß CL, Gansauge M-T, Aximu-Petri A, Meyer M, Burbano HA. Mining ancient microbiomes using selective enrichment of damaged DNA molecules. *BMC Genomics.* 2020; 21:1–9. <https://doi.org/10.1186/s12864-020-06820-7> PMID: 32586278
62. Key FM, Posth C, Krause J, Herbig A, Bos KI. Mining metagenomic datasets for ancient DNA: recommended protocols for authentication. *Trends in Genetics.* 2017; 33:508–20. <https://doi.org/10.1016/j.tig.2017.05.005> PMID: 28688671
63. Seong HJ, Park H-J, Hong E, Lee SC, Sul WJ, Han S-W. Methylome analysis of two *Xanthomonas* spp. using single-molecule real-time sequencing. *Plant Pathol J.* 2016; 32:500–7. <https://doi.org/10.5423/PPJ.FT.10.2016.0216> PMID: 27904456
64. Ehrlich M, Norris KF, Wang RY, Kuo KC, Gehrke CW. DNA cytosine methylation and heat-induced deamination. *Biosci Rep.* 1986; 6:387–93. <https://doi.org/10.1007/BF01116426> PMID: 3527293
65. Hanghøj K, Renaud G, Albrechtsen A, Orlando L. DamMet: ancient methylome mapping accounting for errors, true variants, and post-mortem DNA damage. *GigaScience.* 2019; 8:1–6. <https://doi.org/10.1093/gigascience/giz025> PMID: 31004132
66. Estoup A, Guillemaud T. Reconstructing routes of invasion using genetic data: why, how and so what? *Mol Ecol.* 2010; 19:4113–30. <https://doi.org/10.1111/j.1365-294X.2010.04773.x> PMID: 20723048
67. Gottwald TR, Graham JH, Schubert TS. Citrus canker: the pathogen and its impact. *Plant Health Prog.* 2002; 1–34. <https://doi.org/10.1094/PHP-2002-0812-01-RV>
68. Du Pont de Nemours PS. Oeuvres complètes de P. Poivre, intendant des isles de France et de Bourbon, correspondant de l'académie des sciences, etc. 1797. French
69. Carter M, Torabully K. Coolitude, an anthology of the Indian labour diaspora. Anthem Press; 2002.
70. Beaujard P. The first migrants to Madagascar and their introduction of plants: linguistic and ethnological evidence. *Azania: Archaeological Research in Africa.* 2011; 46:169–89. <https://doi.org/10.1080/0067270X.2011.580142>
71. McDonald BA, Linde C. Pathogen population genetics, evolutionary potential, and durable resistance. *Annu Rev Phytopathol.* 2002; 40:349–79. <https://doi.org/10.1146/annurev.phyto.40.120501.101443> PMID: 12147764
72. Goss EM. Genome-enabled analysis of plant-pathogen migration. *Annu Rev Phytopathol.* 2015; 53:121–35. <https://doi.org/10.1146/annurev-phyto-080614-115936> PMID: 25938274
73. Bos KI, Harkins KM, Herbig A, Coscolla M, Weber N, Comas I, et al. Pre-Columbian mycobacterial genomes reveal seals as a source of New World human tuberculosis. *Nature.* 2014; 514:494–7. <https://doi.org/10.1038/nature13591> PMID: 25141181
74. Duggan AT, Perdomo MF, Piombino-Mascalci D, Marciniak S, Poinar D, Emery MV, et al. 17th Century variola virus reveals the recent history of smallpox. *Curr Biol.* 2016; 26:3407–12. <https://doi.org/10.1016/j.cub.2016.10.061> PMID: 27939314



75. Duchêne S, Holt KE, Weill F-X, Le Hello S, Hawkey J, Edwards DJ, et al. Genome-scale rates of evolutionary change in bacteria. *Microb Genom.* 2016; 2:1–12. <https://doi.org/10.1099/mgen.0.000094> PMID: 28348834
76. Rocha EPC, Smith JM, Hurst LD, Holden MTG, Cooper JE, Smith NH, et al. Comparisons of dN/dS are time dependent for closely related bacterial genomes. *J Theor Biol.* 2006; 239:226–35. <https://doi.org/10.1016/j.jtbi.2005.08.037> PMID: 16239014
77. Spaans SK, Weusthuis RA, van der Oost J, Kengen SWM. NADPH-generating systems in bacteria and archaea. *Front Microbiol.* 2015; 6:1–27. <https://doi.org/10.3389/fmicb.2015.00001> PMID: 25653648
78. Gwinn ML, Ramanathan R, Smith HO, Tomb J-F. A new transformation-deficient mutant of *Haemophilus influenzae* Rd with normal DNA uptake. *J Bacteriol.* 1998; 180:746–8. <https://doi.org/10.1128/JB.180.3.746-748.1998> PMID: 9457884
79. Alkan C, Sajjadian S, Eichler EE. Limitations of next-generation genome sequence assembly. *Nat Methods.* 2011; 8:61–5. <https://doi.org/10.1038/nmeth.1527> PMID: 21102452
80. Nagarajan N, Pop M. Sequence assembly demystified. *Nat Rev Genet.* 2013; 14:157–67. <https://doi.org/10.1038/nrg3367> PMID: 23358380
81. Lee S, Lee J, Lee DH, Lee Y-H. Diversity of *pthA* gene of *Xanthomonas* strains causing citrus bacterial canker and its relationship with virulence. *Plant Pathol J.* 2008; 24:357–60. <https://doi.org/10.5423/PPJ.2008.24.3.357>
82. Juillerat A, Pessereau C, Dubois G, Guyot V, Maréchal A, Valton J, et al. Optimized tuning of TALEN specificity using non-conventional RVDs. *Sci Rep.* 2015; 5:1–7. <https://doi.org/10.1038/srep08150> PMID: 25632877
83. Ausubel FM, Brent R, Kingston RE, Moore DD, Seidman JG, Smith JA, et al. *Current protocols in molecular biology.* John Wiley & Sons, New York; 2003.
84. Joint Genome Institute. BBTools. 1997. Available from <https://jgi.doe.gov/data-and-tools/bbtools/bbtools-user-guide/bbduk-guide/> (accessed in May 2020)
85. Bolger AM, Lohse M, Usadel B. Trimmomatic: a flexible trimmer for Illumina sequence data. *Bioinformatics.* 2014; 30:2114–20. <https://doi.org/10.1093/bioinformatics/btu170> PMID: 24695404
86. Schubert M, Lindgreen S, Orlando L. AdapterRemoval v2: rapid adapter trimming, identification, and read merging. *BMC Res Notes.* 2016; 9:1–7. <https://doi.org/10.1186/s13104-015-1837-x> PMID: 26725043
87. Langmead B, Salzberg SL. Fast gapped-read alignment with Bowtie 2. *Nat Methods.* 2012; 9:357–9. <https://doi.org/10.1038/nmeth.1923> PMID: 22388286
88. Altschul SF, Gish W, Miller W, Myers EW, Lipman DJ. Basic local alignment search tool. *J Mol Biol.* 1990; 215:403–10. [https://doi.org/10.1016/S0022-2836\(05\)80360-2](https://doi.org/10.1016/S0022-2836(05)80360-2) PMID: 2231712
89. Ginolhac A, Rasmussen M, Gilbert MTP, Willerslev E, Orlando L. mapDamage: testing for damage patterns in ancient DNA sequences. *Bioinformatics.* 2011; 27:2153–5. <https://doi.org/10.1093/bioinformatics/btr347> PMID: 21659319
90. Li H, Durbin R. Fast and accurate short read alignment with Burrows-Wheeler transform. *Bioinformatics.* 2009; 25:1754–60. <https://doi.org/10.1093/bioinformatics/btp324> PMID: 19451168
91. Broad Institute. Picard Tools (<http://broadinstitute.github.io/picard/>).
92. GraphPad Prism. San Diego, California, USA: GraphPad Software; Available from [www.graphpad.com](http://www.graphpad.com) (accessed in May 2020)
93. Quinlan AR, Hall IM. BEDTools: a flexible suite of utilities for comparing genomic features. *Bioinformatics.* 2010; 26:841–2. <https://doi.org/10.1093/bioinformatics/btq033> PMID: 20110278
94. Krzywinski M, Schein J, Birol I, Connors J, Gascoyne R, Horsman D, et al. Circos: an information aesthetic for comparative genomics. *Genome Res.* 2009; 19:1639–45. <https://doi.org/10.1101/gr.092759.109> PMID: 19541911
95. Jun G, Wing MK, Abecasis GR, Kang HM. An efficient and scalable analysis framework for variant extraction and refinement from population-scale DNA sequence data. *Genome Res.* 2015; 25:918–25. <https://doi.org/10.1101/gr.176552.114> PMID: 25883319
96. DePristo MA, Banks E, Poplin R, Garimella KV, Maguire JR, Hartl C, et al. A framework for variation discovery and genotyping using next-generation DNA sequencing data. *Nat Genet.* 2011; 43:491–8. <https://doi.org/10.1038/ng.806> PMID: 21478889
97. Vallenet D, Engelen S, Mornico D, Cruveiller S, Fleury L, Lajus A, et al. MicroScope: a platform for microbial genome annotation and comparative genomics. *Database.* 2009; 1–12. <https://doi.org/10.1093/database/bap021> PMID: 20157493

98. SourceForge. BAMStats. 2011. Available from <http://bamstats.sourceforge.net> (accessed in May 2020)
99. Tavaré S, Miura RM. Some probabilistic and statistical problems in the analysis of DNA sequences. *Some mathematical questions in biology: DNA sequence analysis*. Providence; 1986. pp.57–86.
100. Jombart T, Balloux F, Dray S. *adephylo*: new tools for investigating the phylogenetic signal in biological traits. *Bioinformatics*. 2010; 26:1907–9. <https://doi.org/10.1093/bioinformatics/btq292> PMID: 20525823
101. Duchêne S, Duchêne D, Holmes EC, Ho SYW. The performance of the date-randomization test in phylogenetic analyses of time-structured virus data. *Mol Biol Evol*. 2015; 32:1895–906. <https://doi.org/10.1093/molbev/msv056> PMID: 25771196
102. Rieux A, Khatchikian CE. TIPDATINGBEAST: an R package to assist the implementation of phylogenetic tip-dating tests using BEAST. *Mol Ecol Resour*. 2017; 17:608–13. <https://doi.org/10.1111/1755-0998.12603> PMID: 27717245
103. Rambaut A, Drummond AJ, Xie D, Baele G, Suchard MA. Posterior summarization in Bayesian phylogenetics using Tracer 1.7. *Syst Biol*. 2018; 67:901–4. <https://doi.org/10.1093/sysbio/syy032> PMID: 29718447
104. Faith DP. Conservation evaluation and phylogenetic diversity. *Biological Conservation*. 1992; 61:1–10. [https://doi.org/10.1016/0006-3207\(92\)91201-3](https://doi.org/10.1016/0006-3207(92)91201-3)