



HAL
open science

Data integration uncovers the metabolic bases of phenotypic variation in yeast

Marianyela Sabina Petrizzelli, Dominique de Vienne, Thibault Nidelet, Camille Noûs, Christine Dillmann

► To cite this version:

Marianyela Sabina Petrizzelli, Dominique de Vienne, Thibault Nidelet, Camille Noûs, Christine Dillmann. Data integration uncovers the metabolic bases of phenotypic variation in yeast. PLoS Computational Biology, 2021, 17 (7), 10.1371/journal.pcbi.1009157 . hal-03328521

HAL Id: hal-03328521

<https://hal.inrae.fr/hal-03328521>

Submitted on 30 Aug 2021

HAL is a multi-disciplinary open access archive for the deposit and dissemination of scientific research documents, whether they are published or not. The documents may come from teaching and research institutions in France or abroad, or from public or private research centers.

L'archive ouverte pluridisciplinaire **HAL**, est destinée au dépôt et à la diffusion de documents scientifiques de niveau recherche, publiés ou non, émanant des établissements d'enseignement et de recherche français ou étrangers, des laboratoires publics ou privés.



Distributed under a Creative Commons Attribution 4.0 International License

RESEARCH ARTICLE

Data integration uncovers the metabolic bases of phenotypic variation in yeast

Marianyela Sabina Petrizzelli^{1,2,3,4*}, Dominique de Vienne¹, Thibault Nidelet⁵, Camille Noûs⁶, Christine Dillmann¹

1 Université Paris-Saclay, INRAE, CNRS, AgroParisTech, GQE–Le Moulon, Gif-sur-Yvette, France, **2** Institut Curie, PSL Research University, Paris, France, **3** INSERM, U900, Paris, France, **4** CBIO-Centre for Computational Biology, MINES ParisTech, PSL Research University, Paris, France, **5** SPO, INRAE, Montpellier SupAgro, Université de Montpellier, Montpellier, France, **6** Laboratoire Cogitamus, France

* marianyela.petrizzelli@curie.fr

Abstract

The relationship between different levels of integration is a key feature for understanding the genotype-phenotype map. Here, we describe a novel method of integrated data analysis that incorporates protein abundance data into constraint-based modeling to elucidate the biological mechanisms underlying phenotypic variation. Specifically, we studied yeast genetic diversity at three levels of phenotypic complexity in a population of yeast obtained by pairwise crosses of eleven strains belonging to two species, *Saccharomyces cerevisiae* and *S. uvarum*. The data included protein abundances, integrated traits (life-history/fermentation) and computational estimates of metabolic fluxes. Results highlighted that the negative correlation between production traits such as population carrying capacity (K) and traits associated with growth and fermentation rates (J_{\max}) is explained by a differential usage of energy production pathways: a high K was associated with high TCA fluxes, while a high J_{\max} was associated with high glycolytic fluxes. Enrichment analysis of protein sets confirmed our results.

This powerful approach allowed us to identify the molecular and metabolic bases of integrated trait variation, and therefore has a broad applicability domain.

OPEN ACCESS

Citation: Petrizzelli MS, de Vienne D, Nidelet T, Noûs C, Dillmann C (2021) Data integration uncovers the metabolic bases of phenotypic variation in yeast. PLoS Comput Biol 17(7): e1009157. <https://doi.org/10.1371/journal.pcbi.1009157>

Editor: Christoph Kaleta, Christian Albrechts, Universitat zu Kiel, GERMANY

Received: January 25, 2021

Accepted: June 7, 2021

Published: July 15, 2021

Peer Review History: PLOS recognizes the benefits of transparency in the peer review process; therefore, we enable the publication of all of the content of peer review and author responses alongside final, published articles. The editorial history of this article is available here: <https://doi.org/10.1371/journal.pcbi.1009157>

Copyright: © 2021 Petrizzelli et al. This is an open access article distributed under the terms of the [Creative Commons Attribution License](https://creativecommons.org/licenses/by/4.0/), which permits unrestricted use, distribution, and reproduction in any medium, provided the original author and source are credited.

Data Availability Statement: The datasets and computer codes produced in this study are available at [textit\(figshare\)](https://textit.figshare.com/), DOI:[10.6084/m9.figshare.10266332](https://doi.org/10.6084/m9.figshare.10266332).

Author summary

The integration of data at different levels of cellular organization is an important goal in computational biology for understanding the way the genotypic variation translates into phenotypic variation. Novel profiling technologies and accurate high-throughput phenotyping now allows genomic, transcriptomic, metabolic and proteomic characterization of a large number of individuals under various environmental conditions. However, the metabolic fluxes remain difficult to measure. In this work, we take advantage of recent advances in genome-scale functional annotation and constraint-based metabolic modeling to provide a mathematical framework that allows to estimate internal cellular fluxes from protein abundances and elucidate the biological mechanisms underlying phenotypic variation. Applied to yeast as a model system, this approach highlights that the negative

Funding: MSP was funded with a public Ph.D. grant from the French National Research Agency (ANR) as part of the Investissement d'Avenir program, through the Initiative Doctorale Interdisciplinaire (IDI) 2015 project funded by the Initiative d'Excellence (IDEX) Paris-Saclay, ANR-11-IDEX-0003-02. The funders had no role in study design, data collection and analysis, decision to publish, or preparation of the manuscript.

Competing interests: The authors have declared that no competing interests exist.

correlation between production traits such as maximum population size and growth and fermentation traits is explained by a differential usage of energy production pathways. The ability to identify molecular and metabolic bases of the variation of integrated traits through population studies has a broad applicability domain.

Introduction

Phenotypic diversity within the living world results from billions of years of evolution. Most evolutionary pressures like mutation, random genetic drift, migration and recombination shape phenotypic diversity by directly changing the genetic composition of populations. The effects of selection are more difficult to predict because fitness is determined by phenotype, which results from a complex interaction between genotype and the environment [1]. An additional layer of complexity results from the fact that life-history traits [2] are the results of processes that occur at the cellular level. During the last decades, there has been a growing interest for a better understanding in evolutionary biology of the so-called genotype-phenotype map (see *e.g.* [3]). In parallel, novel profiling technologies and accurate high-throughput phenotyping strategies have led to the genome-scale characterization of genomic sequences as well as to the quantification of transcriptomic, proteomic and metabolomic data at the individual level. Linking cellular processes to high-level phenotypic traits is becoming a new discipline in Biology, known as integrative biology.

Unicellular organisms are the model species of choice for integrative biology because most of their integrated traits are the direct product of cell metabolism, without needing to take into account the complexity of tissues and organs as in multicellular organisms. Schematically, cells sense the environment and transfer the information via signal transduction chains that interact with gene regulation networks. Gene regulatory networks modulate transcription, translation and post-translational modifications in response to environmental signals, resulting in variations in protein abundances. Differential abundances of enzymatic proteins affect the fluxes of matter and energy that are related to phenotypic traits, including life-history traits and fitness. Thus, in unicellular organisms, five integration levels are usually considered: genomic, transcriptomic, proteomic (including post-translational modifications), metabolic and cellular. The last level is the most integrated, and it encompasses a variety of traits that are more or less related to fitness.

While technical progress has now allowed for genomic, transcriptomic, proteomic and trait levels to be readily measurable in a high number of individuals, metabolic fluxes are still difficult to measure. Although Metabolic Flux Analysis, based on Nuclear Magnetic Resonance (NMR) and differential usage of radioactive isotopes, is powerful [4], it remains low throughput and cannot be applied to a high number of individuals. Technical developments in mass spectrometry have boosted metabolomics [5] by enabling the characterization of the metabolome. However, the technique still suffers from standardization difficulties [6].

Taking advantage of recent advancements in genome-scale functional annotation, constraint-based metabolic models provide a mathematical framework that allows us to predict internal cellular fluxes from *a priori* knowledge of thermodynamic constraints on individual enzymatic reactions, steady state hypotheses and the genome-scale stoichiometry matrix of all metabolic reactions. The idea is to explore system's properties at a steady state, during which internal metabolites stay at a constant concentration while exchange fluxes are constant and correspond to a constant import/export rate. However, because the number of reactions is higher than the number of metabolites, the system has an infinite number of solutions. Flux

Balance Analysis [7, 8] consists in choosing, among all possible solutions, the solution that maximizes the biomass pseudo-flux that represents the conversion rate of biomass precursors into biomass. This method is questionable because evolution is not always based on optimization principles [9]. However, it has been shown to be relevant in some cases, such as chemostat cultures of *Escherichia coli* [10]. Data-driven methods have also been proposed, which consist in choosing the most likely solution given transcriptomic, proteomic or metabolomic data (reviewed in [11]). Among all available methods, the one from [12] seems promising for studies at the population/species level. It is based on the assumption that, at the genome scale, fluxes should covary with enzymatic protein abundances. Unlike the GIMME method [13], it takes into account quantitative variations instead of presence/absence. It does not make any assumptions about the shape of the flux-enzyme relationship like in IOMA [14]. Moreover, it does not require heavy model curation nor absolute quantification of protein abundances like in Resource Balance Analysis [15, 16]. In [12], the only assumption is the expectation that there should be some correlation at the population level between fluxes and enzyme abundances. When considering quantitative proteomic data, which partly account for post-translational regulations, such assumption sounds biologically relevant. Irrespective of the method, comparisons rely on the probability distribution of the solution space, which is analytically intractable because of the stoichiometry constraints. Recently, [17] have proposed a Bayesian probabilistic method to characterize the solution space that is much faster than the classical Hit and Run algorithm [18] and allows for analyses at both the genome and population scale.

The HeterosYeast project investigated the molecular bases of heterosis in yeast at two different levels of integration: the proteomic level and the integrated trait level [19–21]. A diallel study of two yeast species involved in wine fermentation was carried out and the hybrid and parental strains were monitored during fermentation of grape juice at two temperatures. Integrated and proteomic traits were analyzed. In brief, the most important findings were: homeostasis of the interspecific hybrids observed at the trait level [21] and the predominance of interspecific heterosis at the proteomic level [20]. A closer analysis of genetic variance components confirmed that high-level phenotypes tended to exhibit higher additive genetic variance and lower interaction variance than proteomic traits [22]. However, previous studies on the HeterosYeast data set failed to find a clear link between variation at the trait level and variation at the proteomic level.

Given the important genomic resources in yeast [23], a number of curated genome-scale metabolic models are now available [24]. Among these, the DynamoYeast model [25] describes central carbon metabolism in yeast. It is small enough (70 reactions and 60 metabolites) to remain tractable, and has been tested against experimental data [26].

The availability of the HeterosYeast dataset, combined with a curated metabolic model of central carbon metabolism in yeast and a probabilistic approach to explore the solution space, encouraged us to integrate experimental proteomic data into the metabolic model in order to predict unobserved metabolic fluxes. We used these predicted fluxes to bridge the gap between proteomic data and integrated traits, and better understand the metabolic basis of life-history trait variation. This approach allowed us to show that the negative relationship between growth/fermentation traits and production traits is accounted for by a differential usage of the energy production pathway.

Results

The HeterosYeast dataset provided valuable observations on the genetic diversity of yeast strains involved in the wine-making process at different levels of cellular organization, *i.e.* phenotypic traits related to life-history or fermentation [21], and quantitative proteomic data [20].

All traits were estimated or measured at 18°C and 26°C on a half-diallel design comprising 7 strains of *S. cerevisiae* and 4 strains of *S. uvarum*, with a total of 127 strain × temperature combinations.

In order to access an intermediate level of integration between protein abundances and traits, we used the DynamoYeast model, a curated Constraint-Based Model (CBM) of central carbon metabolism in yeast consisting of 70 reactions and 60 metabolites [25] (Fig 1). In the DynamoYeast model, the only entry is glucose, and the model does not take into account the complexity of metabolism like the recycling of amino-acids or extra-cellular TCA supplements. However, it was shown to accurately predict growth on complex medium like grape must [26]. Using gene-protein-reaction associations, enzymatic proteins and protein complexes were linked to the reactions of the CBM. Among the 70 enzymatic proteins and protein complexes, the abundances of 33 of them were retrieved from the dataset of 615 protein abundances quantified in the HeterosYeast project.

Thus, the metabolic fluxes that best matched the observed patterns of variation of enzymatic protein abundance were retained (see [Material and methods](#)). In brief, the strategy we proposed was: (i) to characterize the feasible solution space of the DynamoYeast model, L , through the posterior density distribution of the fluxes given by the Expectation Propagation algorithm (hereafter denoted EP, [17]); (ii) to select a unique solution through minimization of the objective function that measures the Euclidean distance between observed enzyme abundances and reaction rates (Z , Eq 11 in [Material and methods](#)).

Below, we first describe the method and its validation using simulated datasets. Then, we analyze the relationship between the different integration levels, using the HeterosYeast dataset and the predicted fluxes of central carbon metabolism.

Sampling the feasible solution space with the expectation propagation algorithm

Sampling points from the feasible solution space L can be performed directly from the posterior truncated multivariate normal distribution of the fluxes. We compared the Hit and Run (HR) algorithm [27] with the EP posterior distribution of the fluxes to test the goodness of prediction of the EP algorithm [17] on the DynamoYeast posterior distribution.

We first characterized the feasible space of solutions L of fluxes from the DynamosYeast model from both methods (S1 File). The means of the posterior density distribution of fluxes obtained by the HR algorithm (burning length equal to 10^6 and a jump of 0.5) for 10^6 samples were well correlated with the means estimated with the EP algorithm ($r_{mean} = 0.98$), with moderate correlations between the variances ($r_{var} = 0.4$). The correlation between means and variances increased when considering 10^7 samples ($r_{mean} = 1$, $r_{var} = 0.93$) (S1 and S2 Figs). We further observed that the EP algorithm well predicts the sampled space of solutions (S1 Fig) and the variance-covariance matrix (S3 Fig) between the DynamoYeast fluxes.

These results are similar to the ones obtained by [17]. Therefore, we decided to use the EP algorithm to sample the feasible solution space of the CBM.

Protein abundances are good predictors of the initial set of metabolic fluxes

Computer simulations were performed to assess the goodness of prediction of the proposed method, as detailed in section Testing the prediction algorithm. The two main parameters that were tested were: (i) the number of sampled points N_s in L ; (ii) the number of observed proteins N^{obs} to be included in the objective function Z (Eq 11 in [Material and methods](#)). To this end, a vector of flux values, $\mathbf{v}^{initial}$, was first sampled from the feasible solution space of the

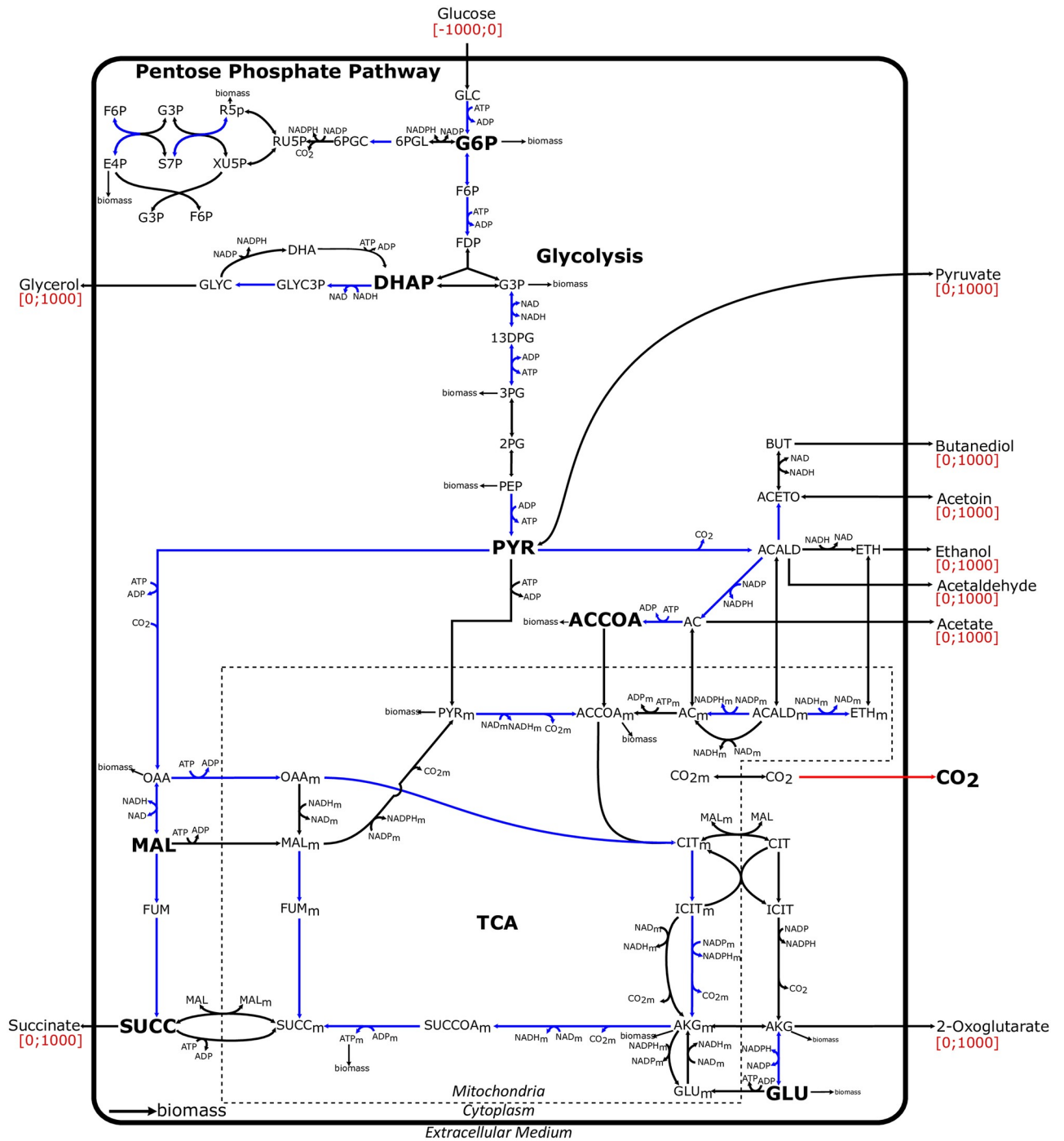


Fig 1. Representation of the DynamoYeast model of central carbon metabolism in *S. cerevisiae*. Metabolites are in black. Constraints on exchange fluxes are indicated in red between square brackets and correspond to fermentation, with glucose as the only input flux. The reaction color code is as follows: (i) in red, the experimentally measured CO₂ exchange flux; (ii) in blue, the reactions associated with enzymatic proteins quantified in this study; (iii) in black, the other reactions present in the DynamoYeast model. The list of the full metabolite names is in S1 Table.

<https://doi.org/10.1371/journal.pcbi.1009157.g001>

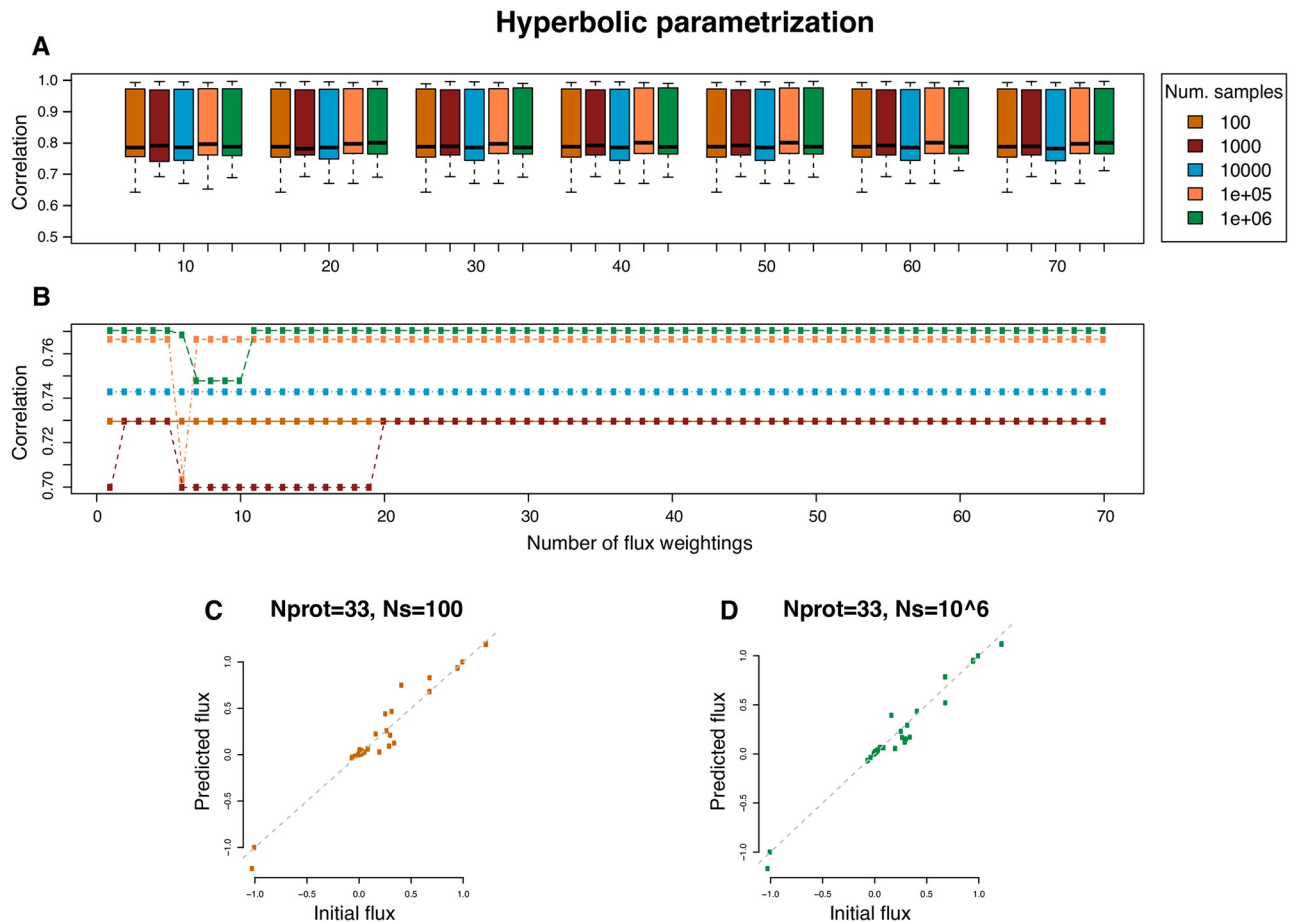


Fig 2. Correlation between initial and predicted fluxes in simulated datasets using the DynamoYeast model. Enzymatic protein abundances were expressed in terms of a hyperbolic function of the initial fluxes using Eq 12. Colors indicate the number of points N_s that were sampled in solution space L . **A.** Boxplot representation as a function of the number of observed proteins N^{obs} , from 10 to 70, in increments of ten. Each box represents 1,000 simulations. **B.** Observed changes in the correlation during a single simulation run when the number of observed proteins was increased in increments of 1, from 1 to 70 (same color code as in **A**). The relationship between initial and predicted fluxes shown for one simulation with $N^{\text{obs}} = 33$ (matching the 33 enzymes of the HeterosYeast dataset) and $N_s = 100$ (**C**), and $N^{\text{obs}} = 33$ and $N_s = 10^6$ (**D**).

<https://doi.org/10.1371/journal.pcbi.1009157.g002>

DynamoYeast model. We then computed protein abundances by assuming different functional relationships between fluxes and enzymatic proteins, and we used the proposed method to predict metabolic flux values, $v^{\text{predicted}}$. Different *a priori* functional relationships between fluxes and enzymatic proteins led to similar results. Simulations showed that minimization of Z led to a high correlation between v^{initial} and $v^{\text{predicted}}$ (Fig 2A). Correlations ranged from 0.65 to 0.99 (p-value < 0.05). By increasing the number of sampled points, N_s in L , the mean correlation slightly increased and its variance decreased. The number of observed protein abundances N^{obs} had a more complex influence on the accuracy of the predictions. When increasing N^{obs} , the correlation between v^{initial} and $v^{\text{predicted}}$ either increased, decreased or stayed constant, as illustrated in Fig 2B. However, the order of magnitude of the variation was small, and the correlation tended to be more stable for high N_s value (Fig 2B). In particular, the stability is reached when the number of observed proteins exceeds the size of the null space ($\text{Ker}(S) = 16$), *i.e.* the number of degrees of freedom of the DynamoYeast metabolic model.

When considering the actual set of enzyme abundances that were matched between the HeterosYeast proteomic data and the DynamoYeast CBM ($N^{\text{obs}} = 33$), we observed a high

correlation between v^{initial} and $v^{\text{predicted}}$. This correlation increased when increasing the number of sampled points (see for example Fig 2C and 2D). We also checked that the 33 reactions were distributed over the modules of the metabolic reaction tree [28] (see Testing the CBM coverage with the observed proteomic dataset), as shown in S4 Fig. Altogether, we considered that our algorithm was efficient for predicting unobserved fluxes from enzyme abundances, given the correlation values obtained through simulations. More generally, simulations provide a method to check for the good coverage of the metabolic model with observations, without needing to predict elementary modes, which becomes computationally heavy as the size of the metabolic model increases.

Predicting unobserved fluxes from the observed variation in protein abundances

The HeterosYeast proteomic data were used in the context of the DynamoYeast model of central carbon metabolism in yeast. In addition, for each strain \times temperature combination, the observed CO₂ release rate was used as an additional constraint in the form of *a priori* knowledge to delimit the feasible solution space L . We sampled $N_s = 10^6$ points in L to select a unique solution that minimizes the Euclidean distance between fluxes and enzyme abundances. As a result, we predicted 69 unobserved fluxes in the CBM for each of the 127 strain \times temperature combinations. Statistical approaches were then used to investigate the variation components and the structure of the new dataset D consisting of 615 protein abundances (\mathbf{E}), 70 metabolic fluxes (\mathbf{V}) and 28 fermentation and life-history traits (\mathbf{T}):

$$D = (\mathbf{E}, \mathbf{V}, \mathbf{T})$$

Patterns of variation depend on the integration level

The 127 observations in the new dataset D had a specific structure. There were 7 parental strains (*S.c.*) and 21 intraspecific hybrids from *S. cerevisiae* (*S.c.* \times *S.c.*), 4 parental strains (*S.u.*) and 6 intraspecific hybrids from *S. uvarum* (*S.u.* \times *S.u.*), and 28 interspecific hybrids (*S.c.* \times *S.u.*). All strains were observed during alcoholic fermentation of wine grape juice at two temperatures, 18°C and 26°C [21].

To better understand the patterns of variation at each integration level, Principal Component Analyses (PCA) were performed for each type of trait separately. Results are presented in Fig 3, where strains are identified by species, type of cross (intraspecific hybrid, interspecific hybrid or parental strain) and temperature. The first PCA components accounted for 20%, 23% and 27% of the total variation and the second for 14%, 18% and 19% of the total variation for protein abundances, metabolic fluxes and fermentation/life-history traits, respectively (Fig 3A, 3B and 3C). Different integration levels displayed different patterns of phenotypic diversity.

At the proteomic level (\mathbf{E}), the first two PCA axes contributed to both differences between temperatures and between species and type of cross. Heterosis was observed for the three types of hybrids at both temperatures. First, *S.u.* \times *S.u.* hybrids were clearly differentiated from their *S.u.* parents. Second, *S.c.* \times *S.u.* interspecific hybrids were closer to their *S.c.* parents than their *S.u.* parents. Finally, *S.c.* \times *S.c.* hybrids were close to their *S.c.* parents, but the range of variation between *S.c.* \times *S.c.* hybrids was greater than between parental strains. Altogether, protein abundance in a hybrid strain cannot be predicted by the mean of its parental values.

At the trait level (\mathbf{T}), we observed a high temperature effect, with axis 1 (27% of the variation) clearly separating the strains that were grown at 26°C from those that were grown at 18°C. At 26°C, strains were characterized by high growth rates (r), high CO₂ fluxes (J_{max} and

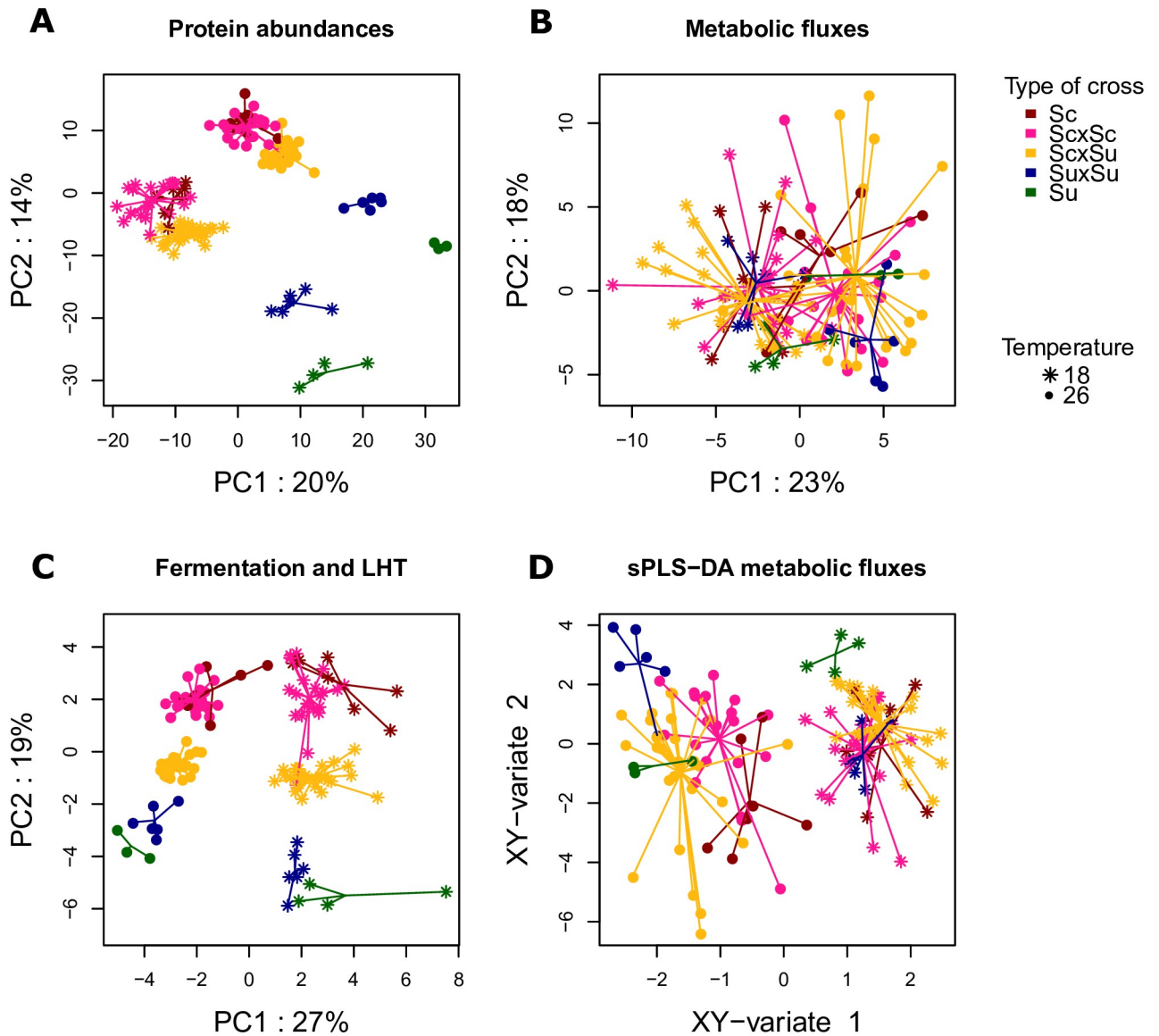


Fig 3. Principal Component Analysis and sparse Partial Least Square-Discriminant Analysis. PCA for protein abundances (A), metabolic fluxes (B) and fermentation/life-history traits (C). sPLS-DA for metabolic fluxes (D). Observations are represented on the first two PCA axes (sPLS-DA, respectively). Each dot corresponds to a strain \times temperature combination. Different types of dots correspond to different temperatures, while the type of cross is color-coded. Segments join the data points to the centroid of the group (cross \times temperature) to which they belong.

<https://doi.org/10.1371/journal.pcbi.1009157.g003>

V_{max}), high *Hexanol* and *Decanoic acid*, a low carrying capacity (K) and short fermentation times (A_{time} , t_{lag} , t_{-75} , t_{-45} , S5 Fig). At 18°C, strains were characterized by low growth rates and low CO_2 fluxes, a high K and long fermentation times (S5 Fig). These two groups of traits mostly varied with temperature, although some differences between strains were observed within rather than between types of cross, especially at 18°C. At 26°C, *S.u.* strains perform slightly better than *S.c.* strains (higher growth rates, faster fermentation). The types of cross were clearly separated along PCA axis 2. Heterosis was observed at the trait level in intra-specific hybrids. However, interspecific hybrids seemed to be in-between the two parental strains. Traits that explain the differences between the observations along axis 2 were cell size ($Size-t-N_{max}$) and *Ethanol* at the end of fermentation (positively correlated with axis 2), aroma

production at the end of fermentation, as well as *Sugar.Ethanol.Yield* (negatively correlated) (S5 Fig). Note that these traits were not influenced by temperature. Hence, at the trait level, we observed differences between yeast species for traits related to aroma production that were not influenced by temperature. Most fermentation and life-history traits showed a strong temperature effect, large differences between strains within a type of cross, and weak heterosis.

At the flux level (V), temperature separated the observations on axis 1, but both axis 1 and axis 2 distinguished strains independently of their origin. Notice however that the variation range in hybrids was greater than in the parental strains, indicating differences between inbred and hybrid strains. Altogether, central carbon metabolic fluxes were influenced by temperature and showed strong differences between strains that were not related to the type of cross or the parental species. Sparse Partial Least Squares Discriminant Analysis (sPLS-DA) was performed on metabolic fluxes in order to select the main features that best characterize the species \times temperature combinations (Fig 3D). As previously, the first axis distinguished strains grown at different temperatures. Six fluxes contributed to the first axis of the sPLS-DA: CO₂, ethanol, pyruvate decarboxylase, alcohol dehydrogenase, 6-phosphogluconolactonase and phosphogluconate dehydrogenase fluxes (S6 Fig). All were negatively correlated with axis 1 and were involved in fermentation. This shows that fermentation was more efficient at 26°C. The second axis distinguished inbred strains from intraspecific hybrids with a genotype \times temperature interaction: both *S.u.* \times *S.u.* and *S.c.* \times *S.c.* hybrids had higher coordinates than their parents at 26°C, whereas *S.u.* \times *S.u.* had lower coordinates than their parents at 18°C, and *S.c.* \times *S.c.* hybrids were confounded with their parental strains. Interspecific hybrids were characterized by a wide variation range at both temperatures. Fluxes that contributed to axis 2 were mainly mitochondrial fluxes. Mitochondrial acetyl-CoA formation, mitochondrial citrate synthase, mitochondrial aconitate hydratase, mitochondrial isocitrate dehydrogenase (NAD⁺) and mitochondrial transport fluxes of pyruvate, oxaloacetate and acetaldehyde were negatively correlated with the second axis, while mitochondrial transport of 2-oxodicarboxylate, ethanol and CO₂ fluxes were positively correlated (S6 Fig).

In summary, we found at each integration level a strong temperature effect, large differences between strains, and evidence for heterosis, *i.e.* differences between hybrids and mid-parent values. However, patterns differed between the proteomic and the most integrated level. At the proteomic level, proteins involved in differences between strains were the same as the ones involved in differences between species and between temperatures. At the flux level, there were few differences between species. Differences between temperatures were associated with enzymatic reactions related to fermentation, while differences between strains were associated with enzymatic reactions that were either involved in fermentation, or in the part of the TCA cycle that takes place in mitochondria. At the trait level, differences between temperatures were associated with differences in growth and fermentation traits, which were relatively conserved within species but showed between-strain variation. Differences between species mostly concerned volatile compounds that are produced by secondary metabolism at the end of fermentation.

Fermentation and life-history traits are associated with different metabolic pathways of carbon metabolism in yeast

Regularized Canonical Correlation Analysis (rCCA) was performed to investigate the correlation between metabolic fluxes and fermentation/life-history traits (Fig 4). Fermentation and life-history traits could be divided into two main groups showing contrasting profiles. The first group consisted of traits that clustered with the carrying capacity, *K*. They were negatively correlated with fluxes involved in the glycolysis, ethanol synthesis and pentose phosphate

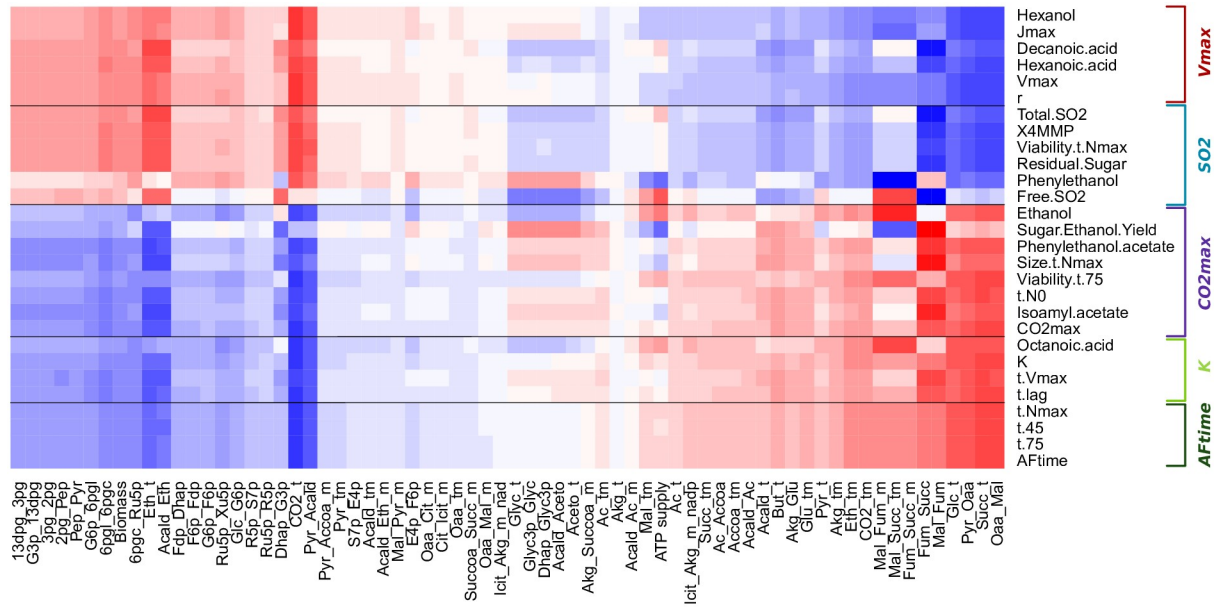


Fig 4. Regularized Canonical Correlation Analysis of metabolic fluxes and fermentation/life-history traits. Penalization parameters were tuned through a leave-one-out cross-validation method on a 1000 × 1000 grid between 0.0001 and 1 ($\lambda_1 = 0.8, \lambda_2 = 0.0001$). Canonical correlation values between metabolic fluxes and fermentation/life-history traits are represented as a gradient of colors from blue (−1) to red (+1). Metabolic fluxes (columns) and fermentation/life-history traits (rows) were clustered using the *hclust* method. Flux names are encoded as abbreviations of the substrate and the product of the reaction connected by “_”. The five groups defined by fermentation and life-history traits are shown on the right.

<https://doi.org/10.1371/journal.pcbi.1009157.g004>

pathways, and positively correlated with fluxes in the TCA reductive branch. By contrast, the second group consisted of traits that clustered with the intrinsic growth rate, *r*, and were positively correlated with fluxes involved in the glycolysis, ethanol synthesis and pentose phosphate pathways and negatively correlated with fluxes in the TCA reductive branch. Consistent with these results, the *biomass* pseudo-flux was positively correlated with *r* and negatively correlated with *K*.

When looking at the flux correlation structure described in Fig 4, we see the opposition between glycolytic fluxes and TCA fluxes. High growth rates and CO₂ fluxes (*J*_{max}, *V*_{max}) and correspondingly fast fermentation (short fermentation times) seem to be associated with a central carbon metabolism oriented towards fermentation, while high carrying capacity, low growth rate and slow fermentation seem to be associated with a central carbon metabolism oriented towards the production of downstream metabolites (succinate, pyruvate, acetate, acetaldehyde and butanediol).

The *K* group could be divided into three subgroups, based mainly on the correlation between traits and the glycerol synthesis and acetaldehyde fluxes: **Aftime**, **K** and **CO₂max** (subgroups designated by the name of the main trait in boldface). The **Aftime** subgroup showed a slightly negative correlation, the **K** subgroup a slightly positive correlation and the **CO₂max** subgroup a positive correlation. **Aftime** grouped most traits correlated with the duration of fermentation, *AFTime*, *t*-45, *t*-75, *t*-*N*_{max}; **K** grouped traits measuring the lag time and the beginning of fermentation (*t*-lag, *t*-*V*_{max}), the carrying capacity (*K*) and the concentration of *Octanoic acid* (a fatty acid) at the end of fermentation, while **CO₂max** grouped traits correlated with fermentation products (*total CO₂*, *Ethanol* and *Sugar.Ethanol.Yield*), two volatile esters, *Isoamyl acetate* and *Phenyl-2-ethanol acetate*, as well as cell size and cell viability measured close to the end of fermentation, and *t*-*N*₀.

Similarly, within the r group we distinguished two clusters of traits: **SO₂** and **Vmax**. **SO₂** grouped basic enological parameters measured at the end of fermentation (*total* and *free SO₂*, *residual sugar*), cell viability measured once carrying capacity is reached (*Viability-t-N_{max}*), and two volatile compounds *Phenyl-2-ethanol* (alcohol) and *4-methyl-4-mercaptopentan-2-one* (*X4MMP*, thiol). **Vmax** grouped traits that correlated with V_{max} and r , such as J_{max} and the amount of *hexanol* (alcohol) and *hexanoic* and *decanoic acids* (fatty-acid) that were quantified at the end of fermentation (Table 1).

In summary, we were able to associate fermentation and life-history traits with metabolic fluxes based on their correlation patterns. In particular, we found that the negative correlation between r and K is explained by a different pathway usage of the central carbon metabolism. A high r and a low K are associated with glycolysis and fermentation, while a low r and a high K are associated with the TCA cycle and respiration.

Table 1. Group name, trait description and abbreviation for each fermentation/life-history trait analyzed in this study. Traits are grouped following the correlation structure obtained by rCCA (Fig 4).

Group Name	Trait	Abbreviation
Aftime	Duration of fermentation	<i>Aftime</i>
	Time at which the carrying capacity is reached	<i>t-N_{max}</i>
	Fermentation time at which 45 gL ⁻¹ of CO ₂ was released, out of the fermentation lag-phase	<i>t-45</i>
	Fermentation time at which 75 gL ⁻¹ of CO ₂ was released, out of the fermentation lag-phase	<i>t-75</i>
K	Carrying capacity	<i>K</i>
	Fatty acid	<i>Octanoic acid</i>
	Time to reach the inflection point out of the fermentation lag-phase	<i>t-V_{max}</i>
	Fermentation lag-phase	<i>t-lag</i>
CO2max	Total amount of CO ₂ released at the end of the fermentation	<i>CO_{2max}</i>
	Average cell size at <i>t-N_{max}</i>	<i>Size-t-N_{max}</i>
	Percentage of living cells at <i>t-75</i>	<i>Viability-t-75</i>
	Growth lag-phase	<i>t-N₀</i>
	Ratio between the amount of metabolized sugar and the amount of released ethanol	<i>Sugar.Ethanol.Yield</i>
	Basic enological parameter	<i>Ethanol</i>
	Ester	<i>Isoamyl acetate</i>
	Ester	<i>Phenylethanol. acetate</i>
SO2	Basic enological parameter	<i>Total SO₂</i>
	Basic enological parameter	<i>Free SO₂</i>
	Basic enological parameter	<i>Residual Sugar</i>
	Thiol	<i>X4MMP</i>
	Alcohol	<i>Phenylethanol</i>
	Percentage of living cells at <i>t-N_{max}</i>	<i>Viability-t-N_{max}</i>
Vmax	Maximum CO ₂ release rate	<i>V_{max}</i>
	Maximum CO ₂ production rate divided by the estimated cell concentration	<i>J_{max}</i>
	Growth rate	<i>r</i>
	Alcohol	<i>Hexanol</i>
	Fatty acid	<i>Decanoic acid</i>
	Fatty acid	<i>Hexanoic acid</i>

<https://doi.org/10.1371/journal.pcbi.1009157.t001>

Metabolic bases of phenotypic trait variation in yeast

In order to confirm the association between integrated trait variation and the differential usage of central carbon metabolism, we identified proteins involved in trait patterning that were not included in the DynamoYeast model, as observed from the correlations between traits and fluxes (see section Statistical analysis). We performed a Linear Discriminant Analysis on the correlation matrix between the **T** traits and the **E** proteins using as discriminant features the five groups of fermentation and life-history traits described above. Linear Discriminant Analysis clearly separated the five trait categories along the first axis, which explains 99% of the total variation (Fig 5). **AFtime** and **K** traits were close to each other, and had positive coordinates on LDA1; **Vmax** had high negative coordinates, **SO₂** had a slightly negative mean and **CO₂max** had a slightly positive mean on LDA1. Given the high discriminative power of LDA1, it is clear that proteins that were positively or negatively correlated with LDA1 participate in the differentiation of **AFtime** and **Vmax** trait groups.

Functional analysis of proteins that best correlate with the first axis of the LDA was performed on the group of proteins with a correlation of 0.85 in the positive and in the negative direction. Pearson’s chi square test of enrichment showed that the group of proteins that were negatively correlated with the first axis was enriched in proteins linked to protein fate, cytoskeleton, detoxification, growth and death but also to the fermentation, glycolysis and phosphate pathways. The group of proteins that were positively correlated with LDA1 was enriched in proteins linked to energy conversion, nitrogen and sulfur pathways, metabolism,

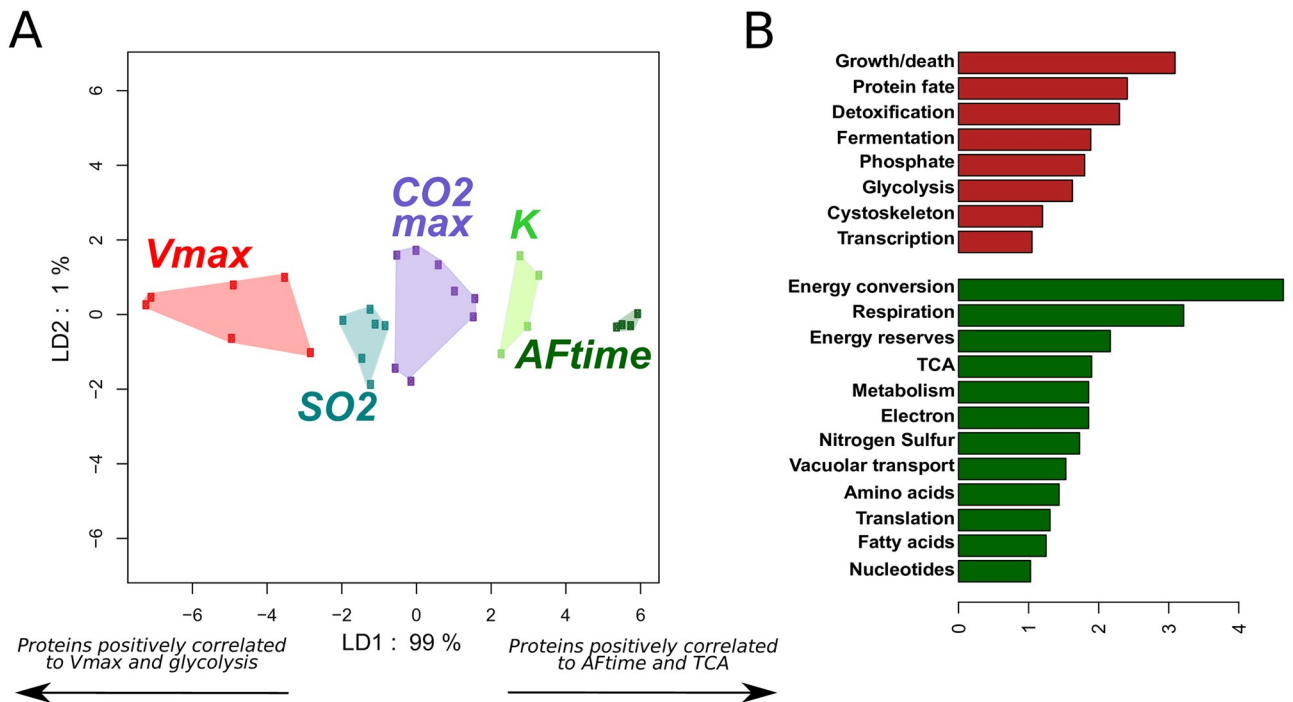


Fig 5. Linear Discriminant Analysis of protein abundances. A. Projection of the 28 fermentation/life-history traits onto the first two axes of a Linear Discriminant Analysis of protein abundances. Groups of traits were defined from their correlation with central carbon metabolism fluxes. Each dot corresponds to one fermentation or life-history trait. Colors correspond to groups of traits, which are named after one representative trait. The results confirm the structure of fermentation and life-history traits and reveal two groups of traits with antagonistic proteomic patterns: the **AFtime** group and the **Vmax** group. B. Functional enrichment categories of proteins that are positively (red) and negatively (green) correlated with the first LD1 axis. The groups of proteins were defined taking a positive (resp. negative) correlation threshold of 0.85 (resp. -0.85). The bars represent the proportion of proteins positively/negatively correlated to the LD axis belonging to a functional category divided by the proportion of proteins from the same category found in the MIPS database. Only the categories for which this value is higher than 1 are shown.

<https://doi.org/10.1371/journal.pcbi.1009157.g005>

energy reserves, electron transport, TCA and respiration. This result was represented as a barplot in Fig 5.

In order to evaluate the interest of considering the flux level as an intermediate level between proteins and integrated traits, we run the same analysis by discarding the flux levels. We performed a rCCA to investigate the correlations between protein abundances and fermentation/life-history traits, and we identified seven groups of traits. We retrieved the **Aftime**, **CO2max** and **K** groups previously identified, but **Jmax** no longer belonged to the **Vmax** group, and trait related to the Phenylethanol pathway differentiate themselves from the **SO2** group. This time, the first two axes of the Linear Discriminant Analysis were needed to differentiate the seven groups of traits, with the first axis explaining only 79% of the total inter-groups variation (S7 Fig). While this pattern of variation clearly better illustrates the complexity of cell functioning and the importance of all metabolic reactions that fall outside the central carbon pathway, it fails to capture proteins directly connected to central carbon metabolism. On the contrary, the approach that consists in (i) defining groups of traits on the basis of their correlation with central carbon metabolic fluxes and (ii) seeking for additional proteins, outside central carbon metabolism, that differentiate the best between groups of traits, allowed us to track additional pathways that link central carbon metabolism to the variation of more integrated traits.

In conclusion, the association between trait variation and central carbon metabolism observed at the flux level is confirmed by the proteomic analysis. Proteins that covary with traits of the **Vmax** group and with glycolytic and fermentation fluxes are involved not only in glycolysis and fermentation, but also in protein synthesis and degradation (protein fate) and in cytoskeleton formation, which can be associated with cell division. Proteins that covary with traits of the **Aftime** group and with the TCA cycle and respiration fluxes are involved not only in the TCA cycle and respiration, but also in electron transport, energy conversion and nitrogen and sulfur metabolism.

Discussion

We applied cutting-edge methods of data integration to an original yeast dataset. The HeteroYeast dataset comprised quantitative proteomic data as well as fermentation and life-history traits measured during wine fermentation on a range of strains from two yeast species. The objective was to integrate information at different levels of cellular organization (proteomic and metabolic fluxes) to better understand the metabolic bases of phenotypic variation in yeast, in particular life-history traits related to fitness. The key point of this study was to incorporate proteomic data in a constraint-based metabolic model to estimate the values of unobserved metabolic fluxes. Using a combination of multivariate analyses of heterogeneous high-dimensional datasets, we were able to show that the metabolic flux level retains information that is not directly interpretable at the proteomic or trait level. In particular, we showed that the negative correlation between traits associated with population growth rate and traits associated with maximum population size (carrying capacity) could be explained by a differential usage of central carbon metabolism, in this case fermentation *versus* TCA cycle.

Functional genome annotations, coupled with current knowledge in biochemistry, now allow cell metabolism to be described at the genome scale, using constraint-based metabolic models that take into account the stoichiometry of each reaction and incorporate thermodynamic constraints [29]. Without any *a priori* knowledge, the number of steady-state solutions for reaction rates is infinite; however, this number can be reduced by integrating observations. Three types of experimental data can be used: (i) exchange metabolic fluxes; (ii) metabolite input/output rates and (iii) protein abundances. External metabolic fluxes and metabolite

input/output rates can be used directly in constraint-based models to reduce the feasible solution space, L (Eq 5 and inequality Eq 6) under the steady-state assumption.

Protein abundances, linked to the metabolic fluxes considered in the model through a gene-protein-reaction (GPR) association, carry information regarding network functioning and the state of the metabolic network at a given time and under specific conditions. Following [12], we used protein abundance profiles to find the set of metabolic fluxes that minimized the Euclidean distance between metabolic fluxes and enzyme abundances. Indeed, even though the relationship between flux and enzyme abundances is commonly non-linear, the extent to which a particular pathway is used is more or less associated with the abundance of its enzymes [30]. Despite the fact that the DynamoYeast metabolic model is an oversimplified model of central carbon metabolism with glucose as the only external carbon source, we show that protein abundance variations were sufficient to capture quantitative changes in the orientation of central carbon metabolism that occurred between strains and between growing temperatures in our dataset. Even though our flux predictions may not be very accurate, we are confident that we captured the main patterns of flux variation. Predicting unobserved fluxes from observed protein abundances overall adds information about the functioning of the actual metabolic network.

The method described here relies on a probabilistic approach. Following [17], we chose to characterize the feasible solution space L by means of its posterior density distribution calculated with the Expectation Propagation (EP) algorithm. The computation time of the EP algorithm is much shorter than that of the well-known Hit and Run algorithm [18], allows to sample metabolic fluxes in L and provides their associated posterior probability. In order to select a unique solution in L , we minimized Z , the Euclidean distance between observed protein abundances and the associated metabolic fluxes weighted by the inverse of the probability of observing such a set of fluxes, p , (Eq 11). This minimization process involved sampling in L , and selection was made after computing Z over a high number of sampled points.

Computer simulations confirmed that our method had good prediction efficiency. In particular, we showed that prediction efficiency was not affected by the non-linearity of the flux-enzyme relationship. The most important parameter was the number of reactions N^{obs} for which proteomic observations were available, compared to the CBM size, n . When N^{obs} was too low, adding new information led to a decrease in prediction efficiency. A decrease in correlation between initial and predicted fluxes means that, when a new enzyme is added, the solution that minimized the total Euclidean distance can lead to flux predictions that are farther from their true value. This can occur whenever there is a weak correlation between the first $n - 1$ fluxes, and the additional flux v_n . Therefore, it is important that protein abundance observations cover the main features of the architecture of the metabolic network. Here, we observed protein abundances for 33 out of the 70 reactions of the DynamoYeast model, which was sufficient to attain high prediction accuracy. The structure of the stoichiometry matrix allows us to define metabolic modules that correspond to main metabolic pathways [28]. Our simulations showed the importance of covering most metabolic modules with observations of protein abundance. Recent progress in gel-free/label-free quantitative proteomics now allow to quantify thousands of proteins and should ensure good coverage even for metabolic models at the genome scale [31].

In this study, we predicted the metabolic fluxes of central carbon metabolism in a population obtained from a half-diallel cross between two species of yeast, *S. cerevisiae* and *S. uvarum*. The genetic values of 615 protein abundances and 28 fermentation/life-history traits were estimated under fermentation conditions at two different temperatures, 18°C and 26°C, leading to a total of 127 observations from 66 different yeast strains [32]. As described above, we predicted metabolic fluxes for each strain \times temperature combination by coupling the

DynamoYeast model, a highly curated Constraint-Based Model of central carbon metabolism [25] using the observed CO₂ release rate as *a priori* knowledge, and measurements of protein abundances associated with 33 out of the 70 reactions in the model.

The final dataset consisted of three matrices of 127 × 615 protein abundances, 127 × 70 central carbon fluxes, and 127 × 28 fermentation/life-history traits. As the total number of characters (713) greatly exceeded the number of samples (127), we used regularization techniques for the multivariate analyses [33]. In order to relate the variation patterns we observed at different integration levels, we used a top-down strategy from the most integrated to the least integrated level. First, we explored the correlation between traits and metabolic fluxes. Second, we identified the proteins which were not included in the metabolic model that best explained the correlation between traits and fluxes. We showed that the integration of the flux level allowed us to better understand the patterns of variation at the trait level.

In our dataset, we found a negative correlation between traits associated with growth and CO₂ fluxes, and traits associated with population size and fermentation length. These negative correlations reflected different life-history strategies, as has been observed previously in different yeast collections from either industrial [34] or natural sources [35, 36]. This broadly corresponds to the well-known *r-K* trade-off in ecology [37]. More recently, [38] suggested that such a trade-off could arise from eco-evolutionary feedback loops because competing strains also modify their environment through the production of different sets of metabolites. The HeterosYeast dataset shows that the choice of a strategy is plastic [21] and can be modified by the environment (here the fermentation temperature).

By adding information to the DynamoYeast model, we showed that such a trade-off can be explained by metabolic switches between fermentation associated with glycolysis, and downstream metabolite production, associated with the TCA cycle. This duality in the functioning of yeast central carbon metabolism was observed by [26], who matched the DynamoYeast model to experimentally measured exchange fluxes in different *S. cerevisiae* strains. The switch between the two modes of functioning (Fig 4) depends partly on the balance between two isoforms of alcohol dehydrogenase (ADH). Interestingly, [34] previously found that the trade-off between cell size and *K* is related to changes in the percentage of acetylation of ADH 1p, with high levels being associated with large cells and low *K*.

Because this paper describes a proof of concept, we deliberately chose to focus on central carbon metabolism and we used the DynamoYeast model because it contains a small number of reactions compared to available genome-scale models [24]. Therefore, we were not able to explain between-strain variation for traits related to secondary metabolism like aroma production, which merely discriminated between the two yeast species. Moreover, only a small subset of the proteomic data was coupled with the metabolic model. By searching for the proteins that best explained the trait patterns revealed at the flux level, we were able to identify proteins that were associated with the *r-K* trade-off at the trait level. Analysis of protein functional annotations confirmed the known link between the glycolysis and pentose-phosphate pathways and fermentation, and between extensive usage of TCA cycle and energy conversion.

Altogether, by coupling phenomic data with mathematical modeling of metabolism and cutting-edge statistical analyses (taking into account the high-dimensionality and heterogeneity of the measures), we were able to explain a well-known trade-off between two sets of yeast life-history traits by the differential usage of energy production pathways. Glycolysis and fermentation lead to fast growth and resource consumption. TCA and downstream metabolite production lead to slow growth and high population size. The duality between the two alternative uses of the central carbon metabolism is encoded into the architecture of the metabolic network.

Material and methods

Materials

Materials: The HeterosYeast dataset. The genetic material for the experimental study consisted of 7 strains of *S. cerevisiae* and 4 strains of *S. uvarum* associated with various food processes (enology, brewing, cider fermentation and distilling) or isolated from the natural environment (oak exudates). The 11 parental lines were selfed and pairwise crossed, which resulted in a half-diallel design with a total of 66 strains: 11 inbred lines, 27 intraspecific hybrids (21 for *S. cerevisiae*, noted *S. c.* × *S. c.*, and 6 for *S. uvarum*, noted *S. u.* × *S. u.*) and 28 inter-specific (noted *S. c.* × *S. u.*). The 66 strains were grown in triplicate in fermentors at two temperatures, 26°C and 18°, in a medium similar to enological conditions (Sauvignon blanc grape juice, [21]). From a total of 396 alcoholic fermentations (66 strains, 2 temperatures, 3 replicates), 31 failed due to the poor fermenting ability of certain strains. The design was set up as a block of two sets of 27 fermentations (26 plus a control without yeast to check for contamination), one carried out at 26°C and the other at 18°. The distribution of the strains in the block design was randomized to minimize residual variance of the estimators of the strain and temperature effects, as described in [34].

For each alcoholic fermentation, two types of phenotypic traits were measured or estimated from sophisticated data adjustment models: 35 fermentation/life-history traits and 615 protein abundances. Fermentation/life history traits were classified into four categories [21]:

- *Kinetics parameters*, computed from the CO₂ release curve modeled as a Weibull function fitted on CO₂ release quantification monitored by weight loss of bioreactors: the fermentation lag-phase, *t-lag* (h); the time to reach the inflection point out of the fermentation lag-phase, *t-V_{max}* (h); the fermentation time at which 45 gL⁻¹ and 75 gL⁻¹ of CO₂ was released, out of the fermentation lag-phase, *t-45* (h) and *t-75* (h) respectively; the time between *t-lag* and the time at which the CO₂ emission rate became less than, or equal to, 0.05 gL⁻¹h⁻¹, *AFtime* (h); the maximum CO₂ release rate, *V_{max}* (gL⁻¹ h⁻¹); and the total amount of CO₂ released at the end of the fermentation, *CO_{2max}* (gL⁻¹).
- *Life history traits*, estimated and computed from the cell concentration curves over time, modeled from population growth, cell size and viability quantified by flow cytometry analysis: the growth lag-phase, *t-N₀*(h); the carrying capacity, *K* (log[cells/mL]); the time at which the carrying capacity was reached, *t-N_{max}* (h); the intrinsic growth rate, *r* (log[cell division/mL/h]); the maximum value of the estimated CO₂ production rate divided by the estimated cell concentration, *J_{max}* (gh⁻¹10⁻⁸cell⁻¹); the average cell size at *t-N_{max}*, *Size-t-N_{max}*(μm); the percentage of living cells at *t-N_{max}*, *Viability-t-N_{max}* (%); and the percentage of living cells at *t-75*, *Viability-t-75* (%).
- *Basic enological parameters*, quantified at the end of fermentation: *Residual Sugar* (gL⁻¹); *Ethanol* (%vol); the ratio between the amount of metabolized sugar and the amount of released ethanol, *Sugar.Ethanol.Yield* (gL⁻¹%vol⁻¹); *Acetic acid* (gL⁻¹ of H₂SO₄); *Total SO₂* (mgL⁻¹) and *Free SO₂* (mgL⁻¹).
- *Aromatic traits*, mainly volatile compounds measured at the end of alcoholic fermentation by GC-MS: two higher alcohols (*Phenyl-2-ethanol* and *Hexanol*, mgL⁻¹); seven esters (*Phenyl-2-ethanol acetate*, *Isoamyl acetate*, *Ethyl-propanoate*, *Ethyl-butanoate*, *Ethyl-hexanoate*, *Ethyl-octanoate* and *Ethyl-decanoate*, mgL⁻¹); three medium chain fatty acids (*Hexanoic acid*, *Octanoic acid* and *Decanoic acid*, mgL⁻¹); one thiol *4-methyl-4-mercaptopentan-2-one*, *X4MMP*(mgL⁻¹) and the acetylation rate of higher alcohols, *Acetate ratio*.

For the proteomic analyses samples were harvested at 40% of CO₂ release, corresponding to the maximum rate of CO₂ release. Protein abundances were measured by LC-MS/MS techniques from both shared and proteotypic peptides relying on original Bayesian developments [39]. A total of 615 proteins were quantified in more than 122 strains × temperature combinations as explained in detail in [20].

Genetic value of protein abundances and fermentation/life-history traits. We considered the genetic value of protein abundances and fermentation/life-history traits, rather than their measured/computed value. In a previous study, [22] decomposed the phenotypic value of a trait at a given temperature, P_T , into its genetic, G_T , and residual, ϵ , contributions:

$$P_T = G_T + \epsilon \quad (1)$$

The genetic value, G_T , was decomposed in terms of additive and interaction effects, taking into account the structure of the half-diallel design. By including two different species and the parental inbreds in the experimental design, we were able to distinguish between intra- and interspecific additive genetic effects (A_w and A_b , respectively) and decompose the interaction effects into inbreeding (B) and intra and interspecific heterosis effects (H_w , H_b). Thus, the genetic value of a trait at a given temperature T was modeled as follows:

$$G_T^{p_i} = \mu_T + 2A_{w_i, T} + \beta_{s(i), T} + B_{i, T} \quad (2)$$

$$G_T^{H_{ij}^w} = \mu_T + A_{w_i, T} + A_{w_j, T} + H_{w_{ij}, T}, \quad (3)$$

$$G_T^{H_{ik}^b} = \mu_T + A_{b_i, T} + A_{b_k, T} + H_{b_{ik}, T}. \quad (4)$$

for a parental strain p_i (Eq 2), for an intraspecific hybrid H_{ij}^w between parents p_i and p_j (Eq 3), and for an interspecific hybrid H_{ik}^b between parents p_i and p_k (Eq 4). μ is the overall mean and $\beta_{s(i)}$ is the deviation from the fixed overall effect for the species:

$$s(i) \in \{S. cerevisiae, S. uvarum\}$$

We retrieved the genetic value for all proteomic data. For the fermentation traits, the model did not converge for most ethyl esters (*Ethyl-propanoate*, *Ethylbutanoate*, *Ethyl-hexanoate*, *Ethyl-octanoate* and *Ethyl-decanoate*), and for *Acetate Ratio* and *Acetic acid*. These traits were removed from the final analysis, which in the end included 28 traits.

Protein functional annotation. Cross-referencing MIPS micro-organism protein classification [40], KEGG pathway classification [41–43] and *Saccharomyces* Genome database [44] information, we attributed a single functional category to each protein.

The first two hierarchical levels of MIPS functional annotation were taken into account to assign proteins to 34 different categories. All secondary levels were used for the *01.metabolism*, *02.energy* and *10.cell cycle and DNA processing* categories, resulting in 20 different functional categories. The *11.transcription* category was subdivided into the *transcription* sub-group (*11.06 and 11.02*) and into the *RNA processing* sub-group (*11.04*). Similarly, the *12.protein synthesis* category was split into the *ribosomal proteins* (*12.01*) and *translation* (*12.04, 12.07, 12.10*) sub-groups, and the *20.transport* category was split into the *vacuolar transport* (*20.09*) and *transport* (*20.01, 20.03*) sub-groups.

By contrast, the first hierarchical category was used for *14.protein fate*, *30.signal transduction*, *32.detoxification*, *34.homeostasis*, *40.cell growth and death*, *42.cytoskeleton*. In addition, *16.binding function* and *18.02.regulation* category were fused into *16.binding*, and *32.transposon*

movement was fused with *10.01.DNA processing*. Finally, *41.mating* and *43.budding* were included in the *10.03.cell cycle* category.

DynamosYeast model. We used the DynamosYeast model, which is a previously developed Constraint-Based Model of central carbon metabolism in *S. cerevisiae* [25]. The main metabolic pathways included in this model are upper and lower glycolysis, the pentose phosphate pathway (PPP), glycerol synthesis, ethanol synthesis and the reductive and oxidative branches of the tricarboxylic acid (TCA) cycle. This model consists of 60 metabolites and 70 reactions, including one input flux, the uptake of glucose, and 10 output fluxes (Fig 1), taking place in the cytosol, mitochondria or in the extracellular medium.

The range of variation of the fluxes was fixed to allow for alcoholic fermentation. The following reactions were considered to be irreversible with $v^{\text{inf}} = 0$: *Oaa_Mal* (malate dehydrogenase), *Mal_Fum* (fumarase), *Fum_Succ* (fumarate reductase), and their respective mitochondrial counterparts *Oaa_Mal_m*, *Mal_Fum_m* and *Fum_Succ_m*, and *Oaa_Cit_m* (mitochondrial citrate synthase) (fluxes are denoted through the abbreviation of the substrate and the product connected by “_”, followed by the enzyme name in parentheses). The fructose reaction was not included in the model, and *Glu_Akg_m* (mitochondrial glutamate dehydrogenase), as well as *Aceto_But* (butanediol dehydrogenase) were set to zero. In all, there were 16 reversible and 52 irreversible reactions.

Following the conventions implemented by many genome-scale metabolic models, many reactions of the DynamosYeast model of central carbon metabolism in *S. cerevisiae* are associated with genes and proteins via gene-protein-reaction (GPR) associations [45].

In general, there can be a many-to-many mapping of genes to reactions; for example, one reaction can be linked to proteins (*P1* and *P2*) or *P3*. The first Boolean AND relationship means that the reaction is catalyzed by a complex of two gene products. Since the maximum of the complex is given by the minimum of its components, the weighting of the complex is defined as: $P1 \text{ AND } P2 = \min(P1, P2)$. The OR relationship allows for alternative catalysts of the reaction. Thus, total capacity is given by the sum of its components: $(P1 \text{ AND } P2) \text{ OR } P3 = \min(P1, P2) + P3$ [12]. Following these rules for each of the 11 yeast strains and the 55 hybrids at both temperatures, we estimated the protein abundances associated with the reactions of the DynamosYeast model, resulting in 33 reaction weightings out of 70.

Among the 70 reactions, only six were associated to protein complexes with an AND Boolean relationship, and four of them (in bold in the right column) matched two proteins of the HeterosYeast proteomic dataset (proteins in bold, Table 2).

We checked that pairwise correlations between proteins involved in the same complex were either positive or null, suggesting the absence of post-translational regulation that would change the overall enzyme concentration.

Methods

Constraint-based modeling of metabolic networks. Metabolic networks can be described in terms of the relationship between M metabolites, \mathbf{m} , and N reactions, \mathbf{v} , at a given time t :

$$(\mathbf{v}, \mathbf{m})_t$$

Their topology can be expressed through the $M \times N$ stoichiometric matrix \mathbf{S} , in which rows correspond to the stoichiometric coefficients of the corresponding metabolites in all reactions.

Under mass-balance assumptions and thermodynamic bounds of reaction rates, the dynamics of the network are governed by the linear system of constraints and inequalities:

$$\mathbf{S}\mathbf{v} = \dot{\mathbf{m}} \quad (5)$$

Table 2. Reactions associated to protein complexes with an AND Boolean relationship.

Proteins	Reactions
(YOR136W AND YNL037C)	Icit_Akg_m_nad
(YIL125W AND YDR148C AND YFL018C)	Akg_Succoa_m
(YGR240C AND YMR205C)	F6p_Fdp
(YBR221C AND YER178W AND YFL018C AND YGR193C AND YNL071W)	Pyr_Accoa_m
(YGR244C AND YOR142W)	Succoa_Succ_m
(YGL080W AND (YGR243W OR YHR162W))	Pyr_tm

<https://doi.org/10.1371/journal.pcbi.1009157.t002>

$$\mathbf{v}^{\text{inf}} \leq \mathbf{v} \leq \mathbf{v}^{\text{sup}} \tag{6}$$

where $\mathbf{m} \in \mathbb{R}^M$ is the vector of the M metabolite input/output rates, $\mathbf{v} \in \mathbb{R}^N$ is the set of N reactions, and $\mathbf{v}^{\text{inf}}, \mathbf{v}^{\text{sup}}$ are the extremes of variation of the set of fluxes. Under a steady state assumption, $\mathbf{m} = 0$ and the feasible solution space is expressed as:

$$L \equiv \{ \mathbf{v} \in \mathbb{R}^N \mid S\mathbf{v} = 0, \mathbf{v}^{\text{inf}} \leq \mathbf{v} \leq \mathbf{v}^{\text{sup}} \} \tag{7}$$

In general, N is larger than M and the solution space L has infinite cardinality.

Characterization of the feasible solution space. We characterized the feasible solution space L through the posterior probability of flux values obtained by the Expectation Propagation (EP) algorithm described in [17].

Instead of exploring L by sampling, as classical methods do, [17] combined statistical physics and Bayesian approaches to infer the joint distribution of metabolic fluxes. To do so, given a set of metabolite input/output rates, \mathbf{m} , they encoded the stoichiometric constraints within the likelihood posterior probability, defining a Boltzmann-like distribution with an energetic quadratic function

$$\mathcal{E}(\mathbf{v}) = \frac{1}{2} (S\mathbf{v} - \mathbf{m})^\top (S\mathbf{v} - \mathbf{m}) \tag{8}$$

while the inequality constraints were encoded in the prior probability of fluxes. Using Bayes theorem, this method provides a model for the posterior density of flux distribution.

Therefore, each point \mathbf{v} in L follows the truncated multivariate normal distribution

$$\forall \mathbf{v} \in L; \mathbf{v} \sim \mathcal{N}_T(\boldsymbol{\mu}, \boldsymbol{\Sigma} \mid \mathbf{v}^{\text{inf}}, \mathbf{v}^{\text{sup}}, \mathbf{m}) \tag{9}$$

where $\boldsymbol{\mu}$ is the vector of the mean posterior values of fluxes and $\boldsymbol{\Sigma}$ the posterior variance-covariance matrix of fluxes estimated with the EP algorithm.

For each set of metabolic fluxes \mathbf{v} , the posterior probability of observing \mathbf{v} can be calculated at follows:

$$p_{\mathbf{v}} = P(\mathbf{v} \mid \boldsymbol{\mu}, \boldsymbol{\Sigma}, \mathbf{v}^{\text{inf}}, \mathbf{v}^{\text{sup}}, \mathbf{m}) \tag{10}$$

Different values of extremes of variation can be used to model a particular process, for example for modeling reactions known to be irreversible in a specific context, *i. e.*

$$v_i^{\text{inf}} = 0 \text{ or } v_i^{\text{sup}} = 0$$

or for introducing experimental data constraints, *i. e.*

$$v_i = v_i^{\text{obs}} \pm \epsilon$$

for the *i*-th reaction.

Given that μ and Σ depend on the imposed range (v^{inf} , v^{sup}) of internal and exchange fluxes, metabolic fluxes will take on particular values with probabilities that will depend on *a priori* knowledge and on the chosen metabolic process.

The algorithm implemented by [17] was translated into R code. Extraction of the stoichiometric matrix from the *DynamoS*Yeast model was performed with the *sybil* package in R [46].

Prediction of metabolic fluxes from proteomic data. In living systems, most metabolic reactions are catalyzed by enzymes, and quantitative proteomic data retain information about enzyme abundances. Therefore, the metabolism of a cell at a given time is characterized by the set of fluxes, metabolites and protein abundances

$$(\mathbf{v}, \mathbf{m}, \mathbf{E})_t$$

where $\mathbf{E} = (E_1, E_2, \dots, E_N)$, and E_i is the abundance of enzyme *i* associated with the reaction flux v_i . Indeed, even though reaction rates are not directly proportional to enzyme abundances, a degree of covariation between protein abundance and flux reaction rate can be expected at the scale of the metabolic network. This can be used to infer intracellular metabolic fluxes with reasonable accuracy [12].

Among all possible solutions in *L*, we chose the one that minimized the objective function:

$$Z = \frac{1}{p_v} \sum_{i=1}^N (E_i - |v_i|)^2 \tag{11}$$

i.e. the Euclidean distance between the observed protein abundances \mathbf{E}_{obs} and the associated fluxes, weighted by p_v , the posterior probability of observing the set of metabolic fluxes \mathbf{v} .

The properties of the truncated multivariate normal distribution ensure that the solution of the objective function is unique and no sophisticated algorithm is needed to find this solution. For each set of observations \mathbf{E}_{obs} , we sampled N_s points of the feasible solution space. Therefore, $\forall k \in \{1, 2, 3, \dots, N_s\}$, we obtained $\mathbf{v}^k \in L$ and p_{v^k} . We calculated $Z^{(k)}$ and selected the set of flux values, $\mathbf{v}^{\text{predicted}}$, for which $Z^{(k)}$ was the minimum.

In practice, it is never possible to associate each reaction of the metabolic network with a protein abundance. First, quantitative proteomics is not exhaustive. Second, reactions in a metabolic model are not always associated with an enzyme. Assuming a steady state condition and introducing information about protein abundances and measured external metabolic fluxes allows us to describe the system as:

$$(\mathbb{1}_{\text{obs}} \mathbf{v} + \mathbb{1}_{\text{obs}}^{-1} \mathbf{v}, \mathbf{m}_{\text{const}}, \mathbb{1}_{\text{obs}} \mathbf{E} + \mathbb{1}_{\text{obs}}^{-1} \mathbf{E})_t \tag{18}$$

where $\mathbb{1}_{\text{obs}}$ ($\mathbb{1}_{\text{obs}}^{-1}$) is an indicator vector: its component-wise value is equal to 1 if the associated flux/protein component is observed (unobserved), otherwise it is equal to 0. Taking this into account, we reformulated the problem as follows:

- Observed fluxes were introduced as additional constraints with

$$v_i \sim \mathcal{N}(v_i^{\text{obs}}, \sigma_{v_i}^2)$$

where σ_{v_i} was set to a small value.

- The objective function was calculated only on the subset of observed enzyme abundances:

$$Z = \frac{1}{p_v} \sum_{i=1}^{N^{\text{obs}}} (E_i - |v_i|)^2$$

Predictions of metabolic fluxes were performed by coupling the DynamoYeast model to our experimental data (protein abundances and CO₂ reaction rates, the only measured flux in our study). We constrained the solution space L by considering the maximum CO₂ release rate, measured at the same time point as the one used in the proteomics analyses [20]. For each strain \times temperature combination a unique solution was obtained by minimizing the objective function, defined in Eq 11, from the set of observations.

Testing the prediction algorithm. The prediction algorithm is based on the assumption that fluxes and enzyme abundances covary. Indeed, any reaction rate can be expressed as a more or less complex function of enzyme abundances, kinetic constants and metabolite concentrations [47]:

$$v_i = k_{\text{cat}_i} E_i f(\boldsymbol{\kappa}, \boldsymbol{m}, E)$$

where k_{cat} is the catalytic constant, $\boldsymbol{\kappa}$ is a set of other kinetic constants, E is the set of enzymes abundances other than enzyme i . The f function can be more or less complex depending on the mode of regulation.

To test the accuracy of the prediction of metabolic fluxes from protein abundance data, we used the feasible solution space of the DynamoYeast model and three different functions relating reaction rates to enzyme abundances. Specifically, we reversed the relationship, expressing protein abundance as a function of the reaction rate using a simplified formalism derived from the Metabolic Control Theory [48, 49]

$$v_{\text{initial}} = \frac{1}{\frac{1}{A_i E_i} + \sum_{j \neq i} \frac{1}{A_j E_j}}$$

where the A_j 's are positive or negative constant terms. Given that enzyme concentrations cannot be negative, and taking $\forall j, A_j = \pm 1$, we obtain the hyperbolic relation:

$$E_i = \left| \frac{v_{\text{initial}}}{1 - v_{\text{initial}}} \right| \quad (12)$$

We also tested the predictions under the assumption that the relationship between protein abundances and flux reaction rates was linear:

$$E_i = k |v_{\text{initial}}| \quad (13)$$

k being an uniform random number $k \sim \mathcal{U}(0.1, 3)$

Finally, we considered the case where protein abundances and flux reaction rates are linked by a sigmoidal function [50], which we approximated with a Hill function:

$$E_i = \left| \frac{v_{\text{initial}}^n}{1 - v_{\text{initial}}^n} \right| \quad (14)$$

where n is the Hill coefficient, sampled in the set $\Omega = \{2, 3, 4, 5\}$.

For each simulation, we sampled an initial set of fluxes $v_{\text{initial}} \in L$. We estimated the complete set of enzymatic protein abundances, E_{initial} using Eqs 12, 13 or 14. Then, we minimized the objective function Z to predict the set of fluxes $v^{\text{predicted}}$ that best fit enzyme abundances.

Prediction accuracy was measured as the correlation coefficient between $\mathbf{v}^{\text{predicted}}$ and $\mathbf{v}^{\text{initial}}$. Computer simulations were performed to test the influence of two main parameters: (i) the number of sampled points N_s ; (ii) the number of quantified proteins, N^{obs} , included in the minimization process.

We assumed a steady state condition ($\dot{\mathbf{m}} = 0$) and sampled N_s points from the solution space of the multivariate posterior joint distribution of fluxes obtained using the EP algorithm [17]. We drew an additional point in solution space L , $\mathbf{v}^{\text{initial}}$, and we calculated protein concentrations from the inverse problem. We retained the set of fluxes, $\mathbf{v}^{\text{predicted}}$ for which Z was minimum. The numbers N^{obs} and N_s were let to vary ($N_s \in \{10^2, 10^3, 10^4, 10^5, 10^6\}$ and $N^{\text{obs}} \in \{1, 2, 3, \dots\}$).

In terms of computational time, it would be expensive to consider all the possible combinations of observed enzymatic proteins associated with the metabolic model that can be included in Eq 11 (there are $N^{\text{obs}}(1 + (N^{\text{obs}} - 1) + (N^{\text{obs}} - 1)(N^{\text{obs}} - 2) + \dots + (N^{\text{obs}} - 1)!$ combinations). Therefore, for a given N_s , our strategy was to randomly choose one-by-one a protein to be included in the computation of the Z function, and therefore for the prediction of metabolic fluxes $\mathbf{v}^{\text{predicted}}$.

We randomly choose one reaction, ν_1 , from the complete set of reactions in the model, and we minimized

$$Z_1 = \frac{1}{p_v} (E_1 - |\nu_1|)^2 \quad (15)$$

to select one solution $\mathbf{v}_1^{\text{predicted}}$ over the N_s possible solutions of L . At the next iteration, we randomly chose an additional flux ν_2 and its associated protein abundance E_2 , and we minimized

$$Z_2 = \frac{1}{p_v} \sum_{i=1}^2 (E_i - |\nu_i|)^2 \quad (16)$$

to predict $\mathbf{v}_2^{\text{predicted}}$. This procedure was performed until the complete set of reactions was selected. In total, simulations were run a thousand times for different values of N_s and N^{obs} .

Testing the CBM coverage with the observed proteomic dataset. We performed a modular decomposition of the DynamoYeast model via the analysis of the null space (or kernel) of model stoichiometric matrix to check that the 33 reactions that matched with observations of protein abundances were distributed over the main pathways.

The stoichiometric matrix S in the DynamoYeast model is of dimension 60×70 and of rank 54, meaning that 16 among the 70 reactions are strictly coupled. Thus, the dimension of the null space is $\text{Ker}(S) = 16$, roughly meaning that we need to know 16 independent flux combinations to predict changes in metabolic rates. Each reaction is associated with a 16 dimensional row vector in the null-space 70×16 matrix. We ran a hierarchical clustering using as a metric the symmetric matrix of the angles between the reaction vectors in the null-space [28] and we found, as previously shown, that the reactions cluster within metabolic pathways (S4 Fig). We found that the 33 reactions that matched with observations of protein abundances were distributed over the main pathways (S4 Fig).

In addition, we used our simulation method to check the correlations between initial and predicted fluxes by choosing as being observed the same 33 fluxes as in the experimental dataset.

Statistical analysis

In order to study the main features characterizing fermentation and life-history traits in the HeterosYeast dataset, we analyzed the variation components of data from three different levels of cellular organization: protein abundances **E**, metabolic fluxes **V** and fermentation/life-history traits **T**:

$$D = (\mathbf{E}, \mathbf{V}, \mathbf{T})$$

The total number of observations was 127 strain \times temperature combinations (66 strains, 2 temperatures, minus 5 missing data due to the poor fermenting abilities of some strains). The whole dataset consisted of 615 protein abundances, 70 metabolic fluxes and 28 fermentation and life-history traits. Two types of analyses were performed using different multivariate approaches: analyses at a single phenotypic level and analyses integrating the different levels.

We ran Principal Component Analyses (PCA) to identify the most important sources of variation within the datasets and the similarities/differences between the different phenotypic levels. We included prior knowledge regarding the yeast species in order to perform a supervised sparse Partial Least Squares Discriminant Analysis (sPLS-DA) to extract and combine discriminating features that best separate the different groups. The number of selected features was tuned using 3-fold cross-validation repeated 1,000 times.

In addition, the three levels of cellular organization were integrated in an unsupervised framework. First, we performed a regularized Canonical Correlation Analysis (rCCA) between fluxes **V** and integrated traits **T**, using the *mixomics* package in R [33, 51] to search for the key features that maximized the correlation between metabolic fluxes and fermentation traits. Second, since the correlation matrix between traits and fluxes was clearly structured, we computed the matrix of Euclidean distance between traits, based on their correlation with metabolic fluxes, and clustered traits using the *hclust* package in R. This procedure allowed us to define five groups of traits that showed similar correlation patterns with fluxes of the central carbon metabolism. Finally, we stored the linear correlation coefficients between proteins ($P = 615$) and traits ($T = 28$) in a ($T \times P$) matrix and ran a Linear Discriminant Analysis to search for proteins that best discriminate between groups of traits, considering traits as individuals. Pearson's chi-square test of enrichment was computed on protein functional category frequencies taking as prior probability the expected category frequency found in the MIPS database.

The same procedure was applied ignoring the flux level. rCCA was run between fluxes **V** and integrated traits **T**, and a hierarchical clustering was performed to group traits according to their correlations with protein abundances. Then a Linear Discriminant Analysis was performed to find the proteins that best discriminate between groups of traits.

Supporting information

S1 File. Sampling the solution space. Comparison of the posterior density distribution obtained by Hit and Run (HR) sampling with the Expectation Propagation (EP) algorithm. (PDF)

S1 Fig. Marginal probability densities of sixteen randomly chosen fluxes of carbon metabolism in yeast. The histograms represent the HR result for $T \sim 10^7$ sampling points. The red line is the result of the EP estimate. (TIF)

S2 Fig. Comparison of the results of HR versus EP. The plots on the left are scatter plots of the means and on the right variances of the approximated marginals computed via EP

against the ones estimated via HR for an increasing number of explored configurations T , top $T \sim 10^6$, bottom $T \sim 10^7$.

(TIF)

S3 Fig. Comparison of the results of HR versus EP. The plot shows the relationship between 8 pairwise fluxes. Correlation ellipses computed by the EP algorithm are drawn in red. Dot points represent the mean value of fluxes computed with EP. For HR samples, $T \sim 5 * 10^6$.

(TIF)

S4 Fig. Modular decomposition of the DynamoYeast model via null space analysis. The null space of the stoichiometric matrix of the DynamoYeast model is spanned by the columns of the 70 reactions \times 16 null-space matrix. Hierarchical clustering is applied using as a metric the angles between the 16 dimensional row vectors reactions. The reactions associated with enzymatic proteins quantified in this study are in blue, the other reactions present in the DynamoYeast model are in black.

(TIF)

S5 Fig. Correlation between fermentation and life-history traits and the first two axes of the Principal Component Analysis. The figure shows traits for which the correlation was > 0.5 or < -0.5 (p-value < 0.05). The first axis is negatively correlated with growth rate (r), CO_2 fluxes (J_{\max} and V_{\max}), *Hexanol* and *Decanoic acid* and positively correlated with carrying capacity (K) and fermentation times (AF_{time} , $t_{\text{-lag}}$, t_{-75} , t_{-45}). The second axis is positively correlated with cell size ($\text{Size-}t\text{-}N_{\max}$) and *Ethanol* at the end of fermentation, and negatively correlated with aroma production at the end of fermentation and *Sugar.Ethanol.Yield*.

(TIF)

S6 Fig. Correlation between metabolic fluxes and the first two axes of the sparse Partial Least Square Discriminant Analysis. The CO_2 , pyruvate decarboxylase, ethanol, alcohol dehydrogenase, 6-phosphogluconolactonase and phosphogluconate dehydrogenase fluxes contributed to the first axis of the sPLS-DA, and were all negatively correlated with it. The second axis was negatively correlated with the mitochondrial acetyl-CoA formation, mitochondrial citrate synthase, mitochondrial aconitate hydratase, mitochondrial isocitrate dehydrogenase (NAD⁺) and mitochondrial transport fluxes of pyruvate, oxaloacetate and acetaldehyde fluxes, while positively correlated with the mitochondrial transport of 2-oxodicarboxylate, ethanol and CO_2 fluxes.

(TIF)

S7 Fig. Linear Discriminant Analysis of protein abundances using as discriminant features the groups identified on the basis of the correlations between integrated traits and protein abundances. Projection of the 28 fermentation/life-history traits onto the first two axes of a Linear Discriminant Analysis of protein abundances. Each dot corresponds to one fermentation or life-history trait.

(TIF)

S1 Table. Metabolites of the DynamoYeast model. C and M stand for cellular and mitochondrial, respectively.

(XLSX)

Author Contributions

Conceptualization: Marianyela Sabina Petrizzelli, Dominique de Vienne, Camille Noûs, Christine Dillmann.

Data curation: Thibault Nidelet.

Formal analysis: Marianyela Sabina Petrizzelli.

Funding acquisition: Marianyela Sabina Petrizzelli.

Investigation: Marianyela Sabina Petrizzelli, Christine Dillmann.

Methodology: Marianyela Sabina Petrizzelli, Christine Dillmann.

Resources: Thibault Nidelet.

Supervision: Dominique de Vienne, Christine Dillmann.

Validation: Dominique de Vienne, Christine Dillmann.

Visualization: Marianyela Sabina Petrizzelli.

Writing – original draft: Marianyela Sabina Petrizzelli.

Writing – review & editing: Marianyela Sabina Petrizzelli, Dominique de Vienne, Thibault Nidelet, Christine Dillmann.

References

1. Fisher RA. The Genetical Theory of Natural Selection. Clarendon Press, Oxford; 1930.
2. Stearns S. The evolution of life histories. Oxford University Press; 1992.
3. Wagner GP, Zhang J. The pleiotropic structure of the genotype-phenotype map: the evolvability of complex organisms. *Nat Rev Genet.* 2011; 12(3):204–13. <https://doi.org/10.1038/nrg2949> PMID: 21331091
4. Antoniewicz MR. Methods and advances in metabolic flux analysis: a mini-review. *J Ind Microbiol Biotechnol.* 2015; 42(3):317–25. <https://doi.org/10.1007/s10295-015-1585-x> PMID: 25613286
5. Nicholson JK, Lindon JC. Systems biology: Metabonomics. *Nature.* 2008; 455(7216):1054–6. <https://doi.org/10.1038/4551054a> PMID: 18948945
6. Riekeberg E, Powers R. New frontiers in metabolomics: from measurement to insight. *F1000Research.* 2017; 6:1148. <https://doi.org/10.12688/f1000research.11495.1> PMID: 28781759
7. Fell DA, Small JR. Fat synthesis in adipose tissue. An examination of stoichiometric constraints. *Biochem J.* 1986; 238(3):781–786. <https://doi.org/10.1042/bj2380781> PMID: 3800960
8. Watson MR. Metabolic maps for the Apple II. *Biochemical Society Transactions.* 1984; 12:1093–1094. <https://doi.org/10.1042/bst0121093>
9. Gould SJ, Lewontin RC. The spandrels of San Marco and the Panglossian paradigm: a critique of the adaptationist programme. *Proc R Soc Lond B.* 1979; 295:581–598.
10. Edwards J, Ibarra R, Palsson B. In silico predictions of *Escherichia coli* metabolic capabilities are consistent with experimental data. *Nature Biotechnology.* 2001; 19(2):125–130. <https://doi.org/10.1038/84379> PMID: 11175725
11. Töpfer N, Kleessen S, Nikoloski Z. Integration of metabolomics data into metabolic networks. *Frontiers in plant science.* 2015; 6:49. <https://doi.org/10.3389/fpls.2015.00049> PMID: 25741348
12. Lee D, Smallbone K, Dunn WB, Murabito E, Winder CL, Kell DB, et al. Improving metabolic flux predictions using absolute gene expression data. *BMC Systems Biology.* 2012; 6(1):73. <https://doi.org/10.1186/1752-0509-6-73> PMID: 22713172
13. Becker SA, Palsson BO. Context-Specific Metabolic Networks Are Consistent with Experiments. *PLOS Computational Biology.* 2008; 4(5):e1000082. <https://doi.org/10.1371/journal.pcbi.1000082> PMID: 18483554
14. Yizhak K, Benyamini T, Liebermeister W, Ruppig E, Shlomi T. Integrating quantitative proteomics and metabolomics with a genome-scale metabolic network model. *Bioinformatics (Oxford, England).* 2010; 26(12):i255–260. <https://doi.org/10.1093/bioinformatics/btq183> PMID: 20529914
15. Goelzer A, Fromion V, Scorletti G. Cell design in bacteria as a convex optimization problem. *Automatica.* 2011; 47(6):1210–1218. <https://doi.org/10.1016/j.automatica.2011.02.038>
16. Goelzer A, Muntel J, Chubukov V, Jules M, Prestel E, Nölker R, et al. Quantitative prediction of genome-wide resource allocation in bacteria. *Metabolic Engineering.* 2015; 32:232–243. <https://doi.org/10.1016/j.ymben.2015.10.003> PMID: 26498510

17. Braunstein A, Muntoni AP, Pagnani A. An analytic approximation of the feasible space of metabolic networks. *Nature Communications*. 2017; 8:14915. <https://doi.org/10.1038/ncomms14915> PMID: [28382977](https://pubmed.ncbi.nlm.nih.gov/28382977/)
18. Béliisle CJP, Romeijn HE, Smith RL. Hit-and-Run Algorithms for Generating Multivariate Distributions. *Mathematics of Operations Research*. 1993; 18(2):255–266. <https://doi.org/10.1287/moor.18.2.255>
19. Blein-Nicolas M, Albertin W, Valot B, Marullo P, Sicard D, Giraud C, et al. Yeast Proteome Variations Reveal Different Adaptive Responses to Grape Must Fermentation. *Molecular Biology and Evolution*. 2013; 30(6):1368. <https://doi.org/10.1093/molbev/mst050> PMID: [23493259](https://pubmed.ncbi.nlm.nih.gov/23493259/)
20. Blein-Nicolas M, Albertin W, da Silva T, Valot B, Balliau T, Masneuf-Pomarede I, et al. A Systems Approach to Elucidate Heterosis of Protein Abundances in Yeast. *Mol Cell Proteomics*. 2015; 14(8):2056–71. <https://doi.org/10.1074/mcp.M115.048058> PMID: [25971257](https://pubmed.ncbi.nlm.nih.gov/25971257/)
21. da Silva T, Albertin W, Dillmann C, Bely M, la Guerche S, Giraud C, et al. Hybridization within *Saccharomyces* Genus Results in Homeostasis and Phenotypic Novelty in Winemaking Conditions. *PLOS ONE*. 2015; 10(5):1–24. <https://doi.org/10.1371/journal.pone.0123834> PMID: [25946464](https://pubmed.ncbi.nlm.nih.gov/25946464/)
22. Petrizzelli M, Vienne Dd, Dillmann C. Decoupling the Variances of Heterosis and Inbreeding Effects Is Evidenced in Yeast's Life-History and Proteomic Traits. *Genetics*. 2019; 211(2):741–756. <https://doi.org/10.1534/genetics.118.301635> PMID: [30509954](https://pubmed.ncbi.nlm.nih.gov/30509954/)
23. Cherry J, Hong E, Amundsen C, Balakrishnan R, Binkley G, Chan E, et al. *Saccharomyces* Genome Database: the genomics resource of budding yeast. *Nucleic Acids Res*. 2012; 40(Database issue): D700–5. <https://doi.org/10.1093/nar/gkr1029> PMID: [22110037](https://pubmed.ncbi.nlm.nih.gov/22110037/)
24. Caspi R, Altman T, Billington R, Dreher K, Foerster H, Fulcher C, et al. The MetaCyc database of metabolic pathways and enzymes and the BioCyc collection of Pathway/Genome Databases. *Nucleic Acids Res*. 2014; 42(Database issue):D459–71. <https://doi.org/10.1093/nar/gkt1103> PMID: [24225315](https://pubmed.ncbi.nlm.nih.gov/24225315/)
25. Celton M, Goelzer A, Camarasa C, Fromion V, Dequin S. A constraint-based model analysis of the metabolic consequences of increased NADPH oxidation in *Saccharomyces cerevisiae*. *Metabolic Engineering*. 2012; 14(4):366–379. <https://doi.org/10.1016/j.ymben.2012.03.008> PMID: [22709677](https://pubmed.ncbi.nlm.nih.gov/22709677/)
26. Nidelet T, Brial P, Camarasa C, Dequin S. Diversity of flux distribution in central carbon metabolism of *S. cerevisiae* strains from diverse environments. *Microbial Cell Factories*. 2016; 15(1). <https://doi.org/10.1186/s12934-016-0456-0> PMID: [27044358](https://pubmed.ncbi.nlm.nih.gov/27044358/)
27. Meersche KVd, Soetaert K, Oevelen DV. `xsample()`: An R Function for Sampling Linear Inverse Problems. *Journal of Statistical Software*. 2009; 30(Code Snippet 1). <https://doi.org/10.18637/jss.v030.c01>
28. Poolman MG, Sebu C, Pidcock MK, Fell DA. Modular decomposition of metabolic systems via null-space analysis. *Journal of Theoretical Biology*. 2007; 249(4):691–705. <https://doi.org/10.1016/j.jtbi.2007.08.005> PMID: [17949756](https://pubmed.ncbi.nlm.nih.gov/17949756/)
29. Palsson BO. *Systems Biology, Constraint-based Reconstruction and Analysis*. Cambridge University Press; 2015.
30. Sabarly V, Aubron C, Glodt J, Balliau T, Langella O, Chevret D, et al. Interactions between genotype and environment drive the metabolic phenotype within *Escherichia coli* isolates. *Environmental Microbiology*. 2016; 18(1):100–117. <https://doi.org/10.1111/1462-2920.12855> PMID: [25808978](https://pubmed.ncbi.nlm.nih.gov/25808978/)
31. Belouah I, Nazaret C, Pétriacq P, Prigent S, Bénard C, Mengin V, et al. Modeling protein destiny in developing fruit. *Plant Physiology*. 2019; p. pp.00086.2019. <https://doi.org/10.1104/pp.19.00086> PMID: [31015299](https://pubmed.ncbi.nlm.nih.gov/31015299/)
32. Albertin W, da Silva T, Rigoulet M, Salin B, Masneuf-Pomarede I, de Vienne D, et al. The Mitochondrial Genome Impacts Respiration but Not Fermentation in Interspecific *Saccharomyces* Hybrids. *PLOS ONE*. 2013; 8(9):1–14. <https://doi.org/10.1371/journal.pone.0075121>
33. Rohart F, Gautier B, Singh A, Cao KAL. `mixOmics`: An R package for 'omics feature selection and multiple data integration. *PLOS Computational Biology*. 2017; 13(11):e1005752. <https://doi.org/10.1371/journal.pcbi.1005752> PMID: [29099853](https://pubmed.ncbi.nlm.nih.gov/29099853/)
34. Albertin W, Marullo P, Bely M, Aigle M, Bourgeois A, Langella O, et al. Linking Post-Translational Modifications and Variation of Phenotypic Traits. *Molecular & Cellular Proteomics*. 2013; 12(3):720–735. <https://doi.org/10.1074/mcp.M112.024349> PMID: [23271801](https://pubmed.ncbi.nlm.nih.gov/23271801/)
35. Spor A, Wang S, Dillmann C, Vienne Dd, Sicard D. "Ant" and "Grasshopper" Life-History Strategies in *Saccharomyces cerevisiae*. *PLOS ONE*. 2008; 3(2):e1579. <https://doi.org/10.1371/journal.pone.0001579> PMID: [18270570](https://pubmed.ncbi.nlm.nih.gov/18270570/)
36. Spor A, Nidelet T, Simon J, Bourgeois A, de Vienne D, Sicard D. Niche-driven evolution of metabolic and life-history strategies in natural and domesticated populations of *Saccharomyces cerevisiae*. *BMC Evolutionary Biology*. 2009; 9(1):296. <https://doi.org/10.1186/1471-2148-9-296> PMID: [20028531](https://pubmed.ncbi.nlm.nih.gov/20028531/)
37. Pianka ER. On r- and K-Selection. *The American Naturalist*. 1970; 104(940):592–597. <https://doi.org/10.1086/282697>

38. Collot D, Nidelet T, Ramsayer J, Martin OC, Méléard S, Dillmann C, et al. Feedback between environment and traits under selection in a seasonal environment: consequences for experimental evolution. *Proceedings of the Royal Society B: Biological Sciences*. 2018; 285(1876):20180284. <https://doi.org/10.1098/rspb.2018.0284> PMID: 29643216
39. Blein-Nicolas M, Xu H, de Vienne D, Giraud C, Huet S, Zivy M. Including shared peptides for estimating protein abundances: A significant improvement for quantitative proteomics. *PROTEOMICS*. 2012; 12(18):2797–2801. <https://doi.org/10.1002/pmic.201100660> PMID: 22833229
40. Ruepp A, Zollner A, Maier D, Albermann K, Hani J, Mokrejs M, et al. The FunCat, a functional annotation scheme for systematic classification of proteins from whole genomes. *Nucleic Acids Research*. 2004; 32(18):5539–5545. <https://doi.org/10.1093/nar/gkh894> PMID: 15486203
41. Kanehisa M, Goto S. KEGG: kyoto encyclopedia of genes and genomes. *Nucleic Acids Research*. 2000; 28(1):27–30. <https://doi.org/10.1093/nar/28.1.27> PMID: 10592173
42. Kanehisa M, Sato Y, Kawashima M, Furumichi M, Tanabe M. KEGG as a reference resource for gene and protein annotation. *Nucleic Acids Research*. 2016; 44(D1):D457–462. <https://doi.org/10.1093/nar/gkv1070> PMID: 26476454
43. Kanehisa M, Furumichi M, Tanabe M, Sato Y, Morishima K. KEGG: new perspectives on genomes, pathways, diseases and drugs. *Nucleic Acids Research*. 2017; 45(D1):D353–D361. <https://doi.org/10.1093/nar/gkw1092> PMID: 27899662
44. Cherry JM, Hong EL, Amundsen C, Balakrishnan R, Binkley G, Chan ET, et al. Saccharomyces Genome Database: the genomics resource of budding yeast. *Nucleic Acids Research*. 2012; 40(Database issue):D700–705. <https://doi.org/10.1093/nar/gkr1029> PMID: 22110037
45. Thiele I, Palsson BO. A protocol for generating a high-quality genome-scale metabolic reconstruction. *Nature protocols*. 2010; 5(1):93–121. <https://doi.org/10.1038/nprot.2009.203> PMID: 20057383
46. Gelius-Dietrich G, Fritzscheier CJ, Desouki AA, Lercher MJ. sybil—Efficient constraint-based modelling in R. *BMC Systems Biology*. 2013; 7(1):125. <https://doi.org/10.1186/1752-0509-7-125> PMID: 24224957
47. Fell D, Cornish-Bowden A. *Understanding the control of metabolism*. vol. 2. Portland press London; 1997.
48. Kacser H, Burns JA. The control of flux. *Symp Soc Exp Biol*. 1973; 27:65–104. PMID: 4148886
49. Heinrich R, Rapoport TA. A linear steady-state treatment of enzymatic chains. General properties, control and effector strength. *Eur J Biochem*. 1974; 42(1):89–95. <https://doi.org/10.1111/j.1432-1033.1974.tb03319.x> PMID: 4830198
50. Nijhout HF, Berg AM, Gibson WT. A mechanistic study of evolvability using the mitogen-activated protein kinase cascade. *Evolution & Development*. 2003; 5(3):281–294. <https://doi.org/10.1046/j.1525-142X.2003.03035.x> PMID: 12752767
51. Lê Cao KA, González I, Déjean S. integrOmics: an R package to unravel relationships between two omics datasets. *Bioinformatics (Oxford, England)*. 2009; 25(21):2855–2856. <https://doi.org/10.1093/bioinformatics/btp515>