



**HAL**  
open science

## Botanic Origin of Propolis Extract Powder Drives Contrasted Impact on Diabesity in High-Fat-Fed Mice

Nicolas Cardinault, Franck Tourniaire, Julien Astier, Charlene Couturier, Lauriane Bonnet, Eva Seipelt, Esma Karkeni, Claire Letullier, Naima Dlalah, Stephane Georgé, et al.

### ► To cite this version:

Nicolas Cardinault, Franck Tourniaire, Julien Astier, Charlene Couturier, Lauriane Bonnet, et al.. Botanic Origin of Propolis Extract Powder Drives Contrasted Impact on Diabesity in High-Fat-Fed Mice. *Antioxidants*, 2021, 10 (3), pp.411. 10.3390/antiox10030411 . hal-03328822

**HAL Id: hal-03328822**

**<https://hal.inrae.fr/hal-03328822>**

Submitted on 28 Jun 2023

**HAL** is a multi-disciplinary open access archive for the deposit and dissemination of scientific research documents, whether they are published or not. The documents may come from teaching and research institutions in France or abroad, or from public or private research centers.

L'archive ouverte pluridisciplinaire **HAL**, est destinée au dépôt et à la diffusion de documents scientifiques de niveau recherche, publiés ou non, émanant des établissements d'enseignement et de recherche français ou étrangers, des laboratoires publics ou privés.



Distributed under a Creative Commons Attribution 4.0 International License



## Article

# Botanic Origin of Propolis Extract Powder Drives Contrasted Impact on Diabetes in High-Fat-Fed Mice

Nicolas Cardinault <sup>1</sup>, Franck Tourniaire <sup>2,3</sup>, Julien Astier <sup>2</sup>, Charlene Couturier <sup>2</sup>, Lauriane Bonnet <sup>2</sup>, Eva Seipelt <sup>2</sup>, Esma Karkeni <sup>2</sup>, Claire Letullier <sup>1</sup>, Naima Dlahah <sup>4</sup> , Stephane Georgé <sup>4</sup>, Lourdes Mounien <sup>2</sup> and Jean-Francois Landrier <sup>2,3,\*</sup>

- <sup>1</sup> Pollenergie, La Grabère, 47450 Saint Hilaire de Lusignan, France; nicolas.cardinault@gmail.com (N.C.); claire.letullier@pollenergie.fr (C.L.)
- <sup>2</sup> Aix Marseille University, C2VN, INRAE, INSERM, 13000 Marseille, France; feukauff@yahoo.fr (F.T.); julien.astier@univ-amu.fr (J.A.); charlene.couturier@univ-amu.fr (C.C.); bonnet.lauriane19@gmail.com (L.B.); seipelt.eva@gmail.com (E.S.); esma1304@hotmail.fr (E.K.); lourdes.mounien@univ-amu.fr (L.M.)
- <sup>3</sup> CriBioM, Criblage Biologique Marseille, Campus Santé Timone, 13000 Marseille, France
- <sup>4</sup> Biochemistry Department, Centre Technique de Conservation des Produits Agricoles (CTCPA), site Agroparc, 84911 Avignon, France; Naima.Dlahah@inrae.fr (N.D.); sgeorge@ctcpa.org (S.G.)
- \* Correspondence: jean-francois.landrier@univ-amu.fr; Tel.: +33-4-91-29-42-75



**Citation:** Cardinault, N.; Tourniaire, F.; Astier, J.; Couturier, C.; Bonnet, L.; Seipelt, E.; Karkeni, E.; Letullier, C.; Dlahah, N.; Georgé, S.; et al. Botanic Origin of Propolis Extract Powder Drives Contrasted Impact on Diabetes in High-Fat-Fed Mice.

*Antioxidants* **2021**, *10*, 411.

<https://doi.org/10.3390/antiox10030411>

antiox10030411

Academic Editor: Miguel Vilas-Boas

Received: 29 January 2021

Accepted: 5 March 2021

Published: 9 March 2021

**Publisher's Note:** MDPI stays neutral with regard to jurisdictional claims in published maps and institutional affiliations.



**Copyright:** © 2021 by the authors. Licensee MDPI, Basel, Switzerland. This article is an open access article distributed under the terms and conditions of the Creative Commons Attribution (CC BY) license (<https://creativecommons.org/licenses/by/4.0/>).

**Abstract:** Propolis extracts are considered as nutraceutical products with potentialities towards obesity and comorbidities management. Nevertheless, propolis extracts composition is highly variable and depends on the botanic origin of plants used by the bees to produce propolis. This study aims to evaluate the differential effect of poplar propolis extract powder (PPEP), *Baccharis* propolis extract powder (BPEP), and/ or *Dalbergia* propolis extract powder (DPEP) on obesity and glucose homeostasis in high-fat-fed mice. PPEP supplementation reduced high-fat (HF)-mediated body weight gain, adiposity index, and improved glucose homeostasis in male C57Bl/6J mice that were submitted to a high-fat diet for 12 weeks, whereas BPEP, DPEP, or a mix of the three PEPs did not modify those parameters. Adipose tissue (AT) gene expression profiling highlighted an induction of mRNA related to lipid catabolism and an inhibition of mRNA coding for inflammatory markers. Several Nrf2 target genes, coding for antioxidant enzymes, were induced in AT under PPEP effect, but not by other PEP. Interestingly, representative PPEP polyphenols mediated the induction of Nrf2 target genes cell-autonomously in adipocytes, suggesting that this induction may be related to the specific polyphenol content of PPEP. Whereas PPEP supplementation has demonstrated a clear potential to blunt the onset of obesity and associated comorbidities, other PEPs (from *Baccharis* and *Dalbergia*) were inefficient to support their role in preventive nutrition.

**Keywords:** adipose tissue; glucose tolerance; obesity; propolis; preventive nutrition

## 1. Introduction

Propolis is a resinous substance collected by bees from buds, trees, or shrubs in the plant ecosystem close to the hive [1]. Propolis has been used as a folk medicine in Europe, Asia, and South America, [2,3]. The various biological and pharmacological effects reported for propolis activity are related to the phenolic compounds, which can widely vary in quality and in quantity, depending on the plant source and the site of collection [1]. Three types of propolis have been subjected to in-depth studies in terms of identification, characterization, and biological activities [1,4,5], i.e., the brown propolis from *Populus* sp. (poplar) produced in temperate zones, characterized by the presence of the polyphenolic taxonomic markers such as pinocembrin, chrysin, and galangin, and esters of substituted cinnamic acids, especially phenylethyl caffeate (CAPE) [6]. The green propolis from *Baccharis dracunculifolia* from the Minas Gerais region in Brazil is characterized by the presence of artepellin C, p-coumaric, and drupanin as taxonomic markers [7,8], and the red

propolis from *Dalbergia ecastaphyllum* from the region of Alagoas in Brazil is identified by the specific presence of isoflavans, isoflavons, or pterocarpan class represented by vestitol, formononetin, and medicarpin [5,9].

Interestingly, preclinical studies performed in animal models of obesity and/or diabetes have reported beneficial phenotypical impact of propolis (mainly as ethanolic extracts) supplementation on these noncommunicable diseases [10–15]. Such preventive approach, based on nutraceutical use of propolis, would be relevant to tackle obesity and associated disorders, including type 2 diabetes (T2DM). Indeed, obesity is considered as a major public health problem throughout the world, and a major risk factor of T2DM, which represents 90–95% of diabetes mellitus cases worldwide [16]. T2DM is a systemic disease strongly linked to obesity-mediated, low-grade inflammation. Such process, which corresponds to an increased production of mediators of the immune response [17], including cytokines [17], chemokines [18], and microRNA [19–21] by adipose tissue (AT), and a reduction of adiponectin plasma level [22], interferes with insulin signaling in insulin-sensitive tissues (liver, skeletal muscle, and AT), and contributes to the etiology of T2DM [23].

All the studies depicting potential interest of propolis extracts supplementation to limit obesity and comorbidities have used propolis from different origins, suggesting that various types of propolis are able to mediate similar effects. Nevertheless, propolis extracts used in these studies result from different preparative methods, have been administrated at different doses (with a content of active ingredients not known), using different ways of administration and vehicles to deliver extracts [11,12,14,24–27]. Therefore, it is difficult to properly interpret those results and to compare efficiency of the different types of propolis, since no study has been designed to compare the effect of propolis extracts from different botanical origins administered at the same dose in active principles, on the same set of experiments. Thus, the aim of the present study is to evaluate the ability of different botanical types of propolis extract powder (PEP) from poplar, *Baccharis dracunculifolia*, or *Dalbergia ecastaphyllum*, to limit body weight gain and glucose homeostasis disruption in diet-induced obese mice.

## 2. Materials and Methods

### 2.1. Propolis Powder Preparation

All propolis samples were gathered according to special specifications to minimize their contamination. Pollenergie selected these supplies from beekeepers from the southern regions of France for poplar propolis, from the Minas Gerais region in Brazil for *Baccharis* propolis, and from the Alagoas region in Brazil for *Dalbergia* propolis. These three propolis samples were initially analyzed by GC-MS in Vassya Bankova Laboratory (Laboratory of chemistry of natural compounds, Sofia, Bulgaria) in order to confirm the botanical origin of each sample by comparing the polyphenolic imprint to the taxonomic markers of the source plant [28]. The identification of the main molecules, listed in Table 1, in different samples confirmed their botanical origin. Samples were kept frozen and stored at  $-20\text{ }^{\circ}\text{C}$ . The propolis powders were prepared from ethanolic extracts. Ethanolic extract of propolis was prepared using the method previously described [29]. Briefly, the raw propolis was cut into small pieces, incubated in 75% ethanol for 8 days, filtered twice, and then evaporated at  $50\text{ }^{\circ}\text{C}$  using a rotary evaporator (Evaporator E100). The dry residue of each botanical propolis type was then reduced to powder by grinding by adding food excipients to give the propolis extract powder (PEP) used in the present study.

**Table 1.** Polyphenols content of the different propolis powder extracts.

Polyphenol (mg/100 g)	Poplar Propolis Extract	Baccharis Propolis Extract	Dalbergia Propolis Extract
Caffeic acid	373	87	Nm
Coumaric acid	1654	728	Nm
Ferulic acid	381	28	Nm
Apigenin	137	Nd	Nm
CAPE	246	Nd	Nm
Quercetin	94	213	Nm
Kaempferol	368	288	Nm
Galangin	1598	Nd	Nm
Cinnamic acid	789	Nd	Nm
Pinocembrin	2349	73	Nm
Chrysin	1850	Nd	Nm
Artepillin C	Nd	1503	Nm
Formononetin	Nm	Nm	1010
Biochanin A	Nm	Nm	167
Liquiritigenin	Nm	Nm	1075
Vestitol	Nm	Nm	9741
Medicarpin	Nm	Nm	4317
Total polyphenols (g/100 g extract powder)	41.1	20	29.5

Nd: non detected; Nm: not measured; CAPE: phenylethyl caffeate.

## 2.2. Total and Individual Polyphenols Quantification

Total polyphenol content was measured according to the method described by Popova et al. [30]. Briefly, 1 g of each PEP was dissolved in 30 mL of ethanol (70%) in a 50 mL Falcon tube and heated for 2 h at 70 °C. After centrifugation, the ethanolic phase was recovered and the extraction was repeated twice. All supernatants were combined and adjusted to 100 mL with 70% ethanol in a volumetric flask. PEP solutions were finally diluted 1 to 50 times in methanol/water (1:1). Standard solutions were prepared using the following protocol. A blank tube was prepared with 100 µL of 70% ethanol and 100 µL of standard mix of diluted concentrations, and 1.5 mL of distilled water was added with 0.4 mL of Folin–Ciocalteu reagent. The tubes were vortexed, and 0.6 mL of Na<sub>2</sub>CO<sub>3</sub> 20% and 2.4 mL of distilled water were added and mixed. The tubes were incubated at 50 °C for 15 min. After cooling at room temperature, absorbance was measured at 760 nm. Samples were diluted 1/10 with 70% ethanol before analysis. Of diluted extracts of propolis, 100 µL was placed into tubes, and the procedure was the same for the standard. Results were expressed as milligrams of pinocembrin/galangin (2:1 (*w/w*)) equivalent per 100 g of powder of poplar propolis and as gallic acid equivalent for *Baccharis* and *Dalbergia* propolis [28]. The analyses were performed in triplicate. Polyphenol profile was determined by HPLC as previously reported by Gardana et al. [31] for poplar propolis extract powder (PPEP) and *Baccharis* propolis extract powder (BPEP). Separation was achieved by HPLC using a Symmetry (250 × 4.6 mm, C18) column (Waters, Saint Quentin en Yvelines, France). Samples were eluted with formic acid 0.1% (solvent A) and acetonitrile (solvent B) at a flow rate of 1.2 mL/min. A stepwise gradient was employed, starting at 80% A and 20% B and changing to 30% B in 10 min, to 40% B in 40 min, to 50% B in 50 min, to 100% B in 55 min during 5 min; the gradient returned to initial condition at 62 min for the last 8 min. DAD data were acquired in the 200–450 nm range. Specifically, isoflavones, which are specific markers of *Dalbergia* propolis extract powder (DPEP) and found only in the propolis of this

botanic origin, were determined by HPLC as previously reported [9]. The DPEP solution was acidified with trifluoroacetic acid, and the separation was achieved by HPLC using a Kinetex C18 100 × 4.6 mm, 2.6 µm column (Phenomenex, France). Samples were eluted with formic acid 1% (solvent A) and acetonitrile with 1% formic acid (solvent B) at a flow rate of 1.2 mL/min. A stepwise gradient was employed, starting at 80% A and 20% B and changing to 30% B in 10 min, to 40% B in 40 min, to 60% B in 60 min, and to 98% B in 80 min during 10 min. DAD data were acquired in the 200–482 nm range. Polyphenolic compounds and isoflavones were identified by comparing their retention time and UV characteristics to standards. The composition in terms of individual polyphenol for each PEP solution is reported on Table 1.

### 2.3. Animal Experiments

The protocol received the agreement of the local ethics committee and the French Minister of Research and Education (ethical approval number n°01549.04). Six-week-old male C57BL/6J mice were obtained from Janvier Labs (Le Genest Saint Isle, France) and fed ad libitum with control food (chow diet A04 from Safe-diets) during a 1-week acclimation period, with full access to drinking water. The animals were maintained at 22 °C under a 12 h light, 12 h dark cycle at 20% humidity level. Mice (10 per group) were randomly assigned into one of the six experimental groups depending on the diet, that is, control (chow diet A04 from Safe diets), high fat (HF: 45% energy from lipids, Test Diet ref. 58V8), HF supplemented with PPEP (4.5 mg of total polyphenols/mouse/day), HF supplemented with BPEP (4.5 mg of total polyphenols/mouse/day), HF supplemented with DPEP (4.5 mg of total polyphenols/mouse/day), or HF supplemented with mix (mix of the 3 PEPs, 1.5 mg of PPEP, BPEP, and DPEP, the sum corresponding to 4.5 mg of total polyphenols/mouse/day). PEPs were mixed in the food in a quantity depending of their respective total polyphenol concentration to deliver a similar amount of total polyphenol per day for 12 weeks, that is, 4.5 mg of total polyphenol/mouse/day. Body weight evolution was followed once a week, and food intake was measured every two weeks. Twelve weeks after the beginning of the protocol, mice were fasted overnight. Blood sampling was performed by cardiac puncture under general anesthesia. Plasma was prepared by centrifugation at 3000 rpm for 15 min at 4 °C and was stored at −80 °C. Mice were euthanized by cervical dislocation under general anesthesia, and various tissues (liver and various white AT deposits) were collected, weighted, and stored at −80 °C.

### 2.4. Oral Glucose Tolerance Test

Two weeks before the end of the protocol, mice were subjected to glucose tolerance tests. To this aim, overnight-fasted (16 h) mice were gavaged with glucose (2 g/kg). Whole blood was drawn from tail tip for glucose measurements (Accu-Check glucometer, Roche Diagnostic, Meylan, France).

### 2.5. Biochemical Analyses

All parameters have been quantified as previously reported [32,33]. Briefly, glucose concentration in plasma was evaluated using glucose RTU (bioMerieux, Craponne, France). Triglycerides and free fatty acids (FFAs) were measured by colorimetric methods (RANDOX, Crumlin, Co. Antrim, United Kingdom). Insulin was measured using an enzyme-linked immuno-sorbent assay ELISA (ALPCO Diagnostics, New Hampshire, United States). Leptin and adiponectin were quantified by ELISA (R&D Systems quantikine ELISA). β-hydroxybutyrate concentration was measured using a colorimetric test according to the manufacturer's procedure (BEN srl, Milano, Italy). The HOMA-IR index was calculated according to the following formula: fasting insulin (µU/L) × fasting glucose (nmol/L)/22.5.

## 2.6. Cell Culture

3T3-L1 preadipocytes (ATCC, Manassas, VA) were seeded in 3.5 cm diameter dishes at a density of  $15 \times 10^4$  cells/well. Cells were grown in DMEM supplemented with 10% FBS at 37 °C in a 5% CO<sub>2</sub> humidified atmosphere, as previously reported [34–36]. To induce differentiation, two-day postconfluent 3T3-L1 preadipocytes (Day 0) were stimulated for 48 h with 0.5 mM isobutylmethylxanthine, 0.25 μM dexamethasone, and 1 μg/mL insulin in DMEM supplemented with 10% FBS. The cultures were then treated with DMEM supplemented with 10% FBS and 1 μg/mL insulin. To examine the impact of purified polyphenols on gene expression, 3T3-L1 adipocytes were incubated with various concentrations of polyphenols (chrysin, galangin, pinocembrin, and caffeic acid phenethyl ester (CAPE)) dissolved in ethanol at 0.1% for 24 h. Control received the vehicle (ethanol) alone. Concentrations used were calculated to correspond to the concentrations of polyphenols in a solution of 30 μg/mL of PEP, on the basis of their respective quantities determined in PEP. All treatments were performed on Day 8. The data are the mean of three independent experiments, each performed in triplicate.

## 2.7. RNA Extraction and Real-Time PCR

Total RNA was extracted from epididymal AT or from cells using TRIzol reagent (Thermo, Courtaboeuf, France), as previously described [37]. One microgram of total RNA was used to synthesize cDNAs using random primers and Moloney murine leukemia virus reverse transcriptase (Thermo, Courtaboeuf, France). Real-time quantitative PCR analyses were performed using the AriaMX real-time PCR system (Agilent Technologies France, Les Ullis) as previously described [38]. For each condition, expression was quantified in duplicate, and 18S rRNA was used as the endogenous control in the comparative cycle threshold (CT) method [39]. Primers used are listed in Table 2.

Table 2. Primers sequences.

Gene Name	Accession Number	Forward Primer	Reverse Primer
<i>Tnfr</i>	NM_013693.3	CATCTTCTCAAATTCGAGTGACAA	TGGGAGTAGACAAGGTACAACCC
<i>Ppara</i>	NM_011144.6	CTGAGACCCCTCGGGGAAC	AAACGTCAGTTCACAGGGAAG
<i>Mcad</i>	NM_007382.5	TGTCGAACACAACACTCGAAA	CTGCTGTTCCGTCAACTCAA
<i>Lcad</i>	NM_007381.4	TGGGGACTTGCTCTCAACA	GGCCTGTGCAATTGGAGTA
<i>Ccl2</i>	NM_011333.3	CATCCACGTGTTGGCTCA	GATCATCTTGCTGGTGAATGAGT
<i>Ccl5</i>	NM_013653.3	TGCAGAGGACTCTGAGACAGC	GAGTGGTGTCCGAGCCATA
<i>Hmox1</i>	NM_010442.2	AGGCTAAGACCGCCTTCCT	TGTGTTCTCTGTGACGATCA
<i>Gclc</i>	NM_010295.2	AGATGATAGAACACGGGAGGAG	TGATCCTAAAGCGATTGTTCTTC
<i>Gclm</i>	NM_008129.4	TGACTCACAATGACCCGAAA	TCAATGTCAGGGATGCTTTCT
<i>Nqo1</i>	NM_008706.5	AGCGTTCGGTATTACGATCC	AGTACAATCAGGGCTCTTCTCG
18S	NR_003278.3	CGCCGCTAGAGGTGAAATTCT	CATTCTTGCAAATGCTTTTCG

## 2.8. Statistical Analysis

The data are communicated as the mean ± SEM. Significant differences between the control and treated groups were determined using ANOVA, followed by the Fisher's (least significant difference (LSD) post hoc test using GraphPad Prism.  $p < 0.05$  was considered statistically significant.

## 3. Results

### 3.1. Polyphenols Quantification in the Different Propolis Extract Powders

As a first experiment, the total quantity of polyphenols was determined (Table 1) to provide similar amounts of total polyphenols to mice in the different groups. Then, the

individual polyphenol profile and content of the three different PEPs were determined (Table 1).

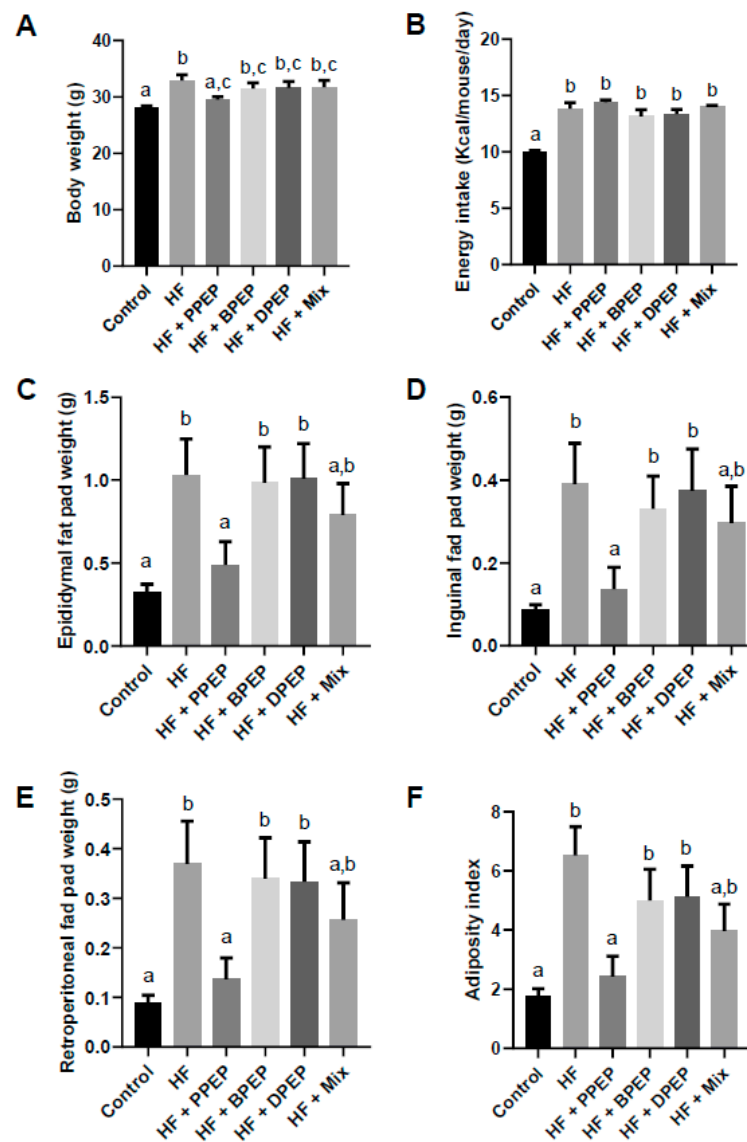
### 3.2. Propolis Extract Powder Supplementation Differentially Protects Against Diet-Induced Obesity

The effect of the supplementations with the three PEPs and a mix of the three PEPs (at the same quantity of total polyphenols, i.e., 4.5 mg of total polyphenols/mouse/day) were evaluated in C57BL/6J mice submitted to a HF diet for 12 weeks. Only PPEP supplementation significantly limited weight gain compared with the HF diet (Figure 1A). Other PEPs and the mix did not modify body weight compared with the HF group. The energy intake of the HF group was higher than that of the control group, but was not impacted by the various PEP supplementations, compared to the HF group (Figure 1B). Body weight gain limitation in PPEP-supplemented mice was associated with an absolute fat mass limitation of all different fat pads measured (epididymal, retroperitoneal, or inguinal; Figure 1C–E). Consequently, the adiposity index (sum of epididymal, inguinal, and retroperitoneal AT mass relative to total body mass) of PPEP-supplemented mice was significantly reduced, compared with HF-fed mice (Figure 1F). BPEP, DPEP, and the mix did not modify the absolute fat pad masses or the adiposity index compared with the HF group. Only the mix tended to reduce all these parameters, but did not reach statistical significance. Plasma biochemical parameters were quantified (Table 3). Triglyceride levels were only modestly decreased by BPEP. No modulation of nonesterified fatty acids and alanine transaminase (ALAT) levels was observed in HF or PEP-supplemented groups. Adiponectin plasma level was not modified by PPEP supplementation compared to HF group but was significantly reduced compared with the control group. Supplementation with BPEP, DPEP, and the mix increased adiponectin levels compared with the HF group. Leptin plasma level increased in the HF group compared with the control group and reduced in the PPEP-supplemented group, but was not modified by other PEPs.  $\beta$ -hydroxybutyrate level was increased in the HF group compared with the control group and was reduced by all PEPs except DPEP.

**Table 3.** Biochemical parameters of mice.

	Control	HF	HF + PPEP	HF + BPEP	HF + DPEP	HF + Mix
<b>TG (mmol/L)</b>	1.195 ± 0.11 a	1.092 ± 0.12 a,c	0.93 ± 0.03 a	0.822 ± 0.13 b,c	0.92 ± 0.05 a	1.15 ± 0.08 a
<b>NEFA (mmol/L)</b>	1.075 ± 0.12 a	1.041 ± 0.09 a	0.94 ± 0.07 a	1.005 ± 0.007 a	1.052 ± 0.115 a	1.071 ± 0.08 a
<b>B-OH butyrate (mmol/L)</b>	2.319 ± 0.15 a	4.051 ± 0.35 b	2.44 ± 0.26 a	3.13 ± 0.48 a,b	3.26 ± 0.41 b	2.89 ± 0.30 a
<b>ALAT (UI)</b>	2479 ± 313 a	2225 ± 400 a	2592 ± 529 a	2659 ± 643 a	1980 ± 263 a	2175 ± 732 a
<b>Adiponectin (ng/mL)</b>	6836 ± 370 a	5072 ± 776 b,c	4712 ± 287 b	6369 ± 609 a	6860 ± 576 a	6401 ± 508 a,c
<b>Leptin (pg/mL)</b>	1660 ± 658 a	12029 ± 2961 b,c	2900 ± 2038 a	8323 ± 2246 a,c	11196 ± 2995 b	9774 ± 3368 b

TG: triglycerides; NEFA: nonesterified fatty acids; B-OH butyrate:  $\beta$ -hydroxy butyrate; ALAT: alanine transaminase. PPEP: poplar propolis extract powder; BPEP: *Baccharis* propolis extract powder; DPEP: *Dalbergia* propolis extract powder; Mix: mixture of the 3 propolis extract powders. Values are reported as means ± SEM. Bars not sharing the same letter were significantly different in ANOVA followed by a Fisher's least significant difference (LSD) post hoc test at  $p < 0.05$ .



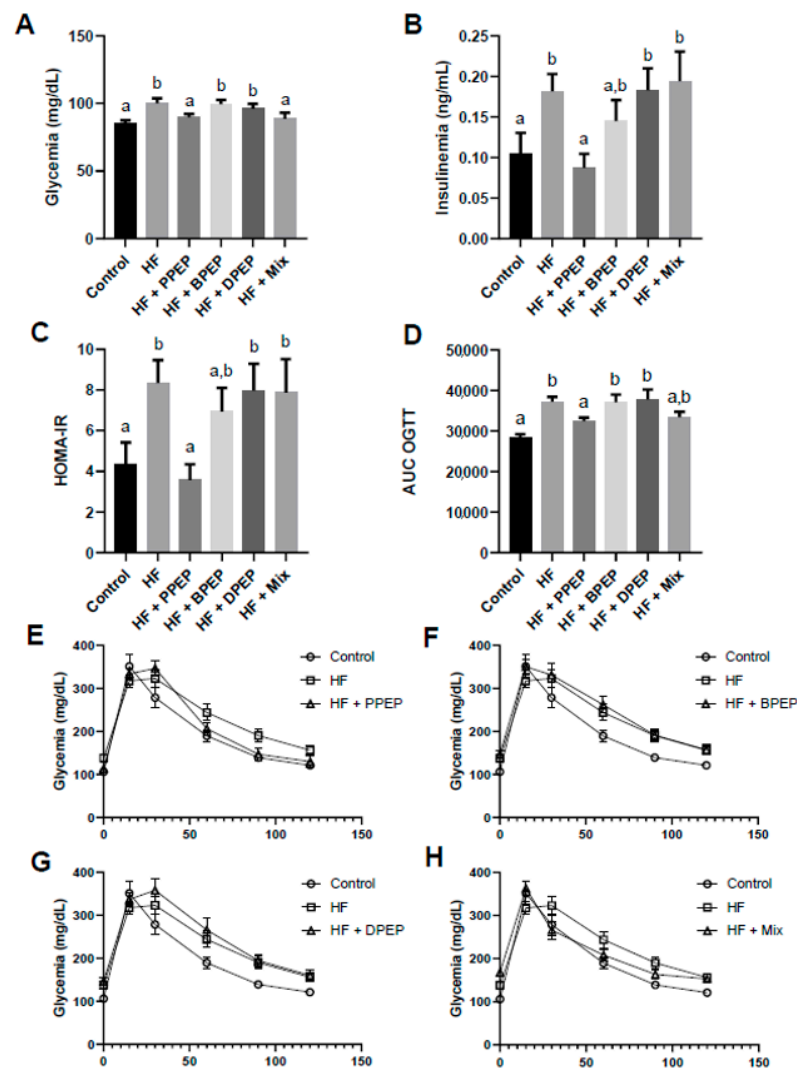
**Figure 1.** Propolis extract powder differentially limits weight gain associated with diet-induced obesity. (A) Mice were weighed at the end of the protocol ( $n = 10$  per group). (B) Food intake was estimated to determine energy intake every two weeks for a period of 10 weeks. (C) Absolute epididymal fat pad weight (grams). (D) Absolute inguinal fat pad weight (grams). (E) Absolute retroperitoneal fat pad weight (grams). (F) Adiposity index was determined by dividing the sum of adipose tissues weight by the body weight of animal. Values are presented as means  $\pm$  SEM. Bars not sharing the same letter were significantly different in Fisher's LSD post hoc test  $p < 0.05$ . PPEP: poplar propolis extract powder; BPEP: *Baccharis* propolis extract powder; DPEP: *Dalbergia* propolis extract powder; Mix: mixture of the 3 propolis extract powders.

### 3.3. Poplar Propolis Extract Powder Supplementation Improves Glucose Homeostasis

The effect of PEP supplementations on glucose homeostasis was evaluated in fasted animals. Glycemia was increased by HF diet and normalized compared with the control group in PPEP- and mix-supplemented mice (Figure 2A). Plasma insulin was higher in the HF group, but only PPEP supplementation normalized this parameter compared to the control group (Figure 2B). HOMA-IR index was increased by HF diet and corrected by PPEP supplementation. Other PEP supplementations did not significantly improve HOMA-IR compared to the HF group (Figure 2C). Additionally, the impact of PEP supplementations was also evaluated through oral glucose tolerance test (OGTT). PPEP and mix supplementations improved glucose tolerance in OGTT (Figure 2E,H), as highlighted



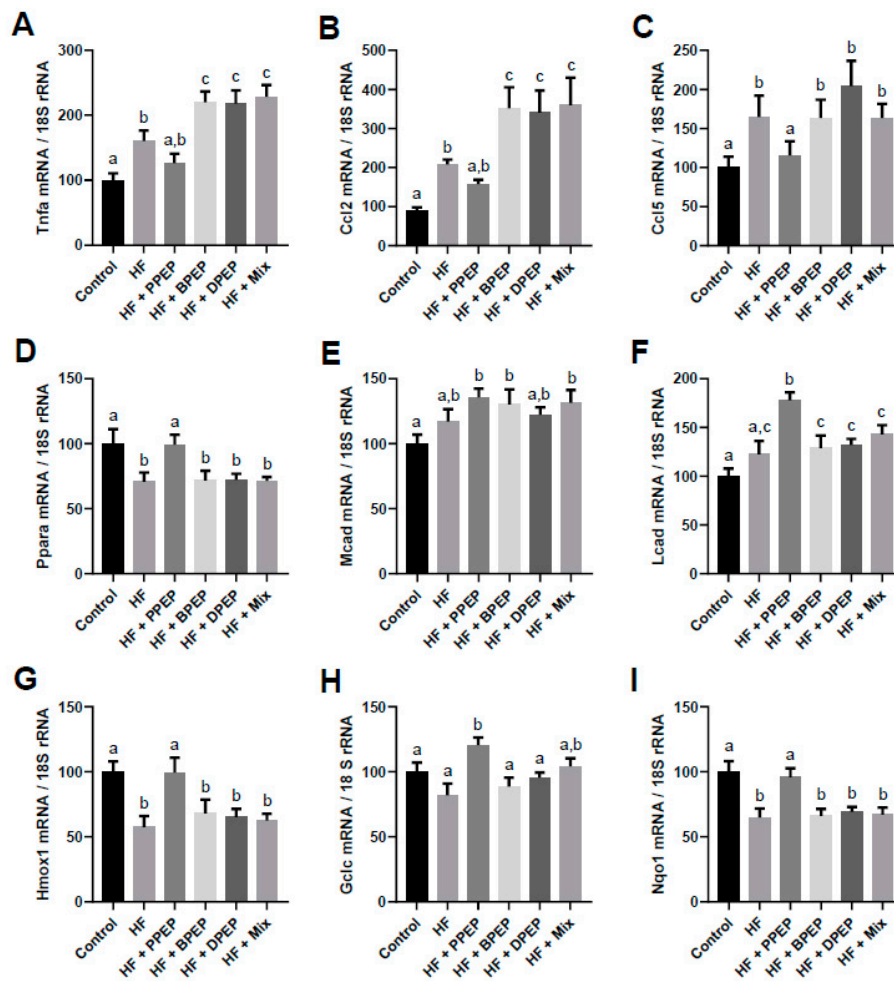
by area under the curve (AUC) of the glycemic response (Figure 2D), which was smaller compared with the HF-fed mice.



**Figure 2.** Propolis extract powder differentially improves glucose homeostasis. (A) Glycemia of mice was determined in fasted state ( $n = 10$  mice per group). (B) Insulinemia was determined in fasted state. (C) HOMA-IR mean values were calculating using fasted glycemia and insulinemia. (D) Area under the curve for the glycemic response during oral glucose tolerance test (OGTT). (E–H) Glycemic evolution following the OGTT ( $n = 10$  mice per group). Values are presented as means  $\pm$  SEM. Bars not sharing the same letter were significantly different in Fisher’s LSD post hoc test  $p < 0.05$ . PPEP: poplar propolis extract powder; BPEP: *Baccharis* propolis extract powder; DPEP: *Dalbergia* propolis extract powder; Mix: mixture of the 3 propolis extract powder.

### 3.4. Poplar Propolis Extract Powder Supplementation Modifies Gene Expression in Adipose Tissue

The effect of the various PEP supplementations was evaluated on AT inflammation. The expression of several mRNAs coding for markers of inflammation such as  $Tnf-\alpha$  and chemokines, including chemokine C-C motif ligand 5 (Ccl5) and Ccl2, was quantified. As expected, the HF diet increased these mRNA levels compared with the control group. Interestingly, PPEP supplementation decreased the mRNA level of these inflammatory markers (Figure 3A–C), whereas other PEPs and the mix further increased the expression of those mRNAs (Figure 3A,B) or did not modify the expression level compared to the HF group.



**Figure 3.** Propolis extract powder differentially impacts gene expression in adipose tissue. (A–C) Relative expression of genes related to inflammatory markers measured by qPCR in epididymal adipose tissue measured through qPCR and expressed relative to 18S ribosomal RNA. (D–F) Relative expression of genes related to lipid metabolism measured through qPCR in epididymal adipose tissue and expressed relative to 18S ribosomal RNA. (G–I) Relative expression of Nrf2 target genes coding for antioxidant enzymes measured through qPCR in epididymal adipose tissue and expressed relative to 18S ribosomal RNA.  $n = 10$  mice per each group, values are presented as means  $\pm$  SEM. Bars not sharing the same letter were significantly different in Fisher's LSD post hoc test  $p < 0.05$ . PPEP: poplar propolis extract powder; BPEP: *Baccharis* propolis extract powder; DPEP: *Dalbergia* propolis extract powder; Mix: mixture of the 3 propolis extract powder.

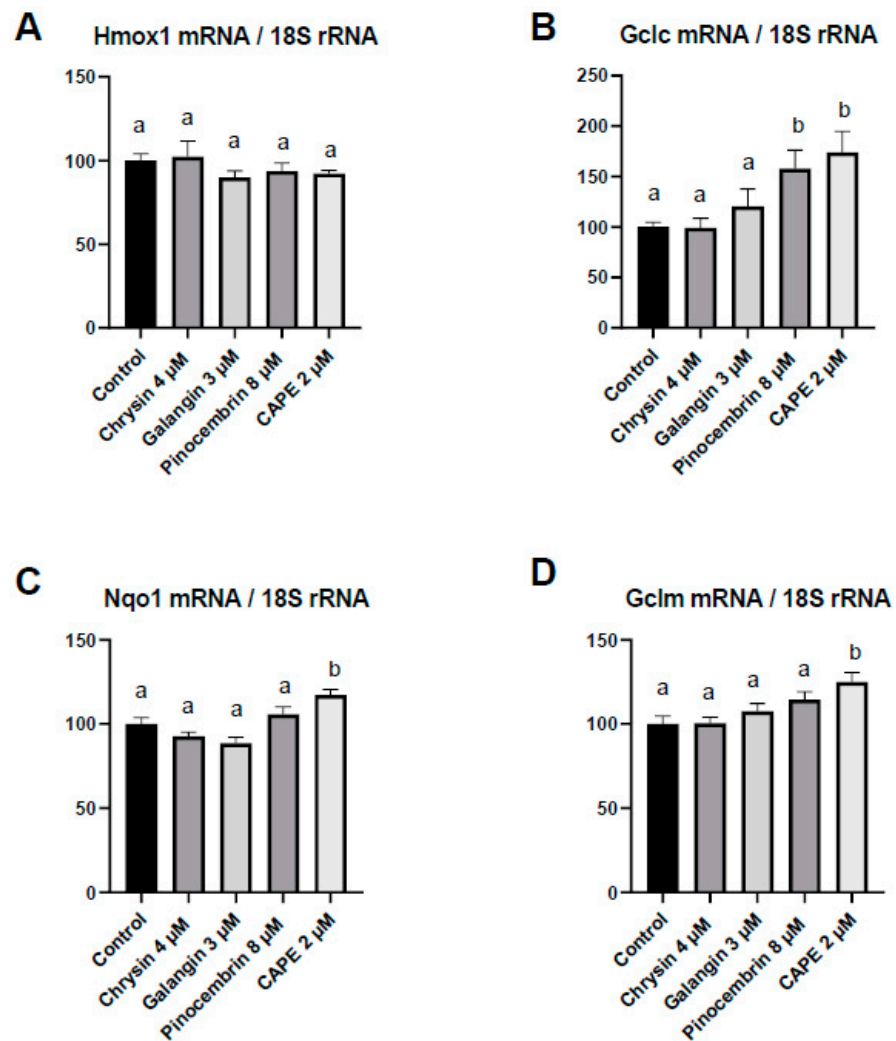
The expression of genes encoding transcription factors involved in energy metabolism and fatty acid oxidation was studied in order to explain the differential AT mass accumulation. mRNA levels coding for the peroxisome proliferator-activated receptor  $\alpha$  (Ppar- $\alpha$ ) were downregulated in HF-fed mice compared with the control group. Interestingly, PPEP supplementation restored the mRNA levels of Ppar- $\alpha$ , whereas BPEP, DPEP, and the mix did not induce any modification compared to the HF group (Figure 3D). The medium-chain acyl-CoA dehydrogenase (Mcad) mRNA was induced by all PEPs, except DPEP, compared to control group, but was not statistical different from that of the HF group (Figure 3E). The long-chain acyl-CoA dehydrogenase (Lcad) mRNA levels were also induced by the PPEP, compared to HF-fed mice, but the other supplementations did not modulate its expression compared to the HF group (Figure 3F).

Since nuclear factor erythroid 2-related factor 2 (Nrf2) signaling is suspected to mediate the effects of PEP, the activation of this pathway was investigated. Several target genes of Nrf2, including heme oxygenase 1 (Hmox1), glutamate-cysteine ligase catalytic subunit (Gclc), and NADPH: quinone oxidoreductase 1 (Nqo1), were evaluated. Hmox1 and Nqo1 genes were downregulated by the HF diet compared to the control diet (Figure 3G,I), and

Gclc was only slightly and not significantly reduced by the HF diet (Figure 3H). PPEP supplementation restored the downregulated mRNA levels of Hmox1 and Nqo1, but the other PEPs or the mix were inefficient (Figure 3G,I). Regarding Gclc mRNA, only PPEP significantly induced its expression compared to HF or control groups (Figure 3H).

### 3.5. Polyphenols Present in Poplar Propolis Extract Powder Modify Gene expression in Adipocytes

To go further in the identification of the bioactive molecules present in PPEP that may be responsible for the Nrf2 signaling activation, the ability of the main PPEP polyphenols to modulate Nrf2 target genes was evaluated in adipocytes. If the expression of Hmox1 mRNA level was not modified by polyphenol incubation in adipocytes, Gclc gene was induced by both pinocembrin and CAPE, whereas Nqo1 and Gclm genes were induced only by CAPE (Figure 4).



**Figure 4.** Polyphenols differentially impact gene expression in adipocytes. (A–D) Relative expression of Nrf2 target genes (Hmox1, Gclc, Nqo1, and Gclm) coding for antioxidant enzymes measured through qPCR and expressed relative to 18S ribosomal RNA. 3T3-L1 adipocytes were incubated with chrysin (4  $\mu$ M), galangin (3  $\mu$ M), pinocembrin (8  $\mu$ M), or CAPE (2  $\mu$ M) for 24 h. Values are presented as means  $\pm$  SEM. Bars not sharing the same letter were significantly different in Fisher’s LSD post hoc test  $p < 0.05$ .

In the present study, we compared the efficiency of three different PEPs and a mix of these PEPs to blunt obesity and associated disruption of glucose homeostasis mediated by an HF diet in mice.

The PEPs used in the present study have been extracted with the same methodology from propolis of three different botanic origins and are known to display distinct phytochemical compositions, in agreement with quantifications of polyphenols presently reported. Indeed, the PPEP was prepared from propolis collected from *Populus sp.*, in temperate zones, and is characterized by flavonoids without B-ring substituents (including pinocembrin, pinobanksin, galangine, and chrysin), and phenylpropanoid acids and their esters (caffeic acid phenethyl ester: CAPE). The BPEP was prepared from green propolis collected from *Baccharis dracunculifolia* in the Minas Gerais region in Brazil. This propolis is characterized by prenylated phenylpropanoids (artepellin C) and caffeoylquinic acids. Finally, the DPEP was prepared from red propolis whose source is *Dalbergia ecastophyllum* from the region of Algodas in Brazil. This extract is mainly characterized by the high presence of isoflavonoids (formononetin) [5]. Thus, the polyphenolic fraction of these different extracts is very different from one botanical source to another and thus constitutes a kind of specific fingerprint for each propolis type. It also suggests that the biological effects mediated by the different extracts may differ depending on their specific polyphenols.

In agreement, we demonstrated that the PPEP supplementation limited weight gain, mainly via a limitation of fat mass accretion as reflected by the reduced adiposity index in mice HF-diet-fed mice, similarly to previous reports [27,40,41]. Such effect was associated to a decrease of leptin plasma levels, which correlated to the reduction in mass of the different fat pads [42]. Surprisingly, BPEP and DPEP did not induce such body weight limitation and limitation of fat mass accumulation, whereas the mix of the three PEPs resulted in a clear tendency to reduce fat mass accumulation and adiposity index. This last effect could be due to the fact that one-third of the mix was provided by PPEP. Nevertheless, the fact that both BPEP and DPEP were inefficient is surprising since many studies already reported a beneficial impact of Brazilian propolis regarding metabolic disorders. Indeed, several studies using Brazilian propolis supplementation in HF-fed rats [10] or mice [11–13] reported a limitation of fat mass. If the botanical origin of the Brazilian propolis was not mentioned in some studies [10,12,13], Sakai et al. indicated that *Baccharis dracunculifolia* was the main botanical source used in their experiments [11]. It is noteworthy that the quantity of artepellin C (major phenolic acid of Brazilian propolis) found in the propolis used by Sakai et al. was four times higher than in our BPEP, and could explain in part the conflicting results. Nevertheless, the origin of such discrepancies is presently not clear, as several parameters could be involved, such as the duration of the treatment, the doses used, the galenic to deliver the molecules (propolis or extracts), the administration way, and finally, the animal model used.

Interestingly, the role of CAPE to mediate beneficial effects of PPEP could be evoked, since the anti-obesity effect of this compound has already been reported [43], and it is noteworthy that this molecule is present in PPEP, but not in BPEP, in our extracts. In addition, this molecule was able to induce cell-autonomously the upregulation of several Nrf2 target genes in adipocyte cultures, suggesting that this bioactive compound may mediate the transactivation of the Nrf2 signaling pathway, possibly involved in the anti-obesity effects of the PPEP [40].

Since we [40] and others [41] have reported that the weight gain limitation under PPEP was correlated to an induction of several genes related to fatty acid oxidation/browning in white AT, we explored, in the present study, the expression of genes linked to lipid metabolism. As anticipated, PPEP supplementation, but not other PEPs or the mix, induced the expression of Ppar- $\alpha$ , Mcad, and Lcad, suggesting that PPEP activated a fatty acid oxidative program, known to be associated with enhanced energy expenditure [44]. Such mechanism is highly suspected to explain, at least in part, the anti-obesity effect for natural bioactive compounds such as all-trans retinoic acid [36], vitamin D [45,46], or lycopene [32].

Besides the effect on lipid metabolism, we also investigated the impact of supplementations on inflammatory marker expression, since it is well established that AT accumulation leads to the establishment of a low-grade inflammatory status in AT [17]. PPEP supplementation reduced the tumoral necrosis factor  $\alpha$  (Tnf- $\alpha$ ), C-C Motif Chemokine Ligand 2

(Ccl2), and 5 (Ccl5) mRNA levels, whereas BPEP and DPEP slightly induced Tnf- $\alpha$  and Ccl2 mRNA levels and did not modify the expression of Ccl5. These data suggest that some phenolic compounds present in BPEP and DPEP may have a direct pro-inflammatory effect in AT since those extracts did not increase the fat mass, resulting in an indirect pro-inflammatory effect. This point remains unclear and will require further experiments.

The AT inflammatory status plays a major role in the disruption of glucose homeostasis in the context of obesity. Thus, we evaluated the impact of PEP supplementation on fasted glycemia, insulinemia, HOMA-IR, and glycemia evolution during an oral glucose tolerance test. All these parameters were improved in HF-fed mice supplemented with PPEP, which is in agreement with the previous data. Indeed, propolis extracts have been depicted to restore glucose tolerance and insulin sensitivity/secretion in several type 2 diabetes animal models [13–15,26,27,47]. Nevertheless, homeostasis of only some of glucose parameters was improved by the other supplements: fasted glycemia and the area under the curve of the OGTT was improved by the mix, and plasma insulin tended to be reduced by the BPEP. If the slight effect of the mix could be easily explained by the presence of PPEP in this mix that drove beneficial effect, the impact of BPEP on plasma insulin is less clear, but it is suggested that BPEP could partly restore insulin sensitivity [27]. The mechanism behind the effect is presently not known and will deserve further experiments.

Several molecular mechanisms have been proposed to explain the biological effect of propolis, including the Nrf2 signaling pathway. Indeed, we recently demonstrated that PPEP transactivated Nrf2 signaling in AT. Such activation could be involved in the reported PPEP effect on obesity and associated disorders [40], since several Nrf2 agonists, including CDDO-lm [48], oltipraz [49], glycyrrhizin [50], or glucoraphanin [51], were able to blunt the HF-mediated obesity and insulin resistance in rodents. In addition, several bioactive molecules found in propolis are able to activate the Nrf2 signaling pathway [52], including CAPE [53], as suggested by cell culture experiments presented here. Nevertheless, the mechanisms by which Nrf2 activators restore energy homeostasis in a diet-induced obesity mice model remains elusive, and several hypotheses have been emitted, including induction of lipid oxidation and limitation of oxidative stress and inflammation, which display an important role in energy homeostasis and insulin sensitivity disruption [54,55].

Nrf2 belongs to the cap'n'collar-type transcription factor family (for review [56–58]). Bioactive compound inducers of Nrf2 will upregulate several genes, including Nqo1, Gclc, and Hmox-1 coding for proteins of the antioxidant system and detoxification system. In line with the putative involvement of this signaling pathway, we reported in the present study that several Nrf2 target genes (Hmox1, Gclc, and Nqo1) were upregulated by PPEP and CAPE, but not by other PEPs, supporting the role of the Nrf2 activation in the metabolic PPEP-mediated effects, via a CAPE-dependent mechanism.

#### 4. Conclusions

To conclude, our data strongly support the specific role of PPEP as an interesting nutraceutical approach to blunt HF-mediated obesity and glucose homeostasis disruption. Note that the quantity of total polyphenols provided to mice corresponds to a dose of 12 mg of total polyphenol/kilogram of body weight in human, taking into account the conversion factor for dose translation between mice and human [59]. Such dosage corresponds to a physiological dose of polyphenol (around 840 mg for a 70 kg adult subject), compared to the mean polyphenol intake in human (1 g/day; [60]). We can easily hypothesize that this effect depends on the specific phenolic compound profile of PPEP, especially the presence of CAPE. Nevertheless, we have to keep in mind that such profile is subjected to variations from batches to batches and from years to years. Therefore, a process of standardization would be required to provide PEP with a consistent bioactive compound profile, to warrant a consistent effect on diet-induced obesity limitation.

**Author Contributions:** Methodology: S.G.; Study design: N.C. and J.-F.L.; data collection: F.T., C.C., J.A., L.B., E.S., E.K., C.L., N.D., and L.M.; data interpretation: N.C., F.T., L.M., and J.-F.L.; manuscript preparation: N.C. and J.-F.L.; funds collection: N.C. and J.-F.L. All authors have read and agreed to the published version of the manuscript.

**Funding:** This research was funded by INRAE, INSERM, AMU, Pollenergie and Région Nouvelle Aquitaine.

**Institutional Review Board Statement:** The study received the agreement of the local ethics committee and the French Minister of Research and Education (ethical approval number n°01549.04).

**Informed Consent Statement:** Not applicable.

**Data Availability Statement:** The data presented in this study are available on request from the corresponding author. The data are not publicly available due to privacy.

**Conflicts of Interest:** N.C. and C.L. are employed by Pollenergie. Other authors have nothing to disclose.

## References

- Sforcin, J.M. Biological Properties and Therapeutic Applications of Propolis. *Phytother. Res.* **2016**, *30*, 894–905. [[CrossRef](#)]
- Pasupuleti, V.R.; Sannam, L.; Ramesh, N.; Gan, S.H. Honey, Propolis, and Royal Jelly: A Comprehensive Review of Their Biological Actions and Health Benefits. *Oxid. Med. Cell Longev.* **2017**, *2017*, 1259510. [[CrossRef](#)]
- Lotfy, M. Biological activity of bee propolis in health and disease. *Asian Pac. J. Cancer Prev.* **2006**, *7*, 22–31.
- Cardinault, N.; Cayeux, M.O.; Percie du Sert, P. La propolis: Origine, composition et propriétés. *Phytothérapie* **2012**, *10*, 298–304. [[CrossRef](#)] [[PubMed](#)]
- Salatino, A.; Fernandes-Silva, C.C.; Righi, A.A.; Salatino, M.L.F. Propolis research and the chemistry of plant products. *Nat. Prod. Rep.* **2011**, *28*, 925. [[CrossRef](#)]
- Bankova, V.S.; de Castro, S.L.; Marcucci, M.C. Propolis: Recent advances in chemistry and plant origin. *Apidologie* **2000**, *31*, 3–15. [[CrossRef](#)]
- Bankova, V.; Boudourova-Krasteva, G.; Sforcin, J.M.; Frete, X.; Kujumgiev, A.; Maimoni-Rodella, R.; Popov, S. Phytochemical Evidence for the Plant Origin of Brazilian Propolis from São Paulo State. *Z. Naturforsch. C* **1999**, *54*, 401–405. [[CrossRef](#)] [[PubMed](#)]
- Kumazawa, S.; Yoneda, M.; Shibata, I.; Kanaeda, J.; Hamasaka, T.; Nakayama, T. Direct Evidence for the Plant Origin of Brazilian Propolis by the Observation of Honeybee Behavior and Phytochemical Analysis. *Chem. Pharm. Bull.* **2003**, *51*, 740–742. [[CrossRef](#)]
- Piccinelli, A.L.; Lotti, C.; Campone, L.; Cuesta-Rubio, O.; Campo Fernandez, M.; Rastrelli, L. Cuban and Brazilian Red Propolis: Botanical Origin and Comparative Analysis by High-Performance Liquid Chromatography–Photodiode Array Detection/Electrospray Ionization Tandem Mass Spectrometry. *J. Agric. Food Chem.* **2011**, *59*, 6484–6491. [[CrossRef](#)] [[PubMed](#)]
- Ichi, I.; Hori, H.; Takashima, Y.; Adachi, N.; Kataoka, R.; Okihara, K.; Hashimoto, K.; Kojo, S. The beneficial effect of propolis on fat accumulation and lipid metabolism in rats fed a high-fat diet. *J. Food Sci.* **2009**, *74*, H127–H131. [[CrossRef](#)]
- Sakai, T.; Ohhata, M.; Fujii, M.; Oda, S.; Kusaka, Y.; Matsumoto, M.; Nakamoto, A.; Taki, T.; Nakamoto, M.; Shuto, E. Brazilian Green Propolis Promotes Weight Loss and Reduces Fat Accumulation in C57BL/6 Mice Fed A High-Fat Diet. *Biol. Pharm. Bull.* **2017**, *40*, 391–395. [[CrossRef](#)]
- Koya-Miyata, S.; Arai, N.; Mizote, A.; Taniguchi, Y.; Ushio, S.; Iwaki, K.; Fukuda, S. Propolis prevents diet-induced hyperlipidemia and mitigates weight gain in diet-induced obesity in mice. *Biol. Pharm. Bull.* **2009**, *32*, 2022–2028. [[CrossRef](#)]
- Kitamura, H.; Naoe, Y.; Kimura, S.; Miyamoto, T.; Okamoto, S.; Toda, C.; Shimamoto, Y.; Iwanaga, T.; Miyoshi, I. Beneficial effects of Brazilian propolis on type 2 diabetes in ob/ob mice: Possible involvement of immune cells in mesenteric adipose tissue. *Adipocyte* **2013**, *2*, 227–236. [[CrossRef](#)]
- Peng, S.; Wei, P.; Lu, Q.; Liu, R.; Ding, Y.; Zhang, J. Beneficial Effects of Poplar Buds on Hyperglycemia, Dyslipidemia, Oxidative Stress, and Inflammation in Streptozotocin-Induced Type-2 Diabetes. *J. Immunol. Res.* **2018**, *2018*, 7245956. [[CrossRef](#)] [[PubMed](#)]
- Chen, L.H.; Chien, Y.W.; Chang, M.L.; Hou, C.C.; Chan, C.H.; Tang, H.W.; Huang, H.Y. Taiwanese Green Propolis Ethanol Extract Delays the Progression of Type 2 Diabetes Mellitus in Rats Treated with Streptozotocin/High-Fat Diet. *Nutrients* **2018**, *10*, 503. [[CrossRef](#)] [[PubMed](#)]
- Riaz, H.; Khan, M.S.; Siddiqi, T.J.; Usman, M.S.; Shah, N.; Goyal, A.; Khan, S.S.; Mookadam, F.; Krasuski, R.A.; Ahmed, H. Association Between Obesity and Cardiovascular Outcomes: A Systematic Review and Meta-analysis of Mendelian Randomization Studies. *JAMA Netw. Open* **2018**, *1*, e183788. [[CrossRef](#)]
- Gregor, M.F.; Hotamisligil, G.S. Inflammatory mechanisms in obesity. *Annu. Rev. Immunol.* **2011**, *29*, 415–445. [[CrossRef](#)]
- Tourniaire, F.; Romier-Crouzet, B.; Lee, J.H.; Marcotrichino, J.; Gouranton, E.; Salles, J.; Malezet, C.; Astier, J.; Darmon, P.; Blouin, E.; et al. Chemokine Expression in Inflamed Adipose Tissue Is Mainly Mediated by NF-kappaB. *PLoS ONE* **2013**, *8*, e66515. [[CrossRef](#)] [[PubMed](#)]

19. Karkeni, E.; Astier, J.; Tourniaire, F.; El Abed, M.; Romier, B.; Gouranton, E.; Wan, L.; Borel, P.; Salles, J.; Walrand, S.; et al. Obesity-associated Inflammation Induces microRNA-155 Expression in Adipocytes and Adipose Tissue: Outcome on Adipocyte Function. *J. Clin. Endocrinol. Metab.* **2016**, *101*, 1615–1626. [[CrossRef](#)] [[PubMed](#)]
20. Ying, W.; Riopel, M.; Bandyopadhyay, G.; Dong, Y.; Birmingham, A.; Seo, J.B.; Ofrecio, J.M.; Wollam, J.; Hernandez-Carretero, A.; Fu, W.; et al. Adipose Tissue Macrophage-Derived Exosomal miRNAs Can Modulate In Vivo and In Vitro Insulin Sensitivity. *Cell* **2017**, *171*, 372–384 e312. [[CrossRef](#)] [[PubMed](#)]
21. Landrier, J.-F.; Derghal, A.; Mounien, L. MicroRNAs in Obesity and Related Metabolic Disorders. *Cells* **2019**, *8*, 859. [[CrossRef](#)]
22. Ruhl, R.; Landrier, J.F. Dietary regulation of adiponectin by direct and indirect lipid activators of nuclear hormone receptors. *Mol. Nutr. Food Res.* **2015**, *60*, 175–184. [[CrossRef](#)] [[PubMed](#)]
23. Olefsky, J.M.; Glass, C.K. Macrophages, inflammation, and insulin resistance. *Annu. Rev. Physiol.* **2010**, *72*, 219–246. [[CrossRef](#)] [[PubMed](#)]
24. Matsushige, K.; Basnet, P.; Hase, K.; Kadota, S.; Tanaka, K.; Namba, T. Propolis protects pancreatic  $\beta$ -cells against the toxicity of streptozotocin (STZ). *Phytomedicine* **1996**, *3*, 203–209. [[CrossRef](#)]
25. Fuliang, H.; Hepburn, H.; Xuan, H.; Chen, M.; Daya, S.; Radloff, S. Effects of propolis on blood glucose, blood lipid and free radicals in rats with diabetes mellitus. *Pharmacol. Res.* **2005**, *51*, 147–152. [[CrossRef](#)]
26. Li, Y.; Chen, M.; Xuan, H.; Hu, F. Effects of encapsulated propolis on blood glycemic control, lipid metabolism, and insulin resistance in type 2 diabetes mellitus rats. *Evid. Based Complement. Altern. Med.* **2012**, *2012*, 981896. [[CrossRef](#)]
27. Kitamura, H. Effects of Propolis Extract and Propolis-Derived Compounds on Obesity and Diabetes: Knowledge from Cellular and Animal Models. *Molecules* **2019**, *24*, 4394. [[CrossRef](#)] [[PubMed](#)]
28. Bankova, V.; Bertelli, D.; Borba, R.; Conti, B.J.; da Silva Cunha, I.B.; Danert, C.; Eberlin, M.N.; Falcão, S.I.; Isla, M.I.; Moreno, M.I.N.; et al. Standard methods for Apis mellifera propolis research. *J. Apic. Res.* **2016**, *58*, 1–49. [[CrossRef](#)]
29. Kosalec, I.; Bakmaz, M.; Pepeljnjak, S.; Vladimir-Knezevic, S. Quantitative analysis of the flavonoids in raw propolis from northern Croatia. *Acta Pharm.* **2004**, *54*, 65–72.
30. Popova, M.; Bankova, V.; Butovska, D.; Petkov, V.; Nikolova-Damyanova, B.; Sabatini, A.G.; Marcazzan, G.L.; Bogdanov, S. Validated methods for the quantification of biologically active constituents of poplar-type propolis. *Phytochem. Anal.* **2004**, *15*, 235–240. [[CrossRef](#)] [[PubMed](#)]
31. Gardana, C.; Scaglianti, M.; Pietta, P.; Simonetti, P. Analysis of the polyphenolic fraction of propolis from different sources by liquid chromatography-tandem mass spectrometry. *J. Pharm. Biomed. Anal.* **2007**, *45*, 390–399. [[CrossRef](#)] [[PubMed](#)]
32. Fenni, S.; Hammou, H.; Astier, J.; Bonnet, L.; Karkeni, E.; Couturier, C.; Tourniaire, F.; Landrier, J.F. Lycopene and tomato powder supplementation similarly inhibit high-fat diet induced obesity, inflammatory response, and associated metabolic disorders. *Mol. Nutr. Food Res.* **2017**, *61*, 1601083. [[CrossRef](#)]
33. Marziou, A.; Philouze, C.; Couturier, C.; Astier, J.; Obert, P.; Landrier, J.F.; Riva, C. Vitamin D Supplementation Improves Adipose Tissue Inflammation and Reduces Hepatic Steatosis in Obese C57BL/6J Mice. *Nutrients* **2020**, *12*, 342. [[CrossRef](#)]
34. Bonnet, L.; Karkeni, E.; Couturier, C.; Astier, J.; Dalifard, J.; Defoort, C.; Svilar, L.; Martin, J.C.; Tourniaire, F.; Landrier, J.F. Gene Expression Pattern in Response to Cholecalciferol Supplementation Highlights Cubilin as a Major Protein of 25(OH)D Uptake in Adipocytes and Male Mice White Adipose Tissue. *Endocrinology* **2018**, *159*, 957–966. [[CrossRef](#)]
35. Landrier, J.F.; Gouranton, E.; El Yazidi, C.; Malezet, C.; Balaguer, P.; Borel, P.; Amiot, M.J. Adiponectin expression is induced by vitamin E via a peroxisome proliferator-activated receptor gamma-dependent mechanism. *Endocrinology* **2009**, *150*, 5318–5325. [[CrossRef](#)]
36. Tourniaire, F.; Musinovic, H.; Gouranton, E.; Astier, J.; Marcotorchino, J.; Arreguin, A.; Bernot, D.; Palou, A.; Bonet, M.L.; Ribot, J.; et al. All-trans retinoic acid induces oxidative phosphorylation and mitochondria biogenesis in adipocytes. *J. Lipid. Res.* **2016**, *56*, 1100–1109. [[CrossRef](#)]
37. Landrier, J.F.; Malezet-Desmoulins, C.; Reboul, E.; Marie Lorec, A.; Josephe Amiot, M.; Borel, P. Comparison of different vehicles to study the effect of tocopherols on gene expression in intestinal cells. *Free Radic. Res.* **2008**, *42*, 523–530. [[CrossRef](#)] [[PubMed](#)]
38. Bonnet, L.; Hachemi, M.A.; Karkeni, E.; Couturier, C.; Astier, J.; Defoort, C.; Svilar, L.; Martin, J.C.; Tourniaire, F.; Landrier, J.F. Diet induced obesity modifies vitamin D metabolism and adipose tissue storage in mice. *J. Steroid. Biochem. Mol. Biol.* **2019**, *185*, 39–46. [[CrossRef](#)]
39. Livak, K.J.; Schmittgen, T.D. Analysis of relative gene expression data using real-time quantitative PCR and the 2(-Delta Delta C(T)) Method. *Methods* **2001**, *25*, 402–408. [[CrossRef](#)] [[PubMed](#)]
40. Cardinault, N.; Tourniaire, F.; Astier, J.; Couturier, C.; Perrin, E.; Dalifard, J.; Seipelt, E.; Mounien, L.; Letullier, C.; Bonnet, L.; et al. Poplar Propolis Ethanolic Extract Reduces Body Weight Gain and Glucose Metabolism Disruption in High-Fat Diet-Fed Mice. *Mol. Nutr. Food Res.* **2020**, *64*, 2000275. [[CrossRef](#)]
41. Zheng, Y.; Wu, Y.; Tao, L.; Chen, X.; Jones, T.J.; Wang, K.; Hu, F. Chinese Propolis Prevents Obesity and Metabolism Syndromes Induced by a High Fat Diet and Accompanied by an Altered Gut Microbiota Structure in Mice. *Nutrients* **2020**, *12*, 959. [[CrossRef](#)]
42. Coppari, R.; Bjorbaek, C. Leptin revisited: Its mechanism of action and potential for treating diabetes. *Nat. Rev. Drug Discov.* **2012**, *11*, 692–708. [[CrossRef](#)]
43. Shin, S.H.; Seo, S.G.; Min, S.; Yang, H.; Lee, E.; Son, J.E.; Kwon, J.Y.; Yue, S.; Chung, M.Y.; Kim, K.H.; et al. Caffeic acid phenethyl ester, a major component of propolis, suppresses high fat diet-induced obesity through inhibiting adipogenesis at the mitotic clonal expansion stage. *J. Agric. Food Chem.* **2014**, *62*, 4306–4312. [[CrossRef](#)]

44. Flachs, P.; Rossmeis, M.; Kuda, O.; Kopecky, J. Stimulation of mitochondrial oxidative capacity in white fat independent of UCP1: A key to lean phenotype. *Biochim. Biophys. Acta* **2013**, *1831*, 986–1003. [[CrossRef](#)] [[PubMed](#)]
45. Landrier, J.F.; Karkeni, E.; Marcotorchino, J.; Bonnet, L.; Tourniaire, F. Vitamin D modulates adipose tissue biology: Possible consequences for obesity? *Proc. Nutr. Soc.* **2016**, *75*, 38–46. [[CrossRef](#)]
46. Marcotorchino, J.; Tourniaire, F.; Astier, J.; Karkeni, E.; Canault, M.; Amiot, M.J.; Bendahan, D.; Bernard, M.; Martin, J.C.; Giannesini, B.; et al. Vitamin D protects against diet-induced obesity by enhancing fatty acid oxidation. *J. Nutr. Biochem.* **2014**, *25*, 1077–1083. [[CrossRef](#)] [[PubMed](#)]
47. Nna, V.U.; Abu Bakar, A.B.; Md Lazin, M.; Mohamed, M. Antioxidant, anti-inflammatory and synergistic anti-hyperglycemic effects of Malaysian propolis and metformin in streptozotocin-induced diabetic rats. *Food Chem. Toxicol.* **2018**, *120*, 305–320. [[CrossRef](#)]
48. Shin, S.; Wakabayashi, J.; Yates, M.S.; Wakabayashi, N.; Dolan, P.M.; Aja, S.; Liby, K.T.; Sporn, M.B.; Yamamoto, M.; Kensler, T.W. Role of Nrf2 in prevention of high-fat diet-induced obesity by synthetic triterpenoid CDDO-imidazolide. *Eur. J. Pharmacol.* **2009**, *620*, 138–144. [[CrossRef](#)]
49. Yu, Z.; Shao, W.; Chiang, Y.; Foltz, W.; Zhang, Z.; Ling, W.; Fantus, I.G.; Jin, T. Oltipraz upregulates the nuclear factor (erythroid-derived 2)-like 2 [corrected](NRF2) antioxidant system and prevents insulin resistance and obesity induced by a high-fat diet in C57BL/6J mice. *Diabetologia* **2011**, *54*, 922–934. [[CrossRef](#)] [[PubMed](#)]
50. El-Magd, N.F.A.; El-Mesery, M.; El-Karef, A.; El-Shishtawy, M.M. Glycyrrhizin ameliorates high fat diet-induced obesity in rats by activating Nrf2 pathway. *Life Sci.* **2018**, *193*, 159–170. [[CrossRef](#)]
51. Nagata, N.; Xu, L.; Kohno, S.; Ushida, Y.; Aoki, Y.; Umeda, R.; Fuke, N.; Zhuge, F.; Ni, Y.; Nagashimada, M.; et al. Glucoraphanin Ameliorates Obesity and Insulin Resistance Through Adipose Tissue Browning and Reduction of Metabolic Endotoxemia in Mice. *Diabetes* **2017**, *66*, 1222–1236. [[CrossRef](#)]
52. Matzinger, M.; Fischhuber, K.; Heiss, E.H. Activation of Nrf2 signaling by natural products-can it alleviate diabetes? *Biotechnol. Adv.* **2018**, *36*, 1738–1767. [[CrossRef](#)]
53. Stahli, A.; Maheen, C.U.; Strauss, F.J.; Eick, S.; Sculean, A.; Gruber, R. Caffeic acid phenethyl ester protects against oxidative stress and dampens inflammation via heme oxygenase 1. *Int. J. Oral. Sci.* **2019**, *11*, 6. [[CrossRef](#)] [[PubMed](#)]
54. Furukawa, S.; Fujita, T.; Shimabukuro, M.; Iwaki, M.; Yamada, Y.; Nakajima, Y.; Nakayama, O.; Makishima, M.; Matsuda, M.; Shimomura, I. Increased oxidative stress in obesity and its impact on metabolic syndrome. *J. Clin. Investig.* **2004**, *114*, 1752–1761. [[CrossRef](#)]
55. Houstis, N.; Rosen, E.D.; Lander, E.S. Reactive oxygen species have a causal role in multiple forms of insulin resistance. *Nature* **2006**, *440*, 944–948. [[CrossRef](#)]
56. Nguyen, T.; Yang, C.S.; Pickett, C.B. The pathways and molecular mechanisms regulating Nrf2 activation in response to chemical stress. *Free Radic. Biol. Med.* **2004**, *37*, 433–441. [[CrossRef](#)] [[PubMed](#)]
57. Owuor, E.D.; Kong, A.N. Antioxidants and oxidants regulated signal transduction pathways. *Biochem. Pharmacol.* **2002**, *64*, 765–770. [[CrossRef](#)]
58. Nair, S.; Li, W.; Kong, A.N. Natural dietary anti-cancer chemopreventive compounds: Redox-mediated differential signaling mechanisms in cytoprotection of normal cells versus cytotoxicity in tumor cells. *Acta Pharmacol. Sin.* **2007**, *28*, 459–472. [[CrossRef](#)]
59. Reagan-Shaw, S.; Nihal, M.; Ahmad, N. Dose translation from animal to human studies revisited. *FASEB J.* **2008**, *22*, 659–661. [[CrossRef](#)]
60. Chiva-Blanch, G.; Badimon, L. Effects of Polyphenol Intake on Metabolic Syndrome: Current Evidences from Human Trials. *Oxidative Med. Cell. Longev.* **2017**, *2017*, 5812401. [[CrossRef](#)]