



An intensive study plot to investigate chestnut tree reproduction

Clément Larue, Teresa Barreneche, Rémy J Petit

► To cite this version:

Clément Larue, Teresa Barreneche, Rémy J Petit. An intensive study plot to investigate chestnut tree reproduction. *Annals of Forest Science*, 2021, 78 (4), pp.90. 10.1007/s13595-021-01104-w . hal-03401914

HAL Id: hal-03401914

<https://hal.inrae.fr/hal-03401914>

Submitted on 25 Oct 2021

HAL is a multi-disciplinary open access archive for the deposit and dissemination of scientific research documents, whether they are published or not. The documents may come from teaching and research institutions in France or abroad, or from public or private research centers.

L'archive ouverte pluridisciplinaire **HAL**, est destinée au dépôt et à la diffusion de documents scientifiques de niveau recherche, publiés ou non, émanant des établissements d'enseignement et de recherche français ou étrangers, des laboratoires publics ou privés.



Distributed under a Creative Commons Attribution 4.0 International License



An intensive study plot to investigate chestnut tree reproduction

Clément Larue^{1,2} · Teresa Barreneche³ · Rémy J. Petit¹

Received: 16 April 2021 / Accepted: 2 September 2021
© The Author(s) 2021

Abstract

Key message Pollination is a key step for fruit production. To provide a tool for future in-depth analysis of pollination in chestnut, we describe in detail a chestnut orchard (location, genotype, phenotype and seed-set of all trees).

Context Chestnuts, which are insect-pollinated trees, have been massively planted around the world for nut production. Orchards are planted with clonal varieties selected from crosses between the European chestnuts (*Castanea sativa*) and Japanese chestnuts (*C. crenata*) or Chinese chestnuts (*C. mollissima*) because these two last species are tolerant to blight and ink diseases.

Aims To characterize chestnut genetic resources and accurately model male and female fitness as well as pollen exchanges in orchards, we characterized all chestnuts of the INRAE chestnut germplasm collection located near Bordeaux (France).

Methods All chestnut trees were geolocated and genotyped using 79 SNP and 98 SSR loci. We scored their flowering phenology using chestnut BBCH scale and precisely described their phenotype (height, diameter at breast height (DBH), canopy diameter...), their capacity to produce pollen (flower type, catkins length...) and their fruit production (number of burrs, seed-set...).

Results We geolocated 275 trees and genotyped 273 of them. We identified 115 unique genotypes and assigned each genotype to species. To assess phenology, we evaluated 244 trees twice a week, for 6 weeks from early June to mid-July. We also described tree phenotypes with 11 variables, pollen production with 5 variables and fruit production with 3 variables. All measures were recorded in 2018 except seed set that was measured two consecutive years, in 2018 and 2019.

Conclusion The data collected is very detailed and allows modelling precisely pollen exchanges between trees. Parts of this data have been successfully published in scientific articles.

Data are available at: <https://data.inrae.fr/dataset.xhtml?persistentId=doi:10.15454/GSJSWW>

Associated metadata are available at: <https://metadata-afs.nancy.inra.fr/geonetwork/srv/fre/catalog.search#/metadata/02c5ca07-1536-4f89-9a0c-9e8d44a91287>

Keywords Fagaceae · *Castanea* sp. · Genotype · SNP · Species assignation · Varietal identification · Phenotype · Flower types · Staminate · Astaminate · Male sterility

Handling Editor: Marianne Peiffer

Contribution of the co-authors Clément Larue: Conceptualization, Investigation, Resources, Formal analysis, Writing – original draft
Teresa Barreneche: Conceptualization, Writing – review & editing
Rémy J. Petit: Conceptualization, Funding acquisition, Supervision, Writing – review & editing.

✉ Clément Larue
clement.larue@inrae.fr

Teresa Barreneche
teresa.barreneche@inrae.fr

Rémy J. Petit
remy.petit@inrae.fr

1 Background

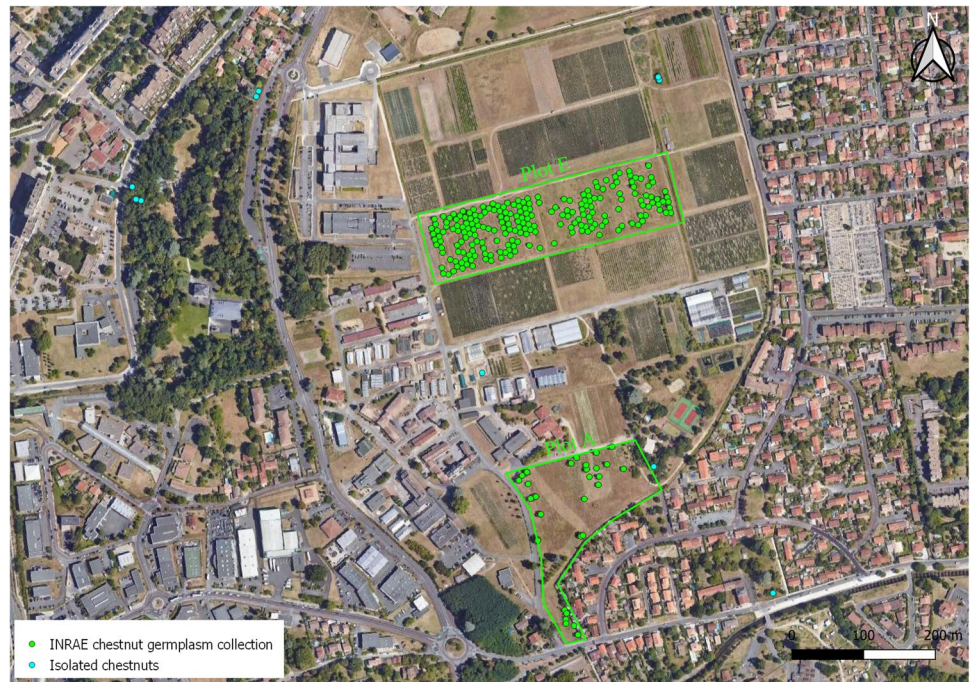
The INRAE chestnut germplasm collection is located in Villenave d'Ornon near Bordeaux (Gironde, France). This collection consists of two experimental plots called “A” and “E” composed of respectively 29 and 215 chestnut trees

¹ Univ. Bordeaux, INRAE, BIOGECO, F-33610 Cestas, France

² INVENIO, Maison Jeannette, F-24140 Douville, France

³ Univ. Bordeaux, INRAE, BFP, F-33140 Villenave d'Ornon, France

Fig. 1 Map of INRAE chestnut genetic collection and of all isolated chestnuts found within a radius of 1 km around the collection



from three species: the European chestnut (*Castanea sativa*), the Japanese chestnut (*Castanea crenata*), and the Chinese chestnut (*Castanea mollissima*), as well as their hybrids. We characterized the chestnut trees from these study plots, other chestnut trees planted across the INRAE experimental station, and all remaining chestnut trees found within a radius of 1 km around the chestnut collection (Fig. 1). We genotyped all these trees with SNP markers, identified 113 genotypes (“Multilocus matches” function from GenAlEx, Peakall and Smouse 2012) and assigned them to chestnut species (STRUCTURE analysis, Pritchard et al. 2000; Larue et al. 2021b). We further described the architecture, male catkins and fruit production of all trees in 2018, and repeated seed set measurements in 2019.

2 Methods

2.1 Identification and geolocation of chestnut trees

We identified 275 chestnuts and geolocated them with a Garmin 64st. Tree positions were verified and corrected using QGIS Software (Qgis Desktop 3.16.4) with satellite photos from IGN BdOrtho. Tree coordinates are expressed in Lambert 93. Each tree received a unique identifier according to its position and this ID is used as reference across all files. There is an introduction register of INRAE chestnut germplasm established since 1950, but for this paper, with some few exceptions for illustration purposes, no attempt

was made to systematically use common names for the varieties.

2.2 Genotyping

Leaves were sampled from all identified trees and stored at -20°C until analysis. DNA isolation was performed with a CTAB custom protocol (Larue et al. 2021b). Samples were characterized using 120 Single Nucleotide Polymorphism markers (SNPs) using Agena MassARRAY Platform (Larue et al. 2021b). We identified all samples having the same multilocus genotype using “Multilocus Matches” function from Genalex 6.503 (Peakall and Smouse 2012) and carefully inspected the results manually. We also computed “Multilocus near matches” to verify that different genotypes differ at multiple markers.

When the unique multilocus genotypes were identified (the genets), we obtained the consensus genotypes by summarizing genotypic data from all ramets of each genet. Finally, we used STRUCTURE software (Pritchard et al. 2000) to assign each ramet to species, as explained in Larue et al. (2021b).

2.3 Phenotyping

The architecture of each ramet was described using the diameter at breast height (at 1.3 m) for all stems > 1 cm, total height and canopy average diameter (in meter). We then calculated the basal surface area (in square meter). We measured the density of male flowers of unisexual catkins

Fig. 2 Bisexual catkins from a male-sterile tree (astaminate): General view (a) and close-up view (b). Most stamens are aborted and do not protrude from male flowers. Bisexual catkins from male-fertile tree (staminate): General view (c) and close-up view (d). Stamens have long filaments and are clearly visible



(number of flowers per square meter) to estimate the capacity of each ramet to produce pollen. We identified flower type (Fig. 2) according to Solignat and Chapa (1975), measured catkins length (in centimeter) and diameter (in millimeter), and estimated relative stamen density. The phenology of all trees was recorded twice a week in late spring of 2018 (from June to mid-July) using a specifically developed standardized scale (Larue et al. 2021c). Briefly, at each visit, each tree receives three scores, one for male flowers of unisexual male catkins, one for female flowers and one for male flowers of bisexual catkins. We estimated burr production (burr number per square meter) in July by counting the number of burrs in the canopy or on the ground underneath each tree. Finally, we collected burrs in the fall and estimated seed set by counting the number of developed nuts per burr (female inflorescences of chestnut trees are composed of three female flowers located side by side). Each flower, if pollinated, produces a fruit surrounded by the pericarp; if pollination fails, the pericarp is still present but remains empty. If the three flowers of an inflorescence are not pollinated, the burr contains three empty nuts.

3 Access to the data and metadata description

Data is available at: <https://data.inrae.fr/dataset.xhtml?persistentId=doi:10.15454/GSJSWW>

Associated metadata are described in a template called “**original_file_metadata.xlsx**”, and are available at: <https://metadata-afs.nancy.inra.fr/geonetwork/srv/fre/catalog.search#/metadata/02c5ca07-1536-4f89-9a0c-9e8d44a91287>

It can be cited as: Larue 2021, “Intensive study site: INRAE chestnut germplasm collection (Domaine de la Grande Ferrade, Villenave d’Ornon)”, <https://doi.org/10.15454/GSJSWW>, Portail Data INRAE, V9, UNF:6:ukulwpHEBuz9kZlrsE8SIQ = [fileUNF].

This dataset is composed of 17 Excel files: 1 file describing all variables entitled “**0_0_Read_Me.xlsx**” and 16 data files, described below:

We labeled and mapped all chestnut trees located inside and outside the INRAE plantations:

- **1_1_List_Chestnuts.xlsx** contains a unique identifier for each chestnut tree.
- **1_2_List_INRAE_Chestnuts_Germplasm_Collection.xlsx** is a list of all chestnut trees that are part of the two plantations, making-up the INRAE germplasm collection (excluding isolated trees that were not planted as part of this germplasm collection).

We genotyped all these chestnut trees at SNP markers:

- **2_1_Genotypes.xlsx** is the corresponding raw data.
- **2_2_Genotypes_Genalex_Input.xlsx** includes the SNP genotypes in Genalex format.

We identified trees having the same multilocus genotype (clones):

– **3_1_Clonal identification.xlsx**

We compiled a list of all unique multilocus genotypes (the genets):

– **4_1_Consensus_genotypes_Genets.xlsx**

We then attributed a genet to each ramet (several ramets of the same genet are grafted on different rootstocks).

– **5_1_Genotypes_Ramets.xlsx**

Using a Bayesian approach (Structure), we assigned each genet to the different gene pools corresponding to different chestnut species.

– **6_1_Species_Identification_Genets.xlsx**

Finally, we described the phenotype of all chestnut trees in the intensive study plot:

- **7_1_Chestnuts_Phenotypes.xlsx** is a description of the architecture of the trees.
- **7_2_Male_Catkins.xlsx** includes a description of the male catkins of the trees.
- **7_3_Phenology.xlsx** We scored the phenology of the trees during spring 2018.
- **7_4_Chestnuts_Production_Estimates.xlsx** We estimated burr production of the trees during summer 2018.
- **7_5_Seed_Set_2018.xlsx** We recorded seed set of the trees in fall 2018.
- **7_6_Seed_Set_2019.xlsx** We also recorded seed set of the trees in fall 2019.

We listed 275 chestnut trees: 244 adult trees in the INRAE germplasm collection (A plot=29 trees/E plot=215 trees), 24 small trees in the nursery, and 7 adult trees outside INRAE campus. All trees are geolocated, but all the young trees of the nursery are represented by a single GPS point. Of the 275 trees identified, two died before collecting leaves for DNA isolation, so we have the genotypes of 273 individuals. We identified 113 unique genotypes (genet), with an average of 2,4 ramets/genet. All this information is summarized in:

– **8_1_Summary.xlsx**

All chestnuts are located on a map:

– **8_2_Map.xlsx**

4 Technical validation

We validated the dataset first by hand and then using numerical and graphical analyses with R software (R software v4.0.4). Laboratory and measure equipment were regularly calibrated, and standards were used for each analysis. Genotyping errors with SNPs using MassArray platform are extremely rare (Guichoux et al. 2011; Larue et al. 2021b), and it is therefore possible to quickly and reliably characterize a large number of samples at low cost. The genetic characterization of this collection is a first step for the creation of a database to describe chestnut cultivars. Users will be able to genotype their samples with the same markers (or a subset of them) and compare their results with the database.

5 Reuse potential and limits

The reuse of the data presented here is simple. The Excel files can be easily imported into R by saving them as.txt or.csv files with minor modifications. Parts of the data were used successfully in previous studies, demonstrating their usefulness and portability. For instance, we successfully performed Structure analyses (Pritchard et al. 2000) with 68 SNPs and 94 SSRs (Larue et al. 2021b), showing that the SNP markers are very reliable to identify clones, species and interspecific hybrids, including advanced hybrids.

The collected phenology data are also very detailed, allowing inter-varietal and interspecific comparisons, as performed in Larue et al. (2021c). In Larue et al. (2021a), we describe in detail the phenology of two ramets for each of eight genets. We show that whereas the phenology of the different genets can vary greatly, it is very repeatable among ramets of the same genet. Seed set measurements also provide valuable data that allow us to highlight differences in probability of fecundation according to the flower types. In particular, we have shown that astaminate trees have a higher seed set than staminate tree (results not shown).

A limitation of the present work is that we have not attempted to provide common names for all accessions studied. This would require a lot of curation, which is under way. Indeed, by genotyping the chestnut collection, we have highlighted problems of varietal identification. In some cases, a single genet has been designated with several cultivar names, a case of synonymy. In other cases, different genets have received the same cultivar name, a case of homonymy. At this point, trees are therefore named only according to their position in the plot.

In the literature, male catkins are classified in four categories according to the length of stamen filaments:

astaminate (no stamens emerging from the flowers), brachystaminate (stamens 1–3 mm), mesostaminate (stamens 3–5 mm) and longistaminate (stamens > 5 mm), with pollen production of the tree strongly depending on flower type. However, variation of pollen production across trees is a continuous trait and these categories have limits.

Note also that when we calculated the seed set, we measured the number of fruits per burr, i.e. the number of flowers in each female inflorescence that give a fruit, but not burr set, i.e. the percentage of female inflorescences that give burrs. The probability of fecundity is therefore overestimated. To better estimate pollination success, it would be necessary to measure both burr set and seed set, which would be very labor-intensive.

Acknowledgements We thank Y. Mellerin (trees mapping and phenotyping), B. Dencausse (trees phenotyping), C. Helou-Bagat (seed set measurements), C. Lalanne (seed set measurements and sample preparation), J. Dudot and M. Martin-Clotte (sample preparation) for their invaluable assistance. We thank X. Capdevielle and INRAE experimental unit Vigne Bordeaux (UEVB) in Villenave d'Ornon for managing of the experimental orchards. SNP development and genotyping were performed at the Genome Transcriptome Facility of Bordeaux (PGTB) with the help of E. Guichoux, M. Massot, A. Delcamp, C. Boury and L. Dubois.

Funding This paper is part of the PhD of CL. This work was supported by ANR funding under CIFRE PhD program to CL. Financial support to Invenio for this project was provided by the Conseil Régional d'Aquitaine for CL PhD work, and as part of the REGINA project to RJP. The PGTB facility where part of the work was conducted benefits from grants from the Conseil Régional d'Aquitaine no. 20030304002FA and 20040305003FA, from the European Union FEDER no. 2003227 and from Investissements d'Avenir (ANR-10-EQPX-16-01).

Declarations

Conflict of interest The authors declare that they have no known competing financial interests or personal relationships that could have appeared to influence the work reported in this paper.

Open Access This article is licensed under a Creative Commons Attribution 4.0 International License, which permits use, sharing, adaptation, distribution and reproduction in any medium or format, as long as you give appropriate credit to the original author(s) and the source, provide a link to the Creative Commons licence, and indicate if changes were made. The images or other third party material in this article are included in the article's Creative Commons licence, unless indicated otherwise in a credit line to the material. If material is not included in the article's Creative Commons licence and your intended use is not permitted by statutory regulation or exceeds the permitted use, you will

need to obtain permission directly from the copyright holder. To view a copy of this licence, visit <http://creativecommons.org/licenses/by/4.0/>.

References

- Barreneche T, Botta R, Robin C (2019) Advances in breeding of chestnuts. In: Achieving sustainable cultivation of tree nuts, Burleigh Dodds Science Publishing Limited, Cambridge (UK). Burleigh Dodds Science Publishing, pp 317–348
- Chybicki JJ, Oleksa A, Dering M (2021) Identification of determinants of pollen donor fecundity using the hierarchical neighborhood model. *Mol Ecol Resour* 21:781–800. <https://doi.org/10.1111/1755-0998.13307>
- Guichoux E, Lagache L, Wagner S et al (2011) Current trends in microsatellite genotyping. *Mol Ecol Resour* 11:591–611. <https://doi.org/10.1111/j.1755-0998.2011.03014.x>
- Klein EK, Carpentier FH, Oddou-Muratorio S (2011) Estimating the variance of male fecundity from genotypes of progeny arrays: evaluation of the Bayesian forward approach: *Estimating male fecundity and pollen dispersal*. *Methods Ecol Evol* 2:349–361. <https://doi.org/10.1111/j.2041-210X.2010.00085.x>
- Klein EK, Desassis N, Oddou-Muratorio S (2008) Pollen flow in the wildservice tree, *Sorbus torminalis* (L.) Crantz. IV. Whole inter-individual variance of male fecundity estimated jointly with the dispersal kernel. *Mol Ecol* 17:3323–3336. <https://doi.org/10.1111/j.1365-294X.2008.03809.x>
- Larue C (2021) Intensive study site: INRAE chestnut germplasm collection (Domaine de la Grande Ferrade, Villenave d'Ornon), <https://doi.org/10.15454/GSJSWW>, Portail Data INRAE, V9, UNF:6:ukulwpHEBuz9kZlrsE8SIQ== [fileUNF]
- Larue C, Austruy E, Basset G, Petit RJ (2021a) Revisiting pollination mode in chestnut (*Castanea* spp.): an integrated approach. *Botany Letters* 1–25. <https://doi.org/10.1080/23818107.2021.1872041>
- Larue C, Guichoux E, Laurent B et al (2021b) Development of highly validated SNP markers for genetics analyses of chestnut species. *Conservation Genetics Resources*. In Press
- Larue C, Barreneche T, Petit RJ (2021c) Efficient monitoring of phenology in chestnuts. *Sci Hortic* 281:109958. <https://doi.org/10.1016/j.scienta.2021.109958>
- Peakall R, Smouse PE (2012) GenAlEx 6.5: genetic analysis in Excel. Population genetic software for teaching and research—an update. *Bioinformatics* 28:2537–2539. <https://doi.org/10.1093/bioinformatics/bts460>
- Pritchard JK, Stephens M, Donnelly P (2000) Inference of population structure using multilocus genotype data. *Genetics* 155:945–959
- Solignat G, Chapa J (1975) Biologie florale du châtaignier. In: Châtaignes et marrons. Invuflec

Publisher's note Springer Nature remains neutral with regard to jurisdictional claims in published maps and institutional affiliations.