



HAL
open science

Rheological properties of the enzymatic casein gel: dependence with the ion distribution in casein micelles

Julien Bauland, Marie-Hélène Famelart, Fanny Guyomarc'H, Antoine Bouchoux, Thomas Croguennec

► To cite this version:

Julien Bauland, Marie-Hélène Famelart, Fanny Guyomarc'H, Antoine Bouchoux, Thomas Croguennec. Rheological properties of the enzymatic casein gel: dependence with the ion distribution in casein micelles. Journées Plénières du GDR SLAMM (Solliciter LA Matière Molle), CNRS. INRAE, Nov 2021, Biarritz, France. hal-03428277

HAL Id: hal-03428277

<https://hal.inrae.fr/hal-03428277>

Submitted on 15 Nov 2021

HAL is a multi-disciplinary open access archive for the deposit and dissemination of scientific research documents, whether they are published or not. The documents may come from teaching and research institutions in France or abroad, or from public or private research centers.

L'archive ouverte pluridisciplinaire **HAL**, est destinée au dépôt et à la diffusion de documents scientifiques de niveau recherche, publiés ou non, émanant des établissements d'enseignement et de recherche français ou étrangers, des laboratoires publics ou privés.



Distributed under a Creative Commons Attribution - NonCommercial - NoDerivatives 4.0 International License

➤ Rheological properties of the enzymatic casein gel:
dependence with the ion distribution in casein micelles

BAULAND J.¹, FAMELART M.H.¹, GUYOMARC'H F.¹, BOUCHOUX
A.², CROGUENNEC T.¹

¹ STLO, INRAE, Institut Agro, 35042, Rennes, France.

² TBI, Université de Toulouse, CNRS, INRAE, INSA, Toulouse, France



UMR STLO, Rennes, France

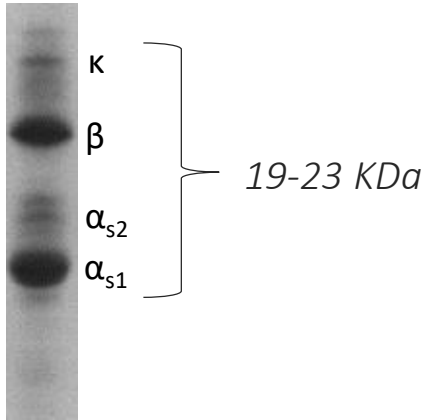
PhD project

“Role of intra and inter casein micelle
interactions for the structure and rheology
of the enzymatic milk gel”

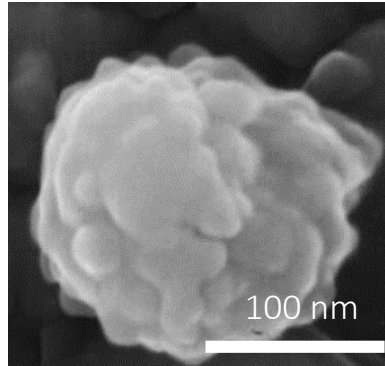
Introduction

Milk is a colloidal suspension

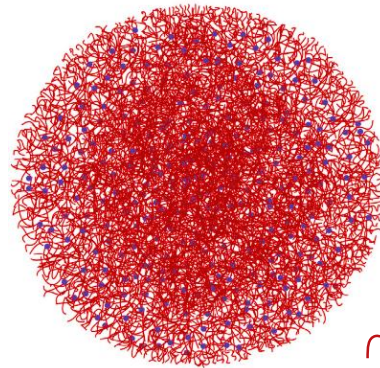
Caseins = phosphoproteins = main protein fraction of milk



Casein "micelles" = casein + CaHPO₄ + H₂O



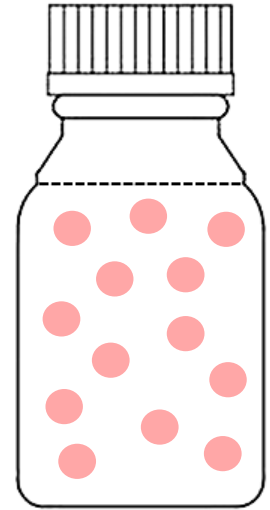
~200 000 KDa



schematic view

casein
CaHPO₄

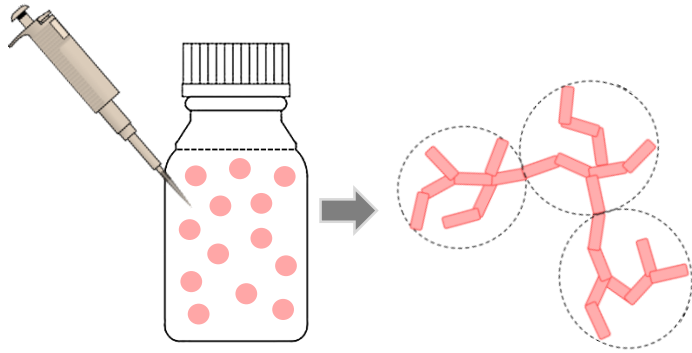
Milk = suspension



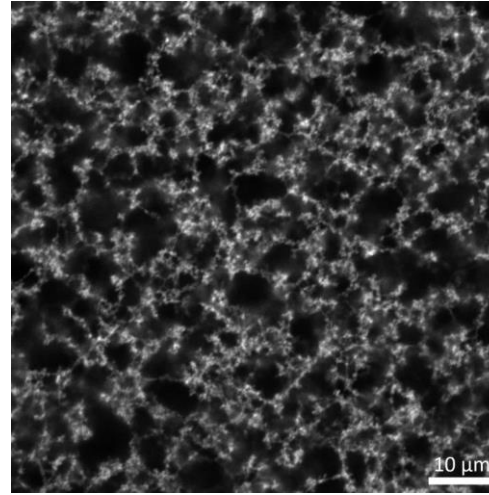
$\varphi = 0.1$

Introduction

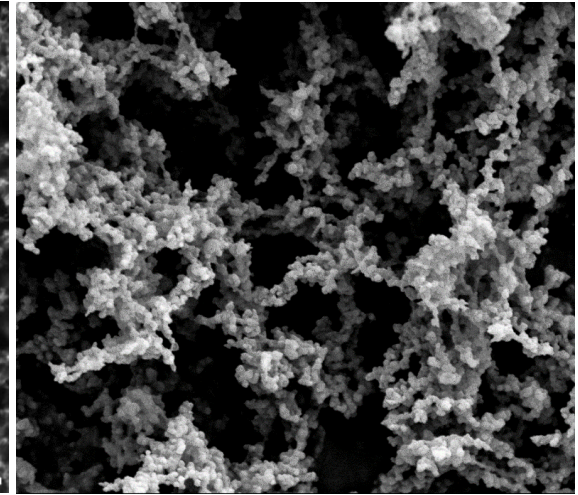
The enzymatic casein gel



Microscopic structure



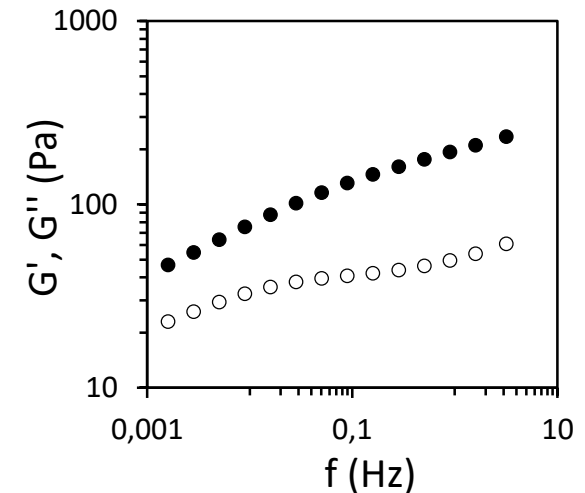
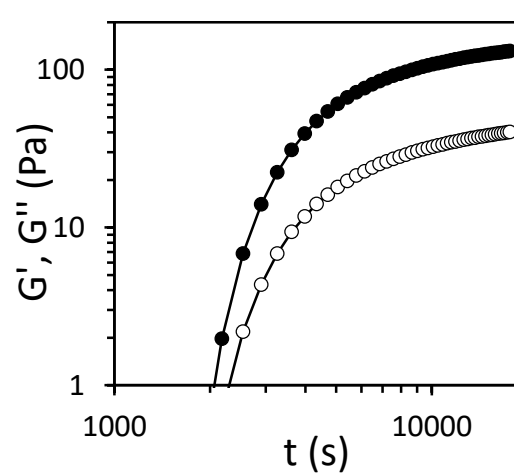
LS confocal



SEM

- cluster-cluster aggregation
- fractal organization ($D_f = 2.2-2.3$)
- physical (non-covalent interactions)
- transient / aging /
microsyneresis (phase separation)

Linear rheology



$f=0.1$ Hz ; $\gamma=0.01$; $T=30^\circ\text{C}$

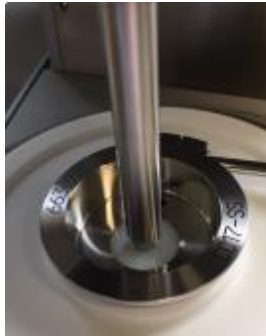


INRAE

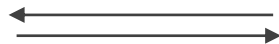
GDR SLAMM
03/11/2021

Introduction

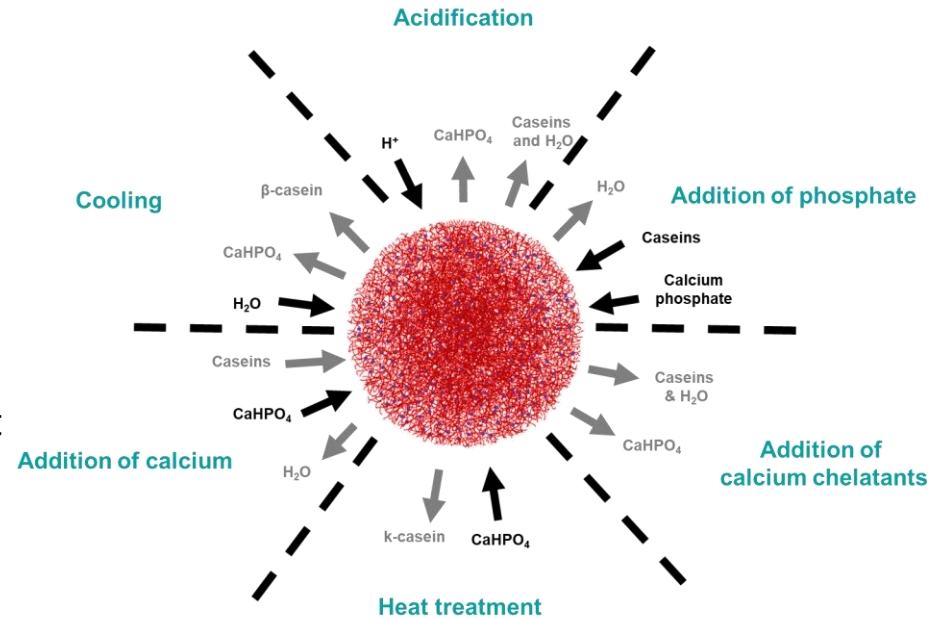
Casein micelle is a dynamic object



Gel rheology

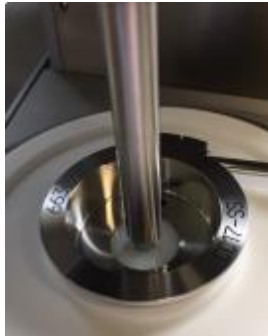


Mineral environment of casein micelle

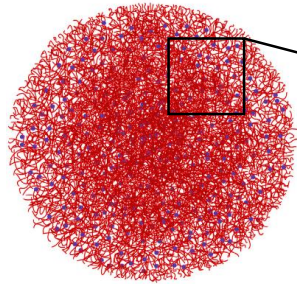
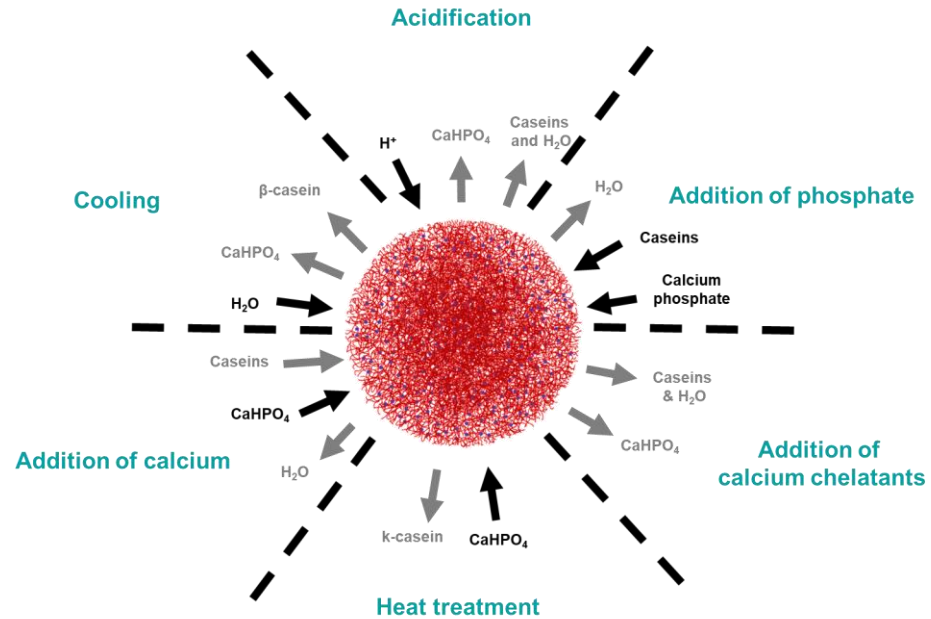


Introduction

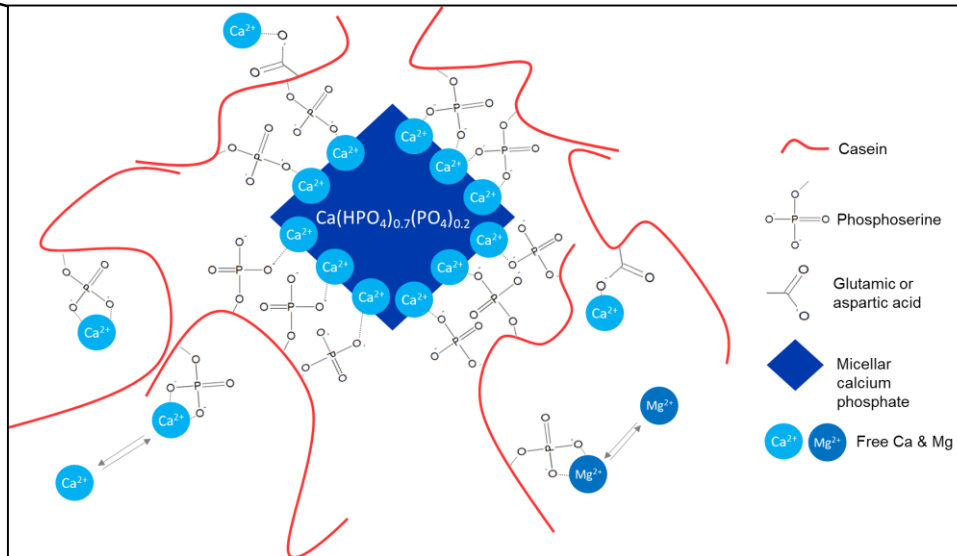
Casein micelle is a dynamic object



Gel rheology
 Mineral environment
 of casein micelle

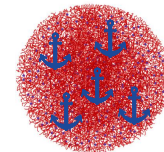


Casein micelle

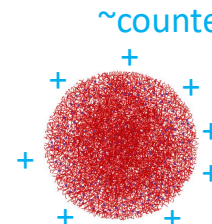


Calcium distribution in casein micelle

Micellar calcium phosphate (MCP) ~crosslink intra



Bound cations (C-bound) ~counter ions



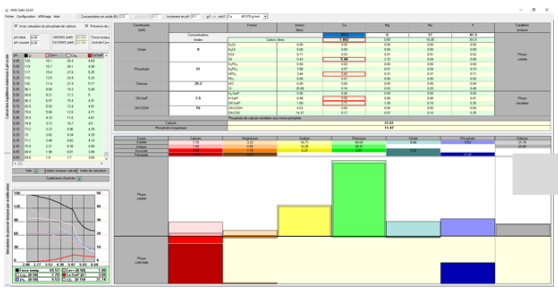
Results

Direct link between cations distribution and rheology

- CaCl₂
- MgCl₂
- Na₂HPO₄
- CitNa₃
- HCl



Salt addition
(19 conditions)

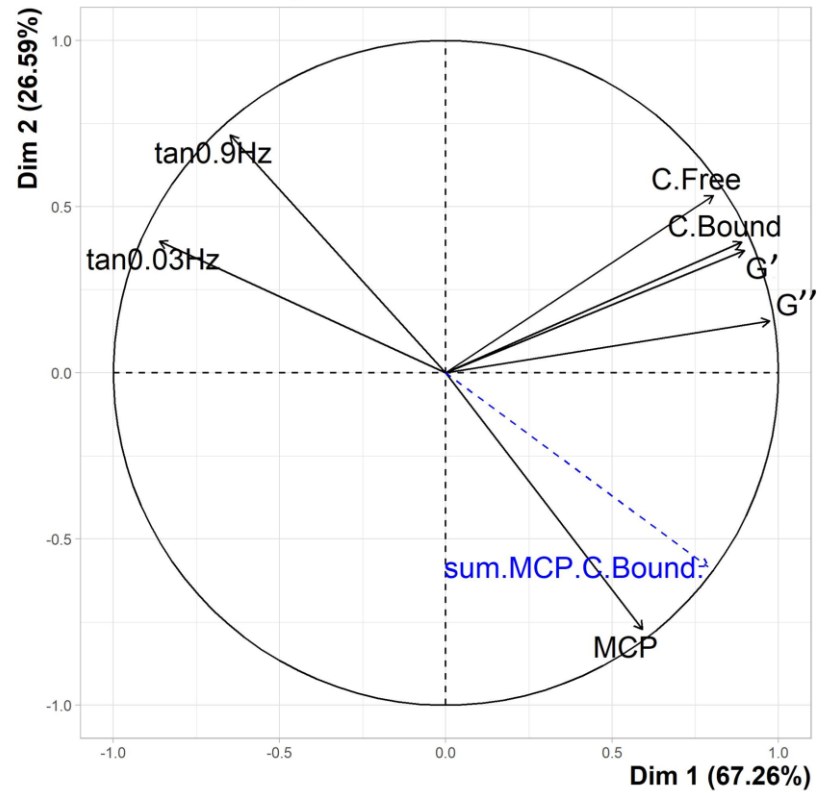
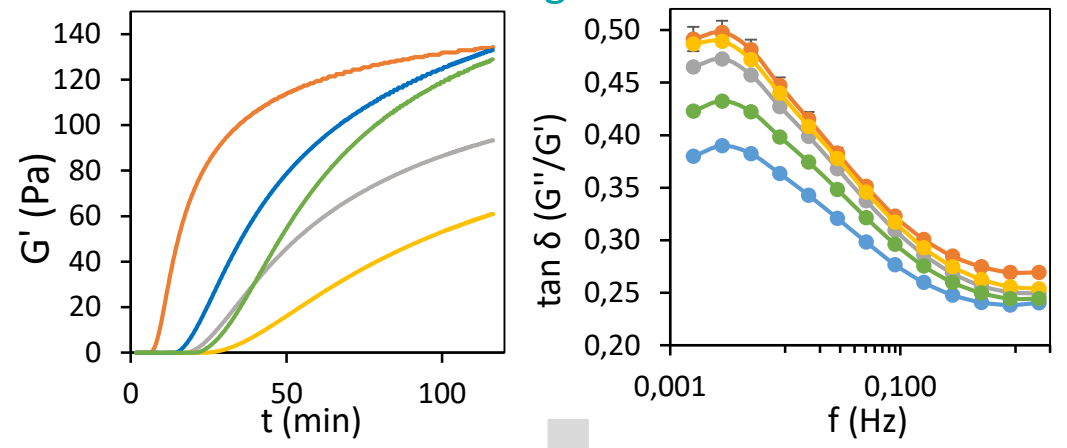


A_i, C_i

Calculation of mineral distribution

Holt (2004), Mekmene et al. (2009)

Rheological data



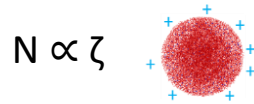
Principal component analysis



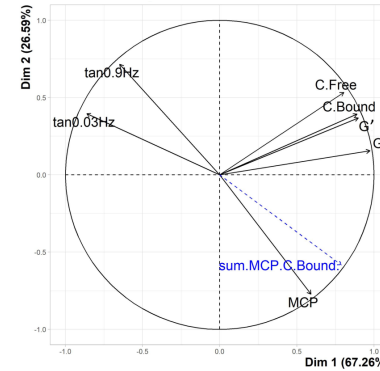
Results

Direct link between cations distribution and rheology

- G'_{\max} , G''_{\max} = positively correlated to the bound-C



- $\tan\delta$ = negatively correlated to the MCP content

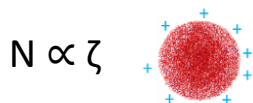


→ Can we explain the link between the gel viscoelasticity and intra-colloid interactions?

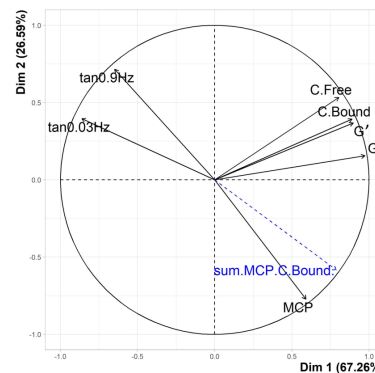
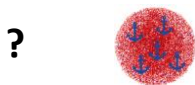
Results

Direct link between cations distribution and rheology

- G'_{max}, G''_{max} = positively correlated to the bound-C



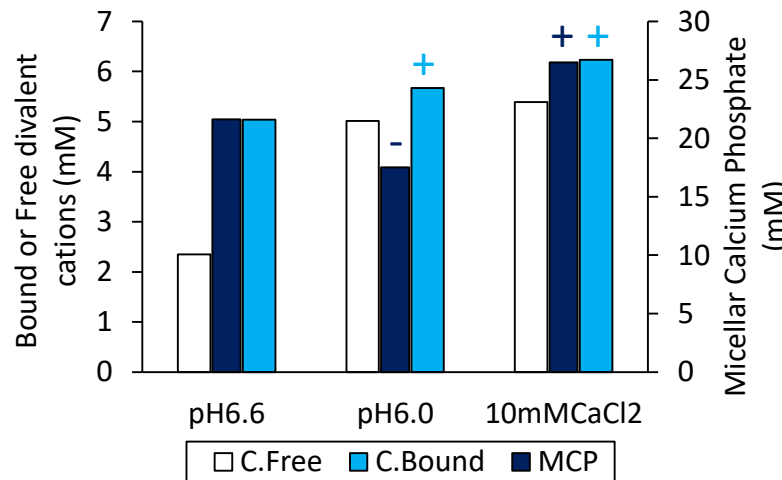
- $\tan\delta$ = negatively correlated to the MCP content



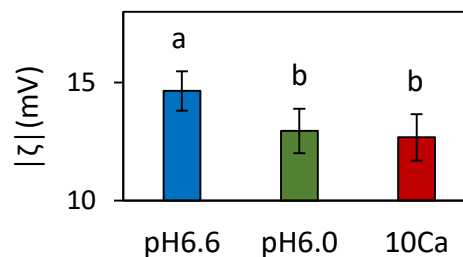
→ Can we explain the link between the gel viscoelasticity and intra-colloid interactions?

- 3 samples with different MCP content

- pH6.6 *control*
- pH6.0 *MCP-depleted*
- 10 mM CaCl₂ (pH6.3) *MCP-enriched*



Cations distribution in casein micelle

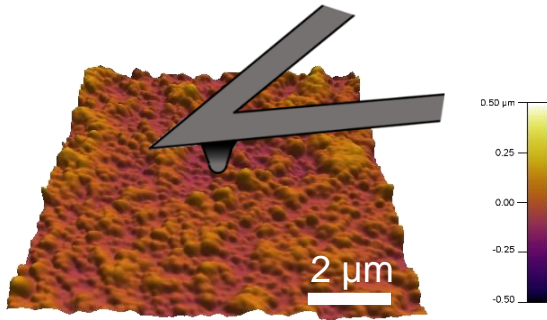


Zeta potential

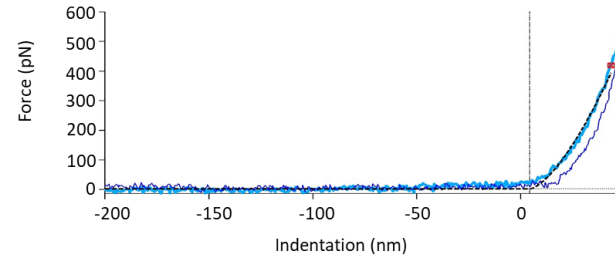


Results

Mechanical properties of individual colloids studied by AFM



Single layer of casein micelles



Force curve

N=10,000 force curves over 4-7 chips	MCP-depleted	Control	MCP-enriched	p-value
Young modulus E^* (MPa)	0.36 ± 0.24^a	0.44 ± 0.35^b	0.56 ± 0.40^c	2.2×10^{-16}

Average value of Young moduli

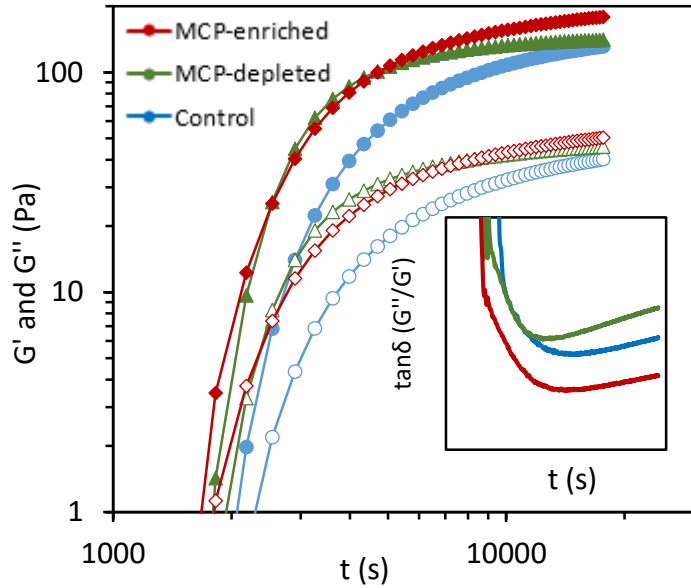
- E^* is correlated with the MCP content



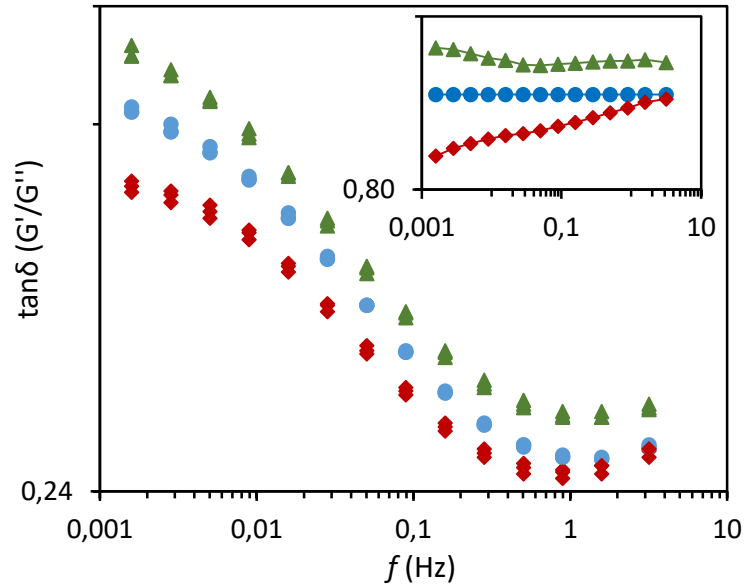
$$E^*_{\text{colloid}} \gg G_{\text{gel}}$$

Results

Rheological properties



Kinetics of gelation
 $f=0.1$ Hz ; $\gamma=0.01$; $T=30^\circ\text{C}$



Frequency sweep
 $\gamma=0.01$; $T=30^\circ\text{C}$

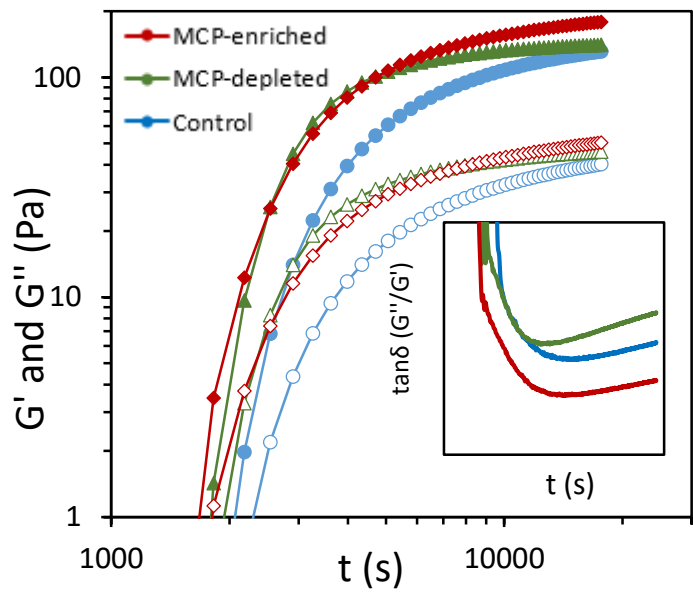
Ferry (1980)
 $H(\tau) \cdot d \ln(\tau)$

van Vliet et al. (1991)
 $\tan \delta \sim H(\tau)_{\tau=1/\omega}$

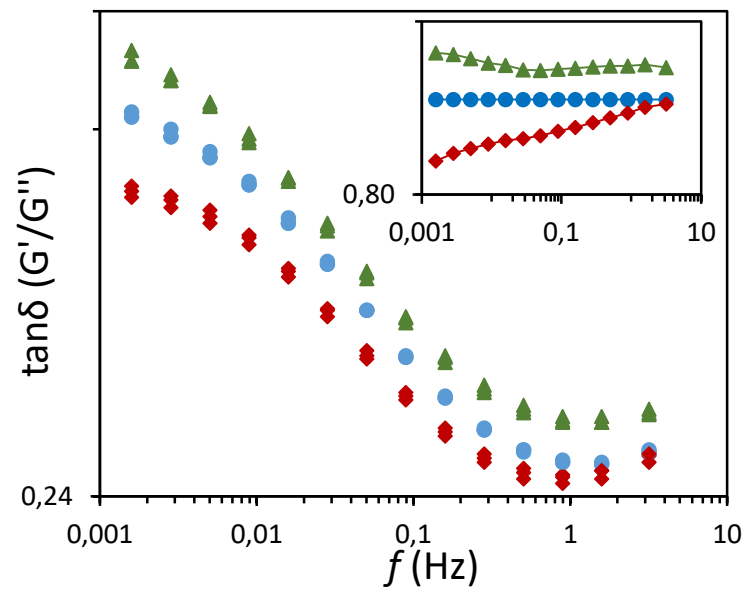


Results

Rheological properties



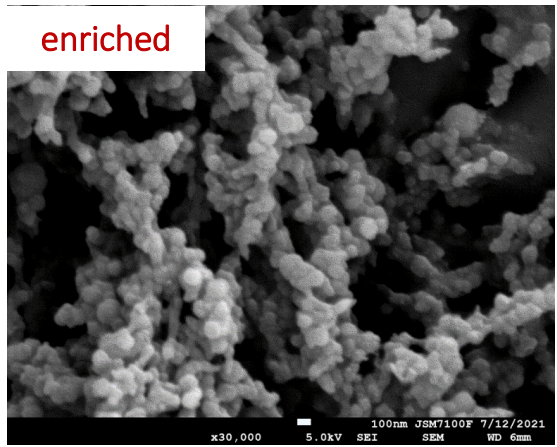
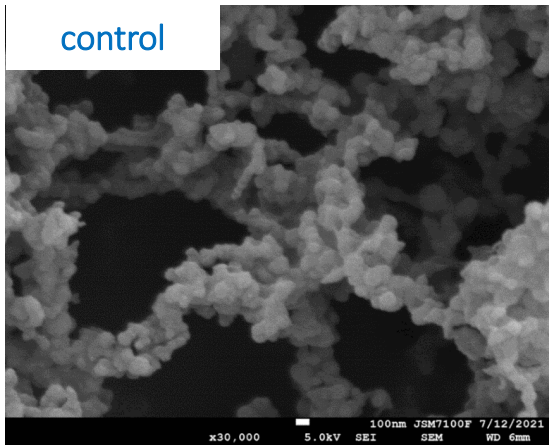
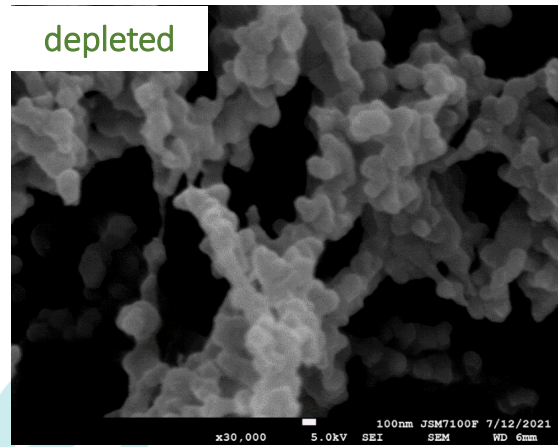
Kinetics of gelation
 $f=0.1 \text{ Hz}$; $\gamma=0.01$; $T=30^\circ\text{C}$



Frequency sweep
 $\gamma=0.01$; $T=30^\circ\text{C}$

Ferry (1980)
 $H(\tau) \cdot d \ln(\tau)$

van Vliet et al. (1991)
 $\tan \delta \sim H(\tau)_{\tau=1/\omega}$



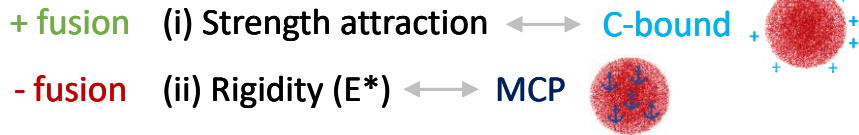
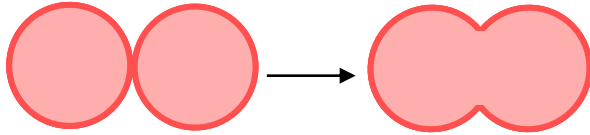
SEM images ($t = 9,000 \text{ s}$)

> Results

Rheological properties

- Fusion = motor of rearrangement → stress in network

van Vliet et al. (1991)
Mellema et al. (2002)

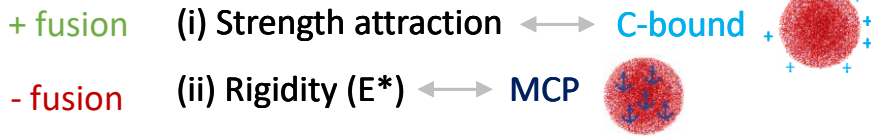
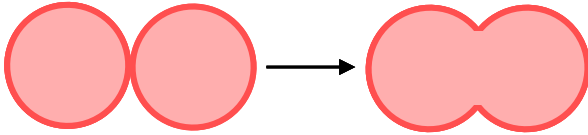


Results

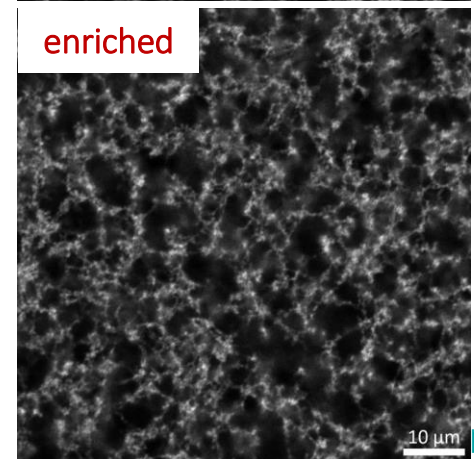
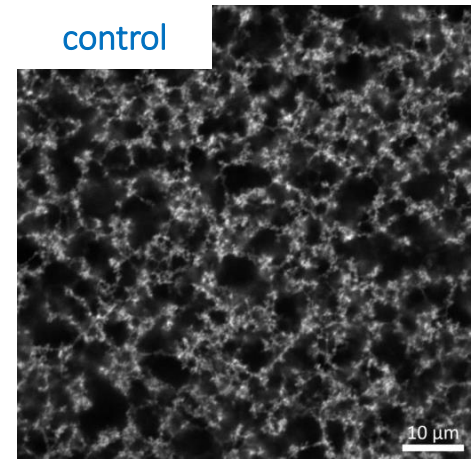
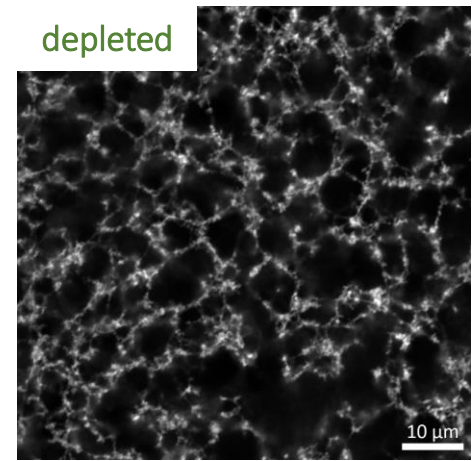
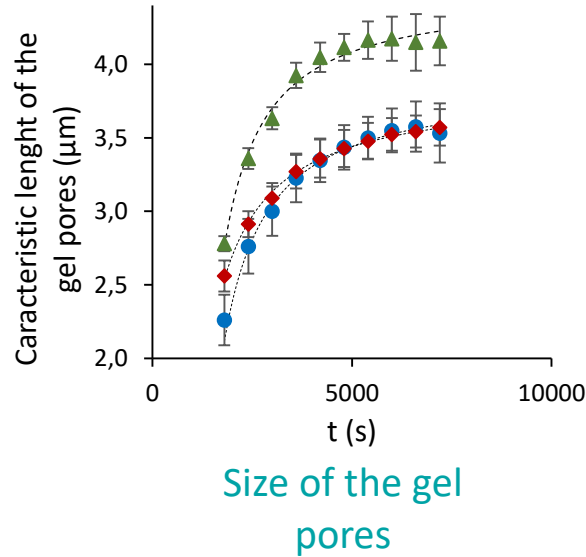
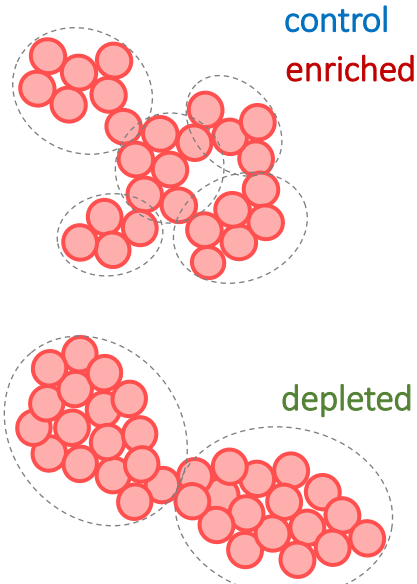
Rheological properties

- Fusion = motor of rearrangement → stress in network

van Vliet et al. (1991)
Mellema et al. (2002)



- Differences of fusion rate / particle distribution



- Heterogeneous = Stress concentration = further reorganization

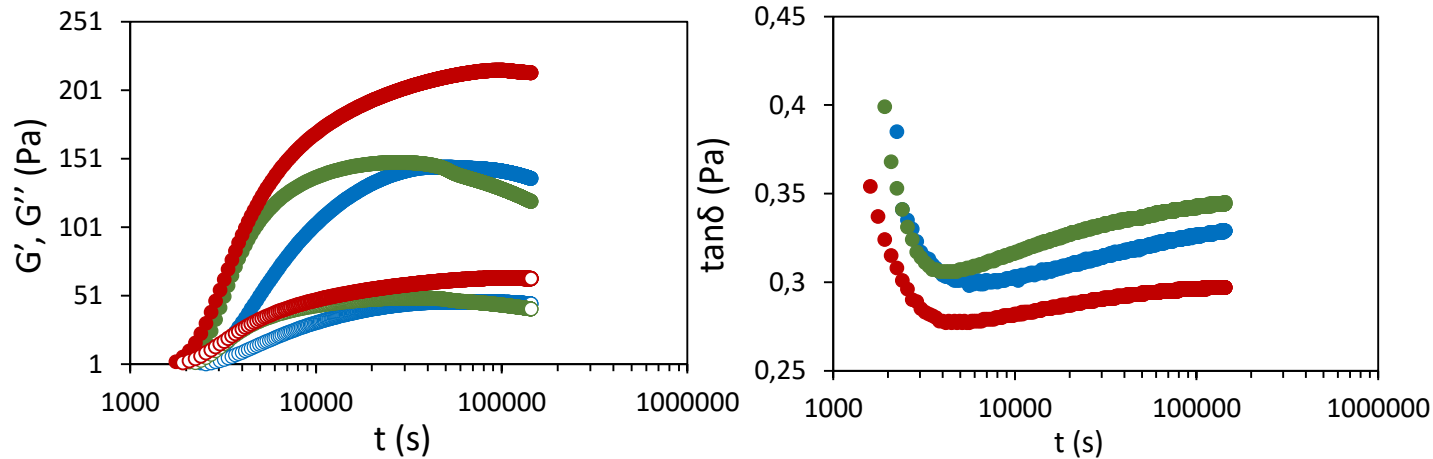
INRAE

GDR SLAMM
03/11/2021

Results

Discussion

- Is this picture consistent? / Lack of theoretical framework



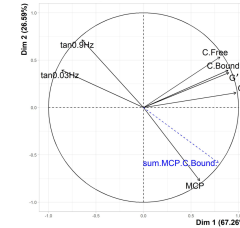
- Different kinetics of phase separation
 - Creation and relaxation of internal stress?

- What can be learned from the aging dynamic? \longleftrightarrow Glassy soft matter systems

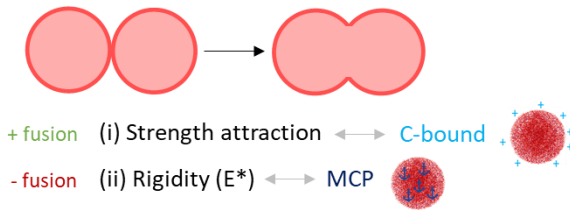
Cipelletti and Ramos (2005)

➤ Conclusion

- Industrial window for enzymatic casein gel processing
→ Gel rheology correlated to 2 cation forms in casein micelle



- 2 cations form → different effect on particle fusion → structure heterogeneity



- Need of theoretical work to study aging dynamics / internal stress relaxation

Thanks for your attention!

Thanks to Lazhar Benyahia and Mathieu Leocmach!

> References

- Bahri, A., Martin, M., Gergely, C., Pugnière, M., Chevalier-Lucia, D., & Marchesseau, S. (2017). Atomic Force Microscopy Study of the Topography and Nanomechanics of Casein Micelles Captured by an Antibody. *Langmuir*, 33(19), 4720–4728.
- Cipelletti, L., Ramos, L. (2005). Slow dynamics in glassy soft matter. *J. Phys. Cond. Mat.* 17:R253-R85
- Ferry, J. D. (1980). Viscoelastic properties of polymers, 3rd edition. *Wiley, New York*, 672.
- Holt, C. (2004). An equilibrium thermodynamic model of the sequestration of calcium phosphate by casein micelles and its application to the calculation of the partition of salts in milk. *European Biophysics Journal*, 33(5), 421–434.
- Mekmene, O., Le Graët, Y., & Gaucheron, F. (2009). A model for predicting salt equilibria in milk and mineral-enriched milks. *Food Chemistry*, 116(1), 233–239.
- Mellema, M., Walstra, P., van Opheusden, J. H. ., & van Vliet, T. (2002). Effects of structural rearrangements on the rheology of rennet-induced casein particle gels. *Advances in Colloid and Interface Science*, 98(1), 25–50.
- Uricanu, V. I., Duits, M. H. G., & Mellema, J. (2004). Hierarchical networks of casein proteins: An elasticity study based on atomic force microscopy. *Langmuir*, 20(12), 5079–5090.
- van Vliet, T., van Dijk, H. J. M. M., Zoon, P., & Walstra, P. (1991). Relation between syneresis and rheological properties of particle gels. *Colloid & Polymer Science*, 269(6), 620–627.