



HAL
open science

Invasion disharmony in the global biogeography of native and non-native beetle species

Andrew M Liebhold, Rebecca M Turner, Rachael E Blake, Cleo Bertelsmeier, Ekehard G Brockerhoff, Helen F Nahrung, Deepa S Pureswaran, Alain Roques, Hanno Seebens, Takehiko Yamanaka

► **To cite this version:**

Andrew M Liebhold, Rebecca M Turner, Rachael E Blake, Cleo Bertelsmeier, Ekehard G Brockerhoff, et al.. Invasion disharmony in the global biogeography of native and non-native beetle species. *Diversity and Distributions*, 2021, 27 (11), pp.2050 - 2062. 10.1111/ddi.13381 . hal-03441511

HAL Id: hal-03441511

<https://hal.inrae.fr/hal-03441511>

Submitted on 22 Nov 2021











HAL is a multi-disciplinary open access archive for the deposit and dissemination of scientific research documents, whether they are published or not. The documents may come from teaching and research institutions in France or abroad, or from public or private research centers.

L'archive ouverte pluridisciplinaire **HAL**, est destinée au dépôt et à la diffusion de documents scientifiques de niveau recherche, publiés ou non, émanant des établissements d'enseignement et de recherche français ou étrangers, des laboratoires publics ou privés.



Distributed under a Creative Commons Attribution 4.0 International License

Invasion disharmony in the global biogeography of native and non-native beetle species

Andrew M. Liebhold^{1,2}  | Rebecca M. Turner³  | Rachael E. Blake⁴  |
 Cleo Bertelsmeier⁵  | Eckehard G. Brockerhoff⁶  | Helen F. Nahrung⁷  |
 Deepa S. Pureswaran⁸  | Alain Roques⁹  | Hanno Seebens¹⁰  |
 Takehiko Yamanaka¹¹ 

¹USDA Forest Service Northern Research Station, Morgantown, WV, USA

²Faculty of Forestry and Wood Sciences, Czech University of Life Sciences Prague, Praha 6 – Suchbát, Czech Republic

³Scion (New Zealand Forest Research Institute), Christchurch, New Zealand

⁴National Socio-Environmental Synthesis Center, Annapolis, MD, USA

⁵University of Lausanne, Lausanne, Switzerland

⁶Swiss Federal Institute for Forest, Snow and Landscape Research WSL, Birmensdorf, Switzerland

⁷University of the Sunshine Coast, Brisbane, Qld, Australia

⁸Canadian Forest Service, Québec, QC, Canada

⁹INRAE, UR 0633, Zoologie Forestière, Orléans, France

¹⁰Senckenberg Biodiversity and Climate Research Center, Frankfurt, Germany

¹¹Research Center for Agricultural Information Technology, National Agriculture and Food Research Organization, Tsukuba, Japan

Correspondence

Andrew M. Liebhold, USDA Forest Service Northern Research Station, 180 Canfield St., Morgantown, WV 26505, USA.
 Email: Andrew.Liebhold@usda.gov

Funding information

New Zealand's Biological Heritage, Grant/Award Number: C09X1501; Bundesministerium für Bildung und Forschung, Grant/Award Number:

Abstract

Aim: The concept of “island disharmony” has been widely applied to describe the systematic over- and under-representation of taxa on islands compared to mainland regions. Here, we explore an extension of that concept to biological invasions. We compare biogeographical patterns in native and non-native beetle (Coleoptera) assemblages from around the world to test whether beetle invasions represent a random sample of species or whether some families are more prone to invade than others.

Location: Global.

Methods: Numbers of non-native beetle species established in ten regions worldwide were compared with the land area of each region. The distribution of species among families was compared with the distribution among families for all species native to the same region and with the distribution among families for the global pool of all known beetle species. Ordination analysis was used to characterize differences among native and non-native assemblages based upon the distribution of species among families.

Results: We report a total of 1,967 non-native beetle species across all ten regions, and a classic log–log relationship between numbers of species per region and land area though relationships are generally stronger for native assemblages. Some families (e.g., Dermestidae and Bostrichidae) are over-represented and others (e.g., Carabidae, Scarabaeidae and Buprestidae) are under-represented in non-native assemblages. The distribution of species among families is generally similar among native assemblages with greatest similarities among nearby regions. In contrast, non-native species assemblages are more similar to each other than to native species assemblages.

Main conclusions: Certain families are over-represented, and others are under-represented in non-native beetle assemblages compared to native assemblages, indicating “invasion disharmony” in the global representation of beetle families. Similarities in composition among non-native assemblages may reflect unobserved

This is an open access article under the terms of the Creative Commons Attribution License, which permits use, distribution and reproduction in any medium, provided the original work is properly cited.

© 2021 Her Majesty the Queen in Right of Canada. *Diversity and Distributions* published by John Wiley & Sons Ltd. Reproduced with the permission of the Minister of Natural Resources. This article has been contributed to by US Government employees and their work is in the public domain in the USA.

01LC1807A; Fakulta Lesnická a Drevarská, Česká Zemědělská Univerzita v Praze, Grant/Award Number: CZ.02.1.01/0.0/0.0/16_019/0000803; Schweizerischer Nationalfonds zur Förderung der Wissenschaftlichen Forschung; International Programs, US Forest Service; National Science Foundation, Grant/Award Number: DBI-1639145

Editor: Markus Franzén

associations with invasion pathways and life-history traits that shape invasion success of different insect groups.

KEYWORDS

Coleoptera, composition, disharmony, family, insect, invasion, native, non-native

1 | INTRODUCTION

“Island disharmony,” originally termed by Carlquist (1965), describes the systematic over- or under-representation of certain taxonomic groups on islands compared to mainland source regions. This phenomenon has been repeatedly observed when comparing the flora and fauna of oceanic islands with that of mainland assemblages and is believed to result from selective assembly mechanisms, such as filtering based on dispersal capacity, permitting only a subset of mainland species to successfully colonize islands (Gillespie & Roderick, 2002; König et al., 2020). Traits other than dispersal capability may also act as filters selecting species and include environmental tolerances and dependencies on other species (Taylor et al., 2019; Weigelt et al., 2015). Given the potentially analogous relationship of community assembly via island colonization with assembly via biological invasions (Burns, 2015), it is logical to investigate whether a similar phenomenon of disharmony can be observed in comparing native and non-native species assemblages. Despite their analogous relationship, there are also fundamental differences between biological invasions and island colonizations so we can anticipate that filtering mechanisms driving invasion disharmony may differ from those that drive island disharmony. For example, species traits that promote associations with invasion pathways may increase the chances of species invasions (Kiritani & Yamamura, 2003; Meurisse et al., 2019). Here, we investigate the existence of invasion disharmony by analysing the biogeography of beetle (Coleoptera) invasions worldwide.

Insects are the most diverse group of animals in the world. Approximately 1 million species have been described and estimates of total extant species (including undescribed species) range from 4 to 10 million (Chapman, 2009; Stork, 2018; Stork et al., 2015; Zhang, 2013). Among insects, the Coleoptera are the largest order. About 400,000 beetle species have been described and the total number in the world is estimated between 850,000 and 4 million (Bouchard et al., 2017; Nielsen & Mound, 1999; Ślipiński et al., 2011; Zhang, 2013). The evolutionary success of the Coleoptera can be attributed to their diversity of life histories, which include herbivory, predation and detritivory across terrestrial and aquatic habitats (Bouchard et al., 2017).

Given the extent of their diversity, it comes as no surprise that non-native insect species outnumber those from all other animal groups; Seebens et al. (2018) report 10 times as many non-native insect species established worldwide than non-native species in any

other animal taxon. Along with the Hemiptera and the Hymenoptera, the Coleoptera are one of the most species-rich orders among the non-native fauna of various world regions (Liebhold et al., 2016; Wheeler & Hoebeke, 2009). The dominance of Coleoptera among non-native insects appears to reflect their dominance in the entire global fauna; the proportional representation of Coleoptera species in non-native insect assemblages is generally similar to their representation in native species assemblages (Liebhold et al., 2016; Yamanaka et al., 2015).

While most non-native Coleoptera are relatively innocuous in their invaded ranges, a few species cause extensive damage and are considered serious pests. For example, the rice weevil, *Sitophilus oryzae*, is native to India but has invaded most world regions, sometimes damaging stored rice such that it has no value as food (Longstaff, 1981). The Colorado potato beetle, *Leptinotarsa decemlineata*, is a major invasive agricultural pest; the species had a limited native range in western North America but has now invaded virtually all regions of the Northern Hemisphere where potatoes are grown, sometimes causing massive crop damage which has occasionally resulted in famines (Clark, 2007). Some non-native beetle species have serious impacts on biodiversity and other non-market values. For example, the emerald ash borer, *Agrilus planipennis*, is spreading across North America and Eastern Europe, causing widespread mortality of ash trees, *Fraxinus* spp. This damage is anticipated to cost billions of dollars to homeowners and municipalities and extensive loss of biodiversity in organisms associated with ash trees (Herms & McCullough, 2014).

A key question to understanding and managing invasions is the quantification of the risk that species may invade new areas in the future. Such risk analysis is critical to the implementation of biosecurity practices aimed at excluding invasions of new species (Robinson et al., 2017). Even though many species of Coleoptera are known invaders and have caused extensive damage, information is lacking on invasion probabilities for different groups within the Coleoptera. Thus, the discovery of invasion disharmony may provide crucial information that would lead to more effective risk analysis for setting biosecurity policies targeting these insects. Here, we analyse comprehensive lists of non-native Coleoptera species from several regions in the world, comparing numbers of non-native species among families and the proportional representation of families in native and non-native assemblages. Our objective here is to use this information to quantify invasion disharmony and assess the relative invasion risk among various beetle families. Specifically, we test

whether beetle invasions represent a random sample of the order or whether some families are more prone to invade. We hypothesize that much like island disharmony, an analogous filtering of species occurs during biological invasions that produces systematic compositional differences between native and non-native assemblages. We also test whether the family-level composition of species invading a given region is similar to the composition of native species in that region or whether they more closely resemble the composition of other invading assemblages.

2 | METHODS

2.1 | Compilation of data on numbers of native and non-native species

We assembled lists of non-native Coleoptera species from 10 regions worldwide, namely North America (excluding Mexico), Japan, the Okinawa and Ogasawara Islands, the Hawaiian Islands, South Korea, Europe (including the European part of Russia), New Zealand, Australia and the Galapagos Islands. These lists can be downloaded from Dryad at <https://doi.org/10.5061/dryad.tx95x69z1>. Species lists originated from sources listed in Appendix S1 and were updated from various miscellaneous sources (e.g., recent publications and websites). A full list of species can be downloaded from Dryad (<https://doi.org/10.5061/dryad.tx95x69z1>). These 10 regions were selected because they represent the few regions worldwide with existing comprehensive lists of non-native beetles. The regions vary considerably in size but cover extensive geographical diversity (e.g., the Northern and Southern Hemispheres, tropical and temperate climates, continental and island regions). We acknowledge that these regions mostly coincide with countries with highly developed economies, which may introduce unavoidable bias. Furthermore, we recognize that these lists of non-native species may actually be slightly incomplete; there typically are lags between establishment and discovery and reporting of new non-native species (Essl et al., 2011; Morimoto et al., 2019). Species that were known to have been intentionally introduced (e.g., biological control agents) were not included in our analyses.

Lists from each region were standardized to overcome duplication due to the existence of synonyms and misspellings, by performing taxonomic “cleaning” so that all species names and higher-level taxon designations were based on a single taxonomic classification system. This was performed using the GBIF taxonomic database (GBIF Secretariat, 2019) and the “taxize” package in R (Chamberlain & Szöcs, 2013). Code used for this taxonomic cleaning can be downloaded from the Zenodo repository (<https://doi.org/10.5281/zenodo.4555787>). A total of 91% of Coleoptera species user-supplied names were recognized (including as synonyms or misspellings) by GBIF. For the remainder (177 species), standardization was performed manually via searches of alternative databases and manual researching of names.

Like in many other taxonomic groups, there are frequent changes in the higher-level taxonomy (family groupings) within the Coleoptera. For consistency, we adopted the classification of Bouchard et al. (2011) with three exceptions. Dryophthoridae and Brachyceridae were merged into the Curculionidae, Passandridae were merged into the Cucujidae, and Megalopodidae were merged into the Chrysomelidae to align with source datasets.

The composition of species assemblages was characterized at the family level. Native and non-native assemblages from each region were summarized by the number of species per family. To accomplish this, we used our non-native species lists to calculate numbers of species per family for each region. We also compared the composition of non-native assemblages to the composition of native assemblages from the same region. Numbers of species per family for native assemblages were compiled from sources given in Appendix S1. We also compared the composition of non-native assemblages to that of all known world Coleoptera species, hereafter referred to as “world described species.” The composition of the world Coleoptera was based on a published list of estimated numbers of all described Coleoptera species in the world by family (Bouchard et al., 2017).

Based on the lists of non-native species in each of the 10 regions, we calculated the total number of non-native species in each family pooled among all regions combined. To limit the stochastic effects of smaller families, we restricted our analyses to include the 25 families with at least 10 species known to have invaded at least one of the 10 regions.

2.2 | Species–area relationships

To analyse the influence of varying region sizes on species numbers, species–area relationships were explored by plotting numbers of species per regional assemblage vs. regional land area. Plots were made using log scales for both axes, and the slope and R^2 were calculated for the linear regression relating log species numbers to log land area. Species–area plots were generated using the total number of native and non-native Coleoptera species from each region. Similarly, species–area plots were generated using numbers of native and non-native species in the Curculionidae and the Staphylinidae (the two most species-rich Coleoptera families) from each region.

2.3 | Proportional representation by families

For each of the 10 regions, we compared numbers of species per family in the non-native assemblage vs. the number of native species of the same family in that region and vs. the total number of known species per family in the world. We calculated the expected number of species per family assuming an equivalent proportion of species in each family as in the reference assemblage (i.e., the native species assemblage). To illustrate the variation in each region, we

created scatterplots of numbers of non-native species per family vs. numbers of species in the same family for the reference assemblage. We plotted a line showing expected numbers under equivalent representation and a region around this line indicating where the probability that a family was over- or under-represented (because they fell outside of the boundaries) was less than or equal to $\alpha = 0.01$. We used a Bonferroni correction for the multiple comparisons, so the boundaries of this region were calculated as the upper and lower quantiles of the binomial distribution such that $(1 - \alpha / m) \times 100\%$ of the distribution lay within the boundary, where m is the number of families compared.

We also investigated whether there was a tendency of families of certain feeding groups to be over- or under-represented. To accomplish this, we first classified each family into one of three feeding groups (herbivores, predators and scavengers) based on their dominant life history described in Arnett and Thomas (2001) and Arnett et al. (2002). Each family was then categorized according to whether they had more than the expected number of non-native species (in the 10 regions pooled) with reference to the world described species assemblage. Pearson's chi-squared test was used to test whether the proportion of families with more than the expected number of non-natives was significantly dependent on their feeding group.

2.4 | Similarity between native and non-native assemblages

To quantify similarity among native and non-native assemblages, we computed a full correlation matrix between all native and non-native assemblages using numbers of species per family. As is characteristic of community composition data, distributions of numbers of species per family were highly skewed. Thus, for the correlation and ordination analyses (described below), species richness of each family in each of the assemblages was transformed using a Hellinger transformation (square root of the number of species per family divided by the total number of species in all families) (Legendre & Gallagher, 2001).

TABLE 1 Numbers of native and non-native Coleoptera species (includes species in all 144 families) among world regions

Region	Non-Native species	Native species	Ratio
North America (excluding Mexico)	915	25,106	0.036
Japan	172	9,726	0.018
Okinawa	97	2,625	0.037
Ogasawara Islands	50	321	0.156
Hawaiian Islands	482	1,891	0.255
South Korea	65	2,306	0.028
Europe (including European Russia)	434	27,430	0.016
New Zealand	419	5,456	0.077
Australia	317	28,263	0.011
Galapagos Islands	86	338	0.254
All regions	1,967		
World		385,602	

2.5 | Ordination analysis

We employed a direct ordination, redundancy analysis (RDA), to characterize differences among all assemblages (both native and non-native) based upon the distribution of species among families in each assemblage (ter Braak, 1986; Legendre & Legendre, 1998). Analyses were again based on Hellinger-transformed values. Following ordination, each assemblage was plotted using their scores for the first two RDA axes; the position of each assemblage in this space provided a map of compositional similarities (or dissimilarities) among assemblages. We also plotted the RDA scores of each family in order to visualize how the differences among assemblages were related to the relative dominance of different families. The effect of status (native or non-native) and of regions (including both the pooled set of all non-native species and the world described species) was evaluated by a permutation test based on 999 permutations. Neither crossed nor nested effects were considered. The RDA and permutation tests were computed using the "vegan" package in R (Oksanen et al., 2020).

3 | RESULTS

3.1 | Numbers of species per region

There were 1,967 non-native beetle species recorded among all regions. North America had the most recorded non-native beetle species followed by the Hawaiian Islands, Europe and New Zealand (Table 1). The region with the fewest recorded non-native beetle species was the Galapagos Islands followed by the Ogasawara Islands and South Korea. Australia, North America and Europe each reported slightly more than 25,000 native Coleoptera species while the Galapagos and Ogasawara Islands both reported the fewest native species, with just slightly more than 300. Given this information, the Hawaiian Islands had the largest number of non-native species relative to the number of native species though the ratio was nearly as high for the Galapagos Islands. Australia, Japan and Europe had the fewest non-native species relative to the number of native species.

3.2 | Species–area relationships

Much of the variation among regions in total numbers of both native and non-native Coleoptera species was explained by land area. Total numbers of non-native species per region followed a classic linear species–area relationship in a log–log plane (Figure 1b). A similar pattern was observed for numbers of native species (Figure 1a), as well

as for both native and non-native Staphylinidae and Curculionidae (Figure 1c–f). The slopes and R^2 values of native assemblages were generally greater than those of non-native assemblages though none of the pairs of slopes were different based on confidence intervals formed by $\pm 1.96 * SE$. Among the assemblages shown in Figure 1, land area explained the least variation for numbers of Staphylinidae species.

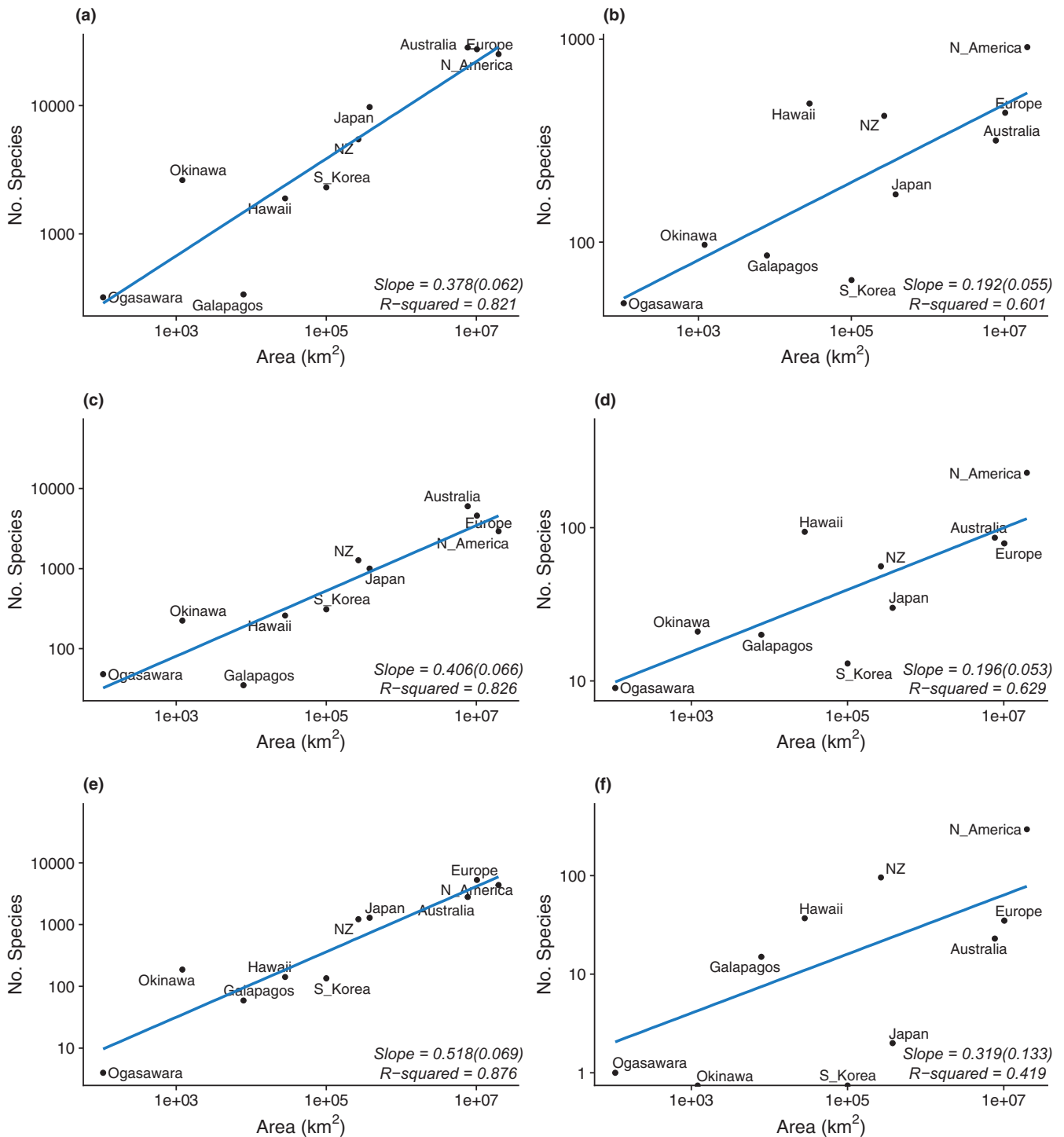


FIGURE 1 Species–area relationships showing counts of (a) all native Coleoptera in each of the 10 regions, (b) all non-native Coleoptera in each of the 10 regions, (c) native Curculionidae in each region, (d) non-native Curculionidae in each region, (e) native Staphylinidae in each region and (f) non-native Staphylinidae in each region. Numbers in parentheses after slopes are the standard errors

3.3 | Proportional representation by families

The frequency distributions of species among families for the global pool of all described Coleoptera species and for the non-native assemblage (across all regions) are shown in Figure 2. With the exception of the Attelabidae and the Meloidae, all of the 25 most species-rich Coleoptera families from the world described fauna are present in the assemblage of all non-native species. For both native and non-native assemblages, the Curculionidae and Staphylinidae were the most species-rich families. However, among non-native species, there were slightly more Curculionidae than Staphylinidae.

Overall, there was a moderately strong similarity ($R = .84$ based on square-root-transformed species counts for the 25 most species-rich families) in the relative composition (numbers of species within each family) of the Coleoptera between the world described fauna and all non-native species. Approximately two thirds of all families (e.g., Coccinellidae, Hydrophilidae, Anthribidae, Oedemeridae) have numbers of non-native species (among all regions) within the proportions expected from their frequencies in the world fauna (Figure 3). However, the families Carabidae, Cerambycidae, Buprestidae, Tenebrionidae and Scarabaeidae were under-represented among non-native species. Further, several other families, including the

FIGURE 2 Numbers of Coleoptera species within each of the top 25 families (families with at least 10 non-native species worldwide), comparing the total described species in the world to the total number of non-native species pooled among the 10 regions

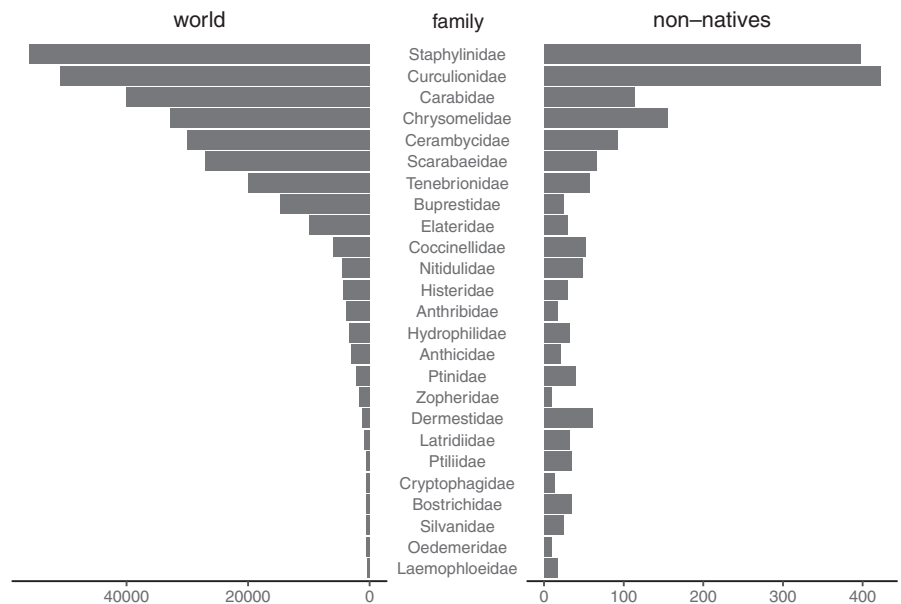
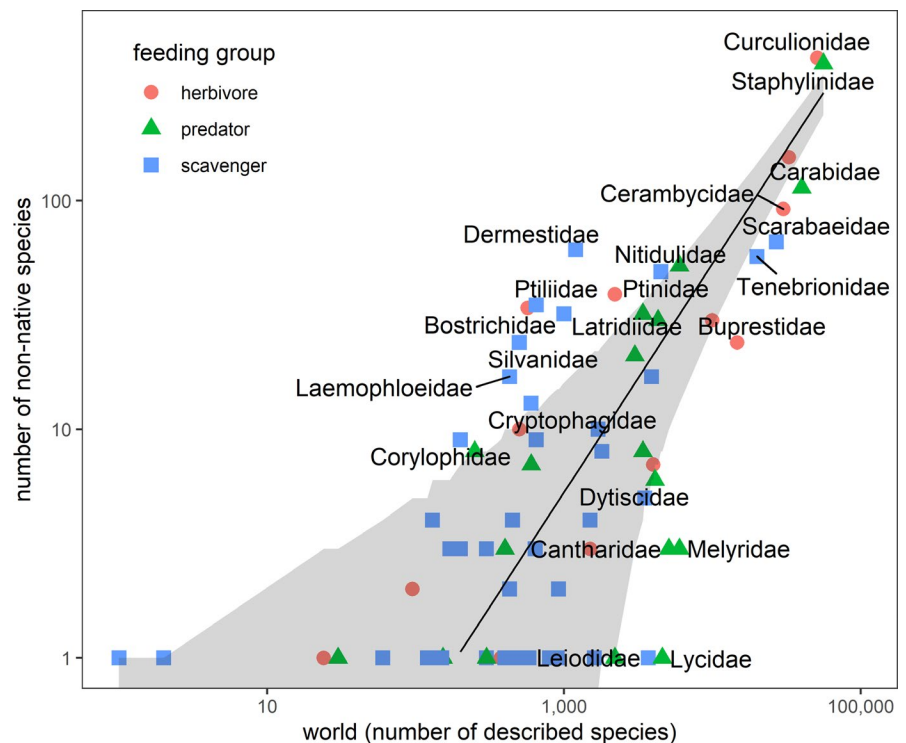


FIGURE 3 Scatterplot showing the total number of non-native species per family pooled among all 10 regions vs. numbers of species per family for the world described species, for families with at least one non-native species. Families are coloured by their principle feeding group. The black line shows the expected number of non-native species per family if they were in the same proportions as in the world described species. Grey shading shows the range outside of which families would be deemed to be over- or under-represented at the $\alpha = 0.01$ level, assuming a binomial distribution and using a Bonferroni correction to account for the number of families compared. The labelled families are the most extreme—those more or less than the boundaries of the grey region



Dermestidae, Bostrichidae, Ptiliidae and Latridiidae, were over-represented (Figure 3). There was no consistent trend for families that were predominantly herbivores, predators or scavengers being over- or under-represented in the non-native assemblage. While Figure 3 suggests a weak trend of over-representation of predominantly scavenger families, the distribution of feeding groups among those families with more non-native species than the expected was not significantly different to the distribution among families with fewer species than expected (Pearson's chi-squared test, $p = .87$, for families with at least one established species, where the expected number of non-native species per family is proportional to the number in the world described species).

Relationships between the composition of native and non-native assemblages in each region (Figure 4 and Figure S2.2) were similar to the relationship described above for all regions (Figure 3). The Curculionidae was the most species-rich family among non-native assemblages from all regions except North America and New Zealand, where the Staphylinidae were most frequent, and the Ogasawara Islands, where Cerambycidae were most frequent. The East Asian regions Japan, Ogasawara and Okinawa islands, and South Korea all had few recorded non-native Staphylinidae species, although a dearth of staphylinids was also evident in the native fauna for Ogasawara, Okinawa and South Korea (Figure 4). The representation of Staphylinidae in Australia and Hawaii is also proportionally lower than that in the world fauna (Figure S2.1). Even for the

native assemblages, there were several uniquely diverse families in certain regions, such as the Cerambycidae in the Ogasawara Islands, Tenebrionidae in the Galapagos Islands and the Histeridae in the Ogasawara Islands. Summary tables of numbers of species per family for native and non-native assemblages in each region can be downloaded from Dryad (<https://doi.org/10.5061/dryad.tx95x69z1>).

Among assemblages from individual regions, the same families were often under- or over-represented in non-native assemblages compared to native assemblages (Figure S2.2). For example, the Dermestidae were over-represented and the Carabidae under-represented in most non-native assemblages compared to native assemblages from the same region. However, there were several unique characteristics of the composition of non-native assemblages from specific regions. For example, the Hawaiian Islands had an unusually large number of Chrysomelidae species and unusually low number of Ptinidae (Figure S2.2).

3.4 | Similarity between native and non-native assemblages

Correlations in numbers of species per family between assemblages describe similarities in the composition of assemblages, both native and non-native (Figure 5). Overall, there was more similarity among native assemblages than among non-native assemblages and

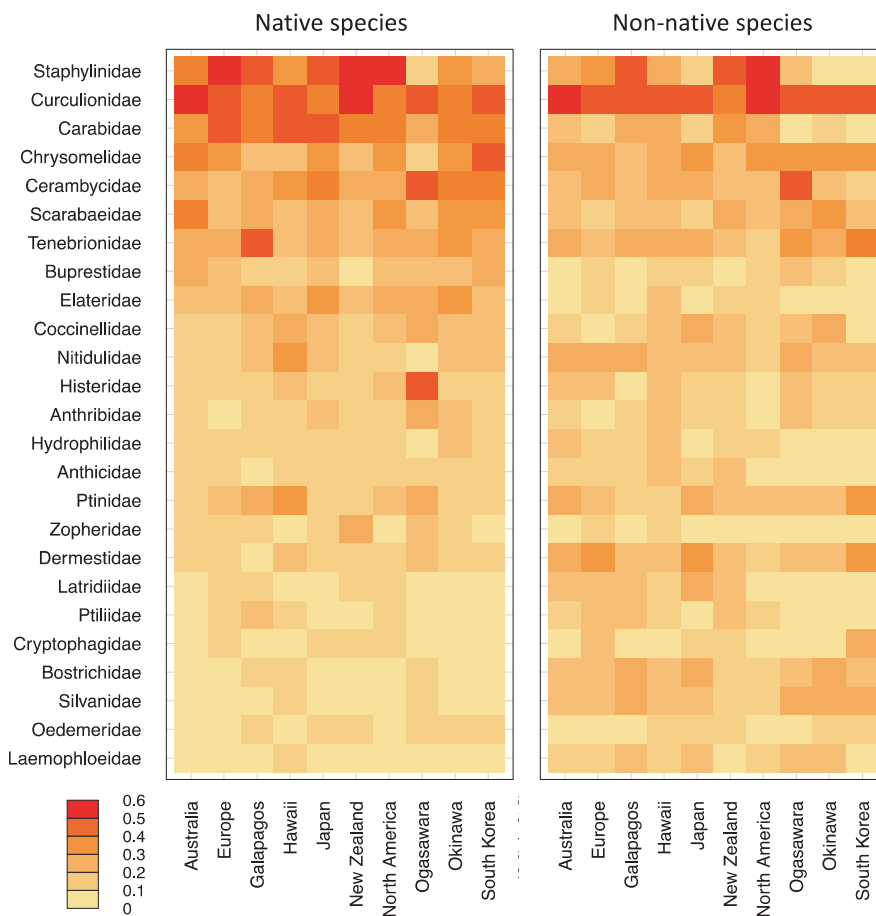


FIGURE 4 Heatmap of number of species within each family for native and non-native Coleoptera assemblages from each region. Numbers are expressed as square root (number of species in family / total number of Coleoptera species in assemblage)

the native assemblages were most similar to the world described species. Among native assemblages, those of North America and Europe were the most similar (Figure 5). Native assemblages from some of the East Asian regions, such as Japan, Korea and Okinawa, were also quite similar to each other. Among non-native assemblages, Australia, New Zealand, North America and the Galapagos were generally similar to each other and the East Asian regions of Japan, Ogasawara, Okinawa and South Korea were also similar to each other.

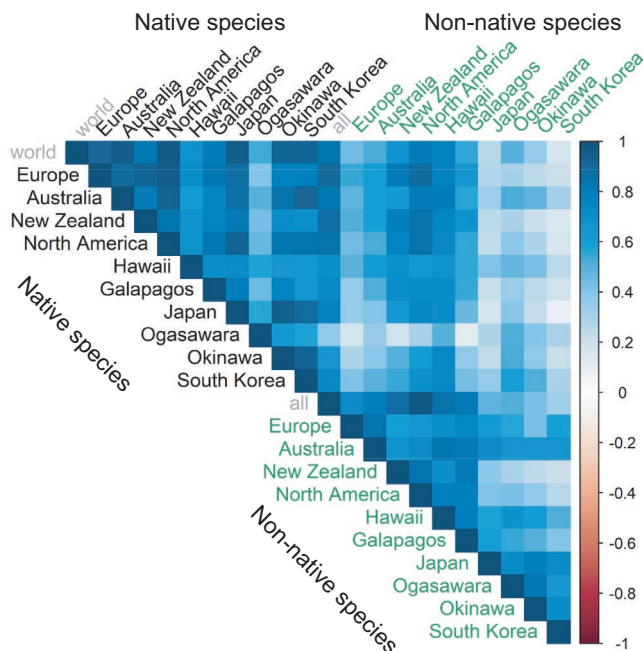


FIGURE 5 Correlation matrix based on numbers of species per beetle family for each native (black) and non-native (green) assemblage. Also included are the assemblage of all described Coleoptera species ("world") and the assemblage of all non-native species pooled from all 10 regions ("all")

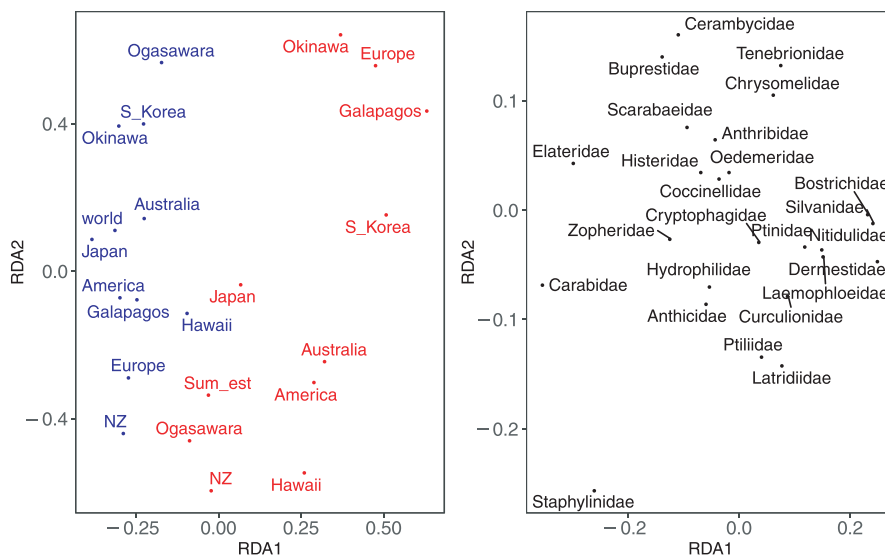
3.5 | Ordination analysis

Ordination analysis (RDA) indicated that the family-level composition of non-native assemblages was distinct from that of native assemblages since the native and non-native assemblages generally fell on opposite sides of the ordination space, primarily defined by the first axis (Figure 6a). The significance of native vs. non-native status was confirmed by the permutation test (Table 2). However, there was no significant effect of region which indicates that native and non-native assemblages from the same region are not more similar to each other than to other assemblages. Even though native assemblages in the East Asian regions Japan, S. Korea, Okinawa and Ogasawara Islands all had similar composition, non-native assemblages were not generally similar among these regions (Figure 6a). Likewise, the family-level composition was similar among North America, Europe, Galapagos and Hawaii native assemblages, but there was generally little similarity among the non-native assemblages from these same regions (Figure 6a). Loadings for RDA1 (Figure 6b), which separates native and non-native assemblages (Figure 6a), indicated that native assemblages were associated with relatively large numbers of Staphylinidae, Carabidae and Elateridae species while non-native assemblages were associated with relatively high numbers of Dermestidae, Silvanidae and Bostrichidae species. The second axis (RDA2) was positively related to the fraction of Buprestidae, Cerambycidae and Tenebrionidae and negatively associated with the proportional representation of Staphylinidae, Ptiliidae and Latridiidae. The isolation of loadings for the Staphylinidae (Figure 6b) indicates that the relative species richness for this family does not covary closely with those of other families.

4 | DISCUSSION

The Coleoptera are the most species-rich taxonomic group in the world (Bouchard et al., 2017). Here, our analysis adopts the number of 385,602 described Coleoptera species from Bouchard

FIGURE 6 Results of RDA ordination on numbers of species per family. (a) location of each region in space defined by first two RDA axes; native assemblages in blue; non-native assemblages in red. (b) Loadings for each family



Factor	df	variance	F	Prob (>F)
Region	11	0.058083	0.8701	0.686
Non-native vs. Native status	1	0.041981	6.9176	0.001
Residual	9	0.054618		

TABLE 2 Redundancy analysis (RDA) permutation test (on numbers of species per family in each region) with model terms added sequentially (first to last) based on 999 permutations

et al. (2017) but Grove and Stork (2000) estimate that 70% to 95% of all beetle species remain undescribed. We report a total of 1,967 species that are non-native in at least one region, but, like estimates of total numbers of beetles in the world fauna, the true total number of non-native beetle species may be substantially higher. First, the 10 regions from which comprehensive lists of non-native beetle species were available represent only a fraction of the world. In addition, there typically exists a lag between the establishment of non-native species and their discovery (Essl et al., 2011; Kiritani & Yamamura, 2003) so it is likely that undiscovered non-native species exist in these regions.

Figure 1 suggests that much of the variation in numbers of species, both for non-native and for native species, among regions can be explained by differences in land area. The existence of a log-log linear species-area relationship is perhaps the most ubiquitous biogeographic phenomenon known to science, having been observed in virtually every taxon and world region (Lomolino, 2000) including both native and non-native species assemblages (Blackburn et al., 2016). Sax and Gaines (2006) reviewed studies that compared species-area relationships for both native and non-native assemblages and noted that relationships for non-native species are often different from those of native assemblages. Our data suggest that species-area relationships for non-native assemblages were generally not as steep as those for native assemblages from the same regions though none of them were significantly different (Figure 1). Further, lower R^2 values observed here for non-native assemblages indicate that land area explains less variation in numbers of these species than it does for native assemblages. Numbers of non-native species in a region may be influenced by a multitude of other factors that are related to propagule pressure or habitat invasibility (Lonsdale, 1999; Simberloff, 2009). Some of these factors, such as human population size, may be confounded with land area, making empirical differentiation of these factors difficult. Indeed, Liebhold et al. (2018) analysed global variation of total numbers of native and non-native insect species and found that land area did not directly influence insect richness but directly influenced native and non-native plant richness, which in turn influenced native and non-native insect species richness.

It is not surprising that there is a strong positive relationship between numbers of non-native species per family among all 10 regions and the number per family for all described species worldwide (Figure 3). For both native and non-native assemblages from all regions, the Curculionidae is one of the most species-rich families (Figures 2-4). This family contains considerable diversity of life histories and there are several pathways that may facilitate their global transport. Many Curculionidae, such as *Sitophilus* species, are common on stored grain and have been moved around the world for such

a long time that for several species there is uncertainty about the identity of their native vs. non-native ranges (Buckland, 1981). The Curculionidae also contain the true bark beetles and ambrosia beetles (Scolytinae) which are notorious hitchhikers in wood and wood packaging that have extensively moved around the world in trade (Brockerhoff et al., 2006).

The Curculionidae and the Staphylinidae are the two most species-rich Coleoptera families in the world fauna (Figure 2). However, unlike the Curculionidae, the Staphylinidae do not comprise a large proportion of the non-native Coleoptera fauna in all regions studied here. Specifically, surprisingly few Staphylinidae occur in the non-native assemblages in East Asian regions of Japan, South Korea, Okinawa and Ogasawara Islands even though they comprise a large fraction of the non-native Coleoptera fauna in other regions (Figure 4). We note that, across all families, the composition of non-native assemblages in non-native regions was generally dissimilar to non-native assemblages in all other regions (Figure 5). The reason for this discrepancy is not completely clear, although it is possible that this unique characteristic of the East Asian non-native fauna reflects historical strength of pathways. The Staphylinidae are mostly predators living in soil, under stones and in plant litter. As such, these insects historically may have been moved globally with soil, rock and wood bark (Ødegaard & Tømmeras, 2000). Lindroth (1957) chronicles in detail the historical accidental transport of Carabidae from Europe to North America with soil and rock used as ballast in sailing vessels prior to 1900. Like the Carabidae, Staphylinidae are likely to have been transported in this manner. During this era of large clipper ships, trade routes were intense between Europe and North America and to a lesser extent between Britain and its colonies (e.g., Australia, New Zealand) but connectivity to east Asia was less strong (Pascali, 2017). While it remains uncertain, it is possible that these historical trade routes explain the much lower numbers of Staphylinidae in east Asian regions analysed here. However, an alternative explanation for the highly variable proportion of Staphylinidae is the existence of differences in the intensity of reporting or discovery for this group among regions. This family generally does not include pest species and therefore these species may be overlooked. It should also be noted that numbers of native Staphylinidae species were also proportionally low in Ogasawara, Okinawa and South Korea (Figure 4).

Beetle species that were generally over-represented in non-native assemblages included the Dermestidae, Bostrichidae, Ptiliidae and Latridiidae. The majority of these over-represented families belong to Bostrichoidea and Cucujoidea superfamilies. The Bostrichidae mostly feed on wood so, like the Scolytinae mentioned above, have likely been transported extensively with raw wood, wood products and wood packaging material (Brockerhoff

et al., 2006). The Dermestidae, Ptiliidae and Latridiidae are mostly scavengers or fungal-feeders and may be associated with a variety of cargo including wood, plants and grain. The Ptiliidae and Latridiidae are exceptionally small, rendering them extremely difficult to detect during port inspections. However, it is surprising that small wood boring insects such as Bostrichidae and Ptinidae were over-represented while large families, such as Buprestidae and Cerambycidae, were under-represented.

The family-level composition of non-native assemblages is completely distinct from the composition of native assemblages; all non-native assemblages were separate from all native assemblages in RDA ordination space (Figure 6a). This result resembles those of Liebhold et al. (2016) who analysed species richness by order across 44 world regions and found that the order-level composition of native assemblages was distinct from those of non-native assemblages. Variation in family-level or species-level native species richness among regions reflects long-term (evolutionary) biogeographic radiation that drives global beta-diversity (Novotny & Weiblen, 2005). Biogeographic factors that determine this intercontinental variation in composition include latitudinal gradients and continental drift. However, the composition of non-native assemblages is driven by very different factors, namely the propensity of species to become associated with invasion pathways and the establishment success of small nascent populations, both of which are influenced by life-history traits that vary among insect orders and families (Kiritani & Yamamura, 2003; Liebhold et al., 2016; Meurisse et al., 2019). Indeed, RDA redundancy analysis indicated that there was no significant effect of region which indicates that native and non-native assemblages from the same regions are not significantly more similar to each other than to other assemblages, and likely reflects the very different processes that determine their composition (Table 2). For example, while the family-level species richness of native assemblages was similar among east Asian countries (all had positive values in the secondary RDA axis), the corresponding non-native assemblages were much less similar among regions (Figure 5a). Variation in the composition of non-native assemblages among regions may be driven, in part, by differences in the origins and types of goods that they import. Consequently, the composition of a non-native assemblage in any region tends to be more similar to non-native assemblages from other regions than it is to the composition of the native assemblage in the same region.

The differences that we report here between the family-level composition of native beetle assemblages and the composition of non-native assemblages are in many ways analogous to the concept of island disharmony that has been used to describe systematic over- and under-representation of certain taxa on islands (Carlquist, 1965). While our ordination analysis indicated a coherent distinction in the family-level composition of native and non-native assemblages, it showed no evidence of a consistent difference in the composition of native beetle assemblages between mainland and island regions (Figure 6a). Thus, results here suggest that invasion disharmony is generally greater than island disharmony in the Coleoptera.

Similar to invasion disharmony observed here in the Coleoptera, there are several reports of differences in the family-level composition between native and non-native plant assemblages and these differences are attributed to selection for plant species exhibiting traits that promote invasion (Procheş et al., 2008; Pyšek, 1998). Island disharmony is also believed to result from filtering based on species characteristics. These characteristics include dispersal capacity and disharmony may intensify as a result of radiation from early colonizers (Finston & Peck, 2004; Givnish et al., 2009). Recent work indicates that island disharmony may also arise from filtering of species based on traits other than dispersal capacity (Taylor et al., 2019; Weigelt et al., 2015). For example, colonization of islands may be more successful for species that do not depend on specialized interspecific interactions given that key species may be missing on islands. Taylor et al. (2019) argued for the value of increased emphasis on functional island disharmony (i.e., disproportional representation of species possessing specific traits on islands compared to mainland regions) rather than taxonomic disharmony. Here, we failed to detect any difference in the representation of dominant life histories (herbivores, predators, scavengers) comparing native and non-native assemblages but surely there must be differences in some functional traits. Further work is needed to identify species traits that promote insect invasions and drive taxonomic invasion disharmony such as observed here. We hypothesize that life-history traits that affect insect associations with invasion pathways and successful establishment in relatively small initial population sizes are likely drivers of invasion disharmony in insects.

Non-native coleopteran species invading various world regions span considerable variation in life histories. While many Coleoptera families (e.g., Curculionidae, Chrysomelidae, Cerambycidae) are predominantly herbivorous, many other families (e.g., Staphylinidae, Carabidae, Tenebrionidae) are comprised of mostly non-herbivorous species. We found no evidence for a consistent effect of dominant feeding category on invasiveness (Figure 3). While the impacts of many herbivorous non-native Coleoptera species are well known because of their impacts on agriculture and forestry, the impacts of non-herbivorous species are much more poorly understood. Though some predaceous Coleoptera species have been introduced for purposes of biological control (these were excluded from our analyses) and some information exists about their impacts, most predatory beetle species were not intentionally introduced, and almost nothing is known about their ecological impacts. Because non-native predators generally have greater impacts than native species (Paolucci et al., 2013), it is quite likely that some of these species have profound impacts on ecosystem structure and function. Similarly, Coleoptera scavenger species play key roles in nutrient cycling and other crucial ecosystem processes (Yang & Gratton, 2014) yet almost nothing is known about how the many non-native coleopteran detritivores and fungivores are altering these processes. In short, our current knowledge of both the macroecology and ecosystem ecology of beetle invasions is limited and requires extensive exploration.

5 | CONCLUSIONS

Here, we propose the term “invasion disharmony” to refer to systematic over- and under-representation of higher-level taxa among non-native assemblages compared to native assemblages. This phenomenon is analogous to “island disharmony” which is widely seen when comparing the composition of island and mainland faunas and floras (Gillespie & Roderick, 2002; König et al., 2020). In a manner similar to the colonization of islands, transport and establishment of non-native species filter the pool of potentially invading species and drive differences based on life history and other characteristics of species. However, invasion disharmony differs from island disharmony in that uniqueness in the higher taxa make-up of non-native assemblages is not driven by radiation from early colonizers which may drive random differences between island and mainland communities.

We have shown that the fraction of species represented by each family varies considerably among native and non-native beetle assemblages, with families such as the Dermestidae and Bostrichidae consistently over-represented among non-native assemblages compared to their representation in native assemblages. Similarly, other families, such as the Carabidae, tend to be under-represented among non-native assemblages. While these patterns of invasion disharmony are likely the result of filtering during species transport and establishment, we have not identified specific filters here. Further research is needed to explore which particular life-history traits explain patterns of invasion disharmony seen in beetles and possibly in other insects.

ACKNOWLEDGEMENTS

We thank Gino Luzader for assistance. Natalia Vandenberg and James Liebherr provided useful advice. This work was supported by the National Socio-Environmental Synthesis Center (SESYNC) under funding received from the National Science Foundation DBI-1639145. AML acknowledges support from the USDA Forest Service International Programs and grant EVA4.0, no. CZ.02.1.01/0.0/0.0/16_019/0000803 financed by OP RDE. HS acknowledges support from Belmont Forum-BiodivERsA project AlienScenarios through the national funders German Federal Ministry of Education and Research (BMBF; grant 01LC1807A). CB acknowledges funding from the Swiss FNS, the canton Vaud and the “Programme de la Famille Sandoz – Monique de Meuron pour la relève universitaire.” RT acknowledges funding from the Ministry of Business, Innovation and Employment (New Zealand’s Biological Heritage National Science Challenge, C09X1501).

CONFLICT OF INTEREST


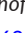

None of the authors have any conflict of interest.

DATA AVAILABILITY STATEMENT

Data available for download from Dryad include a table of numbers of non-native Coleoptera species per family in each of 10 world regions, a table of numbers of native Coleoptera species per family in

each of 10 world regions and a list of non-native Coleoptera species from 10 world regions. These data can be downloaded at <https://doi.org/10.5061/dryad.tx95x69z1>.

ORCID

Andrew M. Liebhold  <https://orcid.org/0000-0001-7427-6534>
 Rebecca M. Turner  <https://orcid.org/0000-0002-7885-3092>
 Rachael E. Blake  <https://orcid.org/0000-0003-0847-9100>
 Cleo Bertelsmeier  <https://orcid.org/0000-0003-3624-1300>
 Eckehard G. Brockerhoff  <https://orcid.org/0000-0002-5962-3208>
 Helen F. Nahrung  <https://orcid.org/0000-0002-3351-306X>
 Deepa S. Pureswaran  <https://orcid.org/0000-0002-4040-7708>
 Alain Roques  <https://orcid.org/0000-0002-3734-3918>
 Hanno Seebens  <https://orcid.org/0000-0001-8993-6419>
 Takehiko Yamanaka  <https://orcid.org/0000-0003-2888-1076>

REFERENCES

- Arnett, R. H. Jr, & Thomas, M. C. (Eds.) (2001). *American beetles (Vol. 1): Archostemata, Myxophaga, Adepaga, Polyphaga: Staphyliniformia*. CRC Press.
- Arnett, R. H. Jr, Thomas, M. C., Skelley, P. E., & Frank, J. H. (Eds.) (2002). *American beetles (Vol 2): Polyphaga: Scarabaeoidea through Curculionoidea*. CRC Press.
- Blackburn, T. M., Delean, S., Pyšek, P., Cassey, P., & Field, R. (2016). On the island biogeography of aliens: A global analysis of the richness of plant and bird species on oceanic islands. *Global Ecology and Biogeography*, 25, 859–868. <https://doi.org/10.1111/geb.12339>
- Bouchard, P., Bousquet, Y., Davies, A., Alonso-Zarazaga, M., Lawrence, J., Lyal, C., Newton, A., Reid, C., Schmitt, M., Slipinski, A., & Smith, A. (2011). Family-group names in Coleoptera (Insecta). *ZooKeys*, 88, 1–972. <https://doi.org/10.3897/zookeys.88.807>
- Bouchard, P., Smith, A. B., Douglas, H., Gimmel, M. L., Brunke, A. J., & Kanda, K. (2017). Biodiversity of Coleoptera. In R. G. Foottit, & P. H. Adler (Eds.), *Insect biodiversity: Science and society* (pp. 337–417). John Wiley & Sons Ltd.
- Brockerhoff, E. G., Bain, J., Kimberley, M., & Knížek, M. (2006). Interception frequency of exotic bark and ambrosia beetles (Coleoptera: Scolytinae) and relationship with establishment in New Zealand and worldwide. *Canadian Journal of Forest Research*, 36, 289–298. <https://doi.org/10.1139/x05-250>
- Buckland, P. C. (1981). The early dispersal of insect pests of stored products as indicated by archaeological records. *Journal of Stored Products Research*, 17, 1–12. [https://doi.org/10.1016/0022-474X\(81\)90025-4](https://doi.org/10.1016/0022-474X(81)90025-4)
- Burns, K. C. (2015). A theory of island biogeography for exotic species. *The American Naturalist*, 186, 441–451. <https://doi.org/10.1086/682934>
- Carlquist, S. (1965). *Island life. A natural history of the islands of the world*. Natural History Press.
- Chamberlain, S. A., & Szöcs, E. (2013). taxize: Taxonomic search and retrieval in R. *F1000Research*, 2, 191. <https://doi.org/10.12688/f1000research.2-191.v1>
- Chapman, A. D. (2009). *Numbers of living species in Australia and the world* (2nd ed.). Australian Biodiversity Information Services.
- Clark, J. F. M. (2007). “The eyes of our potatoes are weeping”: The rise of the Colorado beetle as an insect pest. *Archives of Natural History*, 34, 109–128. <https://doi.org/10.3366/anh.2007.34.1.109>
- Essl, F., Dullinger, S., Rabitsch, W., Hulme, P. E., Hülber, K., Jarošík, V., Kleinbauer, I., Krausmann, F., Kühn, I., Nentwig, W., Vilà, M., Genovesi, P., Gherardi, F., Desprez-Loustau, M.-L., Roques, A., & Pyšek, P. (2011). Socioeconomic legacy yields an invasion debt.

- Proceedings of the National Academy of Sciences USA*, 108, 203–207. <https://doi.org/10.1073/pnas.1011728108>
- Finston, T. L., & Peck, S. B. (2004). Speciation in Darwin's darlings: Taxonomy and evolution of Stomion beetles in the Galápagos Islands, Ecuador (Insecta: Coleoptera: Tenebrionidae). *Zoological Journal of the Linnean Society*, 141, 135–152. <https://doi.org/10.1111/j.1096-3642.2004.00115.x>
- GBIF Secretariat. (2019). *GBIF Backbone Taxonomy*. Checklist dataset. Retrieved from <https://doi.org/10.15468/39omei> accessed via GBIF.org on 2020-08-12
- Gillespie, R. G., & Roderick, G. K. (2002). Arthropods on islands: Colonization, speciation, and conservation. *Annual Review of Entomology*, 47, 595–632. <https://doi.org/10.1146/annurev.ento.47.091201.145244>
- Givnish, T. J., Millam, K. C., Mast, A. R., Paterson, T. B., Theim, T. J., Hipp, A. L., Henss, J. M., Smith, J. F., Wood, K. R., & Sytsma, K. J. (2009). Origin, adaptive radiation and diversification of the Hawaiian lobeliads (Asterales: Campanulaceae). *Proceedings of the Royal Society B: Biological Sciences*, 276, 407–416. <https://doi.org/10.1098/rspb.2008.1204>
- Grove, S. J., & Stork, N. E. (2000). An inordinate fondness for beetles. *Invertebrate Taxonomy*, 14, 733–739. <https://doi.org/10.1071/IT00023>
- Herms, D. A., & McCullough, D. G. (2014). Emerald ash borer invasion of North America: History, biology, ecology, impacts, and management. *Annual Review of Entomology*, 59, 13–30. <https://doi.org/10.1146/annurev-ento-011613-162051>
- Kiritani, K., & Yamamura, K. (2003). Exotic insects and their pathways for invasion. In G. M. Ruiz, & J. T. Carlton (Eds.), *Bioinvasions: Pathways, vectors, and management strategies* (pp. 44–67). Island Press.
- König, C., Weigelt, P., Taylor, A., Stein, A., Dawson, W., Essl, F., Pergl, J., Pyšek, P., van Kleunen, M., Winter, M., Chatelain, C., Wiering, J. J., Krestov, P., & Kreft, H. (2020). Source pools and disharmony of the world's island floras. *Ecography*, 43, 1–12. <https://doi.org/10.1111/ecog.05174>
- Legendre, P., & Gallagher, E. D. (2001). Ecologically meaningful transformations for ordination of species data. *Oecologia*, 129, 271–280. <https://doi.org/10.1007/s004420100716>
- Legendre, P., & Legendre, L. (1998). *Numerical ecology* (Vol. 20, 2nd English ed.). Elsevier.
- Liebhald, A. M., Yamanaka, T., Roques, A., Augustin, S., Chown, S. L., Brockhoff, E. G., & Pyšek, P. (2016). Global compositional variation among native and non-native regional insect assemblages emphasizes the importance of pathways. *Biological Invasions*, 18, 893–905. <https://doi.org/10.1007/s10530-016-1079-4>
- Liebhald, A. M., Yamanaka, T., Roques, A., Augustin, S., Chown, S. L., Brockhoff, E. G., & Pyšek, P. (2018). Plant diversity drives global patterns of insect invasions. *Scientific Reports*, 8, 1–5. <https://doi.org/10.1038/s41598-018-30605-4>
- Lindroth, C. H. (1957). *The Faunal Connections between Europe and North America*. John Wiley & Sons Inc.
- Lomolino, M. V. (2000). Ecology's most general, yet protean pattern: The species-area relationship. *Journal of Biogeography*, 27, 17–26.
- Longstaff, B. C. (1981). Biology of the grain pest species of the genus *Sitophilus* (Coleoptera: Curculionidae): A critical review. *Protection Ecology*, 2, 83–130.
- Lonsdale, W. M. (1999). Global patterns of plant invasions and the concept of invasibility. *Ecology*, 80, 1522–1536. [10.1890/0012-9658\(1999\)080\[1522:GPOPIA\]2.0.CO;2](https://doi.org/10.1890/0012-9658(1999)080[1522:GPOPIA]2.0.CO;2)
- Meurisse, N., Rassati, D., Hurley, B. P., Brockhoff, E. G., & Haack, R. A. (2019). Common pathways by which non-native forest insects move internationally and domestically. *Journal of Pest Science*, 92, 13–27. <https://doi.org/10.1007/s10340-018-0990-0>
- Morimoto, N., Kiritani, K., Yamamura, K., & Yamanaka, T. (2019). Finding indications of lag time, saturation, and trading inflow in the emergence record of exotic agricultural insect pests in Japan. *Applied Entomology and Zoology*, 54, 437–450. <https://doi.org/10.1007/s13355-019-00640-2>
- Nielsen, E. S., & Mound, L. A. (1999). Global diversity of insects: The problems of estimating numbers. In P. H. Raven, & T. Williams (Eds.), *Nature and human society: The quest for a sustainable world* (pp. 213–222). National Academy Press.
- Novotny, V., & Weiblen, G. D. (2005). From communities to continents: Beta diversity of herbivorous insects. *Annales Zoologici Fennici*, 42, 463–475.
- Ødegaard, F., & Tømmeras, B. Å. (2000). Compost heaps – refuges and stepping-stones for alien arthropod species in northern Europe. *Diversity and Distributions*, 6, 45–59. <https://doi.org/10.1046/j.1472-4642.2000.00071.x>
- Oksanen, J., Blanchet, F. G., Friendly, M., Kindt, R., Legendre, P., McGlenn, D., Minchin, P. R., O'Hara, R. B., Simpson, G. L., Solymos, P., Stevens, M. H. H., Szoecs, E., & Wagner, H. (2020). *Package 'vegan'*. Retrieved from <https://cran.r-project.org/web/packages/vegan/vegan.pdf>
- Paolucci, E. M., Maclsaac, H. J., & Ricciardi, A. (2013). Origin matters: Alien consumers inflict greater damage on prey populations than do native consumers. *Diversity and Distributions*, 19, 988–995. <https://doi.org/10.1111/ddi.12073>
- Pascali, L. (2017). The wind of change: Maritime technology, trade, and economic development. *American Economic Review*, 107, 2821–2854. <https://doi.org/10.1257/aer.20140832>
- Procheş, Ş., Wilson, J. R., Richardson, D. M., & Rejmánek, M. (2008). Searching for phylogenetic pattern in biological invasions. *Global Ecology and Biogeography*, 17(1), 5–10.
- Pyšek, P., & Pyšek, P. (1998). Is there a taxonomic pattern to plant invasions? *Oikos*, 82, 282–294. <https://doi.org/10.2307/3546968>
- Robinson, A. P., T. Walshe, M. A. Burgman, & M. Nunn (Eds.) (2017). *Invasive species: Risk assessment and management*. Cambridge University Press.
- Sax, D. F., & Gaines, S. D. (2006). The biogeography of naturalized species and the species-area relationship: Reciprocal insights to biogeography and invasion biology. In M. W. Cadotte, S. M. McMahon, & T. Fukami (Eds.), *Conceptual ecology and invasions biology: Reciprocal approaches to nature* (pp. 449–480). Kluwer.
- Seebens, H., Blackburn, T. M., Dyer, E. E., Genovesi, P., Hulme, P. E., Jeschke, J. M., Pagad, S., Pyšek, P., van Kleunen, M., Winter, M., Ansong, M., Arianoutsou, M., Bacher, S., Blasius, B., Brockhoff, E. G., Brundu, G., Capinha, C., Causton, C. E., Celesti-Grapow, L., ... Essl, F. (2018). Global rise in emerging alien species results from increased accessibility of new source pools. *Proceedings of the National Academy of Sciences USA*, 115, E2264–E2273. <https://doi.org/10.1073/pnas.1719429115>
- Simberloff, D. (2009). The role of propagule pressure in biological invasions. *Annual Review of Ecology, Evolution, and Systematics*, 40, 81–102. <https://doi.org/10.1146/annurev.ecolsys.110308.120304>
- Ślipiński, S. A., Leschen, R. A. B., & Lawrence, J. F. (2011). Order Coleoptera Linnaeus, 1758. In Z.-Q. Zhang (Ed.) *Animal biodiversity: An outline of higher-level classification and survey of taxonomic richness*. *Zootaxa* 3148, 203–208.
- Stork, N. E. (2018). How many species of insects and other terrestrial arthropods are there on Earth? *Annual Review of Entomology*, 63, 31–45. <https://doi.org/10.1146/annurev-ento-020117-043348>
- Stork, N. E., McBroom, J., Gely, C., & Hamilton, A. J. (2015). New approaches narrow global species estimates for beetles, insects, and terrestrial arthropods. *Proceedings of the National Academy of Sciences*, 112(24), 7519–7523. <https://doi.org/10.1073/pnas.1502408112>
- Taylor, A., Weigelt, P., König, C., Zotz, G., & Kreft, H. (2019). Island disharmony revisited using orchids as a model group. *New Phytologist*, 223, 597–606. <https://doi.org/10.1111/nph.15776>
- ter Braak, C. J. F. (1986). Canonical correspondence analysis: A new eigenvector technique for multivariate direct gradient analysis. *Ecology*, 67, 1167–1179. <https://doi.org/10.2307/1938672>

- Weigelt, P., Daniel Kissling, W., Kisel, Y., Fritz, S. A., Karger, D. N., Kessler, M., Lehtonen, S., Svenning, J.-C., & Kreft, H. (2015). Global patterns and drivers of phylogenetic structure in island floras. *Scientific Reports*, 5, 1–13. <https://doi.org/10.1038/srep12213>
- Wheeler, A. G., & Hoebeke, E. R. (2009). Adventive (non-native) insects: Importance to science and society. In R. G. Foottit, & P. H. Adler (Eds.), *Insect biodiversity: Science and society* (pp. 475–521). John Wiley & Sons Ltd.
- Yamanaka, T., Morimoto, N., Nishida, G. M., Kiritani, K., Moriya, S., & Liebhold, A. M. (2015). Comparison of insect invasions in North America, Japan and their Islands. *Biological Invasions*, 17, 3049–3061. <https://doi.org/10.1007/s10530-015-0935-y>
- Yang, L. H., & Gratton, C. (2014). Insects as drivers of ecosystem processes. *Current Opinion in Insect Science*, 2, 26–32. <https://doi.org/10.1016/j.cois.2014.06.004>
- Zhang, Z. Q. (2013). Animal biodiversity: An outline of higher-level classification and survey of taxonomic richness (Addenda 2013). *Zootaxa*, 3703, 1–82.

SUPPORTING INFORMATION

Additional supporting information may be found online in the Supporting Information section.

How to cite this article: Liebhold, A. M., Turner, R. M., Blake, R. E., Bertelsmeier, C., Brockerhoff, E. G., Nahrung, H. F., Pureswaran, D. S., Roques, A., Seebens, H., & Yamanaka, T. (2021). Invasion disharmony in the global biogeography of native and non-native beetle species. *Diversity and Distributions*, 27, 2050–2062. <https://doi.org/10.1111/ddi.13381>

BIOSKETCH

The authors of this paper are participants in a pursuit project, "Global socioeconomic drivers of insect invasions" at the National Socio-environmental Synthesis Center (SESYNC). This interdisciplinary project aims to explore the human and biological processes responsible for the global spread of non-native insect species. This research involves the application of biogeographic, economic and ecological analysis of historical insect invasions worldwide. SESYNC is a synthesis centre co-founded by the University of Maryland and Resources for the Future with funding from the U.S. National Science Foundation.