



**HAL**  
open science

## Benchmarking an operational hydrological model for providing seasonal forecasts in Sweden

Marc Girons Lopez, Louise Crochemore, Ilias G Pechlivanidis

► **To cite this version:**

Marc Girons Lopez, Louise Crochemore, Ilias G Pechlivanidis. Benchmarking an operational hydrological model for providing seasonal forecasts in Sweden. *Hydrology and Earth System Sciences*, 2021, 25 (3), pp.1189-1209. 10.5194/hess-25-1189-2021 . hal-03483924

**HAL Id: hal-03483924**

**<https://hal.inrae.fr/hal-03483924>**

Submitted on 16 Dec 2021

**HAL** is a multi-disciplinary open access archive for the deposit and dissemination of scientific research documents, whether they are published or not. The documents may come from teaching and research institutions in France or abroad, or from public or private research centers.

L'archive ouverte pluridisciplinaire **HAL**, est destinée au dépôt et à la diffusion de documents scientifiques de niveau recherche, publiés ou non, émanant des établissements d'enseignement et de recherche français ou étrangers, des laboratoires publics ou privés.



Distributed under a Creative Commons Attribution 4.0 International License



# Benchmarking an operational hydrological model for providing seasonal forecasts in Sweden

Marc Girons Lopez, Louise Crochemore, Ilias G. Pechlivanidis

Swedish Meteorological and Hydrological Institute, 601 76 Norrköping, Sweden

5 *Correspondence to:* Marc Girons Lopez (marc.girons@smhi.se)

**Abstract.** Probabilistic seasonal forecasts are important for many water-intensive activities requiring long-term planning. Among the different techniques used for seasonal forecasting, the Ensemble Streamflow Prediction (ESP) approach has long been employed due to the singular dependence on past meteorological records. The Swedish Meteorological and Hydrological Institute is currently extending the use of long-range forecasts within its operational warning service, which requires a thorough analysis of the suitability and applicability of different methods with the national S-HYPE hydrological model. To this end, we aim to evaluate the skill of ESP forecasts over 39,493 catchments in Sweden, understand their spatiotemporal patterns, and explore the main hydrological processes driving forecast skill. We found that ESP forecasts are generally skilful for most of the country up to 3 months into the future but that large spatiotemporal variations exist. Forecasts are most skilful during the winter months in northern Sweden, except for the highly-regulated hydropower-producing rivers. The relationships between forecast skill and 15 different hydrological signatures show that forecasts are most skilful for slowly-reacting, baseflow-dominated catchments and least skilful for flashy catchments. Finally, we show that forecast skill patterns can be spatially clustered in 7 unique regions with similar hydrological behaviour. Overall, these results contribute to identify in which areas, seasons, and how long into the future ESP hydrological forecasts provide an added value, not only for the national forecasting and warning service but, most importantly, to guide decision-making in critical services such as hydropower management and risk reduction.

10  
15  
20

## 1 Introduction

Regardless of the geographical setting, human society depends on water resources to satisfy basic needs and allow for social growth and development. At the same time, however, the variability of the hydrological systems, leading to extreme events such as floods or droughts, puts pressure on the viability and sustainability of many water-intensive activities. In this setting, being able to predict the future evolution of the hydrologic system may improve societal resilience by anticipating potentially hazardous events and enabling the adoption of protective and/or adaptive measures (Girons Lopez et al., 2017; Pappenberger et al., 2015b). Even if most day-to-day decisions on water-related issues are based on short- and medium-range forecasts, some activities, such as water reservoir operation and optimisation or strategic planning, benefit from long-term forecasts. Despite their inherent uncertainties, long-term forecasts such as seasonal forecasts are a valuable tool for such

25



30 applications, as they provide insights into the general trends of the hydrological system up to several months into the future, leading also to economic benefits (Bruno Soares et al., 2018; Giuliani et al., 2020).

Different techniques are available for generating seasonal forecasts, each with different strengths and weaknesses. These techniques may be based on dynamic or statistical methods, or on a weighted combination of both. Among these, the Ensemble Streamflow Prediction (ESP) methodology has long been widely adopted for seasonal forecasting (Wang et al., 35 2011; Wood and Lettenmaier, 2006). Following this methodology, ensemble streamflow forecasts are generated using historical meteorological data as forcing to a hydrological model. An advantage of this method compared to methods based directly on historical streamflow, is that ESP forecasts are initialised based on hydrological conditions updated for the forecast date (Crochemore et al., 2020). Forecasts thus benefit from the most recent hydrological knowledge when they are initialised, which is of particular interest for unprecedented hydrological conditions. This advantage can however also lead to 40 forecast overconfidence as this method does not consider the impact of potential uncertainties in the initial hydrologic conditions, as noted by Wood and Schaake (2008). Additionally, its reliance on historical meteorological forcing makes it impossible for it to capture hydrological responses to unprecedented meteorological events.

ESP forecasts have been used by the scientific community to assess forecast skill sensitivity and uncertainties and to benchmark seasonal forecast improvements (Arnal et al., 2018; Harrigan et al., 2018), as well as for operational flood 45 forecasting in many different settings and scales (Candogan Yossef et al., 2017). Over the years, different techniques have been developed to improve the performance of forecasting systems, such as data assimilation for improving the initial conditions of forecasts (DeChant and Moradkhani, 2011), multi-model approaches (Muhammad et al., 2018), or pre- and post-processing techniques such as using artificial neural networks for reducing the effects of model errors (Jeong and Kim, 2005; Macian-Sorribes et al., 2020), historical scenario selection and weighting (Crochemore et al., 2017; Trambauer et al., 50 2015), and calibration techniques (Wood and Schaake, 2008).

Evaluation efforts are typically carried out based on forecasts issued retrospectively (re-forecasts) over time periods long enough to ensure that the evaluation is statistically robust. For many operational applications it is important to understand the spatiotemporal patterns of seasonal streamflow predictability as well as the driving processes behind these patterns (Sutanto et al., 2020). Indeed, previous studies have identified different sources of forecast skill depending on hydrological 55 characteristics; for instance, Greuell et al., (2019), Shukla et al., (2013), and Wanders et al., (2019) identified initial conditions of soil moisture and snow (during spring) as the most important sources of skill over Europe, while Singla et al. (2012) found similar results for France. In a study over the United Kingdom, Harrigan et al. (2018) ascertained streamflow predictability was higher for slow-responding catchments, as described by the baseflow index (BFI). Some studies have even gone one step further by investigating spatiotemporal patterns in streamflow predictability in an attempt to regionalize the 60 forecast skill. For example, Pechlivanidis et al. (2020) showed that streamflow predictability is strongly dependent on the overall hydrological regime, with limited predictability in flashy basins (low river memory) and hence, it can be regionalised based on a priori knowledge of local hydro-climatic conditions.



The Swedish Meteorological and Hydrological Institute (SMHI) has long been operationally providing streamflow forecasts and hydrological warnings to relevant actors in hydrological risk management (municipalities, county boards, Swedish Civil Contingencies Agency), as well as to the general public. Forecasts were initially produced with the HBV model (Bergström, 1976), but in recent years operational forecasting has shifted to the Swedish implementation of the HYPE model (S-HYPE, Lindström et al., 2010), which allows for an integrated, high-resolution description of the hydrological system across the country. Where available, in-situ observations of streamflow are assimilated, which has a beneficial impact on the hydrological predictions downstream. ESP seasonal forecasts are produced but not generally spread to other actors due to uncertainties in their skill and interpretation by external parties. Nevertheless, SMHI is now looking to extend the usage of long-term forecasts within its warning service, which requires a deeper understanding of forecast performance, its patterns, and controlling factors. In terms of regionalisation, four main hydro-climatic regions based on hydro-climatic patterns (Lindström and Alexandersson, 2004; Pechlivanidis et al., 2018) have typically been used for water management in Sweden. However, these regions were not put forward with consideration to seasonal streamflow predictability over Sweden and might therefore be of limited use for this purpose.

The aim of this study is to benchmark and attribute the ESP forecast skill over Sweden with the operational S-HYPE model. To address these questions, we: (a) evaluate the skill of ESP seasonal forecasts generated with the operational S-HYPE model over Sweden and understand the spatiotemporal pattern of skill, (b) detect potential links between streamflow forecast skill and hydrological characteristics, and (c) attribute streamflow predictability patterns across the country to hydrological behaviour of the river systems. The paper is structured as follows: section 2 presents the data used, hydrological model setup, and methodology for the forecast evaluation; section 3 presents the results, followed by the discussion in section 4; finally, section 5 states the conclusions.

## 2 Methods

### 2.1 Data

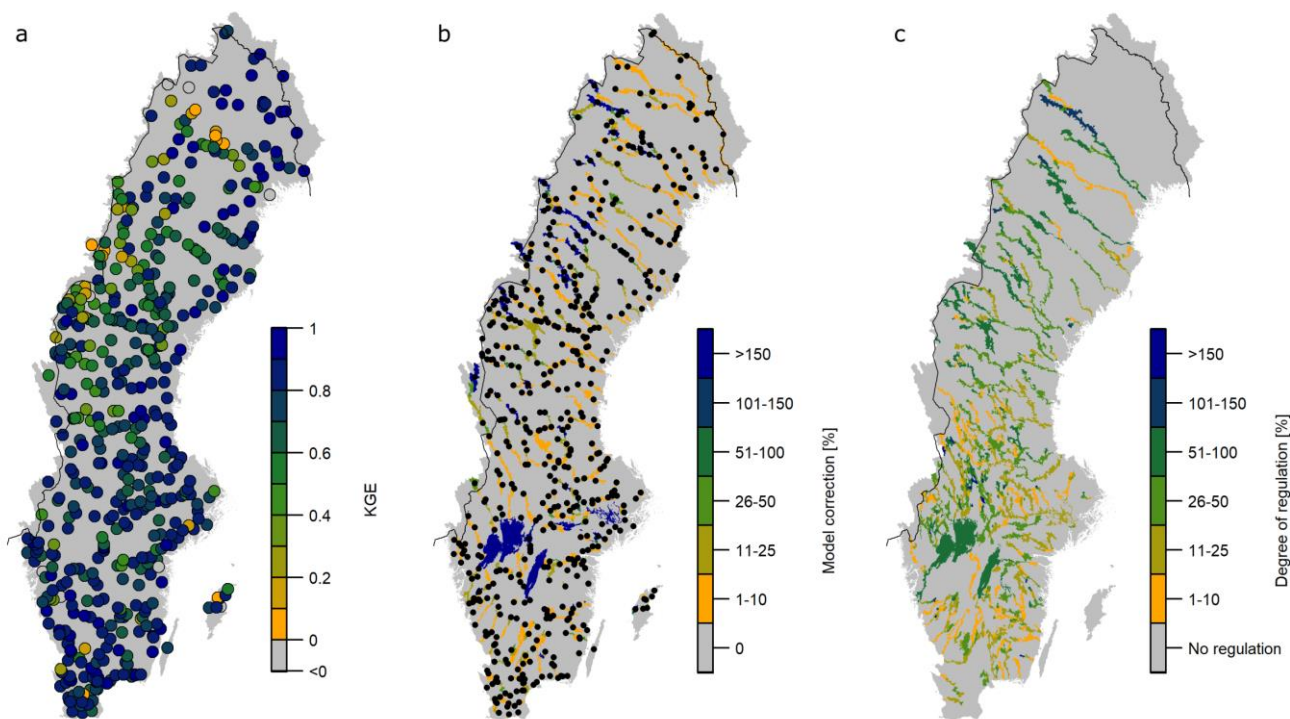
Daily precipitation and temperature data from the PTHBV database (Johansson, 2002) were used as forcing data to the S-HYPE model. This database contains gridded data based on a weighted interpolation of measured values from all available stations for any given day with a resolution of 4x4 km, and it is available from 1961 onwards. The interpolation method used for generating PTHBV considers factors such as elevation and wind frequency and direction to make interpolated values for precipitation and temperature more reliable. Additionally, daily stream discharge and water level data from 539 stations of SMHI's gauge network were used to correct the model outputs for improved forecast initialisation (see Figure 1).

### 2.2 Hydrological modelling

The ESP re-forecasts were produced using the S-HYPE model (Strömqvist et al., 2012), which is the operational implementation of the HYPE model for Sweden (Lindström et al., 2010). This allowed an analysis of model outputs for



39,493 catchments (with an average spatial resolution of 10 km<sup>2</sup>) in the model domain. The HYPE model is a process-based  
95 hydrological model for water quantity and quality which operates on a daily time step and includes both hydrological  
(snowpack, groundwater, surface runoff, streamflow) and anthropogenic (reservoir operation, irrigation) factors. The S-  
HYPE model has a median Kling-Gupta efficiency (Gupta et al., 2009) of 0.79 for the period 1981 – 2016, ranging from -  
0.56 to 0.96 (Figure 1a).



100 **Figure 1 Study domain: (a) Kling-Gupta S-HYPE model performance (KGE) for the period 1981 – 2016 for each of the 539 hydrological stations, (b) average model correction value for each catchment following the autoregressive correction method and, (c) degree of regulation of each catchment.**

A large percentage of water courses in Sweden are regulated, mainly for energy production purposes; see the degree of regulation (%) in Figure 1c; see also the definition in Pechlivanidis et al., (2018). This makes the simulation and prediction  
105 of water variables in the main water courses more challenging, as regulation patterns, which can largely deviate from the natural flow, need to be considered. In the operational S-HYPE model, general regulation regimes in the form of constant flow or seasonally varying sine wave shaped flow (or a combination of both) between predefined levels and, in some cases, specific dates are provided for a number of reservoirs. Nevertheless, since dam operation is continuously adapted (within certain bounds) to the present and most probable future meteorological and hydrological conditions, these general regulation  
110 regimes are expected to be of little benefit for seasonal forecasting purposes.



We produced a series of hydrological re-forecasts at the daily time step for all 39,493 locations across Sweden and transboundary basins using meteorological forcing data from 25 random years for the period 1961 – 2016 so as to mimic SMHI’s operational forecast setup. When selecting the forcing data, a window of 3 years was left out around the analysis year (1 year before and two years after) to limit the impact of interannual streamflow memory and thus avoid conditioning the forecasts. We initialised the re-forecasts on the 1<sup>st</sup>, 8<sup>th</sup>, 15<sup>th</sup>, and 22<sup>nd</sup> of each month (approximately once a week). We used stream discharge and water level data, where available, to correct the model outputs prior to producing the re-forecasts, and thus get the best possible initialisation conditions. To this purpose, we used an autoregressive (AR) correction method (Lindström and Carlsson, 2000; Pechlivanidis et al., 2014). Following this method, model outputs are replaced by the available observations and the model errors with respect to these observations are saved for every time step. If observations are no longer available, the output corrections converge exponentially towards the simulated values. This correction only affects catchments with or downstream from streamflow observations and is especially relevant for regulated water courses with low model performance where simulated streamflow can significantly deviate from actual values (Figure 1b).

### 2.3 Forecast evaluation

We evaluated the skill of the ESP re-forecasts produced with the S-HYPE model over the period 1981 – 2016 using the Continuous Ranked Probability Skill Score (CRPSS, Appendix A) and a cross-validation strategy. Although studies involving large-scale models often use model simulations as reference as this minimizes the impact of model performance on forecast skill (Arnal et al., 2018; Crochemore et al., 2020), here the reference was a combination of observations (for catchments with or downstream from observation points) and model simulations (elsewhere) as a station-corrected simulation approach was used to achieve the best possible initial conditions. We assessed the skill of the ESP re-forecasts so as to highlight the added value of the ESP forecasts with respect to an ensemble forecast based on historical streamflow, which users would have access to in the absence of SMHI’s forecast service (Pappenberger et al., 2015a). To this purpose, we used an ensemble whose 25 members were resampled from the historical – station-corrected – model simulations from the period 1981 – 2010 (excluding the forecast year) as a benchmark against which to derive the skill of the ESP re-forecasts. Even if hydrological models are typically run at a daily time scale, forecast results from hydroclimate prediction systems are usually post-processed and aggregated over longer periods to provide information tailored to the user needs (Bohn et al., 2010). More specifically, a temporal aggregation of one month is typically used in seasonal forecasting services (Apel et al., 2018; Bennett et al., 2017). Nevertheless, different time periods may be of interest depending on the sectorial use (e.g. water resources management, civil protection mechanisms, warning services). Therefore, in addition to using a basic temporal aggregation of one week (i.e. daily streamflow forecasts were aggregated to weekly averages) to estimate the predictive skill of the national operational service, we were also interested in understanding how aggregating streamflow forecasts over different time periods (i.e. 2 weeks, 4 weeks, 8 weeks, 12 weeks, and 24 weeks) impacts forecast skill.



## 2.4 Forecast skill attribution

145 Thereafter, we investigated which hydrological characteristics are associated with skilful forecasts. More specifically, we selected a set of 15 hydrologic signatures (statistics describing the hydrological behaviour; see Table 1) to provide diagnostics of the hydrological regime (Kuentz et al., 2017; Pechlivanidis and Arheimer, 2015). We used the non-parametric Spearman rank test to assess the correlation between forecast skill and each of the hydrologic signatures.

**Table 1 Hydrologic signatures used for catchment functioning.**

Signature	Abbreviation	Unit	Reference
Mean annual specific runoff	Qm	mm yr <sup>-1</sup>	Viglione et al. (2013)
Range of Pardé coefficient	DPar	-	Viglione et al. (2013)
Slope of streamflow duration curve	mFDC	% % <sup>-1</sup>	Viglione et al. (2013)
Normalised low streamflow	q95	-	Viglione et al. (2013)
Normalised high streamflow	q05	-	Viglione et al. (2013)
Coefficient of variation	CV	-	Donnelly et al. (2016)
Flashiness	Flash	-	Donnelly et al. (2016)
Normalised peak distribution	PD	-	Euser et al. (2013)
Rising limb density	RLD	-	Euser et al. (2013)
Declining limb density	DLD	-	Euser et al. (2013)
Normalised relatively low streamflow	q70	-	Viglione et al. (2013)
Baseflow index	BFI	-	Kuentz et al. (2017)
Runoff coefficient	RC	-	Kuentz et al. (2017)
Streamflow elasticity	EQP	-	Sawicz et al. (2011)
High pulse count	HPC	-	Yadav et al. (2007)

150

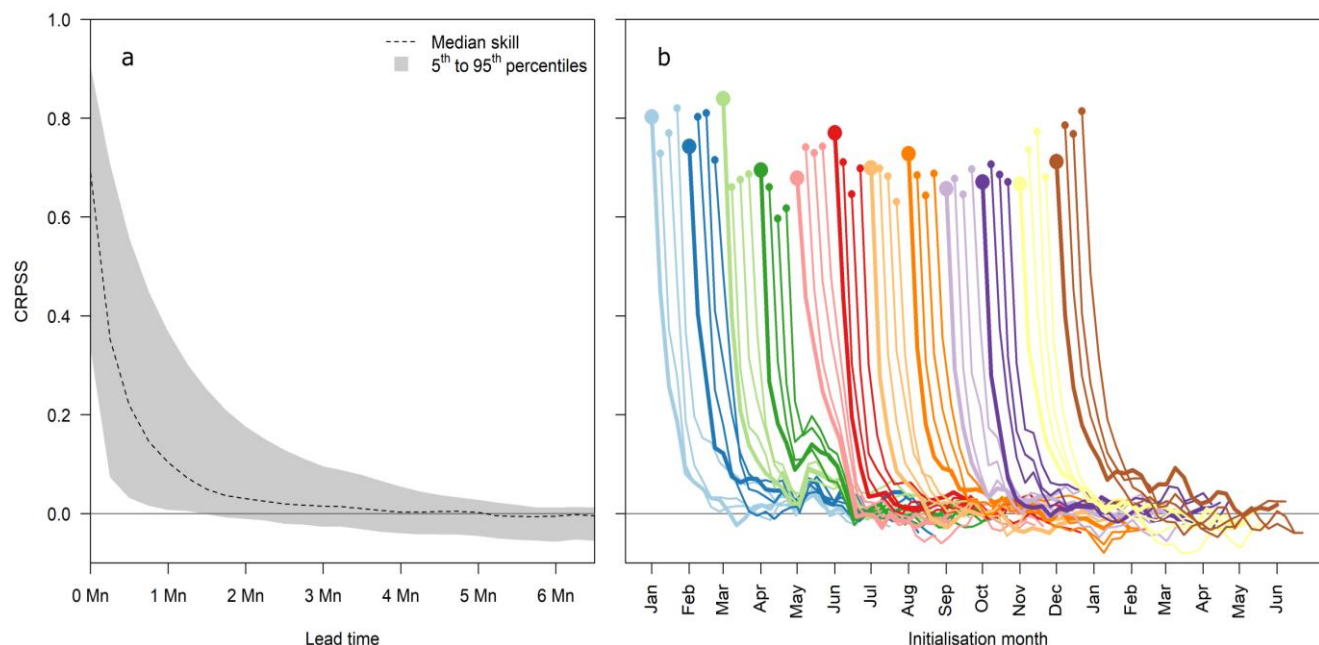
Then, we applied a *k-means* clustering approach within the 15-dimension space (hydrological signatures) to group the catchments into clusters based on similarities of basin functioning and further identify the dominant streamflow generating processes for specific regions. Finally, we analysed the hydrologic predictability for each of the clusters.



### 3 Results

#### 155 3.1 Temporal and spatial distribution of forecast skill

The skill of the ESP re-forecasts varies with the lead time and the forecast initialisation date (Figure 2). As expected, the skill of the ESP with respect to historical streamflow is overall very high for medium-range horizons (i.e. 1 – 2 weeks ahead), with a median skill over Sweden starting at 0.7 (Figure 2a) and thereafter decreasing with time. After approximately three months, the ESP provides, on average, no added value with respect to historical streamflow. Similar trends have been  
160 observed in other evaluations of forecasting systems over Sweden (Foster et al., 2018; Olsson et al., 2016). In particular, we note a rapid decrease in skill in the first forecast month (Crochemore et al., 2020; Harrigan et al., 2018). Consequently, under the common monthly initialisation frequency of climate prediction systems (Batté and Déqué, 2016; Johnson et al., 2019), streamflow predictability is expected to remain low for periods beyond a 2-week forecast horizon. By increasing the  
165 frequency of forecast initialisation (e.g. from once a month to once a week), and hence frequently updating the initial hydrological states, it is possible to maintain a high streamflow forecast skill for extended forecast horizons (Figure 2b).



**Figure 2 Streamflow forecast skill (in terms of CRPSS) as a function of lead time: (a) median skill and 5<sup>th</sup> to 95<sup>th</sup> percentile range for the entire domain, and (b) temporal disaggregation of forecast skill per initialisation date. Initialisation dates within the same month (4 times) are represented with the same colour and the first initialisation of each month is marked with thicker markers and lines.**  
170

Even if the forecast skill follows a similar decreasing pattern for all initialisation dates, both the maximum skill value as well as the deterioration rate differ. The highest skill (greater than 0.8) is observed for forecasts initialised in winter (December-February). In the other seasons, the forecast skill starts at around 0.7, with the lowest skill value observed for initialisations in April (just under 0.6). Even if the forecast skill deteriorates quickly and reaches a predictability value close to the one of

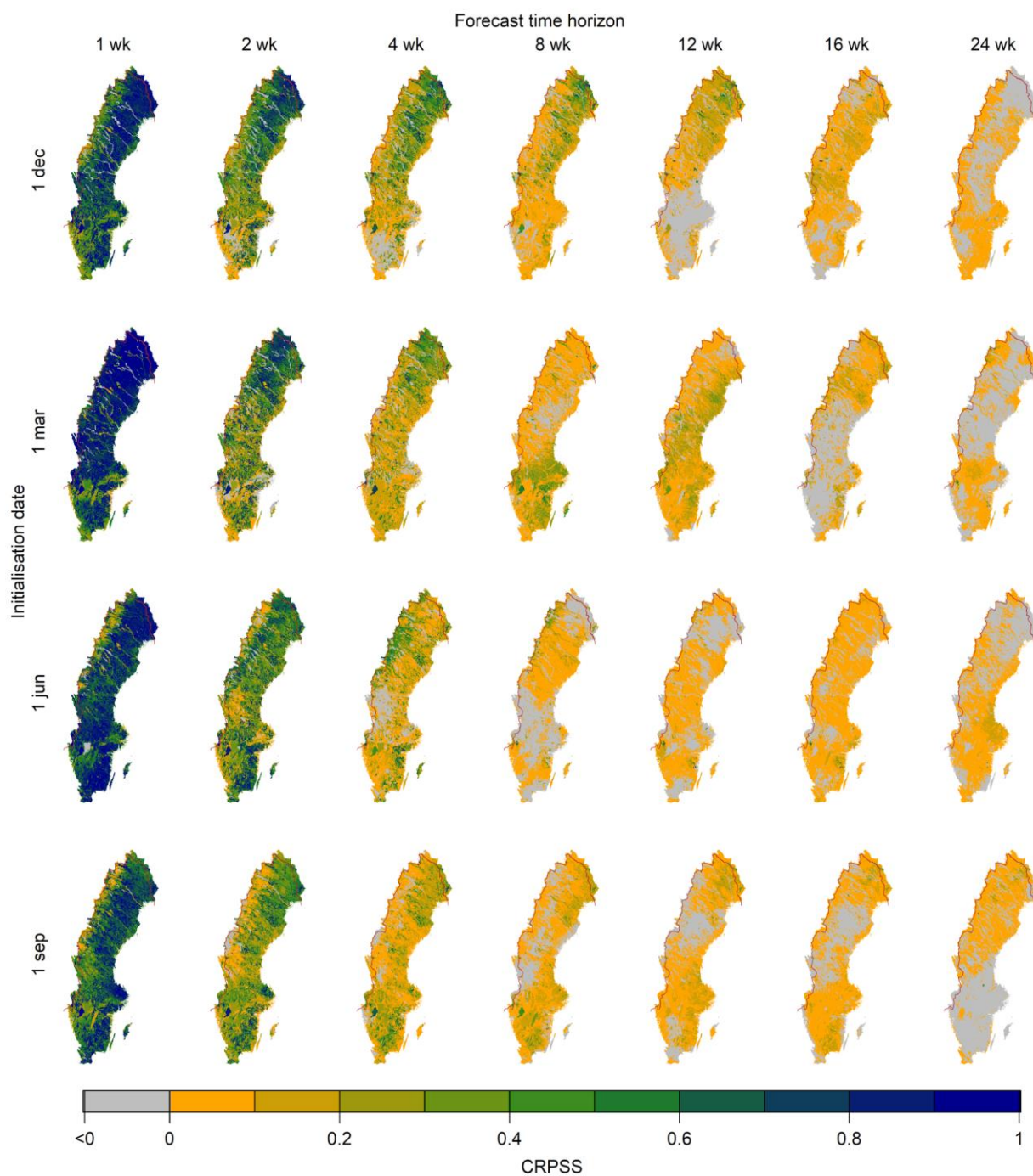




175 historical streamflow (CRPSS close to 0) in long forecast horizons, forecasts initialised in March and April (and to some extent also in February) show a small secondary peak in the skill in May. This is probably related to the predictable spring flood season in the northern parts of the country (see also Pechlivanidis et al., 2020).

The spatial distribution of forecast skill differs significantly across initialisation dates and forecast horizons (Figure 3). For instance, forecasts initialised in winter (e.g. December 1<sup>st</sup>) maintain skill for inland forested areas of northern Sweden up to 3  
180 months in the future. Forecasts initialised in spring (e.g. March 1<sup>st</sup>) show skill up to the same forecast horizon, but most notably in the southern and eastern parts of the country. Finally, forecasts issued in summer and autumn are skilful up to 2 months except for some areas in the central-western parts of the country.

For the first forecast month, forecasts tend to have a comparatively poorer skill in the mountainous areas of north-western Sweden than in other parts of the country, except when they are initialised in the spring. Agricultural areas located around  
185 some of Sweden's largest lakes, such as Lake Mälaren and Lake Vänern, also have comparatively poor forecast skill. Interestingly, high predictability would have been expected in such lakes with slow hydrological response (long memory) (see Pechlivanidis et al., 2020). However, these great lakes are heavily regulated (see Figure 1), and the model correction seems to have impacted forecast skill. Streamflow forecasts in the large, highly-regulated, rivers of northern Sweden, such as River Umeälven and River Luleälven, also lack skill (Figure 1c). Again, the regulation patterns that significantly differ from  
190 the natural regime of watercourses, are not adequately captured by the ESP. In these cases, the broader ensemble of historical streamflow is a better estimator of the future trends in streamflow. Conversely, streamflow forecasts show high skill in non-regulated rivers located in the same area and of similar size and hydrological regime, i.e. River Kalixälven and River Torneälven.

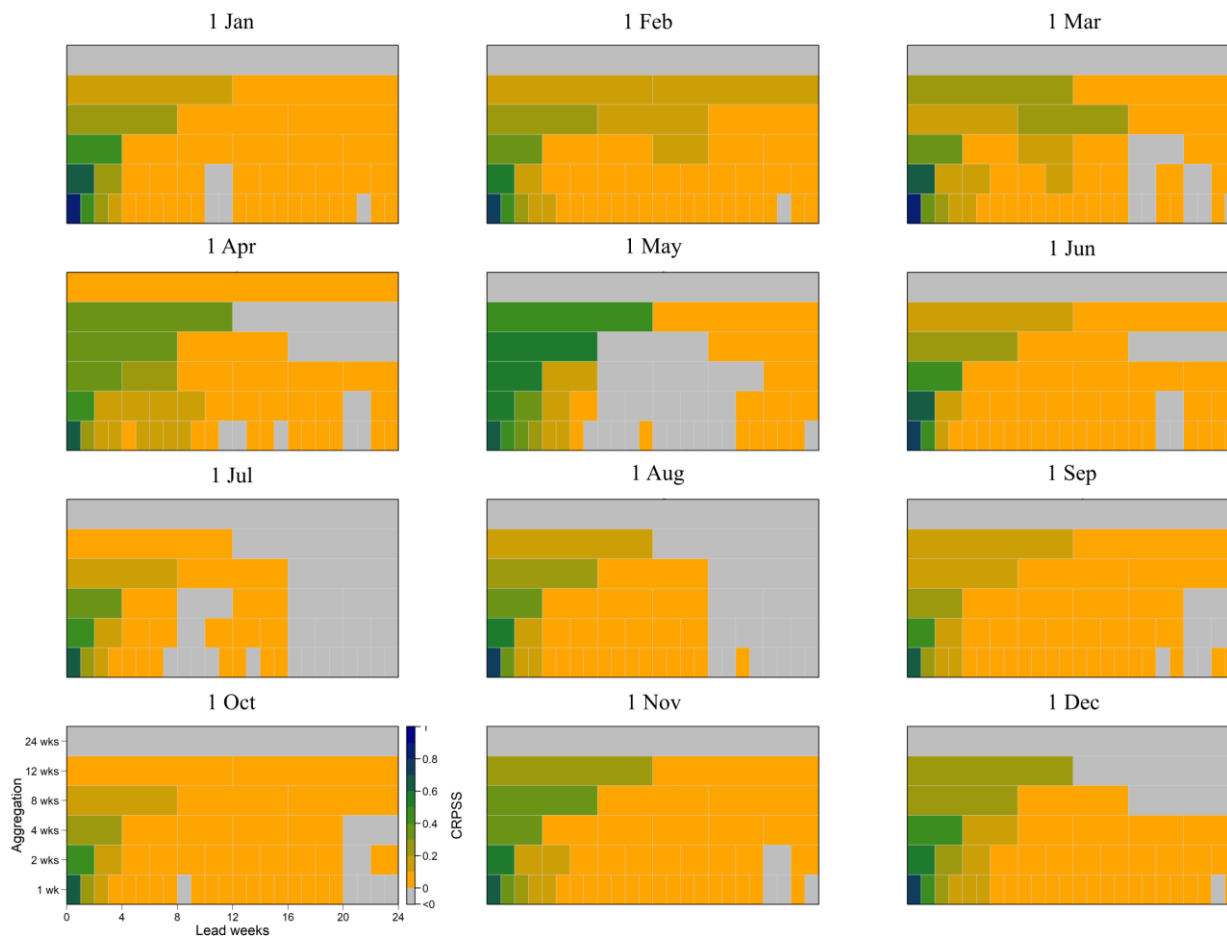


195 **Figure 3** Spatial distribution of streamflow forecast skill (in terms of CRPSS) for selected initialisation dates (rows) and forecast time horizons (columns).



### 3.2 Forecast skill as a function of temporal aggregation

We next investigate the impact of the forecast aggregation period on the forecast skill. Here, the focus is not on the spatial pattern and therefore forecast skill is averaged over the entire domain. Results show that, even if the average skill for the first  
200 forecast period decreases when aggregating over longer time periods, the forecasts remain skilful (CRPSS greater than 0) for  
aggregation periods up to 12 weeks (Figure 4). When aggregating over 24 weeks, the ESP method generally provides no  
added value with respect to historical streamflow; the predictability from ESP is very similar to the one from historical  
streamflow. Even if, as expected, forecast skill decreases when forecasts are aggregated over long periods, a comparatively  
higher skill is maintained over longer time horizons than when forecasts are aggregated over short periods. In addition,  
205 forecasts initialised in February and March are skilful up to 16 weeks ahead when aggregating over long periods (e.g. 8  
weeks), and the forecasts initialised in April and May show high skill values, even when aggregating over a 12-week period.  
This seems to be due to the high predictability of the spring flood season in May, also shown by the secondary peak in skill  
observed for these initialisations in Figure 2b. Finally, for forecasts initialised in July and October, long aggregation periods  
(e.g. 12 weeks) tend to dilute the high forecast skill observed over the first weeks.



210

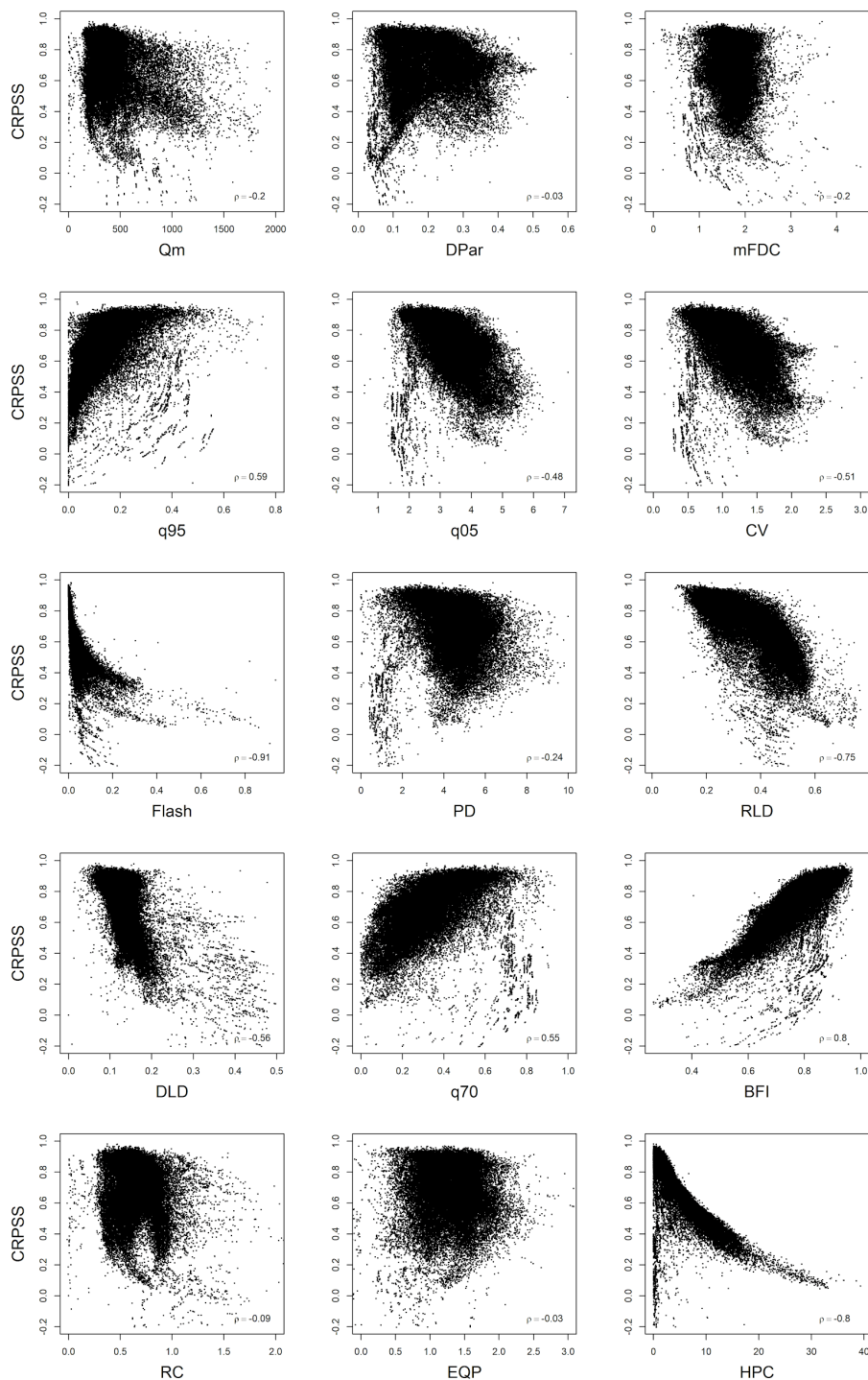
**Figure 4** Skill of streamflow forecasts as a function of lead time (weeks) initialised on the 1<sup>st</sup> of each month for selected forecast aggregation periods (i.e. 1 week, 2 weeks, 4 weeks, 8 weeks, 12 weeks, and 24 weeks). The skill is averaged over Sweden.

### 3.3 Relating streamflow signatures and forecast skill

We next investigate potential correlations between forecast skill and the 15 streamflow signatures using the non-parametric Spearman rank test. In all cases the null hypothesis (i.e. no correlation exists between forecast skill and the streamflow signature) is rejected with a level of significance of 0.01. Nevertheless, different patterns emerge when comparing forecast skill (first forecast week) for each catchment with each of the 15 streamflow signatures (Figure 5). More specifically, forecast skill is strongly inversely correlated (defined here as the Spearman's rank correlation coefficient ( $\rho$ ) being less than -0.50) with high pulse count (HPC), flashiness (Flash), rising limb density (RLD), declining limb density (DLD), and coefficient of variation (CV). Additionally, a strong direct correlation ( $\rho > 0.50$ ) is found between skill and baseflow index (BFI), normalised low streamflow (q95), and normalised relatively low streamflow (q70) indicating that slowly reacting catchments with a significant baseflow component generally experience high predictability (Harrigan et al., 2018;



225 Pechlivanidis et al., 2020). A similar analysis has been conducted for long forecast horizons (results not shown here); however, since spatial patterns in forecast skill weaken and blend in with the forecast horizon, the identified correlations are not strong. Overall, the identified correlations highlight the existence of a generally high forecast skill in slowly reacting, baseflow-dominated catchments, while low forecast skill is predominant in flashy catchments. Although this analysis indicates the existence of dependencies between streamflow signatures and forecast skill, it can still be considered limited given that a hydrological system is generally characterized by a wider set of streamflow signatures than that considered here (Pechlivanidis and Arheimer, 2015; Sawicz et al., 2011).



230

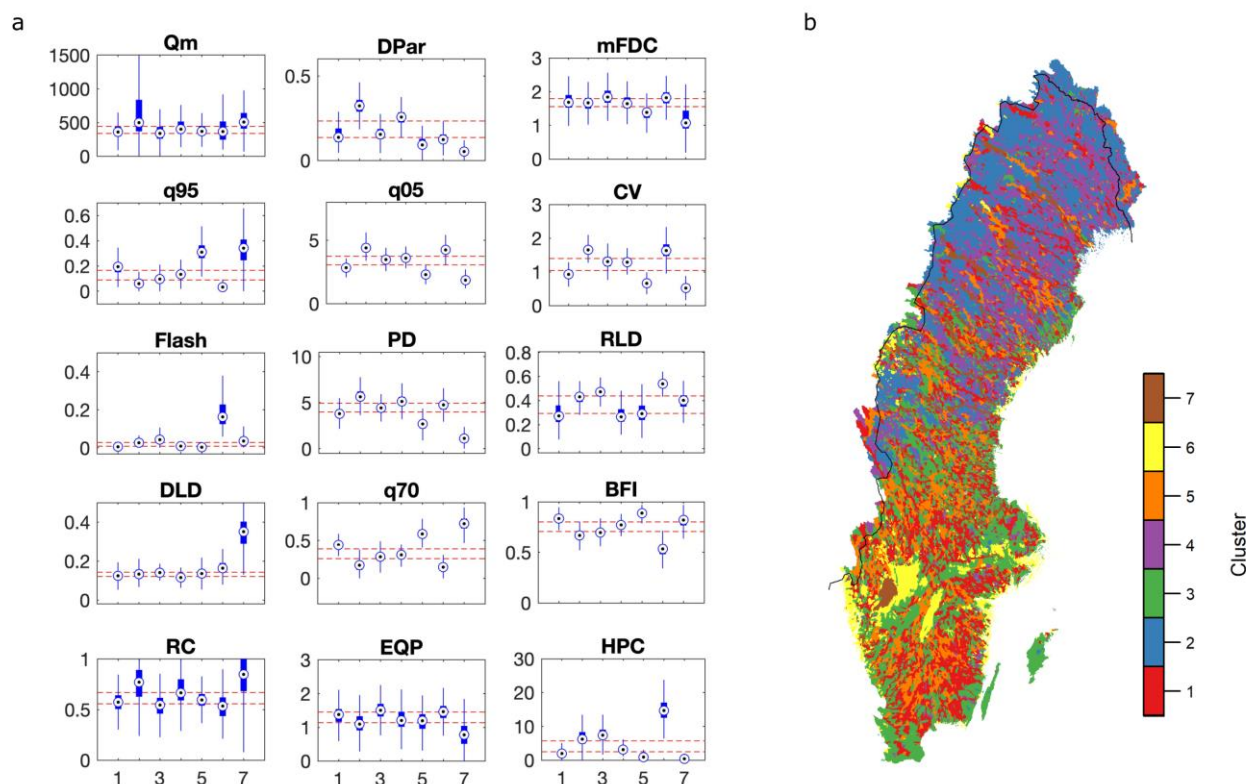
**Figure 5** Forecast skill (in terms of CRPSS) for the first forecast week for each of the 39,493 catchments in Sweden as a function of each of the 15 hydrological signatures. The non-parametric Spearman's rank correlation coefficient ( $\rho$ ) is shown for each signature.



### 3.4 Attributing streamflow forecast skill to hydrologic behaviour

235 Here, we investigate the potential attribution of streamflow predictability in the Swedish river systems to hydrological  
behaviour, given that such dependency has been highlighted in the previous analysis. Using the *k-means* clustering method,  
an optimal number of seven distinct clusters (based on a silhouette analysis using a different number of clusters; de Amorim  
and Hennig, 2015) have been obtained representing different hydrological regimes (Figure 6). Table 2 provides additional  
information on the topographic, climatological and hydrological characteristics of each cluster while the spatial variability of  
240 each of the 15 streamflow signatures, as well as of the catchment elevation, is presented in Appendix B.

Catchments clustered in regions 1 and 5 are characterised by a high baseflow contribution, a slow response to precipitation  
and, therefore, a generally small intra-annual variability. In terms of topography, these regions consist mainly of forested  
areas located in southern Sweden. Catchments in Cluster 2 are found in highland areas and boreal forest environments in  
northern Sweden, and are characterised by high seasonality due to the alternance between snow melting and accumulation.  
245 These catchments are also characterised by high runoff volumes given that they are subject to high precipitation amounts and  
low evapotranspiration rates. Agricultural and coastal areas located mainly in southern and central parts of the country are  
found in Cluster 3. These catchments are characterised by a highly variable streamflow regime and a quick response to  
precipitation, yet exhibit a long hydrograph recession. Similarly, catchments grouped in Cluster 6, which are located in low-  
land coastal and lake areas, experience flashy responses, as well as high streamflows and seasonal variations. Boreal forest  
250 catchments in the northern part of the country are grouped in Cluster 4, and are characterised by a generally high runoff  
coefficient and a low response to precipitation events. Finally, catchments in Cluster 7 are found along several large and  
highly-regulated rivers in northern Sweden. These catchments are characterised by a small variability but high streamflow  
volumes and runoff coefficients explained by anthropogenic regulations.



255 **Figure 6 Clustering analysis: (a) distribution of the 15 hydrological signatures in each clustered region. The red lines represent the 33<sup>rd</sup> and 66<sup>th</sup> percentiles for each signature; (b) geographical distribution of hydrologically similar regions over Sweden.**

**Table 2 Main characteristics of each of the hydrological clusters.**

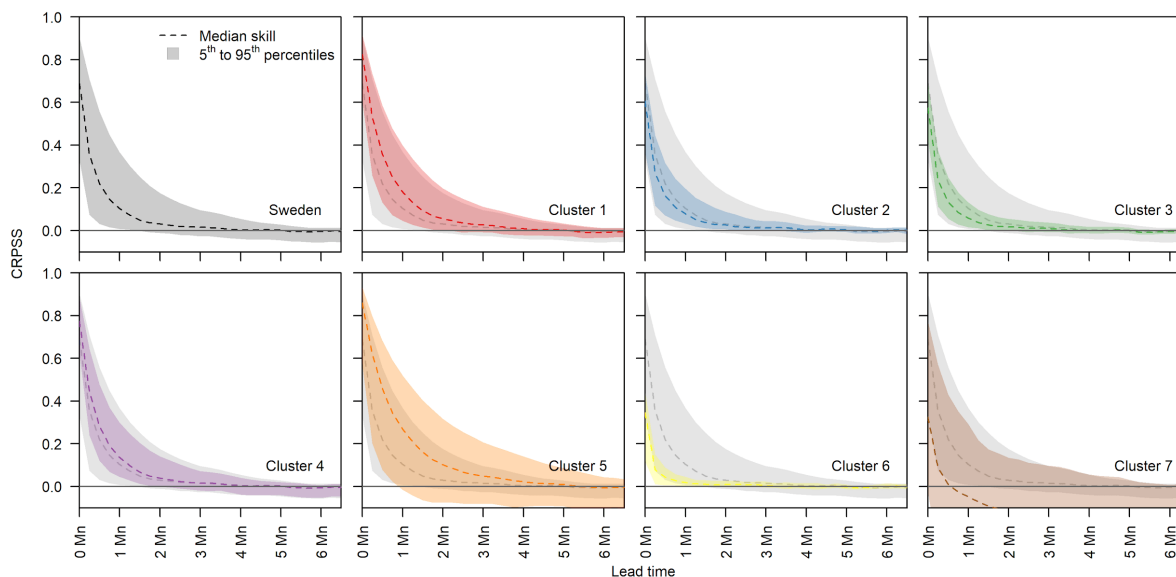
Cluster region	Number of catchments	Mean elevation (m a.s.l.)	Mean annual precipitation (mm yr <sup>-1</sup> )	Mean annual potential evapotran spiration (mm yr <sup>-1</sup> )	Mean annual actual evapotran spiration (mm yr <sup>-1</sup> )	Low streamflow signatures	High streamflow signatures
1	8408	247.66	649.97	315.84	280.39	q05, CV, Flash, PD, RLD, HPC	q95, q70, BFI
2	6704	477.38	732.18	184.94	175.17	q95, q70, BFI, EQP	Qm, DPar, q05, CV, PD, RC, HPC
3	8273	162.36	654.22	339.79	294.87	BFI, RC	Flash, RLD, EQP, HPC
4	8297	370.18	653.06	237.18	219.51	Flash, RLD, DLD	DPar, PD





5	4355	259.55	643.25	302.36	270.87	DPar, mFDC, q05, CV, Flash, PD, HPC	q95, q70, BFI
6	2421	22.47	732.18	381.68	305.74	DPar, q95, q70, BFI	mFDC, q05, CV, Flash, RLD, DLD, HPC
7	1025	224.10	618.54	297.50	266.87	DPar, mFDC, q05, CV, PD, EQP, HPC	Qm, q95, DLD, q70, RC,

260 The last step is to analyse the streamflow forecast skill in each hydrological cluster (Figure 7). Note that here we have aggregated the skill for all initialisations and hence we have not accessed the seasonal distribution of the forecast skill; however, we have focused on the detection of dependencies between skill and hydrologic regimes. Nevertheless, we note that the clusters with high (or poor) forecast skill in relation to the others are the same independently of the target month/week. According to Pechlivanidis et al. (2020), this is due to the intraannual variability of the streamflow response, which consistently varies between the catchments from the different clusters. Clusters 1, 4, and 5, which are all considered to have high river memory due to baseflow domination, small intraannual variability, and generally low response to precipitation (see Table 2), have a higher median skill than the country-average. Among them, cluster 5 has the highest overall median skill for all time horizons but also, interestingly, the highest spread in forecast skill as a function of lead time. All of these clusters correspond mainly to forested catchments across the country. Cluster 3 and, most notably cluster 6, have a lower median skill than the country-average. These catchments are characterized by short river memory with flashy responses and are strongly driven by precipitation and strong seasonal variations. Similar results are observed for cluster 2. In this case, however, the median skill is closer to the country-average skill than for clusters 3 and 6. The response from catchments in cluster 2 is highly seasonal due to snow accumulation and melting processes, and hence not as rainfall-driven as for clusters 3 and 6. Finally, cluster 7, which contains the catchments along the large regulated rivers in northern Sweden, is the only set of catchments in which the median forecast skill reaches negative values, including also a large spread in the skill values (5<sup>th</sup> and 95<sup>th</sup> percentiles). In these catchments, the ESP was expected to be outperformed by historical streamflow since, as previously mentioned, historical streamflows benefit from the AR model correction throughout the forecast period and thus can better reproduce regulation patterns with low intraannual variability.



280 **Figure 7 Streamflow forecast skill (in terms of CRPSS) as a function of lead time for the entire country (top-left corner; also shown in Figure 2a) and each of the 7 clusters. The median skill and range for Sweden are provided in the background of Clusters 1-7 to provide a reference for the values of each cluster.**

## 4 Discussion

### 4.1 Challenges and opportunities in an operational forecasting service

285 The results obtained in this study indicate that ESP seasonal forecasts produced with the operational S-HYPE hydrological model are skilful with respect to historical streamflow on average up to 3 months ahead, despite the large temporal and spatial variabilities. This positive skill would make operational seasonal forecasts, in general, suitable to guide decision-making for applications requiring long-term planning, (e.g. water resources management, agriculture). Nevertheless, issues related to the modelling setup, the forecast methodology, the hydro-climatic characteristics of the Swedish river systems (e.g.  
290 high degree of regulation in many water courses), among others, can impact the reliability of such a forecasting service.

The ESP forecasting approach is limited by its use of historical meteorological forcing data to generate the streamflow forecasts, making it unable to capture unprecedented meteorological events. Consequently, extreme events that lay outside the observed range will inevitably be misrepresented, limiting the service's predictability of extreme conditions which can be important to some decision makers. This issue may be addressed by using numerical weather prediction (NWP) models to  
295 predict the future climate (Monhart et al., 2019). However, although NWPs are not constrained by the observational period, they are limited by the chaotic nature of the weather system (aleatory uncertainty), which makes small errors in the initial conditions grow significant with time. In addition, NWP-based forecasts require post-processing (i.e. downscaling and bias-



adjustment) to be suitable to use in impact studies. Finally, their added value for streamflow forecasting in comparison to ESP is shown to be limited in Sweden, with the possible exception of southern Sweden (Arnal et al., 2018).

300 As expected, ESP forecast skill decreases rapidly with time particularly in fast responding river systems. Results have shown that monthly initialization, which is the most common initialization frequency of climate prediction models, is critical to set high skill values; however, such frequency in the initialization cannot account for skill deterioration within the month. In this setting, increasing the initialisation frequency to, for instance, once a week would allow to maintain a high skill up to monthly time horizons. Nevertheless, considering that climate prediction models are not developed to represent the exact

305 daily dynamics of the natural systems and that forecasts are therefore aggregated into long time periods, more frequent (e.g. daily) forecast initialisations are not expected to provide an added value to the forecast service. Moreover, forecast information from such frequent initialisations can easily be misinterpreted by decision-makers (Schepen et al., 2016).

Regarding the aggregation of forecast outputs, most studies have focused on a 1-month aggregation period as it is reported to provide an “*appropriate forecast at the seasonal scale and a proxy of the underlying distribution*” (Emerton et al., 2018;

310 Meißner et al., 2017; Yossef et al., 2013). Nevertheless, there may be value in considering aggregation periods different from the standard monthly aggregation (or even adaptive aggregation periods) for providing guidance on the usability of the forecasts for decision-making. This choice should be driven by user needs and our finding is that aggregations over periods longer than the month do not necessarily mean a loss in skill. Here, we have observed that, in Sweden, long aggregated forecasts covering the spring flood season tend to gain in skill. Overall, however, from time horizons of, on average, 4

315 months into the future, forecasts have very low or no skill regardless of the aggregation period of choice.

Another important factor driving hydrological predictability at the seasonal scale is the adequate knowledge of the initial hydrological conditions (Shukla et al., 2013). In many cases, ESP forecasts are initialized based on the latest available model state (modelled reality), which may significantly deviate from the actual hydrological state (observed reality). Incorporating the latest available observations into forecast initialisation can thus be especially important to bridge the gap between

320 modelled and observed reality. Here, an AR-updating method is used to correct the model outputs whenever observations are available, with the objective to generate forecasts which are as close as possible to observed reality (see Section 2.2). This method is straightforward and easy to implement, and takes advantage of streamflow memory to not only correct the initial forecast state but also the following forecast horizons when observations are no longer available. More advanced data assimilation methods could be considered in further developments of the presented operational forecast system, such as

325 Kalman Filters (Sun et al., 2016), allowing not only for a correction of model outputs, but also an adjustment of model states and thus of process representation (Musuuza et al., 2020).

#### 4.2 Impact of regulation on forecasting skill

One of the main applications of long-term forecasting in Sweden is for planning reservoir operation during the spring flood season (May-July) (Foster et al., 2018). However, forecast skill is low for the main hydropower-producing heavily-regulated

330 rivers in the northern parts of the country, where the highest spring flood peak volumes occur. In these locations, ESP



forecasts may be used to adequately predict the water inflows to the reservoirs from the headwaters but they would have no value for predicting reservoir outflows with respect to using the ensemble of historical streamflow. In order to further understand the impact of streamflow regulation on the results, we evaluated the ESP forecasts using model simulations (without AR correction) as reference. Forecast skill was in this case very high for the highly regulated rivers where low  
335 forecast skill was obtained in the main analysis. This exercise shows that the regulation routines in some river stations in the S-HYPE model still need improvement in order to correctly represent the management rules dominating regulated streamflow patterns. This issue is not as obvious in less heavily regulated rivers elsewhere in the country, where ESP forecasts are generally skilful.

With the exception of River Luleälven and other comparatively smaller rivers in the Swedish mountains, the S-HYPE model  
340 performance is generally high for most locations, including the large rivers in the northern parts of the country. Similarly, ESP seasonal forecasts are skilful for non-regulated rivers in that area that also benefit from long-term planning. More specifically, River Torneälven and, to a lesser extent, River Kalixälven are susceptible to severe ice break-up events in connection to the spring melt season and subsequent spring flooding (Zachrisson, 1989). An important factor in predicting the timing of the ice break-up is the onset of spring flood due to snowmelt. Skilful ESP seasonal forecasts for these rivers  
345 should allow for early planning and allocation of resources that could greatly contribute to mitigate potentially severe ice break-ups.

### 4.3 Regionalisation of skill in other domains

Besides streamflow regulation patterns, certain characteristics of the hydrological regime have a high impact on hydrological predictability. Here we have shown that forecast skill is high in baseflow-dominated catchments where past hydrologic  
350 conditions drive the catchment response, while it is low in flashy catchments where rainfall drives the streamflow dynamics and hence accurate rainfall forecasts are crucial. This corresponds well with findings from similar studies over different geographical domains (Harrigan et al., 2018; Pechlivanidis et al., 2020). However, contrary to the findings by (Harrigan et al., 2018), who identified a specific streamflow signature (i.e. the baseflow index) as the main driver of hydrological predictability, we have found that, for Sweden, it is instead the result of the overall hydrological behaviour, even if some  
355 specific streamflow signatures may have a greater impact than others. Additionally, the seven clusters not only differ in terms of hydrological response, but also in terms of climatological patterns and physiographic characteristics.

The results obtained here may contribute to guiding in which areas, seasons, and how long into the future ESP hydrological forecasts provide an added value not only for SMHI's forecasting and warning service, but most importantly for guiding decision-making in critical services such as hydropower management and risk reduction. Here, we note that, even if the  
360 hydro-climatic gradient of Sweden does not fully represent the equivalent gradients over the continent or the globe, our results are however transferable to other locations with similar climatological and hydrological conditions as it has also been highlighted in Pechlivanidis et al. (2020).



## 5 Conclusions

Herein, we analysed the skill of ESP re-forecasts using the operational S-HYPE hydrological model over Sweden in an effort to evaluate the suitability of this methodology for producing reliable forecasts at the seasonal scale within SMHI's hydrological forecasting and warning service as well as for other activities requiring long-term planning. In addition, we aimed at understanding the underlying patterns and drivers behind skilful forecasts and attributed the seasonal predictability to hydrological characteristics. About 39,400 catchments, which lie along Sweden's strong hydroclimatic gradient, were investigated. The main conclusions of this study are:

- The skill of the ESP forecasts varies both geographically and seasonally, and depends on the initialization month and aggregation period. Moreover, the skill decreases rapidly with time particularly in fast responding river systems; however, the ESP forecasts are generally skilful up to 3 months into the future. Forecasts are most skilful during the winter months for the northern parts of the country, except for the highly-regulated hydropower-producing rivers.
- Initialization frequency is a key driver affecting streamflow forecasting skill. Monthly initialisations are critical to preserve high forecast skill values without, however, addressing the skill deterioration over the first forecast month. Increasing the initialisation frequency to once a week allows maintaining the high skill up to monthly time horizons.
- The river systems in Sweden can be categorised into 7 clusters based on similarities in streamflow signatures. This results in an improved understanding of the dominating hydrological processes, which are shown to vary spatially and seasonally. Particularly, dominant streamflow generation processes over the mountainous regions, including baseflow and snow accumulation/melting, dampening from lakes, and reservoir alterations could explain the hydrological clustering across the country.
- A link between forecast skill and streamflow signatures has been detected. Over the 15 streamflow signatures investigated here, baseflow index, flashiness, rising limb density, coefficient of variation and high pulse count show strong correlations with forecast skill. Streamflow forecasts are most skilful for slowly-reacting catchments due to snow-related processes and/or dampening from lakes and baseflow-dominated catchments (river systems with long memory). Conversely, forecasts are least skilful for catchments with a flashy response to rainfall (river systems with short memory).

## Appendix A: Continuous Ranked Probability Skill Score

The Continuous Ranked Probability Score (CRPS; Hersbach, 2000) is a common measure of ensemble forecast performance. It is formulated as the integral squared distance between the forecast ensemble and the observation step function. The CRPS is then averaged over all forecasts of the evaluation period. Its dimension is that of the forecast variable being assessed, here  $m^3s^{-1}$ , and its value is equivalent to the mean absolute error when applied to deterministic forecasts.

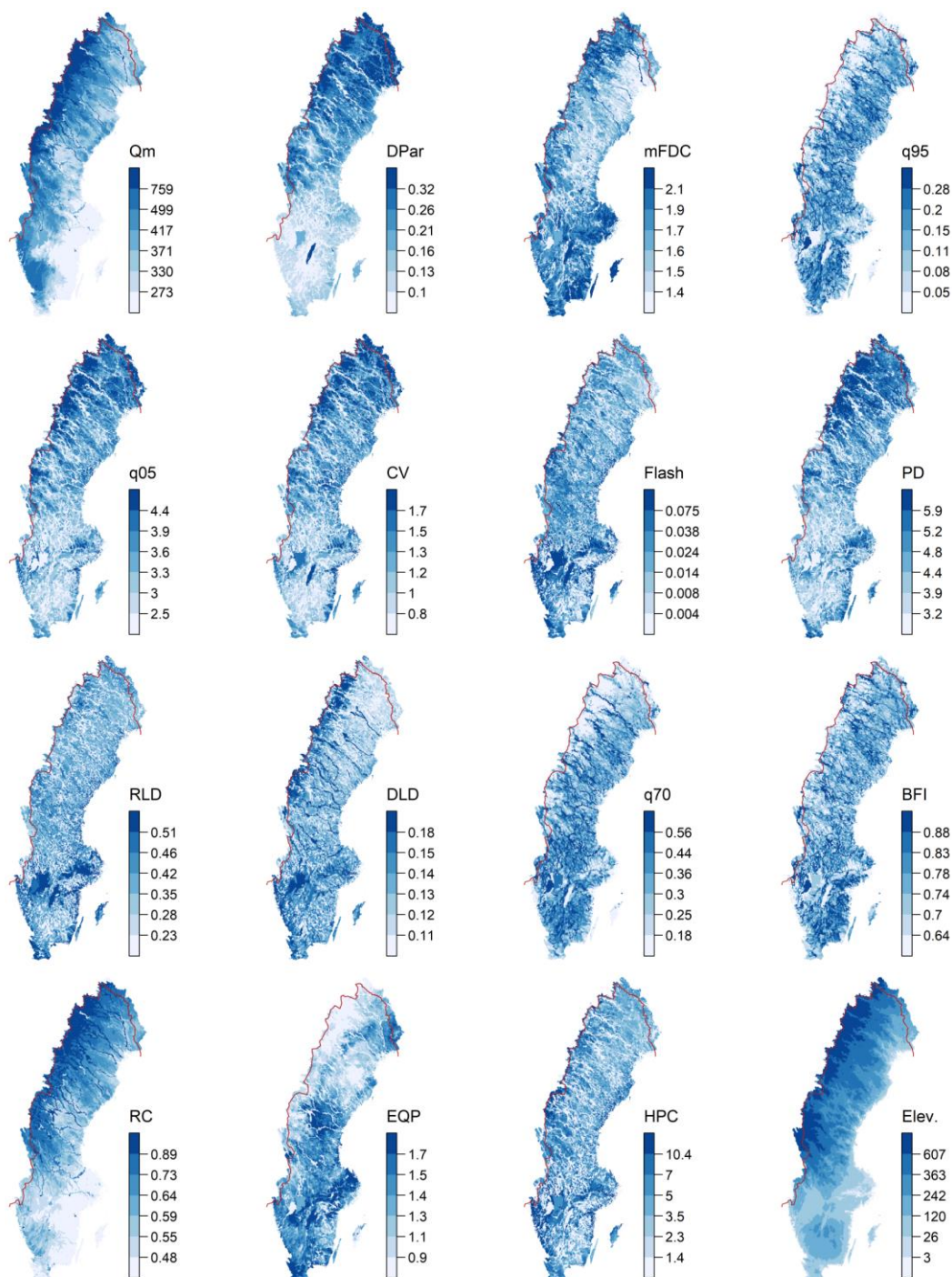


395 The Continuous Ranked Probability Skill Score (CRPSS) is then assessed by comparing the CRPS value of the investigated  
forecast system (here, ESP) to that of a selected benchmark (here, an ensemble of historical streamflow selected from the  
period 1981 – 2010). Given  $CRPS^{sys}$ , the CRPS of the forecasting system,  $CRPS^{bench}$  the CRPS of the benchmark and  
 $CRPS^{pft}$  the optimal CRPS value (0), the CRPSS is formulated according to Eq. A1.

$$CRPSS = \frac{CRPS^{bench} - CRPS^{sys}}{CRPS^{bench} - CRPS^{pft}} \quad (A1)$$

400 This metric is non-dimensional and takes values between 1 (optimum) and low negative values. Positive (negative) skill  
scores indicate that the forecast system performs better (worse) than the benchmark in terms of CRPS. Skill scores close to 0  
indicate that the evaluated forecast system has equivalent performance to that of the benchmark.

## Appendix B: Spatial variability of hydrological signatures





405 **Figure B1 Spatial variability of the 15 modelled hydrological signatures including the catchment mean elevation. The colour intervals are based on the quantiles (15% intervals) of each signature (and elevation) distribution. A clarification of the abbreviations used here can be found in Table 1 in the main text.**

### Data availability

The HYPE model code is available from the HYPEweb portal (<https://hypeweb.smhi.se/model-water/>). The meteorological data used for driving the ESP re-forecasts (PTHBV) is available from the luftweb portal (<https://luftweb.smhi.se>), and the  
410 hydrological data used for model correction is available from the vattenweb portal (<https://vattenwebb.smhi.se/>).

### Author contribution

M.G.L. contributed with the study design, model runs, result analysis and figures, interpretation of the results, and writing the manuscript; L.C. contributed with the study design, code development for post-processing of results, the interpretation of results, and writing the manuscript; I.G.P. was responsible for the project management and funding acquisition, and  
415 contributed with the basic idea, the study design, clustering analysis and figures, interpretation of the results, and writing the manuscript.

### Competing interests

The authors declare that they have no conflict of interest.

### Financial support

420 This work was funded by the project “Long-term forecasts of wind and hydropower supply in a fluctuating climate – Importance for production planning and investments in energy storage and power transmission” granted by the Swedish Energy Agency under grant agreement No. 46412-1. Funding was also received from the EU Horizon 2020 project S2S4E (Subseasonal to seasonal forecasting for the energy sector) under Grant Agreement 776787. This study was also partially funded by the EU Horizon 2020 project PrimeWater (Delivering advanced predictive tools from medium to seasonal range  
425 for water dependent industries exploiting the cross-cutting potential of EO and hydroecological modeling) under the Grant Agreement 870497.

### References

de Amorim, R. C. and Hennig, C.: Recovering the number of clusters in data sets with noise features using feature rescaling factors, *Inf. Sci.*, 324, 126–145, doi:10.1016/j.ins.2015.06.039, 2015.





- 430 Apel, H., Abdykerimova, Z., Agalhanova, M., Baimaganbetov, A., Gavrilenko, N., Gerlitz, L., Kalashnikova, O., Unger-Shayesteh, K., Vorogushyn, S. and Gafurov, A.: Statistical forecast of seasonal discharge in Central Asia using observational records: development of a generic linear modelling tool for operational water resource management, *Hydrol. Earth Syst. Sci.*, 22(4), 2225–2254, doi:<https://doi.org/10.5194/hess-22-2225-2018>, 2018.
- 435 Arnal, L., Cloke, H. L., Stephens, E., Wetterhall, F., Prudhomme, C., Neumann, J., Krzeminski, B. and Pappenberger, F.: Skilful seasonal forecasts of streamflow over Europe?, *Hydrol. Earth Syst. Sci.*, 22(4), 2057–2072, 2018.
- Batté, L. and Déqué, M.: Randomly correcting model errors in the ARPEGE-Climate v6.1 component of CNRM-CM: applications for seasonal forecasts, *Geosci. Model Dev.*, 9(6), 2055–2076, doi:<https://doi.org/10.5194/gmd-9-2055-2016>, 2016.
- 440 Bennett, J. C., Wang, Q. J., Robertson, D. E., Schepen, A., Li, M. and Michael, K.: Assessment of an ensemble seasonal streamflow forecasting system for Australia, *Hydrol. Earth Syst. Sci.*, 21(12), 6007–6030, doi:<https://doi.org/10.5194/hess-21-6007-2017>, 2017.
- Bergström, S.: Development and Application of a Conceptual Runoff Model for Scandinavian Catchments, Swedish Meteorological and Hydrological Institute (SMHI), Norrköping, Sweden., 1976.
- 445 Bohn, T. J., Sonessa, M. Y. and Lettenmaier, D. P.: Seasonal Hydrologic Forecasting: Do Multimodel Ensemble Averages Always Yield Improvements in Forecast Skill?, *J. Hydrometeorol.*, 11(6), 1358–1372, doi:10.1175/2010JHM1267.1, 2010.
- Bruno Soares, M., Alexander, M. and Dessai, S.: Sectoral use of climate information in Europe: A synoptic overview, *Clim. Serv.*, 9, 5–20, doi:10.1016/j.cliser.2017.06.001, 2018.
- 450 Candogan Yossef, N., Van Beek, R., Weerts, A., Winsemius, H. and Bierkens, M. F. P.: Skill of a global forecasting system in seasonal ensemble streamflow prediction, *Hydrol. Earth Syst. Sci.*, 21(8), 4103–4114, doi:<https://doi.org/10.5194/hess-21-4103-2017>, 2017.
- Crochemore, L., Ramos, M. H., Pappenberger, F. and Perrin, C.: Seasonal streamflow forecasting by conditioning climatology with precipitation indices, *Hydrol. Earth Syst. Sci.*, 21(3), 1573–1591, doi:10.5194/hess-21-1573-2017, 2017.
- Crochemore, L., Ramos, M. -H. and Pechlivanidis, I. G.: Can Continental Models Convey Useful Seasonal Hydrologic Information at the Catchment Scale?, *Water Resour. Res.*, 56(2), doi:10.1029/2019WR025700, 2020.
- 455 DeChant, C. and Moradkhani, H.: Improving the Characterization of Initial Condition for Ensemble Streamflow Prediction Using Data Assimilation, *Hydrol. Earth Syst. Sci.*, doi:10.5194/hess-15-3399-2011, 2011.
- Donnelly, C., Andersson, J. C. M. and Arheimer, B.: Using flow signatures and catchment similarities to evaluate the E-HYPE multi-basin model across Europe, *Hydrol. Sci. J.*, 61(2), 255–273, doi:10.1080/02626667.2015.1027710, 2016.
- 460 Emerton, R., Zsoter, E., Arnal, L., Cloke, H. L., Muraro, D., Prudhomme, C., Stephens, E. M., Salamon, P. and Pappenberger, F.: Developing a global operational seasonal hydro-meteorological forecasting system: GloFAS-Seasonal v1.0, *Geosci. Model Dev.*, 11(8), 3327–3346, doi:<https://doi.org/10.5194/gmd-11-3327-2018>, 2018.
- Euser, T., Winsemius, H. C., Hrachowitz, M., Fenicia, F., Uhlenbrook, S. and Savenije, H. H. G.: A framework to assess the realism of model structures using hydrological signatures, *Hydrol. Earth Syst. Sci.*, 17(5), 1893–1912, doi:10.5194/hess-17-1893-2013, 2013.



- 465 Foster, K., Bertacchi Uvo, C. and Olsson, J.: The development and evaluation of a hydrological seasonal forecast system prototype for predicting spring flood volumes in Swedish rivers, *Hydrol. Earth Syst. Sci.*, 22(5), 2953–2970, doi:<https://doi.org/10.5194/hess-22-2953-2018>, 2018.
- Girons Lopez, M., Di Baldassarre, G. and Seibert, J.: Impact of social preparedness on flood early warning systems, *Water Resour. Res.*, 53(1), 522–534, doi:[10.1002/2016WR019387](https://doi.org/10.1002/2016WR019387), 2017.
- 470 Giuliani, M., Crochemore, L., Pechlivanidis, I. and Castelletti, A.: From skill to value: isolating the influence of end-user behaviour on seasonal forecast assessment, *Hydrol. Earth Syst. Sci. Discuss.*, 1–20, doi:<https://doi.org/10.5194/hess-2019-659>, 2020.
- Greuell, W., Franssen, W. H. P. and Hutjes, R. W. A.: Seasonal streamflow forecasts for Europe – Part 2: Sources of skill, *Hydrol. Earth Syst. Sci.*, 23(1), 371–391, doi:[10.5194/hess-23-371-2019](https://doi.org/10.5194/hess-23-371-2019), 2019.
- 475 Gupta, H. V., Kling, H., Yilmaz, K. K. and Martinez, G. F.: Decomposition of the mean squared error and NSE performance criteria: Implications for improving hydrological modelling, *J. Hydrol.*, 377(1), 80–91, doi:[10.1016/j.jhydrol.2009.08.003](https://doi.org/10.1016/j.jhydrol.2009.08.003), 2009.
- Harrigan, S., Prudhomme, C., Parry, S., Smith, K. and Tanguy, M.: Benchmarking ensemble streamflow prediction skill in the UK, *Hydrol. Earth Syst. Sci.*, 22(3), doi:[10.5194/hess-22-2023-2018](https://doi.org/10.5194/hess-22-2023-2018), 2018.
- 480 Hersbach, H.: Decomposition of the Continuous Ranked Probability Score for Ensemble Prediction Systems, *Weather Forecast.*, 15(5), 559–570, doi:[10.1175/1520-0434\(2000\)015<0559:DOTCRP>2.0.CO;2](https://doi.org/10.1175/1520-0434(2000)015<0559:DOTCRP>2.0.CO;2), 2000.
- Jeong, D.-I. and Kim, Y.-O.: Rainfall-runoff models using artificial neural networks for ensemble streamflow prediction, *Hydrol. Process.*, 19(19), 3819–3835, doi:[10.1002/hyp.5983](https://doi.org/10.1002/hyp.5983), 2005.
- Johansson, B.: Estimation of areal precipitation for hydrological modelling in Sweden, [online] Available from: <https://gupea.ub.gu.se/handle/2077/15575> (Accessed 24 June 2020), 2002.
- 485 Johnson, S. J., Stockdale, T. N., Ferranti, L., Balmaseda, M. A., Molteni, F., Magnusson, L., Tietsche, S., Decremer, D., Weisheimer, A., Balsamo, G., Keeley, S. P. E., Mogensen, K., Zuo, H. and Monge-Sanz, B. M.: SEAS5: the new ECMWF seasonal forecast system, *Geosci. Model Dev.*, 12(3), 1087–1117, doi:<https://doi.org/10.5194/gmd-12-1087-2019>, 2019.
- Kuentz, A., Arheimer, B., Hundecha, Y. and Wagener, T.: Understanding hydrologic variability across Europe through catchment classification, *Hydrol. Earth Syst. Sci.*, 21(6), 2863–2879, doi:[10.5194/hess-21-2863-2017](https://doi.org/10.5194/hess-21-2863-2017), 2017.
- 490 Lindström, G. and Alexandersson, H.: Recent Mild and Wet Years in Relation to Long Observation Records and Future Climate Change in Sweden, *AMBIO J. Hum. Environ.*, 33(4), 183–186, doi:[10.1579/0044-7447-33.4.183](https://doi.org/10.1579/0044-7447-33.4.183), 2004.
- Lindström, G. and Carlsson, B.: Evaluation of updating methods for short range forecasting by the HBV model, in *Proceedings XXI Nordic Hydrological Conference*, vol. 46, pp. 380–386, Nordic Hydrological Program, Uppsala, Sweden., 2000.
- 495 Lindström, G., Pers, C., Rosberg, J., Strömqvist, J. and Arheimer, B.: Development and testing of the HYPE (Hydrological Predictions for the Environment) water quality model for different spatial scales, *Hydrol. Res.*, 41(3–4), 295–319, doi:[10.2166/nh.2010.007](https://doi.org/10.2166/nh.2010.007), 2010.



- 500 Macian-Sorribes, H., Pechlivanidis, I., Crochemore, L. and Pulido-Velazquez, M.: Fuzzy Postprocessing to Advance the Quality of Continental Seasonal Hydrological Forecasts for River Basin Management, *J. Hydrometeorol.*, 21(10), 2375–2389, doi:10.1175/JHM-D-19-0266.1, 2020.
- Meißner, D., Klein, B. and Ionita, M.: Development of a monthly to seasonal forecast framework tailored to inland waterway transport in central Europe, *Hydrol. Earth Syst. Sci.*, 21(12), 6401–6423, doi:https://doi.org/10.5194/hess-21-6401-2017, 2017.
- 505 Monhart, S., Zappa, M., Spirig, C., Schär, C. and Bogner, K.: Subseasonal hydrometeorological ensemble predictions in small- and medium-sized mountainous catchments: benefits of the NWP approach, *Hydrol. Earth Syst. Sci.*, 23(1), 493–513, doi:https://doi.org/10.5194/hess-23-493-2019, 2019.
- Muhammad, A., Stadnyk, T. A., Unduche, F. and Coulibaly, P.: Multi-Model Approaches for Improving Seasonal Ensemble Streamflow Prediction Scheme with Various Statistical Post-Processing Techniques in the Canadian Prairie Region, *Water*, 10(11), 1604, doi:10.3390/w10111604, 2018.
- 510 Musuuz, J. L., Gustafsson, D., Pimentel, R., Crochemore, L. and Pechlivanidis, I.: Impact of Satellite and In Situ Data Assimilation on Hydrological Predictions, *Remote Sens.*, 12(5), 811, doi:10.3390/rs12050811, 2020.
- Olsson, J., Uvo, C. B., Foster, K. and Yang, W.: Technical Note: Initial assessment of a multi-method approach to spring-flood forecasting in Sweden, *Hydrol. Earth Syst. Sci.*, 20(2), 659–667, doi:https://doi.org/10.5194/hess-20-659-2016, 2016.
- 515 Pappenberger, F., Ramos, M. H., Cloke, H. L., Wetterhall, F., Alfieri, L., Bogner, K., Mueller, A. and Salamon, P.: How do I know if my forecasts are better? Using benchmarks in hydrological ensemble prediction, *J. Hydrol.*, 522, 697–713, doi:10.1016/j.jhydrol.2015.01.024, 2015a.
- Pappenberger, F., Cloke, H. L., Parker, D. J., Wetterhall, F., Richardson, D. S. and Thielen, J.: The monetary benefit of early flood warnings in Europe, *Environ. Sci. Policy*, 51, 278–291, doi:10.1016/j.envsci.2015.04.016, 2015b.
- 520 Pechlivanidis, I. and Arheimer, B.: Large-scale hydrological modelling by using modified PUB recommendations : the India-HYPE case, *Hydrol. Earth Syst. Sci.*, 19(11), 4559–4579, 2015.
- Pechlivanidis, I., Bosshard, T., Spångmyr, H., Lindström, G., Gustafsson, D. and Arheimer, B.: Uncertainty in the Swedish Operational Hydrological Forecasting Systems, in *Vulnerability, Uncertainty, and Risk*, pp. 253–262, Liverpool, UK., 2014.
- Pechlivanidis, I. G., Gupta, H. and Bosshard, T.: An Information Theory Approach to Identifying a Representative Subset of Hydro-Climatic Simulations for Impact Modeling Studies, *Water Resour. Res.*, 54(8), 5422–5435, doi:10.1029/2017WR022035, 2018.
- 525 Pechlivanidis, I. G., Crochemore, L., Rosberg, J. and Bosshard, T.: What Are the Key Drivers Controlling the Quality of Seasonal Streamflow Forecasts?, *Water Resour. Res.*, 56(6), e2019WR026987, doi:10.1029/2019WR026987, 2020.
- Sawicz, K., Wagener, T., Sivapalan, M., Troch, P. A. and Carrillo, G.: Catchment classification: empirical analysis of hydrologic similarity based on catchment function in the eastern USA, *Hydrol. Earth Syst. Sci.*, 15(9), 2895–2911, doi:10.5194/hess-15-2895-2011, 2011.
- 530 Schepen, A., Zhao, T., Wang, Q. J., Zhou, S. and Feikema, P.: Optimising seasonal streamflow forecast lead time for operational decision making in Australia, *Hydrol. Earth Syst. Sci.*, 20(10), 4117–4128, doi:https://doi.org/10.5194/hess-20-4117-2016, 2016.



- 535 Shukla, S., Sheffield, J., Wood, E. F. and Lettenmaier, D. P.: On the sources of global land surface hydrologic predictability, *Hydrol. Earth Syst. Sci.*, 17(7), 2781–2796, doi:10.5194/hess-17-2781-2013, 2013.
- Singla, S., Céron, J.-P., Martin, E., Regimbeau, F., Déqué, M., Habets, F. and Vidal, J.-P.: Predictability of soil moisture and river flows over France for the spring season, *Hydrol. Earth Syst. Sci.*, 16(1), 201–216, doi:https://doi.org/10.5194/hess-16-201-2012, 2012.
- 540 Strömqvist, J., Arheimer, B., Dahné, J., Donnelly, C. and Lindström, G.: Water and nutrient predictions in ungauged basins: set-up and evaluation of a model at the national scale, *Hydrol. Sci. J.*, 57(2), 229–247, doi:10.1080/02626667.2011.637497, 2012.
- Sun, L., Seidou, O., Nistor, I. and Liu, K.: Review of the Kalman-type hydrological data assimilation, *Hydrol. Sci. J.*, 61(13), 2348–2366, doi:10.1080/02626667.2015.1127376, 2016.
- 545 Sutanto, S. J., Van Lanen, H. A. J., Wetterhall, F. and Lloret, X.: Potential of Pan-European Seasonal Hydrometeorological Drought Forecasts Obtained from a Multihazard Early Warning System, *Bull. Am. Meteorol. Soc.*, 101(4), E368–E393, doi:10.1175/BAMS-D-18-0196.1, 2020.
- Trambauer, P., Werner, M., Winsemius, H. C., Maskey, S., Dutra, E. and Uhlenbrook, S.: Hydrological drought forecasting and skill assessment for the Limpopo River basin, southern Africa, *Hydrol. Earth Syst. Sci.*, 19(4), 1695–1711, doi:10.5194/hess-19-1695-2015, 2015.
- 550 Viglione, A., Parajka, J., Rogger, M., Salinas, J. L., Laaha, G., Sivapalan, M. and Blöschl, G.: Comparative assessment of predictions in ungauged basins – Part 3: Runoff signatures in Austria, *Hydrol. Earth Syst. Sci.*, 17(6), 2263–2279, doi:10.5194/hess-17-2263-2013, 2013.
- Wanders, N., Thober, S., Kumar, R., Pan, M., Sheffield, J., Samaniego, L. and Wood, E. F.: Development and Evaluation of a Pan-European Multimodel Seasonal Hydrological Forecasting System, *J. Hydrometeorol.*, 20(1), 99–115, doi:10.1175/JHM-D-18-0040.1, 2019.
- 555 Wang, E., Zhang, Y., Luo, J., Chiew, F. H. S. and Wang, Q. J.: Monthly and seasonal streamflow forecasts using rainfall-runoff modeling and historical weather data, *Water Resour. Res.*, 47(5), doi:10.1029/2010WR009922, 2011.
- Wood, A. W. and Lettenmaier, D. P.: A Test Bed for New Seasonal Hydrologic Forecasting Approaches in the Western United States, *Bull. Am. Meteorol. Soc.*, 87(12), 1699–1712, doi:10.1175/BAMS-87-12-1699, 2006.
- 560 Wood, A. W. and Schaake, J. C.: Correcting Errors in Streamflow Forecast Ensemble Mean and Spread, *J. Hydrometeorol.*, 9(1), 132–148, doi:10.1175/2007JHM862.1, 2008.
- Yadav, M., Wagener, T. and Gupta, H.: Regionalization of constraints on expected watershed response behavior for improved predictions in ungauged basins, *Adv. Water Resour.*, 30(8), 1756–1774, doi:10.1016/j.advwatres.2007.01.005, 2007.
- 565 Yossef, N. C., Winsemius, H., Weerts, A., Beek, R. van and Bierkens, M. F. P.: Skill of a global seasonal streamflow forecasting system, relative roles of initial conditions and meteorological forcing, *Water Resour. Res.*, 49(8), 4687–4699, doi:10.1002/wrcr.20350, 2013.
- 570 Zachrisson, G.: Svåra islossningar i Torneälven - Förslag till skadeförebyggande åtgärder, SMHI, Norrköping, Sweden., 1989.