



**HAL**  
open science

## A Nonsense Variant in CCDC65 Gene Causes Respiratory Failure Associated with Increased Lamb Mortality in French Lacaune Dairy Sheep

Maxime Ben Braiek, Carole C. Moreno, Charlotte Allain, Philippe Bardou, Arnaud Bordes, Frédéric Debat, Cord Drögemüller, Florence Plisson-Petit, David Portes, Julien Sarry, et al.

### ► To cite this version:

Maxime Ben Braiek, Carole C. Moreno, Charlotte Allain, Philippe Bardou, Arnaud Bordes, et al.. A Nonsense Variant in CCDC65 Gene Causes Respiratory Failure Associated with Increased Lamb Mortality in French Lacaune Dairy Sheep. *Genes*, 2022, 13 (1), pp.45. 10.3390/genes13010045 . hal-03525204

**HAL Id: hal-03525204**

**<https://hal.inrae.fr/hal-03525204>**

Submitted on 17 Jan 2022

**HAL** is a multi-disciplinary open access archive for the deposit and dissemination of scientific research documents, whether they are published or not. The documents may come from teaching and research institutions in France or abroad, or from public or private research centers.

L'archive ouverte pluridisciplinaire **HAL**, est destinée au dépôt et à la diffusion de documents scientifiques de niveau recherche, publiés ou non, émanant des établissements d'enseignement et de recherche français ou étrangers, des laboratoires publics ou privés.



Distributed under a Creative Commons Attribution 4.0 International License

## Article

# A Nonsense Variant in *CCDC65* Gene Causes Respiratory Failure Associated with Increased Lamb Mortality in French Lacaune Dairy Sheep

Maxime Ben Braiek <sup>1</sup>, Carole Moreno-Romieux <sup>1</sup>, Charlotte Allain <sup>2</sup>, Philippe Bardou <sup>3</sup>, Arnaud Bordes <sup>1</sup>, Frédéric Debat <sup>1</sup>, Cord Drögemüller <sup>4</sup> , Florence Plisson-Petit <sup>1</sup>, David Portes <sup>2</sup>, Julien Sarry <sup>1</sup>, Némuel Tadi <sup>1</sup>, Florent Woloszyn <sup>1</sup> and Stéphane Fabre <sup>1,\*</sup> 

- <sup>1</sup> GenPhySE, Université de Toulouse, Institut National de Recherche Pour L'agriculture, L'alimentation et L'environnement (INRAE), Ecole Nationale Vétérinaire de Toulouse (ENVT), 31326 Castanet-Tolosan, France; maxime.ben-braiek@inrae.fr (M.B.B.); carole.moreno-romieux@inrae.fr (C.M.-R.); arnaud.bordes@inrae.fr (A.B.); frederic.debat@inrae.fr (F.D.); florence.plisson-petit@inrae.fr (F.P.-P.); julien.sarry@inrae.fr (J.S.); nemuel.tadi@inrae.fr (N.T.); florent.woloszyn@inrae.fr (F.W.)
- <sup>2</sup> UE Domaine de La Fage, Institut National de Recherche Pour L'agriculture, L'alimentation et L'environnement (INRAE), 12250 Saint-Jean et Saint-Paul, France; charlotte.allain@inrae.fr (C.A.); david.portes@inrae.fr (D.P.)
- <sup>3</sup> Sigenae, Institut National de Recherche Pour L'agriculture, L'alimentation et L'environnement (INRAE), 31326 Castanet-Tolosan, France; philippe.bardou@inrae.fr
- <sup>4</sup> Institute of Genetics, Vetsuisse Faculty, University of Bern, 3012 Bern, Switzerland; cord.droegemueller@vetsuisse.unibe.ch
- \* Correspondence: stephane.fabre@inrae.fr



**Citation:** Ben Braiek, M.; Moreno-Romieux, C.; Allain, C.; Bardou, P.; Bordes, A.; Debat, F.; Drögemüller, C.; Plisson-Petit, F.; Portes, D.; Sarry, J.; et al. A Nonsense Variant in *CCDC65* Gene Causes Respiratory Failure Associated with Increased Lamb Mortality in French Lacaune Dairy Sheep. *Genes* **2022**, *13*, 45. <https://doi.org/10.3390/genes13010045>

Academic Editor:  
Beatriz Gutierrez-Gil

Received: 17 November 2021

Accepted: 20 December 2021

Published: 24 December 2021

**Publisher's Note:** MDPI stays neutral with regard to jurisdictional claims in published maps and institutional affiliations.



**Copyright:** © 2021 by the authors. Licensee MDPI, Basel, Switzerland. This article is an open access article distributed under the terms and conditions of the Creative Commons Attribution (CC BY) license (<https://creativecommons.org/licenses/by/4.0/>).

**Abstract:** We recently demonstrated that the Lacaune deficient homozygous haplotype 6 (LDHH6) potentially hosts a recessive perinatal lethal mutation in Lacaune dairy sheep mapped on OAR3. In the present study, we have analyzed the whole-genome sequences of two Lacaune ram heterozygous carriers of LDHH6. After variant calling and filtering against the variants of 86 non-carrier rams, we have identified a single nucleotide variant (SNV) in the two LDHH6 carriers whose variant allele induced a premature stop codon (p.Glu111\*) in the *Coiled-Coil Domain Containing 65* (*CCDC65*) gene. *CCDC65* is involved in the assembly of the nexin-dynein regulatory complex for the formation of microtubules in ciliated cells. In order to identify the phenotype in homozygous sheep, we generated at-risk matings ( $n = 17$ ) between rams and ewes heterozygous for the candidate variant in *CCDC65*. A total of 16 lambs were born alive with five genotyped as homozygous carriers. The homozygous lambs suffered from respiratory problems, and four of them died within the first month of life. At necropsy, we observed a broad hepatization of lung lobes possibly induced by infectious pneumonia. The management of this lethal recessive allele (frequency of 0.06) through reasoned mating in the Lacaune sheep selection schemes could reduce lamb mortality by 2%.

**Keywords:** homozygous haplotype deficiency; LDHH6; *CCDC65*; juvenile lethal mutation; genetic disorder; primary cilia dyskinesia (PCD); ciliopathy; development; sheep

## 1. Introduction

Health and animal welfare are major concerns in livestock populations with important economic repercussions. During the last few decades, mortality in the first month of life remains high around 15–20% in sheep and most of this mortality occurs within the first three days of postnatal life [1,2]. The risk factors for lamb mortality are mainly due to parameters depending on the mother (nutrition, mothering ability, health status, parturition conditions), the lamb itself (low birth weight, vigor, colostrum intake, congenital malformations) and/or their environment (extreme weather, predation, infectious diseases) [1,3].

Although adequate farm environment and management practices could favor lamb viability (reviewed in Dwyer et al. [1]), it would be possible to act on the genetic aspect of

lamb survival. However, the QTL approach for mapping genetic variants/loci affecting this trait is difficult due to low heritability ( $h^2 < 0.1$ ) and multifactorial nature of lamb survival or lamb birthweight (i.e., best proxy for lamb survival) [1,4–6]. Nevertheless, thanks to the use of high throughput genomic tools (single nucleotide polymorphism arrays, whole-genome sequences), the study of genetic disorders and analysis of associated data have successfully led the identification of many causal variants affecting the viability of young animals [7].

Nowadays, two main approaches are used to identify and characterize causal variants associated with genetic disorders. The first one is the homozygosity-mapping based on a case-control approach using only few biological samples from affected and non-affected animals [8–10]. In this pioneering use of homozygosity-mapping using large number of SNP array in cattle, Charlier et al. have identified three causal variants responsible for *congenital muscular dystony* types 1 [OMIA 001450-9913] and 2 [OMIA 001451-9913] in Belgian Blue cattle and *ichthyosis fetalis* [OMIA 002238-9913] in Italian Chianina cattle [8]. In sheep, this approach was used successfully for the first time in the *microphthalmia* [OMIA 000649-9940] in Texel [11]. Since the last few decades, this method is efficient to map genetic defects and their associated variants as shown by the growing number of discovered causal variants referenced in the OMIA: Online Mendelian Inheritance in Animal database (<https://www.omia.org/>; accessed 2 September 2021). As example, with this approach, several pathogenic variants were identified causing *junctional epidermolysis bullosa* in cattle [12,13] and sheep [14–16] and the affected animals died shortly after birth due to skin disorders (injuries on limb extremities, mucous membranes). However, when mutations affect viability of developing embryos during gestation, phenotype or biological samples are not available. Thus, these mutations are more efficiently detectable by a second approach using reverse genetic screens. This approach is based on the availability of large sets of SNP array genotyped animals provided by genomic selection for example [17,18]. Reverse screens identified haplotypes for which homozygous carrier animals are absent or significantly less observed when compared to the expected number based on haplotype frequency. In cattle, the original works of VanRaden et al. [17] and Fritz et al. [18] using reverse genetic screen followed by whole-genome sequence analyses have successfully identified candidate causal variants in linkage disequilibrium with haplotypes with significant partial or total deficit in homozygous animals. Going on with this approach, numerous embryonic lethal mutations were identified in Holstein and Jersey breeds altering *APAF1* [19], *SMC2* [20,21], *GART* [18], *TFB1M* [22], *SDE2* [23], *CENPU* [24] and *CWC15* [25] genes. Additionally, neonatal/juvenile lethal mutations associated with homozygous haplotype deficiency were also identified in Ayrshire and Braunvieh breeds affecting *UBE3B* [20] and *TUBD1* [26] genes.

Recently, with the implementation of genomic selection in small ruminants [27] and the availability of large genotyping datasets, we have identified homozygous deficient haplotypes segregating in the Lacaune dairy sheep population by a reverse genetic screen method [28]. We have identified 11 haplotypes with significant deficit in homozygous animals, ranging from 79 to 100%. Some of them were associated with fertility loss at artificial insemination, and/or with increased stillbirth rate. We therefore assumed that these haplotypes are likely to host recessive mutations causing embryonic/fetal or perinatal lethality, respectively. Among these haplotypes, LDHH6 (Lacaune deficient homozygous haplotype 6) [OMIA 002342-9940] was the most frequent (12.1% of heterozygous carriers, located on OAR3:146.2–147.9 Mb on Oar\_rambouillet\_v1.0) and presented a homozygous deficit of 96% (three homozygous animals were observed, whereas 72 animals were expected;  $p = 3.5 \times 10^{-27}$ ). LDHH6 showed an increased stillbirth rate in at-risk matings between carrier rams and daughters of carrier rams when compared to safe matings. We have previously reported several candidate genes in the LDHH6 region (*WNT1*, *CCDC65* and *PFKM* genes), but the underlying causative variant is still unknown [28].

In the present study, we have taken advantage of whole-genome sequence data to identify the causal variant associated with the LDHH6 haplotype, studied the segregation

of the variant in several sheep breeds and validated the lethal effect of the proposed causal variant by generating at-risk matings.

## 2. Materials and Methods

### 2.1. Sequencing Data

For variant calling, publicly available data of 88 ovine short read Illumina HiSeq whole genome sequences (WGS) from 14 breeds generated in various INRAE and Teagasc research projects were used. Among them, 24 WGS were obtained from dairy Lacaune sheep, and also genotyped with the OvineSNP50 Beadchip from Illumina in the framework of Lacaune dairy sheep genomic selection program [27]. A description of the different breeds and all the accession numbers of sequencing raw data are available in Supplementary Table S1.

### 2.2. WGS Variant Calling and Annotation

Reads mapping and variants calling were performed using Nextflow v20.10.0 and Sarek pipeline v2.6.1 [29]. Genome Analysis Toolkit (GATK) best practices were followed as implemented in the Sarek pipeline. In this project, the following steps were performed: aligning the reads with BWA v0.7.17-r1188 [30] against the ovine genome assembly Oar\_rambouillet\_v1.0 (GCF\_002742125.1), marking duplicate reads (MarkDuplicates), base quality recalibration (BQSR) and calling germline small variants (HaplotypeCaller in GVCF mode) with GATK v4.1.7.0 [31], annotation of small variants with SnpEff v4.3t [32] and quality control with MultiQC v1.8 [33].

### 2.3. Identification of Candidate Causal Variants

Based on OvineSNP50 Beadchip genotyping, two Lacaune animals were detected as LDHH6 heterozygous carriers (others as non-carriers) among the 24 sequenced Lacaune genomes [28]. All SNPs, small insertion and deletion variants located within the LDHH6 region extended by 1 Mb from each side were extracted from OAR3 (Oar\_rambouillet\_v1.0; NC\_040254.1:145,243,481-148,946,399pb) using SnpSift Filter [32]. The selection filter of candidate polymorphisms was as follows: (i) variant allele compared to the Rambouillet reference genome; (ii) in the heterozygote state in the 2 heterozygous LDHH6-carriers Lacaune sheep; and (iii) in the reference homozygous state in all LDHH6-non carriers Lacaune sheep and in other non-related breeds. These variants were checked manually using the Integrative Genomics Viewer (IGV) [34] to confirm the bioinformatics variant calling prior to further investigation.

### 2.4. Biological Samples and CCDC65-Specific Genotyping Assay

Blood samples (3 ml) were collected by jugular vein puncture with the Venoject system containing EDTA (Terumo, Tokyo, Japan) and directly stored at 4 °C or −20 °C depending on further use. Ear samples were obtained with a tissue sampling unit (TSU, Allflex Europe, Vitré, France) taking an ear punch (1 mm<sup>3</sup>) directly placed in the TSU storage buffer at 4 °C. Ear biopsies were placed twice consecutively in 180 µL of 50 mM NaOH, heated 10 min at 95 °C, neutralized with 20 µL of 1 M HCl, and then vortexed during 10 s. Part of the blood samples was used for extraction of genomic DNA as described in Bodin et al. [35]. All other samples were used for direct genotyping without DNA purification on whole blood or on neutralized NaOH treatment solution of ear biopsies [36].

Among the candidate polymorphisms within the LDHH6 region, the potential CCDC65 causal variant (Oar\_rambouillet\_v1.0, NC\_040254.1:g.147,207,999C > A; XM\_004006389.4:c.521G > T) was genotyped either by RFLP or PACE (PCR allele competitive extension) analysis. RFLP was resolved on 2% agarose gel using BsaJI restriction enzyme (New England Biolabs, Ipswich, MA, USA) after either a first step of Terra PCR Direct Polymerase Mix amplification (Takara Bio, Kusatsu, Japan) using 1 µL of total blood (or 5 µL ear biopsy solution), or a PCR using GoTaq Flexi DNA Polymerase (Promega, Madison, WI, USA) with 50 ng of purified DNA. The following amplification primers (forward 5'-GAGCTGCGTGTGTAAGATGA-3' and reverse 5'-CCTCCAGCTCCATGTTGTAA-



3') were designed using Primer3Plus software [37]. PCR for RFLP was performed on an ABI2720 thermocycler (Applied Biosystems, Waltham, MA, USA) with the following conditions: 5 min at 94 °C, 35 cycles of 30 s at 94 °C, 30 s at 58 °C and 30 s at 72 °C, followed by 5 min final extension at 72 °C. Fluorescent PACE analysis was done with 15 ng of purified DNA using the PACE-IR 2x Genotyping Master mix (3CR Bioscience) in the presence of 12 µM of a mix of extended allele specific forward primers (5'-GAAGGTGACCAAGTTCATGCTGGACCTGTCAGAAGCCGAGG-3' and 5'-GAAGGTGACCAAGTTCATGCTGGACCTGTCAGAAGCCGAGT-3') and 30 µM of common reverse primer (5'-AGGGCGTGGGCGTGTGCTGCT-3') in a final volume of 10 µL. The touch-down PCR amplification condition was 15 min at 94 °C for the hot-start activation, 10 cycles of 20 s at 94 °C, 54–62 °C for 60 s (dropping 0.8 °C per cycle), then 36 cycles of 20 s at 94 °C and 60 s at 54 °C performed on an ABI9700 thermocycler followed by a final point read of the fluorescence on an ABI QuantStudio 6 real-time PCR system and using the QuantStudio software 1.3 (Applied Biosystems). The accuracy of the genotyping was validated by Sanger sequencing on few samples.

The presence of the *CCDC65* variant was checked in a DNA set of the 2021 cohort of 2952 Lacaune male lamb candidates for genomic selection. DNA was extracted by Labogena (<http://www.labogena.fr>, accessed on 2 September 2021) for low-density SNP chip genotyping (SheepLD v.3, on behalf the dairy Lacaune breed industry) and LDHH6 status was established as previously described [28]. A DNA diversity panel of 872 animals from 25 French sheep breeds [38] and 8 Swiss sheep breeds [39] was also specifically genotyped for the *CCDC65* variant.

### 2.5. Generation of Homozygous Lambs

Dairy Lacaune ewes ( $n = 245$ ) from two INRAE experimental flocks (Langlade and La Fage, agreement numbers: D3142901 and A312031, respectively) were genotyped for the *CCDC65* variant. Heterozygous ewes ( $n = 17$ ) were artificially inseminated (AI) with fresh semen from heterozygous carrier rams ( $n = 3$ ) selected among the genotyped animals for genomic selection with a known status at the LDHH6 haplotype [28] and further genotyped as heterozygous at the *CCDC65* locus. An ultrasound diagnosis of gestation was realized between 45 and 60 days after AI. Lambs were weighted at birth and 15 days after birth. Ear biopsies from newborn lambs (TSU Allflex) were collected for *CCDC65* genotyping at the same time of the mandatory electronic ear tag identification.

### 2.6. Ethics Statement

All experimental procedures were approved (approval numbers 01171.02 and 752056.00) by the French Ministry of Teaching and Scientific Research and local ethical committee C2EA-115 (Science and Animal Health) in accordance with the European Union Directive 2010/63/EU on the protection of animals used for scientific purposes.

## 3. Results

### 3.1. Screening of WGS Data Identifies a Nonsense Variant in *CCDC65* Gene Associated with LDHH6

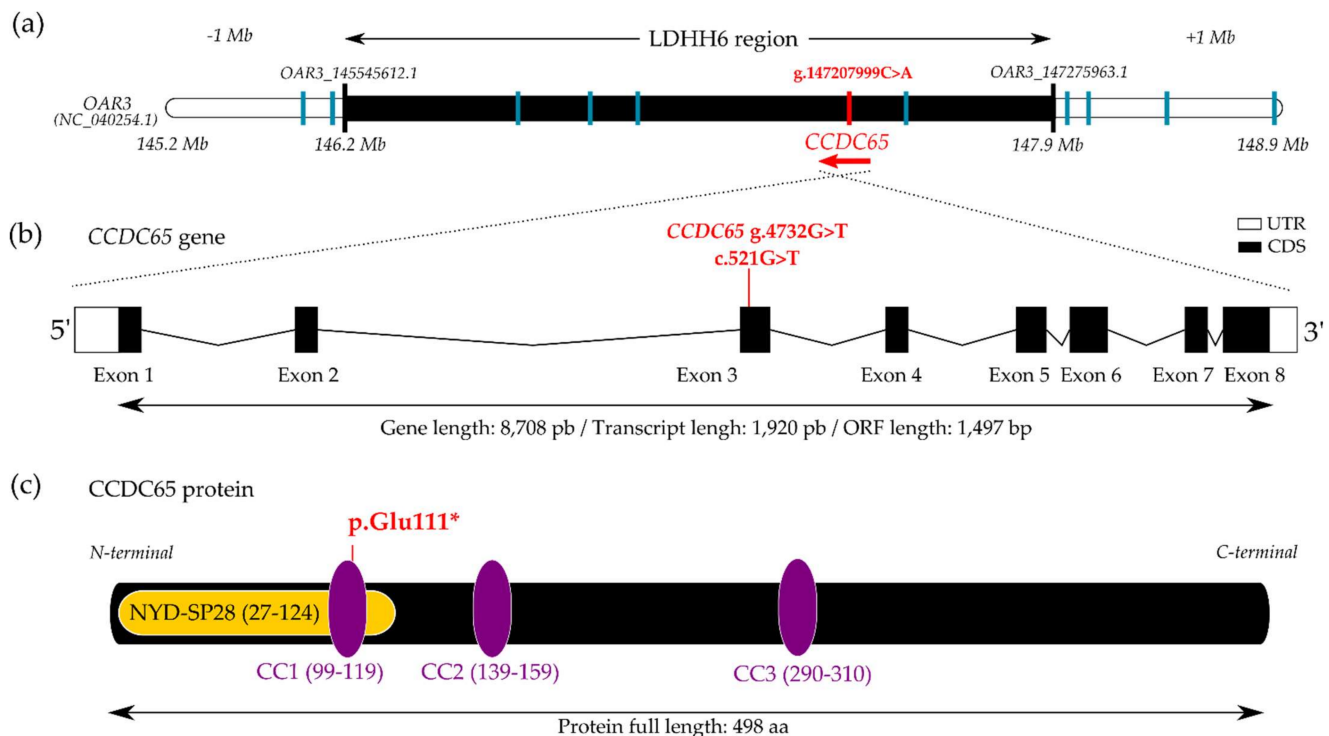
To identify the putative causal variant hosted by the LDHH6 haplotype, we considered biallelic polymorphisms (SNPs and InDels) proven from 88 ovine WGS containing 24 Lacaune sequences and, among them, two LDHH6 heterozygous carriers. Variant search analysis and annotations were deliberately limited to the LDHH6 region (OAR3: 146,243,481–147,946,399 pb) extended by 1 Mb from each side. In this 3.7 Mb region, we detected 53,632 polymorphisms with a quality score > 30. After filtering, we identified 11 SNPs only present in a heterozygous state in the genome of the two LDHH6 heterozygous carriers (Table 1).

**Table 1.** Candidate SNPs, locations and functional annotations.

Position	Ref/Alt	Quality Score	Location Annotation	Functional Consequence <sup>a</sup>
145,928,967	C/G	347.3	Intergenic, downstream of <i>FAM186A</i>	Modifier
146,173,708	G/A	396.0	Intergenic, upstream of <i>ASIC1</i>	Modifier
146,566,556	C/T	133.1	Intronic, <i>FAM186B</i>	Modifier
146,718,479	G/A	272.7	Intronic, <i>SPATS2</i>	Modifier
146,809,812	T/C	604.4	Intronic, <i>DNAJC22</i>	Modifier
147,207,999	C/A	506.7	Exonic, <i>CCDC65</i> (c.521G > T)	High, stop-gain (p.Glu111*)
147,345,297	G/A	192.3	Intergenic, upstream of <i>TEX49</i>	Modifier
148,189,184	A/G	596.7	Intergenic	Modifier
148,212,194	A/C	181.7	Intergenic	Modifier
148,417,713	A/G	545.8	Intergenic, downstream of <i>ZNF641</i>	Modifier
148,904,267	G/A	439.1	Intronic, <i>HDAC7</i>	Modifier

<sup>a</sup> variant annotation and effect predicted by SnpEff [32].

Among those SNPs, only one was predicted to highly alter gene function. This SNV (NC\_040254.1:g.147,207,999C > A; XM\_004006389.4:c.521G > T) leads to a nonsense variant located in exon 3 of the *Coiled-Coil Domain Containing 65* (*CCDC65*) gene (Figure 1a,b). The variant should result in a premature stop codon and a truncated protein in position 111 (XP\_004006438.1:p.Glu111\*) while the entire translated *CCDC65* protein is composed of 498 amino acids (Figure 1c). The variant localizes in the first Coiled-Coil (CC) domain in a highly conserved region of the protein between mammal species and even in algae (*Chlamydomonas reinhardtii*) where the role of *CCDC65* was originally studied [40–43] (Supplementary Figure S1). The resulting truncated protein has kept the major part of the NYD-SP28 domain shared with *CCDC164* also part of the N-DRC [44] but has lost two CC domains known to be implicated in protein–protein interaction [42,43].



**Figure 1.** Nonsense variant in *CCDC65* gene associated with the LDHH6 lethal haplotype. (a) LDHH6 haplotype (NC\_040254.1:OAR3:146,243,481pb–147,946,399pb) extended by 1 Mb from each side. The black bar indicates the limits of LDHH6 haplotype with the first and last markers (Illumina OvineSNP50 OAR3\_145545612.1 and OAR3\_147275963.1). Vertical lines indicate the positions of the candidate causal SNV in *CCDC65* (red) and 10 other SNVs fully associated with LDHH6 (blue);

(b) *CCDC65* gene structure and localization of the g.4732G > T (GeneID:101104220)/c.521G > T (XM\_004006389.4) variant in the third exon (UTR: untranslated region, CDS: coding sequence); (c) schematic representation of *CCDC65* protein (XP\_004006438.1) with one N-terminal 'NYD-SP28' (Pfam PF14772) and three coiled-coil (CC) domains (UniProtKB-W5QCQ9), and position of the premature C-terminal residue, pGlu111.

### 3.2. Variant Association with *LDHH6* and Population Estimation of Allele Frequency

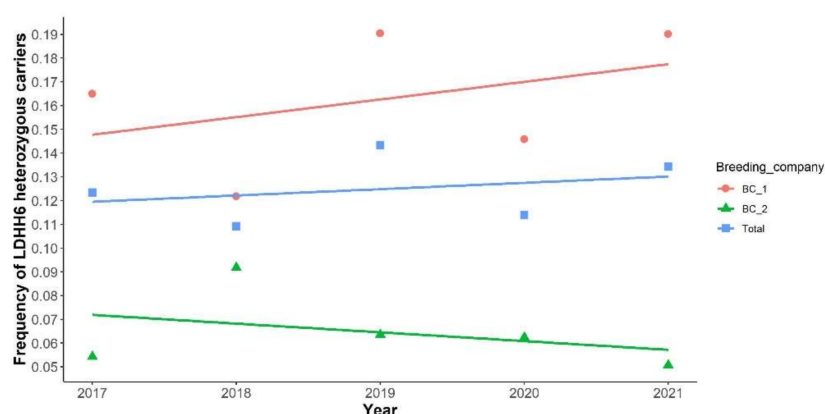
In order to provide additional evidence in favor of the *CCDC65* polymorphism as the causal variant, we have genotyped the c.521G > T SNP in a cohort of 2952 Lacaune lambs with known status at the *LDHH6* locus (Supplementary Figure S2). The contingency table indicated a clear association between the *LDHH6* status and the nonsense variant in *CCDC65* (Table 2, Fischer's exact test  $p < 0.0001$ , without the homozygous carrier individual). Based on this genotyping, the c.521T variant allele frequency was calculated at 7%, and, as expected, the distribution of genotypes was not consistent with the Hardy–Weinberg equilibrium (Chi-square test,  $p < 0.001$ ).

**Table 2.** Contingency table between *LDHH6* status and genotype at c.521G > T in *CCDC65*.

Genotype	+/+	LDHH6/+	LDHH6/LDHH6	Total
G/G	2540	3	0	2543
G/T	9	399	0	408
T/T	0	0	1	1
Total	2549	402	1	2952

+/+: non-carriers; LDHH6/+ : heterozygous carriers and LDHH6/LDHH6: homozygous carriers.

Since 2017, all Lacaune male lamb candidates for genomic selection were genotyped on low-density sheep (SheepLD chip) between one and five months of age, with a good representation of the genetic diversity in the selection schemes. In the Lacaune dairy breed, the population consists of two subpopulations with separate selection schemes conducted by two breeding companies. Overall, *LDHH6* heterozygous carrier frequency observed is stable in the population between 2017 and 2021. Nevertheless, the frequency of carriers was two-fold higher for breeding company 1 compared to breeding company 2 (Figure 2).

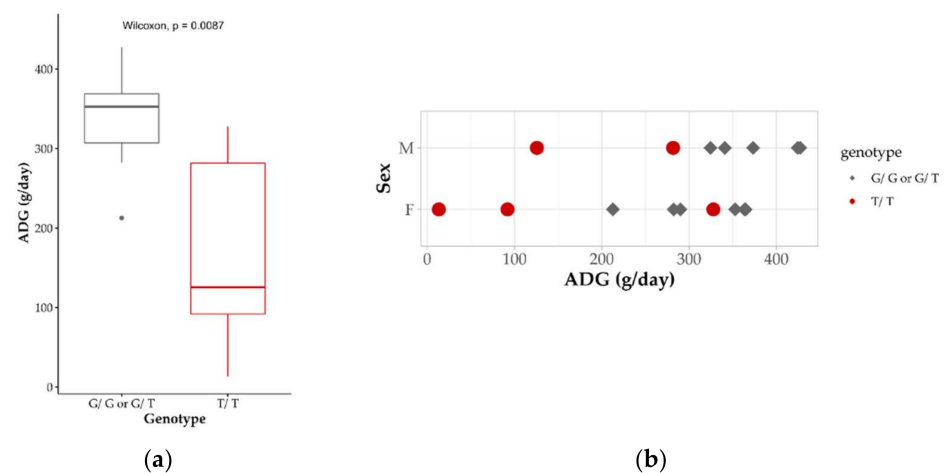


**Figure 2.** Evolution of *LDHH6* heterozygous carrier frequency between 2017 and 2021 in dairy Lacaune male lambs. The frequency is indicated either for all candidates to genomic selection (Total) or depending on the breeding company (BC\_1 or 2).

### 3.3. Generation of At-Risk Matings to Obtain Homozygote Lambs

The genotyping of the *CCDC65* variant in two experimental flocks of dairy Lacaune ewes ( $n = 245$ ) enabled us to identify 17 heterozygous carriers. These ewes were inseminated with fresh semen from heterozygous carrier rams to generate at-risk matings. Forty-five days after AI, 11 ewes were diagnosed as pregnant by ultrasonography. This corresponded to an AI success of 65%, in line with the average AI success of 69% recorded in the whole

dairy Lacaune population [28]. Gestation length was recorded as normal ( $146 \pm 2$  days), and no abortion or stillborn was observed. At the end of gestation, 16 lambs were born with 7 males and 9 females. For each lamb, an ear punch was collected for genotyping of the c.521G > T *CCDC65* variant. Five lambs were genotyped homozygous non-carriers, 6 were heterozygous and 5 were homozygous carriers, consistent with the Hardy–Weinberg equilibrium (Chi-square test,  $p = 0.317$ ). All lambs were weighted at birth (males:  $4.9 \pm 1.0$  kg, females:  $3.9 \pm 0.6$  kg), and no significant difference of birthweight was observed between genotypes. A second weighing was carried out at day 15 and average daily gain (ADG) was calculated on the 0–15 day period. Based on Wilcoxon’s non-parametric test, the homozygous carrier (T/T) showed a significant lower ADG compared to the other lambs (G/G or G/T) (Figure 3).

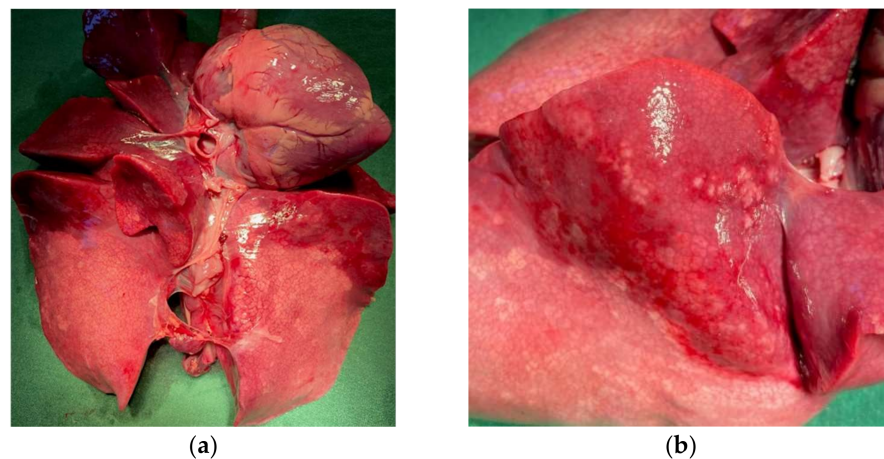


**Figure 3.** *CCDC65* genotype effect on average daily gain during the 0–15 day period. Mean ADG (g/day) according to *CCDC65* c.521G > T genotype (a) and ADG distribution by sex (M: male; F: female) and genotype (b).

Clinical examination revealed respiratory problems, such as tachypnea and a runny nose for 4 over 5 T/T lambs from the first days of life. Despite an appropriate veterinary treatment for suspected pulmonary infectious diseases (based on glucocorticoids and antibiotics administration), the recurrent respiratory distress resulted in the declining of general body condition (as attested by the lower ADG) leading to the natural death or euthanasia of the affected lambs between 15 and 25 days after birth. Only one T/T female lamb with the highest ADG (327.8 g/day during the 0–15 day period) has exceeded the weaning age with light respiratory syndrome and was sold to a sheep fattener.

Additionally, the previous analysis of the genomic selection cohort has allowed to identify a homozygous animal for the *CCDC65* variant (Table 2). This male lamb was present in a breeding center, and we obtained the information that he received an adapted veterinary treatment several times due to respiratory problems. The lamb finally died at the age of five and a half months. Overall, these observations have confirmed the hypothesis of a deleterious recessive *CCDC65* variant almost perfectly associated with LDHH6.

An autopsy was performed on the four deceased T/T lambs. A broad hepatization of lungs probably linked to an infectious pneumonia was particularly observed (Figure 4).



**Figure 4.** *CCDC65* homozygous affected lamb with lung lesions. (a) heart-pulmonary system of an affected homozygous lamb; (b) magnification of hepatized lobes.

### 3.4. Occurrence of the *CCDC65* Variant in Further Populations

An ovine DNA diversity panel of 25 French and eight Swiss sheep breeds representing 872 animals was checked for the segregation of the c.521G > T variant in *CCDC65* (Table 3). Initially shown in the French Lacaune dairy sheep, *CCDC65* genotyping has also revealed its occurrence in the French Lacaune meat strain and in a Lacaune dairy population reared in Switzerland. Moreover, two heterozygous animals were shown in the Blanche du Massif Central (BMC) breed. All the other tested French and Swiss breeds were non-carriers of the T allele.

**Table 3.** *CCDC65* c.521G > T genotype distribution from a DNA diversity panel of French (FR) and Swiss (CH) ovine breeds.

Breed	Total	Genotype		Breed	Total	Genotype	
		G/G	G/T			G/G	G/T
Berrichon du Cher (FR)	30	30		Mouton Vendéen (FR)	30	30	
Blanche du Massif Central (FR)	31	29	2	Noir du Velay (FR)	28	28	
Causse du Lot (FR)	32	32		Préalpes du sud (FR)	27	27	
Charmoise (FR)	31	31		Rava (FR)	29	29	
Charollais (FR)	30	30		Romane (FR)	30	30	
Corse (FR)	30	30		Romanov (FR)	26	26	
East Friesian (CH)	18	18		Rouge de l'Ouest (FR)	30	30	
Engadine Red (CH)	3	3		Roussin (FR)	30	30	
Ile de France (FR)	28	28		Saaser Mutte (CH)	10	10	
Lacaune (meat) (FR)	45	43	2	Suffolk (FR)	29	29	
Lacaune (milk) (FR)	40	37	3	Swiss Mirror (CH)	11	11	
Lacaune (milk) (CH)	37	27	10	Swiss White Alpine (CH)	14	14	
Limousine (FR)	30	30		Tarasconnaise (FR)	33	33	
Manech tête rousse (FR)	29	29		Texel (FR)	27	27	
Martinik (FR)	23	23		Valais Blacknose (CH)	14	14	
Merinos d'Arles (FR)	27	27		Valais Red (CH)	13	13	
Mourerous (FR)	27	27					
				Total	872	855	17

## 4. Discussion

We have previously reported that LDHH6 [OMIA 002342-9940] was the most significant haplotype in deficit of homozygous animals in French Lacaune dairy sheep. Analyses based on at-risk matings between LDHH6 heterozygous carriers have shown an increase in stillbirth rate, suggesting that this haplotype harbored a harmful recessive mutation [28]. Using sheep whole-genome sequences, the present study identified a causal variant as



the g.147,207,999C > A substitution on ovine chromosome 3 linked to the LDHH6 haplotype, and this SNV corresponds to the c.521G > T nonsense variation in the *CCDC65* gene introducing a premature stop codon (p.Glu111\*).

In the LDHH6 region, we have previously highlighted three candidate genes, *WNT1*, *CCDC65*, and *PFKM*, whose knock-out models in mice fitted well with perinatal, neonatal or preweaning lethality [28]. Interestingly, variant analysis from the whole genome sequence of LDHH6 heterozygous carriers has revealed candidate variants in ovine *CCDC65*, but not in *WNT1* or *PFKM* or in close vicinity of these two genes. Moreover, among all candidate polymorphisms, the SNP detected in the exon 3 of *CCDC65* was the most obvious candidate since it was the only one predicted to strongly alter the protein function by creating a premature stop codon allowing to synthesize only the first N-terminal quarter of the protein.

In humans, pathogenic variants in *CCDC65* cause Primary Cilia Dyskinesia (PCD), a genetic disorder with autosomal recessive inheritance (CILD27, OMIM#615504). The protein is involved in the assembly of the axonemal nexin-dynein regulatory complex [45]. Axoneme is the axial motor part of cilia composed of nine doublets of microtubules located in the periphery and one central pair complex [40]. Each outer doublet is composed of two tubules (A and B) and is associated with several complexes: outer and inner dynein arms (ODAs and IDs), Nexin-Dynein Regulatory Complex (N-DRC) and Radial Spoke (RS) [40–43,46]. In particular, the N-DRC is important for the sliding between adjacent outer doublet microtubules to allow cilia motility. The complex is composed of at least 11 subunits shown in *C. reinhardtii* and conserved among mammals [40–43]. Among them, variants in one of the three genes: *CCDC164* (OMIM #615294 [47]), *CCDC65* (OMIM #615504 [44,48]) or *GAS8* (OMIM #616726 [49]) have been reported to cause PCD. Bower et al. have demonstrated that the absence of *CCDC65* subunit destabilized the association with *CCDC164* and *GAS8* [45]. Indeed, *CCDC65* forms a base plate for N-DRC. Alteration in N-DRC have big consequences for cilia beating leading to the respiratory problems. These three subunits are important for cilia and flagella motility and mucus clearance to eject pathogenic organisms from respiratory tracts. In human, loss-of-function mutations in *CCDC65* genes in PCD patients have been identified and are associated with recurrent infectious diseases of the ENT (ear nose throat) sphere as bronchitis, sinusitis, and/or otitis [44,48]. The above clinical profiles are well in line with our observations made in lambs homozygous for the c.521G > T variant in *CCDC65*. Homozygous lambs have recurrent neonatal respiratory problems. At the autopsy, we particularly observed a broad hepatization of lung lobes resembling infectious pneumonia also associated with growth delay [50]. We hypothesize that, due to the loss of Coiled-Coil domains, the truncated *CCDC65* leads to the destabilization of the N-DRC, abnormal cilia beating and impairs the mucociliary clearance resulting in airways obstruction by mucus loaded with pathogens (bacteria, mycoplasma, virus). Pathogens load could depend on the breeding sanitary conditions, individual immunity and veterinary treatment applied, which can explain that the lethality can occur between perinatal and juvenile stages. This is to be connected to the previous observation of a partial homozygous deficit for LDHH6 at the age of genotyping (72 expected and 3 observed) [28]. Indeed, Lacaune candidate rams for genomic selection are genotyped on average at 3 months of age using LD SNP chip indicating that some LDHH6/*CCDC65* homozygous lambs have exceeded this age as observed for a female born from our at-risk mating, and a male in a breeding center exceeding 5 months of age.

Interestingly, a respiratory syndrome is also reported in cattle for the homozygous deficient Braunvieh haplotype 2 (BH2) [OMIA 001939-9913] associated with perinatal and juvenile mortality due to the missense variant (p.His210Arg) in *TUBD1* (*tubulin delta 1*) that also disorganizes the microtubules in airway cilia [26]. Additionally, a stop-gain variant in *CCDC39* (p.Arg96\*) [OMIA 001540-9615], also essential for the assembly of inner dynein arms [51,52], was found in Bobtail dogs associated with PCD suffering from chronic airway diseases [51].

Based on the sheep gene atlas (<http://biogps.org/sheepatlas/>; accessed 2 September 2021), *CCDC65* is highly expressed in tissues and organs hosting ciliated or flagellated cells

as lungs, fallopian tube and testis [53]. The high expression in testis raises the question on the impact of the *CCDC65* variant on sperm motility, knowing that the first characterization of the protein was made in human sperm tail [54] and several mutations causing PCD lead to sperm defects [55]. The three homozygous male lambs we had access to died before puberty, preventing us from getting the semen. We then evaluated the impact of the mutation at the heterozygous state based on semen quality records from artificial insemination center. Semen quality is controlled for each ejaculate according to volume, concentration and sperm motility [56]. However, no significant effect of the mutation was demonstrated for the parameters recorded (Supplementary Table S2).

By genotyping the complete 2021 cohort of candidate lambs for genomic selection, we have validated an almost perfect association between LDHH6 status and alleles at the *CCDC65* variant (Table 2). Only 12 among 2952 animals do not match with the expectations (described in Supplementary Figure S3). Indeed, nine LDHH6 non-carriers were heterozygous carriers for the variant allele. Specific focus on the haplotypes of these animals have revealed shorter recombinant versions of the LDHH6 haplotypes (between 4 and 26 markers out of 27 markers composing the LDHH6 haplotype). We also identify three LDHH6 heterozygous carriers which do not carry the *CCDC65* variant. This discrepancy could be attributed to errors from SNP array genotyping, phasing and/or imputation.

Diversity analysis revealed the segregation of the *CCDC65* c.521G > T variant not only in the Lacaune dairy population but also in the Lacaune meat and Blanche du Massif Central (BMC) populations. Additionally, we found the *CCDC65* variant in the Ensembl variant database (rs1085624756) compiling the whole genome sequences from the International Sheep Genome Consortium (448 animals from 58 breeds all over the world). The rs1085624756 variant is only present in a Lacaune dairy animal (LRLACU000000000084). The Lacaune sheep population has a complex history with the creation of two lines, one for meat and one for dairy purposes, with four independent selection schemes depending on two breeding companies. Intriguingly, the LDHH6 carrier frequency is 2.5 fold higher in one breeding company compared to the other one (0.16 vs. 0.06). In livestock, deleterious alleles could be associated with better performances when heterozygous to explain their maintaining in the populations [7,57,58]. However, no heterozygous advantage has been identified on milk selected traits in the Lacaune population for LDHH6 heterozygous carriers [28], and the two breeding companies have similar selection objectives on milk traits. Thus, the difference observed in the *CCDC65* allele frequency between the two breeding companies could be explained by genetic drift and the use of very influential carriers. The segregation of the *CCDC65* variant in both dairy and meat strains of Lacaune sheep indicates that the mutation event predates the creation of the two lineages. Moreover, the variant is also segregating in the BMC breed. Population structure analyses revealed that Lacaune and BMC, both originating from the Massif Central in France, shared the same origin within the Southern European sheep populations that may explain the segregation of identical alleles in both populations [38]. Interestingly, these two breeds also share another important variant in the *BMP15* gene controlling prolificacy [36]. The presence of the variant in Swiss Lacaune could be explained by imports of French Lacaune reproducers. However, with the number of carriers detected in our analysis (10 over 37), it is important to check the mutation frequency in the overall Swiss Lacaune population because the risk of generating homozygous lambs is quite high.

## 5. Conclusions

This is the first report of the identification of a recessive lethal variant in sheep through a reverse genetic screen method using highthroughput genotyping completed by whole genome sequencing of few informative animals. The present study identifies a causal recessive nonsense variant in *CCDC65* gene linked to the homozygous deficient haplotype named LDHH6 and associated with rearing loss in Lacaune dairy sheep. The loss-of-function mutation in *CCDC65* is likely to cause a *primary cilia dyskinesia* syndrome similar to *CCDC65*-related ciliopathies in humans. Homozygous affected lambs suffer from res-

piratory defects predisposing infectious pneumonia with a fatal ending at a young age. Based on the LDHH6/CCDC65 allele frequency of around 0.06 and a mortality lamb rate at 15% (recorded on 804,577 matings, described in [28]), we estimate that 1/50 (2%) of dead lambs is homozygous for the CCDC65 variant. Consequently, management of this causal variant in the Lacaune sheep selection schemes through reasoned mating of carrier rams and ewes is important to improve health, welfare and overall lamb viability.

**Supplementary Materials:** The following are available online at <https://www.mdpi.com/article/10.3390/genes13010045/s1>, Table S1: Accession numbers of the 88 whole-genome sequences used in the analysis, Table S2. Semen parameters of dairy Lacaune rams from artificial insemination center, Figure S1. CCDC65 protein multiple sequence alignment, Figure S2. Representative genotyping results for c.521G > T variant in CCDC65, Figure S3. Haplotypes of the LDHH6 region for 12 animals showing mismatch with the CCDC65 SNV.

**Author Contributions:** Conceptualization, M.B.B., S.F. and C.M.-R.; methodology, M.B.B., S.F. and C.M.-R.; software, P.B.; formal analysis, M.B.B., S.F., C.M.-R. and P.B.; investigation, M.B.B., S.F., C.M.-R., A.B., F.D., F.P.-P., J.S., N.T., F.W., C.A., D.P. and C.D.; resources, M.B.B., S.F., C.M.-R., A.B., F.D., N.T., C.A., D.P., P.B. and C.D.; writing—original draft preparation, M.B.B.; writing—review and editing, S.F., C.M.-R., P.B. and C.D.; visualization, M.B.B. and S.F.; supervision, S.F. and C.M.-R.; funding acquisition, S.F. and C.M.-R. All authors have read and agreed to the published version of the manuscript.

**Funding:** This research has received funding from the European Union’s Horizon 2020 research and innovation program under the Grant Agreement No. 772787 (SMARTER) and PRESAGE project (CASDAR No. 20ART1532777, the responsibility of the French ministry of Agriculture and Food cannot be engaged). M.B.B. was supported by a Ph.D. grant for the HOMLET program co-funded by APIS-GENE and Région Occitanie.

**Institutional Review Board Statement:** Experimental animals were reared in two INRAE farms with agreement numbers D3142901 (Langlade) and A312031 (La Fage) delivered by the French Departmental Directorate of Population Protections 31. All experimental procedures on animals were approved (approval numbers 01171.02 and 752056.00) by the French Ministry of Teaching and Scientific Research and local ethical committee C2EA-115 (Science and Animal Health) in accordance with the European Union Directive 2010/63/EU on the protection of animals used for scientific purposes.

**Data Availability Statement:** The WGS data used in this study are publicly available, accession numbers are described in Table S1.

**Acknowledgments:** We are grateful to the genotoul bioinformatics platform Toulouse Occitanie (Bioinfo Genotoul, <https://doi.org/10.15454/1.5572369328961167E12>) for providing help and/or computing and/or storage resources. The authors thank the Lacaune breeding companies who provided access to private genomic data and biological samples.

**Conflicts of Interest:** C.D. is the guest editor of this special issue of *Genes (Genetics and Breeding of Small Ruminants)* but has not in any way been involved in or interacted with the journal’s review process or editorial decision-making. The authors declare no other conflict of interest.

## References

1. Dwyer, C.M.; Conington, J.; Corbiere, F.; Holmøy, I.H.; Muri, K.; Nowak, R.; Rooke, J.; Vipond, J.; Gautier, J.-M. Invited Review: Improving Neonatal Survival in Small Ruminants: Science into Practice. *Animal* **2016**, *10*, 449–459. [[CrossRef](#)] [[PubMed](#)]
2. Dwyer, C.M. Genetic and Physiological Determinants of Maternal Behavior and Lamb Survival: Implications for Low-Input Sheep Management. *J. Anim. Sci.* **2008**, *86*, E246–E258. [[CrossRef](#)] [[PubMed](#)]
3. Flinn, T.; Kleemann, D.O.; Swinbourne, A.M.; Kelly, J.M.; Weaver, A.C.; Walker, S.K.; Gatford, K.L.; Kind, K.L.; van Wettere, W.H.E.J. Neonatal Lamb Mortality: Major Risk Factors and the Potential Ameliorative Role of Melatonin. *J. Anim. Sci. Biotechnol.* **2020**, *11*, 107. [[CrossRef](#)]
4. Cloete, S.W.P.; Misztal, I.; Olivier, J.J. Genetic Parameters and Trends for Lamb Survival and Birth Weight in a Merino Flock Divergently Selected for Multiple Rearing Ability. *J. Anim. Sci.* **2009**, *87*, 2196–2208. [[CrossRef](#)] [[PubMed](#)]
5. Hatcher, S.; Atkins, K.D.; Safari, E. Lamb Survival in Australian Merino Sheep: A Genetic Analysis. *J. Anim. Sci.* **2010**, *88*, 3198–3205. [[CrossRef](#)]

6. Riggio, V.; Finocchiaro, R.; Bishop, S.C. Genetic Parameters for Early Lamb Survival and Growth in Scottish Blackface Sheep. *J. Anim. Sci.* **2008**, *86*, 1758–1764. [[CrossRef](#)] [[PubMed](#)]
7. Cole, J.B.; Null, D.J.; VanRaden, P.M. Phenotypic and Genetic Effects of Recessive Haplotypes on Yield, Longevity, and Fertility. *J. Dairy Sci.* **2016**, *99*, 7274–7288. [[CrossRef](#)]
8. Charlier, C.; Coppieters, W.; Rollin, F.; Desmecht, D.; Agerholm, J.S.; Cambisano, N.; Carta, E.; Dardano, S.; Dive, M.; Fasquelle, C.; et al. Highly Effective SNP-Based Association Mapping and Management of Recessive Defects in Livestock. *Nat. Genet.* **2008**, *40*, 449–454. [[CrossRef](#)] [[PubMed](#)]
9. Ytournal, F.; Gilbert, H.; Boichard, D. Comment affiner la localisation d'un QTL ? *INRAE Prod. Anim.* **2008**, *21*, 147–158. [[CrossRef](#)]
10. Georges, M.; Charlier, C.; Hayes, B. Harnessing Genomic Information for Livestock Improvement. *Nat. Rev. Genet.* **2019**, *20*, 135–156. [[CrossRef](#)]
11. Becker, D.; Tetens, J.; Brunner, A.; Bürstel, D.; Ganter, M.; Kijas, J.; Drögemüller, C. Microphthalmia in Texel Sheep Is Associated with a Missense Mutation in the Paired-Like Homeodomain 3 (PITX3) Gene. *PLoS ONE* **2010**, *5*, e8689. [[CrossRef](#)] [[PubMed](#)]
12. Michot, P.; Fantini, O.; Braque, R.; Allais-Bonnet, A.; Saintilan, R.; Grohs, C.; Barbieri, J.; Genestout, L.; Danchin-Burge, C.; Gourreau, J.-M.; et al. Whole-Genome Sequencing Identifies a Homozygous Deletion Encompassing Exons 17 to 23 of the Integrin Beta 4 Gene in a Charolais Calf with Junctional Epidermolysis Bullosa. *Genet. Sel. Evol.* **2015**, *47*, 37. [[CrossRef](#)] [[PubMed](#)]
13. Peters, M.; Reber, I.; Jagannathan, V.; Raddatz, B.; Wohlsein, P.; Drögemüller, C. DNA-Based Diagnosis of Rare Diseases in Veterinary Medicine: A 4.4 Kb Deletion of ITGB4 Is Associated with Epidermolysis Bullosa in Charolais Cattle. *BMC Vet. Res.* **2015**, *11*, 48. [[CrossRef](#)] [[PubMed](#)]
14. Fabre, S.; Chantepie, L.; Plisson-Petit, F.; Sarry, J.; Woloszyn, F.; Genet, C.; Drouilhet, L.; Tosser-Klopp, G. A Novel Homozygous Nonsense Mutation in ITGB4 Gene Causes Epidermolysis Bullosa in Mouton Vendéen Sheep. *Anim. Genet.* **2020**, *52*, 138–139. [[CrossRef](#)] [[PubMed](#)]
15. Suárez-Vega, A.; Gutiérrez-Gil, B.; Benavides, J.; Perez, V.; Tosser-Klopp, G.; Klopp, C.; Keennel, S.J.; Arranz, J.J. Combining GWAS and RNA-Seq Approaches for Detection of the Causal Mutation for Hereditary Junctional Epidermolysis Bullosa in Sheep. *PLoS ONE* **2015**, *10*, e0126416. [[CrossRef](#)]
16. Letko, A.; Dijkman, R.; Strugnell, B.; Häfliger, I.M.; Paris, J.M.; Henderson, K.; Geraghty, T.; Orr, H.; Scholes, S.; Drögemüller, C. Deleterious AGXT Missense Variant Associated with Type 1 Primary Hyperoxaluria (PH1) in Zwartbles Sheep. *Genes* **2020**, *11*, 1147. [[CrossRef](#)] [[PubMed](#)]
17. VanRaden, P.M.; Olson, K.M.; Null, D.J.; Hutchison, J.L. Harmful Recessive Effects on Fertility Detected by Absence of Homozygous Haplotypes. *J. Dairy Sci.* **2011**, *94*, 6153–6161. [[CrossRef](#)] [[PubMed](#)]
18. Fritz, S.; Capitan, A.; Djari, A.; Rodriguez, S.C.; Barbat, A.; Baur, A.; Grohs, C.; Weiss, B.; Boussaha, M.; Esquerré, D.; et al. Detection of Haplotypes Associated with Prenatal Death in Dairy Cattle and Identification of Deleterious Mutations in GART, SHBG and SLC37A2. *PLoS ONE* **2013**, *8*, e65550. [[CrossRef](#)]
19. Adams, H.A.; Sonstegard, T.S.; VanRaden, P.M.; Null, D.J.; Van Tassell, C.P.; Larkin, D.M.; Lewin, H.A. Identification of a Nonsense Mutation in APAF1 That Is Likely Causal for a Decrease in Reproductive Efficiency in Holstein Dairy Cattle. *J. Dairy Sci.* **2016**, *99*, 6693–6701. [[CrossRef](#)] [[PubMed](#)]
20. Daetwyler, H.D.; Capitan, A.; Pausch, H.; Stothard, P.; van Binsbergen, R.; Brøndum, R.F.; Liao, X.; Djari, A.; Rodriguez, S.C.; Grohs, C.; et al. Whole-Genome Sequencing of 234 Bulls Facilitates Mapping of Monogenic and Complex Traits in Cattle. *Nat. Genet.* **2014**, *46*, 858–865. [[CrossRef](#)]
21. McClure, M.C.; Bickhart, D.; Null, D.; VanRaden, P.; Xu, L.; Wiggans, G.; Liu, G.; Schroeder, S.; Glasscock, J.; Armstrong, J.; et al. Bovine Exome Sequence Analysis and Targeted SNP Genotyping of Recessive Fertility Defects BH1, HH2, and HH3 Reveal a Putative Causative Mutation in SMC2 for HH3. *PLoS ONE* **2014**, *9*, e92769. [[CrossRef](#)]
22. Schütz, E.; Wehrhahn, C.; Wanjek, M.; Bortfeld, R.; Wemheuer, W.E.; Beck, J.; Brenig, B. The Holstein Friesian Lethal Haplotype 5 (HH5) Results from a Complete Deletion of TBF1M and Cholesterol Deficiency (CDH) from an ERV-(LTR) Insertion into the Coding Region of APOB. *PLoS ONE* **2016**, *11*, e0154602. [[CrossRef](#)]
23. Fritz, S.; Hozé, C.; Rebours, E.; Barbat, A.; Bizard, M.; Chamberlain, A.; Escoufflaire, C.; Jagt, C.V.; Boussaha, M.; Grohs, C.; et al. An Initiator Codon Mutation in SDE2 Causes Recessive Embryonic Lethality in Holstein Cattle. *J. Dairy Sci.* **2018**, *101*, 6220–6231. [[CrossRef](#)]
24. Hozé, C.; Escoufflaire, C.; Mesbah-Uddin, M.; Barbat, A.; Boussaha, M.; Deloche, M.C.; Boichard, D.; Fritz, S.; Capitan, A. Short Communication: A Splice Site Mutation in CENPU Is Associated with Recessive Embryonic Lethality in Holstein Cattle. *J. Dairy Sci.* **2020**, *103*, 607–612. [[CrossRef](#)] [[PubMed](#)]
25. Sonstegard, T.S.; Cole, J.B.; VanRaden, P.M.; Van Tassell, C.P.; Null, D.J.; Schroeder, S.G.; Bickhart, D.; McClure, M.C. Identification of a Nonsense Mutation in CWC15 Associated with Decreased Reproductive Efficiency in Jersey Cattle. *PLoS ONE* **2013**, *8*, e54872. [[CrossRef](#)]
26. Schwarzenbacher, H.; Burgstaller, J.; Seefried, F.R.; Wurmser, C.; Hilbe, M.; Jung, S.; Fuerst, C.; Dinhopf, N.; Weissenböck, H.; Fuerst-Waltl, B.; et al. A Missense Mutation in TUBD1 Is Associated with High Juvenile Mortality in Braunvieh and Fleckvieh Cattle. *BMC Genom.* **2016**, *17*, 400. [[CrossRef](#)] [[PubMed](#)]
27. Astruc, J.-M.; Baloché, G.; Buisson, D.; Labatut, J.; Lagriffoul, G.; Larroque, H.; Robert-Granie, C.; Legarra, A.; Barillet, F. Genomic selection in French dairy sheep. *INRAE Prod. Anim.* **2016**, *29*, 41–55.



28. Ben Braiek, M.; Fabre, S.; Hozé, C.; Astruc, J.-M.; Moreno-Romieux, C. Identification of Homozygous Haplotypes Carrying Putative Recessive Lethal Mutations That Compromise Fertility Traits in French Lacaune Dairy Sheep. *Genet. Sel. Evol.* **2021**, *53*, 41. [[CrossRef](#)]
29. Garcia, M.; Juhos, S.; Larsson, M.; Olason, P.I.; Martin, M.; Eisfeldt, J.; DiLorenzo, S.; Sandgren, J.; Ståhl, T.D.D.; Ewels, P.; et al. Sarek: A Portable Workflow for Whole-Genome Sequencing Analysis of Germline and Somatic Variants. *F1000Research* **2020**, *9*, 63. [[CrossRef](#)]
30. Li, H.; Durbin, R. Fast and Accurate Long-Read Alignment with Burrows–Wheeler Transform. *Bioinformatics* **2010**, *26*, 589–595. [[CrossRef](#)]
31. McKenna, A.; Hanna, M.; Banks, E.; Sivachenko, A.; Cibulskis, K.; Kernysky, A.; Garimella, K.; Altshuler, D.; Gabriel, S.; Daly, M.; et al. The Genome Analysis Toolkit: A MapReduce Framework for Analyzing next-Generation DNA Sequencing Data. *Genome Res.* **2010**, *20*, 1297–1303. [[CrossRef](#)]
32. Cingolani, P.; Patel, V.M.; Coon, M.; Nguyen, T.; Land, S.J.; Ruden, D.M.; Lu, X. Using *Drosophila Melanogaster* as a Model for Genotoxic Chemical Mutational Studies with a New Program, SnpSift. *Front. Genet.* **2012**, *3*, 35. [[CrossRef](#)] [[PubMed](#)]
33. Ewels, P.; Magnusson, M.; Lundin, S.; Käller, M. MultiQC: Summarize Analysis Results for Multiple Tools and Samples in a Single Report. *Bioinformatics* **2016**, *32*, 3047–3048. [[CrossRef](#)] [[PubMed](#)]
34. Thorvaldsdóttir, H.; Robinson, J.T.; Mesirov, J.P. Integrative Genomics Viewer (IGV): High-Performance Genomics Data Visualization and Exploration. *Brief. Bioinform.* **2013**, *14*, 178–192. [[CrossRef](#)]
35. Bodin, L.; Di Pasquale, E.; Fabre, S.; Bontoux, M.; Monget, P.; Persani, L.; Mulsant, P. A Novel Mutation in the Bone Morphogenetic Protein 15 Gene Causing Defective Protein Secretion Is Associated with Both Increased Ovulation Rate and Sterility in Lacaune Sheep. *Endocrinology* **2007**, *148*, 393–400. [[CrossRef](#)] [[PubMed](#)]
36. Chantepie, L.; Bodin, L.; Sarry, J.; Woloszyn, F.; Plisson-Petit, F.; Ruesche, J.; Drouilhet, L.; Fabre, S. Genome-Wide Identification of a Regulatory Mutation in BMP15 Controlling Prolificacy in Sheep. *Front. Genet.* **2020**, *11*, 585. [[CrossRef](#)]
37. Untergasser, A.; Nijveen, H.; Rao, X.; Bisseling, T.; Geurts, R.; Leunissen, J.A.M. Primer3Plus, an Enhanced Web Interface to Primer3. *Nucleic Acids Res.* **2007**, *35*, W71–W74. [[CrossRef](#)]
38. Rochus, C.M.; Tortereau, F.; Plisson-Petit, F.; Restoux, G.; Moreno-Romieux, C.; Tossier-Klopp, G.; Servin, B. Revealing the Selection History of Adaptive Loci Using Genome-Wide Scans for Selection: An Example from Domestic Sheep. *BMC Genom.* **2018**, *19*, 71. [[CrossRef](#)]
39. Signer-Hasler, H.; Burren, A.; Ammann, P.; Drögemüller, C.; Flury, C. Runs of Homozygosity and Signatures of Selection: A Comparison among Eight Local Swiss Sheep Breeds. *Anim. Genet.* **2019**, *50*, 512–525. [[CrossRef](#)] [[PubMed](#)]
40. Heuser, T.; Raytchev, M.; Krell, J.; Porter, M.E.; Nicastro, D. The Dynein Regulatory Complex Is the Nexin Link and a Major Regulatory Node in Cilia and Flagella. *J. Cell Biol.* **2009**, *187*, 921–933. [[CrossRef](#)] [[PubMed](#)]
41. Gui, L.; Song, K.; Tritschler, D.; Bower, R.; Yan, S.; Dai, A.; Augspurger, K.; Sakizadeh, J.; Grzemska, M.; Ni, T.; et al. Scaffold Subunits Support Associated Subunit Assembly in the *Chlamydomonas* Ciliary Nexin–Dynein Regulatory Complex. *Proc. Natl. Acad. Sci. USA* **2019**, *116*, 23152–23162. [[CrossRef](#)]
42. Lin, J.; Tritschler, D.; Song, K.; Barber, C.F.; Cobb, J.S.; Porter, M.E.; Nicastro, D. Building Blocks of the Nexin–Dynein Regulatory Complex in *Chlamydomonas* Flagella. *J. Biol. Chem.* **2011**, *286*, 29175–29191. [[CrossRef](#)] [[PubMed](#)]
43. Bower, R.; Tritschler, D.; VanderWaal, K.; Perrone, C.A.; Mueller, J.; Fox, L.; Sale, W.S.; Porter, M.E. The N-DRC Forms a Conserved Biochemical Complex That Maintains Outer Doublet Alignment and Limits Microtubule Sliding in Motile Axonemes. *Mol. Biol. Cell* **2013**, *24*, 1134–1152. [[CrossRef](#)]
44. Austin-Tse, C.; Halbritter, J.; Zariwala, M.A.; Gilberti, R.M.; Gee, H.Y.; Hellman, N.; Pathak, N.; Liu, Y.; Panizzi, J.R.; Patel-King, R.S.; et al. Zebrafish Ciliopathy Screen Plus Human Mutational Analysis Identifies C21orf59 and CCDC65 Defects as Causing Primary Ciliary Dyskinesia. *Am. J. Hum. Genet.* **2013**, *93*, 672–686. [[CrossRef](#)] [[PubMed](#)]
45. Bower, R.; Tritschler, D.; Mills, K.V.; Heuser, T.; Nicastro, D.; Porter, M.E. DRC2/CCDC65 Is a Central Hub for Assembly of the Nexin–Dynein Regulatory Complex and Other Regulators of Ciliary and Flagellar Motility. *Mol. Biol. Cell* **2018**, *29*, 137–153. [[CrossRef](#)]
46. Morohoshi, A.; Miyata, H.; Shimada, K.; Nozawa, K.; Matsumura, T.; Yanase, R.; Shiba, K.; Inaba, K.; Ikawa, M. Nexin–Dynein Regulatory Complex Component DRC7 but Not FBXL13 Is Required for Sperm Flagellum Formation and Male Fertility in Mice. *PLoS Genet.* **2020**, *16*, e1008585. [[CrossRef](#)] [[PubMed](#)]
47. Wirschell, M.; Olbrich, H.; Werner, C.; Tritschler, D.; Bower, R.; Sale, W.S.; Loges, N.T.; Pennekamp, P.; Lindberg, S.; Stenram, U.; et al. The Nexin–Dynein Regulatory Complex Subunit DRC1 Is Essential for Motile Cilia Function in Algae and Humans. *Nat. Genet.* **2013**, *45*, 262–268. [[CrossRef](#)]
48. Horani, A.; Brody, S.L.; Ferkol, T.W.; Shoseyov, D.; Wasserman, M.G.; Ta-shma, A.; Wilson, K.S.; Bayly, P.V.; Amirav, I.; Cohen-Cymberek, M.; et al. CCDC65 Mutation Causes Primary Ciliary Dyskinesia with Normal Ultrastructure and Hyperkinetic Cilia. *PLoS ONE* **2013**, *8*, e72299. [[CrossRef](#)] [[PubMed](#)]
49. Olbrich, H.; Cremers, C.; Loges, N.T.; Werner, C.; Nielsen, K.G.; Marthin, J.K.; Philipsen, M.; Wallmeier, J.; Pennekamp, P.; Menchen, T.; et al. Loss-of-Function GAS8 Mutations Cause Primary Ciliary Dyskinesia and Disrupt the Nexin–Dynein Regulatory Complex. *Am. J. Hum. Genet.* **2015**, *97*, 546–554. [[CrossRef](#)]
50. McRae, K.M.; Baird, H.J.; Dodds, K.G.; Bixley, M.J.; Clarke, S.M. Incidence and Heritability of Ovine Pneumonia, and the Relationship with Production Traits in New Zealand Sheep. *Small Rumin. Res.* **2016**, *145*, 136–141. [[CrossRef](#)]



51. Merveille, A.-C.; Davis, E.E.; Becker-Heck, A.; Legendre, M.; Amirav, I.; Bataille, G.; Belmont, J.; Beydon, N.; Billen, F.; Clément, A.; et al. CCDC39 Is Required for Assembly of Inner Dynein Arms and the Dynein Regulatory Complex and for Normal Ciliary Motility in Humans and Dogs. *Nat. Genet.* **2011**, *43*, 72–78. [[CrossRef](#)]
52. Poprzeczko, M.; Bicka, M.; Farahat, H.; Bazan, R.; Osinka, A.; Fabczak, H.; Joachimiak, E.; Wloga, D. Rare Human Diseases: Model Organisms in Deciphering the Molecular Basis of Primary Ciliary Dyskinesia. *Cells* **2019**, *8*, 1614. [[CrossRef](#)] [[PubMed](#)]
53. Clark, E.L.; Bush, S.J.; McCulloch, M.E.B.; Farquhar, I.L.; Young, R.; Lefevre, L.; Pridans, C.; Tsang, H.G.; Wu, C.; Afrasiabi, C.; et al. A High Resolution Atlas of Gene Expression in the Domestic Sheep (*Ovis Aries*). *PLoS Genet.* **2017**, *13*, e1006997. [[CrossRef](#)] [[PubMed](#)]
54. Zheng, Y.; Zhang, J.; Wang, L.; Zhou, Z.; Xu, M.; Li, J.; Sha, J. Cloning and Characterization of a Novel Sperm Tail Protein, NYD-SP28. *Int. J. Mol. Med.* **2006**, *18*, 1119–1125. [[CrossRef](#)] [[PubMed](#)]
55. Sironen, A.; Shoemark, A.; Patel, M.; Loebinger, M.R.; Mitchison, H.M. Sperm Defects in Primary Ciliary Dyskinesia and Related Causes of Male Infertility. *Cell. Mol. Life Sci.* **2020**, *77*, 2029–2048. [[CrossRef](#)] [[PubMed](#)]
56. David, I.; Druart, X.; Lagriffoul, G.; Manfredi, E.; Robert-Granié, C.; Bodin, L. Genetic and Environmental Effects on Semen Traits in Lacaune and Manech Tête Rousse AI Rams. *Genet. Sel. Evol.* **2007**, *39*, 405. [[CrossRef](#)]
57. Kadri, N.K.; Sahana, G.; Charlier, C.; Iso-Touru, T.; Guldbbrandtsen, B.; Karim, L.; Nielsen, U.S.; Panitz, F.; Aamand, G.P.; Schulman, N.; et al. A 660-Kb Deletion with Antagonistic Effects on Fertility and Milk Production Segregates at High Frequency in Nordic Red Cattle: Additional Evidence for the Common Occurrence of Balancing Selection in Livestock. *PLoS Genet.* **2014**, *10*, e1004049. [[CrossRef](#)] [[PubMed](#)]
58. Hedrick, P.W. Heterozygote Advantage: The Effect of Artificial Selection in Livestock and Pets. *J. Hered.* **2015**, *106*, 141–154. [[CrossRef](#)]