



**HAL**  
open science

## **A comprehensive framework for assessing the accuracy and uncertainty of global above-ground biomass maps**

Arnan Araza, Sytze de Bruin, Martin Herold, Shaun Quegan, Nicolas Labriere, Pedro Rodriguez-Veiga, Valerio Avitabile, Maurizio Santoro, Edward T.A. Mitchard, Casey Ryan, et al.

### ► To cite this version:

Arnan Araza, Sytze de Bruin, Martin Herold, Shaun Quegan, Nicolas Labriere, et al.. A comprehensive framework for assessing the accuracy and uncertainty of global above-ground biomass maps. Remote Sensing of Environment, 2022, 272, pp.112917. 10.1016/j.rse.2022.112917 . hal-03620056

**HAL Id: hal-03620056**

**<https://hal.inrae.fr/hal-03620056>**

Submitted on 31 May 2022

**HAL** is a multi-disciplinary open access archive for the deposit and dissemination of scientific research documents, whether they are published or not. The documents may come from teaching and research institutions in France or abroad, or from public or private research centers.

L'archive ouverte pluridisciplinaire **HAL**, est destinée au dépôt et à la diffusion de documents scientifiques de niveau recherche, publiés ou non, émanant des établissements d'enseignement et de recherche français ou étrangers, des laboratoires publics ou privés.



Distributed under a Creative Commons Attribution 4.0 International License

Contents lists available at [ScienceDirect](https://www.sciencedirect.com)

## Remote Sensing of Environment

journal homepage: [www.elsevier.com/locate/rse](http://www.elsevier.com/locate/rse)

## A comprehensive framework for assessing the accuracy and uncertainty of global above-ground biomass maps

Arnan Araza<sup>a,b,\*</sup>, Sytze de Bruin<sup>a</sup>, Martin Herold<sup>a,c</sup>, Shaun Quegan<sup>d</sup>, Nicolas Labriere<sup>e,f</sup>, Pedro Rodriguez-Veiga<sup>g,h</sup>, Valerio Avitabile<sup>i</sup>, Maurizio Santoro<sup>j</sup>, Edward T.A. Mitchard<sup>k</sup>, Casey M. Ryan<sup>k</sup>, Oliver L. Phillips<sup>l</sup>, Simon Willcock<sup>m,n</sup>, Hans Verbeeck<sup>o</sup>, Joao Carreiras<sup>d</sup>, Lars Hein<sup>b</sup>, Mart-Jan Schelhaas<sup>p</sup>, Ana Maria Pacheco-Pascagaza<sup>g,q</sup>, Polyanna da Conceição Bispo<sup>q</sup>, Gaia Vaglio Laurin<sup>r</sup>, Ghislain Vieilledent<sup>s</sup>, Ferry Slik<sup>t</sup>, Arief Wijaya<sup>u</sup>, Simon L. Lewis<sup>v,w</sup>, Alexandra Morel<sup>x</sup>, Jingjing Liang<sup>y</sup>, Hansrajie Sukhdeo<sup>z</sup>, Dmitry Schepaschenko<sup>aa,ab,ac</sup>, Jura Cavlovic<sup>ad</sup>, Hammad Gilani<sup>ae</sup>, Richard Lucas<sup>af</sup>

<sup>a</sup> Laboratory of Geo-information and Remote sensing, Wageningen University and Research, Droevendaalsesteeg 3, 6708 PB Wageningen, Netherlands

<sup>b</sup> Environmental Systems Analysis, Wageningen University and Research, Droevendaalsesteeg 3a, 6708 PB Wageningen, Netherlands

<sup>c</sup> Helmholtz GFZ German Research Centre for Geosciences, Section 1.4 Remote Sensing and Geoinformatics, Telegrafenberg, Potsdam 14473, Germany

<sup>d</sup> National Centre for Earth Observation (NCEO) and University of Sheffield, Hicks Building, Sheffield S3 7RH, UK

<sup>e</sup> Laboratoire Évolution et Diversité Biologique (EDB), UMR 5174 (CNRS/IRD/UPS), 118 route de Narbonne, 31062 Toulouse Cedex 9, France

<sup>f</sup> Université Toulouse, 41 Allées Jules Guesde, CS 61321, 31013 Toulouse Cedex 6, France

<sup>g</sup> Centre for Landscape and Climate Research, School of Geography, Geology and the Environment, University of Leicester, LE1 7RH, UK

<sup>h</sup> National Centre for Earth Observation, University of Leicester, Space Park Leicester, LE4 5SP, Leicester, UK

<sup>i</sup> European Commission, Joint Research Centre (JRC), European Commission, Ispra, Italy

<sup>j</sup> Gamma Remote Sensing, Worbstrasse 225, Gümliigen, Switzerland

<sup>k</sup> School of GeoSciences, University of Edinburgh, Crew Building, The King's Buildings, EH9 3FF, UK.

<sup>l</sup> School of Geography, University of Leeds, Woodhouse Lane, Leeds LS2 9JT, UK

<sup>m</sup> School of Natural Sciences, Bangor University, UK

<sup>n</sup> Rothamsted Research, West Common, Harpenden AL5 2JQ, UK

<sup>o</sup> Computational and Applied Vegetation Ecology, Faculty of Bioscience Engineering, Ghent University, Ghent, Belgium

<sup>p</sup> Wageningen Environmental Research, Wageningen University and Research, Droevendaalsesteeg 3-3 A, 6708 PB Wageningen, Netherlands

<sup>q</sup> Department of Geography, School of Environment, Education and Development, University of Manchester, Manchester, UK

<sup>r</sup> Department for Innovation in Biological, Agro-food, and Forestry Systems, Tuscia University, Viterbo, Italy

<sup>s</sup> AMAP, Univ Montpellier, CIRAD, CNRS, INRAE, IRD, Montpellier, France

<sup>t</sup> Environmental and Life Sciences, Faculty of Science, Universiti Brunei Darussalam, Brunei Darussalam

<sup>u</sup> Research, Data and Innovation Department, World Resources Institute Indonesia, Jl. Wijaya 1/63, South Jakarta, Indonesia

<sup>v</sup> Department of Geography, University College London, London WC1E 6BT, UK

<sup>w</sup> School of Geography, University of Leeds, Woodhouse, Leeds LS2 9JT, UK

<sup>x</sup> Department of Geography and Environmental Sciences, University of Dundee, Nethergate, Dundee DD1 4HN, UK

<sup>y</sup> Department of Forestry and Natural Resources, Purdue University, West Lafayette, IN USA

<sup>z</sup> Guyana Forestry Commission, 1 Water Street Kingston, Georgetown, Guyana

<sup>aa</sup> International Institute for Applied Systems Analysis, Laxenburg 2361, Austria

<sup>ab</sup> Center of Forest Ecology and Productivity of the Russian Academy of Sciences, Moscow 117997, Russia

<sup>ac</sup> Institute of Ecology and Geography, Siberian Federal University, Krasnoyarsk 660041, Russia

<sup>ad</sup> University of Zagreb, Faculty of Forestry and Wood Technology, Department of Forest Inventory and Management, Croatia

<sup>ae</sup> Institute of Space Technology, 1 Islamabad Highway, Islamabad 44000, Pakistan

<sup>af</sup> Department of Geography and Earth Sciences, Aberystwyth University, Aberystwyth, Ceredigion SY23 3DB, UK

## ARTICLE INFO

Editor: Marie Weiss

## ABSTRACT

Over the past decade, several global maps of above-ground biomass (AGB) have been produced, but they exhibit significant differences that reduce their value for climate and carbon cycle modelling, and also for national

\* Corresponding author at: Laboratory of Geo-information and Remote sensing, Wageningen University and Research, Droevendaalsesteeg 3, 6708 PB Wageningen, Netherlands.

E-mail address: [arnan.araza@wur.nl](mailto:arnan.araza@wur.nl) (A. Araza).

<https://doi.org/10.1016/j.rse.2022.112917>

Received 22 March 2021; Received in revised form 14 January 2022; Accepted 17 January 2022

Available online 9 February 2022

0034-4257/© 2022 The Authors. Published by Elsevier Inc. This is an open access article under the CC BY license (<http://creativecommons.org/licenses/by/4.0/>).

**Keywords:**

AGB  
Carbon cycle  
Map validation  
Uncertainty assessment  
Remote sensing

estimates of forest carbon stocks and their changes. The number of such maps is anticipated to increase because of new satellite missions dedicated to measuring AGB. Objective and consistent methods to estimate the accuracy and uncertainty of AGB maps are therefore urgently needed. This paper develops and demonstrates a framework aimed at achieving this. The framework provides a means to compare AGB maps with AGB estimates from a global collection of National Forest Inventories and research plots that accounts for the uncertainty of plot AGB errors. This uncertainty depends strongly on plot size, and is dominated by the combined errors from tree measurements and allometric models (inter-quartile range of their standard deviation (SD) = 30–151 Mg ha<sup>-1</sup>). Estimates of sampling errors are also important, especially in the most common case where plots are smaller than map pixels (SD = 16–44 Mg ha<sup>-1</sup>). Plot uncertainty estimates are used to calculate the minimum-variance linear unbiased estimates of the mean forest AGB when averaged to 0.1°. These are used to assess four AGB maps: Baccini (2000), GEOCARBON (2008), GlobBiomass (2010) and CCI Biomass (2017). Map bias, estimated using the differences between the plot and 0.1° map averages, is modelled using random forest regression driven by variables shown to affect the map estimates. The bias model is particularly sensitive to the map estimate of AGB and tree cover, and exhibits strong regional biases. Variograms indicate that AGB map errors have map-specific spatial correlation up to a range of 50–104 km, which increases the variance of spatially aggregated AGB map estimates compared to when pixel errors are independent. After bias adjustment, total pantropical AGB and its associated SD are derived for the four map epochs. This total becomes closer to the value estimated by the Forest Resources Assessment after every epoch and shows a similar decrease. The framework is applicable to both local and global-scale analysis, and is available at <https://github.com/arnanaraza/PlotToMap>. Our study therefore constitutes a major step towards improved AGB map validation and improvement.

## 1. Introduction

Above-ground biomass (AGB) is the total mass of material stored in the living stems, branches and leaves of vegetation, and is often described as a biomass density, with units of mass per unit area. AGB is recognised by the Global Climate Observing System (GCOS) as an Essential Climate Variable (ECV), primarily because it is intimately related to both emissions of CO<sub>2</sub> to the atmosphere arising from land use change and fire, and uptake of CO<sub>2</sub> from the atmosphere due to vegetation growth (GCOS, 2016). However, it has much wider significance because of its value to human societies for energy, materials and other ecosystem services, and is also important in forest management and for policy initiatives such as Reducing Emissions from Deforestation and forest Degradation (REDD+). As a result, there have been major efforts to map forest AGB using Earth Observation (EO) data (Herold et al., 2019); at least 15 AGB maps for five epochs have been derived at pantropical to global scales according to meta-analyses by Rodríguez-veiga et al. (2017) and Zhang et al. (2019).

Further maps are anticipated because of new missions dedicated to measuring forest structure and AGB, including the Global Ecosystem Dynamics Investigation (GEDI) LiDAR mission (Dubayah et al., 2020), the NASA-ISRO Synthetic Aperture Radar (NISAR) (Kellogg et al., 2020) and the ESA-BIOMASS SAR mission (Quegan et al., 2019).

Current AGB maps were derived using different methods and data sources (Langner et al., 2014; Rodríguez-veiga et al., 2017; Mitchard et al., 2013; Réjou-Méchain et al., 2019). This leads to significant disagreements between them that reduce their value for estimating carbon stocks in global and national applications. In addition, the maps have specific individual error properties, rendering them unreliable for biomass change analysis, despite representing different epochs (Herold et al., 2019).

The accuracy of AGB estimates is normally quantified by characterising their error, i.e., the difference between the estimated and true AGB; this is normally unknown unless trees are destructively harvested to obtain their true weight. Ideally, the full error distribution would be known, but accuracy is commonly described statistically using various moments of the error distribution. Often, only two moments of the error are considered: the bias, which is the mean value of the error, and the precision, which quantifies the spread in the distribution of random errors around this mean (Dieck, 2007). These random errors are often less troublesome since their dispersion can be reduced by averaging, but this does not reduce bias.

There are many potential sources of bias in AGB estimation, including methodological, human and equipment biases when measuring tree dimensions; the use of incorrect allometric models when estimating tree AGB from these measurements; factors affecting EO signals such as saturation at high biomass, and mixed soil and vegetation components influencing signals from low biomass areas (Réjou-Méchain et al., 2019); and variations in the EO signal due to environmental effects such as rain and snow (Santoro et al., 2015). As a result, a consistently observed pattern in current AGB maps derived from space data is overestimation of low biomass and underestimation of high biomass (Réjou-Méchain et al., 2019; Rodríguez-veiga et al., 2019).

Assessment of the accuracy of an AGB map has to take into account both errors in the map itself and in the reference data used to validate it (Duncanson et al., 2021). Reference data are commonly in situ plot measurements (plot data), whose uncertainty can be quantified using methods described in the Committee for Earth Observing Satellites (CEOS) AGB validation protocol (Duncanson et al., 2021). Plot uncertainties originating from tree measurements have rigorously been assessed at local scales (McRoberts et al., 2016; Chave et al., 2004; Harmon et al., 2015; Réjou-Méchain et al., 2017), and their propagation into AGB maps has been assessed at local (Chen et al., 2015) and regional scales (Rodríguez-veiga et al., 2016). At larger scales, Avitabile and Camia (2018) accounted for both plot and map uncertainties in four pan-European maps using independent plot data to evaluate map bias and precision.

Consistent accuracy and uncertainty assessment of continental and global scale AGB maps are hampered by the lack of a global reference dataset (Schimel et al., 2015; Rodríguez-veiga et al., 2017). Sampling the world's forests is highly labour-intensive and expensive, and forest inventory data are often not open access. National Forest Inventories (NFIs) have been established only in a limited set of countries, of which a minority are in tropical areas (McRoberts and Tomppo, 2007). In addition, NFIs in the tropics are often incomplete or unrepresentative because forest regions may be remote, inaccessible, or located in conflict areas. Efforts have recently started to centralize and standardize AGB plot data. The Forest Observation System (FOS) provides access to thousands of plot data (Schepaschenko et al., 2019), and the standardization of plot data from large plots and LiDAR-derived transects has been advocated (Chave et al., 2019). Other data sources, such as the Global Forest Biodiversity Initiative (GFBI) (Liang et al., 2016), provide data to researchers by request and GFBI also encourages the contribution of data. Fine-resolution AGB maps from LiDAR can also be used as

an alternative to plot data for AGB map validation (McRoberts et al., 2019a) and provide high-quality AGB estimates over more extended areas than forest inventories (Labriere et al., 2018). Nevertheless, there are only a few fine-resolution AGB maps, open access data sources and proprietary plot data that can be used under data-use agreements. The consequent lack of a consistently sampled reference AGB dataset has consequences for statistical inference, which is only possible under certain assumptions and requires the data to be accompanied by uncertainty estimates (de Bruin et al., 2019; McRoberts et al., 2020; Duncanson et al., 2021).

Using a collection of plot datasets with uncertainty estimates across the globe offers several opportunities. Firstly, differences between plot measurements and global AGB maps can reveal regional patterns that may be explainable by environmental and/or ecological variables (de Bruin et al., 2019). This would allow these differences to be predicted using model-based approaches. For example, Tsutsumida et al. (2019) identified geographical areas with high AGB errors, attributing error hotspots to local land use practices. Secondly, global data can be used to investigate bias and develop bias reduction methods. As examples, Xu et al. (2016) and Zhang and Liang (2020) applied random forest regression to model and remove AGB map bias, whilst Avitabile et al. (2016) combined weighted linear averaging with bias removal methods when fusing the Saatchi et al. (2011b) and Baccini et al. (2012) pantropical maps. Thirdly, the availability of plot-level uncertainties allows evaluation of the extent to which plot-map differences can be attributed to map error.

A key GCOS principle for climate monitoring is that random errors and time-dependent biases in satellite observations and derived products should be identified (GCOS, 2016), and more generally map users prefer AGB maps to be unbiased and to have spatially explicit uncertainty information (Quegan and Ciais, 2018). The latter should include information on the spatial correlation of map errors since this is needed to model the precision of AGB estimates derived by averaging and summing map pixel values at coarser grid or country scales (de Bruin et al., 2019). In this paper, we propose a model-based framework

designed to meet these needs using a global opportunistic sample of plot data to assess four AGB maps. This allows four questions to be addressed: (1) What is the error contribution from different plot error sources? (2) How can map bias be assessed? (3) How can map users and producers benefit from this framework? (4) How can the framework be applied to derive the total AGB and its uncertainty in the pantropics in different periods?

## 2. Materials and methods

### 2.1. A framework for comparing plot and map estimates of AGB

The framework first pre-processes plot data to minimize forest area (where “forest” is set to be 30-m pixels with >10% tree cover (Hansen et al., 2013)) and temporal mismatches with the AGB maps (Section 2.2), and then has three main analysis steps highlighted in Fig. 1. Although plot estimates of AGB may be biased if an incorrect allometric model is used, this bias will tend to be small if local allometric models are used, as is often the case for NFIs and research plots (Chave et al., 2014). Hence we here assume they are unbiased and, after quantifying their uncertainties (Section 2.3), use them to calculate the minimum-variance linear unbiased (MVLU) estimates of the mean AGB within 0.1° grid cells, together with their uncertainties (Section 2.4). This allows the biases in the maps to be quantified. Map bias and the spatial correlation of random map errors are then modelled, respectively using spatial covariates and variograms of AGB residuals as inputs (Section 2.5), and applied to four global AGB maps (Baccini, GEOCARBON, GlobBiomass and CCI Biomass; see Section 2.2). Finally, we estimate the total pantropical AGB for each map epoch, together with their confidence intervals, and compare them with the values from the 2020 Forest Resource Assessment (FRA) (UN-FAO, 2020) (Section 2.6).

### 2.2. Data inputs

Three types of input data are needed to implement the framework:

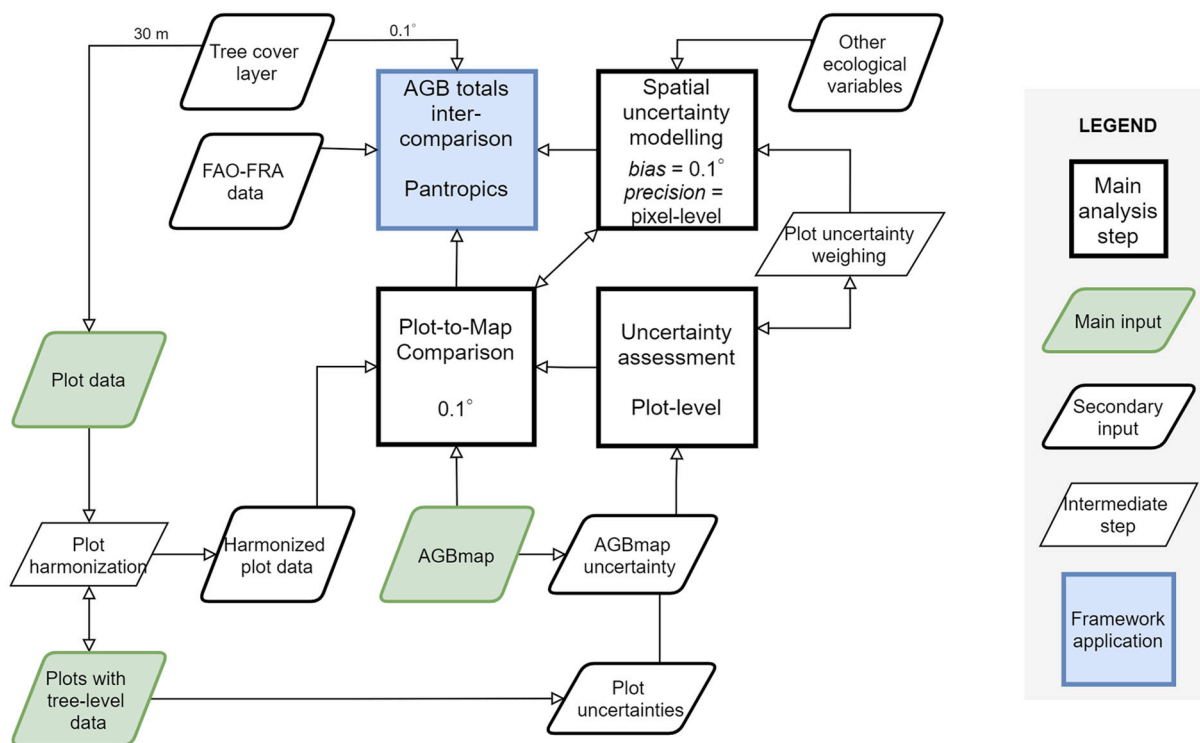


Fig. 1. Schematic of the framework indicating the three main inputs and three analysis steps leading to the comparison between plot and map estimates of AGB and the totals of the latter. Note the two-way link between the plot-to-map comparison and uncertainty modelling, indicating the assessment of map accuracy.

(1) plot estimates of AGB, which we refer to as plot data; (2) plot data with tree-level measurements (at least tree diameter), referred to as plots with tree data; and (3) global AGB maps.

### 2.2.1. Plot data

We used a global collection of plot data from NFIs (often derived using systematic sampling) and research network plots; the latter were mainly in the tropics, where they make up a quarter of the tropical plots. Most plot data were obtained under data-use agreements (see Table S1 for the plot metadata). From them, we selected a subset meeting the following criteria. Plots should:

1. not have been used for AGB map calibration;
2. have precise coordinates to at least four decimal places in decimal degrees;
3. have been measured within ten years of the map epoch (McRoberts et al., 2015);
4. have plot-level AGB estimated using all trees with a diameter at breast height (DBH) of 10 cm or greater;
5. not have been deforested in the period between the inventory and the map epoch, according to forest loss data (Hansen et al., 2013);
6. have comprehensive metadata that contains information about the field measurements, allometric model and sampling scheme used;
7. have an associated report or other publication.

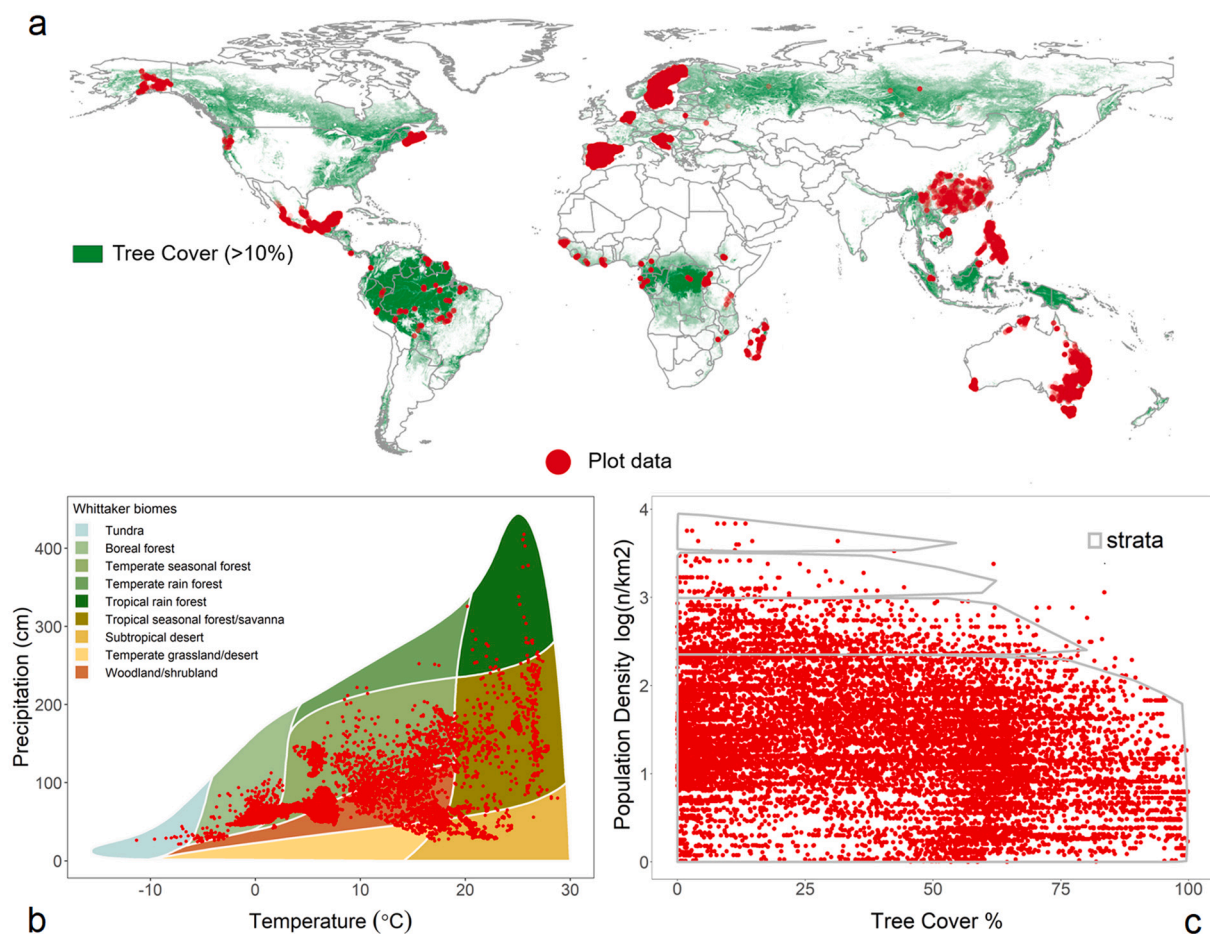
This yielded a total of at most 116,181 (out of a possible 225,698) globally distributed plots to be used as reference data. Their coverage

was assessed against: (a) world regions and tree cover; (b) biomes defined by specific precipitation and temperature regimes (Iremonger and Gerrard, 2011); (c) strata derived from tree cover and population density, in order to assess plot coverage in forests with and without human disturbance (Fig. 2). The plot data cover all biomes (though some, such as portions of boreal and tropical rainforest, are under-represented) and they extend over all the population density and tree cover strata.

The size of individual plots ranges from 0.02 ha to 25 ha, with a median size of 0.20 ha, and they cover a total area of 18,192 ha. The plot measurements took place between 1996 and 2018, and their AGB values were estimated using allometric models deemed appropriate for their forest area by the data providers. The mean plot AGB is  $100.70 \text{ Mg ha}^{-1}$  with a standard deviation (SD) of  $158.31 \text{ Mg ha}^{-1}$ . More comprehensive plot summary statistics are shown in Table S2.

### 2.2.2. Harmonizing plot and map data

Comparisons between plot and map data are only meaningful if they share common spatial and temporal characteristics. This requires applying two pre-processing steps to the plot data. For plots surveyed either before or after the map epoch, the first uses forest growth data and the number of years between the plot and map estimates to adjust the plot AGB to the date of the map data (Avitabile and Camia, 2018). We used the growth data from model-based estimates derived from chronosequences and permanent plots for the tropics and subtropics (Requena Suarez et al., 2019), and for temperate and boreal regions (Buendia et al., 2019); these are improvements of the estimates in the



**Fig. 2.** Distribution of the plot data: (a) within countries and areas with >10% tree cover (Hansen et al., 2013); (b) within ecological regions or biomes (Whittaker, 1975) as a function of rainfall and temperature; (c) within strata with and without possible man-made forest disturbances as indicated by a scatterplot of log<sub>2</sub>-scaled human population density (Balk and Yetman, 2004) against tree cover percentage.

IPCC 2006 report. Specific growth data are used depending on the forest type, ecological region, forest age and continent. The second step deals with the different areas of the forest plots and the AGB map support unit (i.e., the original pixel size or a coarser grid cell). Note that the map provides an estimate of AGB within each support unit, but this may include non-woody and non-forest areas, especially in heterogeneous and fragmented landscapes (Chave et al., 2004; Nascimento and Laurance, 2002). AGB maps including non-forest woody vegetation are also preferred by some users, including climate modellers (Quegan and Ciais, 2018). To provide an estimate of the same quantity from plot data, we assume that the plot data properly represent the forested part of the support unit and other types of land cover have negligible AGB. Then for plots smaller than the support unit, the plot-based estimate of the AGB in the support unit (or average AGB for coarser grid cells) is given by multiplying the plot AGB by the forest fraction (0–1), where this is derived by defining forests as areas with at least 10% tree cover (following Food and Agriculture Organization guidelines (UN-FAO, 2010)) and using the 30-m tree cover layer by Hansen et al. (2013).

### 2.2.3. AGB maps

From the AGB maps listed in Table S3, four were selected on the basis of three criteria: (1) global extent; (2) open access; (3) accompanying maps of uncertainty (referred to as an SD layer). The Baccini map (epoch 2000), is based on the two-step method of Baccini et al. (2012) that first establishes a statistical model relating spaceborne LiDAR metrics to AGB reference plots, allowing AGB estimation at the LiDAR footprints. These AGB estimates are then used to calibrate a statistical model which estimates AGB from Landsat reflectance, thus generating a global AGB map accessible at <https://www.globalforestwatch.org/>. The available SD layer of the Baccini map includes estimates of errors from allometric models, the LiDAR-based model and the Landsat-based model, and is currently limited to the pantropics, but the provision of the global layer on the Global Forest Watch platform is planned (Table S3). The GEO-CARBON 2007–2010 map (Avitabile et al., 2014) was produced by combining a refined pantropical map (Avitabile et al., 2016) (a fusion of the Saatchi et al. (2011b) and Baccini et al. (2012) maps) with the boreal map of Santoro et al. (2015), to obtain global coverage. The SD layer of the refined pantropical map is estimated using a procedure based on error stratification, whereas that of the boreal map accounts for random variation in the radar backscatter intensity used to predict growing stock volume (GSV) and AGB. The GlobBiomass 2010 and the CCI Biomass 2017 version 1 maps were produced from spaceborne synthetic aperture radar (SAR) images of backscattered intensity (Santoro and Cartus, 2019; Santoro et al., 2021), from which GSV was estimated using physically-based models and then converted to AGB by scaling for wood density and biomass expansion factors estimated from empirical models (Santoro et al., 2021). The SD layers of the two maps account for random errors in radar data and from the biomass retrieval process and its parameters using a first-order Taylor series approach. The Baccini and GEOCARBON maps are limited to forest areas, while GlobBiomass and CCI Biomass maps include non-forest areas.

## 2.3. Uncertainty in estimating AGB from plot data

The plot harmonization described in Section 2.2 involves adjusting plot values to minimize temporal and areal mismatches between the plot and map estimates, both of which involve uncertainty. Another cause of difference between the true AGB in a map pixel and its estimate from plot data comes from sampling errors since plots are typically smaller than map pixels (Baccini et al., 2007). This section describes the methods used to estimate the SDs of these error sources and the SD when estimating plot-level AGB itself.

### 2.3.1. Plot measurement and allometric model errors

Non-destructive forest inventory is the traditional method used to estimate tree AGB, but has an uncertainty of 5–44% at the stand scale

(Burt et al., 2020). Tree measurement errors originate from uncalibrated surveying tools and human errors, which propagate into the allometric model used to estimate AGB from tree diameter (and height) per tree, and then into aggregation at plot-level (Réjou-Méchain et al., 2017). The cumulative error from tree measurement and allometric models is termed “measurement error” in this study.

To estimate the uncertainty in measurement errors ( $SD_{me}$ ), plots with tree data were used to estimate how errors in individual tree measurements propagate into biomass estimates at plot-level. We used data from 8457 plots, ranging from 0 to 25 ha in size and with a total of 267,907 trees. These plots are within all the major climatic zones (tropics, subtropics, temperate and boreal) and across eight countries, of which the majority are in the tropics. However, plots with tree data constitute only 7.4% of all plot data used in our analysis. A two-step approach was therefore implemented to predict  $SD_{me}$  for all plots using a model calibrated on the plots with tree data.

The first step estimated tree-level errors due to uncertainty in tree parameters (wood density, diameter and tree height). Tree wood density data and their uncertainty were obtained from global and regional databases (Chave et al., 2009). For trees without height data, stem diameter was used to estimate height,  $H$ , using the Weibull height-diameter model (Eq. (1)). This three-parameter estimator of  $H$  has been tested within tropical forests (Feldpausch et al., 2012), temperate coniferous forests in Norway (Mahanta and Borah, 2014) and China (Zhang et al., 2014), boreal forests (Zhang et al., 2018), and coniferous forests in the Philippine Highlands (Anacioco et al., 2018):

$$H = a(1 - \exp(-(DBH/b)^c)) \quad (1)$$

where  $DBH$  is diameter at breast height and  $a$ ,  $b$  and  $c$  are fitted coefficients.

Errors arising from the parameters in the biomass allometric model, such as model coefficients and residual standard errors, were also considered. These data are derived from the dataset of destructive tree measurements provided in Chave et al. (2014). The overall error propagation included the probability distributions of the tree and allometric model parameters and was implemented by running 1000 Monte Carlo simulations using the *AGBmonteCarlo* function of the *BIOMASS R* package (Réjou-Méchain et al., 2017). The outputs are estimates of AGB and its  $SD_{me}$  for each tree, which were aggregated and scaled to plot-level.

In the second step, a random forest (RF) model trained on the  $SD_{me}$  of the 8457 plots using climatic zones, AGB and plot size as covariates was used to predict  $SD_{me}$  for all plots. The RF model predictions were tested using an independent random subset containing a third ( $n = 2819$ ) of the plots with tree data. The evaluation of the model resulted in an  $R^2$  of 0.86 and Root Mean Square Error (RMSE) of  $22.1 \text{ Mg ha}^{-1}$ .

### 2.3.2. Temporal differences

The correction for plot and map temporal mismatch introduces errors caused by uncertainties in the growth rate, for which data are available per forest type, biome and continent. To derive the temporal uncertainty for the plots,  $SD_{td}$ , we multiplied the SD of the growth data in Table 4.9 of IPCC 2019 (Buendia et al., 2019),  $SD_{gr}$ , in  $\text{Mg ha}^{-1} \text{ yr}^{-1}$ , by the difference between the plot survey year ( $PY$ ) and the map epoch ( $MY$ ):

$$SD_{td} = SD_{gr} * |MY - PY| \quad (2)$$

### 2.3.3. Sampling error

The sampling error can be significant, especially when the AGB exhibits large local variability since plots are often smaller than map pixels (Baccini et al., 2007). To estimate this within-pixel sampling error, spatial configurations using measured data from 8 to 60 ha plots and 5–250 m EO footprints were simulated by Réjou-Méchain et al. (2014). For each simulation, configurations of both plot and pixel were randomly located. For simulations where plots are smaller than pixels,

the RMSE was computed and normalized by the mean AGB of the footprint to derive a Coefficient of Variation (CV).

We adopted the results of Fig. 6 and Table S2 of Réjou-Méchain et al. (2014) to train an RF model to predict CV as a function of plot size and AGB map pixel size. We evaluated the model using one-third of the total set of plots ( $n = 38,727$ ) which yielded an  $R^2$  of 0.81 and an RMSE of 0.07. The CV was then converted into the SD of sampling error ( $SD_{se}$ ) by multiplying by the mean AGB of all the plot data ( $\bar{\mu}AGB$ ) (Eq. (3)).

$$SD_{se} = \bar{\mu}AGB * CV \quad (3)$$

#### 2.3.4. Plot-level uncertainty

Assuming the three error sources are independent, the uncertainty in the estimate of the mean AGB within a map pixel using plot data,  $SD_p$ , is then given by:

$$SD_p = \sqrt{SD_{me}^2 + SD_{ld}^2 + SD_{se}^2} \quad (4)$$

The SDs of the three main plot error sources and the maps were analyzed for each map over three groups of plot sizes: large plots (1–25 ha), plots of moderate size (0.3–1 ha) and smaller plots, usually from NFIs (<0.3 ha); and over biomass ranges (<150, 150–300, and >300 Mg ha<sup>-1</sup>). The same grouping was also used to summarize the SD layers of the maps.

## 2.4. Comparison of plot and map estimates of AGB

### 2.4.1. Aggregation to 0.1° grid cells

The plot data were compared with the AGB maps in 0.1° grid cells (referred to below as default AGB maps), which is a spatial scale comparable to those typically used in global carbon cycle and climate models. Non-forest pixels (taken to have AGB = 0) were included for Baccini and GEOCARBON prior to aggregation to avoid biasing the 0.1° AGB averages if only forest pixels are used. For each grid-cell  $i$ , its average AGB was estimated from the map data by averaging the AGB estimates at each pixel in the cell; and from the plot data by the MVLU estimate under the assumption that the plot data are unbiased. The MVLU estimate is the weighted mean of each plot estimate of AGB,  $x$ , inside the grid cell  $i$ , where the weight is inversely proportional to the variance of  $x$ . Hence the plot-based estimate of the AGB of the grid cell has uncertainty  $SD_{pG}(i)$  given by Eq. (5), where the summation is over all plots in the grid cell.

$$SD_{pG}(i) = \sqrt{1 / \sum (1 / SD_p^2(x))} \quad (5)$$

Only grid cells containing at least 5 plots were selected; on average these cells contained 15 plots, with an average total area of 2.3 ha. Around 46% of the total number of available grid cells were excluded from this selection process. Similar studies have also set minimum plot numbers to select grid cells for map assessment, e.g., Fazakas et al. (1999); Baccini et al. (2012, 2017); Xu et al. (2021). Although in some cases these plots may not properly represent the grid cell, notably when they are research plots lying in particular types of forest, only 4% globally and 24% of the tropical plots used for analysis are research plots. This issue is discussed further in Section 4.3, and Figs. S1 and S2.

### 2.4.2. Evaluation of differences between plot and map estimates of AGB

Plot and map estimates of AGB were tabulated and compared in AGB bins of width 50 Mg ha<sup>-1</sup>. For each bin, the following accuracy metrics were computed: Root Mean Squared Difference (RMSD) between map and plot AGB at 0.1° ( $AGB_{mG}$  and  $AGB_{pG}$ ) for all grid cells within the bin ( $n$ ) (Eq. (6)); and the Mean Difference  $MD$  (Eq. (7)), which is interpreted as map bias or simply “bias”. Scatterplots were also used to locate transitions from map overestimation to underestimation and AGB ranges exhibiting little bias. The scatterplots have a higher number of AGB bins than the tabulated results.

$$RMSD = \sqrt{\frac{\sum_{i=1}^n (AGB_{mG}(i) - AGB_{pG}(i))^2}{n}} \quad (6)$$

$$MD = (\bar{\mu}AGB_{mG} - \bar{\mu}AGB_{pG}) \quad (7)$$

### 2.4.3. Map error conformity

We assessed whether the reported map SD is consistent with the plot SD and the other uncertainty components at 0.1° using a metric denoted as map error conformity (EC). Map uncertainty is classified as optimistic (OP) or pessimistic (PE) according to Eq. (8).

$$EC = \begin{cases} OP & \text{if } (\bar{\mu}SD_{mG}^2) \leq RMSD^2 - MD^2 - (\bar{\mu}SD_{pG}^2) \\ PE & \text{otherwise} \end{cases} \quad (8)$$

## 2.5. Spatial uncertainty

This section details the model-based approach to predicting bias and the geostatistical approach to modelling precision when aggregating map SD over the tropics. The restriction to the tropics is because the extra-tropical SD layer is not currently available for the Baccini map (Section 2.2), and since most plots with tree-level data used for measurement error estimation are in the tropics.

### 2.5.1. The random forest algorithm

We used RF (Breiman, 2001) to model and predict bias. RF is a non-parametric ensemble model of decision trees from bootstrapped samples of the training data and produces averaged predictions (RF regression). We implemented RF using the *ranger* R package (Wright and Ziegler, 2017). This provides a standard error (SE) of the RF model, calculated using the infinitesimal jackknife approach (Wager et al., 2014) along with a function *case.weights* that prioritizes data with higher weights when forming the bootstrap samples, and hence the trees of the RF model.

### 2.5.2. Bias modelling

We modelled bias using RF regression and data at 0.1° to form weighted bootstrap samples. The model used open access sources of spatially exhaustive covariates that were considered to have a possible influence on bias (Chave et al., 2004; Réjou-Méchain et al., 2014; Santoro et al., 2015), all averaged to 0.1°. We first tested 11 covariates, including the AGB map itself, its reported uncertainty, slope, aspect, tree cover, elevation, rainfall, temperature, biome, longitude and latitude. Using all and partial combinations of the covariates, we created multiple RF models using the default RF hyperparameters. The models were evaluated using a randomly held-out 30% of the 0.1° data to assess the proportion of the variance of residuals explained by the model. We then visually inspected the bias for indications of geographic correlation among covariates, as suggested in Meyer et al. (2019). After this initial investigation, we limited the covariates to the five listed in Table 1, which also gives brief metadata on the final covariates.

The predictive power of the covariates in the RF model was assessed by the Variable Importance Measure (VIM) and Partial Dependence Plots (PDP). VIM is the mean decrease in accuracy of an RF model after data permutation of a covariate, while a PDP shows the marginal effect of covariates on bias prediction. We normalized and ranked the VIM for every AGB map. The PDPs are displayed as matrices, color-coded with bias and with the axes labelled by the values of a covariate pair, e.g., bias plotted against AGB map and tree cover (Fig. S3).

Under the assumption that the error in the estimated bias is normally distributed, we derived the 95% confidence intervals (CI) of the predicted bias ( $\widehat{MD}$ ) using the SE from the RF model (Eq. (9)). The estimated bias was then subtracted from the default 0.1° AGB map at all grid cells where the 95% CI of bias does not include zero. The corrected AGB maps (referred to as bias-adjusted) were then compared with the plot

**Table 1**  
Covariates used in bias modelling, with a brief description, unit and spatial resolution.

Covariates	Label	Data description	Data unit	Original spatial pixel size (m)
AGB map	AGB	The AGB maps according to Baccini, GEOCARBON, GlobBiomass, and CCI Biomass	Mg ha <sup>-1</sup>	30,1000,100,100
Map uncertainty layer	SD	SD of propagated errors from RS inputs and biomass model parameters when predicting AGBmap	Mg ha <sup>-1</sup>	30,1000,100,100
slope	SL	Terrain steepness computed from SRTM v4.1 (Jarvis et al., 2008) <sup>1</sup> using the Horn 1981 algorithm suited for rough terrain	% rise	30
aspect	ASP	Orientation of slope with respect to compass direction	degrees	30
tree cover	TC	Tree cover percentage. Source data varies between maps: Baccini = TC2000-GFC; GEOCARBON and GlobBiomass and CCI Biomass = TC2010-GFC	1–100	30,30,30

<sup>1</sup> Used GTOPO30 (GTOPO30-global, 2002) for latitudes over 60 degrees north.

estimates at 0.1° using a third of the total grid cells independent from the data used for bias modelling (Fig. S4).

$$95\%CI = \widehat{MD} \pm 1.96*SE \quad (9)$$

### 2.5.3. Uncertainty of the aggregated AGB map over the tropics

Model-based inference (as used in this study) has to account for spatial correlation in map errors when summing or averaging over an area. Furthermore, the variance of map errors may vary over space (heteroscedasticity). To account for the latter, the AGB residual,  $AGB_R(x)$ , defined as map-plot difference at plot location  $x$ , was scaled by the map SD; this assumes the SD of the residuals is proportional to the map SD at that point (Eq. (10)):

$$SR(x) = \frac{AGB_R(x)}{SD_m(x)} \quad (10)$$

where  $SR(x)$  is the scaled residual and  $SD_m(x)$  is the map SD. This scaling was assumed to transform the residuals to homoscedasticity.

We then generated variogram models,  $\gamma(h)$  in Eq. (11), to estimate the spatial correlation of  $SR$  at spatial lag  $h$ , where  $x$  is a plot location, and the errors are assumed to be statistically stationary:

$$\gamma(h) = \frac{1}{2} \text{Var} \left[ SR(x) - SR(x+h) \right] \quad (11)$$

As proposed in Christensen (2011), the variograms were adjusted for the variance of plot errors by subtracting the mean  $SD_p/SD_m$  from the nugget of the variograms. Using the adjusted variograms,  $SD_m(i)$  was computed using the covariances estimated at the original map scale within each grid cell. An identical procedure was adopted when estimating the SD in the total pantropical AGB for each map (Section 3.4). This step is based on the covariances  $\sigma_{i,j}$  of grid cell pairs  $i$  and  $j$  (1...n), derived after convoluting the adjusted variograms from the original map pixel size to 0.1° following the procedure of Kyriakidis (2004). These covariances of the map error component yielded the variance and hence SD of the total estimated AGB within the tropical belt ( $SD_{trop}$ ) (Eq. (12)):

$$SD_{trop} = \sqrt{\sum_{i=1}^n \sum_{j=1}^n \sigma_{i,j}} \quad (12)$$

For each AGB map, this was transformed to a 95% CI of the subsequent pantropical AGB corresponding to each map epoch.

## 2.6. Total pantropical AGB

The total pantropical AGB (–25° to 25° latitude) estimated from bias-adjusted maps was compared to that given by the default 0.1° maps i.e., not adjusted for bias. The 2020 FRA (UN-FAO, 2020) data for 2000, 2010 and 2017 (2017 as the average of 2015 and 2020) were also used to assess how AGB data compares with map estimates over time. Since the FRA provides AGB only in forest areas, we used 0.1° tree cover maps to remove 0.1° grid cells whose forest cover was less than a given

threshold, chosen to produce a pantropical forest area close to that reported in the FRA. We used the Hansen et al. (2013) tree cover from 2000 for the 2000 map and from 2010 for the 2010 and 2017 maps.

## 3. Results

### 3.1. Uncertainty as a function of plot size and AGB

For plots <0.3 ha, the inter-quartile range of SD was 30–151 Mg ha<sup>-1</sup> for measurement error and 16–44 Mg ha<sup>-1</sup> for sampling error (Fig. 3). The SD of measurement error decreased sharply for larger plots and increased slightly as AGB increased. The sampling errors were also affected by map pixel size. For instance, GEOCARBON (1 km pixels) had consistently higher SD than Baccini (30 m pixels). Plots that were temporally adjusted for epoch 2000 (Baccini) and 2017 (CCI Biomass) exhibited slightly higher temporal SDs than for the other two maps because of the longer periods that had to be bridged between the map epoch and plot inventory date (Table S1), but the temporal error had the lowest SD of the three error sources. On average among the maps, the estimated SD of each error was 93.9 Mg ha<sup>-1</sup> (measurement), 51.6 Mg ha<sup>-1</sup> (sampling) and 24.6 Mg ha<sup>-1</sup> (temporal), equivalent to 73, 22 and 5% of the total variance, respectively. Map SDs exhibited very different magnitudes, but high map AGB values were always associated with higher map SD.

### 3.2. Plot-to-map comparison

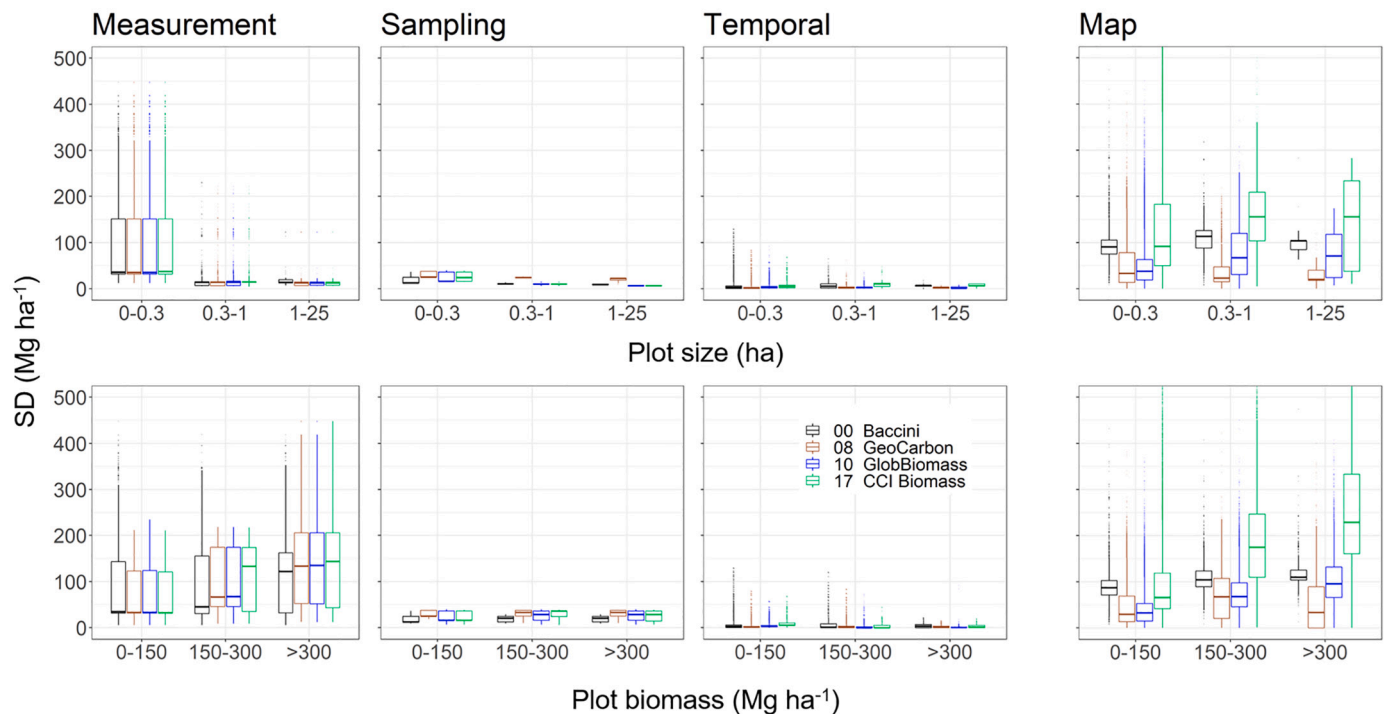
Comparisons between map and plot estimates of AGB at 0.1° in Fig. 4 and Table 2 show that, while all the maps overestimate lower biomass and underestimate higher biomass, the transition point from over- to underestimation differs. For example, the Baccini map starts to underestimate AGB at around 150 Mg ha<sup>-1</sup>, whereas for the other maps this occurs around 200 Mg ha<sup>-1</sup>. For all maps, the largest underestimation of AGB was in the highest biomass bin. GEOCARBON has the smallest underestimation for values of AGB >300 Mg ha<sup>-1</sup>, while the GlobBiomass and CCI Biomass maps have the lowest absolute MD over the range 50–200 Mg ha<sup>-1</sup>. The inter-quartile ranges of the binned AGB map values do not overlap with the 1:1 line below 50 Mg ha<sup>-1</sup> and above 300 Mg ha<sup>-1</sup>, indicating bias dominates random errors for those bins.

The map error conformity (EC) in Table 2 shows that overall, GEOCARBON is optimistic about map precision whilst CCI Biomass is pessimistic. The precision estimates for the Baccini and GlobBiomass maps tend to be optimistic for low AGB and pessimistic for high AGB.

### 3.3. Spatial bias

The fraction of the variance of the bias explained by the RF models ranged from 24 to 36% over the AGB maps. Map AGB and tree cover were the most important predictors in the models (Fig. S3 and Table S4). The proportion of 0.1° grid cells for which the 95% CI of the bias prediction included 0 Mg ha<sup>-1</sup> ranged from 4 to 15% across the AGB maps, so most grid cells were corrected for bias.





**Fig. 3.** Boxplots of plot-level SD for measurement error, sampling error and temporal adjustment as a function of plot size and AGB, color-coded and labelled according to the AGB map they are compared with; the horizontal bar indicates the median and the boxes show the inter-quartile range. Also depicted are boxplots of map SD as a function of plot size and AGB.

Systematic underestimation is particularly obvious over the tropical rainforests of the Amazon, the Congo basin and insular Southeast Asia (Fig. 5), but also occurs in parts of other climatic zones, particularly the sub-tropical zone of China and southeast Australia, the temperate zone of Spain and USA, and the boreal zone of Russia and Canada. There is no obvious common spatial pattern of overestimation among the maps. The GEOCARBON map has the smallest underestimation in the tropics, followed by the CCI Biomass map. The GlobBiomass map exhibits the largest overestimation in the temperate regions, while the Baccini map has the largest overestimation in the boreal zone.

### 3.4. Estimates of total pan-tropical AGB

The default and bias-adjusted maps, and the FRA all show a decrease in the total pan-tropical AGB from 2000 to 2017 (Table 3), but with important differences. The bias-adjusted maps give higher total AGB than the default maps for all years since they correct for map underestimation in high AGB regions. The 95% CIs for the estimated total AGBs take account of the map-specific spatial correlation in AGB map errors (see convoluted variograms in Fig. S5, which exhibit sills from 0.11–0.38 and nugget = 0, and the modified SDs in 0.1° grid cells in Fig. S6). The differences between the three estimates decrease from 2000 to 2017, though the bias-adjusted estimate is still 12.4 Petagrams (Pg) greater than the FRA estimate in 2017.

## 4. Discussion

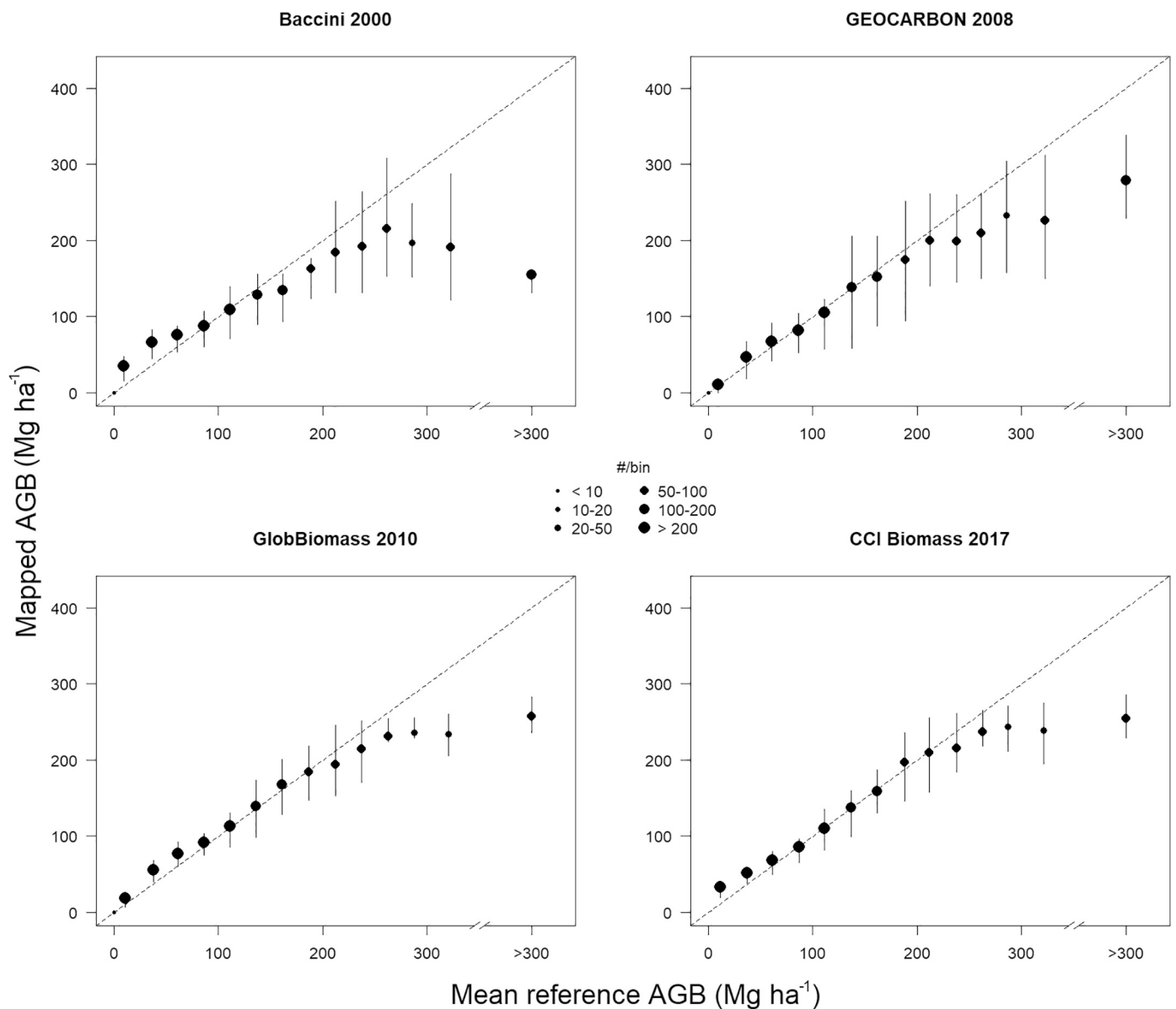
### 4.1. Uncertainty drivers in plot-to-map comparison

The largest contributor to plot SD (73%) was measurement error (which includes allometric model errors), which is much larger for smaller plots and increases slightly with higher biomass. Most of the plot data come from small plots (mostly NFIs) in which there are fewer trees. Combined with geolocation errors causing trees near the plot boundary to be included or excluded, this produces large uncertainties (Réjou-

Méchain et al., 2019). Moreover, around 34% of the plots smaller than 0.3 ha are extra-tropical, and may be subject to erroneous uncertainty estimates due to the use of the wrong allometric model (Chen et al., 2015). Generic allometric models similar to Chave et al. (2014) for non-tropical forests are not yet developed. The uncertainty of measurement error is probably best estimated by the data producers themselves and its provision would be a useful addition to the data quality requirements for current and upcoming plot data (see Section 2.2).

Sampling errors in the range 16–44 Mg ha<sup>-1</sup> were estimated for small plots when map pixel size and forest cover were taken into account (see Section 2.2). They tend to be amplified when small plots are compared with large map pixels (Réjou-Méchain et al., 2014), as observed in the GEOCARBON results (1 km pixel size, Fig. 3), which has the highest SD for this error. This occurs partly because forest structure tends to be non-uniform over short distances (Chave et al., 2004; Saatchi et al., 2011a), especially on slopes (Réjou-Méchain et al., 2014) and when there are very big trees (de Castilho et al., 2006). However, the influence of forest structure variability tends to decrease as plot size increases, e.g., Saatchi et al. (2011a) found that the CV of sampling error was 80% smaller for 1 ha plots than for 0.01 ha plots in the tropics. As well as plot size, the number and spatial spread of plots inside a map pixel affects sampling errors (Næsset et al., 2015; Bradford et al., 2010). Several randomly placed samples may be better at capturing the mean AGB of a forest region than a single large sample covering the same total area (Nascimento and Laurance, 2002). LiDAR data may also be useful as reference data since LiDAR-based AGB maps typically cover substantial areas and hence provide samples covering the whole range of AGB in a landscape. This will prevent biases arising from preferential sampling, which is often implicit in the selection of research plots (Duncanson et al., 2021). Whenever available, these maps would be preferred over the research plots themselves as reference data.

Uncertainty from plot temporal adjustment was largest for the AGB maps of 2000 and 2017 because of the longer periods between the map epoch and plot inventory date (Table S1), but was a small contributor to total plot uncertainty. Improvements might be possible by stratifying the



**Fig. 4.** Map estimates of AGB aggregated to  $0.1^\circ$  against mean plot AGB within  $0.1^\circ$  grid cells for all four AGB maps. The number of grid cells are: Baccini = 6561; GEOCARBON = 6521; GlobBiomass = 6201; and CCI Biomass = 2612 originating from plot datasets  $\pm 10$  years apart than the map epoch (see Section 2.2 and Table S2). Each circle represents an AGB bin and its size denotes the number of grid cells in the bin, while the whiskers correspond to the 25<sup>th</sup> and 75<sup>th</sup> percentile range of the map AGB.

growth data to capture the growth of disturbed forests under different management intensities and natural disturbances (Requena Suarez et al., 2019). Such estimates could be complemented by forest age maps (Besnard et al., 2021).

Map SDs exhibited very different magnitudes as a result of the use of different data, different AGB estimation methods and different ways of propagating uncertainty (Section 2.2). However, high map AGB values are always associated with higher map SD (though not necessarily a higher CV) (Rodríguez-Veiga et al., 2017). If plots are used for calibration, such as in the Baccini map, large measurement errors may contribute a significant part of the total error propagated to the map (Réjou-Méchain et al., 2017). AGB maps produced without in situ calibration avoid such errors, but are vulnerable to model uncertainties (Santoro et al., 2011). For example, the SDs for GlobBiomass and CCI Biomass arise mainly from limitations in the model converting backscatter to GSV and uncertainty in its parameters (Santoro et al., 2021).

All AGB maps tended to overestimate low AGB and underestimate

high AGB. Numerous studies, summarized in Réjou-Méchain et al. (2019) and Duncanson et al. (2021), show similar effects, as a result of several intertwined factors. Both optical and radar sensors are known to saturate for higher values of AGB (Zhao et al., 2016; Rodríguez-Veiga et al., 2019), which inevitably leads to underestimation of AGB. However, the factors causing map overestimation for lower AGB are more complex. For radar-based maps, it is largely driven by imperfect allometric models (Santoro, 2020) and the influence of soil moisture and roughness (Santoro et al., 2011). For maps derived using optical data, it is possibly a result of fitting saturated EO data to plot data in the regression models, particularly if plots are limited to certain forest conditions but used to calibrate models predicting AGB globally (Rodríguez-Veiga et al., 2019). The smaller map bias in mid-range AGB values is expected for regression methods, which often force the mean of the training data and predictions to be equal. Similar behaviour for the model-based approaches used by GlobBiomass and CCI Biomass may reflect higher sensitivity of radar backscatter to AGB and reduced soil

**Table 2**

Summary statistics of the plot-to-map comparison: mean plot and map AGB, MD (bias), RMSD, and mean variances of plot and map AGB errors per biomass bin at 0.1°. The EC column lists whether the SD layer provided with the map is optimistic (OP) or pessimistic (PE) about map precision.

AGB bin	AGB <sub>PG</sub>	AGB <sub>mG</sub>	MD	RMSD	SD <sub>PG</sub> <sup>2</sup>	SD <sub>mG</sub> <sup>2</sup>	EC
	-----	-----	- Mg ha <sup>-1</sup> -	-----			
<b>Baccini</b>							
0–50	19	46	27	38	13,325	6348	OP
50–100	69	80	11	45	27,435	11,208	OP
100–150	121	117	-4	50	17,645	12,188	OP
150–200	173	146	-27	70	12,846	12,976	OP
200–250	225	188	-37	103	11,849	14,709	PE
250–300	270	209	-61	109	11,283	15,750	PE
300–400	337	192	-146	174	10,009	14,982	PE
>400	793	147	-647	761	33,181	15,161	PE
<b>GEOCARBON</b>							
0–50	23	17	-5	26	11,771	2221	OP
50–100	70	65	-5	42	24,989	8727	OP
100–150	121	122	1	80	20,325	9356	OP
150–200	173	183	10	93	14,528	6764	OP
200–250	225	190	-34	84	15,285	7334	OP
250–300	272	232	-41	90	12,224	3158	OP
300–400	338	287	-51	105	20,454	2436	OP
>400	680	269	-411	511	72,987	131	OP
<b>GlobBiomass</b>							
0–50	23	35	12	22	11,373	1112	OP
50–100	70	83	12	29	24,674	3236	OP
100–150	120	123	3	47	19,805	6188	OP
150–200	171	174	3	55	14,042	9731	OP
200–250	225	205	-20	59	14,644	12,843	PE
250–300	273	233	-41	61	10,135	15,076	PE
300–400	337	238	-99	110	23,175	16,465	OP
>400	700	263	-437	520	72,682	21,374	PE
<b>CCI Biomass</b>							
0–50	22	40	19	29	6845	13,304	PE
50–100	72	75	3	31	21,218	59,323	PE
100–150	122	122	-1	50	19,363	74,641	PE
150–200	172	174	2	57	14,824	167,434	PE
200–250	224	212	-12	61	16,401	211,949	PE
250–300	274	240	-34	58	9347	135,659	PE
300–400	339	245	-93	107	19,736	84,973	PE
>400	680	253	-426	503	71,469	227,242	PE

effects in this AGB range. GEOCARBON has the closest match to plot data for AGB >200 Mg ha<sup>-1</sup>, possibly because its bias removal method used a plot dataset in the tropics which may overlap with our plot data. However, this effect is not easy to quantify as here the comparison is with plot data after the harmonization process (Section 2.2).

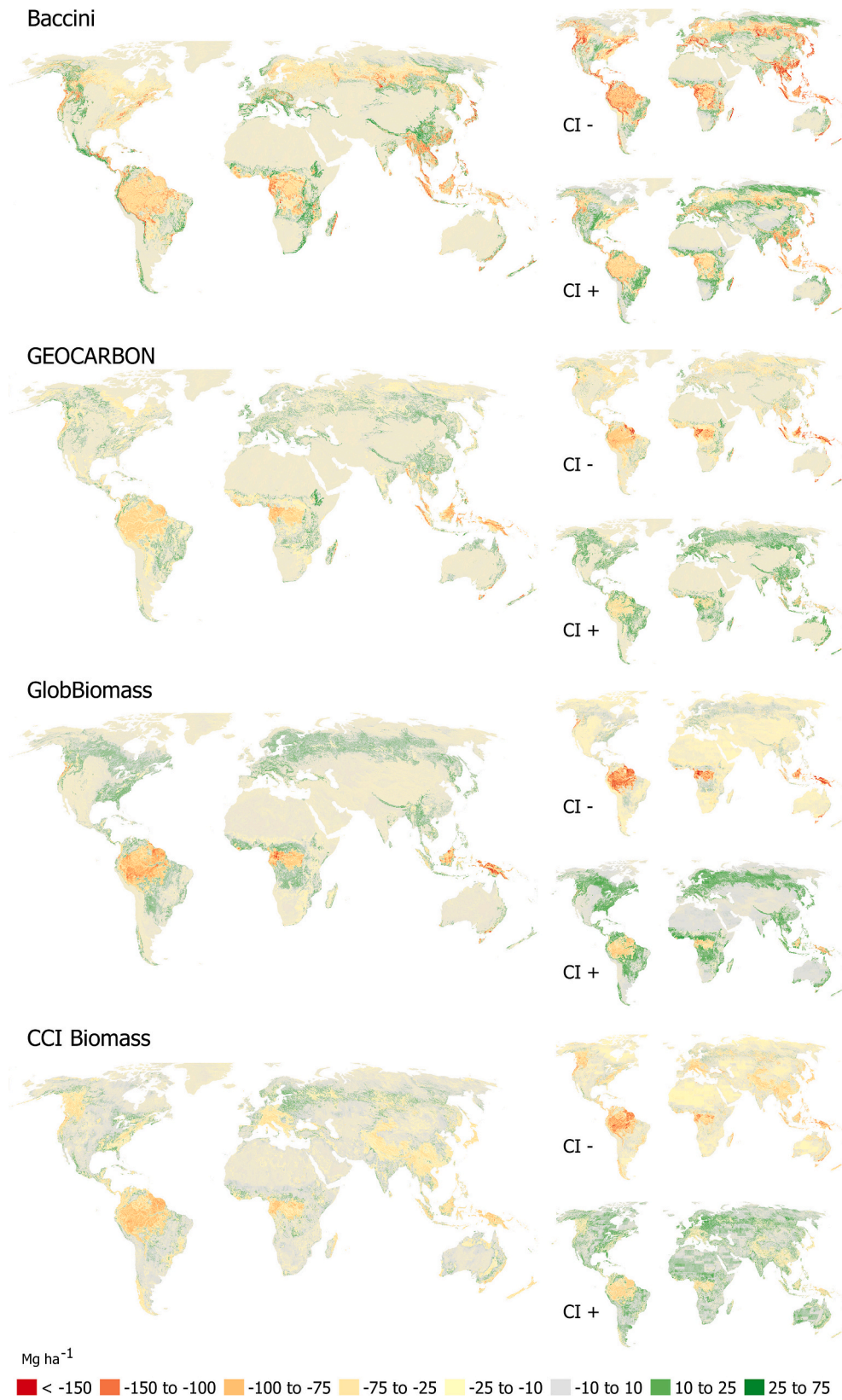
#### 4.2. Bias and precision modelling

The model-based approach to predicting bias at 0.1° yields broad-scale spatial patterns of map over- and underestimation that exhibit significant similarities between the four maps (Fig. 5), and are also similar to patterns observed in Avitabile et al. (2016) for two global maps and Tsutsumida et al. (2019) for regional maps. Error hotspots, mainly of map underestimation, stand out in the regions of agreement and disagreement between the maps (Fig. 6). Such hotspots occur regardless of the methods used to produce the maps (Xu et al., 2016) and whenever there are sufficient reference data to compare with the maps (Avitabile et al., 2016; Rodríguez-Veiga et al., 2019). However, insufficient and unrepresentative reference data may cause incorrect estimation of map bias and hence erroneous map correction (Avitabile et al., 2016). We attempted to counteract this effect by reducing the plot-based estimates of AGB at 0.1° when non-forest areas exist in grid cells (Section 2.2). The plots used here cover all major ecological zones, though some zones are under-sampled, and are subject to large measurement errors. These plot errors are accounted for when creating the training data, as explained in Section 2.5. For example, training data within areas with high map underestimation, such as the Tasmanian forests, were mostly

small plots, so received lower weights and hence had a lower chance to become training data. A similar situation is observed in Sweden.

The Variable Importance Measure (Table S4) and Partial Dependency Plots (PDP; Fig. S3) indicate that the predicted bias is most sensitive to map AGB and tree cover, but this is also clear from Fig. 5. In particular, the PDPs show that map underestimation of at least 60 Mg ha<sup>-1</sup> mostly occurs when AGB >300 Mg ha<sup>-1</sup> and canopy cover is in the range 60–90%. Furthermore, bias in the radar-based maps, e.g., CCI Biomass, is sensitive to steep northeasterly slopes because of the look geometry of the sensor and incorrect pre-processing of the SAR data for moderate and steep terrain (Santoro and Cartus, 2019). These observations may help in developing improved AGB estimators that combat such deficiencies.

Spatial autocorrelation analysis revealed spatial dependency in errors up to lags of 50–104 km, depending on the map (Fig. S5). Short-range autocorrelation of residuals (<5 km) comes from localized forest structure (Guitet et al., 2015; Mascaro et al., 2014). However, longer-range autocorrelation is found from our plot data, which are mostly from NFIs that are configured to sample the forest over short distances (e.g., using nested plots) while also representing regional to country scales. Similar effects were found in other large-scale studies (Baccini et al., 2012; Avitabile et al., 2011; Ploton et al., 2020b). Large scale AGB mapping often uses environmental variables, e.g., topography (Baccini et al., 2012) and climate (Hernández-Stefanoni et al., 2020), as predictors, and these exhibit long-range spatial dependency that may transfer into the AGB error structure (Ploton et al., 2020b). This may also affect the two radar-based maps as the GSV and biomass expansion

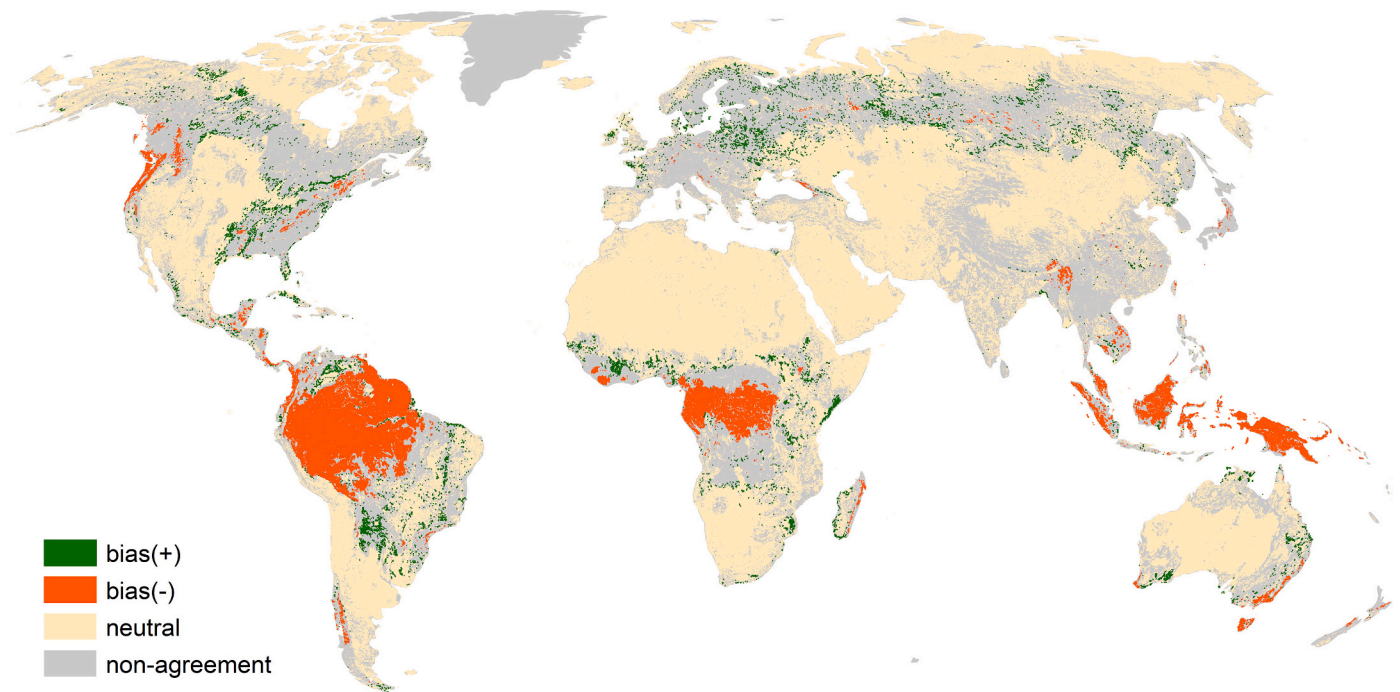


**Fig. 5.** The predicted bias of global biomass maps in 0.1° grid cells and their 95% CI: lower (CI-) and upper (CI+). There is a 95% chance that the bias lies within the (CI-, CI+) interval.

**Table 3**

Pantropical forest AGB with 95% CI estimated from the default and bias-adjusted maps. Also shown are estimates derived from FRA data for these three years. The forest areas of map-based AGB estimates are set as the closest possible area to the FRA forest area based on a 0.1° tree cover threshold. The analysis includes all pantropical countries but without the pantropical portions of China and Australia.

Year	AGB (Pg)			Forest area (mil. ha)		95% CI (Pg)	
	Default	This study	FRA	Map-based	FRA	Default	This study
2000	354.47	406.38	302.69	1939.28	1998.20	5.83	0.88
2010	279.35	314.20	290.97	1928.98	1907.77	7.93	5.09
2017	277.60	296.20	283.78	1928.98	1849.50	14.10	1.57



**Fig. 6.** Map of grid cells where the biases in the four AGB maps shown in Fig. 5 at 0.1° for 2000, 2008, 2010 and 2017 agree and disagree; overestimation or bias(+) in all maps, i.e.,  $10 < \text{bias} < 50$ ; underestimation or bias(-) in all maps, i.e.,  $-150 < \text{bias} < -10$ ; neutral in all maps, i.e.,  $-10 < \text{bias} < 10$ . All numerical values are in  $\text{Mg ha}^{-1}$ . All other areas are in the non-agreement class.

factor used for AGB estimation are mapped with climatic variables as inputs (Santoro et al., 2021; Santoro, 2020). The variograms also indicate that the map SD layers need to be improved. In the variogram models shown in Fig. S5, the residuals are scaled by the map SD, so the SDs are incorrect when the sills deviate from 1 (see “default variogram” in Fig. S5). Further evidence for the need to adjust the SDs is given by the map error conformity measures (Table 2). Overly pessimistic estimated SD for the CCI Biomass 2017 map has already been corrected in its updated version (Santoro, 2020).

#### 4.3. Strengths and limitations of the framework

A core GCOS principle is that estimates of AGB should as far as possible be unbiased. This study provides a comprehensive framework for meeting this principle by estimating the bias and uncertainty in AGB maps (Fig. 1). It can be adapted to the requirements of different map users or producers (Herold et al., 2019) but requires estimates of uncertainty in both plots and maps, and careful vetting of the quality and suitability of plot data. Open source tools estimating plot uncertainty (e. g., BIOMASS and PlotToMap) are of great value for this. BIOMASS has not been widely tested other than in tropical regions, though is currently being tested in extra-tropical forests. We also provide an interactive online tool for users of the framework and open source software (which can be readily updated) that offers more flexibility in pre-processing plot data and comparing plot and map AGB estimates (<https://github.com/a>

[rmanaraza/PlotToMap](#)). Countries with constraints on sharing plot data could use such tools while maintaining national data privacy.

Bias-adjusted maps of AGB and its uncertainty in 0.1° or larger grid cells can be used in climate and carbon modelling (see Fig. S4). They can also provide estimates of national AGB over time, and its uncertainty, to assist carbon accounting based on NFI sampling (McRoberts and Tomppo, 2007) and to enhance local AGB estimates (Næsset et al., 2020; Le Toan et al., 2011). In addition, they can provide baseline AGB values when more frequent estimation of carbon emissions is desirable (Csillik and Asner, 2020).

Information on local to regional map biases and their dependence on terrain and forest variables (Table S4, Fig. S3) may help to trace the factors causing such bias. Moreover, map producers should find the analyses of spatial error structure from variograms and map error conformity informative. For more precise maps, our variograms that account for measurement errors (i.e., with zero nugget) and our optimized method of SD aggregation can be adapted.

The application of the uncertainty framework to estimating pantropical AGB showed a persistent temporal decline in stocks and increasing agreement between the map-based estimates and the estimate from FRA over time. This may reflect both increasing quality of forest AGB data from countries (Nesha et al., 2021) and improving map accuracy, and suggests that we can have more confidence in more recent estimates of pantropical forest AGB. However, the large disagreements between the map-based and FRA estimates of AGB in 2000 indicate that

long-term AGB change estimation based on differences in AGB maps is likely to be unreliable. Further analysis of AGB change from these estimates will be addressed in a follow-up study.

The limitations in the uncertainty framework reported here pertain to the plot dataset, plot selection bias, methodological limitations and data requirement issues. Most plot data with tree-level measurements lack tree height, so we estimated height with the Weibull model, but this model may not apply in all biomes, such as woodlands and mangrove forests. We also lacked tree-level data in non-tropical regions, so estimates of measurement errors for plots in these regions are subject to revision. The fact that the plot dataset in the boreal regions is concentrated in two countries may also limit global application of the framework.

Plot selection bias will arise if the plots inside a  $0.1^\circ$  grid cell do not provide a random sample of the AGB within the cell. For example, if they are selected to lie within high AGB areas within a diverse forest landscape, their weighted average would overestimate the AGB at  $0.1^\circ$ . Research plots, which make up 4% of the total dataset but 24% in the tropics, are particularly prone to this effect. To analyze how this might affect our analysis we examined the variability of tree cover at grid scale and plot locations, and treated this as a proxy for AGB variation (Avitabile and Camia, 2018). This analysis yielded a set of grid cells without preferential samples (referred to as strict filtering of the plot dataset; see Fig. S1 for the specific steps). Assessment of the GlobBiomass map at pantropical and global scales against the filtered plot dataset (based on the tree cover for the same epoch (Hansen et al., 2013)) gave results differing only slightly from use of the current dataset (see Fig. S1). This suggests that preferential sampling had little effect on our analysis. Possible reasons for this are that almost the same number of grid cells were excluded under the current approach and the strict filter (56% and 57% in the pantropics, respectively), and that many of the grid cells selected were the same under both approaches, particularly in tropical high AGB areas e.g., 77% of the tropical grid cells where GlobBiomass  $>250 \text{ Mg ha}^{-1}$  used in the current approach were also used after strict filtering (Fig. S2). Though we used several grid cells containing research plots, these are mainly plots with area  $>0.60 \text{ ha}$  located in forests that visually exhibit homogeneous canopy cover. Nonetheless, the bias seen in the corrected maps when AGB  $>300 \text{ Mg ha}^{-1}$  may be exacerbated by the lack of representative plot data, even if the minimum number of plots inside grid cells is increased. This AGB range was only covered by research plots in Tasmanian and Amazonian forests, and most of them were excluded from the bias modelling since the weighted bootstrapping limits the use of small plots with high AGB.

A number of possibilities exist for improving the bias modelling. Using additional covariates, such as AGB texture and canopy height, may help (Xu et al., 2021). Additional plot data, preferably large plots, are desirable both to compensate for those with high variance and, more importantly, to increase spatial coverage since a large training dataset is needed to capture local AGB error patterns (Xu et al., 2016). Selected values from local AGB maps, if they exist, can be added to the training data in under-sampled areas (McRoberts et al., 2019b). We also plan to assess different cross-validations of the bias model. In addition, the use of harmonized plots at coarser scales, e.g., 1 km from forestry concessions (Ploton et al., 2020a) and 25 km from NFIs (Menlove and Healey, 2020) are also options, given their extensive forest coverage.

## 5. Conclusions

1. The comprehensive uncertainty framework developed in this paper can correct existing AGB maps for bias, within the limitations of the bias model. Such maps, with their associated SDs at coarser scales, are particularly useful in the context of climate and carbon cycle modelling. The analysis of spatial bias and models of spatial error correlation provide valuable information to both map users and producers on local to regional map errors.

2. The estimates of bias in the AGB maps exhibit spatial patterns that largely reflect AGB itself. The bias models would benefit from additional plot data and local AGB maps within poorly represented regions i.e., LiDAR-based maps will be preferred over plot data whenever available.
3. The spatial uncertainty modelling was hindered by plot AGB uncertainty arising principally from measurement and sampling errors, which tends to be especially large in regions where only small plots are available. It would be helpful if NFIs included some larger plots (e.g.,  $>1 \text{ ha}$ ) to serve multiple purposes, including the assessment of global AGB maps.
4. Both map-based and FRA estimates of pantropical AGB show a decline from 2000 to 2017, and become increasingly close with time, despite the datasets and methods used being quite different for different map epochs. However, there is still a difference of at least 6.9 Pg between the map-based and FRA estimate in 2017.

## Data repository

Access to the bias-adjusted maps and associated SDs:  
<https://doi.org/10.6084/m9.figshare.18393689.v1>.

## Credit author statement

Conceptualization: Araza, de Bruin and Herold;  
 Methodology and Software: Araza and de Bruin;  
 Formal analysis: Araza, de Bruin, Herold, Quegan;  
 Data curation, investigation, writing review & editing: de Bruin, Quegan, Labriere, Rodriguez-Veiga, Avitabile and Santoro;  
 Data curation, investigation: Mitchard, Ryan, Phillips, Wilcock, Verbeeck, Carreiras, Hein, Schelhaas, Pascagaza, Bispo, Laurin, Vieilledent, Slik, Wijaya, Lewis, Morel, Liang, Sukhdeo, Schepaschenko, Cavlovic, Gilani and Lucas;  
 Resources: Herold and Hein;  
 Writing original draft and Visualization: Araza;  
 Proofreading: Quegan.

## Declaration of Competing Interest

The authors declare that they have no known competing financial interests or personal relationships that could have appeared to influence the work reported in this paper.

## Acknowledgements

This study has been partly supported by the IFBN and CCI Biomass projects funded by ESA. We thank Michael Keller and Alessandro Baccini for their data provision, and Maxime Réjou-Méchain and Philippe Ciais for their technical suggestions. Plot data from Russia was processed within the framework of the state assignment of the Center for Forest Ecology and Productivity of the Russian Academy of Sciences (no.-18-118052590019-7), and was financially supported by the Russian Science Foundation (no. 19-77-30015). Shaun Quegan and Joao Carreiras were supported by the UK Natural Environment Research Council (NERC), through agreement # PR140015 between NERC and the National Centre for Earth Observation. We thank the VERIFY project supported by the European Commission, Horizon 2020 Framework Programme (no. 776810); and the project “Transparent monitoring in practice: Supporting post-Paris land use sector mitigation” funded by the German Federal Ministry for the Environment, Nature Conservation and Nuclear Safety (BMU).

## Appendix A. Supplementary data

Supplementary data to this article can be found online at <https://doi.org/10.1016/j.rse.2022.112917>.

## References

- Anacioco, K.P., Gorio, J.A.L., Padsico, M.R.S., Lumbres, R.I.C., Doyog, N.D., Lee, Y.J., 2018. Fitting and evaluation of height-diameter models for alnus japonica in la trinidad, benguet, philippines. *J. Mt. Sci.* 15, 2422–2432. <https://doi.org/10.1007/s11629-018-4866-9>.
- Avitabile, V., Camia, A., 2018. An assessment of forest biomass maps in europe using harmonized national statistics and inventory plots. *For. Ecol. Manag.* 409, 489–498. <https://doi.org/10.1016/j.foreco.2017.11.047>.
- Avitabile, V., Herold, M., Henry, M., Schmulius, C., 2011. Mapping biomass with remote sensing: a comparison of methods for the case study of uganda. *Carb. Bal. Manag.* 6 <https://doi.org/10.1186/1750-0680-6-7>.
- Avitabile, V., Herold, M., Heuvelink, G.B.M., Lewis, S.L., Phillips, O.L., Asner, G.P., Armston, J., Ashton, P.S., Banin, L., Bayol, N., Berry, N.J., Boeckx, P., de Jong, B.H. J., DeVries, B., Girardin, C.A.J., Kearsley, E., Lindsell, J.A., Lopez-Gonzalez, G., Lucas, R., Malhi, Y., Morel, A., Mitchard, E.T.A., Nagy, L., Qie, L., Quinones, M.J., Ryan, C.M., Ferry, S.J.W., Sunderland, T., Laurin, G.V., Gatti, R.C., Valentini, R., Verbeek, H., Wijaya, A., Willcock, S., 2016. An integrated pan-tropical biomass map using multiple reference datasets. *Glob. Chang. Biol.* 22, 1406–1420. <https://doi.org/10.1111/gcb.13139>.
- Avitabile, V., Herold, M., Lewis, S., Phillips, O., Aguilar-Amuchastegui, N., Asner, G., Brienren, R., DeVries, B., Gazolla Gatti, R., Feldpausch, T., Girardin, C., de Jong, B., Kearsley, E., Klop, E., Lin, X., Lindsell, J., Lopez-Gonzalez, G., Lucas, R., Malhi, Y., Morel, A., Mitchard, E., Pandey, D., Piao, S., Ryan, C., Sales, M., Santoro, M., Vaglio Laurin, G., Valentini, R., Verbeek, H., Wijaya, A., Willcock, S., 2014. Comparative Analysis and Fusion for Improved Global Biomass Mapping, pp. 251–252. <https://colloque6.inra.fr/gv2m/Oral-Sessions>.
- Baccini, A., Friedl, M., Woodcock, C., Zhu, Z., 2007. Scaling field data to calibrate and validate moderate spatial resolution remote sensing models. *Photogramm. Eng. Remote. Sens.* 73, 945–954. <https://doi.org/10.14358/pers.73.8.945>.
- Baccini, A., Goetz, S.J., Walker, W.S., Laporte, N.T., Sun, M., Sulla-Menashe, D., Hackler, J., Beck, P.S.A., Dubayah, R., Friedl, M.A., Samanta, S., Houghton, R.A., 2012. Estimated carbon dioxide emissions from tropical deforestation improved by carbon-density maps. *Nat. Clim. Chang.* 2, 182–185. <https://doi.org/10.1038/nclimate1354>.
- Baccini, A., Walker, W., Carvalho, L., Farina, M., Sulla-Menashe, D., Houghton, R.A., 2017. Tropical forests are a net carbon source based on aboveground measurements of gain and loss. *Science* 358, 230–234. <https://doi.org/10.1126/science.aam5962>.
- Balk, D., Yetman, G., 2004. *The Global Distribution of Population: Evaluating the Gains in Resolution Refinement*. Center for International Earth Science Information Network (CIESIN), Columbia University, New York.
- Besnard, S., Koirala, S., Santoro, M., Weber, U., Nelson, J., Günter, J., Hérault, B., Kassi, J., N'Guessan, A., Neigh, C., Poulter, B., Zhang, T., Carvalhais, N., 2021. Mapping global forest age from forest inventories, biomass and climate data. *Earth Syst. Sci. Data* 13, 4881–4896. <https://doi.org/10.5194/essd-13-4881-2021>.
- Bradford, J.B., Weishampel, P., Smith, M.L., Kolk, R., Birdsey, R.A., Ollinger, S.V., Ryan, M.G., 2010. Carbon pools and fluxes in small temperate forest landscapes: Variability and implications for sampling design. *For. Ecol. Manag.* 259, 1245–1254. <https://doi.org/10.1016/j.foreco.2009.04.009>.
- Breiman, L., 2001. *Mach. Learn.* 45, 5–32. <https://doi.org/10.1023/a:1010933404324>.
- Buendia, E., Tanabe, K., Kranjc, A., Baasansuren, J., Fukuda, M., Ngarize, S., Osako, A., Pyrozhenko, Y., Shermanau, P., Federici, S., 2019. Refinement to the 2006 IPCC guidelines for National Greenhouse Gas Inventories. IPCC, Geneva, Switzerland.
- Burt, A., Calders, K., Cuni-Sanchez, A., Gómez-Dans, J., Lewis, P., Lewis, S.L., Malhi, Y., Phillips, O.L., Disney, M., 2020. Assessment of bias in pan-tropical biomass predictions. *Front. For. Glob. Chang.* 3 <https://doi.org/10.3389/ffgc.2020.00012>.
- Chave, J., Condit, R., Aguilar, S., Hernandez, A., Lao, S., Perez, R., 2004. Error propagation and scaling for tropical forest biomass estimates. *Philos. Trans. R. Soc. Lond. B Biol. Sci.* 359, 409–420. <https://doi.org/10.1098/rstb.2003.1425>.
- Chave, J., Coomes, D., Jansen, S., Lewis, S.L., Swenson, N.G., Zanne, A.E., 2009. Towards a worldwide wood economics spectrum. *Ecol. Lett.* 12, 351–366. <https://doi.org/10.1111/j.1461-0248.2009.01285.x>.
- Chave, J., Réjou-Méchain, M., Búrquez, A., Chidumayo, E., Colgan, M.S., Delitti, W.B., Duque, A., Eid, T., Fearnside, P.M., Goodman, R.C., Henry, M., Martínez-Yrizar, A., Mugasha, W.A., Muller-Landau, H.C., Mencuccini, M., Nelson, B.W., Ngomanda, A., Nogueira, E.M., Ortiz-Malavassi, E., Péliissier, R., Ploton, P., Ryan, C.M., Saldarriaga, J.G., Vieilledent, G., 2014. Improved allometric models to estimate the aboveground biomass of tropical trees. *Glob. Chang. Biol.* 20, 3177–3190. <https://doi.org/10.1111/gcb.12629>.
- Chave, J., Davies, S.J., Phillips, O.L., Lewis, S.L., Sist, P., Schepaschenko, D., Armston, J., Baker, T.R., Coomes, D., Disney, M., Duncanson, L., Hérault, B., Labrière, N., Meyer, V., Réjou-Méchain, M., Scipal, K., Saatchi, S., 2019. Ground data are essential for biomass remote sensing missions. *Surv. Geophys.* 40, 863–880. <https://doi.org/10.1007/s10712-019-09528-w>.
- Chen, Q., Laurin, G.V., Valentini, R., 2015. Uncertainty of remotely sensed aboveground biomass over an african tropical forest: propagating errors from trees to plots to pixels. *Remote Sens. Environ.* 160, 134–143. <https://doi.org/10.1016/j.rse.2015.01.009>.
- Christensen, W.F., 2011. Filtered kriging for spatial data with heterogeneous measurement error variances. *Biometrics* 67, 947–957. <https://doi.org/10.1111/j.1541-0420.2011.01563.x>.
- Csillik, O., Asner, G.P., 2020. Near-real time aboveground carbon emissions in peru. *PLoS One* 15, e0241418. <https://doi.org/10.1371/journal.pone.0241418>.
- de Bruin, S., Herold, M., Araza, A., 2019. *Product Validation Plan*. Technical Report. European Space Agency.
- de Castilho, C.V., Magnusson, W.E., de Araújo, R.N.O., Luizão, R.C., Luizão, F.J., Lima, A. P., Higuchi, N., 2006. Variation in aboveground tree live biomass in a central amazonian forest: effects of soil and topography. *For. Ecol. Manag.* 234, 85–96. <https://doi.org/10.1016/j.foreco.2006.06.024>.
- Dieck, R.H., 2007. *Measurement Uncertainty: Methods and Applications*. ISA.
- Dubayah, R., Blair, J.B., Goetz, S., Fatoyinbo, L., Hansen, M., Healey, S., Hofton, M., Hurr, G., Kellner, J., Luthcke, S., Armston, J., Tang, H., Duncanson, L., Hancock, S., Jantz, P., Marselis, S., Patterson, P.L., Qi, W., Silva, C., 2020. The global ecosystem dynamics investigation: high-resolution laser ranging of the earth's forests and topography. *Sci. Remote Sens.* 1, 100002 <https://doi.org/10.1016/j.srs.2020.100002>.
- Duncanson, L., Armston, J., Disney, M., Avitabile, V., Barbier, N., Calders, K., Carter, S., Chave, J., Herold, M., Crowther, T.W., Falkowski, M., Kellner, J.R., Labrière, N., Lucas, R., MacBean, N., McRoberts, R.E., Meyer, V., Nasset, E., Nickeson, J.E., Paul, K.I., Phillips, O.L., Réjou-Méchain, M., Román, M., Roxburgh, S., Saatchi, S., Schepaschenko, D., Scipal, K., Siqueira, P.R., Whitehurst, A., Williams, M., 2021. *Global Aboveground Biomass Product Validation Best Practice Protocol*.
- Fazakas, Z., Nilsson, M., Olsson, H., 1999. Regional forest biomass and wood volume estimation using satellite data and ancillary data. *Agric. For. Meteorol.* 98–99, 417–425. [https://doi.org/10.1016/S0168-1923\(99\)00112-4](https://doi.org/10.1016/S0168-1923(99)00112-4).
- Feldpausch, T.R., Lloyd, J., Lewis, S.L., Brienren, R.J.W., Gloor, M., Mendoza, A.M., Lopez-Gonzalez, G., Banin, L., Salim, L., Salim, K.A., Affum-Baffoe, K., Alexiades, M., Almeida, S., Amaral, I., Andrade, A., Aragão, L.E.O.C., Murakami, A.A., Arets, E.J.M. M., Arroyo, L.C., Baker, T.R., Bánki, O.S., Berry, N.J., Cardozo, N., Chave, J., Comiskey, J.A., Alvarez, E., de Oliveira, A., Fiore, A.D., Djagbletey, G., Dominguez, T.F., Erwin, T.L., Fearnside, P.M., França, M.B., Freitas, M.A., Higuchi, N., Iida, Y., Jiménez, E., Kassim, A.R., Killeen, T.J., Laurance, W.F., Lovett, J.C., Malhi, Y., Marimon, B.S., Marimon-Junior, B.H., Lenza, E., Marshall, A. R., Mendoza, C., Metcalfe, D.J., Mitchard, E.T.A., Neill, D.A., Nelson, B.W., Nilus, R., Nogueira, E.M., Parada, A., Peh, K.S.H., Cruz, A.P., Penuela, M.C., Pitman, N.C.A., Prieto, A., Quesada, C.A., Ramirez, F., Ramirez-Anguilo, H., Reitsma, J.M., Rudas, A., Saiz, G., Salomão, R.P., Schwarz, M., Silva, N., Silva-Espejo, J.E., Silveira, M., Sonké, B., Stropp, J., Taedoung, H.E., Tan, S., ter Steege, H., Terborgh, J., Torello-Raventos, M., van der Heijden, G.M.F., Vázquez, R., Vilanova, E., Vos, V.A., White, L., Willcock, S., Woell, H., 2012. Tree height integrated into pantropical forest biomass estimates. *Biogeosciences* 9, 3381–3403. <https://doi.org/10.5194/bg-9-3381-2012>.
- GCOS, 2016. *The Global Observing System for Climate: Implementation Needs gc0s-200*. GTOPO30-global, U, 2002. 30-Arc Second Elevation Data. US geological survey. National Mapping Division, EROS Data Center. Available from: <http://edcdaac.usgs.gov/gtopo30/gtopo30.html>.
- Guitet, S., Hérault, B., Molto, Q., Brunaux, O., Coutron, P., 2015. Spatial structure of above-ground biomass limits accuracy of carbon mapping in rainforest but large scale forest inventories can help to overcome. *PLoS One* 10, e0138456. <https://doi.org/10.1371/journal.pone.0138456>.
- Hansen, M.C., Potapov, P.V., Moore, R., Hancher, M., Turubanova, S.A., Tyukavina, A., Thau, D., Stehman, S.V., Goetz, S.J., Loveland, T.R., Kommareddy, A., Egorov, A., Chini, L., Justice, C.O., Townshend, J.R.G., 2013. High-resolution global maps of 21st-century forest cover change. *Science* 342, 850–853. <https://doi.org/10.1126/science.1244693>.
- Harmon, M.E., Fasth, B., Halpern, C.B., Lutz, J.A., 2015. Uncertainty analysis: an evaluation metric for synthesis science. *Ecosphere* 6, 1–12. <https://doi.org/10.1890/es14-00235.1>.
- Hernández-Stefanoni, J.L., Castillo-Santiago, M.Á., Mas, J.F., Wheeler, C.E., Andres-Mauricio, J., Tun-Dzul, F., George-Chacón, S.P., Reyes-Palomeque, G., Castellanos-Basto, B., Vaca, R., Dupuy, J.M., 2020. Improving aboveground biomass maps of tropical dry forests by integrating LiDAR, ALOS PALSAR, climate and field data. *Carb. Bal. Manag.* 15 <https://doi.org/10.1186/s13021-020-00151-6>.
- Herold, M., Carter, S., Avitabile, V., Espejo, A.B., Jonckheere, I., Lucas, R., McRoberts, R. E., Nasset, E., Nightingale, J., Petersen, R., Reiche, J., Romijn, E., Rosenqvist, A., Rozendaal, D.M.A., Seifert, F.M., Sanz, M.J., Sy, V.D., 2019. The role and need for space-based forest biomass-related measurements in environmental management and policy. *Surv. Geophys.* 40, 757–778. <https://doi.org/10.1007/s10712-019-09510-6>.
- Iremonger, S., Gerrand, A., 2011. *Global Ecological Zones for fao Forest Reporting*, 2010. Unpublished report. FAO, Rome.
- Jarvis, A., Reuter, H.I., Nelson, A., Guevara, E., et al., 2008. *Hole-Filled srtm for the Globe Version 4*. Available from the CGIAR-CSI SRTM 90m Database (<http://srtm.csi.cgiar.org>), 15, pp. 25–54.
- Kellogg, K., Hoffman, P., Standley, S., Shaffer, S., Rosen, P., Edelstein, W., Dunn, C., Baker, C., Barela, P., Shen, Y., Guerrero, A.M., Xaypraseuth, P., Sagi, V.R., Sreekantha, C.V., Harinath, N., Kumar, R., Bhan, R., Sarma, C.V.H.S., 2020. NASA-ISRO synthetic aperture radar (NISAR) mission. In: 2020 IEEE Aerospace Conference. IEEE. <https://doi.org/10.1109/aero47225.2020.9172638>.
- Kyriakidis, P.C., 2004. A geostatistical framework for area-to-point spatial interpolation. *Geogr. Anal.* 36, 259–289. <https://doi.org/10.1111/j.1538-4632.2004.tb01135.x>.
- Labrière, N., Tao, S., Chave, J., Scipal, K., Toan, T.L., Abernethy, K., Alonso, A., Barbier, N., Bissengou, P., Casal, T., Davies, S.J., Ferraz, A., Hérault, B., Jaouen, G., Jeffery, K.J., Kenfack, D., Korte, L., Lewis, S.L., Malhi, Y., Memiaghe, H.R., Poulsen, J.R., Réjou-Méchain, M., Villard, L., Vincent, G., White, L.J.T., Saatchi, S., 2018. *italian situ/italic reference datasets from the TropiSAR and AfriSAR campaigns in support of upcoming spaceborne biomass missions*. IEEE J. Select. Top. Appl. Earth Observ. Remote Sens. 11, 3617–3627. <https://doi.org/10.1109/jstars.2018.2851606>.

- Langner, A., Achard, F., Grassi, G., 2014. Can recent pan-tropical biomass maps be used to derive alternative tier 1 values for reporting REDD activities under UNFCCC? *Environ. Res. Lett.* 9, 124008 <https://doi.org/10.1088/1748-9326/9/12/124008>.
- Le Toan, T., Quegan, S., Davidson, M., Balzter, H., Paillou, P., Papathanassiou, K., Plummer, S., Rocca, F., Saatchi, S., Shugart, H., Ulander, L., 2011. The BIOMASS mission: mapping global forest biomass to better understand the terrestrial carbon cycle. *Remote Sens. Environ.* 115, 2850–2860. <https://doi.org/10.1016/j.rse.2011.03.020>.
- Liang, J., Crowther, T.W., Picard, N., Wiser, S., Zhou, M., Alberti, G., Schulze, E.D., McGuire, A.D., Bozzato, F., Pretzsch, H., de Miguel, S., Paquette, A., Hérault, B., Scherer-Lorenzen, M., Barrett, C.B., Glick, H.B., Hengeveld, G.M., Nabuurs, G.J., Pfautsch, S., Viana, H., Vibrans, A.C., Ammer, C., Schall, P., Verbyla, D., Tchebakova, N., Fischer, M., Watson, J.V., Chen, H.Y.H., Lei, X., Schelhaas, M.J., Lu, H., Gianelle, D., Parfenova, E.L., Salas, C., Lee, E., Lee, B., Kim, H.S., Bruehlheide, H., Coomes, D.A., Piotta, D., Sunderland, T., Schmid, B., Gourlet-Fleury, S., Sonké, B., Tavana, R., Zhu, J., Brandl, S., Vayreda, J., Kitahara, F., Searle, E.B., Neldner, V.J., Ngugi, M.R., Baraloto, C., Frizzera, L., Balazy, R., Oleksyn, J., Zawila-Niedzwiecki, T., Bouriaud, O., Bussotti, F., Finér, L., Jaroszewicz, B., Jucker, T., Valladares, F., Jagodzinski, A.M., Peri, P.L., Gonmadje, C., Marthy, W., O'Brien, T., Martin, E.H., Marshall, A.R., Rovero, F., Bitariho, R., Niklaus, P.A., Alvarez-Loayza, P., Chamuya, N., Valencia, R., Mortier, F., Wortel, V., Engone-Obiang, N.L., Ferreira, L.V., Odeke, D.E., Vasquez, R. M., Lewis, S.L., Reich, P.B., 2016. Positive biodiversity-productivity relationship predominant in global forests. *Science* 354.
- Mahanta, D.J., Borah, M., 2014. Parameter Estimation of Weibull Growth Models in Forestry. *Parameters* 1, p. 5.
- Mascaro, J., Asner, G.P., Knapp, D.E., Kennedy-Bowdoin, T., Martin, R.E., Anderson, C., Higgins, M., Chadwick, K.D., 2014. A tale of two “forests”: Random forest machine learning aids tropical forest carbon mapping. *PLoS One* 9, e85993. <https://doi.org/10.1371/journal.pone.0085993>.
- McRoberts, R.E., Tomppo, E.O., 2007. Remote sensing support for national forest inventories. *Remote Sens. Environ.* 110, 412–419. <https://doi.org/10.1016/j.rse.2006.09.034>.
- McRoberts, R.E., Næsset, E., Gobakken, T., 2015. The effects of temporal differences between map and ground data on map-assisted estimates of forest area and biomass. *Ann. For. Sci.* 73, 839–847. <https://doi.org/10.1007/s13595-015-0485-6>.
- McRoberts, R.E., Chen, Q., Domke, G.M., Ståhl, G., Saarela, S., Westfall, J.A., 2016. Hybrid estimators for mean aboveground carbon per unit area. *For. Ecol. Manag.* 378, 44–56. <https://doi.org/10.1016/j.foreco.2016.07.007>.
- McRoberts, R.E., Næsset, E., Liknes, G.C., Chen, Q., Walters, B.F., Saatchi, S., Herold, M., 2019a. Using a finer resolution biomass map to assess the accuracy of a regional, map-based estimate of forest biomass. *Surv. Geophys.* 40, 1001–1015. <https://doi.org/10.1007/s10712-019-09507-1>.
- McRoberts, R.E., Næsset, E., Saatchi, S., Liknes, G.C., Walters, B.F., Chen, Q., 2019b. Local validation of global biomass maps. *Int. J. Appl. Earth Obs. Geoinf.* 83, 101931 <https://doi.org/10.1016/j.jag.2019.101931>.
- McRoberts, R.E., Næsset, E., Sannier, C., Stehman, S.V., Tomppo, E.O., 2020. Remote sensing support for the gain-loss approach for greenhouse gas inventories. *Remote Sens.* 12, 1891. <https://doi.org/10.3390/rs12111891>.
- Menlove, J., Healey, S.P., 2020. A comprehensive forest biomass dataset for the USA allows customized validation of remotely sensed biomass estimates. *Remote Sens.* 12, 4141. <https://doi.org/10.3390/rs12244141>.
- Meyer, H., Reudenbach, C., Wöllauer, S., Nauss, T., 2019. Importance of spatial predictor variable selection in machine learning applications – moving from data reproduction to spatial prediction. *Ecol. Model.* 411, 108815 <https://doi.org/10.1016/j.ecolmodel.2019.108815>.
- Mitchard, E.T., Saatchi, S.S., Baccini, A., Asner, G.P., Goetz, S.J., Harris, N.L., Brown, S., 2013. Uncertainty in the spatial distribution of tropical forest biomass: a comparison of pan-tropical maps. *Carb. Bal. Manag.* 8 <https://doi.org/10.1186/1750-0680-8-10>.
- Næsset, E., Bollandsås, O.M., Gobakken, T., Solberg, S., McRoberts, R.E., 2015. The effects of field plot size on model-assisted estimation of aboveground biomass change using multitemporal interferometric SAR and airborne laser scanning data. *Remote Sens. Environ.* 168, 252–264. <https://doi.org/10.1016/j.rse.2015.07.002>.
- Næsset, E., McRoberts, R.E., Pekkarinen, A., Saatchi, S., Santoro, M., Trier, Ø.D., Zahabu, E., Gobakken, T., 2020. Use of local and global maps of forest canopy height and aboveground biomass to enhance local estimates of biomass in miombo woodlands in tanzania. *Int. J. Appl. Earth Obs. Geoinf.* 102138. <https://doi.org/10.1016/j.jag.2020.102138>.
- Nascimento, H.E., Laurance, W.F., 2002. Total aboveground biomass in central amazonian rainforests: a landscape-scale study. *For. Ecol. Manag.* 168, 311–321. [https://doi.org/10.1016/s0378-1127\(01\)00749-6](https://doi.org/10.1016/s0378-1127(01)00749-6).
- Nesha, M.K., Herold, M., Sy, V.D., Duchelle, A.E., Martius, C., Branthomme, A., Garzuglia, M., Jonsson, O., Pekkarinen, A., 2021. An assessment of data sources, data quality and changes in national forest monitoring capacities in the global forest resources assessment 2005–2020. *Environ. Res. Lett.* <https://doi.org/10.1088/1748-9326/abd81b>.
- Ploton, P., Mortier, F., Barbier, N., Cornu, G., Réjou-Méchain, M., Rossi, V., Alonso, A., Bastin, J.F., Bayol, N., Bénédet, F., Bissignou, P., Chuyong, G., Demarquez, B., Doucet, J.L., Droissart, V., Kamdem, N.G., Kenfack, D., Memiaghe, H., Moses, L., Sonké, B., Texier, N., Thomas, D., Zebaze, D., Péllissier, R., Gourlet-Fleury, S., 2020a. A map of african humid tropical forest aboveground biomass derived from management inventories. *Sci. Data* 7. <https://doi.org/10.1038/s41597-020-0561-0>.
- Ploton, P., Mortier, F., Réjou-Méchain, M., Barbier, N., Picard, N., Rossi, V., Dormann, C., Cornu, G., Viennois, G., Bayol, N., Lyapustin, A., Gourlet-Fleury, S., Péllissier, R., 2020b. Spatial validation reveals poor predictive performance of large-scale ecological mapping models. *Nat. Commun.* 11 <https://doi.org/10.1038/s41467-020-18321-y>.
- Quegan, S., Clais, P., 2018. User Requirement Document. Technical Report. European Space Agency.
- Quegan, S., Toan, T.L., Chave, J., Dall, J., Exbrayat, J.F., Minh, D.H.T., Lomas, M., D'Alessandro, M.M., Paillou, P., Papathanassiou, K., Rocca, F., Saatchi, S., Scipal, K., Shugart, H., Smallman, T.L., Soja, M.J., Tebaldini, S., Ulander, L., Villard, L., Williams, M., 2019. The european space agency BIOMASS mission: measuring forest above-ground biomass from space. *Remote Sens. Environ.* 227, 44–60. <https://doi.org/10.1016/j.rse.2019.03.032>.
- Réjou-Méchain, M., Muller-Landau, H.C., Detto, M., Thomas, S.C., Toan, T.L., Saatchi, S., Barreto-Silva, J.S., Bourg, N.A., Bunyavejchewin, S., Butt, N., Brockelman, W.Y., Cao, M., Cárdenas, D., Chiang, J.M., Chuyong, G.B., Clay, K., Condit, R., Dattaraja, H.S., Davies, S.J., Duque, A., Esufali, S., Ewango, C., Fernando, R.H.S., Fletcher, C.D., Gunatilleke, I.A.U.N., Hao, Z., Harms, K.E., Hart, T.B., Hérault, B., Howe, R.W., Hubbell, S.P., Johnson, D.J., Kenfack, D., Larson, A.J., Lin, L., Lin, Y., Lutz, J.A., Makana, J.R., Malhi, Y., Marthews, T.R., McEwan, R.W., McMahon, S.M., McShea, W.J., Muscarella, R., Nathalang, A., Noor, N.S.M., Nyth, C.J., Oliveira, A. A., Phillips, R.P., Pongpattananurak, N., PUNCHI-Manage, R., Salim, R., Schurman, J., Sukumar, R., Suresh, H.S., Suwanvecho, U., Thomas, D.W., Thompson, J., Uriarte, M., Valencia, R., Vicentini, A., Wolf, A.T., Yap, S., Yuan, Z., Zartman, C.E., Zimmerman, J.K., Chave, J., 2014. Local spatial structure of forest biomass and its consequences for remote sensing of carbon stocks. *Biogeosciences* 11, 6827–6840. <https://doi.org/10.5194/bg-11-6827-2014>.
- Réjou-Méchain, M., Tanguy, A., Piponioc, C., Chave, J., Hérault, B., 2017. biomass: an r package for estimating above-ground biomass and its uncertainty in tropical forests. *Methods Ecol. Evol.* 8, 1163–1167. <https://doi.org/10.1111/2041-210x.12753>.
- Réjou-Méchain, M., Barbier, N., Coutron, P., Ploton, P., Vincent, G., Herold, M., Mermoz, S., Saatchi, S., Chave, J., de Boissieu, F., Féret, J.B., Takoudjou, S.M., Péllissier, R., 2019. Upscaling forest biomass from field to satellite measurements: sources of errors and ways to reduce them. *Surv. Geophys.* 40, 881–911. <https://doi.org/10.1007/s10712-019-09532-0>.
- Requena Suarez, D., Rozendaal, D.M.A., Sy, V.D., Phillips, O.L., Alvarez-Dávila, E., Anderson-Teixeira, K., Araujo-Murakami, A., Arroyo, L., Baker, T.R., Bongers, F., Brienen, R.J.W., Carter, S., Cook-Patton, S.C., Feldpausch, T.R., Griscom, B.W., Harris, N., Hérault, B., Coronado, E.N.H., Leavitt, S.M., Lewis, S.L., Marimon, B.S., Mendoza, A.M., N'dja, J.K., Nguessan, A.E., Poorter, L., Qie, L., Rutishauser, E., Sist, P., Sonké, B., Sullivan, M.J.P., Vilanova, E., Wang, M.M.H., Martius, C., Herold, M., 2019. Estimating aboveground net biomass change for tropical and subtropical forests: refinement of IPCC default rates using forest plot data. *Glob. Chang. Biol.* 25, 3609–3624. <https://doi.org/10.1111/gcb.14767>.
- Rodríguez-Veiga, P., Saatchi, S., Tansey, K., Balzter, H., 2016. Magnitude, spatial distribution and uncertainty of forest biomass stocks in mexico. *Remote Sens. Environ.* 183, 265–281. <https://doi.org/10.1016/j.rse.2016.06.004>.
- Rodríguez-Veiga, P., Wheeler, J., Louis, V., Tansey, K., Balzter, H., 2017. Quantifying forest biomass carbon stocks from space. *Curr. For. Rep.* 3, 1–18. <https://doi.org/10.1007/s40725-017-0052-5>.
- Rodríguez-Veiga, P., Quegan, S., Carreiras, J., Persson, H.J., Fransson, J.E., Hoschilo, A., Ziolkowski, D., Stereńczak, K., Lohberger, S., Stängel, M., Berninger, A., Siegert, F., Avitabile, V., Herold, M., Mermoz, S., Bouvet, A., Toan, T.L., Carvalhais, N., Santoro, M., Cartus, O., Rauste, Y., Mathieu, R., Asner, G.P., Thiel, C., Pathe, C., Schmulius, C., Seifert, F.M., Tansey, K., Balzter, H., 2019. Forest biomass retrieval approaches from earth observation in different biomes. *Int. J. Appl. Earth Obs. Geoinf.* 77, 53–68. <https://doi.org/10.1016/j.jag.2018.12.008>.
- Saatchi, S., Marlier, M., Chazdon, R.L., Clark, D.B., Russell, A.E., 2011a. Impact of spatial variability of tropical forest structure on radar estimation of aboveground biomass. *Remote Sens. Environ.* 115, 2836–2849. <https://doi.org/10.1016/j.rse.2010.07.015>.
- Saatchi, S.S., Harris, N.L., Brown, S., Lefsky, M., Mitchard, E.T.A., Salas, W., Zutta, B.R., Buermann, W., Lewis, S.L., Hagen, S., Petrova, S., White, L., Silman, M., Morel, A., 2011b. Benchmark map of forest carbon stocks in tropical regions across three continents. *Proc. Natl. Acad. Sci.* 108, 9899–9904. <https://doi.org/10.1073/pnas.1019576108>.
- Santoro, M., 2020. CCI Biomass Product User Guide v2. Technical Report. European Space Agency.
- Santoro, M., Cartus, O., 2019. Esa Biomass Climate Change Initiative (biomass\_cci): Global Datasets of Forest Above-Ground Biomass for the Year 2017. v1. <https://doi.org/10.5285/BEDC59F37C9545C981A839EB552E4084>.
- Santoro, M., Beer, C., Cartus, O., Schmulius, C., Shvidenko, A., McCallum, I., Wegmüller, U., Wiesmann, A., 2011. Retrieval of growing stock volume in boreal forest using hyper-temporal series of envisat ASAR ScanSAR backscatter measurements. *Remote Sens. Environ.* 115, 490–507. <https://doi.org/10.1016/j.rse.2010.09.018>.
- Santoro, M., Beaudoin, A., Beer, C., Cartus, O., Fransson, J.E., Hall, R.J., Pathe, C., Schmulius, C., Schepaschenko, D., Shvidenko, A., Thurner, M., Wegmüller, U., 2015. Forest growing stock volume of the northern hemisphere: spatially explicit estimates for 2010 derived from envisat ASAR. *Remote Sens. Environ.* 168, 316–334. <https://doi.org/10.1016/j.rse.2015.07.005>.
- Santoro, M., Cartus, O., Carvalhais, N., Rozendaal, D., Avitabile, V., Araza, A., de Bruin, S., Herold, M., Quegan, S., Veiga, P.R., Balzter, H., Carreiras, J., Schepaschenko, D., Korets, M., Shimada, M., Itoh, T., Martínez, Á.M., Cavlovic, J., Gatti, R.C., da Conceição Bispo, P., Dewnath, N., Labrière, N., Liang, J., Lindsell, J., Mitchard, E.T.A., Morel, A., Pascagaza, A.M.P., Ryan, C.M., Slik, F., Laurin, G.V., Verbeeck, H., Wijaya, A., Willcock, S., 2021. The Global Forest Above-Ground Biomass Pool for 2010 Estimated from High-Resolution Satellite Observations. *Earth System Science Data* 13 (8), 3927–3950. <https://doi.org/10.5194/essd-13-3927-2021>.



- Schepaschenko, D., Chave, J., Phillips, O.L., Lewis, S.L., Davies, S.J., Réjou-Méchain, M., Sist, P., Scipal, K., Perger, C., Herault, B., Labrière, N., Hofhansl, F., Affum-Baffoe, K., Aleinikov, A., Alonso, A., Amani, C., Araujo-Murakami, A., Armston, J., Arroyo, L., Ascarrunz, N., Azevedo, C., Baker, T., Balazy, R., Bedeau, C., Berry, N., Bilous, A.M., Bilous, S.Y., Bissengou, P., Blanc, L., Bobkova, K.S., Braslavskaya, T., Brienen, R., Burslem, D.F.R.P., Condit, R., Cuni-Sanchez, A., Danilina, D., del Castillo Torres, D., Derroire, G., Descroix, L., Sotta, E.D., d'Oliveira, M.V.N., Dresel, C., Erwin, T., Evdokimenko, M.D., Falck, J., Feldpausch, T.R., Foli, E.G., Foster, R., Fritz, S., Garcia-Abril, A.D., Gornov, A., Gornova, M., Gothard-Bassébé, E., Goulet-Fleury, S., Guedes, M., Hamer, K.C., Susanty, F.H., Higuchi, N., Coronado, E.N.H., Hubau, W., Hubbell, S., Ilstedt, U., Ivanov, V.V., Kanashiro, M., Karlsson, A., Karminov, V.N., Killeen, T., Koffi, J.C.K., Konovalova, M., Kraxner, F., Krejza, J., Krisnawati, H., Krivobokov, L.V., Kuznetsov, M.A., Lakyda, I., Lakyda, P.I., Licona, J.C., Lucas, R.M., Lukina, N., Lussetti, D., Malhi, Y., Manzanera, J.A., Marimon, B., Junior, B.H.M., Martinez, R.V., Martynenko, O.V., Matsala, M., Matyashuk, R.K., Mazzei, L., Memiaghe, H., Mendoza, C., Mendoza, A.M., Moroziuk, O.V., Mukhortova, L., Musa, S., Nazimova, D.I., Okuda, T., Oliveira, L.C., Ontikov, P.V., Osipov, A.F., Pietsch, S., Playfair, M., Poulsen, J., Radchenko, V.G., Rodney, K., Rozak, A.H., Ruschel, A., Rutishauser, E., See, L., Shchepashchenko, M., Shevchenko, N., Shvidenko, A., Silveira, M., Singh, J., Sonké, B., Souza, C., Stereńczak, K., Stonozhenko, L., Sullivan, M.J.P., Szatniewska, J., Taedoum, H., ter Steege, H., Tikhonova, E., Toledo, M., Trefilova, O.V., Valbuena, R., Gamarra, L.V., Vasiliev, S., Vedrova, E.F., Verhovets, S.V., Vidal, E., Vladimirova, N.A., Vleminckx, J., Vos, V.A., Vozmitel, F.K., Wanek, W., West, T.A.P., Woell, H., Woods, J.T., Wortel, V., Yamada, T., Hajar, Z.S.N., Zo-Bi, I.C., 2019. The forest observation system, building a global reference dataset for remote sensing of forest biomass. *Sci. Data* 6. <https://doi.org/10.1038/s41597-019-0196-1>.
- Schimel, D., Pavlick, R., Fisher, J.B., Asner, G.P., Saatchi, S., Townsend, P., Miller, C., Frankenberg, C., Hibbard, K., Cox, P., 2015. Observing terrestrial ecosystems and the carbon cycle from space. *Glob. Chang. Biol.* 21, 1762–1776. <https://doi.org/10.1111/gcb.12822>.
- Tsutsunuma, N., Rodríguez-Veiga, P., Harris, P., Balzter, H., Comber, A., 2019. Investigating spatial error structures in continuous raster data. *Int. J. Appl. Earth Obs. Geoinf.* 74, 259–268. <https://doi.org/10.1016/j.jag.2018.09.020>.
- UN-FAO, 2010. Global Forest Resources Assessment 2010: Main report. Technical Report.
- UN-FAO, 2020. Global Forest Resources Assessment 2020: Main report. Technical Report.
- Wager, S., Hastie, T., Efron, B., 2014. Confidence intervals for random forests: the jackknife and the infinitesimal jackknife. *J. Mach. Learn. Res.* 15, 1625–1651.
- Whittaker, R., 1975. Whittaker Biome Diagram.
- Wright, M.N., Ziegler, A., 2017. ranger: a fast implementation of random forests for high dimensional data in c and r. *J. Stat. Softw.* 77 <https://doi.org/10.18637/jss.v077.i01>.
- Xu, L., Saatchi, S.S., Yang, Y., Yu, Y., White, L., 2016. Performance of non-parametric algorithms for spatial mapping of tropical forest structure. *Carb. Bal. Manag.* 11 <https://doi.org/10.1186/s13021-016-0062-9>.
- Xu, L., Saatchi, S.S., Yang, Y., Yu, Y., Pongratz, J., Bloom, A.A., Bowman, K., Worden, J., Liu, J., Yin, Y., Domke, G., McRoberts, R.E., Woodall, C., Nabuurs, G.J., de Miguel, S., Keller, M., Harris, N., Maxwell, S., Schimel, D., 2021. Changes in global terrestrial live biomass over the 21st century. *Sci. Adv.* 7 <https://doi.org/10.1126/sciadv.abe9829> eabe9829.
- Zhang, Y., Liang, S., 2020. Fusion of multiple gridded biomass datasets for generating a global forest aboveground biomass map. *Remote Sens.* 12, 2559. <https://doi.org/10.3390/rs12162559>.
- Zhang, X., Duan, A., Zhang, J., Xiang, C., 2014. Estimating tree height-diameter models with the bayesian method. *Sci. World J.* 2014, 1–9. <https://doi.org/10.1155/2014/683691>.
- Zhang, Q., Liang, Y., He, H., 2018. Tree-lists estimation for chinese boreal forests by integrating weibull diameter distributions with MODIS-based forest attributes from kNN imputation. *Forests* 9, 758. <https://doi.org/10.3390/f9120758>.
- Zhang, Y., Liang, S., Yang, L., 2019. A review of regional and global gridded forest biomass datasets. *Remote Sens.* 11, 2744. <https://doi.org/10.3390/rs11232744>.
- Zhao, P., Lu, D., Wang, G., Wu, C., Huang, Y., Yu, S., 2016. Examining spectral reflectance saturation in landsat imagery and corresponding solutions to improve forest aboveground biomass estimation. *Remote Sens.* 8, 469. <https://doi.org/10.3390/rs8060469>.