



HAL
open science

First ovules integument: what roles?

Brigitte Meyer-Berthaud

► **To cite this version:**

Brigitte Meyer-Berthaud. First ovules integument: what roles?. National Science Review, 2022, 9 (4), 10.1093/nsr/nwab224 . hal-03632112

HAL Id: hal-03632112

<https://hal.inrae.fr/hal-03632112>

Submitted on 6 Apr 2022

HAL is a multi-disciplinary open access archive for the deposit and dissemination of scientific research documents, whether they are published or not. The documents may come from teaching and research institutions in France or abroad, or from public or private research centers.

L'archive ouverte pluridisciplinaire **HAL**, est destinée au dépôt et à la diffusion de documents scientifiques de niveau recherche, publiés ou non, émanant des établissements d'enseignement et de recherche français ou étrangers, des laboratoires publics ou privés.



Distributed under a Creative Commons Attribution 4.0 International License

COMMENTARY
EARTH SCIENCES

First ovules integument: what roles?

The Famennian is a period of increased taxonomic diversity for the first representatives of the major plant groups, especially the spermatophytes (i.e., the seed plants) that, today, represent the most abundant and diversified plant group on Earth [1, 2]. Early spermatophytes evolved a unique ovule-centered reproductive syndrome that allowed them to germinate and grow rapidly in disturbed habitats and, secondarily, to colonize dry habitats unfavorable to the reproduction of their free-sporing predecessors [3, 4] (Fig. 1). In these ovulate organisms, the female gametophyte grows and produces gametes inside the indehiscent megasporangium (nucellus) that differentiates a pollen chamber retaining the pollen grains in its apical part. An integument encloses the nucellus. Like the *Runcaria* protovule that preceded them by 20 million years, Famennian ovules were all surrounded by a cupule, except perhaps *Spermolithus* and *Warsteinia* [5, 6, 7]. The latter, however, have been found isolated and may also have had a cupule remaining on the plant that produced them.

The selection pressures that contributed to the evolution of such complex structures are still poorly understood and are the subject of speculation that seems intuitively relevant but has been little tested so far. It is thus widely admitted that the cupule and integument enhanced pollination and protection of the nucellus, but only the former function was investigated using experiments [3, 8].

With *Guazia*, Wang et al. [9] document the earliest evidence of a naked ovule, i.e., lacking a cupule, a feature that would become widespread in Carboniferous spermatophytes. They describe the integument of *Guazia* as consisting of four fused lobes that completely surround the nucellus and form lateral extensions interpreted as wings. *Guazia* would be the second Famennian ovule after *Warsteinia* to have evolved an integument favoring a third function, that of wind-dispersal [7].

With specimens up to 20.5 mm long and 5.6 mm wide, the size of *Guazia* exceeds that of all other Famennian ovules recorded so far [3, 4, 9, 10, 11]. Isn't it surprising that the most massive ovule of that time evolved wings and was, therefore, the best adapted to wind dispersal, along with the much smaller *Warsteinia*? Were the 'wings' of *Guazia*, which are arched inwards rather than outwards and biconvex in transverse section rather than thin and membranous like those of *Warsteinia*, effective devices for promoting air buoyancy? To answer these questions, tests conducted on the dispersal potential of Permian seeds [12] could be conducted similarly on *Guazia*, perhaps using realistic models produced by 3D printers.

The cupules of early spermatophytes are borne at the tips of fertile fronds (compound leaves) which, when known, differ from the vegetative fronds by the absence of pinnules (photosynthetic appendages). The cupules may have represented the photosynthetic organs of the fertile fronds, contributing to a fourth function, that of the nourishment of the female gametophyte. In *Guazia*, which lacked a cupule, the integument could have taken on this function and been a significant contributor to the development of these large ovules.

Brigitte Meyer-Berthaud

Botanique et Modélisation de l'Architecture des Plantes et des Végétations, Université de Montpellier, CNRS, France

E-mail : meyerberthaud@cirad.fr

orcid.org/0000-0002-0308-4065

Acknowledgements

I thank Anne-Laure Decombeix for her comments and corrections on a draft of this paper

References

1. Capel EC, Cleal J, Gerrienne P et al. *Palaeogeog, Palaeoclim, Palaeoecol* 2021; **566**: 110170.
2. Cascales-Miñana B. *Rev Palaeobot Palynol* 2016; **227**: 19-27.
3. Rothwell GW and Scheckler SE..In: Beck CB (ed). *Biology of ancestral gymnosperms. Origin and evolution of gymnosperms*. New York, Columbia University Press, 1988, 85-134
4. Cressler III WL, Prestianni C and LePage BA. *Int J Coal Geol* 2010; **83**: 91-102.
5. Gerrienne P, Meyer-Berthaud B, Fairon-Demaret M et al. *Science* 2004; **306**: 856-858.
6. Chaloner WG, Hill AJ and Lacey WS. *Nature* 1977; **265**: 233-235.
7. Rowe NP. *Palaeontology* 1997; **40**: 575-595.
8. Niklas KJ. *Am J Bot* 1981; **68**: 635-650.
9. Wang D-M, Liu L, Zhou Y et al. *Natl Sci Rev* 2021;
10. Prestianni C, Hilton J and Cressler W. *Int J Plant Sci* 2013; **174**: 832-851.
11. Wang D-M, Basinger JF, Pu H et al. *Proc R Soc B* 2015; **282**: 20151613.
12. Stevenson RA, Evangelista D and Looy CV. *Paleobiology* 2015; **41**: 205-225.

ORIGINAL UNEDITED MANUSCRIPT

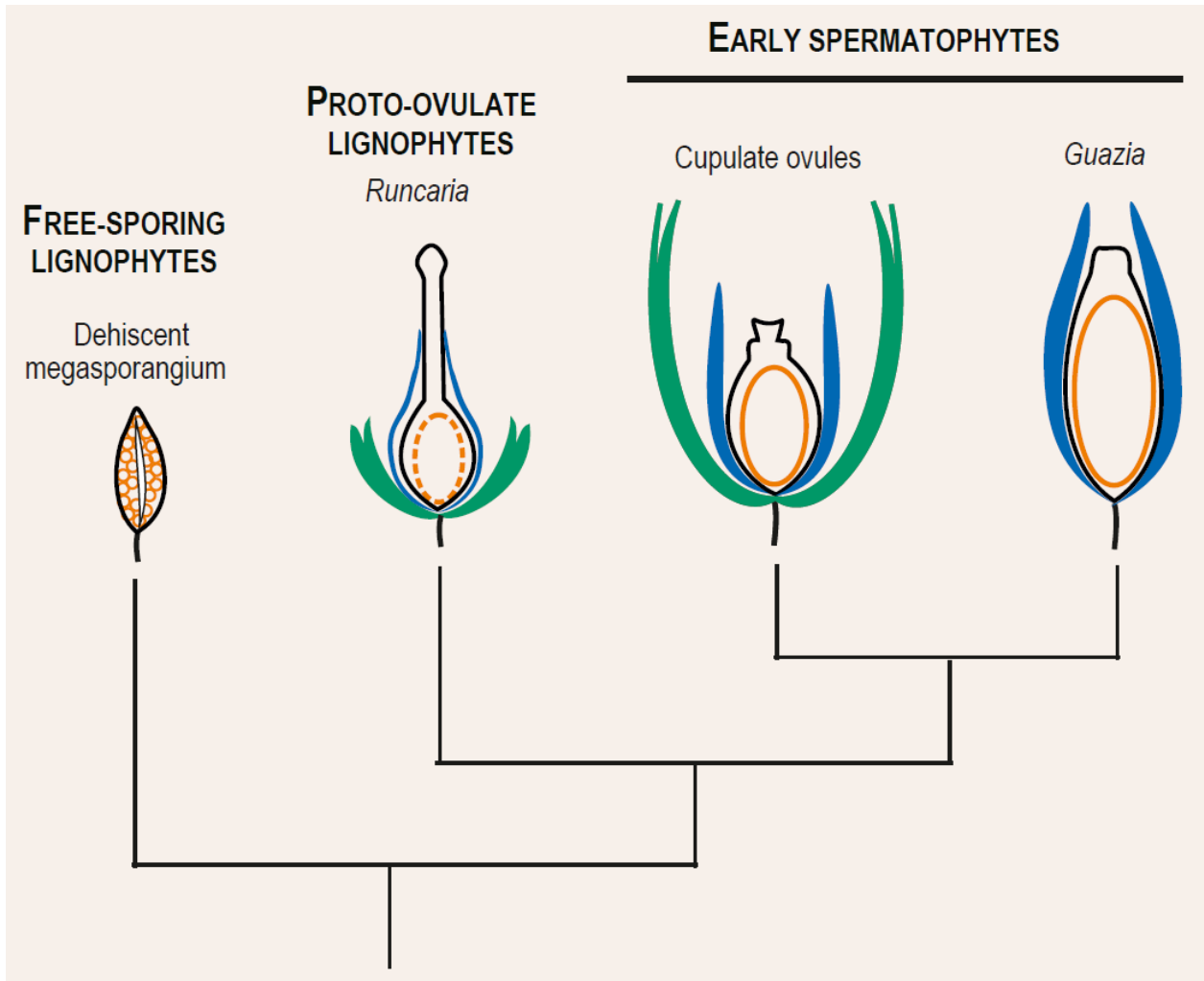


Figure 1. Evolutionary framework for the evolution of Famennian ovules. Megaspores and female gametophytes in orange, megasporangium and nucellus in black, cupule in green, integument in blue.

ORIGINAL UNEDITED