



**HAL**  
open science

## The genetic interaction of REVOLUTA and WRKY53 links plant development, senescence, and immune responses

Justine Bresson, Jasmin Doll, François Vasseur, Mark Stahl, Edda von Roepenack-Lahaye, Joachim Kilian, Bettina Stadelhofer, James Kremer, Dagmar Kolb, Stephan Wenkel, et al.

### ► To cite this version:

Justine Bresson, Jasmin Doll, François Vasseur, Mark Stahl, Edda von Roepenack-Lahaye, et al.. The genetic interaction of REVOLUTA and WRKY53 links plant development, senescence, and immune responses. PLoS ONE, 2022, 17 (3), pp.e0254741. 10.1371/journal.pone.0254741 . hal-03678076

**HAL Id: hal-03678076**

**<https://hal.inrae.fr/hal-03678076>**

Submitted on 25 May 2022

**HAL** is a multi-disciplinary open access archive for the deposit and dissemination of scientific research documents, whether they are published or not. The documents may come from teaching and research institutions in France or abroad, or from public or private research centers.

L'archive ouverte pluridisciplinaire **HAL**, est destinée au dépôt et à la diffusion de documents scientifiques de niveau recherche, publiés ou non, émanant des établissements d'enseignement et de recherche français ou étrangers, des laboratoires publics ou privés.



Distributed under a Creative Commons Attribution 4.0 International License

## RESEARCH ARTICLE

# The genetic interaction of *REVOLUTA* and *WRKY53* links plant development, senescence, and immune responses

Justine Bresson<sup>1</sup> <sup>1,2,3\*</sup>, Jasmin Doll<sup>1</sup>, François Vasseur<sup>2,3,4</sup>, Mark Stahl<sup>1</sup>, Edda von Roepenack-Lahaye<sup>1</sup>, Joachim Kilian<sup>1</sup>, Bettina Stadelhofer<sup>1</sup>, James M. Kremer<sup>4,5</sup>, Dagmar Kolb<sup>1</sup>, Stephan Wenkel<sup>5</sup>, Ulrike Zentgraf<sup>1</sup>\*

**1** ZMBP, General Genetics, University of Tübingen, Tübingen, Germany, **2** INRAE, Montpellier, France, **3** LEPSE, Univ Montpellier, INRAE, Institut Agro, Montpellier, France, **4** Department of Microbiology and Molecular Genetics, Michigan State University, East Lansing, United States of America, **5** Department of Plant and Environmental Sciences, University of Copenhagen, Frederiksberg C, Denmark

\* <sup>1</sup> Current address: CEFE, Univ Montpellier, CNRS, EPHE, IRD, Univ Paul Valéry Montpellier, Montpellier, France

\* <sup>2</sup> Current address: Joyn Bio, Boston, Massachusetts, United States of America

\* [j.bresson34@gmail.com](mailto:j.bresson34@gmail.com) (JB); [ulrike.zentgraf@zmbp.uni-tuebingen.de](mailto:ulrike.zentgraf@zmbp.uni-tuebingen.de) (UZ)



## OPEN ACCESS

**Citation:** Bresson J, Doll J, Vasseur F, Stahl M, Roepenack-Lahaye E, Kilian J, et al. (2022) The genetic interaction of *REVOLUTA* and *WRKY53* links plant development, senescence, and immune responses. PLoS ONE 17(3): e0254741. <https://doi.org/10.1371/journal.pone.0254741>

**Editor:** Binod Bihari Sahu, National Institute of Technology Rourkela, INDIA

**Received:** June 26, 2021

**Accepted:** March 9, 2022

**Published:** March 25, 2022

**Copyright:** © 2022 Bresson et al. This is an open access article distributed under the terms of the [Creative Commons Attribution License](https://creativecommons.org/licenses/by/4.0/), which permits unrestricted use, distribution, and reproduction in any medium, provided the original author and source are credited.

**Data Availability Statement:** All relevant data are within the paper and its [Supporting Information](#) files.

**Funding:** JB was supported by the Institutional Strategy of the University of Tuebingen (Deutsche Forschungsgemeinschaft, ZUK 63) and also funded by the Alexander von Humboldt Foundation. This work was supported by the Deutsche Forschungsgemeinschaft (CRC1101, B06). The funders had no role in study design, data collection and analysis, decision to publish, or preparation of

## Abstract

In annual plants, tight coordination of successive developmental events is of primary importance to optimize performance under fluctuating environmental conditions. The recent finding of the genetic interaction of *WRKY53*, a key senescence-related gene with *REVOLUTA*, a master regulator of early leaf patterning, raises the question of how early and late developmental events are connected. Here, we investigated the developmental and metabolic consequences of an alteration of the *REVOLUTA* and *WRKY53* gene expression, from seedling to fruiting. Our results show that *REVOLUTA* critically controls late developmental phases and reproduction while inversely *WRKY53* determines vegetative growth at early developmental stages. We further show that these regulators of distinct developmental phases frequently, but not continuously, interact throughout ontogeny and demonstrated that their genetic interaction is mediated by the salicylic acid (SA). Moreover, we showed that *REVOLUTA* and *WRKY53* are keys regulatory nodes of development and plant immunity through their role in SA metabolic pathways, which also highlights the role of *REV* in pathogen defence. Together, our findings demonstrate how late and early developmental events are tightly intertwined by molecular hubs. These hubs interact with each other throughout ontogeny, and participate in the interplay between plant development and immunity.

## Introduction

The life cycle of flowering plants can be considered as a series of distinct growth phases driven by developmental genetic programs that integrate both environmental and endogenous stimuli. In annual plants, leaf senescence, defined as the last developmental stage, is often

the manuscript. The funder provided support in the form of salaries for authors [JB], but did not have any additional role in the study design, data collection and analysis, decision to publish, or preparation of the manuscript. The specific roles of these authors are articulated in the 'author contributions' section.

**Competing interests:** The authors have declared that no competing interests exist.

considered as an essential trait of plant adaptation to its biotic and abiotic environment [1]. Leaf senescence is notably of utmost importance in the crosstalk between developmental, abiotic stress and immune responses, and influences plant productivity and fitness, as well as resistance to pathogens [2]. However, how senescence-related genes connect plant development, abiotic stress and immune responses still remains unclear. Moreover, this raises questions how early and late developmental events are coordinated by dynamic molecular hubs expressed throughout the life cycle of the plant.

The onset, progression and completion of leaf senescence are tightly regulated, and depend on both plant age and growth environment. The senescence process occurs in an orderly manner, and without exogenous stress it mainly depends on the integration of age information at leaf and whole-plant levels [3]. In *Arabidopsis thaliana*, senescence is initiated as soon as full expansion of the leaves is reached and usually coincides with the transition from vegetative to reproductive growth [4]. During senescence progression, sequential changes arise coordinately in plant physiology and metabolism, and so implicate a large variety of genes involved for examples in the regulation of hormone, sugar and reactive oxygen species (ROS) levels [5]. The network of senescence-related genes initiates a well-orchestrated degradation of chlorophyll and other macromolecules, resulting in a sharp decrease of leaf photosynthetic activity [6]. When all essential nutrients have been remobilized to reach the reproductive parts of the plant, leaf death occurs as terminal phase of senescence [5, 7].

Even though senescence is developmentally programmed, it can be strongly modulated by various exogenous factors. Stress, such as water stress or pathogen attack, can for example induce premature senescence as exit strategy to guarantee offspring under long-lasting unfavourable conditions [5]. Altogether, senescence is the result of a balance between developmental and environmental clues, integrating major transcriptional changes. In the case of pathogen infection, immune responses are induced and interfere with age-induced senescence signals, which can, in some cases, lead to a precocious senescence [2]. Interestingly, large-scale analyses of gene expression in senescing leaves of *A. thaliana* revealed that defence-related genes represent a significant portion of the leaf senescence transcriptome [8]. Indeed, it has been shown that their respective signalling pathways greatly overlap and several senescence-associated genes (SAGs) are activated during both development and defence [8–10]. A large fraction of the genes that operate at the nexus of development and defence encode proteins involved in hormonal signalling. For instance, jasmonic (JA) and salicylic (SA) acids have long been recognized as key hormones in the interconnection between age- and stress-induced senescence [11]. JA, SA as well as abscisic acid (ABA) levels increase during age-related senescence [6] and signalling mutants are impaired in senescence onset and/or progression [12–14].

Transcription factors (TF) also play a pivotal role as they often act as regulatory nodes between signalling pathways and thus contribute to the fine-tuning of developmental and defence responses [2]. Among the most relevant TFs, the *WRKY* gene family constitutes the second largest group of the senescence transcriptome [15] and several *WRKY*s are also implicated in plant immunity [16]. Consistently, *WRKY53* acts at a convergence point between age-induced and stress-induced senescence [17, 18]. For instance, *WRKY53* is known to be a positive regulator of senescence initiation and interacts with a large number of genes involved in senescence signalling, including other *WRKY* members and various SAGs [18, 19]. Moreover, *WRKY53* has been shown to be an important component of defence signalling pathways in *Arabidopsis* [16]. Dual functionality in plant immunity was observed: while *wrky53* mutant plants had increased susceptibility toward *Pseudomonas syringae* [20, 21], delayed symptoms were displayed during *Ralstonia solanacearum* infection [22].

Owing to its key multi-function, *WRKY53* expression is under a complex control. Its expression is notably modulated by the cellular redox state, SA and JA. Its activity can be

modulated by phosphorylation by a mitogen-activated protein kinase kinase kinase (MEKK1) or by interaction with *EPITHIOSPECIFYING SENESCENCE REGULATOR (ESR/ESP)*, which both have functions in pathogen responses [23, 24]. Recently, *REVOLUTA (REV)*, a member of the class III homeodomain leucine zipper (*HD-ZIPIII*) TF family, has been identified as a direct and positive regulator of *WRKY53* expression [25]. *REV* is known to have pleiotropic effects during plant development [26]. It mainly regulates polarity associated-growth processes during early leaf development but also controls the formation of floral meristems [27, 28]. *REV* is part of a regulatory network of HD-ZIPIII factors, miRNAs and microproteins [28–30]. Interestingly, an additional role for *REV* in late leaf development has been recently reported since loss-of-function mutations in *REV* strongly delayed the onset of senescence, through the control of the expression of *WRKY53* and other SAGs like e.g. *MORE AXILLARY BRANCHES 2 (MAX2)* by the *REV* protein [25, 31]. This result pointed out the importance of *REV* in the genetic control of age-induced senescence. However, despite its key role in senescence initiation, the implication of the *REV-WRKY53* genetic interaction through plant life cycle and immunity remains unknown.

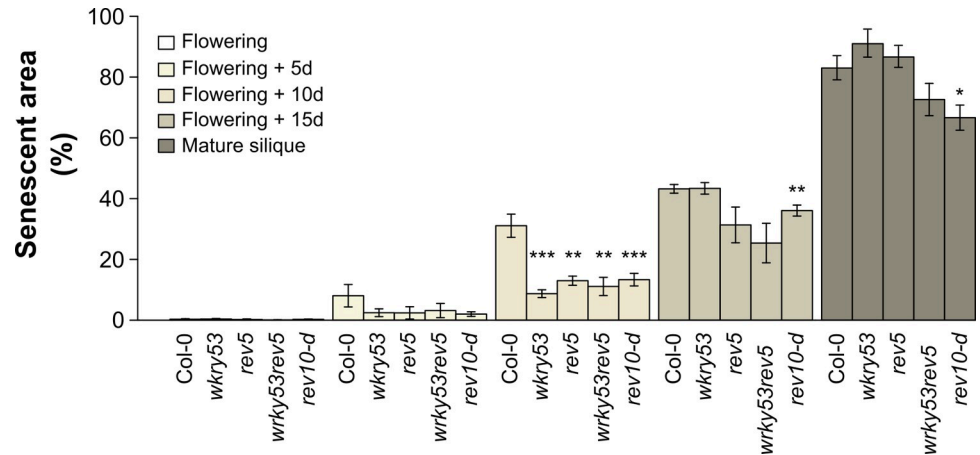
In this paper, we examined whether the genetic interaction between *REV* and *WRKY53* occurs from early to late development phases, and controls plant metabolism and immune responses. Combining ecophysiological, metabolic and molecular analyses, we examined the role of *REV* and *WRKY53* in the dynamics of *A. thaliana* growth and responses to pathogen attack. This study was conducted using four mutants affected in *REV* and/or *WRKY53* expression, which allow deciphering the specific role of each gene and their combined roles. Our results showed that although *WRKY53* is a regulator of late leaf development, it also determined vegetative growth events at early developmental stages. Inversely, *REV* critically controlled late developmental phases and reproduction although it is known as a master regulator of early plant development and leaf patterning. Their genetic interaction fluctuated throughout ontogeny and is dependent on environmental stimuli. Moreover, we showed that the *REVOLUTA-WRKY53* interaction is a key regulatory node of plant development and immunity through its role in SA metabolic pathways.

## Results

### ***REV* and *WRKY53* control metabolic changes during senescence, especially related to SA metabolism**

Senescence was dynamically analysed from flowering (first flower opens) until later developmental stages, ending with fruit ripening (first yellowing mature siliques) in wild-type plants (Col-0) as well as in four different mutants affected in *REV* and/or *WRKY53* expression: the mutants *rev5*, *wrky53* and *wrky53rev5* present single and double knock-out mutations [22, 24], whereas *rev10-d* is a semi-dominant gain-of-function *REV* allele [27]. In all tested mutants, senescence was delayed after flowering, with a significant and strong deceleration 10 days after flowering, compared to Col-0 wild-type (Fig 1). In *rev5*, *wrky53* and *wrky53rev5* mutants, this delay was mainly due to postponed initiation of senescence in the first (oldest) leaves of the rosette (leaf position 1–8; S1 Fig). At later stages, the knock-out mutants reached similar percentages of senescent areas to Col-0, whereas *rev10-d* mutants were significantly less senescent until fruit ripening (*i.e.*, mature silique stage; Fig 1). This strong delayed senescence in *rev10-d* was the result of a higher number of younger healthy leaves and not a delay in the onset of senescence (leaf position 16–20; S1 Fig).

To understand whether and how *REV* and *WRKY53* influence plant metabolism during senescence progression, we measured 22 metabolites from flowering until mature silique stage, including phytohormones and related components, sugars, amino and organic acids. The heat

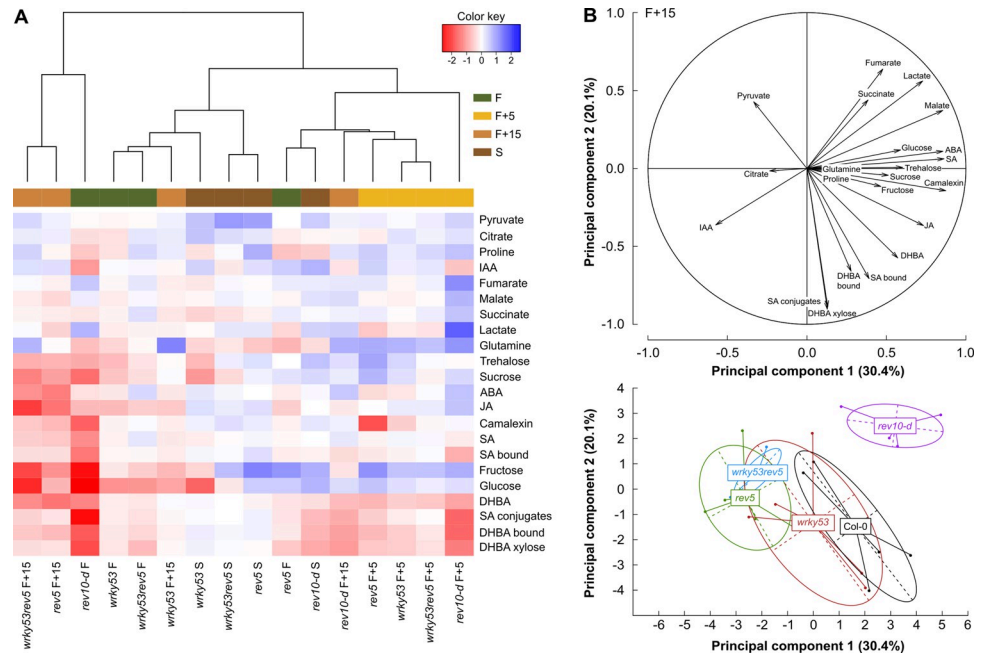


**Fig 1. Analysis of senescence progression in the different *REV* and *WRKY53* mutants.** Percentage of senescent area throughout the development from flowering to mature silique using chlorophyll fluorescence imaging. Senescent area was calculated by the ratio between pixel number for a photosynthetic efficiency  $F_v/F_m \leq 0.6$  and the total pixel number of the rosette. Flowering was reached when the first flower was open. Mature silique stage was considered from the first yellowing siliques. Data are means ( $\pm$  SE) of 5–30 plants per genotype. Significant differences were analysed using Kruskal–Wallis tests: \*:  $P \leq 0.05$ , \*\*:  $P \leq 0.001$ , and \*\*\*:  $P \leq 0.0001$ . See also [S1 Fig](#).

<https://doi.org/10.1371/journal.pone.0254741.g001>

map of response ratio between Col-0 and mutants, revealed that the hierarchical clustering of the different conditions (*i.e.*, combining mutant and developmental stage) was not driven exclusively by plant development or by genotype but by a mixture between both ([Fig 2A](#)). At flowering, *rev5*, *wrky53* and *wrky53rev5* presented globally lower variations of response ratios (*i.e.* light colours) compared to *rev10-d* which presented a strong contrasting pattern, in which the majority of metabolites were found to be down-regulated, especially sugars and hormones (IAA, ABA, JA and SA-related components). The lower sugar contents in *rev10-d* at flowering was reversed in the later stages, which is consistent with the higher number of photosynthetically active leaves observed in this mutant ([S1 Fig](#)). The strongest observed dissimilarity in the response ratio of the mutants was found 15 days after flowering, while *rev5* at flowering was closely clustered to *rev10-d* at mature silique stage ([Fig 2A](#)). Throughout development, the double mutant *wrky53rev5* presented different patterns: it was closely clustered to *wrky53* at flowering and 5 days after flowering whereas it was more similar to *rev5* for the later stages.

The differences in the metabolic patterns of mutants compared to Col-0 at 15 days after flowering were analysed through a PCA of metabolites ([Fig 2B](#); [S1 Table](#)). PC1, which accounted for 30.4% of the total variance, was strongly explained by camalexin content, which is a phytoalexin involved in plant responses to pathogen infection and is linked to ROS and SA signalling [32]. PC1 was secondly explained by SA, ABA, malate and JA contents. Variations along PC1 were mainly driven by *rev5* and *wrky53rev5* genotypes ( $P < 0.01$ ; ANOVA on PC coordinates), which exhibited lower contents of these metabolites compared to Col-0 ([S2A–S2E Fig](#)), as illustrated by their respective distance from the centroid of Col-0 ([Fig 2B](#), [S1 Table](#)). PC2, which accounted for 20.1% of the total variance, was mainly explained by SA-related components, such as dihydroxybenzoic acid (DHBA)-xylose and DHBA-bound (total DHBA after hydrolyses—free DHBA), which are main SA catabolites in *Arabidopsis* [33] but also SA-conjugates (SA-(C6)-glycosides) and SA-bound (total SA after hydrolyses—free SA). Variations along PC2 were mainly driven by *rev10-d*, which presented the most significant genotypic effect ( $P < 0.01$ ; ANOVA on PC coordinates; [Fig 2B](#); [S1 Table](#)). Consistently, *rev10-d* displayed significant ( $P < 0.01$ ) lower SA-conjugates and DHBA-xylose compared to Col-0 ([S2F](#), [S2G Fig](#)). Amongst all genotypes, *wrky53* displayed the least metabolic changes at 15



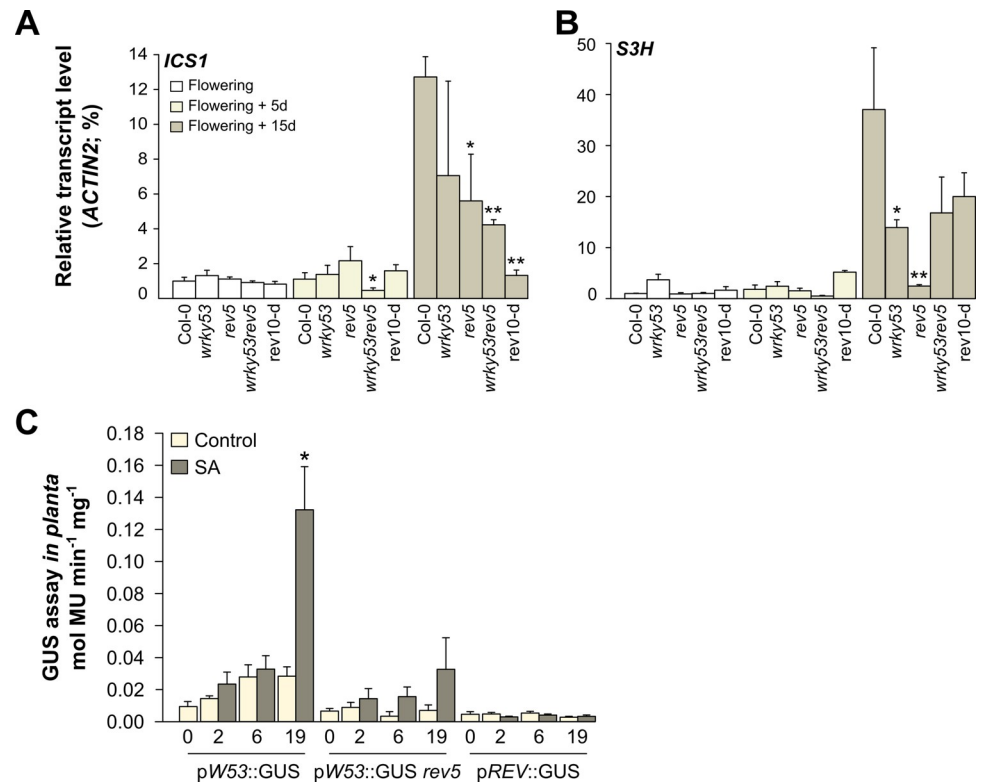
**Fig 2. Metabolite patterns in *REV* and *WRKY53* mutants over development.** (A) Heat map analysis of metabolites in *REV* and *WRKY53* mutants compared to wild-type Col-0. The row represents metabolites and the column displays the different genotype-stage combinations. The colour scale indicates the values of response ratio, calculated between the average of log-transformed values of Col-0 and a mutant at a given stage. Metabolite decreased is displayed in red, while metabolite increased is displayed in blue. White colour indicates no difference. The brightness of each colour corresponds to the magnitude of difference in the response ratio. The dendrogram represents the proximity between each genotype-stage metabolic pattern, as calculated from a hierarchical clustering analysis using Manhattan distance measures and Ward's hierarchical clustering method. (B) Principal component analysis on metabolite abundance values at 15 days after flowering. **Top:** representation of metabolites on the two first principal components. **Bottom:** projection of individual plants with centres of gravity per genotype ( $n = 5$ ). See also S1, S2 Tables and S2 Fig. IAA = auxin, ABA = abscisic acid, JA = jasmonic acid, SA = salicylic acid, SA bound = total SA after hydrolysis—free SA, SA conjugates = SA-(C6)-glycosides, DHBA = dihydroxybenzoic acid; DHBA bound = Total DHBA after hydrolysis—free DHBA; F = flowering; d = days and S = mature silique stage.

<https://doi.org/10.1371/journal.pone.0254741.g002>

days after flowering compared to Col-0 (Fig 2B and S2 Fig). The analysis of the double mutant in senescing plants, by two-way ANOVA revealed an additive effect of *REV* and *WRKY53* mutations on SA and SA-related compound contents (S2 Table).

### The salicylic acid signalling pathway is interconnected to *REV* and *WRKY53* genes

In view of metabolic changes occurring in the mutants, we explored how *REV*, *WRKY53*, and SA metabolism could be linked. We first evaluated the modifications of the SA signalling pathway in the *REV* and *WRKY53* mutants through two key genes in SA biosynthesis and catabolism (Fig 3A, 3B). The *ISOCHORISMATE SYNTHASE 1* (*ICS1*; also known as *SALICYLIC ACID INDUCTION DEFICIENT 2*, *SID2*) gene, which is involved in SA biosynthetic process [34], presented an increasing expression during senescence progression in Col-0 (Fig 3A). This up-regulation was significantly reduced in *wrky53rev5* upon 5 days after flowering compared to Col-0, whereas *rev5* and *rev10-d* had a strong reduction at 15 days after flowering (Fig 3A). In contrast, *wrky53* did not show any significant difference in *ICS1* expression over time. The expression of the SA 3-HYDROXYLASE (*S3H*; also named *SAG108*) gene which is



**Fig 3. Genetic regulation of SA-related genes and promoter activities of *REV* and *WRKY53* after salicylic acid treatments.** Gene expression analysis by qRT-PCR over development: (A) *ICS1* and (B) *S3H*. qRT-PCR was performed in leaf at position 10, pooled by 5 per genotype per stage. Transcriptional levels were calculated based on the comparative  $\Delta\Delta C_T$  method and normalized to *ACTIN2* levels. Data are means ( $\pm$ SE) of 2 biological replicates with 1–2 technical replicates. (C) Dynamics of GUS activities *in planta* after SA treatment. pWRKY53::GUS lines in Col-0 and *rev5* background, and pREV::GUS plants in *rev9* knock-out mutant [24, 33], were used to quantify promoter activities 2, 6 and 19 hours after treatment. Data are means ( $\pm$  SE) of 2 biological and 2 technical replicates: 6–13 plants per genotype per condition. Significant differences were analysed using Kruskal–Wallis tests (\*:  $P \leq 0.05$ ; \*\*:  $P \leq 0.01$ ). Primers used for qRT-PCR are listed in S4 Table.

<https://doi.org/10.1371/journal.pone.0254741.g003>

involved in SA catabolism [35], exhibited similar trends as per *ICS1*. The expression of the *S3H* gene in Col-0 was increased during senescence and expression in all mutants tended to be lower at 15 days after flowering, with a significant effect for *wrky53* and *rev5* (Fig 3B).

While the biosynthesis and catabolism of SA appears to be modulated by *REV* and *WRKY53* (Fig 3A, 3B), it has also been shown that *WRKY53* expression can be activated by exogenous SA in wild-type plants [23]. To identify whether *REV* expression is also regulated by SA and whether *REV* is involved in SA-induced expression of *WRKY53*, we made quantitative measurements of  $\beta$ -glucuronidase (GUS) activity *in planta* using both *REV* and *WRKY53* GUS-reporter lines after SA treatments. As expected, 19 h after SA-spraying on pW53::GUS rosettes, *WRKY53* expression was clearly induced. These results were modified when pW53::GUS was expressed in the *rev5* background (Fig 3C). Indeed, *WRKY53* expression in this line was weaker and no longer significantly induced by SA when comparing to pW53::GUS line with wild-type *REV*. This demonstrates that the hormonal regulation of *WRKY53* expression is modulated through the transcriptional factor *REV*. Moreover, our GUS expression analyses using pREV::GUS plants indicate that *REV* expression itself was not affected by SA treatments (Fig 3C).

## The *REV-WRKY53* interaction controls early and late events of plant development from leaf production to fruit ripening

We performed a comprehensive analysis of plant development from germination to late developmental stages including specific hallmarks such as bolting (flower bud emergence), flowering and mature siliques.

The multivariate effects of the *REV-WRKY53* genetic interaction were first analysed through a principal component analysis (PCA) performed on 14 growth-related traits (S3 Table). First and second principal components (PCs) explained 40.2% and 32.8% of the total variance, respectively (S3 Fig). Projection of individuals revealed high genotypic variability as indicated by the distance of the genotypes from the centroid of each other. PC1 was mainly explained by the number and dry mass (DM) of leaves, flowering time and rate of leaf production (RLP; S3 Table), PC2 was driven by senescence- and fitness-related traits, such as the senescent area, reproductive allocation (calculated as the ratio between total silique and rosette DM) and stem size (S3 Table).

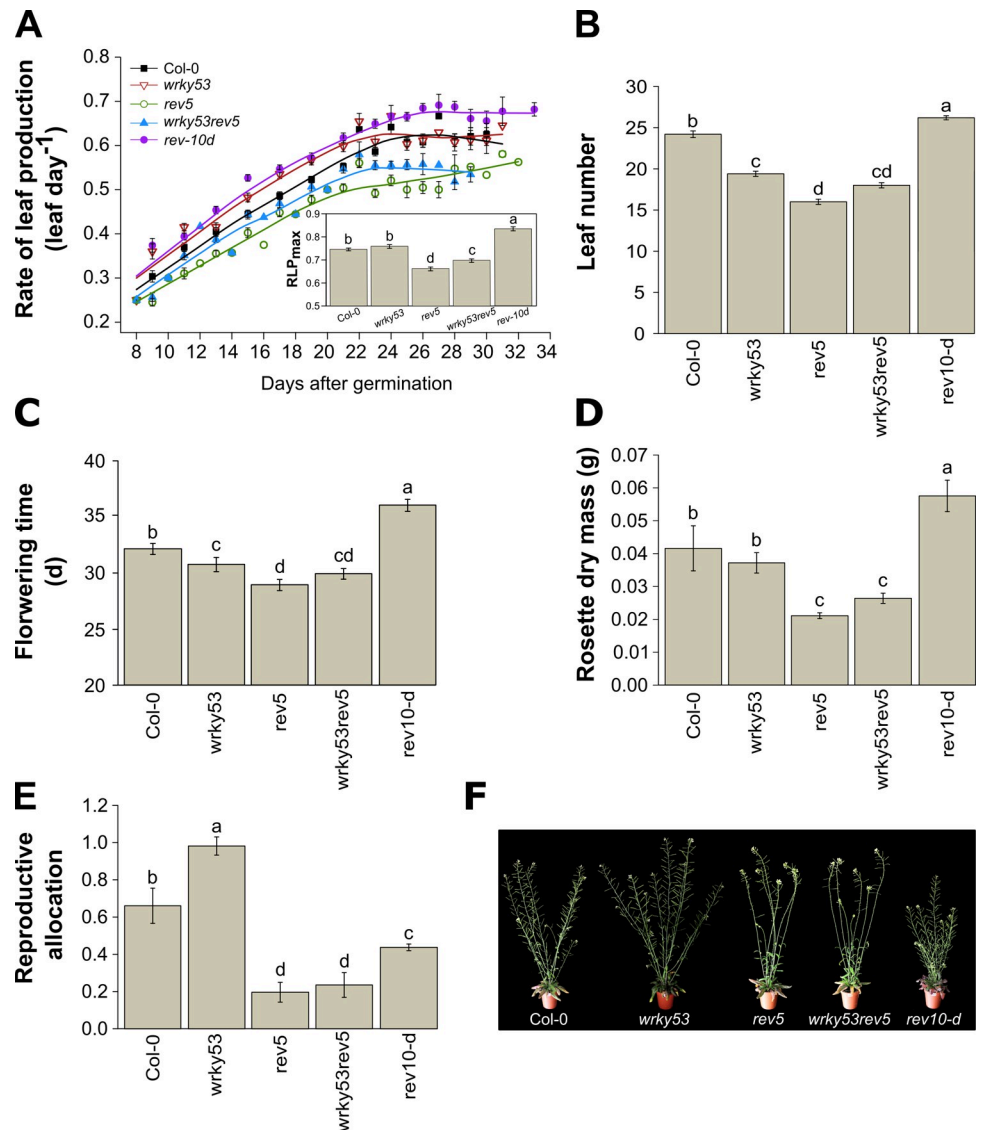
Throughout their life cycle, the different mutants exhibited contrasting growth trajectories (Fig 4A). The *rev10-d* gain-of-function and the *rev5* loss-of-function mutant showed antagonistic growth strategies and presented opposite effects in RLP, total leaf number, flowering time and rosette DM (Fig 4A–4D). In addition, *rev10-d* presented a faster and longer production of leaves, with a delayed flowering time compared to Col-0. As a result, *rev10-d* had a higher rosette DM. By contrast, *rev5* displayed a reduced RLP<sub>max</sub>, less leaves, a precocious flowering time and thus a lower rosette DM compared to Col-0 (Fig 4A–4D). While *rev10-d* and *rev5* had opposite phenotypes, *wrky53* mutant plants presented similar phenotypes as *rev5* but with less pronounced effects: although *wrky53* tended to have a higher RLP<sub>max</sub>, it presented a significant lower total leaf number, and less days to reach flowering compared to Col-0. The *wrky53rev5* double mutant displayed similar trends as *rev5* and *wrky53* but with an intermediate phenotype (Fig 4A–4D). During fruit ripening, the reproductive allocation was also greatly affected by *REV* and *WRKY53* expression; *wrky53* presented a significantly higher production of siliques per rosette DM than Col-0 whereas *rev10-d*, *rev5* and *wrky53rev5* had lower values (Fig 4E). On the contrary, although *rev10-d* had a much bigger rosette DM, this mutant produced less DM of siliques per rosette DM (Fig 4E, 4F).

The analysis of the *REV-WRKY53* genetic interaction over the development revealed an interactive effect of the *REV* and *WRKY53* mutations on leaf number, flowering time, shoot DM, and a marginally significant effect on senescence at 10 days after flowering and reproductive allocation (results of two-way ANOVA; S2 Table).

## *REV* and *WRKY53* mediate plant responses to pathogen

Because SA metabolism as well as camalexin production were altered in *wrky53* and *rev* mutants and a general overlap of senescence-associated and pathogen-associated genes has been reported, we aimed to examine pathogen response in the mutants compared to wild-type plants. To explore the crosstalk between the *REV-WRKY53* interaction and plant immunity, we analysed the phenotypic responses to pathogen infection at early developmental stages. For all genotypes, 16-day-old rosettes (without visual senescence symptoms) were infected by spraying a suspension of a genetically modified strain of *Pseudomonas syringae* pv *tomato* DC3000 (*Pst*) constitutively expressing green fluorescent proteins (GFP), that allowed us to monitor its quantification in leaves (Fig 5A). In addition, plant susceptibility was followed after infection using chlorophyll fluorescence (ChlF) imaging through photosynthetic efficiency ( $F_v/F_m$ ) measurements of whole-rosettes (Fig 5A). Response ratio of  $F_v/F_m$ , calculated as the relative ratio of *Pst*-infected plants compared to mock-treated plants, showed that 2 days

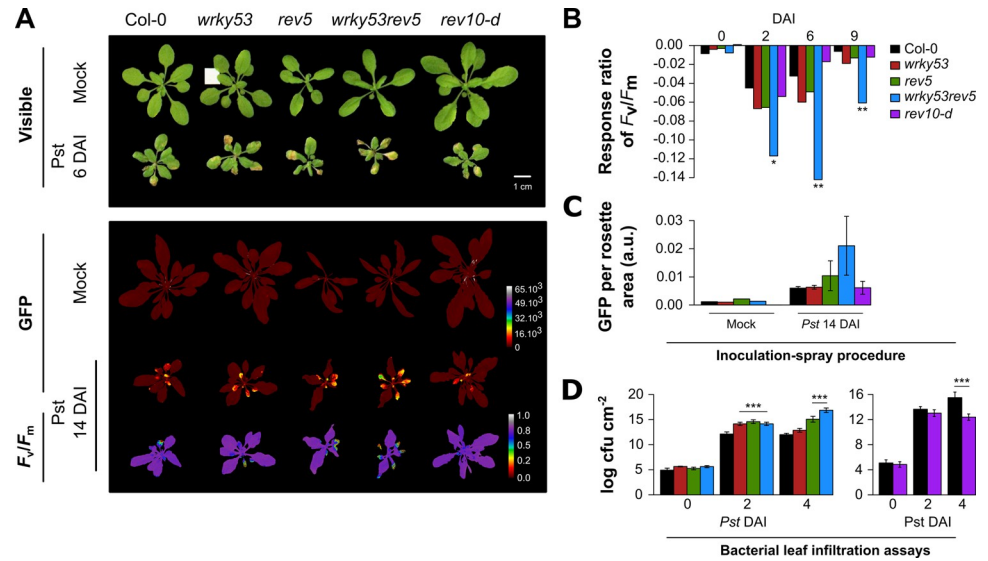




**Fig 4. Developmental analysis of the different *REV* and *WRKY53* mutants.** (A) Rate of leaf production (RLP) during days after germination. Leaf number was counted from the two first true leaves until bolting. Insert in A represents the maximum RLP calculated as the slope (leaf per day), estimated by fitting a linear curve for each plant over time. (B) Leaf number at flowering. (C) Time to reach flowering. (D) Rosette dry mass at bolting. (E) Reproductive allocation at mature silique stage, calculated by the ratio of total silique dry mass per rosette dry mass. (F) A representative picture of rosettes and reproductive organs of the different genotypes at the mature silique. Bolting was defined by the emergence of the flower buds. Flowering was reached when the first flower was open and mature silique stage was considered from the first yellowing siliques. Data are means ( $\pm$  SE) of 5–30 plants per genotype. The different letters indicate significant differences following Kruskal–Wallis tests ( $P \leq 0.05$ ). See also S2 and S3 Tables.

<https://doi.org/10.1371/journal.pone.0254741.g004>

after infection (DAI) *wrky53* and *rev5* tended to be more sensitive to the infection compared to Col-0, whereas *wrky53rev5* presented a significantly intensified sensitivity (Fig 5B). On the other hand, *rev-10d* appeared to be less sensitive than the others mutants and had a faster recovery of photosynthetic capacities, as illustrated by a reduced response ratio of  $F_v/F_m$  at 6 DAI when comparing to Col-0 (Fig 5B). Investigation of bacterial growth through GFP quantification at 14 DAI indicated that *wrky53rev5* had an increased colonisation of *Pst* in leaves (Fig 5C). These findings were confirmed by independent experiments (S4 Fig) but also through



**Fig 5. Pathogen assays using *Pseudomonas syringae* inoculation.** 16-day-old plants were infected with *Pseudomonas syringae* (*Pst*) pv *tomato* DC3000, constitutively expressing GFP by spraying a *Pst* suspension on leaf surfaces. Bacterial colonisation was followed by quantification of GFP fluorescence *in planta* and plant disease was investigated using chlorophyll fluorescence imaging. **(A) top:** a representative picture of rosettes 6 days after infection (DAI), in parallel to the respective mock condition. **Bottom:** a representation of GFP fluorescence *in planta* in mock condition and *Pst*-infected plants, and photosynthetic efficiency ( $F_v/F_m$ ) in *Pst*-infected plants 14 DAI **(B)** Response ratio of  $F_v/F_m$  during DAI, calculated as the relative ratio of *Pst*-infected plants compared to mock-treated plants ( $Pst$ -Mock)/Mock. Significant differences were analysed using two-way ANOVA (genotype by treatment interaction) on  $F_v/F_m$  values ( $n = 6-8$ ;  $*$ :  $P \leq 0.05$  and  $**$ :  $P \leq 0.001$ ). **(C)** Quantification of bacterial growth *in planta* expressed in GFP units per rosette area compared to the respective mock condition, 14 DAI. Data are means ( $\pm$  SE) of 3 plants. **(D)** Quantification of bacterial growth after infection (cfu = colony forming units). Data are means ( $\pm$  SE) of 4–6 plants. Significant differences were analysed using Kruskal–Wallis tests ( $***$ :  $P \leq 0.001$ ). See also S4 Fig.

<https://doi.org/10.1371/journal.pone.0254741.g005>

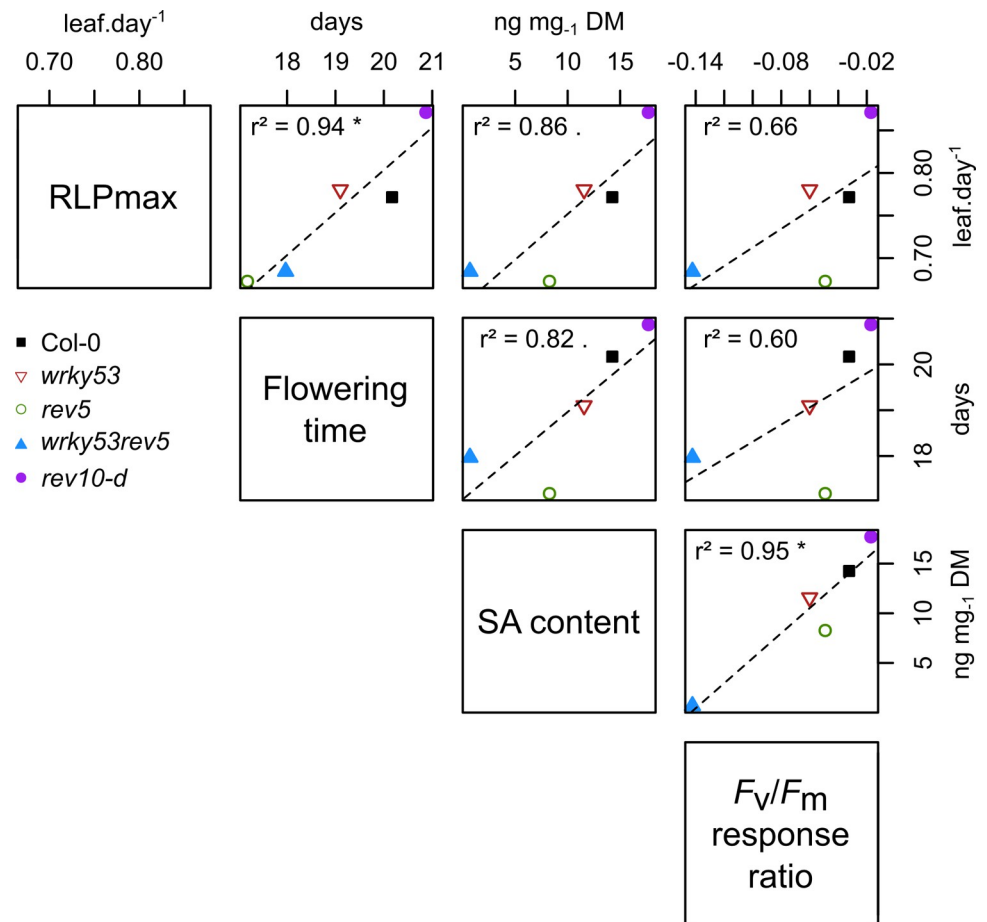
classical *Pst* bacterial leaf infiltration assays with subsequent bacterial growth curve evaluation (Fig 5D). Results of two-way ANOVA at 4 DAI revealed a strong additive effect of *REV* and *WRKY53* mutations ( $P < 0.001$  and  $P < 0.01$ , respectively) on the susceptibility to *Pst* infection (via bacterial quantification, Fig 5D, S2 Table).

### ***REV* and *WRKY53* connect plant growth, SA metabolism and immunity**

The analysis of correlations amongst traits showed that  $RLP_{max}$ , flowering time, SA content and  $F_v/F_m$  response ratio after *Pst* infection, were all positively correlated (Fig 6). For instance,  $RLP_{max}$  and flowering time were highly correlated ( $r^2 = 0.94$ ;  $P \leq 0.05$ ), as well as SA content with  $F_v/F_m$  response ratio ( $r^2 = 0.95$ ;  $P \leq 0.05$ ). Moreover, increased  $RLP_{max}$  and delayed flowering time explained 86% and 82% of the variation in SA content, respectively. Plant sensitivity to pathogen infection (i.e.  $F_v/F_m$  values) was also explained by developmental traits: 66% by  $RLP_{max}$  and 60% by flowering time. *rev10-d* presented an opposite behaviour compared to the knock-out mutants, in which *wrky53rev5* had an intermediate phenotype between *wrky53* and *rev5*.

### **Discussion**

The coordination of developmental programs throughout the life cycle of a plant is a central question of plant biology and phenotypic integration. In this study, we showed that the genetic interaction between *WRKY53*, a key senescence-related gene [18], and *REV*, which is known



**Fig 6. Correlations amongst key traits of plant development and immunity.** Pearson correlation coefficients within the different genotypes of key traits of plant development and immunity. RLP<sub>max</sub> is the maximum rate of leaf production calculated as the slope estimated by fitting a linear curve for each plant over time. Salicylic acid (SA) and F<sub>v</sub>/F<sub>m</sub> response ratio were measured at 15 days after flowering and 6 days after inoculation, respectively. (\*:  $P \leq 0.05$ ,.:  $P \leq 0.01$ ).

<https://doi.org/10.1371/journal.pone.0254741.g006>

as a leaf patterning gene [36], contribute to the fine-tuning of plant development, immunity and senescence.

The WRKY family represents one of the most abundant groups of TFs involved in the control of senescence [37]. As many TFs, WRKY members are also key actors in integrating developmental processes and stress responses [16]. Consistently, different WRKYs have been shown to be pivotal in pathogen defence [16]. For instance, WRKY53 acts as a positive regulator of basal resistance against *Pseudomonas syringae* (*Pst*) [19, 20]. However, the upstream regulation of WRKYs appears to be very complex and remains far from being completely understood. Here, we investigated the pleiotropic role of REV, because previous studies demonstrated that REV directly and positively regulates the expression of WRKY53 [24]. Moreover, REV also binds to additional differentially expressed senescence-associated genes during leaf senescence [24, 30], which suggests that this gene controls many aspects of plant development through its interaction with senescence-related genes. Consistently, we found that the REV-WRKY53 interaction controls several developmental traits: leaf production rate, flowering time and senescence, which later determine the reproductive success of plants (*i.e.*, biomass production and reproductive allocation). Interestingly, multivariate analysis of

developmental and senescence traits revealed that traits related to flowering time and vegetative growth were strongly correlated, shaping the first dimension of phenotypic variation (e.g., PC1 explained more than 40% of total phenotypic variance). This is consistent with previous analyses of natural variability performed in *A. thaliana*, in which traits related to growth rate and life cycle duration also represents the first axis of phenotypic variability [38]. By contrast, we found that SAGs were correlated to fitness-related traits, such as stem length and DM, as well as reproductive allocation. This suggests that senescence is a key process involved in the control and efficiency of reproduction, and that its role on fecundity dominates the role of flowering time or vegetative growth. *REV* mutants exhibited stronger effect on senescence and fitness traits than *WRKY53* mutants, which were more variable along the first phenotypic dimension. Strikingly, this finding reveals that *REV*, a gene known as a master regulator of early leaf patterning [26–28], critically controls late developmental phases and reproduction while, inversely, *WRKY53*, a gene known as a master regulator of late leaf development [39], determines vegetative growth even at early developmental stages. This unanticipated result demonstrates how late and early developmental events are tightly intertwined by molecular hubs that interact with each other.

Moreover, our study revealed that the plant's metabolism during growth was modified by *REV* and *WRKY53*. Amongst the studied metabolites, SA and its related components were the most variable ones between the mutants and Col-0. The analysis of the interaction between *REV* and *WRKY53* by two-way ANOVA indicated that both genes were independently involved in SA-related metabolic changes, and with a stronger effect of *REV*. By contrast, *REV* and *WRKY53* exhibited significant interaction in the control of plant development, notably for total leaf number at reproduction, flowering time and shoot dry mass. In addition, *REV* and *WRKY53* exhibited no or marginal interaction in the control of senescence and fitness traits. Taken together, our results suggest that *REV* and *WRKY53* strongly interact during plant development, while they later act independently in the control of senescence through the SA signalling pathway.

Since we found that the biosynthesis as well as catabolism of SA can be modulated by *REV* and *WRKY53*, SA-related gene expression was analysed. Two SA biosynthetic pathways have been characterized in plants, the phenylalanine ammonia lyase (PAL) pathway and the isochorismate (IC) pathway, both using chorismate as primary metabolite. However, approx. 90% of the SA produced after pathogen attack or UV light exposure are produced via the IC pathway [40, 41]. Isochorismate synthase (ICS) and isochorismate pyruvate lyase can convert chorismate to SA via isochorismate. Moreover, SA can also be stored in form of inactive SA glycosides (SA 2-O- $\beta$ -D-glucose and SA glucose ester) which are actively transported to the vacuole and can be converted back to SA [42, 43]. 2,3- and 2,5-dihydroxybenzoic acid (2,3-DHBA and 2,5-DHBA) sugar conjugates appear to be the major storage form in vacuoles of old Arabidopsis leaves [33, 44] and SA 3-hydroxylase (*S3H*), which converts SA to 2,3-DHBA, prevents over-accumulation of active SA implying an important role in regulating leaf senescence [33]. Consistent with previous findings [42], we showed that the expression of the *S3H* gene increased in senescing leaves of wild-type Col-0 plants. However, this up-regulation was damped in the mutants, with a significant interaction of *REV* and *WRKY53* mutations. In addition, we found that *ICS1* expression is also diminished in the mutants compared to the senescence-associated increase in wild-type, with a strong decrease in *rev10-d*. Thus, the control of isochorismate synthase and SA 3-hydroxylase activity by the *REV-WRKY53* interaction is expected to be crucial for the fine-tuning of plant senescence.

However, SA is known as a multifaceted hormone which is also of utmost importance for disease resistance, but also for flowering and senescence [45, 46]. Through its effect on the SA signalling pathway, the *REV-WRKY53* interaction could be a key driver of the already

described growth-defence trade-off [10]. In order to test this hypothesis, we sprayed plant seedlings with *Pst* to test the response of *REV* and *WRKY53* mutants to pathogen attack. Since *Pst* enters the plant through natural openings or wounds, this method just mimicked their natural entry into the apoplastic space [46]. Interestingly, we observed improved resistance against these pathogens in *rev10-d* compared to Col-0, although this mutant grew faster and higher than the wild-type. This suggests that the behaviour and phenotype of *rev10-d* can be explained by a higher SA content but also by a faster and longer production (*i.e.*, delayed flowering) of healthy leaves after infection. This result seems to suggest that *rev10-d* “escapes” the growth-defence trade-off. A possible explanation relies on the faster developmental rate of *rev10-d*. The higher leaf production rate might more efficiently compensate for the loss of infected tissues. However, everything comes at a cost. Here, we found that *rev10-d* had reduced fecundity compared to Col-0, consistent with a fecundity-defence trade-off [47]. In addition, not only SA metabolism but also the production of camalexin, which appears to be the major phytoalexin involved in biotic responses in *A. thaliana* [32, 48], is also altered in the mutants. Camalexin production exhibited the same pattern as free SA, most likely contributing to the resistance of *rev10-d*.

Moreover, we have shown that the induction of *WRKY53* expression by SA is dependent on *REV* as SA induction of a *WRKY53* promoter driven GUS reporter gene was severely impaired in the *rev* mutant background. However, *REV* expression appeared to be insensitive to SA, which means that there is a feed-back loop of SA production to *WRKY53* expression but not to *REV* expression. In the same line of evidence, *REV* is also involved in the response of *WRKY53* expression by H<sub>2</sub>O<sub>2</sub> [24] and SA induces the accumulation of H<sub>2</sub>O<sub>2</sub>, and *vice versa*. On the other hand, the DNA-binding activity of the *REV* protein is redox-sensitive indicating a very complex feed-back regulation between *REV*, *WRKY53*, H<sub>2</sub>O<sub>2</sub> and SA.

Collectively, our results indicate that the genetic interaction between *REV* and *WRKY53* seems to be strongly dependent on the developmental stage and that *REV* acts upstream of *WRKY53* to modulate SA signalling from early to late plant development.

## Materials and methods

### Plant material and growth conditions

The *A. thaliana* ecotype Col-0 and the following mutants in the Col-0 background were used in this study: *rev5*, (A260V) a strong ethyl-methylsulfonate (EMS) allele of *REV*; *wrky53*, (SALK-034157) a T-DNA insertion line in the second exon of *WRKY53* [22]; *wrky53rev5*, a double knock-out mutant [24] and *rev10-d*, a semi-dominant gain-of-function of *REV* allele where *REV* mRNA was rendered resistant to the negative regulation by microRNAs. The original *rev10-d* mutation was in the *Ler* background but was introgressed into Col-0, reducing the possibility of effect of a second-site mutation [27]. p*WRKY53*::GUS lines in Col-0 and *rev5* background, and p*REV*::GUS plants in *rev9* knock-out mutant [25, 36] were used to quantify promoter activity *in planta*. Plants were grown on standard soil (9:1 soil and sand) under controlled conditions: in long days (16 h day; 8 h night), low light (~70–80 μE m<sup>-2</sup> s<sup>-1</sup> at plant height) and an ambient temperature of 21°C (see [49] for details). Three independent experiments were done for developmental analysis, including senescence and plant productivity quantification.

### Plant developmental analysis

The number of leaves that were visible to the naked eye (at least/minimum of 2–3 mm) was counted every day to determine the RLP from the emergence of the first two true leaves until macroscopic visualization of flower buds. The maximum RLP was determined as the slope

estimated by fitting a linear curve for each plant over time. Bolting, flowering time and mature silique were determined as the number of days from germination until the visible appearance of the floral bud at the centre of the rosette, the first flower open and the ten first yellowing siliques, respectively [50]. At each specific stage, plants were individually harvested and leaf blades were separated from their petiole considering the position (age) within the rosette. Leaf blades were scanned for measurements of area using the ImageJ software (1.47v, Rasband, Bethesda, Maryland, USA). The maximum rate of leaf expansion ( $R_{\max}$ ) was determined as for [49]. Specific leaf area (SLA) was calculated as the ratio of total leaf area to leaf DM. DM of the different organs (leaves, petioles and stems) was measured by placing them in separate paper bags at 67°C for at least 5 days.

### Senescence and plant productivity quantification

Due to significant differences in phenology of mutants, senescence progression was analysed from the first flower open for each individual plant. Senescence was quantified in leaves using ChlF imaging (Imaging-PAM; Maxi version; ver. 2-46i, Heinz Walz GmbH; see [49, 51]). The maximum quantum yield of photosystem II (PSII) was estimated by the ratio of variable to maximal ChlF ( $F_v/F_m$ , also called photosynthetic efficiency) on dark-adapted plants, after 15–20 min. Senescent area was estimated by a clustering approach of  $F_v/F_m$  values of each pixel of the ChlF image (according to [52]). Senescent area was calculated by the ratio between pixel number for  $F_v/F_m \leq 0.6$  and the total pixel number of the rosette (or in single leaves). Silique was harvested when the ten first fruits are yellowing (mature silique stage). At this stage, all siliques were formed and only few functioning flowers were left, for all individuals. In other words, all plants were harvested when they finished their reproduction. Silique number was counted at mature silique stage and siliques were dried in a paper bag at 67°C for at least 5 days. Reproductive allocation was calculated by the ratio of total silique DM per rosette DM.

### Metabolomics analysis: Extraction of primary and secondary metabolites

For each genotype and senescence stage 5 replica samples were created. For each replica, leaves at position 5 to 11 were pooled and weighed for each plant from flowering to mature silique stages. 10 mg of freeze dried, retched (5 mm steel ball; 30 sec) plant material was extracted with 200  $\mu$ l 80% methanol (MeOH; 0.1% formic acid (FA); ice cold). The pellet was re-extracted with 200  $\mu$ l 20% MeOH (0.1% FA; icecold) and both supernatants were combined. The whole extraction process was done at 10°C including a 10 min sonication and centrifugation step (18600 g). For the analysis of the free and conjugated phytohormones the final extract was directly used for targeted liquid chromatography–mass spectrometry (LC-MS) analysis (see [S1 File](#)). To determine the amount of bound SA and DHBA, 50  $\mu$ l of the plant extracts were hydrolyzed with 4  $\mu$ l concentrated FA (99°C; 2 h; 800 rpm), cooled down on ice and centrifuged (10°C; 18600 g) before submitting them into the targeted LC-MS pipeline. For the analysis of sugars and amino acids, 100  $\mu$ l extracts were dried down in a speed vacum concentrator before derivatisation for gas chromatography-MS (GC-MS) analysis (see [S1 File](#)). For non-targeted LC-MS analysis, the same extraction was performed as for the targeted approach (see [S1 File](#)). The combined supernatants from the extraction were dried down in a speed vacum concentrator and afterwards redissolved in 100  $\mu$ l 20% MeOH containing 0.1% FA and 9  $\mu$ M L-Enkephalin as an internal standard. In addition 10  $\mu$ l of each sample was combined to create a pool sample of the entire analysis. 5  $\mu$ l of any sample were injected for the non-targeted LC-MS analysis.

## Gene expression analysis

In two independent experiments (same growth conditions as above), gene expression levels were followed by qRT-PCR according to [48]. Leaves at position 10 were harvested from flowering to mature silique stages in individual plants. A pool of 5 leaves per genotype/stage was used for RNA extraction and cDNA synthesis. Samples harvested at mature silique stage were removed from the analyses because very low amounts of RNA could be isolated and no reliable transcript levels were detected. Transcriptional changes were calculated based on the comparative  $\Delta\Delta C_T$  method [53] and normalized to *ACTIN2* levels. Primers used are listed in S4 Table.

## Quantitative measurement of GUS activity *in planta* after SA treatments

Two-week-old plants were used to analyse GUS activity *in planta* by spraying whole-rosette with 2 mM SA in 0.15% ethanol and 0.02% Silwet L-77. Control plants were treated using appropriate mock solution. GUS activity was measured according to [54]. Rosettes were individually frozen in liquid nitrogen, homogenized using Mill MM 200 (Retsch GmbH, Germany) and resuspended in 1 mL GUS Extraction Buffer (50 mM sodium phosphate pH 7.0, 10 mM EDTA, 10 mM  $\beta$ -mercaptoethanol, 0.1% triton X-100, 0.1% sarcosyl and 25  $\mu\text{g mL}^{-1}$  PMSF). Samples were strongly vortexed and centrifuged at 13,000 rpm for 15 min at room temperature. 200  $\mu\text{L}$  of supernatant were then kept on ice. 10  $\mu\text{L}$  of extracts were added in 130  $\mu\text{L}$  Assay Buffer (GUS Extraction Buffer containing 2 mM 4-methylumbelliferyl  $\beta$ -D-glucuronide; MUG). After 20 min at 37°C, 10  $\mu\text{L}$  of the reaction were transferred to 190  $\mu\text{L}$  of a 200 mM sodium carbonate solution in a 96-well dark plate. Fluorescence was measured on a TriStar LB941 plate reader (Berthold Technologies, Germany) at 460 nm (emission) and 355 nm (excitation). A standard curve from 0 to 50  $\mu\text{M}$  of 4-methylumbelliferone (4-MU) was used to calculate moles of MU  $\text{min}^{-1}$  produced after the cleavage of MUG by GUS enzyme in *planta*. 2  $\mu\text{L}$  of extracts in 200  $\mu\text{L}$  of 5-fold diluted Bradford Roti-Quant (Roth, Germany) were used to quantify protein concentration of samples [55] and to calculate the final GUS activity in  $\text{nmol MU min}^{-1} \text{mg}^{-1}$ .

## Pathogen assays and bacterial quantification

Pathogen assays were performed using *Pst pv tomato* DC3000 *attTn7-egfpmut3* constitutively expressing GFP. *Pst pv tomato* DC3000 was labeled via Tn7 site-specific transposition with the mini-Tn7 vector pURR25 [56] essentially as described in [57]. Bacteria were grown overnight at 28°C in dark in specific medium (1% (w/v) tryptone, 0.6% (w/v) yeast extract, 0.15% (w/v)  $\text{K}_2\text{HPO}_4$ , 0.06% (w/v) NaCl, pH 7) supplemented with rifampicin (50  $\mu\text{g mL}^{-1}$ ) and kanamycin (25  $\mu\text{g mL}^{-1}$ ) to  $\text{OD}_{600} = 0.8$ . The inoculum preparation and Arabidopsis infection were then done as described by Katagiri et al., (2002). A final density of  $5 \times 10^8$  colony-forming unit  $\text{mL}^{-1}$  (cfu  $\text{mL}^{-1}$ ) of bacterial suspension, in sterile water with 0.02% (v/v) Silwet L-77, was used for spray inoculation of 16-day-old plants. As control, a mock solution (0.02% (v/v) Silwet L-77 in sterile water) was used. Inoculation was done twice (8h intervals) and plants were kept covered with a transparent plastic lid for 2 days. Bacterial colonisation was analysed by quantifying GFP fluorescence in abaxial leaf surface using a Typhoon FLA9500 laser scanner (GE Healthcare) and ImageJ analysis. Plant disease was followed after the infection using ChlF imaging through  $F_v/F_m$  measurements of whole-rosettes, as described above. A response ratio of  $F_v/F_m$  was calculated as the relative ratio of *Pst*-infected plants compared to mock-treated plants followed (*Pst*-Mock)/Mock. In independent experiments, *Pst pv tomato* DC3000, grown overnight at 28°C to  $\text{OD}_{600} = 0.2$  in King's B medium supplemented with 50  $\mu\text{g mL}^{-1}$  of rifampicin, was infiltrated at a density of  $1 \times 10^4$  cfu  $\text{mL}^{-1}$  in 10 mM  $\text{MgCl}_2$  in leaf tissue with a needleless syringe. Middle age leaves (fourth or fifth leaves from young to old) of 6-week-old plants,

grown under short day conditions, were used for infiltration. Bacterial growth (cfu cm<sup>-2</sup>) was measured in two discs per leaf after extracting bacteria. For this purpose, leaf discs were incubated in 70% ethanol for 1 min, dried on filter paper, subsequently washed briefly washing in water for 1 min, again dried on filter paper and then homogenized in 200  $\mu$ L of 10 mM MgCl<sub>2</sub>. Subsequent serial dilutions and plating on LB-plates with 50  $\mu$ g mL<sup>-1</sup> of cycloheximide and 50  $\mu$ g mL<sup>-1</sup> of rifampicin were performed by using multichannel pipettes.

### Statistical analyses

PCAs were performed on developmental or metabolite values to focus on genotypic effects at a given developmental stage [58].

To analyze the potential interaction between *REV* and *WRKY53* on the different traits measured, we considered that all individuals can be described by two factors: *REV* (functional vs knock-out allele) and *WRKY53* (functional vs knock-out allele). Col-0 is functional at both genes. The single-point mutants, *rev5* and *wrky53*, are knock-out in the corresponding gene (*REV* and *WRKY53*, respectively) but wild-type in the other, while the double knock-out mutant (*wrky53rev5*) is mutated in both genes. The effects of the two factors, and their interaction, were tested by two-way ANOVA on log<sub>10</sub>-transformed values of the different traits over the development. The genetic interaction was tested for metabolic traits at 15 days after flowering. For pathogen susceptibility, the interaction was tested using bacterial growth (cfu cm<sup>-2</sup>) at 4 days after infection (DAI).

Metabolite patterns (heat map) of mutants were analysed using response ratio, calculated between log-transformed values of Col-0 and a mutant at a given stage. A hierarchical cluster diagram was constructed using Manhattan distances and Ward's hierarchical clustering method.

Comparisons of mean trait values between genotypes were performed using Kruskal–Wallis nonparametric tests for developmental analysis. All analyses were performed using R software (3.4.3 v.; R Development Core Team, 2012).

### Supporting information

**S1 Table. Loadings of the variables included in the PCA on mean of metabolite abundance values.** Percentages indicate the percentage the total variance explained in the three first principal components (PC). Loadings are correlation coefficients between the variables and PCs.

DM = dry mass.

(DOCX)

**S2 Table. Coefficients of genetic interaction between *REV* and *WRKY53* on metabolic, developmental and immune traits.** Genetic interaction was analyzed by two-way ANOVA performed on log<sub>10</sub>-transformed values of the different traits over the development. Metabolic compounds values were used at 15 days after flowering (F+15) and pathogen susceptibility was analyzed at 4 days after infection (DAI). The coefficient represents the effect of the presence of a single functional allele (*REV* or *WRKY53*), or both functional alleles *REV*\* *WRKY53*, compared to mutated alleles. The *p*-value indicates the significance of the genetic interaction: ns = non significant, .:  $P \leq 0.1$ , \*:  $P \leq 0.05$ , \*\*:  $P \leq 0.001$ , and \*\*\*:  $P \leq 0.0001$ . B = bolting, F = flowering, F+10d = 10 days after flowering and S = mature silique stage; SA bound = total SA after hydrolysis—free SA, SA conjugates = SA-(C6)-glycosides, DHBA = dihydroxybenzoic acid; DHBA bound = Total DHBA after hydrolysis—free DHBA; cfu = colony forming units.

(DOCX)



**S3 Table. Loadings of the variables included in the PCA on mean of 14 growth-related traits values.** Percentages indicate the percentage of the total variance explained in the three first principal components (PC). Loadings are correlation coefficients between the variables and PCs.

(DOCX)

**S4 Table. List of primers used.**

(DOCX)

**S1 Fig. Percentage of senescent area by leaf position of the different mutants compared to Col-0.** (A) Percentage of senescent area displayed at 10 days and (B) 15 days after flowering. Senescent area was calculated by the ratio between pixel number for  $F_v/F_m \leq 0.6$  and the total pixel number of the rosette. Black line means wild-type Col-0, colours show mutants. Data are means ( $\pm$  SE) of 5 plants.

(TIF)

**S2 Fig. Abundances of main metabolites explaining the most significant effects in PCA at 15 days after flowering.** (A) camalexin, (B) salicylic acid (SA), (C) abscisic acid (ABA), (D) malate, (E) jasmonic acid (JA), (F) dihydroxybenzoic acid (DHBA) xylose and (G) SA conjugates. Data are means ( $\pm$ SE) of 5 plants. Different letters indicate significant differences between means following Kruskal-Wallis tests ( $P < 0.05$ ). DM = dry mass; SA conjugates = SA-(C6)-glycosides.

(TIF)

**S3 Fig. Principal component analysis on multiple growth-related traits measured on *REV* and *WRKY53* mutants.** (A) Representation of the variables, measured at 10 days after flowering, on the two first principal components. DM = dry mass; RLP = rate of leaf production;  $R_{max}$  = maximum rate of leaf expansion; SLA = specific leaf area;  $F_v/F_m$  = maximum quantum yield of photosystem II. (B) Projection of individual plants with centres of gravity per genotype ( $n = 5$ ). Ellipses represent inertia ellipses, centred on the means for each genotype. Their width and height are given by 1.5 times the standard deviation of the coordinates on axes, and the covariance sets the slope of the main axis [58]. *rev5* and *wrky53* are single knock-out of the *REV* and *WRKY53* genes, respectively. *wrky53rev5* is double knock-out (Xie et al., 2014). *rev10-d* a semi-dominant gain-of-function of *REV* allele where *REV* mRNA is rendered resistant to the negative regulation by microRNAs [27].

(TIF)

**S4 Fig. Pathogen assays.** 16-day-old plants were infected with *Pseudomonas syringae* (*Pst*) pv *tomato* DC3000, constitutively expressing GFP by spraying a *Pst* suspension on leaf surfaces. (A) Response ratio of photosynthetic efficiency ( $F_v/F_m$ ) during days after infection (DAI), calculated as the relative ratio of *Pst*-infected plants compared to mock-treated plants (*Pst*-Mock)/Mock. (B) Quantification of bacterial growth *in planta* expressed in GFP units per rosette area compared to the respective mock condition. Data are means ( $\pm$  SE) of 3–5 plants per condition.

(TIF)

**S1 File. Additional informations about targeted metabolomic, untargeted metabolomic and GC-MS analyses were provided in this file.**

(DOCX)

**S1 Dataset.**

(XLSX)

## Acknowledgments

We thank Manuela Freund, Julian Fratte and Gesine Seibold for their technical support. We thank Brian H. Kvitko and Emanuele Scacchi for providing us the line of *Pseudomonas syringae* pv *tomato* DC3000 attTn7-egfpmut3 constitutively expressing GFP.

## Author Contributions

**Conceptualization:** Justine Bresson, Ulrike Zentgraf.

**Data curation:** Justine Bresson, Jasmin Doll, Mark Stahl, Edda von Roepenack-Lahaye, Joachim Kilian, Bettina Stadelhofer.

**Formal analysis:** Justine Bresson, François Vasseur.

**Funding acquisition:** Justine Bresson, Ulrike Zentgraf.

**Investigation:** Justine Bresson, Jasmin Doll, Mark Stahl, Edda von Roepenack-Lahaye, Joachim Kilian, Bettina Stadelhofer, Dagmar Kolb.

**Methodology:** Justine Bresson, Jasmin Doll.

**Resources:** James M. Kremer.

**Supervision:** Stephan Wenkel, Ulrike Zentgraf.

**Validation:** Ulrike Zentgraf.

**Writing – original draft:** Justine Bresson, François Vasseur.

**Writing – review & editing:** Justine Bresson, Jasmin Doll, François Vasseur, Mark Stahl, Edda von Roepenack-Lahaye, Joachim Kilian, Bettina Stadelhofer, Dagmar Kolb, Stephan Wenkel, Ulrike Zentgraf.

## References

1. Wingler A, Purdy S, MacLean JA, Pourtau N. The role of sugars in integrating environmental signals during the regulation of leaf senescence. *J Exp Bot.* 2006; 57: 391–399. <https://doi.org/10.1093/jxb/eri279> PMID: 16157653
2. Häffner E, Konietzki S, Diederichsen E. Keeping Control: The Role of Senescence and Development in Plant Pathogenesis and Defense. *Plants.* 2015; 4: 449–488. <https://doi.org/10.3390/plants4030449> PMID: 27135337
3. Zentgraf U, Jobst J, Kolb D, Rentsch D. Senescence-Related Gene Expression Profiles of Rosette Leaves of *Arabidopsis thaliana*: Leaf Age Versus Plant Age. *Plant Biol.* 2004; 6: 178–183. <https://doi.org/10.1055/s-2004-815735> PMID: 15045669
4. Thomas H. Senescence, ageing and death of the whole plant. *New Phytol.* 2013; 197: 696–711. <https://doi.org/10.1111/nph.12047> PMID: 23176101
5. Lim PO, Kim HJ, Nam HG. Leaf Senescence. *Annu Rev Plant Biol.* 2007; 58: 115–136. <https://doi.org/10.1146/annurev.arplant.57.032905.105316> PMID: 17177638
6. Breeze E, Harrison E, McHattie S, Hughes L, Hickman R, Hill C, et al. High-Resolution Temporal Profiling of Transcripts during Arabidopsis Leaf Senescence Reveals a Distinct Chronology of Processes and Regulation. *Plant Cell.* 2011; 23: 873–894. <https://doi.org/10.1105/tpc.111.083345> PMID: 21447789
7. Havé M, Marmagne A, Chardon F, Masclaux-Daubresse C. Nitrogen remobilization during leaf senescence: lessons from Arabidopsis to crops. *J Exp Bot.* 2017; 68: 2513–2529. <https://doi.org/10.1093/jxb/erw365> PMID: 27707774
8. Guo Y, Gan S. Convergence and divergence in gene expression profiles induced by leaf senescence and 27 senescence-promoting hormonal, pathological and environmental stress treatments. *Plant Cell Environ.* 2011; 35: 644–655. <https://doi.org/10.1111/j.1365-3040.2011.02442.x> PMID: 21988545

9. Quirino BF, Normanly J, Amasino RM. Diverse range of gene activity during *Arabidopsis thaliana* leaf senescence includes pathogen-independent induction of defense-related genes. *Plant Mol Biol*. 1999; 40: 267–278. <https://doi.org/10.1023/a:1006199932265> PMID: 10412905
10. Dhar N, Caruana J, Erdem I, Subbarao KV, Klosterman SJ, Raina R. The *Arabidopsis* SENESCENCE-ASSOCIATED GENE 13 Regulates Dark-Induced Senescence and Plays Contrasting Roles in Defense Against Bacterial and Fungal Pathogens. *Mol Plant-Microbe Interact MPMI*. 2020; 33: 754–766. <https://doi.org/10.1094/MPMI-11-19-0329-R> PMID: 32065029
11. Huot B, Yao J, Montgomery BL, He SY. Growth–Defense Tradeoffs in Plants: A Balancing Act to Optimize Fitness. *Mol Plant*. 2014; 7: 1267–1287. <https://doi.org/10.1093/mp/ssu049> PMID: 24777989
12. Morris K, A. -H. -Mackerness S, Page T, John CF, Murphy AM, Carr JP, et al. Salicylic acid has a role in regulating gene expression during leaf senescence. *Plant J*. 2000; 23: 677–685. <https://doi.org/10.1046/j.1365-313x.2000.00836.x> PMID: 10972893
13. Pourtau N, Marès M, Purdy S, Quentin N, Ruël A, Wingler A. Interactions of abscisic acid and sugar signalling in the regulation of leaf senescence. *Planta*. 2004; 219: 765–772. <https://doi.org/10.1007/s00425-004-1279-5> PMID: 15118859
14. He Y, Fukushige H, Hildebrand DF, Gan S. Evidence Supporting a Role of Jasmonic Acid in *Arabidopsis* Leaf Senescence. *Plant Physiol*. 2002; 128: 876–884. <https://doi.org/10.1104/pp.010843> PMID: 11891244
15. Guo Y, Cai Z, Gan S. Transcriptome of *Arabidopsis* leaf senescence. *Plant Cell Environ*. 2004; 27: 521–549. <https://doi.org/10.1111/j.1365-3040.2003.01158.x>
16. Eulgem T, Somssich IE. Networks of WRKY transcription factors in defense signaling. *Curr Opin Plant Biol*. 2007; 10: 366–371. <https://doi.org/10.1016/j.pbi.2007.04.020> PMID: 17644023
17. Pandey SP, Somssich IE. The Role of WRKY Transcription Factors in Plant Immunity. *Plant Physiol*. 2009; 150: 1648–1655. <https://doi.org/10.1104/pp.109.138990> PMID: 19420325
18. Zentgraf U, Laun T, Miao Y. The complex regulation of WRKY53 during leaf senescence of *Arabidopsis thaliana*. *Eur J Cell Biol*. 2010; 89: 133–137. <https://doi.org/10.1016/j.ejcb.2009.10.014> PMID: 20004496
19. Miao Y, Laun T, Zimmermann P, Zentgraf U. Targets of the WRKY53 transcription factor and its role during leaf senescence in *Arabidopsis*. *Plant Mol Biol*. 2004; 55: 853–867. <https://doi.org/10.1007/s11103-004-2142-6> PMID: 15604721
20. Murray SL, Ingle RA, Petersen LN, Denby KJ. Basal Resistance Against *Pseudomonas syringae* in *Arabidopsis* Involves WRKY53 and a Protein with Homology to a Nematode Resistance Protein. *Mol Plant Microbe Interact*. 2007; 20: 1431–1438. <https://doi.org/10.1094/MPMI-20-11-1431> PMID: 17977154
21. Hu Y, Dong Q, Yu D. *Arabidopsis* WRKY46 coordinates with WRKY70 and WRKY53 in basal resistance against pathogen *Pseudomonas syringae*. *Plant Sci*. 2012; 185–186: 288–297. <https://doi.org/10.1016/j.plantsci.2011.10.006> PMID: 22325880
22. Hu J, Barlet X, Deslandes L, Hirsch J, Feng DX, Somssich I, et al. Transcriptional Responses of *Arabidopsis thaliana* during Wilt Disease Caused by the Soil-Borne *Phytopathogenic Bacterium, Ralstonia solanacearum*. *PLoS ONE*. 2008; 3. <https://doi.org/10.1371/journal.pone.0002589> PMID: 18596930
23. Miao Y, Zentgraf U. The Antagonist Function of *Arabidopsis* WRKY53 and ESR/ESP in Leaf Senescence Is Modulated by the Jasmonic and Salicylic Acid Equilibrium. *Plant Cell*. 2007; 19: 819–830. <https://doi.org/10.1105/tpc.106.042705> PMID: 17369373
24. Miao Y, Laun TM, Smykowski A, Zentgraf U. *Arabidopsis* MEKK1 can take a short cut: it can directly interact with senescence-related WRKY53 transcription factor on the protein level and can bind to its promoter. *Plant Mol Biol*. 2007; 65: 63–76. <https://doi.org/10.1007/s11103-007-9198-z> PMID: 17587183
25. Xie Y, Huhn K, Brandt R, Potschin M, Bieker S, Straub D, et al. REVOLUTA and WRKY53 connect early and late leaf development in *Arabidopsis*. *Development*. 2014; 141: 4772. <https://doi.org/10.1242/dev.117689> PMID: 25395454
26. Talbert PB, Adler HT, Parks DW, Comai L. The REVOLUTA gene is necessary for apical meristem development and for limiting cell divisions in the leaves and stems of *Arabidopsis thaliana*. *Development*. 1995; 121: 2723–2735. <https://doi.org/10.1242/dev.121.9.2723> PMID: 7555701
27. Otsuga D, DeGuzman B, Prigge MJ, Drews GN, Clark SE. REVOLUTA regulates meristem initiation at lateral positions. *Plant J Cell Mol Biol*. 2001; 25: 223–236. <https://doi.org/10.1046/j.1365-313x.2001.00959.x> PMID: 11169198
28. Emery JF, Floyd SK, Alvarez J, Eshed Y, Hawker NP, Izhaki A, et al. Radial Patterning of *Arabidopsis* Shoots by Class III HD-ZIP and KANADI Genes. *Curr Biol*. 2003; 13: 1768–1774. <https://doi.org/10.1016/j.cub.2003.09.035> PMID: 14561401

29. Juarez MT, Kui JS, Thomas J, Heller BA, Timmermans MCP. microRNA-mediated repression of *rolled leaf1* specifies maize leaf polarity. *Nature*. 2004; 428: 84–88. <https://doi.org/10.1038/nature02363> PMID: 14999285
30. Wenkel S, Emery J, Hou B-H, Evans MMS, Barton MK. A Feedback Regulatory Module Formed by LITTLE ZIPPER and HD-ZIPIII Genes. *Plant Cell*. 2007; 19: 3379–3390. <https://doi.org/10.1105/tpc.107.055772> PMID: 18055602
31. Hong S-Y, Botterweg-Paredes E, Doll J, Eguen T, Blaakmeer A, Matton S, et al. Multi-level analysis of the interactions between REVOLUTA and MORE AXILLARY BRANCHES 2 in controlling plant development reveals parallel, independent and antagonistic functions. *Development*. 2020; 147. <https://doi.org/10.1242/dev.183681> PMID: 32345745
32. Glawischning E. Camalexin. *Phytochemistry*. 2007; 68: 401–406. <https://doi.org/10.1016/j.phytochem.2006.12.005> PMID: 17217970
33. Zhang K, Halitschke R, Yin C, Liu C-J, Gan S-S. Salicylic acid 3-hydroxylase regulates Arabidopsis leaf longevity by mediating salicylic acid catabolism. *Proc Natl Acad Sci U S A*. 2013; 110: 14807–14812. <https://doi.org/10.1073/pnas.1302702110> PMID: 23959884
34. Nawrath C, Métraux J-P. Salicylic Acid Induction–Deficient Mutants of Arabidopsis Express PR-2 and PR-5 and Accumulate High Levels of Camalexin after Pathogen Inoculation. *Plant Cell*. 1999; 11: 1393–1404. <https://doi.org/10.1105/tpc.11.8.1393> PMID: 10449575
35. Gan S, Zhang K. Increasing leaf longevity and disease resistance by altering salicylic acid catabolism. US20160312239A1, 2016. Available: <https://patents.google.com/patent/US20160312239A1/en>
36. Brandt R, Salla-Martret M, Bou-Torrent J, Musielak T, Stahl M, Lanz C, et al. Genome-wide binding-site analysis of REVOLUTA reveals a link between leaf patterning and light-mediated growth responses. *Plant J*. 2012; 72: 31–42. <https://doi.org/10.1111/j.1365-313X.2012.05049.x> PMID: 22578006
37. Rushton PJ, Somssich IE, Ringler P, Shen QJ. WRKY transcription factors. *Trends Plant Sci*. 2010; 15: 247–258. <https://doi.org/10.1016/j.tplants.2010.02.006> PMID: 20304701
38. Vasseur F, Bontpart T, Dauzat M, Granier C, Vile D. Multivariate genetic analysis of plant responses to water deficit and high temperature revealed contrasting adaptive strategies. *J Exp Bot*. 2014; 65: 6457–6469. <https://doi.org/10.1093/jxb/eru364> PMID: 25246443
39. Zentgraf U, Doll J. Arabidopsis WRKY53, a Node of Multi-Layer Regulation in the Network of Senescence. *Plants*. 2019; 8: 578. <https://doi.org/10.3390/plants8120578>
40. Wildermuth MC, Dewdney J, Wu G, Ausubel FM. Isochorismate synthase is required to synthesize salicylic acid for plant defence. *Nature*. 2001; 414: 562–565. <https://doi.org/10.1038/35107108> PMID: 11734859
41. Garcion C, Lohmann A, Lamodièrre E, Catinot J, Buchala A, Doermann P, et al. Characterization and Biological Function of the *ISOCHORISMATE SYNTHASE2* Gene of Arabidopsis. *Plant Physiol*. 2008; 147: 1279–1287. <https://doi.org/10.1104/pp.108.119420> PMID: 18451262
42. Dean JV, Mohammed LA, Fitzpatrick T. The formation, vacuolar localization, and tonoplast transport of salicylic acid glucose conjugates in tobacco cell suspension cultures. *Planta*. 2005; 221: 287–296. <https://doi.org/10.1007/s00425-004-1430-3> PMID: 15871031
43. Vaca E, Behrens C, Theccanat T, Choe J-Y, Dean JV. Mechanistic differences in the uptake of salicylic acid glucose conjugates by vacuolar membrane-enriched vesicles isolated from *Arabidopsis thaliana*. *Physiol Plant*. 2017; 161: 322–338. <https://doi.org/10.1111/ppl.12602> PMID: 28665551
44. Bartsch M, Bednarek P, Vivancos PD, Schneider B, Roepenack-Lahaye E von, Foyer CH, et al. Accumulation of Isochorismate-derived 2,3-Dihydroxybenzoic 3-O-β-d-Xyloside in Arabidopsis Resistance to Pathogens and Ageing of Leaves. *J Biol Chem*. 2010; 285: 25654–25665. <https://doi.org/10.1074/jbc.M1109.092569> PMID: 20538606
45. Rivas-San Vicente M, Plasencia J. Salicylic acid beyond defence: its role in plant growth and development. *J Exp Bot*. 2011; 62: 3321–3338. <https://doi.org/10.1093/jxb/err031> PMID: 21357767
46. Wasternack C, Hause B. Jasmonates: biosynthesis, perception, signal transduction and action in plant stress response, growth and development. An update to the 2007 review in *Annals of Botany*. *Ann Bot*. 2013; 111: 1021–1058. <https://doi.org/10.1093/aob/mct067> PMID: 23558912
47. Karasov TL, Kniskern JM, Gao L, DeYoung BJ, Ding J, Dubiella U, et al. The long-term maintenance of a resistance polymorphism through diffuse interactions. *Nature*. 2014; 512: 436–440. <https://doi.org/10.1038/nature13439> PMID: 25043057
48. Ausubel FM, Katagiri F, Mindrinos M, Glazebrook J. Use of Arabidopsis thaliana defense-related mutants to dissect the plant response to pathogens. *Proc Natl Acad Sci*. 1995; 92: 4189–4196. <https://doi.org/10.1073/pnas.92.10.4189> PMID: 7753782

49. Bresson J, Bieker S, Riester L, Doll J, Zentgraf U. A guideline for leaf senescence analyses: from quantification to physiological and molecular investigations. *J Exp Bot*. 2018; 69: 769–786. <https://doi.org/10.1093/jxb/erx246> PMID: 28992225
50. Boyes DC, Zayed AM, Ascenzi R, McCaskill AJ, Hoffman NE, Davis KR, et al. Growth Stage–Based Phenotypic Analysis of Arabidopsis: A Model for High Throughput Functional Genomics in Plants. *Plant Cell*. 2001; 13: 1499–1510. <https://doi.org/10.1105/tpc.010011> PMID: 11449047
51. Bresson J, Vasseur F, Dauzat M, Koch G, Granier C, Vile D. Quantifying spatial heterogeneity of chlorophyll fluorescence during plant growth and in response to water stress. *Plant Methods*. 2015; 11: 23. <https://doi.org/10.1186/s13007-015-0067-5> PMID: 25870650
52. Rousseau C, Belin E, Bove E, Rousseau D, Fabre F, Berruyer R, et al. High throughput quantitative phenotyping of plant resistance using chlorophyll fluorescence image analysis. *Plant Methods*. 2013; 9: 17. <https://doi.org/10.1186/1746-4811-9-17> PMID: 23758798
53. Pfaffl MW. A new mathematical model for relative quantification in real-time RT–PCR. *Nucleic Acids Res*. 2001; 29: e45–e45. <https://doi.org/10.1093/nar/29.9.e45> PMID: 11328886
54. Francis KE, Spiker S. Identification of *Arabidopsis thaliana* transformants without selection reveals a high occurrence of silenced T-DNA integrations. *Plant J*. 2005; 41: 464–477. <https://doi.org/10.1111/j.1365-3113.2004.02312.x> PMID: 15659104
55. Bradford MM. A rapid and sensitive method for the quantitation of microgram quantities of protein utilizing the principle of protein-dye binding. *Anal Biochem*. 1976; 72: 248–254. <https://doi.org/10.1006/abio.1976.9999> PMID: 942051
56. Teal TK, Lies DP, Wold BJ, Newman DK. Spatiometabolic stratification of *Shewanella oneidensis* biofilms. *Appl Environ Microbiol*. 2006; 72: 7324–7330. <https://doi.org/10.1128/AEM.01163-06> PMID: 16936048
57. Stice SP, Thao KK, Khang CH, Baltrus DA, Dutta B, Kvitko BH. Thiosulfinate Tolerance Is a Virulence Strategy of an Atypical Bacterial Pathogen of Onion. *Curr Biol*. 2020; 30: 3130–3140.e6. <https://doi.org/10.1016/j.cub.2020.05.092> PMID: 32619480
58. Chessel D, Dufour AB, Thioulouse J. The ade4 package—1-One-table methods. *R News*. 2004; 4: 5–10.