



HAL
open science

Application of a precision feeding strategy for gestating SOWS

Charlotte Gaillard, Jean-Yves Dourmad

► **To cite this version:**

Charlotte Gaillard, Jean-Yves Dourmad. Application of a precision feeding strategy for gestating sows. *Animal Feed Science and Technology*, 2022, 287, pp.115280. 10.1016/j.anifeedsci.2022.115280 . hal-03692301

HAL Id: hal-03692301

<https://hal.inrae.fr/hal-03692301v1>

Submitted on 9 Jun 2022

HAL is a multi-disciplinary open access archive for the deposit and dissemination of scientific research documents, whether they are published or not. The documents may come from teaching and research institutions in France or abroad, or from public or private research centers.

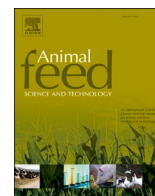
L'archive ouverte pluridisciplinaire **HAL**, est destinée au dépôt et à la diffusion de documents scientifiques de niveau recherche, publiés ou non, émanant des établissements d'enseignement et de recherche français ou étrangers, des laboratoires publics ou privés.



Distributed under a Creative Commons Attribution 4.0 International License

Contents lists available at [ScienceDirect](https://www.sciencedirect.com)

Animal Feed Science and Technology

journal homepage: www.elsevier.com/locate/anifeedsci

Application of a precision feeding strategy for gestating sows

Charlotte Gaillard^{*}, Jean-Yves Dourmad

Institut Agro, PEGASE, INRAE, 35590 Saint Gilles, France

ARTICLE INFO

Keywords:

Feed cost
Feeding behavior
Lysine intake
Precision feeding
Reproductive performance

ABSTRACT

Simulations of precision feeding (PF) in which gestating sows were individually fed a daily mixture of two diets with different amino acid contents indicated a reduction in protein intake, feed costs, and environmental losses compared to sows fed a conventional single diet (CF). These results have not been verified on farm. Thus, the objective of the present study was to compare the effect of this PF strategy on productive and reproductive performances of gestating sows compared to the CF strategy. As the effects of such a strategy has not been reported yet on sows' feeding behavior (frequency of visits and time spent in the feeder), it constituted the second objective of this study. The experiment included 131 gestating sows divided into the two feeding strategies regarding their parity and body weight at insemination. Feed supply was similar for the two strategies. The results matched those from simulations as sows fed the PF strategy reduced their lysine ingestion of around 25%, which therefore reduced nitrogen excretion of 18.5%, and feed costs by 3.4 euros per gestation or 8 euros per ton of feed. Phosphorus intake and excretion were also reduced with PF compared to CF (around 8% and 9%, respectively). Reproductive performance, defined as the number of piglets per litter and the litter weight, was not affected by the feeding strategy. All sows usually ate their daily ration in one "feeding visit." The PF sows did a constant number of "non-feeding visits" to the feeder during gestation (on average 4.25 visits/d), while the CF sows did more non-feeding visits at the beginning of the gestation (on average 4.42 visits/d) and less at the end of the gestation (on average 3.69 visits/d) than the PF sows ($P < 0.01$). The sows spent 54% of their daily time in the feeder for feeding visits, and 46% for non-feeding visits. The PF sows spent more daily time for non-feeding visits than CF sows (32.4 vs. 29.7 min/d, respectively, $P < 0.01$). Time spent at the feeder for feeding visits or non-feeding visits was constant over the gestation for the CF sows (35.3 and 29.2 min/d, respectively) while for the PF sows it increased over gestation. In conclusion, the PF strategy can be used to reduce lysine intake without influencing reproductive performance while reducing protein intake and feed costs. Feeding behaviors were barely affected by the feeding strategies but may serve as management indicators to detect sick or injured animals.

Abbreviations: AA, Amino Acid; AF, age at farrowing; BT, backfat thickness; BW, body weight; BWt, target of maternal BW at farrowing; CF, conventional feeding; H diet, a high lysine content diet 8.5 g SID Lys / kg of feed; L diet, a low lysine content diet with 3.3 g of SID Lys / kg of feed; PF, precision feeding; SID Lys, standardized ileal digestible lysine.

^{*} Corresponding author.

E-mail address: charlotte.gaillard@inrae.fr (C. Gaillard).

<https://doi.org/10.1016/j.anifeedsci.2022.115280>

Received 13 August 2021; Received in revised form 14 March 2022; Accepted 18 March 2022

Available online 23 March 2022

0377-8401/© 2022 The Author(s). Published by Elsevier B.V. This is an open access article under the CC BY license (<http://creativecommons.org/licenses/by/4.0/>).

1. Introduction

Gestating sows are often fed with the same standard diet during their gestation even though their nutrient requirements vary during gestation and among sows (McPherson et al., 2004; Dourmad et al., 2008; Gaillard et al., 2020). Only feed allowance is sometimes adjusted regarding the parity, gestation stage, and body condition (Young et al., 2004). In all cases, this group feeding strategy leads to protein and minerals under- or over-feeding situations which may result in a lack of performance and health issues on the one hand, and economic loss and environmental negative effects on the other. To reduce environmental load and feed costs, new feeding strategies have been developed in pig production (Dourmad et al., 2015; Andretta et al., 2016). Combined with improved nutritional models, smart feeders are now able to offer a daily amino acid (AA)-adjusted ration to each animal regarding its nutrient requirements. Using a simulation approach based on farm databases Gaillard et al. (2020) evaluated the potential of such a precision feeding (PF) strategy for gestating sows (individual and daily mixing of two diets with different AA content) compared to a conventional feeding (CF) strategy (a single diet with a fixed AA content). Simulations indicated that PF appeared to be relevant to better meet the AA requirement and that, compared to a CF strategy, it reduced feed costs by 3.6%, lysine intake by 30%, and nitrogen and phosphorus excretion by 17% and 15%, respectively (Gaillard et al., 2020). However, these simulations results have not been verified experimentally. Moreover, they do not allow to evaluate the effects of such a PF strategy on reproductive performance or feeding behaviors. Indeed, animals housed in group with feeding stations are subjected to feed competition. Due to physiological (i.e., hormonal circadian rhythm) or management (i.e., start of a new feeding day) factors, popularity of certain times for feeding can be increased, leading to an

Table 1
Ingredients and composition of the two diets used in the experiment as-fed basis, one with a low lysine content (L diet) and one with a higher lysine content (H diet).

| | L diet | H diet |
|--|--------|--------|
| <i>Ingredients, g/kg</i> | | |
| Barley | 400 | 256 |
| Wheat | 255 | 257 |
| Maize | 100 | 120 |
| Wheat bran | 150 | 100 |
| Soybean meal (45% CP) | – | 180 |
| Rapeseed oil | 20.0 | 20.0 |
| Sugar beet pulp | 50.0 | – |
| Molasses | – | 30.0 |
| Monocalcium phosphate | 2.00 | 6.50 |
| Calcium carbonate | 11.5 | 15.5 |
| Salt (sodium chloride) | 4.50 | 4.50 |
| Acidifying agent | 1.00 | 1.00 |
| L-Lysine HCl | 0.70 | 2.50 |
| DL-Methionine | – | 0.40 |
| L-Threonine | – | 1.40 |
| L-Valine | – | 0.40 |
| Trace elements and vitamins ¹ | 5.00 | 5.00 |
| <i>Analyzed composition, g/kg</i> | | |
| Dry matter | 904 | 896 |
| CP ² | 108 | 182 |
| Crude fat | 42.3 | 39.9 |
| Crude fiber | 53.6 | 39.9 |
| NDF | 162 | 140 |
| ADF | 45.8 | 36.2 |
| ADL | 9.20 | 7.20 |
| Lysine content | 4.74 | 9.18 |
| Phosphorus content | 4.87 | 6.24 |
| <i>Calculated composition, g/kg</i> | | |
| Lysine content | 4.34 | 9.64 |
| SID lysine | 3.30 | 8.50 |
| Total phosphorus | 4.43 | 5.62 |
| STTD-P | 2.31 | 3.27 |
| Total calcium | 7.38 | 9.79 |
| <i>Energy, MJ/kg</i> | | |
| Gross energy | 16.5 | 16.3 |
| Metabolizable energy | 12.7 | 13.0 |

¹ Provided the following amounts of vitamins, trace elements and enzymes in units per kg: vitamins: A = 10,000 IU; D₃ = 1500 IU; E = 45 IU; biotin = 0.2 mg; Oligo-elements: Cu (E4 sulfate) = 10 mg; Zn (E6 oxide) = 100 mg; Mn (E5 oxide) = 40 mg; Fe (E1 carnionate) = 24 mg; Fe (E1 hepta sulfate) = 28.2 mg; Fe (E1 mono sulfate) = 27.5 mg; I (E2 calcium iodate) = 0.60 mg; Se (E3 sodium selenite) = 0.25 mg; Enzyme: phytase (E 1600) = 500 FTU.

² Abbreviations: CP, crude protein; NDF, Neutral Detergent Fiber; ADF, Acid Detergent Fiber; ADL, Acid Detergent Lignin; SID Lysine, standardized ileal digestible lysine; STTD-P, standardized total tract digestible phosphorus.

increased competition for feed and risks of conflicts between animals. The model of Boumans et al. (2018) showed that the pig and diet characteristics interact with the group size and affect daily feeding patterns (e.g., feed intake and feeding time) as well as the frequency of conflicts around the feeder. Moreover, variations of the time spent waiting in front of the feeder or visiting it will impact the sows' energy requirements, as time standing is considered to require twice more energy than lying (Noblet et al., 1993).

Therefore, the objectives of the present study were to evaluate experimentally the effects of a PF strategy on productive and reproductive performances of gestating sows, and to report any effect of such a strategy on feeding behaviors. We hypothesized that compared to a CF strategy, a PF strategy will reduce feed costs and nutrient excretion without affecting sows' reproductive performance, and might affect sows' feeding behavior as diet characteristics will vary over gestation.

2. Material and methods

2.1. Experimental facilities and animals

The Ethics Committee in Animal Experimentation in Rennes, France, reviewed and approved the protocol for the experiment (reference APAFiS #20619). The experiment was carried out from June 2019 to June 2020, at the Pig Physiology and Phenotyping Experimental Facility, Saint-Gilles, France (doi: 10.15454/1.5573932732039927E12). Initially, a total of 170 Landrace × Large White gestating sows were involved in the experiment and moved to gestation rooms 3–4 days after insemination. However, in early gestation, 37 sows were found out not pregnant at confirmation, and 2 sows were sick. Therefore, these 39 sows were taken out of their group pen when detected non-pregnant or sick. The sows were initially equally distributed between the two feeding strategies described below. Thus, finally 131 gestations from 97 multiparous and 34 primiparous were fully followed and their data analyzed. Each of the eight groups of gestating sows was housed in a pen of 7.5 × 8.0 m, with free access to water (2 drinking troughs), and to 2 automatic feeders (Gestal, JYGA Technologies Inc., Québec, Canada) allowing the individual mixture of two diets. Every morning fresh straw was delivered in the resting areas of the pen.

2.2. Experimental design

As lysine is the first limiting AA in plant-based diets for sows, the two feeding strategies were based on the mixture of two diets with different standardized ileal digestible lysine (**SID Lys**) concentrations: a diet with a high lysine content (**H diet**, with 8.5 g SID Lys/kg of feed) and a diet with a low lysine content (**L diet**, with 3.3 g of SID Lys/kg of feed). For the CF strategy, the sows received a fixed mixture of the L and H diets (73% and 27%, respectively) during all the gestation, so a mixture with a fixed lysine content of 4.7 g SID Lys/kg of feed. For the PF strategy, the sows received an individualized mixture of L and H diets, varying over the gestation according to their requirements. Ingredients and composition of L and H diets are presented in Table 1.

Calculations of individual feed allowance for all sows and diets proportions for the PF sows were done with an improved version of InraPorc model, previously evaluated by running simulations with PF strategy for gestating sows (Gaillard et al., 2020). The model first calculates the requirement estimates in energy, AA, and minerals of each animal and then determines the ration's quantity and composition to be distributed. These calculations take into account individual characteristics like sow's age, maternal body weight (**BW**) and backfat thickness (**BT**) at insemination as well as their targets at farrowing. The same 19 mm BT target was used for all sows. Target of maternal BW at farrowing (**BW_t**, in kg) was defined according to sows' age at farrowing (**AF**, in days) and a growth curve specific for the genotype and adjusted from historical data from the same herd. The detailed approach is described in Gaillard et al. (2019, 2020).

Expected litter size and litter weight at birth are also estimated according to the previous year average performance measured per parity in the same herd.

Furthermore, once the total gestation feed allowance had been calculated for each sow, a bump feeding strategy was applied to obtain a higher allowance of 500 g from 86 days until the end of gestation. The sows of the same group were allocated to one of the two feeding strategies according to parity, BW and BT at insemination.

2.3. Recordings and calculations

The automatic feeders allow the identification of the sow entering the feeder and the recording of the time of each visit to the feeder, as well as the quantity of feed delivered during the visit. From these data, the daily number of visits per sow and the daily time spent at the feeder (in minutes) were calculated. Furthermore, the visits were distinguished between "feeding visits", when the sow received feed, and "non-feeding visits" when the sow did not receive feed because she had already eaten her daily ration.

The BW (kg) and BT (mm) of each sow were measured, with a manual weighing scale and an ultrasound portable device respectively, at insemination, at around 63 days of gestation, before farrowing (around 110 days), and after farrowing (up to 48 h after farrowing). During these measurements each sow was removed from the group pen and walked by herself into the scale in which she stayed 2 or 3 min to record her BW and measure her BT. The BT was an average of two measurements taken on the right and left side, 65 mm from the midline, on the back of the animal, by the same person each time.

The reproductive performance (litter size and weight) was recorded for each sow at farrowing, differentiating the total number of piglets and the number of alive piglets. Each piglet was weighted within a few hours after birth and litter weight was calculated.

Lysine and phosphorus retentions and excretions have been calculated using the equations reported in Gaillard et al. (2019), and Bikker and Blok (2017), respectively.

Table 2

Daily feed intake, proportion of low lysine content diet (L diet) in the ration, lysine intake, and gestation feed cost regarding feeding strategy (Str: CF vs. PF), parity (Par: Primiparous vs. Multiparous sows) and days of gestation (Day).

| Means | All sows | | Primi | | Multi | | SE | P-value | | | | | |
|--------------------------------|-----------------|------|-------|------|-------|------|-------|---------|---------|---------|-----------|-----------|-----------|
| | CF ¹ | PF | CF | PF | CF | PF | | Str | Par | Day | Str × Par | Str × Day | Par × Day |
| Number of sows | 66 | 65 | 17 | 17 | 49 | 48 | | | | | | | |
| <i>Daily feed intake, kg/d</i> | | | | | | | | | | | | | |
| Total over gestation | 2.92 | 2.93 | 2.61 | 2.66 | 3.01 | 3.02 | 0.043 | 0.948 | < 0.001 | < 0.001 | 0.549 | 0.157 | 0.503 |
| < 86 d | 2.79 | 2.81 | 2.49 | 2.54 | 2.89 | 2.90 | 0.043 | 0.860 | < 0.001 | 0.066 | 0.544 | 0.209 | 0.546 |
| ≥ 86 d | 3.29 | 3.31 | 2.99 | 3.04 | 3.39 | 3.40 | 0.043 | 0.890 | < 0.001 | < 0.001 | 0.544 | 0.541 | 0.541 |
| <i>Proportion of L diet, %</i> | | | | | | | | | | | | | |
| Total over gestation | 73.3 | 95.5 | 73.0 | 93.8 | 73.0 | 96.1 | 0.43 | < 0.001 | 0.217 | 0.034 | 0.004 | < 0.001 | < 0.001 |
| < 86 d | 73.4 | 99.5 | 73.0 | 99.0 | 73.0 | 99.7 | 0.32 | < 0.001 | 0.068 | < 0.001 | 0.318 | < 0.001 | < 0.001 |
| ≥ 86 d | 73.2 | 83.0 | 73.0 | 78.0 | 73.0 | 84.8 | 0.75 | < 0.001 | 0.011 | 0.291 | < 0.001 | < 0.001 | < 0.001 |
| <i>SID Lysine, g/kg</i> | | | | | | | | | | | | | |
| Total over gestation | 4.69 | 3.53 | 4.70 | 3.62 | 4.70 | 3.50 | 0.02 | < 0.001 | 0.217 | 0.034 | 0.004 | < 0.001 | < 0.001 |
| < 86 d | 4.68 | 3.32 | 4.70 | 3.31 | 4.70 | 3.35 | 0.01 | < 0.001 | 0.068 | < 0.001 | 0.318 | < 0.001 | < 0.001 |
| ≥ 86 d | 4.69 | 4.18 | 4.70 | 4.45 | 4.70 | 4.09 | 0.04 | < 0.001 | 0.011 | 0.291 | < 0.001 | < 0.001 | < 0.001 |
| <i>SID Lysine, g/d</i> | | | | | | | | | | | | | |
| Total over gestation | 13.7 | 10.4 | 12.3 | 9.74 | 14.1 | 10.7 | 0.19 | < 0.001 | < 0.001 | < 0.001 | 0.004 | < 0.001 | 0.209 |
| < 86 d | 13.1 | 9.33 | 11.7 | 8.51 | 13.6 | 9.61 | 0.19 | < 0.001 | < 0.001 | < 0.001 | 0.014 | < 0.001 | < 0.001 |
| ≥ 86 d | 15.5 | 13.8 | 14.1 | 13.5 | 15.9 | 13.9 | 0.24 | < 0.001 | < 0.001 | < 0.001 | < 0.001 | < 0.001 | < 0.001 |
| <i>Lysine retention, %</i> | | | | | | | | | | | | | |
| Total over gestation | 32.8 | 44.9 | 38.0 | 50.0 | 31.1 | 43.0 | 0.88 | < 0.001 | < 0.001 | < 0.001 | 0.974 | < 0.001 | < 0.001 |
| < 86 d | 29.7 | 42.9 | 35.6 | 49.2 | 27.7 | 40.7 | 0.72 | < 0.001 | < 0.001 | < 0.001 | 0.760 | < 0.001 | < 0.001 |
| ≥ 86 d | 41.9 | 50.7 | 45.1 | 52.2 | 40.9 | 50.1 | 0.34 | < 0.001 | < 0.001 | < 0.001 | 0.035 | < 0.001 | < 0.001 |
| N excretion, kg/gestation | 5.70 | 4.65 | 4.78 | 4.14 | 6.03 | 4.83 | 0.20 | < 0.001 | < 0.001 | – | 0.074 | – | – |
| <i>Feed cost</i> | | | | | | | | | | | | | |
| €/gestation | 91.9 | 88.5 | 80.0 | 79.3 | 96.1 | 91.7 | 3.63 | 0.150 | < 0.001 | – | 0.528 | – | – |
| €/ton | 268 | 260 | 269 | 261 | 268 | 260 | 0.17 | < 0.001 | 0.482 | – | 0.015 | – | – |

¹Abbreviations: CF, conventional feeding strategy; PF, precision feeding strategy; Primi, primiparous sows; Multi, multiparous sows; SID Lysine, standardized ileal digestible lysine; N, nitrogen; SE, standard error.

Estimated feed costs were based on average prices of feed ingredients observed in France over the first semester 2019 (IFIP, 2019), with the L diet cost being 259.05 €/ton and the H diet 294.25 €/ton.

2.4. Laboratory analysis

Diets H and L were sampled every three weeks in the automatic feeders. The samples were stored at 5 °C during the experiment. At the end of the experiment, 230 g of each of the 18 samples were sampled and the 9 samples of each diet mixed before being analyzed. Feed samples were analyzed for dry matter (standard NF V18–109, October 1982), ash (incineration at 550 °C), nitrogen (Dumas method, standard NF EN ISO 16634–1, 2008), Weende crude fiber (AOAC, 1990), gross energy (IKA adiabatic calorimeter, standard ISO 9831:1998) and phosphorus (Standard NF EN 15621, 2017). Cell wall fractions (neutral detergent fiber, acid detergent fiber and acid detergent lignin) were determined according to the method of Van Soest and Wine (1967). Feed samples were also characterized for their fat content (Standard AFNOR NF V18–104; June 1980) using petroleum extraction with prior acid hydrolysis.

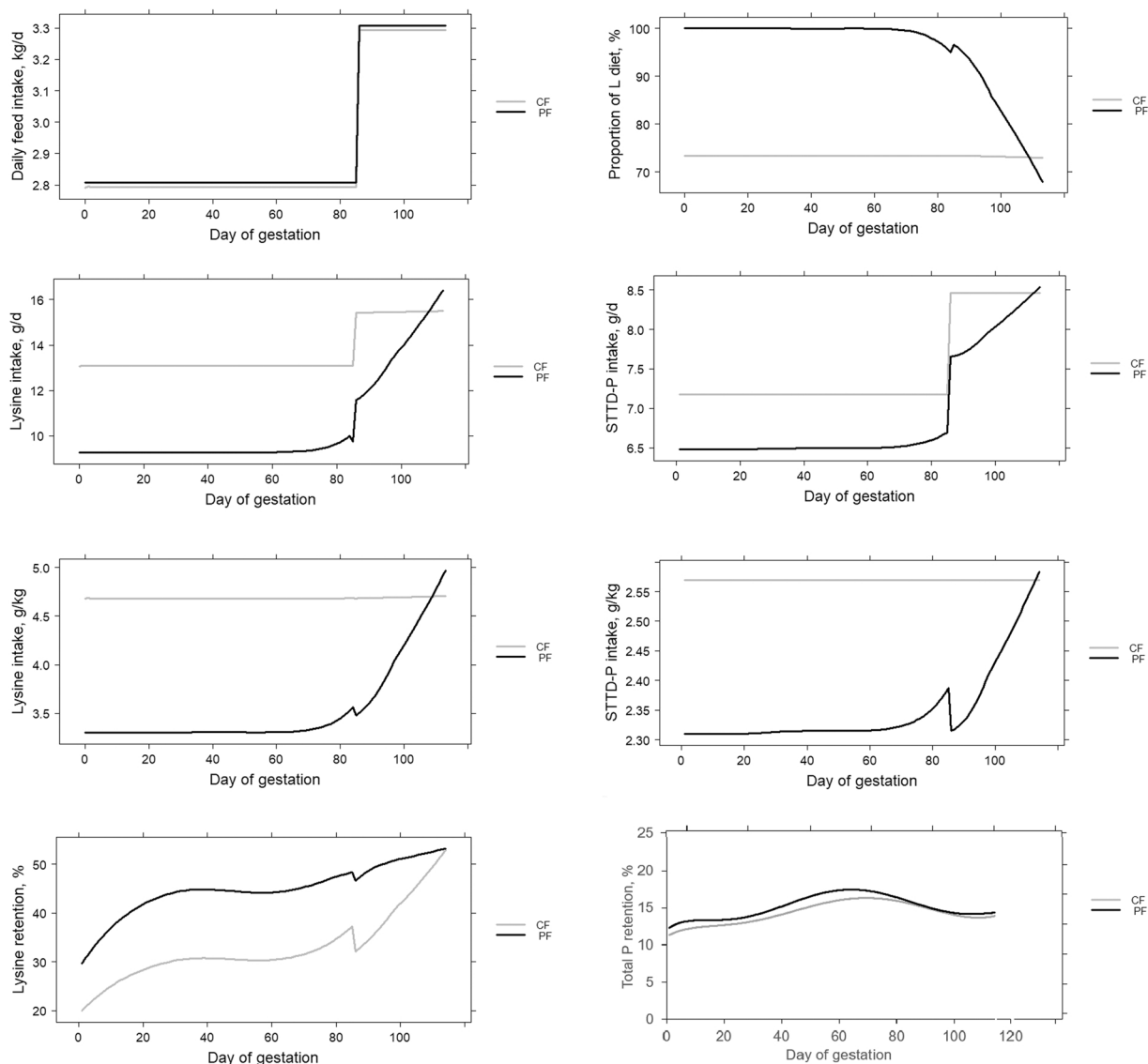


Fig. 1. Daily feed intake (kg/d), proportion (%) of the diet with a low lysine content (L diet) in the ration, lysine intake (g/kg and g/d), STTD-P intake (g/kg and g/d), lysine and phosphorus retentions over the gestation weeks for each feeding strategy (conventional feeding, CF vs. precision feeding, PF).

Table 3

Calculated digestible and total phosphorus (P) intakes and excretions regarding feeding strategy (Str: CF vs. PF), parity (Par: Primiparous vs. Multiparous sows) and days of gestation (Day).

| Means | All sows | | Primi | | Multi | | SE | P-value | | | | | |
|---------------------------------------|-----------------|------|-------|------|-------|------|------|---------|---------|---------|-----------|-----------|-----------|
| | CF ¹ | PF | CF | PF | CF | PF | | Str | Par | Day | Str × Par | Str × Day | Par × Day |
| Number of sows | 66 | 65 | 17 | 17 | 49 | 48 | | | | | | | |
| <i>STTD-P⁷ intake, g/d</i> | | | | | | | | | | | | | |
| Total over gestation | 7.50 | 6.90 | 6.72 | 6.31 | 7.77 | 7.12 | 0.06 | < 0.001 | < 0.001 | < 0.001 | 0.164 | < 0.001 | 0.635 |
| < 86 d | 7.12 | 6.51 | 6.39 | 5.92 | 7.44 | 6.72 | 0.06 | < 0.001 | < 0.001 | < 0.001 | 0.160 | < 0.001 | < 0.001 |
| ≥ 86 d | 8.46 | 8.04 | 7.68 | 7.46 | 8.73 | 8.25 | 0.06 | < 0.001 | < 0.001 | < 0.001 | 0.179 | < 0.001 | < 0.001 |
| <i>STTD-P intake, g/kg</i> | | | | | | | | | | | | | |
| Total over gestation | 2.57 | 2.35 | 2.57 | 2.36 | 2.57 | 2.34 | 0.01 | < 0.001 | < 0.001 | < 0.001 | < 0.001 | < 0.001 | < 0.001 |
| < 86 d | 2.57 | 2.32 | 2.57 | 2.33 | 2.57 | 2.31 | 0.01 | < 0.001 | < 0.001 | < 0.001 | < 0.001 | < 0.001 | < 0.001 |
| ≥ 86 d | 2.57 | 2.43 | 2.57 | 2.45 | 2.57 | 2.43 | 0.01 | < 0.001 | < 0.001 | < 0.001 | < 0.001 | < 0.001 | < 0.001 |
| <i>Total P intake, g/d</i> | | | | | | | | | | | | | |
| Total over gestation | 13.9 | 13.1 | 12.4 | 12.0 | 14.4 | 13.6 | 0.12 | < 0.001 | < 0.001 | < 0.001 | 0.254 | < 0.001 | 0.904 |
| < 86 d | 13.3 | 12.4 | 11.8 | 11.3 | 13.8 | 12.9 | 0.12 | < 0.001 | < 0.001 | < 0.001 | 0.250 | < 0.001 | < 0.001 |
| ≥ 86 d | 15.6 | 15.1 | 14.2 | 14.0 | 16.1 | 15.6 | 0.12 | < 0.001 | < 0.001 | < 0.001 | 0.269 | < 0.001 | < 0.001 |
| <i>Total P intake, g/kg</i> | | | | | | | | | | | | | |
| Total over gestation | 4.75 | 4.48 | 4.75 | 4.50 | 4.75 | 4.47 | 0.01 | < 0.001 | < 0.001 | < 0.001 | < 0.001 | < 0.001 | < 0.001 |
| < 86 d | 4.75 | 4.44 | 4.75 | 4.46 | 4.75 | 4.44 | 0.01 | < 0.001 | < 0.001 | < 0.001 | < 0.001 | < 0.001 | < 0.001 |
| ≥ 86 d | 4.75 | 4.58 | 4.75 | 4.61 | 4.75 | 4.57 | 0.01 | < 0.001 | < 0.001 | < 0.001 | < 0.001 | < 0.001 | < 0.001 |
| <i>Total P retention, %</i> | | | | | | | | | | | | | |
| Total over gestation | 14.3 | 15.1 | 14.9 | 15.0 | 14.1 | 15.1 | 0.31 | < 0.001 | 0.017 | < 0.001 | 0.290 | 0.078 | < 0.001 |
| < 86 d | 14.4 | 15.3 | 14.8 | 14.8 | 14.2 | 15.5 | 0.37 | 0.014 | 0.007 | < 0.001 | 0.270 | 0.202 | < 0.001 |
| ≥ 86 d | 14.0 | 14.5 | 15.3 | 15.6 | 13.6 | 14.1 | 0.31 | 0.800 | 0.360 | 0.367 | 0.750 | 0.940 | 0.698 |
| P excretion, kg/gestation | 1.40 | 1.27 | 1.21 | 1.16 | 1.47 | 1.31 | 0.02 | < 0.001 | < 0.001 | – | 0.184 | – | – |

¹Abbreviations: CF, conventional feeding strategy; PF, precision feeding strategy; Primi, primiparous sows; Multi, multiparous sows; STTD-P, standardized total tract digestible phosphorus; SE, standard error.

Table 4

Effects of the feeding strategy (Str: CF vs. PF), parity (Par: primiparous vs. Multiparous sows), and gestation period (Period: early vs. late) on feeding behavior (daily number of visits to the feeder, daily time spent at the feeder).

| | Early Period | | | | Late Period | | | | SE | P-value | | | | | |
|--|-------------------|-------------------|-------|-------|-------------------|-------------------|-------|-------|------|---------|-------|---------------------|-----------|--------------|--------------|
| | CF ¹ | PF | Primi | Multi | CF | PF | Primi | Multi | | Str | Par | Period ² | Str × Par | Str × Period | Par × Period |
| Number of sows | 66 | 65 | 34 | 97 | 66 | 65 | 34 | 97 | | | | | | | |
| <i>Number of daily visits to the feeder</i> | | | | | | | | | | | | | | | |
| Total ³ | 5.01 ^a | 5.00 ^a | 4.58 | 5.16 | 4.12 ^b | 4.66 ^a | 3.93 | 4.54 | 0.39 | 0.801 | 0.270 | < 0.001 | 0.603 | < 0.001 | 0.930 |
| Feed ⁴ | 1.08 | 1.08 | 1.01 | 1.11 | 1.08 | 1.08 | 1.01 | 1.10 | 0.02 | 0.820 | 0.010 | 0.691 | 0.752 | 0.951 | 0.863 |
| No-feed ⁵ | 4.42 ^b | 4.26 ^a | 3.80 | 4.54 | 3.69 ^c | 4.24 ^a | 3.58 | 4.09 | 0.37 | 0.556 | 0.176 | < 0.001 | 0.470 | < 0.001 | 0.222 |
| <i>Daily time spent in the feeder, min/d</i> | | | | | | | | | | | | | | | |
| Total | 62.1 ^a | 65.8 ^a | 51.7 | 68.2 | 57.5 ^a | 69.2 ^b | 58.4 | 65.0 | 6.63 | 0.788 | 0.141 | < 0.001 | 0.772 | < 0.001 | < 0.001 |
| Feed | 35.2 | 37.1 | 32.8 | 37.3 | 35.6 | 38.7 | 36.0 | 37.5 | 2.46 | 0.712 | 0.249 | 0.273 | 0.772 | 0.070 | < 0.001 |
| No-feed | 29.7 ^a | 31.4 ^a | 20.2 | 34.3 | 27.1 ^a | 36.8 ^b | 27.9 | 33.3 | 5.20 | 0.810 | 0.155 | < 0.001 | 0.777 | < 0.001 | < 0.001 |

Different superscripts are used to compare the 4 means of the double interaction Str × Period when they are significantly different with a P-value < 0.05.

¹Abbreviations: CF, conventional feeding strategy; PF, precision feeding strategy; Primi, primiparous sows; Multi, multiparous; SE, standard error

²Period, early period (≤ 85 d) vs. late period (> 85 d)

³Total, Total over the day

⁴Feed, daily feeding visits to the feeder

⁵No-feed, daily non-feeding visits to the feeder.

2.5. Statistical analysis

A first linear mixed-effects model was applied to determine the influence of feeding strategy (PF vs. CF), and parity (primiparous vs. multiparous) on sows' body characteristics (BW and BT), and reproductive parameters (litter size and weight). A second linear mixed-effects model, based on the first model but integrating the day of gestation as fixed effect, was used to evaluate the effects of the feeding strategy, parity, and the day of gestation on the intakes (feed, lysine, and phosphorus) and retentions for the entire gestation, and also on two restricted data set: over the beginning (≤ 85 d, early period), and the end (> 85 d, late period) of gestation as at 86 d all the sows received 500 g extra feed daily. This second model also took into account the correlations over days within each sow with the temporal corAR1 function, representing an autocorrelation structure of order 1 (Pinheiro and Bates, 2000). A third linear mixed-effects model was used to evaluate the effect of the feeding strategy, parity, and period on the feeding behaviors (number of visits to the feeder and daily time spent at the feeder). Finally, a last linear mixed-effects model was used to evaluate the effect of the feeding strategy, parity, and the hour of the day (from 0 to 24) on the hourly feeding behaviors. For all these models, the double interactions between each fixed effect were considered unless for the reproductive parameters for which the model was simplified as the interactions were never significant. These models were applied on R (version 3.4.2) using the LME function from the NLME package (Pinheiro et al., 2018). All these models took into account the random effect of the sow. The sow was the experimental unit. The results are presented below as

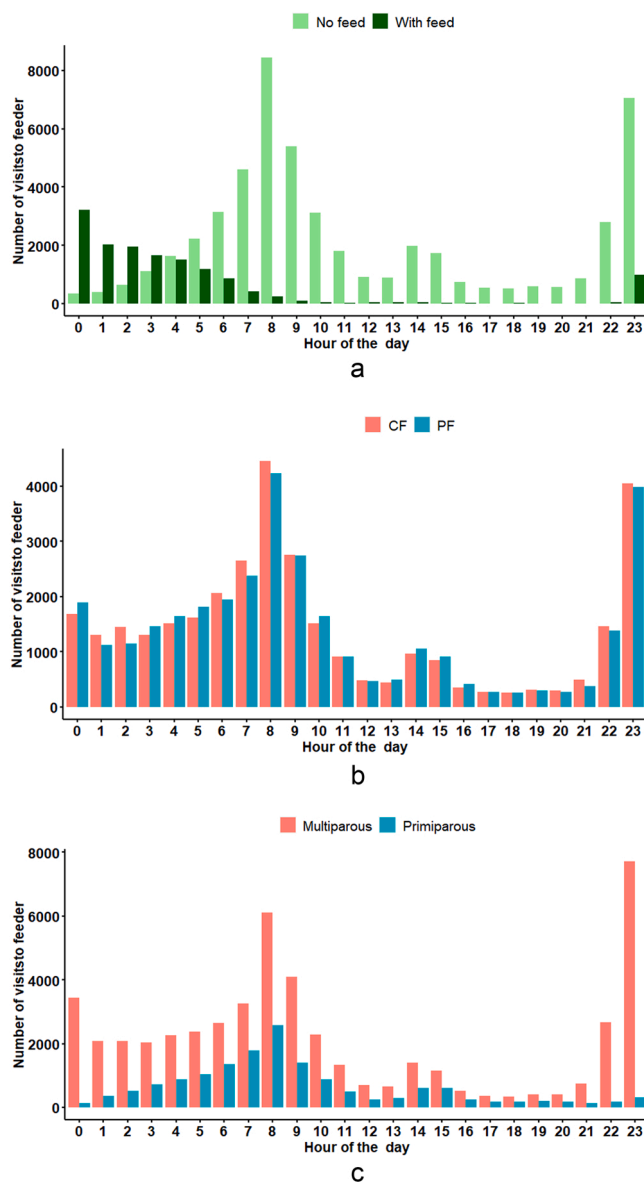


Fig. 2. Average distribution of a) the type of visits (with or without feed) to the feeder over a day, b) the number of visits regarding the feeding strategy (CF: Conventional Feeding vs. PF: Precision Feeding), and c) regarding parity (primiparous or multiparous).

means and standard errors for fixed effects, including P-values to indicate if the factors, and eventual interactions, were significant ($P < 0.05$) or tended to be ($0.05 \leq P < 0.10$).

To compare the measured values to the target values of sows' BW at farrowing, BT at farrowing, and reproductive performance, a Student test or a Welch test were used depending if the variances were equal or not, respectively.

3. Results

3.1. Ingestions, costs and excretions

As planned, the daily feed intake was not influenced by the feeding strategy (Table 2). On average, primiparous sows ate 2.64 kg/d while multiparous sows ate 3.02 kg/d.

As planned, the proportion of the L diet in the ration was fixed for the CF sows while variable for the PF sows ($P < 0.001$). The proportion of L diet decreased for the PF sows during the last third of the gestation in response to their increase of lysine requirements (Fig. 1; $P < 0.001$).

Over a 114 days gestation, there was a reduction of 398 g of SID lysine ingested by the PF sows, compared to the CF sows ($P < 0.001$), corresponding to around 25% reduction. Therefore, feed costs were reduced for the PF sows compared to the CF sows (by 3.4 € per gestation or 8 € per ton of feed). Nitrogen excretion was reduced of 18.5% with the PF sows compared to the CF sows (Table 2; $P < 0.001$). Phosphorus intake and excretion were also reduced with PF compared to CF of around 8% and 9%; respectively (Table 3; $P < 0.001$).

3.2. Feeding behavior

3.2.1. Number of visits to the feeder

On average, 21% of the sows' visits to the feeder were feeding visits while the 79% left were non-feeding visits (Table 4). There was no significant effect of the feeding strategy or the gestation period on the number of feeding visits. All the sows ate their full daily ration, usually in one visit to the feeder. Concerning the non-feeding visits to the feeder, a significant interaction was found between the feeding strategy and the gestation period ($P < 0.001$). While the number of non-feeding visits for the PF sows stayed constant over the gestation (4.25 non-feeding visits/d on average), the CF sows did more non-feeding visits at the beginning of the gestation than at the end (4.43 vs. 3.70 non-feeding visits/d, respectively).

3.2.2. Daily time spent in the feeder

On average the sows spent 54% of their time at the feeder for feeding visits, and 46% for non-feeding visits (Table 4). There was a tendency for the feeding strategy to affect the daily time spent at the feeder for feeding visits regarding the gestation period ($P = 0.070$). Indeed, PF sows slightly increased their time spent for feeding visits during the gestation, while it stayed relatively constant for the CF sows (35.3 min/d on average). Similarly, the daily time spent for the non-feeding visits stayed stable over the gestation for the CF sows (29.2 min/d), but increased for the PF sows (strategy by period interaction $P < 0.001$). Daily time spent at the

Table 5

Sows' body weight (BW) and backfat thickness (BT) over gestation regarding their parity (Par: Primiparous vs. Multiparous sows) and feeding strategy (Str: CF vs. PF).

| Feeding strategy | All sows | | Primi | | Multi | | SE | P-value | | |
|-------------------------------------|-----------------|-------|-------|-------|-------|-------|------|---------|---------|-----------|
| | CF ¹ | PF | CF | PF | CF | PF | | Str | Par | Str × Par |
| Number of sows | 66 | 65 | 17 | 17 | 49 | 48 | | | | |
| <i>Body Weight (BW), kg</i> | | | | | | | | | | |
| At insemination | 208 | 204 | 164 | 167 | 223 | 218 | 4.05 | 0.365 | < 0.001 | 0.473 |
| Mid-gestation (63 d) | 252 | 247 | 208 | 208 | 267 | 261 | 4.13 | 0.223 | < 0.001 | 0.550 |
| Before farrowing (110 d) | 283 | 277 | 239 | 236 | 298 | 291 | 3.62 | 0.121 | < 0.001 | 0.671 |
| After farrowing (118 d) | 262 | 257 | 219 | 215 | 277 | 271 | 3.85 | 0.215 | < 0.001 | 0.821 |
| BW gain over gestation ² | 75.1 | 72.5 | 75.0 | 68.9 | 75.2 | 73.8 | 2.18 | 0.585 | 0.959 | 0.361 |
| Net gestation BW gain ³ | 54.3 | 52.3 | 55.3 | 48.7 | 54.0 | 53.6 | 2.04 | 0.876 | 0.695 | 0.191 |
| BW loss from 110 to 118 d | -20.8 | -20.2 | -19.7 | -20.2 | -21.2 | -20.2 | 1.20 | 0.550 | 0.533 | 0.645 |
| <i>Backfat Thickness (BT), mm</i> | | | | | | | | | | |
| At insemination | 14.9 | 15.0 | 16.1 | 15.3 | 14.5 | 14.9 | 0.46 | 0.475 | 0.038 | 0.255 |
| Mid-gestation (63 d) | 18.3 | 18.6 | 18.9 | 19.2 | 18.1 | 18.4 | 0.48 | 0.558 | 0.299 | 0.987 |
| Before farrowing (110 d) | 20.2 | 20.9 | 20.8 | 21.3 | 20.1 | 20.8 | 0.49 | 0.284 | 0.469 | 0.884 |
| After farrowing (118 d) | 19.9 | 20.3 | 20.5 | 20.4 | 19.7 | 20.3 | 0.60 | 0.386 | 0.420 | 0.628 |
| BT gain over gestation ² | 5.27 | 5.84 | 4.47 | 5.71 | 5.51 | 5.87 | 0.50 | 0.502 | 0.187 | 0.436 |
| Net gestation BT gain ³ | 4.89 | 5.27 | 4.13 | 5.00 | 5.12 | 5.35 | 0.49 | 0.669 | 0.211 | 0.569 |
| BT loss from 110 to 118 d | -0.36 | -0.55 | -0.29 | -0.62 | -0.39 | -0.52 | 0.12 | 0.348 | 0.633 | 0.482 |

¹Abbreviations: CF, Conventional Feeding; PF, Precision Feeding; Primi, primiparous sows; Multi, multiparous sows; SE, standard error

²From insemination to 110 days of gestation

³From insemination to after farrowing (118 days of gestation).

feeder was also affected by the parity over gestation (interaction $P < 0.001$): in the beginning of the gestation, the multiparous sows spent 16.5 min more per day in the feeder than the primiparous sows mainly due to non-feeding visits.

3.2.3. Daily timetable

The sows did their feeding visits at the beginning of a new day (from 00 h to 09 h) which corresponds to the availability of their new daily ration as the feeding day started at 00 h, while between 05 h and 11 h they did many non-feeding visits (Fig. 2a).

Some hours of the day the CF sows tended ($P = 0.061$) to visit more the feeder than the PF sows (i.e. from 01 h to 03 h, and from 06 h to 08 h), while some hours it was the opposite (i.e. from 10 h to 15 h, Fig. 2b). However, on average during the first 12 h of the new feeding day, the PF sows spent more time in the feeder than the CF sows ($P < 0.001$).

During the first 12 h of the new feeding day, the primiparous sows visited less the feeder than the multiparous sows ($P < 0.001$). Moreover, the primiparous sows spent less time in the feeder from 19 h to 00 h, and more time from 11 h and 14 h, than the multiparous sows ($P < 0.001$, Fig. 2c).

3.3. Body weight and backfat thickness

As reported in Table 5, there was no significant effect of the feeding strategy on the BW and BT at insemination, before and after farrowing. The primiparous sows had a lower BW than the multiparous sows ($P < 0.001$) during all the gestation, and a higher BT but only at insemination ($P = 0.038$). The BW increased during gestation and the average BW before farrowing did not differ from the target BW at this stage. The BW after farrowing was heavier than the target used for the determination of feed requirements (260 vs. 250 kg respectively; Welch t-test $P = 0.010$). The BT increased over gestation and reached on average 20.1 mm at farrowing, which is higher than the objective of 19 mm used for the determination of feed requirements (Welch t-test $P < 0.001$).

On average, the sows gained 73.8 ± 3.63 kg over the gestation (from insemination to before farrowing), with an average BT gain of 5.55 ± 0.55 mm independently of the parity or feeding strategy. The net gestation maternal BW gain and the net maternal BT gain, from insemination to after farrowing, were also not affected by the feeding strategy or parity (Table 4).

3.4. Reproductive performance

On average at birth a litter weighted 23.1 ± 0.84 kg and was composed of 16.3 ± 0.52 piglets including alive and dead (Table 6). Litter weight at birth and total number of piglets were not affected by the feeding strategy. The multiparous sows had heavier litters at birth (23.7 vs. 21.0 kg, $P = 0.028$) and more piglets (16.7 vs. 14.9 piglets per litter, $P = 0.025$) than the primiparous sows. On average, the number of piglets born alive was 15.1 ± 0.66 and the number of stillborn 1.19 ± 0.27 per litter, without any effect of feeding strategy. The multiparous sows gave birth to more alive piglets than the primiparous sows (15.5 vs. 13.8, $P = 0.030$). The average number of weaned piglets was 11.1 ± 0.48 , without any significant effect of the parity or feeding strategy. On average, from birth to weaning, litter gained 71.8 ± 2.79 kg, without significant effect of the feeding strategy. Litter weight gain was lower for the primiparous sows than the multiparous sows (64.7 vs. 74.3 kg, $P = 0.015$).

There was no significant difference between the litter weight at birth estimated for the calculation of the nutrient requirements and the measured weight (22.8 vs. 23.1 kg), neither between the estimated and the measured number of alive piglets (15.0 vs. 15.1 alive piglets per litter).

4. Discussion

4.1. Precision feeding, effect on performance

The increase of intake after 86 d compared to the previous period of gestation was due to the 500 g added to the ration for all the

Table 6

Reproductive results of the 131 gestating sows, regarding their parity (Par: Primiparous vs. Multiparous sows) and feeding strategy (Str: CF vs. PF).

| Feeding strategy | All sows | | Primi | | Multi | | SE | P-value | | |
|--|-----------------|------|-------|------|-------|------|------|---------|-------|-----------|
| | CF ¹ | PF | CF | PF | CF | PF | | Str | Par | Str × Par |
| Number of litters | 66 | 65 | 17 | 17 | 49 | 48 | | | | |
| <i>At birth</i> | | | | | | | | | | |
| Litter weight, kg | 23.5 | 22.6 | 21.3 | 20.6 | 24.3 | 23.4 | 0.67 | 0.280 | 0.028 | 0.833 |
| Total number of piglets | 16.4 | 16.2 | 15.4 | 14.4 | 16.7 | 16.8 | 0.70 | 0.916 | 0.025 | 0.508 |
| Number of alive piglets | 15.1 | 15.1 | 14.4 | 13.3 | 15.3 | 15.7 | 0.65 | 0.672 | 0.030 | 0.342 |
| Number of dead piglets | 1.27 | 1.12 | 1.00 | 1.12 | 1.37 | 1.12 | 0.28 | 0.465 | 0.432 | 0.583 |
| <i>At weaning</i> | | | | | | | | | | |
| Litter weight, kg | 94.8 | 95.0 | 84.2 | 87.2 | 98.4 | 97.7 | 2.91 | 0.832 | 0.003 | 0.580 |
| Number of piglets | 11.3 | 10.9 | 11.5 | 11.0 | 11.2 | 10.8 | 0.47 | 0.489 | 0.733 | 0.940 |
| Litter weight gain from birth to weaning, kg | 71.3 | 72.4 | 62.9 | 66.6 | 74.1 | 74.5 | 3.21 | 0.922 | 0.015 | 0.603 |

¹Abbreviations: CF, Conventional Feeding; PF, Precision Feeding; Primi, primiparous sows; Multi, multiparous sows; SE, standard error

sows. Performances (BW, BT, litter size, and weight) were not affected by the feeding strategies. This is in accordance with the results of Cloutier et al. (2019) who ran a similar experiment but with a higher number of sows (523 gestations followed) and reported no effect of the PF strategy on BW and BT. However, they found that, for the primiparous sows, the gestational muscle gain was higher for the PF sows compared to the CF sows (+2.03 vs. -0.51 mm respectively), and that there was a tendency for the piglet survival rate to be higher for PF than CF. These results for the primiparous sows could be explained because the PF strategy covers better the requirements of the primiparous sows at the end of the gestation according to the simulations of Gaillard et al. (2020). Our results are in accordance with those of Buis (2016) who used the NRC model (2012) to evaluate the effects of PF on primiparous BW and BT changes during gestation and found no effect of the feeding strategy on these two variables. However, in his study the sows fed with PF tended to gain less BW during early gestation (from 4 to 33 gestation days) than the sows fed with CF (10.0 vs. 12.4 kg) but gained more BW during late gestation (from 68 to 102 days; 29.2 vs. 23.9 kg). Moreover, patterns of BW gain for the PF sows reflected more closely the gain of fetuses and reproductive tissues which could affect long term performance. Finally, in the study of Hansen (2011), the litters produced by the sows fed with PF had a higher growth performance in the final nursery stage than those produced by sows fed with CF. These results indicate that PF might not have a direct effect on sows' BW and BT but also a potential long-term positive effect on piglets' performance. In the study of Stewart (2020) reporting the effect of PF on 105 gestating sows followed over 3 consecutive cycles, sow's longevity was not impacted by the feeding strategy.

In the present study, total lysine intake over gestation was lowered by 25% with the PF strategy compared to the CF strategy, which is in accordance with previous simulations reporting a 27–32% reduction with PF compared to CF, depending on the farms (Gaillard et al., 2020). Feed costs were reduced by 3.7% with PF compared to CF, also in agreement with previous simulations on gestating sows (-3.6%; Gaillard et al., 2020) and a similar study performed in growing pigs (-4.0%; Pomar et al., 2009). Stewart (2020) also reported the potential financial advantage of PF over CF especially when protein become an expensive ingredient. Similarly phosphorus intake and excretion decreased with PF compared to CF as predicted in Gaillard et al. (2020). However, these differences were smaller in the present experiment than in the simulations (-8 vs. -14% for standardized total tract digestible phosphorus intake, and -9 vs. -15% for phosphorus excretion), probably due to differences in feed phosphorus content and sows' characteristics. The present experiment focused on one gestation cycle per sow only. It would be interesting to go further and follow the effects of PF on the sows' performances and feed costs over several consecutive cycles, in combination with the use of PF also during lactations. Indeed, a recent study showed that PF during lactation also reduced feed costs and lysine ingestion (Gauthier, 2021).

4.2. Model predictions and technical issues

On average the estimated BW before farrowing was precise as no significant difference was found between the estimated and measured values. Conversely, average values of BW and BT measured after farrowing were slightly but significantly greater than the values used for the factorial calculation of requirements (Dourmad et al., 2008). The estimated litter weight was not different from the observed one so this does not explain the underestimation of the sow BW after farrowing, which might be linked to an underestimation of the placenta and fluids weight as well as mammary tissues weight (Close et al., 1984). The greater maternal gain than expected could also indicate that the efficiency of nutrient utilization, or the nutritional value of the diets, especially for energy, might be greater than the values used for the factorial calculation of requirements. Differences in sows' behavior that affect maintenance requirement could also be involved. This suggests that further development of the decision support system (e.g. real-time measurement of sows' BW and behavior) could improve the determination of nutrient requirement, and the real-time adjustment of supplies.

Young et al. (2004) compared different ways of attributing and calculating feeding allowance, based on a visual estimation (body condition score, BCS, grade from 1 – thin sow, to 5 – fat sow) or based on BT and BW measurements at weaning or service (for gilts). These BW and BT measurements were then used as inputs for equations calculating the energy requirements for maintenance, maternal gain, and uterus, similarly to our study. They reported that feeding gestating sows using their BW and BT resulted in lower proportion of fat sows at farrowing, and similar proportion of thin sows compared to the visual BCS strategy. Feed intake of sows fed with the BCS strategy was higher than the one of sows fed with the BW-BT strategy (+27 kg of feed throughout gestation). Thus, for a sow producing 2.3 litters per year, and for a gestation feed cost of 0.13 \$/kg, the BT-BW strategy allows the saving of 8 \$/sow yearly compared to the BCS strategy. Moreover, feeding strategy did not affect performance during lactation. Therefore, using BT and BW at service to calculate feeding allowance is an inexpensive and relevant feeding method for gestating sows. It also makes sense as BT has been shown to be positively correlated with lifetime productivity (Gaughan et al., 1995).

4.3. Feeding behaviors

4.3.1. General sows feeding behaviors

On average, the sows visited the feeders 5 times per day and spent 64 min per day in the feeders. They ate all their ration in one visit and a feeding visit lasted around 36 min, corresponding to an average feeding rate of 80 g/min. Marcon et al. (2020) reported a similar average of 6 visits per day with 48–72 sows for 2 feeders but shorter total time (27 min) and feeding time (13 min) in the feeders, that could be related to the greater number of sows per feeder in their study or to the fact that the feeders' doors were closed once all the sows had eaten their ration. Wavreille et al. (2009) reported a daily meal duration of 23 min per day, stating that it fits well with the feeding rate of 118 g/min measured by Cerneau et al. (1997). As shown by Ramonet et al. (1999) feeding rate varied with the fiber content of the diet, from 152 to 67 g/min when CF content varied from 3.3% to 18.1% of the diet. But this does not explain the rather low feeding rate found in the present study because dietary CF was rather low (about 4.5% on average). These results suggest that in the present study the sows spent more time in the feeder than required to eat their ration, taking the space of others that did not eat yet.

A solution would be to motivate the sows to move out of the feeder as soon as they have eaten, for example adding water in the feed (e. g., 50 mL per 100 g) or going for a one-pass pen design that reduces feeding time (Stewart et al., 2008). Reducing waiting time in front of the feeder will decrease the competition for feed and injuries; and might also avoid energy requirements to be affected by this extra physical activity.

4.3.2. Parity, feeding and time effects

There was no significant parity effect on the number of visits or time spent in the feeders even if, numerically, the primiparous sows spent around 16 min more per day in the feeder than the multiparous sows. This value is in agreement with Wavreille et al. (2009) reporting that the primiparous sows spent 10 min more per day in the feeder than the multiparous sows, although this result was also linked to a higher number of visits. In the present study, the sows spent more time at the feeder in the beginning of the new feeding day than later during the day even though it was during night time (midnight). Wavreille et al. (2009) also reported that the feeder was mainly occupied during the first 12 h of the feeding day, and that it was first occupied by the multiparous sows, in accordance with our results. As the sows were fed restrictively during gestation, these results make sense: the sows were waiting for the new feeding day to start at any time (day or night) and parity was clearly related to the hierarchical order of entrance in the feeder (Wavreille et al., 2009).

At the end of the gestation, the frequency of non-feeding visits and time spent in the feeder were higher for the PF sows compared to the CF sows. Buis (2016) did not find any effects of the feeding strategy on the number of visits to the feeder. These results are difficult to interpret but might indicate that the PF strategy may stimulates hunger somehow so the sows were visiting the feeder expecting more feed. It would be interesting to study these feeding behaviors during consecutive cycles to see if they keep stable or if the PF sows are behaving similarly to the CF sows after a while. Furthermore, the effect of the feeding strategy on feeding behaviors requires further investigation as feeding behaviors could be linked to the level of activity of the sows, and therefore to the energy requirements. They could also serve as management indicators to detect health troubles, as for example a reduction of the non-feeding visits to the feeder pointed out sick calves in the study of Weary et al. (2009). The use of these data should be investigated for gestating sows, for example to evaluate their ability to detect leg injuries but also their response to heat stress. Indeed, previous study showed that low-intensity heat stress altered duration and frequency of feeding (Anderson et al., 2020). The link should also be explored between feeding behavior and physical activity as it seems logical that these two variables would be positively correlated.

5. Conclusion

Compared to the CF strategy, the PF strategy reduced lysine intake, nitrogen excretion, phosphorus excretion, and feed costs per gestation of around 25%, 18.5%, 9%, and 3.7%, respectively. Reproductive performance and sow's body characteristics were not affected by the feeding strategy. The number of feeding visits to the feeder and the time spent for these visits were barely affected by feeding strategy. Only at the end of the gestation the frequency of non-feeding visits and the time spent in the feeder were higher for the PF sows compared to the CF sows. In conclusion, the PF strategy reduced lysine intake, protein intake and feed costs without influencing reproductive performance while reducing nitrogen and phosphorus excretion.

Funding

This work was supported by Feed-a-Gene, a project that received funding from the European Union's Horizon 2020 research and innovation program under grant agreement no. 633531. This project also received a grant by the department PHASE, INRAE.

CRedit authorship contribution statement

Charlotte Gaillard: Conceptualization, Methodology, Investigation, Data curation, Writing – original draft, Writing – review & editing. **Jean-Yves Dourmad:** Conceptualization, Methodology, Writing – review & editing.

Declaration of Competing Interest

The authors declare that they have no known competing financial interests or personal relationships that could have appeared to influence the work reported in this paper.

Acknowledgments

The authors wish to thank the team at the Porcine Experimental Unit (UE3P, St-Gilles, France) for their highly committed efforts to run the experiment as well as the students' team involved in the experimental measurements and data collection (Aline Julienne, Laura Derouet). They acknowledge the INRAE Saint-Gilles technicians for their efficiency on the laboratory feed analyses.

Conflict of interest statement

The authors declare no real or perceived conflicts of interest.

References

- Anderson, L.E., Holt, J.P., van Heugten, E., Poole, D.H., 2020. Changes in growth performance, feeding behaviors, and posture behaviors of growing pigs subjected to low-intensity heat stress (Meeting Abstract). *J. Anim. Sci.* 98. <https://doi.org/10.1093/jas/skaa278.006>.
- Andretta, I., Pomar, C., Rivest, J., Pomar, J., Radunz, J., 2016. Precision feeding can significantly reduce lysine intake and nitrogen excretion without compromising the performance of growing pigs. *Animal* 10, 1137–1147. <https://doi.org/10.1017/s17517311155003067>.
- Bikker, P., Blok, M.C., 2017. Phosphorus and calcium requirements of growing pigs and sows, ed. Wageningen Livestock Research, Wageningen, The Netherlands. (<https://edepot.wur.nl/424780>).
- AOAC, 1990. *Official Methods of Analysis* (15th Ed.). Association of Official Analytical Chemists, Arlington, VA, USA.
- Boumans, I.J.M.M., de Boer, I.J.M., Hofstede, G.J., Bokkers, E.A.M., 2018. How social factors and behavioural strategies affect feeding and social interaction patterns in pigs. *Physiol. Behav.* 194, 23–40. <https://doi.org/10.1016/j.physbeh.2018.04.032>.
- Buis, R.Q., 2016. Development and application of a precision feeding program using electronic sow feeders and effect on gestating primiparous sow performance. The University of Guelph, Ontario, Canada. Msc thesis, 101 pages. (https://atrium.lib.uoguelph.ca/xmlui/bitstream/handle/10214/9866/Buis_Robert_201608_Msc.pdf?isAllowed=y&sequence=3).
- Cerneau, P., Meunier-Salaün, M.C., Lauden, P., Godfrin, K., 1997. Incidence du mode de logement et du mode d'alimentation sur le comportement de truies gestantes et leurs performances de reproduction. *J. Rech. Porc. Fr.* 29, 175–182.
- Close, W.H., Noblet, J., Heavens, R.P., 1984. The partition of body-weight gain in the pregnant sow. *Livest. Prod. Sci.* 11, 517–527. [https://doi.org/10.1016/0301-6226\(84\)90036-8](https://doi.org/10.1016/0301-6226(84)90036-8).
- Cloutier, L., Dourmad, J.Y., Pomar, C., Morin-Doré, L., Gagnon, P., 2019. Effet d'une alimentation de précision sur les performances, la productivité et le coût d'alimentation des truies en gestation dans un contexte commercial de gestion des truies en groupe. *J. Rech. Porc. Fr.* 51, 129–134. (<https://hal.archives-ouvertes.fr/hal-02097191/document>).
- Dourmad, J.Y., Etienne, M., Valancogne, A., Dubois, S., van Milgen, J., Noblet, J., 2008. InraPorc: a model and decision support tool for the nutrition of sows. *Anim. Feed Sci. Technol.* 143, 372–386. <https://doi.org/10.1016/j.anifeedsci.2007.05.019>.
- Dourmad, J.Y., Van Milgen, J., Valancogne, A., Dubois, S., Brossard, L., Noblet, J., 2015. Modelling nutrient utilization in sows: a way towards the optimization of nutritional supplies (dir.). In: Sakomura, N.K., Gous, R.M., Kyriazakis, I., Hauschild, L. (Eds.), *Nutritional Modelling for Pigs and Poultry*. CABI Publishing, Wallingford, UK, pp. 50–61 (dir.).
- Gaillard, C., Gauthier, R., Cloutier, L., Dourmad, J.Y., 2019. Exploration of individual variability to better predict the nutrient requirements of gestating sows. *J. Anim. Sci.* 97, 4934–4945.
- Gaillard, C., Quiniou, N., Gauthier, R., Cloutier, L., Dourmad, J.Y., 2020. Evaluation of a decision support system for precision feeding of gestating sows. *J. Anim. Sci.* 98, 1–12. <https://doi.org/10.1093/jas/skaa255>.
- Gaughan, J.B., Cameron, R.D.A., Dryden, G.McL., Josey, M.J., 1995. Effect of selection for leanness on overall reproductive performance in Large White sows. *Anim. Sci.* 61, 561–564.
- Gauthier, R., 2021. PhD Thesis - Système d'alimentation de précision des truies en lactation par modélisation et machine learning. INRAE-INRIA, France, p. 252.
- Hansen, L., 2011. Precision feeding gestating sows: effects on offspring growth, immune system robustness, and carcass and meat quality. University of Guelph, Ontario, Canada. Master thesis, 100 pages. (https://atrium.lib.uoguelph.ca/xmlui/bitstream/handle/10214/23752/Hansen_Lauren_202101_MSc.pdf?sequence=6).
- IFIP, 2019. BAROPORC de l'IPIF, mensual prices. (<https://www.baroporc.fr/>) (accessed 09 March 2022).
- Marcon, M., Quiniou, N., Courboulay, V., Rousselière, Y., Merlot, G., Meunier-Salaün, M.C., Ramonet, Y., 2020. Améliorer les performances et le bien être des truies gravides par la mobilisation de nouvelles technologies pour une alimentation de précision et la détection de signaux comportementaux. *Innov. Agron.* 79, 245–256.
- McPherson, R.L., Ji, F., Wu, G., Blanton, J., Kim, S.W., 2004. Growth and compositional changes of fetal tissues in pigs. *J. Anim. Sci.* 82, 2534–2540. <https://doi.org/10.2527/2004.8292534x>.
- Noblet, J., Shi, X.S., Dubois, S., 1993. Energy cost of standing activity in sows. *Livest. Prod. Sci.* 34, 127–136.
- Pinheiro, J., Bates, D., DebRoy, S., Sarkar, D., Team R.C., 2018. NLME: linear and nonlinear mixed effects models. R package (version 3.1–137). (<https://CRAN.R-project.org/package=nlme>).
- Pinheiro, J.C., Bates, D.M., 2000. *Mixed-effects models in S and S-PLUS*, ed. Springer, USA.
- Pomar, C., Hauschild, L., Zhang, G.H., Pomar, J., Lovatto, P.A., 2009. Applying precision feeding techniques in growing-finishing pig operations. *Rev. Bras. Zootec.* 38, 226–237. <https://doi.org/10.1590/S1516-35982009001300023>.
- Ramonet, Y., Meunier-Salaün, M.C., Dourmad, J.Y., 1999. High-fiber diets in pregnant sows: digestive utilization and effects on behavior of the animals. *J. Anim. Sci.* 77, 591–599.
- Stewart, C.L., O'Connell, N.E., Boyle, L., 2008. Influence of access to straw provided in racks on the welfare of sows in large dynamic groups. *Appl. Anim. Behav. Sci.* 112, 235–247.
- Stewart, V., 2020. Precision feeding of gestating sows across three parities using electronic sow feeders. MSc thesis, University of Guelph, Ontario, Canada, 98 pages.
- Van Soest, P.J., Wine, R.H., 1967. Use of detergent in the analysis of fibrous feed. IV—Determination of plant cell walls constituents. *J. AOAC Int.* 50, 50–55.
- Wavreille, J., Remience, W., Canart, B., Bartiaux-Thill, N., Vandenheede, M., Baudouin, N., 2009. Analyse des modalités d'utilisation d'un distributeur automatique de concentré (DAC) par des truies gestantes logées en groupe dynamique. *J. Rech. Porc. Fr.* 41, 1–3.
- Weary, D.M., Huzzey, J.M., von Keyserlingk, M.A., 2009. Board-invited review: using behavior to predict and identify ill health in animals. *J. Anim. Sci.* 87, 770–777. <https://doi.org/10.2527/jas.2008-1297>.
- Young, M.G., Tokach, M.D., Aherne, F.X., Main, R.G., Dritz, S.S., Goodband, R.D., Nelssen, J.L., 2004. Comparison of three methods of feeding sows in gestation and the subsequent effects on lactation performance. *J. Anim. Sci.* 82, 3058–3070.