



HAL
open science

Day versus night use of forest by red and roe deer as determined by Corine Land Cover and Copernicus Tree Cover Density: assessing use of geographic layers in movement ecology

M Salvatori, J de Groeve, E van Loon, B de Baets, Nicolas Morellet, S Focardi, Nadège Bonnot, B Gehr, M Griggio, M Heurich, et al.

► To cite this version:

M Salvatori, J de Groeve, E van Loon, B de Baets, Nicolas Morellet, et al.. Day versus night use of forest by red and roe deer as determined by Corine Land Cover and Copernicus Tree Cover Density: assessing use of geographic layers in movement ecology. *Landscape Ecology*, 2022, 37 (5), pp.1453-1468. 10.1007/s10980-022-01416-w . hal-03740232

HAL Id: hal-03740232

<https://hal.inrae.fr/hal-03740232>

Submitted on 29 Jul 2022

HAL is a multi-disciplinary open access archive for the deposit and dissemination of scientific research documents, whether they are published or not. The documents may come from teaching and research institutions in France or abroad, or from public or private research centers.

L'archive ouverte pluridisciplinaire **HAL**, est destinée au dépôt et à la diffusion de documents scientifiques de niveau recherche, publiés ou non, émanant des établissements d'enseignement et de recherche français ou étrangers, des laboratoires publics ou privés.



Distributed under a Creative Commons Attribution 4.0 International License



Day versus night use of forest by red and roe deer as determined by Corine Land Cover and Copernicus Tree Cover Density: assessing use of geographic layers in movement ecology

M. Salvatori · J. De Groeve · E. van Loon · B. De Baets · N. Morellet · S. Focardi · N. C. Bonnot · B. Gehr · M. Griggio · M. Heurich · M. Kroeschel · A. Licoppe · P. Moorcroft · L. Pedrotti · J. Signer · N. Van de Weghe · F. Cagnacci

Received: 20 May 2021 / Accepted: 27 January 2022 / Published online: 1 March 2022
© The Author(s) 2022

Abstract

Context Diel use of forest and open habitats by large herbivores is linked to species-specific needs of multiple and heterogeneous resources. However, forest cover layers might deviate considerably for a given landscape, potentially affecting evaluations of animals' habitat use.

Objectives We assessed inconsistency in the estimates of diel forest use by red and roe deer at GPS

location and home range (HR) levels, using two geographic layers: Tree Cover Density (TCD) and Corine Land Cover (CLC).

Methods We first measured the classification mismatch of red and roe deer GPS locations between TCD and CLC, also with respect to habitat units' size. Then, we used Generalised Least Squares models to assess the proportional use of forest at day and night at the GPS location and HR levels, both with TCD and CLC.

Results About 20% of the GPS locations were inconsistently classified as forest or open habitat by the two layers, particularly within smaller habitat units. Overall proportion of forest and open habitat, though, was very similar for both layers. In all populations, both deer species used forest more at day than at night and this pattern was more evident with TCD than with CLC. However, at the HR level, forest use

M. Salvatori and J. De Groeve have contributed equally to this work.

Our very much missed colleague Prof. M. Griggio who contributed to the idea and early development of this work prematurely passed away.

Supplementary Information The online version contains supplementary material available at <https://doi.org/10.1007/s10980-022-01416-w>.

M. Salvatori · J. De Groeve · F. Cagnacci
Research and Innovation Centre Fondazione Edmund Mach, 38010 San Michele All'Adige, Italy

M. Salvatori · M. Griggio
Department of Biology, University of Padova,
35121 Padova, Italy

M. Salvatori
Department of Biology, University of Firenze,
50019 Sesto Fiorentino, Italy

M. Salvatori
MUSE, Science Museum of Trento, 38122 Trento, Italy

J. De Groeve · N. Van de Weghe
Department of Geography, Ghent University, 9000 Ghent,
Belgium

J. De Groeve (✉) · E. van Loon
Institute for Biodiversity and Ecosystem Dynamics,
University of Amsterdam, 1090 GE Amsterdam,
The Netherlands
e-mail: j.degroeve@uva.nl

B. De Baets
Department of Data Analysis and Mathematical
Modelling, Faculty of Bioscience Engineering, KERMIT,
Ghent University, 9000 Ghent, Belgium

estimates were only marginally different between the two layers.

Conclusions When estimating animal habitat use, geographic layer choice requires careful evaluation with respect to ecological questions and target species. Habitat use analyses based on GPS locations are more sensitive to layer choice than those based on home ranges.

Keywords Habitat analysis · Habitat use · Home range · Ungulates · GPS-telemetry · Movement ecology · Geographic layers · Remote sensing

Introduction

Estimating animal habitat use has become an achievable task thanks to two technological advances of the early 2000s that have become standard practice: GPS technology and remote sensing (Cagnacci et al. 2010). Over the last 2 decades, geographic layers have been based more frequently on satellite data (Kuenzer et al. 2014; Pettorelli et al. 2014) and have facilitated standardized and large-scale ecological analyses regarding the interaction between animals

and their environment (Pettorelli et al. 2005; Hancock et al. 2009; Dodge et al. 2013). However, for a given landscape, different layers may show different habitat patterns, depending on the purpose for which they were created (e.g., human land use, vegetation productivity), on the nature of the data source (e.g., number and type of sensors, spatial and spectral resolution), and on the data processing used to develop them (e.g., type of classification algorithm, filtering rules). For these reasons, accurate assessment of animals' habitat use is potentially very susceptible to the inconsistent classification of animal locations within the landscape by different geographic layers (Ewald et al. 2014). For example, Oeser et al. (2020) found that habitat suitability maps for red deer, roe deer and lynx (*Cervus elaphus*, *Capreolus capreolus*, and *Lynx lynx*, respectively) directly derived from Landsat imagery markedly differed from those based upon standard land-cover layers, potentially leading to different management decisions. Yet, surprisingly little attention has been given to the effect of using different geographic products on habitat use estimates (but see Fleming et al. 2004; Neumann et al. 2015; Remelgado et al. 2018), even for habitat assessments of ecotone species (i.e., species exploiting transition areas

N. Morellet
Université de Toulouse, INRAE, CEFS, BP 52627–
31326 Castanet-Tolosan, France

N. Morellet
LTSER ZA PYrénées GARonne,
31320 Auzeville Tolosane, France

S. Focardi
Istituto dei Sistemi Complessi, Sezione di Firenze,
50019 Sesto Fiorentino, Italy

N. C. Bonnot
INRAE, EFNO, F-45290 Nogent-sur-Vernisson, France

B. Gehr
Department of Evolutionary Biology and Environmental
Studies, University of Zurich, 8057 Zurich, Switzerland

M. Heurich
Department of Visitor Management and National
Park Monitoring, Bavarian Forest National Park,
94481 Grafenau, Germany

M. Heurich · M. Kroeschel
Wildlife Ecology and Wildlife Management, Faculty
of Environment and Natural Resources, University
of Freiburg, 79106 Freiburg, Germany

M. Heurich
Institute for forest and wildlife management, Innland
Norway University of Applied Science, Campus Evenstad,
NO-2480 Koppang, Norway

M. Kroeschel
FVA-Wildlife Institute, Forest Research Institute Baden-
Wuerttemberg, 79100 Freiburg, Germany

A. Licoppe
Natural and Agricultural Environmental Studies
Department, DEMNA, Service Public de Wallonie,
5030 Gembloux, Belgium

P. Moorcroft · F. Cagnacci
Organismic and Evolutionary Biology, Harvard University,
Cambridge, MA 02138, USA

L. Pedrotti
Stelvio National Park, 23032 Bormio, Sondrio, Italy

J. Signer
Wildlife Sciences Faculty of Forest Sciences and Forest
Ecology, University of Goettingen, 37073 Göttingen,
Germany

Table 1 Most relevant features of CLC 2012 and TCD 2012

	Corine Land Cover 2012	Tree Cover Density 2012
Satellite sources	SPOT-4, IRS LISS III, RapidEye	IRS-p6, ResourceSat-2, SPOT-4, SPOT-5
Spatial resolution	100 m	20 m
Minimum size of mapping unit	25 hectares	None; pixel-based
Minimum mapping width	100 m	20 m
Geometric accuracy	Less than one pixel	Less than one pixel
Values	44 land cover classes	0–100% TCD
Mapping methodology	Computer-assisted photo-interpretation of pre-processed satellite images	Semi-automatic classification of pre-processed satellite images
Temporal extent	2011–2012	2011–2013
Thematic accuracy	User/producer accuracy ^a : 85.8%/88.1%	User/producer accuracy ^b : 81.6%/89.0%

^aCLC 2012: <https://land.copernicus.eu/user-corner/technical-library/clc-2012-validation-report-1>

^bTCD 2012: <https://land.copernicus.eu/user-corner/technical-library/comparative-validation> (p. 19–23).

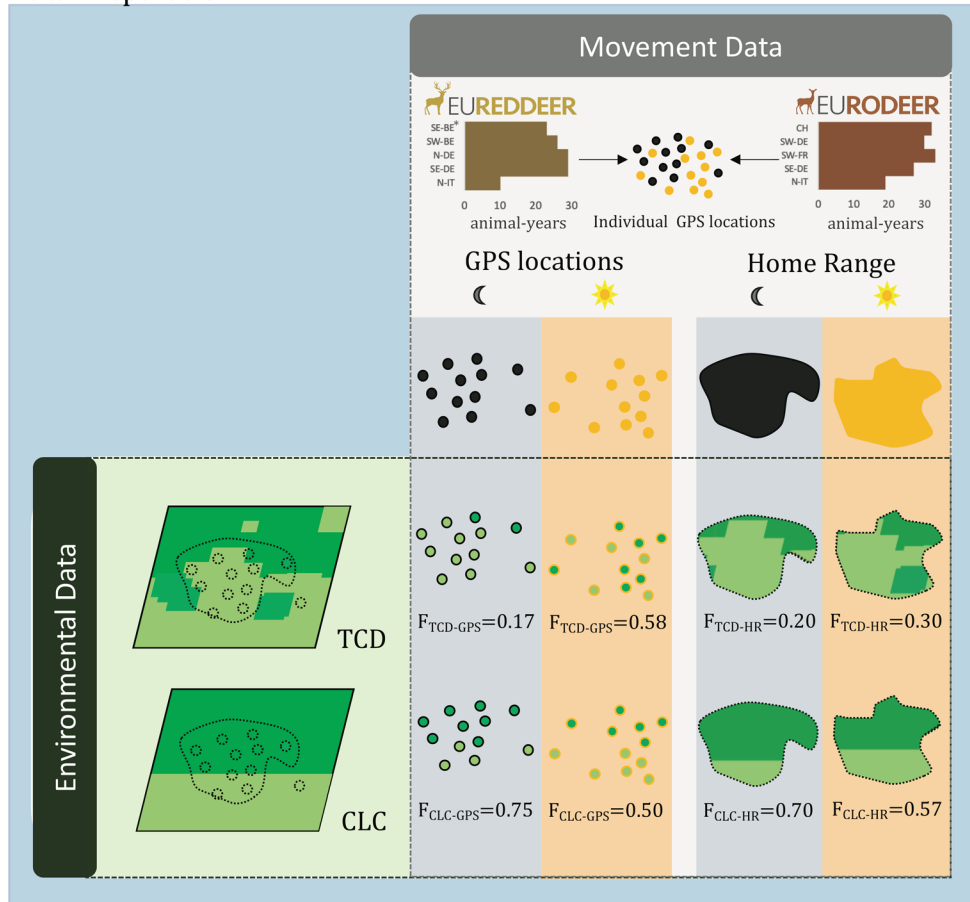
between different vegetation communities, like roe deer) that may be particularly sensitive to small errors in mapping. Ecotone species often prefer landscapes with small habitat patches and high amounts of edge, such as fragmented forest units within human-modified agricultural matrices (Tufto et al. 1996; Rivrud et al. 2009), that may be misclassified in simplified, categorical land cover layers (Pekkarinen et al. 2009).

Patterns in habitat use is also affected by human disturbance, with evidence pointing towards species becoming more nocturnal with increasing human activity. For example, red and roe deer in European landscapes have been shown to be more active during crepuscular and night time hours and to alternate their use of forested habitat to avoid human disturbance—deer have been observed moving from forested, less anthropized refugia during the day to food-rich, yet also more anthropized, open habitats in the cover of darkness (e.g., Rivrud et al. 2009; Bonnot et al. 2013; Padié et al. 2015; Dupke et al. 2017). This observed diel-cycle of forest use has been used not only to measure deer responses to human activity (Bonnot et al. 2013), but also as a proxy for examining effects of hunting and predation risk (Gehr et al. 2018), grazing damage (Rivrud et al. 2009), and temporal exposure to vehicle collision (Bruinderink and Hazebroek 1996; Balčiauskas et al. 2020). Carbillet et al. (2020) showed that roe deer ranging closer to roads and human infrastructure during daytime have higher cortisol levels (evidence of higher stress levels), but only when in open habitats. In this study, we aimed to assess two scales of forest use—fine (using raw GPS

locations) and broad (within the home range derived from the same locations)—of red and roe deer across European landscapes, relying on and comparing the outputs from two pan-European, freely available geographic layers derived from satellite imagery: Corine Land Cover (CLC) and Tree Cover Density (TCD) (Table 1).

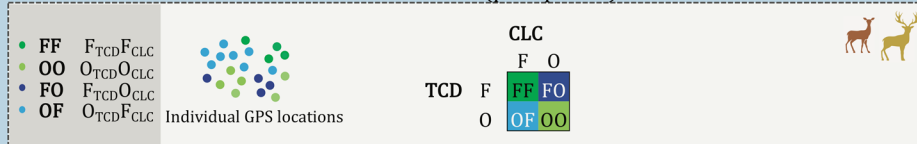
Due to its standardized land cover classification, CLC has been widely used to assess habitat use and selection (e.g., Lundy et al. 2012; De Groeve et al. 2016), habitat suitability (e.g., Schadt et al. 2002; Faluccci et al. 2009; Bosch et al. 2012), and connectivity (e.g., Vogt et al. 2007; Saura et al. 2011) of animal populations ranging in Europe. However, as pointed out by Pekkarinen et al. (2009), CLC filters out forest patches smaller than 25 ha (250 000 m²), implying that small habitat components, such as hedgerows, edges, small forest or open habitat patches, go undetected or get oversimplified. While simplification and generalization are essential for defining broad land cover classes, they might also lead to errors in the environmental classification of animal movement trajectories. In contrast, the high-resolution layer Copernicus TCD is not based upon a minimum size of mapped features, but on the percentage of canopy cover per raster cell (resolution of 20 m). Unlike CLC, TCD does not give any information on land cover types, but only provides a tree cover index. While available for use since 2015, TCD remains underutilized in movement ecology studies based in Europe, to the best of our knowledge (but see De Groeve et al. 2020; Fenton et al. 2021).

Data Preparation

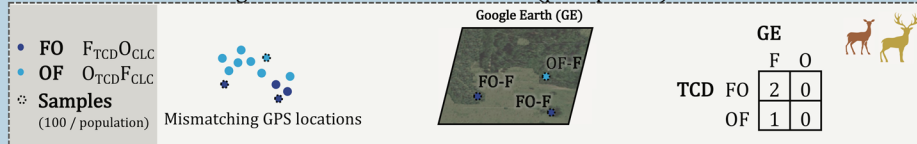


Analysis

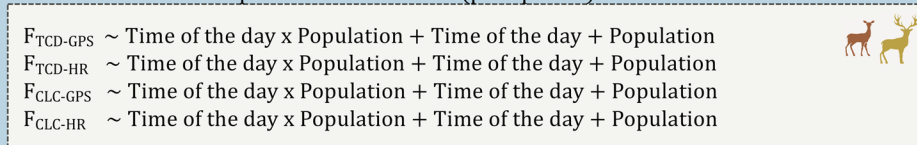
A. Classification Mismatch – Confusion Matrix (per species)



B. Validation with Google Earth – Confusion Matrix (per species)



C. Generalised Least Squares Linear Models (per species)



* Red deer populations: SE-BE: SE Belgium; SW-BE: SW Belgium; N-DE: N Germany; SE-DE: SE Germany; N-IT: N Italy
 Roe Deer populations: CH: Switzerland; SW-DE: SW Germany; SW-FR: SW France; SE-DE: SE Germany; N-IT: N Italy

Fig. 1 Graphical summary of the analyses of red and roe deer habitat use based on TCD and CLC geographic layers. The upper box (Data Preparation) describes the extraction of red and roe deer GPS locations during daytime and nighttime from the Eureddeer and Eurodeer databases, the computation of Kernel Density Estimates for HRs, and their classification with both TCD and CLC as forest or open. As a result, the proportion of forest at the GPS location and HR level, using both layers, is shown. The lower box describes our analysis workflow consisting out of three parts. The upper panel (Classification mismatch) indicates the comparison of GPS locations classified using the two layers, to identify mismatches. These happen when one GPS location is classified as open by TCD and as forest by CLC (OF in the figure, light blue points), or vice versa (FO in the figure, dark blue points). The central panel (Validation) shows the workflow of the validation of samples of mismatching GPS locations (light blue/dark blue) using Google Earth orthophotos. The lower panel (Analysis-GLSM) indicates modelling of forest use, at day and night, by the two species (full model), both at GPS location and HR level. The model has been applied to data classified with TCD and with CLC separately. (Color figure online)

To assess the inconsistencies in the estimates of deer habitat use based on two contrasted geographic layers like TCD and CLC, we first evaluated the classification mismatch of red and roe deer GPS locations based on the two layers; then, we modelled day/night forest use at the GPS location and home range (HR) level using both layers and compared the outputs (Fig. 1; Table 2). We outlined our research questions, predictions and analytical steps in Table 2.

Materials and methods

Movement data

From five populations of each species (i.e. 10 populations in total) we derived space use metrics for a total of 85 red deer and 105 roe deer (Fig. 1—Data Preparation) from the Eureddeer and Eurodeer databases (euromammals.org, e.g., Peters et al. (2019); see Online Appendix S1 and Fig. 2 for a description of the populations and Urbano et al. (2021) for a general presentation of the database). The use of different populations distributed across Europe allowed us to have a good representation of the different forested landscapes across the continent. For each individual deer, we sub-sampled two GPS locations a day, at noon and midnight ($12 \text{ h} \pm 1 \text{ h } 30 \text{ min}$, $0 \text{ h} \pm 1 \text{ h } 30 \text{ min}$), so to exclude GPS locations that might occur during crepuscular periods and therefore ensure an

unambiguous representation of day and nighttime habitat use. We only included summer GPS locations (from May to October) to avoid the inclusion of seasonal migration movements, that could confound our analyses. We considered GPS locations from the same individual for different years separately, leading to an average of 160 ± 26 and 170 ± 21 fixes for day and night, respectively. This resulted in a dataset of 117 animal-years for red deer and 141 animal-years for roe deer (Fig. 1), with a total of 39,522 and 45,529 GPS locations, respectively (see Online Appendix S2 for a complete list of the individuals, summer GPS location samples and monitoring periods).

We computed the day and night home ranges (HRs) for each summer GPS location sample using Kernel Density Estimation (KDE). A KDE produces a utilization distribution resulting from a sum of unimodal distributions centred around each GPS location, whose spread is controlled by a smoothing parameter. KDEs were calculated using the function KernelUD of the R package adehabitatHR (Calenge 2011), using a bivariate Gaussian kernel, the plug-in estimate for the smoothing parameter ($s_{\text{avg}} n^{1/6}$, with s_{avg} the average standard deviation of x and y coordinates and n the number of GPS fixes) and the 90% isopleth (Börger et al. 2006).

Classification of movement data with environmental data: TCD and CLC

To estimate the diel use of forest by deer (Fig. 1—Data Preparation), we classified each sampled GPS location as forest or open, and described each HR by its proportion of forest and open habitats. For this purpose, we intersected GPS locations and HRs with both Copernicus (TCD 2012; Table 1) and Corine (CLC 2012; Table 1), extracting the habitat values at their corresponding positions. We chose the 2012 layers being the closest in time to most of the roe and red deer individuals monitored by GPS (Table S2.1).

To estimate the use of forest vs open habitat by deer we needed to reclassify the original TCD and CLC layers into binary layers of forest and open, as is common practice in habitat use or suitability studies focused on forest species (e.g., Bosch et al. 2012; Falucci et al. 2009). We reclassified the TCD raster to a binary layer where a pixel is considered forest at a minimum canopy cover threshold of 10%, in line with the FAO (Food and Agriculture Organisation) official

Table 2 List of research questions, Q, and relative predictions, P, with corresponding analytical steps

	Research questions (Q) and predictions (P)	Analysis
<i>Classification mismatch (A)</i>		
Q.A1	Do we observe a classification mismatch for used GPS locations between TCD and CLC? How large is the classification mismatch? Do we observe differences in the classification mismatch between the two species?	Confusion matrix A, Table 3A
P.A1	We expected a difference in the classification mismatch between the two species, with more mismatches for roe deer, which is known to be ecotonal (and thus likely to use areas sensitive to misclassification)	
Q.A2	Are GPS locations in small habitat patches more prone to be classified differently by the two layers?	Patch analysis
P.A2	Given that CLC uses composite land cover classes for mixed landscapes we expected a high classification mismatch for small patches	
Q.A3	For those mismatching locations, which of the two layers is more often correct?	Confusion matrix B, Table 3B
P.A3	We expected TCD to be more often correct, given that it is specifically developed to map forest proportion	
<i>Diel habitat use analysis (B)</i>		
Q.B1	Do red and roe deer use forest more during the day than night, and, if so, is this behaviour consistent across European populations?	Generalised least squares models
P.B1	We predicted that red deer and roe deer use forests more during the day to avoid human disturbance consistently across European populations	
Q.B2	Do estimates of diel forest use differ between the geographic layers CLC and TCD?	
P.B2	We predicted that the estimates of diel forest use would differ between the two layers, given their different features, specifically with TCD estimating a higher difference between day and night forest use than CLC	
Q.B3	If so, is this difference more pronounced at the GPS location level than at the HR level?	
P.B3	We expected this discrepancy between the two layers to be higher at the GPS location than at the HR level, given that in the latter case habitat use estimates are averaged across the HR area	
Q.B4	Are roe deer diel forest use estimates more different between TCD and CLC compared to red deer?	
P.B4	We predicted a greater discrepancy for roe deer, given its tendency to exploit ecotones and small patches	

definition of forest (Global Forest Resources Assessment 2020), and as a conservative choice after a sensitivity analysis that showed marginal change in the output classification with thresholds up to 40% (see Online Appendix S3). Pixels with a forest canopy cover < 10% were therefore considered as open habitats. The CLC original vector layer was rasterized to a resolution of 20 m to match the grid of TCD, based on the class of the vector feature covered by the raster pixels, and considering the class of the feature with

the larger area when two features were juxtaposed. We assigned the class ‘forest’ to all pixels belonging to the classes broad-leaved, coniferous and mixed forest (311, 312, 313), and ‘open’ to all others. We compared our raster layer to the original 100 m CLC layer, and to a CLC classification including also agroforestry class as ‘forest’, finding no relevant differences (Online Appendix S3). Note that in both layers, open habitats may also include non-habitats, such as roads and infrastructure.

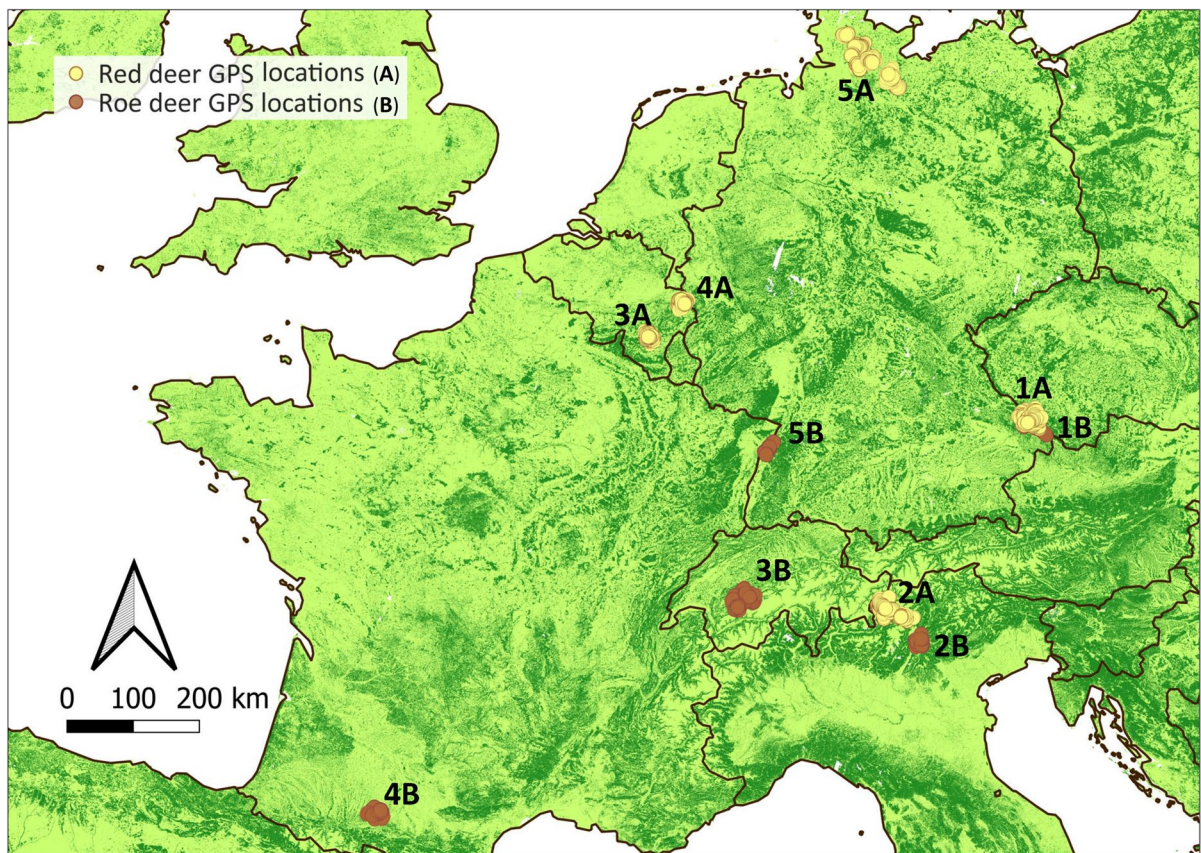


Fig. 2 Red and roe deer GPS locations (in ochre and brown respectively) mapped on the TCD geographic layer in five different populations per species. Red deer populations concern SE-Germany (1A), N-Italy (2A), SW-Belgium (3A), SE-

Belgium (4A), N-Germany (5A). Roe deer populations concern SE-Germany (1B), N-Italy (2B), Switzerland (3B), SW-France (4B), SW-Germany (5B). See Online Appendix S1 for a description of the study areas

Classification mismatch between TCD and CLC in red and roe deer GPS locations

We compared the TCD and CLC classifications of red and roe deer GPS locations (Fig. 1, Analysis panel, part A) by computing a confusion matrix for each species. A confusion matrix typically aims to compare a predicted class to an actual (‘true’) class. In this first objective (Table 2, Q.A1), we used it to compare two forest-open classifications that can be both considered predictions. Hence, the mismatch categories in the matrix (FO and OF, see below) indicate the relative inconsistency between the two classifications. Specifically, our confusion matrices include four categories: GPS locations that were *consistently* classified by TCD and CLC either as forest or open habitat (i.e.,—FF and OO, Fig. 1); GPS locations *oppositely*

classified by TCD and CLC (i.e. GPS locations classified as forest by TCD, but as open by CLC, or vice versa resulting in a classification mismatch—FO and OF, Fig. 1).

To test whether the size of the habitat patches was particularly associated with a classification mismatch among the two layers (see Table 2), we used the FRAGSTATS software for landscape structure analysis (McGarigal et al. 2012) and measured the size of open or forest units used by deer (i.e., with GPS locations falling therein) as determined by TCD and compared the median size of those units that were *consistently* classified by TCD and CLC (i.e. FF, OO) to the median size of units that were *oppositely* classified by TCD and CLC (i.e. FO, OF) (Wilcoxon rank sum test).

Classification mismatch validation with Google Earth

To further compare inconsistent classifications between both layers, we also conducted a ground-truth validation with a random sub-sample of 500 GPS locations per species (i.e., 100 GPS locations per population, equal to 1000 GPS locations in total) with mismatched classification (i.e., FO, OF; Fig. 1, Analysis panel, part B). We overlaid these GPS locations with orthophotos from Google Earth (Gorelick et al. 2017) that we assumed as the “ground truth”. To match the reference time of orthophotos with that of raster layers, we used the Google Earth function “Historical Imagery” to retrieve older images. We then visually interpreted whether a GPS location was in forest or open habitat in the Google Earth Pro software. In this second objective (Table 2, Q.A3), we used a confusion matrix to compare opposite predictions from the two geographic layers to ground-truth values, instead of comparing a single geographic layer to ground-truth, as customarily done to estimate accuracy (Stehman 1997; Pekkarinen et al. 2009). Hence, in this case the matrix indicates which of the two predictions was correct. Thus, we could determine which of the two layers had correctly classified each GPS location in retrospect and summarised the results of this validation as a post-validation confusion matrix for each species, with two dimensions (GPS locations *oppositely* classified by TCD and CLC and Google Earth) and two classes (forest and open habitat).

Day versus night use of forest in roe and red deer at the GPS and home range scales as determined by TCD and CLC

We modelled the proportion of forest used, respectively by red ($n=117$ animal/year) and roe deer ($n=141$ animal/year), using Generalized Least Squares models (GLS) with a Gaussian distribution of residuals (Aitken, 1935; Fig. 1, Analysis panel, part C). Our response variables were F_{GPS} , namely the proportion of GPS locations in forest habitat per individual, and F_{HR} , namely the proportion of forest habitat within the HR per individual, modelled as a function of the explanatory variables time of the day (daytime vs. nighttime), and population (five populations for each species; Fig. 1, Analysis panel, part C; Fig. 2). We used GLS, rather than an Ordinary Least Squares model, to correctly describe the differing

variances among time of day and populations. Our data met the GLS model assumptions. We compared all models with the different combinations of the two explanatory variables time of the day and population, both the additive effects and their two-way interaction. We added two further models with the variance term for population and time of day, respectively, when the predictors were included as additive factors. This resulted in eight models for each species (red and roe deer), space use metric (GPS locations and HRs), and layer used (TCD and CLC). The models were ranked according to the Akaike Information Criterion corrected for small sample sizes (AICc, Burnham and Anderson 2002; see Online Appendix S5, Tables S5.1–S5.8). Predictions in day vs nighttime forest use are visualized in Fig. 4, comparing predictions derived from CLC and TCD within each panel, for each metric and species combination (GPS—roe deer; GPS—red deer; HR—roe deer; HR—red deer).

Results

Classification mismatch between TCD and CLC in red and roe deer GPS locations

For red deer, 22% of GPS locations were *oppositely* classified by TCD and CLC layers (8959 out of 39,522 GPS locations, Table 3.A, top-left panel). Specifically, 13% of the GPS locations were classified as forest by TCD but as open by CLC (Table 3.A, dark blue, ‘FO’), and 9% as open by TCD but as forest by CLC (Table 3.A, light blue, ‘OF’). Similarly, 18% of roe deer GPS locations were *oppositely* classified by TCD and CLC (8294 out of 45,529 GPS locations, Table 3.A, bottom-left panel), with 10% classified as forest by TCD but as open by CLC, and vice versa for 8% of the GPS locations. Thus, prediction P.A1 was not confirmed, since both species presented a similar percentage of GPS locations *oppositely* classified by TCD and CLC, and even a slightly greater percentage of misclassification for red deer than for roe deer. Interestingly, despite such mismatched classification of *single* GPS locations, the *overall* proportion of GPS locations classified as forest or open was very similar when using the two layers (overall proportion of GPS locations classified as forest for red deer: 67% with TCD, 63% with CLC; for roe deer: 38% with TCD, 36% with CLC). This result is showcased

Table 3 (A) Confusion matrices (See also Fig. 1—Analysis Classification Mismatch) comparing the TCD and CLC classifications of red and roe deer GPS locations as forest or open habitats (output for all individuals across the five populations combined).

A. TCD/CLC Classification of GPS Locations				B. Validation of Mismatched Classification				
TCD	CLC		Total	TCD/CLC	Google Earth		Total	
	F	O			F	O		
	F	21289[54%]			5219[13%]	26508[67%]		$F_{TCD}O_{CLC}$
O	3740[9%]	9274[24%]	13014[33%]	$O_{TCD}F_{CLC}$	46[10%]	158[33%]	204[43%]	
		25029[63%]	14493[37%]	39522		274[58%]	201[42%]	475

TCD	CLC		Total	TCD/CLC	Google Earth		Total	
	F	O			F	O		
	F	12568[28%]			4637[10%]	17205[38%]		$F_{TCD}O_{CLC}$
O	3657[8%]	24667[54%]	28324[62%]	$O_{TCD}F_{CLC}$	58[12%]	74[16%]	132[28%]	
		16225[36%]	29304[64%]	45529		328[70%]	140[30%]	468

Total number of GPS locations and their relative percentages (in brackets) are indicated for all cases, i.e. consistent classification between TCD and CLC location in green (dark for forest, light for open), and opposite classifications between TCD and CLC location in blue (dark blue: TCD classification as forest but CLC classification as open— $F_{TCD}O_{CLC}$; light blue: TCD classification as open but CLC classification as forest— $O_{TCD}F_{CLC}$).

(B) Post-validation confusion matrices for a sub-sample of 500 GPS locations per species with a TCD/CLC mismatched classification, using orthophotos from Google Earth as ground truth. Of these, only 475 GPS locations for red deer and 468 for roe deer could be validated, so that proportions do not exactly sum up to 1

with individual examples in Fig. 3 (upper panels, red deer; lower panels: roe deer). In the right-hand panel, the dark-blue and light-blue habitat patches are *oppositely* classified by TCD and CLC. Consequently, the intersecting GPS locations show a mismatched classification. Visual inspection in Google Earth® shows that *oppositely* classified habitat patches, in this example, correspond to small fragments or linear features.¹ In particular, the patches classified as forest by TCD, but open by CLC (dark blue), are small woody fragments, whereas patches classified as open habitat by TCD, but forest by CLC (light blue), are small openings or roads. This example was also confirmed at the population level, since GPS locations *oppositely* classified by TCD and CLC were found in habitat units significantly smaller than average,

confirming our prediction P.A2. Indeed, the median size of used forest units (as determined by TCD) that were *oppositely* classified by TCD and CLC (FO) was 3468 ha and 68 ha for red and roe deer respectively, while the median size of used forest units *consistently* classified by TCD and CLC (FF) was 5302 ha and 170 ha for red and roe deer respectively (Wilcoxon Tests: red deer $W = 40,459,941$, $p < 0.001$; roe deer $W = 17,327,785$, $p < 0.001$). Similarly, used open habitat units that were *oppositely* classified by TCD and CLC (OF) had a median size of 4 ha in red deer and 102 ha in roe deer, while those that were *consistently*

¹ Deer bounding box coordinates (WGS84) in Fig. 3:
 Red deer—5.3461858 50.0663290; 5.4569154 50.1124290.
 Roe deer—7.5515032 46.6170573; 7.5967323 46.6481488.

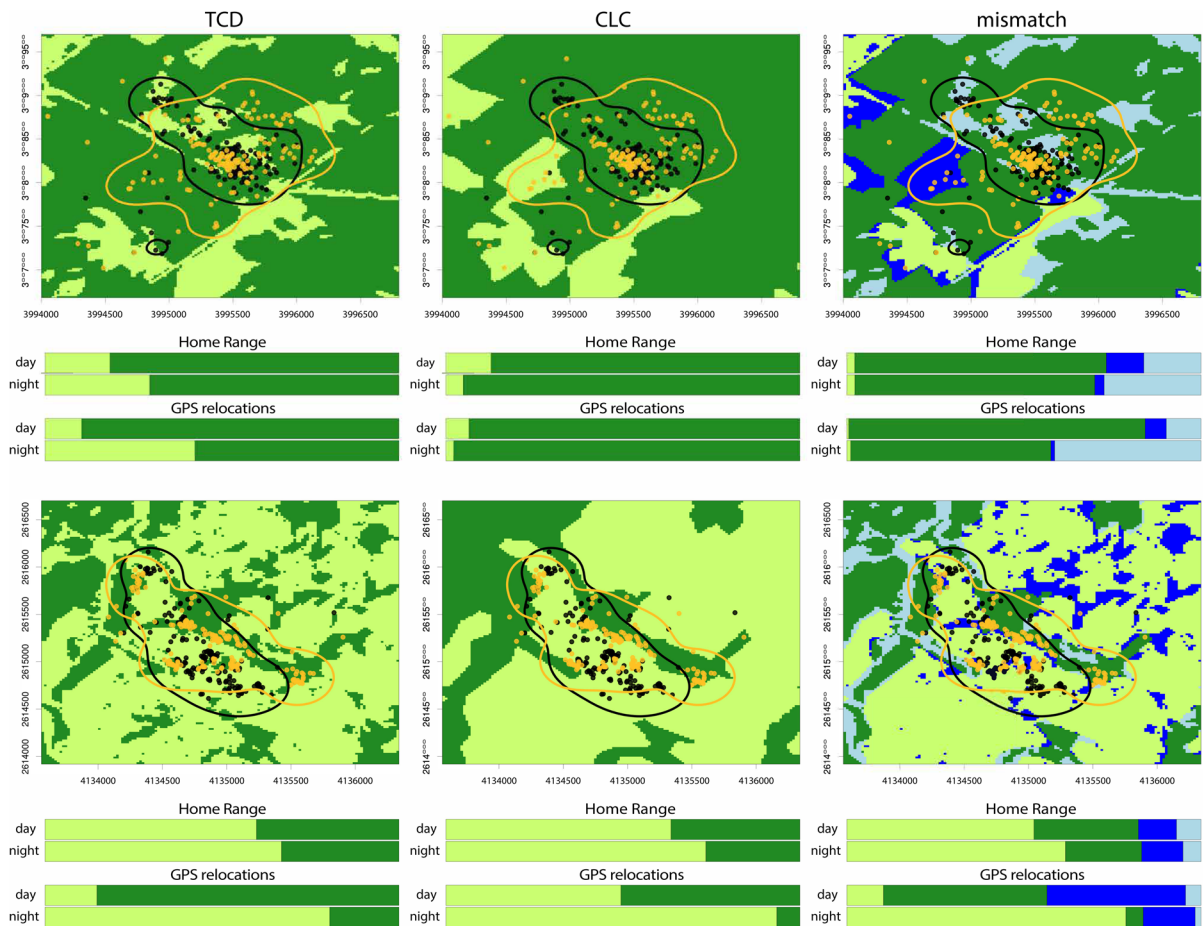


Fig. 3 Summer GPS locations and HRs (HR, 90% KDE; yellow for day and black for night) for one red deer (upper panels: ID 762, adult female, SW-Belgium, summer 2010) one roe deer (lower panels: ID 2285, adult male, Switzerland, summer 2013) overlaid onto TCD (left panel) and CLC (middle panel) layers. The bar charts below the plots indicate the proportion of forest (dark green) and open habitat (light green) within HRs and for GPS locations as classified by the respective lay-

classified by TCD and CLC (OO) had a median size of 753 ha in red deer and 856 ha in roe deer (Wilcoxon Tests: red deer $W=5,359,340$, $p<0.001$; roe deer $W=26,076,120$, $p<0.001$). Hence, *oppositely* classified GPS locations primarily occurred in small openings for red deer and both small forest patches and openings for roe deer. This is likely linked with the prevalent use of small forest patches by roe deer, when forest is used (23% of roe deer GPS locations classified as forest by TCD were in forest patches smaller than 25 ha (see above, minimum mapping

ers. The right column illustrates the classification mismatch between the two raster layers, with consistent classification between TCD and CLC indicated in green (dark for forest, light for open), and opposite classifications between TCD and CLC in blue (dark blue: TCD classification as forest but CLC classification as open; light blue: TCD classification as open but CLC classification as forest). See also the colour codes in Table 3. (Color figure online)

unit for CLC); 4% of GPS locations for red deer) and of small clearings by red deer, when open habitat is used (32% of red deer GPS locations classified as open by TCD were in open patches smaller than 25 ha; 6% of GPS locations for roe deer).

Classification mismatch validation with Google Earth

Finally, the validation analysis on 500 GPS locations per species that were *oppositely* classified by TCD and CLC (i.e., OF and FO) showed that, according to the ground-truth layer, TCD classification was more often correct

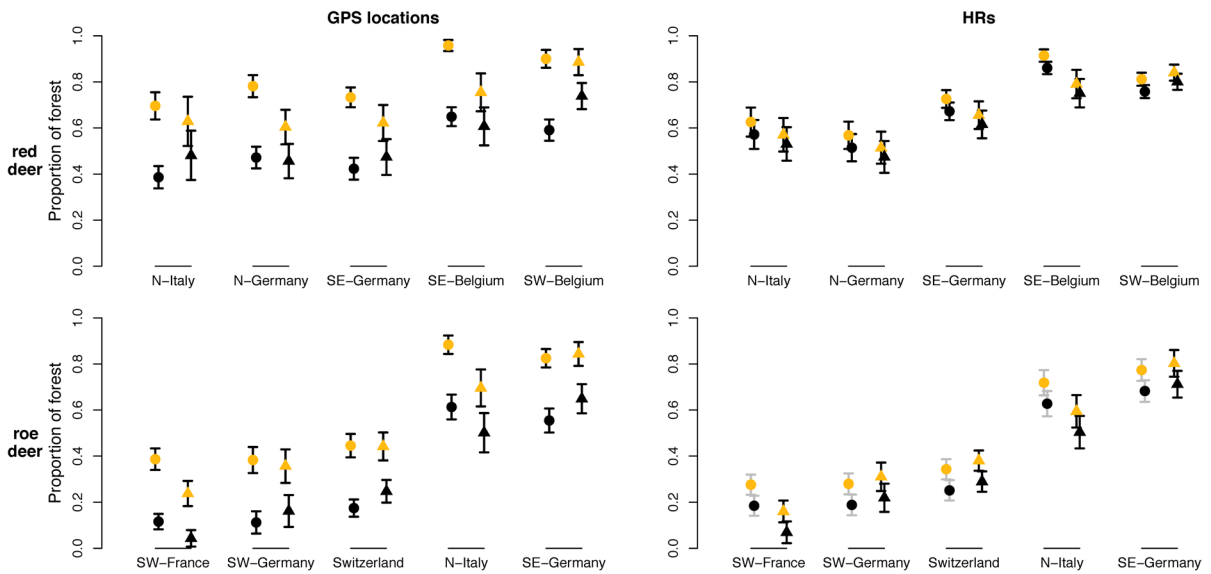


Fig. 4 Model predictions of red and roe deer forest use during day and night. Upper and lower panels are respectively the model predictions for red and roe deer and left and right for GPS location and HR levels. Model predictions based on TCD and CLC layers are indicated respectively by circles and

triangles, and the colour distinguishes the predictions for day and night (in yellow and black respectively). All best models included a Generalized Least Squares estimate of the variance, except HR-TCD for roe deer (grey bars, see also Table S5.9). (Color figure online)

than CLC, confirming P.A3: 81% for red deer (386 out of 475) and 74% of these for roe deer (344 out of 468) were correctly classified by TCD (Table 3.B). Conversely, 19% of the GPS locations for red deer (89 out of 475) and 26% of the GPS locations for roe deer (124 out of 468) were correctly classified by CLC. For 5% of the *oppositely* classified GPS locations (57 out of 1000) we could not determine the habitat type through visual interpretation of the orthophotos. When comparing populations, the proportion of GPS locations correctly classified by either TCD or CLC slightly differed, but TCD outperformed CLC in all cases (see Online Appendix S4 for more details).

Day versus night use of forest in roe and red deer at the GPS and home range scales as determined by TCD and CLC

Confirming our prediction P.B1, red and roe deer forest use was greater during daytime than nighttime. Forest use also varied across populations, although the difference observed between daytime and nighttime forest use was consistent across populations (no two-way interaction retained between time of the day and population, see Online Appendix S5). These patterns were more pronounced with TCD, especially

when GPS locations were used instead of HRs (Fig. 4 and Table S5.9, S5.10).

The difference in the use of forest from day to night in both species was larger when using TCD than with CLC, confirming our prediction P.B2. For red deer, the difference in the use of forest from day to night showed on average a decrease of 39% with TCD (circles in Fig. 4, top left panel; Table S5.10), compared to a 22% decrease with CLC (triangles in Fig. 4, top left panel; Table S5.10), at the GPS location level. Similarly, for roe deer, the difference in the use of forest between day and night showed on average a decrease of 53% with TCD (circles in Fig. 4, bottom left panel; Table S5.10), and 46% with CLC (triangles in Fig. 4, bottom left panel; Table S5.10). Also, CLC-based estimates showed a larger within-population variability: the average standard error across populations for red deer was 0.03 and 0.06 for TCD and CLC, respectively; for roe deer, 0.03 and 0.04 for TCD and CLC, respectively (see Table S5.10). On average, the absolute difference between estimated forest use by TCD and CLC was 11.5% for red deer and 6.95% for roe deer during daytime, and respectively 7.01% and 8.02% during nighttime. Hence, while we confirmed our prediction P.B2 that the

estimates of diel forest use differed between the two layers, we did not find greater discrepancy between TCD and CLC layers for roe deer (P.B4) given that estimates showed a similar difference between layers in roe and red deer. Interestingly, during daytime forest use estimates were prevalently larger for TCD (9 out of 10 populations), while during nighttime CLC estimates were often larger (6 out of 10 populations). The differences between day and night use of forest were much less evident at the HR level, both for red and roe deer (Fig. 4, right panels; Table S5.10). In addition, differences between forest use estimates obtained with TCD and with CLC were also reduced at the HR level compared to the GPS location one (P.B3), although not markedly (i.e. circles and triangles are closer together in the right panels than in the left panels of Fig. 4; see Table S5.10).

Discussion

We estimated the diel use of forest in five populations of red deer and five populations of roe deer across Europe with two different geographic layers, using two spatial scales of analysis. First, we showed that about 20% of the GPS locations (23% for red deer and 18% for roe deer) were classified *oppositely* by CLC and TCD, although the overall proportion of forest and open habitat was similarly estimated by the two layers (Table 1A), raising the need for further evaluations on the use of these layers for animal ecology applications. Second, our case study shows that both deer species consistently used more forest habitat during the day than at night across Europe (as much as 40–50% more; Table 1B). Ungulates inhabiting European human-dominated landscapes must cope with high human densities and an extensive road network, and have consequently adjusted their activity pattern and habitat use to decrease the exposure to human disturbance (Bonnot et al. 2020). Our findings indicate that open areas, generally rich in herbaceous plants but also riskier in terms of exposure to human activities (Abbas et al. 2011; Bonnot et al. 2013), are visited substantially more during nighttime and conversely, forested, less anthropized habitats are visited more during the day. However, this crucial behavioural strategy, estimated via the proportion of forest use, was estimated differently using the two geographic layers here considered, TCD and CLC, and at

the two spatial scales of the analysis, GPS locations and HRs.

By sampling 1000 of the GPS locations that were *oppositely* classified by CLC and TCD and annotating them as forest or open according to orthophotos of Google Earth, we found that TCD was more accurate than CLC (Table 3 and Online Appendix S4; P.A3). Indeed, TCD and CLC have an overall similar classification accuracy (Table 1), but deer often use those areas, such as forest openings and edges, that are more prone to misclassification. Indeed, we found that the GPS locations classified *oppositely* by CLC and TCD were found in patches significantly smaller compared to the consistently classified GPS locations (P.A2). This highlights that the sensitivity of animal habitat use analysis to misclassification will depend on how well geographic layers describe small-scaled habitat features used by animals.

When we modelled deer differential use of forest in diurnal and nocturnal hours using the two layers, we obtained different results at the GPS location and HR level, as expected (P.B3). In particular, TCD pointed at a greater difference in the use of forest between daytime and nighttime at the GPS location level, i.e. a greater deer day-night shift, than CLC, resulting in potentially contrasting conclusions when using either layer. Indeed, using CLC to estimate day-night shifts in the use of forest by deer would lead to an underestimation of this behavioural strategy that TCD identified consistently across individuals and populations, instead. On the other hand, at the HR level, forest use estimates were only marginally different between the two layers, and a day/night shift was hardly detectable by using either layer. To sum up, we found that the forest use estimates depended not only on the geographic layer used, but also on the spatial scale of analysis (i.e., GPS locations or HR). The analysis at the GPS location scale allowed to better detect the day-night shift in the use of forest, but was also more sensitive to the specific geographic layer used. For this reason, special attention should be given when habitat use is evaluated at the level of GPS locations or trajectories, for example in Resource Selection Analysis (especially Step Selection Functions, Thurfjell et al. 2014, and integrated Step Selection Analysis, Avgar et al. 2016), or in the analysis of sequential habitat use (Sequence Analysis Methods, De Groot et al. 2016, 2020).

Best practice in the use of geographic layers for movement ecology analysis: considerations and limitations

The potential problem of obtaining different results from geographic layers has been given relatively little attention in movement ecology. Since maps are only representations of reality, each with their own limitations and biases (Monmonier 2018), we advise to treat them critically when estimating animals' habitat use. Our results go beyond the comparison of two specific geographic layers as they demonstrate the need to account for potential sources of errors inherent in the use of geographic layers in animal ecology.

A first general recommendation is to always visually compare layers and select those that better describe the habitat features used by the species of interest. Fleming et al. (2004) suggested starting with the highest resolution imagery available to better assess local-scale relationships when examining habitat associations. Such comparisons can be performed in various GIS environments such as QGIS, ArcGIS, and common programming environments specialized in spatial analysis such as R and Python. A typical example of a comparison between layers is provided in Fig. 3, where we showcase the mismatch between CLC and TCD and their respective reclassifications both with maps and proportional barplots.

Next, users should measure the accuracy of geographic layers, when possible, with respect to the habitat features of interest. Remote sensing products used for habitat or land features identification are often validated through visual interpretation of orthophotos for a random or stratified sample of locations/areas (Pekkarinen et al. 2009). For applications in movement ecology, we recommend applying a validation using orthophotos both for random locations and for locations used by the animals. The former will show the general accuracy of a habitat layer, while the latter will allow assessing whether those areas specifically used by animals (for example, small habitat patches) are more sensitive to misclassification. Here, for the general accuracy we relied on the official accuracy report that accompanied the products (see Table 1), and focussed on locations used by animals. However, local differences on general accuracy have been reported (De Groot 2018, Online Appendix S3), so if possible also random locations may be evaluated.

Another typical critical step in the workflow of spatial analysis is the reclassification of the original geographic layer. This step, which is often necessary before performing animal habitat use analysis (e.g., Falcucci et al. 2009; Bosch et al. 2012; De Groot et al. 2016), may consist of merging land cover classes (e.g. CLC) or defining a specific value as the threshold (e.g. TCD) to distinguish different habitats in a raster layer. Reclassifications can introduce further inaccuracy and should be carefully defined, as we did in the present work through a sensitivity analysis (Online Appendix S3) that compared different aggregations of CLC-classes and different forest percentage thresholds of TCD. In this work, a reclassification was essential for directly comparing CLC and TCD, however we recommend using original input values of a layer where possible.

While validation is essential, researchers may not limit their analysis to a single geographic layer. Ecological models can be run in parallel with multiple geographic layers expressing the same environmental covariate, as done in this study (Fig. 4). This could further help to disentangle the ecological effect of the covariate, from the characteristics of the data source. Our results suggest that TCD performs better for the analysis of forest use and allowed to identify day/night shift by deer. However, CLC provides information on many other land use categories for which harmonized European layers are still missing, such as agricultural fields. Its use in movement ecology studies is useful but should consider the limitations on spatial resolution and class aggregation that we further evidenced in this work.

Here we used static layers that refer to a relatively long period (6 years for CLC and 3 years for TCD) to match instantaneous animal relocations. The *temporal* mismatch between the habitat types represented by the geographic layers and those experienced by animals can represent a source of bias. Static layers can become outdated within a relatively short interval of time, for example because of local or large-scale changes in forest landscapes due to insect outbreaks (Oeser et al. 2021), tempests (Gaillard et al. 2003), fires (Silva et al. 2014) and logging activities. New satellite sensors releasing almost real-time observations, together with remote processing engines (e.g. Google Earth Engine) represent the next generation of opportunities (Oeser et al. 2020), allowing more

dynamic mapping to match animal movement and behaviour.

In conclusion, the choice of the geographic layer to utilize should be considered as a crucial step in habitat use and selection studies (Oeser et al. 2020), which requires careful evaluation of the layer-specific characteristics with respect to the target species ecology and behaviour. Here, we suggest to carefully evaluate geographic layers, paying attention to spatial resolution, temporal match, classification accuracy in respect to the spatial scale of animal space use analysis.

Acknowledgements This paper was conceived and written within the EUROMAMMALS/EURODEER collaborative project (Paper No. 016 of the EURODEER series; www.eurodeer.org). The co-authors are grateful to all members for their support to the initiative. We thank all the field assistants that contributed to the collection of the data in the field. The EUROMAMMALS spatial database is hosted by Fondazione Edmund Mach. We are grateful to the Copernicus project for the use of free data (European Union, EEA—European Environment Agency). Here we confirm that all conditions are met for free, full and open access to this data set, established by the Copernicus data and information policy Regulation (EU) No 1159/ 2013 of 12 July 2013.

Author contributions MS and JDG conducted the research with an equal contribution and conceived the study idea and the study design together with FC. NVdW, BDB and MG also contributed to the development of the study idea. NM, NB, BG, MH, MK, AL, LP, JS and FC provided the datasets and discussed the progress of the study in the context of Eurodeer meetings and working groups. MS, JDG, FC, EvL and SF conducted the data analyses. The first draft of the manuscript was written by MS, JDG and FC and critically commented and reviewed by all co-authors. All authors read and approved the final manuscript.

Funding JDG was supported by Fondazione Edmund Mach—FIRST PhD School, Special Research Fund (BOF; Grant No. 01sf2313) of Ghent University and Fund for Scientific Research Flanders Belgium (Grant No. G.0189.12N). Research Foundation—Flanders (FWO), grant number V417616N supported JDG as visiting student at Harvard University. FC was supported by the Sarah and Daniel Hrdy Fellowship 2015–2016 at Harvard University/OEB during part of the development of this ms. The GPS data collection of the Fondazione Edmund Mach was supported by the Autonomous Province of Trento under grant number 3479 to FC (BECOCERWI—Behavioral Ecology of Cervids in Relation to Wildlife Infections), and by the help of the Wildlife and Forest Service of the Autonomous Province of Trento and the Hunting Association of Trento Province (ACT). The GPS data collection of the CEFS-INRAE was supported by the “Move-It” ANR grant ANR-16-CE02-0010-02. The GPS data collection of SW-Germany was funded by the federal state of Baden-Wuerttemberg. BG was supported by the Federal Office for the Environment.

Data availability All raw data are stored in the EURODEER spatial data base hosted by the Fondazione Edmund Mach (<https://euromammals.org>) and can be accessed upon login. The subset of the data used in the current analysis will be made available on Zenodo upon acceptance.

Declarations

Conflict of interest The authors have no conflicts of interest to declare that are relevant to the content of this article.

Ethical approval Roe and red deer captures and collaring were compliant to national and international welfare regulations, and approved as follows. For red deer populations: SE-Germany (1A): The research program in the Bavarian Forest is managed by the Administration of the Bavarian Forest National Park. Game captures were conducted in accordance with European and German animal welfare laws. The experiment was designed to minimize animal stress and handling time, and to ensure animal welfare, as defined in the guidelines for the ethical use of animals in research. Animal captures and experimental procedures were approved by the Ethics Committee of the Government of Upper Bavaria and fulfils their ethical requirements for research on wild animals (Reference number 55.2-1-54-2531-82-10); N-Italy (2A): Parco Nazionale dello Stelvio marked animals according to standard protocols approved by the National Wildlife Institutes (Istituto superiore per la Protezione e Ricerca Ambientale, ISPRA); SW-Belgium (3A) and SE-Belgium (4A): Capture and GPS-collaring of wild game complied with the Regional law of Wallonia (M.B. 14.07.2011); N-Germany (5A): GPS collaring complied with German laws on animal welfare and were approved by the veterinary bureau of the corresponding counties. For roe deer populations: SE-Germany (1B): Same statement as for the red deer population 1A; N-Italy (2B): animal handling practice, such as captures and collar marking, complied with the Italian laws on animal welfare and has been approved by the Wildlife Committee of the Autonomous Province of Trento, 09/2004S; Switzerland (3B): The animal capture and handling protocols were authorized by the cantonal veterinary and animal welfare services with permit number BE75/11; SW-France (4B): prefectural order from the Toulouse Administrative Authority to capture and monitor wild roe deer and agreement no. A31113001 approved by the Departmental Authority of Population Protection; SW-Germany (5B): The animal capture and handling protocols were authorized by the animal welfare and hunting administration of the federal state of Baden-Wuerttemberg, Germany (RP Freiburg; G-09/53).

Consent to participate All authors consented to participate in this work.

Consent for publication All authors consented to publish this work.

Open Access This article is licensed under a Creative Commons Attribution 4.0 International License, which permits use, sharing, adaptation, distribution and reproduction in any medium or format, as long as you give appropriate credit to the original author(s) and the source, provide a link to the Creative Commons licence, and indicate if changes were made. The images or other third party material in this article are included

in the article's Creative Commons licence, unless indicated otherwise in a credit line to the material. If material is not included in the article's Creative Commons licence and your intended use is not permitted by statutory regulation or exceeds the permitted use, you will need to obtain permission directly from the copyright holder. To view a copy of this licence, visit <http://creativecommons.org/licenses/by/4.0/>.

References

- Abbas F, Morellet N, Hewison AM, Merlet J, Cargnelutti B, Lourtet B, Angihault JM, Daufresne T, Aulagnier S, Verheyden H (2011) Landscape fragmentation generates spatial variation of diet composition and quality in a generalist herbivore. *Oecologia* 167:401–411
- Aitken AC (1935) On least squares and linear combination of observations. *Proc R Soc Edinb* 55:42–48
- Avgar T, Potts JR, Lewis MA, Boyce M (2016) Integrated step selection analysis: bridging the gap between resource selection and animal movement. *Methods Ecol Evol* 7:619–630
- Balčiauskas L, Wierzchowski J, Kučas A, Balčiauskienė L (2020) Habitat suitability based models for ungulate road-kill prognosis. *Animals* 10:1345
- Bonnot NC, Couriot O, Berger A, Cagnacci F, Ciuti S, De Groeve JE, Gehr B, Heurich M, Kjellander P, Kroeschel M, Morellet N, Sonnichsen L, Hewison AJM (2020) Fear of the dark? Contrasting impacts of humans versus lynx on diel activity of roe deer across Europe. *J Anim Ecol* 89:132–145
- Bonnot N, Morellet N, Verheyden H, Cargnelutti B, Lourtet B, Klein F, Hewison AJM (2013) Habitat use under predation risk: hunting, roads and human dwellings influence the spatial behaviour of roe deer. *Eur J Wildl Res* 59:185–193
- Börger L, Franconi N, De Michele G, Gantz A, Meschi F, Manica A, Lovari S, Coulson T (2006) Effects of sampling regime on the mean and variance of home range size estimates. *J Anim Ecol* 75:1393–1405
- Bosch J, Peris S, Fonseca C, Martinez M, De la Torre A, Iglesias I, Muñoz MJ (2012) Distribution, abundance and density of the wild boar on the Iberian Peninsula, based on the CORINE program and hunting statistics. *Folia Zool* 61:138–152
- Bruinderink GG, Hazebroek E (1996) Ungulate traffic collisions in Europe. *Conserv Biol* 10:1059–1067
- Burnham KP, Anderson DR (2002) Model selection and multi-model inference. A practical information-theoretic approach, 2nd edn. Springer, New York
- Cagnacci F, Boitani L, Powell RA, Boyce MS (2010) Animal ecology meets GPS-based radiotelemetry: a perfect storm of opportunities and challenges. *Phil Trans R Soc B* 365:2157–2162
- Calenge C (2011) Home range estimation in R: the adehabitatHR package. Office national de la chasse et de la faune sauvage, Saint Benoist
- Carbillet B, Rey B, Palme R, Morellet N, Bonnot N, Chaval Y, Cargnelutti B, Hewison AJM, Gilot-Fromont E, Verheyden H (2020) Under cover of the night: context-dependency of anthropogenic disturbance on stress levels of wild roe deer *Capreolus capreolus*. *Conserv Physiol* 8(1). <https://doi.org/10.1093/conphys/coaa086>
- De Groeve J, Cagnacci F, Ranc N, Bonnot NC, Gehr B, Heurich M, Hewison AJM, Kroeschel M, Linnell JD, Morellet N, Myrsterud A, Sandfort R, Van De Weghe N (2020) Individual movement-sequence analysis method (IM-SAM): characterizing spatio-temporal patterns of animal habitat use across landscapes. *Int J Geogr Inf Sci* 34:1530–1551
- De Groeve J, Van de Weghe N, Ranc N, Neutens T, Ometto L, Rota-Stabelli O, Cagnacci F (2016) Extracting spatio-temporal patterns in animal trajectories: an ecological application of sequence analysis methods. *Methods Ecol Evol* 7:369–379
- Dodge S, Bohrer G, Weinzierl R, Davidson SC, Kays R, Douglas D, Cruz S, Han J, Brandes D, Wikelski M (2013) The environmental-data automated track annotation (EnvDATA) system: linking animal tracks with environmental data. *Mov Ecol* 1:1–14
- Dupke C, Bonenfant C, Reineking B, Hable R, Zeppenfeld T, Ewald M, Heurich M (2017) Habitat selection by a large herbivore at multiple spatial and temporal scales is primarily governed by food resources. *Ecography* 40:1014–1027
- Ewald M, Dupke C, Heurich M, Müller J, Reineking B (2014) LiDAR remote sensing of forest structure and GPS telemetry data provide insights on winter habitat selection of European roe deer. *Forests* 5:1374–1390
- Falcucci A, Ciucci P, Maiorano L, Gentile L, Boitani L (2009) Assessing habitat quality for conservation using an integrated occurrence-mortality model. *J Appl Ecol* 46:600–609
- FAO, Food and agriculture organisation, forestry department, global forest resource assessment 2020. <http://www.fao.org/forest-resources-assessment/en/>
- Fenton S, Moorcroft PR, Čirović D, Lanszki J, Heltai M, Cagnacci F, Breck S, Bogdanović N, Pantelić I, Ács K, Ranc N (2021) Movement, space-use and resource preferences of European golden jackals in human-dominated landscapes: insights from a telemetry study. *Mamm Biol*. <https://doi.org/10.1007/s42991-021-00109-2>
- Fleming KK, Didier KA, Miranda BR, Porter WF (2004) Sensitivity of a white-tailed deer habitat-suitability index model to error in satellite land-cover data: implications for wild-life habitat-suitability studies. *Wildl Soc Bull* 32:158–168
- Gaillard JM, Duncan P, Delorme D, Van Laere G, Pettorelli N, Maillard D, Renaud G (2003) Effects of hurricane Lothar on the population dynamics of European roe deer. *J Wildl Manage* 67:767–773
- Gehr B, Hofer EJ, Pewsner M, Ryser A, Vimercati E, Vogt K, Keller LF (2018) Hunting-mediated predator facilitation and superadditive mortality in a European ungulate. *Ecol Evol* 8:109–119
- Gorelick N, Hancher M, Dixon M, Ilyushchenko S, Thau D, Moore R (2017) Google earth engine: planetary-scale geospatial analysis for everyone. *Remote Sens Environ* 202:18–27
- De Groeve J (2018) A wildlife journey in space and time: methodological advancements in the assessment and analysis

- of spatio-temporal patterns of animal movement across European landscapes (Doctoral Thesis). Ghent University, 2017–2018, Geography, FIRST
- Handcock R, Swain D, Bishop-Hurley G, Patison K, Wark T, Valencia P, Corke P, O'Neill C (2009) Monitoring animal behaviour and environmental interactions using wireless sensor networks, GPS collars and satellite remote sensing. *Sensors* 9:3586–3603
- Kuenzer C, Ottinger M, Wegmann M, Guo H, Wang C, Zhang J, Dech S, Wikelski M (2014) Earth observation satellite sensors for biodiversity monitoring: potentials and bottlenecks. *Int J Remote Sens* 35:6599–6647
- Lundy MG, Buckley DJ, Boston ES, Scott DD, Prodöhl PA, Marnell F, Teeling EC, Montgomery WI (2012) Behavioural context of multi-scale species distribution models assessed by radio-tracking. *Basic Appl Ecol* 13:188–195
- McGarigal K, Cushman SA, Ene E (2012) FRAGSTATS v4: spatial pattern analysis program for categorical and continuous maps. Computer software program produced by the authors at the University of Massachusetts, Amherst. <http://www.umass.edu/landeco/research/fragstats/fragstats>
- Monmonier M (2018) How to lie with maps. University of Chicago Press, Chicago
- Neumann W, Martinuzzi S, Estes AB, Pidgeon AM, Dettki H, Ericsson G, Radeloff VC (2015) Opportunities for the application of advanced remotely-sensed data in ecological studies of terrestrial animal movement. *Mov Ecol* 3:1–13
- Oeser J, Heurich M, Senf C, Pflugmacher D, Belotti E, Kuemmerle T (2020) Habitat metrics based on multi-temporal Landsat imagery for mapping large mammal habitat. *Remote Sens Ecol Conserv* 6:52–69
- Oeser J, Heurich M, Senf C, Pflugmacher D, Kuemmerle T (2021) Satellite-based habitat monitoring reveals long-term dynamics of deer habitat in response to forest disturbances. *Ecol Appl* 31:e2269
- Padié S, Morellet N, Hewison AJM, Martin JL, Bonnot N, Cargnelutti B, Chamaillé-Jammes S (2015) Roe deer at risk: teasing apart habitat selection and landscape constraints in risk exposure at multiple scales. *Oikos* 124:1536–1546
- Pekkarinen A, Reithmaier L, Strobl P (2009) Pan-European forest/non-forest mapping with Landsat ETM+ and CORINE land cover 2000 data. *ISPRS J Photogramm Remote Sens* 64:171–183
- Peters W, Hebblewhite M, Mysterud A, Eacker D, Hewison AJM, Linnell JD, Focardi S, Urbano F, De Groot J, Gehr B, Heurich M, Jarnemo A, Kjellander P, Kröschel M, Morellet N, Pedrotti L, Reinecke H, Sandfort R, Sönichsen L, Sunde P, Cagnacci F (2019) Large herbivore migration plasticity along environmental gradients in Europe: life-history traits modulate forage effects. *Oikos* 128:416–429
- Pettorelli N, Safi K, Turner W (2014) Satellite remote sensing, biodiversity research and conservation of the future. *Philos Trans R Soc B* 369:1643
- Pettorelli N, Vik JO, Mysterud A, Gaillard JM, Tucker CJ, Stenseth NC (2005) Using the satellite-derived NDVI to assess ecological responses to environmental change. *Trends Ecol Evol* 20:503–510
- Remelgado R, Leutner B, Safi K, Sonnenschein R, Kuebert C, Wegmann M (2018) Linking animal movement and remote sensing—mapping resource suitability from a remote sensing perspective. *Remote Sens Ecol Conserv* 4:211–224
- Rivrud IM, Loe LE, Vik JO, Veiberg V, Langvatn R, Mysterud A (2009) Temporal scales, trade-offs, and functional responses in red deer habitat selection. *Ecology* 90:699–710
- Saura S, Estreguil C, Mouton C, Rodríguez-Freire M (2011) Network analysis to assess landscape connectivity trends: application to European forests (1990–2000). *Ecol Ind* 11:407–416
- Schadt S, Knauer F, Kaczensky P, Revilla E, Wiegand T, Trepl L (2002) Rule-based assessment of suitable habitat and patch connectivity for the Eurasian lynx. *Ecol Appl* 12:1469–1483
- Silva JS, Cstry FX, Moreira F, Lopes T, Forte T, Bugalho MN (2014) Effects of deer on the post-fire recovery of a Mediterranean plant community in Central Portugal. *J for Res* 19:276–284
- Stehman SV (1997) Selecting and interpreting measures of thematic classification accuracy. *Remote Sens Environ* 62(1):77–89
- Thurfjell H, Ciuti S, Boyce MS (2014) Applications of step-selection functions in ecology and conservation. *Mov Ecol* 2:4
- Tufto J, Andersen R, Linnell J (1996) Habitat use and ecological correlates of home range size in a small cervid: the roe deer. *J Anim Ecol* 65:715–724
- Urbano F, Cagnacci F, Euromammals Collaborative Initiative (2021) Data management and sharing for collaborative science: lessons learnt from the euromammals initiative. *Front Ecol Evol*. <https://doi.org/10.3389/fevo.2021.727023>
- Vogt P, Riitters KH, Iwanowski M, Estreguil C, Kozak J, Soille P (2007) Mapping landscape corridors. *Ecol Ind* 7:481–488

Publisher's Note Springer Nature remains neutral with regard to jurisdictional claims in published maps and institutional affiliations.