



**HAL**  
open science

## Extracellular loop 2 of G protein-coupled olfactory receptors is critical for odorant recognition

Yiqun Yu, Zhenjie Ma, Jody Pacalon, Lun Xu, Weihao Li, Christine Belloir, Jeremie Topin, Loïc Briand, Jérôme Golebiowski, Xiaojing Cong

► **To cite this version:**

Yiqun Yu, Zhenjie Ma, Jody Pacalon, Lun Xu, Weihao Li, et al.. Extracellular loop 2 of G protein-coupled olfactory receptors is critical for odorant recognition. *Journal of Biological Chemistry*, 2022, 298 (9), pp.102331. 10.1016/j.jbc.2022.102331 . hal-03749290

**HAL Id: hal-03749290**

**<https://hal.inrae.fr/hal-03749290>**

Submitted on 10 Aug 2022

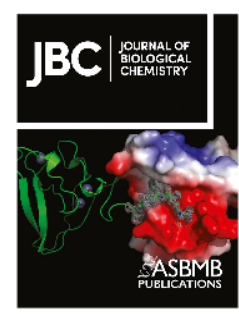
**HAL** is a multi-disciplinary open access archive for the deposit and dissemination of scientific research documents, whether they are published or not. The documents may come from teaching and research institutions in France or abroad, or from public or private research centers.

L'archive ouverte pluridisciplinaire **HAL**, est destinée au dépôt et à la diffusion de documents scientifiques de niveau recherche, publiés ou non, émanant des établissements d'enseignement et de recherche français ou étrangers, des laboratoires publics ou privés.



Distributed under a Creative Commons Attribution 4.0 International License

# Journal Pre-proof



Extracellular loop 2 of G protein-coupled olfactory receptors is critical for odorant recognition

Yiqun Yu, Zhenjie Ma, Jody Pacalon, Lun Xu, Weihao Li, Christine Belloir, Jeremie Topin, Loïc Briand, Jérôme Golebiowski, Xiaojing Cong

PII: S0021-9258(22)00773-6  
DOI: <https://doi.org/10.1016/j.jbc.2022.102331>  
Reference: JBC 102331

To appear in: *Journal of Biological Chemistry*

Received Date: 30 November 2021  
Revised Date: 26 July 2022  
Accepted Date: 27 July 2022

Please cite this article as: Yu Y, Ma Z, Pacalon J, Xu L, Li W, Belloir C, Topin J, Briand L, Golebiowski J, Cong X, Extracellular loop 2 of G protein-coupled olfactory receptors is critical for odorant recognition, *Journal of Biological Chemistry* (2022), doi: <https://doi.org/10.1016/j.jbc.2022.102331>.

This is a PDF file of an article that has undergone enhancements after acceptance, such as the addition of a cover page and metadata, and formatting for readability, but it is not yet the definitive version of record. This version will undergo additional copyediting, typesetting and review before it is published in its final form, but we are providing this version to give early visibility of the article. Please note that, during the production process, errors may be discovered which could affect the content, and all legal disclaimers that apply to the journal pertain.

© 2022 THE AUTHORS. Published by Elsevier Inc on behalf of American Society for Biochemistry and Molecular Biology.

# **Extracellular loop 2 of G protein-coupled olfactory receptors is critical for odorant recognition**

Running title: ECL2 is critical for odorant recognition

*Yiqun Yu<sup>1,2,‡,\*</sup>, Zhenjie Ma<sup>3,‡</sup>, Jody Pacalon<sup>4,‡</sup>, Lun Xu<sup>1</sup>, Weihao Li<sup>1</sup>, Christine Belloir<sup>5</sup>, Jeremie Topin<sup>4</sup>, Loïc Briand<sup>5</sup>, Jérôme Golebiowski<sup>4,6\*</sup>, Xiaojing Cong<sup>7\*</sup>*

<sup>1</sup> Ear, Nose & Throat Institute, Department of Otolaryngology, Eye, Ear, Nose & Throat Hospital, Fudan University, Shanghai 200031, People's Republic of China

<sup>2</sup> Clinical and Research Center for Olfactory Disorders, Eye, Ear, Nose & Throat Hospital, Fudan University, Shanghai 200031, People's Republic of China

<sup>3</sup> School of Life Sciences, Shanghai University, Shanghai 200444, People's Republic of China

<sup>4</sup> Université Côte d'Azur, CNRS, Institut de Chimie de Nice UMR7272, 06108 Nice Cedex 2, France

<sup>5</sup> Centre des Sciences du Goût et de l'Alimentation (CSGA), Université de Bourgogne-Franche Comté, CNRS, INRA, 21000 Dijon, France

<sup>6</sup> Department of Brain and Cognitive Sciences, Daegu Gyeongbuk Institute of Science and Technology, Daegu 711-873, South Korea

<sup>7</sup> Institut de Génomique Fonctionnelle, Université Montpellier, CNRS, INSERM, 34094 Montpellier Cedex 5, France.

‡These authors contributed equally.

\* Correspondence should be addressed to yu\_yiqun@fudan.edu.cn, jerome.golebiowski@gmail.com or xiaojing.cong@igf.cnrs.fr.

## ABSTRACT

G protein-coupled olfactory receptors (ORs) enable us to detect innumerable odorants. They are also ectopically expressed in non-olfactory tissues and emerging as attractive drug targets. ORs can be promiscuous or highly specific, which is part of a larger mechanism for odor discrimination. Here, we demonstrate that the OR extracellular loop 2 (ECL2) plays critical roles in OR promiscuity and specificity. Using site-directed mutagenesis and molecular modeling, we constructed 3D OR models in which ECL2 forms a lid over the orthosteric pocket. We demonstrate using molecular dynamics simulations that ECL2 controls the shape and the volume of the odorant-binding pocket, maintains the pocket hydrophobicity, and acts as a gatekeeper of odorant binding. Therefore, we propose the interplay between the specific orthosteric pocket and the variable, less specific ECL2 controls OR specificity and promiscuity. Furthermore, the 3D models created here enabled virtual screening of new OR agonists and antagonists, which exhibited a 70% hit rate in cell assays. Our approach can potentially be generalized to structure-based ligand screening for other GPCRs that lack high-resolution 3D structures.

## KEYWORDS

Olfactory receptor; molecular modeling; virtual screening; site-directed mutagenesis

## INTRODUCTION



G protein-coupled receptors (GPCRs) are the largest family of membrane proteins in the human genome, comprising over 800 members. Half of the human GPCR genes code for olfactory receptors (ORs) (1), which can discriminate an astonishing number of different odors (2). ORs are also ectopically expressed in non-olfactory tissues, emerging as appealing drug targets (3-8). GPCRs detect diverse ligands and control most of the cell signaling. Despite their diverse functions, GPCRs conserve a seven transmembrane helical architecture (TM1—TM7), connected by 3 extracellular and 3 intracellular loops (ECL1—ECL3 and ICL1—ICL3). ORs belong to class A GPCRs which account for ~85% of the human GPCR genes. The orthosteric ligand-binding pocket in class A GPCRs is located within the extracellular half of the TM bundle, extending ~15 Å deep into the cell membrane (9). The pocket may be solvent accessible (e.g. in receptors for peptides or soluble molecules) or shielded by ECL2 (e.g. in lipid receptors and rhodopsin) (10). ECL2 is often the longest extracellular loop, which is highly variable in length, sequence and structure (11,12). A disulfide bond between ECL2 and TM3 is conserved in 92% of human GPCRs (13). It is important for ligand-binding and receptor activation (10). Peptide-activated GPCRs mostly contain an ECL2 in the form of a  $\beta$ -hairpin lying on the rim of the orthosteric pocket. ECL2 of GPCRs that are modulated by small-molecule endogenous ligands exhibits diverse shapes. They are often unstructured and cover partially or fully the pocket entrance (10). Rhodopsin is a case in-between, in which a  $\beta$ -hairpin shaped ECL2 inserts deep into the orthosteric pocket (14). It has been suggested that rhodopsin ECL2 represents an evolutionary transition between peptide receptors and small molecule receptors (12). In small molecule receptors, ECL2 may have evolved to mimic the peptide ligands and occupy part of the pocket, which renders the pocket suitable for binding small molecules. ECL2 plays important roles in ligand binding and activation of class A



GPCRs (11). It may act as a gateway to the orthosteric pocket (15-19), bind allosteric modulators (20,21) or participate in receptor activation (22,23).

ECL2 of ORs are among the longest in class A GPCRs. ORs can be promiscuous or highly specific, in which ECL2 may play a central role. However, the lack of high-resolution OR structures hampers the study of OR-odorant recognition. Homology modeling combined with site-directed mutagenesis have shed light on the structure and ligand specificity of the orthosteric pocket of various ORs (24-28). Yet, the role and structure of ECL2 remain mostly elusive. In this work, we studied the role of ECL2 in two prototypical mouse ORs of the same subfamily, mOR256-3 and mOR256-8, which share 54% sequence identity. Our previous work indicated that mOR256-3 is promiscuous for a series of commonly encountered odorants, whereas mOR256-8 is rather specific (29). In this study, we found that ECL2 properties strongly modulate OR-odorant recognition. We performed site-directed mutagenesis along ECL2 and built 3D OR models that are in concordance with the mutagenesis data. Virtual screening using the 3D models identified new mOR256-3 ligands, including an antagonist which selectively inhibited some of the agonists. The 3D models provide structural explanations to the promiscuity of mOR256-3 and the selective antagonism.

## RESULTS

### **Sequence analysis of OR ECL2**

Sequence alignment of 1521 human and mouse ORs showed that their ECL2 mostly contain 34-35 amino acids (Fig. S1). They are longer than ECL2 in most class A GPCRs. Three cysteines are highly conserved (C169, C179 and C189 in mOR256-3, conserved in 93.4%, 99.5% and 95.0% of





human and mouse ORs, respectively). While C179 forms the classic disulfide bond with TM3, C169 and C189 have been suggested to form a second disulfide bond within ECL2 (30). A few residues around the two disulfide bonds are highly conserved, whereas the rest of the OR ECL2 sequence displays low conservation (Fig. S1). It is plausible that the two disulfide bonds are important for ECL2 structuring and OR functions.

### **Non-specific roles of ECL2 in OR responses to odorants**

In our previous work, we screened diverse odorants at a near-saturating concentration (300  $\mu$ M) on several ORs in the heterologous Hana3A cells. We found a wide range of potential ligands for mOR256-3 but only two for mOR256-8 (29). Yet, one or few point mutations in mOR256-8 could significantly expand its ligand spectrum (29). Here, we reexamined 20 of these odorants at various concentrations in heterologous cells expressing mOR256-3 or mOR256-8. Ten odorants activated mOR256-3 in a dose-dependent manner, including cyclic and acyclic alcohols, aldehydes, acids, ketones, and esters: R-carvone, coumarin, 1-octanol, allyl phenylacetate, benzyl acetate, citral, geraniol, 2-heptanone, octanal, and octanoic acid (Table S1 and Fig. S2A). mOR256-8 responded only to 1-octanol and geraniol in a dose-response manner, which are two primary acyclic alcohols of similar lengths (Table S1 and Fig. S2B).

Focusing on the role of ECL2, we performed site-directed mutagenesis to probe the residues that are responsible for the functional differences between mOR256-3 and mOR256-8. Based on the 3D models in our previous work (29,31-34), we mutated 14 residues on TM3—TM6 around the orthosteric pocket, as well as 15 residues in ECL2 of mOR256-8 that differ from mOR256-3. In the narrowly-tuned mOR256-8, these residues were mutated one by one into their counterpart in the broadly-tuned mOR256-3. We then tested the response of the mutant receptors to R-carvone



and coumarin, two reference ligands of mOR256-3. While wild-type (wt) mOR256-8 does not respond to these odorants, 14 of the mutants showed dose-dependent responses to R-carvone, and some of them also responded to coumarin (Fig. 1A). Four of the mutations were in ECL2, R173I, N175D, L181V, and L184M) (Fig. 1A). These residues flank the ECL2-TM3 disulfide bond, suggesting that this region (residues 173—184) is important for the receptor function. Five residues in this region are conserved in mOR256-8 and mOR256-3 (H176, F177, E180, P182, and A183). Therefore, we mutated these five residues in mOR256-3, to evaluate their role in this promiscuous receptor. They were mutated into alanine, except for A183 which was mutated into a bulky isoleucine. While F177A impaired receptor expression on the cell surface (Fig. S3), the other four mutations systematically diminished the receptor's response to R-carvone and coumarin (Fig. 1B). The above mutations in the two receptors had less drastic impact on the response to geraniol (Fig. S4), which suggest that geraniol interacts with the receptors in a different manner.

We also generated a chimeric mOR256-8 in which ECL2 was replaced with that of mOR256-3. However, it did not gain response to the ligands of mOR256-3. The above data highlight that residues 173—184 in ECL2 are critical but not solely responsible for ligand recognition or receptor promiscuity. This is in line with the notion that in class A GPCRs, ECL2 acts as a vestibule or a molecular sieve of ligand binding and/or an allosteric site of receptor activation. Since residues 173—184 in ORs surround the conserved ECL2-TM3 disulfide bond, they are likely important in most, if not all, mammalian ORs. For instance, mutations in this region have dramatic impact on the response of mOR-EG to its odorants (28). This region has also been found to interact with the orthosteric ligands in several non-olfactory class A GPCRs (11).

### **3D modeling explains OR promiscuity**



To date, there are no high-resolution OR structures or structural information on the structural fold of OR ECL2. We generated three types of 3D models using AlphaFold 2 (35), Modeller (36), and Swiss-model (37). The three models displayed distinct structures in ECL2 (Fig. 1C and S5). We evaluated the quality of the models using site-directed mutagenesis data and docking. The model that best matched these data was generated by Modeller based on our hand-curated multiple sequence alignment (Fig. S6). In this model, ECL2 appears as an unstructured coil, in which residues 173—184 form a lid of the orthosteric pocket (Fig. 1C). Residues 180—183 may interact directly with the ligands (Fig. 1C). The model also suggests that the pocket of mOR256-3 is much larger than mOR256-8, showing two connected cavities (Fig. 2A). This may allow mOR256-3 to accommodate odorants of diverse size and shape. Molecular docking suggests that the upper cavity can accommodate the cyclic ligands whereas the deeper cavity accommodates the acyclic ones (Fig. 2A and S7). The pocket of mOR256-8 shows only one small cavity for its acyclic ligands. We estimated the pocket volume of all the human and mouse ORs by summing up the side-chain volume of the residues outlining the pocket with or without ECL2. We found that the pocket size of mOR256-3 is ranked in the 47th and the 46th percentile with and without ECL2, respectively, whereas that of mOR256-8 is at the 26th and the 22th, respectively (Fig. S8). Thus, the larger pocket volume of mOR256-3 than mOR256-8 may provide a structural explanation to the promiscuity of the former. In order to assess this hypothesis and the model quality, we use the model to virtually screen for new mOR256-3 ligands by molecular docking.

Docking benchmarks were first performed with 52 compounds, including 10 known ligands of mOR256-3 and 42 decoys (Table S2) (29). An ensemble-docking protocol (Fig. S9) was used to account for the conformational flexibility of the OR. Namely, enhanced sampling molecular dynamics (MD) simulations were performed on the initial model of mOR256-3 to sample the



receptor conformations (see Materials and Methods for details). Twenty receptor conformers (snapshots) were extracted from a clustering analysis of the MD trajectory. The 52 benchmark compounds were docked to each of the 20 conformers using Autodock Vina (38) and ranked by their vina scores for the given conformer. The “best” conformers were chosen as those that could best separate the ligands from the decoys by the vina scores (Fig. S9). We performed this benchmarking process for our in-house model as well as for the models generated by AlphaFold2 and Swiss model. The in-house model—generated by Modeller and selected according to site-directed mutagenesis data—gave the best predictions on the benchmark compounds (Table 1). Removing ECL2 from this model significantly reduced the predictivity (Table 1).

Finally, we chose two best conformers of the above in-house model to virtually screen a library of 80 odorants in our laboratory (Tables S3 and S4). The screening returned 10 candidate compounds (Table S3), which were tested in functional assays in Hana3A cells. Six of them turned out to be mOR256-3 agonists and one (benzaldehyde) was an antagonist, giving 70% hit rate (Fig. 3B-C and Table S3). Benzaldehyde antagonized R-carvone, coumarin and geraniol (Fig. 3C). Docking predicted that that benzaldehyde may bind in the upper cavity of the mOR256-3 pocket for cyclic ligands, similar to R-carvone and coumarin (Fig. 3C).

### **ECL2 controls pocket shape and hydrophobicity**

To further examine the role of ECL2 in odorant recognition, we constructed three mOR256-3 chimeras, by replacing its ECL2 with that of M2 muscarinic receptor,  $\beta_2$  adrenergic receptor and 5HT serotonin 2C receptor, respectively (denoted as ch- $\beta_2$ AR<sup>ECL2</sup>, ch-M<sub>2</sub>R<sup>ECL2</sup> and ch-5HT<sub>2C</sub>R<sup>ECL2</sup>). ECL2 of these receptors exhibit distinct structures (Fig. 3A). In Hana3A cells, the chimeras showed no significant response to the mOR256-3 ligands (Fig. S10). Nevertheless, they





all displayed specific dose-dependent response to trans-cinnamaldehyde (Fig. 3B), while wt mOR256-3 does not respond to this odorant (29). To understand how the chimeric mOR256-3 became specific receptors of trans-cinnamaldehyde, we built homology models for the chimeras and performed all-atom molecular dynamics (MD) simulations in an explicit membrane-water environment. The homology models were built by assuming that ECL2 of the chimeras preserve the same fold as in  $\beta_2$ AR, M<sub>2</sub>R and 5HT<sub>2c</sub>R, respectively. The models illustrated that ECL2 of the chimeras only partly covered the ligand entrance. The orthosteric pocket of the chimeras was hydrated during the MD, while that of wt mOR256-3 was shielded from hydration by ECL2 (Fig. 3A). This might be the reason why the chimeras did not respond to the hydrophobic ligands of mOR256-3. Rather, they responded to the less hydrophobic trans-cinnamaldehyde (Fig. 3C).

We then added trans-cinnamaldehyde in the MD simulations of wt mOR256-3 and the chimeras to monitor the ligand binding. The ligand was initially placed at 10 Å above ECL2 and was restrained within a 15 Å radius around ECL2. Each system underwent 30 independent MD runs of 200 ns. We observed two binding events in ch- $\beta_2$ AR<sup>ECL2</sup>, in which trans-cinnamaldehyde entered the orthosteric pocket near the toggle switch residue Y6.48 (Fig. 3D). It caused the side chain of Y6.48 to flip toward TM5, which is likely an early step of OR activation (32). In the case of wt mOR256-3, ch-M<sub>2</sub>R<sup>ECL2</sup> and ch-5HT<sub>2c</sub>R<sup>ECL2</sup>, trans-cinnamaldehyde associated with ECL2 but could not enter the pocket. The binding pose of trans-cinnamaldehyde in ch- $\beta_2$ AR<sup>ECL2</sup> suggests that wt mOR256-3 cannot accommodate this ligand, since ECL2 occupies part of its pocket (Fig. 3D). Indeed, mOR256-3 ligands are generally smaller or more flexible than trans-cinnamaldehyde. The lack of ligand binding in ch-M<sub>2</sub>R<sup>ECL2</sup> and ch-5HT<sub>2c</sub>R<sup>ECL2</sup> was likely due to insufficient sampling of the ECL2 conformations in these very short simulations. The entrance to the pocket is narrower in the initial models of in ch-M<sub>2</sub>R<sup>ECL2</sup> and ch-5HT<sub>2c</sub>R<sup>ECL2</sup> than that in ch- $\beta_2$ AR<sup>ECL2</sup>.



To verify the binding pose of trans-cinnamaldehyde observed in the MD simulations, we mutated three pocket residues that are in close contact with the ligand. Mutations L<sup>3.33</sup>A and L<sup>5.46</sup>A abolished the receptor response to trans-cinnamaldehyde (Fig. 3D). F<sup>3.32</sup>A impaired the receptor expression on the cell surface (Fig. S3) and is thus not discussed. The results suggest that the recognition of trans-cinnamaldehyde is specific to the orthosteric pocket, whereas ECL2 served as an unspecific molecular sieve for the ligand entrance.

## DISCUSSION

Mammalian OR sequences have highly diversified during evolution to detect and discriminate a vast spectrum of odorants. Specific (or narrowly-tuned) ORs may be responsible for the detection of specific odorants or endogenous ligands when ectopically expressed in non-olfactory tissues (3-6). Promiscuous (or broadly-tuned) ORs may play exert important functions in olfaction, such as expanding the detection spectrum, diversifying the combinatorial code, and acting as general odor detectors or odor intensity analyzers (29). Promiscuous ORs feature mostly non-polar interactions in the orthosteric pocket with odorants, which are more adaptable to different odorant structures (33,39). Here, we showed that ECL2 is indispensable for OR promiscuity. ECL2 acts as a pocket lid to maintain the pocket hydrophobicity and also forms the upper part of the pocket to control its shape and volume. Its structural flexibility and mostly hydrophobic nature may tolerate diverse odorants, resulting in promiscuity. Indeed, in class A GPCRs, ECL2 may change conformations upon ligand binding and adopt different forms for different ligands (11). The evolution of ECL2 in class A GPCRs is strongly coupled to that of the orthosteric pocket (12). Therefore, class A GPCR-ligand recognition relies on the interplay between ECL2 and the orthosteric pocket. ECL2 may also take part in receptor activation via allosteric coupling with the receptor movements on



the intracellular side (11). However, this aspect is beyond the scope of the current study. Note that the 3D models reported here are not to present the exact structural fold of ECL2. Rather, they are to illustrate the approximate position of the ECL2 residues according to the mutagenesis data. Since mOR256-3 ECL2 features mostly non-polar interactions with the odorants, such approximate models serve as suitable structural basis for ligand discovery, as demonstrated by the virtual screening performance. The MD simulations based on these models are insufficient to sample the ECL2 conformational changes upon ligand binding. High-resolution OR structures may enable further investigations on this challenging question. Nevertheless, the models provide an explanation to competitive antagonism, which has been shown to be essential for the perception of odor mixtures (40). Therefore, the models and the virtual screening approach established here may serve the design of biosensors with wide odor detection spectrum, or specific odor maskers and/or drug candidates targeting ectopic ORs in non-olfactory tissues.

## EXPERIMENTAL PROCEDURES

Chemicals and OR constructs. Odorants were purchased from Sigma Aldrich. They were dissolved in DMSO to make stock solutions at 1 mM then diluted freshly in optimal MEM (ThermoFisher) to prepare the odorant stimuli. The OR constructs were kindly provided by Dr. Hiroaki Matsunami (Duke University, Durham, USA). Site-directed mutants were constructed using the Quikchange site-directed mutagenesis kit (Agilent Technologies). The sequences of all plasmid constructs were verified by both forward and reverse sequencing (Sangon Biotech, Shanghai, China).

Chimera Construction. All chimeras were constructed by three PCR steps with modification (41). Briefly, two fragments were amplified from the mOR256-3 while ECL2 of  $\beta_2$ AR, M<sub>2</sub>R and



5HT<sub>2c</sub>R was synthesized by Sangon Biotech Co. (Shanghai, China). The primers were partially complementary at their 5' ends to the adjacent fragments, necessary to fuse the different fragments together. Three fragments were purified and fused together in a second PCR step. Equal amount of each fragment was mixed with dNTP and Phusion® High-Fidelity DNA Polymerase (NEB) in the absence of primers. The PCR program consisted of 10 repetitive cycles with a denaturation step at 98 °C for 10 s, an annealing step at 55 °C for 30 s and an elongation step for 30 s at 72 °C. The third step corresponded to the PCR amplification of the fusion product using the primers of mOR256-3. The PCR product was purified and ligated into PCI vector. The sequences of all chimeras were verified by both forward and reverse sequencing.

Cell culture and transfection. We used Hana3A cells, a HEK293T-derived cell line that stably expresses receptor-transporting proteins (RTP1L and RTP2), receptor expression-enhancing protein 1 (REEP1) and olfactory G protein ( $G\alpha_{olf}$ ) (42). The cells were grown in MEM (Corning) supplemented with 10% (vol/vol) fetal bovine serum (FBS; ThermoFisher) plus 100 µg/ml penicillin-streptomycin (ThermoFisher), 1.25 µg/ml amphotericin (Sigma Aldrich), and 1 µg/ml puromycin (Sigma Aldrich).

All constructs were transfected into the cells using Lipofectamine 2000 (ThermoFisher). Before the transfection, the cells were plated on 96-well plates (NEST) and incubated overnight in MEM with 10% FBS at 37 °C and 5% CO<sub>2</sub>. For each 96-well plate, 2.4 µg of pRL-SV40, 2.4 µg of CRE-Luc, 2.4 µg of mouse RTP1S, and 12 µg of receptor plasmid DNA were transfected. The cells were subjected to a luciferase assay 24 hours after transfection.

Luciferase assay. The luciferase assay was performed with the Dual-Glo Luciferase Assay Kit (Promega) following the protocol in ref. (42). OR activation triggers the  $G\alpha_{olf}$ -driven AC-cAMP-





PKA signaling cascade and phosphorylates CREB. Activated CREB induces luciferase gene expression, which can be quantified luminometrically (measured here with a bioluminescence plate reader (MD SPECTRAMAX L)). Cells were co-transfected with firefly and *Renilla* luciferases where firefly luciferase served as the cAMP reporter. *Renilla* luciferase is driven by a constitutively active simian virus 40 (SV40) promoter (pRL-SV40; Promega), which served as a control for cell viability and transfection efficiency. The ratio between firefly luciferase versus *Renilla* luciferase was measured. Normalized OR activity was calculated as  $(L_N - L_{\min}) / (L_{\max} - L_{\min})$ , where  $L_N$  is the luminescence in response to the odorant, and  $L_{\min}$  and  $L_{\max}$  are the minimum and maximum luminescence values on a plate, respectively. The assay was carried out as follows: 24h after transfection, medium was replaced with 100  $\mu$ l of odorant solution (at different doses) diluted in Optimal MEM (ThermoFisher), and cells were further incubated for 4 h at 37 °C and 5% CO<sub>2</sub>. After incubation in lysis buffer for 15 minutes, 20  $\mu$ l of Dual-Glo™ Luciferase Reagent was added to each well of 96-well plate and firefly luciferase luminescence was measured. Next, 20  $\mu$ l Stop-Glo Luciferase Reagent was added to each well and *Renilla* luciferase luminescence was measured. Data analysis followed the published procedure in ref. (42). Three-parameter dose-response curves were fitted with GraphPad Prism 9.

Flow cytometry analysis. Hana3A cells were seeded in 35mm dishes. The cells were cultured overnight to >80% confluence and transfected with 0.3 $\mu$ g RTP1S, 0.3 $\mu$ g GFP, and 0.8 $\mu$ g OR plasmid by Lipofectamine 2000. At 24 h after transfection, the cells were stripped with TrypLE™ Express Enzyme (ThermoFisher) and then kept in round bottom polystyrene tubes on ice. The cells were spun down at 200 g for 3min at 4°C and resuspended in PBS containing 2% FBS and 15mM NaN<sub>3</sub>. They were incubated with primary antibody mouse anti-rhodopsin for 45 min and then with phycoerythrin (PE)-conjugated donkey anti-mouse IgG (Jackson ImmunoResearch, #715-116-



150) in the dark for 30 min on ice. After washing twice, the cells were analyzed using Beckman Coulter CytoFLEX with gating for GFP positive, single, viable cells. The measured PE fluorescence intensities were analyzed and visualized using Flowjo V10. The PE fluorescence intensity was normalized to the average value of wide type ORs for statistical analysis.

Molecular modeling. The in-house models of mOR256-3 and mOR256-8 were generated with Modeller 9.21 (36) using our hand curated sequence alignment to four structure templates: human a2AR (pdb 2YDV), human CXCR1 (pdb 2LNL), human CXCR4 (pdb 3ODU) and bovin rhodospin (pdb 1U19). The N- and C-termini were excluded. The template structures are all in inactive state. The sequence similarity between the templates and the two target ORs ranged from 31% to 38%. In the TM regions, the sequence similarity was 38%–44%. For the 3 chimeras, the ECL2 structure of  $\beta_2$ AR (pdb 2RH1), M<sub>2</sub>R (pdb 3UON) and 5HT<sub>2c</sub>R (pdb 6BQH), respectively, was used as templates for the ECL2. For each receptor, 2500 models were generated and ranked by the DOPE score (43). The 250 top ranked models were selected and clustered using the k-means algorithm. We obtained 5 clusters for each receptor and selected a representative model that was the most compatible with the mutagenesis data. The swiss models were generated using the Swiss-model webservice (37) and the target OR sequence. Template search and model building were performed using default settings of the webservice. The AlphaFold 2 models (35) were generated using the API hosted at the Söding Lab based on the MMseqs2 server (44). Using the target OR sequence as input, the models were generated using the parameters from ref. (35). Docking was performed with Autodock Vina (38). The receptors were prepared with AutodockTools to add nonpolar hydrogens and Gasteiger charges. A grid box was set to encompass the pocket and the lid, with a 0.375 Å grid point spacing. Initial 3D coordinates of the ligands were generated using Balloon (45) and converted by Autodock Raccoon for the docking (46). Pocket residues and ligand



rotatable bonds were set flexible. For virtual screening, however, pocket residues were kept rigid and multiple receptor conformers were used. Other parameters for the docking were left as their default values.

MD simulations. The receptor N- and C- termini were truncated at residues 23 and 305, respectively. Protonation state of titrable residues in the receptors were predicted at pH 7 using the H++ server (47). The receptors or receptor-odorant complexes were embedded in a bilayer of POPC using PACKMOL-Memgen (48). Each system was solvated in a periodic  $75 \times 75 \times 105 \text{ \AA}^3$  box of explicit water and neutralized with 0.15 M of  $\text{Na}^+$  and  $\text{Cl}^-$  ions. Effective point charges of the ligands were obtained by RESP fitting (49) of the electrostatic potentials calculated with the HF/6-31G\* basis set using Gaussian 09 (50). The Amber 14SB (51), lipid 14 (52) and GAFF (53) force fields were used for the proteins, the lipids and the ligands, respectively. The TIP3P model (54) and the Joung-Cheatham parameters (55) were used for the water and the ions, respectively.

The process of ligand binding was simulated with 30 runs of 200 ns of all-atom brute-force MD for each OR-ligand pair using Amber18. The ligand was initially placed 10 Å above ECL2. After energy minimization, each system was gradually heated to 310 K with a restraint of 200 kcal/mol on the receptor and the ligand. This was followed by 5 ns of pre-equilibration with a restraint of 5 kcal/mol, and 5 ns of unrestrained equilibration. Bonds involving hydrogen atoms were constrained using the SHAKE algorithm (56), allowing for a 2-fs time step. Van der Waals and short-range electrostatic interactions were cut off at 12 Å. Long-range electrostatic interactions were computed using Particle Mesh Ewald (57) method with a Fourier grid spacing of 1.2 Å. During the production run, when the ligand exceeded 15 Å from the center of ECL2, a distance restraint of 10 kcal/mol was applied to drive the ligand toward the center. Finally, the trajectories were visualized with VMD 1.9.2 to inspect the binding events.



To thoroughly sample the conformations of mOR256-3 for ensemble docking, we used an enhanced sampling technique, replica exchange with solute scaling (REST2) (58). REST2 MD was performed with 48 replicas in the *NVT* ensemble using Gromacs 5.1 (59) patched with the PLUMED 2.3 plugin (60). The protein and the ligands were considered as “solute” in the REST2 scheme. The force constants van der Waals, electrostatic and dihedral terms of the protein and the ligands were scaled down to facilitate conformational changes. The effective temperatures used for generating the REST2 scaling factors ranged from 310 K to 700 K, following a distribution calculated with the Patriksson-van der Spoel approach (61). Exchange between replicas was attempted every 1000 simulation steps. This setup resulted in an average exchange probability of ~40%. A total of 60 ns  $\times$  48 replicas of REST2 MD was carried out. The first 10 ns were discarded for equilibration and only the original unscaled replica (at 310 K effective temperature) was collected. The Gromacs clustering tool was used to analyze the simulation trajectory. An RMSD-based clustering was performed on the C $\alpha$  atoms using the Gromos method (62) and a 1 Å cutoff. The representative frames of the top 20 clusters (covering 97% of the trajectory) were extracted for ensemble-docking.

### **Data Availability**

All data generated or analyzed during this study are included in this published article and its supplementary information files.

### **Supporting Information**

This article contains supporting information including Tables S1—S4 and Figs. S1—S10. MD simulations trajectories of mOR256-3 and trans-cinnamaldehyde binding to ch- $\beta_2$ AR<sup>ECL2</sup> are





available at: <https://mycore.core-cloud.net/index.php/s/MkGBt36XDBbMeGz>. Only the protein and the ligand are shown for clarity.

### **Author Contributions**

YY, ZM, LX, WL and CB performed the *in vitro* experiments; YY, CB, LB and XC analyzed the *in vitro* data; JP and XC performed the *in silico* modeling; JP, JT, XC and JG analyzed the *in silico* data; JT contributed to the research design; XC, YY and JG designed the research and wrote the paper.

### **Funding**

This work was supported by the National Natural Science Foundation of China (grants 32070996 and 31771155 to YY), the NeuroMod Institute of the University of Côte d'Azur (2019-2020 project grant to XC and JG), the Roudnitska Foundation in France (2018-2021 research fellowship to JP), GIRACT in Switzerland (2019 research fellowship to JP), the Science and Technology Commission of Shanghai Municipality (grant 21140900600 to YY), and the Eye, Ear, Nose and Throat Hospital, Fudan University, Excellent Doctors-Excellent Clinical Researchers Program (SYB202002 to YY).

### **Conflict of Interest**

The authors declare that they have no conflicts of interest with the contents of this article.

### **ABBREVIATIONS**

OR, olfactory receptor; ECL2, extracellular loop 2; GPCR, G protein-coupled receptor; TM, transmembrane helix; wt, wild-type; CD, circular dichroism; MD, molecular dynamics; mOR,



mouse olfactory receptor; ch- $\beta_2$ AR<sup>ECL2</sup>, chimeric mOR256-3 with ECL2 from the  $\beta_2$  adrenergic receptor; ch-M<sub>2</sub>R<sup>ECL2</sup>, chimeric mOR256-3 with ECL2 from the M<sub>2</sub> muscarinic receptor; ch-5HT<sub>2C</sub>R<sup>ECL2</sup>, chimeric mOR256-3 with ECL2 from the 5HT serotonin 2C receptor; RTP, receptor-transporting protein; REEP1, receptor expression-enhancing protein 1; G $\alpha_{olf}$ , olfactory G proteins; REST2, replica exchange with solute scaling; TFE, trifluoroethanol.

## REFERENCES

1. Malnic, B., Godfrey, P. A., and Buck, L. B. (2004) The human olfactory receptor gene family. *Proc Natl Acad Sci U S A* **101**, 2584-2589
2. Bushdid, C., Magnasco, M. O., Vosshall, L. B., and Keller, A. (2014) Humans can discriminate more than 1 trillion olfactory stimuli. *Science* **343**, 1370-1372
3. Ferrer, I., Garcia-Esparcia, P., Carmona, M., Carro, E., Aronica, E., Kovacs, G. G., Grison, A., and Gustincich, S. (2016) Olfactory receptors in non-chemosensory organs: the nervous system in health and disease. *Frontiers in Aging Neuroscience* **8**
4. Kang, N., and Koo, J. (2012) Olfactory receptors in non-chemosensory tissues. *BMB reports* **45**, 612-622
5. Kang, N., Kim, H., Jae, Y., Lee, N., Ku, C. R., Margolis, F., Lee, E. J., Bahk, Y. Y., Kim, M. S., and Koo, J. (2015) Olfactory marker protein expression is an indicator of olfactory receptor-associated events in non-olfactory tissues. *PloS one* **10**, e0116097
6. Lee, S. J., Depoortere, I., and Hatt, H. (2019) Therapeutic potential of ectopic olfactory and taste receptors. *Nat Rev Drug Discov* **18**, 116-138
7. Li, E., Shan, H., Chen, L., Long, A., Zhang, Y., Liu, Y., Jia, L., Wei, F., Han, J., Li, T., Liu, X., Deng, H., and Wang, Y. (2019) OLFR734 Mediates Glucose Metabolism as a Receptor of Asprosin. *Cell Metab* **30**, 319-328 e318
8. Shepard, B. D., Koepsell, H., and Pluznick, J. L. (2019) Renal olfactory receptor 1393 contributes to the progression of type 2 diabetes in a diet-induced obesity model. *Am J Physiol Renal Physiol* **316**, F372-F381
9. Venkatakrishnan, A. J., Deupi, X., Lebon, G., Tate, C. G., Schertler, G. F., and Babu, M. M. (2013) Molecular signatures of G-protein-coupled receptors. *Nature* **494**, 185-194
10. Woolley, M. J., and Conner, A. C. (2017) Understanding the common themes and diverse roles of the second extracellular loop (ECL2) of the GPCR super-family. *Mol Cell Endocrinol* **449**, 3-11
11. Wheatley, M., Wootten, D., Conner, M. T., Simms, J., Kendrick, R., Logan, R. T., Poyner, D. R., and Barwell, J. (2012) Lifting the lid on GPCRs: the role of extracellular loops. *Br J Pharmacol* **165**, 1688-1703
12. Wolf, S., and Grunewald, S. (2015) Sequence, structure and ligand binding evolution of rhodopsin-like G protein-coupled receptors: a crystal structure-based phylogenetic analysis. *PloS one* **10**, e0123533
13. Karnik, S. S., Gogonea, C., Patil, S., Saad, Y., and Takezako, T. (2003) Activation of G-protein-coupled receptors: a common molecular mechanism. *Trends Endocrinol Metab* **14**, 431-437



14. Palczewski, K., Kumasaka, T., Hori, T., Behnke, C. A., Motoshima, H., Fox, B. A., Le Trong, I., Teller, D. C., Okada, T., Stenkamp, R. E., Yamamoto, M., and Miyano, M. (2000) Crystal structure of rhodopsin: A G protein-coupled receptor. *Science* **289**, 739-745
15. Dror, R. O., Pan, A. C., Arlow, D. H., Borhani, D. W., Maragakis, P., Shan, Y., Xu, H., and Shaw, D. E. (2011) Pathway and mechanism of drug binding to G-protein-coupled receptors. *Proc Natl Acad Sci U S A* **108**, 13118-13123
16. Yuan, S., Chan, H. C., Vogel, H., Filipek, S., Stevens, R. C., and Palczewski, K. (2016) The Molecular Mechanism of P2Y1 Receptor Activation. *Angew Chem Int Ed Engl* **55**, 10331-10335
17. Sandal, M., Behrens, M., Brockhoff, A., Musiani, F., Giorgetti, A., Carloni, P., and Meyerhof, W. (2015) Evidence for a Transient Additional Ligand Binding Site in the TAS2R46 Bitter Taste Receptor. *J Chem Theory Comput* **11**, 4439-4449
18. Sharma, K., Balfanz, S., Baumann, A., and Korsching, S. (2018) Full rescue of an inactive olfactory receptor mutant by elimination of an allosteric ligand-gating site. *Sci Rep* **8**, 9631
19. Bushdid, C., de March, C. A., Topin, J., Do, M., Matsunami, H., and Golebiowski, J. (2019) Mammalian class I odorant receptors exhibit a conserved vestibular-binding pocket. *Cell Mol Life Sci* **76**, 995-1004
20. Bock, A., Merten, N., Schrage, R., Dallanoce, C., Batz, J., Klockner, J., Schmitz, J., Matera, C., Simon, K., Kebig, A., Peters, L., Muller, A., Schrobang-Ley, J., Trankle, C., Hoffmann, C., De Amici, M., Holzgrabe, U., Kostenis, E., and Mohr, K. (2012) The allosteric vestibule of a seven transmembrane helical receptor controls G-protein coupling. *Nat Commun* **3**, 1044
21. Thal, D. M., Glukhova, A., Sexton, P. M., and Christopoulos, A. (2018) Structural insights into G-protein-coupled receptor allostery. *Nature* **559**, 45-53
22. Xu, J., Hu, Y., Kaindl, J., Risel, P., Hubner, H., Maeda, S., Niu, X., Li, H., Gmeiner, P., Jin, C., and Kobilka, B. K. (2019) Conformational Complexity and Dynamics in a Muscarinic Receptor Revealed by NMR Spectroscopy. *Mol Cell* **75**, 53-65 e57
23. Kruse, A. C., Ring, A. M., Manglik, A., Hu, J., Hu, K., Eitel, K., Hubner, H., Pardon, E., Valant, C., Sexton, P. M., Christopoulos, A., Felder, C. C., Gmeiner, P., Steyaert, J., Weis, W. I., Garcia, K. C., Wess, J., and Kobilka, B. K. (2013) Activation and allosteric modulation of a muscarinic acetylcholine receptor. *Nature* **504**, 101-106
24. Yuan, S., Dahoun, T., Brugarolas, M., Pick, H., Filipek, S., and Vogel, H. (2019) Computational modeling of the olfactory receptor Olfr73 suggests a molecular basis for low potency of olfactory receptor-activating compounds. *Commun Biol* **2**, 141
25. Gelis, L., Wolf, S., Hatt, H., Neuhaus, E. M., and Gerwert, K. (2012) Prediction of a ligand-binding niche within a human olfactory receptor by combining site-directed mutagenesis with dynamic homology modeling. *Angew Chem Int Ed Engl* **51**, 1274-1278
26. Geithe, C., Protze, J., Kreuchwig, F., Krause, G., and Krautwurst, D. (2017) Structural determinants of a conserved enantiomer-selective carvone binding pocket in the human odorant receptor OR1A1. *Cell Mol Life Sci* **74**, 4209-4229
27. Abaffy, T., Malhotra, A., and Luetje, C. W. (2007) The molecular basis for ligand specificity in a mouse olfactory receptor: a network of functionally important residues. *J Biol Chem* **282**, 1216-1224
28. Baud, O., Etter, S., Spreafico, M., Bordoli, L., Schwede, T., Vogel, H., and Pick, H. (2011) The mouse eugenol odorant receptor: structural and functional plasticity of a broadly tuned odorant binding pocket. *Biochemistry* **50**, 843-853





29. Yu, Y., de March, C. A., Ni, M. J., Adipietro, K. A., Golebiowski, J., Matsunami, H., and Ma, M. (2015) Responsiveness of G protein-coupled odorant receptors is partially attributed to the activation mechanism. *Proc Natl Acad Sci U S A* **112**, 14966-14971
30. Cook, B. L., Steuerwald, D., Kaiser, L., Graveland-Bikker, J., Vanberghem, M., Berke, A. P., Herlihy, K., Pick, H., Vogel, H., and Zhang, S. (2009) Large-scale production and study of a synthetic G protein-coupled receptor: human olfactory receptor 17-4. *Proc Natl Acad Sci U S A* **106**, 11925-11930
31. de March, C. A., Kim, S. K., Antonczak, S., Goddard, W. A., 3rd, and Golebiowski, J. (2015) G protein-coupled odorant receptors: From sequence to structure. *Protein Sci* **24**, 1543-1548
32. de March, C. A., Yu, Y., Ni, M. J., Adipietro, K. A., Matsunami, H., Ma, M., and Golebiowski, J. (2015) Conserved Residues Control Activation of Mammalian G Protein-Coupled Odorant Receptors. *J Am Chem Soc* **137**, 8611-8616
33. Charlier, L., Topin, J., Ronin, C., Kim, S. K., Goddard, W. A., 3rd, Efremov, R., and Golebiowski, J. (2012) How broadly tuned olfactory receptors equally recognize their agonists. Human OR1G1 as a test case. *Cell Mol Life Sci* **69**, 4205-4213
34. Cong, X., Ren, W., Pacalon, J., Xu, R., Xu, L., Li, X., de March, C. A., Matsunami, H., Yu, H., Yu, Y., and Golebiowski, J. (2022) Large-Scale G Protein-Coupled Olfactory Receptor-Ligand Pairing. *ACS Cent Sci* **8**, 379-387
35. Jumper, J., Evans, R., Pritzel, A., Green, T., Figurnov, M., Ronneberger, O., Tunyasuvunakool, K., Bates, R., Zidek, A., Potapenko, A., Bridgland, A., Meyer, C., Kohl, S. A. A., Ballard, A. J., Cowie, A., Romera-Paredes, B., Nikolov, S., Jain, R., Adler, J., Back, T., Petersen, S., Reiman, D., Clancy, E., Zielinski, M., Steinegger, M., Pacholska, M., Berghammer, T., Bodenstein, S., Silver, D., Vinyals, O., Senior, A. W., Kavukcuoglu, K., Kohli, P., and Hassabis, D. (2021) Highly accurate protein structure prediction with AlphaFold. *Nature*
36. Sali, A., and Blundell, T. L. (1993) Comparative protein modelling by satisfaction of spatial restraints. *J Mol Biol* **234**, 779-815
37. Waterhouse, A., Bertoni, M., Bienert, S., Studer, G., Tauriello, G., Gumienny, R., Heer, F. T., de Beer, T. A. P., Rempfer, C., Bordoli, L., Lepore, R., and Schwede, T. (2018) SWISS-MODEL: homology modelling of protein structures and complexes. *Nucleic Acids Res* **46**, W296-W303
38. Trott, O., and Olson, A. J. (2010) AutoDock Vina: improving the speed and accuracy of docking with a new scoring function, efficient optimization, and multithreading. *J Comput Chem* **31**, 455-461
39. Katada, S., Hirokawa, T., Oka, Y., Suwa, M., and Touhara, K. (2005) Structural basis for a broad but selective ligand spectrum of a mouse olfactory receptor: mapping the odorant-binding site. *J Neurosci* **25**, 1806-1815
40. Reddy, G., Zak, J. D., Vergassola, M., and Murthy, V. N. (2018) Antagonism in olfactory receptor neurons and its implications for the perception of odor mixtures. *Elife* **7**
41. Wurch, T., Lestienne, F., and Pauwels, P. J. (1998) A modified overlap extension PCR method to create chimeric genes in the absence of restriction enzymes. *Biotechnol Tech* **12**, 653-657
42. Zhuang, H., and Matsunami, H. (2008) Evaluating cell-surface expression and measuring activation of mammalian odorant receptors in heterologous cells. *Nat Protoc* **3**, 1402-1413





43. Shen, M. Y., and Sali, A. (2006) Statistical potential for assessment and prediction of protein structures. *Protein Sci* **15**, 2507-2524
44. Mirdita, M., Steinegger, M., and Soding, J. (2019) MMseqs2 desktop and local web server app for fast, interactive sequence searches. *Bioinformatics* **35**, 2856-2858
45. Vainio, M. J., and Johnson, M. S. (2007) Generating conformer ensembles using a multiobjective genetic algorithm. *J Chem Inf Model* **47**, 2462-2474
46. Forli, S., Huey, R., Pique, M. E., Sanner, M. F., Goodsell, D. S., and Olson, A. J. (2016) Computational protein-ligand docking and virtual drug screening with the AutoDock suite. *Nat Protoc* **11**, 905-919
47. Gordon, J. C., Myers, J. B., Folta, T., Shoja, V., Heath, L. S., and Onufriev, A. (2005) H++: a server for estimating pKas and adding missing hydrogens to macromolecules. *Nucleic Acids Res* **33**, W368-371
48. Schott-Verdugo, S., and Gohlke, H. (2019) PACKMOL-Memgen: A Simple-To-Use, Generalized Workflow for Membrane-Protein-Lipid-Bilayer System Building. *J Chem Inf Model* **59**, 2522-2528
49. Wang, J. M., Cieplak, P., and Kollman, P. A. (2000) How well does a restrained electrostatic potential (RESP) model perform in calculating conformational energies of organic and biological molecules? *J Comput Chem* **21**, 1049-1074
50. Frisch, M. J., Trucks, G. W., Schlegel, H. B., Scuseria, G. E., Robb, M. A., Cheeseman, J. R., Scalmani, G., Barone, V., Mennucci, B., Petersson, G. A., Nakatsuji, H., Caricato, M., Li, X., Hratchian, H. P., Izmaylov, A. F., Bloino, J., Zheng, G., Sonnenberg, J. L., Hada, M., Ehara, M., Toyota, K., Fukuda, R., Hasegawa, J., Ishida, M., Nakajima, T., Honda, Y., Kitao, O., Nakai, H., Vreven, T., Montgomery, J. A., Peralta, J. E., Ogliaro, F., Bearpark, M., Heyd, J. J., Brothers, E., Kudin, K. N., Staroverov, V. N., Kobayashi, R., Normand, J., Raghavachari, K., Rendell, A., Burant, J. C., Iyengar, S. S., Tomasi, J., Cossi, M., Rega, N., Millam, J. M., Klene, M., Knox, J. E., Cross, J. B., Bakken, V., Adamo, C., Jaramillo, J., Gomperts, R., Stratmann, R. E., Yazyev, O., Austin, A. J., Cammi, R., Pomelli, C., Ochterski, J. W., Martin, R. L., Morokuma, K., Zakrzewski, V. G., Voth, G. A., Salvador, P., Dannenberg, J. J., Dapprich, S., Daniels, A. D., Farkas, Foresman, J. B., Ortiz, J. V., Cioslowski, J., and Fox, D. J. (2009) Gaussian 09, Revision A.02. Wallingford CT
51. Lindorff-Larsen, K., Piana, S., Palmo, K., Maragakis, P., Klepeis, J. L., Dror, R. O., and Shaw, D. E. (2010) Improved side-chain torsion potentials for the Amber ff99SB protein force field. *Proteins* **78**, 1950-1958
52. Dickson, C. J., Madej, B. D., Skjevik, A. A., Betz, R. M., Teigen, K., Gould, I. R., and Walker, R. C. (2014) Lipid14: The Amber Lipid Force Field. *J Chem Theory Comput* **10**, 865-879
53. Wang, J. M., Wolf, R. M., Caldwell, J. W., Kollman, P. A., and Case, D. A. (2004) Development and testing of a general amber force field. *J Comput Chem* **25**, 1157-1174
54. Jorgensen, W. L., Chandrasekhar, J., Madura, J. D., Impey, R. W., and Klein, M. L. (1983) Comparison of Simple Potential Functions for Simulating Liquid Water. *J Chem Phys* **79**, 926-935
55. Joung, I. S., and Cheatham, T. E. (2008) Determination of alkali and halide monovalent ion parameters for use in explicitly solvated biomolecular simulations. *J Phys Chem B* **112**, 9020-9041



56. Ryckaert, J.-P., Ciccotti, G., and Berendsen, H. J. C. (1977) Numerical integration of the cartesian equations of motion of a system with constraints: molecular dynamics of n-alkanes. *J Comput Phys* **23**, 327-341
57. Darden, T., Perera, L., Li, L. P., and Pedersen, L. (1999) New tricks for modelers from the crystallography toolkit: the particle mesh Ewald algorithm and its use in nucleic acid simulations. *Struct Fold Des* **7**, R55-R60
58. Wang, L., Friesner, R. A., and Berne, B. J. (2011) Replica exchange with solute scaling: a more efficient version of replica exchange with solute tempering (REST2). *The journal of physical chemistry. B* **115**, 9431-9438
59. Van Der Spoel, D., Lindahl, E., Hess, B., Groenhof, G., Mark, A. E., and Berendsen, H. J. (2005) GROMACS: fast, flexible, and free. *J. Comput. Chem.* **26**, 1701-1718
60. Tribello, G. A., Bonomi, M., Branduardi, D., Camilloni, C., and Bussi, G. (2014) PLUMED 2: New feathers for an old bird. *Computer Physics Communications* **185**, 604-613
61. Patriksson, A., and van der Spoel, D. (2008) A temperature predictor for parallel tempering simulations. *Phys. Chem. Chem. Phys.* **10**, 2073-2077
62. Daura, X., Gademann, K., Jaun, B., Seebach, D., van Gunsteren, W. F., and Mark, A. E. (1999) Peptide Folding: When Simulation Meets Experiment. *Angewandte Chemie International Edition* **38**, 236-240
63. Matthews, B. W. (1975) Comparison of the predicted and observed secondary structure of T4 phage lysozyme. *Biochimica et Biophysica Acta (BBA) - Protein Structure* **405**, 442-451



## Figure legends

**Figure 1.** Site-directed mutagenesis and location of the mutation sites. Mutations in **(A)** mOR256-8 pocket and ECL2 and **(B)** mOR256-3 ECL2 affected the response to various odorants. Data are mean  $\pm$  SEM of 3 independent experiments. **(C)** Homology model of mOR256-3 selected according to the data in A-B. **(D)** Consensus ECL2 sequence of human and mouse ORs and location of the mutation sites. Effective mutations are colored in pink (in the pocket) or red (in ECL2). Non-effective mutations are colored in blue, including V99<sup>3.27</sup>A, V110<sup>3.38</sup>T, L198<sup>5.38</sup>E, S254<sup>6.50</sup>T, R172<sup>ECL2</sup>N, I174<sup>ECL2</sup>L, L178<sup>ECL2</sup>F, I185<sup>ECL2</sup>L, M187<sup>ECL2</sup>L, V190<sup>ECL2</sup>T, A192<sup>ECL2</sup>T, and V195<sup>ECL2</sup>N in mOR256-8. In the 3D models, consistently, the non-effective mutation sites (blue) do not constitute the ligand binding site or the pathway to the binding site.

**Figure 2.** Selected 3D models and new mOR256-3 ligands discovered by virtual screening. **(A)** Cross section of the best model of mOR256-3 and mOR256-8, illustrating ECL2 as the pocket lid. mOR256-3 displays two connected cavities in the pocket, in which the upper cavity binds cyclic ligands and the lower one accommodates acyclic molecules. **(B)** Dose-dependent curves of new mOR256-3 agonists from virtual screening. **(C)** Benzaldehyde binds in the same cavity as R-carvone and coumarin. It inhibits R-carvone, coumarin and geraniol. Data are mean  $\pm$  SEM of 3 independent experiments.

**Figure 3.** Structure models and functional assays of mOR256-3 chimeras. **(A)** Homology models of mOR256-3 variants with different ECL2 sequences and structures (in cartoon presentation, colored by secondary structure). **(B)** The pocket of the chimeras was hydrated during MD simulations without ligand in the pocket, whereas that of wt mOR256-3 remained dehydrated



during the same simulation course. Shown here is the final MD simulation frame in cross-section. The water molecules within the pocket are shown in red balls and the surface of ECL2 is in orange. (C) Dose-dependent responses of the three chimeras to trans-cinnamaldehyde. (D) Trans-cinnamaldehyde entered the pocket of  $\beta_2\text{AR}^{\text{ECL2}}$  via the ECL2-TM7 gap during MD simulations. It adopted a binding pose that interacts with the toggle switch Y<sup>6.48</sup>. Mutating the trans-cinnamaldehyde-binding residues L<sup>3.33</sup> and L<sup>5.46</sup> diminished the receptor response to this ligand. An overlay with wt mOR256-3 (orange) shows a steric clash of trans-cinnamaldehyde with ECL2, which is likely the reason why wt mOR256-3 does not respond to this odorant. Data are mean  $\pm$  SEM of 3 independent experiments.





**Table 1.** Docking benchmark using different 3D models of mOR256-3 and 52 compounds.

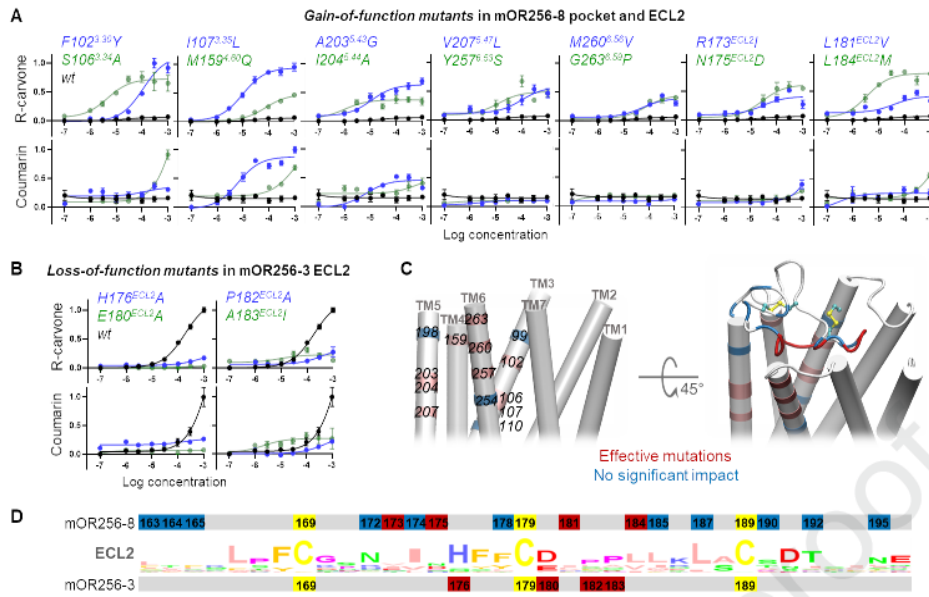
Model	MD snapshot <sup>a</sup>	MCC	Hit rate <sup>b</sup> (precision)	Recall <sup>c</sup>	True positive	True negative	False positive	False negative
In-house model	1	0.50	0.60	0.60	6	38	4	4
In-house model	2	0.26	0.40	0.40	4	36	6	6
In-house model without ECL2	1	0.26	0.40	0.40	4	36	6	6
In-house model without ECL2	2	0.13	0.30	0.30	3	35	7	7
Swiss model	1	0.23	0.36	0.40	4	35	7	6
Swiss model	2	0.20	0.33	0.40	4	34	8	6
AlphaFold2	1	0.38	0.50	0.50	5	37	5	5
AlphaFold2	2	0.26	0.40	0.40	4	36	6	6

<sup>a</sup> Two snapshots that gave the best Matthew's correlation coefficient (MCC) as a statistical measure of the model's predictivity (63). MCC returns a value between -1 (total disagreement between prediction and observation) and +1 (perfect prediction).

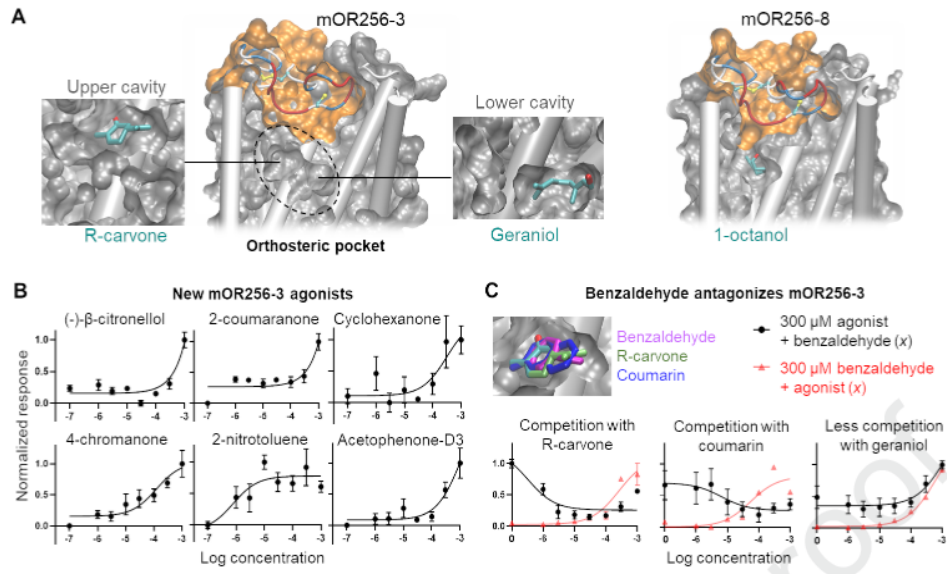
<sup>b</sup> Hit rate or precision, the fraction of true ligands among the model predicted ones.

<sup>c</sup> Recall indicates the fraction of true ligands retrieved by the model out of all the true ligands in the benchmark compounds.

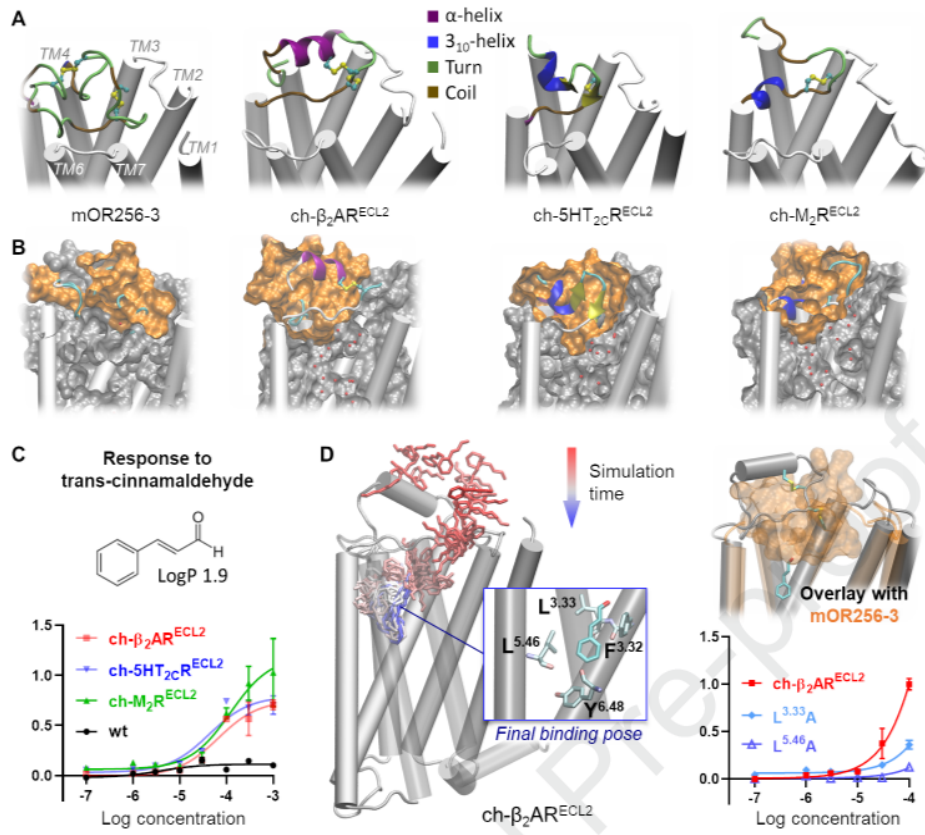
















### **Author Contributions**

Yiqun Yu: Conceptualization, Validation, Formal analysis, Investigation, Resources, Data Curation, Writing - Original Draft, Writing - Review & Editing, Visualization, Supervision, Funding acquisition

Zhenjie Ma: Formal analysis, Investigation, Data Curation

Jody Pacalon: Software, Validation, Formal analysis, Investigation, Resources, Data Curation, Funding acquisition

Lun Xu: Formal analysis, Investigation, Data Curation

Weihao Li: Formal analysis, Investigation, Data Curation

Christine Belloir: Formal analysis, Investigation, Data Curation

Jeremie Topin: Formal analysis, Investigation, Data Curation

Loïc Briand: Formal analysis, Investigation, Data Curation

Jérôme Golebiowski: Conceptualization, Software, Validation, Writing - Original Draft, Writing - Review & Editing, Supervision, Project administration, Funding acquisition

Xiaojing Cong: Conceptualization, Software, Validation, Formal analysis, Investigation, Resources, Data Curation, Writing - Original Draft, Writing - Review & Editing, Visualization, Supervision, Project administration



