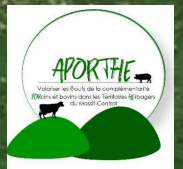
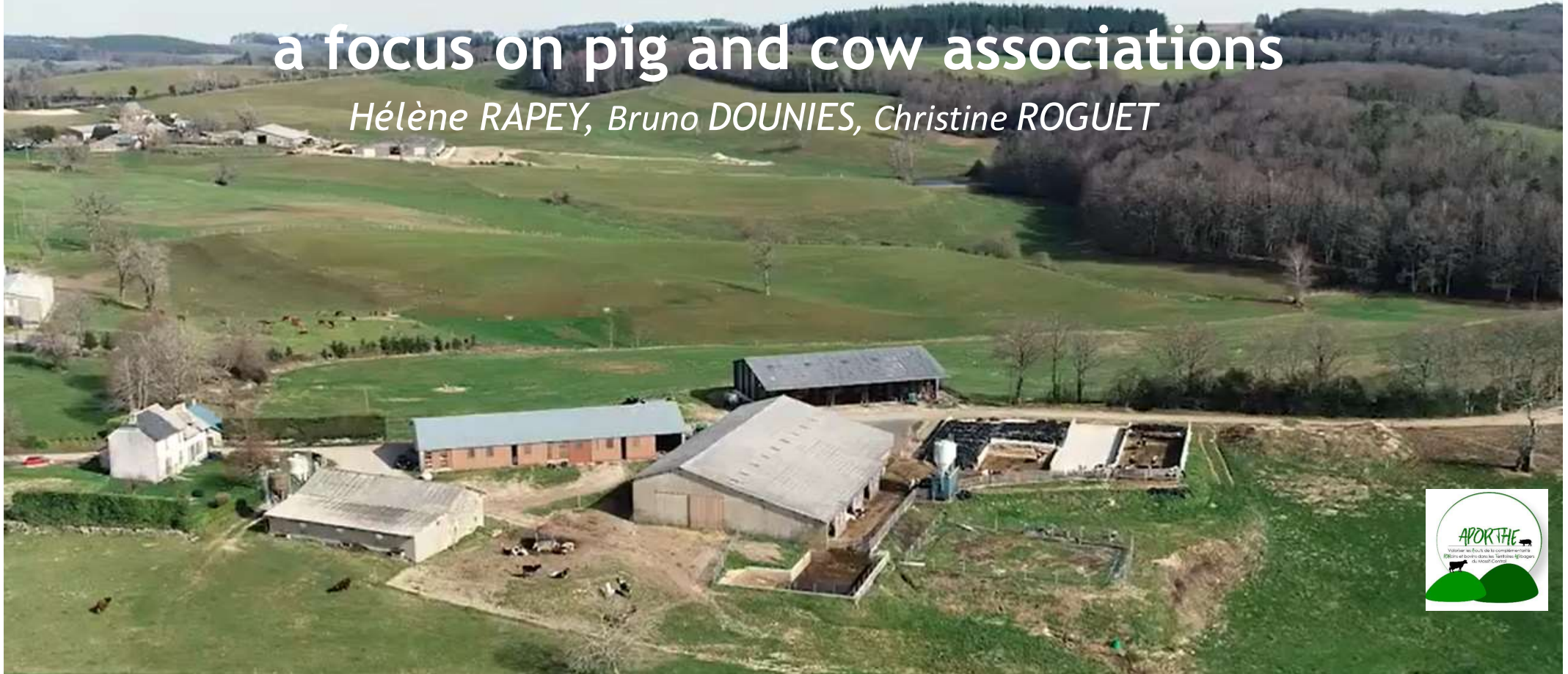
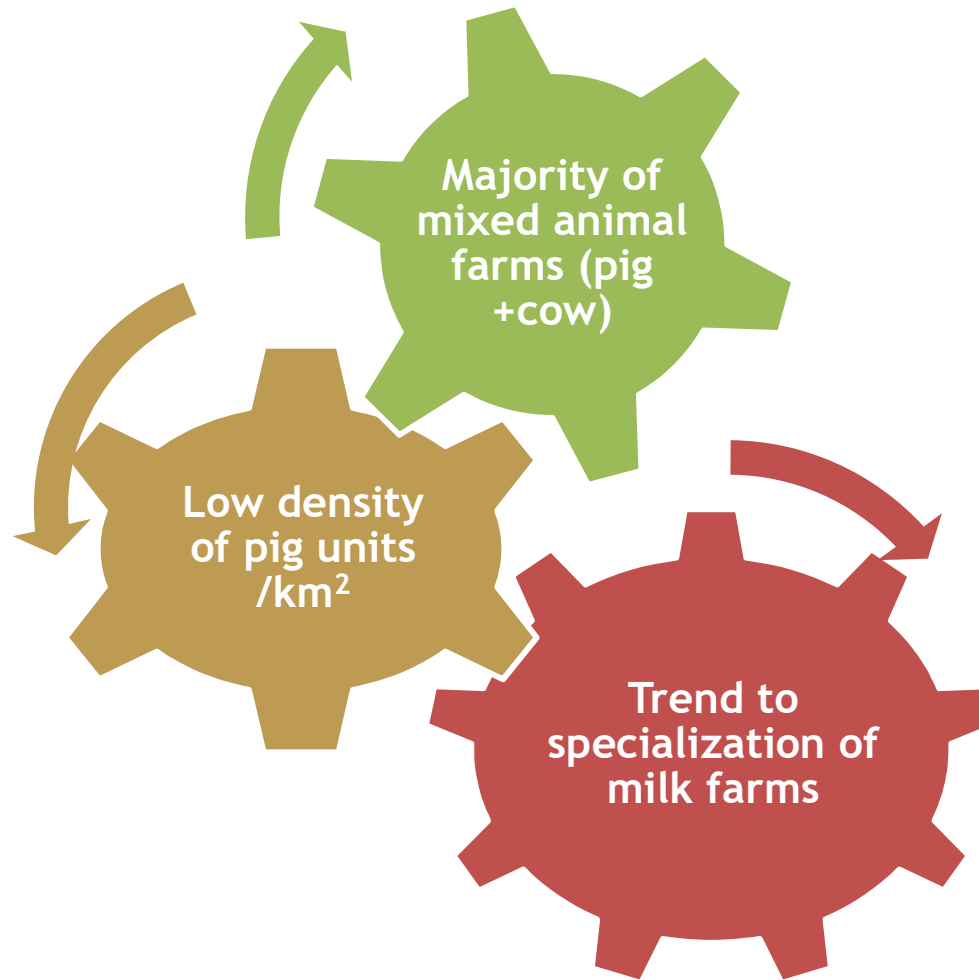


# What prospects for multi-species livestock farms in mountain areas: a focus on pig and cow associations

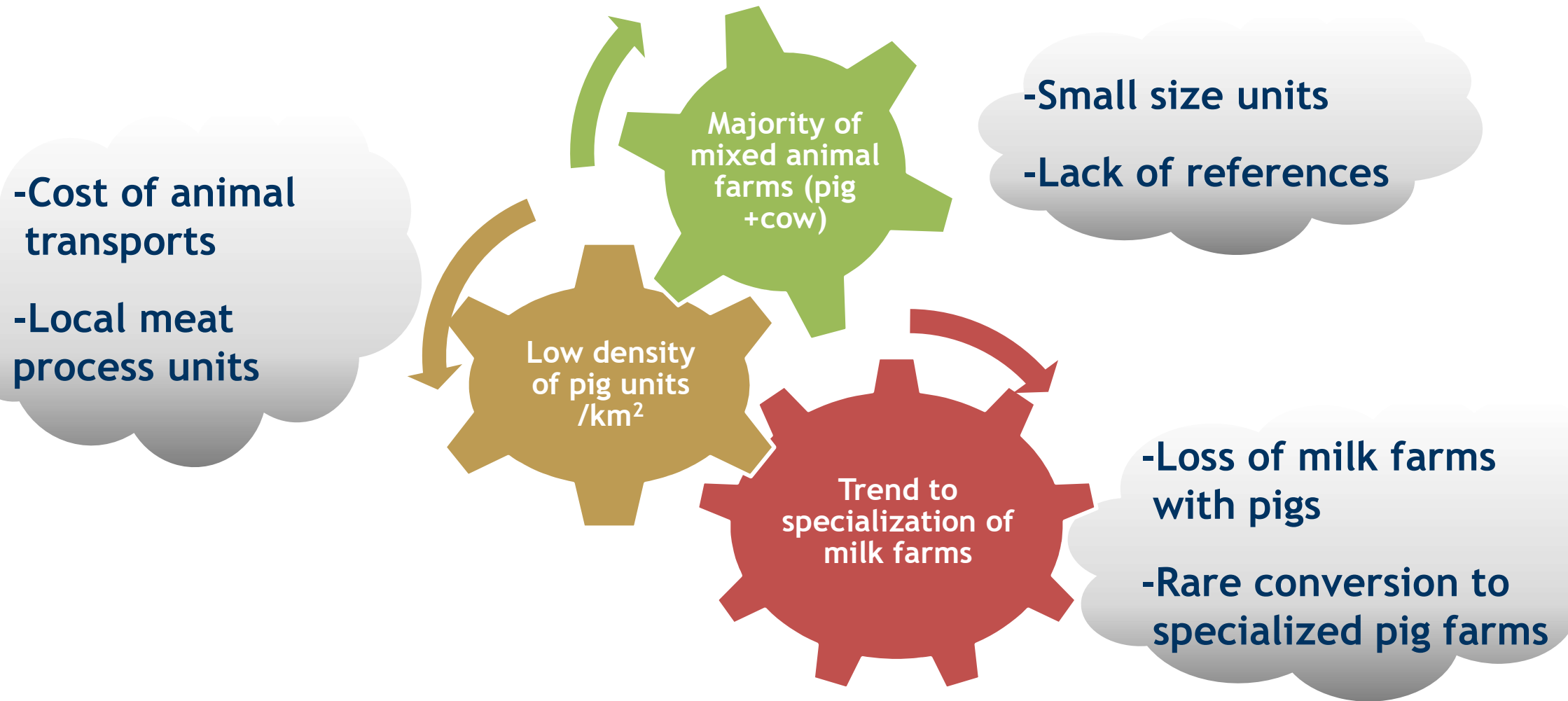
*Hélène RAPEY, Bruno DOUNIES, Christine ROGUET*



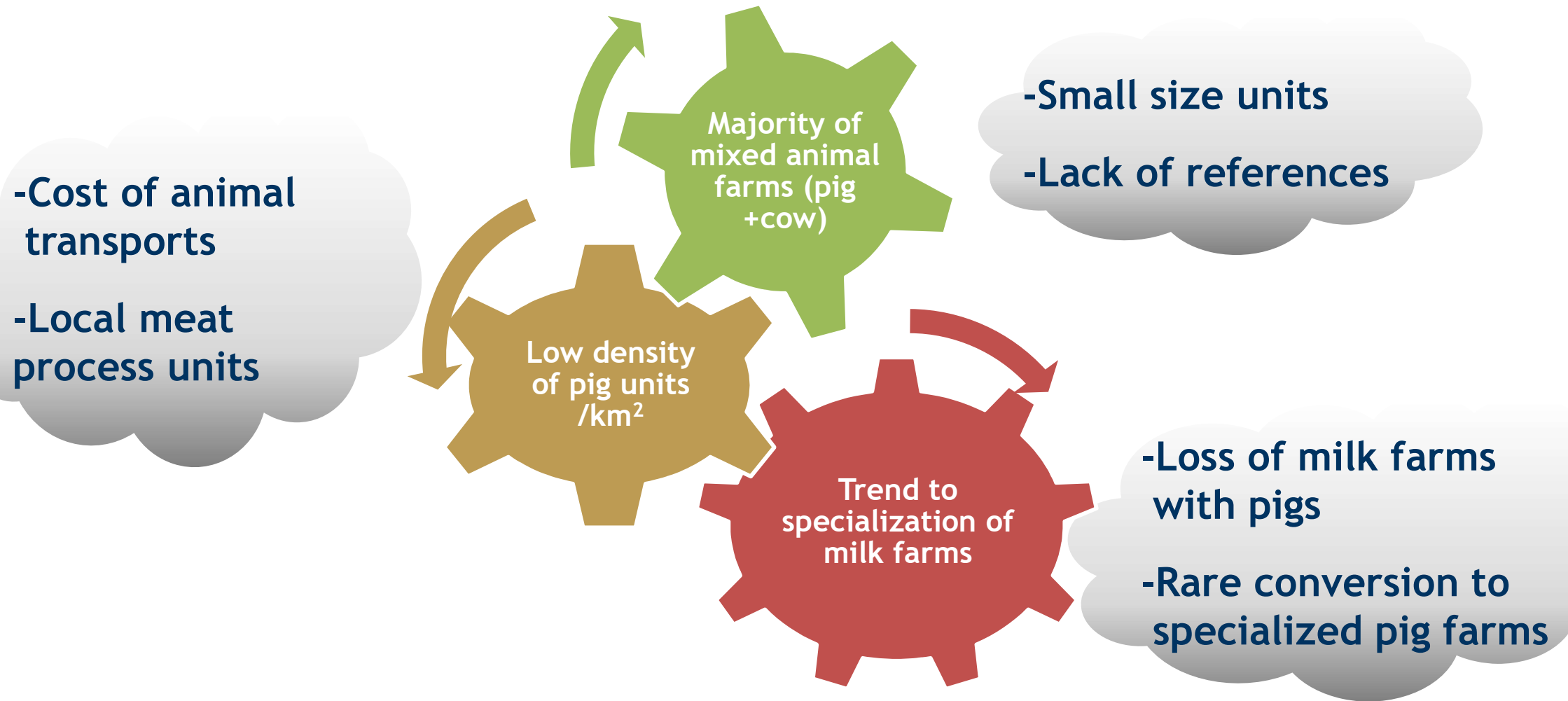
# Issues for pig production in mountain areas



# Issues of pig production in mountain areas



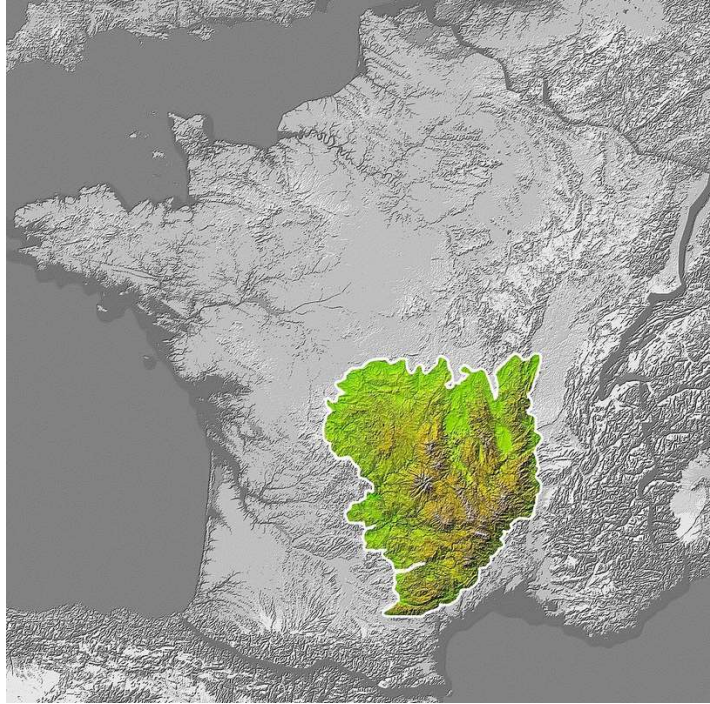
# Issues of pig production in mountain areas



⇒ **Needs for knowledge to reinforce this animal farming in context of globalization**

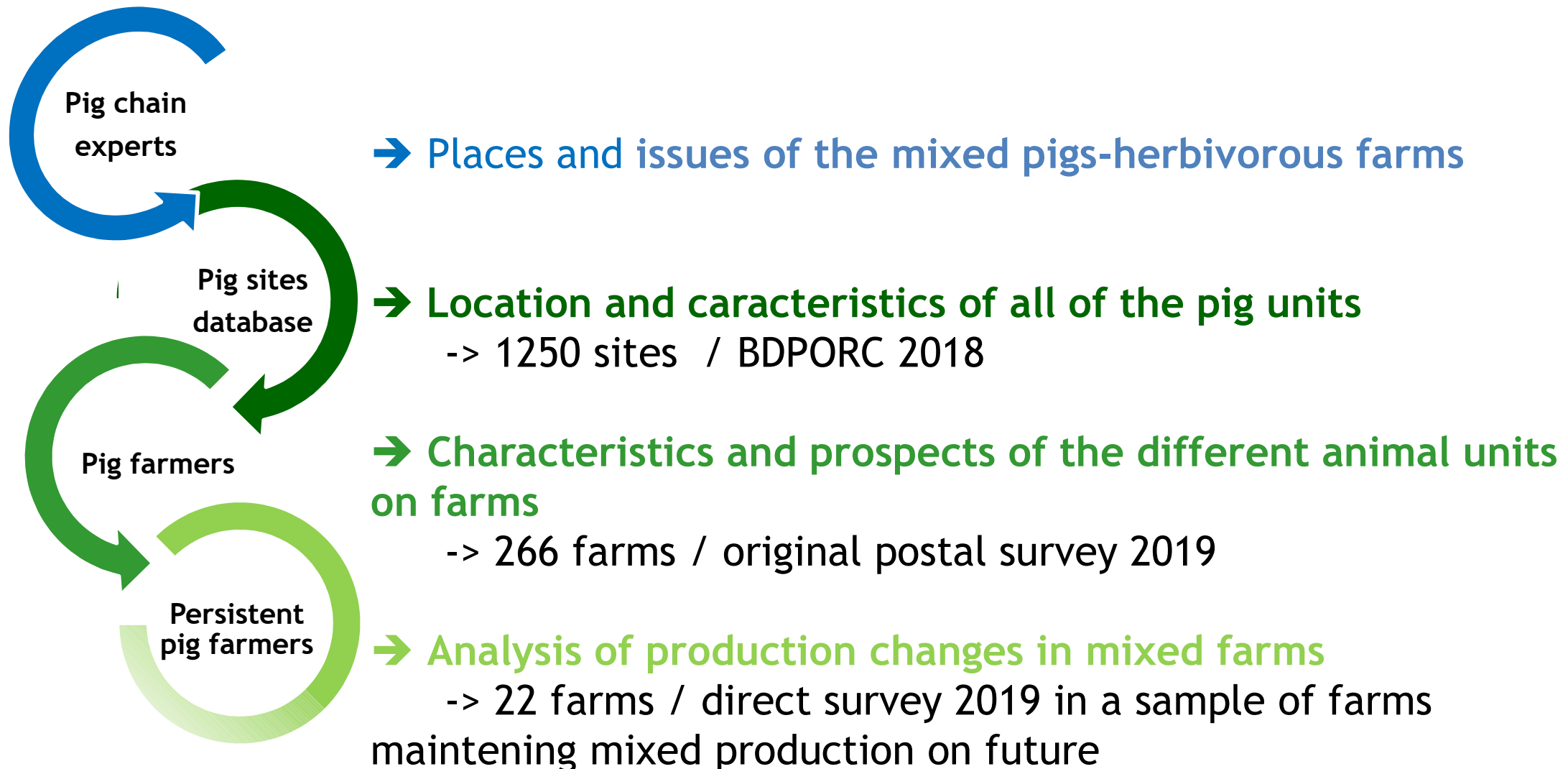


# Pig production in the French Massif Central



- 1 721 farms breeding pigs ... 3/4 with also herbivorous  
among 45 500 livestock farms :  
27 700 with meat cows, 9 800 milk cows, 8 600 with meat sheeps
- A dominant of conventional pig breeding with various quality marks

# Recent surveys to examine variability of pig farms in the Massif central



# Recent surveys to examine variability of pig farms in the Massif central

Pig chain experts

→ Places and issues of the mixed pigs-herbivorous farms

Pig sites database

→ Location and characteristics of all of the pig units

-> 1250 sites / BDPORC 2018

Pig farmers

→ Characteristics and prospects of the different animal units on farms

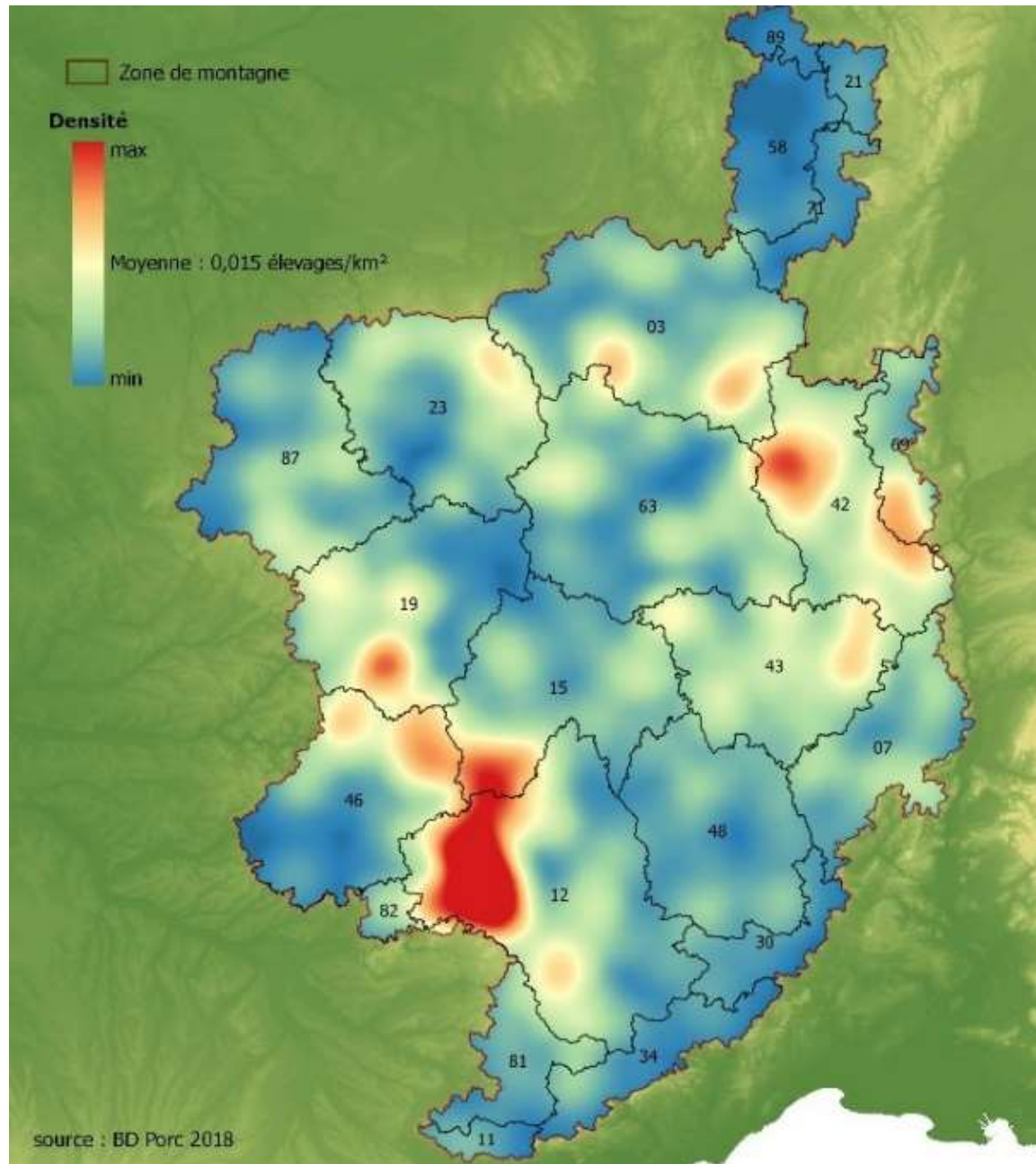
-> 266 farms / original postal survey 2019

Persistent pig farmers

→ Analysis of production changes in mixed farms

-> 22 farms / direct survey 2019 in a sample of farms maintaining mixed production on future

➔ The density of pig units is variable on the territory

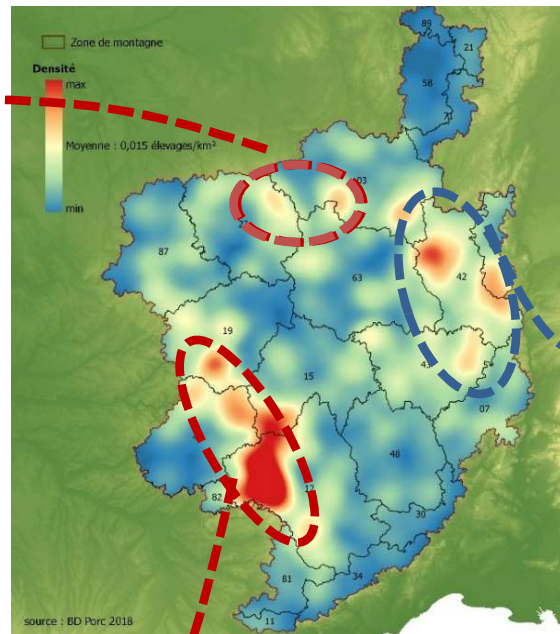


Maxi 5 pig units /100 km<sup>2</sup>



# → A majority of associations with meat cow breeding ... but important local variations

61% of farms  
with meat cows 



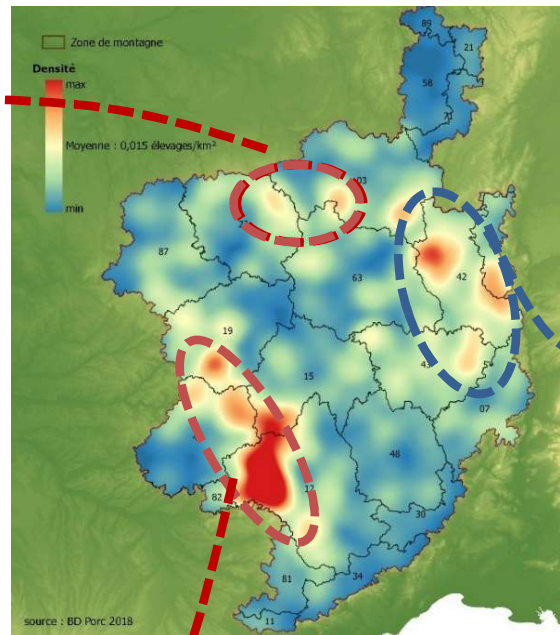
48% with milk cows 

57% with meat cows 

# → A majority of associations with meat cow breeding ... but important local variations

61% of farms  
with meat cows 

17% with meat sheeps 



48% with milk cows 

36% with meat cows 

57% with meat cows 

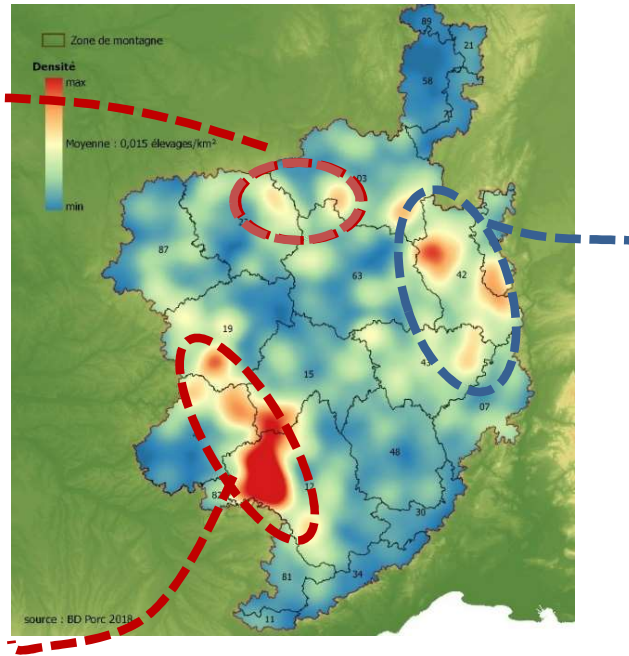
25% with milk cows 

# → A majority of farms selling pigs by long conventional network ... but important local variations

93% of farms selling pigs through 2 cooperatives



79% selling through 7 cooperatives

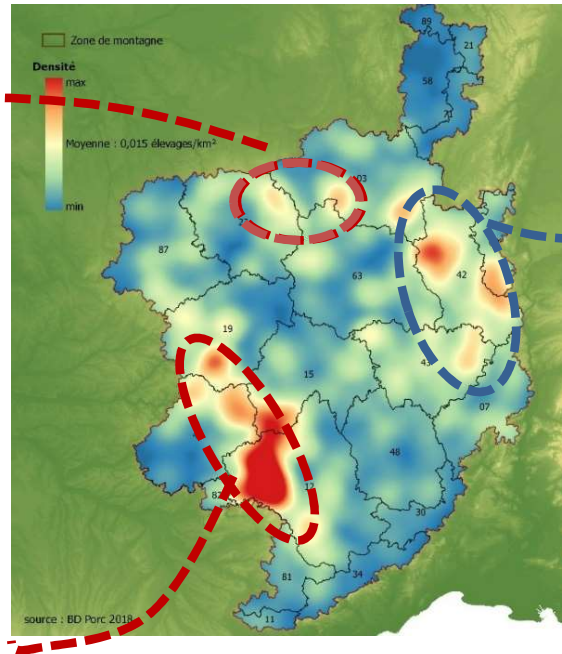


# → A majority of farms selling pigs by long conventional network ... but important local variations

93% of farms selling pigs through 2 cooperatives



79% selling through 7 cooperatives



52% selling through 3 cooperatives



# Conclusions

- Few farms with pigs ... but with very different breeding  
=> **low standardisation of animal productions**
- Some areas dense in pig units...but with different modes of sale => **low concentration of pig market**



# Conclusions

- Few farms with pigs ... but with very different breeding  
=> **low standardisation of productions**
- Some areas dense in pig units...but with different modes of sale => **low concentration of pig market**



**Need to include all types of actors in the elaboration of future strategy for Massif central pig chain and to progress in developing synergies**