



**HAL**  
open science

## Host-plant adaptation as a driver of incipient speciation in the fall armyworm ( *Spodoptera frugiperda* )

Estelle Fiteni, Karine Durand, Sylvie Gimenez, Robert L. Meagher Jr.,  
Fabrice Legeai, Gael J. Kergoat, Nicolas Nègre, Emmanuelle dAlençon, Ki  
Woong Nam

### ► To cite this version:

Estelle Fiteni, Karine Durand, Sylvie Gimenez, Robert L. Meagher Jr., Fabrice Legeai, et al.. Host-plant adaptation as a driver of incipient speciation in the fall armyworm ( *Spodoptera frugiperda* ). BMC Ecology and Evolution, 2022, 22, pp.133. 10.1101/2022.09.30.510290 . hal-03813221

**HAL Id: hal-03813221**

**<https://hal.inrae.fr/hal-03813221>**

Submitted on 24 Nov 2022

**HAL** is a multi-disciplinary open access archive for the deposit and dissemination of scientific research documents, whether they are published or not. The documents may come from teaching and research institutions in France or abroad, or from public or private research centers.

L'archive ouverte pluridisciplinaire **HAL**, est destinée au dépôt et à la diffusion de documents scientifiques de niveau recherche, publiés ou non, émanant des établissements d'enseignement et de recherche français ou étrangers, des laboratoires publics ou privés.



Distributed under a Creative Commons Attribution 4.0 International License

RESEARCH

Open Access



# Host-plant adaptation as a driver of incipient speciation in the fall armyworm (*Spodoptera frugiperda*)

Estelle Fiteni<sup>1</sup>, Karine Durand<sup>1</sup>, Sylvie Gimenez<sup>1</sup>, Robert L. Meagher Jr.<sup>2</sup>, Fabrice Legeai<sup>3,4</sup>, Gael J. Kergoat<sup>5</sup>, Nicolas Nègre<sup>1</sup>, Emmanuelle d'Alençon<sup>1</sup> and Kiwoong Nam<sup>1\*</sup>

## Abstract

**Background:** Divergent selection on host-plants is one of the main evolutionary forces driving ecological speciation in phytophagous insects. The ecological speciation might be challenging in the presence of gene flow and assortative mating because the direction of divergence is not necessarily the same between ecological selection (through host-plant adaptation) and assortative mating. The fall armyworm (FAW), a major lepidopteran pest species, is composed of two sympatric strains, corn and rice strains, named after two of their preferred host-plants. These two strains have been hypothesized to undergo incipient speciation, based on (i) several lines of evidence encompassing both pre- and post-zygotic reproductive isolation, and (ii) the presence of a substantial level of genetic differentiation. Even though the status of these two strains has been established a long time ago, it is still yet to be found whether these two strains indeed exhibit a marked level of genetic differentiation from a large number of genomic loci. Here, we analyzed whole genome sequences from 56 FAW individuals either collected from pasture grasses (a part of the favored host range of the rice strain) or corn to assess the role of host-plant adaptation in incipient speciation.

**Results:** Principal component analysis of whole genome data shows that the pattern of divergence in the fall armyworm is predominantly explained by the genetic differentiation associated with host-plants. The level of genetic differentiation between corn and rice strains is particularly marked in the Z chromosome. We identified one autosomal locus and two Z chromosome loci targeted by selective sweeps specific to rice strain and corn strain, respectively. The autosomal locus has both increased  $D_{XY}$  and  $F_{ST}$  while the Z chromosome loci had decreased  $D_{XY}$  and increased  $F_{ST}$ .

**Conclusion:** These results show that the FAW population structure is dominated by the genetic differentiation between corn and rice strains. This differentiation involves divergent selection targeting at least three loci, which include a locus potentially causing reproductive isolation. Taken together, these results suggest the evolutionary scenario that host-plant speciation is a driver of incipient speciation in the fall armyworm.

**Keywords:** Fall armyworm, Host-plant adaptation, Incipient speciation, Speciation with gene flow, *Spodoptera frugiperda*

## Introduction

Host-plant adaptation is one of the main evolutionary forces causing ecological speciation in phytophagous insects [1] since plants provide nutrients, oviposition sites, and mating places. Population genomics and molecular evolutionary analyses provide powerful tools to identify adaptively evolved insect genes potentially causing

\*Correspondence: ki-woong.nam@inrae.fr

<sup>1</sup> DGIMI, Univ Montpellier, INRAE, Montpellier, France  
Full list of author information is available at the end of the article



© The Author(s) 2022. **Open Access** This article is licensed under a Creative Commons Attribution 4.0 International License, which permits use, sharing, adaptation, distribution and reproduction in any medium or format, as long as you give appropriate credit to the original author(s) and the source, provide a link to the Creative Commons licence, and indicate if changes were made. The images or other third party material in this article are included in the article's Creative Commons licence, unless indicated otherwise in a credit line to the material. If material is not included in the article's Creative Commons licence and your intended use is not permitted by statutory regulation or exceeds the permitted use, you will need to obtain permission directly from the copyright holder. To view a copy of this licence, visit <http://creativecommons.org/licenses/by/4.0/>. The Creative Commons Public Domain Dedication waiver (<http://creativecommons.org/publicdomain/zero/1.0/>) applies to the data made available in this article, unless otherwise stated in a credit line to the data.

host-plant adaptation. These genes encode chemosensory proteins to detect suitable plants, oral secretion proteins to respond to plant defense, digestion genes to catabolize plant molecules, and detoxifying proteins to neutralize plant secondary metabolites [2, 3]. Several studies also show that these genes exhibit accelerated adaptive evolutionary rates in phytophagous insects [4–6]. Interestingly, polyphagous phytophagous insects generally have higher numbers of detoxification and chemosensory genes than monophagous ones [7–10] probably due to the consequence of the interactions with diverse plant molecules from diverse plant species [11].

In the presence of gene flow, speciation by host-plant adaptation can be challenging. Typical speciation processes with gene flow involve both prezygotic reproductive isolation by assortative mating and postzygotic reproductive isolation by ecological divergent selection (such as divergent selection on the usage of host-plants) [12]. As demonstrated by the classical paper by Felsenstein [13], recombination between genetic loci determining assortative mating and ecological divergent selection generates all allelic combinations for these loci, and evolutionary trajectories of divergence are determined by the relative strength between ecological divergent selection and assortative mating. Therefore, the presence of divergent selection on host-plants does not necessarily imply that speciation will occur between two populations with different host-plants. Since the 1990s, theoretical evolutionary studies have shown that speciation may occur even in the presence of gene flow in particular sets of conditions overcoming the homogenizing effect of recombination, and almost a hundred models of speciation with gene flow have been proposed [12]. For example, if host-plants provide both nutrients and mating sites, such as in the case of the *Rhagoletis pomonella* sibling-species complex [14, 15], recombination does not affect divergence because there is only one trait causing the divergence [16, 17]. In this case, speciation may occur readily between a pair of sympatric populations.

The fall armyworm (FAW), *Spodoptera frugiperda* (Lepidoptera: Noctuidae: Noctuinae) is a major pest species native to the Americas that recently invaded the Eastern hemisphere, with invasive populations being first reported in West Africa in 2016 [18]. Since then, it quickly spread in almost all of sub-Saharan Africa, and then progressively expanded its range in Egypt, Asia, and Australasia (<https://www.cabi.org/isc/fallarmyworm>), and the FAW is considered one of the worst invasive pest species in Africa [19]. The FAW consists of two ecologically divergent host-plant strains, referred to as the corn strain (sfC) and rice strain (sfR) [20, 21]. Even though the FAW is a very opportunistic and polyphagous pest species [22], sfC and sfR strains are known for displaying

differentiated ranges of preferred host-plants, such as sfC prefers corn, sorghum, and cotton, whereas sfR prefers rice, millet, and pasture grasses. The two strains are observed in sympatry in the FAW native range. Hybrid individuals have been also documented with proportions as high as 16% [23]. Reciprocal transplant experiments demonstrated that the two strains present differential performances on their preferred host-plants [24], which implies the existence of differential host-plant adaptation. Interestingly, sfC and sfR have allochronic mating patterns [25, 26] and different compositions of sexual pheromone blends [27, 28], and hybrid crosses generated in a lab have reduced fertility [29], implying a possibility that host-plant adaptation might not be a single evolutionary force causing divergence in FAWs. The status of both strains has been often questioned [30, 31], and the extant consensus is that these two strains are engaged in a process of incipient speciation [32]. Mitochondrial cytochrome *c* oxidase subunit 1 (COX1) gene [33, 34] and Z chromosome Triosephosphate isomerase (TPI) gene [35] have been widely used to identify both strains.

Several studies demonstrated that genomic differentiation occurs between sfC and sfR strains. For example, Tessnow et al. [36] showed from samples collected from Texas that sfC and sfR have allochronic matings as well as genomic differentiation. Durand et al. [37] analyzed whole genome resequencing data, originally generated by Schlum et al. [38], of 55 samples collected from Argentina, Brazil, Kenya, Puerto Rico, and the mainland USA. They also observed that whole genome sequences are differentiated between sfC and sfR samples, partly due to very strong divergent selection on Z chromosomes, which caused autosomal differentiation by genome hitchhiking [39]. It should be noted that most samples in these studies were collected at the adult stages near corn or sorghum, which are known to belong to the preferred host-plants of sfC. Therefore, the effect of host-plant during larval stages in the incipient speciation of FAW is still unknown. We first reported genomic differentiation between strains from larval samples collected from a corn field in Mississippi [8, 40]. However, larval samples from sfR-preferred host-plants were not included in these studies. In short, the effect of host-plant in genomic differentiation is yet to be reported.

In this study, we analyzed whole genome sequences of FAW samples at the larval stage that were collected from corn fields (one of the sfC preferred host-plants) and a pasture grass field (part of the sfR preferred host range) to test whether differential host-plant adaptation drives incipient speciation between sfC and sfR. First, we test whether the population structure of FAW is mainly determined by the differential ranges of host-plants. Second, we test the existence of divergent selection that

potentially caused differential adaptation to host-plants. Third, we test the genetic differentiation of the *vrille* gene, which was shown to determine allochronic mating patterns in FAW [25]. It should be noted that we do not test for the possibility that speciation occurs only through differential host-plant adaptation. Instead, we aim at testing the major effect of host-plant adaptation during potential incipient speciation in the FAW.

**Results**

**Reference genome assembly, strains, and resequencing dataset**

The size of the assembled reference genome was 385 Mb, and N50 is 10.6 Mbp. L90 is 26, which is close to the known number of chromosomes in the FAW (31), implying that we nearly have chromosome-sized scaffolds in this assembly. The BUSCO analysis [41] showed that this assembly had the highest correctness among all published FAW genome assemblies (Additional file 1: Table S1). The number of identified SNVs (single nucleotide variations) from 56 samples was 22,877,074.

When the TPI locus was used to identify strains, an almost perfect correlation between host-plants and the identified strain was observed (Table 1, Additional file 1: Table S2, and Fig. S1), with the single exception that an sfR individual was found from a corn field (MS\_R\_R6). When the mitochondrial COX1 was used, one and ten

samples from the pasture grass were assigned to sfC and sfR, respectively. The numbers of sfC and sfR samples from corn fields were 33 and 12, respectively.

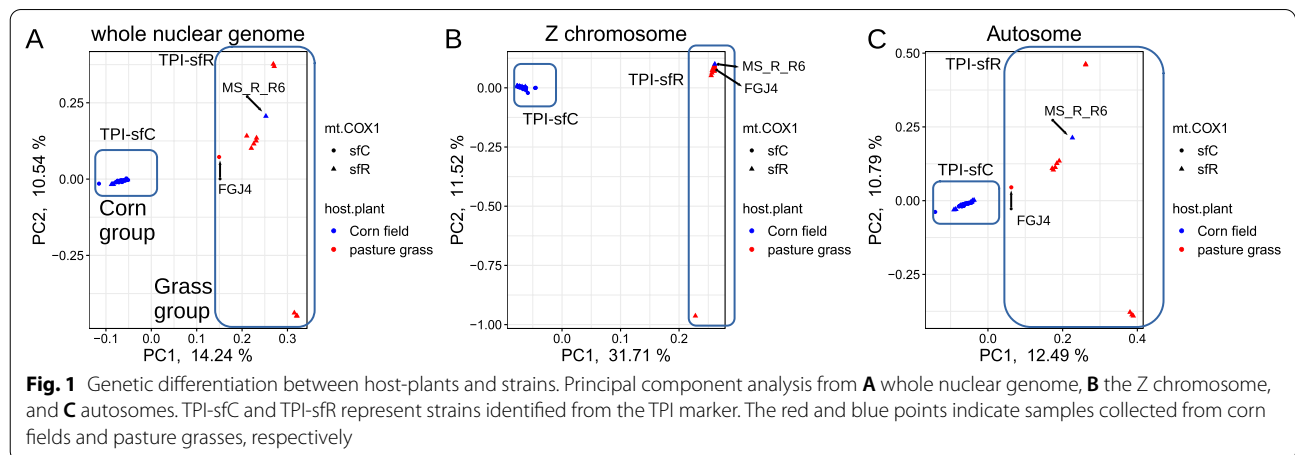
**The effect of host-plants on genetic differentiation**

Principal component analysis (PCA) of whole genome data recovered two groups at the first principal component (Fig. 1A). This grouping had a perfect correlation with host-plants with a single exception of a single sample from corn (MS\_R\_R6), which was clustered with other samples from pasture grasses. Here, we categorized the groups composed of samples from corn and pasture grasses as the corn group and the grass group, respectively. All the samples from the corn group and the grass group were assigned to sfC and sfR according to the TPI marker, respectively. All samples from the grass group were assigned to sfR identified based on the mitochondrial COX1 marker except for one sample (FGJ4). In the corn group, 33 and 11 samples were assigned to sfC and sfR according to the mitochondrial COX1 marker, respectively. Interestingly, all 13 samples from the corn group in Florida were sfC according to the mitochondrial COX1 marker, whereas only 62.5% of the corn group in Puerto Rico and Mississippi were sfR (20 out of 32). The grouping according to geographic population was not observed within the corn group from the first to tenth principal components (Additional file 1: Fig. S2).

When PCA was performed from the Z chromosome and autosomes separately, the same trend was observed (Fig. 1B and C). Notably, the Z chromosome PCA showed that FGJ4 was found within the corn group, whereas the autosomal PCA results indicated that FGJ4 was closest to the grass group along with the first principal component. This result implied the possibility that FGJ4 is a hybrid between the corn group and the grass group. Therefore, we performed ancestry coefficient analysis to test this

**Table 1** The numbers of identified sfC and sfR samples using the TPI or the mitochondrial COX1 markers

| Host-plants   | TPI |     | mtCOX1 |     |
|---------------|-----|-----|--------|-----|
|               | sfC | sfR | sfC    | sfR |
| Corn field    | 44  | 1   | 33     | 12  |
| Pasture grass | 0   | 11  | 1      | 10  |



possibility from the samples from Florida. Samples from the corn group and the grass group exhibited differentiated ancestry, while FGJ4 had almost the same proportions of ancestry between the corn group and the grass group (Additional file 1: Fig. S3).

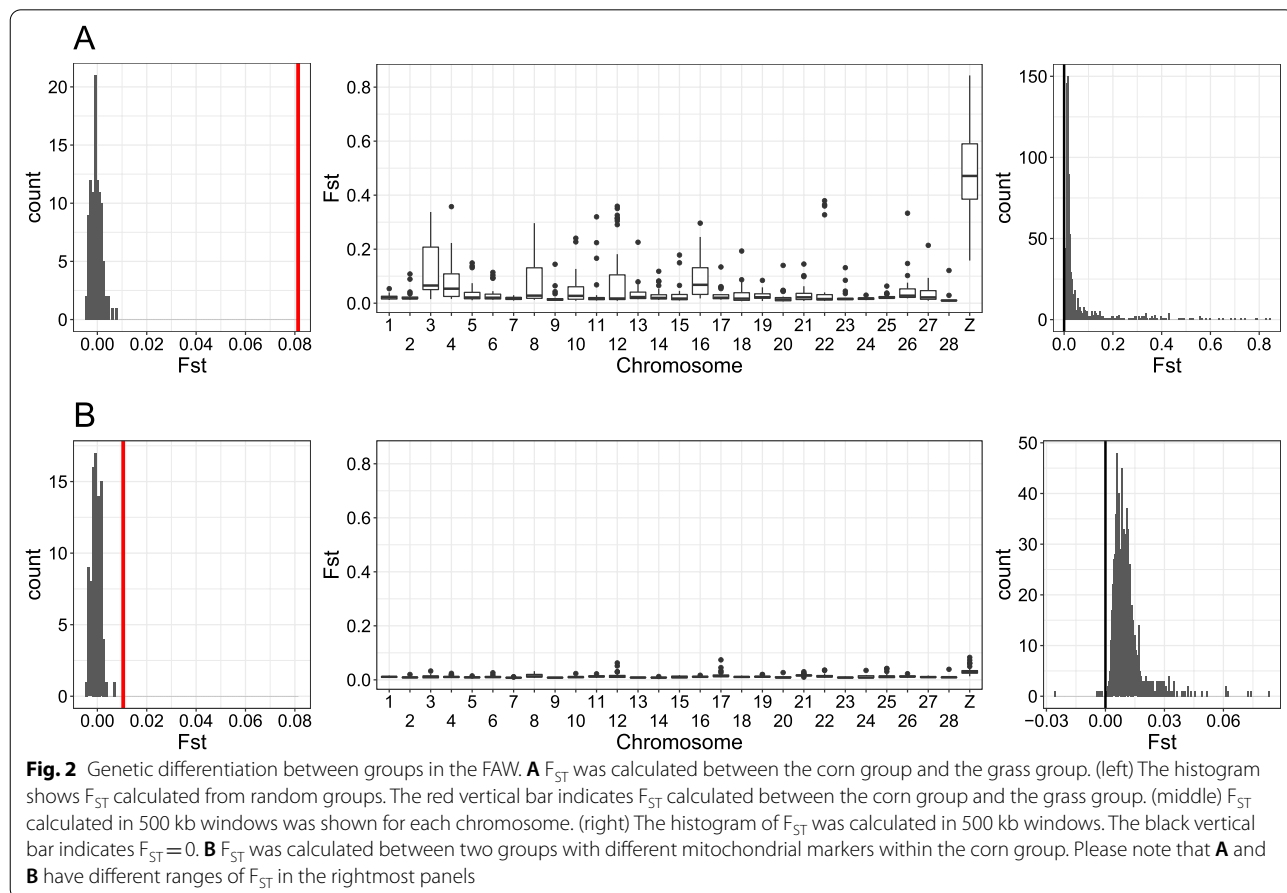
We further tested genetic differentiation using  $F_{ST}$  statistics. The average  $F_{ST}$  between the corn group and the grass group was 0.0813. To test whether this  $F_{ST}$  value can be generated by chance,  $F_{ST}$  was calculated from random grouping with 100 replications. All 100 replications had  $F_{ST}$  lower than 0.0813 (equivalent to  $p$ -value < 0.01) (Fig. 2A).  $F_{ST}$  from the Z chromosome was 0.4603, which is far higher than all autosomal chromosomes, as shown from previous studies [36, 37]. In total, 100% of untruncated 500 kb windows have  $F_{ST}$  higher than zero and statistically significant genetic differentiation was observed from 99.6% of the windows (FDR corrected  $p$ -value < 0.05). These results imply genomic differentiation (GD), which was defined as a status where genetic differentiation occurred in a vast majority of loci (e.g., > 90%) across the whole genome [40].

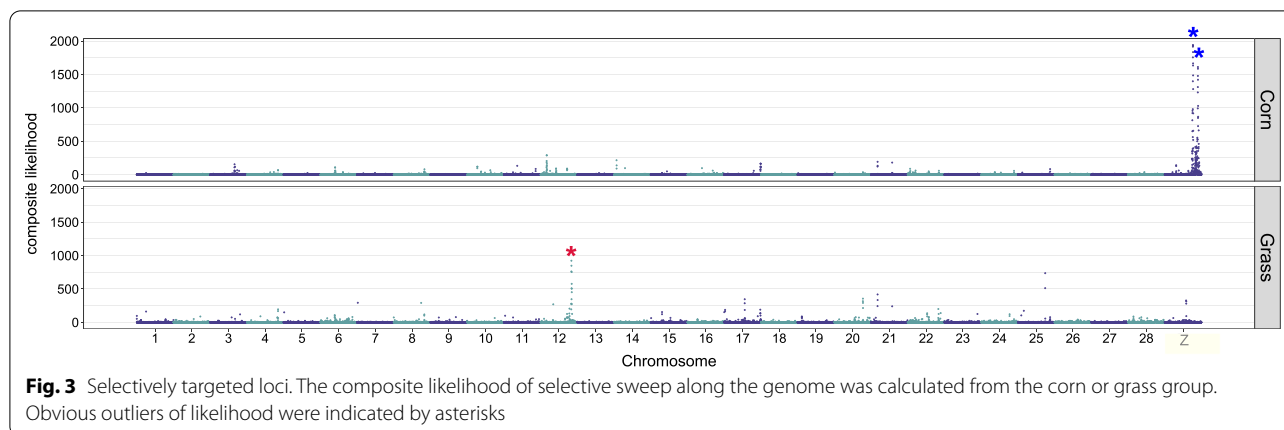
$F_{ST}$  between sfC and sfR with different mitochondrial markers from the corn field was only 0.0105. However,

none of the 100 replications with random grouping had  $F_{ST}$  lower than 0.0105 (Fig. 2B), which implies a statistically significant genetic differentiation ( $p$ -value < 0.01), as shown previously [8, 40, 42].  $F_{ST}$  calculated from the Z chromosome was 0.0292, which was slightly higher than autosomes. We observed that 99.60% of untruncated 500 kb windows have  $F_{ST}$  higher than 0, and 92.7% of these windows exhibited statistically significant genetic differentiation. These results imply GD between sfC and sfR within the corn group.

**Divergent selection between corn and grass groups**

Targets of divergent selection were identified from genetic footprints of selective sweeps using the composite likelihood approach [43]. We considered outliers of composite likelihood specific to the corn or grass groups to be targets of selective sweeps to minimize the possibility of background selection [44, 45]. The grass group had one obvious outlier reflecting the composite likelihood of selective sweep on chromosome 12, while the corn group had two outliers on the Z chromosome (Fig. 3, Additional file 1: Fig. S4, and Table S3). Four genes were identified from the grass group-specific outlier, but the function of





these genes is unclear (Additional file 2: Table S4). The two corn group-specific outliers had 58 genes, which include 47 genes with unknown functions.

If a selectively targeted locus caused reproductive isolation, then this locus is expected to have an increased level of absolute differentiation (i.e.,  $D_{XY}$ ) because the reduced rate of gene flow causes an ancient divergence time, and an increased level of relative differentiation (i.e.,  $F_{ST}$ ) because natural selection removes shared SNPs between populations [46]. Our forward simulation showed that divergently targeted loci with reduced gene flow exhibited increased  $F_{ST}$  and  $D_{XY}$  (Additional file 1: Fig. S5), confirming this expectation. Then, we calculated  $D_{XY}$  and  $F_{ST}$  from the chromosomes containing the identified targets of selective sweeps. The grass group-specific outlier on chromosome 12 had increased  $D_{XY}$  and increased  $F_{ST}$  (Fig. 4A). The two corn group-specific outliers on the Z chromosome showed increased  $F_{ST}$ , but increased  $D_{XY}$  was not observed from these outliers (Fig. 4B).

The *vriIle* gene was reported to cause allochronic mating behavior in FAW through QTL mapping [25]. Thus, we tested whether there is an elevated genetic differentiation at the *vriIle* gene. Interestingly,  $F_{ST}$  does not appear to be particularly higher at the *vriIle* gene than the chromosomal average (Additional file 1: Fig. S6).

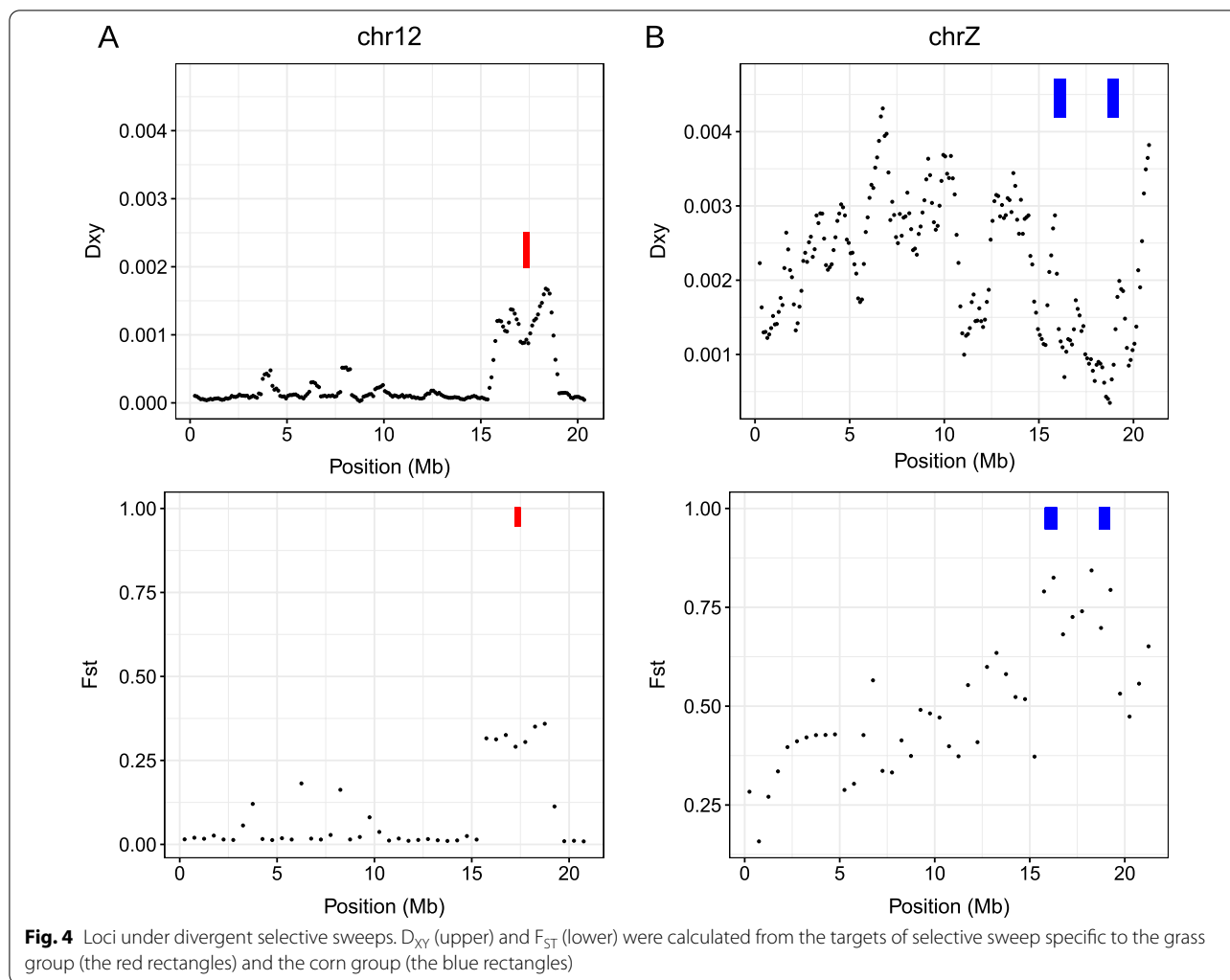
## Discussion

Divergent selection on host-plants is often considered to be one of the main evolutionary forces driving speciation in phytophagous insects. In this study, we showed that the FAW is composed of two genomically differentiated groups with different host-plants, the corn group and the grass group, based on population genomics analyses (Figs. 1 and 2A). The ancestry coefficient analysis supported the existence of hybrids (FGJ4), suggesting the presence of gene flow (Additional file 1: Fig. S3). We identified three loci that were targeted by corn or

grass group-specific selective sweeps (Fig. 3), suggesting the possibility that divergent selection contributed to the genetic differentiation between the corn and the grass groups. The grass group-specific target had both increased  $D_{XY}$  and  $F_{ST}$  (Fig. 4A), implying that divergent selection on this locus caused reproductive isolation. Intriguingly, the two corn group-specific targets did not have increased  $D_{XY}$  (Fig. 4B), making the link between divergent selection and reproductive isolation unclear. Taken together, we conclude that the FAWs analyzed in this study are composed of two genomically differentiated groups with differentiated ranges of host-plants and that divergent selection contributed to the speciation process between these two groups. Interestingly, we also observed genetic differentiation between the two mitochondrial strains within the corn group (Fig. 2B).

We propose the following evolutionary scenario of speciation in FAW from these results (Fig. 5). (i) Divergent selection targeting chromosome 12 caused reproductive isolation between ancestral corn and grass groups (Fig. 4A). The ancestral corn group experienced divergent selection on the Z chromosome (Fig. 4B). As a consequence, extant corn and grass groups had differentiated ranges of host-plants with differentiated genomic sequences (Figs. 1 and 2A). (ii) Following evolutionary forces caused the nuclear divergence of the corn group into two sub-groups (Fig. 2B), possibly involving mild divergent selection targeting many loci [40]. These two sub-groups had different mitochondrial genomic sequences including the COX1 genes (Additional file 1: Fig. S1) for a reason yet to be identified. We suggest that the corn group and the grass group should be considered as sfC and sfR, respectively. Here, the two sub-groups within the corn group can be presumably named mt-A and mt-B, rather than sfC or sfR.

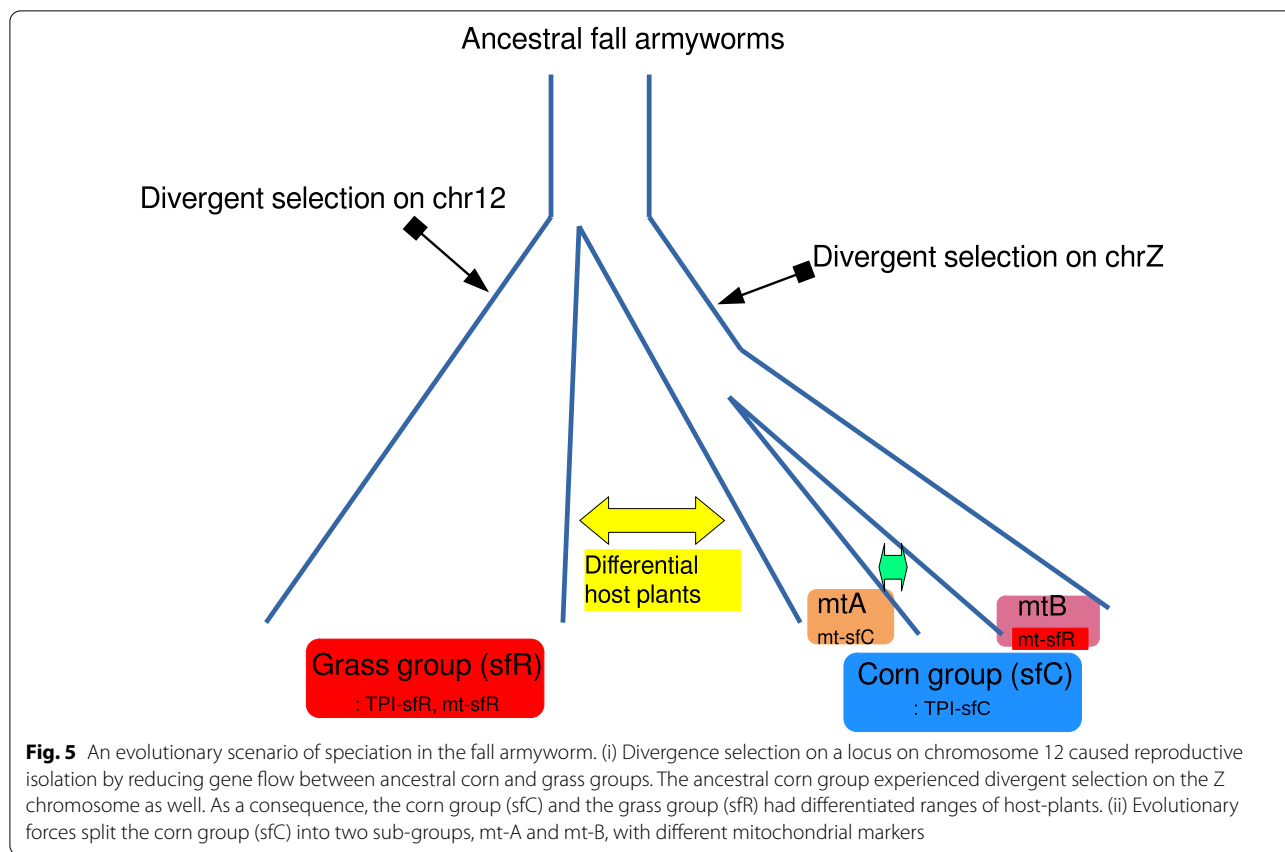
Interestingly, genetic differentiation was observed across almost the entire genomic loci (i.e., GD), between



sfC (the corn group) and sfR (the grass group), and between mt-A and mt-B. In other words, the significant genomic differentiation between sfC and sfR or between mt-A and mt-B is caused by very large numbers of loci with low genetic differentiation, rather than small numbers of loci with high genetic differentiation. Geographic separation is not likely to be a plausible explanation because the strong migratory behavior of FAW [47] likely causes genetic admixtures between the two geographic populations within ~150 km distance (i.e. the grass group and the corn group in Florida), through gene flow. In the presence of such gene flow, only loci targeted by divergent selection are expected to be differentiated between intraspecific races [48]. Moreover, mt-A and mt-B were collected from the same field. Indeed, we did not observe population structure according to the geographic populations within the analyzed sfC samples (Additional file 1: Fig. S2). According to the theoretical prediction, if divergent selection is sufficiently strong, such that

the selection coefficient is higher than the migration rate [49] or the recombination rate [50], GD may occur through the hitchhiking effect. Alternatively, if the combined effect of mild divergent selection is sufficiently strong, then GD may occur for the same reason [51, 52]. This hitchhiking effect was previously coined as genome hitchhiking [39]. We postulate that the observed divergent selection on chromosome 12 and Z chromosomes might be sufficiently strong to contribute to the generation of GD. In a previous study, we also showed that mild divergent selection caused GD between mt-A and mt-B in the FAW population in Mississippi [40]. Here, we hypothesize that the combined effect of mild divergent selection caused GD between mt-A and mt-B in the other geographic populations.

We argue that the mitochondrial COX1 gene [33], and the Z chromosome TPI marker [35] should be used for different purposes. The almost perfect correlation between the genotypes at TPI genes and host-plant



**Fig. 5** An evolutionary scenario of speciation in the fall armyworm. (i) Divergence selection on a locus on chromosome 12 caused reproductive isolation by reducing gene flow between ancestral corn and grass groups. The ancestral corn group experienced divergent selection on the Z chromosome as well. As a consequence, the corn group (sfC) and the grass group (sfR) had differentiated ranges of host-plants. (ii) Evolutionary forces split the corn group (sfC) into two sub-groups, mt-A and mt-B, with different mitochondrial markers

groups suggests that the TPI marker can be used to identify host-plant strains. We consider that mitochondrial COX1 is an improper marker to identify *host-plant* strains as we showed that samples with sfR markers have been frequently observed from corns, as also shown in previous studies [36, 40, 42]. The genomic differentiation between mitochondrial subgroups (Fig. 2B) suggests that mitochondrial COX1 can be still used to identify *some* genetic identities within the corn group (i.e., mt-A and mt-B). FAWs from invasive populations are predominantly found in corns [53], and invasive FAWs have sfC-type TPI sequences and sfR-type COX1 sequences [54, 55]. In this case, invasive FAW populations should be considered as sfC, rather than hybrids.

Tessnow et al. [36] showed that allochronic mating patterns may have caused genomic differentiation between sfC and sfR using the samples collected from corn and sorghum, which are preferred host-plants by sfC. They proposed that sfC and sfR should be considered allochronic strains, rather than host-plant strains. However, we believe that this argument is yet to be accepted because they did not analyze samples collected from sfR-preferred host-plants. Interestingly, the differentiation between sfC and sfR appears to be clear when strains were identified from three Z-linked SNVs [56] while the

differentiation between sfC and sfR was less clear when mitochondrial COX1 was used. Importantly, because they collected samples in adult stages, the host-plant during larval stages remained unidentified. It is possible that the sfC and sfR identified by Tessnow et al. [36] might correspond to the corn group and the grass groups identified in this study. It is worthwhile to note that Tessnow et al. used different markers to identify strains (i.e., three interspersed SNVs on the Z chromosome. Gene flow from sfR to sfC will increase the relative frequency of grass-fitted alleles (G) to corn-fitted alleles (g) in the corn group. Assortative mating by allochronic mating in the corn group will reduce the efficacy of ecological divergence selection because g-carrying individuals have an increased chance to mate with other individuals with the same strain (sfC or sfR) by assortative mating. Then, the allele frequency of g could be maintained in the sfC despite ecological selection against g, depending upon the relative strength of assortative mating to ecological divergent selection. In other words, the direction of divergence can be different between pre-zygotic and post-zygotic reproductive barriers by recombination, and this unequal direction could interfere with the speciation process. If both preferred host-plants and mating time are determined by the same loci, this interference



does not occur and the evolutionary trajectory of differentiation is expected to be the same between differential host-plant adaptation and allochronic mating pattern. If this possibility is true, differential host-plant adaptation and allochronic mating patterns may have additive effects on speciation. The *vrille* gene was proposed to be a gene controlling allochronic mating [25], but we did not find support that this gene caused genetic differentiation between sfC and sfR or mt-A and mt-B (Additional file 1: Fig. S6).

We acknowledge that geographic effects on grass-eating FAWs were not taken into account in our analysis because this study is based on a single geographic location for grass-eating FAWs (i.e., grass group). Future studies will need to include more geographic locations both for grass and corn-eating FAW. We also acknowledge that the role of identified genes under divergent selection (Additional file 2: Table S4) in speciation is still unclear. If we can narrow down candidate genes in which different alleles generate different fitness in a host-plant species, functional genomic studies could be straightforward to test the role of these candidate genes in host-plant adaptation through RNAi or CRISPR/CAS9 experiment. The resolution of selection scans can be greatly increased when SNVs are phased [57]. Long-read sequencing can be particularly useful for this purpose.

In this study, we posit that host-plant adaptation is one of the main drivers of incipient speciation in the FAW. This speciation process appears to involve divergent selection causing reproductive isolation. The FAW displays differentiated phenotypes potentially causing both prezygotic and postzygotic reproductive barriers. Interestingly, the evolutionary trajectory under these phenotypes may not be uniform in a way of separating the FAW into sfC and sfR. To better understand how interactions between these phenotypes ultimately generated a pattern of genomic differentiation driven by host-plants, future studies should integrate analyses of whole genome sequences from phenotyped individuals collected from a wide range of geographic locations.

## Materials and methods

### Genome assembly

We performed the mapping of available Illumina reads (~80X) [8] from a single sfC individual from a laboratory strain, which was seeded from a population in Guadeloupe in 2000 [8], against an sfC assembly, which was generated from 30X PacBio reads from the same strain in our previous study [40], using SMALT (Sanger Institute). Potential errors in the assemblies were identified using reapr [58]. If an error was found over a gap, the scaffold was broken into two using the same software to remove potential structural errors in the assembly. The

broken assemblies were concatenated using SALSA2 [59] or 3D-DNA [60], followed by gap filling with the 80X Illumina reads using SOAP-denovo2 Gap-Closer and with the PacBio reads using LR\_GapCloser v1.1 [61]. We observed that 3D-DNA generated a better assembly than SALSA2, as determined by BUSCO analysis (Additional file 1: Table S5). Thus, the assembly from 3D-DNA was used in this study. Gene annotation was transferred from the previously generated assemblies (OGS 6.1 on <https://bipaa.genouest.org/>) to the current assembly using RATT [62].

### Data generation

The samples from Florida were collected from a pasture grass field in Jacksonville (Duvall Co.) and a sweet corn field at Citra (Marion Co.) in Florida (USA) in September 2015 by hand collection. Genomic DNA was extracted from 24 individuals using Dneasy blood and tissues kit, and libraries for Illumina sequencing were generated from 1.0 µg DNA for each sample using NEBNext DNA Library Prep Kit with 300 bp insertion size. Paired-end genome sequencing was performed using Novaseq S6000 with 150 bp reads with 20X coverage for each sample. Adapters in the reads were removed using adapterremoval v2.1.7 [63], followed by mapping the reads against a reference genome with chromosome-sized scaffolds [64], using bowtie2 v2.3.4.1 with—very-sensitive-local preset [65]. Raw Illumina reads from 17 samples from Mississippi (NCBI SRA: PRJNA494340) [8, 40] and 15 samples from Puerto Rico (PRJNA577869) [42] were treated in the same way. Haplotype calling was performed from resulting bam files using GATK v4.1.2.0 [66]. Then, variants were called using GATK v4.1.2.0 [66], and only SNVs were retained. We discarded SNVs if QD is lower than 2.0, FS is higher than 60.0, MQ is lower than 40.0, MQRankSum is lower than -12.5, or ReadPosRankSum is lower than -8.0. The list of samples is available in Additional file 1: Table S6 with detailed information.

### Strain identification

Mitochondrial genomes were assembled and COX1 sequences were extracted using MitoZ [67]. Together with non-FAW COX1 sequences obtained from a previous study [68], a multiple sequence alignment was generated using MUSCLE v3.8.31 [69]. A distance-based phylogenetic tree was reconstructed using FastME v2.1.6 with the F84 evolutionary model [70]. The phylogenetic tree was visualized using iTOL v6 [71]. Then, strains were identified from clades containing samples of which strains were identified from previous studies [40, 42].

The strain was also identified using the TPI gene. We extracted a vcf file containing TPI gene from whole the nuclear genomic vcf file using tabix v1.10.2–3 [72].

Principal component analysis was performed using plink v1.9 [73], and two groups according to the strains were identified. Then, the strain of each sample was identified.

### Population genomics analysis

Weir and Cockerham's  $F_{ST}$  [74] was calculated using VCFtools v0.1.15 [75]. The window size was 500 kb. Statistical genetic differentiation was tested by calculating the proportion of random groups from which the calculated  $F_{ST}$  is higher than the grouping between the corn and the grass groups or between sfC and sfR in the corn group.  $D_{XY}$  in sliding windows was calculated using Dxy [76]. The size of the windows was 500 kb and the step size was 100 kb. Ancestry coefficient analysis was performed using sNMF v1.2 [77]. Selective sweeps were inferred from the composite likelihood of being targeted by selective sweeps from allele frequency spectrums using SweeD v3.2.1 [43]. The grid number per chromosome was 1000. Potential targets of selective sweeps were identified from obvious outliers of composite likelihoods, identified by eyeballing.

Forward simulation was performed using SLiM4 [78] to test increased  $F_{ST}$  and  $D_{XY}$  at divergently selected loci causing reproductive isolation. We chose human conditions to determine the recombination rate ( $1.19 \times 10^{-8}$ ) [79], mutation rate ( $1.2 \times 10^{-8}$ ) [80], and effective population (3100) [81]. Simulated populations include two sister populations (Pop A and Pop B) spitted from a common ancestral population. Unidirectional gene flow was allowed from Pop B to Pop A with the migration rate equal to 0.001 to reflect a situation of restricted gene flow from PopB to Pop A by divergent selection in Pop A. Pop A experienced divergent selection with the selection coefficient equal to 0.05. The length of simulated DNA was 2 Mb, and divergent selection targeted the middle of sequences.  $D_{XY}$  and  $F_{ST}$  were calculated from 20 kb windows. In total, 50 independent forward simulations were performed and calculated  $D_{XY}$  and  $F_{ST}$  were averaged.

### Abbreviations

COX1: Cytochrome c oxidase subunit 1; FAW: Fall armyworm; GD: Genomic differentiation; PCA: Principal component analysis; sfC: *Spodoptera frugiperda*, Corn strain; sfR: *Spodoptera frugiperda*, Rice strain; SNP: Single nucleotide polymorphism; TPI: Triosephosphate Isomerase; USA: United States of America.

### Supplementary Information

The online version contains supplementary material available at <https://doi.org/10.1186/s12862-022-02090-x>.

**Additional file 1: Table S1.** Summary statistics of genome assemblies showing contiguity and correctness of the assemblies (BUSCO) generated in this study and other published assemblies. **Table S2.** The information of each sample used in this study. **Table S3.** Position of targets of selective sweeps specific to the corn or grass group. **Table S5.** Summary statistics

of genome assemblies showing contiguity and correctness of the assemblies generated using SALSA2 and 3D-DNA. **Table S6.** The list of samples used in this study. **Figure S1.** Identification of strains. **Figure S2.** The result of the principal component analysis from whole nuclear genome sequences with the information of sampling locations. **Figure S3.** Ancestry coefficient analysis using the samples from Florida. **Figure S4.** The composite likelihood of being targeted by selection on chromosome 12 and Z chromosomes. **Figure S5.** Forward simulation to test increased  $D_{XY}$  and  $F_{ST}$  at divergently selected loci causing reproductive isolation.

**Additional file 2: Table S4.** The list of genes in the loci with potential selective sweeps.

### Acknowledgements

We are grateful to the genotoul bioinformatics platform Toulouse Occitanie (Bioinfo Genotoul, <https://doi.org/10.15454/1.5572369328961167E12>), GenOuest (<https://www.genouest.org/>), and Bioinformatics Platform for Agroecosystem Arthropods (<https://bipaa.genouest.org/is/>) for providing help and/or computing and/or storage resources.

### Authors' contributions

EF prepared the resequencing dataset and generated Fig. 1. KD contributed to generating Figs. 3 and 4. SG and EA contributed to preparing the resequencing dataset. FL generated the reference genome assembly. RLM, GJK, and NN provided samples used in this study. KN generated Figs. 2, 4, and 5. KN conceived and designed the analyses. All authors participated in writing the paper. All authors read and approved the final manuscript.

### Funding

This work (ID 1702-018) was publicly funded through ANR (the French National Research Agency) under the "Investissements d'avenir" programme with the reference ANR-10-LABX-001-01 Labex Agro and coordinated by Agropolis Fondation under the frame of I-SITE MUSE (ANR-16-IDEX-0006). In addition, the study is supported by Agence Nationale De La Recherche (ORIGINS, ANR-20-CE92-0018-01) and by department of Santé des Plantes et Environnement at Institut national de recherche pour l'agriculture, l'alimentation et l'environnement (NewHost).

### Availability of data and materials

The raw reads of these samples are available from NCBI SRA (PRJNA639296). The reference genome assembly used in this study (ver7) is available at BIPAA ([https://bipaa.genouest.org/sp/spodoptera\\_frugiperda](https://bipaa.genouest.org/sp/spodoptera_frugiperda)). Computer programming scripts used in this study are available on request.

### Declarations

#### Ethics approval and consent to participate

Not relevant.

#### Consent for publication

Not relevant.

#### Competing interests

We have no conflict of interest to declare.

#### Author details

<sup>1</sup>DGIMI, Univ Montpellier, INRAE, Montpellier, France. <sup>2</sup>United States Department of Agriculture, Agricultural Research Service, Gainesville, FL, USA. <sup>3</sup>INRAE, UMR-IGEPP, Bioinformatics Platform for Agroecosystems Arthropods, Campus Beaulieu, 35042 Rennes, France. <sup>4</sup>INRIA, IRISA, GenOuest Core Facility, Campus de Beaulieu, Rennes, France. <sup>5</sup>CBGP, INRAE, CIRAD, IRD, Institut Agro, Univ Montpellier, Montpellier, France.

Received: 6 July 2022 Accepted: 2 November 2022

Published online: 11 November 2022

## References

- Nosil P, Crespi BJ, Sandoval CP. Host-plant adaptation drives the parallel evolution of reproductive isolation. *Nature*. 2002;417:440–3.
- Gloss AD, Abbot P, Whiteman NK. How interactions with plant chemicals shape insect genomes. *Curr Opin Insect Sci*. 2019;36:149–56.
- Simon J-C, d'Alençon E, Guy E, Jacquin-Joly E, Jaquiéry J, Nouhaud P, et al. Genomics of adaptation to host-plants in herbivorous insects. *Brief Funct Genomics*. 2015;14:413–23.
- Fischer HM, Wheat CW, Heckel DG, Vogel H. Evolutionary origins of a novel host plant detoxification gene in butterflies. *Mol Biol Evol*. 2008;25:809–20.
- Smadja C, Shi P, Butlin RK, Robertson HM. Large gene family expansions and adaptive evolution for odorant and gustatory receptors in the Pea Aphid, *Acyrtosiphon pisum*. *Mol Biol Evol*. 2009;26:2073–86.
- Kulmuni J, Wurm Y, Pamilo P. Comparative genomics of chemosensory protein genes reveals rapid evolution and positive selection in ant-specific duplicates. *Heredity*. 2013;110:538–47.
- Cheng T, Wu J, Wu Y, Chilukuri RV, Huang L, Yamamoto K, et al. Genomic adaptation to polyphagy and insecticides in a major East Asian noctuid pest. *Nat Ecol Evol*. 2017;1:1747–56.
- Gouin A, Breteau A, Nam K, Gimenez S, Aury J-M, Duvic B, et al. Two genomes of highly polyphagous lepidopteran pests (*Spodoptera frugiperda*, Noctuidae) with different host-plant ranges. *Sci Rep*. 2017;7:11816.
- Robertson HM, Baits RL, Walden KKO, Wada-Katsumata A, Schal C. Enormous expansion of the chemosensory gene repertoire in the omnivorous German cockroach *Blattella germanica*. *J Exp Zool B Mol Dev Evol*. 2018;330:265–78.
- Meslin C, Mainet P, Montagné N, Robin S, Legeai F, Breteau A, et al. *Spodoptera littoralis* genome mining brings insights on the dynamic of expansion of gustatory receptors in polyphagous noctuidae. *G3 Genes Genet*. 2022;12:jkac131.
- Cates RG. Feeding patterns of monophagous, oligophagous, and polyphagous insect herbivores: the effect of resource abundance and plant chemistry. *Oecologia*. 1980;46:22–31.
- Gavrilets S. Models of speciation: where are we now? *J Hered*. 2014;105:743–55.
- Felsenstein J. Skepticism towards Santa Rosalia, or why are there so few kinds of animals? *Evolution*. 1981;35:124–38.
- Feder JL, Opp SB, Wlazlo B, Reynolds K, Go W, Spisak S. Host fidelity is an effective pre-mating barrier between sympatric races of the apple maggot fly. *Proc Natl Acad Sci U S A*. 1994;91:7990–4.
- Linn CE, Dambroski HR, Feder JL, Berlocher SH, Nojima S, Roelofs WL. Postzygotic isolating factor in sympatric speciation in Ragoletis flies: reduced response of hybrids to parental host-fruit odors. *Proc Natl Acad Sci U S A*. 2004;101:17753–8.
- Gavrilets S. *Fitness landscapes and the origin of species (MPB-41)*. Princeton: Princeton University Press; 2004.
- Servedio MR, Doorn GSV, Kopp M, Frame AM, Nosil P. Magic traits in speciation: 'magic' but not rare? *Trends Ecol Evol*. 2011;26:389–97.
- Goergen G, Kumar PL, Sankung SB, Togola A, Tamò M. First report of outbreaks of the fall armyworm *Spodoptera frugiperda* (J E Smith) (Lepidoptera, Noctuidae), a new alien invasive pest in west and central Africa. *PLoS ONE*. 2016;11: e0165632.
- Diagne C, Turbelin AJ, Moodley D, Novoa A, Leroy B, Angulo E, et al. The economic costs of biological invasions in Africa: a growing but neglected threat? *NeoBiota*. 2021;67:11–51.
- Pashley DP. Host-associated genetic differentiation in fall armyworm (Lepidoptera: Noctuidae): a sibling species complex? *Ann Entomol Soc Am*. 1986;79:898–904.
- Pashley DP, Martin JA. Reproductive incompatibility between host strains of the fall armyworm (Lepidoptera: Noctuidae). *Ann Entomol Soc Am*. 1987;80:731–3.
- Montezano DG, Specht A, Sosa-Gómez DR, Roque-Specht VF, Sousa-Silva JC, de Paula-Moraes SV, et al. Host plants of *Spodoptera frugiperda* (Lepidoptera: Noctuidae) in the Americas. *Afr Entomol*. 2018;26:286–300.
- Powell DP, McMichael M, Silvain J-F. Multilocus genetic analysis of host use, introgression, and speciation in host strains of fall armyworm (Lepidoptera: Noctuidae). *Ann Entomol Soc Am*. 2004;97:1034–44.
- Orsucci M, Moné Y, Audiot P, Gimenez S, Nhim S, Nait-Saidi R, et al. Transcriptional differences between the two host strains of *Spodoptera frugiperda* (Lepidoptera: Noctuidae). *Peer Community J*. 2022;2.
- Hänniger S, Dumas P, Schöfl G, Gebauer-Jung S, Vogel H, Unbehend M, et al. Genetic basis of allochronic differentiation in the fall armyworm. *BMC Evol Biol*. 2017;17:68.
- Schöfl G, Heckel DG, Groot AT. Time-shifted reproductive behaviours among fall armyworm (Noctuidae: *Spodoptera frugiperda*) host strains: evidence for differing modes of inheritance. *J Evol Biol*. 2009;22:1447–59.
- Unbehend M, Hänniger S, Meagher RL, Heckel DG, Groot AT. Pheromonal divergence between two strains of *Spodoptera frugiperda*. *J Chem Ecol*. 2013;39:364–76.
- Unbehend M, Hänniger S, Vásquez GM, Juárez ML, Reisig D, McNeil JN, et al. Geographic variation in sexual attraction of *Spodoptera frugiperda* corn- and rice-strain males to pheromone lures. *PLoS ONE*. 2014;9: e89255.
- Dumas P, Legeai F, Lemaitre C, Scaon E, Orsucci M, Labadie K, et al. *Spodoptera frugiperda* (Lepidoptera: Noctuidae) host-plant variants: two host strains or two distinct species? *Genetica*. 2015;143:305–16.
- Juárez ML, Schöfl G, Vera MT, Vilardi JC, Murúa MG, Willink E, et al. Population structure of *Spodoptera frugiperda* maize and rice host forms in South America: are they host strains? *Entomol Exp Appl*. 2014;152:182–99.
- Kergoat GJ, Prowell DP, Le Ru BP, Mitchell A, Dumas P, Clamens A-L, et al. Disentangling dispersal, vicariance and adaptive radiation patterns: a case study using armyworms in the pest genus *Spodoptera* (Lepidoptera: Noctuidae). *Mol Phylogenet Evol*. 2012;65:855–70.
- Groot AT, Marr M, Heckel DG, Schöfl G. The roles and interactions of reproductive isolation mechanisms in fall armyworm (Lepidoptera: Noctuidae) host strains. *Ecol Entomol*. 2010;35:105–18.
- Pashley DP. Host-associated differentiation in armyworms (Lepidoptera: Noctuidae): an allozymic and mtDNA perspective. In: Loxdale HD, Hollander JD, editors. *Electrophoretic studies on agricultural pests*. Oxford: Clarendon Press; 1989. p. 103–14.
- Dumas P, Barbut J, Ru BL, Silvain J-F, Clamens A-L, d'Alençon E, et al. Phylogenetic molecular species delimitations unravel potential new species in the pest genus *Spodoptera* Guenée, 1852 (Lepidoptera, Noctuidae). *PLoS ONE*. 2015;10: e0122407.
- Nagoshi RN. The fall armyworm Triosephosphate Isomerase (Tpi) gene as a marker of strain identity and interstrain mating. *Ann Entomol Soc Am*. 2010;103:283–92.
- Tessnow AE, Raszczyk TJ, Porter P, Sword GA. Patterns of genomic and allochronic strain divergence in the fall armyworm, *Spodoptera frugiperda* (JE Smith). *Ecol Evol*. 2022;12: e8706.
- Durand K, Yainna S, Nam K. Incipient speciation between host-plant strains in the fall armyworm. *BMC Ecol Evol*. 2022;22:52.
- Schlum KA, Lamour K, de Bortoli CP, Banerjee R, Meagher R, Pereira E, et al. Whole genome comparisons reveal panmixia among fall armyworm (*Spodoptera frugiperda*) from diverse locations. *BMC Genomics*. 2021;22:179.
- Feder JL, Gejji R, Yeaman S, Nosil P. Establishment of new mutations under divergence and genome hitchhiking. *Philos Trans R Soc B Biol Sci*. 2012;367:461–74.
- Nam K, Nhim S, Robin S, Breteau A, Nègre N, d'Alençon E. Positive selection alone is sufficient for whole genome differentiation at the early stage of speciation process in the fall armyworm. *BMC Evol Biol*. 2020;20:152.
- Simão FA, Waterhouse RM, Ioannidis P, Kriventseva EV, Zdobnov EM. BUSCO: assessing genome assembly and annotation completeness with single-copy orthologs. *Bioinformatics*. 2015;31:3210–2.
- Gimenez S, Abdelgaffar H, Goff GL, Hilliou F, Blanco CA, Hänniger S, et al. Adaptation by copy number variation increases insecticide resistance in the fall armyworm. *Commun Biol*. 2020;3:664.
- Pavlidis P, Živković D, Stamatakis A, Alachiotis N. SweeD: likelihood-based detection of selective sweeps in thousands of genomes. *Mol Biol Evol*. 2013;30:2224–34.
- Stephan W. Genetic hitchhiking versus background selection: the controversy and its implications. *Philos Trans R Soc B Biol Sci*. 2010;365:1245–53.
- Charlesworth B. The effects of deleterious mutations on evolution at linked sites. *Genetics*. 2012;190:5–22.

46. Cruickshank TE, Hahn MW. Reanalysis suggests that genomic islands of speciation are due to reduced diversity, not reduced gene flow. *Mol Ecol*. 2014;23:3133–57.
47. Nagoshi RN, Fleischer S, Meagher RL, Hay-Roe M, Khan A, Murúa MG, et al. Fall armyworm migration across the Lesser Antilles and the potential for genetic exchanges between North and South American populations. *PLoS ONE*. 2017;12:e0171743.
48. Martin SH, Dasmahapatra KK, Nadeau NJ, Salazar C, Walters JR, Simpson F, et al. Genome-wide evidence for speciation with gene flow in *Heliconius* butterflies. *Genome Res*. 2013;23:1817–28.
49. Flaxman SM, Wacholder AC, Feder JL, Nosil P. Theoretical models of the influence of genomic architecture on the dynamics of speciation. *Mol Ecol*. 2014;23:4074–88.
50. Barton NH. Gene flow past a cline. *Heredity*. 1979;43:333–9.
51. Barton NH. Multilocus clines. *Evolution*. 1983;37:454–71.
52. Feder JL, Nosil P. The efficacy of divergence hitchhiking in generating genomic islands during ecological speciation. *Evol Int J Org Evol*. 2010;64:1729–47.
53. Nagoshi RN, Koffi D, Agboka K, Adjevi AKM, Meagher RL, Goergen G. The fall armyworm strain associated with most rice, millet, and pasture infestations in the Western Hemisphere is rare or absent in Ghana and Togo. *PLoS ONE*. 2021;16:e0253528.
54. Nagoshi RN, Goergen G, Plessis HD, van den Berg J, Meagher R. Genetic comparisons of fall armyworm populations from 11 countries spanning sub-Saharan Africa provide insights into strain composition and migratory behaviors. *Sci Rep*. 2019;9:8311.
55. Nagoshi RN, Goergen G, Tounou KA, Agboka K, Koffi D, Meagher RL. Analysis of strain distribution, migratory potential, and invasion history of fall armyworm populations in northern Sub-Saharan Africa. *Sci Rep*. 2018;8:3710.
56. Tessnow AE, Gilligan TM, Burkness E, Placidi De Bortoli C, Jurat-Fuentes JL, Porter P, et al. Novel real-time PCR based assays for differentiating fall armyworm strains using four single nucleotide polymorphisms. *PeerJ*. 2021;9:e12195.
57. Grossman SR, Andersen KG, Shlyakhter I, Tabrizi S, Winnicki S, Yen A, et al. Identifying recent adaptations in large-scale genomic data. *Cell*. 2013;152:703–13.
58. Hunt M, Kikuchi T, Sanders M, Newbold C, Berriman M, Otto TD. REAPP: a universal tool for genome assembly evaluation. *Genome Biol*. 2013;14:R47.
59. Ghurye J, Rhie A, Walenz BP, Schmitt A, Selvaraj S, Pop M, et al. Integrating Hi-C links with assembly graphs for chromosome-scale assembly. *PLOS Comput Biol*. 2019;15:e1007273.
60. Dudchenko O, Batra SS, Omer AD, Nyquist SK, Hoeger M, Durand NC, et al. De novo assembly of the *Aedes aegypti* genome using Hi-C yields chromosome-length scaffolds. *Science*. 2017;356:92–5.
61. Xu G-C, Xu T-J, Zhu R, Zhang Y, Li S-Q, Wang H-W, et al. LR\_GapCloser: a tiling path-based gap closer that uses long reads to complete genome assembly. *GigaScience*. 2018;8:giy157.
62. Otto TD, Dillon GP, Degraeve WS, Berriman M. RATT: rapid annotation transfer tool. *Nucleic Acids Res*. 2011;39:e57.
63. Schubert M, Lindgreen S, Orlando L. AdapterRemoval v2: rapid adapter trimming, identification, and read merging. *BMC Res Notes*. 2016;9:88.
64. Yainna S, Tay WT, Fiteni E, Legeai F, Clamens A-L, Gimenez S, et al. Genomic balancing selection is key to the invasive success of the fall armyworm. *bioRxiv*. 2020;2020.06.17.154880.
65. Langmead B, Salzberg SL. Fast gapped-read alignment with Bowtie 2. *Nat Methods*. 2012;9:357–9.
66. McKenna A, Hanna M, Banks E, Sivachenko A, Cibulskis K, Kernytzky A, et al. The genome analysis toolkit: a MapReduce framework for analyzing next-generation DNA sequencing data. *Genome Res*. 2010;20:1297–303.
67. Meng G, Li Y, Yang C, Liu S. MitoZ: a toolkit for animal mitochondrial genome assembly, annotation and visualization. *Nucleic Acids Res*. 2019;47:e63–e63.
68. Kergoat GJ, Goldstein PZ, Le Ru B, Meagher RL, Zilli A, Mitchell A, et al. A novel reference dated phylogeny for the genus *Spodoptera* Guenée (Lepidoptera: Noctuidae: Noctuidae): new insights into the evolution of a pest-rich genus. *Mol Phylogenet Evol*. 2021;161: 107161.
69. Edgar RC. MUSCLE: multiple sequence alignment with high accuracy and high throughput. *Nucleic Acids Res*. 2004;32:1792–7.
70. Lefort V, Desper R, Gascuel O. FastME 2.0: a comprehensive, accurate, and fast distance-based phylogeny inference program. *Mol Biol Evol*. 2015;32:2798–800.
71. Letunic I, Bork P. Interactive Tree Of Life (iTOL) v4: recent updates and new developments. *Nucleic Acids Res*. 2019;47:W256–9.
72. Li H. Tabix: fast retrieval of sequence features from generic TAB-delimited files. *Bioinformatics*. 2011;27:718–9.
73. Rentería ME, Cortes A, Medland SE. Using PLINK for genome-wide association studies (GWAS) and data analysis. In: Gondro C, van der Werf J, Hayes B, editors. *Genome-Wide Association Studies and Genomic Prediction*. Totowa: Humana Press; 2013. p. 193–213.
74. Weir BS, Cockerham CC. Estimating F-statistics for the analysis of population structure. *Evolution*. 1984;38:1358–70.
75. Danecek P, Auton A, Abecasis G, Albers CA, Banks E, DePristo MA, et al. The variant call format and VCFtools. *Bioinformatics*. 2011;27:2156–8.
76. Dxy/Example at master · hugang123/Dxy. GitHub. <https://github.com/hugang123/Dxy>. Accessed 18 May 2022.
77. Fricot E, Mathieu F, Trouillon T, Bouchard G, François O. Fast and efficient estimation of individual ancestry coefficients. *Genetics*. 2014;196:973–83.
78. Messer PW. SLiM: simulating evolution with selection and linkage. *Genetics*. 2013;194:1037–9.
79. Kong A, Gudbjartsson DF, Sainz J, Jonsdottir GM, Gudjonsson SA, Richardsson B, et al. A high-resolution recombination map of the human genome. *Nat Genet*. 2002;31:241–7.
80. Campbell CD, Chong JX, Malig M, Ko A, Dumont BL, Han L, et al. Estimating the human mutation rate using autozygosity in a founder population. *Nat Genet*. 2012;44:1277–81.
81. Tenesa A, Navarro P, Hayes BJ, Duffy DL, Clarke GM, Goddard ME, et al. Recent human effective population size estimated from linkage disequilibrium. *Genome Res*. 2007;17:520–6.

## Publisher's Note

Springer Nature remains neutral with regard to jurisdictional claims in published maps and institutional affiliations.

Ready to submit your research? Choose BMC and benefit from:

- fast, convenient online submission
- thorough peer review by experienced researchers in your field
- rapid publication on acceptance
- support for research data, including large and complex data types
- gold Open Access which fosters wider collaboration and increased citations
- maximum visibility for your research: over 100M website views per year

At BMC, research is always in progress.

Learn more [biomedcentral.com/submissions](https://biomedcentral.com/submissions)

