



HAL
open science

bioRgeo: Bioregionalisation Methods in R

Pierre Denelle, Maxime Lenormand, Boris Leroy

► **To cite this version:**

Pierre Denelle, Maxime Lenormand, Boris Leroy. bioRgeo: Bioregionalisation Methods in R. CCS 2022, Oct 2022, Palma de Mallorca, Spain. . hal-03817581

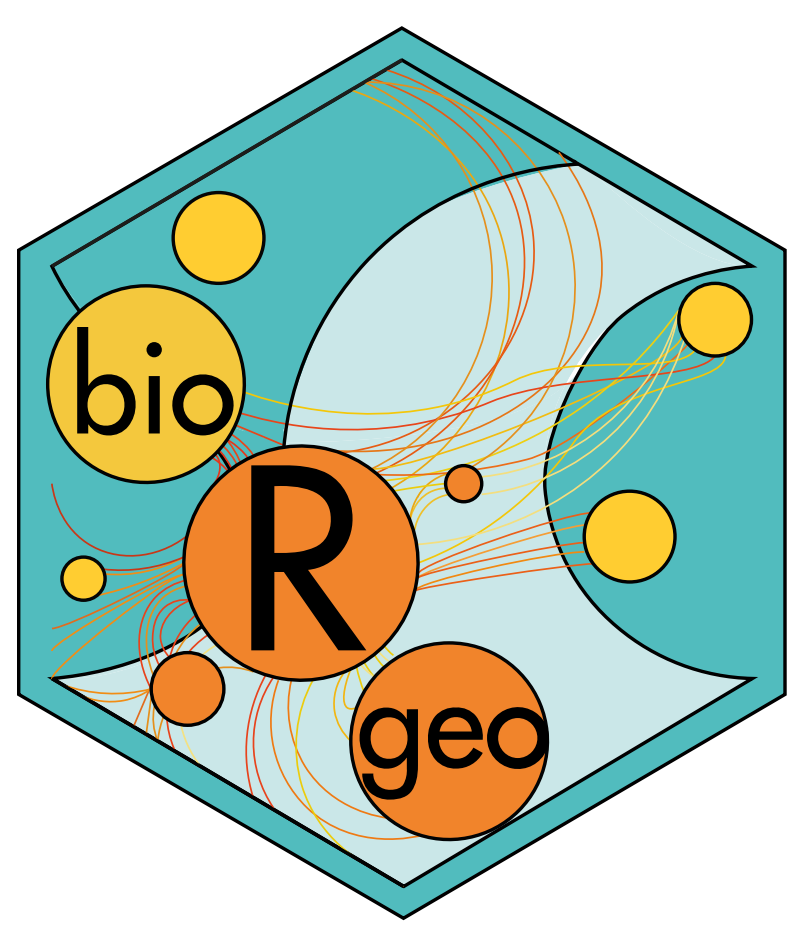
HAL Id: hal-03817581

<https://hal.inrae.fr/hal-03817581v1>

Submitted on 17 Oct 2022

HAL is a multi-disciplinary open access archive for the deposit and dissemination of scientific research documents, whether they are published or not. The documents may come from teaching and research institutions in France or abroad, or from public or private research centers.

L'archive ouverte pluridisciplinaire **HAL**, est destinée au dépôt et à la diffusion de documents scientifiques de niveau recherche, publiés ou non, émanant des établissements d'enseignement et de recherche français ou étrangers, des laboratoires publics ou privés.

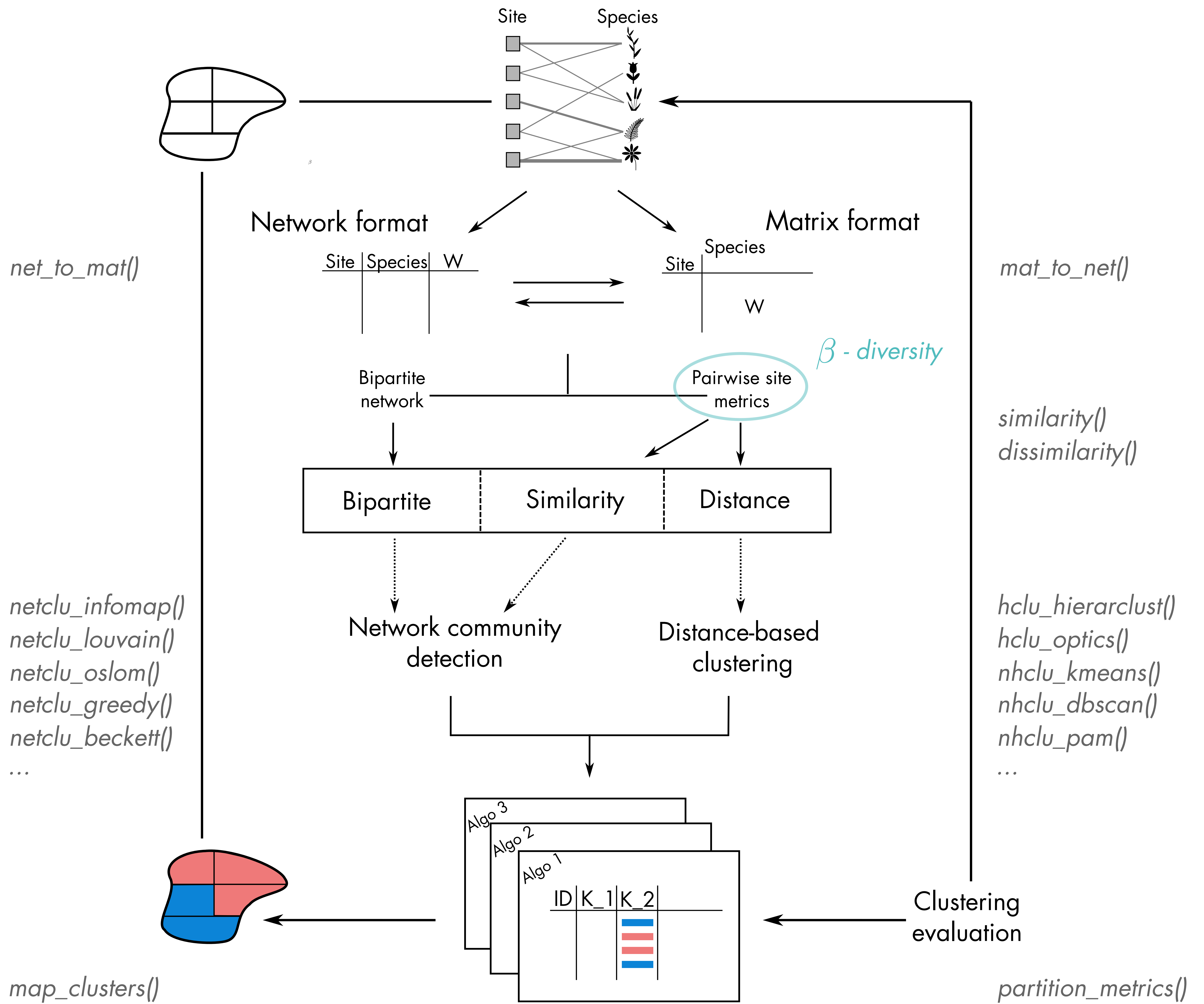


bioRgeo: Bioregionalisation Methods in R

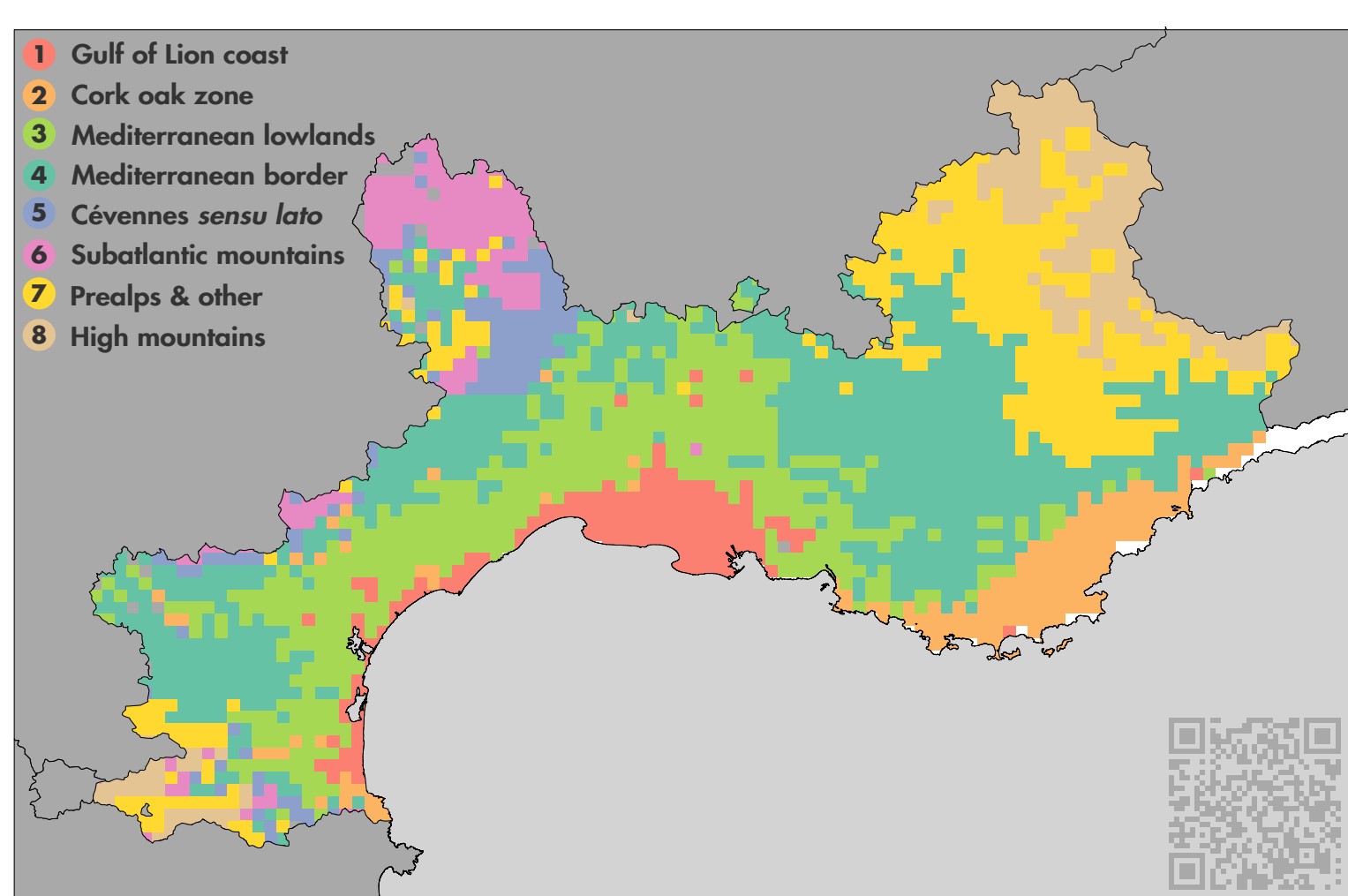
Pierre Denelle, **Maxime Lenormand** & Boris Leroy

maxime.lenormand@inrae.fr

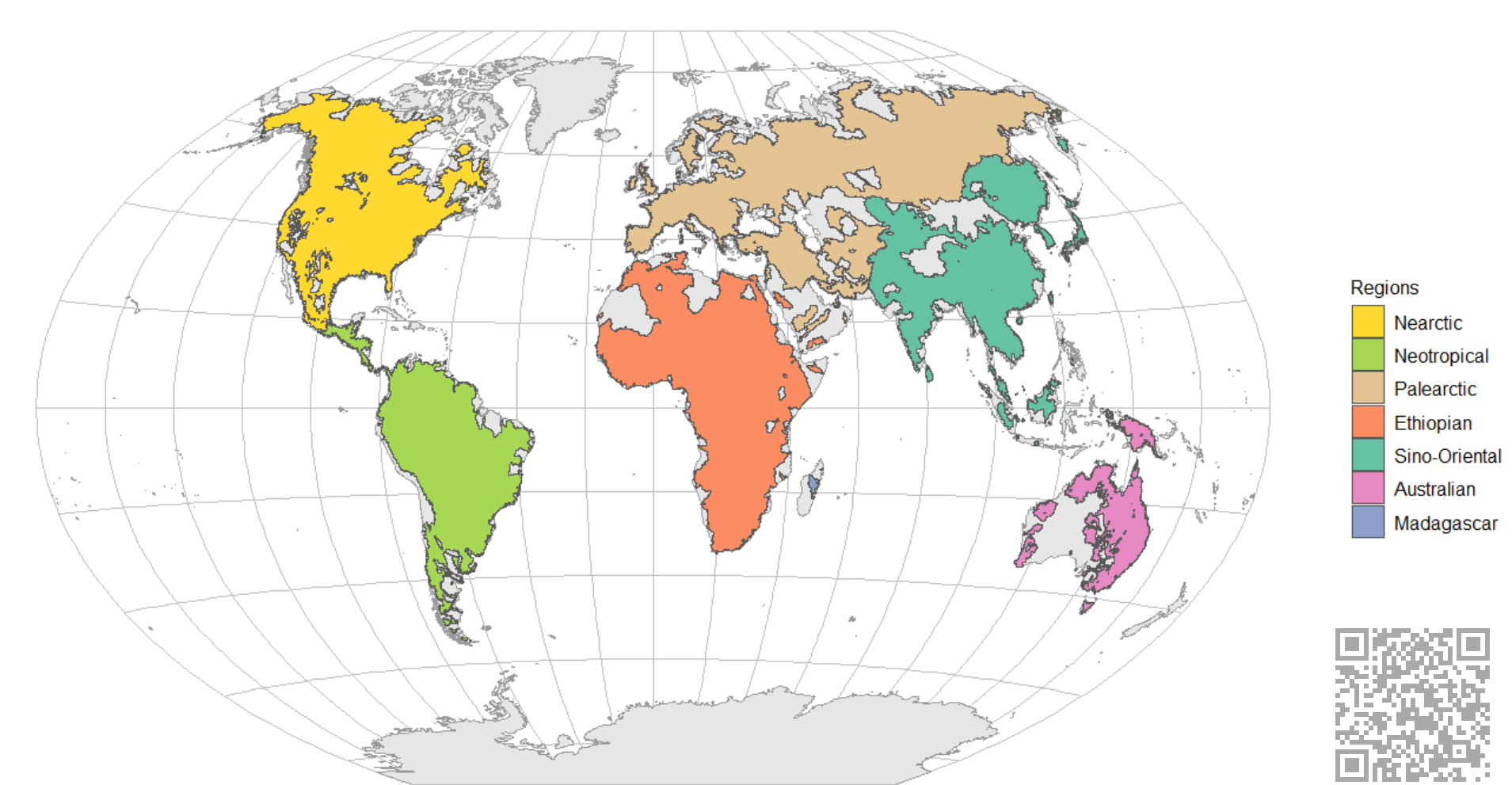
A **bioregion** is an **area** that has characteristic **flora and fauna** and includes one or more ecosystems. To better understand and visualize the **biogeographical structure of a territory**, it is necessary to divide this territory into meaningful and coherent geographical regions. The overall aim is therefore to minimize the heterogeneity in taxonomic composition within regions, while maximizing differences between them. Taking as input species per site information, the **bioRgeo's** package deals with both **network and matrix formats** to identify biogeographical regions with a wide variety of classic (hierarchical and non-hierarchical) clustering techniques and network community detection algorithms.



Examples:



Biogeographical regions of plant species distribution in the Mediterranean region with OSLOM



Global biogeographical region of freshwater fish species with Infomap

