



Design theory to better target public health priorities: An application to Lyme disease in France

Gwenaël Vourc'h, Katherine Un, Elsa Berthet, Pascale Frey-Klett, Pascal Le Masson, Benoit Weil, Olivier Lesens

► To cite this version:

Gwenaël Vourc'h, Katherine Un, Elsa Berthet, Pascale Frey-Klett, Pascal Le Masson, et al.. Design theory to better target public health priorities: An application to Lyme disease in France. *Frontiers in Public Health*, In press, 10.3389/fpubh.2022.980086 . hal-03838586v1

HAL Id: hal-03838586

<https://hal.inrae.fr/hal-03838586v1>

Submitted on 3 Nov 2022 (v1), last revised 7 Nov 2022 (v2)

HAL is a multi-disciplinary open access archive for the deposit and dissemination of scientific research documents, whether they are published or not. The documents may come from teaching and research institutions in France or abroad, or from public or private research centers.

L'archive ouverte pluridisciplinaire **HAL**, est destinée au dépôt et à la diffusion de documents scientifiques de niveau recherche, publiés ou non, émanant des établissements d'enseignement et de recherche français ou étrangers, des laboratoires publics ou privés.



Distributed under a Creative Commons Attribution 4.0 International License

Author's Proof

Before checking your proof, **please see the instructions below**.

- Carefully read the entire proof and mark all corrections in the appropriate place, using the Adobe Reader commenting tools ([Adobe Help](#)).
- Provide your corrections in a single PDF file or post your comments in the Production Forum making sure to reference the relevant query/line number. Upload or post all your corrections directly in the Production Forum to avoid any comments being missed.
- We do not accept corrections in the form of edited manuscripts nor via email.
- Do not provide scanned, handwritten corrections.
- Before you submit your corrections, please make sure that you have checked your proof carefully as once you approve it, you won't be able to make any further corrections.
- To ensure the timely publication of your article, please submit the corrections within 48 hours. After submitting, do not email or query asking for confirmation of receipt.

Do you need help? Visit our [Production Help Center](#) for more information. If you can't find an answer to your question, contact your Production team directly by posting in the Production Forum.

Quick checklist

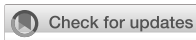
- ☐ **Author names** - Complete, accurate and consistent with your previous publications.
- ☐ **Affiliations** - Complete and accurate. Follow this style when applicable: Department, Institute, University, City, Country.
- ☐ **Tables** - Make sure our formatting style did not change the meaning/alignment of your Tables.
- ☐ **Figures** - Make sure we are using the latest versions.
- ☐ **Funding and Acknowledgments** - List all relevant funders and acknowledgments.
- ☐ **Conflict of Interest** - Ensure any relevant conflicts are declared.
- ☐ **Supplementary files** - Ensure the latest files are published and that no line numbers and tracked changes are visible.
Also, the supplementary files should be cited in the article body text.
- ☐ **Queries** - Reply to all typesetters queries below.
- ☐ **Content** - Read all content carefully and ensure any necessary corrections are made.

Author queries form

Query no.	Details required	Author's response
Q1	Your article has been copyedited to ensure that we publish the highest quality work possible. Please check it carefully to make sure that it is correct and that the meaning was not lost during the process.	
Q2	The citation and surnames of all of the authors have been highlighted. Check that they are correct and consistent with the authors' previous publications, and correct if need be. Please note that this may affect the indexing of your article in repositories such as PubMed.	
Q3	Confirm whether the insertion of the article title is correct.	

Query no.	Details required	Author's response
Q4	<p>If the following authors would like their LOOP profile to be linked to the final published version, please ensure they register with Frontiers (at https://www.frontiersin.org/Registration/Register.aspx) and please provide us with the URLs of their profile link(s) (not email addresses) when submitting the proof corrections. Non-registered authors and authors with profiles set to private mode will have the default profile image displayed. Please note We won't be able to add profile links after publication.</p> <p>"Katherine Un"</p> <p>"Pascal Le Masson"</p> <p>"Benoit Weil"</p> <p>"Olivier Lesens."</p>	
Q5	<p>Confirm that all author affiliations are correctly listed. Note that affiliations are listed sequentially as per journal style and requests for non-sequential listing will not be applied. Note that affiliations should reflect those at the time during which the work was undertaken.</p>	
Q6	<p>Confirm that the email address in your correspondence section is accurate. Please note that any changes to the corresponding authorship would require individual confirmation from all original and added/removed corresponding authors.</p>	
Q7	<p>Confirm that the keywords are correct and keep them to a maximum of eight and a minimum of five. (Note: a keyword can be comprised of one or more words.) Note that we have used the keywords provided at Submission. If this is not the latest version, please let us know.</p>	
Q8	<p>If you decide to use previously published, copyrighted figures in your article, please keep in mind that it is your responsibility, as the author, to obtain the appropriate permissions and licenses and to follow any citation instructions requested by third-party rights holders. If obtaining the reproduction rights involves the payment of a fee, these charges are to be paid by the authors.</p>	
Q9	<p>Check if the section headers (i.e., section leveling) were correctly captured.</p>	
Q10	<p>Ensure that all the figures, tables and captions are correct, and that all figures are of the highest quality/resolution. If needed, please upload improved Figures in the Production Forum. Please note that Figures and Tables must be cited sequentially, as per section 2.2 of the author guidelines.</p>	
Q11	<p>Verify that all the equations and special characters are displayed correctly.</p>	
Q12	<p>Confirm that the Data Availability statement is accurate. Note that we have used the statement provided at Submission. If this is not the latest version, please let us know.</p>	
Q13	<p>If your article requires an Ethics statement, please confirm that the statement in this proof is correct. If this is not the latest version, please provide a revised Ethics statement.</p>	

Query no.	Details required	Author's response
Q14	Confirm that the details in the "Author Contributions" section are correct.	
Q15	Ensure to add all grant numbers and funding information, as after publication this will no longer be possible. All funders should be credited and all grant numbers should be correctly included in this section.	
Q16	<p>Ensure that any supplementary material is correctly published at this link: https://www.frontiersin.org/articles/10.3389/fpubh.2022.980086/full#supplementary-material</p> <p>If the link does not work, you can check the file(s) directly in the production forum; the published supplementary files appear in green. Provide new files if you have any corrections and make sure all Supplementary files are cited. Please also provide captions for these files, if relevant. Frontiers will deposit ALL supplementary files to FigShare and they will receive a DOI. Notify us of any previously deposited material. If the Supplementary Material files contain identifiable images, please keep in mind that it is your responsibility, as the author, to ensure you have permission to use the images in the article. Please check this link for author's responsibility for publication of identifiable images.</p>	
Q17	Confirm if the text included in the Conflict of Interest statement is correct.	
Q18	Please check the clarity of the sentence 'They face the challenge ...'.	
Q19	Provide the city name for the following references. "(24, 87)."	
Q20	Provide the city and publisher name for "(35)."	
Q21	Provide the complete details for the following. "(54, 86)."	
Q22	Provide the doi for "(63)."	
Q23	Provide the volume number and page range for the following reference. "(84, 91)."	



OPEN ACCESS

EDITED BY
Virginie Millien,
McGill University, Canada

REVIEWED BY
Alessandra Luchini,
George Mason University,
United States
Hany M. Elsheikha,
University of Nottingham,
United Kingdom

*CORRESPONDENCE
Olivier Lesens
olesens@chu-clermontferrand.fr

SPECIALTY SECTION
This article was submitted to
Public Health Policy,
a section of the journal
Frontiers in Public Health

RECEIVED 28 June 2022
ACCEPTED 11 October 2022
PUBLISHED xx xx 2022

CITATION
Vourc'h G, Un K, Berthet E,
Frey-Klett P, Le Masson P, Weil B and
Lesens O (2022) Design theory to
better target public health priorities: An
application to Lyme disease in France.
Front. Public Health 10:980086.
doi: 10.3389/fpubh.2022.980086

COPYRIGHT
© 2022 Vourc'h, Un, Berthet,
Frey-Klett, Le Masson, Weil and
Lesens. This is an open-access article
distributed under the terms of the
Creative Commons Attribution License
(CC BY). The use, distribution or
reproduction in other forums is
permitted, provided the original
author(s) and the copyright owner(s)
are credited and that the original
publication in this journal is cited, in
accordance with accepted academic
practice. No use, distribution or
reproduction is permitted which does
not comply with these terms.

Design theory to better target public health priorities: An application to Lyme disease in France

Gwenaél Vourc'h^{1,2}, Katherine Un^{1,2,3}, Elsa Berthet^{4,5,6},
Pascale Frey-Klett⁷, Pascal Le Masson³, Benoit Weil³ and
Olivier Lesens^{8,9*}

¹INRAE, VetAgro Sup, UMR EPIA, Université Clermont Auvergne, Saint Genès Champanelle, France, ²INRAE, VetAgro Sup, UMR EPIA, Université de Lyon, Marcy l'Etoile, France, ³Centre de Gestion Scientifique, i3 UMR CNRS 9217, MINES ParisTech, PSL Research University, Paris, France, ⁴INRAE, AgroParisTech, UMR SADAPT, Université Paris-Saclay, Paris, France, ⁵USC 1339, Centre d'Etudes Biologiques de Chizé, INRAE, Villiers-en-Bois, France, ⁶UMR 7372 Centre d'Études Biologiques de Chizé, CNRS, Univ. La Rochelle, Beauvoir-sur-Niort, France, ⁷US 1371 Laboratory of Excellence ARBRE, INRAE, Champenoux, France, ⁸Service des Maladies Infectieuses et Tropicales CHU, Clermont-Ferrand, France, ⁹UMR 6023 Laboratoire Microorganismes: Génome Environnement (LMGE), Université Clermont Auvergne, Clermont-Ferrand, France

In the context of complex public health challenges led by interdependent changes such as climate change, biodiversity loss, and resistance to treatment, it is important to mobilize methods that guide us to generate innovative interventions in a context of uncertainty and unknown. Here, we mobilized the concept-knowledge (CK) design theory to identify innovative, cross-sectoral, and cross-disciplinary research and design programs that address the challenges posed by tick-borne Lyme disease in France, which is of growing importance in the French public health and healthcare systems. Within the CK methodological framework, we developed an iterative approach based on literature analysis, expert interviews, analysis of active French research projects, and work with CK experts to contribute to design "an action plan against Lyme disease." We produced a CK diagram that highlights innovative concepts that could be addressed in research projects. The outcome is discussed within four areas: (i) effectiveness; (ii) environmental sustainability in prevention actions; (iii) the promotion of constructive involvement of citizens in Lyme challenges; and (iv) the development of care protocols for chronic conditions with an unknown diagnosis. Altogether, our analysis questioned the health targets ranging from population to ecosystem, the citizen involvement, and the patient consideration. This means integrating social and ecological science, as well as the multidisciplinary medical patient journey, from the start. CK theory is a promising framework to assist public health professionals in designing programs for complex yet urgent contexts, where research and data collection are still not sufficient to provide clear guidance.

KEYWORDS

Lyme disease, innovative design, public health prevention, tick-borne diseases, design theories, concept-knowledge, chronic diseases

Introduction

The world is facing many complex and interdependent changes, such as climate change, loss of biodiversity, increased antimicrobial resistance, and higher frequency of outbreak of zoonotic diseases (1–4). Such changes are difficult to fully apprehend since they are both impacted by daily, entrenched human activities as well as environmental entangled factors beyond control by simple measures. The complexity of the issues at stake challenges the nature of public health work, as illustrated by the COVID-19 crisis, which featured uncertain, novel situations, and unprecedented modes of actions. Experts and researchers are urged to develop programs to prevent public health crises.

The current usual framework for building a response to public health crises typically describes a linear path from problem definition, the generation of a set of alternative solutions, the subsequent evaluation of these options, and finally the study and practice of implementation and dissemination. For instance, cost-effectiveness analysis, comparative effectiveness research, and dissemination and implementation sciences have been mobilized (5, 6). Yet, focusing on such approaches entrenches the mind in a set of choices where the objectives, pathways, and options, even if novel, are well identified. They fail to overcome two characteristics that are of particular importance for innovation in complex situations: (i) the automatic use of easily accessible knowledge to solve a problem leading to a cognitive bias called “fixation effect” and constraining the exploration of solutions from a restricted number of categories (7, 8), and (ii) the unknown or ill-characterized aspects regarding the desired objective to reach, the paths to use, the knowledge to mobilize, the organization to be developed, or the actors to involve.

Developing a process to have a systemized, methodic way to generate innovative ideas in a context of uncertainty and unknowns is the core of innovative design. The concept-knowledge (CK) theory is a theory of innovative design (9, 10) that formally distinguishes “knowledge” from “concepts.” Knowledge is considered as ideas and propositions with a logical status (true or false), and concepts as ideas and propositions without logical status (neither true nor false) but that are desirable and not impossible, e.g., “Antibiotics without resistance.” The distinct space between knowledge and concept helps to explicitly and systematically organize the process of exploring innovative ideas. The formalism of CK allows the user to distinguish exploratory pathways based on the spontaneous activation of knowledge (i.e., fixation effects) from exploratory pathways that rely on the activation of less accessible knowledge (outside fixation effects). Once fixation effects are identified, it is possible to develop levers to overcome them and stimulate creativity (11). The diagram structure of concept exploration in CK

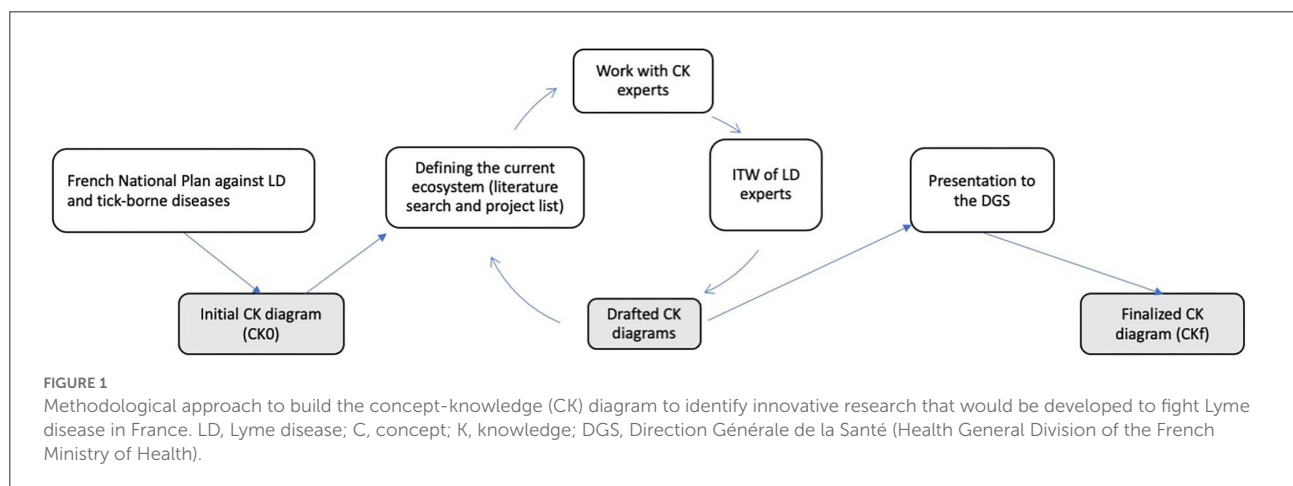
opens unexpected pathways, by requiring the consideration of contrasting ideas, for instance, a path with Property $\ll P \gg$ (e.g., tick bite with *Borrelia* transmission) and a path with Property $\ll \text{non-P} \gg$ (e.g., tick bite with no *Borrelia* transmission).

The concept-knowledge (CK) theory gave birth to a participatory innovative design method called KCP that has been applied in industrial contexts for a long time [Knowledge-Concepts-Proposals, (12)]. The method is based on several collective workshops that bring a large and heterogenous collective of stakeholders to conduct innovative design reasoning together. It has now a broad range of applications, such as the fostering of cross-disciplinary research (13) or promoting agroecological practices (14) or generating alternative in public decision making (15).

In this article, we describe an application of the concept-knowledge (CK) theory (9, 10) to a healthcare and public health issue in order to generate new research questions and identify innovative paths for public actions. We targeted a complex public health challenge, the issue of Lyme disease (LD), a tick-borne infection caused by pathogenic bacteria of the *Borrelia burgdorferi* group. It is currently the most prevalent vector-borne zoonosis in the temperate regions of the Northern hemisphere (16, 17) and imposes a high economic burden (18, 19).

Complexity in LD resides in the uncertainty, unknown, and diverging knowledge as well as in the diversity of stakeholders involved in the prevention, diagnosis, and treatment, all of which put a growing burden on the French public health and healthcare systems (20). Approaches to control tick populations are diverse and include acaricides, landscape management, and control of hosts that feed reproductive adult ticks (21). No human vaccines are yet available (22, 23). LD typically evolves in three stages (24): early localized stage, early disseminated stage, and late stage. The diagnosis is based on the combination of the patient's exposure to risk, clinical symptoms, and serological evidence (25). The infection is treated with a 2- to 4-week course of antibiotics. Post-treatment Lyme disease syndrome (PTLDS) affects an estimated 10% of patients after they have been diagnosed and treated for LD (26, 27). Uncertainties and controversies about LD diagnosis and management have led to alternative theories that promote alternative medical care based more on practical experience than scientific proof. In this context, the chronic stage of the disease has been described and named “Chronic Lyme disease” (CLD). The symptoms included are unspecific (28) and occur at the same rate as in patients who were diagnosed with or self-identify as having CLD than in the average population (29, 30). Some healthcare practitioners prescribe long-term antibiotic courses with no proven efficacy (29).

In 2016, in the face of the disease's growing importance and supported by patient association action and press coverage, the



French government launched a national action plan to improve the prevention, diagnosis, and treatment of LD and other tick-borne diseases (31). A first draft of the plan was elaborated by the French General Directorate for Health. It took into account the position of the High Council of Public Health, and the challenges identified by the service thoughtout discussions that occurred between 2013 and 2015 with medical and animal health experts and researchers, health security agencies, institutions, and associations. The draft was then reviewed by the different actors till it reached a point of stable consensus. The plan targets five axes and 15 actions. In what follows, we present how the CK approach can support public health authorities in moving beyond this plan to identify innovative research questions and key actions against LD, as well as to unearth innovative perspectives both for LD specifically and for public health policy design in general. The outcomes of the process were intended for public health authorities as well as potentially researchers, funding agencies, innovators, citizen association planners, and working on this topic.

Method

General approach

We adapted the KCP approach to the context of the Lyme ecosystem, where participants were low availability, geographically dispersed, and potentially conflicting. We adopted an iterative approach based on knowledge synthesis and exploration with LD experts and CK experts (Figure 1). The whole process was driven by two scientists, one researcher in LD ecology and one researcher in epidemiology and political sciences, both trained in innovative design.

The desirable object we wanted to reach, named the initial concept (C0), was designed as: “An efficient National Plan Against Lyme Disease and other Tick-borne diseases.” This

plan had five objectives and 15 “actions”: 1) improve tick surveillance and improve tools to control the tick population. The following actions were identified: risk mapping, assessing the effectiveness of existing tick population management strategies, and assessing the effectiveness of tick repellants. 2) Improve the surveillance and prevention of tick-borne diseases. The following actions were identified: generalized tick surveillance, public information at trailheads, community education, and updating current public information materials. 3) Improve and standardize patient care. The following actions were identified: a coordinated review of tick-borne disease, a national protocol for the diagnosis and plan of care of patients with tick-borne diseases, and the establishment of criteria for the admission of LD as a recognized chronic illness, along with patient rights and a plan of care. 4) Improve diagnostic tests. The following actions were identified: evaluation of existing over-the-counter diagnostic tests and evaluation of the correct interpretation of diagnostic test results. 5) Leverage current research on tick-borne diseases. The following actions were identified: develop new diagnostic tests, better understand the variety of tick-borne pathogens, and establish a prospective patient cohort.

CK diagrams

The result of the exploration was illustrated by a CK diagram. A CK diagram is the visual representation of the “knowledge” and “concept” spaces used to explore a concept of interest. The space of “knowledge” is used to grow, organize, and visualize an interdisciplinary base of evidence concerning the topic of study. The space of concepts is used to examine the different design possibilities for the desired object based on factors, such as its characteristics, the actors involved, and how they act. To reflect this step-wise inquiry,

concepts are organized in a branching structure. The CK diagram as a whole provides support for the identification of the most promising interventions and for missing pieces of knowledge.

We first created an initial CK diagram (CK0) by analyzing the French Ministry of Health “National Plan Against Lyme Disease” (31). We worked on knowledge associated with the initial concept thanks to the literature search and the analysis of the list of research projects developed on LD ecology, epidemiology, or medicine.

Literature search

For the literature search, we queried PubMed and Web of Knowledge from 2000 to 2017. In terms of prevention, we searched for tools that target ticks, humans, or animal hosts and classified them according to different principles (chemical, biological, genetic, microbiota, immunologic, environmental, behavioral, and pharmaceutic modifications). Regarding the plan of care, we looked for innovative diagnostic, treatment, and care based the terms “Lyme disease,” “Late Lyme disease,” “Post-Treatment Lyme Disease Syndrome,” and “Chronic Lyme Disease.” We questioned whether the obtained knowledge pushed us to re-organize our entire thought process or open-up concept exploration pathway and looked further for articles accordingly if relevant.

Research projects

We further worked on a list of research projects, run by French research teams, that were active in 2016 and 2017 and that addressed LD, prevention, and ecology. We used the list compiled by the French Group on Ticks and Tick-Borne Diseases, which was created in 2004 to bring scientists from different disciplines to improve knowledge on ticks and tick-borne diseases, as well as the Reference Center for *Borrelia* and the interviews. It was cross-checked for completeness against a list provided by the French Ministry of Health. Projects were mapped against the CK diagram to identify potential areas that are under-explored.

Interviews

All the materials (knowledge, project list, identified tools, draft CK diagram) were presented to the LD experts during individual semi-structured interviews. The experts for the interviews were purposefully sampled (32) to maximize the heterogeneity of fields of expertise and reflect the thematic diversity of the challenges posed by LD. We did not receive any refusals. Written informed consent was obtained from the

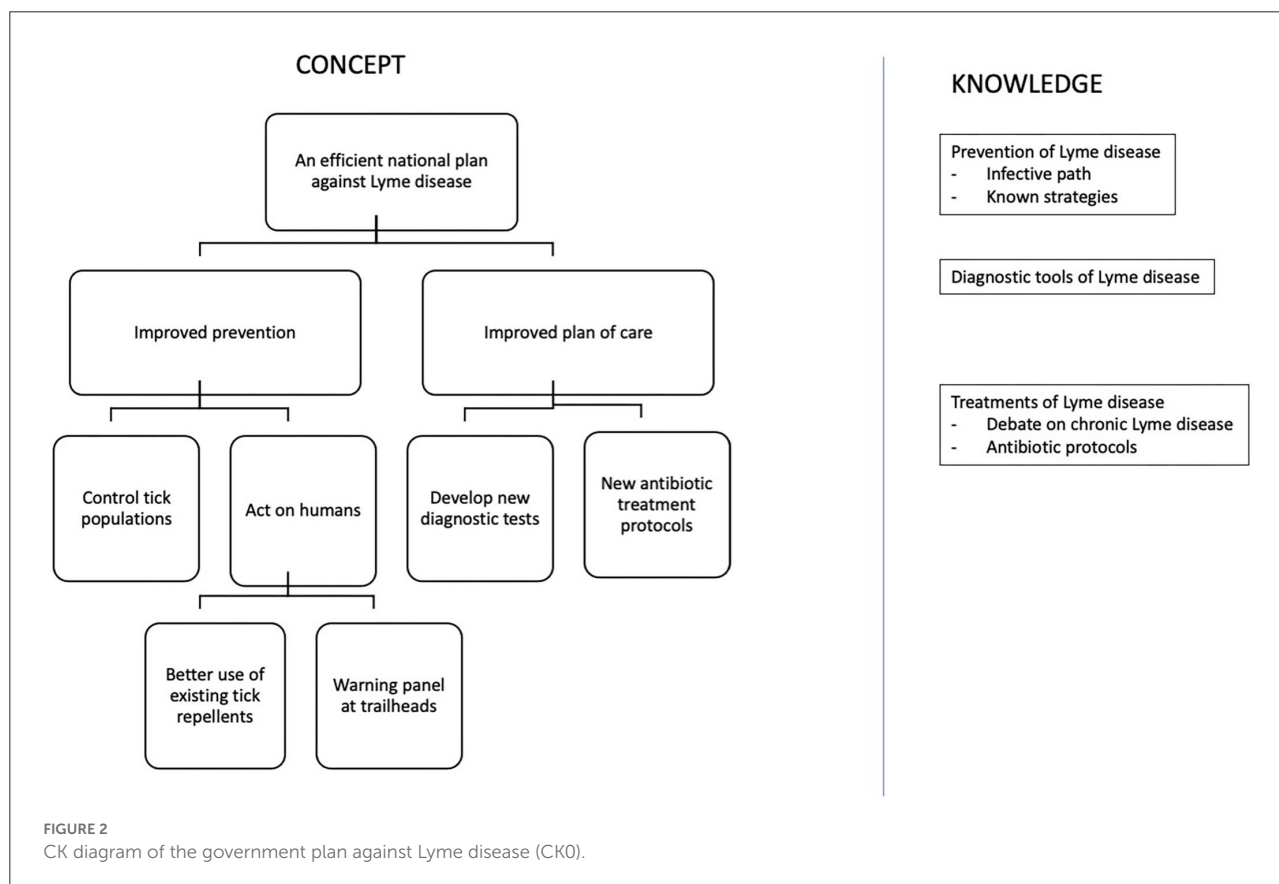
individuals for the publication of any potentially identifiable data included in this article. We conducted 10 expert interviews with specialists in *Borrelia* biology and vaccine ($n = 1$), microbiology ($n = 1$), microbiota ($n = 1$), tick genetics and ecology ($n = 1$), forest ecology ($n = 1$), citizen science ($n = 1$), patient involvement ($n = 1$), infectiology ($n = 1$), public health policy ($n = 2$), in addition with two interviews in expert in innovative design. The key questions for the semi-structured interviews were 1) to complete the knowledge regarding possible and existing tools and the list of research projects, and 2) to expand the concept diagram with the new concepts or re-organize the diagram to better reflect or engender the creative process.

Finalization

We worked back and forth with CK experts and Lyme experts to identify the main concepts and draft a CK diagram. This allowed us to enrich our knowledge base and to work together with CK experts on a more advanced CK diagram. The approach, knowledge, and CK diagram were then presented to the General Health Division of the French Ministry of Health (DGS), which elaborated the national plan against LD as well as to the LD experts individually or during two group meetings. From their feedback and further work with CK experts, we finalized the diagram (CKF). The process was halted after 6 months when the CK diagram was stable through successive steps.

The issue of controllability of design processes is a critical issue, today addressed by advances in design theory (33). The difficulty is in the control of the generative process. Usually, control is focused on the development process or, downstream, on the selection process. It is very difficult to have a “reference” “before” selection/decision that has no bias (or not too strong bias) in the generation process. It was proven that CK theory can provide a reasonable framework to control generativity before selection/decision (34). That is one of the reasons why we relied on design theory as a relevant method to control the generation of alternatives to the question of LD.

We used a qualitative evaluation of V2OR, commonly used in innovative design (35, 36). This method employs a set of four evaluation criteria that are adapted to concept generation: variety, value, originality, and robustness. Variety is obtained by avoiding the proliferation of too many similar ideas. Value refers to the identification of benefits that different actors would get from the innovation. The appearance of surprising properties and the renewal of objects’ identity reflect high originality. Robustness refers to the reliability of concept paths, which can be assessed by determining concept resistance to changes in context and by the quality and quantity of knowledge associated with the concept.



Results

Input

Based on the French Ministry of Health's Action Plan against LD, we constructed the initial diagram CK0. In the concept part, improved prevention was then divided into control action on ticks or humans, whereas an improved plan of care presented developed actions on the new diagnostic test and new antibiotic treatments (see Figure 2).

The list of tools for disease prevention, the analysis of the current diagnostic process, and the knowledge around treatment knowledge obtained from the literature search are shown in Supplementary S1. Specifically, prevention tools concerned chemical use or modification of the genetics, microbiota, immunology, environment, neurological and behavioral properties of the target, as well as antibiotic tools. We modeled the itinerary of patients who questions whether they have Lyme in Figure 3. The final list of research projects that were active in 2017, consolidated by the interviews to address LD in France encompassed 18 projects. Most projects were pluriannual projects, with some having started in 2013 or 2014. Seven of them covered ticks and tick bites, three with *Borrelia*, microbiota, and co-infection in ticks, four with concerned

knowledge, surveillance, and LD diagnosis, and four with vaccine and care questions (see Supplementary S2). Projects on LD were balanced across prevention, diagnosis, and treatment and across each way of answering challenges within those areas of work.

Identification of concepts and evolution of the diagram

Issues in disease prevention

The prevention of a zoonosis is usually modeled according to its infective path, which includes acaricides to control the tick population, warning panels that inform the population of the risk of tick bite, and vaccination to prevent bacterial infection (CK0).

We found that, in general, tools or actions that target humans were either well-developed but not clearly effective or they were in development with the promise of being effective (Figures 4, 5). The protectiveness of non-acaricidal tick repellants is debated and other actions, like the modification of skin microbiota, require further knowledge. While some tools themselves could be effective, they could prove ineffective in practice because they were used inconsistently, including

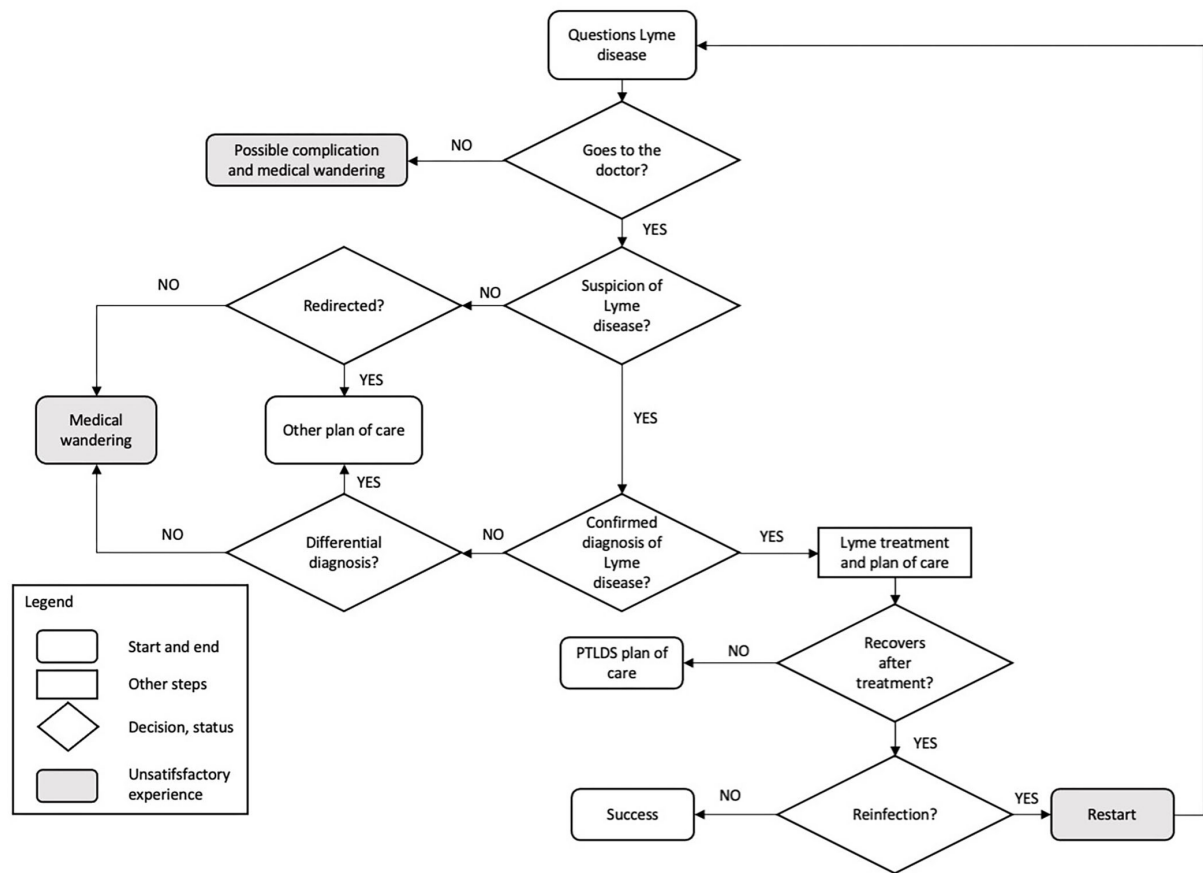


FIGURE 3
Itinerary of patients who questioned whether they have Lyme disease.

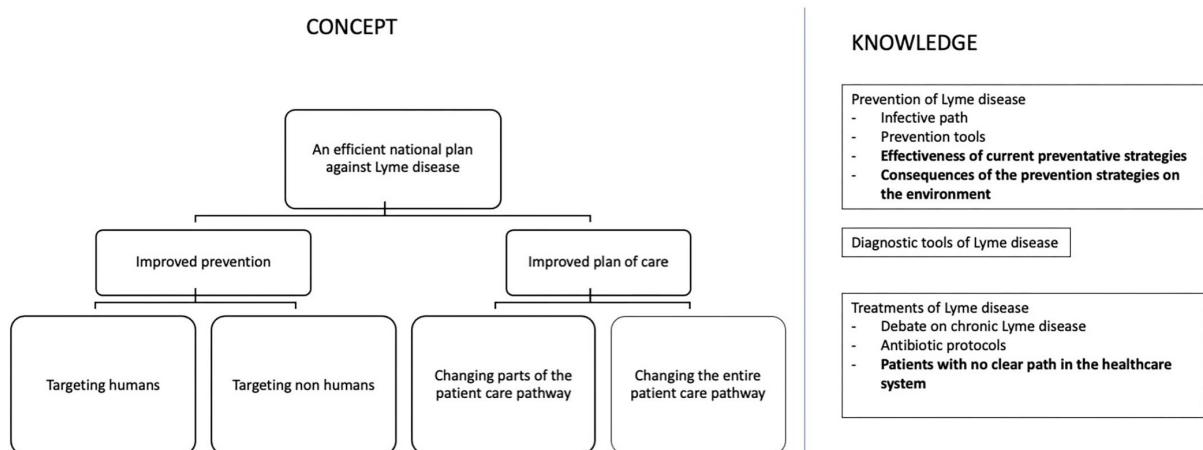
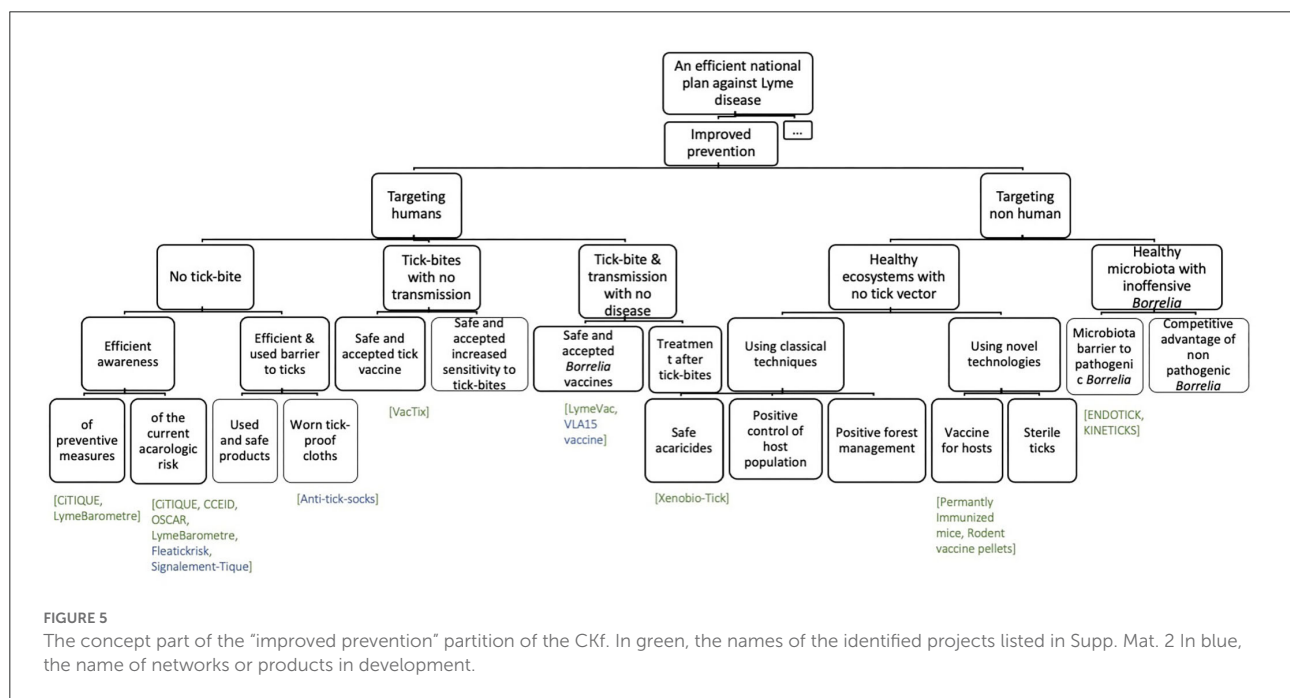


FIGURE 4
First partitions of the final concept diagram (CKf) and main new mobilized knowledge in bold.



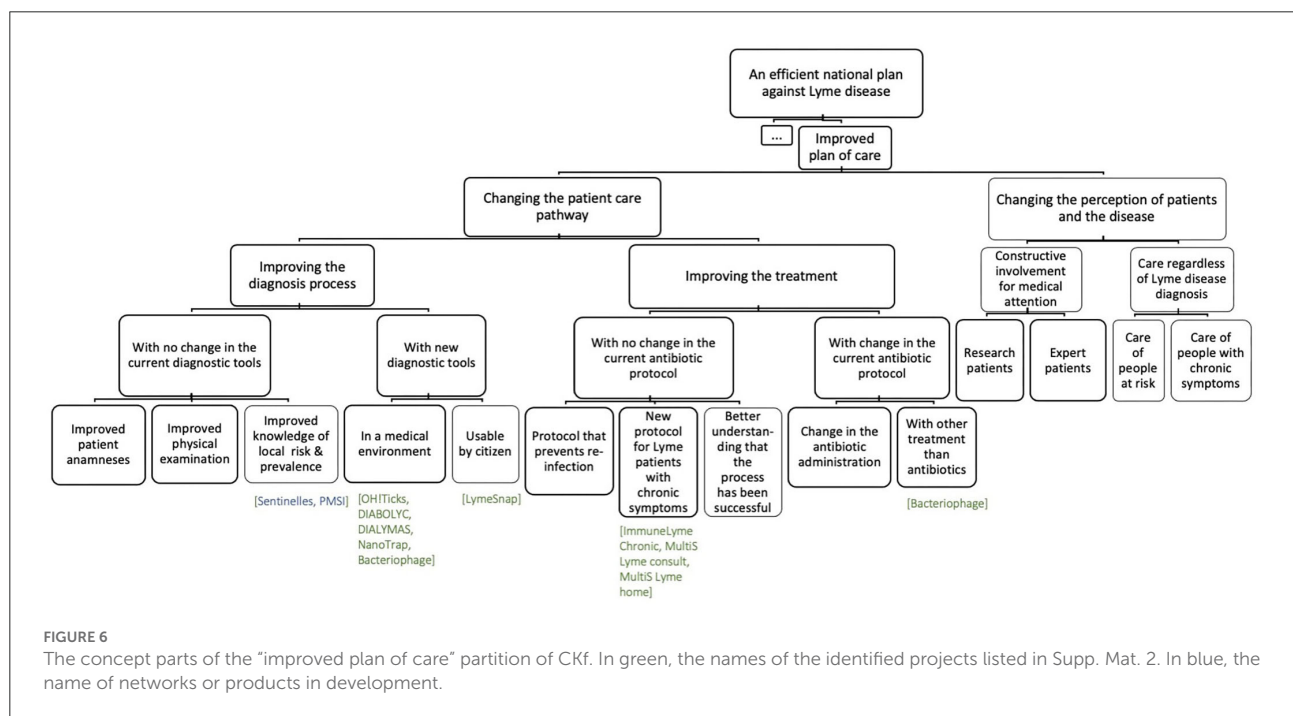
tucking pants into socks, wearing light-colored clothes, and wearing long-sleeved shirts and long pants (37). Acaricide repulsive (38) and information tools on risk knowledge and tick-proof behavior are two examples of effective tools (39). Furthermore, solutions that target humans include vaccines, which are promising both in terms of effectiveness and their minimal impact on the environment. Vaccines that target ticks have the advantage of blocking pathogen transmission (40). The increased sensitivity to tick bite would help to localize the tick earlier and thus remove it before transmission but requires further knowledge. Regarding preventing the disease while transmitting, vaccines against LD will have to address two challenges: efficacy and vaccine hesitancy, which has been a long-standing challenge, the most recent illustration being the COVID-19 vaccine [e.g., (41–43)]. Systemic treatment after tick bites (one single dose of doxycycline) has proved to be effective against *erythema migrans* occurrence (44). However, French guidelines do not recommend antibiotic prophylaxis for the prevention of LD in endemic areas because the number of patients to be treated in order to avoid one case of *erythema migrans* would be as high as 50 (45).

Finally, studies showed that it was possible to map acarological risk at a landscape or regional scale [e.g., (46)]. These studies prompted the development of projects for apps that provide relevant estimates of the density of questing ticks so that people could be made aware of “high-risk” areas.

Actions that target actors other than humans were either effective and had a measurable but negative impact on the environment, or both their effectiveness and impact on the

environment were unclear. The ones that have a known, unwanted impact on the environment are acaricides. Their effectiveness on ticks is demonstrated but difficult to implement over the long term (47–50). Furthermore, they can have sublethal effects on non-target species, such as pollinators or aquatic organisms (51). Landscape management, especially working in forested areas (52–54), and control of deer populations (55) are other techniques but they have to be considered in a whole socio-ecosystem approach (56). The tools that have an unknown impact on LD and/or on the environment include genetically modified hosts and their vaccination (King 2016, Brooks 2016 gray reference in Supplementary S1) and tick pathogens and predators, such as entomopathogenic fungus and wasps [e.g., (57, 58)]. It is unclear that genetically modified rodents would have a significant effect on tick populations, especially if they are released in an open ecosystem with other hosts (59), given that ticks have a much longer lifespan than mosquitoes. The long-term effects of tools acting on other than humans may be politically unacceptable (e.g., culling of deer, deforestation) or very creative and perhaps important to the progress of technology (e.g., permanently immunized mice, GMO ticks), but they are considered impractical due to the difficulty of raising ticks, the important diversity of hosts and bacteria reservoirs and the complexity of the bacteria's ecosystem.

Thus, the CK diagram evolved from CK0 with splitting with action on humans or other than humans and introducing the notion of effectiveness, acceptability, and usage to each (Figure 4). Regarding the actions on non-humans, we introduced the concept of a healthy ecosystem or microbiota to



underline the consideration of the whole system while searching for preventive actions.

Issues of the plan of care

The analysis of the literature and the interviews led us to present the patient journey as different steps that can either lead to successful experience or unsatisfactory experience (Figure 3). It qualified symptoms of CLD as an issue that necessitates attention regardless of the evidence, or lack thereof, of the cause of the symptoms (Figure 6).

We organized the concept diagram with a split between changing the patient care pathway and the perception of patients and disease. The improvement of diagnosis with no changes in the current tools calls for better integration of the different sources of information (physical examination, patient history, or local knowledge of risk). Diagnostic tools for LD include serology, intrathecal synthesis of specific anti-*Borrelia* immunoglobulin, and PCR. The dosage of CXCL13 in the cerebrospinal fluid may be promising but would require subsequent evaluation (60). The use of a prophage-targeting PCR for LB diagnosis is under development (61). In addition to those that are developed for a medical environment, new diagnostic tools could be developed to be usable directly by citizens. Over-the-counter diagnostic test kits have been shown to be inaccurate (62).

Regarding the improvement of treatment, concepts that do not target change in the current antibiotic protocol have been identified along the patient journey. The first concept

was to develop protocols to specifically prevent re-infection. To our knowledge, no study has been undertaken that looks into the rates of re-infection in France or the types of people who experience re-infection. Such information could be used to plan projects that mitigate such risks. A second concept was to develop a multidisciplinary plan of care for patients with long-standing symptoms. A third one would be to improve the patient's understanding of how their own care has been successful. This calls for an improvement in the patient's understanding of their own health status. The other branch regarding the improvement of treatment concerns the testing of new antibiotic protocols or alternative molecules, which include peptides, predatory bacteria, CRISPR, and metals (63), as well as an anti-*Borrelia* phage (64) and characterize their efficacy.

Concepts regarding the change in the perception of patients and disease addressed the knowledge and the diagnosis status. These concepts were linked to increasing the medical attention to patients with programs that foster their knowledge or involvement in the plan of care, such as co-design plan of care protocol and education to bring the patient to a certain level of expertise. The other concepts concern the care of patients with chronic symptoms independently of Lyme diagnosis. This requires points of entry for multidisciplinary, follow-up, and long-term care.

V2OR criteria

The set of concepts that emerged from the analysis demonstrated a high level of variety because they covered the

whole CK diagram. Variety also manifested itself in the cross-disciplinary nature of many concepts. For instance, the concepts of effectiveness in preventive actions and health ecosystems require the mobilization of several disciplines. The innovation design process gets most of its value from presenting different ideas based on different disciplines toward a common goal. Thus, it can help different actors build prospective plans of actions. As for originality, few propositions questioned the identity of objects. For instance, the concept of improving the patient's condition regardless of the Lyme diagnosis questions the patient's identity. Indeed, the consideration as the patient does not rely on objective tests, but rather on the overall conditions. The involvement of citizens questions their role as experts or citizen scientists. As well, the importance to consider the impacts of preventive measures on the environment is questioned at what level in a socio-ecosystem a health common goal should be defined. The robustness of the output of the design process is the most difficult to objectify. It is likely that introducing new knowledge (e.g., new health community prevention approach, new vaccine) or shifting ecological conditions (e.g., accentuated climate change, evolution of bacteria or ticks) would modify outcomes. That said, what is proposed in the current CK diagram would remain relevant.

Discussion

Four main areas

In the context of ever more complex public health challenges, innovation and multidisciplinary collaboration are desirable but often difficult to achieve. We mobilized CK design theory to identify innovative, cross-sectoral, and cross-disciplinary actions or research questions that address the challenges posed by LD in France. Based on the initial concept of an "efficient plan against LD," we separated strategies that belong to the realm of prevention and those that belong to the realm of the plan of care, as for the initial national plan of 2016. The analysis of the CK diagram highlighted four main areas: (i) the integration of effectiveness in prevention actions; (ii) the integration of environmental sustainability in prevention actions; (iii) the promotion of constructive involvement of citizens in Lyme challenges; and (iv) the development of care protocols for chronic conditions with an unknown diagnosis.

(i) The integration of effectiveness in actions against LD

Our analysis of the prevention partition showed that many research projects addressed prevention, from action on the environment to vaccines. One step to make them more operational would be to improve the integration of effectiveness in the concepts, i.e., availability, acceptability, use, and efficacy of the proposed concept. This requires understanding how citizens get access to information, integrate it, and modify their

behavior (65, 66), such as what has been developed for malaria prevention where for instance, an approach combining mass and interpersonal methods result in the positive improvement of prevention [e.g., (67, 68)]. Septfons et al. (69) reported a trend toward increased knowledge and awareness of tick bites and LD from 2016 to 2019 in France. Indeed, in 2016 66% of participants had heard about LD. They were 79% in 2019. In 2016, 29% of them considered themselves well-informed. The percentage grows up to 41% in 2019. An illustration from our work of a concept that better-highlighted behavior change would be "Installing warning panels at trailheads associated with an effective strategy to make sure that people can follow the recommendations." This calls for adapting tools to citizen use and understanding the way they perceive their health (70) by associating acarologists with social scientists and ergonomists. Another example would be the development of tick-proof clothes to make sure that they are worn, which suggests possible innovative private-public partnerships. The last example concerned the acarological risk. The information actually depends mainly on research initiatives that model and map acarological risk. From a public policy perspective, France is lacking a national surveillance policy of acarological risk that integrates long-term monitoring, the combination of various sources of information (e.g., citizen data, modeling, active sampling), as well as the needs and expectations of the end-users (stakeholders, citizens, researchers, etc.) (71, 72). The surveillance associated with spatial decision instruments could provide enhanced support for decision-making and management. Such tools have been successfully used for malaria elimination in a variety of countries (73).

With regards to the plan of care, bringing to the patient a better comprehension of their health status would help them to present quicker to the doctor and to better understand the course of the plan of care. Indeed, there is a disruption between the medical and the patient's point of view regarding their health status, especially with chronic symptoms (74). Tools focusing on the knowledge of the patient's own health status are already developed with diseases that require self-care on the part of the patient (e.g., patient decision cards, biofeedback, smartphone apps...) (75, 76). Some tools are being developed to identify *erythema migrans* from pictures based on deep learning approaches (77). They face the challenge of taking into account skin color, picture quality, and finding the right decision criteria for informing end-users of a potential risk (e.g., which likelihood of *erythema migrans* to consider? How to consider the information of risk exposure). They may provide means for patients to report information when consulting doctors (appropriate picture, indication of time and location, etc.) (78). A better knowledge of health status also leads to educating patients in treatment for LD about risk factors and prevention (79).

(ii) The integration of environmental sustainability in prevention actions on LD

The analysis of prevention targeting other living beings called for better integration of ecosystem sustainability from a One Health perspective. The concept is not so much to outline the importance of considering animal reservoirs (80), but rather to move our common goal of prevention from Lyme prevention to a healthy sustainable ecosystem for all living organisms (81). It calls for cross-sectoral and multidisciplinary approaches (82) and leads to research questions regarding the relationship between biodiversity and health at the level of ecosystem or microbiota (83–85). One could imagine designing a “healthy biodiverse territory with no tick-borne transmission” that would be a concrete field laboratory. It could be, for instance, a delimited area, which would concentrate all knowledge and actions on Lyme prevention and plan of care (information, study of efficacy, ecosystem management, diverse prevention tools, etc.). This would require multidisciplinary and multisectoral efforts.

(iii) Promotion of the constructive involvement of citizens in Lyme challenges

Citizens are key in the LD ecosystems. They can be involved in data collection in citizen science programs (e.g., CitiQUE) to patient organizations that advocate for a different plan of care. Citizen knowledge of LD prevention and care can modify their own behavior but also that of their relatives because people who are sick are very sensitive to advice from relatives. Our work highlights citizen involvement as a tool to move from confrontation to cooperation (86, 87). From data collection to the co-design of prevention or plan of care with expert patients, all these examples of citizen involvement open a new realm of questions that are particularly important in health sciences. We need to further understand the conditions that favor co-design, the learning steps citizen, and how different types of knowledge can be positively combined.

(iv) The development of care protocols for chronic conditions with unknown diagnosis

In 2017, the mindset stated that patients were either positive or negative for LD. Patients who were positive got treatment. Patients who were negative got shuttled into a different part of the healthcare system. This dichotomy breaks down, particularly for people identified at risk, whose infectious status is yet unknown, and people who are clearly unwell with chronic symptoms but do not clearly have LD and do not have a clear path in the healthcare system. As for other chronic conditions for which the physio-pathological pathway is unknown and the plan of care not clearly defined, such as fibromyalgia, chronic fatigue, or long COVID-19, patients with a “diagnosis” of Chronic LD suffer from medical wandering that leads to poor management of the disease, psychological distress, and increased cost of healthcare (88–91). Projects that look at the concept of improvement of patient conditions regardless of the LD diagnosis might draw from previous research in these areas. These projects must be cost-effective for the healthcare system and affordable for the patients (92).

The creation of five Tick-Borne Diseases Reference Centers (TBD-RC) in France in 2019 was a step forward in this direction. A multidisciplinary team of experts makes it possible to establish a differential diagnosis and to propose adapted care. Somatoform disorders can benefit from psychological support and adapted rehabilitation. In this context, Raffetin et al. (93) outlined that 70% of the 569 patients who consulted at the center were finally diagnosed with another pathology. Thus, the TBD-RC received a majority of patients who did not have LD.

Developing care protocols for chronic conditions regardless of Lyme diagnosis requires a change in the perception and action of both patients and physicians. The patients need to be able to reconsider the diagnosis (CLD) in which they sometimes strongly believe. Despite the lack of a diagnosis, physicians need to accept and recognize the patient's suffering. It means moving from a disease approach to a syndromic approach, related or not to tick bites. Physicians need improved support to manage this type of syndrome, which is surrounded by unknowns and uncertainties with low scientific evidence. For that purpose, care protocols should be proposed based on multidisciplinary approaches, research protocols, and allopathic and non-allopathic approaches such as rehabilitation.

Limitations of the study

Our application of CK theory is not an evidence-based and data-driven demonstration of the value of CK theory as a creative tool in the design of public health programs, but rather a pilot application to illustrate the possibilities in a given and limited context.

The distinction between prevention and plan of care stayed stable through successive steps of our study, perhaps pointing to a cultural bias in the literature or for the meta-syntheses and in the sample of interviewees. The CK diagram and design process could be completed by another branch “Simultaneous prevention and plan of care.” Some ideas that may be fostered by considering this point of view have already been highlighted, such as strategies for systemic treatment after tick bite (44) and the strategies to mitigate re-infection. Questioning the dichotomy between prevention and treatment could have value beyond LD as it touches on broad public health and healthcare challenges of improving the affordability, efficacy, and quality in the care of patients with chronic disease or mental health issues. The scope of our study and our access to new expertise limited our ability to look into these concepts in an in-depth manner. Future applications of CK analysis in the public health field might address this possible bias by including dedicated literature and experts in processes.

The number of experts we interviewed was relatively limited but we chose to cross-analyze the output of the expert interviews with the literature and the project analysis. Thanks

to our iterative process, we were able to consolidate and complement the information from the different sources and stop the process when the CK diagram was stable with no major new information (94). Nevertheless, exploring more deeply the proposed solutions can require the mobilizing of new experts who can expand the available knowledge.

We reached what we could call a referential of concepts that address LD issues. We did not develop to the project phase, where concepts are selected for their potential interest and the means needed to address the selected concepts are identified, i.e., which actors should be involved, what steps should be planned, what resources are needed, what research would be relevant, etc. At this stage, the feasibility of each path could not be proven, i.e., solutions that might call for additional work. The same is valid for the translational potential: the “market” or “user value” could not be proven, and at the same time it was also impossible to prove that there was no value.

Altogether, the type of work we conducted could contribute to the cost/benefit analysis of public health and medical measures in several ways. First, for each innovation path, it is possible to have a specific cost/benefit analysis adapted to the specific proposed innovation. Second, this type of analysis can underline new possible benefit criteria or cost criteria that should be taken into account in future. For instance, this work highlighted the potential benefit of a database of well-recorded images of *erythema migrans* and their evolution over time. Third, the cost/benefit analysis of the study itself could be estimated: the cost is non-negligible (e.g., several of man.month) and the benefit has to be estimated in terms of (i) a clearer picture of the innovation field (variety of approaches, of expertise,...) that encompasses more directions than the National Plan against LD, (ii) capacity to monitor the variety of projects, led by a variety of institutional actors (research institutes, companies, practitioners...), and (iii) identification of paths that are orphan of any exploration and design efforts and yet might be relevant for the society. Although difficult to quantify, the overall benefit seems high and obtained at a relatively limited cost.

Perspective-conclusion

Two reports elaborated by groups of French parliamentarians were published in 2021. They addressed the funding and efficacy of, for one the action plan against LD and for the other the plan of care for patients (95, 96). They pointed out the necessity to continue the actions of the 2016 plan with regards to information campaigns, awareness of acarological risk, and tick surveillance; the need to structure the patient journey from the generalist to the TBD-RC; and the need to increase fundamental knowledge on tick-borne and chronic symptoms associated with Lyme. Both reports highlighted the

necessity for increased funding and inter-sectoral action. Our work goes beyond these recommendations toward a broader perspective together with a better understanding of the link between the different concepts. From a design point of view, by working on topics while freeing ourselves from fixation and known contention, we changed the identity of some objects, such as the patient identity, the citizen involvement, and health common goal (from population health to ecosystem health). This means integrating ecological sciences and humanities from the start as well as valuing a multidisciplinary approach to patients' medical journey. The process could be further pursued to help guide a group learning process that made intentional space for expert and local knowledge (15). CK theory could be a promising frame to assist public health professionals design programs in complex, yet urgent contexts where research and data collection are not yet sufficient to provide clear guidance.

Data availability statement

The raw data supporting the conclusions of this article will be made available by the authors, without undue reservation.

Ethics statement

Ethical review and approval was not required for the study on human participants in accordance with the local legislation and institutional requirements. The patients/participants provided their written informed consent to participate in this study.

Author contributions

GV, PL, BW, and OL designed the study. KU did the literature search, the interviews and the work on the design diagrams. GV, KU, EB, PF-K, PL, BW, and OL worked on the analyzes and interpretation of the study. GV and KU drafted the manuscript. All authors reviewed the manuscript.

Funding

The research position of KU was founded by the Chair of Design Theory and Methods for Innovation.

Acknowledgments

We would like to thank the Chair of Design Theory and Methods for Innovation at Mines ParisTech for supporting the

contract of KU and INRAE for providing support. We would like to extend our gratitude to the Tique et Maladies à Tiques work group for allowing us to connect with experts in the field. Special thanks for their valuable input as experts to Jean Beytout, Sarah Bonnet, Nathalie Boulanger, Anne Colin, Jean-François Cosson, Pascal Le Masson, Sara Moutailler, Manuel Nicolas, Christine Ortmans, Olivier Plantard, Benoit Weil, and Bernadette Worms.

Conflict of interest

The authors declare that the research was conducted in the absence of any commercial or financial relationships that could be construed as a potential conflict of interest.

References

- Khan MD, Vu HHT, Lai QT, Ahn JW. Aggravation of human diseases and climate change nexus. *Int J Environ Res Public Health*. (2019) 16:2799. doi: 10.3390/ijerph16152799
- ECDC. *Surveillance of Antimicrobial Resistance in Europe Annual Report of the European Antimicrobial Resistance Surveillance Network (Ears-Net) 2017* (2018).
- Cardinale BJ, Duffy JE, Gonzalez A, Hooper DU, Perrings C, Venail P, et al. Biodiversity loss and its impact on humanity. *Nature*. (2012) 486:59–67. doi: 10.1038/nature11148
- Morand S. Emerging diseases, livestock expansion and biodiversity loss are positively related at global scale. *Biol Conserv*. (2020) 248:108707. doi: 10.1016/j.biocon.2020.108707
- Glasgow RE, Vinson C, Chambers D, Khoury MJ, Kaplan RM, Hunter C. National institutes of health approaches to dissemination and implementation science: current and future directions. *Am J Public Health*. (2012) 102:1274–81. doi: 10.2105/AJPH.2012.300755
- Institute-of-Medicine. *Initial National Priorities for Comparative Effectiveness Research*. Washington DC: National Academies Press (2009).
- Agogue M, Le Masson P, Robinson DKR. Orphan innovation, or when path-creation goes stale: missing entrepreneurs or missing innovation? *Technol Anal Strategic Manag*. (2012) 24:603–16. doi: 10.1080/09537325.2012.693672
- Crilly N. Fixation and creativity in concept development: the attitudes and practices of expert designers. *Design Studies*. (2015) 38:54–91. doi: 10.1016/j.destud.2015.01.002
- Hatchuel A, Weil B, editors. *A New Approach to Innovative Design: An Introduction to C-K Theory*. In: *Proceedings of the International Conference on Engineering Design (ICED)*. Stockholm (2003).
- Hatchuel A, Weil B. C-K design theory : an advanced formulation. *Res Eng Design*. (2009) 19:181–92. doi: 10.1007/s00163-008-0043-4
- Ezzat H, Camarda A, Cassotti M, Agogue M, Houdé O, Weil B, et al. How minimal executive feedback influences creative idea generation. *PLoS ONE*. (2017) 12:e0180458. doi: 10.1371/journal.pone.0180458
- Hooge S, Béjean M, Arnoux F. Organising for radical innovation: the benefits of the interplay between cognitive and organisational processes. *Int J Innovat Manag*. (2016) 20:33. doi: 10.1142/S1363919616400041
- Vourc'h G, Juliette B, Ducrot C, Cosson J-F, Le Masson P, Weil B. Using design theory to foster innovative cross-disciplinary research: lessons learned from a research network focused on antimicrobial use and animal microbes' resistance to antimicrobials. *Vet Animal Sci*. (2018) 6:12–20. doi: 10.1016/j.vas.2018.04.001
- Berthet ETA, Barnaud C, Girard N, Labatut J, Martin G. How to foster agroecological innovations? A comparison of participatory design methods. *J Environ Plan Manag*. (2015) 59:280–301. doi: 10.1080/09640568.2015.1009627
- Pluchinotta I, Kazakci AO, Giordano R, Tsoukià A. Design theory for generating alternatives in public decision making processes. *Group Decis Negotiat*. (2019) 28:341–75. doi: 10.1007/s10726-018-09610-5

Publisher's note

All claims expressed in this article are solely those of the authors and do not necessarily represent those of their affiliated organizations, or those of the publisher, the editors and the reviewers. Any product that may be evaluated in this article, or claim that may be made by its manufacturer, is not guaranteed or endorsed by the publisher.

Supplementary material

The Supplementary Material for this article can be found online at: <https://www.frontiersin.org/articles/10.3389/fpubh.2022.980086/full#supplementary-material>

- Kugeler KJ, Schwartz AM, Delorey MJ, Mead PS, Hinckley AF. Estimating the frequency of lyme disease diagnoses, United States, 2010–2018. *Emerg Infect Dis*. (2021) 27:616–9. doi: 10.3201/eid2702.202731
- Sentinelles. *Bilan Annuel Du Réseau Sentinelles*. Institut Pierre Louis d'Epidémiologie et de Santé Publique, UMR S 1136, Institut National de la Santé et de la Recherche Médicale (INSERM), Sorbonne Université (2020).
- Mac S, da Silva SR, Sander B. The economic burden of lyme disease and the cost-effectiveness of lyme disease interventions: a scoping review. *PLoS ONE*. (2019) 14:e0210280. doi: 10.1371/journal.pone.0210280
- van den Wijngaard CC, Hofhuis A, Wong A, Harms MG, de Wit GA, Lugner AK, et al. The cost of lyme borreliosis. *Eur J Public Health*. (2017) 27:538–47. doi: 10.1093/eurpub/ckw269
- Pascal C, Arquembourg J, Vorilhon P, Lesens O. Emergence of lyme disease as a social problem: analysis of discourse using the media content. *Eur J Public Health*. (2019) 30:475–81. doi: 10.1093/eurpub/ckz198
- Cerny J, Lynn G, Hrnkova J, Golovchenko M, Rudenko N, Grubhoffer L. Management options for *Ixodes ricinus*-associated pathogens: a review of prevention strategies. *Int J Environ Res Public Health*. (2020) 17:1830. doi: 10.3390/ijerph17061830
- Shaffer L. Inner workings: lyme disease vaccines face familiar challenges, both societal and scientific. *Proc Natl Acad Sci USA*. (2019) 116:19214–7. doi: 10.1073/pnas.1913923116
- Comstedt P, Schuler W, Meinke A, Lundberg U. The novel lyme borreliosis vaccine V1a15 shows broad protection against borrelia species expressing six different ospa serotypes. *PLoS ONE*. (2017) 12:e0184357. doi: 10.1371/journal.pone.0184357
- Iliopoulou BP, Huber BT. Lyme disease: symptoms, diagnosis and treatment. In: A Holmgren GB, editor. *Handbook of Disease Outbreak: Prevention, Detection and Control. Public Health in the 21st Century*. (2010). p. 415–22.
- Baker PJ. Is it possible to make a correct diagnosis of lyme disease on symptoms alone? Review of key issues and public health implications. *Am J Med*. (2019) 132:1148–52. doi: 10.1016/j.amjmed.2019.04.001
- Marques A. Chronic lyme disease: an appraisal. *Infect Dis Clin North Am*. (2008) 22:341–60. doi: 10.1016/j.idc.2007.12.011
- Adrian ER, Aucott J, Lemke KW, Weiner JP. Health care costs, utilization and patterns of care following lyme disease. *PLoS ONE*. (2015) 10:e0116767. doi: 10.1371/journal.pone.0116767
- Horowitz R. *How Can I Get Better?: An Action Plan for Treating Resistant Lyme & Chronic Disease*. 1 ed. New York City, NY: St. Martin's Griffin (2017).
- Lantos P. Chronic Lyme disease. *Infect Dis Clin*. (2015) 2:325–40. doi: 10.1016/j.idc.2015.02.006
- Nilsson K, Skoog E, Jones V, Labbe Sandelin L, Bjorling C, Fridenstrom E, et al. A comprehensive clinical and laboratory evaluation of 224 patients with

- persistent symptoms attributed to presumed Tick-Bite exposure. *PLoS ONE*. (2021) 16:e0247384. doi: 10.1371/journal.pone.0247384
31. MASS. *Plan National De Prévention Et De Lutte Contre La Maladie De Lyme Et Les Maladies Transmissibles Par Les Tiques*. Ministère des Affaires Sociales et de la Santé-République Française (2016).
32. Palinkas LA, Horwitz SM, Green CA, Wisdom JP, Duan N, Hoagwood K. Purposeful sampling for qualitative data collection and analysis in mixed method implementation research. *Administ Policy Mental Health Mental Health Serv Res*. (2015) 42:533–44. doi: 10.1007/s10488-013-0528-y
33. Hatchuel ALM, P, Subrahmanian ER, Y. Design theory: the foundations of a new paradigm for science and engineering. *Res Eng Design*. (2018) 29:5–21. doi: 10.1007/s00163-017-0275-2
34. Le Masson P, Hatchuel A, Le Glatin M, Weil B. Designing decisions in the unknown: a generative model. *Eur Manag Rev*. (2018) 16:471–90. doi: 10.1111/emre.12289
35. Agogué M, Hooge S, Arnoux F, Brown I. *An Introduction to Innovative Design: Elements and Applications of C-K Theory*. Presses des Mines (2014).
36. Le Masson P, Hatchuel A, Weil B, editors. Creativity and design reasoning: how C-K theory can enhance creative design. In: *Proceedings of the International Conference on Engineering Design (ICED)*. Paris (2007).
37. Mowbray F, Amlôt R, Rubin GJ. Ticking all the boxes? A systematic review of education and communication interventions to prevent tick-borne disease. *Vector Borne Zoonot Dis*. (2012) 12:817–25. doi: 10.1089/vbz.2011.0774
38. Pages F, Dautel H, Duvallet G, Kahl O, de Gentile L, Boulanger N. Tick repellents for human use: prevention of tick bites and tick-borne diseases. *Vector Borne Zoonot Dis*. (2014) 14:85–93. doi: 10.1089/vbz.2013.1410
39. Institute-of-Medicine. *Critical Needs and Gaps in Understanding Prevention, Amelioration, and Resolution of Lyme and Other Tick-Borne Diseases: The Short-Term and Long-Term Outcomes: Workshop Report*. Washington DC: National Academies Press (2011).
40. Merino O, Alberdi P, Perez de la Lastra JM, de la Fuente J. Tick Vaccines and the control of tick-borne pathogens. *Front Cell Infect Microbiol*. (2013) 3:30. doi: 10.3389/fcimb.2013.00030
41. Plotkin SA. Need for a new lyme disease vaccine. *N Engl J Med*. (2016) 375:911–3. doi: 10.1056/NEJMp1607146
42. Nardelli D, Munson E, Callister SM, Schell RF. Human Lyme disease vaccines: past and future concerns. *Future Microbiol*. (2009) 4:457–69. doi: 10.2217/fmb.09.17
43. Tram KH, Saeed S, Bradley C, Fox B, Eshun-Wilson I, Mody A, et al. Deliberation, dissent, and distrust: understanding distinct drivers of coronavirus disease 2019 vaccine hesitancy in the United States. *Clin Infect Dis*. (2021) 74:1429–41. doi: 10.1093/cid/ciab633
44. Harms MG, Hofhuis A, Sprong H, Bennis SC, Ferreira JA, Fonville M, et al. A single dose of doxycycline after an *Ixodes Ricinus* tick bite to prevent lyme borreliosis: an open-label randomized controlled trial. *J Infect*. (2020) 82:98–104. doi: 10.1016/j.jinf.2020.06.032
45. Warshafsky S, Lee DH, Francois LK, Nowakowski J, Nadelman RB, Wormser GP. Efficacy of antibiotic prophylaxis for the prevention of lyme disease: an updated systematic review and meta-analysis. *J Antimicrob Chemother*. (2010) 65:1137–44. doi: 10.1093/jac/dkq097
46. Diuk-Wasser MA, Hoen AG, Cislo P, Brinkerhoff R, Hamer SA, Rowland M, et al. Human risk of infection with *Borrelia burgdorferi*, the lyme disease agent, in eastern United States. *Am J Tropical Med Hygiene*. (2012) 86:302–27. doi: 10.4269/ajtmh.2012.11-0395
47. Jordan RA, Schulze TL, Eisen L, Dolan MC. Ability of three general-use pesticides to suppress nymphal *Ixodes Scapularis* and *Amblyomma Americanum* (Acari: Ixodidae). *J Am Mosq Control Assoc*. (2012) 33:50–5. doi: 10.2987/16-6610.1
48. Dolan MC, Maupin GO, Schneider BS, Denatale C, Hamon N, Cole C, et al. Control of immature *Ixodes Scapularis* (Acari: Ixodidae) on Rodent Reservoirs of *Borrelia Burgdorferi* in a Residential Community of Southeastern Connecticut. *J Med Entomol*. (2004) 41:1043–54. doi: 10.1603/0022-2585-41.6.1043
49. Carroll JF, Allen PC, Hill DE, Pound JM, Miller JA, George JE. Control of *Ixodes Scapularis* and *Amblyomma Americanum* through Use of the '4-Poster' Treatment Device on Deer in Maryland. *Exp Appl Acarol*. (2002) 28:289–96. doi: 10.1023/A:1025383408163
50. Carroll JF, Pound JM, Miller JA, Kramer M. Sustained control of gibbon island, maryland, populations of *Ixodes Scapularis* and *Amblyomma Americanum* (Acari: Ixodidae) by Community-Administered 4-Poster Deer Self-Treatment Bait Stations. *Vector Borne Zoonotic Dis*. (2009) 9:417–21. doi: 10.1089/vbz.2008.0166
51. Hladik ML, Main AR, Goulson D. Environmental risks and challenges associated with neonicotinoid insecticides. *Environ Sci Technol*. (2018) 52:3329–35. doi: 10.1021/acs.est.7b06388
52. Williams SC, Ward JS. Effects of Japanese barberry (ranunculales: berberidaceae) removal and resulting microclimatic changes on *ixodes scapularis* (Acari: Ixodidae) Abundances in Connecticut, USA. *Environ Entomol*. (2010) 39:1911–21. doi: 10.1603/EN10131
53. Tack W, Madder M, Baeten L, Vanhellemont M, Verheyen K. Shrub clearing adversely affects the abundance of *Ixodes Ricinus* ticks. *Exp Appl Acarol*. (2013) 60:411–20. doi: 10.1007/s10493-013-9655-0
54. Verheyen K, Ruyts SC. *How Can Forest Managers Help to Reduce the Risk for Lyme Borreliosis?* Braks SEvW MAH, Takken W, Sprong H, editor. (2016).
55. Gilbert L, Maffey GL, Ramsay SL. The effect of deer management on the Abundance of *Ixodes Ricinus* in Scotland. *Ecol Appl*. (2012) 22:658–67. doi: 10.1890/11-0458.1
56. Stafford KC, Williams SC, Molaei G. Integrated pest management in controlling ticks and tick-associated diseases. *J Integrat Pest Manag*. (2017) 8:18. doi: 10.1093/jipm/pmx018
57. Hartelt K, Wurst E, Collatz J, Zimmermann G, Kleespies RG, Oehme RM, et al. Biological control of the tick *Ixodes Ricinus* with entomopathogenic fungi and nematodes: preliminary results from laboratory experiments. *Int J Med Microbiol*. (2008) 298:314–20. doi: 10.1016/j.ijmm.2007.10.003
58. Samish K, Ginsberg H, Glazer I. Biological control of ticks. *Parasitology*. (2005) 129:S389–S403. doi: 10.1017/S0031182004005219
59. Jacquot M, Gonnet M, Ferquel E, Abrial D, Claude A, Gasqui P, et al. Comparative population genomics of the *Borrelia Burgdorferi* species complex reveal high degree of genetic isolation among species and underscore benefits and constraints to studying intra-specific epidemiological processes. *PLoS ONE*. (2014) 9:e94384. doi: 10.1371/journal.pone.0094384
60. Gorkom Tv, Arkel GHJv, Heron M, Voet W, Thijsen SFT, Kremer K. The usefulness of two Cxcl13 assays on cerebrospinal fluid for the diagnosis of lyme neuroborreliosis: a retrospective study in a routine clinical setting. *J Clin Microbiol*. (2021) 59:e00255–21. doi: 10.1128/JCM.00255-21
61. Shan J, Jia Y, Teulière L, Patel F, Clokie MRJ. Targeting multicopy prophage genes for the increased detection of *Borrelia Burgdorferi* Sensu Lato (S.L.), the causative agents of lyme disease, in blood. *Front Microbiol*. (2021) 12:651217. doi: 10.3389/fmicb.2021.651217
62. Cook MJ, Puri BK. Commercial test kits for detection of Lyme borreliosis: a meta-analysis of test accuracy. *Int J Gen Med*. (2016) 9:427–40. doi: 10.2147/IJGM.S122313
63. Zucca M, Savoia D. The post-antibiotic era: promising developments in the therapy of infectious diseases. *Int J Biomed Sci*. (2010) 6:77–86.
64. Eggers CH, Samuels DS. Molecular evidence for a new bacteriophage of *Borrelia Burgdorferi*. *J Bacteriol*. (1999) 181:7308–13. doi: 10.1128/JB.181.23.7308-7313.1999
65. Slunge D, Boman A. Learning to live with ticks? The role of exposure and risk perceptions in protective behaviour against tick-borne diseases. *PLoS ONE*. (2018) 13:e0198286. doi: 10.1371/journal.pone.0198286
66. Eisen L, Stafford KC. Barriers to effective tick management and tick-bite prevention in the United States (Acari: Ixodidae). *J Med Entomol*. (2021) 58:1588–600. doi: 10.1093/jme/tjaa079
67. Santos EM, McClelland DJ, Shelly CE, Hansen L, Jacobs ET, Klimentidis YC, et al. Malaria education interventions addressing bed net care and repair practices: a systematic review. *Pathog Glob Health*. (2020) 114:2–15. doi: 10.1080/20477724.2020.1719727
68. Yang GG, Kim D, Pham A, Paul CJ. A meta-regression analysis of the effectiveness of mosquito nets for malaria control: the value of long-lasting insecticide nets. *Int J Environ Res Public Health*. (2018) 15:546. doi: 10.3390/ijerph15030546
69. Septfons A, Fignoni J, Gautier A, Soullier N, de Valk H, Desenclos JC. Increased awareness and knowledge of lyme borreliosis and tick bite prevention among the general population in france: 2016 and 2019 health barometer survey. *BMC Public Health*. (2021) 21:1808. doi: 10.1186/s12889-021-11850-1
70. Knoll JM, Ridgeway AC, Boogaerts CM, Burket GA, III. Appalachian trail hikers'ability to recognize lyme disease by visual stimulus photographs. *Wilderness Environ Med*. (2014) 25:24–8. doi: 10.1016/j.wem.2013.09.009
71. Clow KM, Leighton PA, Pearl DL, Jardine CM. A framework for adaptive surveillance of emerging tick-borne zoonoses. *One Health*. (2019) 7:100083. doi: 10.1016/j.onehlt.2019.100083

72. Eisen RJ, Paddock CD. Tick and tickborne pathogen surveillance as a public health tool in the United States. *J Med Entomol.* (2021) 58:1490–502. doi: 10.1093/jme/tjaa087
73. Kelly GC, Tanner M, Vallye A, Clements A. Malaria elimination: moving forward with spatial decision support systems. *Trends Parasitol.* (2012) 28:297–304. doi: 10.1016/j.pt.2012.04.002
74. Dumes AA. Lyme disease and the epistemic tensions of “medically unexplained illnesses”. *Med Anthropol.* (2020) 39:441–56. doi: 10.1080/01459740.2019.1670175
75. Nishiguchi S, Ito H, Yamada M, Yoshitomi H, Furu M, Ito T, et al. Self-assessment tool of disease activity of rheumatoid arthritis by using a smartphone application. *Telemed E-health.* (2014) 20:235–40. doi: 10.1089/tmj.2013.0162
76. Subramaniam S, Chan CY, Soelaiman IN, Mohamed N, Muhammad N, Ahmad F, et al. The performance of osteoporosis self-assessment tool for Asians (Osta) in identifying the risk of osteoporosis among malaysian population aged 40 years and above. *Arch Osteoporos.* (2019) 14:117. doi: 10.1007/s11657-019-0666-2
77. Burlina P, Joshi N, Ng E, Billings S, Rebman A, Aucott J. Skin image analysis for erythema migrans detection and automated lyme disease referral. In: *Lecture Notes in Computer Science.* (2018). Cham: Springer (2018). p. 244–51.
78. Letertre-Gibert P, Vourc'h G, Lebert I, René-Martellet M, Corbin-Valdenaire V, Portal-Martineau D, et al. Lyme snap: a feasibility study of on-line declarations of erythema migrans in a rural area of france. *Ticks Tick Borne Dis.* (2020) 11:101301. doi: 10.1016/j.ttbdis.2019.101301
79. Nadelman RB, Wormser GP. Reinfection in patients with lyme disease. *Clin Infect Dis.* (2007) 45:1032–8. doi: 10.1086/521256
80. Vayssier-Taussat M, Cosson JF, Degeilh B, Eloit M, Fontanet A, Moutailler S, et al. How a multidisciplinary ‘one health’ approach can combat the tick-borne pathogen threat in Europe. *Future Microbiol.* (2015) 10:809–18. doi: 10.2217/fmb.15.15
81. Keesing F, Ostfeld RS. Impacts of biodiversity and biodiversity loss on zoonotic diseases. *Proc Natl Acad Sci USA.* (2021) 118:e2023540118. doi: 10.1073/pnas.2023540118
82. Destoumieux-Garzon D, Mavingui P, Boetsch G, Boissier J, Darriet F, Duboz P, et al. The one health concept: 10 years old and a long road ahead. *Front Vet Sci.* (2018) 5:14. doi: 10.3389/fvets.2018.00014
83. Keesing F, Ostfeld RS. Dilution effects in disease ecology. *Ecol Lett.* (2021) 24:2490–505. doi: 10.1111/ele.13875
84. Kocher A, Cornuault J, Gantier JC, Manzi S, Chavy A, Girod R, et al. Biodiversity and vector-borne diseases: host dilution and vector amplification occur simultaneously for amazonian leishmaniasis. *Mol Ecol.* (2022) doi: 10.1111/mec.16341
85. Bonnet SI, Pollet T. Update on the intricate tango between tick microbiomes and tick-borne pathogens. *Parasite Immunol.* (2021) 43:e12813. doi: 10.1111/pim.12813
86. Saout C. La Lutte Contre Le Sida : Le Face À Face Des Associations Et De L'état Les Tribunes de la santé (2015).
87. Dalgalarondo S. Quelle place pour les associations de malades dans le processus d'innovation medicamenteuse? Le cas des maladies rares. In: *Revue Française des Affaires Sociales.* (2007). :p. 171–91.
88. Ali A, Vitulano L, Lee R, Weiss TR, Colson ER. Experiences of patients identifying with chronic lyme disease in the healthcare system: a qualitative study. *BMC Fam Pract.* (2014) 15:79. doi: 10.1186/1471-2296-15-79
89. Megari K. Quality of life in chronic disease patients. *Health Psychol Res.* (2013) 1:e27. doi: 10.4081/hpr.2013.e27
90. Wright S, Yadav V, Bever C, Jr., Bowen J, Bowling A, et al. Summary of evidence-based guideline: complementary and alternative medicine in multiple sclerosis: report of the guideline development subcommittee of the american academy of neurology. *Neurology.* (2014) 83:1484–6. doi: 10.1212/01.wnl.0000455935.13606.91
91. Yelin D, Moschopoulos CD, Margalit I, Gkrania-Klotsas E, Landi F, Stahl JP, et al. Escmid rapid guidelines for assessment and management of long covid. *Clin Microbiol Infect.* (2022) doi: 10.1016/j.cmi.2022.02.018
92. Beal D, Foli KJ. Affordability in individuals' healthcare decision making: a concept analysis. *Nursing Forum.* (2021) 56:188–93. doi: 10.1111/nuf.12518
93. Raffetin A, Schemoul J, Chahour A, Nguala S, Caraux-Paz P, Paoletti G, et al. Multidisciplinary management of suspected lyme borreliosis: clinical features of 569 patients, and factors associated with recovery at 3 and 12 months, a prospective cohort study. *Microorganisms.* (2022) 10:607. doi: 10.3390/microorganisms10030607
94. Tong A, Sainsbury P, Craig J. Consolidated criteria for reporting qualitative research (Coreq): a 32-Item checklist for interviews and focus groups. *Int J Qual Health Care.* (2007) 19:349–57. doi: 10.1093/intqhc/mzm042
95. Louwage V. Rapport D'information De L'Assemblée Nationale Relatif Au Financement Et À L'efficacité De La Lutte Contre La Maladie De Lyme. Paris: Assemblée Nationale Française (2021).
96. Descœur VT, N. Rapport D'information De L'Assemblée Nationale En Conclusion Des Travaux De La Mission Sur La Maladie De Lyme: Améliorer La Prise En Charge Des Patients. Paris: Assemblée Nationale Française (2021).