



HAL
open science

Barcoding pour étudier les forces sélection/dérive génétique dans des populations de puceron

Rafael Feriche-Linares, Nathalie Boissot

► **To cite this version:**

Rafael Feriche-Linares, Nathalie Boissot. Barcoding pour étudier les forces sélection/dérive génétique dans des populations de puceron. *Detection, Gestion et Analyse du Polymorphisme des Genomes Végétaux*, EPGV, Oct 2018, Evry, France. hal-03973500

HAL Id: hal-03973500

<https://hal.inrae.fr/hal-03973500>

Submitted on 4 Feb 2023

HAL is a multi-disciplinary open access archive for the deposit and dissemination of scientific research documents, whether they are published or not. The documents may come from teaching and research institutions in France or abroad, or from public or private research centers.

L'archive ouverte pluridisciplinaire **HAL**, est destinée au dépôt et à la diffusion de documents scientifiques de niveau recherche, publiés ou non, émanant des établissements d'enseignement et de recherche français ou étrangers, des laboratoires publics ou privés.

Barcoding pour étudier les forces sélection/dérive génétique dans des populations de puceron

Rafael Feriche Linares, Nathalie Boissot

GAFL & EPGV

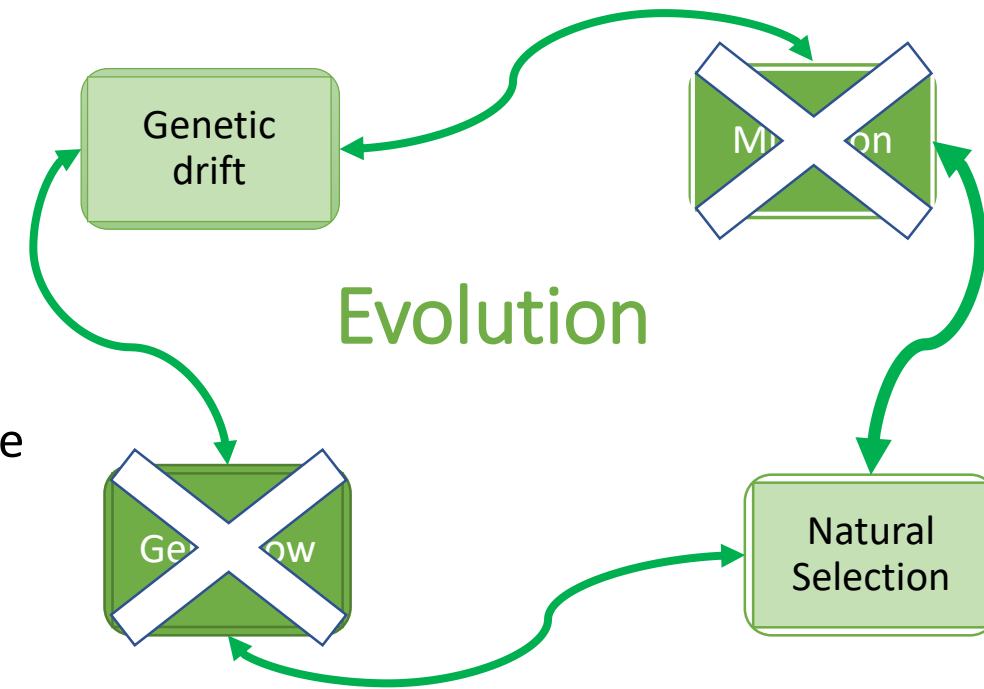
Aphis gossypii :

- able to colonize more than 600 host plants, major pest on cucurbits
 - a sap feeder and efficient plant viruses vector
 - mainly asexual reproduction insect
 - overlapping generations
-
- Restrictions of insecticide use promote aphid resistant cultivars deployment.
 - The cluster ***Vat*** in melon confers resistance to infestations and also inhibits plant infections by non-persistent viruses transmitted by *A. gossypii*.
 - The cluster ***Vat*** has been introduced into commercial lines that have strong success in southern France.



Evolution Forces

- *A. gossypii* populations has evolved to overcome **Vat** resistance. **C6 and CUC1 clones overcome Vat resistance in different manners.** Resistance (ETI) not triggered, ETI triggered but overcome
- In populations, four forces occur => which clones extinct or continue in nature.
- Laboratory conditions allow to study only the effects of **drift** and **selection** within the populations.



Which overcoming system is the most efficient ?

May drift occur in populations of clones overcoming resistance ?



Develop a technique to determine aphid clone frequencies in a population.

- Low cost
- Accurate



Investigate selection and (drift) occurrence in aphid populations.

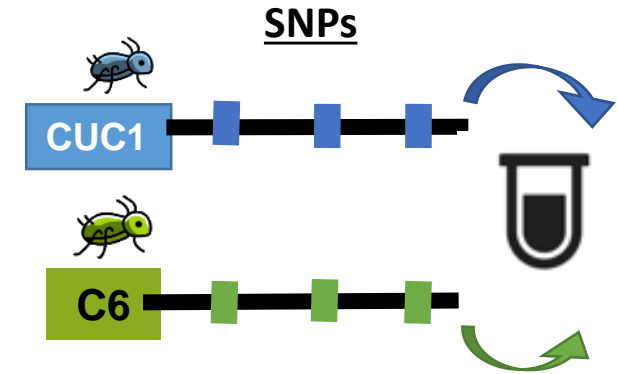
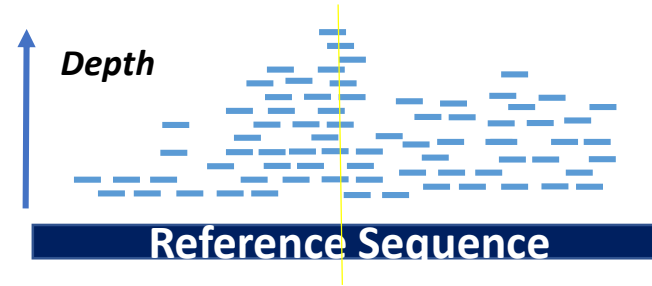
Technical development

1) Strategy

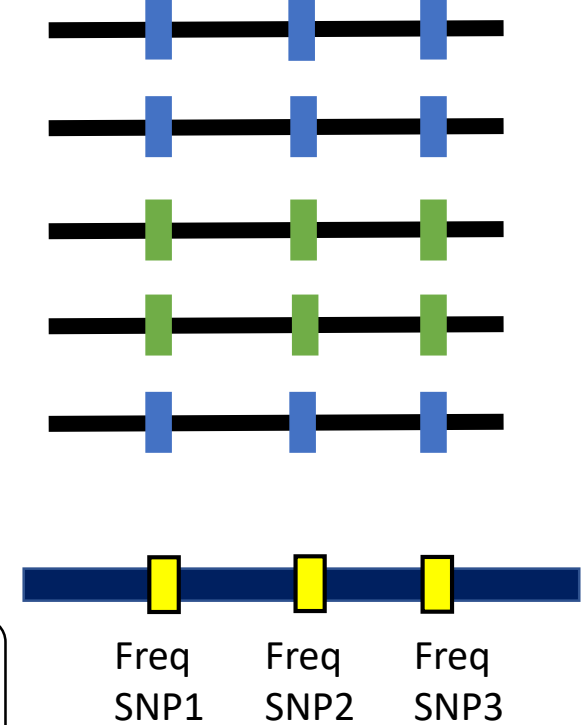


Barcoding tools

1. Design DNA amplicons with multiples SNPs to distinguish CUC1 and C6 clones from a reference transcriptome.
2. Sequence amplicons by Illumina from samples that contain known frequencies of CUC1/C6 aphids
3. Verify coverage, amplicons and SNPs positions. Determine C6 read frequencies.
4. Verify reliability of observed C6 frequencies (Abacus).



Reads



Mean = Observed clone frequency

1) Strategy

Amplicon characteristics

- At least 3 SNPs homozygous for clones CUC1 and C6.
- Highly conserved regions for primer design.
- Amplicon length limited to Illumina read length (150 bp).
- Minimum expected coverage per aphid 10 X
- Not in melon

2) Amplicon design



3) Sequencing

Limitations

- No reference genome (350 Mb)
- Not possible to verify amplicons obtained by Illumina before biological tests

4) Abacus

Search for homozygous SNPs in a reference transcriptome from *A. gossypii* heads (33813 contigs)
Samtools, VarScan, IGV

36 amplicon candidates



Search for highly conserved regions bordering SNPs
Primer3, Blast

18 amplicon candidates



Sanger sequencing from genomic DNA
ChromasBlast on melon

7 amplicon candidates



Primer design for Illumina sequencing
Primer3, Blast

10 amplicon candidates



2 amplicons

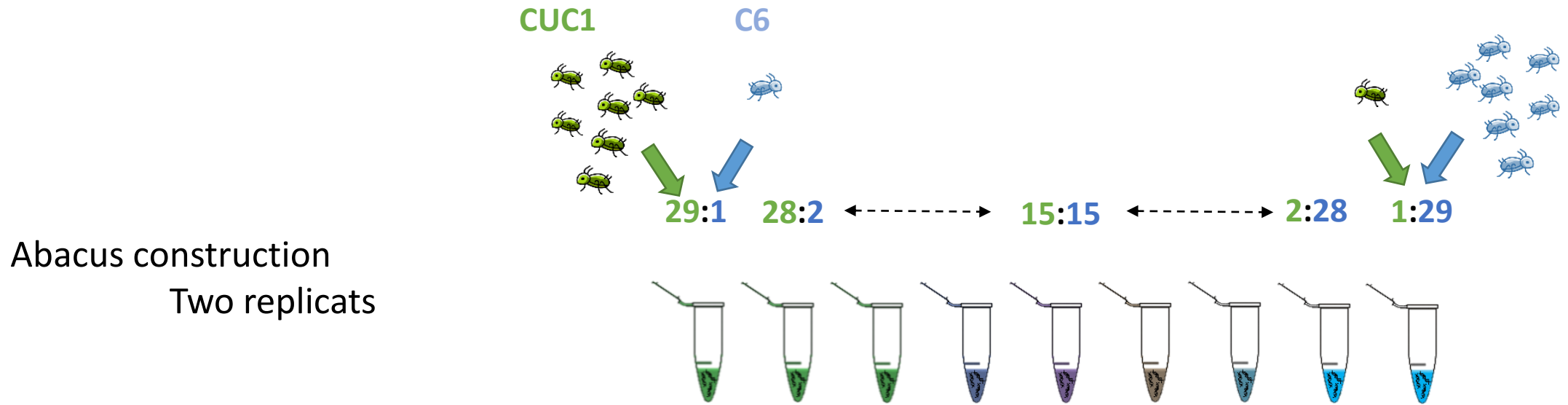
Technical development

Strategy

Amplicon design

Sequencing

Abacus

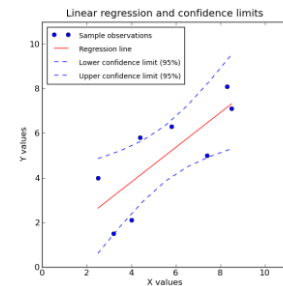


Abacus construction
Two replicats

DNA extraction, **Aphids + Plants**
Illumina sequencing



Linear regression : observed vs estimated frequencies



Technical development

Strategy

Illumina Miseq micro 2*150,

Raw data filter (Q>30)

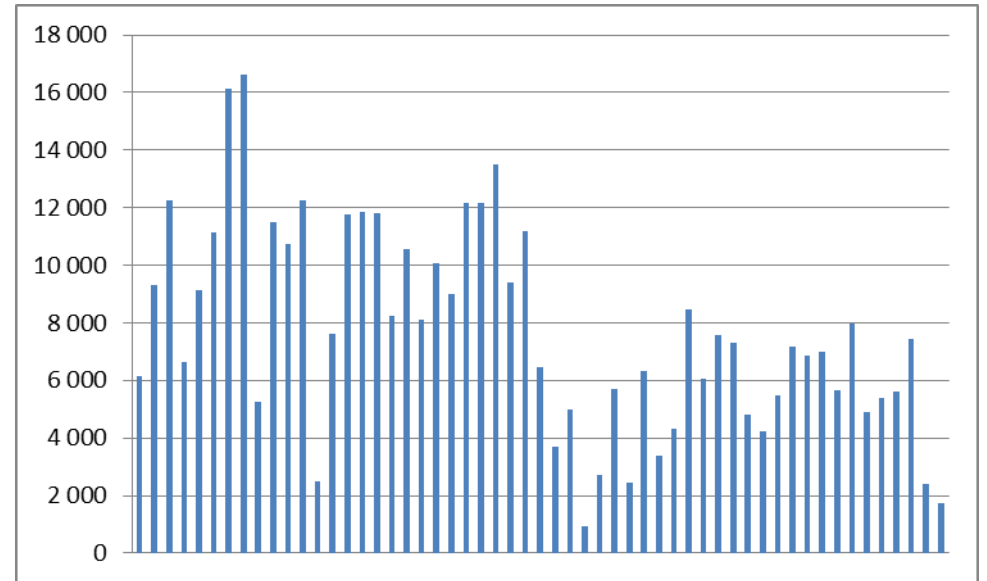
Number of reads for 30 aphids:

Median 7287

Min 924,

Max 16629

Amplicon 2 more efficient

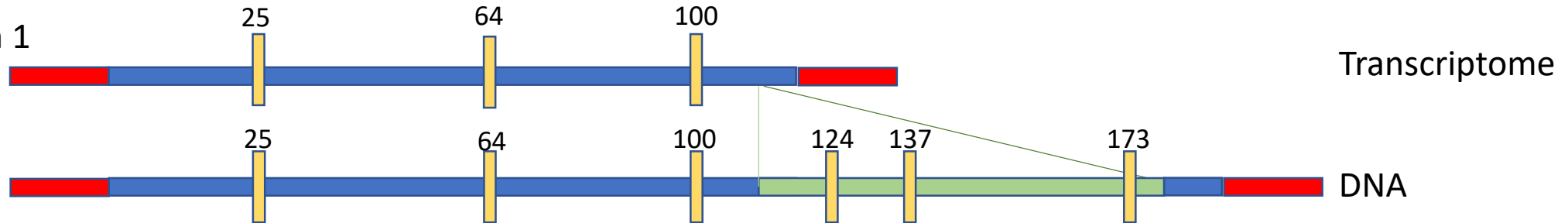


Amplicon design

Sequencing

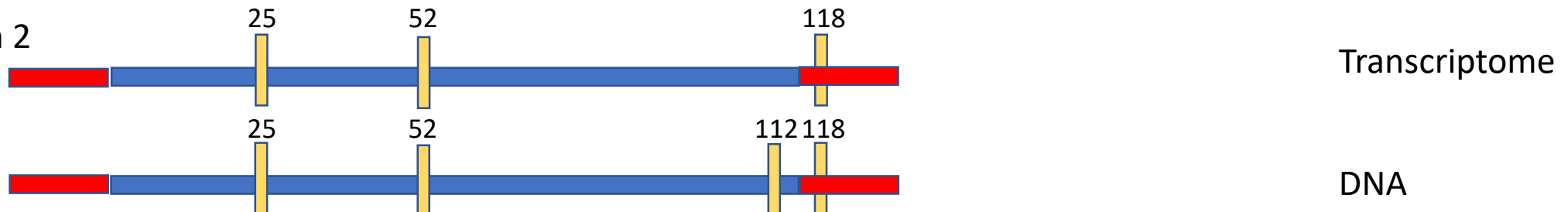


Amplicon 1



Abacus

Amplicon 2



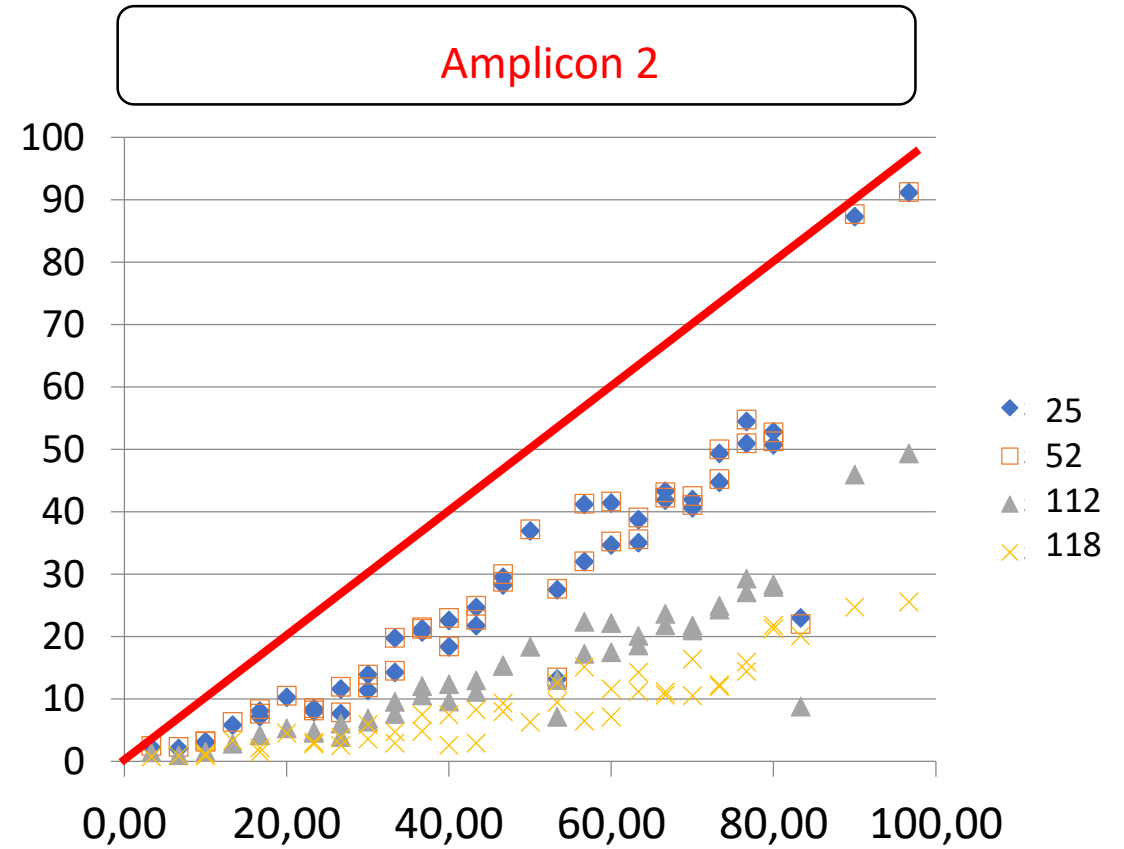
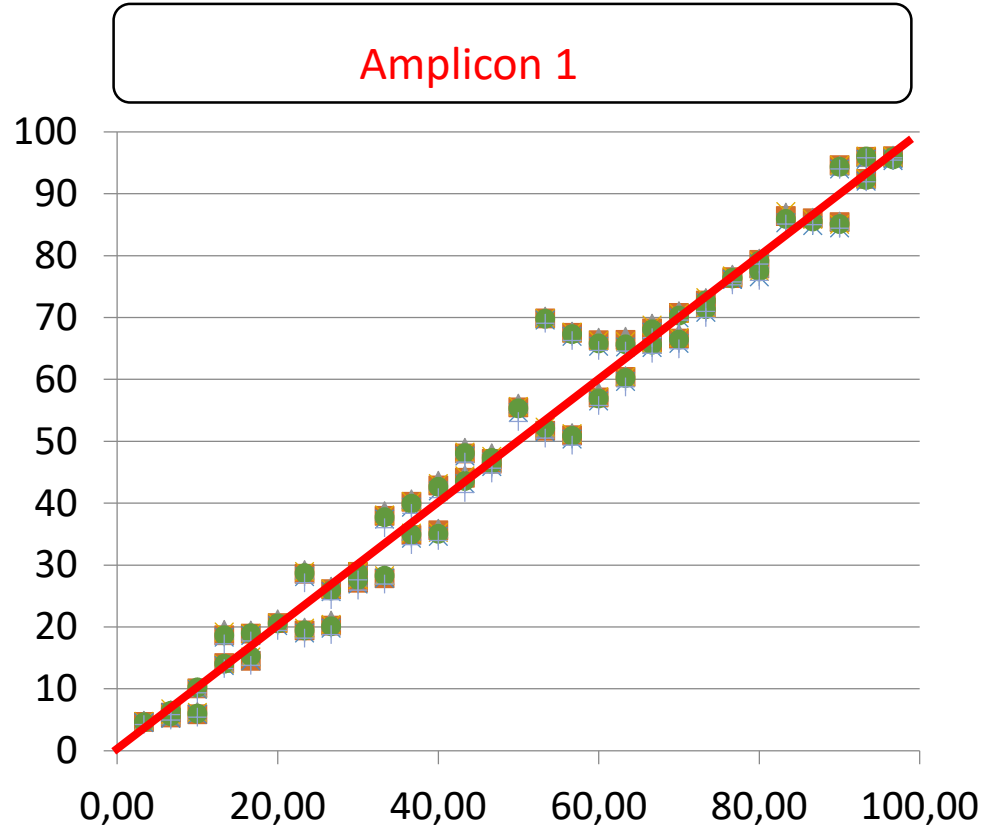
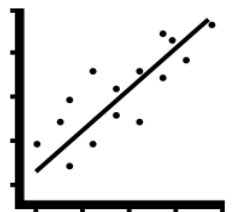
Technical development

Strategy

Amplicon design

Sequencing

Abacus



Heterospecificity => Unexpected results

Strategy

Accuracy of Amplicon 1

Confidence band at 95% shows accuracy $\pm 5\%$

Only two values were outside of the confidence interval of predicted point.

Error test in tubes manipulation does not explain values outside interval.

A vérifier

Avec des cohortes de pucerons d'âges différents

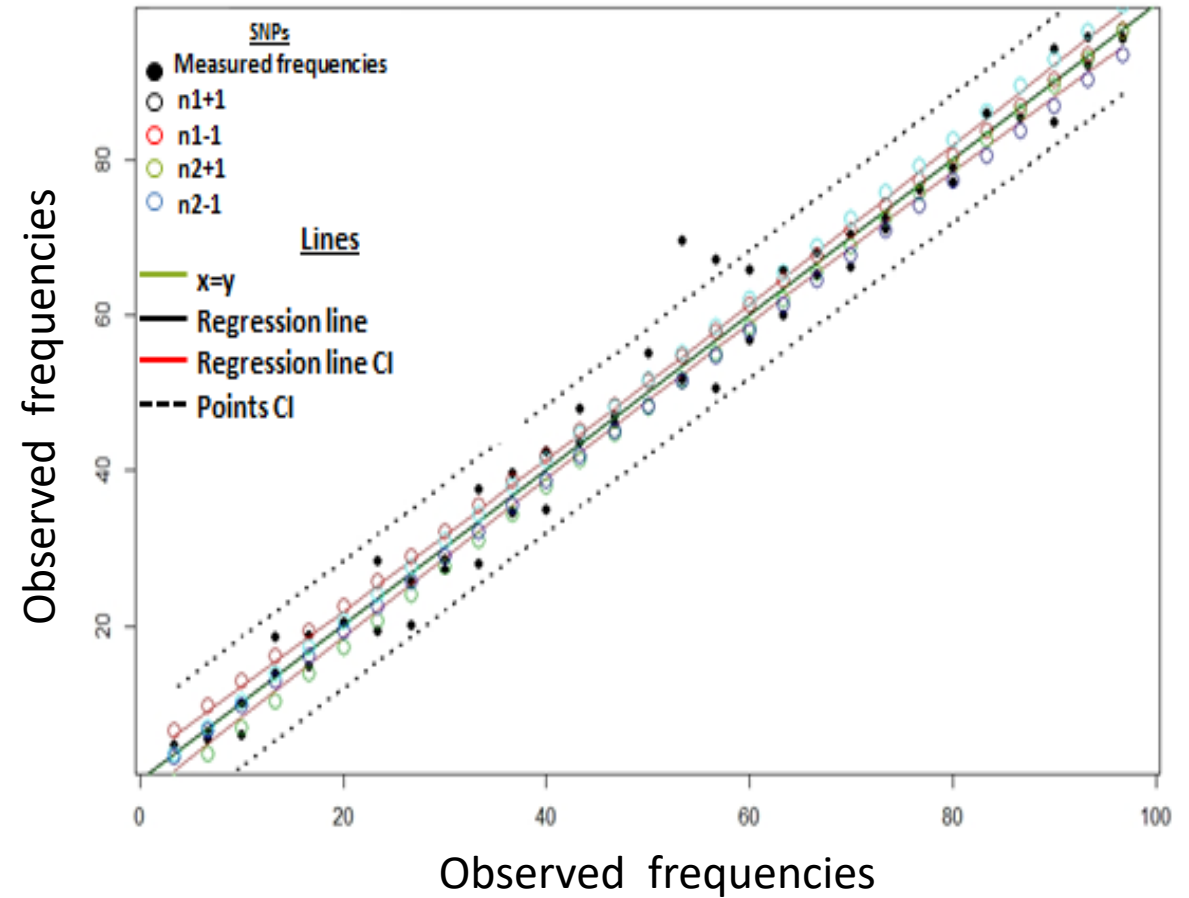
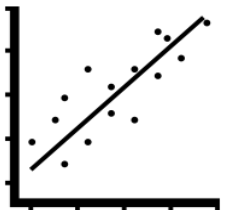
Avec des mélanges de 100-500 pucerons

Amplicon 1 used to analyze the biological tests

Amplicon design

Sequencing

Abacus





Develop a technique to determine aphid clone frequencies in a population.

- Low cost
- Accurate



Investigate selection and drift occurrence in aphid populations.

Biological essays



Infestations

Vat and non Vat plants

CUC1 and C6 clones at different departure conditions

N=12 - 24

Sequencing

Estimating aphid populations

after 4 and 8 days on independent essays

N=4

Frequency analyses

Collecting aphid populations (with plants)

after 4 and 8 days for proportions

after 4 days for density

Proportion

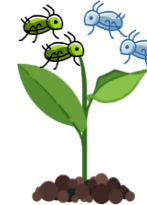
1/3



3/1



2/2



Density

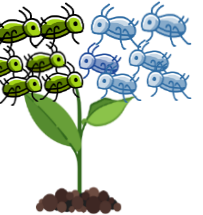
1:1



2:2



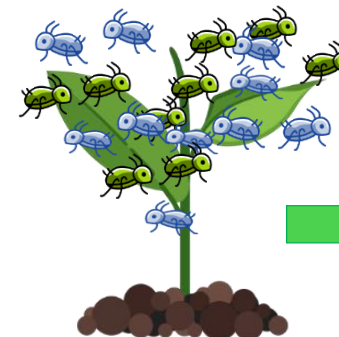
3:3



4:4

5:5

6:6



Amplicons 1 & 2

Biological essays

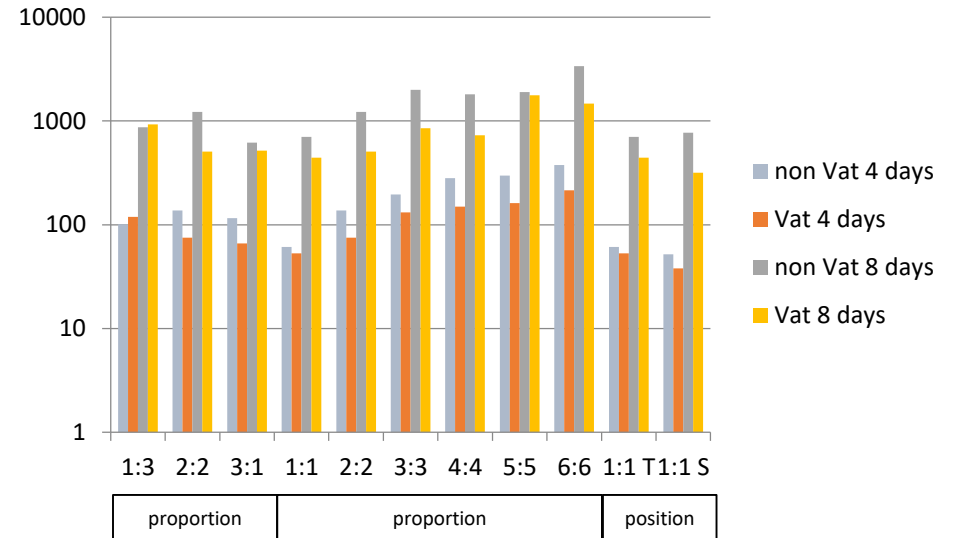


Number of aphids per plant

Estimated on independant essays

N=4

Little bit less aphids on Vat plants



Sequencing



323/324 samples with amplicons

Amplicon 1 :

Median 1565 reads

Min 49 reads

Max 24262 reads

Coverage

Amplicon 1

146 samples with an estimated coverage >10

No samples collected after 8 days had a coverage > 10

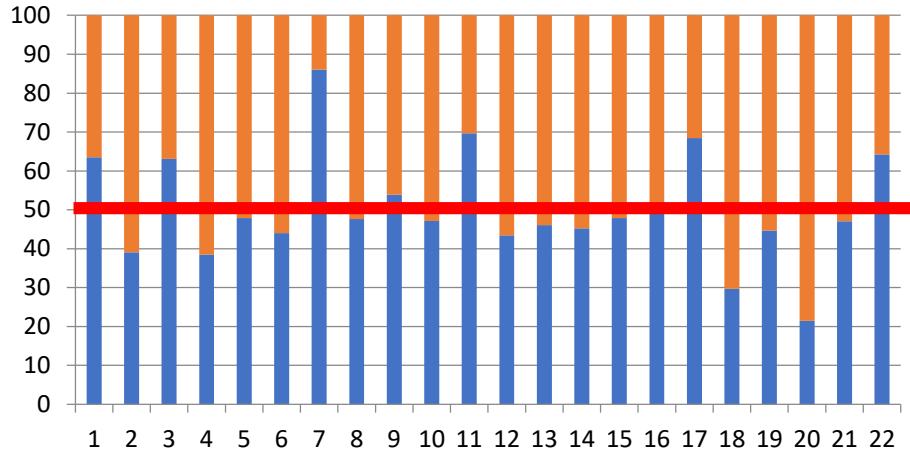
Frequency analyses

IC SNP_{C6} frequency [0,08-1,33]

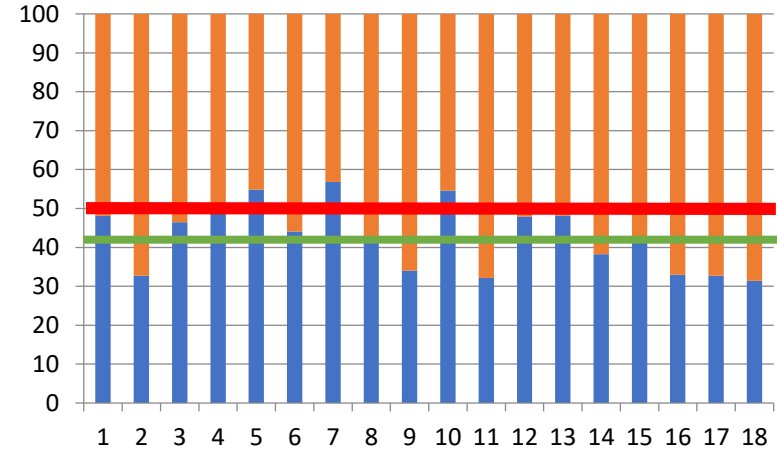
C6

CUC1

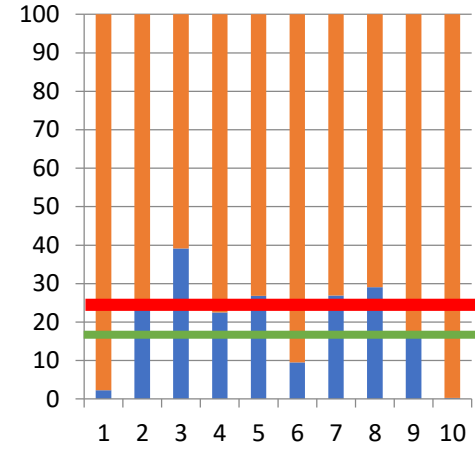
1-1 non-Vat plants



2-2 non-Vat plants



3-1 non-Vat plants



No significant selection

Drift ?

Drift ?

Biological essays



Sequencing



Frequency analyses



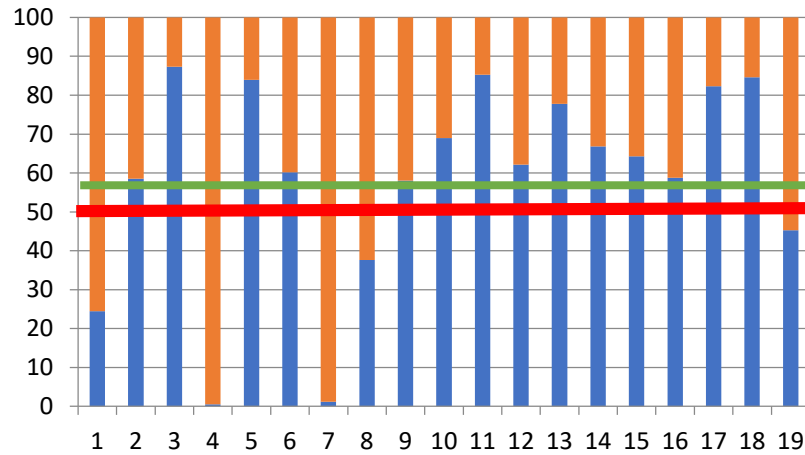
CUC1

C6

Biological essays



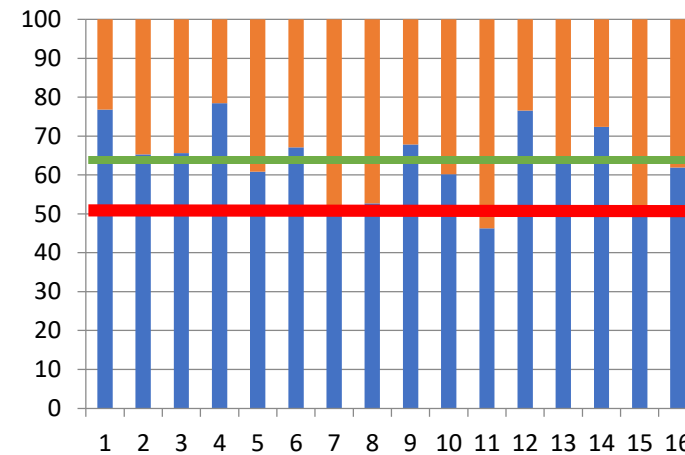
1-1 Vat plants



No significant selection

Drift ?

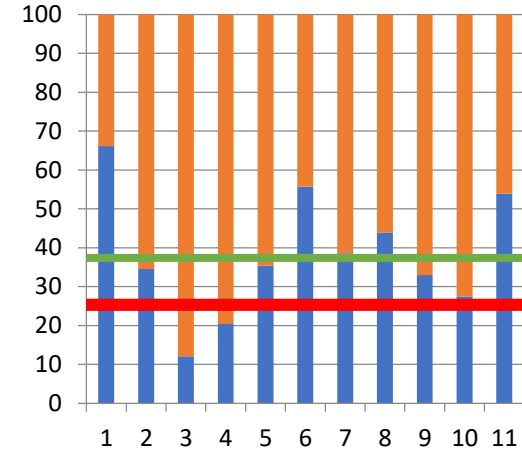
2-2 Vat plants



Selection in favor of C6 ($p < 0.05$)

Drift ?

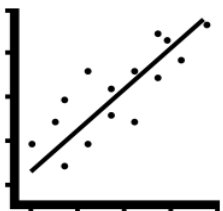
3-1 Vat plants



Sequencing



Frequency analyses



- Built an abacus with large cohorts reared on non-Vat and Vat plants
- Amplicon 1 will be sufficient to infer C6 frequency
 - if amplified alone
 - in 7 days population
- Amplicon 1 can be used to study 3 other clones

- Selection was favorable to C6 on resistant plants (ETI not triggered).
- Drift may occur at low departure conditions on non-Vat and Vat plants
- More analysis is required to assess the effects of drift