



HAL
open science

Nanopore Adaptive sampling: A powerful approach to decipher the genetic diversity of the NLRome/resistome in melon

Javier Belinchon-Moreno

► To cite this version:

Javier Belinchon-Moreno. Nanopore Adaptive sampling: A powerful approach to decipher the genetic diversity of the NLRome/resistome in melon. Conference, talk, Oxford Nanopore Technologies, Mar 2023, Paris institut du cerveau (ICM), France. hal-04037782

HAL Id: hal-04037782

<https://hal.inrae.fr/hal-04037782>

Submitted on 20 Mar 2023

HAL is a multi-disciplinary open access archive for the deposit and dissemination of scientific research documents, whether they are published or not. The documents may come from teaching and research institutions in France or abroad, or from public or private research centers.

L'archive ouverte pluridisciplinaire **HAL**, est destinée au dépôt et à la diffusion de documents scientifiques de niveau recherche, publiés ou non, émanant des établissements d'enseignement et de recherche français ou étrangers, des laboratoires publics ou privés.



Distributed under a Creative Commons Attribution - NonCommercial - NoDerivatives 4.0 International License

➤ Nanopore Adaptive sampling: A powerful approach to decipher the genetic diversity of the NLRome/resistome in melon

Javier BELINCHON-MORENO

Nanopore Day, Paris, 21st March 2023

➤ EPGV – INRAE: plant genomic platform located at Genoscope, Evry - France



support-EPGV@inrae.fr



- Experiment reporting
- Data archiving

Bioanalyses

High quality
data
LIMS

WetLab
expertise

Expertise and
consulting in
Genomics

- Genome assembly & annotations
- Variants detection



- Variants calling (SNPs/SVs)

Genotypes matrix
Bam / vcf / fasta
Genome sequence



EPGV
Etude du Polymorphisme
des Génomes Végétaux

INRAE

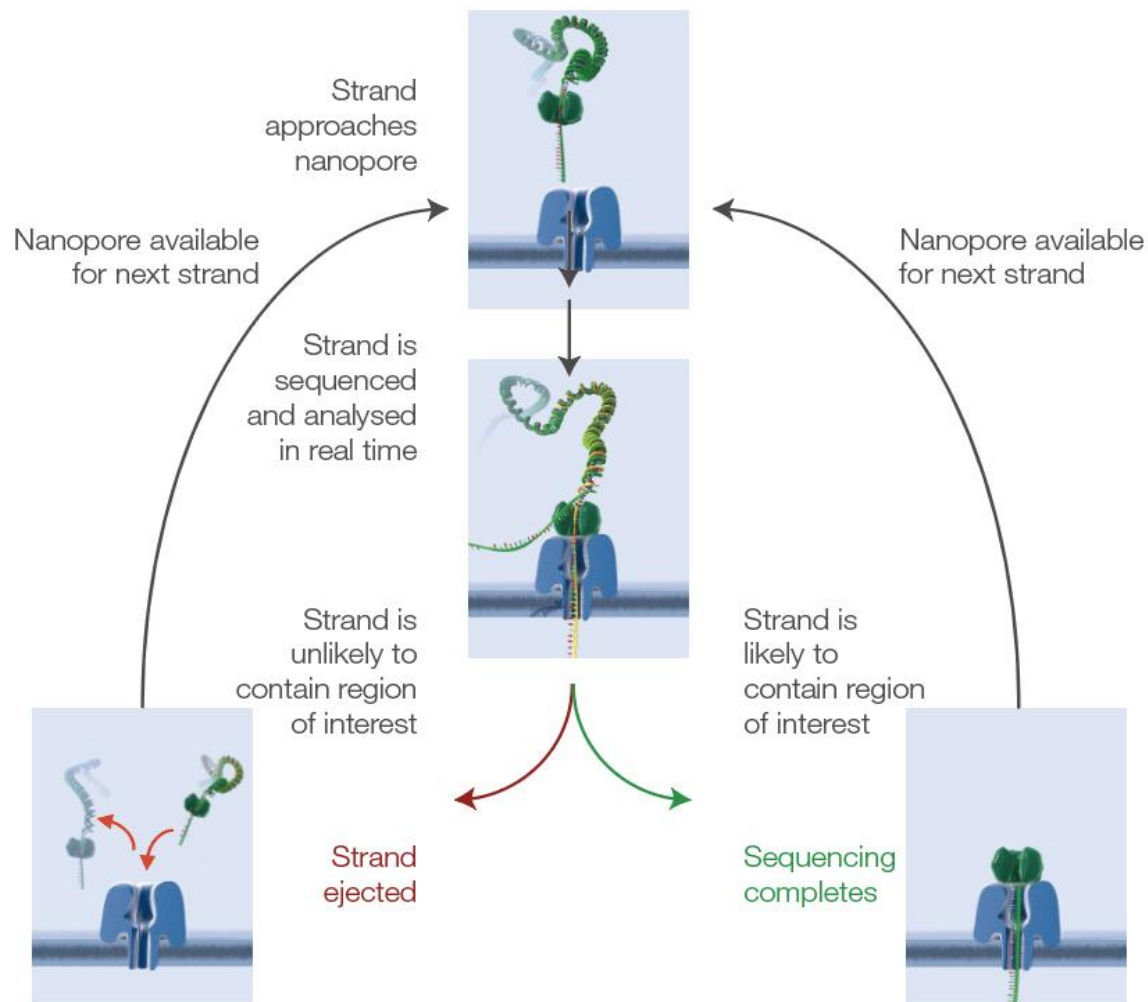
**INRAE
GENOMICS**

INRAE

21 March 2023 / Javier BELINCHON-MORENO

➤ What is Nanopore adaptive sampling?

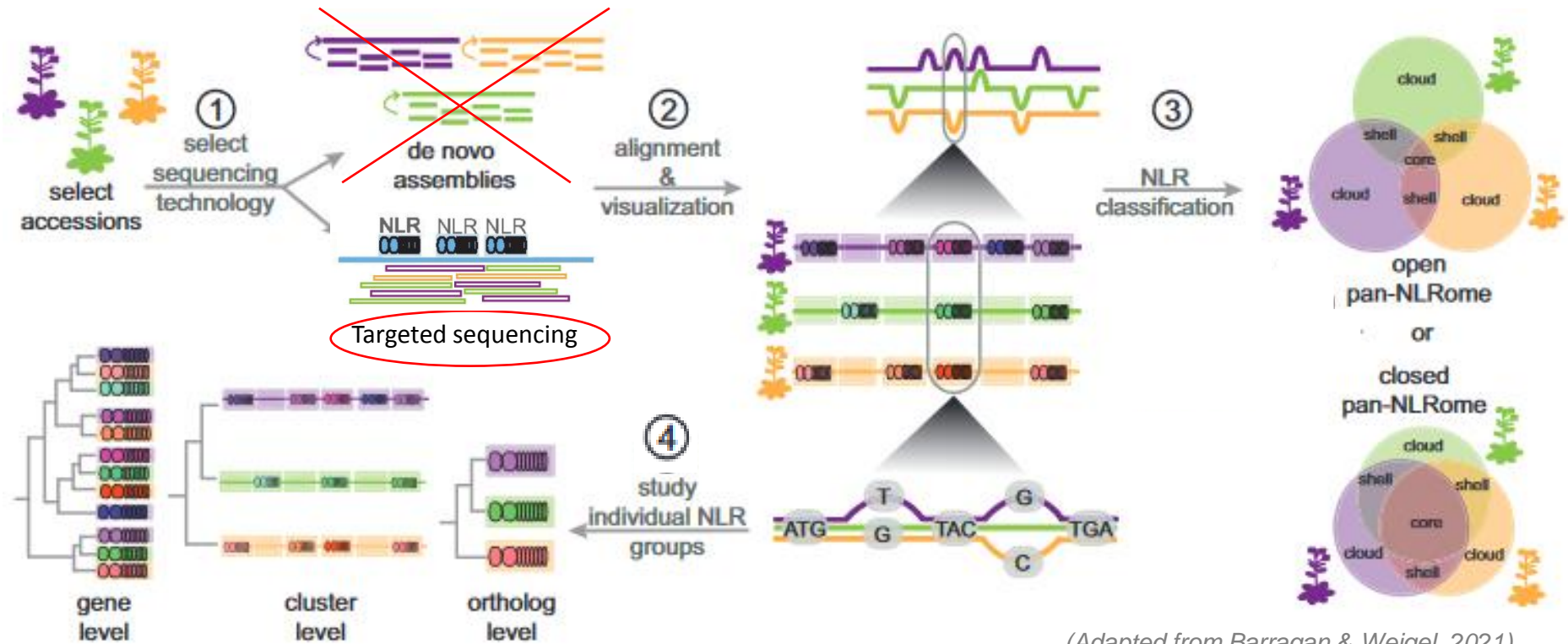
- Accept/reject molecules based on **small initial part** of sequence (~500 bp)
- **Enrich/deplete** specific regions of interest.
- Increase on-target data, reduce time-to-answer.
- **Real time** target selection: **easy** library preparation.



➤ Our objective: Nanopore adaptive sampling to decipher the genetic diversity of the NLRome in melon

Reference genome not enough → Construction of **pan-NLRome**

High number of varieties (~150 varieties) → Need for **selective sequencing**



(Adapted from Barragan & Weigel, 2021)

➤ NLR resistance genes: a conserved structure

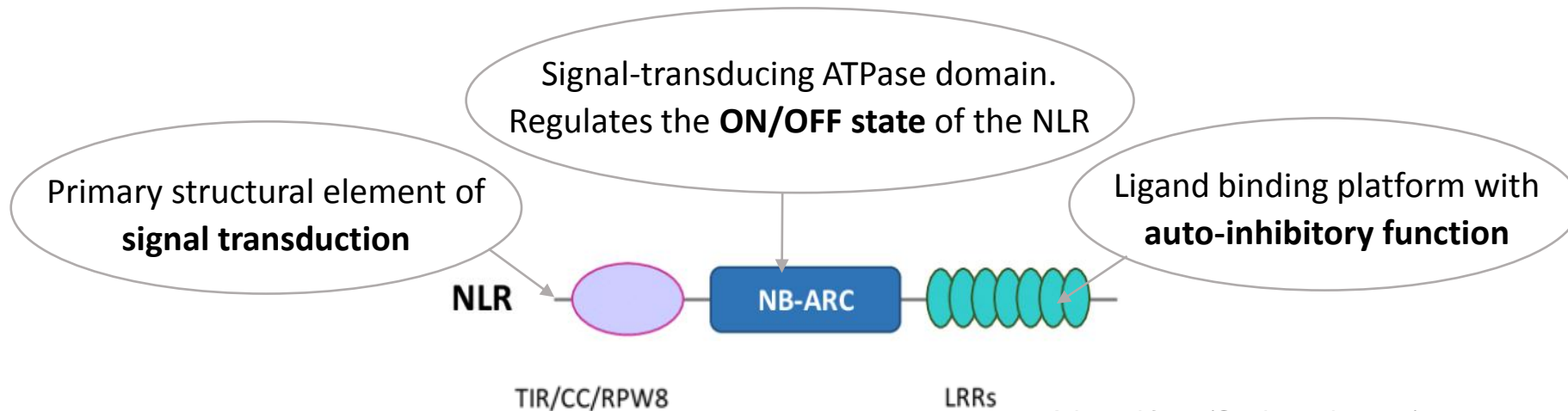
Nucleotide binding site (NB) -leucine rich repeat (LRR)



Intracellular immune receptor proteins

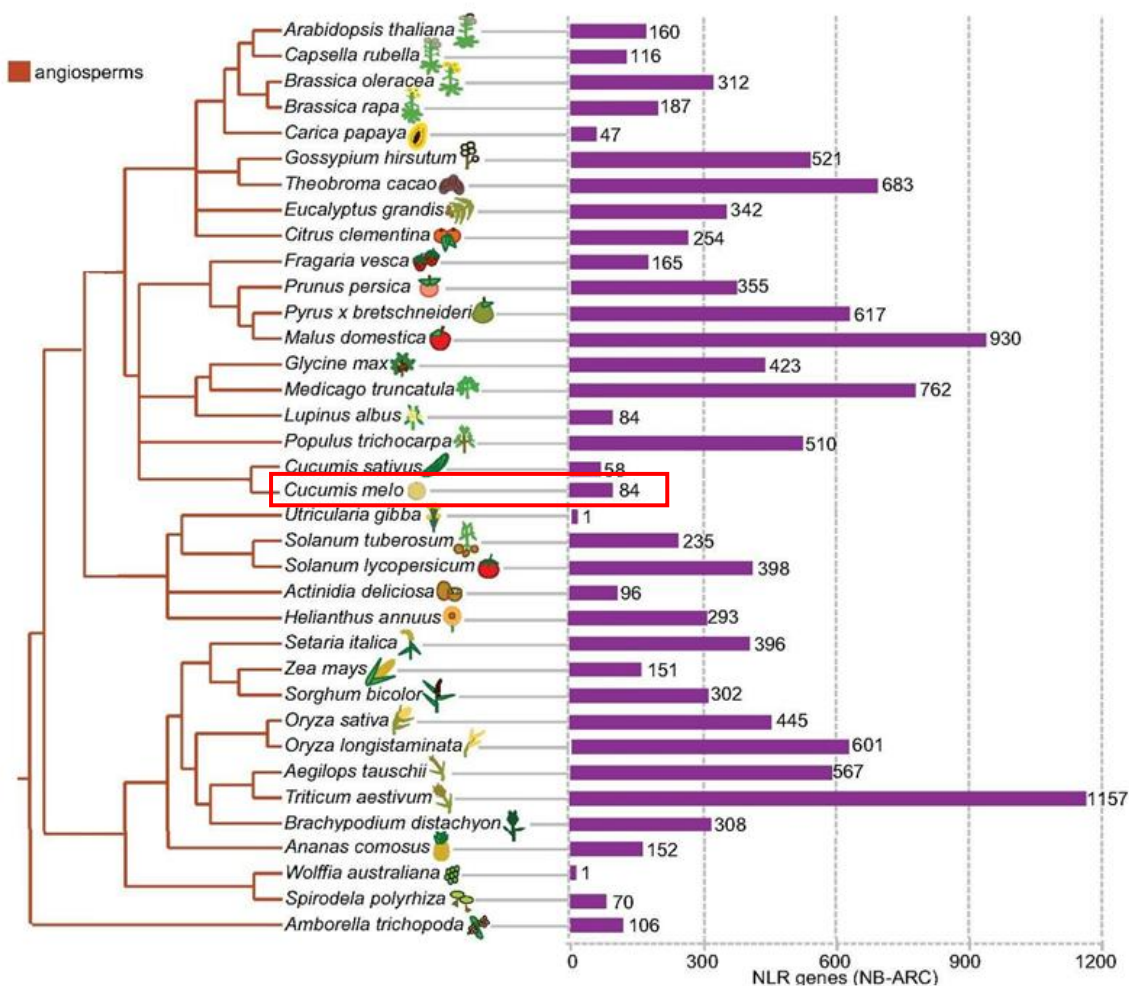
Major family of plant-resistance (R) genes

Broad range of **resistance**



Adapted from (Gottin et al., 2021)

➤ Variable number of NLR genes between plant species



Usually grouped into **clusters**

High level of presence/absence polymorphisms (PAV)

Low frequency in the Cucurbitaceae family



C. melo variety Anso77

84 NLR genes in 15 clusters

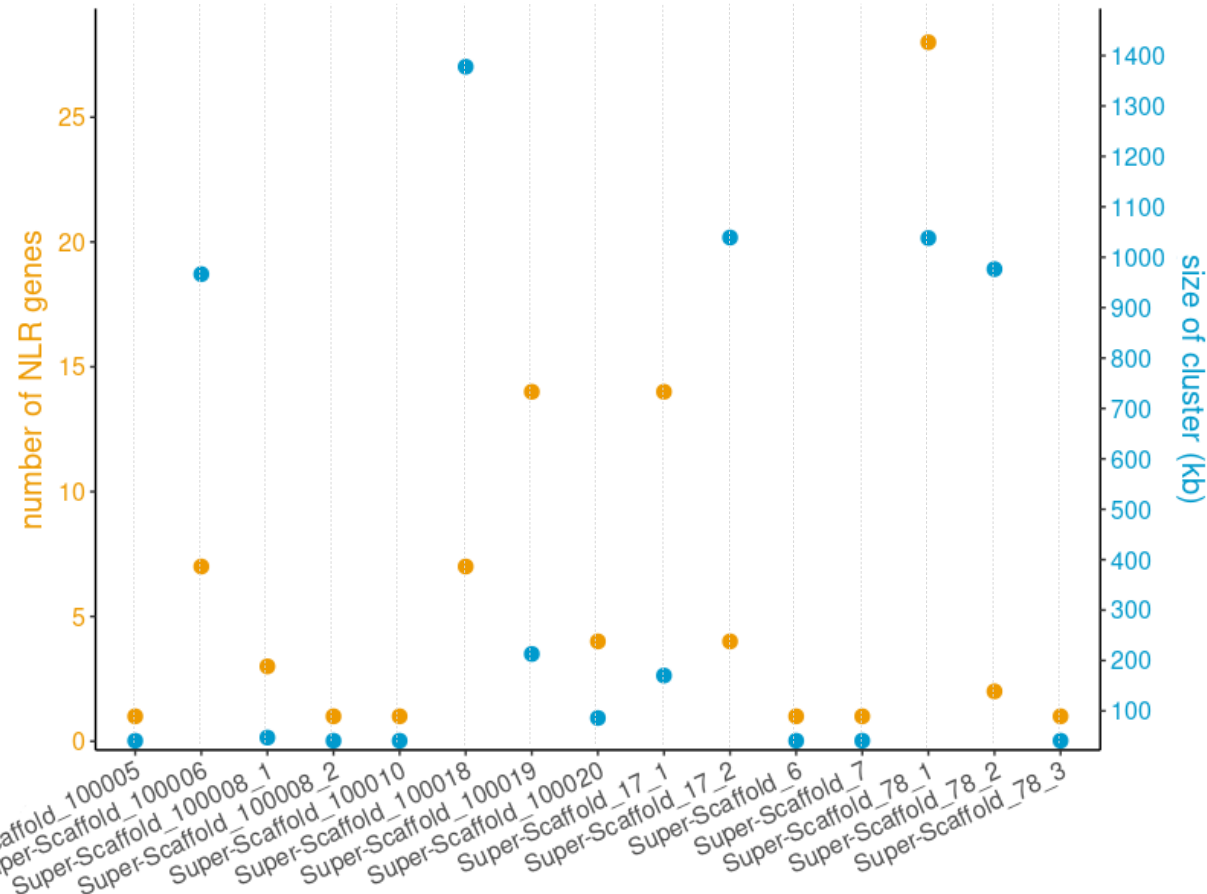
NLRGenomeSweeper (Toda et al., 2020)

Adapted from (Barragan & Weigel, 2021)



➤ Our target regions: 15 NLR-gene clusters

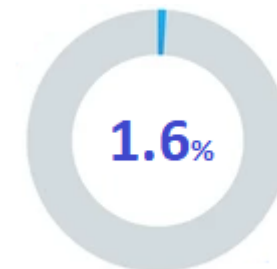
Reference genome → Variety **Anso77** (draft genome produced at INRAE-GAFL/EPGV)



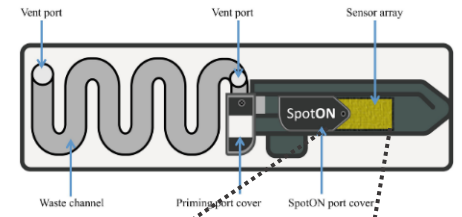
Reference genome (.fasta)
+
Target regions (.bed)

Clusters:
NLR genes + 20kb-extra flanking
Variable in size
Variable in number of genes

Genome length ~380Mb
Target regions length ~6.16Mb



➤ Our first experience: Variety Anso-77 (same as provided reference)



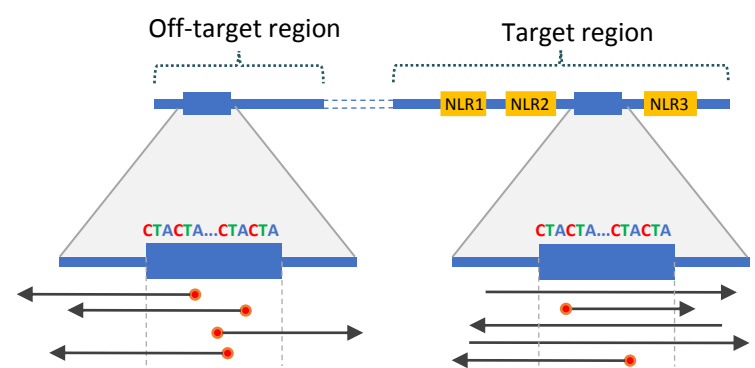
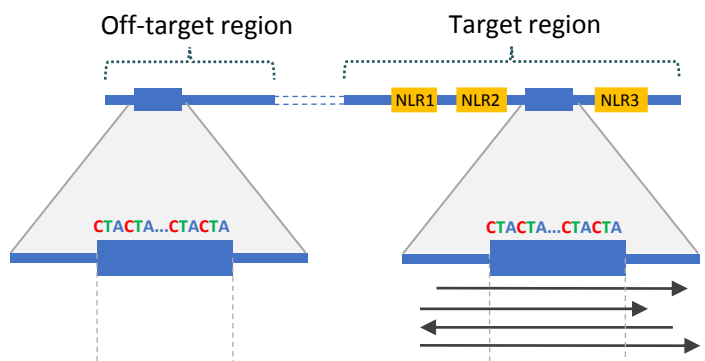
NAS

Standard sequencing



Masking repetitive elements >200kb

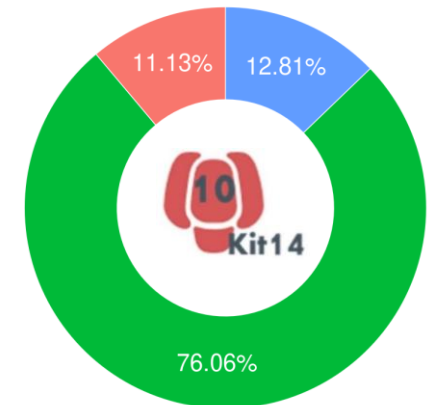
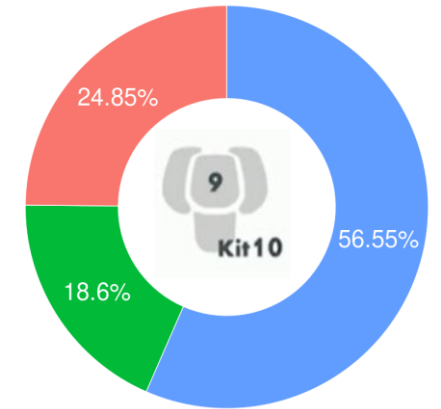
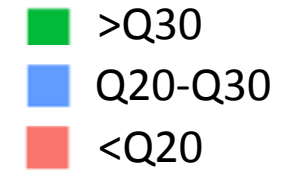
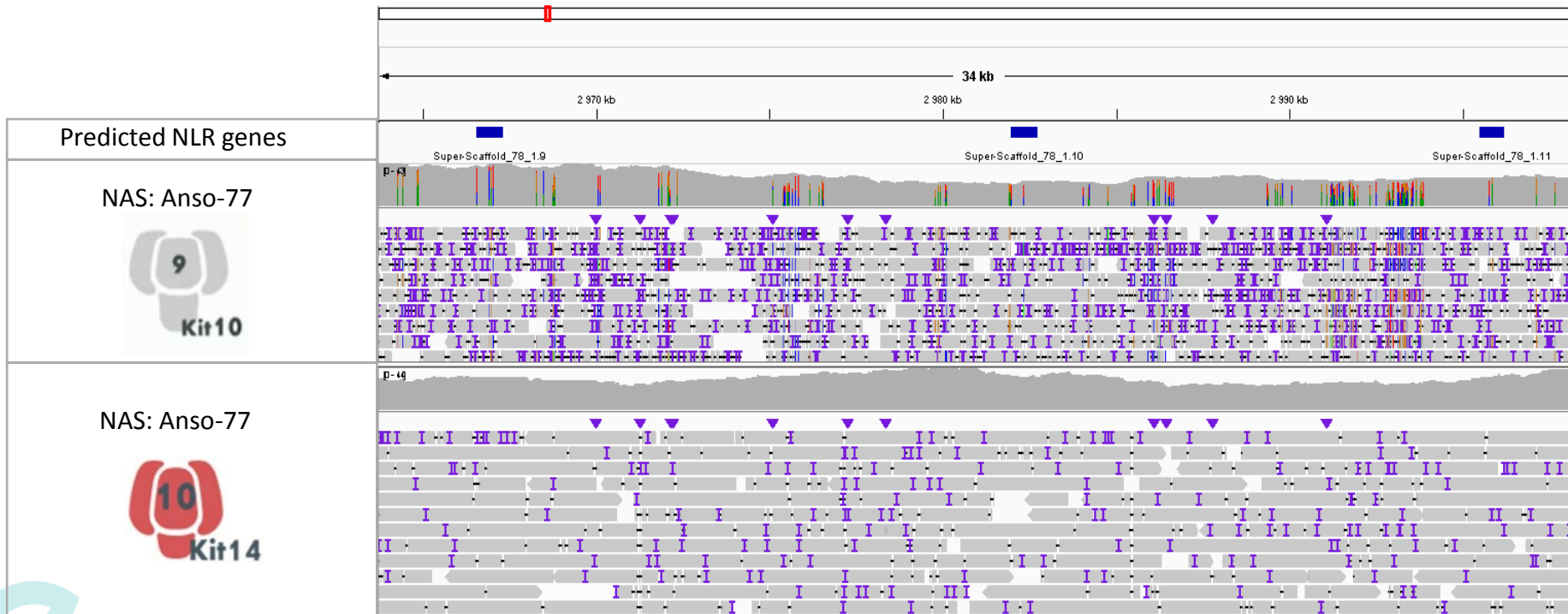
Not masking repetitive elements



➤ Nanopore kit evolution: From kit10 to kit14

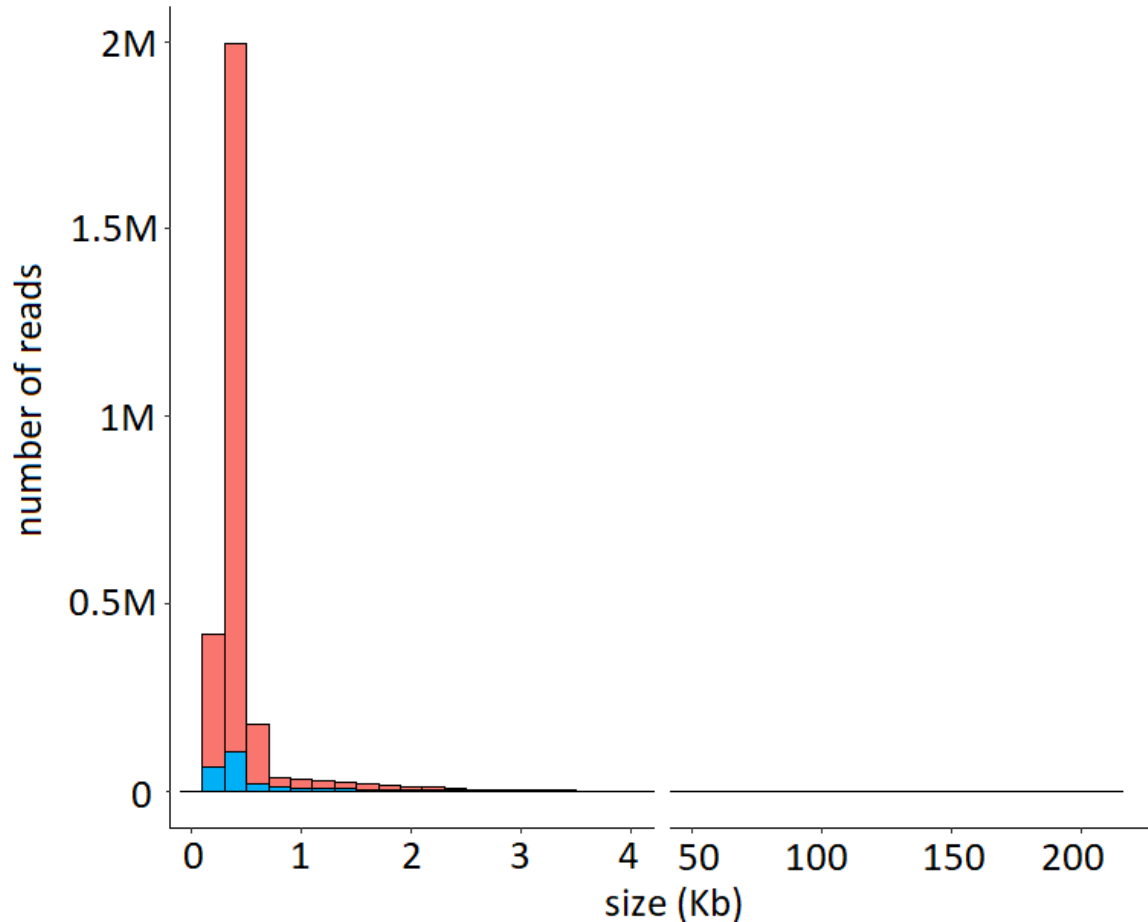


- **Increased accuracy**, improved sequencing **speed**
- **Reactive consumption reduced**, adaptors capture improved
- Duplex sequencing, **better throughput**

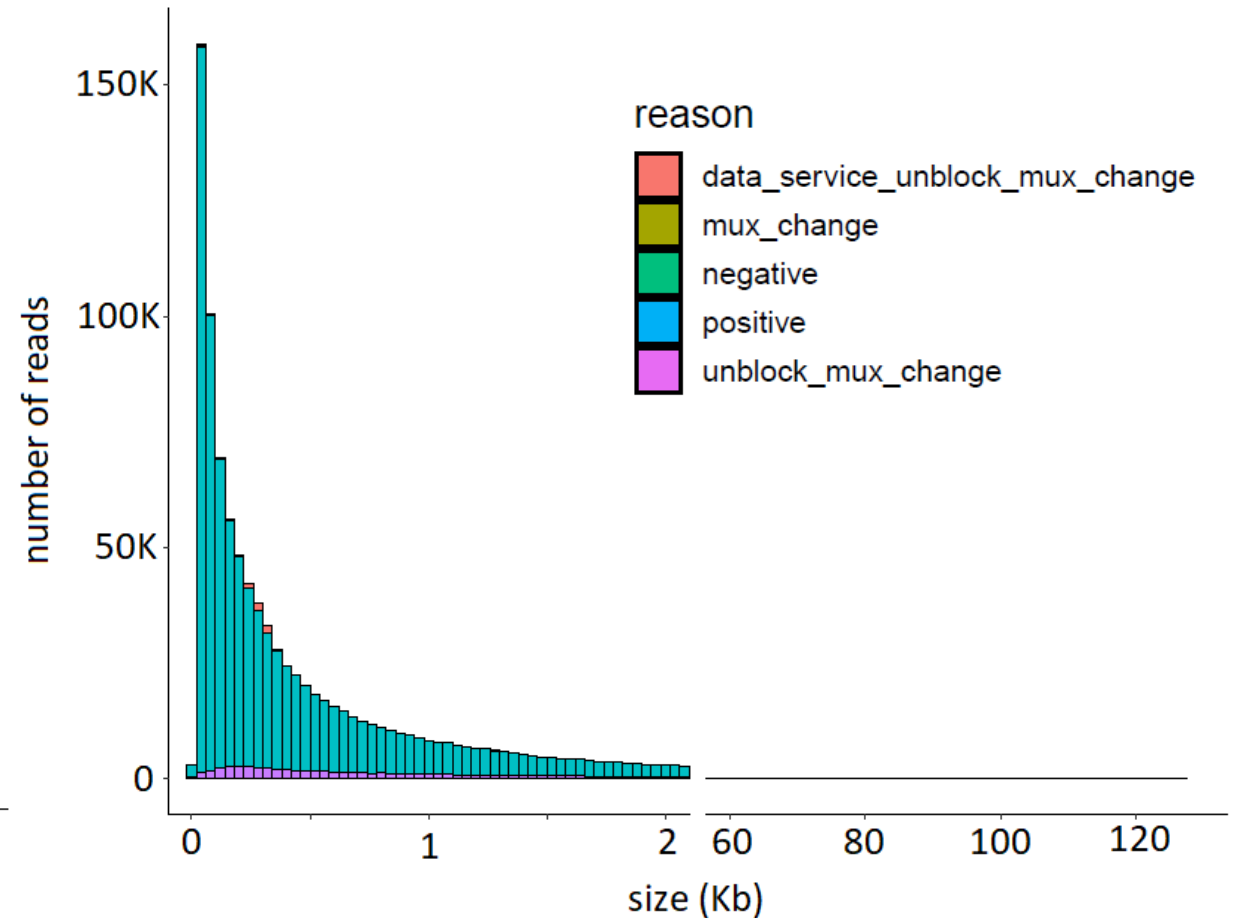


➤ NAS: A characteristic distribution of read lengths

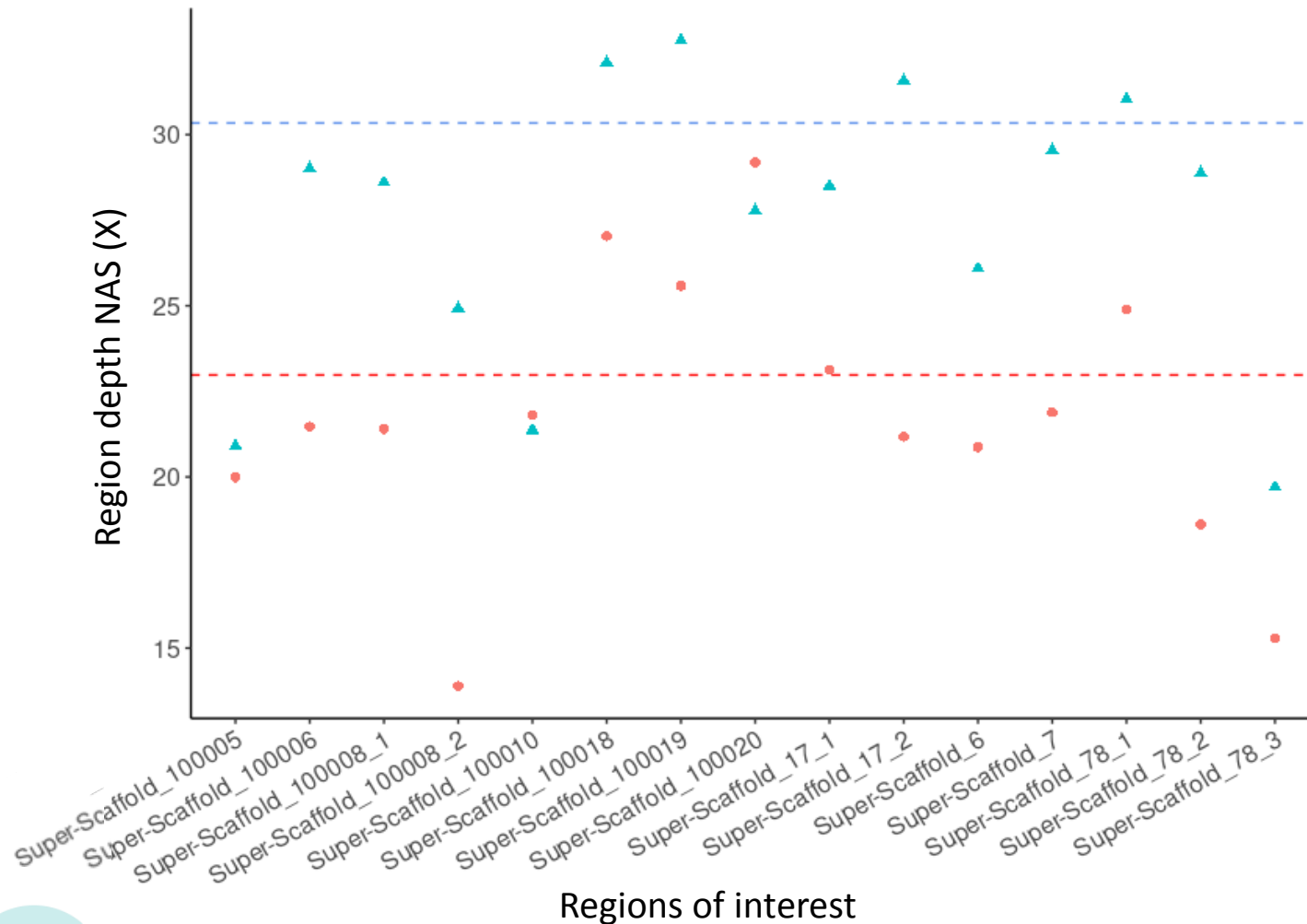
Nanopore adaptive sampling



Standard sequencing



➤ Statistics: regions depth



experiment

● Anso_masking

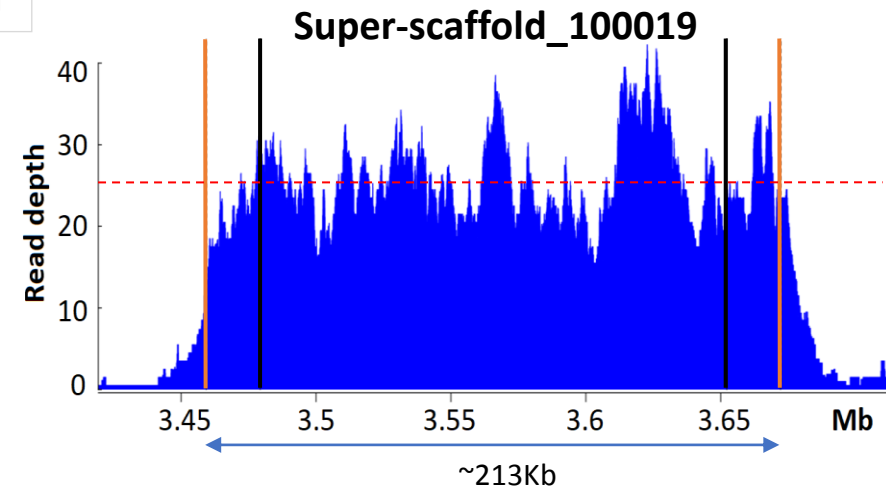
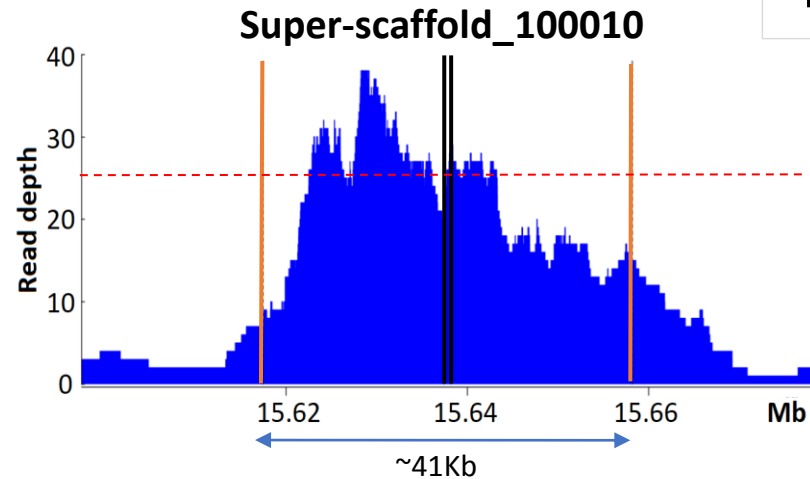
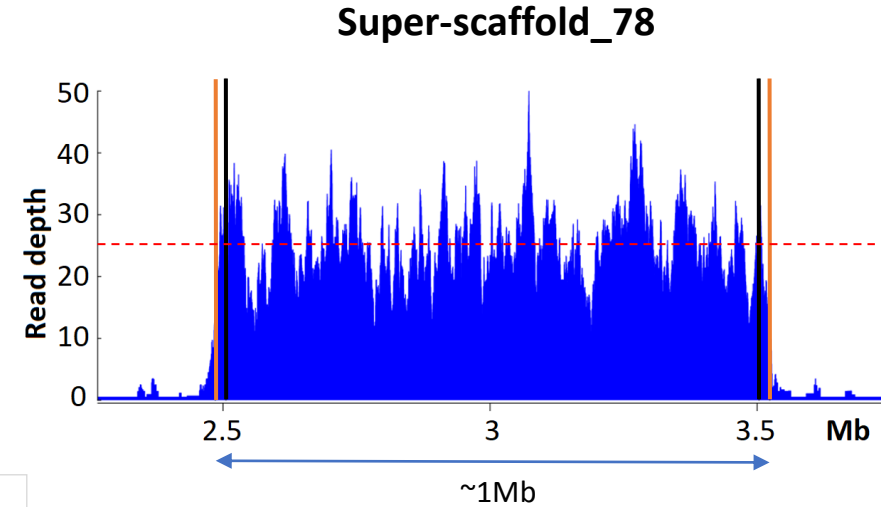
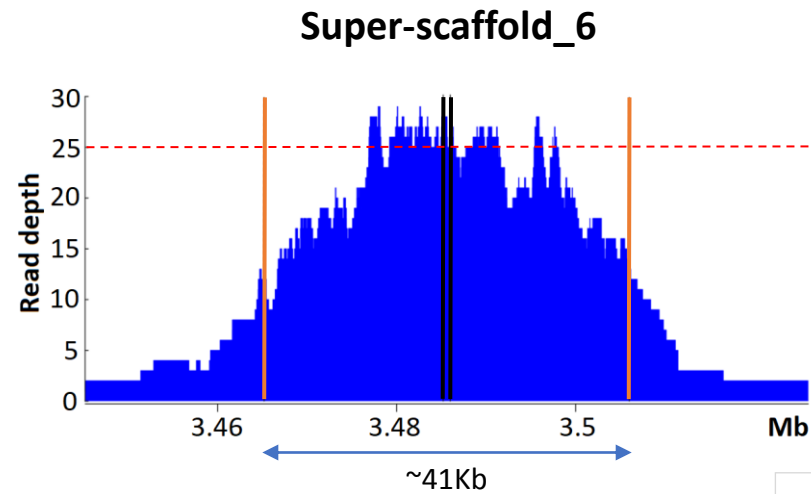
▲ Anso_notmasking

Variable between clusters

Consistent between experiences

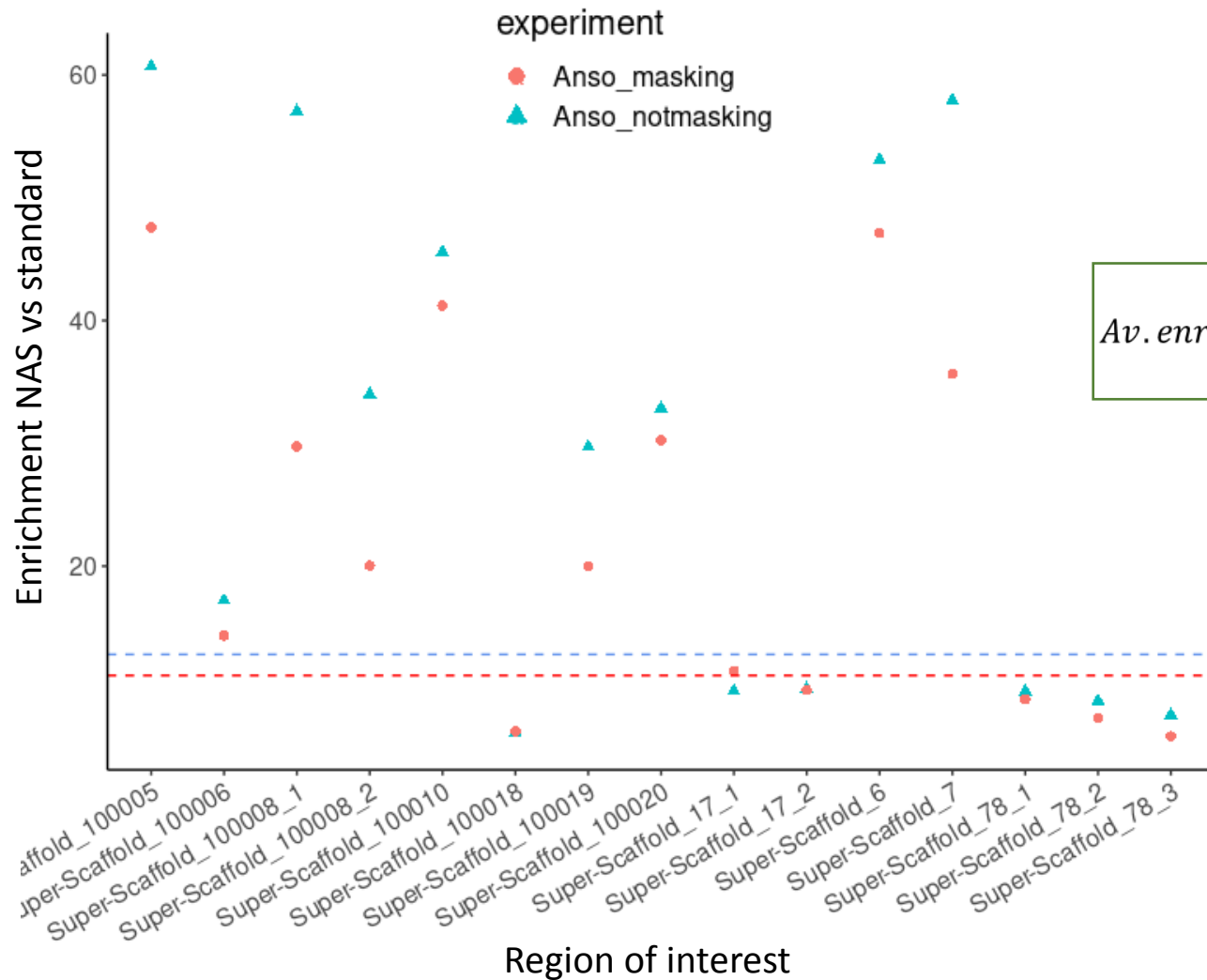
Mostly higher not masking

➤ Visual enrichment of our target regions



— ROI $\pm 20\text{kb}$
— ROI delimiter

➤ Good enrichment of our target regions



$$Enrichment_{region} = \frac{\frac{region_cov_NAS}{chrom_cov_NAS}}{\frac{region_cov_standard}{chrom_cov_standard}}$$

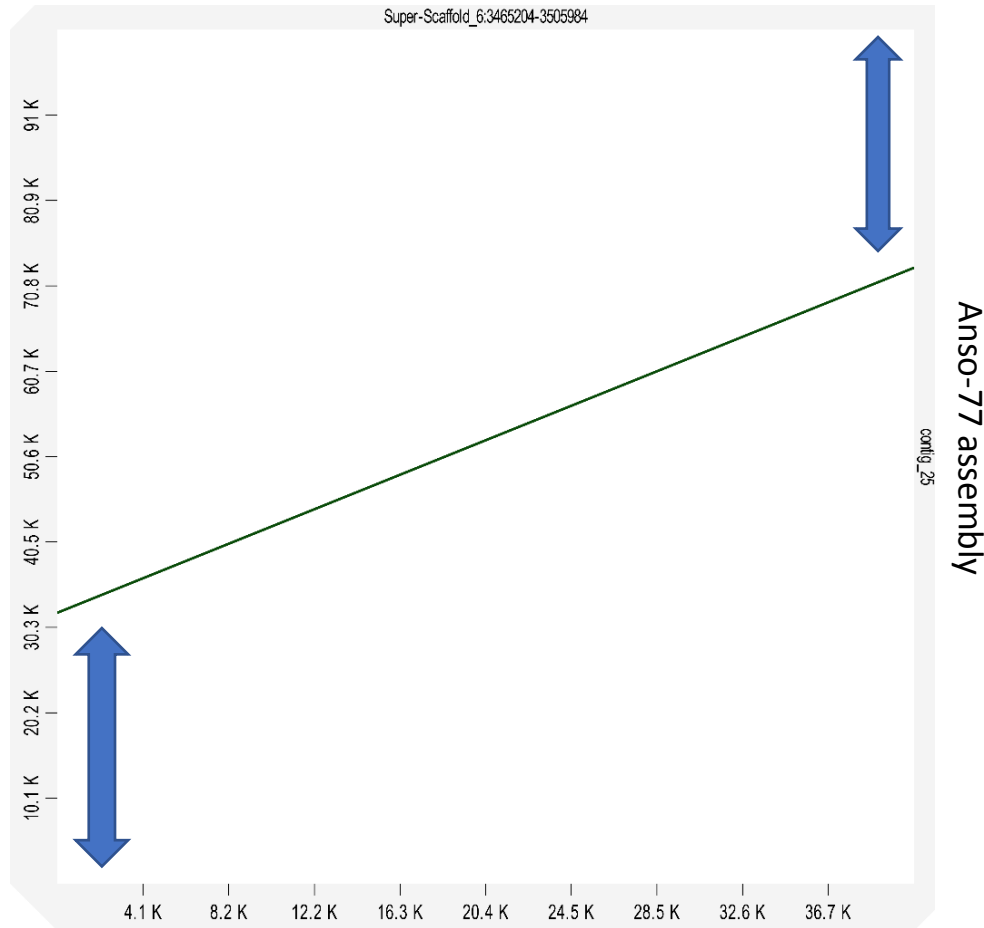
$$Av.enrichment = \sum_{region=1}^N \frac{enrichment_{region}(X) * region_size(bp)}{total_size_regions(bp)}$$

- Variable between clusters
- Variable between experiences
- But consistent between experiences for clusters under 20X
- Average ~equal between experiences

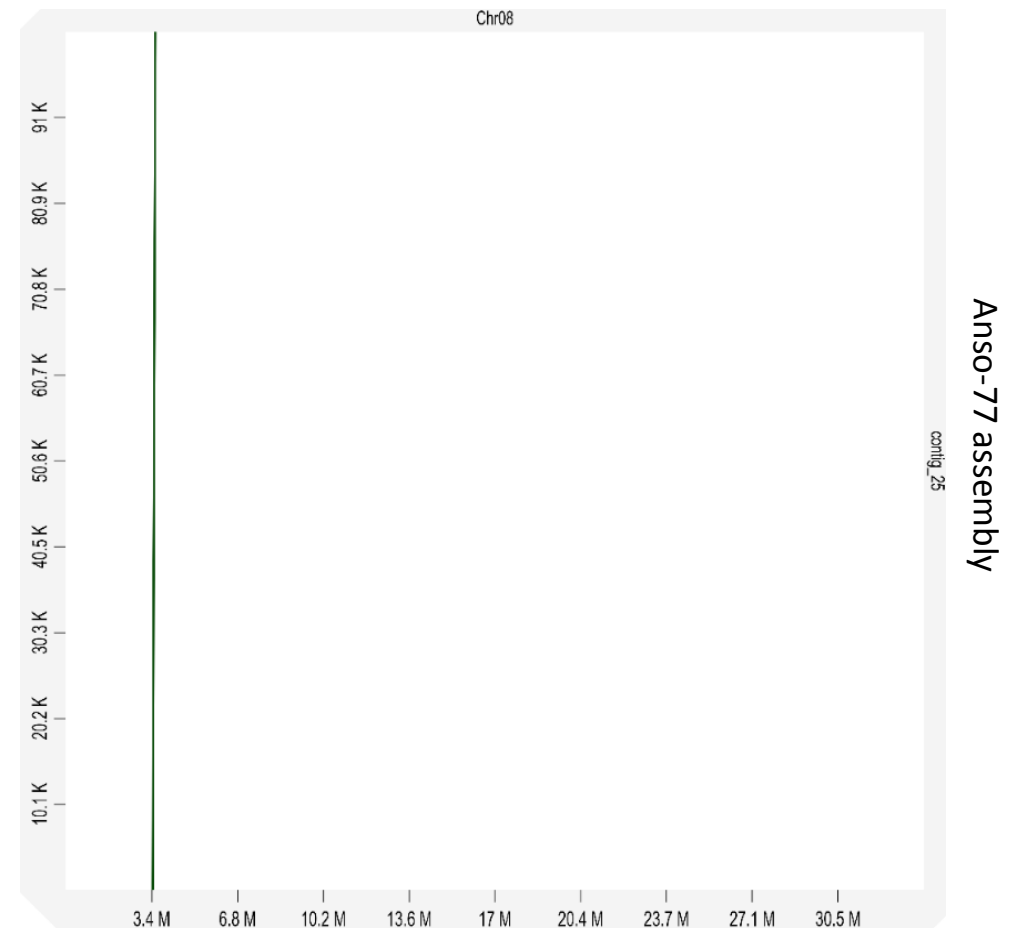


➤ Genome assemblies of target regions: statistics

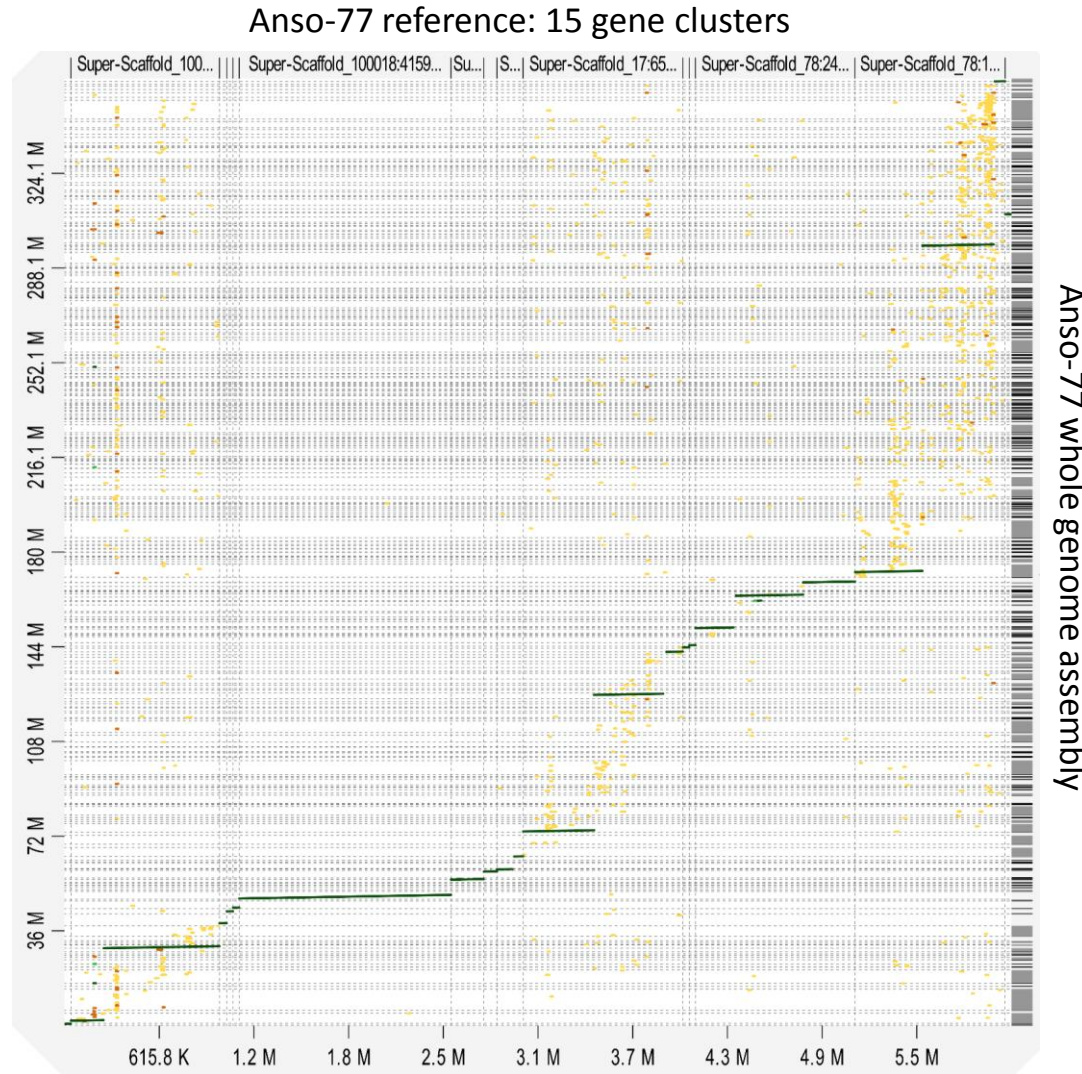
Anso-77 reference: one gene cluster



Anso-77 reference: complete chromosome



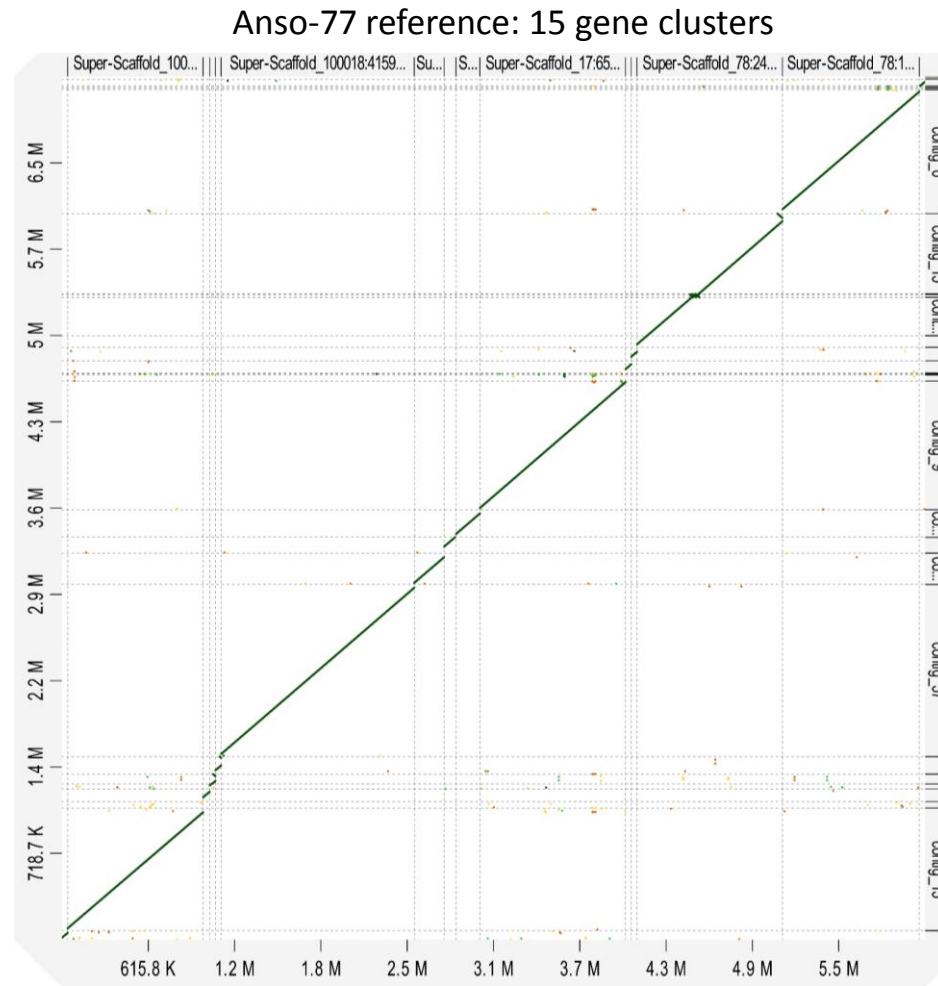
➤ Genome assemblies: Good assembly of target regions



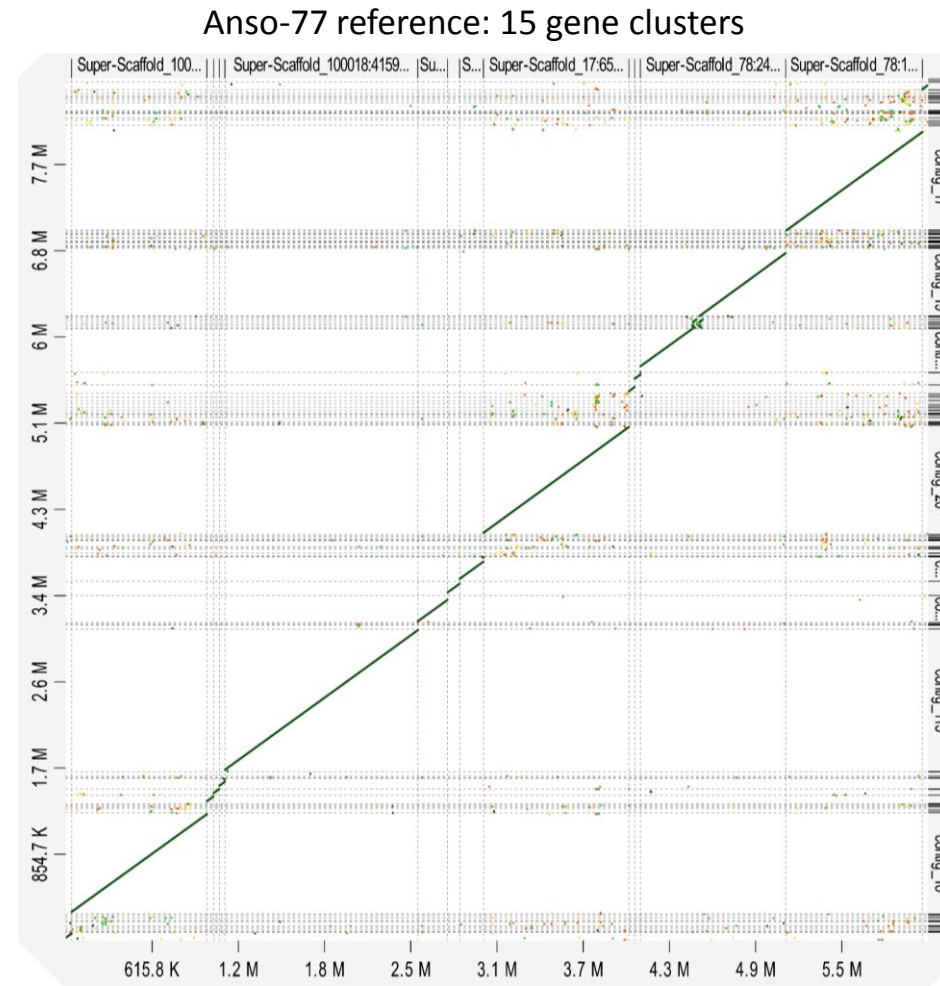
Assembly using WGS data:

- Target regions **fragmented** into multiple contigs
- Target regions **poorly covered** compared to adaptive sampling

➤ Genome assemblies: Good assembly of target regions



Anso-77 assembly **not** masking



Anso-77 assembly masking

Target regions fully assembled with a good depth



➤ Genome assemblies: cluster Vat

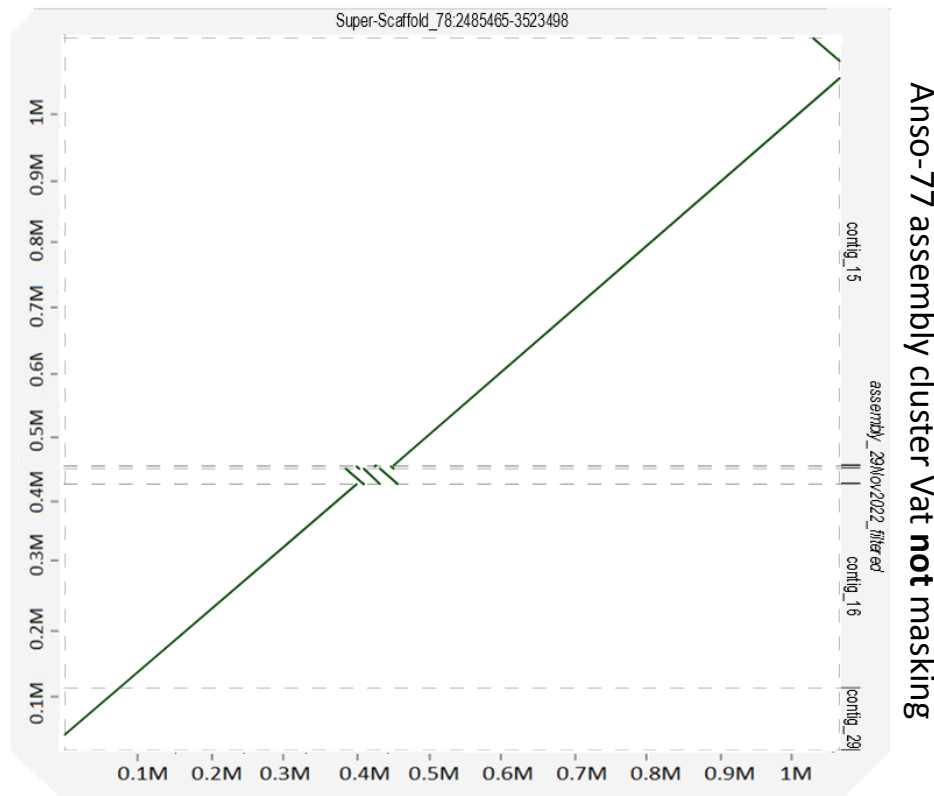
Cluster Vat: Most complex cluster of NLR genes in melon

28 NLR genes

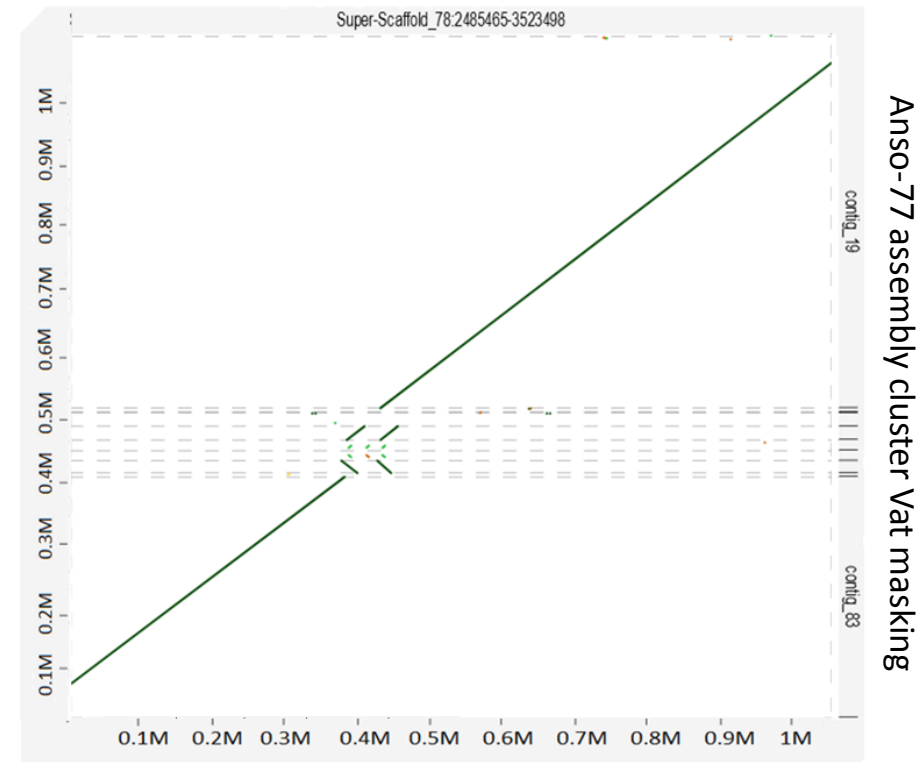
1Mb length

But also the most studied one (INRAE-GAFL)

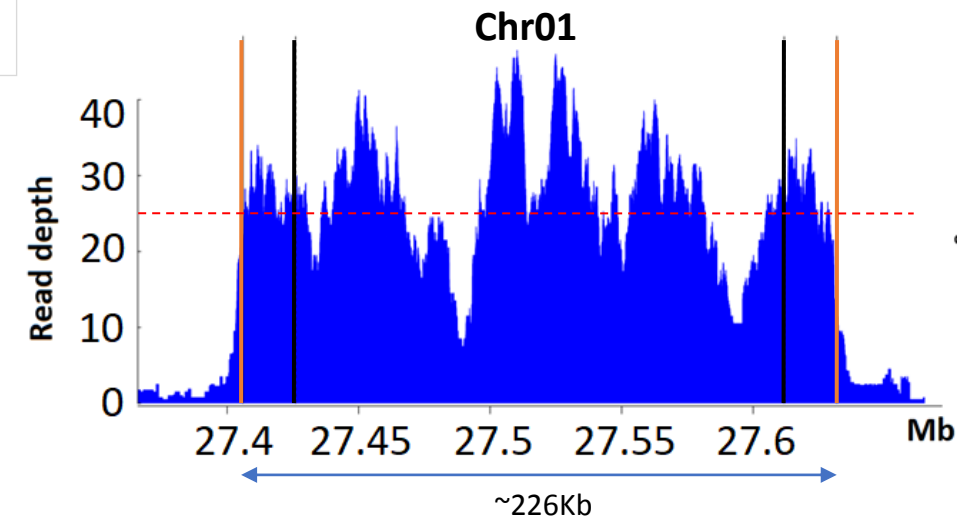
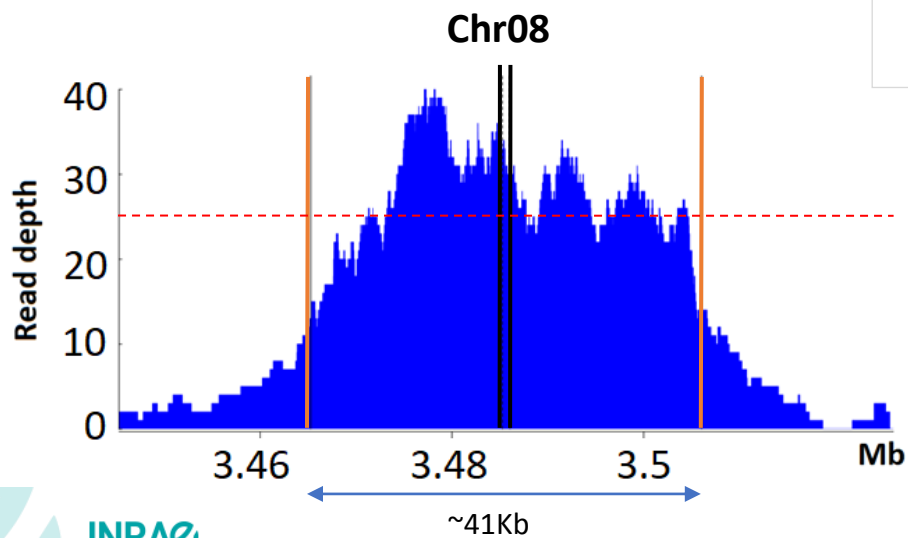
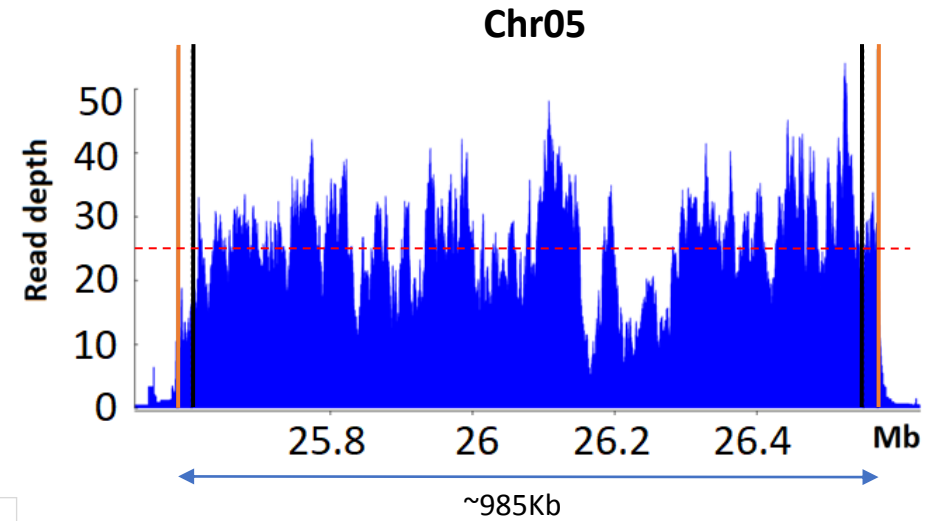
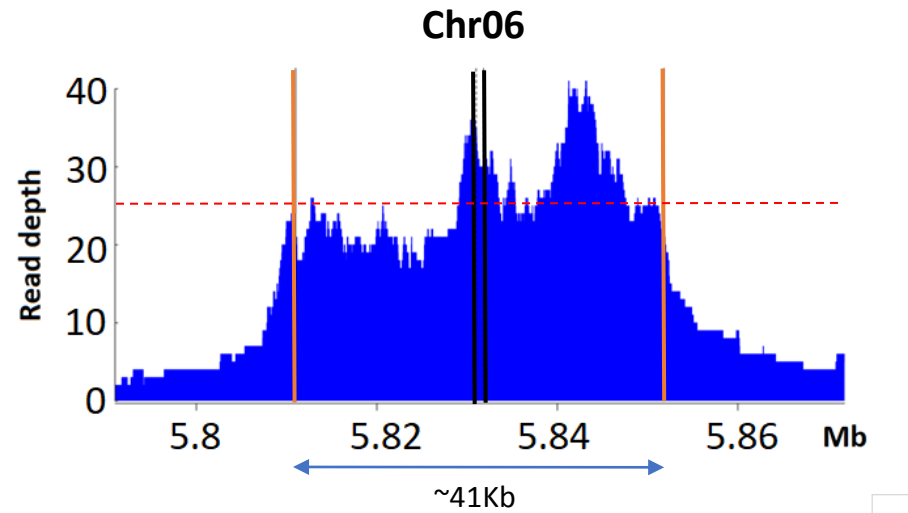
Anso-77 reference: cluster Vat



Anso-77 reference: cluster Vat



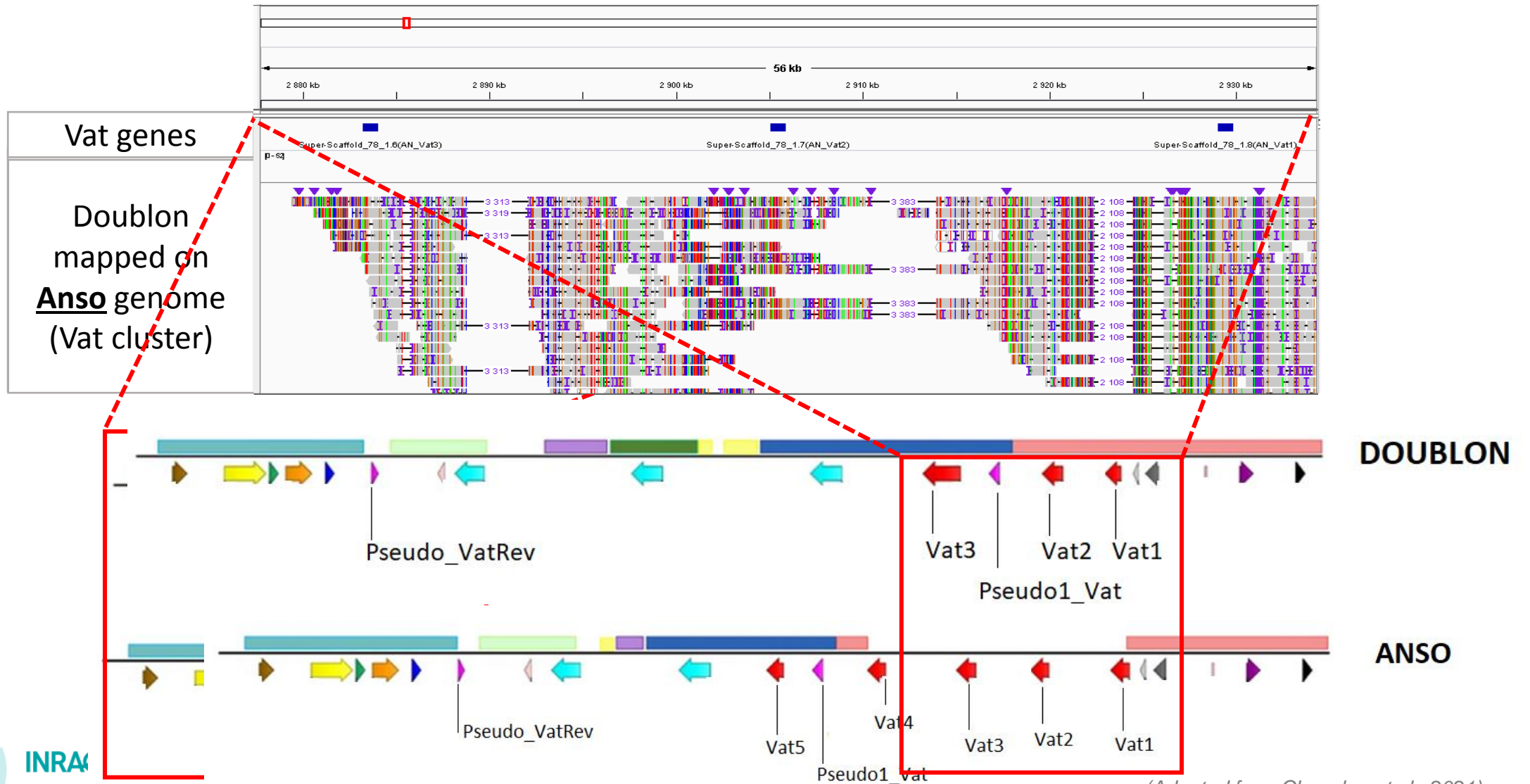
➤ Preliminary results using a different variety: Doublon



— ROI ±20kb
— ROI delimiter



➤ Preliminary results using a different variety: Doublon



> Perspectives

Short-term perspectives:

1. Run on PromethION using a variety **genetically distant** from the provided reference: 'Canton'
2. **Multiplexing** on PromethION using **two barcodes**: Varieties 'Anso' + 'Doublon'

Middle-term perspectives:

1. **Increase the number of barcodes** on PromethION: Selective sequencing of 150 varieties.
2. Evaluate the ability to detect **structural variants** and **copy number variations** between varieties.

Long-term perspectives:

1. Perform a similar experience using a **diploid heterozygote** species with a **higher number of NLR genes** and **more complex clusters**: *Vitis vinifera*.



> In conclusion

What Nanopore adaptive sampling offers?

- Nanopore adaptive sampling is a **simple, reliable, efficient** and **cost-saving** approach.
 - ✓ Standard DNA extraction (no need for HMW DNA)
 - ✓ Standard library preparation
 - ✓ No need of probes design/synthesis
 - ✓ No need of short-read polishing with Kit14
 - ✓ Real-time sequencing
 - ✓ Reduced off-target volume of data compared to WGS

What can we do?

1. Adaptive sampling allows to efficiently retrieve (**mapping** and **assembly**) our **15 ROI** in melon.
2. It will allow to **explore the genetic diversity** of melon **NLR genes** using a **large amount of varieties**.

Acknowledgements



INRAE-EPGV

Patricia Faivre-Rampant
Damien Hinsinger
Aurelie Berard
Aurelie Canaguier
Isabelle Le-Clainche

INRAE-GAFL

Nathalie Boissot
Veronique Chovelon
Jacques Lagnel
Vincent Rittener-Ruff

Genoscope

Stefan Engelen
Corinne Cruaud

Oxford Nanopore Technologies

François Berdou
Helen Neal
Barbara Ottolini

Disclaimer:

Oxford Nanopore Technologies products are not intended for use for health assessment or to diagnose, treat, mitigate, cure, or prevent any disease or condition.